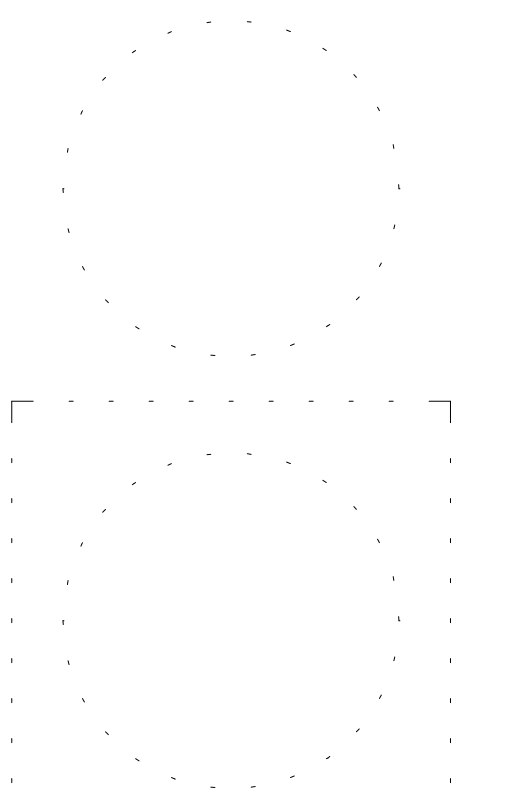




HAMPTON COUNTY HIGH SCHOOL - PHASE 1



205 1/2 KING STREET  
CHARLESTON, SOUTH CAROLINA 29401  
TEL. 843.577.4444 FAX 843.722.4789  
WWW.LS3P.COM



MEMBERS OF THE AMERICAN INSTITUTE OF ARCHITECTS

COPYRIGHT 2023 ALL RIGHTS RESERVED  
PRINTED OR ELECTRONIC DRAWINGS AND DOCUMENTATION MAY NOT BE REPRODUCED  
IN ANY FORM WITHOUT WRITTEN PERMISSION FROM LS3P ASSOCIATES LTD.

REVISIONS:

No.	Description	Date

LS3P PROJECT: 1201-217190  
DATE: NOVEMBER 3, 2023

SECOND FLOOR FURNITURE PLAN - BLDG A2

A-814

FURNITURE LEGEND - OFFICES

TYPE A - PRINCIPAL OFFICE

- 1 OPEN DESK COUNTERTOP WITH MODESTY PANEL
- 1 OPEN SHELVING/WORKSURFACE
- 1 LATERAL FILE CABINET/WORKSURFACE
- 1 WARDROBE TOWER
- 1 TALL BOOKCASE
- 2 GUEST CHAIRS
- 1 TASK CHAIR

TYPE B - ASSISTANT PRINCIPAL OFFICE

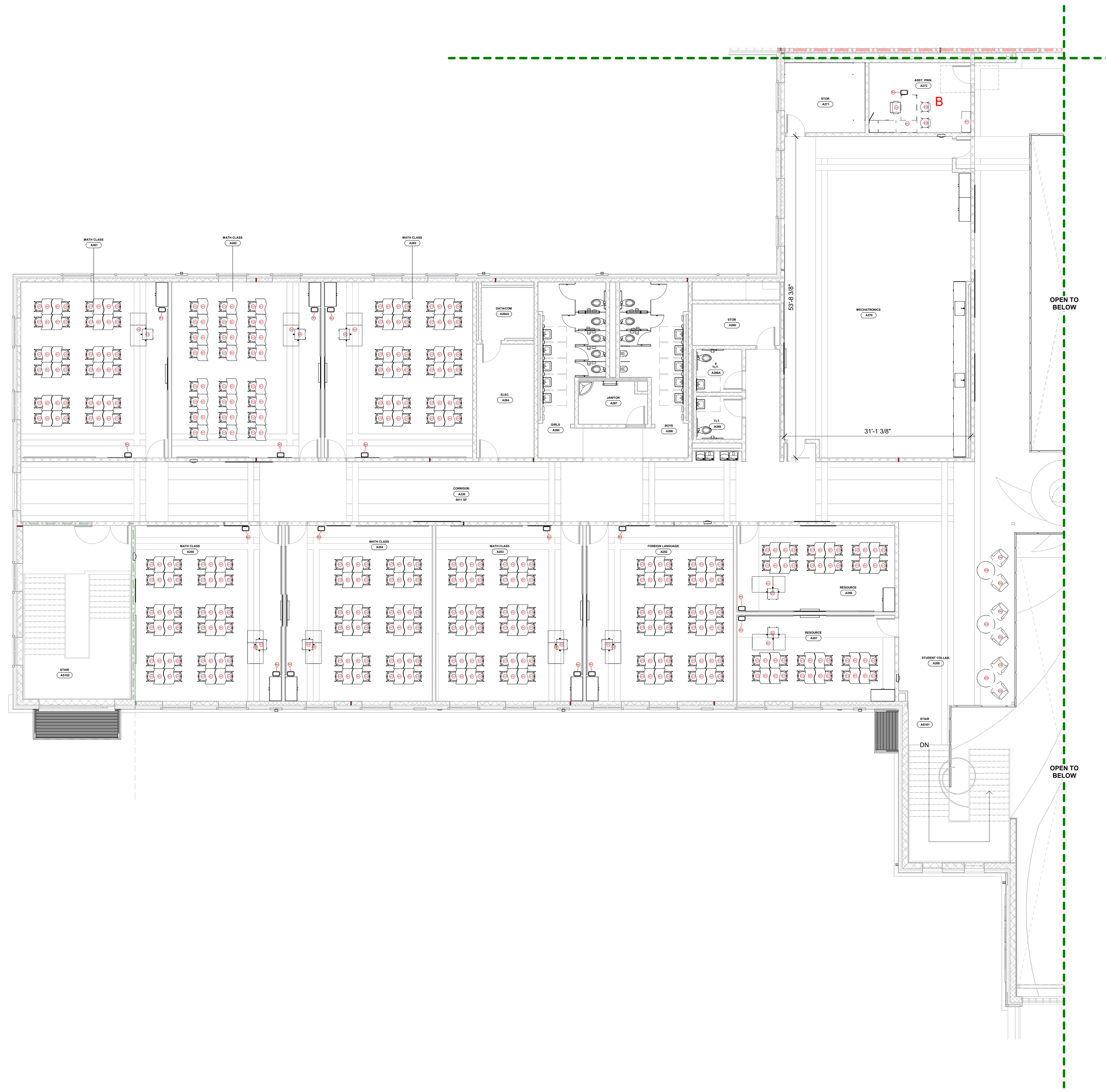
- 1 OPEN DESK WORKSURFACE WITH MODESTY PANEL
- 1 OPEN SHELVING/WORKSURFACE
- 1 LATERAL FILE CABINET/WORKSURFACE
- 1 WARDROBE TOWER
- 1 TALL BOOKCASE
- 2 GUEST CHAIRS
- 1 TASK CHAIR

TYPE C - STANDARD OFFICE

- 1 OPEN DESK WORKSURFACE WITH MODESTY PANEL
- 1 LATERAL FILE CABINET/WORKSURFACE
- 1 TALL BOOKCASE AT SOME LOCATIONS, REFERENCE PLANS
- 2 GUEST CHAIRS AT SOME LOCATIONS, REFERENCE PLANS
- 1 TASK CHAIR

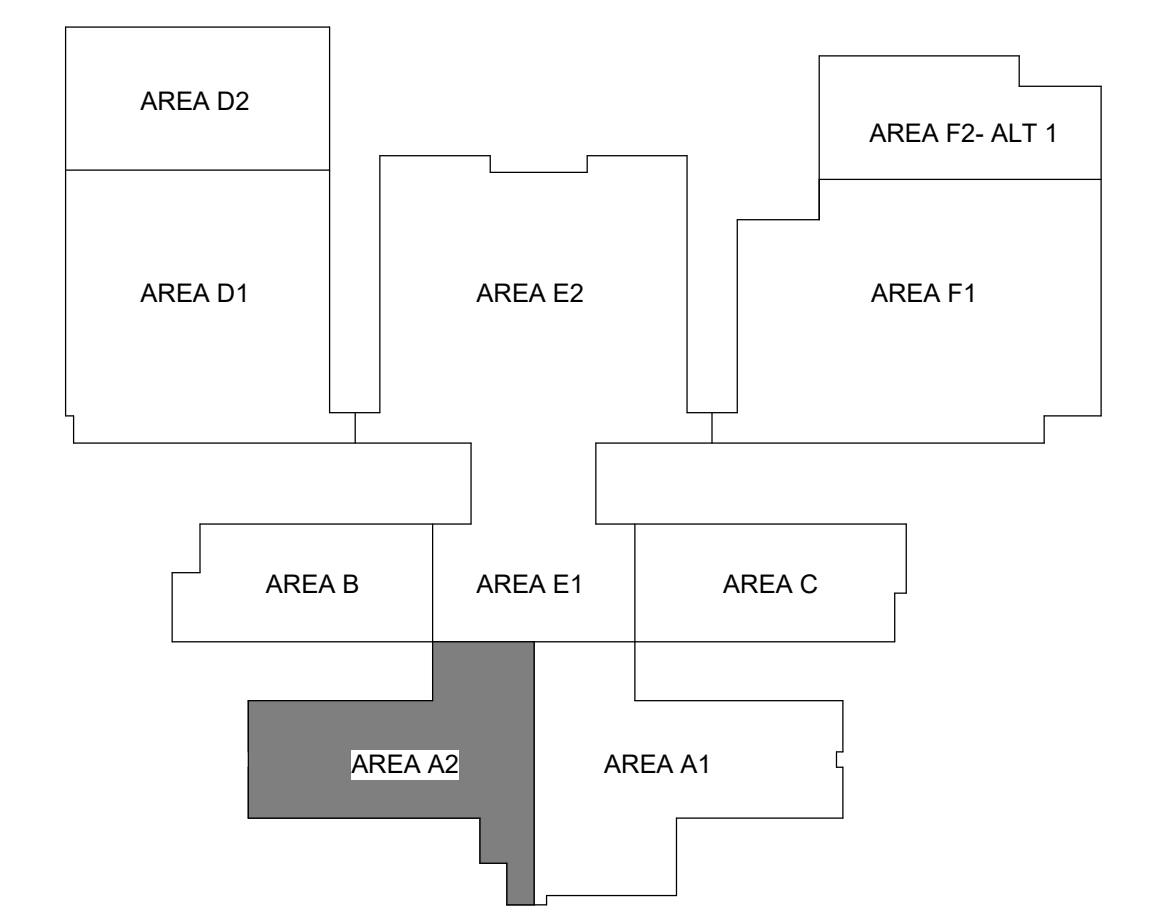
TYPE D - STANDARD OFFICE

- 1 OPEN DESK WORKSURFACE WITH MODESTY PANEL
- 1 MOBILE PEDESTAL
- 1 TASK CHAIR



A1 SECOND FLOOR FURNITURE PLAN - BLDG A2  
1/8" = 1'-0"

KEY PLAN



Autodesk Docs://1201-217190 Hampton County HS/ARCH/ Hampton County HS\_v2022.rvt  
3/3/2025 5:36:00 PM