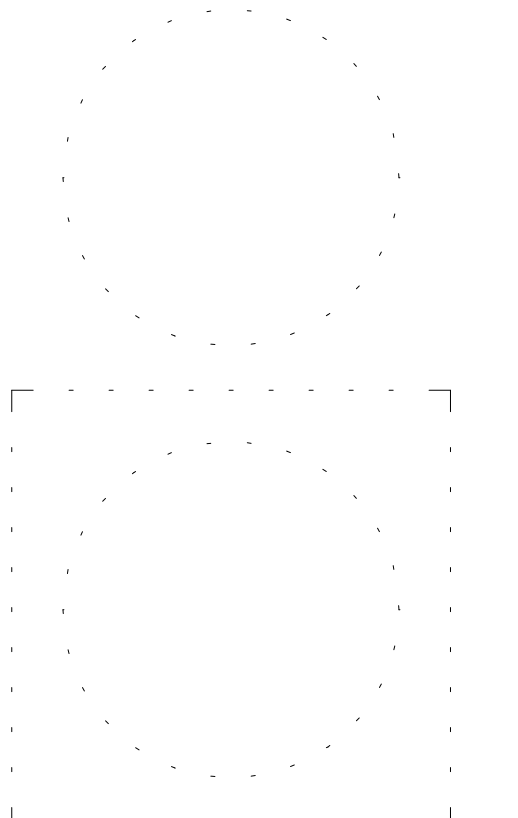




HAMPTON COUNTY HIGH SCHOOL - PHASE 1



205 1/2 KING STREET  
CHARLESTON, SOUTH CAROLINA 29401  
TEL. 843.577.4444 FAX 843.722.4789  
WWW.LS3P.COM



MEMBERS OF THE AMERICAN INSTITUTE OF ARCHITECTS

COPYRIGHT 2023 ALL RIGHTS RESERVED  
PRINTED OR ELECTRONIC DRAWINGS AND DOCUMENTATION MAY NOT BE REPRODUCED IN ANY FORM WITHOUT WRITTEN PERMISSION FROM LS3P ASSOCIATES LTD.

REVISIONS:

| No. | Description | Date |
|-----|-------------|------|
|-----|-------------|------|

LS3P PROJECT: 1201-217190  
DATE: NOVEMBER 3, 2023

FIRST FLOOR FURNITURE PLAN - BLDG C

A-808

### FURNITURE LEGEND - OFFICES

#### TYPE A - PRINCIPAL OFFICE

- 1 OPEN DESK COUNTERTOP WITH MODESTY PANEL
- 1 OPEN SHELVING/WORKSURFACE
- 1 LATERAL FILE CABINET/WORKSURFACE
- 1 WARDROBE TOWER
- 1 TALL BOOKCASE
- 2 GUEST CHAIRS
- 1 TASK CHAIR

#### TYPE B - ASSISTANT PRINCIPAL OFFICE

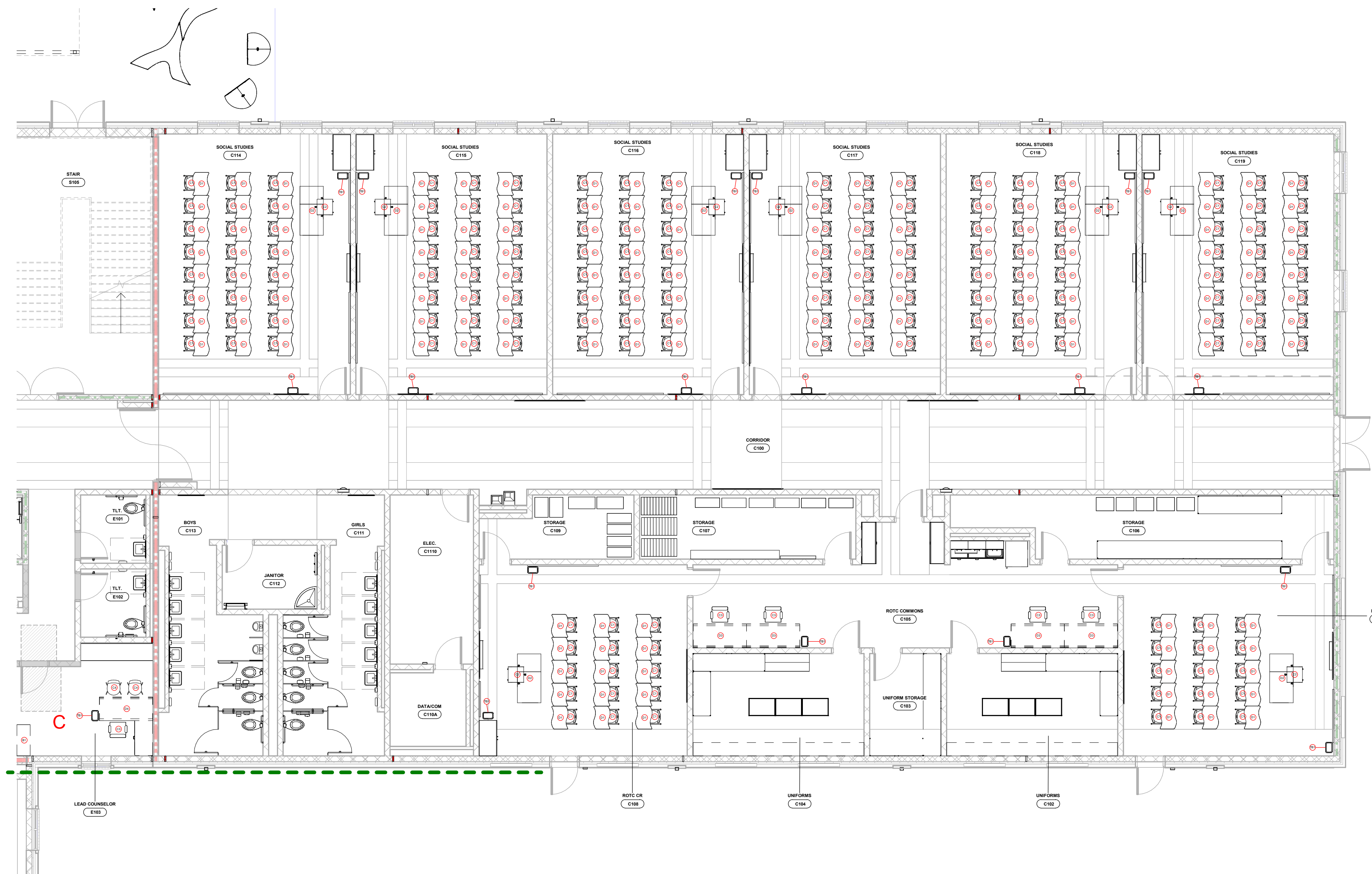
- 1 OPEN DESK WORKSURFACE WITH MODESTY PANEL
- 1 OPEN SHELVING/WORKSURFACE
- 1 LATERAL FILE CABINET/WORKSURFACE
- 1 WARDROBE TOWER
- 1 TALL BOOKCASE
- 2 GUEST CHAIRS
- 1 TASK CHAIR

#### TYPE C - STANDARD OFFICE

- 1 OPEN DESK WORKSURFACE WITH MODESTY PANEL
- 1 LATERAL FILE CABINET/WORKSURFACE
- 1 TALL BOOKCASE AT SOME LOCATIONS, REFERENCE PLANS
- 2 GUEST CHAIRS AT SOME LOCATIONS, REFERENCE PLANS
- 1 TASK CHAIR

#### TYPE D - STANDARD OFFICE

- 1 OPEN DESK WORKSURFACE WITH MODESTY PANEL
- 1 MOBILE PEDESTAL
- 1 TASK CHAIR



A1 FIRST FLOOR FURNITURE PLAN - BLDG C  
1/8" = 1'-0"

### KEY PLAN

