



HAMPTON COUNTY HIGH SCHOOL - PHASE 1



205 1/2 KING STREET
CHARLESTON, SOUTH CAROLINA 29401
TEL. 843.577.4444 FAX 843.722.4789
WWW.LS3P.COM

MEMBERS OF THE AMERICAN INSTITUTE OF ARCHITECTS

COPYRIGHT 2023 ALL RIGHTS RESERVED
PRINTED OR ELECTRONIC DRAWINGS AND DOCUMENTATION MAY NOT BE REPRODUCED IN ANY FORM WITHOUT WRITTEN PERMISSION FROM LS3P ASSOCIATES LTD.

REVISIONS:

No.	Description	Date

LS3P PROJECT: 1201-217190
DATE: NOVEMBER 3, 2023

FIRST FLOOR FURNITURE PLAN - BLDG A2

A-806

FURNITURE LEGEND - OFFICES

TYPE A - PRINCIPAL OFFICE

- 1 OPEN DESK COUNTERTOP WITH MODESTY PANEL
- 1 OPEN SHELVING/WORKSURFACE
- 1 LATERAL FILE CABINET/WORKSURFACE
- 1 WARDROBE TOWER
- 1 TALL BOOKCASE
- 2 GUEST CHAIRS
- 1 TASK CHAIR

TYPE B - ASSISTANT PRINCIPAL OFFICE

- 1 OPEN DESK WORKSURFACE WITH MODESTY PANEL
- 1 OPEN SHELVING/WORKSURFACE
- 1 LATERAL FILE CABINET/WORKSURFACE
- 1 WARDROBE TOWER
- 1 TALL BOOKCASE
- 2 GUEST CHAIRS
- 1 TASK CHAIR

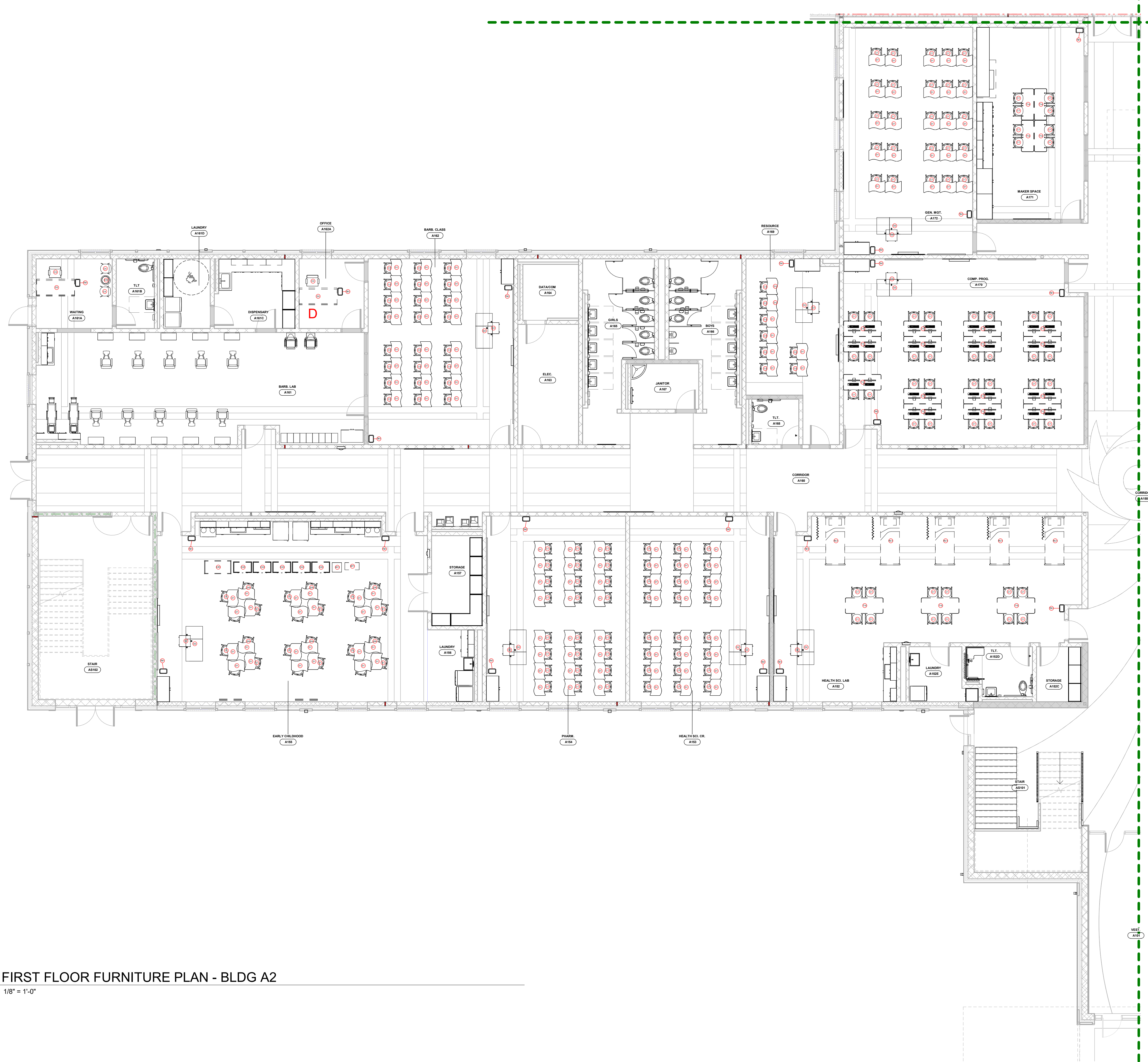
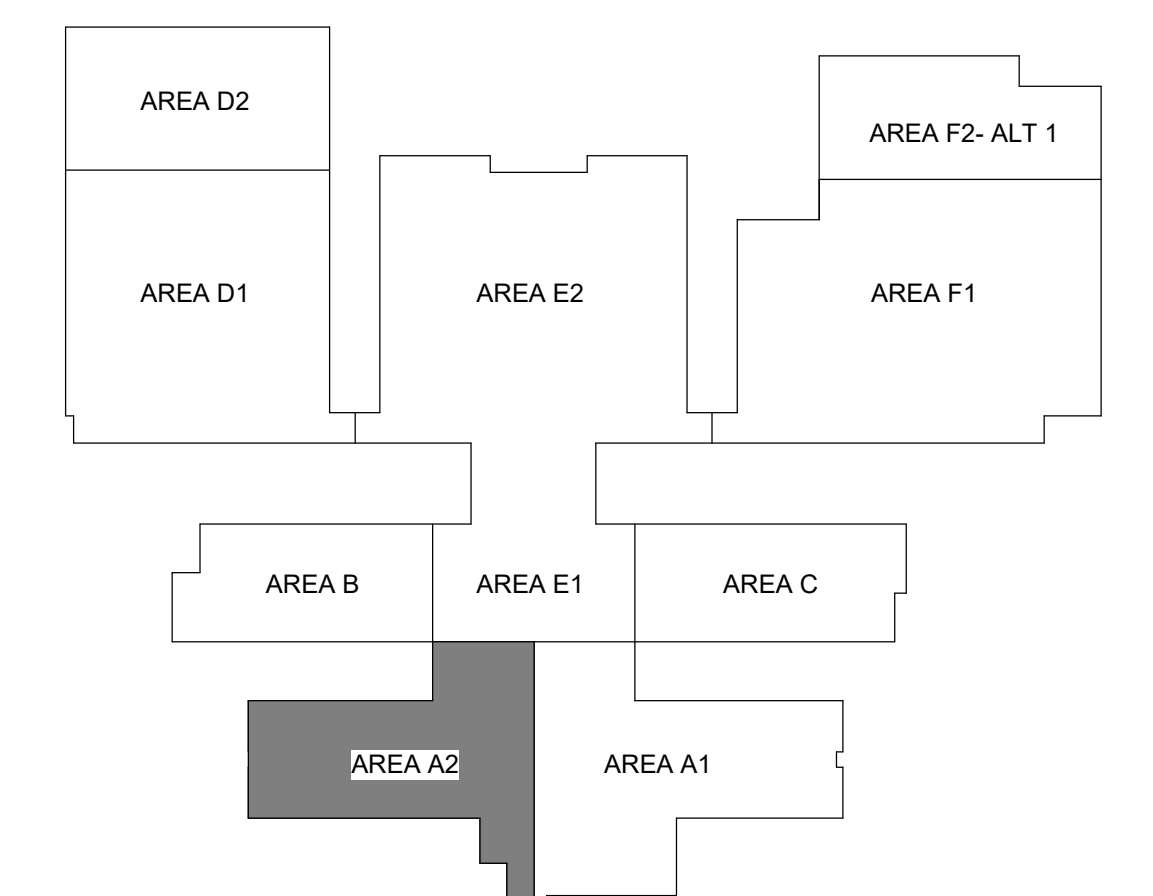
TYPE C - STANDARD OFFICE

- 1 OPEN DESK WORKSURFACE WITH MODESTY PANEL
- 1 LATERAL FILE CABINET/WORKSURFACE
- 1 TALL BOOKCASE AT SOME LOCATIONS, REFERENCE PLANS
- 2 GUEST CHAIRS AT SOME LOCATIONS, REFERENCE PLANS
- 1 TASK CHAIR

TYPE D - STANDARD OFFICE

- 1 OPEN DESK WORKSURFACE WITH MODESTY PANEL
- 1 MOBILE PEDESTAL
- 1 TASK CHAIR

KEY PLAN



A1 FIRST FLOOR FURNITURE PLAN - BLDG A2
1/8" = 1'-0"