



The Paw Print



Dates To Remember

Mar 10	Orchestra Concert @ BCPA 7p-8p
Mar 11	NWEA Testing – Math 5 th & 6 th Grades
Mar 12	NWEA – Math Makeups 5 th & 6 th Grades
Mar 13	PTO Meeting @ Maltby 9:30a
Mar 14	Maltby Movie Night 6p-8p \$2
Mar 17	NO SCHOOL
Mar 17	Maltby Airborne Fundraiser
Mar 18	5 th & 6 th Gd Band Spring Concert @ Maltby 7p
Mar 19	6 th Band Solo & Duet @ Maltby 7p
Mar 24-28	NO SCHOOL – Spring Break
Apr 4	Quarter 3 Ends
Apr 7	NO SCHOOL
Apr 8	Q4 5 th Gd Encores Start
Apr 9	Q4 6 th Gd Encores Start
Apr 10	PTO Meeting @ Maltby 9:30a
Apr 14-17	Scholastic Book Fair
Apr 18	NO SCHOOL
Apr 23	Sucker Pull at lunches
Apr 24	Sucker Pull at lunches
May 2	Maltby Battle of the Books!
May 5-9	Maltby Staff Appreciation Week
May 5	6 th Gd Spring Choir Concert @ BCPA 7p-8p
May 9	Maltby Movie Night 4 th Gd Welcome! 6p-8p \$2
May 15	PTO Meeting @ Maltby 9:30a
May 16	6 th Gd Choir Cedar Point Trip
May 16	6 th Gd Orchestra Cedar Point Trip
May 19	5 th & 6 th Gd Band Finale Concert @ BCPA 7p
May 26	NO SCHOOL
June 2	5 th Gd Spring Concert @ BCPA 7p
June 3	Orchestra Concert @ BCPA 7p
June 11	Field Day!
June 12	6 th Gd Farewell 10a
June 12	LAST DAY OF SCHOOL! ½ day

Greetings Maltby Parents,

Thank you to all of our incoming 5th grade parents who attended our information night - we had a great turn out and we are looking forward to a new group of Bullpups next year! The end of our 2nd trimester is March 14th. Trimester #2 Report Cards will be coming home with students on April 4th- please remember to sign your child's envelope and have them return it to the homeroom teacher- thank you.

March is Reading Month...

We are having a great March is Reading Month with a "career exploration" focus! We have had 2 "Hot Seat" interviews at lunchtime with our parent volunteers to discuss their careers! It has been amazing and we are looking forward to learning about careers from our other parent volunteers!

Movie Night...

We have a Maltby Movie Night coming up on March 14th! These events are great fun and are sponsored by our amazing Maltby PTO. Doors open at 6pm and the movie starts at 6:20pm. PTO will have pizza and concessions for sale and we are watching Wreck-It Ralph on our gymnasium projector. We hope to see lots of Bullpups there.

NWEA Assessments...

Our 5th and 6th graders took their Reading assessments this week and will be taking their Math NWEA Assessments next week. Students take Reading and Math assessments over 2 weeks in their homeroom classrooms. These assessments are computer designed and provide some outstanding student growth information for parents, students, and teachers. Both assessments take about an hour for students to complete. We are planning on sending home results in April. If you would like more information on NWEA assessments, please access our [NWEA Guide](#) on the [Maltby website](#) under Family Resources.

Maltby Leadership...

Thank you to our Maltby Leadership Committee students and staff and our wonderful PTO for sponsoring our first ever "Shave It or Save It" fundraiser! Our students contributed \$650 to make Mr. Aten and me shave our beards! The money will be used to purchase books for the Mott's Children's Hospital Library!

Middle School Math Information for our 6th Grade Families 2025...

For the majority of incoming 7th graders, the most developmentally appropriate math placement is Pre-Algebra (7th Grade Math). Then in 8th grade, students who have met the placement criteria will be invited to take High School Algebra 1. To ensure the most appropriate math placement for each student, multiple data points are used to determine which math course will best meet your student's needs. A small percentage of students may be ready to advance into High School Algebra 1 in 7th grade. To be certain that prerequisite understandings and skills are in place, an Algebra 1 Placement test will be administered to qualifying students.

- Due to the fact that any student taking High School Algebra 1 in 7th grade will be skipping two full years of foundational middle school mathematics, the criteria for the Algebra 1 Placement Test is very rigorous:
 1. Students must have earned an Advanced or Proficient score on the Quantile Benchmark (as measured by Imagine Math).
 2. Students must have also scored in the 90th percentile or higher on the nationally normed NWEA (Measure of Academic Progress).
- For students who meet the criteria, an invitation letter to take the Algebra 1 Placement test will be sent home on Friday, April 11, 2025.
- During the school day on Wednesday, April 30, 2025, the Algebra 1 Placement test will be administered by the BAS Administration and MIS teachers.

Kind Regards,
Mr. Brenner
Mr. Aten



Attendance Information

If your student is going to be absent from school, please use our convenient twenty-four-hour absence call-in line **(810) 299-3688**.

- Please obtain a doctor's note to receive a medically excused absence.

- Please call when your student will be coming in late.

- You must call in each day that your child is absent.

- Please call no later than 9:00 a.m. on the day of the absence.

- Students arriving late to school should be dropped off at the flag pole door (Door # 1).

- **Do not** drive off until your student has rang the doorbell and is **inside** the building.

- Students arriving late to school **must** report to the office to sign in. **Parents do not need to come inside.**

EARLY DISMISSALS:

- Please send in a note for the **office**, if possible, or call ahead for early dismissals by 3:05pm.

- Please call when you arrive and we will send your student out. You do not need to come in.

- **We will only allow students to be signed out by people who are listed on the emergency card unless other arrangements have been made with the office.**

Your cooperation is greatly appreciated. Thank you.



The PTO is a parent teacher organization where all Maltby parents are members. We welcome your ideas and participation!

Deanne Ferrell – President
Mirullia Morneault – Vice President
Michele Mannooch – Treasurer
Lindsay Tupper – Secretary
Lisa Baravik – Teacher Representative

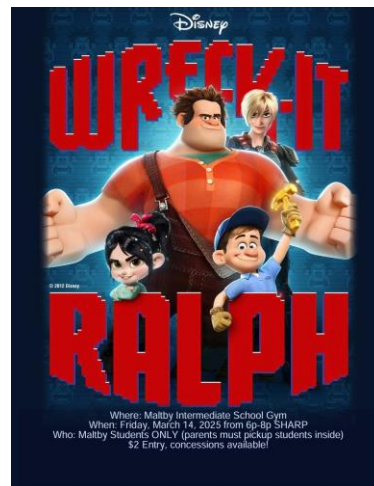
Welcome, Maltby families!

Thank you so much to everyone that donated for our staff appreciation Chocolate Fountain! It was a huge hit.

Thanks to everyone that donated items towards classroom baskets and/or bid on our auction items. It was a great success.

Movie night is next Friday, March 14th. Admission is \$2 (exact change appreciated) and pizza, water and candy will be available for purchase. We need volunteers to make this event possible. Please sign up here:

<https://www.signupgenius.com/go/9040E4FA5AA22A46-55587928-maltby>



Donuts (\$2) and gatorade/apple juice (\$1) will be available for sale every Friday (with the exception of Fridays prior to holiday break).

Please join our group ([Maltby Intermediate School - Parent Group](#)) on Facebook to stay up to date on all things Maltby. * Please remember to answer the quick security questions for the group or you will be auto declined. *

You can also subscribe to our google calendar [here](#).

By having a student enrolled at Maltby, you are automatically a member of our PTO and we would love to have your input at meetings and events! Our meetings are at 9:30am at Maltby on the following Thursdays.

3/13, 4/10, and 5/15

Donuts (\$2) and Gatorade/apple juice (\$1) will be available for sale every Friday (with the exception of Fridays prior to holiday break).

Making the Grade

The WHMI “Making the Grade” contest is back for 2025! We are seeking nominations of exceptional teachers that are currently working in the Livingston County Area.

Tell us about your star teacher and they might win fun money, a special WHMI “Making the Grade” Trophy and a floral bouquet! Nominate your exceptional Teacher below and good luck!

Visit www.WHMI.com to nominate.



a note from...

Maltby **LEADERSHIP**

Maltby Leadership is collecting gently used towels and blankets for the Michigan Humane Society through next Friday, March 14th. Help make a difference for pets in need! Bring in your donations and drop them off in the boxes under the showcase in front of the main office outside the upper gym. Every little bit helps! Thanks for showing that our school has a *paws-itive* huge heart!



The McKinney-Vento Act

Brighton Area Schools is part of a consortium dedicated to supporting students in temporary living situations. Through this program, students receive financial assistance for educational needs, housing referrals, access to clothing and other essentials, general support, and technical assistance. To ensure compliance with federal law, all school staff are asked to help identify students living in the following situations: emergency shelters or transitional housing, motels/hotels, cars, parks, public spaces, shared housing due to loss of housing or economic hardship, or temporarily with a non-parent or guardian.

Our district's homeless liaison is Starr Acromite, and each building has trained staff members ready to provide support. Our consortium contact at the Livingston Educational Service Agency is Candice Olrich.

For more information or assistance, please contact your building principal or Starr Acromite at 810-299-4040.



Maltby 2024/2025

Daily Schedule

Entrance bell rings at 8:37am, Tardy bell rings at 8:50am

1st: 8:50am – 9:53am

2nd: 9:56am – 10:56am

3rd: 11:00am – 12:00pm

LUNCHES

A – 12:00-12:20 eat; 12:20-12:35 recess (5th)

Duncan/Bouhana/Forte, Baravik/Bruestle, Krayner/Orrico

B – 12:05-12:20 recess; 12:20-12:40 eat (5th)

Peters/Dibble, Rozanski/Lashbrook, Shah/Woodard, Gentle/Pinter

C – 12:45-1:05 eat; 1:05-1:20 recess (6th)

Dickinson/Caldwell, Eldred/Zalusky, Robertson/Worthing

D – 12:55-1:10 recess; 1:10-1:30 eat (6th)

Haeussler/Wilson, Lapshan/Witte, Brown/Held, O'Keefe/Kiefer

5th: 1:35pm – 2:35pm

6th: 2:37pm-3:37pm

Cell Phones at MIS

In accordance with the Brighton Area Schools Cell Phone policy, our students at MIS are permitted to bring their cell phones to school. We recognize the necessity and importance of family communication, but unfortunately ringing cell phones and the temptations of new games, cameras, and the technology that accompanies cell phones can present a

distraction for your student and/or others in their classes.

Therefore, at MIS our students:

Turn off cell phones at the beginning of the day and place them in their backpack. Refrain from texting friends or parents during school hours.

Utilize the main office phone to contact parents in the event of an emergency.

We have had great success in keeping Maltby a distraction-free learning environment by following these procedures. In addition, we ask that parents please refrain from calling or texting their student during the school day.

Any messages of an emergency nature can be relayed to students through the front office at 810 299-3600.



Please call before 3:05pm to ensure your child receives the message!

Thank you!

Illness Prevention Best Practices

Keeping Kids (and Families) Healthy

☀ Hand Hygiene

Wash with warm, soapy water for at least 20 seconds or the duration of the ABCs. Wash throughout the day: before eating/drinking, touching your face, after using the restroom or blowing your nose, coughing, etc. Avoid touching your face and teach kids not to put their hands in their mouths.

☀ Don't Share

Personal items like drinks, water bottles, chapstick/makeup, hair brushes, hats, ear buds, etc.

☀ Healthy Eating

Avoid sugary drinks and snack foods, these don't do much for the body. Choose plenty of water, drinking more than usual when feeling run down, exercising, or when it's warmer outside. Nutrients from fruits, vegetables, whole grains, healthy fats, and lean proteins help your body stay energized and keep the immune system boosted.

☀ Sleep

The body needs sleep to recover and recharge. Avoid excessive screen time (TV, tablets, phones all count!), especially right before bed. Keep a bedtime routine to help get to sleep easier.

Sleep goals:

toddlers (1–2 years): 11–14 hours, including naps

preschool (3–5 years): 10–13 hours, including naps

school-age (6–13 years): 9–12 hours

teens (14–17 years): 8–10 hours

☀ Consider Vaccines

Many illnesses are preventable through the use of vaccines. Sometimes after being vaccinated, a person may still experience symptoms if exposed to certain germs but vaccines can help a person feel less ill and also recover faster. Decide if vaccinations are the right choice for your family.

☀ Cover and Clean

Teach kids to cover their coughs and sneezes with their elbow or to use a tissue. Hands should be cleaned with soap and water if used for coughing, sneezing, rubbing eyes, or blowing the nose. If washing is not available, hand sanitizer should be used.

☀ Stay Home

If your child feels unwell or is running a fever, keep them home from school. This helps an already run-down child from being exposed to other germs while in school and also helps prevent spread to others in the classroom. This applies to adults in the workplace as well!



A doggo from University Hospitals keeps the world safe by staying healthy at LH Patient Care 2019/08/08 10:00:00. Keep dogs green, keep all safe!

[MDHHS Disease Specific Information Chart](#)

[Health Forms and Medical Action Plans](#)

[Important Links & Resources \(LCHD, MDHHS, CDC\)](#)



ENROLL NOW FOR THE 2025-2026 SCHOOL YEAR

BRIGHTON AREA SCHOOLS

WWW.BRIGHTONK12.COM

Enrollment for the 2025-26 School Year for Brighton Area Schools Residents is open.

School of Choice Options for Non-Residents:

Enrollment is open for JK, K & 5th-12th Grade Students

Enrollment Opens April 1st for 1st-4th Grade Students

Visit our website for more information and to start the application process:

<https://www.brightonk12.com/district/enrollment>

Enrollment Document Checklist Grades 1-12

(All documentation must be provided by the parent or legal guardian)

- In order to complete enrollment for your student(s) to attend Brighton Area Schools please complete Pre-Enrollment (access link is available on the enrollment webpage) and upload the required documents for your student(s) in Pre-Enrollment.
- Keep your login information, as it will be needed to make updates to the submitted information. Files should be in PDF format – screenshots and photos will be rejected if they are of poor quality.
- The enrolling office will contact you on the status of the enrollment once the submission has been reviewed. Responses are not immediate, especially during the busy enrollment months of February-June & August, we appreciate your patience.

SCHOOL OF CHOICE: A SOC application must be approved prior to a non-resident submitting enrollment. Visit the SOC web page for information.

REQUIRED FORMS & DOCUMENTS:

- Student's Birth Certificate
- Parent or Guardian Identification - Photo ID (Driver's License); Must be valid and unexpired
- Proof of Residency- Provide ONE from Column A
- If your photo ID does NOT reflect the current enrolling address; we will require ONE additional proof of residency from Column B. Parent or Guardian's name and enrolling address must be on the full statement.

Column A (ONE Required) Primary Residency Document	Column B (ONE Required) Additional Supporting Document
<ul style="list-style-type: none"> • Property Tax Statement (Must be current) • Signed Lease Agreement with valid start and end dates; Full Document required and signatures must be included • Property Tax Transfer Affidavit- for those who have recently closed on a home within 60 days. (No Purchase Agreement can be accepted) 	<ul style="list-style-type: none"> • Utility Bill - please provide entire statement <ul style="list-style-type: none"> ◦ Consumer Energy ◦ DTE ◦ Water ◦ Cable/ Internet

- Shared House Affidavit -if applicable; will be required with proof of residency documents; please refer to form
- Current Immunization Record or Immunization Waiver (Waiver must be for the current enrollment school year)
- Affirmation of Prior Discipline / Behavior Form from previous school; this applies to all students in grade 9-12
- Most recent Student Transcript (grades 10-12) or Report Card (grades 1-9) from previous school
- IEP or 504 Plan - If applicable. If student receives special service, please provide the current IEP or 504 Plan
- MIHSAA Transfer Form - For grades 10-12 only



BRIGHTON AREA SCHOOLS 2025-2026 SCHOOL YEAR ENROLLMENT DATES

Resident Enrollment

Enrollment open for all grades starting February 1st 2025.

School of Choice Options For Non-Residents

LIMITED: Elementary Students (1st - 4th Grades)
The application window is open from April 1st - April 30th 2025

UNLIMITED: JK, K & 5th - 12th Grade Students
and The Bridge. The application window is open from February 1st - August 8th 2025

Enrollment Questions?

www.brightonk12.com/enrollment
or call (810) 299-3695

**PLEASE VISIT OUR
WEBSITE STARTING FEBRUARY 1ST**
WWW.BRIGHTONK12.COM/ENROLLMENT



Superintendent's Newsletter



[Click Here for the
BAS Strategic Plan -
Parent Survey 2025](#)

BRIGHTON AREA SCHOOLS 2024-25 CALENDAR

MARCH	14	Friday	End of 2nd Trimester – Grades JK-6
	17	Monday	NO SCHOOL for students – Records JK-6, PD for 7-12
	24	Monday	NO SCHOOL for students or staff – Spring Break Begins
	31	Monday	School Resumes
APRIL	4	Friday	End of 3rd Quarter – Grades 7-12
	7	Monday	NO SCHOOL for students – Conf Comp JK-6, Records 7-12
	18	Friday	NO SCHOOL for students or staff – Good Friday
MAY	26	Monday	NO SCHOOL for students or staff – Memorial Day
JUNE	12	Thursday	LAST DAY OF SCHOOL (Half Day for Students)

Parent Feedback Requested Strategic Plan

The Brighton Area Schools is once again seeking parent feedback. The district launched its current [Strategic Plan](#) in 2022 and has gathered feedback from students, parents, and staff regarding key targets within our strategic plan. This feedback is valuable in helping us to gauge our progress and identify areas for further improvement as a district. The student, parent, and staff surveys contain similar questions, slightly adjusted for the audience, and once again include an opportunity for open-ended suggestions at the end. If you have a moment and are willing to share your perspective, the survey takes only a few minutes—depending on how much you share in the comment boxes. Thank you for your time and consideration.

Maltby

[Calendar Link](#)

[County Common Calendar – Winter Breaks and Spring Breaks](#)

MALTBY A/B CALENDAR 2024-2025

Students and staff
Staff only
No School
Half day
New Quarter Encore
End of Trimester

March 2025						
M	T	W	T	F		
3 A	4 B	5 A	6 B	7 A		
10 B	11 A	12 B	13 A	14 B		
17	18 A	19 B	20 A	21 B		
24	25	26	27	28		
31 A	1	2	3	4		

April 2025						
M	T	W	T	F		
31	1 B	2 A	3 B	4 A		
7	8 B	9 A	10 B	11 A		
14 B	15 A	16 B	17 A	18		
21 B	22 A	23 B	24 A	25 B		
28 A	29 B	30 A	1	2		

May 2025						
M	T	W	T	F		
28	29	30	1 B	2 A		
5 B	6 A	7 B	8 A	9 B		
12 A	13 B	14 A	15 B	16 A		
19 B	20 A	21 B	22 A	23 B		
26	27 A	28 B	29 A	30 B		

June 2025						
M	T	W	T	F		
2 A	3 B	4 A	5 B	6 A		
9 B	10 A	11 B	12	13		
16	17	18	19	20		
23	24	25	26	27		
30	1	2	3	4		

A=5th Grade Year Long Encores & 6th Grade Quarterly Encores
B=6th Grade Year Long Encores & 5th Grade Quarterly Encores

The BASE Foundation is proud to sponsor:
Part of a Parenting Series

DRUGS, ANXIETY & DEPRESSION

WHAT TO LOOK FOR



KRIS NELSON

FORMER BRIGHTON HIGH SCHOOL SOCIAL WORKER

Social worker and Prevention Specialist

THURSDAY

MARCH 27, 2025 • 7:00 — 8:30 PM

WHERE



ZOOM MEETING ID: 88063961008

ZOOM LINK: <https://us02web.zoom.us/j/88063961008>

CONTACT

info@BASE-Foundation.com

FREE ADMISSION - ZOOM ONLY

BROUGHT TO YOU BY:





Toppermost Beatles Tribute!

MAY
17

7:30
PM

ONLINE
\$22

AT DOOR
\$24



Celebrating 30 years
BRIGHTON CENTER
for the performing arts

www.BrightonPerformingArts.com

(810) 299-4130

Brighton Center for the Performing Arts
(7878 Brighton Rd, Brighton, MI 48116)

BOOK TICKETS

Livingston Arts Council Proudly Presents

GOT ART



STUDENT ART EXHIBIT

Secondary Exhibit - March 4 - 9

Elementary Exhibit - March 11 - 16

4 - 8pm Weekdays; Noon - 5pm Weekends



LIVINGSTON ARTS COUNCIL | 123 W. GRAND RIVER AVE | HOWELL MI 48843
517-540-0065 | HOWELLOPERAHOUSE.COM

Middle School Math Information 2025:

For the majority of incoming 7th graders, the most developmentally appropriate math placement is Pre-Algebra (7th Grade Math). Then in 8th grade, students who have met the placement criteria will be invited to take High School Algebra 1. To ensure the most appropriate math placement for each student, multiple data points are used to determine which math course will best meet your student's needs. A small percentage of students may be ready to advance into High School Algebra 1 in 7th grade. To be certain that prerequisite understandings and skills are in place, an Algebra 1 Placement test will be administered to qualifying students.

- Due to the fact that any student taking High School Algebra 1 in 7th grade will be skipping two full years of foundational middle school mathematics, the criteria for the Algebra 1 Placement Test is very rigorous:
 - a. Students must have earned an Advanced or Proficient score on the Quantile Benchmark (as measured by Imagine Math).
 - b. Students must have also scored in the 90th percentile or higher on the nationally normed NWEA (Measure of Academic Progress).
- For students who meet the criteria, an invitation letter to take the Algebra 1 Placement test will be sent home on Friday, April 11, 2025.
- During the school day on Wednesday, April 30, 2025, the Algebra 1 Placement test will be administered by the BAS Administration and MIS teachers.



Immunization Requirements



Did you know? Since 1978, Michigan law (PH Code: 333.9208) requires that each student possess a certificate of immunization or valid immunization waiver at the time of registration or no later than the first day of school upon entry into seventh grade.

Is your child ready for 7th Grade?


Students entering 7th Grade need to have the following immunizations by the start of the school year:

- Tdap (tetanus, diphtheria, pertussis) - 1 Dose eligible at age 11
- Meningococcal Conjugate (MCV4) - 1 Dose eligible at age 11
- *4 doses DTP or DTaP, 1 dose must be at or after 4 years of age
- *4 doses of Polio, 3 doses if dose 3 was given at or after 4 years of age
- *2 doses of MMR at or after 12 months of age
- *3 doses of Hepatitis B
- *2 doses of Varicella (Chickenpox) at or after 12 months of age or current lab immunity or documented history of varicella disease.

* These are also required vaccinations for Kindergarteners and transfer students. They are not new vaccinations.

Parents or guardians choosing to decline vaccines must obtain a certified non-medical waiver from a local health department prior to the school year.

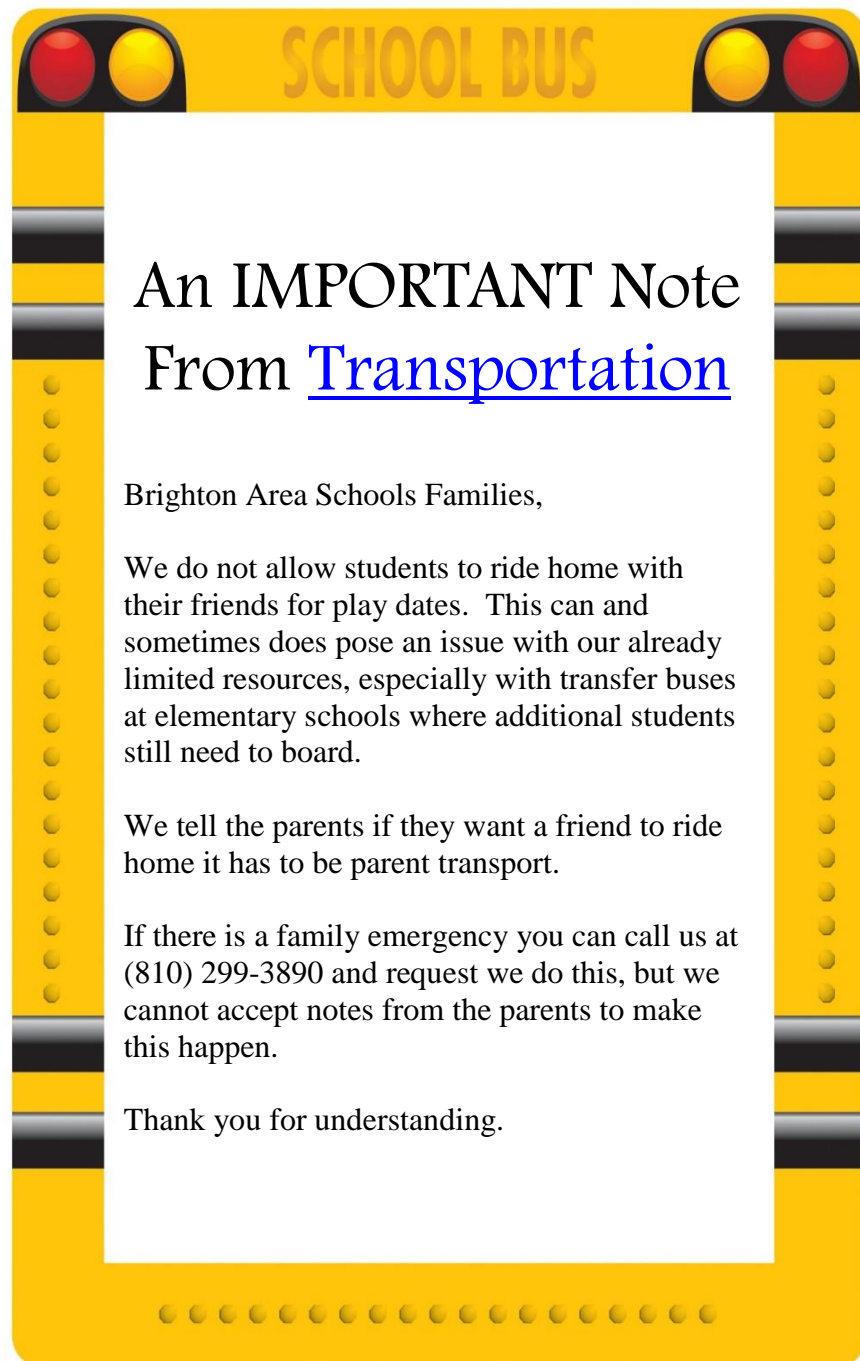
A student who fails to meet the immunization requirement or have a valid waiver, may not be admitted to school.



To schedule Immunization or Waiver appointments, visit www.LCHD.org.

← **Don't wait until August! Appointments are available year-round.**

Updated February 2023





SERIOUSLY, DON'T MISS OUT!

**ORDER A
YEARBOOK**

YEARBOOKS ON SALE NOW
LIKE, RIGHT NOW

USE OUR ORDER NUMBER WHEN YOU LOG ON:
3719
Maltby Intermediate School

 YEARBOOKORDERCENTER.COM



SUBSTITUTE POSITIONS AVAILABLE

- Substitute Teachers
- Substitute Paraprofessionals
- Other Support Staff

To Apply Visit
 **EDUStaff.org**
 or call 877.974.6338



Brighton Area Schools

IS HIRING

Immediate openings in the following areas:

- Custodial
- Food Service
- Paraprofessional

If you are interested in joining our team, please complete an application today.

For Food Service and Paraprofessional openings, go to **www.brightonk12.com** - Departments/ Human Resources to complete an application.

For Custodial openings, contact:

1. Lisa Clark at **(810) 299-4115** -or-
2. Human Resources at **(810) 299-4090**



P: (810) 299-4000
F: (810) 299-4092



125 South Church Street
Brighton, MI 48116

www.brightonk12.com



Now Hiring

BUS DRIVERS

BeaBusDriver.org

STARTING PAY \$20.37 - \$22.62 PER HOUR
 PAID TRAINING • PAID HEALTH BENEFITS • or \$5,000 CASH IN LIEU
 RETIREMENT BENEFITS • SIGN ON BONUS

810-299-3890