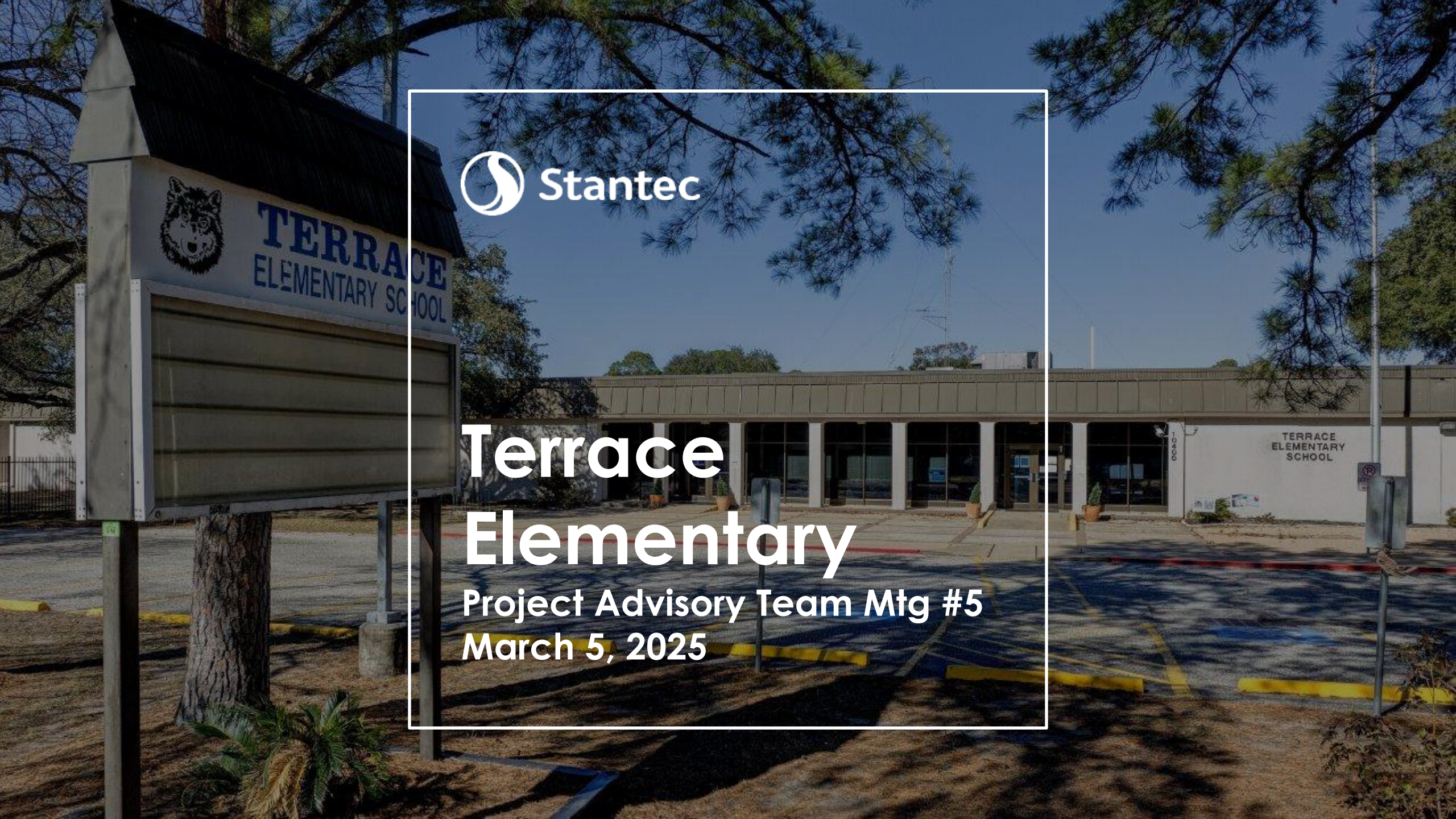




# Terrace Elementary

Project Advisory Team Mtg #5  
March 5, 2025





# Welcome + Introductions

## SPRING BRANCH ISD

Haley Davis	Terrace Elementary, Principal
Travis Stanford	Associate Superintendent for Operations
Geoff Bay	Director of Planning & Construction
Noel Moreno	Planning & Construction, Project Manager

## STANTEC ARCHITECTURE

Jennifer Henrikson	Architect - Principal
Tracy Eich	Architect - Sr Design Principal
Gary Dunn	Architect - Sr Project Manager
Jon Pippert	Architect - Sr Project Architect
Mark Jackson	Architect - Project Director
Gretchen Diesel	Interior Design - Sr Interior Designer
Raul Pinol-Marti	Architect – Sr Project Designer

## TCE PROJECT ADVISORY TEAM (PAT)

Name	Member Type (Parent, Teacher, Community)
------	--



# Agenda: PAT Mtg #5

1. **PAT Process:** Project/Process Status Update
2. **PAT Mtg #4: Floor Plan & Site Plan Updates**  
Site Plan / Floor Plan Updates
- 3 **PAT Mtg #4: Recap**  
Exterior Architectural Expression  
Interior Architectural Expression
4. **PAT Mtg #5: Engagement Activity**  
Preliminary Exterior Views  
PAT Poll: Exterior Design Progress
5. **PAT Mtg #5: Engagement Activity**  
Preliminary Interior Views  
PAT Poll: Interior Design Progress
6. **Next Steps:** What's Happening Next

# Item

# 1

## PAT PROCESS





# Project Scope | **New Terrace Elementary School**

- **Replacement of Terrace Elementary School** with a new building and site elements to serve a **750 student population**
- **Off Site Transition:** Campus will relocate to East Transition Campus during construction of the new building
- **Approx. 103,500 SF** building per SBISD Educational Specifications
- **22 months** total construction period
- **January 2028** New Terrace Elementary **opens!**



# PAT Engagement – Project Advisory Team (PAT) Charge

## OVERVIEW

A Project Advisory Team (PAT) will be chartered for the planning of a replacement for **Terrace Elementary School** under the school's project in the 2017 Bond Program.

## CHARGE

The PAT will work collaboratively and cooperatively with the architect and SBISD Project Manager **to conceptualize, develop and refine the project's goals and design.**

**The PAT will advise on recommendations regarding the interior and exterior appearance** of the replacement of Terrace Elementary School.

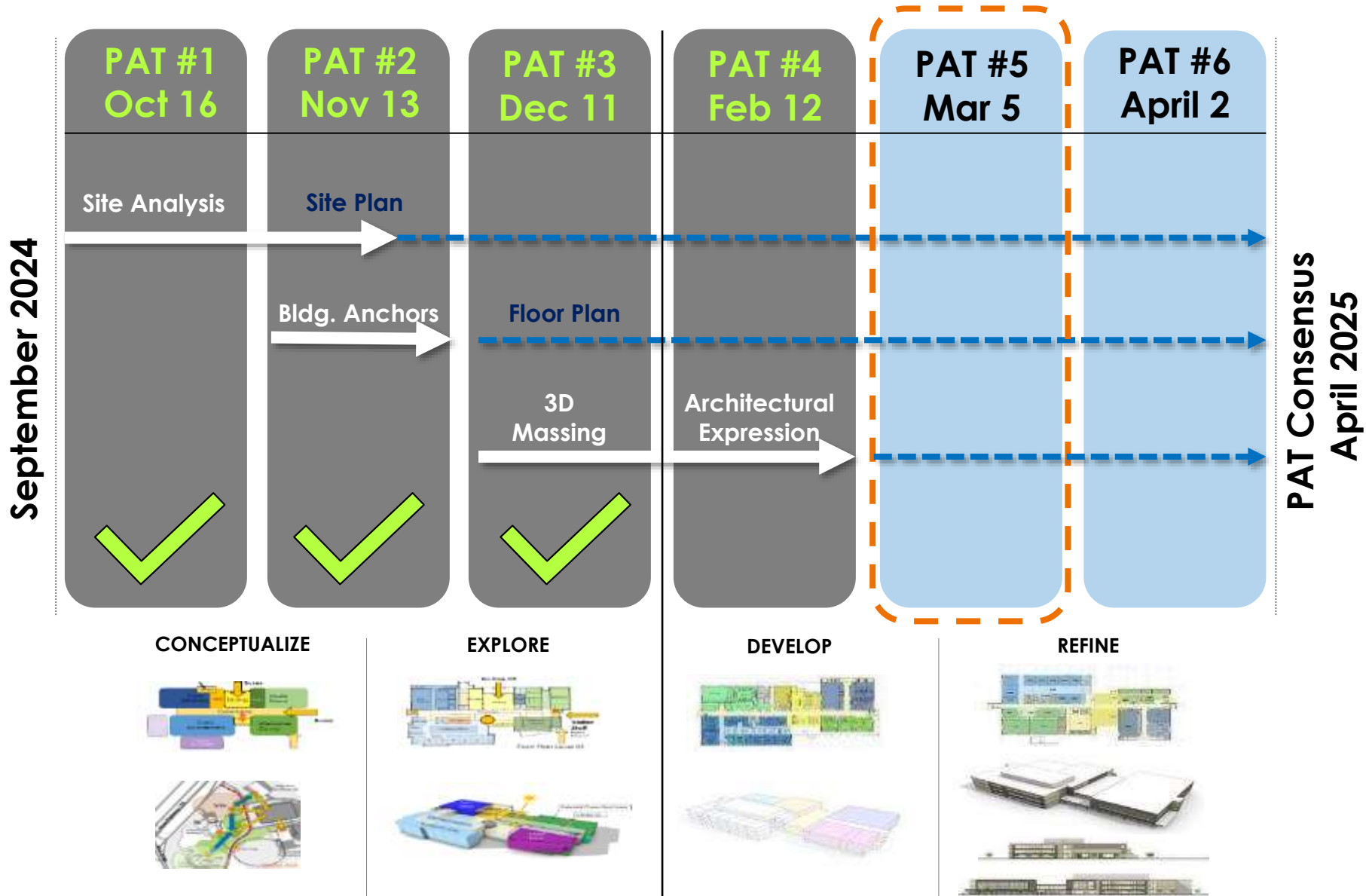
The PAT will **reach a proposed recommendation through consensus.**

**These recommendations will be presented to the Superintendent + Board of Trustees for approval.** *The Board of Trustees may act upon the recommendations developed with PAT input by approving, amending, altering or not approving all or any part of the recommendations.*

**Areas of focus from which the PAT should refrain include** recommendations regarding school programs, policies and procedures, boundaries of district facilities, instructional arrangements and/or educational pedagogy decided upon and/or subject to District, State and Federal laws.

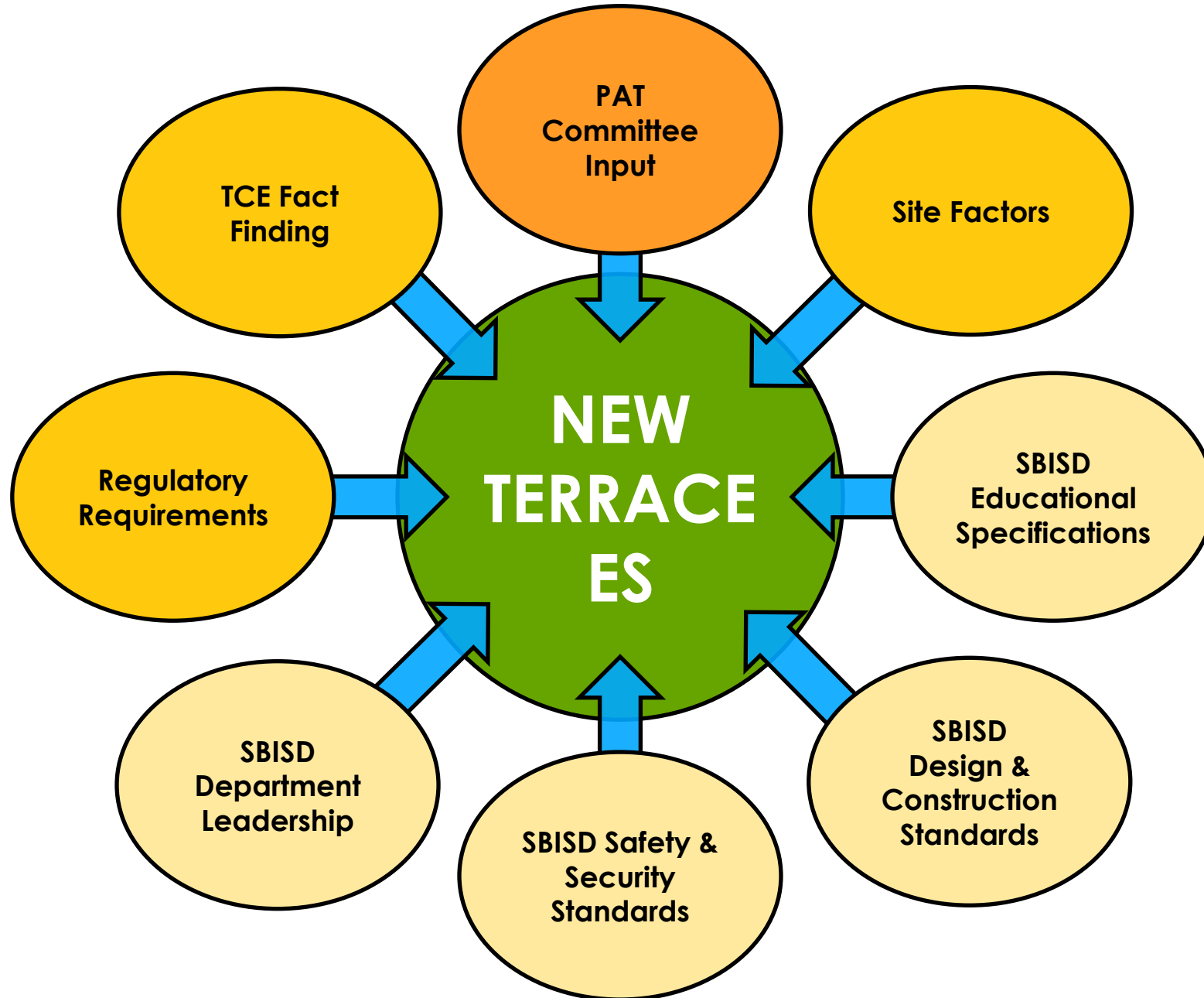


# PAT Engagement – Overview





# PAT Engagement | Design Influences



# PAT Engagement – **Input**

*“Recipe” for creating the NEW Terrace Elementary*

## **District & Regulatory Ingredients**

- SBISD Educational Specifications
- SBISD Design & Construction Standards
- CITY adopted Codes & Ordinances
- STATE Accessibility Requirements

## **Campus Inspired Ingredients**

- CAMPUS Fact Finding Meetings
- **PAT Engagement**
- SBISD Departmental Leader Reviews
- CAMPUS End User Reviews
- Existing Site Influences



# Item 2

## **PAT MEETING #5** **Floor Plan & Site Plan Updates**





## TERRACE ELEMENTARY SCHOOL DESIGN - GUIDING PRINCIPLES

**A welcoming and inviting facility for our students, staff and parents.**

An inviting place where the community is proud to gather and send their children to school.

**A learning environment with connections to the outdoors.**

A place with opportunities for our students and staff to connect visually and physically to the outdoor environment.

**An engaging learning environment where students are excited to collaborate and learn.**

A variety of flexible spaces that are accessible and inclusive for all students and staff.

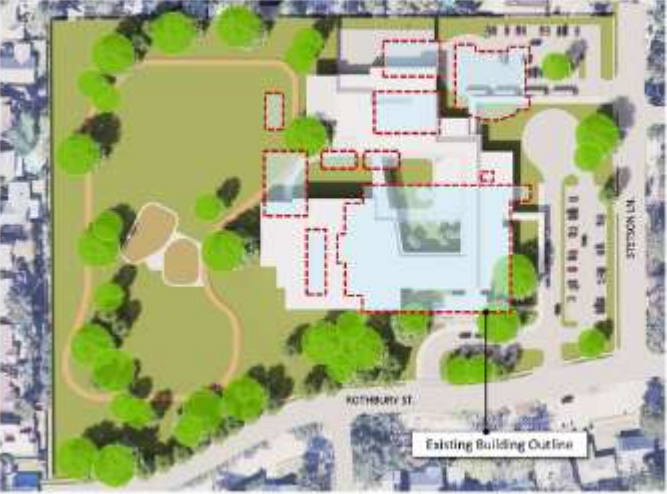
**A campus reflecting our diversity and engaging to the community.**

A place to celebrate the diverse and growing community.



**PAT Mtg#4 Information: Schematic Design**

**TCE Schematic Design Site Plan Overview**



- Site Plan (Survey, Building, Trees, Utility)
- Existing Building Perimeter
- Parent drop-off/ Visitor entry
- Bus drop-off
- Building Services
- Play Fields
- Front Plaza
- After Hours Building Access

Existing Building Outline

**TCE Schematic Design Floor Plan Elements**



- First Floor Plan
- Administration
- Media Center & Multi-Purpose
- Grade Level Pods (K-5<sup>th</sup>)
- Special Education
- Art, Science & Music
- Learning Courtyard
- Dining
- Kitchen & Service
- Gym & Outdoor Play

## Does the Schematic Design Respond to Guiding Principles?

### TERRACE ELEMENTARY SCHOOL DESIGN - GUIDING PRINCIPLES

#### A welcoming and inviting facility for our students, staff and parents.

An inviting place where the community is proud to gather and send their children to school.

#### A learning environment with connections to the outdoors.

A place with opportunities for our students and staff to connect visually and physically to the outdoor environment.

#### An engaging learning environment where students are excited to collaborate and learn.

A variety of flexible spaces that are accessible and inclusive for all students and staff.

#### A campus reflecting our diversity and engaging to the community.

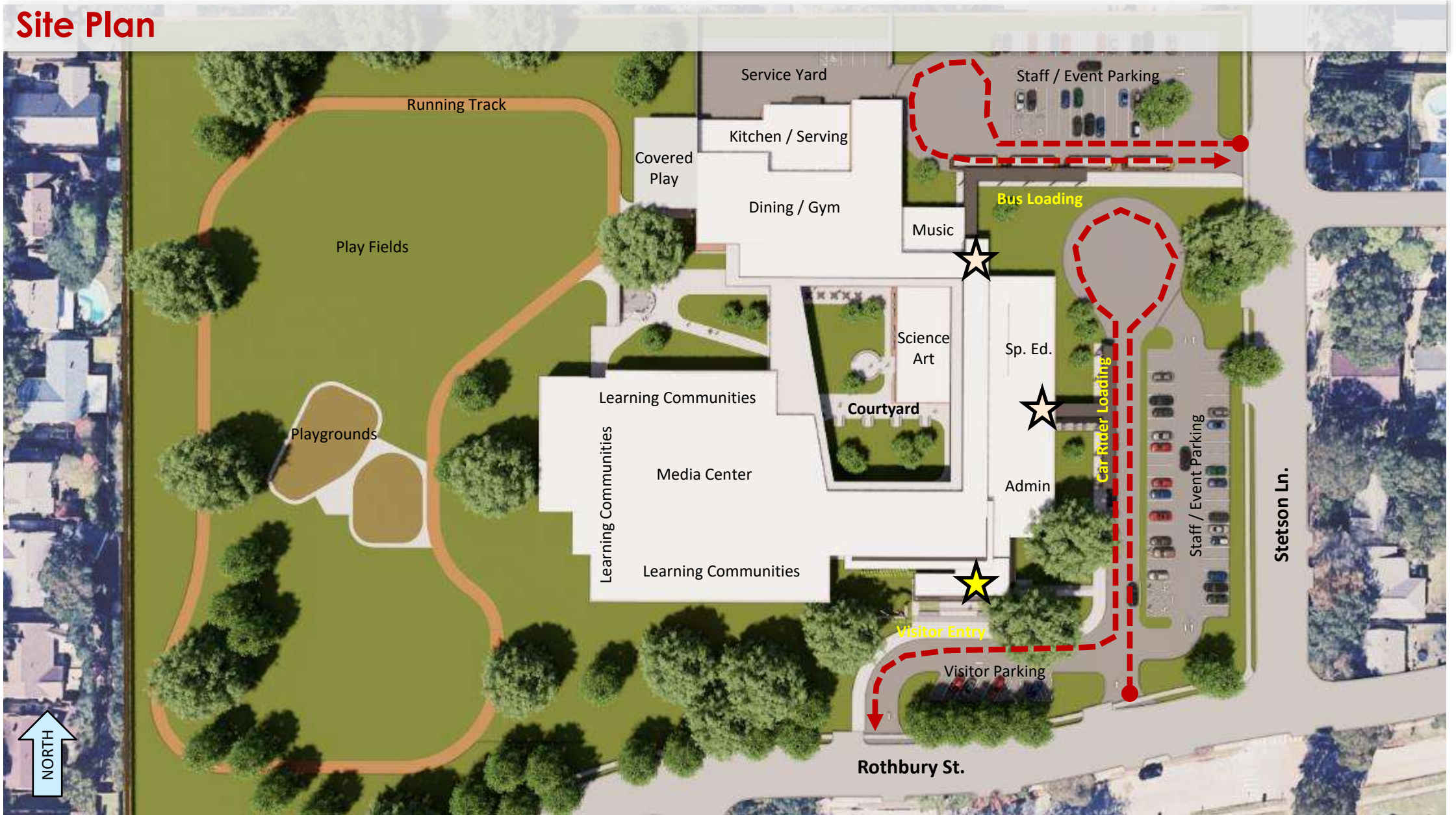
A place to celebrate the diverse and growing community.

1	<b>Site &amp; Context</b> Connection to Outdoors Welcoming and Inviting Facility	YES <input checked="" type="checkbox"/>	NO <input type="checkbox"/>
		YES <input checked="" type="checkbox"/>	NO <input type="checkbox"/>
2	<b>Building Organization</b> Engaging Learning Environment Support Students, Staff, Parents	YES <input checked="" type="checkbox"/>	NO <input type="checkbox"/>
		YES <input checked="" type="checkbox"/>	NO <input type="checkbox"/>



# PAT Mtg#5: Design Progress | Preliminary Exterior Views

TERRACE ELEMENTARY SCHOOL





# PAT Mtg#5: Schematic Design Progress

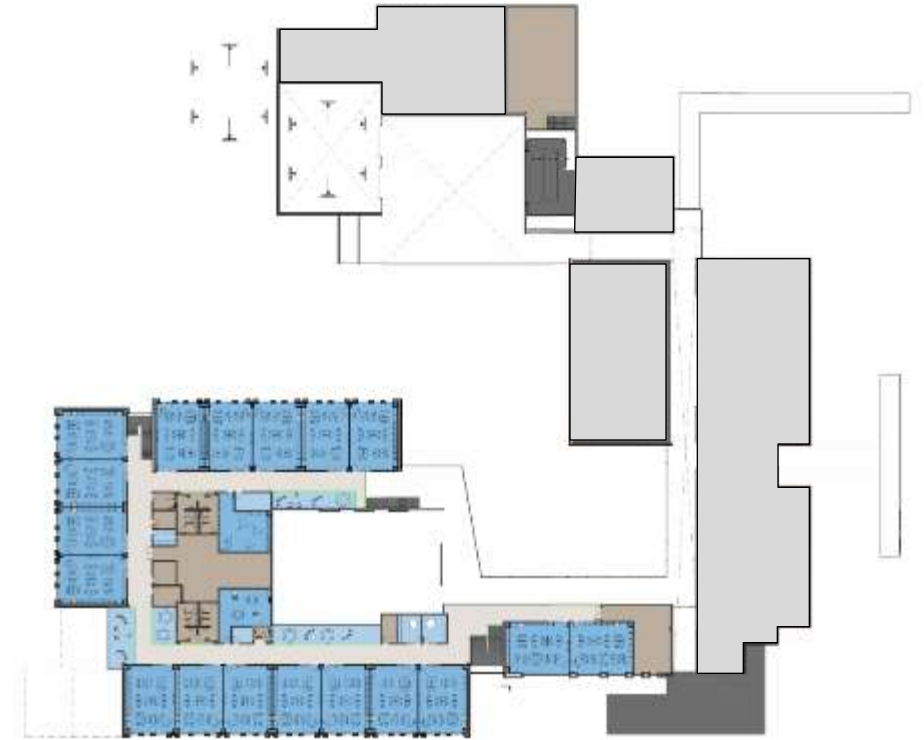
## TCE Design Progress Floor Plan Updates

TERRACE ELEMENTARY SCHOOL



### First Floor Plan

- Administration
- Library + Multi-Purpose
- K + 1<sup>st</sup> + 2<sup>nd</sup> Grade
- Educational Support Spaces
- Special Education
- Art, Science, Music
- Gym + Covered Play
- Dining / Kitchen



### Second Floor Plan

- 3<sup>rd</sup> + 4<sup>th</sup> + 5<sup>th</sup> Grade
- Educational Support Spaces

### 34 Classrooms

- 5 = Kinder
- 5 = 1<sup>st</sup> grade
- 6 = 2<sup>nd</sup> grade
- 6 = 3<sup>rd</sup> grade
- 6 = 4<sup>th</sup> grade
- 6 = 5<sup>th</sup> grade



# PAT Mtg#5: Schematic Design Progress

## TCE Design Progress Floor Plan Updates

TERRACE ELEMENTARY SCHOOL



### ▶ Key Plan Updates:

1. Administration / MPR
2. Dining / Gym
3. Media Center
4. Art / Music / Science
5. Learning Communities



# PAT Mtg#5: Schematic Design Progress

## TCE Design Progress Floor Plan Updates

TERRACE ELEMENTARY SCHOOL



### Key Plan Updates:

- ▶ 1. Administration / MPR
- 2. Dining / Gym
- 3. Media Center
- 4. Art / Music / Science
- 5. Learning Communities



# PAT Mtg#5: Schematic Design Progress

## TCE Design Progress Floor Plan Updates



### Key Plan Updates:

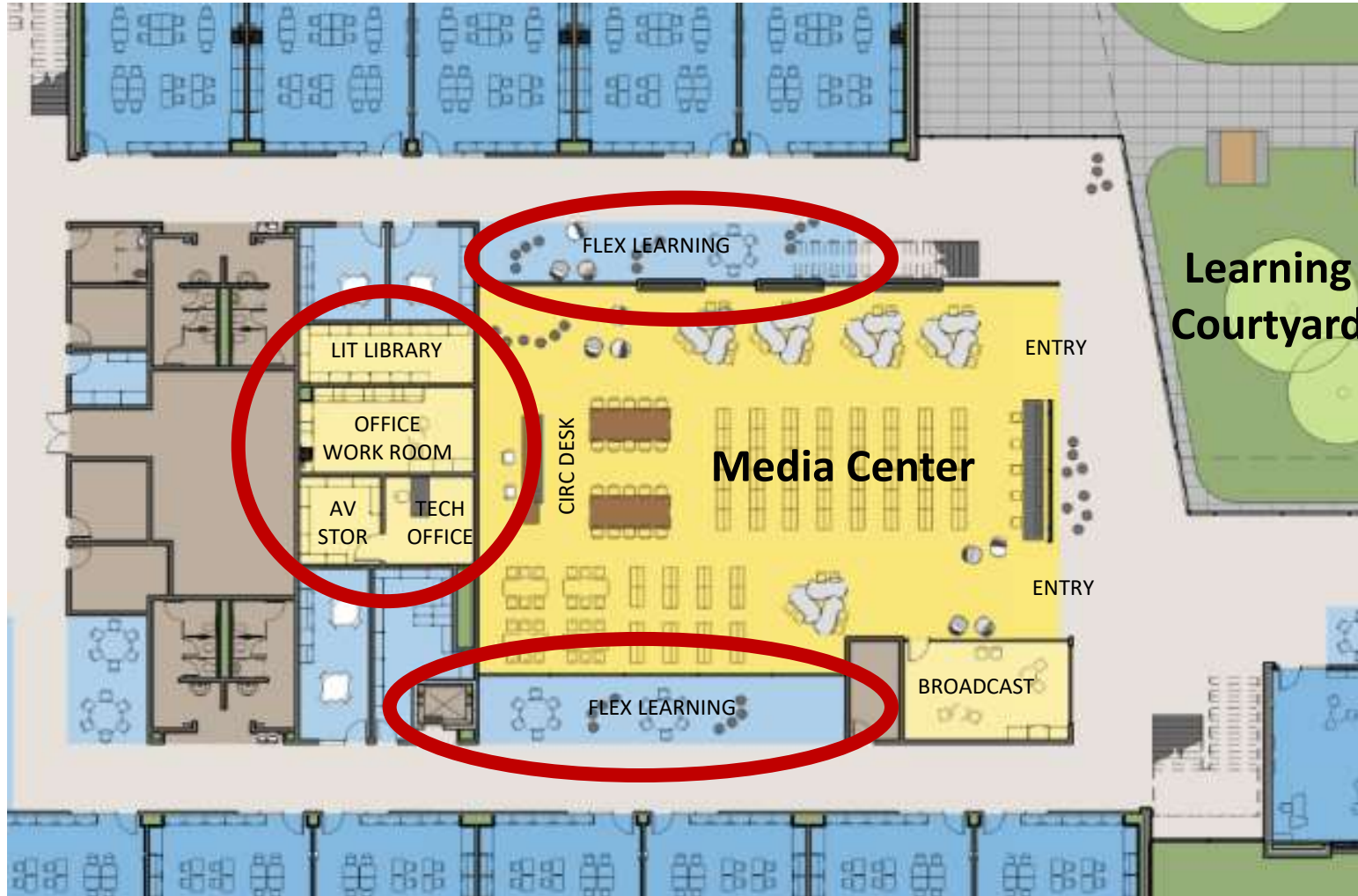
1. Administration / MPR
- ▶ 2. Dining / Gym
3. Media Center
4. Art / Music / Science
5. Learning Communities



# PAT Mtg#5: Schematic Design Progress

## TCE Design Progress Floor Plan Updates

TERRACE ELEMENTARY SCHOOL



### Key Plan Updates:

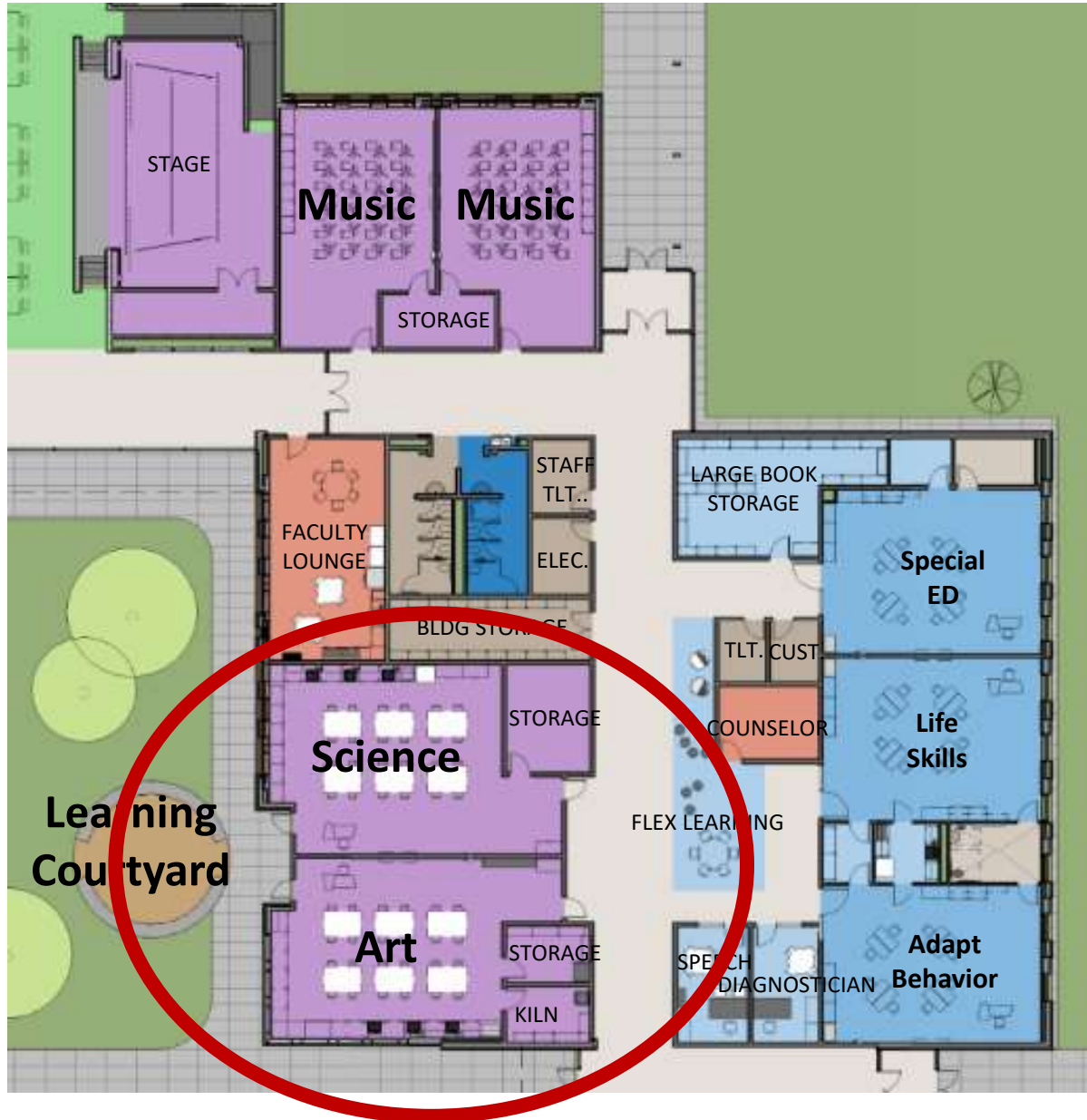
1. Administration / MPR
2. Dining / Gym
- ▶ 3. Media Center
4. Art / Music / Science
5. Learning Communities



# PAT Mtg#5: Schematic Design Progress

## TCE Design Progress Floor Plan Updates

TERRACE ELEMENTARY SCHOOL



### Key Plan Updates:

1. Administration / MPR
2. Dining / Gym
3. Media Center
- ▶ 4. Art / Music / Science
5. Learning Communities



# PAT Mtg#5: Schematic Design Progress

## TCE Design Progress Floor Plan Updates

TERRACE ELEMENTARY SCHOOL



**LEVEL 1**



**LEVEL 2**

### Key Plan Updates:

1. Administration / MPR
2. Dining / Gym
3. Media Center
4. Art / Music / Science
5. Learning Communities

# Item

# 3

## **PAT MEETING #4** Recap Exterior & Interior Expressions





# PAT Mtg#4 Engagement: Architectural Exterior Expression

**PAT Mtg #4 – EXTERIOR Architectural Expression Worksheet**

Terrace Elementary School Name: \_\_\_\_\_

---

**Context:** How should surrounding context inform the TCE Architectural Expression?

1 — 2 — 3 — 4 — 5

Fits In Stands Out

---

**School Identity:** What does the building communicate about anticipated experience?

1 — 2 — 3 — 4 — 5

Formal Informal

---

**Guiding Principles:** How should front entry communicate a welcoming/inviting facility?

1 — 2 — 3 — 4 — 5

Building Element Outdoor Element

PAT Member Responses:

11 People at PAT Mtg 4

✓ = Consensus

## PAT Feedback: Individual Completion of Architectural Expression Worksheet

Think about where you are along the reference scale between the left/right images.

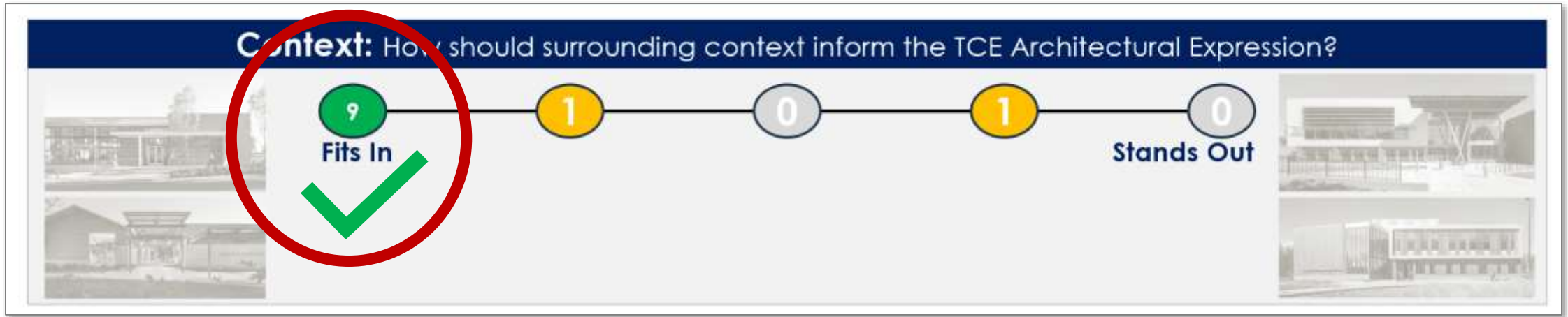
Make notes of what elements you think could apply to the new design.



# PAT Mtg#4 Engagement: Architectural Expression PAT Feedback

## Exterior

PAT Member Responses:  
11 People at PAT Mtg 4



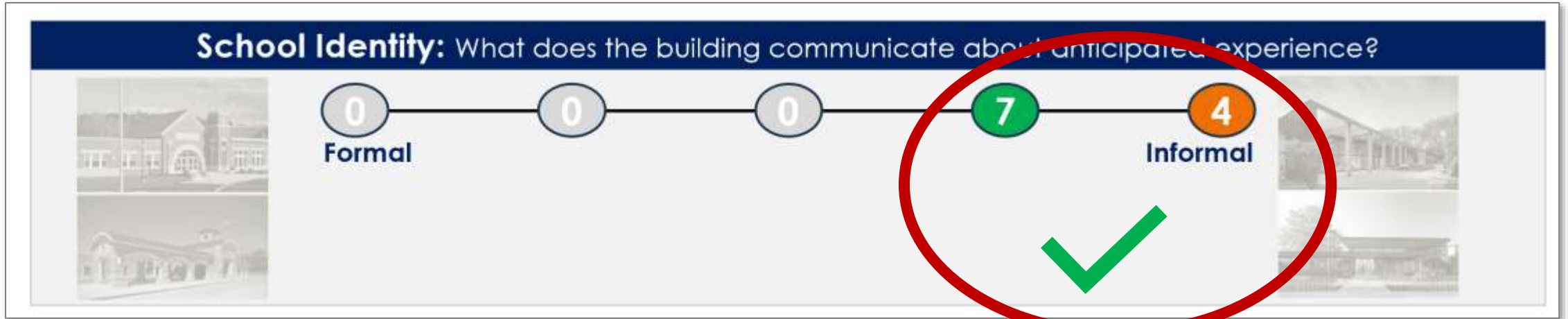
### PAT Comments

- Keep it feeling like part of the neighborhood and not stand out like a sore thumb
- Use neutral, natural tones
- Look more natural within the trees
- Keep the geometry simple, no funky colors or structures
- Utilize colored glass to emulate colored fence panels



## Exterior

PAT Member Responses:  
11 People at PAT Mtg 4



### PAT Comments

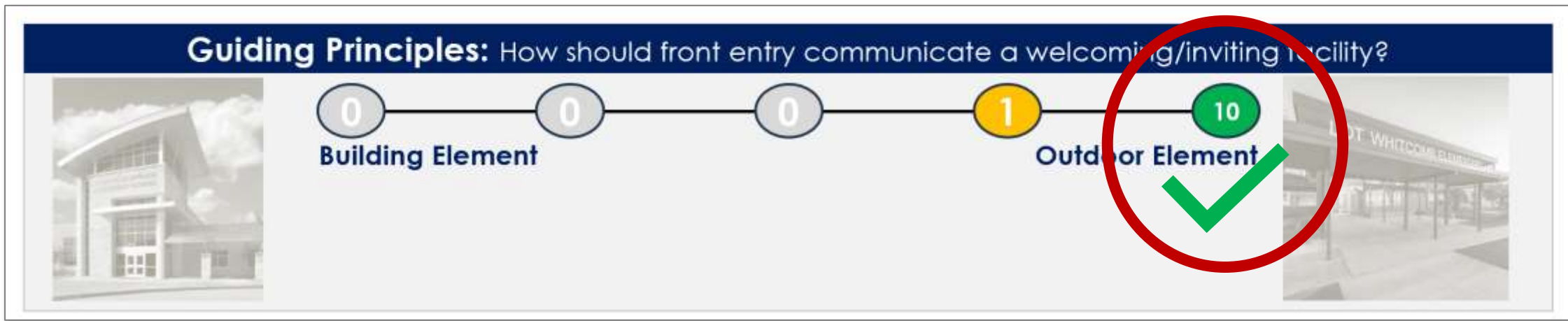
- Feels more welcoming, casual and relaxed
- Allows clean lines and a not too modern feel
- More fitting for outdoor connections
- Keep the low profile with large walkway approach
- “Informal” pairs well with “Fits In” – welcoming to kids and adults
- “Formal” is not as inviting, feels institutional



# PAT Mtg#4 Engagement: Architectural Expression PAT Feedback

## Exterior

PAT Member Responses:  
11 People at PAT Mtg 4



### PAT Comments

- Smaller scale and welcoming
- Allows room for outdoor gathering spaces
- Allows for natural light and shading
- Earthy and Casual... height should feel approachable
- Flows outdoor to indoor
- Like splash of green color in image
- “Building Element” is too grandiose and traditional for little kids, does not align with Guiding Principles



# PAT Mtg#4 Engagement: Architectural Interior Expression

**PAT Mtg #4 – INTERIOR Architectural Expression Worksheet**

Terrace Elementary School Name: \_\_\_\_\_

---

**Shape and Form:** How should interior shapes/forms relate and respond to the building design?

1 Formal — 2 — 3 Blended — 4 — 5 Informal

**Materiality:** How should material palette reflect the building materials (school identify + space function)?

1 High — 2 — 3 Blended — 4 — 5 Low

**Colors and Contrast:** Ho do the colors and contract influence the character/experience of new TCE?

1 Energetic — 2 — 3 Engaging — 4 — 5 Focused

PAT Member Responses:

11 People at PAT Mtg 4

✓ = Consensus

## PAT Feedback: Individual Completion of Architectural Expression Worksheet

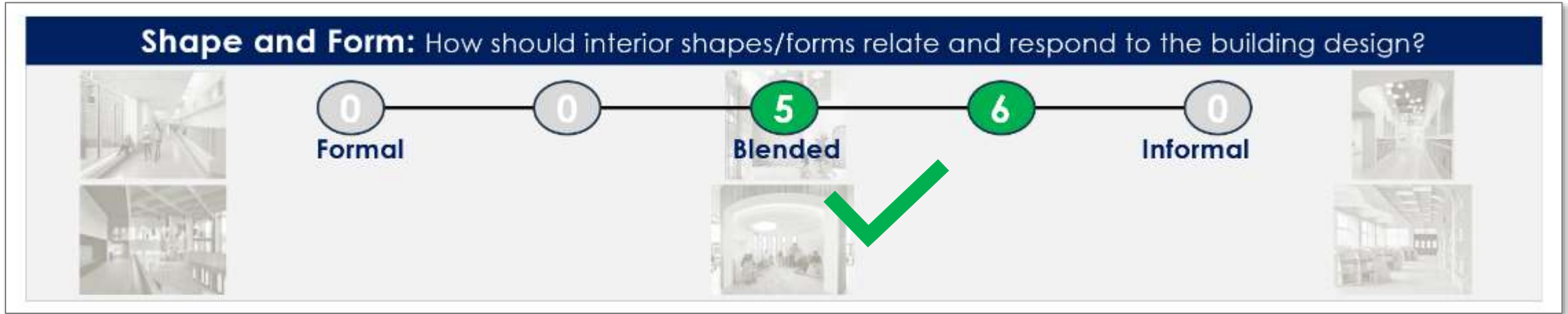
Think about where you are along the reference scale between the left/right images.

Make notes of what elements you think could apply to the new design.



## Interior

PAT Member Responses:  
11 People at PAT Mtg 4



### PAT Comments

- Include points of interest: Flex areas support independent learning
- Should have clean lines, curves or round elements, to decrease boxiness
- Be engaging but not too trendy
- A little more than “Blended”... Use shapes to add variety at features/elements
- “Formal” is too Rhythmic and congruent, too much structure
- “Informal” lacks balance and may be too distracting / not stimulating



# PAT Mtg#4 Engagement: **Architectural Expression** PAT Feedback

## Interior

PAT Member Responses:  
11 People at PAT Mtg 4



### PAT Comments

- High:
  - Include at higher volume spaces... inviting, newer, modern
  
- Blended:
  - Combination of indoor/outdoor materials feels warm and inviting
  - Pops of Color in combination with natural materials
  - Like the small cubby elements
  - Definition of space but flexible
  
- Low:
  - Less inviting and feels older



# PAT Mtg#4 Engagement: **Architectural Expression** PAT Feedback

## Interior

PAT Member Responses:  
11 People at PAT Mtg 4



### PAT Comments

- Energetic:
  - Good for Gym / Art / Dining / Specials
- Engaging:
  - Good for Media Center / Science / Music / Dining / Lower grade Classrooms / Admin
  - Use earth tones / natural colors wherever possible, pops of color but not too bright (green, blue, grey)
  - Allow outdoors to shine
- Focused:
  - Good for upper grade Classrooms, muted color tones

# Item

# 4

## **PAT MEETING #5** Preliminary Exterior Views PAT Engagement





# PAT Mtg#5: Design Progress | Preliminary Exterior Views

**PAT Mtg #4 – EXTERIOR Architectural Expression Worksheet**

Terrace Elementary School Name: \_\_\_\_\_

**Context:** How should surrounding context inform the TCE Architectural Expression?

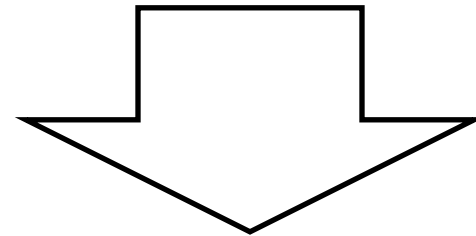
1 Fits In ✓ 2 3 4 5 Stands Out

**School Identity:** What does the building communicate about anticipated experience?

1 Formal 2 3 4 ✓ 5 Informal

**Guiding Principles:** How should front entry communicate a welcoming/inviting facility?

1 Building Element 2 3 4 Outdoor Element 5 ✓



## PAT Activity #1

### Exterior Architectural Expression

Overall Direction in alignment with Guiding Principles



# PAT Mtg#5: Design Progress | Preliminary Exterior Views

**Aerial View** Southeast corner



TERRACE ELEMENTARY SCHOOL



# PAT Mtg#5: Design Progress | Preliminary Exterior Views

**Aerial View** Northeast corner

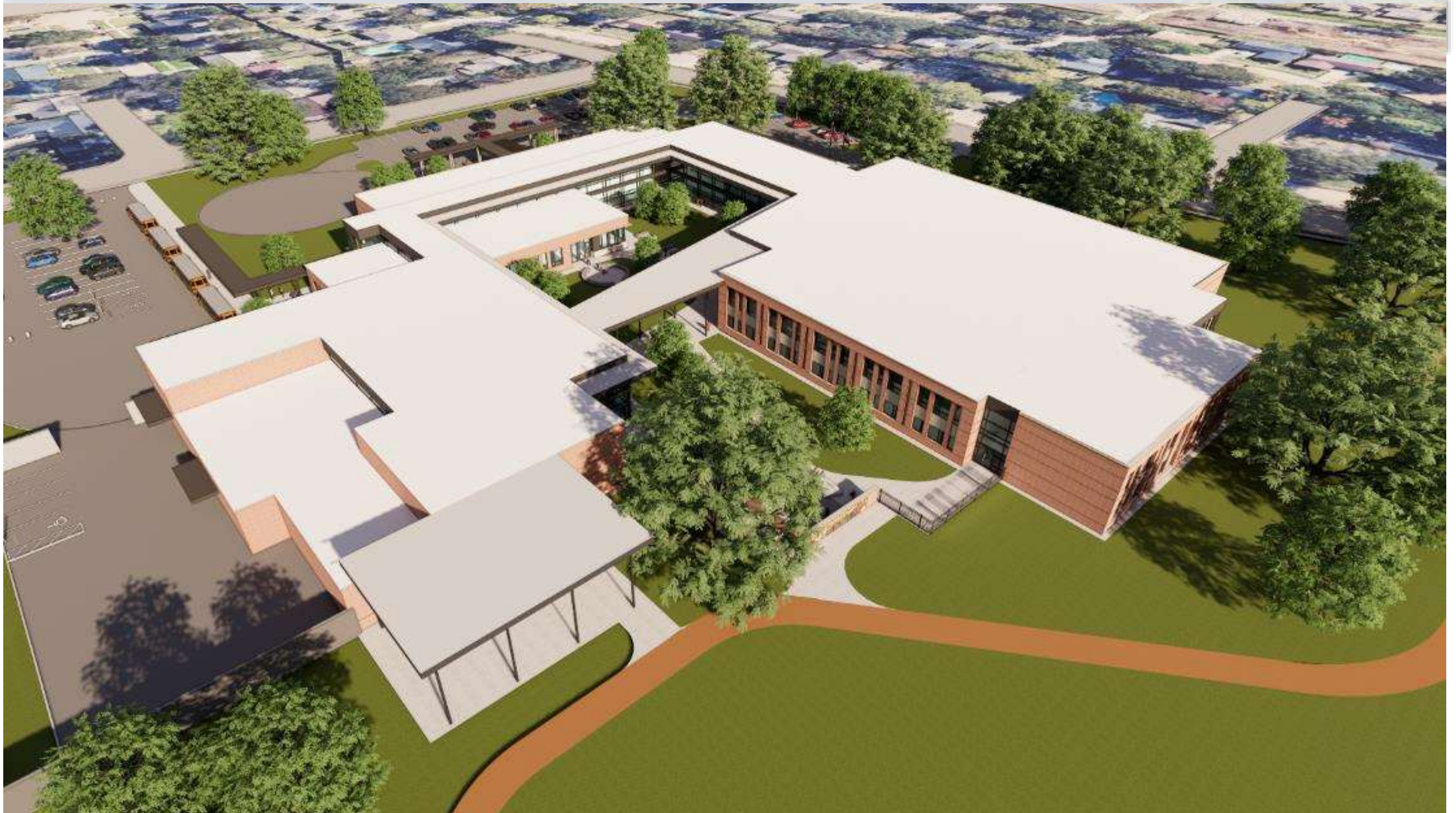


TERRACE ELEMENTARY SCHOOL



# PAT Mtg#5: Design Progress | Preliminary Exterior Views

TERRACE ELEMENTARY SCHOOL





# PAT Mtg#5: Design Progress | Preliminary Exterior Views

**Aerial View** Southwest corner



TERRACE ELEMENTARY SCHOOL



# PAT Mtg#5: Design Progress | Preliminary Exterior Views

**Main Entry** Fits-in / Informal / Outdoor Element



TERRACE ELEMENTARY SCHOOL



# PAT Mtg#5: Design Progress | Preliminary Exterior Views

**Main Entry** Fits-in / Informal / Outdoor Element



TERRACE ELEMENTARY SCHOOL



# PAT Mtg#5: Design Progress | Preliminary Exterior Views

**Main Entry** Fits-in / Informal / Outdoor Element



TERRACE ELEMENTARY SCHOOL



# PAT Mtg#5: Design Progress | Preliminary Exterior Views

## Students Entry Fits-in / Informal / Outdoor Element



TERRACE ELEMENTARY SCHOOL



# PAT Mtg#5: Design Progress | Preliminary Exterior Views

## Bus Drop-Off Entry Fits-in / Informal / Outdoor Element



TERRACE ELEMENTARY SCHOOL



# PAT Mtg#5: Design Progress | Preliminary Exterior Views

**Courtyard** Fits-in / Informal / Outdoor Element



TERRACE ELEMENTARY SCHOOL



# PAT Mtg#5: Design Progress | Preliminary Exterior Views

## Outdoor Learning Fits-in / Informal / Outdoor Element



TERRACE ELEMENTARY SCHOOL



Name: \_\_\_\_\_

### Does the Exterior Architectural Expression Respond to the TCE Guiding Principles?



#### TERRACE ELEMENTARY SCHOOL DESIGN - GUIDING PRINCIPLES

A welcoming and inviting facility for our students, staff and parents.

An inviting place where the community is proud to gather and send their children to school.

A learning environment with connections to the outdoors.

A place with opportunities for our students and staff to connect visually and physically to the outdoor environment.

An engaging learning environment where students are excited to collaborate and learn.

A variety of flexible spaces that are accessible and inclusive for all students and staff.

A campus reflecting our diversity and engaging to the community.

A place to celebrate the diverse and growing community.

**PAT Comments:** What are you most excited about regarding the Exterior Expression design progress?

---

---

---

---

---

---

---

# Item 5

## PAT MEETING #5 Preliminary Interior Views PAT Engagement





# PAT Mtg#5: Design Progress | Preliminary Interior Views

**PAT Mtg #4 – INTERIOR Architectural Expression Worksheet**

Terrace Elementary School Name: \_\_\_\_\_

**Shape and Form:** How should interior shapes/forms relate and respond to the building design?

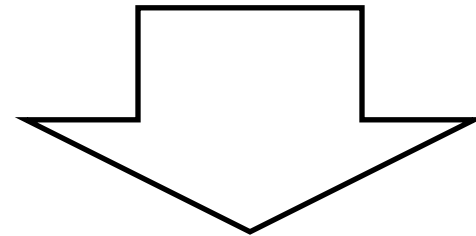
1 Formal 2 3 Blended 4 5 Informal

**Materiality:** How should material palette reflect the building materials (school identity + space function)?

1 High 2 3 Blended 4 5 Low

**Colors and Contrast:** How do the colors and contrast influence the character/experience of new TCEP?

1 Energetic 2 3 Engaging 4 5 Focused



## PAT Activity #2

### Interior Architectural Expression

Overall Direction in alignment with Guiding Principles



# PAT Mtg#5: Preliminary Interior View | Entry

TERRACE ELEMENTARY SCHOOL



Entry



# PAT Mtg#5: Preliminary Interior View | Media Center

TERRACE ELEMENTARY SCHOOL



 Media Center



# PAT Mtg#5: Preliminary Interior View | Collaboration Area

TERRACE ELEMENTARY SCHOOL



 Collaboration Area



# PAT Mtg#5: Preliminary Interior View | Dining

TERRACE ELEMENTARY SCHOOL



Dining



Name: \_\_\_\_\_

### What Interior Architectural Expression Elements Appeal to the PAT?



A



B



C



D

**PAT Comments:** What are you most excited about regarding the Interior Expression design progress?

---



---



---



---



---



---



---

Item

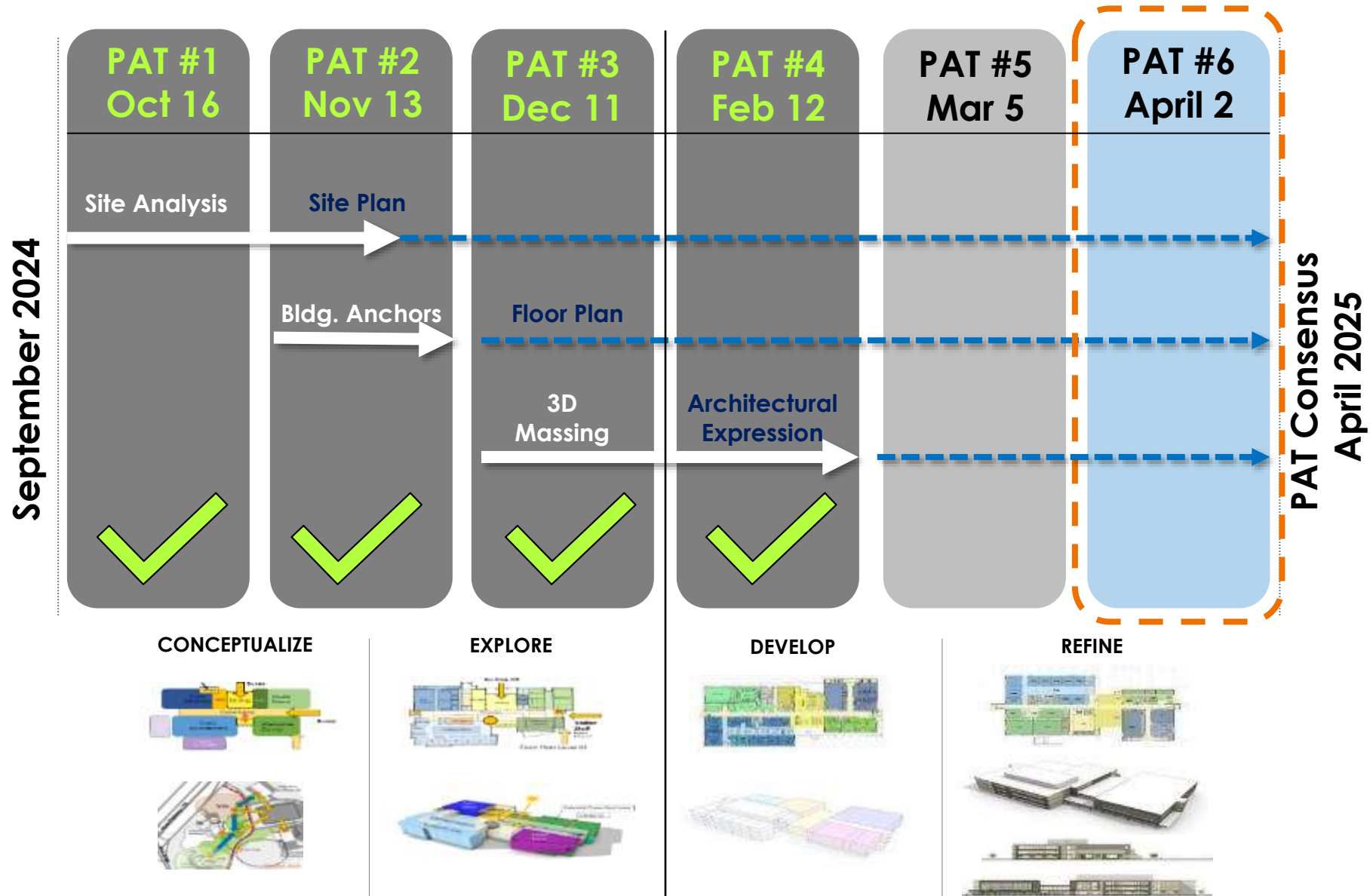
6

**NEXT STEPS**





# PAT Engagement – Overview





# PAT Meeting #5 – What’s Happening Next?

TERRACE ELEMENTARY SCHOOL




## SEEK PAT CONSENSUS on Design Development

**PAT Mtg#5 Engagement:** Exterior Design Progress - Name: \_\_\_\_\_

**PAT Poll**  
Provide YOUR Individual Input

**Does the Exterior Architectural Expression Respond to the TCE Design Principles?**



**TERRACE ELEMENTARY SCHOOL DESIGN – GUIDING PRINCIPLES**

- A safe, secure and accessible facility for our students, staff and parents
- A healthy, green building that promotes physical, social and emotional well-being
- A learning environment with connections to the outdoors
- Supporting our students to be active and healthy, responsible, and engaged citizens
- An engaging learning environment where students are excited to attend school and learn
- A well-planned, multi-functional school building that is a true community center
- A campus reflecting our diversity and engaging to the community

**PAT Comments:** What are you most excited about regarding the Exterior Expression design progress?

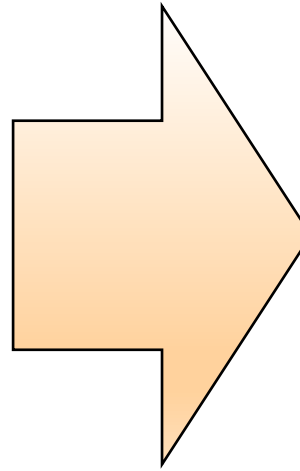
---

---

---

---

---



**PAT Mtg#5 Engagement:** Interior Design Progress - Name: \_\_\_\_\_

**PAT Poll**  
Provide YOUR Individual Input

**What Interior Architectural Expression Elements Appeal to the PAT?**

  
**A**

  
**B**

  
**C**

  
**D**

**PAT Comments:** What are you most excited about regarding the Interior Expression design progress?

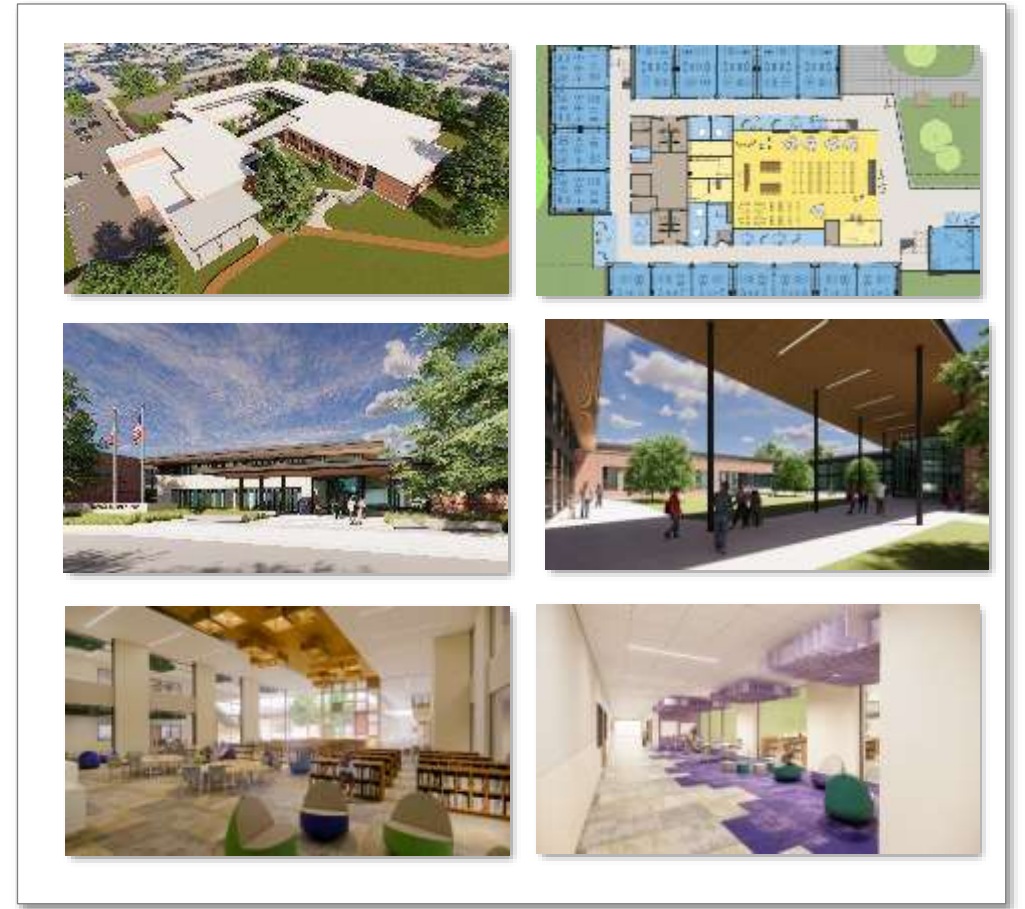
---

---

---

---

---





**See you at PAT Mtg #6**

**April 2, 2025  
3:00 PM**

Terrace  
Elementary School

**THANK YOU!**