

LEA Name : Unionville-Chadds Ford SD
Address : 740 Unionville Road
Kennett Square , PA 19348

County : Chester
AUN Number : 124158503
LEA Type : SD

Annual Financial Report Accuracy Certification Statement

For Fiscal Year Ending
6/30/2024

Pennsylvania Department of Education
&
Office of Comptroller Operations

PDE-2056: Intermediate Unit
PDE-2057: School District, AVTS/CTC, Charter School,
and Special Program Jointure

CERTIFICATION: By signing this page I agree that the electronic data submitted is a complete and accurate statement of the financial operations and status of the local education agency for the fiscal year. It has been prepared in accordance with generally accepted accounting principles and established Commonwealth of PA reporting guidelines.



Chief School Administrator Signature

11/25/2024

Date



Board Secretary Signature

11/25/2024

Date

Joseph Deady

Contact Person

jdeady@ucfsd.net

Contact Person E-mail Address

(610)347-0970 Ext :3319

Contact Person Telephone Number

(610)347-0976

Contact Person Fax Number

Audit Certification
Annual Financial Report:
For Fiscal Year Ending **6/30/2024**
(Pursuant to PA School Code Section 218(b))

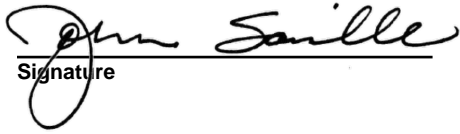
LEA Name : Unionville-Chadds Ford SD
AUN Number : 124158503
County : Chester

Audit Certification Due: 12/31/2024

This certification is applicable to the Annual Financial Report data submitted through the Consolidated Financial Reporting System (CFRS).

CERTIFICATION: By signing this page I agree that the financial statements of the school have been properly audited as noted above pursuant to Article XXIV, and in the auditor's professional opinion, the Annual Financial Report (PDE-2057) submitted through CFRS is materially consistent with the audited financial statements.

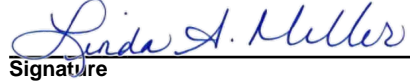
Chief School Administrator



Signature

11/25/2024
Date

Board Secretary



Signature

11/25/2024
Date

Joseph Deady
Contact Person

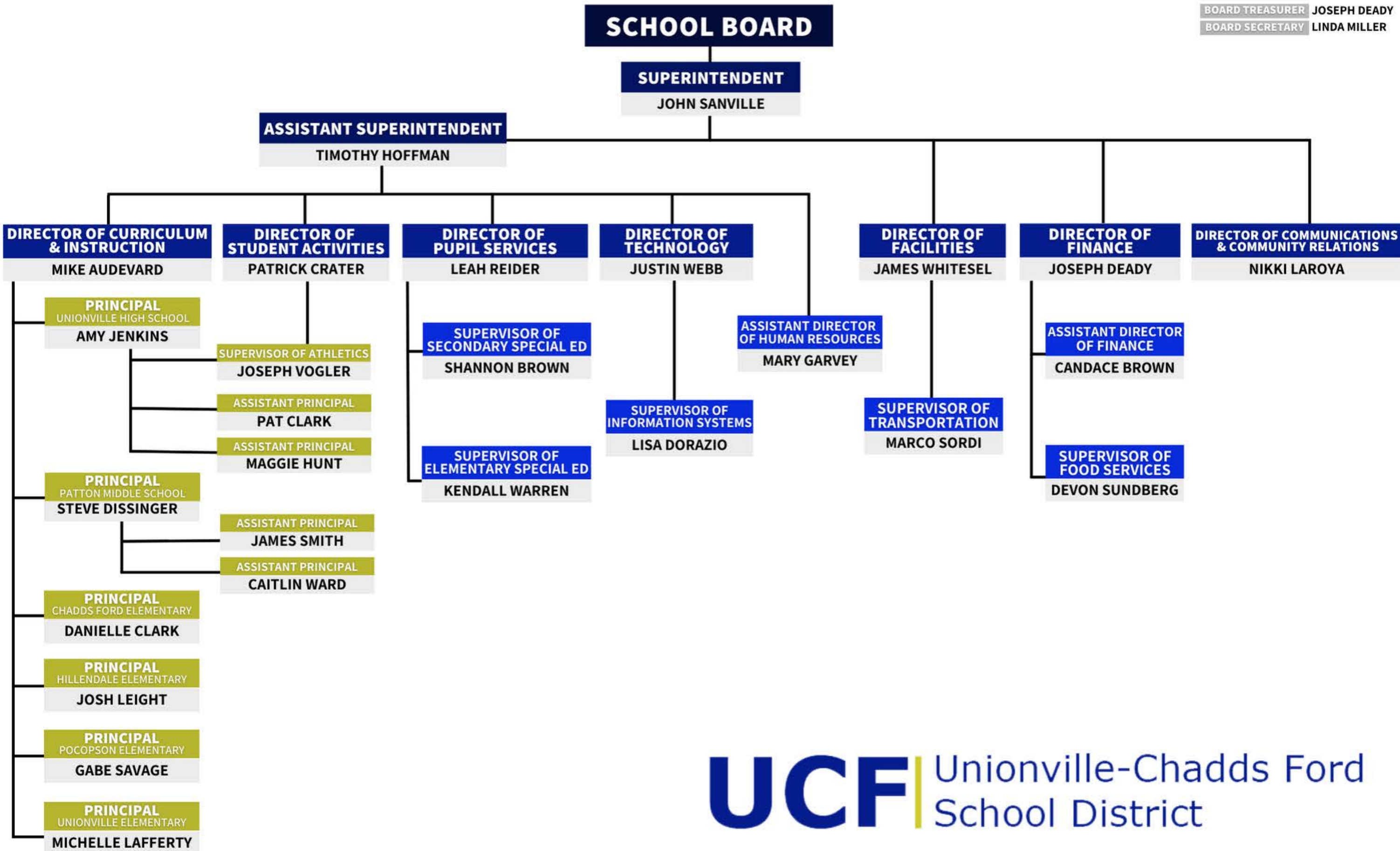
jdeady@ucfsd.net
Contact Person E-mail Address

(610)347-0970 Ext :3319
Contact Person Telephone Number

(610)347-0976
Contact Person Fax Number

ORGANIZATIONAL CHART OF UNIONVILLE-CHADDS FORD SCHOOL DISTRICT

BOARD TREASURER JOSEPH DEADY
BOARD SECRETARY LINDA MILLER





Book	Policy Manual
Section	600 Finances
Title	GASB Statement 34
Code	622
Status	Active
Adopted	January 20, 2015
Last Revised	March 20, 2023

Purpose

The Board recognizes the need to implement the required accounting and financial reporting standards stipulated by the Pennsylvania Department of Education.

The primary objectives of implementing the Governmental Accounting Standards Board (GASB) Statement 34 are to assure compliance with state requirements, and properly account for both the financial and economic resources of the district.

Authority

Participation of the school district in any such activity shall be in accordance with Board policy. [\[1\]](#)[\[2\]](#)

Delegation of Responsibility

The responsibility to coordinate the compilation and preparation of all information necessary to implement this policy is delegated to the Director of Finance.

The designated individual shall be responsible for implementing the necessary procedures to establish and maintain a fixed asset inventory, including depreciation schedules. Depreciation shall be computed on a straight-line basis over the useful lives of the assets, using an averaging convention. Normal maintenance and repairs shall be charged to expense as incurred; major renewals and betterments that materially extend the life or increase the value of the asset shall be capitalized. A schedule of accumulated depreciation shall be consistent from year to year. The basis for depreciation, including groups of assets and useful lives, shall be in writing and submitted for review to the Board.

The Director of Finance shall prepare the required Management Discussion and Analysis (MD&A). The MD&A shall be in the form required by GASB Statement 34 and shall be submitted to the Board for approval, prior to publication.

Prior to submission of the MD&A for Board approval, the district's independent auditors shall review the MD&A, in accordance with SAS No. 52, 'Required Supplementary Information'.

Legal

[1. 24 P.S. 218](#)

[2. 24 P.S. 613](#)

Governmental Accounting Standards Board, Statement No. 34

<u>Val Number</u>	<u>Description</u>	<u>Justification</u>
30116	Revenue Detail: A large amount has been reported as Earnings on Investments in Fund 32, account 6500, which should only include interest and/or dividend earnings. Correct or provide a brief explanation of the revenue reported. Revenue Detail 6500, Fund 32: \$35,958.34	This is correct that it is only interest/dividend earnings.
30410	Revenue Detail: AFR amount must equal or exceed PDE FAI System amount. 6944, AFR Rev Detail: \$86,944.38 6944, PDE FAI System: \$94,247.00	Revenue was received that was accrued to prior year.
42330	Expenditure Detail: AFR amount must equal or exceed PDE FAI System amount. 1000-562, AFR Exp Detail: \$698,034.32 1000-562, PDE FAI System: \$706,345.44	We received two refund checks.
42370	Expenditure Detail: AFR amount must equal or exceed PDE FAI System amount. 1441-561, AFR Exp Detail: \$65,124.33 1441-561, PDE FAI System: \$102,904.92	Revenue was received that was accrued to prior year.
42420	Expenditure Detail: Total current year 2700-513 expenditure varies from prior year by 10%. Correct the data or enter a justification. 2700-513, AFR Exp Detail: \$5,163.71 2700-513, PY AFR Amount: \$0.00	Not enough staff to cover bus runs so we had to contract out.
50160	SOIN: All Governmental Fund General Obligation Bonds must include an amount for Interest Paid during Fiscal Year. Correct data or enter a justification.	Debt that was issued on 4/2024 doesn't have its first interest payment until December 2024.

Amounts Expressed in Whole Dollars

	<u>General Fund</u> <u>(10)</u>	<u>Student Sponsored</u> <u>Activity Fund</u> <u>(21)</u>	<u>Public Purpose Trust</u> <u>(27)</u>	<u>Other Compt Approved</u> <u>(28)</u>	<u>Athletic / Activity</u> <u>(29)</u>
Assets And Deferred Outflows Of Resources					
Assets					
0100 Cash and Cash Equivalents	9,853,572				
0110 Investments	4,449,000				
0120 Taxes Receivable	1,077,769				
0130 Due From Other Funds	1,488,998				
0141 Due From Other Governments	5,181,763				
0142 State Revenue Receivable					
0143 Federal Revenue Receivable					
0145 Other Intergovernmental Revenue Receivable					
0146 Due from Primary Government					
0147 Due from Component Unit					
0150 Other Receivables	188,878				
0170 Inventories					
0180 Prepaid Expenses (Expenditures)	78,965				
0190 Other Current Assets					
Total Assets	\$22,318,945				
0910 Deferred Outflows of Resources					
Total Assets And Deferred Outflows Of Resources	\$22,318,945				

Amounts Expressed in Whole Dollars

<u>Capital Reserve (690.</u>	<u>Capital Reserve (1431)</u>	<u>Other Capital Projects</u>	<u>Debt Service</u>	<u>Permanent</u>
<u>1850)</u>	<u>(32)</u>	<u>Fund</u>	<u>(40)</u>	<u>(90)</u>
<u>(31)</u>		<u>(39)</u>		

Assets And Deferred Outflows Of Resources

Assets

0100	Cash and Cash Equivalents	706,546	17,637,533	
0110	Investments			
0120	Taxes Receivable			
0130	Due From Other Funds			
0141	Due From Other Governments			
0142	State Revenue Receivable			
0143	Federal Revenue Receivable			
0145	Other Intergovernmental Revenue Receivable			
0146	Due from Primary Government			
0147	Due from Component Unit			
0150	Other Receivables			
0170	Inventories			
0180	Prepaid Expenses (Expenditures)			
0190	Other Current Assets			
Total Assets		\$706,546	\$17,637,533	
0910	Deferred Outflows of Resources			
Total Assets And Deferred Outflows Of Resources		\$706,546	\$17,637,533	

Amounts Expressed in Whole Dollars

Total Governmental Funds

Assets And Deferred Outflows Of Resources

Assets	
0100 Cash and Cash Equivalents	28,197,651
0110 Investments	4,449,000
0120 Taxes Receivable	1,077,769
0130 Due From Other Funds	1,488,998
0141 Due From Other Governments	5,181,763
0142 State Revenue Receivable	
0143 Federal Revenue Receivable	
0145 Other Intergovernmental Revenue Receivable	
0146 Due from Primary Government	
0147 Due from Component Unit	
0150 Other Receivables	188,878
0170 Inventories	
0180 Prepaid Expenses (Expenditures)	78,965
0190 Other Current Assets	
Total Assets	\$40,663,024
0910 Deferred Outflows of Resources	
Total Assets And Deferred Outflows Of Resources	\$40,663,024

Amounts Expressed in Whole Dollars

	<u>General Fund</u> <u>(10)</u>	<u>Student Sponsored</u> <u>Activity Fund</u> <u>(21)</u>	<u>Public Purpose Trust</u> <u>(27)</u>	<u>Other Compt Approved</u> <u>(28)</u>	<u>Athletic / Activity</u> <u>(29)</u>
Liabilities And Deferred Inflows Of Resources And Fund Balances					
Liabilities					
0400 Due to Other Funds					
0411 Due to Other Governments					
0412 Due to Primary Government					
0413 Due to Component Unit					
0420 Accounts Payable	1,774,472				
0430 Contracts Payable					
0440 Current Portion of Long-Term Debt					
0450 Short-Term Payables					
0461 Accrued Salaries and Benefits	12,899,487				
0462 Payroll Deductions and Withholding					
0480 Unearned Revenues	737,279				
0490 Other Current Liabilities	2,114				
Total Liabilities	\$15,413,352				
0950 Deferred Inflows of Resources					
Fund Balances					
0810 Nonspendable Fund Balance	78,965				
0820 Restricted Fund Balance					
0830 Committed Fund Balance	2,971,787				
0840 Assigned Fund Balance					
0850 Unassigned Fund Balance	3,854,841				
Total Fund Balances	\$6,905,593				
Total Liabilities, Deferred Inflows Of Resources And Fund Balances	\$22,318,945				

Amounts Expressed in Whole Dollars

<u>Capital Reserve (690.</u>	<u>Capital Reserve (1431)</u>	<u>Other Capital Projects</u>	<u>Debt Service</u>	<u>Permanent</u>
<u>1850)</u>	<u>(32)</u>	<u>Fund</u>	<u>(40)</u>	<u>(90)</u>
<u>(31)</u>		<u>(39)</u>		

Liabilities And Deferred Inflows Of Resources And Fund Balances

Liabilities				
0400 Due to Other Funds			4,423	
0411 Due to Other Governments				
0412 Due to Primary Government				
0413 Due to Component Unit				
0420 Accounts Payable			2,016,852	
0430 Contracts Payable				
0440 Current Portion of Long-Term Debt				
0450 Short-Term Payables				
0461 Accrued Salaries and Benefits				
0462 Payroll Deductions and Withholding				
0480 Unearned Revenues				
0490 Other Current Liabilities				
Total Liabilities			\$2,021,275	
Fund Balances				
0810 Nonspendable Fund Balance				
0820 Restricted Fund Balance		706,546	15,616,258	
0830 Committed Fund Balance				
0840 Assigned Fund Balance				
0850 Unassigned Fund Balance				
Total Fund Balances		\$706,546	\$15,616,258	
Total Liabilities, Deferred Inflows Of Resources And Fund Balances		\$706,546	\$17,637,533	

Amounts Expressed in Whole Dollars

Total Governmental Funds

Liabilities And Deferred Inflows Of Resources And Fund Balances

Liabilities

0400 Due to Other Funds	4,423
0411 Due to Other Governments	
0412 Due to Primary Government	
0413 Due to Component Unit	
0420 Accounts Payable	3,791,324
0430 Contracts Payable	
0440 Current Portion of Long-Term Debt	
0450 Short-Term Payables	
0461 Accrued Salaries and Benefits	12,899,487
0462 Payroll Deductions and Withholding	
0480 Unearned Revenues	737,279
0490 Other Current Liabilities	2,114

Total Liabilities \$17,434,627

0950 Deferred Inflows of Resources

Fund Balances

0810 Nonspendable Fund Balance	78,965
0820 Restricted Fund Balance	16,322,804
0830 Committed Fund Balance	2,971,787
0840 Assigned Fund Balance	
0850 Unassigned Fund Balance	3,854,841

Total Fund Balances \$23,228,397

Total Liabilities, Deferred Inflows Of Resources And Fund Balances \$40,663,024

Amounts Expressed in Whole Dollars	<u>General Fund</u> <u>(10)</u>	<u>Student Sponsored</u> <u>Activity Fund</u> <u>(21)</u>	<u>Public Purpose Trust</u> <u>(27)</u>	<u>Other Compt Approved</u> <u>(28)</u>	<u>Athletic / Activity</u> <u>(29)</u>
Revenues					
6000 Revenue from Local Sources	82,147,075				
7000 Revenue from State Sources	18,863,806				
8000 Revenue from Federal Sources	1,229,279				
Total Revenues	\$102,240,160				
Expenditures					
1000 Instruction	60,447,760				
2000 Support Services	31,319,341				
3000 Operation of Non-Instructional Services	2,273,413				
4000 Facilities Acquisition, Construction and Improvement Services					
5110 Debt Service	9,302,125				
5130 Refund of Prior Year Revenues / Receipts					
5140 Leases and Other Right-to-Use Arrangements	160,708				
Total Expenditures	\$103,503,347				
Excess (Deficiency) Of Revenues Over Expenditures	(\$1,263,187)				
Other Financing Sources (Uses)					
9110 Face Value of Bonds Issued					
9120 Proceeds from Refunding of Bonds					
9130 Bond Premiums					
9200 Proceeds from Extended Term Financing, Leases, and Other Right-to-Use Arrangements	431,879				
9300 Interfund Transfers - IN					
9400 Sale of or Compensation for Loss of Fixed Assets	68,183				
9710 Transfers from Component Units					
9720 Transfers from Primary Governments					
9910 Other Financing Sources Not Listed in the 9000 Series					
9990 Insurance Recoveries					
5120 Debt Service – Refunded Bonds					
5150 Bond Discounts					
5200 Interfund Transfers – Out					
5300 Transfers Out to Component Units/Primary Governments					
Total Other Financing Sources (Uses)	\$500,062				

Amounts Expressed in Whole Dollars	<u>Capital Reserve (690.1850)</u> <u>(31)</u>	<u>Capital Reserve (1431)</u> <u>(32)</u>	<u>Other Capital Projects</u> <u>Fund</u> <u>(39)</u>	<u>Debt Service</u> <u>(40)</u>	<u>Permanent</u> <u>(90)</u>
Revenues					
6000 Revenue from Local Sources		35,958	373,483		
7000 Revenue from State Sources					
8000 Revenue from Federal Sources					
Total Revenues		\$35,958	\$373,483		
Expenditures					
1000 Instruction					
2000 Support Services			475,805		
3000 Operation of Non-Instructional Services					
4000 Facilities Acquisition, Construction and Improvement Services		(4,200)	6,141,572		
5110 Debt Service					
5130 Refund of Prior Year Revenues / Receipts					
5140 Leases and Other Right-to-Use Arrangements					
Total Expenditures		(\$4,200)	\$6,617,377		
Excess (Deficiency) Of Revenues Over Expenditures		\$40,158	(\$6,243,894)		
Other Financing Sources (Uses)					
9110 Face Value of Bonds Issued			12,790,000		
9120 Proceeds from Refunding of Bonds					
9130 Bond Premiums			1,421,344		
9200 Proceeds from Extended Term Financing, Leases, and Other Right-to-Use Arrangements					
9300 Interfund Transfers - IN					
9400 Sale of or Compensation for Loss of Fixed Assets					
9710 Transfers from Component Units					
9720 Transfers from Primary Governments					
9910 Other Financing Sources Not Listed in the 9000 Series					
9990 Insurance Recoveries					
5120 Debt Service – Refunded Bonds					
5150 Bond Discounts					
5200 Interfund Transfers – Out					
5300 Transfers Out to Component Units/Primary Governments					
Total Other Financing Sources (Uses)			\$14,211,344		

Amounts Expressed in Whole Dollars	<u>Total Governmental Funds</u>
Revenues	
6000 Revenue from Local Sources	82,556,516
7000 Revenue from State Sources	18,863,806
8000 Revenue from Federal Sources	1,229,279
Total Revenues	\$102,649,601
Expenditures	
1000 Instruction	60,447,760
2000 Support Services	31,795,146
3000 Operation of Non-Instructional Services	2,273,413
4000 Facilities Acquisition, Construction and Improvement Services	6,137,372
5110 Debt Service	9,302,125
5130 Refund of Prior Year Revenues / Receipts	
5140 Leases and Other Right-to-Use Arrangements	160,708
Total Expenditures	\$110,116,524
Excess (Deficiency) Of Revenues Over Expenditures	(\$7,466,923)
Other Financing Sources (Uses)	
9110 Face Value of Bonds Issued	12,790,000
9120 Proceeds from Refunding of Bonds	
9130 Bond Premiums	1,421,344
9200 Proceeds from Extended Term Financing, Leases, and Other Right-to-Use Arrangements	431,879
9300 Interfund Transfers - IN	
9400 Sale of or Compensation for Loss of Fixed Assets	68,183
9710 Transfers from Component Units	
9720 Transfers from Primary Governments	
9910 Other Financing Sources Not Listed in the 9000 Series	
9990 Insurance Recoveries	
5120 Debt Service – Refunded Bonds	
5150 Bond Discounts	
5200 Interfund Transfers – Out	
5300 Transfers Out to Component Units/Primary Governments	
Total Other Financing Sources (Uses)	\$14,711,406

Amounts Expressed in Whole Dollars	<u>General Fund</u> <u>(10)</u>	<u>Student Sponsored</u> <u>Activity Fund</u> <u>(21)</u>	<u>Public Purpose Trust</u> <u>(27)</u>	<u>Other Compt Approved</u> <u>(28)</u>	<u>Athletic / Activity</u> <u>(29)</u>
Special And Extraordinary Items					
9920 Special Items – Gains					
9930 Extraordinary Items – Gains					
5520 Special Items – Losses					
5530 Extraordinary Items – Losses					
Net Change In Fund Balances	(\$763,125)				
Fund Balance					
0001 Fund Balance - Beginning of Fiscal Year	7,668,718				
Fund Balance - End Of Year	\$6,905,593				

Amounts Expressed in Whole Dollars	<u>Capital Reserve (690.</u> <u>1850)</u> <u>(31)</u>	<u>Capital Reserve (1431)</u> <u>(32)</u>	<u>Other Capital Projects</u> <u>Fund</u> <u>(39)</u>	<u>Debt Service</u> <u>(40)</u>	<u>Permanent</u> <u>(90)</u>
Special And Extraordinary Items					
9920 Special Items – Gains					
9930 Extraordinary Items – Gains					
5520 Special Items – Losses					
5530 Extraordinary Items – Losses					
Net Change In Fund Balances		\$40,158	\$7,967,450		
Fund Balance					
0001 Fund Balance - Beginning of Fiscal Year		666,388	7,648,808		
Fund Balance - End Of Year		\$706,546	\$15,616,258		

Amounts Expressed in Whole Dollars	<u>Total Governmental Funds</u>
Special And Extraordinary Items	
9920 Special Items – Gains	
9930 Extraordinary Items – Gains	
5520 Special Items – Losses	
5530 Extraordinary Items – Losses	
Net Change In Fund Balances	\$7,244,483
Fund Balance	
0001 Fund Balance - Beginning of Fiscal Year	15,983,914
Fund Balance - End Of Year	\$23,228,397

Amounts Expressed in Whole Dollars	<u>Food Service</u> <u>(51)</u>	<u>Child Care</u> <u>Operations</u> <u>(52)</u>	<u>Other Enterprise</u> <u>(58)</u>	<u>TOTAL</u>	<u>Internal Service</u> <u>(60)</u>
Assets And Deferred Outflows Of Resources					
Current Assets					
0100 Cash and Cash Equivalents	1,398,023			1,398,023	3,319,528
0110 Investments					
0130 Due From Other Funds					
0141 Due From Other Governments	44,982			44,982	
0142 State Revenue Receivable					
0143 Federal Revenue Receivable					
0146 Due from Primary Government					
0147 Due from Component Unit					
0150 Other Receivables					
0170 Inventories	24,091			24,091	
0180 Prepaid Expenses (Expenditures)					
0190 Other Current Assets					211,128
Total Current Assets	\$1,467,096			\$1,467,096	\$3,530,656
Noncurrent Assets					
0211 Land					
0212 Site Improvements (Net)					
0220 Buildings and Building Improvements (Net)					
0230 Tangible Property and Intangible Right-To-Use Assets (Net)					
0250 Construction in Progress					
0260 Long Term Prepayments					
0290 Other Noncurrent Assets	127,794			127,794	
Total Noncurrent Assets	\$127,794			\$127,794	
0910 Deferred Outflows of Resources	298,058			298,058	
Total Assets And Deferred Outflows Of Resources	\$1,892,948			\$1,892,948	\$3,530,656

Amounts Expressed in Whole Dollars	<u>Food Service</u> <u>(51)</u>	<u>Child Care</u> <u>Operations</u> <u>(52)</u>	<u>Other Enterprise</u> <u>(58)</u>	<u>TOTAL</u>	<u>Internal Service</u> <u>(60)</u>
Liabilities And Deferred Inflows Of Resources And Net Position					
Current Liabilities					
0400 Due to Other Funds	883,859			883,859	600,716
0411 Due to Other Governments					
0413 Due to Component Unit					
0420 Accounts Payable					
0430 Contracts Payable					
0440 Current Portion of Long-Term Debt					
0450 Short-Term Payables					
0461 Accrued Salaries and Benefits					899,284
0462 Payroll Deductions and Withholding					
0480 Unearned Revenues	81,361			81,361	
0490 Other Current Liabilities					
Total Current Liabilities	\$965,220			\$965,220	\$1,500,000
Noncurrent Liabilities					
0510 Bonds Payable					
0520 Extended-Term Financing Agreements Payable					
0530 Lease and Other Right-To-Use Obligations					
0540 Accumulated Compensated Absences					
0550 Authority Lease Obligations					
0560 Other Post-Employment Benefits (OPEB)	107,915			107,915	
0570 Net Pension Liability	1,722,192			1,722,192	
0599 Other Noncurrent Liabilities					
Total Noncurrent Liabilities	\$1,830,107			\$1,830,107	
Total Liabilities	\$2,795,327			\$2,795,327	\$1,500,000
0950 Deferred Inflows of Resources	77,746			77,746	
Net Position					
0791 Net Investment in Capital Assets	127,794			127,794	
0008 Restricted Net Position (0792 – 0798)					
0799 Unrestricted Net Position	(1,107,919)			(1,107,919)	2,030,656
Total Net Position	(\$980,125)			(\$980,125)	\$2,030,656
Total Liabilities And Deferred Inflows Of Resources And Net Position	\$1,892,948			\$1,892,948	\$3,530,656

Amounts Expressed in Whole Dollars	<u>Food Service</u> <u>(51)</u>	<u>Child Care Operations</u> <u>(52)</u>	<u>Other Enterprise</u> <u>(58)</u>	<u>TOTAL</u>	<u>Internal Service</u> <u>(60)</u>
Operating Revenues					
6600 Food Service Revenue	1,589,822			1,589,822	
0071 Charges for Services					9,874,926
0072 Other Operating Revenue					
Total Operating Revenues	\$1,589,822			\$1,589,822	\$9,874,926
Operating Expenses					
100 Personnel Services – Salaries	622,931			622,931	
200 Personnel Services – Employee Benefits	469,079			469,079	9,867,021
300 Purchased Professional and Technical Services					7,905
400 Purchased Property Services					
500 Other Purchased Services					
600 Supplies	1,115,927			1,115,927	
740 Depreciation	37,286			37,286	
770 Amortization Expense					
810 Dues and Fees					
880 Refunds of Prior Years' Receipts					
890 Miscellaneous Expenditures					
Total Operating Expenses	\$2,245,223			\$2,245,223	\$9,874,926
Operating Income (Loss)	(\$655,401)			(\$655,401)	\$0
Non Operating Revenues (Expenses)					
6500 Earnings on Investments	36,856			36,856	166,441
6830 Federal Revenue from Intermediary Sources					
6920 Contributions and Donations from Private Sources					
6930 Gains or Losses on Sale of Fixed Assets					
6991 Refunds of a Prior Year Expenditure					
7000 Revenue from State Sources	243,107			243,107	
8000 Revenue from Federal Sources	428,203			428,203	
9990 Insurance Recoveries					
820 Claims and Judgments Against the LEA					
830 Interest					
TOTAL Non Operating Revenues (Expenses)	\$708,166			\$708,166	\$166,441
Income (Loss) Before Contributions And Transfers	\$52,765			\$52,765	\$166,441

Amounts Expressed in Whole Dollars	<u>Food Service</u> <u>(51)</u>	<u>Child Care Operations</u> <u>(52)</u>	<u>Other Enterprise</u> <u>(58)</u>	<u>TOTAL</u>	<u>Internal Service</u> <u>(60)</u>
Contributions, Transfers, and Special and Extraordinary Items					
5200 Interfund Transfers – Out					
5300 Transfers Out to Component Units/Primary Governments					
5520 Special Items – Losses					
5530 Extraordinary Items – Losses					
9300 Interfund Transfers - IN					
9500 Capital Contributions					
9700 Transfers IN From Component Units/Primary Governments					
9920 Special Items – Gains					
9930 Extraordinary Items – Gains					
Change In Net Position	\$52,765			\$52,765	\$166,441
0002 Net Position - Beginning of Fiscal Year	(1,032,890)			(1,032,890)	1,864,215
0003 Accounting Changes / Residual Equity Transfers					
Net Position - End Of Year	(\$980,125)			(\$980,125)	\$2,030,656

Amounts Expressed in Whole Dollars	<u>Food Service</u> <u>(51)</u>	<u>Child Care Operations</u> <u>(52)</u>	<u>Other Enterprise</u> <u>(58)</u>	<u>TOTAL</u>	<u>Internal Service(60)</u>
Cash Flows From Operating Activities					
0011 Cash Receipts From Users	1,579,554			1,579,554	
0012 Cash Receipts From Assessments Made to Other Funds					9,962,221
0013 Cash Receipts From Earnings on Investments					
0014 Cash Receipts From Other Operating Revenue					
0015 Cash Payments To Employees For Services	514,262			514,262	
0016 Cash Payments For Insurance Claims					9,954,316
0017 Cash Payments To Suppliers For Goods and Services	994,457			994,457	
0018 Cash Payments For Other Operating Expenses					7,905
Net Cash Provided By (Used For) Operating Activities	\$70,835			\$70,835	\$0
Cash Flows From Non-Capital Financing Activities					
0021 Receipts From Local Sources - 6000					
0022 Receipts From State Sources - 7000	248,394			248,394	
0023 Receipts From Federal Sources -8000	316,875			316,875	
0024 Notes and Loans Received (Repaid)					
0025 Interest Paid on Notes/Loans - 5100-830					
0026 Operating Transfers In (Out)/Residual Equity Trans					
0027 Operating Transfers In (Out) Primary Government / Comp Unit					
0028 Receipts From Refund of Prior Year Expenditures - 6991					
0029 Special and Extraordinary Gains (losses)					
0030 Receipts from Insurance Recoveries -9990					
Net Cash Prov By (Used for) Non-Capital Financing Activities	\$565,269			\$565,269	
Cash Flows From Capital and Related Financing Activities					
0031 Payments For Fac Acq, Const, and Imp - 4000					
0032 Proceeds from Disposal of Capital Assets					
0033 Proceeds From Extended Term Financing - 9200					
0034 Principal Paid on Financing Agreements					
0035 Interest Paid on Financing Agreements - 5100-830					
0036 (Inc) Dec in Contributed Capital					
Net Cash Prov By (Used for) Capital and Related Financing Activities					
Cash Flows From Investing Activities					
0041 Earnings on Investments - 6500	36,856			36,856	
0042 Purchase of Inv Securities / Deposits to Inv Pools					
0043 Receipts From Investment Pool Withdrawals					166,441
0044 Proceeds from Sale and Maturity of Inv Securities					

LEA : 124158503 Unionville-Chadds Ford SD

Printed 1/6/2025 3:51:11 PM

0045 Loans Received (Paid)

Net Cash Prov By (Used for) Investing Activities	\$36,856	\$36,856	\$166,441
---	-----------------	-----------------	------------------

	<u>Food Service</u> <u>(51)</u>	<u>Child Care Operations</u> <u>(52)</u>	<u>Other Enterprise</u> <u>(58)</u>	<u>TOTAL</u>	<u>Internal Service</u> <u>(60)</u>
Net Increase (Decrease) in Cash Flows	672,960			672,960	166,441
0004 Cash and Cash Equivalents Beginning of Year	725,063			725,063	3,153,087
Cash and Cash Equivalents at Year End	\$1,398,023			\$1,398,023	\$3,319,528

Reconciliation of Operating Income (Loss) To Net Cash Provided by (Used For) Operating Activities

0005 Operating Income (Loss) per REP	(655,401)			(655,401)	
Adjustments					
0051 Depreciation and Net Amortization	37,286			37,286	
0052 Provision for Uncollectible Accounts					
0053 Other Adjustments	125,810			125,810	
Effect of Changes in Assets, Liabilities, Deferred Outflows and Deferred Inflows					
0054 (Inc) Dec In Accounts Receivable (0120-0150)					
0055 Advances to Other Funds					
0056 (Inc) Dec in Inventories (0170)	(4,340)			(4,340)	
0057 (Inc) Dec in Prepaid Expenses (0180)					
0058 (Inc) Dec in Other Current or Noncurrent Assets					
0064 Deferred Outflows (0910)	(11,130)			(11,130)	
0059 Inc (Dec) in Accounts Payable (0400-0450)					
0060 Inc (Dec) in Accrued Salaries/Benefits (0461)					(87,295)
0065 Inc (Dec) in Net Pension Liabilities (0570)	18,989			18,989	
0066 Inc (Dec) in Other Postemp Benefit Oblig (0560)	8,542			8,542	
0061 Inc (Dec) in Payroll Deductions/Withholding (0462)					
0062 Inc (Dec) in Unearned Revenue (0480)	(10,268)			(10,268)	
0063 Inc (Dec) in Other Current or Noncurrent Liabilities	575,405			575,405	87,295
0067 Deferred Inflows (0950)	(14,058)			(14,058)	
Total Adjustments	\$726,236			\$726,236	
Cash Provided By (Used for) Total	\$70,835			\$70,835	

COMBINED STATEMENT OF CASH FLOWS
SCHEDULE OF NONCASH INVESTING, CAPITAL, AND FINANCING ACTIVITIES

Explanation of Transaction and Balance Sheet Effect	Amount
Total	

LEA : 124158503 Unionville-Chadds Ford SD

Printed 1/6/2025 3:51:12 PM

Amounts Expressed in Whole Dollars	<u>Private Purpose Trust</u> <u>(71)</u>	<u>Investment Trust</u> <u>(72)</u>	<u>Pension Trust</u> <u>(73)</u>	<u>Student Activity Custodial</u> <u>(81)</u>
Assets And Deferred Outflows Of Resources				
Assets				
0100 Cash and Cash Equivalents	31,356			370,502
0110 Investments				
0130 Due From Other Funds				
0140 Due from Other Governments, Primary Government and Component Units				
0150 Other Receivables				
0170 Inventories				
0180 Prepaid Expenses (Expenditures)				
0190 Other Current Assets				
0220 Buildings and Building Improvements (Net)				
0230 Tangible Property and Intangible Right-To-Use Assets (Net)				
Total Assets	\$31,356			\$370,502
0910 Deferred Outflows of Resources				
Total Assets And Deferred Outflows Of Resources	\$31,356			\$370,502

LEA : 124158503 Unionville-Chadds Ford SD

Printed 1/6/2025 3:51:12 PM

Amounts Expressed in Whole Dollars	<u>Other Custodial</u> <u>(89)</u>	<u>Fiduciary Component Units</u> <u>(98)</u>	<u>Total Fiduciary Funds</u>
Assets And Deferred Outflows Of Resources			
Assets			
0100 Cash and Cash Equivalents			401,858
0110 Investments			
0130 Due From Other Funds			
0140 Due from Other Governments, Primary Government and Component Units			
0150 Other Receivables			
0170 Inventories			
0180 Prepaid Expenses (Expenditures)			
0190 Other Current Assets			
0220 Buildings and Building Improvements (Net)			
0230 Tangible Property and Intangible Right-To-Use Assets (Net)			
Total Assets			\$401,858
0910 Deferred Outflows of Resources			
Total Assets And Deferred Outflows Of Resources			\$401,858

LEA : 124158503 Unionville-Chadds Ford SD

Printed 1/6/2025 3:51:12 PM

Amounts Expressed in Whole Dollars

Private Purpose Trust
(71)

Investment Trust
(72)

Pension Trust
(73)

Student Activity Custodial
(81)

Liabilities, Deferred Inflows Of Resources And Net Position

Liabilities

- 0400 Due to Other Funds
- 0410 Due to Other Governments, Primary Government and Component Units
- 0420 Accounts Payable
- 0430 Contracts Payable
- 0450 Short-Term Payables
- 0460 Payroll Accruals and Withholdings
- 0480 Unearned Revenues
- 0490 Other Current Liabilities

Total Liabilities

- 0950 Deferred Inflows of Resources

Net Position

- 0791 Net Investment in Capital Assets
- 0009 Restricted Net Position (0792 – 0798) 31,356 370,502
- 0799 Unrestricted Net Position

Total Net Position **\$31,356** **\$370,502**

Total Liabilities, Deferred Inflows Of Resources And Net Position **\$31,356** **\$370,502**

LEA : 124158503 Unionville-Chadds Ford SD

Printed 1/6/2025 3:51:12 PM

Amounts Expressed in Whole Dollars	<u>Other Custodial</u> <u>(89)</u>	<u>Fiduciary Component Units</u> <u>(98)</u>	<u>Total Fiduciary Funds</u>
Liabilities, Deferred Inflows Of Resources And Net Position			
Liabilities			
0400 Due to Other Funds			
0410 Due to Other Governments, Primary Government and Component Units			
0420 Accounts Payable			
0430 Contracts Payable			
0450 Short-Term Payables			
0460 Payroll Accruals and Withholdings			
0480 Unearned Revenues			
0490 Other Current Liabilities			
Total Liabilities			
0950 Deferred Inflows of Resources			
Net Position			
0791 Net Investment in Capital Assets			
0009 Restricted Net Position (0792 – 0798)			401,858
0799 Unrestricted Net Position			
Total Net Position			\$401,858
Total Liabilities, Deferred Inflows Of Resources And Net Position			\$401,858

Amounts Expressed in Whole Dollars	<u>Private Purpose Trust</u> <u>(71)</u>	<u>Investment Trust</u> <u>(72)</u>	<u>Pension Trust</u> <u>(73)</u>	<u>Student Activity</u> <u>Custodial</u> <u>(81)</u>	<u>Other Custodial</u> <u>(89)</u>	<u>Fiduciary Component</u> <u>Units</u> <u>(98)</u>
Additions						
0091 Gifts and Contributions	77,476			727,277		
0095 Net Investment Earnings						
0092 Other Additions						
Deductions						
0093 Scholarships Awarded	69,554					
0094 Other Deductions				717,695		
Change In Net Position	\$7,922			\$9,582		
0006 Net Position – Beginning of Fiscal Year	23,434			360,920		
0007 Net Position Held in Trust for Pension Benefits						
Net Position - End of Fiscal Year	\$31,356			\$370,502		

Amounts Expressed in Whole Dollars	<u>Total Fiduciary Funds</u>
Additions	
0091 Gifts and Contributions	804,753
0095 Net Investment Earnings	
0092 Other Additions	
Deductions	
0093 Scholarships Awarded	69,554
0094 Other Deductions	717,695
Change In Net Position	\$17,504
0006 Net Position – Beginning of Fiscal Year	384,354
0007 Net Position Held in Trust for Pension Benefits	
Net Position - End of Fiscal Year	\$401,858

	<u>Revenue Reported In Current Year</u>	<u>Current Year Tax Accrual</u>	<u>Prior Year Tax Accrual</u>	<u>Taxes Collected In Current Year</u>
<u>Revenue from Local Sources</u>				
6111 Current Real Estate Taxes	75,261,362.37			75,261,362.37
6112 Interim Real Estate Taxes	352,195.51	42,157.70	11,973.00	322,010.81
6113 Public Utility Realty Taxes	66,430.22			66,430.22
6153 Current Act 511 Real Estate Transfer Taxes	1,431,888.31	218,499.35	173,273.88	1,386,662.84
6411 Delinquent Real Estate Taxes	944,006.53	79,832.86	158,783.22	1,022,956.89
6500 Earnings on Investments	2,307,695.61			
6700 Revenues from LEA Activities	407,896.24			
6832 Federal IDEA Revenue Received as Pass Through	619,690.99			
6910 Rentals	132,932.95			
6920 Contributions and Donations from Private Sources	450,000.00			
6941 Regular Day School Tuition	1,141.28			
6944 Receipts from Other LEAs in Pennsylvania - Education	86,944.38			
6949 Other Tuition from Patrons	12,690.00			
6992 Energy Efficiency Revenues and Incentives	19,553.80			
6999 Other Revenues Not Specified Above	52,647.03			
TOTAL Revenue from Local Sources	\$82,147,075.22	\$340,489.91	\$344,030.10	\$78,059,423.13

**Revenue Reported
In Current Year**

Revenue from State Sources

7111 Basic Education Funding-Formula	4,390,314.15		
7160 Tuition for Orphans Subsidy	8,573.43		
7250 Migratory Children	120.00		
7271 Special Education funds for School-Aged Pupils	1,979,979.51		
7311 Pupil Transportation Subsidy	473,677.38		
7312 Nonpublic and Charter School Pupil Transportation Subsidy	65,450.00		
7320 Rental and Sinking Fund Payments / Building Reimbursement Subsidy	313,734.99		
7330 Health Services (Medical, Dental, Nurse, Act 25)	76,843.96		
7340 State Property Tax Reduction Allocation	1,876,394.39		
7362 School Mental Health & Safety and Security Grants	230,745.12		
7505 Ready to Learn Block Grant	127,325.00		
7810 State Share of Social Security and Medicare Taxes	1,651,381.25		
7820 State Share of Retirement Contributions	7,669,266.62		
TOTAL Revenue from State Sources	\$18,863,805.80		

	Revenue Reported In Current Year			
Revenue from Federal Sources				
8514 Title I - Improving the Academic Achievement of the Disadvantaged	115,964.60			
8515 Title II - Preparing, Training, and Recruiting High Quality Teachers and Principals	70,037.80			
8516 Title III - Language Instruction for English Learners and Immigrant Students	7,182.37			
8517 Title IV - 21st Century Schools	10,000.00			
8741 Elementary and Secondary School Emergency Relief Fund (ESSER)	443.76			
8810 School-Based Access Medicaid Reimbursement Program (SBAP) Reimbursements (Access)	1,020,036.99			
8820 Medical Assistance Reimbursement for Administrative Claiming (Quarterly) Program	5,613.11			
TOTAL Revenue from Federal Sources	\$1,229,278.63			

	Revenue Reported In Current Year			
Other Financing Sources				
9220 Leases and Other Right-to-Use Arrangements	431,878.79			
9400 Sale of or Compensation for Loss of Fixed Assets	68,183.00			
TOTAL Other Financing Sources	\$500,061.79			
TOTAL FROM ALL SOURCES	\$102,740,221.44	\$340,489.91	\$344,030.10	\$78,059,423.13

LEA : 124158503 Unionville-Chadds Ford SD

Printed 1/6/2025 3:51:17 PM

	<u>General Fund (10)</u>	<u>Student Sponsored Activity Fund (21)</u>	<u>Public Purpose Trust (27)</u>	<u>Other Compt Approved (28)</u>	<u>Athletic / Activity (29)</u>	<u>Capital Reserve (690, 1850) (31)</u>
6000 Revenue from Local Sources						
6111 Current Real Estate Taxes	75,261,362.37					
6112 Interim Real Estate Taxes	352,195.51					
6113 Public Utility Realty Taxes	66,430.22					
6153 Current Act 511 Real Estate Transfer Taxes	1,431,888.31					
6411 Delinquent Real Estate Taxes	944,006.53					
6500 Earnings on Investments	2,307,695.61					
6700 Revenues from LEA Activities	407,896.24					
6832 Federal IDEA Revenue Received as Pass Through	619,690.99					
6910 Rentals	132,932.95					
6920 Contributions and Donations from Private Sources	450,000.00					
6941 Regular Day School Tuition	1,141.28					
6944 Receipts from Other LEAs in Pennsylvania - Education	86,944.38					
6949 Other Tuition from Patrons	12,690.00					
6992 Energy Efficiency Revenues and Incentives	19,553.80					
6999 Other Revenues Not Specified Above	52,647.03					
6000 Total Revenue from Local Sources	\$82,147,075.22					
7000 Revenue from State Sources						
7111 Basic Education Funding-Formula	4,390,314.15					
7160 Tuition for Orphans Subsidy	8,573.43					
7250 Migratory Children	120.00					
7271 Special Education funds for School-Aged Pupils	1,979,979.51					
7311 Pupil Transportation Subsidy	473,677.38					
7312 Nonpublic and Charter School Pupil Transportation Subsidy	65,450.00					
7320 Rental and Sinking Fund Payments / Building Reimbursement Subsidy	313,734.99					
7330 Health Services (Medical, Dental, Nurse, Act 25)	76,843.96					
7340 State Property Tax Reduction Allocation	1,876,394.39					
7362 School Mental Health & Safety and Security Grants	230,745.12					
7505 Ready to Learn Block Grant	127,325.00					
7810 State Share of Social Security and Medicare Taxes	1,651,381.25					
7820 State Share of Retirement Contributions	7,669,266.62					
7000 Total Revenue from State Sources	\$18,863,805.80					
8000 Revenue from Federal Sources						
8514 Title I - Improving the Academic Achievement of the Disadvantaged	115,964.60					

LEA : 124158503 Unionville-Chadds Ford SD

Printed 1/6/2025 3:51:17 PM

	<u>Capital Reserve</u> <u>(1431) (32)</u>	<u>Other Capital</u> <u>Projects Fund (39)</u>	<u>Debt Service (40)</u>	<u>Permanent (90)</u>	<u>Total</u>
6000 Revenue from Local Sources					
6111 Current Real Estate Taxes					75,261,362.37
6112 Interim Real Estate Taxes					352,195.51
6113 Public Utility Realty Taxes					66,430.22
6153 Current Act 511 Real Estate Transfer Taxes					1,431,888.31
6411 Delinquent Real Estate Taxes					944,006.53
6500 Earnings on Investments	35,958.34	373,483.08			2,717,137.03
6700 Revenues from LEA Activities					407,896.24
6832 Federal IDEA Revenue Received as Pass Through					619,690.99
6910 Rentals					132,932.95
6920 Contributions and Donations from Private Sources					450,000.00
6941 Regular Day School Tuition					1,141.28
6944 Receipts from Other LEAs in Pennsylvania - Education					86,944.38
6949 Other Tuition from Patrons					12,690.00
6992 Energy Efficiency Revenues and Incentives					19,553.80
6999 Other Revenues Not Specified Above					52,647.03
6000 Total Revenue from Local Sources	\$35,958.34	\$373,483.08			\$82,556,516.64
7000 Revenue from State Sources					
7111 Basic Education Funding-Formula					4,390,314.15
7160 Tuition for Orphans Subsidy					8,573.43
7250 Migratory Children					120.00
7271 Special Education funds for School-Aged Pupils					1,979,979.51
7311 Pupil Transportation Subsidy					473,677.38
7312 Nonpublic and Charter School Pupil Transportation Subsidy					65,450.00
7320 Rental and Sinking Fund Payments / Building Reimbursement Subsidy					313,734.99
7330 Health Services (Medical, Dental, Nurse, Act 25)					76,843.96
7340 State Property Tax Reduction Allocation					1,876,394.39
7362 School Mental Health & Safety and Security Grants					230,745.12
7505 Ready to Learn Block Grant					127,325.00
7810 State Share of Social Security and Medicare Taxes					1,651,381.25
7820 State Share of Retirement Contributions					7,669,266.62
7000 Total Revenue from State Sources					\$18,863,805.80
8000 Revenue from Federal Sources					
8514 Title I - Improving the Academic Achievement of the Disadvantaged					115,964.60

LEA : 124158503 Unionville-Chadds Ford SD

Printed 1/6/2025 3:51:17 PM

	<u>General Fund (10)</u>	<u>Student Sponsored Activity Fund (21)</u>	<u>Public Purpose Trust (27)</u>	<u>Other Compt Approved (28)</u>	<u>Athletic / Activity (29)</u>	<u>Capital Reserve (690.1850) (31)</u>
8000 Revenue from Federal Sources						
8515 Title II - Preparing, Training, and Recruiting High Quality Teachers and Principals	70,037.80					
8516 Title III - Language Instruction for English Learners and Immigrant Students	7,182.37					
8517 Title IV - 21st Century Schools	10,000.00					
8741 Elementary and Secondary School Emergency Relief Fund (ESSER)	443.76					
8810 School-Based Access Medicaid Reimbursement Program (SBAP) Reimbursements (Access)	1,020,036.99					
8820 Medical Assistance Reimbursement for Administrative Claiming (Quarterly) Program	5,613.11					
8000 Total Revenue from Federal Sources	\$1,229,278.63					
9000 Other Financing Sources						
9110 Face Value of Bonds Issued						
9130 Bond Premiums						
9220 Leases and Other Right-to-Use Arrangements	431,878.79					
9400 Sale of or Compensation for Loss of Fixed Assets	68,183.00					
9000 Total Other Financing Sources	\$500,061.79					
Total From All Sources	\$102,740,221.44					

	<u>Capital Reserve</u> <u>(1431) (32)</u>	<u>Other Capital</u> <u>Projects Fund (39)</u>	<u>Debt Service (40)</u>	<u>Permanent (90)</u>	<u>Total</u>
8000 Revenue from Federal Sources					
8515 Title II - Preparing, Training, and Recruiting High Quality Teachers and Principals					70,037.80
8516 Title III - Language Instruction for English Learners and Immigrant Students					7,182.37
8517 Title IV - 21st Century Schools					10,000.00
8741 Elementary and Secondary School Emergency Relief Fund (ESSER)					443.76
8810 School-Based Access Medicaid Reimbursement Program (SBAP) Reimbursements (Access)					1,020,036.99
8820 Medical Assistance Reimbursement for Administrative Claiming (Quarterly) Program					5,613.11
8000 Total Revenue from Federal Sources					\$1,229,278.63
9000 Other Financing Sources					
9110 Face Value of Bonds Issued		12,790,000.00			12,790,000.00
9130 Bond Premiums		1,421,344.20			1,421,344.20
9220 Leases and Other Right-to-Use Arrangements					431,878.79
9400 Sale of or Compensation for Loss of Fixed Assets					68,183.00
9000 Total Other Financing Sources		\$14,211,344.20			\$14,711,405.99
Total From All Sources	\$35,958.34	\$14,584,827.28			\$117,361,007.06

	<u>General Fund (10)</u>	<u>Student Sponsored Activity Fund (21)</u>	<u>Public Purpose Trust (27)</u>	<u>Other Compt Approved (28)</u>	<u>Athletic / Activity (29)</u>	<u>Capital Reserve (690. 1850) (31)</u>
Revenue from Local Sources	82,147,075.22					
Revenue from State Sources	18,863,805.80					
Revenue from Federal Sources	1,229,278.63					
Other Financing Sources	500,061.79					
Total From All Sources	\$102,740,221.44					

	<u>Capital Reserve (1431)</u> <u>(32)</u>	<u>Other Capital Projects</u> <u>Fund (39)</u>	<u>Debt Service (40)</u>	<u>Permanent (90)</u>	<u>Total</u>
Revenue from Local Sources	35,958.34	373,483.08			82,556,516.64
Revenue from State Sources					18,863,805.80
Revenue from Federal Sources					1,229,278.63
Other Financing Sources		14,211,344.20			14,711,405.99
Total From All Sources	\$35,958.34	\$14,584,827.28			\$117,361,007.06

General Fund (10)

	<u>Total</u>
1000 Instruction	
100 Personnel Services – Salaries	
100 Personnel Services – Salaries	30,393,471.88
Total Personnel Services – Salaries	\$30,393,471.88
200 Personnel Services – Employee Benefits	
220 Social Security Contributions	2,221,167.42
230 PSERS Retirement Contributions	10,171,053.41
250 Unemployment Compensation	1,643.80
260 Workers' Compensation	289,589.68
270 Group Insurance – Self-Insurance	6,497,510.53
Total Personnel Services – Employee Benefits	\$19,180,964.84
300 Purchased Professional and Technical Services	
322 Professional Educational Services – Ius	4,229,342.98
329 Professional Educational Services – Other	2,745,969.65
330 Other Professional Services	829,074.61
390 Other Purchased Professional and Technical Services	249.28
Total Purchased Professional and Technical Services	\$7,804,636.52
400 Purchased Property Services	
430 Repairs and Maintenance Services	55,710.64
Total Purchased Property Services	\$55,710.64
500 Other Purchased Services	
530 Communications	1,040.32
561 Tuition To Other School Districts Within the State	165,516.30
562 Tuition To Pennsylvania Charter Schools	698,034.32
564 Tuition To Career and Technology Centers	963,092.36
567 Tuition To Approved Private Schools (APS) and PA Chartered Schools for the Deaf and Blind	42,599.03
569 Tuition – Other	119,594.96
580 Travel	61,705.21
594 IU Payment By Withholding for Institutionalized Children's Programs – Special Classes	557.58
599 Other Miscellaneous Purchased Services	9,988.85
Total Other Purchased Services	\$2,062,128.93
600 Supplies	
610 General Supplies	271,239.46
630 Food	99.62
640 Books and Periodicals	504,635.79
650 Supplies & Fees – Technology Related	35,671.93
Total Supplies	\$811,646.80
700 Property	
752 Capital Equipment – Original and Additional	82,279.01
762 Capitalized Equipment - Replacement	54,575.00
Total Property	\$136,854.01
800 Other Objects	

General Fund (10)

1000 Instruction	<u>Total</u>
800 <u>Other Objects</u>	
810 Dues and Fees	2,346.00
Total Other Objects	\$2,346.00
Total 1000 Instruction	\$60,447,759.62

General Fund (10)

1100 Regular Programs – Elementary / Secondary	<u>Elementary</u>	<u>Secondary</u>	<u>Federal</u>	<u>Total</u>
100 Personnel Services – Salaries				
100 Personnel Services – Salaries	11,210,622.78	12,328,266.89	97,514.00	23,636,403.67
Total Personnel Services – Salaries	\$11,210,622.78	\$12,328,266.89	\$97,514.00	\$23,636,403.67
200 Personnel Services – Employee Benefits				
220 Social Security Contributions	822,487.71	904,518.28		1,727,005.99
230 PSERS Retirement Contributions	3,767,590.51	4,124,819.02	18,531.00	7,910,940.53
250 Unemployment Compensation	561.09	617.05		1,178.14
260 Workers' Compensation	107,234.27	117,929.25		225,163.52
270 Group Insurance – Self-Insurance	2,275,860.42	2,502,842.67		4,778,703.09
Total Personnel Services – Employee Benefits	\$6,973,734.00	\$7,650,726.27	\$18,531.00	\$14,642,991.27
300 Purchased Professional and Technical Services				
322 Professional Educational Services – lus		6,343.92	2,550.00	8,893.92
329 Professional Educational Services – Other	661,993.81	431,840.47		1,093,834.28
330 Other Professional Services			2,507.80	2,507.80
Total Purchased Professional and Technical Services	\$661,993.81	\$438,184.39	\$5,057.80	\$1,105,236.00
400 Purchased Property Services				
430 Repairs and Maintenance Services	29,276.41	25,239.26		54,515.67
Total Purchased Property Services	\$29,276.41	\$25,239.26		\$54,515.67
500 Other Purchased Services				
530 Communications	460.12	460.13		920.25
562 Tuition To Pennsylvania Charter Schools	156,236.29	328,800.25		485,036.54
569 Tuition – Other	20,342.00	28,751.98		49,093.98
580 Travel	9,828.77	42,672.01		52,500.78
Total Other Purchased Services	\$186,867.18	\$400,684.37		\$587,551.55
600 Supplies				
610 General Supplies	103,272.09	130,735.99	1,284.13	235,292.21
640 Books and Periodicals	316,435.72	175,425.68	1,204.24	493,065.64
Total Supplies	\$419,707.81	\$306,161.67	\$2,488.37	\$728,357.85
700 Property				
752 Capital Equipment – Original and Additional	30,172.51	52,106.50		82,279.01
762 Capitalized Equipment - Replacement	31,046.44	23,528.56		54,575.00
Total Property	\$61,218.95	\$75,635.06		\$136,854.01
800 Other Objects				
810 Dues and Fees		749.00		749.00
Total Other Objects		\$749.00		\$749.00
Total 1100 Regular Programs – Elementary / Secondary	\$19,543,420.94	\$21,225,646.91	\$123,591.17	\$40,892,659.02

General Fund (10)

1110 Regular Programs

	<u>Elementary</u>	<u>Secondary</u>	<u>Federal</u>	<u>Total</u>
100 Personnel Services – Salaries				
100 Personnel Services – Salaries	11,210,622.78	12,328,266.89	444.00	23,539,333.67
Total Personnel Services – Salaries	\$11,210,622.78	\$12,328,266.89	\$444.00	\$23,539,333.67
200 Personnel Services – Employee Benefits				
220 Social Security Contributions	822,487.71	904,518.28		1,727,005.99
230 PSERS Retirement Contributions	3,767,590.51	4,124,819.02		7,892,409.53
250 Unemployment Compensation	561.09	617.05		1,178.14
260 Workers' Compensation	107,234.27	117,929.25		225,163.52
270 Group Insurance – Self-Insurance	2,275,860.42	2,502,842.67		4,778,703.09
Total Personnel Services – Employee Benefits	\$6,973,734.00	\$7,650,726.27		\$14,624,460.27
300 Purchased Professional and Technical Services				
322 Professional Educational Services – lus		6,343.92		6,343.92
329 Professional Educational Services – Other	661,993.81	431,840.47		1,093,834.28
Total Purchased Professional and Technical Services	\$661,993.81	\$438,184.39		\$1,100,178.20
400 Purchased Property Services				
430 Repairs and Maintenance Services	29,276.41	25,239.26		54,515.67
Total Purchased Property Services	\$29,276.41	\$25,239.26		\$54,515.67
500 Other Purchased Services				
530 Communications	460.12	460.13		920.25
562 Tuition To Pennsylvania Charter Schools	156,236.29	328,800.25		485,036.54
569 Tuition – Other	20,342.00	28,751.98		49,093.98
580 Travel	9,828.77	42,672.01		52,500.78
Total Other Purchased Services	\$186,867.18	\$400,684.37		\$587,551.55
600 Supplies				
610 General Supplies	103,272.09	130,735.99		234,008.08
640 Books and Periodicals	316,435.72	175,425.68		491,861.40
Total Supplies	\$419,707.81	\$306,161.67		\$725,869.48
700 Property				
752 Capital Equipment – Original and Additional	30,172.51	52,106.50		82,279.01
762 Capitalized Equipment - Replacement	31,046.44	23,528.56		54,575.00
Total Property	\$61,218.95	\$75,635.06		\$136,854.01
800 Other Objects				
810 Dues and Fees		749.00		749.00
Total Other Objects		\$749.00		\$749.00
Total 1110 Regular Programs	\$19,543,420.94	\$21,225,646.91	\$444.00	\$40,769,511.85

General Fund (10)

	<u>Elementary</u>	<u>Secondary</u>	<u>Federal</u>	<u>Total</u>
1190 Federally-Funded Regular Programs				
100 Personnel Services – Salaries				
100 Personnel Services – Salaries			97,070.00	97,070.00
Total Personnel Services – Salaries			\$97,070.00	\$97,070.00
200 Personnel Services – Employee Benefits				
230 PSERS Retirement Contributions			18,531.00	18,531.00
Total Personnel Services – Employee Benefits			\$18,531.00	\$18,531.00
300 Purchased Professional and Technical Services				
322 Professional Educational Services – Ius			2,550.00	2,550.00
330 Other Professional Services			2,507.80	2,507.80
Total Purchased Professional and Technical Services			\$5,057.80	\$5,057.80
600 Supplies				
610 General Supplies			1,284.13	1,284.13
640 Books and Periodicals			1,204.24	1,204.24
Total Supplies			\$2,488.37	\$2,488.37
Total 1190 Federally-Funded Regular Programs			\$123,147.17	\$123,147.17

General Fund (10)

1200 Special Programs – Elementary / Secondary

	<u>Elementary</u>	<u>Secondary</u>	<u>Federal</u>	<u>Total</u>
100 Personnel Services – Salaries				
100 Personnel Services – Salaries	3,740,911.77	2,252,724.30	760,510.74	6,754,146.81
Total Personnel Services – Salaries	\$3,740,911.77	\$2,252,724.30	\$760,510.74	\$6,754,146.81
200 Personnel Services – Employee Benefits				
220 Social Security Contributions	247,561.06	217,175.36	29,089.53	493,825.95
230 PSERS Retirement Contributions	1,132,078.30	997,219.65	129,286.83	2,258,584.78
250 Unemployment Compensation	245.12	220.54		465.66
260 Workers' Compensation	33,974.13	30,408.29		64,382.42
270 Group Insurance – Self-Insurance	869,412.76	769,006.41	80,388.27	1,718,807.44
Total Personnel Services – Employee Benefits	\$2,283,271.37	\$2,014,030.25	\$238,764.63	\$4,536,066.25
300 Purchased Professional and Technical Services				
322 Professional Educational Services – lus	995,109.67	2,820,897.39	404,442.00	4,220,449.06
329 Professional Educational Services – Other	1,259,331.20	380,583.27	1,062.00	1,640,976.47
330 Other Professional Services	107,505.52	719,061.29		826,566.81
390 Other Purchased Professional and Technical Services	171.33	77.95		249.28
Total Purchased Professional and Technical Services	\$2,362,117.72	\$3,920,619.90	\$405,504.00	\$6,688,241.62
400 Purchased Property Services				
430 Repairs and Maintenance Services	597.48	597.49		1,194.97
Total Purchased Property Services	\$597.48	\$597.49		\$1,194.97
500 Other Purchased Services				
530 Communications		120.07		120.07
561 Tuition To Other School Districts Within the State		52,294.47		52,294.47
562 Tuition To Pennsylvania Charter Schools	81,479.82	131,517.96		212,997.78
567 Tuition To Approved Private Schools (APS) and PA Chartered Schools for the Deaf and Blind	9,206.31	33,392.72		42,599.03
569 Tuition – Other	9,468.00	61,032.98		70,500.98
580 Travel	3,174.40	6,030.03		9,204.43
594 IU Payment By Withholding for Institutionalized Children’s Programs – Special Classes	557.58			557.58
Total Other Purchased Services	\$103,886.11	\$284,388.23		\$388,274.34
600 Supplies				
610 General Supplies	15,763.75	20,183.50		35,947.25
630 Food	29.21	70.41		99.62
640 Books and Periodicals	11,224.34	345.81		11,570.15
650 Supplies & Fees – Technology Related	18,882.20	16,789.73		35,671.93
Total Supplies	\$45,899.50	\$37,389.45		\$83,288.95
800 Other Objects				
810 Dues and Fees	353.00	1,244.00		1,597.00
Total Other Objects	\$353.00	\$1,244.00		\$1,597.00
Total 1200 Special Programs – Elementary / Secondary	\$8,537,036.95	\$8,510,993.62	\$1,404,779.37	\$18,452,809.94

General Fund (10)

1210 Life Skills Support

	<u>Elementary</u>	<u>Secondary</u>	<u>Federal</u>	<u>Total</u>
100 Personnel Services – Salaries				
100 Personnel Services – Salaries	65,288.88	74,358.12	60,621.00	200,268.00
Total Personnel Services – Salaries	\$65,288.88	\$74,358.12	\$60,621.00	\$200,268.00
200 Personnel Services – Employee Benefits				
220 Social Security Contributions	4,056.30	8,386.05	2,318.75	14,761.10
230 PSERS Retirement Contributions	21,568.50	44,591.00	10,305.57	76,465.07
250 Unemployment Compensation	4.55	9.42		13.97
260 Workers' Compensation	627.39	1,297.08		1,924.47
270 Group Insurance – Self-Insurance	20,208.86	41,780.06		61,988.92
Total Personnel Services – Employee Benefits	\$46,465.60	\$96,063.61	\$12,624.32	\$155,153.53
300 Purchased Professional and Technical Services				
322 Professional Educational Services – lus	(16,831.15)	265,187.27	404,442.00	652,798.12
329 Professional Educational Services – Other	131,990.76	156,052.39		288,043.15
Total Purchased Professional and Technical Services	\$115,159.61	\$421,239.66	\$404,442.00	\$940,841.27
500 Other Purchased Services				
530 Communications		120.07		120.07
561 Tuition To Other School Districts Within the State		45,000.00		45,000.00
Total Other Purchased Services		\$45,120.07		\$45,120.07
600 Supplies				
610 General Supplies	4,289.66	2,682.53		6,972.19
Total Supplies	\$4,289.66	\$2,682.53		\$6,972.19
Total 1210 Life Skills Support	\$231,203.75	\$639,463.99	\$477,687.32	\$1,348,355.06

General Fund (10)

1220 Sensory Support

	<u>Elementary</u>	<u>Secondary</u>	<u>Federal</u>	<u>Total</u>
100 Personnel Services – Salaries				
100 Personnel Services – Salaries	443,256.50	52,515.37	73,037.80	568,809.67
Total Personnel Services – Salaries	\$443,256.50	\$52,515.37	\$73,037.80	\$568,809.67
200 Personnel Services – Employee Benefits				
220 Social Security Contributions	30,240.17	8,565.60	2,793.70	41,599.47
230 PSERS Retirement Contributions	137,983.27	39,084.08	12,416.43	189,483.78
250 Unemployment Compensation	21.77	6.17		27.94
260 Workers' Compensation	4,226.39	1,197.13		5,423.52
270 Group Insurance – Self-Insurance	72,878.88	20,643.11	25,823.88	119,345.87
Total Personnel Services – Employee Benefits	\$245,350.48	\$69,496.09	\$41,034.01	\$355,880.58
300 Purchased Professional and Technical Services				
322 Professional Educational Services – lus	103,955.02	3,377.81		107,332.83
329 Professional Educational Services – Other	20,476.51			20,476.51
Total Purchased Professional and Technical Services	\$124,431.53	\$3,377.81		\$127,809.34
600 Supplies				
610 General Supplies	436.43	320.00		756.43
Total Supplies	\$436.43	\$320.00		\$756.43
Total 1220 Sensory Support	\$813,474.94	\$125,709.27	\$114,071.81	\$1,053,256.02

General Fund (10)

1230 Emotional Support

	<u>Elementary</u>	<u>Secondary</u>	<u>Federal</u>	<u>Total</u>
100 Personnel Services – Salaries				
100 Personnel Services – Salaries	614,745.10	363,703.88	190,163.00	1,168,611.98
Total Personnel Services – Salaries	\$614,745.10	\$363,703.88	\$190,163.00	\$1,168,611.98
200 Personnel Services – Employee Benefits				
220 Social Security Contributions	29,405.16	48,868.39	7,273.74	85,547.29
230 PSERS Retirement Contributions	134,241.21	223,095.31	32,327.71	389,664.23
250 Unemployment Compensation	26.24	43.61		69.85
260 Workers' Compensation	4,189.95	6,963.26		11,153.21
270 Group Insurance – Self-Insurance	84,927.74	141,141.30	15,073.81	241,142.85
Total Personnel Services – Employee Benefits	\$252,790.30	\$420,111.87	\$54,675.26	\$727,577.43
300 Purchased Professional and Technical Services				
322 Professional Educational Services – lus	520,181.00	1,722,307.97		2,242,488.97
329 Professional Educational Services – Other	561,008.60	147,408.47		708,417.07
Total Purchased Professional and Technical Services	\$1,081,189.60	\$1,869,716.44		\$2,950,906.04
500 Other Purchased Services				
561 Tuition To Other School Districts Within the State		1,650.00		1,650.00
567 Tuition To Approved Private Schools (APS) and PA Chartered Schools for the Deaf and Blind		24,186.41		24,186.41
Total Other Purchased Services		\$25,836.41		\$25,836.41
600 Supplies				
610 General Supplies	6,200.55	15,652.65		21,853.20
640 Books and Periodicals		74.18		74.18
Total Supplies	\$6,200.55	\$15,726.83		\$21,927.38
Total 1230 Emotional Support	\$1,954,925.55	\$2,695,095.43	\$244,838.26	\$4,894,859.24

General Fund (10)

1240 Academic Support

	<u>Elementary</u>	<u>Secondary</u>	<u>Federal</u>	<u>Total</u>
100 Personnel Services – Salaries				
100 Personnel Services – Salaries	2,490,513.98	1,651,693.35	248,464.11	4,390,671.44
Total Personnel Services – Salaries	\$2,490,513.98	\$1,651,693.35	\$248,464.11	\$4,390,671.44
200 Personnel Services – Employee Benefits				
220 Social Security Contributions	176,694.85	134,519.89	9,503.75	320,718.49
230 PSERS Retirement Contributions	805,413.45	613,206.51	42,238.90	1,460,858.86
250 Unemployment Compensation	185.61	145.01		330.62
260 Workers' Compensation	23,716.11	18,097.47		41,813.58
270 Group Insurance – Self-Insurance	673,107.34	522,464.01	338.18	1,195,909.53
Total Personnel Services – Employee Benefits	\$1,679,117.36	\$1,288,432.89	\$52,080.83	\$3,019,631.08
300 Purchased Professional and Technical Services				
322 Professional Educational Services – lus	79,630.49	558,805.01		638,435.50
329 Professional Educational Services – Other	421,058.80	65,859.72	1,062.00	487,980.52
Total Purchased Professional and Technical Services	\$500,689.29	\$624,664.73	\$1,062.00	\$1,126,416.02
500 Other Purchased Services				
580 Travel		160.00		160.00
Total Other Purchased Services		\$160.00		\$160.00
600 Supplies				
610 General Supplies	1,535.62	258.30		1,793.92
640 Books and Periodicals	11,224.34	271.63		11,495.97
Total Supplies	\$12,759.96	\$529.93		\$13,289.89
Total 1240 Academic Support	\$4,683,080.59	\$3,565,480.90	\$301,606.94	\$8,550,168.43

General Fund (10)

	<u>Elementary</u>	<u>Secondary</u>	<u>Federal</u>	<u>Total</u>
1241 Learning Support – Public				
100 Personnel Services – Salaries				
100 Personnel Services – Salaries	2,112,744.58	1,490,914.66	248,464.11	3,852,123.35
Total Personnel Services – Salaries	\$2,112,744.58	\$1,490,914.66	\$248,464.11	\$3,852,123.35
200 Personnel Services – Employee Benefits				
220 Social Security Contributions	149,161.81	122,801.82	9,503.75	281,467.38
230 PSERS Retirement Contributions	680,001.62	559,831.22	42,238.90	1,282,071.74
250 Unemployment Compensation	166.01	136.67		302.68
260 Workers' Compensation	20,126.50	16,569.73		36,696.23
270 Group Insurance – Self-Insurance	593,416.73	488,547.68	338.18	1,082,302.59
Total Personnel Services – Employee Benefits	\$1,442,872.67	\$1,187,887.12	\$52,080.83	\$2,682,840.62
300 Purchased Professional and Technical Services				
322 Professional Educational Services – lus	79,630.49	558,805.01		638,435.50
329 Professional Educational Services – Other	421,058.80	65,859.72	1,062.00	487,980.52
Total Purchased Professional and Technical Services	\$500,689.29	\$624,664.73	\$1,062.00	\$1,126,416.02
500 Other Purchased Services				
580 Travel		160.00		160.00
Total Other Purchased Services		\$160.00		\$160.00
600 Supplies				
610 General Supplies		55.00		55.00
640 Books and Periodicals	11,224.34	271.63		11,495.97
Total Supplies	\$11,224.34	\$326.63		\$11,550.97
Total 1241 Learning Support – Public	\$4,067,530.88	\$3,303,953.14	\$301,606.94	\$7,673,090.96

General Fund (10)

1243 Gifted Support

	<u>Elementary</u>	<u>Secondary</u>	<u>Federal</u>	<u>Total</u>
100 Personnel Services – Salaries				
100 Personnel Services – Salaries	377,769.40	160,778.69		538,548.09
Total Personnel Services – Salaries	\$377,769.40	\$160,778.69		\$538,548.09
200 Personnel Services – Employee Benefits				
220 Social Security Contributions	27,533.04	11,718.07		39,251.11
230 PSERS Retirement Contributions	125,411.83	53,375.29		178,787.12
250 Unemployment Compensation	19.60	8.34		27.94
260 Workers' Compensation	3,589.61	1,527.74		5,117.35
270 Group Insurance – Self-Insurance	79,690.61	33,916.33		113,606.94
Total Personnel Services – Employee Benefits	\$236,244.69	\$100,545.77		\$336,790.46
600 Supplies				
610 General Supplies	1,535.62	203.30		1,738.92
Total Supplies	\$1,535.62	\$203.30		\$1,738.92
Total 1243 Gifted Support	\$615,549.71	\$261,527.76		\$877,077.47

General Fund (10)

1270 Multi-Handicapped Support

300 Purchased Professional and Technical Services

322 Professional Educational Services – Ius

329 Professional Educational Services – Other

Total Purchased Professional and Technical Services

Elementary

Secondary

Federal

Total

217,287.11

128,703.21

345,990.32

1,764.88

1,764.88

\$217,287.11

\$130,468.09

\$347,755.20

500 Other Purchased Services

561 Tuition To Other School Districts Within the State

Total Other Purchased Services

5,644.47

5,644.47

\$5,644.47

\$5,644.47

600 Supplies

610 General Supplies

Total Supplies

3,030.00

875.98

3,905.98

\$3,030.00

\$875.98

\$3,905.98

Total 1270 Multi-Handicapped Support

\$220,317.11

\$136,988.54

\$357,305.65

General Fund (10)

1280 Early Intervention Support

300 Purchased Professional and Technical Services

322 Professional Educational Services – lus

Total Purchased Professional and Technical Services

Total 1280 Early Intervention Support

Elementary

Secondary

Federal

Total

40,097.10

40,097.10

\$40,097.10

\$40,097.10

\$40,097.10

\$40,097.10

General Fund (10)

	<u>Elementary</u>	<u>Secondary</u>	<u>Federal</u>	<u>Total</u>
1290 Special Programs - Other Support				
100 Personnel Services – Salaries				
100 Personnel Services – Salaries	127,107.31	110,453.58	188,224.83	425,785.72
Total Personnel Services – Salaries	\$127,107.31	\$110,453.58	\$188,224.83	\$425,785.72
200 Personnel Services – Employee Benefits				
220 Social Security Contributions	7,164.58	16,835.43	7,199.59	31,199.60
230 PSERS Retirement Contributions	32,871.87	77,242.75	31,998.22	142,112.84
250 Unemployment Compensation	6.95	16.33		23.28
260 Workers' Compensation	1,214.29	2,853.35		4,067.64
270 Group Insurance – Self-Insurance	18,289.94	42,977.93	39,152.40	100,420.27
Total Personnel Services – Employee Benefits	\$59,547.63	\$139,925.79	\$78,350.21	\$277,823.63
300 Purchased Professional and Technical Services				
322 Professional Educational Services – lus	50,790.10	142,516.12		193,306.22
329 Professional Educational Services – Other	88,619.71	7,669.87		96,289.58
330 Other Professional Services	107,505.52	719,061.29		826,566.81
390 Other Purchased Professional and Technical Services	171.33	77.95		249.28
Total Purchased Professional and Technical Services	\$247,086.66	\$869,325.23		\$1,116,411.89
400 Purchased Property Services				
430 Repairs and Maintenance Services	597.48	597.49		1,194.97
Total Purchased Property Services	\$597.48	\$597.49		\$1,194.97
500 Other Purchased Services				
562 Tuition To Pennsylvania Charter Schools	81,479.82	131,517.96		212,997.78
567 Tuition To Approved Private Schools (APS) and PA Chartered Schools for the Deaf and Blind	9,206.31	9,206.31		18,412.62
569 Tuition – Other	9,468.00	61,032.98		70,500.98
580 Travel	3,174.40	5,870.03		9,044.43
594 IU Payment By Withholding for Institutionalized Children’s Programs – Special Classes	557.58			557.58
Total Other Purchased Services	\$103,886.11	\$207,627.28		\$311,513.39
600 Supplies				
610 General Supplies	221.50	394.04		615.54
630 Food	29.21	70.41		99.62
650 Supplies & Fees – Technology Related	18,882.20	16,789.73		35,671.93
Total Supplies	\$19,132.91	\$17,254.18		\$36,387.09
800 Other Objects				
810 Dues and Fees	353.00	1,244.00		1,597.00
Total Other Objects	\$353.00	\$1,244.00		\$1,597.00
Total 1290 Special Programs - Other Support	\$557,711.10	\$1,346,427.55	\$266,575.04	\$2,170,713.69

General Fund (10)

1300 Vocational Education

500 Other Purchased Services

561 Tuition To Other School Districts Within the State

564 Tuition To Career and Technology Centers

Total Other Purchased Services

Total 1300 Vocational Education

Elementary

Secondary

Federal

Total

48,097.50

48,097.50

963,092.36

963,092.36

\$1,011,189.86

\$1,011,189.86

\$1,011,189.86

\$1,011,189.86

General Fund (10)

	<u>Elementary</u>	<u>Secondary</u>	<u>Federal</u>	<u>Total</u>
1400 Other Instructional Programs – Elementary / Secondary				
100 Personnel Services – Salaries				
100 Personnel Services – Salaries		2,921.40		2,921.40
Total Personnel Services – Salaries		\$2,921.40		\$2,921.40
200 Personnel Services – Employee Benefits				
220 Social Security Contributions		335.48		335.48
230 PSERS Retirement Contributions		1,528.10		1,528.10
260 Workers' Compensation		43.74		43.74
Total Personnel Services – Employee Benefits		\$1,907.32		\$1,907.32
300 Purchased Professional and Technical Services				
329 Professional Educational Services – Other		11,158.90		11,158.90
Total Purchased Professional and Technical Services		\$11,158.90		\$11,158.90
500 Other Purchased Services				
561 Tuition To Other School Districts Within the State		65,124.33		65,124.33
599 Other Miscellaneous Purchased Services		9,988.85		9,988.85
Total Other Purchased Services		\$75,113.18		\$75,113.18
Total 1400 Other Instructional Programs – Elementary / Secondary		\$91,100.80		\$91,100.80

General Fund (10)

1410 Drivers' Education

300 Purchased Professional and Technical Services

329 Professional Educational Services – Other

Total Purchased Professional and Technical Services

Total 1410 Drivers' Education

Elementary

Secondary

Federal

Total

10,939.96

10,939.96

\$10,939.96

\$10,939.96

\$10,939.96

\$10,939.96

General Fund (10)

1430 Homebound Instruction

100 Personnel Services – Salaries

100 Personnel Services – Salaries

Total Personnel Services – Salaries

200 Personnel Services – Employee Benefits

220 Social Security Contributions

230 PSERS Retirement Contributions

260 Workers' Compensation

Total Personnel Services – Employee Benefits

300 Purchased Professional and Technical Services

329 Professional Educational Services – Other

Total Purchased Professional and Technical Services

Total 1430 Homebound Instruction

	<u>Elementary</u>	<u>Secondary</u>	<u>Federal</u>	<u>Total</u>
		2,921.40		2,921.40
		\$2,921.40		\$2,921.40
		335.48		335.48
		1,528.10		1,528.10
		43.74		43.74
		\$1,907.32		\$1,907.32
		218.94		218.94
		\$218.94		\$218.94
		\$5,047.66		\$5,047.66

General Fund (10)

1440 Alternative Regular Education Programs

Elementary

Secondary

Federal

Total

500 Other Purchased Services

561 Tuition To Other School Districts Within the State

65,124.33

65,124.33

599 Other Miscellaneous Purchased Services

9,988.85

9,988.85

Total Other Purchased Services

\$75,113.18

\$75,113.18

Total 1440 Alternative Regular Education Programs

\$75,113.18

\$75,113.18

General Fund (10)

1441 Adjudicated / Court-Placed Programs

Elementary

Secondary

Federal

Total

500 Other Purchased Services

561 Tuition To Other School Districts Within the State

65,124.33

65,124.33

599 Other Miscellaneous Purchased Services

9,988.85

9,988.85

Total Other Purchased Services

\$75,113.18

\$75,113.18

Total 1441 Adjudicated / Court-Placed Programs

\$75,113.18

\$75,113.18

General Fund (10)

2000 Support Services

Total

100 Personnel Services – Salaries

100 Personnel Services – Salaries 14,167,581.72

Total Personnel Services – Salaries \$14,167,581.72

200 Personnel Services – Employee Benefits

220 Social Security Contributions 1,035,668.43

230 PSERS Retirement Contributions 4,725,096.38

240 Tuition Reimbursement 346,606.63

250 Unemployment Compensation 5,342.90

260 Workers' Compensation 355,636.27

270 Group Insurance – Self-Insurance 3,104,785.82

Total Personnel Services – Employee Benefits \$9,573,136.43

300 Purchased Professional and Technical Services

329 Professional Educational Services – Other 468,205.90

330 Other Professional Services 320,192.13

340 Technical Services 18,690.95

350 Security / Safety Services 5,800.00

390 Other Purchased Professional and Technical Services 2,780.00

Total Purchased Professional and Technical Services \$815,668.98

400 Purchased Property Services

410 Cleaning Services 54,171.15

420 Utility Services 144,014.70

430 Repairs and Maintenance Services 738,839.48

440 Rentals 63,746.74

Total Purchased Property Services \$1,000,772.07

500 Other Purchased Services

513 Contracted Carriers 5,163.71

516 Student Transportation Services From the IU 3,969.73

520 Insurance – General 4,694.13

521 Fire Insurance 203,446.00

522 Automotive Liability Insurance 115,721.00

523 General Property and Liability Insurance 116,062.00

529 Other Insurance 176,939.00

530 Communications 121,320.35

541 Advertising Related to Federal Grant Awards 19,787.68

550 Printing and Binding 6,205.88

580 Travel 44,912.85

591 Services Purchased Locally 31,519.62

595 IU Payments By Withholding 40,328.07

Total Other Purchased Services \$890,070.02

600 Supplies

610 General Supplies 920,584.71

620 Energy 1,611,958.45

630 Food 21,485.38

640 Books and Periodicals 61,043.55

General Fund (10)

2000 Support Services

Total

600 <u>Supplies</u>		
650 Supplies & Fees – Technology Related		12,212.00
Total Supplies		\$2,627,284.09
700 <u>Property</u>		
736 Technology Equipment Lease		339,506.00
738 Technology Software Lease and Other Right-to-Use Arrangements		123,194.00
752 Capital Equipment – Original and Additional		36,066.48
756 Capitalized Technology Equipment – Original		703,735.82
762 Capitalized Equipment - Replacement		419,485.39
766 Capitalized Technology Equipment – Replacement		641,353.24
Total Property		\$2,263,340.93
800 <u>Other Objects</u>		
810 Dues and Fees		12,307.85
880 Refunds of Prior Years' Receipts		(30,821.21)
Total Other Objects		(\$18,513.36)
Total 2000 Support Services		\$31,319,340.88

General Fund (10)

2100 Support Services – Students

	<u>Elementary</u>	<u>Secondary</u>	<u>Federal</u>	<u>Total</u>
100 Personnel Services – Salaries				
100 Personnel Services – Salaries	1,183,362.19	1,423,748.85	84,179.00	2,691,290.04
Total Personnel Services – Salaries	\$1,183,362.19	\$1,423,748.85	\$84,179.00	\$2,691,290.04
200 Personnel Services – Employee Benefits				
220 Social Security Contributions	79,365.97	114,340.71	3,219.85	196,926.53
230 PSERS Retirement Contributions	363,613.56	523,493.32	14,310.43	901,417.31
250 Unemployment Compensation	57.30	82.41		139.71
260 Workers' Compensation	10,556.30	15,117.94		25,674.24
270 Group Insurance – Self-Insurance	183,877.46	262,481.72	24,293.88	470,653.06
Total Personnel Services – Employee Benefits	\$637,470.59	\$915,516.10	\$41,824.16	\$1,594,810.85
300 Purchased Professional and Technical Services				
329 Professional Educational Services – Other	46,333.40	13,245.75		59,579.15
330 Other Professional Services			9,645.60	9,645.60
Total Purchased Professional and Technical Services	\$46,333.40	\$13,245.75	\$9,645.60	\$69,224.75
400 Purchased Property Services				
430 Repairs and Maintenance Services	281.45			281.45
Total Purchased Property Services	\$281.45			\$281.45
500 Other Purchased Services				
541 Advertising Related to Federal Grant Awards	16,839.38	1,750.00		18,589.38
550 Printing and Binding	1,307.89			1,307.89
580 Travel	1,015.63	40.78	349.00	2,616.28
Total Other Purchased Services	\$19,162.90	\$1,790.78	\$349.00	\$22,513.55
600 Supplies				
610 General Supplies	12,933.41	8,123.27		21,056.68
630 Food		781.01		781.01
640 Books and Periodicals	85.33	13.59		98.92
Total Supplies	\$13,018.74	\$8,917.87		\$21,936.61
Total 2100 Support Services – Students	\$1,899,629.27	\$2,363,219.35	\$135,997.76	\$4,400,057.25

General Fund (10)

	<u>Elementary</u>	<u>Secondary</u>	<u>Federal</u>	<u>Total</u>
2110 Supervision of Student Services				
100 Personnel Services – Salaries				
100 Personnel Services – Salaries	119,788.14	155,189.66		274,977.80
Total Personnel Services – Salaries	\$119,788.14	\$155,189.66		\$274,977.80
200 Personnel Services – Employee Benefits				
220 Social Security Contributions	8,768.67	11,360.11		20,128.78
230 PSERS Retirement Contributions	41,868.78	54,242.45		96,111.23
250 Unemployment Compensation	8.12	10.51		18.63
260 Workers' Compensation	1,143.21	1,481.07		2,624.28
270 Group Insurance – Self-Insurance	24,199.77	31,351.64		55,551.41
Total Personnel Services – Employee Benefits	\$75,988.55	\$98,445.78		\$174,434.33
300 Purchased Professional and Technical Services				
329 Professional Educational Services – Other	40,896.97	310.00		41,206.97
Total Purchased Professional and Technical Services	\$40,896.97	\$310.00		\$41,206.97
400 Purchased Property Services				
430 Repairs and Maintenance Services	281.45			281.45
Total Purchased Property Services	\$281.45			\$281.45
500 Other Purchased Services				
541 Advertising Related to Federal Grant Awards	16,839.38	1,750.00		18,589.38
550 Printing and Binding	1,307.89			1,307.89
580 Travel	662.83			662.83
Total Other Purchased Services	\$18,810.10	\$1,750.00		\$20,560.10
600 Supplies				
630 Food		781.01		781.01
640 Books and Periodicals	85.33			85.33
Total Supplies	\$85.33	\$781.01		\$866.34
Total 2110 Supervision of Student Services	\$255,850.54	\$256,476.45		\$512,326.99

General Fund (10)

	<u>Elementary</u>	<u>Secondary</u>	<u>Federal</u>	<u>Total</u>
2111 Supervision of Student Services – Head of Component				
100 Personnel Services – Salaries				
100 Personnel Services – Salaries	119,788.14	155,189.66		274,977.80
Total Personnel Services – Salaries	\$119,788.14	\$155,189.66		\$274,977.80
200 Personnel Services – Employee Benefits				
220 Social Security Contributions	8,768.67	11,360.11		20,128.78
230 PSERS Retirement Contributions	41,868.78	54,242.45		96,111.23
250 Unemployment Compensation	8.12	10.51		18.63
260 Workers' Compensation	1,143.21	1,481.07		2,624.28
270 Group Insurance – Self-Insurance	24,199.77	31,351.64		55,551.41
Total Personnel Services – Employee Benefits	\$75,988.55	\$98,445.78		\$174,434.33
300 Purchased Professional and Technical Services				
329 Professional Educational Services – Other	40,896.97	310.00		41,206.97
Total Purchased Professional and Technical Services	\$40,896.97	\$310.00		\$41,206.97
400 Purchased Property Services				
430 Repairs and Maintenance Services	281.45			281.45
Total Purchased Property Services	\$281.45			\$281.45
500 Other Purchased Services				
541 Advertising Related to Federal Grant Awards	16,839.38	1,750.00		18,589.38
550 Printing and Binding	1,307.89			1,307.89
580 Travel	662.83			662.83
Total Other Purchased Services	\$18,810.10	\$1,750.00		\$20,560.10
600 Supplies				
630 Food		781.01		781.01
640 Books and Periodicals	85.33			85.33
Total Supplies	\$85.33	\$781.01		\$866.34
Total 2111 Supervision of Student Services – Head of Component	\$255,850.54	\$256,476.45		\$512,326.99

General Fund (10)

	<u>Elementary</u>	<u>Secondary</u>	<u>Federal</u>	<u>Total</u>
2120 Guidance Services				
100 Personnel Services – Salaries				
100 Personnel Services – Salaries	642,319.17	1,082,269.67		1,724,588.84
Total Personnel Services – Salaries	\$642,319.17	\$1,082,269.67		\$1,724,588.84
200 Personnel Services – Employee Benefits				
220 Social Security Contributions	46,980.68	79,159.65		126,140.33
230 PSERS Retirement Contributions	213,994.95	360,568.78		574,563.73
250 Unemployment Compensation	32.95	55.53		88.48
260 Workers' Compensation	6,125.09	10,320.42		16,445.51
270 Group Insurance – Self-Insurance	103,610.87	174,578.16		278,189.03
Total Personnel Services – Employee Benefits	\$370,744.54	\$624,682.54		\$995,427.08
300 Purchased Professional and Technical Services				
329 Professional Educational Services – Other	836.43	12,935.75		13,772.18
330 Other Professional Services			9,645.60	9,645.60
Total Purchased Professional and Technical Services	\$836.43	\$12,935.75	\$9,645.60	\$23,417.78
500 Other Purchased Services				
580 Travel			349.00	349.00
Total Other Purchased Services			\$349.00	\$349.00
600 Supplies				
640 Books and Periodicals		13.59		13.59
Total Supplies		\$13.59		\$13.59
Total 2120 Guidance Services	\$1,013,900.14	\$1,719,901.55	\$9,994.60	\$2,743,796.29

General Fund (10)

2140 Psychological Services

	<u>Elementary</u>	<u>Secondary</u>	<u>Federal</u>	<u>Total</u>
100 Personnel Services – Salaries				
100 Personnel Services – Salaries	421,254.88	186,289.52	84,179.00	691,723.40
Total Personnel Services – Salaries	\$421,254.88	\$186,289.52	\$84,179.00	\$691,723.40
200 Personnel Services – Employee Benefits				
220 Social Security Contributions	23,616.62	23,820.95	3,219.85	50,657.42
230 PSERS Retirement Contributions	107,749.83	108,682.09	14,310.43	230,742.35
250 Unemployment Compensation	16.23	16.37		32.60
260 Workers' Compensation	3,288.00	3,316.45		6,604.45
270 Group Insurance – Self-Insurance	56,066.82	56,551.92	24,293.88	136,912.62
Total Personnel Services – Employee Benefits	\$190,737.50	\$192,387.78	\$41,824.16	\$424,949.44
300 Purchased Professional and Technical Services				
329 Professional Educational Services – Other	4,600.00			4,600.00
Total Purchased Professional and Technical Services	\$4,600.00			\$4,600.00
500 Other Purchased Services				
580 Travel	352.80	40.78		393.58
Total Other Purchased Services	\$352.80	\$40.78		\$393.58
600 Supplies				
610 General Supplies	12,933.41	8,123.27		21,056.68
Total Supplies	\$12,933.41	\$8,123.27		\$21,056.68
Total 2140 Psychological Services	\$629,878.59	\$386,841.35	\$126,003.16	\$1,142,723.10

General Fund (10)

2160 Social Work Services

Elementary

Secondary

Federal

Total

500 Other Purchased Services

580 Travel

1,210.87

Total Other Purchased Services

\$1,210.87

Total 2160 Social Work Services

\$1,210.87

General Fund (10)

	<u>Elementary</u>	<u>Secondary</u>	<u>Federal</u>	<u>Total</u>
2200 Support Services – Instructional Staff				
100 Personnel Services – Salaries				
100 Personnel Services – Salaries	1,209,851.18	927,043.23		2,136,894.41
Total Personnel Services – Salaries	\$1,209,851.18	\$927,043.23		\$2,136,894.41
200 Personnel Services – Employee Benefits				
220 Social Security Contributions	88,587.14	67,746.35		156,333.49
230 PSERS Retirement Contributions	405,959.65	308,702.94		714,662.59
240 Tuition Reimbursement	135,971.93	135,971.92		271,943.85
250 Unemployment Compensation	59.49	42.96		102.45
260 Workers' Compensation	11,549.52	8,832.42		20,381.94
270 Group Insurance – Self-Insurance	233,714.51	171,604.86		405,319.37
Total Personnel Services – Employee Benefits	\$875,842.24	\$692,901.45		\$1,568,743.69
300 Purchased Professional and Technical Services				
329 Professional Educational Services – Other	17,427.30	53,397.90	70,037.94	140,863.14
Total Purchased Professional and Technical Services	\$17,427.30	\$53,397.90	\$70,037.94	\$140,863.14
400 Purchased Property Services				
430 Repairs and Maintenance Services	279,446.18	126,237.66		405,683.84
Total Purchased Property Services	\$279,446.18	\$126,237.66		\$405,683.84
500 Other Purchased Services				
530 Communications	2,576.44	48,765.03		51,341.47
580 Travel	4,744.03	3,064.64		7,808.67
591 Services Purchased Locally	3,790.64			3,790.64
Total Other Purchased Services	\$11,111.11	\$51,829.67		\$62,940.78
600 Supplies				
610 General Supplies	52,762.13	22,647.58		75,409.71
630 Food	650.48	2,627.28		3,277.76
640 Books and Periodicals	16,656.58	39,047.31		55,703.89
Total Supplies	\$70,069.19	\$64,322.17		\$134,391.36
700 Property				
752 Capital Equipment – Original and Additional	10,569.61	7,217.98		17,787.59
756 Capitalized Technology Equipment – Original	204,966.76	498,769.06		703,735.82
762 Capitalized Equipment - Replacement	21,204.60	63.70		21,268.30
766 Capitalized Technology Equipment – Replacement	275,738.04	365,615.20		641,353.24
Total Property	\$512,479.01	\$871,665.94		\$1,384,144.95
800 Other Objects				
810 Dues and Fees	352.50	352.50		705.00
Total Other Objects	\$352.50	\$352.50		\$705.00
Total 2200 Support Services – Instructional Staff	\$2,976,578.71	\$2,787,750.52	\$70,037.94	\$5,834,367.17

General Fund (10)

	<u>Elementary</u>	<u>Secondary</u>	<u>Federal</u>	<u>Total</u>
2220 Technology Support Services				
100 Personnel Services – Salaries				
100 Personnel Services – Salaries	478,354.59	402,128.16		880,482.75
Total Personnel Services – Salaries	\$478,354.59	\$402,128.16		\$880,482.75
200 Personnel Services – Employee Benefits				
220 Social Security Contributions	34,994.23	29,417.85		64,412.08
230 PSERS Retirement Contributions	159,397.20	133,997.05		293,394.25
250 Unemployment Compensation	25.30	21.27		46.57
260 Workers' Compensation	4,562.36	3,835.35		8,397.71
270 Group Insurance – Self-Insurance	100,270.94	84,292.64		184,563.58
Total Personnel Services – Employee Benefits	\$299,250.03	\$251,564.16		\$550,814.19
600 Supplies				
610 General Supplies	17,167.43	6,583.40		23,750.83
Total Supplies	\$17,167.43	\$6,583.40		\$23,750.83
700 Property				
752 Capital Equipment – Original and Additional	10,569.61	7,217.98		17,787.59
762 Capitalized Equipment - Replacement	21,204.60	63.70		21,268.30
Total Property	\$31,774.21	\$7,281.68		\$39,055.89
Total 2220 Technology Support Services	\$826,546.26	\$667,557.40		\$1,494,103.66

General Fund (10)

	<u>Elementary</u>	<u>Secondary</u>	<u>Federal</u>	<u>Total</u>
2240 Computer-Assisted Instruction Support Services				
300 <u>Purchased Professional and Technical Services</u>				
329 Professional Educational Services – Other	9,020.24	25,473.50		34,493.74
Total Purchased Professional and Technical Services	\$9,020.24	\$25,473.50		\$34,493.74
400 <u>Purchased Property Services</u>				
430 Repairs and Maintenance Services	279,446.18	126,237.66		405,683.84
Total Purchased Property Services	\$279,446.18	\$126,237.66		\$405,683.84
500 <u>Other Purchased Services</u>				
530 Communications	1,656.21	48,765.03		50,421.24
580 Travel	2,832.93	332.42		3,165.35
Total Other Purchased Services	\$4,489.14	\$49,097.45		\$53,586.59
600 <u>Supplies</u>				
610 General Supplies	12,490.97	(1,209.35)		11,281.62
630 Food		2,016.73		2,016.73
Total Supplies	\$12,490.97	\$807.38		\$13,298.35
700 <u>Property</u>				
756 Capitalized Technology Equipment – Original	146,368.39	420,145.50		566,513.89
766 Capitalized Technology Equipment – Replacement	275,738.04	365,615.20		641,353.24
Total Property	\$422,106.43	\$785,760.70		\$1,207,867.13
Total 2240 Computer-Assisted Instruction Support Services	\$727,552.96	\$987,376.69		\$1,714,929.65

General Fund (10)

	<u>Elementary</u>	<u>Secondary</u>	<u>Federal</u>	<u>Total</u>
2250 School Library Services				
100 Personnel Services – Salaries				
100 Personnel Services – Salaries	457,563.38	224,298.08		681,861.46
Total Personnel Services – Salaries	\$457,563.38	\$224,298.08		\$681,861.46
200 Personnel Services – Employee Benefits				
220 Social Security Contributions	33,543.43	16,443.03		49,986.46
230 PSERS Retirement Contributions	152,788.88	74,897.28		227,686.16
250 Unemployment Compensation	25.00	12.25		37.25
260 Workers' Compensation	4,373.22	2,143.75		6,516.97
270 Group Insurance – Self-Insurance	92,613.13	45,399.06		138,012.19
Total Personnel Services – Employee Benefits	\$283,343.66	\$138,895.37		\$422,239.03
600 Supplies				
640 Books and Periodicals	15,965.78	39,047.31		55,013.09
Total Supplies	\$15,965.78	\$39,047.31		\$55,013.09
Total 2250 School Library Services	\$756,872.82	\$402,240.76		\$1,159,113.58

General Fund (10)

	<u>Elementary</u>	<u>Secondary</u>	<u>Federal</u>	<u>Total</u>
2260 Instruction and Curriculum Development Services				
100 Personnel Services – Salaries				
100 Personnel Services – Salaries	264,235.55	271,242.37		535,477.92
Total Personnel Services – Salaries	\$264,235.55	\$271,242.37		\$535,477.92
200 Personnel Services – Employee Benefits				
220 Social Security Contributions	19,368.75	19,882.36		39,251.11
230 PSERS Retirement Contributions	88,223.83	90,563.29		178,787.12
250 Unemployment Compensation	9.19	9.44		18.63
260 Workers' Compensation	2,525.19	2,592.16		5,117.35
270 Group Insurance – Self-Insurance	40,830.44	41,913.16		82,743.60
Total Personnel Services – Employee Benefits	\$150,957.40	\$154,960.41		\$305,917.81
300 Purchased Professional and Technical Services				
329 Professional Educational Services – Other	350.00	3,200.00		3,550.00
Total Purchased Professional and Technical Services	\$350.00	\$3,200.00		\$3,550.00
500 Other Purchased Services				
530 Communications	920.23			920.23
580 Travel	1,611.10	2,136.25		3,747.35
Total Other Purchased Services	\$2,531.33	\$2,136.25		\$4,667.58
600 Supplies				
610 General Supplies	624.32			624.32
630 Food	574.02	283.42		857.44
640 Books and Periodicals	690.80			690.80
Total Supplies	\$1,889.14	\$283.42		\$2,172.56
700 Property				
756 Capitalized Technology Equipment – Original	58,598.37	78,623.56		137,221.93
Total Property	\$58,598.37	\$78,623.56		\$137,221.93
800 Other Objects				
810 Dues and Fees	352.50	352.50		705.00
Total Other Objects	\$352.50	\$352.50		\$705.00
Total 2260 Instruction and Curriculum Development Services	\$478,914.29	\$510,798.51		\$989,712.80

General Fund (10)

	<u>Elementary</u>	<u>Secondary</u>	<u>Federal</u>	<u>Total</u>
2270 Instructional Staff Professional Development Services				
100 Personnel Services – Salaries				
100 Personnel Services – Salaries	9,090.00	450.00		9,540.00
Total Personnel Services – Salaries	\$9,090.00	\$450.00		\$9,540.00
200 Personnel Services – Employee Benefits				
220 Social Security Contributions	639.31	31.65		670.96
230 PSERS Retirement Contributions	5,361.09	265.40		5,626.49
240 Tuition Reimbursement	135,971.93	135,971.92		271,943.85
260 Workers' Compensation	83.35	4.13		87.48
Total Personnel Services – Employee Benefits	\$142,055.68	\$136,273.10		\$278,328.78
300 Purchased Professional and Technical Services				
329 Professional Educational Services – Other	8,057.06	24,724.40	70,037.94	102,819.40
Total Purchased Professional and Technical Services	\$8,057.06	\$24,724.40	\$70,037.94	\$102,819.40
500 Other Purchased Services				
580 Travel	300.00	595.97		895.97
591 Services Purchased Locally	3,790.64			3,790.64
Total Other Purchased Services	\$4,090.64	\$595.97		\$4,686.61
600 Supplies				
630 Food		250.68		250.68
Total Supplies		\$250.68		\$250.68
Total 2270 Instructional Staff Professional Development Services	\$163,293.38	\$162,294.15	\$70,037.94	\$395,625.47

General Fund (10)

2290 Other Instructional Staff Services	<u>Elementary</u>	<u>Secondary</u>	<u>Federal</u>	<u>Total</u>
100 Personnel Services – Salaries				
100 Personnel Services – Salaries	607.66	28,924.62		29,532.28
Total Personnel Services – Salaries	\$607.66	\$28,924.62		\$29,532.28
200 Personnel Services – Employee Benefits				
220 Social Security Contributions	41.42	1,971.46		2,012.88
230 PSERS Retirement Contributions	188.65	8,979.92		9,168.57
260 Workers’ Compensation	5.40	257.03		262.43
Total Personnel Services – Employee Benefits	\$235.47	\$11,208.41		\$11,443.88
600 Supplies				
610 General Supplies	22,479.41	17,273.53		39,752.94
630 Food	76.46	76.45		152.91
Total Supplies	\$22,555.87	\$17,349.98		\$39,905.85
Total 2290 Other Instructional Staff Services	\$23,399.00	\$57,483.01		\$80,882.01

General Fund (10)

2300 Support Services – Administration

	<u>Elementary</u>	<u>Secondary</u>	<u>Federal</u>	<u>Total</u>
100 Personnel Services – Salaries				
100 Personnel Services – Salaries	1,230,625.39	987,521.84		2,226,165.52
Total Personnel Services – Salaries	\$1,230,625.39	\$987,521.84		\$2,226,165.52
200 Personnel Services – Employee Benefits				
220 Social Security Contributions	40,574.30	121,462.34		199,317.84
230 PSERS Retirement Contributions	184,814.20	553,255.70		907,688.45
250 Unemployment Compensation	31.48	94.25		144.36
260 Workers' Compensation	5,289.86	15,835.62		25,980.40
270 Group Insurance – Self-Insurance	109,116.93	326,650.03		503,440.46
Total Personnel Services – Employee Benefits	\$339,826.77	\$1,017,297.94		\$1,636,571.51
300 Purchased Professional and Technical Services				
329 Professional Educational Services – Other	8,513.81	2,452.55		27,698.54
330 Other Professional Services				254,012.39
Total Purchased Professional and Technical Services	\$8,513.81	\$2,452.55		\$281,710.93
400 Purchased Property Services				
430 Repairs and Maintenance Services		19,239.71		19,239.71
Total Purchased Property Services		\$19,239.71		\$19,239.71
500 Other Purchased Services				
520 Insurance – General				4,694.13
530 Communications	27,372.05	10,184.20		37,885.53
541 Advertising Related to Federal Grant Awards				1,198.30
550 Printing and Binding	1,271.72	2,468.63		3,740.35
580 Travel				14,547.54
Total Other Purchased Services	\$28,643.77	\$12,652.83		\$62,065.85
600 Supplies				
610 General Supplies	15,348.14	11,404.04		28,695.18
630 Food	3,360.54	6,038.29		16,198.82
640 Books and Periodicals				5,240.74
Total Supplies	\$18,708.68	\$17,442.33		\$50,134.74
800 Other Objects				
810 Dues and Fees				25,730.09
Total Other Objects				\$25,730.09
Total 2300 Support Services – Administration	\$1,626,318.42	\$2,056,607.20		\$4,801,618.35

General Fund (10)

2310 Board Services

Elementary

Secondary

Federal

Total

300 Purchased Professional and Technical Services

329 Professional Educational Services – Other

9,810.00

Total Purchased Professional and Technical Services

\$9,810.00

500 Other Purchased Services

541 Advertising Related to Federal Grant Awards

1,198.30

580 Travel

2,056.86

Total Other Purchased Services

\$3,255.16

600 Supplies

630 Food

3,255.21

Total Supplies

\$3,255.21

800 Other Objects

810 Dues and Fees

18,220.09

Total Other Objects

\$18,220.09

Total 2310 Board Services

\$34,540.46

General Fund (10)

	<u>Elementary</u>	<u>Secondary</u>	<u>Federal</u>	<u>Total</u>
2330 Tax Assessment and Collection Services				
100 <u>Personnel Services – Salaries</u>				
100 Personnel Services – Salaries				561.75
Total Personnel Services – Salaries				\$561.75
200 <u>Personnel Services – Employee Benefits</u>				
220 Social Security Contributions				42.97
Total Personnel Services – Employee Benefits				\$42.97
300 <u>Purchased Professional and Technical Services</u>				
329 Professional Educational Services – Other				6,297.18
Total Purchased Professional and Technical Services				\$6,297.18
500 <u>Other Purchased Services</u>				
520 Insurance – General				4,694.13
530 Communications				329.28
Total Other Purchased Services				\$5,023.41
600 <u>Supplies</u>				
610 General Supplies				1,943.00
Total Supplies				\$1,943.00
Total 2330 Tax Assessment and Collection Services				\$13,868.31

General Fund (10)

2350 Legal and Accounting Services

Elementary

Secondary

Federal

Total

300 Purchased Professional and Technical Services

330 Other Professional Services

179,562.39

Total Purchased Professional and Technical Services

\$179,562.39

Total 2350 Legal and Accounting Services

\$179,562.39

General Fund (10)

	<u>Elementary</u>	<u>Secondary</u>	<u>Federal</u>	<u>Total</u>
2360 Office of the Superintendent / Executive Director Services				
100 Personnel Services – Salaries				
100 Personnel Services – Salaries				507,456.54
Total Personnel Services – Salaries				\$507,456.54
200 Personnel Services – Employee Benefits				
220 Social Security Contributions				37,238.23
230 PSERS Retirement Contributions				169,618.55
250 Unemployment Compensation				18.63
260 Workers' Compensation				4,854.92
270 Group Insurance – Self-Insurance				67,673.50
Total Personnel Services – Employee Benefits				\$279,403.83
300 Purchased Professional and Technical Services				
329 Professional Educational Services – Other				625.00
330 Other Professional Services				74,450.00
Total Purchased Professional and Technical Services				\$75,075.00
500 Other Purchased Services				
530 Communications	4,855.67	4,855.67		9,711.34
580 Travel				12,490.68
Total Other Purchased Services	\$4,855.67	\$4,855.67		\$22,202.02
600 Supplies				
630 Food				3,544.78
640 Books and Periodicals				5,240.74
Total Supplies				\$8,785.52
800 Other Objects				
810 Dues and Fees				7,510.00
Total Other Objects				\$7,510.00
Total 2360 Office of the Superintendent / Executive Director Services	\$4,855.67	\$4,855.67		\$900,432.91

General Fund (10)

	<u>Elementary</u>	<u>Secondary</u>	<u>Federal</u>	<u>Total</u>
2380 Office of the Principal Services				
100 Personnel Services – Salaries				
100 Personnel Services – Salaries	1,230,625.39	987,521.84		2,218,147.23
Total Personnel Services – Salaries	\$1,230,625.39	\$987,521.84		\$2,218,147.23
200 Personnel Services – Employee Benefits				
220 Social Security Contributions	40,574.30	121,462.34		162,036.64
230 PSERS Retirement Contributions	184,814.20	553,255.70		738,069.90
250 Unemployment Compensation	31.48	94.25		125.73
260 Workers' Compensation	5,289.86	15,835.62		21,125.48
270 Group Insurance – Self-Insurance	109,116.93	326,650.03		435,766.96
Total Personnel Services – Employee Benefits	\$339,826.77	\$1,017,297.94		\$1,357,124.71
300 Purchased Professional and Technical Services				
329 Professional Educational Services – Other	8,513.81	2,452.55		10,966.36
Total Purchased Professional and Technical Services	\$8,513.81	\$2,452.55		\$10,966.36
400 Purchased Property Services				
430 Repairs and Maintenance Services		19,239.71		19,239.71
Total Purchased Property Services		\$19,239.71		\$19,239.71
500 Other Purchased Services				
530 Communications	22,516.38	5,328.53		27,844.91
550 Printing and Binding	1,271.72	2,468.63		3,740.35
Total Other Purchased Services	\$23,788.10	\$7,797.16		\$31,585.26
600 Supplies				
610 General Supplies	15,348.14	11,404.04		26,752.18
630 Food	3,360.54	6,038.29		9,398.83
Total Supplies	\$18,708.68	\$17,442.33		\$36,151.01
Total 2380 Office of the Principal Services	\$1,621,462.75	\$2,051,751.53		\$3,673,214.28

General Fund (10)

	<u>Elementary</u>	<u>Secondary</u>	<u>Federal</u>	<u>Total</u>
2400 Support Services – Pupil Health				
100 Personnel Services – Salaries				
100 Personnel Services – Salaries				588,116.47
Total Personnel Services – Salaries				\$588,116.47
200 Personnel Services – Employee Benefits				
220 Social Security Contributions				42,941.39
230 PSERS Retirement Contributions				196,467.35
250 Unemployment Compensation				37.25
260 Workers' Compensation				5,598.47
270 Group Insurance – Self-Insurance				142,090.24
Total Personnel Services – Employee Benefits				\$387,134.70
300 Purchased Professional and Technical Services				
329 Professional Educational Services – Other				4,299.50
330 Other Professional Services				5,800.00
390 Other Purchased Professional and Technical Services				2,780.00
Total Purchased Professional and Technical Services				\$12,879.50
400 Purchased Property Services				
410 Cleaning Services				35.00
430 Repairs and Maintenance Services				293.00
Total Purchased Property Services				\$328.00
500 Other Purchased Services				
580 Travel				420.00
Total Other Purchased Services				\$420.00
600 Supplies				
610 General Supplies				8,327.20
650 Supplies & Fees – Technology Related				12,212.00
Total Supplies				\$20,539.20
700 Property				
762 Capitalized Equipment - Replacement				9,131.44
Total Property				\$9,131.44
Total 2400 Support Services – Pupil Health				\$1,018,549.31

General Fund (10)

2440 Nursing Services

	<u>Elementary</u>	<u>Secondary</u>	<u>Federal</u>	<u>Total</u>
100 Personnel Services – Salaries				
100 Personnel Services – Salaries				588,116.47
Total Personnel Services – Salaries				\$588,116.47
200 Personnel Services – Employee Benefits				
220 Social Security Contributions				42,941.39
230 PSERS Retirement Contributions				196,467.35
250 Unemployment Compensation				37.25
260 Workers' Compensation				5,598.47
270 Group Insurance – Self-Insurance				142,090.24
Total Personnel Services – Employee Benefits				\$387,134.70
300 Purchased Professional and Technical Services				
329 Professional Educational Services – Other				4,299.50
330 Other Professional Services				5,800.00
390 Other Purchased Professional and Technical Services				2,780.00
Total Purchased Professional and Technical Services				\$12,879.50
400 Purchased Property Services				
410 Cleaning Services				35.00
430 Repairs and Maintenance Services				293.00
Total Purchased Property Services				\$328.00
500 Other Purchased Services				
580 Travel				420.00
Total Other Purchased Services				\$420.00
600 Supplies				
610 General Supplies				8,327.20
650 Supplies & Fees – Technology Related				12,212.00
Total Supplies				\$20,539.20
700 Property				
762 Capitalized Equipment - Replacement				9,131.44
Total Property				\$9,131.44
Total 2440 Nursing Services				\$1,018,549.31

General Fund (10)

2500 Support Services – Business

Elementary Secondary Federal Total

100	<u>Personnel Services – Salaries</u>			
	100 Personnel Services – Salaries			497,456.78
Total Personnel Services – Salaries				\$497,456.78
200	<u>Personnel Services – Employee Benefits</u>			
	220 Social Security Contributions			36,231.78
	230 PSERS Retirement Contributions			165,034.27
	250 Unemployment Compensation			27.93
	260 Workers' Compensation			4,723.70
	270 Group Insurance – Self-Insurance			64,716.89
Total Personnel Services – Employee Benefits				\$270,734.57
300	<u>Purchased Professional and Technical Services</u>			
	329 Professional Educational Services – Other			87,496.77
Total Purchased Professional and Technical Services				\$87,496.77
400	<u>Purchased Property Services</u>			
	430 Repairs and Maintenance Services			7,808.12
Total Purchased Property Services				\$7,808.12
500	<u>Other Purchased Services</u>			
	530 Communications			20,270.13
	580 Travel			1,357.43
	591 Services Purchased Locally			27,728.98
Total Other Purchased Services				\$49,356.54
600	<u>Supplies</u>			
	610 General Supplies			25,489.80
	630 Food			28.36
Total Supplies				\$25,518.16
800	<u>Other Objects</u>			
	810 Dues and Fees			(15,475.24)
Total Other Objects				(\$15,475.24)
Total 2500 Support Services – Business				\$922,895.70

General Fund (10)

2510 Fiscal Services

Elementary Secondary Federal Total

100	<u>Personnel Services – Salaries</u>				
	100 Personnel Services – Salaries				497,456.78
Total Personnel Services – Salaries					\$497,456.78
200	<u>Personnel Services – Employee Benefits</u>				
	220 Social Security Contributions				36,231.78
	230 PSERS Retirement Contributions				165,034.27
	250 Unemployment Compensation				27.93
	260 Workers' Compensation				4,723.70
	270 Group Insurance – Self-Insurance				64,716.89
Total Personnel Services – Employee Benefits					\$270,734.57
300	<u>Purchased Professional and Technical Services</u>				
	329 Professional Educational Services – Other				87,496.77
Total Purchased Professional and Technical Services					\$87,496.77
400	<u>Purchased Property Services</u>				
	430 Repairs and Maintenance Services				7,808.12
Total Purchased Property Services					\$7,808.12
500	<u>Other Purchased Services</u>				
	530 Communications				20,270.13
	580 Travel				1,357.43
Total Other Purchased Services					\$21,627.56
600	<u>Supplies</u>				
	610 General Supplies				25,489.80
	630 Food				28.36
Total Supplies					\$25,518.16
800	<u>Other Objects</u>				
	810 Dues and Fees				(15,475.24)
Total Other Objects					(\$15,475.24)
Total 2510 Fiscal Services					\$895,166.72

General Fund (10)

	<u>Elementary</u>	<u>Secondary</u>	<u>Federal</u>	<u>Total</u>
2511 Supervision of Fiscal Services - Head of Component				
100 Personnel Services – Salaries				
100 Personnel Services – Salaries				307,539.08
Total Personnel Services – Salaries				\$307,539.08
200 Personnel Services – Employee Benefits				
220 Social Security Contributions				22,399.32
230 PSERS Retirement Contributions				100,462.24
250 Unemployment Compensation				17.27
260 Workers' Compensation				2,920.30
270 Group Insurance – Self-Insurance				40,009.45
Total Personnel Services – Employee Benefits				\$165,808.58
300 Purchased Professional and Technical Services				
329 Professional Educational Services – Other				20,064.69
Total Purchased Professional and Technical Services				\$20,064.69
400 Purchased Property Services				
430 Repairs and Maintenance Services				7,808.12
Total Purchased Property Services				\$7,808.12
500 Other Purchased Services				
530 Communications				20,270.13
580 Travel				1,045.15
Total Other Purchased Services				\$21,315.28
600 Supplies				
610 General Supplies				6,372.45
630 Food				28.36
Total Supplies				\$6,400.81
800 Other Objects				
810 Dues and Fees				(3,868.81)
Total Other Objects				(\$3,868.81)
Total 2511 Supervision of Fiscal Services - Head of Component				\$525,067.75

General Fund (10)

2514 Payroll Services

Elementary Secondary Federal Total

100	<u>Personnel Services – Salaries</u>				
	100 Personnel Services – Salaries				67,908.80
Total Personnel Services – Salaries					\$67,908.80
200	<u>Personnel Services – Employee Benefits</u>				
	220 Social Security Contributions				4,946.07
	230 PSERS Retirement Contributions				23,089.00
	250 Unemployment Compensation				3.81
	260 Workers' Compensation				644.84
	270 Group Insurance – Self-Insurance				8,834.63
Total Personnel Services – Employee Benefits					\$37,518.35
300	<u>Purchased Professional and Technical Services</u>				
	329 Professional Educational Services – Other				44,773.08
Total Purchased Professional and Technical Services					\$44,773.08
600	<u>Supplies</u>				
	610 General Supplies				6,372.45
Total Supplies					\$6,372.45
800	<u>Other Objects</u>				
	810 Dues and Fees				(3,868.81)
Total Other Objects					(\$3,868.81)
Total 2514 Payroll Services					\$152,703.87

General Fund (10)

2515 Financial Accounting Services

Elementary Secondary Federal Total

100 Personnel Services – Salaries

100 Personnel Services – Salaries 72,467.20

Total Personnel Services – Salaries \$72,467.20

200 Personnel Services – Employee Benefits

220 Social Security Contributions 5,278.07

230 PSERS Retirement Contributions 24,638.85

250 Unemployment Compensation 4.07

260 Workers' Compensation 688.13

270 Group Insurance – Self-Insurance 9,427.66

Total Personnel Services – Employee Benefits \$40,036.78

300 Purchased Professional and Technical Services

329 Professional Educational Services – Other 21,500.00

Total Purchased Professional and Technical Services \$21,500.00

500 Other Purchased Services

580 Travel 16.08

Total Other Purchased Services \$16.08

600 Supplies

610 General Supplies 6,372.45

Total Supplies \$6,372.45

800 Other Objects

810 Dues and Fees (3,868.81)

Total Other Objects (\$3,868.81)

Total 2515 Financial Accounting Services \$136,523.70

General Fund (10)

2590 Other Support Services – Business

Elementary

Secondary

Federal

Total

500 Other Purchased Services

591 Services Purchased Locally

27,728.98

Total Other Purchased Services

\$27,728.98

Total 2590 Other Support Services – Business

\$27,728.98

General Fund (10)

	<u>Elementary</u>	<u>Secondary</u>	<u>Federal</u>	<u>Total</u>
2600 Operation and Maintenance of Plant Services				
100 Personnel Services – Salaries				
100 Personnel Services – Salaries				2,992,045.51
Total Personnel Services – Salaries				\$2,992,045.51
200 Personnel Services – Employee Benefits				
220 Social Security Contributions				218,732.69
230 PSERS Retirement Contributions				996,317.96
250 Unemployment Compensation				232.83
260 Workers' Compensation				28,517.22
270 Group Insurance – Self-Insurance				753,719.24
Total Personnel Services – Employee Benefits				\$1,997,519.94
300 Purchased Professional and Technical Services				
329 Professional Educational Services – Other				148,268.80
330 Other Professional Services				15,397.50
340 Technical Services				19,288.99
350 Security / Safety Services				5,800.00
Total Purchased Professional and Technical Services				\$188,755.29
400 Purchased Property Services				
410 Cleaning Services				54,136.15
420 Utility Services				144,014.70
430 Repairs and Maintenance Services				283,214.34
Total Purchased Property Services				\$481,365.19
500 Other Purchased Services				
521 Fire Insurance				203,446.00
523 General Property and Liability Insurance				116,062.00
529 Other Insurance				176,939.00
530 Communications				2,745.43
580 Travel				10,103.92
Total Other Purchased Services				\$509,296.35
600 Supplies				
610 General Supplies	295,256.10	295,256.12		590,512.22
620 Energy				1,342,118.55
Total Supplies	\$295,256.10	\$295,256.12		\$1,932,630.77
700 Property				
752 Capital Equipment – Original and Additional				13,254.70
762 Capitalized Equipment - Replacement				134,173.06
Total Property				\$147,427.76
Total 2600 Operation and Maintenance of Plant Services	\$295,256.10	\$295,256.12		\$8,249,040.81

General Fund (10)

2611 Supervision of Operation and Maintenance of Plant Services – Head of Component	<u>Elementary</u>	<u>Secondary</u>	<u>Federal</u>	<u>Total</u>
100 Personnel Services – Salaries				
100 Personnel Services – Salaries				223,732.80
Total Personnel Services – Salaries				\$223,732.80
200 Personnel Services – Employee Benefits				
220 Social Security Contributions				16,355.93
230 PSERS Retirement Contributions				55,091.64
250 Unemployment Compensation				17.41
260 Workers' Compensation				2,132.40
270 Group Insurance – Self-Insurance				56,360.01
Total Personnel Services – Employee Benefits				\$129,957.39
500 Other Purchased Services				
530 Communications				2,745.43
580 Travel				3,703.82
Total Other Purchased Services				\$6,449.25
Total 2611 Supervision of Operation and Maintenance of Plant Services – Head of Component				\$360,139.44

General Fund (10)

	<u>Elementary</u>	<u>Secondary</u>	<u>Federal</u>	<u>Total</u>
2620 Operation of Buildings Services				
100 Personnel Services – Salaries				
100 Personnel Services – Salaries				2,339,639.87
Total Personnel Services – Salaries				\$2,339,639.87
200 Personnel Services – Employee Benefits				
220 Social Security Contributions				171,038.75
230 PSERS Retirement Contributions				795,477.56
250 Unemployment Compensation				182.06
260 Workers' Compensation				22,299.13
270 Group Insurance – Self-Insurance				589,373.25
Total Personnel Services – Employee Benefits				\$1,578,370.75
300 Purchased Professional and Technical Services				
329 Professional Educational Services – Other				101,190.93
330 Other Professional Services				15,397.50
340 Technical Services				19,288.99
350 Security / Safety Services				5,800.00
Total Purchased Professional and Technical Services				\$141,677.42
400 Purchased Property Services				
410 Cleaning Services				54,136.15
420 Utility Services				144,014.70
430 Repairs and Maintenance Services				283,214.34
Total Purchased Property Services				\$481,365.19
500 Other Purchased Services				
521 Fire Insurance				203,446.00
523 General Property and Liability Insurance				116,062.00
529 Other Insurance				176,939.00
580 Travel				6,400.10
Total Other Purchased Services				\$502,847.10
600 Supplies				
610 General Supplies	230,432.87	230,432.88		460,865.75
620 Energy				1,342,118.55
Total Supplies	\$230,432.87	\$230,432.88		\$1,802,984.30
700 Property				
752 Capital Equipment – Original and Additional				11,013.32
762 Capitalized Equipment - Replacement				134,173.06
Total Property				\$145,186.38
Total 2620 Operation of Buildings Services	\$230,432.87	\$230,432.88		\$6,992,071.01

General Fund (10)

	<u>Elementary</u>	<u>Secondary</u>	<u>Federal</u>	<u>Total</u>
2630 Care and Upkeep of Grounds Services				
100 Personnel Services – Salaries				
100 Personnel Services – Salaries				350,028.80
Total Personnel Services – Salaries				\$350,028.80
200 Personnel Services – Employee Benefits				
220 Social Security Contributions				25,588.76
230 PSERS Retirement Contributions				119,009.79
250 Unemployment Compensation				27.24
260 Workers' Compensation				3,336.13
270 Group Insurance – Self-Insurance				88,174.94
Total Personnel Services – Employee Benefits				\$236,136.86
600 Supplies				
610 General Supplies	64,823.23	64,823.24		129,646.47
Total Supplies	\$64,823.23	\$64,823.24		\$129,646.47
700 Property				
752 Capital Equipment – Original and Additional				2,241.38
Total Property				\$2,241.38
Total 2630 Care and Upkeep of Grounds Services	\$64,823.23	\$64,823.24		\$718,053.51

General Fund (10)

2660 Safety and Security Services

Elementary

Secondary

Federal

Total

100 Personnel Services – Salaries

100 Personnel Services – Salaries

78,644.04

Total Personnel Services – Salaries

\$78,644.04

200 Personnel Services – Employee Benefits

220 Social Security Contributions

5,749.25

230 PSERS Retirement Contributions

26,738.97

250 Unemployment Compensation

6.12

260 Workers' Compensation

749.56

270 Group Insurance – Self-Insurance

19,811.04

Total Personnel Services – Employee Benefits

\$53,054.94

300 Purchased Professional and Technical Services

329 Professional Educational Services – Other

47,077.87

Total Purchased Professional and Technical Services

\$47,077.87

Total 2660 Safety and Security Services

\$178,776.85

General Fund (10)

	<u>Elementary</u>	<u>Secondary</u>	<u>Federal</u>	<u>Total</u>
2700 Student Transportation Services				
100 Personnel Services – Salaries				
100 Personnel Services – Salaries				1,789,828.34
Total Personnel Services – Salaries				\$1,789,828.34
200 Personnel Services – Employee Benefits				
220 Social Security Contributions				130,837.02
230 PSERS Retirement Contributions				595,957.05
240 Tuition Reimbursement				65.38
250 Unemployment Compensation				4,621.12
260 Workers' Compensation				237,674.73
270 Group Insurance – Self-Insurance				640,532.38
Total Personnel Services – Employee Benefits				\$1,609,687.68
300 Purchased Professional and Technical Services				
330 Other Professional Services				17,038.25
340 Technical Services				(598.04)
Total Purchased Professional and Technical Services				\$16,440.21
400 Purchased Property Services				
430 Repairs and Maintenance Services				22,319.02
440 Rentals				63,746.74
Total Purchased Property Services				\$86,065.76
500 Other Purchased Services				
513 Contracted Carriers				5,163.71
516 Student Transportation Services From the IU				3,969.73
522 Automotive Liability Insurance				115,721.00
530 Communications				8,767.79
580 Travel				4,023.29
Total Other Purchased Services				\$137,645.52
600 Supplies				
610 General Supplies				167,357.78
620 Energy				269,839.90
630 Food				981.32
Total Supplies				\$438,179.00
700 Property				
762 Capitalized Equipment - Replacement				250,827.88
Total Property				\$250,827.88
Total 2700 Student Transportation Services				\$4,328,674.39

General Fund (10)

	<u>Elementary</u>	<u>Secondary</u>	<u>Federal</u>	<u>Total</u>
2710 Supervision of Student Transportation Services				
100 Personnel Services – Salaries				
100 Personnel Services – Salaries				125,287.98
Total Personnel Services – Salaries				\$125,287.98
200 Personnel Services – Employee Benefits				
220 Social Security Contributions				9,158.60
230 PSERS Retirement Contributions				41,716.99
250 Unemployment Compensation				17.60
260 Workers' Compensation				1,194.05
270 Group Insurance – Self-Insurance				60,590.90
Total Personnel Services – Employee Benefits				\$112,678.14
500 Other Purchased Services				
522 Automotive Liability Insurance				115,721.00
530 Communications				8,767.79
580 Travel				4,023.29
Total Other Purchased Services				\$128,512.08
600 Supplies				
630 Food				981.32
Total Supplies				\$981.32
Total 2710 Supervision of Student Transportation Services				\$367,459.52

General Fund (10)

2711 Supervision of Student Transportation Services – Head of Component	<u>Elementary</u>	<u>Secondary</u>	<u>Federal</u>	<u>Total</u>
100 Personnel Services – Salaries				
100 Personnel Services – Salaries				125,287.98
Total Personnel Services – Salaries				\$125,287.98
200 Personnel Services – Employee Benefits				
220 Social Security Contributions				9,158.60
230 PSERS Retirement Contributions				41,716.99
250 Unemployment Compensation				17.60
260 Workers' Compensation				1,194.05
270 Group Insurance – Self-Insurance				60,590.90
Total Personnel Services – Employee Benefits				\$112,678.14
500 Other Purchased Services				
522 Automotive Liability Insurance				115,721.00
530 Communications				8,767.79
580 Travel				4,023.29
Total Other Purchased Services				\$128,512.08
600 Supplies				
630 Food				981.32
Total Supplies				\$981.32
Total 2711 Supervision of Student Transportation Services – Head of Component				\$367,459.52

General Fund (10)

	<u>Elementary</u>	<u>Secondary</u>	<u>Federal</u>	<u>Total</u>
2720 Vehicle Operation Services				
100 Personnel Services – Salaries				
100 Personnel Services – Salaries				1,020,202.15
Total Personnel Services – Salaries				\$1,020,202.15
200 Personnel Services – Employee Benefits				
220 Social Security Contributions				74,577.11
230 PSERS Retirement Contributions				339,695.52
250 Unemployment Compensation				143.33
260 Workers' Compensation				9,722.97
270 Group Insurance – Self-Insurance				493,383.05
Total Personnel Services – Employee Benefits				\$917,521.98
300 Purchased Professional and Technical Services				
330 Other Professional Services				17,038.25
340 Technical Services				(598.04)
Total Purchased Professional and Technical Services				\$16,440.21
500 Other Purchased Services				
513 Contracted Carriers				5,163.71
516 Student Transportation Services From the IU				3,969.73
Total Other Purchased Services				\$9,133.44
Total 2720 Vehicle Operation Services				\$1,963,297.78

General Fund (10)

2730 Monitoring Services

Elementary

Secondary

Federal

Total

100 Personnel Services – Salaries

100 Personnel Services – Salaries

35,796.57

Total Personnel Services – Salaries

\$35,796.57

200 Personnel Services – Employee Benefits

220 Social Security Contributions

2,616.73

230 PSERS Retirement Contributions

11,919.14

250 Unemployment Compensation

5.03

260 Workers' Compensation

341.16

270 Group Insurance – Self-Insurance

17,311.69

Total Personnel Services – Employee Benefits

\$32,193.75

Total 2730 Monitoring Services

\$67,990.32

General Fund (10)

2740 Vehicle Servicing and Maintenance Services

Elementary

Secondary

Federal

Total

100 Personnel Services – Salaries

100 Personnel Services – Salaries

143,186.27

Total Personnel Services – Salaries

\$143,186.27

200 Personnel Services – Employee Benefits

220 Social Security Contributions

10,466.96

230 PSERS Retirement Contributions

47,676.56

250 Unemployment Compensation

20.12

260 Workers' Compensation

1,364.63

270 Group Insurance – Self-Insurance

69,246.74

Total Personnel Services – Employee Benefits

\$128,775.01

400 Purchased Property Services

430 Repairs and Maintenance Services

22,319.02

440 Rentals

63,746.74

Total Purchased Property Services

\$86,065.76

600 Supplies

610 General Supplies

167,357.78

620 Energy

269,839.90

Total Supplies

\$437,197.68

700 Property

762 Capitalized Equipment - Replacement

250,827.88

Total Property

\$250,827.88

Total 2740 Vehicle Servicing and Maintenance Services

\$1,046,052.60

General Fund (10)

	<u>Elementary</u>	<u>Secondary</u>	<u>Federal</u>	<u>Total</u>
2750 Nonpublic Transportation				
100 Personnel Services – Salaries				
100 Personnel Services – Salaries				465,355.37
Total Personnel Services – Salaries				\$465,355.37
200 Personnel Services – Employee Benefits				
220 Social Security Contributions				34,017.62
230 PSERS Retirement Contributions				154,948.84
240 Tuition Reimbursement				65.38
250 Unemployment Compensation				4,435.04
260 Workers' Compensation				225,051.92
Total Personnel Services – Employee Benefits				\$418,518.80
Total 2750 Nonpublic Transportation				\$883,874.17

General Fund (10)

	<u>Elementary</u>	<u>Secondary</u>	<u>Federal</u>	<u>Total</u>
2800 Support Services – Central				
100 Personnel Services – Salaries				
100 Personnel Services – Salaries				745,784.65
Total Personnel Services – Salaries				\$745,784.65
200 Personnel Services – Employee Benefits				
220 Social Security Contributions				54,347.69
230 PSERS Retirement Contributions				247,551.40
240 Tuition Reimbursement				74,597.40
250 Unemployment Compensation				37.25
260 Workers' Compensation				7,085.57
270 Group Insurance – Self-Insurance				124,314.18
Total Personnel Services – Employee Benefits				\$507,933.49
300 Purchased Professional and Technical Services				
330 Other Professional Services				18,298.39
Total Purchased Professional and Technical Services				\$18,298.39
500 Other Purchased Services				
530 Communications				310.00
550 Printing and Binding				1,157.64
580 Travel				4,035.72
Total Other Purchased Services				\$5,503.36
600 Supplies				
610 General Supplies				3,736.14
630 Food				218.11
Total Supplies				\$3,954.25
700 Property				
736 Technology Equipment Lease				339,506.00
738 Technology Software Lease and Other Right-to-Use Arrangements				123,194.00
752 Capital Equipment – Original and Additional				5,024.19
762 Capitalized Equipment - Replacement				4,084.71
Total Property				\$471,808.90
800 Other Objects				
810 Dues and Fees				1,348.00
880 Refunds of Prior Years' Receipts				(30,821.21)
Total Other Objects				(\$29,473.21)
Total 2800 Support Services – Central				\$1,723,809.83

General Fund (10)

2820 Information Services

Elementary Secondary Federal Total

100 Personnel Services – Salaries

100 Personnel Services – Salaries 199,591.34

Total Personnel Services – Salaries \$199,591.34

200 Personnel Services – Employee Benefits

220 Social Security Contributions 14,425.62

230 PSERS Retirement Contributions 65,708.09

250 Unemployment Compensation 9.31

260 Workers' Compensation 1,880.74

270 Group Insurance – Self-Insurance 24,856.29

Total Personnel Services – Employee Benefits \$106,880.05

300 Purchased Professional and Technical Services

330 Other Professional Services 18,298.39

Total Purchased Professional and Technical Services \$18,298.39

500 Other Purchased Services

530 Communications 310.00

550 Printing and Binding 1,157.64

580 Travel 3,601.68

Total Other Purchased Services \$5,069.32

600 Supplies

610 General Supplies 3,736.14

630 Food 218.11

Total Supplies \$3,954.25

700 Property

752 Capital Equipment – Original and Additional 5,024.19

762 Capitalized Equipment - Replacement 4,084.71

Total Property \$9,108.90

800 Other Objects

810 Dues and Fees 1,348.00

Total Other Objects \$1,348.00

Total 2820 Information Services \$344,250.25

General Fund (10)

2830 Staff Services

Elementary

Secondary

Federal

Total

200 Personnel Services – Employee Benefits

240 Tuition Reimbursement

74,597.40

Total Personnel Services – Employee Benefits

\$74,597.40

Total 2830 Staff Services

\$74,597.40

General Fund (10)

2834 Staff Development Services – Non-Instructional, Certified Staff Only

Elementary

Secondary

Federal

Total

200 Personnel Services – Employee Benefits

240 Tuition Reimbursement

67,171.40

Total Personnel Services – Employee Benefits

\$67,171.40

Total 2834 Staff Development Services – Non-Instructional, Certified Staff Only

\$67,171.40

General Fund (10)

2836 Staff Development Services – Non-Instructional, Non-Certified Staff Only

Elementary

Secondary

Federal

Total

200 Personnel Services – Employee Benefits

240 Tuition Reimbursement

7,426.00

Total Personnel Services – Employee Benefits

\$7,426.00

Total 2836 Staff Development Services – Non-Instructional, Non-Certified Staff Only

\$7,426.00

General Fund (10)

2900 Other Support Services

Elementary

Secondary

Federal

Total

500 Other Purchased Services

595 IU Payments By Withholding

40,328.07

Total Other Purchased Services

\$40,328.07

Total 2900 Other Support Services

\$40,328.07

General Fund (10)

2910 Support Services Not Listed Elsewhere In the 2000 Series

Elementary

Secondary

Federal

Total

500 Other Purchased Services

595 IU Payments By Withholding

40,328.07

Total Other Purchased Services

\$40,328.07

Total 2910 Support Services Not Listed Elsewhere In the 2000 Series

\$40,328.07

General Fund (10)

3000 Operation of Non-Instructional Services		<u>Total</u>
100 Personnel Services – Salaries		
100 Personnel Services – Salaries		1,342,651.76
Total Personnel Services – Salaries		\$1,342,651.76
200 Personnel Services – Employee Benefits		
220 Social Security Contributions		97,960.05
230 PSERS Retirement Contributions		446,750.42
250 Unemployment Compensation		18.63
260 Workers' Compensation		12,771.51
270 Group Insurance – Self-Insurance		47,577.39
Total Personnel Services – Employee Benefits		\$605,078.00
300 Purchased Professional and Technical Services		
330 Other Professional Services		92,280.21
Total Purchased Professional and Technical Services		\$92,280.21
400 Purchased Property Services		
430 Repairs and Maintenance Services		18,858.82
Total Purchased Property Services		\$18,858.82
500 Other Purchased Services		
520 Insurance – General		13,392.00
580 Travel		32,382.46
591 Services Purchased Locally		(35.00)
Total Other Purchased Services		\$45,739.46
600 Supplies		
610 General Supplies		98,765.54
Total Supplies		\$98,765.54
700 Property		
752 Capital Equipment – Original and Additional		46,392.41
Total Property		\$46,392.41
800 Other Objects		
810 Dues and Fees		23,646.84
Total Other Objects		\$23,646.84
Total 3000 Operation of Non-Instructional Services		\$2,273,413.04

General Fund (10)

3200 Student Activities

	<u>Elementary</u>	<u>Secondary</u>	<u>Federal</u>	<u>Total</u>
100 Personnel Services – Salaries				
100 Personnel Services – Salaries				1,333,418.16
Total Personnel Services – Salaries				\$1,333,418.16
200 Personnel Services – Employee Benefits				
220 Social Security Contributions				97,289.08
230 PSERS Retirement Contributions				443,694.23
250 Unemployment Compensation				18.63
260 Workers' Compensation				12,684.04
270 Group Insurance – Self-Insurance				47,577.39
Total Personnel Services – Employee Benefits				\$601,263.37
300 Purchased Professional and Technical Services				
330 Other Professional Services				92,280.21
Total Purchased Professional and Technical Services				\$92,280.21
400 Purchased Property Services				
430 Repairs and Maintenance Services				18,858.82
Total Purchased Property Services				\$18,858.82
500 Other Purchased Services				
520 Insurance – General				13,392.00
580 Travel				32,382.46
Total Other Purchased Services				\$45,774.46
600 Supplies				
610 General Supplies				98,765.54
Total Supplies				\$98,765.54
700 Property				
752 Capital Equipment – Original and Additional				46,392.41
Total Property				\$46,392.41
800 Other Objects				
810 Dues and Fees				23,646.84
Total Other Objects				\$23,646.84
Total 3200 Student Activities				\$2,260,399.81

General Fund (10)

3300 Community Services

Elementary

Secondary

Federal

Total

100 Personnel Services – Salaries

100 Personnel Services – Salaries

9,233.60

Total Personnel Services – Salaries

\$9,233.60

200 Personnel Services – Employee Benefits

220 Social Security Contributions

670.97

230 PSERS Retirement Contributions

3,056.19

260 Workers' Compensation

87.47

Total Personnel Services – Employee Benefits

\$3,814.63

500 Other Purchased Services

591 Services Purchased Locally

(35.00)

Total Other Purchased Services

(\$35.00)

Total 3300 Community Services

\$13,013.23

General Fund (10)

5000 Other Expenditures and Financing Uses

Total

800 Other Objects

830 Interest 3,049,141.94

Total Other Objects \$3,049,141.94

900 Other Uses of Funds

910 Redemption of Principal 6,413,691.31

Total Other Uses of Funds \$6,413,691.31

Total 5000 Other Expenditures and Financing Uses \$9,462,833.25

General Fund (10)

	<u>Elementary</u>	<u>Secondary</u>	<u>Federal</u>	<u>Total</u>
5100 Debt Service / Other Expenditures and Financing Uses				
800 Other Objects				
830 Interest				3,049,141.94
Total Other Objects				\$3,049,141.94
900 Other Uses of Funds				
910 Redemption of Principal				6,413,691.31
Total Other Uses of Funds				\$6,413,691.31
Total 5100 Debt Service / Other Expenditures and Financing Uses				\$9,462,833.25

General Fund (10)

	<u>Elementary</u>	<u>Secondary</u>	<u>Federal</u>	<u>Total</u>
5110 Debt Service				
800 Other Objects				
830 Interest				3,032,125.00
Total Other Objects				\$3,032,125.00
900 Other Uses of Funds				
910 Redemption of Principal				6,270,000.00
Total Other Uses of Funds				\$6,270,000.00
Total 5110 Debt Service				\$9,302,125.00

General Fund (10)

	<u>Elementary</u>	<u>Secondary</u>	<u>Federal</u>	<u>Total</u>
5140 Leases and Other Right-to-Use Arrangements				
800 Other Objects				
830 Interest				17,016.94
Total Other Objects				\$17,016.94
900 Other Uses of Funds				
910 Redemption of Principal				143,691.31
Total Other Uses of Funds				\$143,691.31
Total 5140 Leases and Other Right-to-Use Arrangements				\$160,708.25

Capital Reserve Fund - § 1431 (32)

4000 Facilities Acquisition, Construction and Improvement Services

Total

700 Property

762 Capitalized Equipment - Replacement

(4,200.00)

Total Property

(\$4,200.00)

Total 4000 Facilities Acquisition, Construction and Improvement Services

(\$4,200.00)

LEA : 124158503 Unionville-Chadds Ford SD

Printed 1/6/2025 3:51:42 PM

Capital Reserve Fund - § 1431 (32)

4600 Existing Building Improvement Services

Elementary

Secondary

Federal

Total

700 Property

762 Capitalized Equipment - Replacement

(4,200.00)

Total Property

(\$4,200.00)

Total 4600 Existing Building Improvement Services

(\$4,200.00)

Other Capital Projects Fund (39)

2000 Support Services

Total

700 Property

762 Capitalized Equipment - Replacement

270,503.00

Total Property

\$270,503.00

800 Other Objects

810 Dues and Fees

205,302.44

Total Other Objects

\$205,302.44

Total 2000 Support Services

\$475,805.44

Other Capital Projects Fund (39)

2300 Support Services – Administration

Elementary

Secondary

Federal

Total

800 Other Objects

810 Dues and Fees

205,302.44

Total Other Objects

\$205,302.44

Total 2300 Support Services – Administration

\$205,302.44

LEA : 124158503 Unionville-Chadds Ford SD

Printed 1/6/2025 3:51:35 PM

Other Capital Projects Fund (39)

2390 Other Administration Services

Elementary

Secondary

Federal

Total

800 Other Objects

810 Dues and Fees

205,302.44

Total Other Objects

\$205,302.44

Total 2390 Other Administration Services

\$205,302.44

LEA : 124158503 Unionville-Chadds Ford SD

Printed 1/6/2025 3:51:35 PM

Other Capital Projects Fund (39)

2700 Student Transportation Services

Elementary

Secondary

Federal

Total

700 Property

762 Capitalized Equipment - Replacement

270,503.00

Total Property

\$270,503.00

Total 2700 Student Transportation Services

\$270,503.00

Other Capital Projects Fund (39)

2740 Vehicle Servicing and Maintenance Services

Elementary

Secondary

Federal

Total

700 Property

762 Capitalized Equipment - Replacement

270,503.00

Total Property

\$270,503.00

Total 2740 Vehicle Servicing and Maintenance Services

\$270,503.00

Other Capital Projects Fund (39)

4000 Facilities Acquisition, Construction and Improvement Services

Total

300 Purchased Professional and Technical Services

330 Other Professional Services

3,664.00

Total Purchased Professional and Technical Services

\$3,664.00

700 Property

762 Capitalized Equipment - Replacement

6,137,907.74

Total Property

\$6,137,907.74

Total 4000 Facilities Acquisition, Construction and Improvement Services

\$6,141,571.74

Other Capital Projects Fund (39)

	<u>Elementary</u>	<u>Secondary</u>	<u>Federal</u>	<u>Total</u>
4600 Existing Building Improvement Services				
300 <u>Purchased Professional and Technical Services</u>				
330 Other Professional Services				3,664.00
Total Purchased Professional and Technical Services				\$3,664.00
700 <u>Property</u>				
762 Capitalized Equipment - Replacement				6,137,907.74
Total Property				\$6,137,907.74
Total 4600 Existing Building Improvement Services				\$6,141,571.74

	<u>General Fund(10)</u>	<u>Student Sponsored Activity Fund(21)</u>	<u>Public Purpose Trust(27)</u>	<u>Other Compt Approved (28)</u>	<u>Athletic / Activity(29)</u>
1000 Instruction					
1100 Regular Programs - Elementary / Secondary	40,892,659.02				
1200 Special Programs - Elementary / Secondary	18,452,809.94				
1300 Vocational Education	1,011,189.86				
1400 Other Instructional Programs - Elementary / Secondary	91,100.80				
Total Instruction	\$60,447,759.62				
2000 Support Services					
2100 Support Services - Students	4,400,057.25				
2200 Support Services - Instructional Staff	5,834,367.17				
2300 Support Services - Administration	4,801,618.35				
2400 Support Services - Pupil Health	1,018,549.31				
2500 Support Services - Business	922,895.70				
2600 Operation and Maintenance of Plant Services	8,249,040.81				
2700 Student Transportation Services	4,328,674.39				
2800 Support Services - Central	1,723,809.83				
2900 Other Support Services	40,328.07				
Total Support Services	\$31,319,340.88				
3000 Operation of Non-Instructional Services					
3200 Student Activities	2,260,399.81				
3300 Community Services	13,013.23				
Total Operation of Non-Instructional Services	\$2,273,413.04				
4000 Facilities Acquisition, Construction and Improvement Services					
4600 Existing Building Improvement Services					
Total Facilities Acquisition, Construction and Improvement Services					
5000 Other Expenditures and Financing Uses					
5100 Debt Service / Other Expenditures and Financing Uses	9,462,833.25				
Total Other Expenditures and Financing Uses	\$9,462,833.25				
TOTAL ACTUAL EXPENDITURES & OTHER FINANCING USES	\$103,503,346.79				

	<u>Capital Reserve (690.1850)(31)</u>	<u>Capital Reserve (1431)(32)</u>	<u>Other Capital Projects Fund(39)</u>	<u>Debt Service(40)</u>	<u>Permanent(90)</u>
1000 Instruction					
1100 Regular Programs - Elementary / Secondary					
1200 Special Programs - Elementary / Secondary					
1300 Vocational Education					
1400 Other Instructional Programs - Elementary / Secondary					
Total Instruction					
2000 Support Services					
2100 Support Services - Students					
2200 Support Services - Instructional Staff					
2300 Support Services - Administration			205,302.44		
2400 Support Services - Pupil Health					
2500 Support Services - Business					
2600 Operation and Maintenance of Plant Services					
2700 Student Transportation Services			270,503.00		
2800 Support Services - Central					
2900 Other Support Services					
Total Support Services			\$475,805.44		
3000 Operation of Non-Instructional Services					
3200 Student Activities					
3300 Community Services					
Total Operation of Non-Instructional Services					
4000 Facilities Acquisition, Construction and Improvement Services					
4600 Existing Building Improvement Services		(4,200.00)	6,141,571.74		
Total Facilities Acquisition, Construction and Improvement Services		(\$4,200.00)	\$6,141,571.74		
5000 Other Expenditures and Financing Uses					
5100 Debt Service / Other Expenditures and Financing Uses					
Total Other Expenditures and Financing Uses					
TOTAL ACTUAL EXPENDITURES & OTHER FINANCING USES		(\$4,200.00)	\$6,617,377.18		

Total

1000 <u>Instruction</u>	
1100 Regular Programs - Elementary / Secondary	40,892,659.02
1200 Special Programs - Elementary / Secondary	18,452,809.94
1300 Vocational Education	1,011,189.86
1400 Other Instructional Programs - Elementary / Secondary	91,100.80
Total Instruction	\$60,447,759.62
2000 <u>Support Services</u>	
2100 Support Services - Students	4,400,057.25
2200 Support Services - Instructional Staff	5,834,367.17
2300 Support Services - Administration	5,006,920.79
2400 Support Services - Pupil Health	1,018,549.31
2500 Support Services - Business	922,895.70
2600 Operation and Maintenance of Plant Services	8,249,040.81
2700 Student Transportation Services	4,599,177.39
2800 Support Services - Central	1,723,809.83
2900 Other Support Services	40,328.07
Total Support Services	\$31,795,146.32
3000 <u>Operation of Non-Instructional Services</u>	
3200 Student Activities	2,260,399.81
3300 Community Services	13,013.23
Total Operation of Non-Instructional Services	\$2,273,413.04
4000 <u>Facilities Acquisition, Construction and Improvement Services</u>	
4600 Existing Building Improvement Services	6,137,371.74
Total Facilities Acquisition, Construction and Improvement Services	\$6,137,371.74
5000 <u>Other Expenditures and Financing Uses</u>	
5100 Debt Service / Other Expenditures and Financing Uses	9,462,833.25
Total Other Expenditures and Financing Uses	\$9,462,833.25
TOTAL ACTUAL EXPENDITURES & OTHER FINANCING USES	\$110,116,523.97

PSERS Salary Data (Salary Data should relate to the General Fund only)

Amount Description	Amount
Total Salary Base for salaries subject to PSERS withholding	45,670,503.40
Total Federally Funded salaries subject to PSERS withholding	941,759.74

Title I Expenditure Data

Amount Description	Amount
Expenditures Funded with Current Title I Funds	115,965.00
Total Title I Expenditure Data	\$115,965.00

Title IV Revenue Data

Amount Description	Amount
Revenue from Title IV-B: 21st Century Community Learning Centers	10,000.00

1 .	<u>Current Special Education Expenditures within Function 1000</u> See list of exclusions in the note below.	13,089,433.58
2 .	<u>Current Special Education Expenditures within Function 2000</u> See list of exclusions in the note below.	5,818,412.03
2A.	<u>Current Special Education Expenditures within Sub-Function 2100</u> This data should also be included in line 2 above. See list of exclusions in the note below.	2,126,541.09
2B.	<u>Current Special Education Expenditures within Sub-Function 2200</u> This data should also be included in line 2 above. See list of exclusions in the note below.	735,342.00
2C.	<u>Current Special Education Expenditures within Sub-Function 2700</u> This data should also be included in line 2 above. See list of exclusions in the note below.	331,760.27
3.	<u>Current Special Education Expenditures within Sub-Function 3100</u> See list of exclusions in the note below.	
4.	<u>Current Special Education Expenditures within Sub-Function 3200</u> See list of exclusions in the note below.	347,599.16

Note: The Current Special Education Expenditure amounts for each line should be calculated as follows:

- * Include the total expenditures for special education costs from all governmental funds and the food service fund 51 for the function/sub-function requested
- * Exclude data from sub-functions: 1243,1450,1500,1600,1807,2280,2450,2750,2990
- * Exclude data from objects: 322,511,512,516,561,562,564,566,592,593,594,595,596,597,700,830,899

Benefits for Staff Relative to Collective Bargaining Agreements

	OBJECT	COVERED	NOT COVERED	TOTAL
10 General Fund				
	211 Medical Insurance			
	212 Dental Insurance			
	215 Eye Care Insurance			
	216 Prescription Insurance			
	271 Self-Insurance Medical Benefits	3,997,377.59	2,766,288.64	6,763,666.23
	272 Self-Insurance Dental Benefits	313,580.84	215,797.56	529,378.40
	275 Self-Insurance Eye Care Benefits	47,537.24	32,713.80	80,251.04
	276 Self-Insurance Prescription Benefits	1,509,544.66	992,085.31	2,501,629.97
	FUND TOTAL	\$5,868,040.33	\$4,006,885.31	\$9,874,925.64
50 Enterprise Fund	No Self Insurance data to report			
	211 Medical Insurance			
	212 Dental Insurance			
	215 Eye Care Insurance			
	216 Prescription Insurance			
	271 Self-Insurance Medical Benefits			
	272 Self-Insurance Dental Benefits			
	275 Self-Insurance Eye Care Benefits			
	276 Self-Insurance Prescription Benefits			
	FUND TOTAL			
60 Internal Service Fund	No Self Insurance data to report			
	211 Medical Insurance			
	212 Dental Insurance			
	215 Eye Care Insurance			
	216 Prescription Insurance			
	271 Self-Insurance Medical Benefits			
	272 Self-Insurance Dental Benefits			
	275 Self-Insurance Eye Care Benefits			
	276 Self-Insurance Prescription Benefits			
	FUND TOTAL			
Total of All Funds		\$5,868,040.33	\$4,006,885.31	\$9,874,925.64

LEA : 124158503 Unionville-Chadds Ford SD

Printed 1/6/2025 3:52:17 PM

Function	Special Education (Prior Year)	Nonspecial Education (Prior Year)	Total (Prior Year)	Special Education (Current Year)	Nonspecial Education (Current Year)	Total (Current Year)
2120 Guidance Services	880,932.98	1,636,018.40	2,516,951.38	829,379.88	1,540,276.91	2,369,656.79
2140 Psychological Services	898,598.73	47,294.67	945,893.40	1,085,586.94	57,136.16	1,142,723.10
2150 Speech Pathology and Audiology Services						
2160 Social Work Services						
2260 Instruction and Curriculum Development Services	197,552.96	790,211.84	987,764.80	197,942.56	791,770.24	989,712.80
2350 Legal and Accounting Services	91,547.99	185,680.59	277,228.58	65,677.72	113,884.67	179,562.39
2420 Medical Services						
2440 Nursing Services	238,560.17	715,680.52	954,240.69	254,637.33	763,911.98	1,018,549.31
2700 Student Transportation Services	462,998.51	3,988,910.20	4,451,908.71	450,182.14	3,878,492.25	4,328,674.39
Total	\$2,770,191.34	\$7,363,796.22	\$10,133,987.56	\$2,883,406.57	\$7,145,472.21	\$10,028,878.78

(PRINCIPAL AMOUNTS ONLY)

GOVERNMENTAL FUNDS/ ACTIVITIES

	Short-Term Borrowing	General Obligation Bonds/Notes	Authority Building Obligations	Leases, Other Right to Use Arrangements	Extended Term Financing Agreements	Other Long Term Debt/Liabilities	OPEB, Comp Abs, Net Pension Liab	Total
1. Debt at Beginning of Fiscal Year		69,640,000.00		86,297.00			134,110,793.00	203,837,090.00
2. Additional Debt Incurred During Year		12,790,000.00		462,700.00			195,595.36	13,448,295.36
3. Retirements and Repayments		6,270,000.00		143,691.31			1,808,345.00	8,222,036.31
4. Debt at End of Fiscal Year		76,160,000.00		405,305.69			132,498,043.36	209,063,349.05
5. Accreted Interest at End Of Fiscal Year								
6. Total Debt and Accreted Interest		76,160,000.00		405,305.69			132,498,043.36	209,063,349.05
7. Current Portion P&I - Due within 1 year		9,960,661.11		82,321.84				10,042,982.95
8. Interest Paid during current fiscal year		3,032,125.00		17,016.94				3,049,141.94

(PRINCIPAL AMOUNTS ONLY)

PROPRIETARY FUNDS

	Short-Term Borrowing	General Obligation Bonds/Notes	Authority Building Obligations	Leases, Other Right to Use Arrangements	Extended Term Financing Agreements	Other Long Term Debt/Liabilities	OPEB, Comp Abs, Net Pension Liab	Total
1. Debt at Beginning of Fiscal Year							1,703,203.00	1,703,203.00
2. Additional Debt Incurred During Year							18,989.00	18,989.00
3. Retirements and Repayments								
4. Debt at End of Fiscal Year							1,722,192.00	1,722,192.00
5. Accreted Interest at End Of Fiscal Year								
6. Total Debt and Accreted Interest							1,722,192.00	1,722,192.00
7. Current Portion P&I - Due within 1 year								
8. Interest Paid during current fiscal year								

Total Principal and Interest Payments Made by Your School - All Funds

Function	Fund		Principal (910)	Principal (920)	Interest (830)	Total (Principal +Interest)	Misc Other Uses (990)
5110	10	General Fund	6,270,000.00		3,032,125.00	9,302,125.00	
5110	20	Special Revenue Funds					
5110	30	Capital Projects Funds					
5110	40	Debt Service Fund					
5110	90	Permanent Fund					
5120	10	General Fund					
5120	20	Special Revenue Funds					
5120	30	Capital Projects Funds					
5120	40	Debt Service Fund					
5140	10	General Fund	143,691.31		17,016.94	160,708.25	
5140	20	Special Revenue Funds					
5140	30	Capital Projects Funds					
5140	40	Debt Service Fund					
5140	90	Permanent Fund					
Total Debt Payments - Governmental Funds			\$6,413,691.31		\$3,049,141.94	\$9,462,833.25	

Function	Fund		Principal (910)	Principal (920)	Interest (830)	Total (Principal +Interest)
5110	50	Enterprise Fund				
5110	60	Internal Service Fund				
5120	50	Enterprise Fund				
5120	60	Internal Service Fund				
5140	50	Enterprise Fund				
5140	60	Internal Service Fund				

Total Debt Payments - Proprietary Funds

Debt Details
Governmental Funds/ Activities

Debt Category	Debt Issue Date (MM/YYYY)	Principal Amounts Only			Debt at End of Fiscal Year	Current Portion Due Within One Year (Principal and Interest)	Interest Paid During Fiscal Year
		Debt at Beginning of Fiscal Year	Additions	Reductions / Repayments			
General Obligation Bonds/Notes – CIB	04/2024		12,790,000.00		12,790,000.00	658,711.11	
General Obligation Bonds/Notes – CIB	02/2022	11,305,000.00		425,000.00	10,880,000.00	857,400.00	434,400.00
General Obligation Bonds/Notes – CIB	02/2022	940,000.00		465,000.00	475,000.00	494,000.00	28,300.00
General Obligation Bonds/Notes – CIB	05/2019	6,410,000.00		550,000.00	5,860,000.00	784,600.00	236,975.00
General Obligation Bonds/Notes – CIB	09/2016	50,985,000.00		4,830,000.00	46,155,000.00	7,165,950.00	2,332,450.00
Leases and Other Right to Use Arrangements		86,297.00	462,700.00	143,691.31	405,305.69	82,321.84	17,016.94
Net Pension Liability		127,004,797.00		1,718,374.00	125,286,423.00		
Other Post-Employment Benefits (OPEB)		3,235,397.00		89,971.00	3,145,426.00		
Compensated Absences		3,870,599.00	195,595.36		4,066,194.36		
Totals for Debt Entered:		\$203,837,090.00	\$13,448,295.36	\$8,222,036.31	\$209,063,349.05	\$10,042,982.95	\$3,049,141.94

Bond Details
Proprietary Funds

Debt Category	Debt Issue Date (MM/YYYY)	Principal Amounts Only			Debt at End of Fiscal Year	Current Portion Due Within One Year (Principal and Interest)	Interest Paid During Fiscal Year
		Debt at Beginning of Fiscal Year	Additions	Reductions / Repayments			
Net Pension Liability		1,703,203.00	18,989.00		1,722,192.00		
Totals for Debt Entered:		\$1,703,203.00	\$18,989.00		\$1,722,192.00		

General Fund (10)

Section 1: Tuition/Purchased Services as Reported within Expenditure Detail

	Amount
Tuition Reported in General Fund Expenditures 1000-560	1,988,836.97
Purchased Services in General Fund Expenditures 1000-594 and 1000-597	557.58
Section 1 Total	\$1,989,394.55

Section 2: Tuition Paid to Institution Types During Fiscal Year

	Tuition Paid For Nonspecial Education	Tuition Paid For Special Education	Total
1 1306 Institutions			
2 Institutionalized Children's Programs		557.58	557.58
3 Juveniles Incarcerated in Adult Facilities			
4 Residential Treatment Facilities			
5 Other Local Education Agencies	97,191.48	122,795.45	219,986.93
6 Brick and Mortar Charter Schools	29,102.19	31,949.67	61,051.86
7 Cyber Charter Schools	455,934.35	181,048.11	636,982.46
8 Career and Technology Centers	963,092.36		963,092.36
9 Approved Private Schools		42,599.03	42,599.03
10 PA Chartered Schools for the Deaf and Blind			
11 Private Residential Rehabilitative Institutions			
12 Juvenile Detention Centers	65,124.33		65,124.33
13 Special Program Jointures			
14 Other Tuition Not Included Elsewhere In This Section			
Section 2 Total	\$1,610,444.71	\$378,949.84	\$1,989,394.55

- 1 . Student Transportation Services for Educational Field Trips

- 2 . Student Transportation Services for Student Activities 34,378.19

- 3 . Rental of Vehicles for Student Transportation Services

- 4 . Capital Reserve Funds

Include only district-owned transportation expenditures paid from State or local money.
 DO NOT include federal expenditures or payments to contract service providers.
 Contracted transportation services should not be recorded on this schedule.

Food Service / Cafeteria Operations Fund (51)

3000 Operation of Non-Instructional Services

Total

100 Personnel Services – Salaries

100 Personnel Services – Salaries 622,931.27

Total Personnel Services – Salaries \$622,931.27

200 Personnel Services – Employee Benefits

220 Social Security Contributions 47,443.97

230 PSERS Retirement Contributions 203,221.12

270 Group Insurance – Self-Insurance 218,413.59

Total Personnel Services – Employee Benefits \$469,078.68

600 Supplies

610 General Supplies 1,115,927.16

Total Supplies \$1,115,927.16

700 Property

740 Depreciation 37,285.94

Total Property \$37,285.94

Total 3000 Operation of Non-Instructional Services \$2,245,223.05

Food Service / Cafeteria Operations Fund (51)

	<u>Elementary</u>	<u>Secondary</u>	<u>Federal</u>	<u>Total</u>
3100 Food Services				
100 Personnel Services – Salaries				
100 Personnel Services – Salaries				622,931.27
Total Personnel Services – Salaries				\$622,931.27
200 Personnel Services – Employee Benefits				
220 Social Security Contributions				47,443.97
230 PSERS Retirement Contributions				203,221.12
270 Group Insurance – Self-Insurance				218,413.59
Total Personnel Services – Employee Benefits				\$469,078.68
600 Supplies				
610 General Supplies				1,115,927.16
Total Supplies				\$1,115,927.16
700 Property				
740 Depreciation				37,285.94
Total Property				\$37,285.94
Total 3100 Food Services				\$2,245,223.05

Internal Service Fund (60)

2000 Support Services

Total

200 Personnel Services – Employee Benefits

270 Group Insurance – Self-Insurance

9,867,021.00

Total Personnel Services – Employee Benefits

\$9,867,021.00

300 Purchased Professional and Technical Services

330 Other Professional Services

7,905.00

Total Purchased Professional and Technical Services

\$7,905.00

Total 2000 Support Services

\$9,874,926.00

Internal Service Fund (60)

2800 Support Services – Central

Elementary

Secondary

Federal

Total

200 Personnel Services – Employee Benefits

270 Group Insurance – Self-Insurance

9,867,021.00

Total Personnel Services – Employee Benefits

\$9,867,021.00

300 Purchased Professional and Technical Services

330 Other Professional Services

7,905.00

Total Purchased Professional and Technical Services

\$7,905.00

Total 2800 Support Services – Central

\$9,874,926.00

Internal Service Fund (60)

2830 Staff Services

Elementary

Secondary

Federal

Total

200 Personnel Services – Employee Benefits

270 Group Insurance – Self-Insurance

9,867,021.00

Total Personnel Services – Employee Benefits

\$9,867,021.00

300 Purchased Professional and Technical Services

330 Other Professional Services

7,905.00

Total Purchased Professional and Technical Services

\$7,905.00

Total 2830 Staff Services

\$9,874,926.00

Internal Service Fund (60)

2835 Health Services

Elementary

Secondary

Federal

Total

200 Personnel Services – Employee Benefits

270 Group Insurance – Self-Insurance

9,867,021.00

Total Personnel Services – Employee Benefits

\$9,867,021.00

300 Purchased Professional and Technical Services

330 Other Professional Services

7,905.00

Total Purchased Professional and Technical Services

\$7,905.00

Total 2835 Health Services

\$9,874,926.00

	<u>Food Service(51)</u>	<u>Child Care Operations(52)</u>	<u>Other Enterprise(58)</u>	<u>Internal Service(60)</u>	<u>Total</u>
2000 <u>Support Services</u>					
2800 Support Services - Central				9,874,926.00	9,874,926.00
Total Support Services				\$9,874,926.00	\$9,874,926.00
3000 <u>Operation of Non-Instructional Services</u>					
3100 Food Services	2,245,223.05				2,245,223.05
Total Operation of Non-Instructional Services	\$2,245,223.05				\$2,245,223.05
TOTAL ACTUAL EXPENDITURES & OTHER FINANCING USES	\$2,245,223.05			\$9,874,926.00	\$12,120,149.05

LEA : 124158503 Unionville-Chadds Ford SD

Printed 1/6/2025 3:52:58 PM

Fund	School	School Number	Local Personnel	Local Nonpersonnel	State Personnel	State Nonpersonnel	Federal Personnel	Federal Nonpersonnel	Total	Explanation
10										
	Chadds Ford El Sch	1441	7,920,946.13	875,204.25	1,857,999.71	205,294.82	206,476.60	7,258.59	11,073,180.10	
	Charles F Patton MS	6719	10,097,058.57	1,614,198.73	2,368,445.84	378,639.21	92,904.62	179,691.61	14,730,938.58	
	Hillendale El Sch	7214	8,452,783.18	860,838.37	1,982,751.61	201,925.05	88,536.90	7,572.46	11,594,407.57	
	Pocopson El Sch	7736	11,102,233.13	1,213,990.17	2,604,227.52	284,763.13	257,397.55	11,332.13	15,473,943.63	
	Unionville El Sch	1442	8,347,431.09	900,419.13	1,958,039.39	211,209.43	204,137.90	8,003.48	11,629,240.42	
	Unionville HS	1443	14,026,443.35	2,377,325.63	3,290,153.38	557,644.28	391,869.96	279,228.53	20,922,665.13	
Total			59,946,895.45	7,841,976.28	14,061,617.45	1,839,475.92	1,241,323.53	493,086.80	85,424,375.43	

	<u>Nonspecial Education</u>	<u>Special Education</u>
1000 Instruction		
1100 Regular Programs - Elementary / Secondary	2,974.00	6,038.00
Total Instruction	\$2,974.00	\$6,038.00
5000 Other Expenditures and Financing Uses		
5100 Debt Service / Other Expenditures and Financing Uses	248.00	504.00
Total Other Expenditures and Financing Uses	\$248.00	\$504.00
TOTAL ACTUAL EXPENDITURES & OTHER FINANCING USES	\$3,222.00	\$6,542.00

LEA : 124158503 Unionville-Chadds Ford SD

Printed 1/6/2025 3:53:08 PM

1000 Instruction		
100 Personnel Services - Salaries		
100 Personnel Services - Salaries	1,563.00	3,174.00
Total Personnel Services - Salaries	\$1,563.00	\$3,174.00
200 Personnel Services - Employee Benefits		
220 Social Security Contributions	111.00	225.00
230 PSERS Retirement Contributions	532.00	1,079.00
250 Unemployment Compensation	1.00	1.00
260 Workers' Compensation	15.00	30.00
270 Group Insurance - Self-Insurance	511.00	1,040.00
Total Personnel Services - Employee Benefits	\$1,170.00	\$2,375.00
300 Purchased Professional and Technical Services		
390 Other Purchased Professional and Technical Services	143.00	290.00
Total Purchased Professional and Technical Services	\$143.00	\$290.00
400 Purchased Property Services		
490 Other Purchased Property Services	19.00	39.00
Total Purchased Property Services	\$19.00	\$39.00
500 Other Purchased Services		
599 Other Miscellaneous Purchased Services	31.00	63.00
Total Other Purchased Services	\$31.00	\$63.00
600 Supplies		
610 General Supplies	48.00	97.00
Total Supplies	\$48.00	\$97.00
Total 1000 Instruction	\$2,974.00	\$6,038.00

LEA : 124158503 Unionville-Chadds Ford SD

Printed 1/6/2025 3:53:08 PM

1100 Regular Programs - Elementary / Secondary	<u>Nonspecial Education</u>	<u>Special Education</u>
100 Personnel Services - Salaries		
100 Personnel Services - Salaries	1,563.00	3,174.00
Total Personnel Services - Salaries	\$1,563.00	\$3,174.00
200 Personnel Services - Employee Benefits		
220 Social Security Contributions	111.00	225.00
230 PSERS Retirement Contributions	532.00	1,079.00
250 Unemployment Compensation	1.00	1.00
260 Workers' Compensation	15.00	30.00
270 Group Insurance - Self-Insurance	511.00	1,040.00
Total Personnel Services - Employee Benefits	\$1,170.00	\$2,375.00
300 Purchased Professional and Technical Services		
390 Other Purchased Professional and Technical Services	143.00	290.00
Total Purchased Professional and Technical Services	\$143.00	\$290.00
400 Purchased Property Services		
490 Other Purchased Property Services	19.00	39.00
Total Purchased Property Services	\$19.00	\$39.00
500 Other Purchased Services		
599 Other Miscellaneous Purchased Services	31.00	63.00
Total Other Purchased Services	\$31.00	\$63.00
600 Supplies		
610 General Supplies	48.00	97.00
Total Supplies	\$48.00	\$97.00
Total 1100 Regular Programs - Elementary / Secondary	\$2,974.00	\$6,038.00

LEA : 124158503 Unionville-Chadds Ford SD

Printed 1/6/2025 3:53:08 PM

1110 Regular Programs	<u>Nonspecial Education</u>	<u>Special Education</u>
100 Personnel Services - Salaries		
100 Personnel Services - Salaries	1,563.00	3,174.00
Total Personnel Services - Salaries	\$1,563.00	\$3,174.00
200 Personnel Services - Employee Benefits		
220 Social Security Contributions	111.00	225.00
230 PSERS Retirement Contributions	532.00	1,079.00
250 Unemployment Compensation	1.00	1.00
260 Workers' Compensation	15.00	30.00
270 Group Insurance - Self-Insurance	511.00	1,040.00
Total Personnel Services - Employee Benefits	\$1,170.00	\$2,375.00
300 Purchased Professional and Technical Services		
390 Other Purchased Professional and Technical Services	143.00	290.00
Total Purchased Professional and Technical Services	\$143.00	\$290.00
400 Purchased Property Services		
490 Other Purchased Property Services	19.00	39.00
Total Purchased Property Services	\$19.00	\$39.00
500 Other Purchased Services		
599 Other Miscellaneous Purchased Services	31.00	63.00
Total Other Purchased Services	\$31.00	\$63.00
600 Supplies		
610 General Supplies	48.00	97.00
Total Supplies	\$48.00	\$97.00
Total 1110 Regular Programs	\$2,974.00	\$6,038.00

LEA : 124158503 Unionville-Chadds Ford SD

Printed 1/6/2025 3:53:08 PM

5000 Other Expenditures and Financing Uses

900 Other Uses of Funds

990 Miscellaneous Other Uses of Funds	248.00	504.00
Total Other Uses of Funds	\$248.00	\$504.00
Total 5000 Other Expenditures and Financing Uses	\$248.00	\$504.00

LEA : 124158503 Unionville-Chadds Ford SD

Printed 1/6/2025 3:53:08 PM

5100 Debt Service / Other Expenditures and Financing Uses	<u>Nonspecial Education</u>	<u>Special Education</u>
900 Other Uses of Funds		
990 Miscellaneous Other Uses of Funds	248.00	504.00
Total Other Uses of Funds	\$248.00	\$504.00
Total 5100 Debt Service / Other Expenditures and Financing Uses	\$248.00	\$504.00

LEA : 124158503 Unionville-Chadds Ford SD

Printed 1/6/2025 3:53:08 PM

5110 Debt Service	<u>Nonspecial Education</u>	<u>Special Education</u>
900 Other Uses of Funds 990 Miscellaneous Other Uses of Funds	248.00	504.00
Total Other Uses of Funds	\$248.00	\$504.00
Total 5110 Debt Service	\$248.00	\$504.00

<u>Nonspecial Education</u>	<u>Special Education</u>
-----------------------------	--------------------------

7000 Revenue from State Sources

Total Revenue from State Sources	\$321	\$652
Total	\$321	\$652
TOTAL REVENUES	\$321	\$652

	<u>Nonspecial Education</u>	<u>Special Education</u>
7000 Revenue from State Sources		
7810 State Share of Social Security and Medicare Taxes	55	112
7820 State Share of Retirement Contributions	266	540
Total Revenue from State Sources	\$321	\$652
TOTAL	\$321	\$652
TOTAL REVENUES	\$321	\$652