

# SM SOUTH

### Table of Contents

Health Office	p. 3
Student of the Week	p. 4
Raiders R.I.S.E.	p. 5
KSMS Raider Report	p. 6
Counselor's Corner	p. 7
Occupation Spotlight	p. 9
Every Day Counts	p. 10
J's for Days	p. 11
PTSA	p. 12
Cappuccino Days	p. 13
Personal Technology	p. 14
Tips for parents	p. 15
Lending Library	p. 16
Rocky's Rundown	p. 17
Spirit Buttons	p. 18
Sweetheart	p. 19
Signature Program Info	p. 23
Bingo Night	p. 24
Baseball Chipotle	p. 25
Donate to Project Grad	p. 26
Little Mermaid	p. 27
Weekly Event Schedule	p. 28



### Values

We care about ALL students.

### Beliefs

We believe ALL students can and will learn.

### Vision

All means ALL! Personalized Learning for ALL students.

### UNDER ARMOUR

## Hard-Hat Hero

Staff member of the week

**Angie York**



## Tweet of the Week!



Ms. Morgan @SMSMsMorgan · 2d ... |  
 BSU's annual Black History Month elementary visits are in full swing! Spent the morning with future raiders @Rosehill512 reading books to classes! Looking forward to seeing our friends at OPC next week!



Follow Dr. Dain on  
 X: @SMSouthTDain  
 Instagram: SMSouthTDain

Angie York is our school nurse and was nominated by her colleagues: "She always puts others first. She is always welcoming students into your room, and does a great job building relationships with all of South's students. Angie goes out of her way to make sure everyone is taken care of and she also helps with after school activities. Angie is someone we all rely on, and she make's South a better place. Angie is a true Hard Hat Hero!"

**Email Dr. Dain to nominate a South staff member for the Hard Hat Hero Award**

# SHAWNEE MISSION SOUTH CALENDAR

MONDAY	TUESDAY	WEDNESDAY	THURSDAY	FRIDAY
FEBRUARY 10 Odd Block	FEBRUARY 11 Even Block	FEBRUARY 12 Odd Block	FEBRUARY 13 LATE START Even Block	FEBRUARY 14 Odd Block
FEBRUARY 17 NO SCHOOL Presidents Day	FEBRUARY 18 NO SCHOOL Professional Learning	FEBRUARY 19 Traditional Schedule	FEBRUARY 20 LATE START Even Block	FEBRUARY 21 Odd Block
FEBRUARY 24 Traditional Schedule	FEBRUARY 25 Even Block	FEBRUARY 26 Odd Block	FEBRUARY 27 LATE START Even Block	FEBRUARY 28 Odd Block
MARCH 3 Traditional Schedule 7:00pm PTSA Meeting	MARCH 4 Even Block	MARCH 5 Odd Block	MARCH 6 LATE START Even Block	MARCH 7 Odd Block
MARCH 10 Odd Block	MARCH 11 Even Block	MARCH 12 Odd Block	MARCH 13 LATE START Even Block	MARCH 14 NO SCHOOL Teacher Work Day
MARCH 17 NO SCHOOL SPRING BREAK	MARCH 18 NO SCHOOL SPRING BREAK	MARCH 19 NO SCHOOL SPRING BREAK	MARCH 20 NO SCHOOL SPRING BREAK	MARCH 21 NO SCHOOL SPRING BREAK
MARCH 24 Traditional Schedule	MARCH 25 Even Block	MARCH 26 Odd Block	MARCH 27 LATE START Even Block	MARCH 28 Odd Block
MARCH 31 Traditional Schedule	APRIL 1 Even Block	APRIL 2 Odd Block	APRIL 3 LATE START Even Block	APRIL 4 Odd Block
APRIL 7 Traditional Schedule 7:00pm PTSA Meeting	APRIL 8 Even Block	APRIL 9 Odd Block	APRIL 10 LATE START Even Block	APRIL 11 Odd Block
APRIL 14 Traditional Schedule	APRIL 15 Even Block	APRIL 16 Odd Block	APRIL 17 LATE START Even Block	APRIL 18 Odd Block
APRIL 21 NO SCHOOL Professional Learning	APRIL 22 Even Block	APRIL 23 Odd Block	APRIL 24 LATE START Even Block	APRIL 25 Odd Block

# Health Office Update February 2025



Students~ please keep extra clothes with you; locker, car, back pack. Our office is not large enough to have extra clothing, please plan accordingly for those times



Parents~ We will contact you if your student is sick and needs to go home. You are able to call attendance at 993-7546 to pick them up.

Reminder~~All medications must go through the health office, per policy students are not allowed to carry any medications without doctors approval.



Angie York - SM South Nurse  
913.993.7516  
[soyork@smsd.org](mailto:soyork@smsd.org)



# Raiders! - Nominate your Peers

[Click HERE to Nominate for Student of the Week](#)

Grace Shibel recognized

**Lucy Whelen**

with the KINDNESS CHAIN as our  
Student of the Week!

**STUDENT  
OF THE WEEK**

**Lucy  
Whelen**



# SMS Raiders RISE

Respectful to Others  
Initiates Change  
School Pride  
Empowered Learner

#RaidersRise

## PURPOSE

Monthly reward raffle for qualifying students who help Raiders RISE above expectations and develop an accepting and safe culture. RISE recipients are announced the first Monday of the month.

## HOW TO QUALIFY

- 1 or less unexcused absences
- 1 or less tardies
- 90% attendance rate
- 0 discipline referrals
- No Fs

Congratulations to our **January**

**Raiders R.I.S.E. winners:**

**Freshmen: Kate Fitzpatrick**

**Sophomore: Jackie Welch**

**Junior: Troy Wilson**

**Senior: Alix Torres Aguilar**



**UNDER ARMOUR**



# RAIDER REPORT

PRESENTED BY KSMS

*click here to watch:*

KSMS Raider Report 15: <https://www.youtube.com/watch?v=EQntp9IBxUQ&t=13s>





Follow @counselingSMS on twitter  
Facebook 'Shawnee Mission South Counseling'

Please see below to find your counselor's name.

<u>Your Last Name</u>	<u>Your Counselor's Name</u>
A-C & ELL	Nichole Dosland
D-I	Chris Shelby
J-O	Jasmine Morgan
P-T	Jennifer Herrmann
U-Z	Traci Johnson

- The **KC Scholars Scholarships for 9<sup>th</sup> and 11<sup>th</sup> graders** deadline is approaching. This is a great opportunity for 9<sup>th</sup> and 11<sup>th</sup> graders. <https://greatjobskc.org/scholarships/> The deadline to apply is Feb. 28<sup>th</sup> See attached fliers for more information.
- Feb 25<sup>th</sup> is the State ACT exam for juniors. More information will be coming next week regarding times and testing locations.
- If you have not submitted your 25-26 course requests, make an appointment with your alpha counselor asap!
- Summer Academy and Summer Eschool registration will open Feb 20<sup>th</sup>. More information coming soon.
- Need help paying your electric bill? LIEAP can help you <https://www.dcf.ks.gov/services/ees/Pages/EnergyAssistance.aspx>

If you or someone you know is feeling unsafe or having thoughts of harming themselves or others, please utilize these resources:

- Call 988/911/Go to an Emergency Room
- Call the National Suicide Prevention Hotline at 1-800-273-8255
- Text HOME to 741741 to connect with a Crisis Counselor
- Recursos en Español- [El Centro](#) [JoCo Salud Mental- se habla Español.](#)



Occupation Spotlight: High Demand – High Wage Careers



<b>\$17.65</b> Entry Level Wage	<b>0.4%</b> Average Annual Growth	<b>MODERATE-TERM</b> on-the-job training
<b>\$25.53</b> Experienced Level Wage	<b>100</b> Annual Openings	<b>NO</b> Work Experience

### Insurance Claims & Policy Processing Clerks

Also called: Claims Processor, Claims Representative, Claims Technician, Underwriting Assistant

Process new insurance policies, modifications to existing policies, and claims forms. Obtain information from policyholders to verify the accuracy and completeness of information on claims forms, applications and related documents, and company records. Update existing policies and company records to reflect changes requested by policyholders and insurance company representatives.

#### Knowledge

- Engineering & Technology**
  - computers and electronics
- Business**
  - customer service
  - administrative services
- Arts & Humanities**
  - English language

#### Skills

- Basic Skills**
  - reading work related information
  - talking to others
- Problem Solving**
  - noticing a problem and figuring out the best way to solve it

#### Abilities

- Verbal**
  - read and understand what is written
  - listen and understand what people say
- Ideas & Logic**
  - order or arrange things
  - use rules to solve problems

#### Technology

- You might use software like this:
- Database User Interface & Query**
    - Database software
    - Microsoft Access
  - Instant Messaging**
    - GroupMe
  - Medical**
    - Medical condition coding software
    - Medical procedure coding software

# EVERY. DAY. COUNTS!!!



*Your Attendance Matters!*

## **District Attendance Specialist**

Hello! My name is Memo Rodriguez and I am the Shawnee Mission School District Attendance Specialist for the South high school feeder area. I am here mainly to provide follow-up monitoring of students identified as needing support for chronic absenteeism, but other functions I perform are:

- I serve as a liaison between students, families, and school teams to facilitate positive student attendance.
- I cooperate with representatives from social services and law enforcement agencies in cases of mutual interests.
- I manage all associated paperwork, arrange for educational facilitators, connect families with needed community resources.
- I communicate and work effectively and cooperatively with members of the school district and community to promote student attendance.
- I work effectively with chronically absent as well as truant students and their families.
- I connect families struggling with attendance with appropriate school and community resources.

My hours at South high school are Monday through Friday 7 A.M. to 12 P.M.

Indian Woods middle school hours are Monday through Friday 12:30 P.M. to 3:30 P.M.

If you have any questions regarding phone calls or emails received by me, please feel free to reach out.

Thank you,

## **Memo Rodriguez**

District Attendance Specialist

**Shawnee Mission South High School**

**Indian Woods Middle School**

**SMSHS:** 913-993-7781

**IWMS:** 913-993-0699

[Memorodriguez@smsd.org](mailto:Memorodriguez@smsd.org)

# Attendance Incentive

SHAWNEE MISSION SOUTH

# J'S FOR DAYS

PERFECT ATTENDANCE



2 STUDENTS EACH SEMESTER PICK OUT THEIR OWN JORDANS

**PTSA Meets Mondays at 7:00pm**  
**March 3 – Room 251**  
**April 7 - Library**

English link <https://form.jotform.com/242038408631149>  
Spanish link <https://form.jotform.com/242039139588162>



# Cappuccino Days are Back!



February 12th and 13th (7:30-11am and 1-3pm)

<http://www.signupgenius.com/go/20f0c4aaaa62bab9-cappuccino>

Students and staff can purchase hot drinks and goodies for themselves or a special someone to benefit PTSA!

We need volunteers to HELP SERVE and to provide goodies to sell. Please sign up for multiple slots!

Please bring food no later than 7:30 am to the library!



# Personal Technology Procedures

At the January 13, 2025, Board of Education meeting, the Board approved policy JCDC: Restrictions on Possession and Use of Personal Electronic Devices. [Click here to read the SMSD policy.](#) Full implementation of this policy will begin on February 3, 2025.

This policy was developed in response to feedback and concerns raised by students, parents, and staff about how these devices can disrupt learning and negatively impact the mental and emotional health of students. Our mission, as defined in our [SMSD Strategic Plan](#), continues to be that we help each student achieve their full potential.

This fall, a Strategic Plan Action Team worked to create a policy recommendation on age-appropriate use of personal electronic devices in our schools. Their thoughtful recommendations included input from 25 Action Team members representing teachers, administrators, students, parents, and community members. Their work also included feedback gathered through a district-wide Thought Exchange, ensuring many voices and opinions were included. This process has also been informed with the advice of SMSD principals, educators of all age levels, and students and staff in the Superintendent's advisory committees. You can see more detail about this process outlined in this presentation, [linked here](#), delivered to the Board of Education at the Jan. 13, 2025 meeting.

The Shawnee Mission School District is committed to providing highly effective and consistent learning spaces across the district.

## Personal Electronic Device Policy

- Personal electronic devices to include the use of cell phones and headphones (other than smartwatches) should be silenced and stored during class. Teachers may provide a secure storage option in the classroom.
- Devices can be used between classes and at lunch but must remain silenced and put away during class time unless used for learning with teacher approval.

*Note: In rare cases, administration may approve exceptions.*

While our schools will guide students on using personal electronic devices appropriately, we know this change will succeed with the support of our families. Thank you for your partnership in helping us maintain a positive school environment.

# READ LIKE A PRO

Reading assignments can come in many forms. Whether it's a long article, a novel, or just the directions, here are some strategies to boost reading skills to help students succeed!



## READING STRATEGIES

- **Know the Purpose:** Find out the purpose of the reading before you start to help you focus on what's important. Your teacher might mention it in class or state it in the directions.
- **Tackle New Words:** Don't skip over words you don't know—pause to look them up.
- **Read Actively:** As you read directions, articles, or graphs, annotate either on paper or digitally by jotting down your thoughts, highlight key points, and mark any parts that confuse you.
- **Break It Up:** For longer assignments, divide the text into sections and take a 5-10 minute break between each chunk.



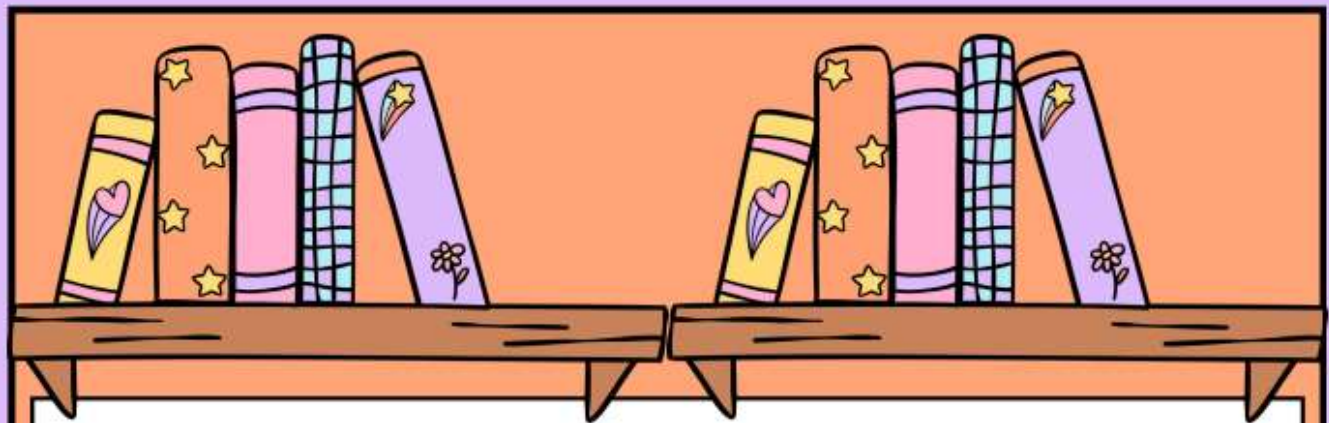
SM SOUTH LIBRARY



## IT'S HIP TO READ

Students: check out the "It's Hip to Read" signs around the building to see what your teachers & principals are reading.

Ask them about what they like to read & you might find some new suggestions. **Check out a book from the library to read for fun especially if you are done with work during seminar.**



## OUR LENDING LIBRARY

- SMS STUCO has created a shared resource library for all SMS clubs and teams to use when hosting banquets/ events. Think linens, decor, and more!
- This is putting your student activity fees to work for the SMS community



QR code for the Resource Library Form

Want to learn more? Check out our infomercial!

[LINK TO RESOURCE LIBRARY FORM](#)

If you have any further questions please contact:  
ClaireClemons@smsd.org  
3089772@smsd.org

# Link to ROCKY'S RUNDOWN:

<https://view.gogipper.com/page/1924766>



## STUDENT ATHLETES OF THE MONTH

### • RAIDER BASKETBALL-CONOR KERRIGAN

"You have brains in your head. You have feet in your shoes. You can steer yourself any direction you choose. You're on your own. And you know what you know. And you are the guy who'll decide where to go."



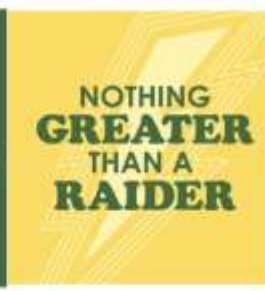
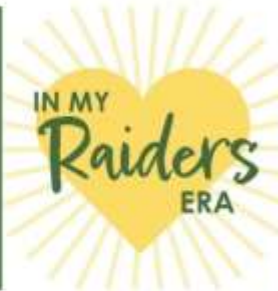
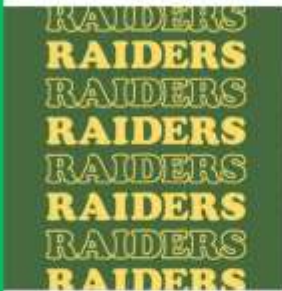
### • RAIDER SWIM & DIVE - DREW GELLHAUS



*Raiders*

# SOUTH SPIRIT BUTTONS!

**\$4 a button or 3 buttons for \$10**



## How to Purchase:

- Visit us in the cafeteria during lunch on Fridays before home basketball games.
- Find us at the Raiderdome during Friday home games.
- Stop by the Green Bean.

**Payment via venmo or cash!**

@SMS-BaseballBooster



**venmo**

# Sweetheart Dance Volunteers

<https://www.signupgenius.com/go/409094EACAA23AB9-44465771-shawnee>





sms

## SMS Sweetheart Dance February 15

**JB** Jennifer Burns

 Contact

Please review the available slots below and click on the button to sign up. Thank you!

 Share   

### Available Slot

Cases of Water Bottles

[Sign Up](#)

0 of 25 slots filled

drop off at aux gym 2/15 12-3p

# 2025 Sweetheart Court

**ADA BROWN**

**PARKER LANK**

**BENJAMIN CLAPPER**

**TARYN LOCKETT**

**COLETTE DAVIS**

**JEWELL MCCLURE**

**ISABEL DE JONG**

**MADDIE MCCOOL**

**CHARLIE EYLER**

**JASE MCDONNELL**

**BRODY FEATHERSTON**

**NICO MOORE**

**MILLIE FICKENSCHER**

**TAYLOR REASONS**

**DREW GELLHAUS**

**BRENDEN SWANSON**

**MOLLY HANNAN**

**CAROLINE SWIFT**

**NORAH HUFFMAN**

**CAITLIN WISEMAN**

**VIANNEY KARIUKI**

**MAGGIE WRIGHT**

**LIAM KIRKPATRICK**

**GRAHAM ZIEGLER**

# 2025 SMS Spirit Day Themes

2/10-2/14

TWIN DAY

MONDAY



Throwback

Thursday



TUESDAY

Teachers Dress as Students  
Students Dress as Teachers



Valentines  
Pink Out



FRIDAY

Wednesday

HOLIDAY



Each day pep club will have prizes for the best student, teacher, and group!

# WINTER DANCE FLOWER FUNDRAISER

Benefitting Shawnee Mission South Baseball Booster Club

BRANCHESANDTWIGS.COM



BRANCHES & TWIGS



ORDER BY:  
FEB 12TH

PICK UP IN  
RAIDERDOME LOBBY  
FEB 15TH 10AM-NOON





SHAWNEE  
MISSION  
SCHOOL DISTRICT

# SCAN *Here*

TO LEARN MORE ABOUT  
OUR SMSD SIGNATURE  
PROGRAMS!



SCROLL THROUGH AND LEARN  
ABOUT ALL OUR OPPORTUNITIES  
FOR STUDENTS!



PLEASE DRESS IN THE COLOR ACCORDING TO YOUR GRADE LEVEL:

6TH GRADERS - GREEN

5TH GRADERS - BLUE

4TH GRADERS - RED

3RD GRADERS - YELLOW

2ND GRADERS - PURPLE

1ST GRADERS - ORANGE

KINDERGARTNERS - PINK

**\$2 PER PERSON**

**BOOK PRIZES!**

**PURCHASABLE DINNERS from OLA CLUB**

**FEB 26TH**

**SHAWNEE MISSION SOUTH HS CAFETERIA**

**6 - 8 P.M**

# DO GOOD WITH CHIPOTLE



CHIPOTLE FUNDRAISER FOR  
**SHAWNEE MISSION SOUTH  
BASEBALL BOOSTER CLUB**

25% OF EVENT SALES GET DONATED TO THE CAUSE

---

**WEDNESDAY, FEBRUARY 19TH | 4-8PM**  
6879 W 91ST ST, OVERLAND PARK, KS, 66212

---

ORDER ONLINE FOR PICKUP USING CODE **NPR9XGN**  
OR SHOW THIS FLYER IN RESTAURANT

## HELP THE CLASS OF 2025 CELEBRATE!

### Donate to Project Graduation Today!

Project Graduation is a safe and fun party for our Seniors after graduation at Main Event. We rely on donations from the entire school to make it affordable for all Seniors!

#### Suggested Donations

Freshman families \$20

Sophomore families \$30

Junior Families \$40

Senior Families \$50

#### Ways to donate:

By **Venmo** to our Project Graduation Vice President, Mandy McDonnell. Click on the link below or scan the QR code. **In the "What's this for?" box, please put PG and the grade(s) of your student(s).** Example: PG 10, 12

<https://venmo.com/u/Amanda-McDonnell-9>

Mandy McDonnell

@Amanda-McDonnell-9



**venmo**

By check payable to **SMS Project Graduation**, in the memo area please list your student(s) grade(s) and **mail it to:**

Shawnee Mission South High School  
c/o SMS Project Graduation  
5800 W 107<sup>th</sup> Street  
Overland, Park, KS 66207



# ARIEL'S CORAL COVE PARTY

**2/22 AT 12 PM**

**\$25 for bundle\***

\*\$15 for pre-show  
party & \$10 for  
show ticket

**Party includes  
snacks, pictures,  
Meet The Cast &  
more before you  
take your seats for  
the show at 2pm!**

**Come see The Little Mermaid!**

**visit [smstheatre.com](http://smstheatre.com) or [smstheatreludus.com.ludus.com](http://smstheatreludus.com.ludus.com)  
for ticket information!**

## SM South Athletics & Activities Calendar February 10-15, 2025

Access all SM South athletics and activity event calendar with real-time updates at [www.sunflowerleague.org](http://www.sunflowerleague.org)

### Monday, February 10, 2025 – BLOCKS 1-3-5-7

7:00pm	<a href="#">Band Orchestra Concert</a>	Auditorium
1:00pm	<a href="#">Bowling: Varsity JV Meet</a>	vs. Multiple Schools.. @ <a href="#">Park Lanes</a>
5:30pm	<a href="#">Basketball: Girls C-Team League Game</a>	vs. Lawrence @ <a href="#">Lawrence High School</a>
7:00pm	<a href="#">Basketball: Boys Freshman-B Game</a>	vs. Lawrence @ <a href="#">Lawrence</a>
7:00pm	<a href="#">Basketball: Boys Freshman-A Game</a>	vs. Lawrence @ <a href="#">Lawrence</a>
7:00pm	<a href="#">Basketball: Boys Sophomore Game</a>	vs. Lawrence @ <a href="#">Lawrence</a>

### Tuesday, February 11, 2025 – BLOCKS 2 – Advisory - 4 - 6

TBD	<a href="#">Basketball: Girls JV Game</a>	vs. Lawrence @ <a href="#">Lawrence</a>
7:00am	<a href="#">NHS Meeting</a>	Auditorium
9:00am	<a href="#">Bowling: Varsity Game</a>	vs. Multiple Schools.. @ <a href="#">Olathe East Lanes</a>
4:00pm	<a href="#">Basketball: Girls JV League Game</a>	vs. Lawrence @ <a href="#">Lawrence High School</a>
5:30pm	<a href="#">Basketball: Girls Varsity League Game</a>	vs. Lawrence @ <a href="#">Lawrence</a>
5:30pm	<a href="#">Basketball: Boys JV League Game</a>	vs. Lawrence @ <a href="#">Lawrence</a>
7:00pm	<a href="#">Basketball: Boys Varsity League Game</a>	vs. Lawrence @ <a href="#">Lawrence</a>
7:00pm	<a href="#">Masterworks</a>	Auditorium

### Wednesday, February 12, 2025 – BLOCKS 1-3-5-7

### Thursday, February 13, 2025 – LATE START 2 – Advisory - 4 - 6

6:00pm	<a href="#">Basketball: Boys Sophomore Game</a>	vs. Lawrence Free State @ <a href="#">Shawnee Mission South High School</a>
7:30pm	<a href="#">Basketball: Boys Freshman-A Game</a>	vs. Lawrence Free State @ <a href="#">Shawnee Mission South High School</a>

### Friday, February 14, 2025 – BLOCKS 1-3-5-7 – Pep Assembly

TBD	<a href="#">Forensics: JV/V Tournament</a>	vs. Lansing @ <a href="#">Lansing High School</a>
12:45pm	<a href="#">Bowling: Varsity Game</a>	vs. Multiple Schools.. @ Mission Bowl N'Olathe
3:45pm	<a href="#">Basketball: Girls JV Game</a>	vs. Lawrence Free State @ <a href="#">Shawnee Mission South High School</a>
5:30pm	<a href="#">Basketball: Girls Varsity Game</a>	vs. Lawrence Free State @ <a href="#">Shawnee Mission South High School</a>
5:30pm	<a href="#">Basketball: Boys JV Game</a>	vs. Lawrence Free State @ <a href="#">Shawnee Mission South High School</a>
7:00pm	<a href="#">Basketball: Boys Varsity Game</a>	vs. Lawrence Free State @ <a href="#">Shawnee Mission South High School</a>

**Saturday, February 15, 2025**

[Sweetheart Dance](#)

Auxiliary Gym

9:00am

[Wrestling: Girls Varsity Regionals](#)

vs. Multiple Schools.. @ [Shawnee Mission Northwest High School](#)

