

# PANTHER CUB NEWS

Where everyone matters and every moment counts.

**Carolina Forest Elementary School**  
285 Carolina Forest Boulevard  
Myrtle Beach, SC 29579

**Dennis Devorick, Principal**  
Phone: (843) 236-0001  
Fax: (843) 236-0152

**Please check our  
Facebook page for  
important information.  
Click the picture below  
to access!**



**Feb. 28,  
2025**

## Upcoming Events

**March 3-7 - Read Across America Week**

**March 4 - Virtual PTO Meeting @ 6pm**

**March 7 - Kona Ice @ Recess (Gr.1-5)**

**March 18 - MOD Pizza Spirit Night**

**March 20 - MAP Reading (Gr. 3-5)**

**March 26 - End of Quarter 3**

**March 26 - Spring Picture Day**

**Math 27 - MAP Math (Gr. 3-5)**

**April 1 - Art Show**

**Please bring driver's  
license when dropping off  
and picking up students  
for early dismissal.**

**(Please pick up students  
BEFORE 2:00 pm for early  
dismissal)**

## Reminder!

**Please e-mail attendance  
([cfeattendance@horrycountyschools.net](mailto:cfeattendance@horrycountyschools.net))  
if your child is going to be out sick. YOU  
DO NOT NEED TO CALL THE SCHOOL.  
Thank you!**

Please do not bring toys or other items (ex. pokemon cards) to school for trading. The school is not responsible for extra items that students bring.



## PARENTS,

CFE is collecting pop tabs for Ronald McDonald House Charity from now until spring break!

Bring your pop tabs into Carolina Forest Elementary, for the Grade level pop tab wars.

THE GRADE LEVEL THAT COLLECTS THE MOST POPS TABS WILL CELEBRATE WITH A POPSICLE PARTY!



We are also accepting other donations for RMHC!

Other donation items they accept:

Kitchen items, office supplies, personal care items, house hold supplies, and non-perishable canned goods!

# We ♥ our Volunteers

Please fill out our volunteer application by clicking on the picture below. Please make sure you choose CFE as your school!



## Attendance Information:

- Please email [cfeattendance@horrycountyschools.net](mailto:cfeattendance@horrycountyschools.net) regarding any attendance information. (i.e. absences, illnesses, medical notes, questions, etc.)
- Students not seated in their classrooms prior to the 7:35 am tardy bell are considered tardy and will be sent to the front office for a tardy slip. Students that are pulled out of class for an early release, prior to dismissal at 2:35pm, will be marked unexcused early release. Tardies and early releases will be excused if a doctor's note is provided.
- Please refer to the [Carolina Forest Elementary website](#) to review the attendance policy summary.

Please check the lost and found for any missing items. Items not claimed are donated monthly to charity.





[Click here for the breakfast menu.](#)

[Click here for the lunch menu.](#)

*\*Subject to change due to product availability\**



**Kona Ice is sold  
during recess on  
the first Friday of  
every month!**

**Grades 1-5 only.**



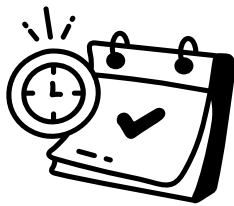
**The spirit rock is available to rent daily for a nonrefundable fee of \$25.00. Payments must be made in person with Dr. Robertson at the cub camp desk between 2:30 and 5pm. You may pay by cash or check - no electronic payments are accepted.**

**\*\*For complete policies and procedures, please click here.\*\***

All transportation changes need to be received by the front office either by fax (843-236-0152) or email (cfetransportation@horrycountyschools.net) by 1:00 pm daily. We will not be able to make transportation changes after that time. All faxed changes must include copy of parent's drivers license.

**Reminder: Daily transportation changes should be for EMERGENCY PURPOSES ONLY. Students CANNOT ride home on a bus with a friend due to bus overcrowding. We cannot accept transportation changes over the phone.**





There will be a virtual PTO meeting held on Tuesday, March 4th at 6pm. We hope to see you there!

[Click here for the link.](#)



No outside food for lunches except what is packed from home.  
Thank you!

## CAROLINA FOREST ELEMENTARY

### ORDER YOUR YEARBOOK TODAY!

**\$25**



**LOG INTO MY PAYMENTS PLUS TO PURCHASE, BEFORE THE PRICE INCREASES!**

\*\*Price is \$25 until March 14th. after that, price will increase to \$35. No extra copies will be available. \*\*



## Cub Camp Openings!

Our after school program, Cub Camp, currently has openings for all grade levels. Enrollment for the 2025-2026 school year will begin on Monday, March 3rd.

Please contact Dr. Julia Robertson with any questions.

[jrobertson001@horrycountyschools.net](mailto:jrobertson001@horrycountyschools.net) -- (843) 602-9144

### Monday, March 3 - Dr. Seuss Day 📖

Dress in Seuss theme clothing/characters

### Tuesday, March 4 - Wild About Reading 🐾

Wear animal print or Lion King outfits

### Wednesday, March 5 - Read My Shirt Day 📖

Make sure your clothes have lots of words to read!

### Thursday, March 6 - Pete the Cat Day 📖

Dress in Blue or a shirt with lots of buttons

### Friday, March 7 - Knuffle Bunny Day 🐰

\$1 to bring a stuffed animal today! The money will be used to support Relay for Life



# The 2025 Science Fair will be held on May 1st from 5-7pm.



If you are interested in participating, scan the QR code or click [here](#) for all of the information you will need -- for both parents and children. The last page will need to be printed out and turned into Mrs. Butler or Mr. Manemeit to be a participant.

## YLI CAMPS

beyond words,  
beyond summer

**REGISTER: SUMMER 2025**

**Weekly Sessions JUNE - AUGUST**

**EARLY BIRD RATE**  
Sign up before April 1, 2025, to receive a \$50 discount.

[www.YLICamps.com](http://www.YLICamps.com)

Clemson University is an Affirmative Action/Equal Opportunity employer and does not discriminate against any individual or group of individuals on the basis of age, color, disability, gender, national origin, race, religion, sexual orientation, veteran status or genetic information.

**CUMI**  
CLEMSON UNIVERSITY LEARNING INSTITUTE

### SUMMERTON, SC

#### 4-H SUMMER

**Ages: 8-14** | A South Carolina summer camp tradition that includes a jam-packed week filled with team sports, paintball, archery, ropes course, climbing tower, stand-up paddleboards, arts and crafts, talent show, tubing and more!

#### SEWEE

**Ages: 8-14** | A low country favorite reimaged for lakeside exploration, Camp Sewee is back! Explore the wonders of marine science along the shores of Lake Marion while taking part in a variety of excursions including tubing, the Charleston aquarium, waterpark, and more!

#### WILDLIFE

**STANDARD | Ages: 8-14 ADVANCED | Ages: 10-16**  
Shoot, cast, and swim at Camp Wildlife — the ultimate summer camp experience for kids who love the great outdoors! Based on age and skill level, outdoor activities include swimming, fishing, archery, riflery, clay shooting, hunter education, and more!

### UPSTATE, SC

#### VOYAGER

**PICKENS, SC | Ages: 9-15** | The digital world meets the real world in a summer adventure packed with technology, adventure activities, games and more! Whether campers are conquering the vertical playground, exploring virtual reality with Oculus Quest, or piloting a Drone, Camp Voyager is sure to be an adventure like no other!

#### ADVENTURE

**SUNSET, SC | Ages: 10-16** | Six days of extreme outdoor adventure: hiking, rock climbing, zip line canopy tour, rafting and more in the Blue Ridge Mountains of North and South Carolina!

[www.YLICamps.com](http://www.YLICamps.com)  
Clemson University Learning Institute  
698 Concord Church Rd, Pickens, SC 29671  
(864) 878-1103 | [info@ylicamps.com](mailto:info@ylicamps.com)

**REGISTER TODAY!**

All activities are subject to change, depending on weather, site availability or acts of third parties beyond our control.

## Child Development & Kindergarten Registration

### 4-Year Old Child Development

Kindergarten & First Grade Students NEW to Horry County Schools

Starting: March 24th, 2025

Register online [www.horrycountyschools.net](http://www.horrycountyschools.net)

Upload your proof of residency (current utility bill in the parent's name), your child's immunization record, birth certificate, social security card (requested but not required), and parent's driver's license.

**For CD Registration you must also have either Medicaid documentation or the front page of your 2024 Income Tax Return.**

**Important: Your child must be:**

4 years old on or before September 1, 2025, to be in the 4-year old program

5 years old on or before September 1, 2025, to be in Kindergarten

6 years old on or before September 1, 2025 to be in 1st grade

Screening date and times for the 4 year old Child Development Program will be given after registration is complete.

(No screening appointments will be given without the required documentation)

**\*\* RETURNING STUDENTS WILL REGISTER MAY 1, 2025 \*\***

## Spring LAX 6x6 League



### Dune Warriors Lacrosse Spring 2025 6v6 League

**Who:** Boys and Girls ages 6 - 12

**Where:** Practices and games will be held on Ashley Booth Field & the Myrtle Beach High School Practice Field.

**When:** Tuesdays and Thursdays, 5-6:30 p.m.

**Start Date:** Tuesday, March 4

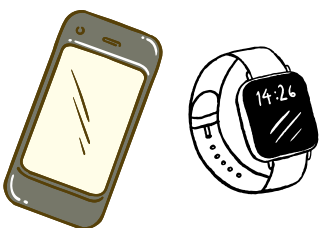
**End Date:** Thursday, May 8

**Registration Date:** Monday, February 3

**FEES** | City Residents: \$50  
Non-City Residents: \$100



For more information, contact Kelly Suarez at (843) 918-2270.



# HCS Electronic Device Policy

## **HORRY COUNTY SCHOOLS PERSONAL ELECTRONIC DEVICE POLICY**

The purpose of this policy is to create a phone-free school environment that fosters a positive learning experience free from electronic distractions. By prohibiting the use of personal electronic devices during the school day, this policy aims to provide an environment that enhances focus and engagement, allowing students to develop the college and career-ready skills outlined in the Profile of the South Carolina Graduate. Students will have more opportunities to engage in meaningful interactions, collaborate with peers, and cultivate the essential skills necessary for success in college, careers, and life.

This policy has been developed in compliance with the General Appropriations Bill, H. 5100 of 2024, Proviso 1.103 and is applicable to grades kindergarten through twelve for the 2024-2025 school year.

Proviso 1.103 (SDE: Anti-Bullying/School Safety) To receive state funds allocated for State Aid to Classrooms, a school district shall implement a policy adopted by the State Board of Education that prohibits access to personal electronic communication devices by students during the school day. For purposes of this provision, a personal electronic communication device is considered to be a device not authorized for classroom use by a student, utilized to access the Internet, wi-fi, or cellular telephone signals.

### **I. Definitions:**

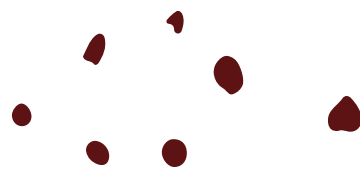
A. "Personal Electronic Device," hereinafter referred to as "device," means any device utilized to access the internet, wi-fi, cellular telephone signals, or to capture images or video. This includes, but is not limited to, cell phones, smart watches, tablets, and gaming devices.

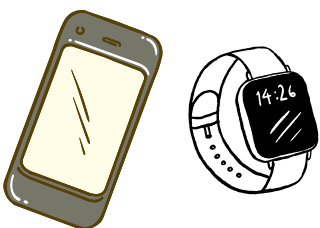
B. "Personal Electronic Device Accessories," hereinafter referred to as "device accessories," include any wired or wireless accessory or wearable technology that connects to a device and any other accessory commonly used in conjunction with a personal electronic device.

C. "School Day" is defined as the period of time that a student is present on the school campus from their arrival (i.e., tardy bell) until afternoon dismissal at the end of the instructional day. This policy may also apply to school buses, field trips, and athletic events. The applicability of this regulation to these activities will be determined by the school district.

D. "Access" is defined as viewing, holding, wearing, or otherwise using a device for the purpose of communication, internet access, gaming, recording, or any other function commonly associated with devices. During the school day, devices should be powered off and stored as directed by the school district. Exceptions granted for medical necessity, authorized for classroom use, or other authorized reasons should be in writing and are not considered violations of this definition.

E. "Authorized for Classroom Use" is defined as the use of a personal electronic device that is explicitly approved by the District Superintendent or his/her designee in writing. The approval must include alignment with a standards-aligned educational objective that cannot be reasonably achieved using district-owned devices. Students must be provided with clear instructions on the appropriate use of devices and ensure that their use aligns with the approved educational objectives. The District Superintendent or his/her designee may revoke approval at any time if it is determined that their use does not meet the intended educational objectives or is causing disruptions.





## II. Policy Implementation and Enforcement:

A. During the school day, students are prohibited from accessing their personal electronic devices, unless authorized for classroom use. Students may not wear or access device accessories during the school day. Students must store their devices and device accessories in lockers, backpacks, or otherwise as directed by the school district during the school day. Districts may forbid student possession of devices and device accessories on school property.

B. In a national or state testing environment, all personal electronic devices must be powered off and stored away for the student who is testing. Failure to comply with this requirement will be cited as a testing violation and may render all completed tests as invalid.

C. Electronic devices may not be used in locker rooms, bathrooms, or other locations where the presence of such devices poses an unreasonable risk to the safety, welfare, or privacy of others.

D. If explicitly required by a student's IEP, Medical Plan, or 504 plan, the student shall be allowed to access their personal electronic device for medically or educationally necessary purposes described and required for administration of the IEP, Medical Plan or 504 plan.

E. A student who is a member of a volunteer firefighting organization or emergency organization may be authorized to carry a device with written permission from the District Superintendent or his/her designee.

F. Personal electronic devices may be used while traveling for a field trip or athletic event regardless of the time of day. Personal electronic devices may also be used while traveling to and from school on district provided bus transportation. Students may not use personal electronic devices to access inappropriate material, taking pictures of other students without permission, texting inappropriate information to others, or making inappropriate phone calls while on a field trip, athletic event, or to and from school on a district provided bus transportation.

G. If the school experiences an emergency situation, the administration may determine that students should be allowed access to their personal electronic device for the purpose of communication with parents/guardians.

H. If a student violates the preceding rules during the school day, the student will be subject to progressive consequences in the student code of conduct and disciplinary enforcement procedures.

### **HCS ELEMENTARY SCHOOLS (CD-5 grade)**

Students who attend an HCS Elementary School may not have personal electronic devices or accessories visible or powered on during the school day or while they are on the school campus. This school day is defined as when they enter the school building and ending when the dismissal bell sounds. These devices include cell phones and all other personal electronic devices and accessories including, but not limited to, air pods, smart watches, tablets, wireless earbuds, handheld gaming devices, etc.

These devices **MUST** be stored in the student's clear bookbag and must be powered off once students enter the building and remain off and out of sight until the end of the school day. Schools are not responsible for lost, stolen, or damaged devices.

For every cell phone/electronic device violation, the following will apply:

- Parents/guardians will be contacted.
- When confiscated, cell phones/electronic devices will be stored in a secure location until the parent is able to retrieve it.
- A parent/guardian must pick up the cell phone/electronic device from the front office (times determined by school).

Disciplinary consequences:

- 1st violation: Warning, Parent Contact
- 2nd violation: Warning, Parent must pick up the confiscated device.
- 3rd violation: 1 day ISS, Parent must pick up the confiscated device.
- 4th violation: 2 days ISS, Parent must pick up the confiscated device.
- 5th violation: 1 day OSS, Parent must pick up the confiscated device.

# School Attendance

**Section 59-65-10.** All parents or guardians shall cause their children or wards to attend regularly a public or private school or kindergarten of this State which has been approved by the State Board of Education or a member of the South Carolina Independent Schools' Association or some similar organization, or a parochial, denominational, or church-related school, or other programs which have been approved by the State Board of Education from the school year in which the child or ward is five years of age before September first until the child or ward attains his seventeenth birthday or graduates from high school.

## Attendance Intervention Plans

When a child is determined to be truant, school officials will make every reasonable effort to meet with the parent(s) or guardian(s) to identify reasons for the student's continued absence. These efforts may include telephone calls and home visits, both during and after normal hours, as well as written messages and emails. School officials must develop a written "intervention plan" to address the student's continued absence in conjunction with the student and the parent(s) or guardian(s). It is the goal of HCS that each child succeeds academically. Regular school attendance gives children a solid foundation for a successful future.

### Definition of Lawful (excused) Absences are defined as:

\*Students who are ill and whose attendance in school would endanger their health or the health of others; illness verified by a medical note (must have the date & time seen) from a physician turned in to the attendance office within three (3) days of the student's return to school (we do not accept blanket notes). (SC-Med) Medical. Online medical visits with medical notes and/or screen shots that contain the student's name, date of birth, and results of the online visit (prescription, number of days out before the student's return to school, etc.)

\*Student in which a member of his or her immediate family is seriously ill or passes away documented by a statement from the family member's physician or a copy of the death announcement, obituary, or program of the funeral service. (SC-BRV) Bereavement.

\*Students who are absent for recognized major religious holidays of their faith may be excused if a request is made in writing to the principal and written approval is received prior to the absence. (SC-REL) Religious.

\*Prearranged absences for other reasons and/or extreme hardships at the discretion of the principal; these must be submitted to the attendance office in advance on a completed Request for Principal Approval Form which can be obtained from the attendance office at the school. (SC-PA) Principal Approval/Educational Trip or Hardship

### Definition of Unlawful absences are defined as:

\*Student who are willfully absent from school without the knowledge of their parents.

\*Student who are absent from school without acceptable cause with the knowledge of their parent.

\*Religious-based camps, retreats or conference.

#### Promotion/Retention policies are separate from Truancy regulations.

\*To be promoted to the next grade or receive a credit for high school courses, students may not be absent from school or class for more than 10 days for yearlong courses or 5 days for semester courses.

\*Saturday/Make Up school: Allows student to make up seat time/instructional days but does not clear up truancy.

**Code in PS:** (SC-REC) Recovery/Make up School



## Truancy

**Truant:** A child ages 6 to 17 years meets the definition of a truant when the child has three (3) consecutive or five (5) or more total all-day absences unless the absences are excused by a medical doctor's written statement, proof of bereavement, or principal's approval.

**Habitual Truant:** A "habitual" truant is a child, ages 12-17 years who fails to comply with the intervention plan developed by the school, the child and the parent(s) or guardian(s) and who accumulates two or more additional unlawful absences, days tardy, and/or early releases.

**Chronic Truant:** A "Chronic" truant is a child ages 12 to 17 years who has been through the school intervention process, has reached the level of a "habitual" truant, has been referred to Family Court and placed on an order to attend school, and continues to accumulate unlawful absences.

**Lawful/Excused Codes in PS:** Lawful/Excused Codes in PS: (SC-EX) Excused by Principal/Homelessness; (SC-ONST) Guidance; (SC-HMBD) Medical Homebound; (SC-HBSD) Home-based; (SC-LEG) Judicial; (SC-COL) College Visit, pre-approved by principal; (SC-FT) Field Trip/School Sponsored; (SC-AH) disciplinary hearing; (SC-WTHR) inclement weather/district closing; (SC-BTRD) bus tardy; (SC-ETRD) tardy with lawful excuse; (SC-CKIN) leave & return the same day; (SC-FLU) Flu- Influenza; (SC-IMNZ) Immunization; (SC-COVID) Student who tests positive or in close contact with someone who tested positive; (SC-NURS) Nurse sends student home and/or informs them to stay home another day; (SC-VTP) Students logs in & attends virtually & completes their assignments. (SC-VIRM) make-up seat time virtually or take-home packets. (SC-MIL) Immediate family member being deployed. (SC-IMHB) Student approved by the Health Services Director to receive services for students with medical conditions that intermittently causes them miss school.

#### Unlawful/Unexcused Codes in PS:

(SC-UNEX) Unexcused/Unverified; (SC-UEPN) parent note; (SC-UTRD) Unexcused tardy; (SC-DSML) early sign out but present less than 50% of the day; (SC-UEDM) early sign out same as unlawful tardy; (SC-SKIP) M/HS only, student cuts a class(es), not all day absence; (SC-LATE) ES only, student arrives after 50% of block or school day; (SC-REC) Recovery/Make up School



# 2024-25 Calendar

## August 2024

S	M	T	W	T	F	S
				1	2	3
4	5	6	7	8	9	10
11	12	13	14	15	16	17
18	19	20	21	22	23	24
25	26	27	28	29	30	31

## September 2024

S	M	T	W	T	F	S
1	2	3	4	5	6	7
8	9	10	11	12	13	14
15	16	17	18	19	20	21
22	23	24	25	26	27	28
29	30					

## October 2024

S	M	T	W	T	F	S
		1	2	3	4	5
6	7	8	9	10	11	12
13	14	15	16	17	18	19
20	21	22	23	24	25	26
27	28	29	30	31		

## November 2024

S	M	T	W	T	F	S
					1	2
3	4	5	6	7	8	9
10	11	12	13	14	15	16
17	18	19	20	21	22	23
24	25	26	27	28	29	30

## December 2024

S	M	T	W	T	F	S
1	2	3	4	5	6	7
8	9	10	11	12	13	14
15	16	17	18	19	20	21
22	23	24	25	26	27	28
29	30	31				

## January 2025

S	M	T	W	T	F	S
			1	2	3	4
5	6	7	8	9	10	11
12	13	14	15	16	17	18
19	20	21	22	23	24	25
26	27	28	29	30	31	

## February 2025

S	M	T	W	T	F	S
						1
2	3	4	5	6	7	8
9	10	11	12	13	14	15
16	17	18	19	20	21	22
23	24	25	26	27	28	

## March 2025

S	M	T	W	T	F	S
						1
2	3	4	5	6	7	8
9	10	11	12	13	14	15
16	17	18	19	20	21	22
23	24	25	26	27	28	29
30	31					

## April 2025

S	M	T	W	T	F	S
		1	2	3	4	5
6	7	8	9	10	11	12
13	14	15	16	17	18	19
20	21	22	23	24	25	26
27	28	29	30			

## May 2025

S	M	T	W	T	F	S
				1	2	3
4	5	6	7	8	9	10
11	12	13	14	15	16	17
18	19	20	21	22	23	24
25	26	27	28	29	30	31

## June 2025

S	M	T	W	T	F	S
1	2	3	4	5	6	7
8	9	10	11	12	13	14
15	16	17	18	19	20	21
22	23	24	25	26	27	28
29	30					

First day of school: Aug. 19

Last day of school: June 6

Last day for teachers: June 9

Schools Closed

Schools Closed/Possible Make-up Days

Teacher Work/Staff Development Days - Student Holidays

Additional Staff Development Day for Teachers - Approved by the Board

2 1/2 Hour Early Dismissal for Students

Teacher Work/Staff Development Days - Student Holidays (Possible Make-up Days)

Any non-instructional day, including Saturdays, may be considered a make-up day, due to school cancellation.