

Town of West Hartford - December 2022 Tree Inventory | 2022



Submitted by:
Bartlett Tree Experts

Casey Tresp, Field Consulting Arborist

ISA Certified Arborist #NE-1082A
Connecticut Arborist S-6009
TRAQ Qualified, CTSP #02464

Joshua Lehmann, Arborist Representative

CT Arborist License S-6602



Bartlett Tree Experts
Simsbury Office
1250 Hopmeadow Street
Simsbury, Connecticut 06070-1407
704-588-1503
www.bartlett.com

EXECUTIVE SUMMARY

In December 2022, the Bartlett Inventory Solutions (BIS) Team from Bartlett Tree Experts conducted an inventory of trees on Farmington Ave (from Walden including the intersection to South Main St), Lasalle Rd (from Farmington Ave to Ellsworth, including the intersection), South Main St (from Farmington Ave going south to pedestrian crosswalk), and trees located on the Unity Green, on the Town of West Hartford site. We identified 98 trees which included 8 species. The attributes that we collected include tree latitude and longitude, size, age and condition class, and a visual assessment of tree structure, health, and **vigor**.

We conducted the attribute collection using a sub-meter accuracy Global Positioning Satellite Receiver (GPSr) device with an error-in-location potential of not greater than three meters. All tree work activities will comply with current American National Standards Institute (ANSI) Z133.1 requirements for safety.

INTRODUCTION

In December 2022, Brooke Nelson of the Town of West Hartford retained Bartlett Tree Experts to perform an inventory of trees on Farmington Ave (from Walden including the intersection to South Main St), Lasalle Rd (from Farmington Ave to Ellsworth, including the intersection), South Main St (from Farmington Ave going south to pedestrian crosswalk), and trees located on the Unity Green site. Team member Casey Tresp visited the site on December 8th 2022 to conduct the inventory.

The inventory included:

- identifying trees and assigning a Tree ID number (Tree ID numbers ranging from 1 to 98);
- identifying the trees' condition, health, and vigor;
- mapping the trees using GPSr hardware and Geographic Information System (GIS) software, and Bartlett Tree Experts' ArborScope™ web-based management system

The methods and procedures we used to make the above determinations and recommendations are detailed in the following sections.

DATA COLLECTION & TREE INSPECTION METHODOLOGY

In conducting the inventory, we used specialized equipment and software and followed specific procedures to determine tree characteristics, risk evaluations, and recommendations. The following explanation will assist the reader in interpreting the findings of this management plan.

Data Collection Equipment & Attribute Data

The Inventory Team used Trimble® Geo GPSr hardware units, TerraSync® and GPS Pathfinder® Office GIS software, and Bartlett Tree Experts' ArborScope™ web-based management system to inventory the trees. The attribute data we collected on site are listed below.

- botanical name and regional common name according to local ISA Chapter Tree Species List
- tree location based on GPS coordinate system
- tree ID number
- diameter at breast height (**DBH**)
- age class
- height class
- condition class
- noted defects/observations
- observed pests/diseases

Specifications/Definitions

Age Class

New Planting	Tree not yet established
Young	Established tree but not in the landscape for many years
Semi-mature	Established tree but has not yet reached full growth potential
Mature	Tree within its full growth potential
Over-mature	Tree that is declining or beginning to decline due to its age

Height Class

Small	Less than 15 feet
Medium	15 to 40 feet
Large	Greater than 40 feet

Condition Class

Dead	
Poor	Most of the canopy displays dieback and undesirable leaf color, inappropriate leaf size or inadequate new growth. Tree or parts of tree are in the process of failure.
Fair	Parts of canopy display undesirable leaf color, inappropriate leaf size, and inadequate new growth. Parts of the tree are likely to fail.
Good	Tree health and condition are acceptable.

STAND DYNAMICS RESULTS



STAND DYNAMICS RESULTS

In reviewing the results and recommendations, the reader will find useful the specifications and definitions detailed in the preceding methodology above. We used the following categories to organize the stand dynamics results, which are displayed in tables:

- **Subject Trees Summarized According to:**
 - Tree Species Identified
 - Condition Class
 - Age Class
 - Tree Size per DBH
 - Estimated Tree Asset Value

Stand Dynamics

Tree Species Identified

Our inventory revealed 8 species of trees, as detailed in the following table:

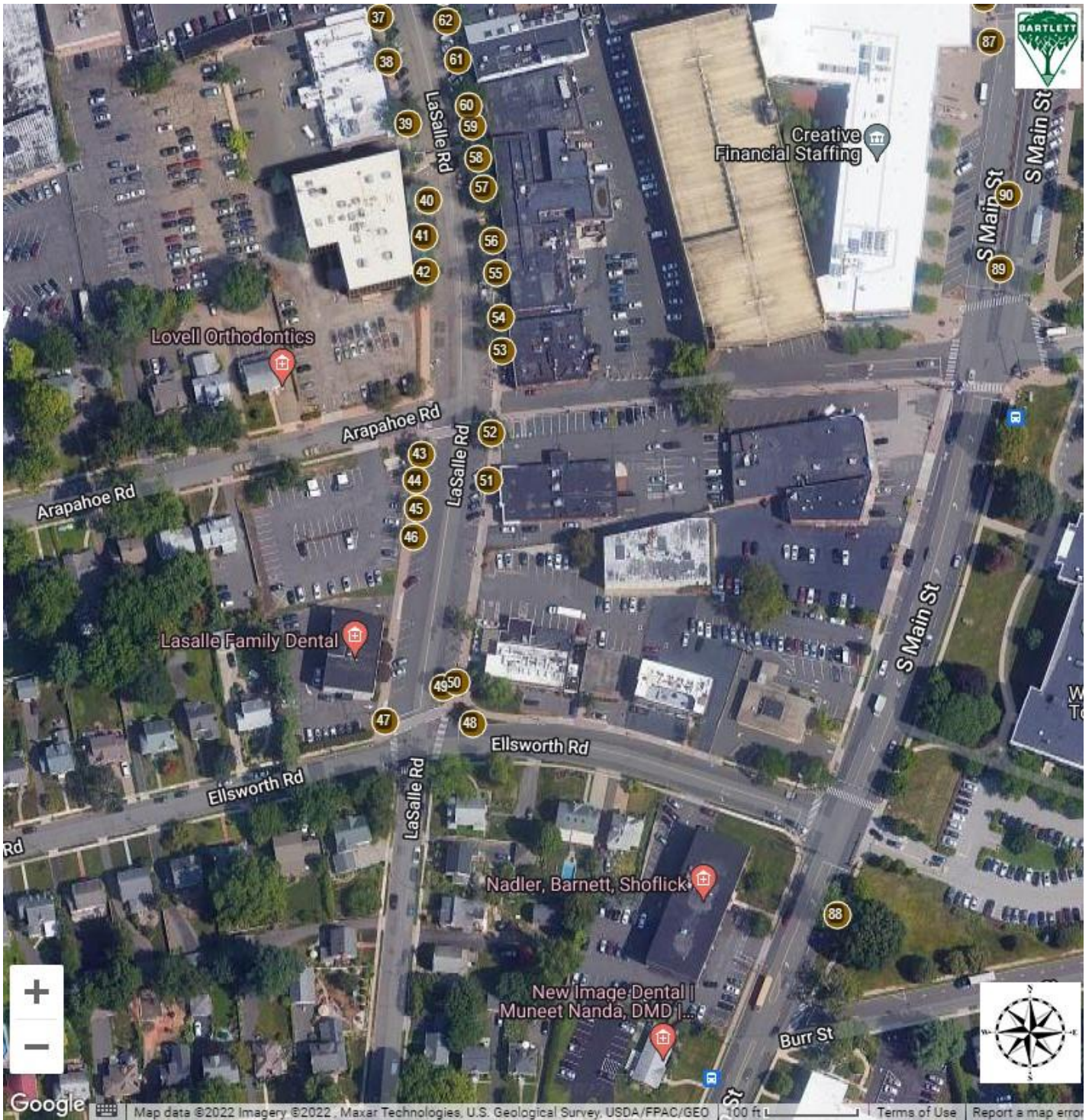
TREE SPECIES IDENTIFIED

Genus	Species	Common Name	Count	% Distribution Total
<i>Acer</i>	<i>platanoides</i> var. 'Crimson King'	Maple-Crimson King	2	2%
	<i>saccharinum</i>	Maple-Silver	1	1%
Acer Total			3	3%
<i>Gleditsia</i>	<i>triacanthos</i> var. <i>inermis</i>	Honeylocust-Thornless Common	83	85%
<i>Malus</i>	sp.	Crabapple	2	2%
<i>Pyrus</i>	<i>calleryana</i>	Pear-Callery	3	3%
<i>Quercus</i>	<i>palustris</i>	Oak-Pin	3	3%
<i>Ulmus</i>	<i>americana</i>	Elm-American	1	1%
	<i>parvifolia</i>	Elm-Chinese	3	3%
Ulmus Total			4	4%
Grand Total			98	100%

2022 TREE INVENTORY NORTH



2022 TREE INVENTORY SOUTH

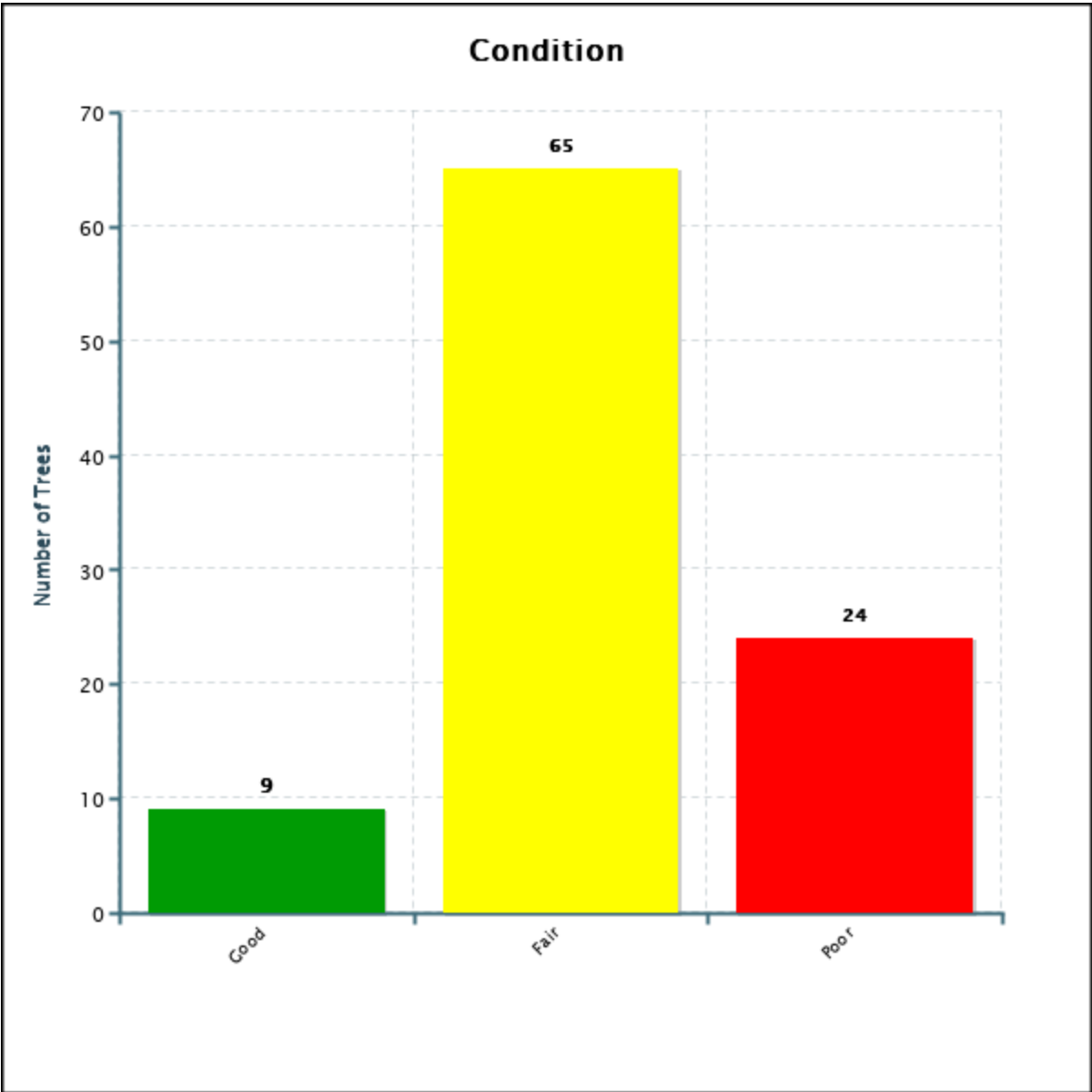


Condition Class

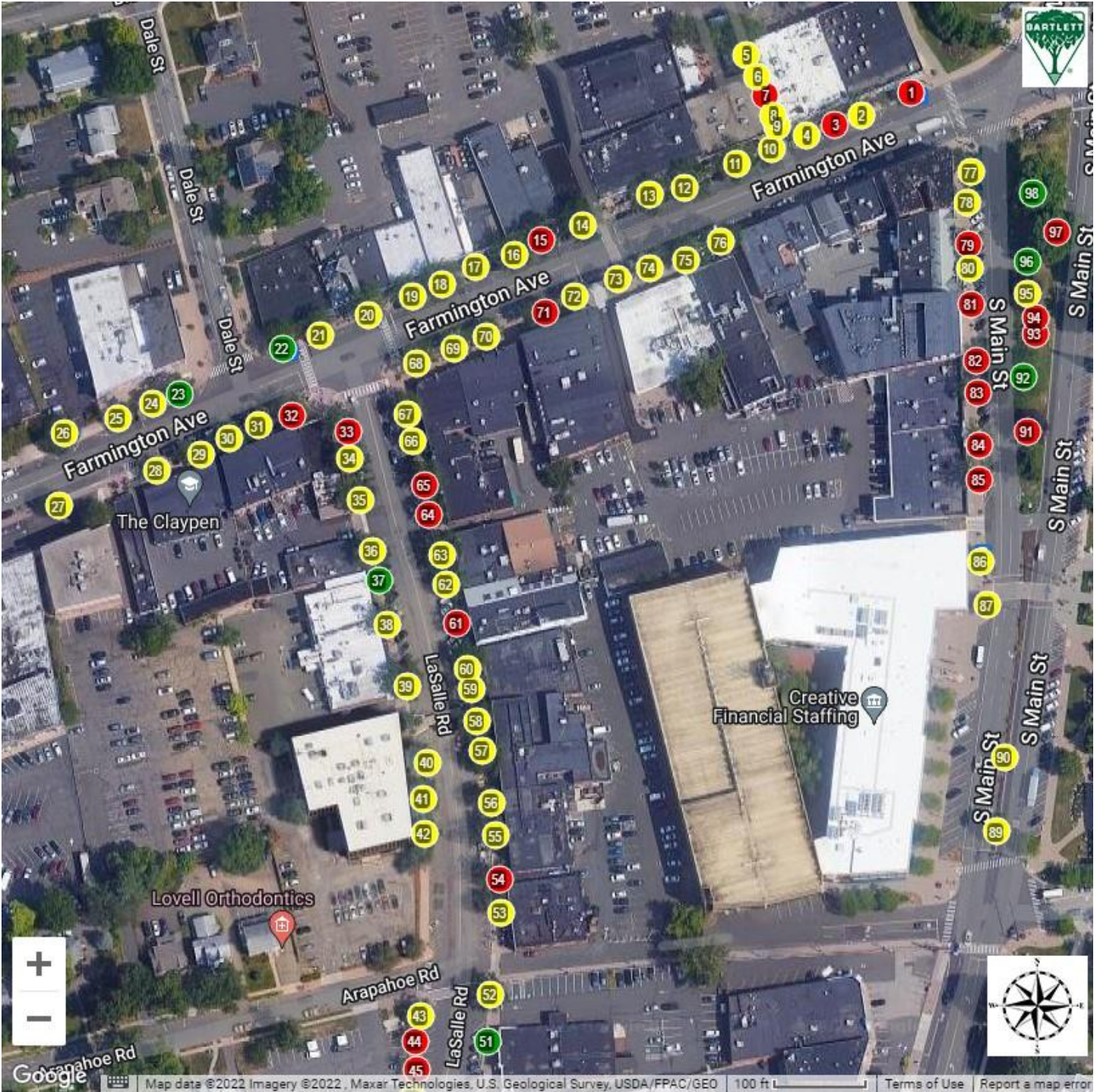
The breakdown of tree condition follows:

CONDITION CLASS BREAKDOWN

Condition Class	Quantity	% of Total
Good	9	9%
Fair	65	66%
Poor	24	24%



INVENTORIED TREES BY CONDITION CLASS NORTH



INVENTORIED TREES BY CONDITION CLASS SOUTH



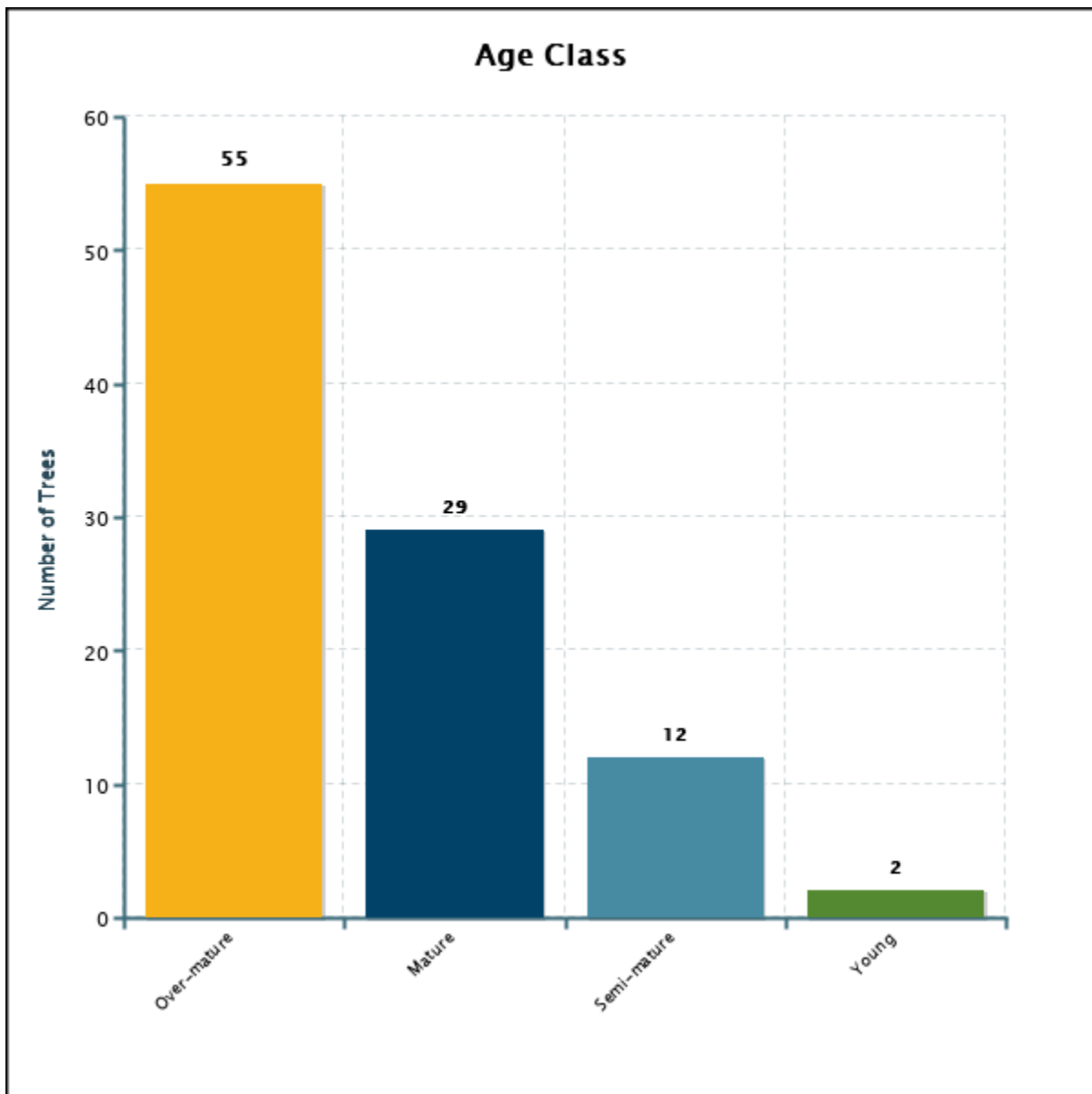
Condition: ● Good ● Fair ● Poor

Age Class

The breakdown of tree age class follows:

AGE CLASS BREAKDOWN

Age Class	Quantity	% of Total
Over-mature	55	56%
Mature	29	30%
Semi-mature	12	12%
Young	2	2%



INVENTORIED TREES BY AGE CLASS NORTH



Age: ● Young ● Semi-mature ● Mature ● Over-mature

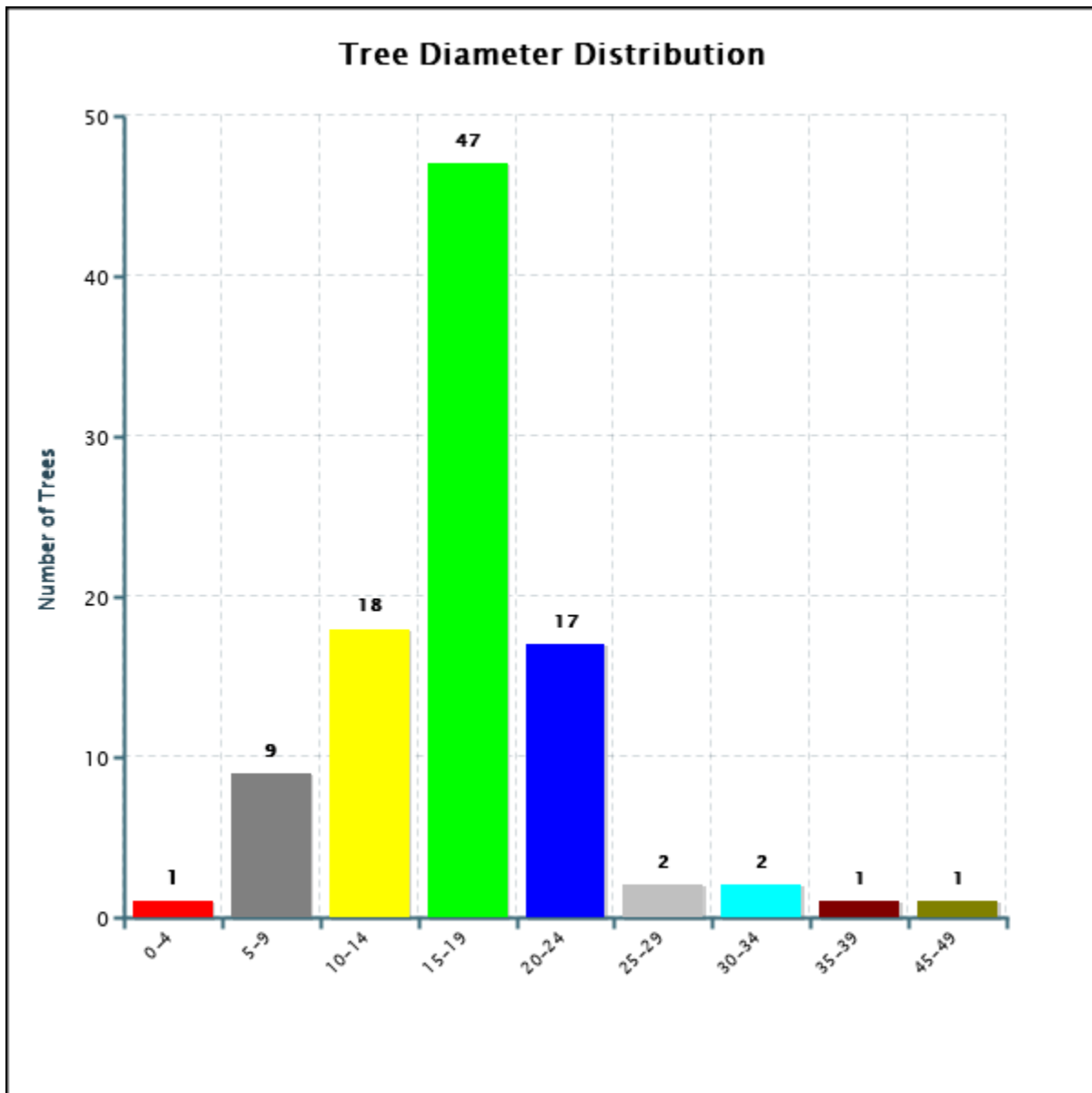
INVENTORIED TREES BY AGE CLASS SOUTH



Age: ● Young ● Semi-mature ● Mature ● Over-mature

Tree Size (DBH)

The following chart illustrates numbers of trees according to size per DBH:



Estimated Tree Asset Value

As part of the Bartlett inventory process, we have included an Estimated Tree Asset Value for each tree and a cumulative total for all trees inventoried. We use an average per square inch nursery price, size (DBH), species factor, condition factor, and location factor to estimate the tree asset value. This is not intended to replace a tree appraisal.

The following data fields are used in this formula:

Data Field	Description
Average Per Square Inch Nursery Price	Based on the average nursery prices for two common tree species and one exotic tree species within a region, then taking the average of those three as the average per square inch price for the region
Size	Based on tree DBH (4.5 feet above grade)
Species Factor	Relative species desirability based on 100% for the tree in that geographical location. In most cases, species desirability ratings, published by the International Society of Arboriculture, are used for adjustment.
Condition Factor	Rating of the tree's structure and health based on 100%
Location Factor	Average rating for the site and the tree's contribution and placement, based on 100%

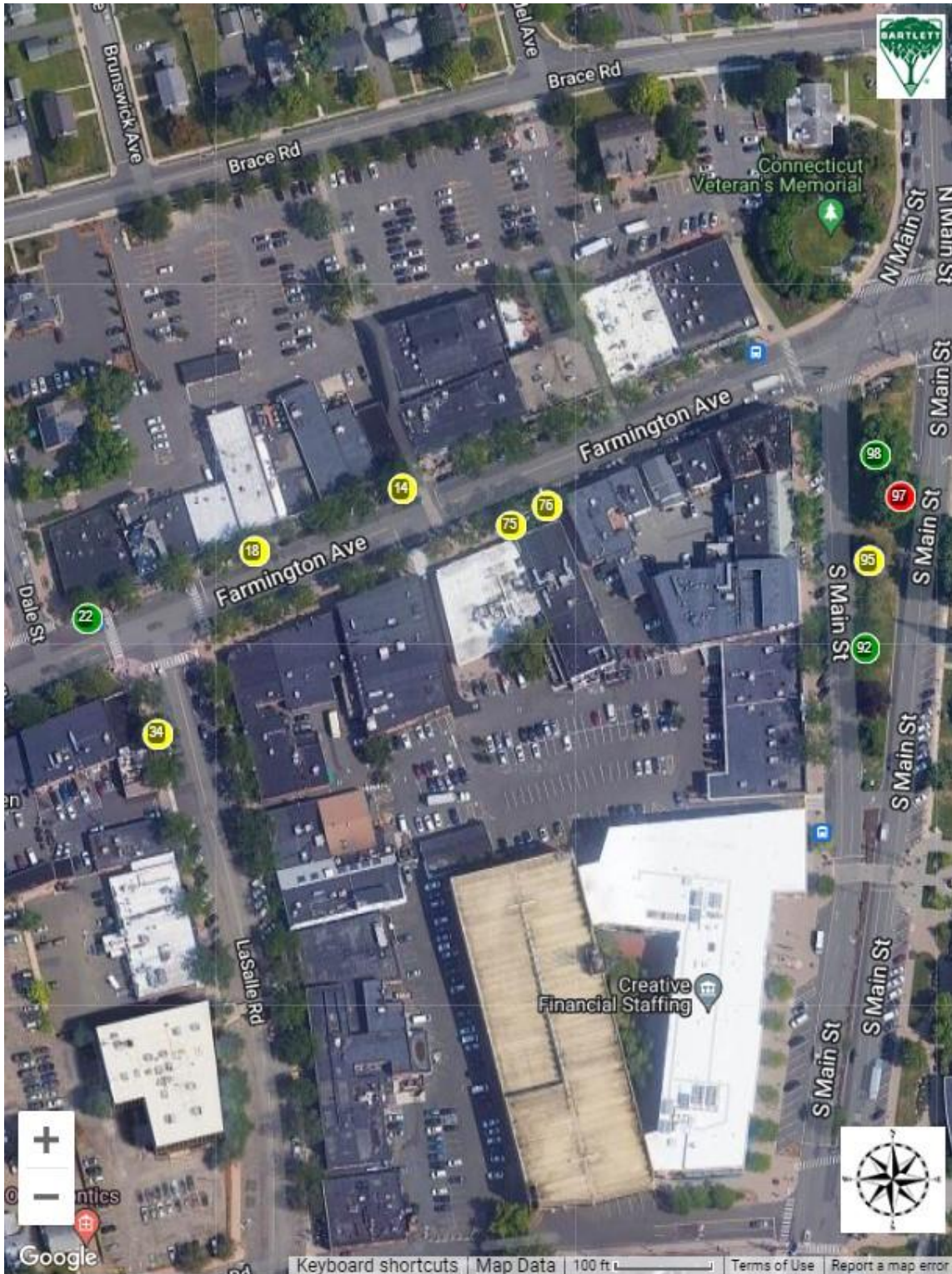
$$\text{Estimated Tree Asset Value} = (\text{Average Per Square Inch Nursery Price} * \text{Size}) * \text{Species Factor} * \text{Condition Factor} * \text{Location Factor}$$

The estimated cumulative total value for all trees inventoried is **\$448,349.73**. The following table lists the ten trees with the highest Tree Asset Values:

TOP TEN TREES - HIGHEST ESTIMATED TREE ASSET VALUE

Tree ID	Common Name	Genus	Species	DBH	Tree Asset Value
98	Oak-Pin	<i>Quercus</i>	<i>palustris</i>	39	\$36,857.00
97	Oak-Pin	<i>Quercus</i>	<i>palustris</i>	45	\$19,322.00
92	Honeylocust-Thornless Common	<i>Gleditsia</i>	<i>triacanthos</i> var. <i>inermis</i>	29	\$18,115.00
76	Honeylocust-Thornless Common	<i>Gleditsia</i>	<i>triacanthos</i> var. <i>inermis</i>	30	\$13,847.00
14	Honeylocust-Thornless Common	<i>Gleditsia</i>	<i>triacanthos</i> var. <i>inermis</i>	25	\$9,616.00
75	Honeylocust-Thornless Common	<i>Gleditsia</i>	<i>triacanthos</i> var. <i>inermis</i>	23	\$8,139.00
22	Honeylocust-Thornless Common	<i>Gleditsia</i>	<i>triacanthos</i> var. <i>inermis</i>	19	\$7,776.00
18	Honeylocust-Thornless Common	<i>Gleditsia</i>	<i>triacanthos</i> var. <i>inermis</i>	22	\$7,446.00
95	Maple-Crimson King	<i>Acer</i>	<i>platanoides</i> var. 'Crimson King'	21	\$6,785.23
20	Honeylocust-Thornless Common	<i>Gleditsia</i>	<i>triacanthos</i> var. <i>inermis</i>	21	\$6,785.00

TOP TEN TREES - HIGHEST TREE ASSET VALUE



DEFECTS OR OBSERVATIONS



DEFECTS OR OBSERVATIONS

The following table lists inventoried trees for which we noted defects, observations, or other structural issues and were not assigned an *overall tree risk rating*, recommended for a *Level 3 Advanced assessment*, or have pruning and/or removal recommendations that were previously reported.



Thornless honey locust #30, showing girdling roots, damaged roots, and sidewalk damage.



Thornless honey locust # 2, showing girdling roots, damaged roots, and sidewalk damage.



Thornless honey locust #81, showing damaged roots, sidewalk damage and fungal growth (arrow).

**INVENTORIED TREES WITH DEFECTS, OBSERVATIONS, OR OTHER STRUCTURAL ISSUES
(98 Trees)**

Tree ID	Common Name	DBH	Defect(s) or Observation(s)
1	Honeylocust-Thornless Common	17	<ul style="list-style-type: none"> • Cavity-root flare • Dead branches >2 • Girdling roots present • Pavement/curbing damage • Sidewalk lifting-minor • Uneven crown
2	Honeylocust-Thornless Common	17	<ul style="list-style-type: none"> • Dead branches <=2 • Girdling roots present • Low vigor • Pavement/curbing damage • Sidewalk lifting-major • Wound-root
3	Honeylocust-Thornless Common	15	<ul style="list-style-type: none"> • Dead branches <=2 • Hanger • Pavement/curbing damage • Sidewalk lifting-major • Uneven crown • Wound-root
4	Honeylocust-Thornless Common	15	<ul style="list-style-type: none"> • Dead branches <=2 • Low vigor • Pavement/curbing damage • Sidewalk lifting-major • Wound-root • Wound-root flare
5	Honeylocust-Thornless Common	14	<ul style="list-style-type: none"> • Co-dominant stems • Dead branches <=2 • Girdling roots present • Hanger • Lean • Poor branch structure
6	Honeylocust-Thornless Common	15	<ul style="list-style-type: none"> • Dead branches <=2 • Dead branches >2 • Lean • Pavement/curbing damage • Sidewalk lifting-major • Uneven crown

Tree ID	Common Name	DBH	Defect(s) or Observation(s)
7	Honeylocust-Thornless Common	7	<ul style="list-style-type: none"> • Dead branches <=2 • Girdling roots suspected • Low vigor • Pavement/curbing damage • Poor branch structure • Sidewalk lifting-major
8	Honeylocust-Thornless Common	9	<ul style="list-style-type: none"> • Butt swell • Co-dominant stems • Low vigor • Pavement/curbing damage • Poor branch structure • Sidewalk lifting-minor
9	Honeylocust-Thornless Common	9	<ul style="list-style-type: none"> • Dead branches <=2 • Flush cuts • Girdling roots present • Low vigor • Poor branch structure
10	Honeylocust-Thornless Common	18	<ul style="list-style-type: none"> • Dead branches >2 • Girdling roots present • Low vigor • Sidewalk lifting-minor • Wound-branch • Wound-stem
11	Honeylocust-Thornless Common	19	<ul style="list-style-type: none"> • Co-dominant stems • Dead branches <=2 • Fungi/conks • Pavement/curbing damage • Sidewalk lifting-major • Wound-root
12	Honeylocust-Thornless Common	19	<ul style="list-style-type: none"> • Butt swell • Dead branches <=2 • Girdling roots suspected • Pavement/curbing damage • Sidewalk lifting-major • Wound-root
13	Honeylocust-Thornless Common	18	<ul style="list-style-type: none"> • Butt swell • Dead branches <=2 • Pavement/curbing damage • Sidewalk lifting-major • Wound-root

Tree ID	Common Name	DBH	Defect(s) or Observation(s)
14	Honeylocust-Thornless Common	25	<ul style="list-style-type: none"> • Butt swell • Dead branches >2 • Hanger • Pavement/curbing damage • Sidewalk lifting-major • Wound-root
15	Honeylocust-Thornless Common	19	<ul style="list-style-type: none"> • Pavement/curbing damage • Poor branch structure • Sidewalk lifting-major • Wound-root • Wound-root flare • Wound-stem
16	Honeylocust-Thornless Common	20	<ul style="list-style-type: none"> • Butt swell • Fungi/conks • Girdling roots present • Pavement/curbing damage • Sidewalk lifting-major • Wound-root
17	Honeylocust-Thornless Common	17	<ul style="list-style-type: none"> • Dead branches >2 • Pavement/curbing damage • Poor branch structure • Sidewalk lifting-major • Wound-stem
18	Honeylocust-Thornless Common	22	<ul style="list-style-type: none"> • Broken branch(s) • Girdling roots suspected • Pavement/curbing damage • Sidewalk lifting-major • Wound-root flare • Wound-stem
19	Honeylocust-Thornless Common	16	<ul style="list-style-type: none"> • Dead branches <=2 • Dead branches >2 • Girdling roots suspected • Sidewalk lifting-major • Wound-root
20	Honeylocust-Thornless Common	21	<ul style="list-style-type: none"> • Butt swell • Dead branches <=2 • Poor branch structure • Sidewalk lifting-minor • Uneven crown
21	Honeylocust-Thornless Common	19	<ul style="list-style-type: none"> • Dead branches <=2 • Fungi/conks • Pavement/curbing damage • Sidewalk lifting-major • Wound-root

Tree ID	Common Name	DBH	Defect(s) or Observation(s)
22	Honeylocust-Thornless Common	19	<ul style="list-style-type: none"> • Dead branches <=2 • Sidewalk lifting-minor
23	Honeylocust-Thornless Common	14	<ul style="list-style-type: none"> • Buried root collar • Dead branches <=2 • Girdling roots suspected • Sidewalk lifting-minor • Wound-root
24	Honeylocust-Thornless Common	12	<ul style="list-style-type: none"> • Dead branches <=2 • Girdling roots suspected • Sidewalk lifting-major • Wound-root flare • Wound-stem
25	Honeylocust-Thornless Common	16	<ul style="list-style-type: none"> • Dead branches <=2 • Girdling roots present • Poor branch structure • Sidewalk lifting-major • Wound-root
26	Honeylocust-Thornless Common	17	<ul style="list-style-type: none"> • Dead branches <=2 • Pavement/curbing damage • Sidewalk lifting-major
27	Honeylocust-Thornless Common	14	<ul style="list-style-type: none"> • Broken branch(s) • Dead branches <=2 • Girdling roots present • Pavement/curbing damage • Wound-root • Wound-stem
28	Honeylocust-Thornless Common	12	<ul style="list-style-type: none"> • Dead branches <=2 • Girdling roots suspected • Poor branch structure • Sidewalk lifting-minor
29	Honeylocust-Thornless Common	15	<ul style="list-style-type: none"> • Dead branches <=2 • Girdling roots suspected • Sidewalk lifting-minor • Wound-stem
30	Honeylocust-Thornless Common	17	<ul style="list-style-type: none"> • Dead branches >2 • Girdling roots present • Seam • Sidewalk lifting-major • Wound-root
31	Honeylocust-Thornless Common	15	<ul style="list-style-type: none"> • Buried root collar • Dead branches <=2 • Girdling roots suspected • Hanger • Poor branch structure • Sidewalk lifting-minor

Tree ID	Common Name	DBH	Defect(s) or Observation(s)
32	Honeylocust-Thornless Common	20	<ul style="list-style-type: none"> • Butt swell • Dead branches >2 • Girdling roots present • Sidewalk lifting-major • Wound-root • Wound-root flare
33	Honeylocust-Thornless Common	18	<ul style="list-style-type: none"> • Dead branches >2 • Girdling roots suspected • Low vigor • Sidewalk lifting-major • Wound-root
34	Honeylocust-Thornless Common	21	<ul style="list-style-type: none"> • Dead branches <=2 • Girdling roots present • Pavement/curbing damage • Sidewalk lifting-major • Wound-root • Wound-stem
35	Honeylocust-Thornless Common	21	<ul style="list-style-type: none"> • Dead branches <=2 • Girdling roots present • Pavement/curbing damage • Poor branch structure • Sidewalk lifting-major • Wound-root
36	Honeylocust-Thornless Common	19	<ul style="list-style-type: none"> • Dead branches <=2 • Dead branches >2 • Sidewalk lifting-major • Wound-root • Wound-root flare
37	Honeylocust-Thornless Common	10	<ul style="list-style-type: none"> • Dead branches <=2 • Sidewalk lifting-minor
38	Honeylocust-Thornless Common	16	<ul style="list-style-type: none"> • Dead branches <=2 • Dead branches >2 • Pavement/curbing damage • Poor branch structure • Sidewalk lifting-major • Wound-root
39	Honeylocust-Thornless Common	21	<ul style="list-style-type: none"> • Dead branches <=2 • Dead branches >2 • Low vigor • Pavement/curbing damage • Sidewalk lifting-major • Wound-root flare

Tree ID	Common Name	DBH	Defect(s) or Observation(s)
40	Honeylocust-Thornless Common	16	<ul style="list-style-type: none"> • Broken branch(s) • Dead branches <=2 • Pavement/curbing damage • Sidewalk lifting-major • Uneven crown • Wound-stem
41	Honeylocust-Thornless Common	16	<ul style="list-style-type: none"> • Butt swell • Dead branches <=2 • Poor branch structure • Sidewalk lifting-major • Uneven crown • Wound-root
42	Honeylocust-Thornless Common	16	<ul style="list-style-type: none"> • Dead branches <=2 • Poor branch structure • Sidewalk lifting-minor • Uneven crown • Wound-root
43	Honeylocust-Thornless Common	13	<ul style="list-style-type: none"> • Dead branches <=2 • Girdling material • Poor branch structure • Sidewalk lifting-major
44	Honeylocust-Thornless Common	12	<ul style="list-style-type: none"> • Broken branch(s) • Dead branches >2 • Girdling roots suspected • Poor branch structure • Wound-stem
45	Honeylocust-Thornless Common	11	<ul style="list-style-type: none"> • Dead branches >2 • Low vigor • Poor branch structure • Wound-root
46	Honeylocust-Thornless Common	12	<ul style="list-style-type: none"> • Dead branches >2 • Girdling roots suspected • Low vigor • Poor branch structure • Wound-root flare • Wound-stem
47	Pear-Callery	6	<ul style="list-style-type: none"> • Buried root collar • Included bark • Poor branch structure • Wound-stem
48	Elm-Chinese	9	<ul style="list-style-type: none"> • Buried root collar • Co-dominant stems • Poor branch structure • Wound-root

Tree ID	Common Name	DBH	Defect(s) or Observation(s)
49	Pear-Callery	10	<ul style="list-style-type: none"> • Buried root collar • Co-dominant stems • Included bark • Poor branch structure
50	Pear-Callery	8	<ul style="list-style-type: none"> • Buried root collar • Co-dominant stems • Included bark • Poor branch structure
51	Honeylocust-Thornless Common	4	<ul style="list-style-type: none"> • Dead branches <=2 • Included bark • Poor branch structure
52	Honeylocust-Thornless Common	20	<ul style="list-style-type: none"> • Dead branches <=2 • Dead branches >2 • Girdling roots present • Poor branch structure • Sidewalk lifting-minor • Wound-root
53	Honeylocust-Thornless Common	16	<ul style="list-style-type: none"> • Butt swell • Dead branches <=2 • Poor branch structure • Sidewalk lifting-major • Wound-root • Wound-root flare
54	Honeylocust-Thornless Common	18	<ul style="list-style-type: none"> • Dead branches <=2 • Fungi/conks • Girdling roots present • Low vigor • Sidewalk lifting-major • Wound-root flare
55	Honeylocust-Thornless Common	19	<ul style="list-style-type: none"> • Butt swell • Dead branches <=2 • Pavement/curbing damage • Poor branch structure • Sidewalk lifting-major • Wound-root
56	Honeylocust-Thornless Common	15	<ul style="list-style-type: none"> • Butt swell • Dead branches <=2 • Pavement/curbing damage • Sidewalk lifting-major • Wound-root • Wound-root flare

Tree ID	Common Name	DBH	Defect(s) or Observation(s)
57	Honeylocust-Thornless Common	19	<ul style="list-style-type: none"> • Dead branches <=2 • Girdling roots suspected • Pavement/curbing damage • Sidewalk lifting-major • Wound-root
58	Honeylocust-Thornless Common	17	<ul style="list-style-type: none"> • Dead branches >2 • Girdling roots present • Pavement/curbing damage • Sidewalk lifting-major • Wound-root
59	Honeylocust-Thornless Common	16	<ul style="list-style-type: none"> • Butt swell • Dead branches <=2 • Girdling roots present • Pavement/curbing damage • Sidewalk lifting-major
60	Honeylocust-Thornless Common	17	<ul style="list-style-type: none"> • Dead branches <=2 • Girdling roots present • Hanger • Sidewalk lifting-major • Wound-root
61	Honeylocust-Thornless Common	15	<ul style="list-style-type: none"> • Dead branches <=2 • Girdling roots present • Poor branch structure • Sidewalk lifting-major • Topping/heading cuts • Wound-root
62	Honeylocust-Thornless Common	16	<ul style="list-style-type: none"> • Dead branches <=2 • Girdling material • Girdling roots present • Pavement/curbing damage • Sidewalk lifting-major • Wound-root
63	Honeylocust-Thornless Common	21	<ul style="list-style-type: none"> • Dead branches <=2 • Girdling material • Hanger • Pavement/curbing damage • Sidewalk lifting-major • Wound-root flare
64	Honeylocust-Thornless Common	16	<ul style="list-style-type: none"> • Buried root collar • Dead branches <=2 • Dead branches >2 • Girdling material • Girdling roots suspected • Sidewalk lifting-minor

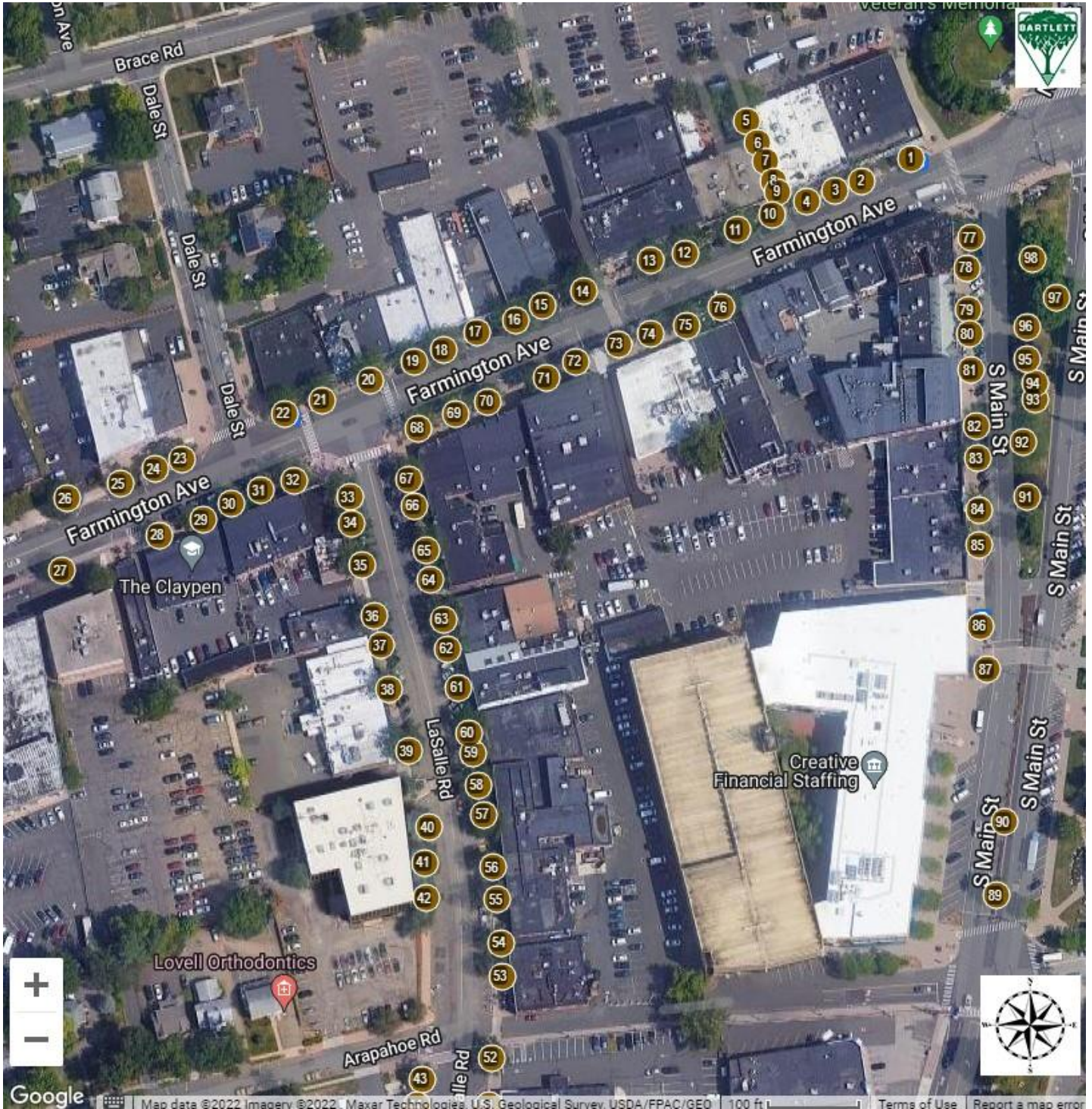
Tree ID	Common Name	DBH	Defect(s) or Observation(s)
65	Honeylocust-Thornless Common	19	<ul style="list-style-type: none"> • Dead branches <=2 • Dead branches >2 • Girdling material • Girdling roots present • Sidewalk lifting-major • Wound-root
66	Honeylocust-Thornless Common	13	<ul style="list-style-type: none"> • Co-dominant stems • Dead branches <=2 • Poor branch structure • Sidewalk lifting-minor • Wound-root
67	Honeylocust-Thornless Common	18	<ul style="list-style-type: none"> • Co-dominant stems • Dead branches >2 • Girdling roots suspected • Poor branch structure • Sidewalk lifting-major • Wound-stem
68	Honeylocust-Thornless Common	20	<ul style="list-style-type: none"> • Dead branches <=2 • Fungi/conks • Poor branch structure • Sidewalk lifting-major • Uneven crown • Wound-root
69	Honeylocust-Thornless Common	20	<ul style="list-style-type: none"> • Dead branches <=2 • Girdling material • Girdling roots suspected • Hanger • Sidewalk lifting-minor • Uneven crown
70	Honeylocust-Thornless Common	17	<ul style="list-style-type: none"> • Butt swell • Dead branches <=2 • Girdling material • Sidewalk lifting-major • Uneven crown • Wound-root flare
71	Honeylocust-Thornless Common	16	<ul style="list-style-type: none"> • Dead branches <=2 • Sidewalk lifting-major • Wound-root flare • Wound-stem
72	Honeylocust-Thornless Common	14	<ul style="list-style-type: none"> • Butt swell • Dead branches <=2 • Sidewalk lifting-major • Wound-root flare

Tree ID	Common Name	DBH	Defect(s) or Observation(s)
73	Honeylocust-Thornless Common	20	<ul style="list-style-type: none"> • Dead branches <=2 • Girdling roots suspected • Hanger • Wound-root flare
74	Honeylocust-Thornless Common	21	<ul style="list-style-type: none"> • Butt swell • Dead branches <=2 • Girdling roots suspected • Poor branch structure • Uneven crown • Wound-root flare
75	Honeylocust-Thornless Common	23	<ul style="list-style-type: none"> • Buried root collar • Co-dominant stems • Dead branches <=2 • Poor branch structure
76	Honeylocust-Thornless Common	30	<ul style="list-style-type: none"> • Dead branches <=2 • Girdling roots suspected • Sidewalk lifting-major • Wound-root
77	Honeylocust-Thornless Common	17	<ul style="list-style-type: none"> • Dead branches <=2 • Girdling roots suspected • Poor branch structure • Sidewalk lifting-major • Wound-root • Wound-stem
78	Honeylocust-Thornless Common	14	<ul style="list-style-type: none"> • Dead branches <=2 • Girdling roots present • Sidewalk lifting-major • Uneven crown • Wound-root
79	Honeylocust-Thornless Common	18	<ul style="list-style-type: none"> • Co-dominant stems • Dead branches <=2 • Fungi/conks • Girdling roots present • Sidewalk lifting-major • Wound-root
80	Honeylocust-Thornless Common	14	<ul style="list-style-type: none"> • Dead branches <=2 • Girdling roots present • Sidewalk lifting-minor • Wound-root
81	Honeylocust-Thornless Common	17	<ul style="list-style-type: none"> • Dead branches <=2 • Fungi/conks • Low vigor • Poor branch structure • Sidewalk lifting-major • Wound-root

Tree ID	Common Name	DBH	Defect(s) or Observation(s)
82	Honeylocust-Thornless Common	19	<ul style="list-style-type: none"> • Butt swell • Dead branches <=2 • Fungi/conks • Low vigor • Sidewalk lifting-major • Wound-root
83	Honeylocust-Thornless Common	17	<ul style="list-style-type: none"> • Dead branches <=2 • Girdling roots suspected • Low vigor • Sidewalk lifting-major
84	Honeylocust-Thornless Common	19	<ul style="list-style-type: none"> • Butt swell • Dead branches <=2 • Girdling roots suspected • Low vigor • Sidewalk lifting-minor
85	Honeylocust-Thornless Common	23	<ul style="list-style-type: none"> • Butt swell • Dead branches <=2 • Girdling roots present • Hanger • Sidewalk lifting-major • Wound-root
86	Oak-Pin	11	<ul style="list-style-type: none"> • Buried root collar • Dead branches <=2 • Hanger • Poor branch structure
87	Honeylocust-Thornless Common	9	<ul style="list-style-type: none"> • Broken branch(s) • Buried root collar • Co-dominant stems • Growing against object • Hanger • Poor branch structure
88	Maple-Silver	30	<ul style="list-style-type: none"> • Broken branch(s) • Dieback (moderate) • Girdling roots present (severe) • Seam • Wound-root flare • Wound-stem
89	Elm-Chinese	14	<ul style="list-style-type: none"> • Co-dominant stems • Girdling roots present • Included bark • Pavement/curbing damage • Poor branch structure • Wound-stem

Tree ID	Common Name	DBH	Defect(s) or Observation(s)
90	Elm-Chinese	9	<ul style="list-style-type: none"> • Co-dominant stems • Girdling roots present • Included bark • Poor branch structure
91	Maple-Crimson King	20	<ul style="list-style-type: none"> • Co-dominant stems • Dead branches >2 • Girdling roots suspected • Included bark • Poor branch structure • Wound-root flare
92	Honeylocust-Thornless Common	29	<ul style="list-style-type: none"> • Co-dominant stems • Dead branches >2 • Hanger • Wound-root flare
93	Crabapple	16	<ul style="list-style-type: none"> • Cavity-root flare • Cavity-stem • Co-dominant stems • Dead branches >2 • Included bark • Poor branch structure
94	Crabapple	12	<ul style="list-style-type: none"> • Cavity-root flare • Cavity-stem • Co-dominant stems • Dead branches >2 • Flush cuts • Fungi/conks
95	Maple-Crimson King	21	<ul style="list-style-type: none"> • Co-dominant stems • Girdling roots suspected • Poor branch structure • Wound-root flare
96	Elm-American	5	<ul style="list-style-type: none"> • Buried root collar • Co-dominant stems • Dead branches <=2 • Included bark • Poor branch structure
97	Oak-Pin	45	<ul style="list-style-type: none"> • Cavity-suspected • Dead branches >2 • Fungi/conks • Overextended branch • Poor branch structure • Wound-root
98	Oak-Pin	39	<ul style="list-style-type: none"> • Dead branches >2 • Poor branch structure • Wound-root flare

INVENTORIED TREES WITH DEFECTS, OBSERVATIONS, OR OTHER STRUCTURAL ISSUES NORTH



**INVENTORIED TREES WITH DEFECTS, OBSERVATIONS, OR OTHER STRUCTURAL ISSUES
SOUTH**



ENTIRE INVENTORY



ENTIRE INVENTORY (98 Trees)

Tree ID	Common Name	Genus	Species	DBH	Height Class	Age Class	Stems	Condition Class	Tree Asset Value
1	Honeylocust-Thornless Common	<i>Gleditsia</i>	<i>triacanthos</i> var. <i>inermis</i>	17	Medium	Over-mature	1	Poor	\$2,667.00
2	Honeylocust-Thornless Common	<i>Gleditsia</i>	<i>triacanthos</i> var. <i>inermis</i>	17	Medium	Over-mature	1	Fair	\$4,446.00
3	Honeylocust-Thornless Common	<i>Gleditsia</i>	<i>triacanthos</i> var. <i>inermis</i>	15	Medium	Over-mature	1	Poor	\$2,077.00
4	Honeylocust-Thornless Common	<i>Gleditsia</i>	<i>triacanthos</i> var. <i>inermis</i>	15	Medium	Over-mature	1	Fair	\$3,461.00
5	Honeylocust-Thornless Common	<i>Gleditsia</i>	<i>triacanthos</i> var. <i>inermis</i>	14	Medium	Over-mature	1	Fair	\$3,015.00
6	Honeylocust-Thornless Common	<i>Gleditsia</i>	<i>triacanthos</i> var. <i>inermis</i>	15	Medium	Over-mature	1	Fair	\$3,461.00
7	Honeylocust-Thornless Common	<i>Gleditsia</i>	<i>triacanthos</i> var. <i>inermis</i>	7	Medium	Semi-mature	1	Poor	\$452.00
8	Honeylocust-Thornless Common	<i>Gleditsia</i>	<i>triacanthos</i> var. <i>inermis</i>	9	Medium	Semi-mature	1	Fair	\$1,246.00
9	Honeylocust-Thornless Common	<i>Gleditsia</i>	<i>triacanthos</i> var. <i>inermis</i>	9	Medium	Semi-mature	1	Fair	\$1,246.00
10	Honeylocust-Thornless Common	<i>Gleditsia</i>	<i>triacanthos</i> var. <i>inermis</i>	18	Medium	Mature	1	Fair	\$4,985.00
11	Honeylocust-Thornless Common	<i>Gleditsia</i>	<i>triacanthos</i> var. <i>inermis</i>	19	Medium	Over-mature	1	Fair	\$5,554.00
12	Honeylocust-Thornless Common	<i>Gleditsia</i>	<i>triacanthos</i> var. <i>inermis</i>	19	Medium	Over-mature	1	Fair	\$5,554.00
13	Honeylocust-Thornless Common	<i>Gleditsia</i>	<i>triacanthos</i> var. <i>inermis</i>	18	Medium	Over-mature	1	Fair	\$4,985.00
14	Honeylocust-Thornless Common	<i>Gleditsia</i>	<i>triacanthos</i> var. <i>inermis</i>	25	Medium	Over-mature	1	Fair	\$9,616.00

Tree ID	Common Name	Genus	Species	DBH	Height Class	Age Class	Stems	Condition Class	Tree Asset Value
15	Honeylocust-Thornless Common	<i>Gleditsia</i>	<i>triacanthos</i> var. <i>inermis</i>	19	Medium	Over-mature	1	Poor	\$3,332.00
16	Honeylocust-Thornless Common	<i>Gleditsia</i>	<i>triacanthos</i> var. <i>inermis</i>	20	Medium	Over-mature	1	Fair	\$6,154.00
17	Honeylocust-Thornless Common	<i>Gleditsia</i>	<i>triacanthos</i> var. <i>inermis</i>	17	Medium	Over-mature	1	Fair	\$4,446.00
18	Honeylocust-Thornless Common	<i>Gleditsia</i>	<i>triacanthos</i> var. <i>inermis</i>	22	Medium	Over-mature	1	Fair	\$7,446.00
19	Honeylocust-Thornless Common	<i>Gleditsia</i>	<i>triacanthos</i> var. <i>inermis</i>	16	Medium	Over-mature	1	Fair	\$3,938.00
20	Honeylocust-Thornless Common	<i>Gleditsia</i>	<i>triacanthos</i> var. <i>inermis</i>	21	Medium	Over-mature	1	Fair	\$6,785.00
21	Honeylocust-Thornless Common	<i>Gleditsia</i>	<i>triacanthos</i> var. <i>inermis</i>	19	Medium	Over-mature	1	Fair	\$5,554.00
22	Honeylocust-Thornless Common	<i>Gleditsia</i>	<i>triacanthos</i> var. <i>inermis</i>	19	Medium	Mature	1	Good	\$7,776.00
23	Honeylocust-Thornless Common	<i>Gleditsia</i>	<i>triacanthos</i> var. <i>inermis</i>	14	Medium	Mature	1	Good	\$4,221.00
24	Honeylocust-Thornless Common	<i>Gleditsia</i>	<i>triacanthos</i> var. <i>inermis</i>	12	Medium	Mature	1	Fair	\$2,215.00
25	Honeylocust-Thornless Common	<i>Gleditsia</i>	<i>triacanthos</i> var. <i>inermis</i>	16	Medium	Mature	1	Fair	\$3,938.00
26	Honeylocust-Thornless Common	<i>Gleditsia</i>	<i>triacanthos</i> var. <i>inermis</i>	17	Medium	Over-mature	1	Fair	\$4,446.00
27	Honeylocust-Thornless Common	<i>Gleditsia</i>	<i>triacanthos</i> var. <i>inermis</i>	14	Medium	Over-mature	1	Fair	\$3,015.00
28	Honeylocust-Thornless Common	<i>Gleditsia</i>	<i>triacanthos</i> var. <i>inermis</i>	12	Medium	Mature	1	Fair	\$2,215.00
29	Honeylocust-Thornless Common	<i>Gleditsia</i>	<i>triacanthos</i> var. <i>inermis</i>	15	Medium	Mature	1	Fair	\$3,461.00
30	Honeylocust-Thornless Common	<i>Gleditsia</i>	<i>triacanthos</i> var. <i>inermis</i>	17	Medium	Over-mature	1	Fair	\$4,446.00

Tree ID	Common Name	Genus	Species	DBH	Height Class	Age Class	Stems	Condition Class	Tree Asset Value
31	Honeylocust-Thornless Common	<i>Gleditsia</i>	<i>triacanthos</i> var. <i>inermis</i>	15	Medium	Mature	1	Fair	\$3,461.00
32	Honeylocust-Thornless Common	<i>Gleditsia</i>	<i>triacanthos</i> var. <i>inermis</i>	20	Medium	Over-mature	1	Poor	\$3,692.64
33	Honeylocust-Thornless Common	<i>Gleditsia</i>	<i>triacanthos</i> var. <i>inermis</i>	18	Medium	Over-mature	1	Poor	\$2,991.00
34	Honeylocust-Thornless Common	<i>Gleditsia</i>	<i>triacanthos</i> var. <i>inermis</i>	21	Medium	Over-mature	1	Fair	\$6,785.00
35	Honeylocust-Thornless Common	<i>Gleditsia</i>	<i>triacanthos</i> var. <i>inermis</i>	21	Medium	Over-mature	1	Fair	\$6,785.00
36	Honeylocust-Thornless Common	<i>Gleditsia</i>	<i>triacanthos</i> var. <i>inermis</i>	19	Medium	Over-mature	1	Fair	\$5,554.00
37	Honeylocust-Thornless Common	<i>Gleditsia</i>	<i>triacanthos</i> var. <i>inermis</i>	10	Medium	Mature	1	Good	\$2,154.00
38	Honeylocust-Thornless Common	<i>Gleditsia</i>	<i>triacanthos</i> var. <i>inermis</i>	16	Medium	Over-mature	1	Fair	\$3,938.00
39	Honeylocust-Thornless Common	<i>Gleditsia</i>	<i>triacanthos</i> var. <i>inermis</i>	21	Medium	Over-mature	1	Fair	\$6,785.00
40	Honeylocust-Thornless Common	<i>Gleditsia</i>	<i>triacanthos</i> var. <i>inermis</i>	16	Medium	Over-mature	1	Fair	\$3,938.00
41	Honeylocust-Thornless Common	<i>Gleditsia</i>	<i>triacanthos</i> var. <i>inermis</i>	16	Medium	Over-mature	1	Fair	\$3,938.00
42	Honeylocust-Thornless Common	<i>Gleditsia</i>	<i>triacanthos</i> var. <i>inermis</i>	16	Medium	Mature	1	Fair	\$3,938.00
43	Honeylocust-Thornless Common	<i>Gleditsia</i>	<i>triacanthos</i> var. <i>inermis</i>	13	Medium	Mature	1	Fair	\$2,600.00
44	Honeylocust-Thornless Common	<i>Gleditsia</i>	<i>triacanthos</i> var. <i>inermis</i>	12	Medium	Mature	1	Poor	\$1,329.35
45	Honeylocust-Thornless Common	<i>Gleditsia</i>	<i>triacanthos</i> var. <i>inermis</i>	11	Medium	Mature	1	Poor	\$1,117.02
46	Honeylocust-Thornless Common	<i>Gleditsia</i>	<i>triacanthos</i> var. <i>inermis</i>	12	Medium	Mature	1	Fair	\$2,215.00

Tree ID	Common Name	Genus	Species	DBH	Height Class	Age Class	Stems	Condition Class	Tree Asset Value
47	Pear-Callery	<i>Pyrus</i>	<i>calleryana</i>	6	Medium	Semi-mature	1	Fair	\$356.00
48	Elm-Chinese	<i>Ulmus</i>	<i>parvifolia</i>	9	Medium	Semi-mature	1	Fair	\$1,157.00
49	Pear-Callery	<i>Pyrus</i>	<i>calleryana</i>	10	Medium	Semi-mature	1	Good	\$1,384.00
50	Pear-Callery	<i>Pyrus</i>	<i>calleryana</i>	8	Medium	Semi-mature	1	Good	\$886.00
51	Honeylocust-Thornless Common	<i>Gleditsia</i>	<i>triacanthos</i> var. <i>inermis</i>	4	Small	Young	1	Good	\$344.00
52	Honeylocust-Thornless Common	<i>Gleditsia</i>	<i>triacanthos</i> var. <i>inermis</i>	20	Medium	Over-mature	1	Fair	\$6,154.00
53	Honeylocust-Thornless Common	<i>Gleditsia</i>	<i>triacanthos</i> var. <i>inermis</i>	16	Medium	Over-mature	1	Fair	\$3,938.00
54	Honeylocust-Thornless Common	<i>Gleditsia</i>	<i>triacanthos</i> var. <i>inermis</i>	18	Medium	Over-mature	1	Poor	\$2,991.00
55	Honeylocust-Thornless Common	<i>Gleditsia</i>	<i>triacanthos</i> var. <i>inermis</i>	19	Medium	Over-mature	1	Fair	\$5,554.00
56	Honeylocust-Thornless Common	<i>Gleditsia</i>	<i>triacanthos</i> var. <i>inermis</i>	15	Medium	Over-mature	1	Fair	\$3,461.00
57	Honeylocust-Thornless Common	<i>Gleditsia</i>	<i>triacanthos</i> var. <i>inermis</i>	19	Medium	Over-mature	1	Fair	\$5,554.00
58	Honeylocust-Thornless Common	<i>Gleditsia</i>	<i>triacanthos</i> var. <i>inermis</i>	17	Medium	Over-mature	1	Fair	\$4,446.00
59	Honeylocust-Thornless Common	<i>Gleditsia</i>	<i>triacanthos</i> var. <i>inermis</i>	16	Medium	Over-mature	1	Fair	\$3,938.00
60	Honeylocust-Thornless Common	<i>Gleditsia</i>	<i>triacanthos</i> var. <i>inermis</i>	17	Medium	Over-mature	1	Fair	\$4,446.00
61	Honeylocust-Thornless Common	<i>Gleditsia</i>	<i>triacanthos</i> var. <i>inermis</i>	15	Medium	Over-mature	1	Poor	\$2,077.00
62	Honeylocust-Thornless Common	<i>Gleditsia</i>	<i>triacanthos</i> var. <i>inermis</i>	16	Medium	Over-mature	1	Fair	\$3,938.00

Tree ID	Common Name	Genus	Species	DBH	Height Class	Age Class	Stems	Condition Class	Tree Asset Value
63	Honeylocust-Thornless Common	<i>Gleditsia</i>	<i>triacanthos</i> var. <i>inermis</i>	21	Medium	Over-mature	1	Fair	\$6,785.00
64	Honeylocust-Thornless Common	<i>Gleditsia</i>	<i>triacanthos</i> var. <i>inermis</i>	16	Medium	Mature	1	Poor	\$2,363.29
65	Honeylocust-Thornless Common	<i>Gleditsia</i>	<i>triacanthos</i> var. <i>inermis</i>	19	Medium	Over-mature	1	Poor	\$3,332.61
66	Honeylocust-Thornless Common	<i>Gleditsia</i>	<i>triacanthos</i> var. <i>inermis</i>	13	Medium	Mature	1	Fair	\$2,600.00
67	Honeylocust-Thornless Common	<i>Gleditsia</i>	<i>triacanthos</i> var. <i>inermis</i>	18	Medium	Over-mature	1	Fair	\$4,985.00
68	Honeylocust-Thornless Common	<i>Gleditsia</i>	<i>triacanthos</i> var. <i>inermis</i>	20	Medium	Over-mature	1	Fair	\$6,154.00
69	Honeylocust-Thornless Common	<i>Gleditsia</i>	<i>triacanthos</i> var. <i>inermis</i>	20	Medium	Mature	1	Fair	\$6,154.00
70	Honeylocust-Thornless Common	<i>Gleditsia</i>	<i>triacanthos</i> var. <i>inermis</i>	17	Medium	Over-mature	1	Fair	\$4,446.00
71	Honeylocust-Thornless Common	<i>Gleditsia</i>	<i>triacanthos</i> var. <i>inermis</i>	16	Medium	Over-mature	1	Poor	\$2,363.29
72	Honeylocust-Thornless Common	<i>Gleditsia</i>	<i>triacanthos</i> var. <i>inermis</i>	14	Medium	Over-mature	1	Fair	\$3,015.00
73	Honeylocust-Thornless Common	<i>Gleditsia</i>	<i>triacanthos</i> var. <i>inermis</i>	20	Medium	Mature	1	Fair	\$6,154.00
74	Honeylocust-Thornless Common	<i>Gleditsia</i>	<i>triacanthos</i> var. <i>inermis</i>	21	Medium	Mature	1	Fair	\$6,785.00
75	Honeylocust-Thornless Common	<i>Gleditsia</i>	<i>triacanthos</i> var. <i>inermis</i>	23	Medium	Mature	1	Fair	\$8,139.00
76	Honeylocust-Thornless Common	<i>Gleditsia</i>	<i>triacanthos</i> var. <i>inermis</i>	30	Large	Over-mature	1	Fair	\$13,847.00
77	Honeylocust-Thornless Common	<i>Gleditsia</i>	<i>triacanthos</i> var. <i>inermis</i>	17	Medium	Over-mature	1	Fair	\$4,446.00
78	Honeylocust-Thornless Common	<i>Gleditsia</i>	<i>triacanthos</i> var. <i>inermis</i>	14	Medium	Over-mature	1	Fair	\$3,015.00

Tree ID	Common Name	Genus	Species	DBH	Height Class	Age Class	Stems	Condition Class	Tree Asset Value
79	Honeylocust-Thornless Common	<i>Gleditsia</i>	<i>triacanthos</i> var. <i>inermis</i>	18	Medium	Over-mature	1	Poor	\$2,991.00
80	Honeylocust-Thornless Common	<i>Gleditsia</i>	<i>triacanthos</i> var. <i>inermis</i>	14	Medium	Mature	1	Fair	\$3,015.00
81	Honeylocust-Thornless Common	<i>Gleditsia</i>	<i>triacanthos</i> var. <i>inermis</i>	17	Medium	Over-mature	1	Poor	\$2,667.00
82	Honeylocust-Thornless Common	<i>Gleditsia</i>	<i>triacanthos</i> var. <i>inermis</i>	19	Medium	Over-mature	1	Poor	\$3,332.61
83	Honeylocust-Thornless Common	<i>Gleditsia</i>	<i>triacanthos</i> var. <i>inermis</i>	17	Medium	Mature	1	Poor	\$2,667.93
84	Honeylocust-Thornless Common	<i>Gleditsia</i>	<i>triacanthos</i> var. <i>inermis</i>	19	Medium	Mature	1	Poor	\$3,332.61
85	Honeylocust-Thornless Common	<i>Gleditsia</i>	<i>triacanthos</i> var. <i>inermis</i>	23	Medium	Mature	1	Poor	\$4,883.52
86	Oak-Pin	<i>Quercus</i>	<i>palustris</i>	11	Medium	Semi-mature	1	Fair	\$2,260.00
87	Honeylocust-Thornless Common	<i>Gleditsia</i>	<i>triacanthos</i> var. <i>inermis</i>	9	Medium	Semi-mature	1	Fair	\$1,246.00
88	Maple-Silver	<i>Acer</i>	<i>saccharinum</i>	30	Large	Mature	1	Poor	\$6,528.00
89	Elm-Chinese	<i>Ulmus</i>	<i>parvifolia</i>	14	Medium	Mature	1	Fair	\$2,800.00
90	Elm-Chinese	<i>Ulmus</i>	<i>parvifolia</i>	9	Medium	Semi-mature	1	Fair	\$1,157.00
91	Maple-Crimson King	<i>Acer</i>	<i>platanoides</i> var. 'Crimson King'	20	Medium	Semi-mature	1	Poor	\$3,692.64
92	Honeylocust-Thornless Common	<i>Gleditsia</i>	<i>triacanthos</i> var. <i>inermis</i>	29	Large	Mature	1	Good	\$18,115.00
93	Crabapple	<i>Malus</i>	sp.	16	Small	Over-mature	1	Poor	\$2,363.00
94	Crabapple	<i>Malus</i>	sp.	12	Small	Mature	1	Poor	\$1,329.00
95	Maple-Crimson King	<i>Acer</i>	<i>platanoides</i> var. 'Crimson King'	21	Medium	Semi-mature	1	Fair	\$6,785.23

Tree ID	Common Name	Genus	Species	DBH	Height Class	Age Class	Stems	Condition Class	Tree Asset Value
96	Elm-American	<i>Ulmus</i>	<i>americana</i>	5	Medium	Young	1	Good	\$423.00
97	Oak-Pin	<i>Quercus</i>	<i>palustris</i>	45	Large	Over-mature	1	Poor	\$19,322.00
98	Oak-Pin	<i>Quercus</i>	<i>palustris</i>	39	Large	Mature	1	Good	\$36,857.00

APPENDIX



ADDITIONAL RESOURCES

Bartlett publishes a variety of tree-resource documents, including technical reports, plant health care recommendations, and service brochures. The following technical reports may be pertinent to your inventory. To access these documents and view the complete Bartlett Resource Library online, please follow this URL:

<https://www.bartlett.com/resourcelist.cfm>

Girdling Roots

Maintenance Pruning Program

Monitor IPM Program

Mulch Application Guidelines

Tree Risk Assessments

Tree Structure Evaluation

GLOSSARY OF TERMS

air pollution removal: removal of pollutants from the air by plants through natural processes

arborist: 1. An individual engaged in the profession of arboriculture who, through experience, education and related training, possesses the competence to provide for, or supervise the management of, trees and other woody ornamentals. [ANSI A300 (Part 1, 2, 4, 5, 6)] 2. An individual engaged in the profession of arboriculture. [ANSI Z133.1-2000 Safety Requirements for Arboricultural Operations]

bracing: The installation of lag-thread screw or threaded-steel rods in limbs, leaders, or trunks to provide supplemental support. [ANSI A300 (Part 3)-2000 Support Systems]

branch: An outgrowing shoot, stem or twig that grows from the main stem or trunk. [ANSI Z60.1-2004 Nursery Stock]

buttress roots: Lateral surface roots that aid in stabilizing the tree.

cable: 1) Zinc coated strand per ASTM A-475 for dead-end grip applications. 2) Wire rope or strand for general applications. 3) Synthetic-fiber rope or synthetic-fiber webbing for general applications. [ANSI A300 (Part 3)-2000 Support Systems]

cabling: The installation of a steel wire rope, steel strand, or synthetic-fiber system within a tree between limbs or leaders to limit movement and provide supplemental support. [ANSI A300 (Part 3)-2000 Support Systems]

canopy: collective branches and foliage of a tree or group of trees' crowns

carbon sequestration: removal of carbon from the air by plants through natural processes

carbon storage: storage of carbon removed from the air in plant tissues

cation exchange capacity (CEC): The ability of soil to absorb nutrients.

cavity: An open wound characterized by the presence of decay and resulting in a hollow.

cleaning: Selective pruning to remove one or more of the following parts: dead, diseased, and/ or broken branches (5.6.1). [ANSI A300 (Part 1)-2001 Pruning]

co-dominant branches: Equal in size and importance, usually associated with either the trunks, stems, or scaffold limbs.

conk: fruiting body or non-fruiting body of a fungus. Often associated with decay.

critical root zone (CRZ): area of soil around a tree trunk where roots are located that provide stability and uptake of water and minerals required for tree survival.

crown: 1. The leaves and branches of a tree measured from the lowest branch on the trunk to the top of the tree. [ANSI A300 (Part 1)-2001 Pruning] [ANSI A300 (Part 6)-2005 Transplanting] 2. The portion of a tree comprising the branches. [ANSI Z60.1-2004 Nursery Stock]

D.B.H. [diameter at breast height]: Measurement of trunk diameter taken at 4.5 feet (1.4 m) off the ground. [ANSI A300 (Part 6)-2005 Transplanting]

decay: The degradation of woody tissue caused by microorganisms. [ANSI A300 (Part 1)-2001 Pruning]

Geographic Information System (GIS): is any system for capturing, storing, analyzing and managing data and associated attributes which are spatially referenced to earth.

girdling root: A root that may impede proper development of other roots, trunk flare, and/or trunk. [ANSI A300 (Part 6)-2005 Transplanting]

Global Positioning System (GPS): A constellation of at least 24 Medium Earth Orbit satellites that transmit precise microwave signals, the system enables a GPS receiver to determine its location, speed, direction, and time.

Global Positioning System receiver (GPSr): A receiver that receives its input from GPS satellites to determine location, speed, direction, and time.

heading: cutting a shoot back to a bud or cutting branches back to buds, stubs, or lateral branches not large enough to assume apical dominance. Cutting an older branch or stem back to meet a structural objective

integrated pest management (IPM): A pest control strategy that uses an array of complementary methods: mechanical devices, physical devices, genetic, biological, legal, cultural management, and chemical management. These methods are done in three stages of prevention, Observation, and finally Intervention. It is an ecological approach that has its main goal is to significantly reduce or eliminate the use of pesticides.

lateral branch: A shoot or stem growing from a parent branch or stem. [ANSI A300 (Part 1)-2001 Pruning]

leader: A dominant or co-dominant, upright stem. [ANSI A300 (Part 1)-2001 Pruning]

lean: Departure from vertical of the stem, beginning at or near the base of the trunk.

limb: A large, prominent branch. [ANSI A300 (Part 1)-2001 Pruning]

lion's tailing: The removal of an excessive number of inner, lateral branches from parent branches. Lion's tailing is not an acceptable pruning practice (5.5.7). [ANSI A300 (Part 1)-2001 Pruning]

macronutrient: Nutrient required in relatively large amounts by plants, such as nitrogen (N), phosphorus (P), potassium (K), and sulfur (S). [ANSI A300 (Part 2)-2004 Fertilization]

micronutrient: Nutrient required in relatively small amounts by plants, such as iron (Fe), manganese (Mn), zinc (Zn), copper (Cu), and boron (B). [ANSI A300 (Part 2)-2004 Fertilization]

noise attenuation: reducing sound levels via materials, structures, plants, etc.

nutrient: Element or compound required for growth, reproduction or development of a plant. [ANSI A300 (Part 2)-2004 Fertilization]

organic matter: material derived from the growth (and death) of living organisms. The organic components of soil.

parent branch or stem: A tree trunk, limb, or prominent branch from which shoots or stems grow. [ANSI A300 (Part 1)-2001 Pruning]

pH: unit of measurement that describes the alkalinity or acidity of a solution. Measured on a scale of 0 to 14. Greater than 7 is alkaline, less than 7 is acid, and 7 is neutral (pure water).

pruning: The selective removal of plant parts to meet specific goals and objectives. [ANSI A300 (Part 1)-2001 Pruning]

qualified arborist: An individual who, by possession of a recognized degree, certification, or professional standing, or through related training and on-the-job experience, is familiar with the equipment and hazards involved in arboricultural operations and who has demonstrated ability in the performance of the special techniques involved. [ANSI Z133.1-2000 Safety Requirements for Arboricultural Operations]

raising: Selective pruning to provide vertical clearance (5.6.3). [ANSI A300 (Part 1)-2001 Pruning]

reduction: Selective pruning to decrease height and/or spread (5.6.4). [ANSI A300 (Part 1)-2001 Pruning]

risk assessment: process of evaluating what unexpected things could happen, how likely it is, and what the likely outcomes are. In tree management, the systematic process to determine the level of risk posed by a tree, tree part, or group of trees.

root collar: 1. The transition zone between the trunk and the root system. [ANSI A300

(Part 6)-2005 Transplanting] 2. See COLLAR. [ANSI Z60.1-2004 Nursery Stock]

root flare or trunk flare: The area at the base of the plant's stem or trunk where the stem or trunk broadens to form roots; the area of transition between the root system and the stem or trunk. [ANSI Z60.1-2004 Nursery Stock] [ANSI A300 (Part 6)-2005 Transplanting]

root zone: The volume of soil containing the roots of a plant. [ANSI A300 (Part 5)-2005 Management]

secondary nutrient: Nutrient required in moderate amounts by plants, such as calcium (Ca) and magnesium (Mg). [ANSI A300 (Part 2)-2004 Fertilization]

seam: Vertical line that appears where two edges of wound wood or callus ridge meet.

soil amendment: Any material added to soil to alter its composition and structure, such as sand, fertilizer, or organic matter. [ANSI A300 (Part 6)-2005 Transplanting]

soil pH: A measure of the acidity or alkalinity of the soil.

stormwater runoff: water (generally from rain or snow melt) that flows over the ground after storm events.

structural support system: hardware installed in tree, may be; cables, braces, or guys, to provide supplemental support.

sweep: Departure from vertical of the stem, beginning above the base of the trunk.

thinning: Selective pruning to reduce density of live branches (5.6.2). [ANSI A300 (Part 1)-2001 Pruning]

tree risk assessment: Closer inspection of visibly damaged, dead, defected, diseased, leaning or dying tree to determine management needs.

topping: The reduction of a tree's size using heading cuts that shorten limbs or branches back to a predetermined crown limit. Topping is not acceptable pruning practice. (5.5.7). [ANSI A300 (Part 1)-2001 Pruning]

tree inventory: A comprehensive list of individual trees providing descriptive information on all or a portion of the project area. [ANSI A300 (Part 5)-2005 Management during site planning, site development, and construction]

tree protection zone: A space above and belowground within which trees are to be retained and protected. [ANSI A300 (Part 5)-2005 Management during site planning, site development, and construction]

trunk: That portion of a stem or stems of a tree before branching occurs. [ANSI Z60.1-

2004 Nursery Stock]

vigor: Overall health. Capacity to grow and resist stress. [ISA Municipal Specialist Certification Study Guide 2008]

wound: An opening that is created when the bark of a living branch or stem is penetrated, cut, or removed. [ANSI A300 (Part 1)-2001 Pruning]