

Understanding the NWEA MAP/Growth Assessments and Parent Reports

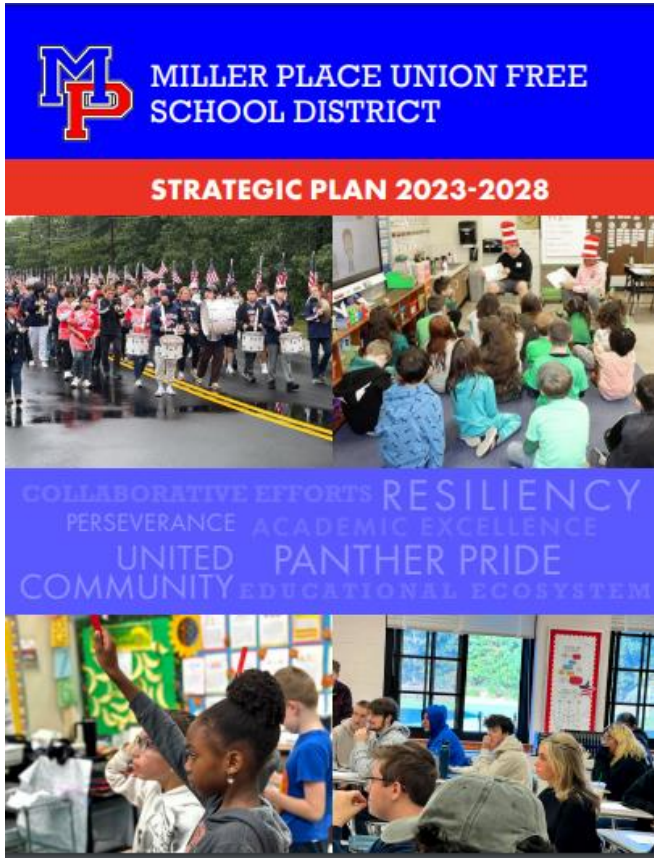
How MAP Supports Student Growth and Achievement

February 27, 2025

Empowering excellence today, developing tomorrow's achievers, forever Miller Place proud.



Miller Place UFSD Strategic Plan



Pillar II: Student Academic Performance Improvements

“The district is unwavering in its commitments to raising the bar on academic excellence. Through data-driven strategies, guidance of personalized student interests and strengths, and support of educators, we will equip our students to excel academically while becoming confident and adaptable learners.”

Empowering excellence today, developing tomorrow’s achievers, forever Miller Place proud.



Miller Place UFSD Data Sources

- The Miller Place UFSD uses multiple data points to assess student learning and plan instructional goals.
- Examples of data sources include:
 - Fountas & Pinnell running records data (fall, winter, spring benchmarking) in grades K-2
 - AIMSWeb progress monitoring for students with intervention services in grades K-5
 - NWEA MAP/Growth in grades 2-8
 - Teacher-created assessments and observational data in all grades
 - Formative and summative assessments in all grades
 - NYS ELA and Math assessments in grades 3-8
 - Algebra and Earth Science Regents (grade 8 acceleration)
 - MPHS Regents and Advanced Placement exams
 - Student behavior observations in small group, whole group and 1:1 instruction settings in all grades

Empowering excellence today, developing tomorrow's achievers, forever Miller Place proud.



What is NWEA?

- The Northwest Evaluation Association is a research-based assessment that measures growth and proficiency.
- NWEA is a nationally-normed, universal screener (brief assessment focused on key skills) that provides data about skills students have learned and what they are ready to learn next.
- NWEA is not used for course placement or acceleration.
- NWEA is not used in any aspect of student grading.
- NWEA is a computer-adaptive test (CAT).

Empowering excellence today, developing tomorrow's achievers, forever Miller Place proud.



What is a Computer Adaptive Test?

- A computer-adaptive test is a method for administering tests that adapt to a student's ability level.
- The difficulty of the test tailors itself to the student's achievement level.
- The first time a student takes a computer-adaptive test, the questions are based on the student's current achievement estimate.
- When a student responds correctly, they receive a more difficult item. Incorrect responses are followed by easier items.
- After only a few questions, the item difficulties are close to a student's true achievement level in the form of a *RIT* (**R**asch **Un**IT) score.
- Students spend less time testing, because significantly fewer items are needed to provide uniformly accurate scores.

Empowering excellence today, developing tomorrow's achievers, forever Miller Place proud.



What is Adaptive Testing?

How it works

MAP Growth is a computer-adaptive test. If your child answers a question correctly, the next question is more challenging. If they answer incorrectly, the next one is easier. This type of assessment challenges top performers without overwhelming students whose skills are below grade level.



MAP Growth begins with a question at each student's grade level and adjusts the level of difficulty based on individual performance.



Empowering excellence today, developing tomorrow's achievers, forever Miller Place proud.

What is Map Growth?

- MAP is **M**easures of **A**cademic **P**rogress
- MAP Growth uses a *RIT scale* to accurately measure what students know, regardless of grade level.
- MAP Growth measures growth over time, to track progress throughout the year and across multiple years.
- The growth score is calculated by subtracting the fall RIT score from the winter or spring RIT score.

$$\begin{array}{ccccccc} 200 & - & 185 & = & 15 \\ \text{Winter} & & \text{Fall} & & \text{Growth Score} \end{array}$$

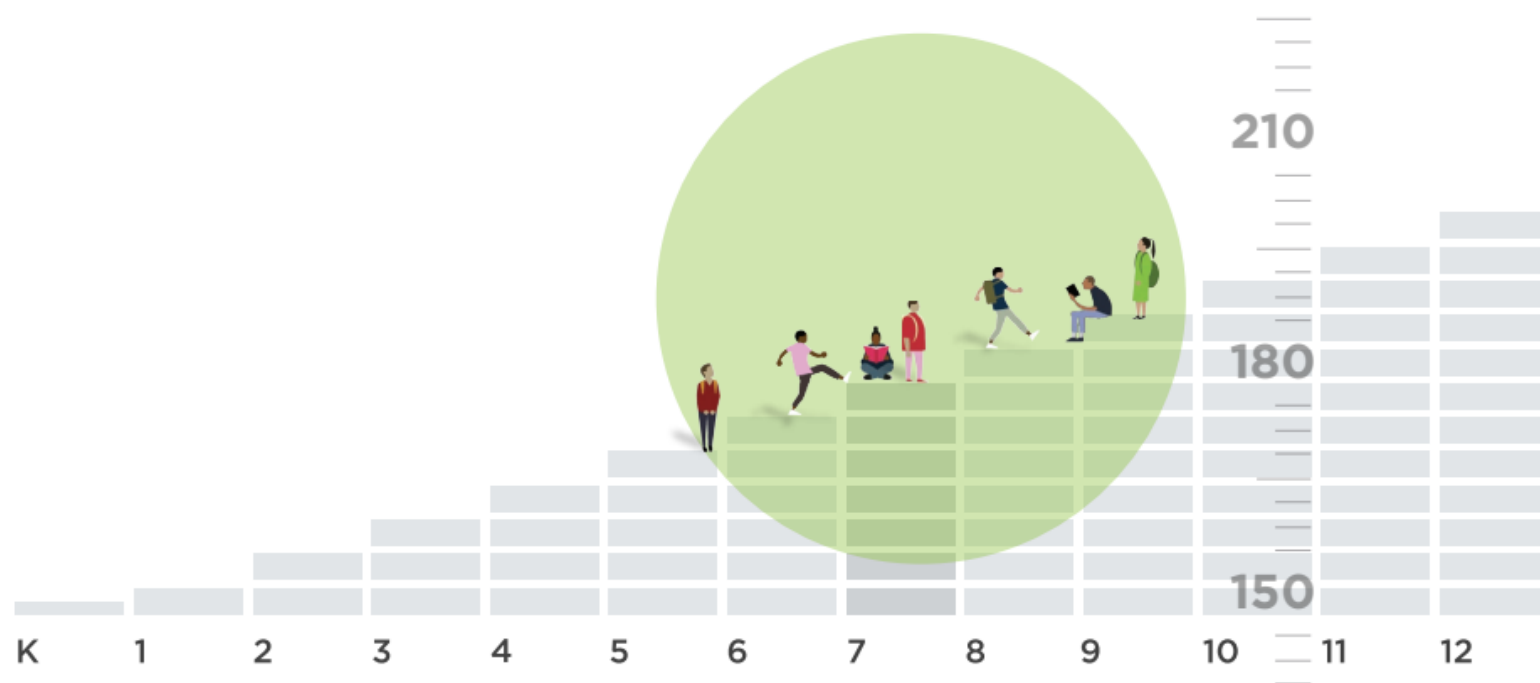
Empowering excellence today, developing tomorrow's achievers, forever Miller Place proud.



What Does Map Growth Measure?

What it measures

MAP Growth uses a RIT scale to accurately measure what students know, regardless of their grade level. It also measures growth over time, allowing you to track your child's progress throughout the school year and across multiple years. Once your child completes a MAP Growth test, they receive a RIT score.



The RIT scale precisely measures student performance, regardless of whether they're performing on, above, or below grade level.

Empowering excellence today, developing tomorrow's achievers, forever Miller Place proud.



NWEA MAP Administration Schedule

- MAP Growth is administered in ELA and Math in grades 2-8 three times per year in the fall, winter, and spring.
- Assessments are taken during ELA and Math class.
- Assessments are administered during an uninterrupted testing setting whenever possible.
- The assessment takes approximately 30-45 minutes but may vary by individual student and grade.
- Teachers provide testing strategies and guidance to students before the testing sessions and encouragement during testing.

Empowering excellence today, developing tomorrow's achievers, forever Miller Place proud.



How Does Miller Place Use NWEA?

In combination with other data points:

- Identify instructional alignment with ELA and Math standards.
- Identify student performance trends.
- Identify students who may need additional support beyond classroom instruction.
- Differentiate classroom instruction and lesson planning.
- Determine student classroom groupings.
- Develop classroom strategies that maximize student learning.
- Familiarize students with computer-based testing and assessment.
- Goal setting toward reaching growth goals.

Empowering excellence today, developing tomorrow's achievers, forever Miller Place proud.



Understanding Growth Goals

- Teacher-student conferencing
- Sharing data with students
- Planning for academic growth
- Reflection on growth goals
- Recognizing and celebrating student growth
- Practicing a *Growth Mindset*



Setting Elementary Growth Goals

Name _____

WINTER GOAL

In the fall I scored ___ points in Reading.

My goal is for my score to grow ___ points in Reading.

I grew ___ points in Reading.

Did I meet my goal? ___

Did I grow? ___



How will I reach my goal?



Setting Secondary Growth Goals

STUDENT'S NAME _____

NWEA GOAL SETTING WORKSHEET-MATH

WINTER GOAL



In the FALL I scored _____ points in Math

My goal is for my score to grow _____ points in Math

How I will reach my goal:

In the WINTER I scored _____ in Math

Number of points I grew from FALL to WINTER _____

GOAL REACHED

SPRING GOAL



In the WINTER I scored _____ points in Math

My goal is for my score to grow _____ points in Math

How I will reach my goal:

In the SPRING I scored _____ in Math

Number of points I grew from WINTER to SPRING _____

GOAL REACHED



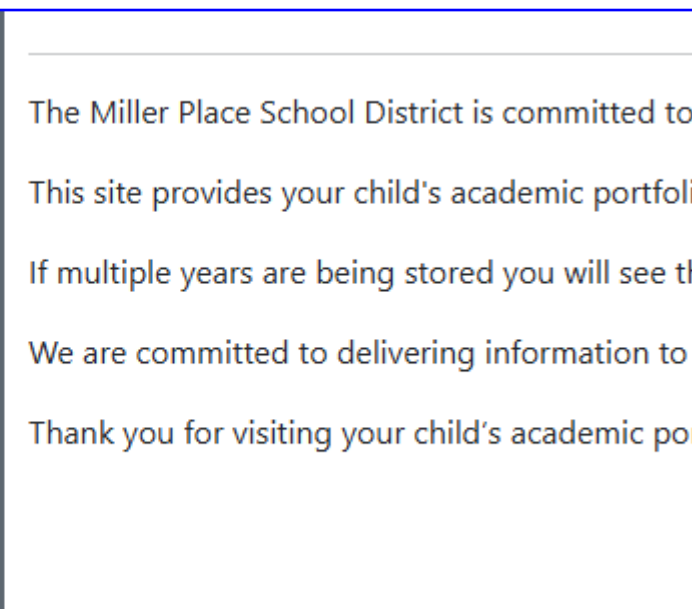
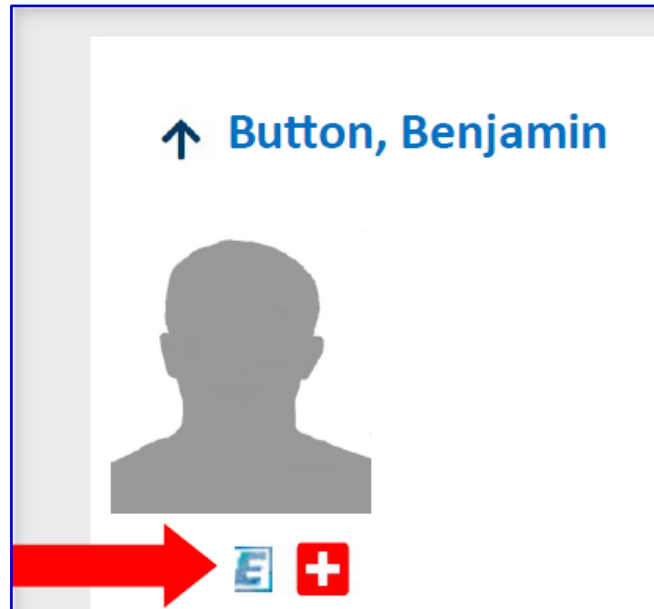
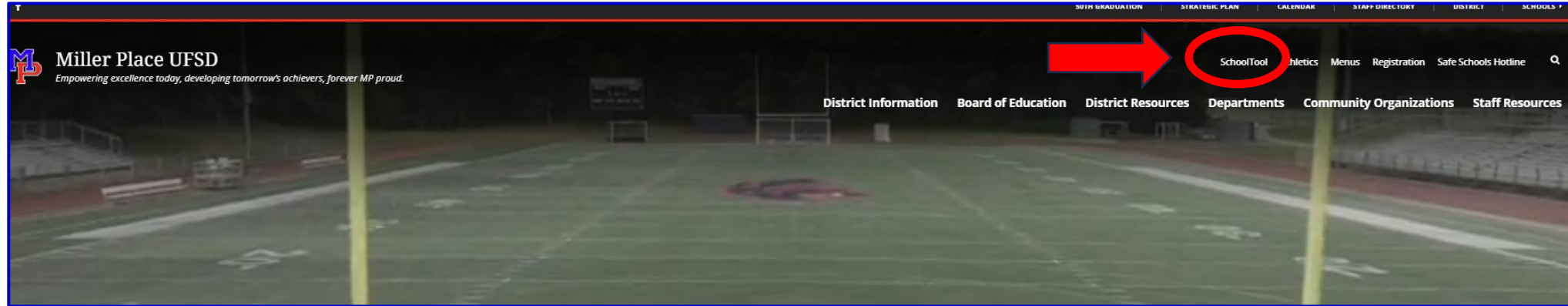
What can parents do?

- Use data as an opportunity to monitor you child's progress toward growth.
- Use data to discuss your child's progress with the classroom teacher and discuss strategies that you can use with your child at home.
- Practice a growth mindset with your child.
- Practice goal setting toward reaching growth goals.
- Encourage your child to read at home every day.
- Encourage your child to try always their best.

Empowering excellence today, developing tomorrow's achievers, forever Miller Place proud.



Accessing the NWEA Family Report



Empowering excellence today, developing tomorrow's achievers, forever Miller Place proud.

Understanding the NWEA Family Report

mapGROWTH Page 1
Shawn Tolopsky Student ID: ST529811468 | Grade 11
 Spring 2018 Family Report Sample High School

What is this report? A summary of how your child is... What do Achievement and Growth mean? Achievement: How well your child has learned skills

Mathematics

Average Achievement 60th Percentile

Term	Shawn	National Average Achievement
Winter '17	222	212
Spring '17	226	229
Fall '17	223	229
Winter '18	234	236
Spring '18	236	236

Shawn's overall score (RIT score) was a 236 on a scale of 100-350. Your child is in the 60th percentile, which means they scored better than 60% of their peers.

High Growth 86th Percentile

Your child's growth from Fall 2017 to Spring 2018 is in the 86th percentile, which means they made more progress than 86% of their peers.

Shawn is likely to be:

- Approaches on the State XYZ Assessment (if taken in Spring 2018)
- College ready on the ACT College Readiness (if taken in Spring 2018)
- Not On Track on the SAT (if taken in Spring 2018)

Reading

High Achievement 84th Percentile

Term	Shawn	National Average Achievement
Winter '17	220	207
Spring '17	226	227
Fall '17	226	227
Winter '18	236	227
Spring '18	236	227

High Growth 96th Percentile

Your child's growth from Fall 2017 to Spring 2018 is in the 96th percentile, which means they made more progress than 96% of their peers.

- National Growth Percentile
- Growth vs. achievement



Empowering excellence today, developing tomorrow's achievers, forever Miller Place proud.

Next Steps...

- Teachers have used NWEA data for student intervention and enrichment purposes and will also be using data to inform discussions with students and parents.
- Introduce students to goal setting toward MAP Growth goals.
- Provide professional development opportunities for teachers:
 - Analysis of MAP Growth student data.
 - Student conversations about goal setting and growth
 - Progress monitoring
 - Differentiation of instruction
 - Lesson planning

Empowering excellence today, developing tomorrow's achievers, forever Miller Place proud.



Additional NWEA Resources:

- Parents:
 - Miller Place UFSD website
 - NWEA/MAP Growth Assessment Information for Parents
 - NWEA Family Toolkit
- Students:
 - *The Mindset of a Champion*, TEDxTouth, Carson Byblow
 - *The Power of Yet*, ClassDojo

Empowering excellence today, developing tomorrow's achievers, forever Miller Place proud.



Questions?

Empowering excellence today, developing tomorrow's achievers, forever Miller Place proud.



Contact Information:

Ms. Susan Craddock - Assistant Superintendent

Mr. Kurt Roth - Administrator for Instruction and Data Reporting

Mr. Nick Corleto - Curriculum Specialist for Math, Science, Technology and Business

Mr. Matt Nicoletti - Curriculum Specialist for the Humanities

Mr. Evan Curran - Curriculum Specialist for Elementary Education

Ms. Christine Mangiamele – Principal, North Country Road Middle School

Ms. Jean Marie D'Aversa- Principal, Laddie A. Decker Sound Beach School

Ms. Laura Gewurz, Principal, Andrew Muller Primary School

Empowering excellence today, developing tomorrow's achievers, forever Miller Place proud.

