

Tomahawk Elementary School

6301 W 78th St. Shawnee Mission
KS, 66204

CONSTRUCTION UPDATE 02/28/2025

OWNER: Shawnee Mission School District

ARCHITECT: DLR Group

CM: JE DUNN

CURRENT PROGRESS

- Elevator Install
- Exterior Metal Wall Panels
- Exterior Site Work
- Painting Ceiling in Commons
- Second Floor Casework
- Interior/Exterior Storefront Install

2 WEEK LOOK AHEAD

- Gym Equipment Install
- Paint Commons
- First Floor Carpet Install
- Prep Area B Topping Slab
- Epoxy Flooring/Walls in Kitchen
- Wall Tile in Gym Bathrooms

SHAWNEE MISSION SCHOOL DISTRICT
TOMAHAWK ELEMENTARY SCHOOL
OPENING FALL 2025



SMSD Tomahawk Elementary School



Tomahawk Elementary School

6301 W 78th St. Shawnee Mission KS, 66204

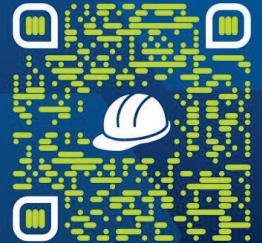


Exterior Metal Wall Panels Install



BUILDING THE FUTURE

A K-12 CONSTRUCTION EDUCATION INITIATIVE OF JE DUNN



BUILDINGTHEFUTURE.JEDUNN.COM



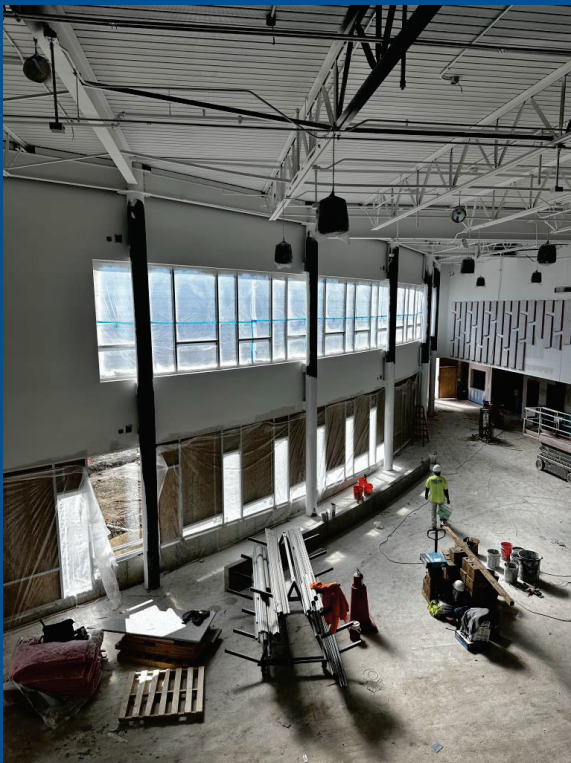
Epoxy Floor in Bathrooms



SMSD Tomahawk Elementary School



Tomahawk Elementary School
6301 W 78th St. Shawnee Mission KS,
66204



Commons Painting Progress

SAFETY
EVERYONE.
EVERYWHERE.
ALL THE TIME.



Admin Exterior Entrance



SMSD Tomahawk Elementary School



Tomahawk Elementary School

6301 W 78th St. Shawnee Mission
KS, 66204

CONSTRUCTION UPDATE 01/31/2025

OWNER: Shawnee Mission School District

ARCHITECT: DLR Group

CM: JE DUNN

CURRENT PROGRESS

- Gym Wall Tectum Panels Install
- Second Floor Painting in Classrooms
- Exterior Concrete Entrances
- Bathroom Tile Install
- Drywall Complete
- First Floor Casework Install

2 WEEK LOOK AHEAD

- MEP in Ceiling Grid
- Second Floor Casework Install
- Exterior Radius Storefront
- Grand Stair Concrete
- Exterior Metal Wall Panels

SHAWNEE MISSION SCHOOL DISTRICT
TOMAHAWK ELEMENTARY SCHOOL
OPENING FALL 2025



SHAWNEE MISSION
SCHOOL DISTRICT



DLR Group
Architects Engineers Planners Interiors



SMSD Tomahawk Elementary School



Tomahawk Elementary School

6301 W 78th St. Shawnee Mission KS, 66204

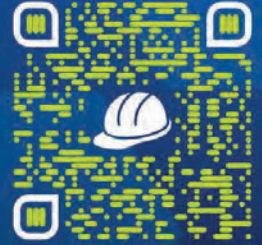


Gym Wall Tectum Panels

JEDUNN
CONSTRUCTION

BUILDING THE FUTURE

A K-12 CONSTRUCTION EDUCATION INITIATIVE OF JE DUNN



BUILDINGTHEFUTURE.JEDUNN.COM



First Floor Classroom Casework



SMSD Tomahawk Elementary School



Tomahawk Elementary School
6301 W 78th St. Shawnee Mission KS,
66204



First Floor Bathroom Tile

SAFETY
EVERYONE.
EVERYWHERE.
ALL THE TIME.



First Floor Commons Soffit Install



SMSD Tomahawk Elementary School



Tomahawk Elementary School

6301 W 78th St. Shawnee Mission
KS, 66204

CONSTRUCTION UPDATE 01/17/2025

OWNER: Shawnee Mission School
District

ARCHITECT: DLR Group

CM: JE DUNN

CURRENT PROGRESS

- First floor drywall Finishing
- Second Floor Drywall Finishing
- First Floor Light Fixture Install
- Ceiling Grid Install
- MEP In-Grid Install

2 WEEK LOOK AHEAD

- Drywall Complete Commons/Kitchen
- First Floor Ceiling and Wall Paint
- Second Floor Painting in Classrooms
- Exterior Radius Storefront
- Exterior Concrete Entrances

SHAWNEE MISSION SCHOOL DISTRICT
TOMAHAWK ELEMENTARY SCHOOL
OPENING FALL 2025



SHAWNEE MISSION
SCHOOL DISTRICT



DLR Group
Architects Engineers Planners Interiors



SMSD Tomahawk Elementary School



Tomahawk Elementary School

6301 W 78th St. Shawnee Mission KS, 66204

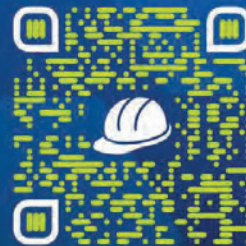


First Floor Painting

JEDUNN
CONSTRUCTION

BUILDING THE FUTURE

A K-12 CONSTRUCTION EDUCATION INITIATIVE OF JE DUNN



BUILDINGTHEFUTURE.JEDUNN.COM



First Floor Painting



SMSD Tomahawk Elementary School



Tomahawk Elementary School
6301 W 78th St. Shawnee Mission KS,
66204



Media Center Drywall Finished

SAFETY
EVERYONE.
EVERYWHERE.
ALL THE TIME.



Grand Stair Install



SMSD Tomahawk Elementary School



Tomahawk Elementary

School

6301 W 78th St. Shawnee Mission
KS, 66204

CONSTRUCTION UPDATE 1/03/2025

OWNER: Shawnee Mission School District

ARCHITECT: DLR Group

CM: JE DUNN

CURRENT PROGRESS

- First Floor Painting
- Admin Area Drywall Finishing
- Specialty Kitchen Appliance MEP Rough-In
- Second Floor Drywall Finishing
- HVAC Unit Commissioning
- Interior Storefront Install

2 WEEK LOOK AHEAD

- Begin Painting on Second Floor
- Ceiling Grid Install on First Floor
- Turn on Permanent HVAC Units
- Exterior Storefront Completion
- Grand Stair Install



SMSD Tomahawk Elementary School



Tomahawk Elementary School

6301 W 78th St. Shawnee Mission KS, 66204

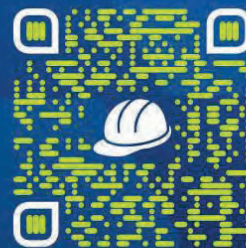


Commons Area Progress



BUILDING THE FUTURE

A K-12 CONSTRUCTION EDUCATION INITIATIVE OF JE DUNN



BUILDINGTHEFUTURE.JEDUNN.COM



First Floor Paint Progress



SMUSD Tomahawk Elementary School



Tomahawk Elementary School
6301 W 78th St. Shawnee Mission KS,
66204



Second Floor Drywall Progress

SAFETY
EVERYONE.
EVERYWHERE.
ALL THE TIME.



Interior Storefront Progress



SMSD Tomahawk Elementary School



**Tomahawk Elementary
School**
6301 W 78th St. Shawnee Mission
KS, 66204

CONSTRUCTION UPDATE 12/6/2024

OWNER: Shawnee Mission School
District
ARCHITECT: DLR Group
CM: JE DUNN

CURRENT PROGRESS

- First Floor Drywall Finishing
- Second Floor Drywall Install
- First Floor Light Fixture Install
- Main Distribution Panel Install

2 WEEK LOOK AHEAD

- Drywall Complete Downstairs
- Paint Beginning Downstairs
- In-Wall MEP complete
- Exterior Radius Storefront
- Exterior Concrete Entrances

SHAWNEE MISSION SCHOOL DISTRICT
TOMAHAWK ELEMENTARY SCHOOL
OPENING FALL 2025



SMSD Tomahawk Elementary School



Tomahawk Elementary School
6301 W 78th St. Shawnee Mission KS, 66204



Main Distribution Panel Install

JEDUNN
CONCRETE SOLUTIONS

**BUILDING
THE FUTURE**

A K-12 CONSTRUCTION EDUCATION INITIATIVE OF JEDUNN



BUILDINGTHEFUTURE.JEDUNN.COM



First Floor Drywall Finishing



SMSD Tomahawk Elementary School



Tomahawk Elementary School
6301 W 78th St. Shawnee Mission KS,
66204



Exterior Panel Insulation Install

SAFETY
EVERYONE.
EVERYWHERE.
ALL THE TIME.



Second Floor In-Wall MEP



SMSD Tomahawk Elementary School



**Tomahawk Elementary
School**
6301 W 78th St. Shawnee Mission
KS, 66204

CONSTRUCTION UPDATE 11/8/2024

OWNER: Shawnee Mission School
District
ARCHITECT: DLR Group
CM: JE DUNN

CURRENT PROGRESS

- Level 1 Drywall Install
- level 2 In-Wall MEP
- Exterior Glazing Install
- RTU Installation
- Art/makers Roof Install

2 WEEK LOOK AHEAD

- Drywall Finishing level 1
- Temporary heat will be turned on
- In-Wall MEP Install Level 2
- Roof Completion

SHAWNEE MISSION SCHOOL DISTRICT
TOMAHAWK ELEMENTARY SCHOOL
OPENING FALL 2025



SMSD Tomahawk Elementary School



Tomahawk Elementary School
6301 W 78th St. Shawnee Mission KS, 66204



First Floor Drywall Install

JEDUNN
CONSTRUCTION
**BUILDING
THE FUTURE**
A K-12 CONSTRUCTION EDUCATION INITIATIVE OF JEDUNN



BUILDINGTHEFUTURE.JEDUNN.COM



Exterior Glazing & Panel Install



SMSD Tomahawk Elementary School



Tomahawk Elementary School
6301 W 78th St. Shawnee Mission KS,
66204



RTU Installation

SAFETY
EVERYONE.
EVERYWHERE.
ALL THE TIME.



Second Floor Interior MEP



SMSD Tomahawk Elementary School



**Tomahawk Elementary
School**
6301 W 78th St. Shawnee Mission
KS, 66204

CONSTRUCTION UPDATE 10/15/2024

OWNER: Shawnee Mission School
District
ARCHITECT: DLR Group
CM: JE DUNN

CURRENT PROGRESS

- Second Floor Interior Framing
- Area B Roof Install
- Main Entrance Brick Install
- First Floor In-wall Rough-In
- First Floor Window Install

2 WEEK LOOK AHEAD

- Roof Will Be Completed
- First Floor Interior Drywall
- Second Floor Interior Rough-In
- Kitchen Area Brick Install
- Exterior Metal Panel Install

SHAWNEE MISSION SCHOOL DISTRICT
TOMAHAWK ELEMENTARY SCHOOL
OPENING FALL 2025



SMSD Tomahawk Elementary School



Tomahawk Elementary School
6301 W 78th St. Shawnee Mission KS, 66204



First Floor Interior Framing

JEDUNN
CONSTRUCTION
**BUILDING
THE FUTURE**
A K-12 CONSTRUCTION EDUCATION INITIATIVE OF JEDUNN



BUILDINGTHEFUTURE.JEDUNN.COM



Exterior Brick Install Progress



SMSD Tomahawk Elementary School



Tomahawk Elementary School
6301 W 78th St. Shawnee Mission KS,
66204



Second Floor Interior Framing

SAFETY
EVERYONE.
EVERYWHERE.
ALL THE TIME.



Roof Install Progress



SMSD Tomahawk Elementary School



**Tomahawk Elementary
School**
6301 W 78th St. Shawnee Mission
KS, 66204

CONSTRUCTION UPDATE 9/18/2024

OWNER: Shawnee Mission School
District
ARCHITECT: DLR Group
CM: JE DUNN

CURRENT PROGRESS

- First Floor Interior Framing
- South Parking Lot Asphalt Install
- First Floor Overhead MEP
- Exterior Brick Install
- Area A Roof Install

2 WEEK LOOK AHEAD

- Area B Roof Install
- Exterior Metal Panel Install
- Exterior Brick Install
- First Floor In-Wall Rough-In
- Second Floor Overhead MEP

SHAWNEE MISSION SCHOOL DISTRICT
TOMAHAWK ELEMENTARY SCHOOL
OPENING FALL 2025



SMSD Tomahawk Elementary School

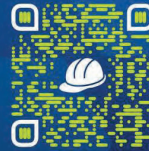


Tomahawk Elementary School
6301 W 78th St. Shawnee Mission KS, 66204



**BUILDING
THE FUTURE**

A K-12 CONSTRUCTION EDUCATION INITIATIVE OF J. DUNN



BUILDINGTHEFUTURE.JEDUNN.COM



Area A Brick Install



Interior Framing Install



SMSD Tomahawk Elementary School

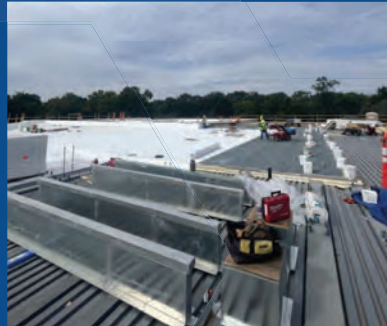


Tomahawk Elementary School
6301 W 78th St. Shawnee Mission KS,
66204



South Lot Asphalt Install

SAFETY
EVERYONE.
EVERYWHERE.
ALL THE TIME.



Area A Roof Install



SMSD Tomahawk Elementary School



**Tomahawk Elementary
School**
6301 W 78th St. Shawnee Mission
KS, 66204

CONSTRUCTION UPDATE 8/23/2024

OWNER: Shawnee Mission School
District
ARCHITECT: DLR Group
CM: JE DUNN

CURRENT PROGRESS

- Area B Exterior Stud Framing/Sheathing
- Area A Overhead MEP
- Area A Weatherproofing
- Gym Roof Install
- Gym Masonry Wall Install

2 WEEK LOOK AHEAD

- Area A/B Roof Install
- Area A Interior Framing
- Area B Overhead MEP
- Area B Weatherproofing
- Exterior Masonry Install

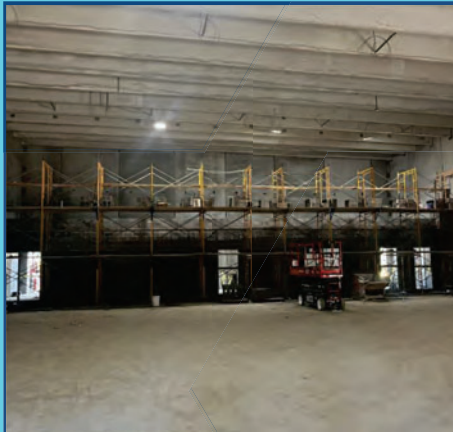
SHAWNEE MISSION SCHOOL DISTRICT
TOMAHAWK ELEMENTARY SCHOOL
OPENING FALL 2025



SMSD Tomahawk Elementary School



Tomahawk Elementary School
6301 W 78th St. Shawnee Mission KS, 66204



Gym CMU Wall Install

JEDUNN
CONSTRUCTION
**BUILDING
THE FUTURE**
A K-12 CONSTRUCTION EDUCATION INITIATIVE OF JEDUNN



BUILDINGTHEFUTURE.JEDUNN.COM



South Radius Wall Progress



SMSD Tomahawk Elementary School



Tomahawk Elementary School
6301 W 78th St. Shawnee Mission KS,
66204



Overhead MEP Progress

SAFETY
EVERYONE.
EVERYWHERE.
ALL THE TIME.



Gym Roof Install



SMSD Tomahawk Elementary School



**Tomahawk Elementary
School**
6301 W 78th St. Shawnee Mission
KS, 66204

CONSTRUCTION UPDATE 7/05/2024

OWNER: Shawnee Mission School
District
ARCHITECT: DLR Group
CM: JE DUNN

CURRENT PROGRESS

- Area A Structural Steel Detailing
- Slab On Grade Concrete Complete
- Light Pole Base Layout
- Area B Structural Steel Installation

2 WEEK LOOK AHEAD

- Area B Structural Steel Detailing
- Area A Slab On Metal Deck Concrete Floor
- Exterior Framing

SHAWNEE MISSION SCHOOL DISTRICT
TOMAHAWK ELEMENTARY SCHOOL
OPENING FALL 2025



SMSD Tomahawk Elementary School



Tomahawk Elementary School
6301 W 78th St. Shawnee Mission KS, 66204

JEDUNN
CONSTRUCTION
**BUILDING
THE FUTURE**
A K-12 CONSTRUCTION EDUCATION INITIATIVE OF JEDUNN



BUILDINGTHEFUTURE.JEDUNN.COM



Area A Structural Steel Detailing



Completed Concrete Slab



SMSD Tomahawk Elementary School



Tomahawk Elementary School
6301 W 78th St. Shawnee Mission KS,
66204



Kitchen Structural Steel Erection

SAFETY
EVERYONE.
EVERYWHERE.
ALL THE TIME.



West Side Site View



SMSD Tomahawk Elementary School



**Tomahawk Elementary
School**
6301 W 78th St. Shawnee Mission
KS, 66204

CONSTRUCTION UPDATE 6/21/2024

OWNER: Shawnee Mission School
District
ARCHITECT: DLR Group
CM: JE DUNN

CURRENT PROGRESS

- Area A Structural Steel Erection
- Kitchen/Gym Slab Install
- Underground MEP Completed

2 WEEK LOOK AHEAD

- Area A Structural Steel Detailing
- Slab On Grade Concrete Complete
- Light Pole Bases Install

SHAWNEE MISSION SCHOOL DISTRICT
TOMAHAWK ELEMENTARY SCHOOL
OPENING FALL 2025



SMSD Tomahawk Elementary School



Tomahawk Elementary School
6301 W 78th St. Shawnee Mission KS, 66204

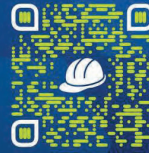


Area A Structural Steel Install

JEDUNN
CONSTRUCTION

**BUILDING
THE FUTURE**

A K-12 CONSTRUCTION EDUCATION INITIATIVE OF J. DUNN



BUILDINGTHEFUTURE.JEDUNN.COM



Area A Steel



SMSD Tomahawk Elementary School



Tomahawk Elementary School
6301 W 78th St. Shawnee Mission KS,
66204

SAFETY
EVERYONE.
EVERYWHERE.
ALL THE TIME.



Kitchen Concrete Slab Preparation



North West Corner Site View



SMSD Tomahawk Elementary School



**Tomahawk Elementary
School**
6301 W 78th St. Shawnee Mission
KS, 66204

CONSTRUCTION UPDATE 6/7/2024

OWNER: Shawnee Mission School
District
ARCHITECT: DLR Group
CM: JE DUNN

CURRENT PROGRESS

- Area A & B Recessed Slab Install
- Area B South Slab Install
- Kitchen Underground MEP
- Gym Underground MEP

2 WEEK LOOK AHEAD

- Kitchen Slab Install
- Gym Slab Install
- Area A Structural Steel Erection

SHAWNEE MISSION SCHOOL DISTRICT
TOMAHAWK ELEMENTARY SCHOOL
OPENING FALL 2025



SMSD Tomahawk Elementary School



Tomahawk Elementary School
6301 W 78th St. Shawnee Mission KS, 66204



Area A Slab Install

JEDUNN
CONSTRUCTION
**BUILDING
THE FUTURE**
A K-12 CONSTRUCTION EDUCATION INITIATIVE OF JEDUNN



BUILDINGTHEFUTURE.JEDUNN.COM



Cafeteria Slab Install



SMSD Tomahawk Elementary School



Tomahawk Elementary School
6301 W 78th St. Shawnee Mission KS,
66204



Completed FEMA Gym Install

SAFETY
EVERYONE.
EVERYWHERE.
ALL THE TIME.



Kitchen Underground MEP



SMSD Tomahawk Elementary School



**Tomahawk Elementary
School**
6301 W 78th St. Shawnee Mission
KS, 66204

CONSTRUCTION UPDATE 5/24/2024

OWNER: Shawnee Mission School
District
ARCHITECT: DLR Group
CM: JE DUNN

CURRENT PROGRESS

- Area A/B South Underground MEP
- Grouting of Pre-Cast Concrete

2 WEEK LOOK AHEAD

- Area B South Slab Install
- Structural Steel Delivers to Site
- Kitchen Underground MEP
- Gym Slab Install

SHAWNEE MISSION SCHOOL DISTRICT
TOMAHAWK ELEMENTARY SCHOOL
OPENING FALL 2025



SMSD Tomahawk Elementary School



Tomahawk Elementary School
6301 W 78th St. Shawnee Mission KS, 66204



**BUILDING
THE FUTURE**

A K-12 CONSTRUCTION EDUCATION INITIATIVE OF JEDUNN



BUILDINGTHEFUTURE.JEDUNN.COM



Ongoing Underground MEP



Area B North Slab Install



SMSD Tomahawk Elementary School



Tomahawk Elementary School
6301 W 78th St. Shawnee Mission KS,
66204



Installed FEMA Gym

SAFETY
EVERYONE.
EVERYWHERE.
ALL THE TIME.



FEMA Gym Install



SMSD Tomahawk Elementary School



**Tomahawk Elementary
School**
6301 W 78th St. Shawnee Mission
KS, 66204

CONSTRUCTION UPDATE 4/19/2024

OWNER: Shawnee Mission School
District
ARCHITECT: DLR Group
CM: JE DUNN

CURRENT PROGRESS

- Area B Footing Install
- Area A Underground MEP Install
- Site Utility Install

2 WEEK LOOK AHEAD

- Area B Underground MEP Install
- Area A Concrete Slab Install



SMSD Tomahawk Elementary School



Tomahawk Elementary School
6301 W 78th St. Shawnee Mission KS, 66204



**BUILDING
THE FUTURE**

A K-12 CONSTRUCTION EDUCATION INITIATIVE OF JEDUNN



BUILDINGTHEFUTURE.JEDUNN.COM



Retaining Wall Progress



Underground MEP Area A



SMSD Tomahawk Elementary School



Tomahawk Elementary School
6301 W 78th St. Shawnee Mission KS,
66204



Area B Footing Install

SAFETY
EVERYONE.
EVERYWHERE.
ALL THE TIME.



Admin Area Concrete Install



SMSD Tomahawk Elementary School



**Tomahawk Elementary
School**
6301 W 78th St. Shawnee Mission
KS, 66204

CONSTRUCTION UPDATE 4/5/2024

OWNER: Shawnee Mission School
District
ARCHITECT: DLR Group
CM: JE DUNN

CURRENT PROGRESS
- Area A Footing Install
- Underground MEP Install
- Retaining Wall Install

2 WEEK LOOK AHEAD
- Area A Concrete Slab Install
- Area B Footings Install



SMSD Tomahawk Elementary School



Tomahawk Elementary School
6301 W 78th St. Shawnee Mission KS, 66204



Retaining Wall Install

JEDUNN
CONCRETE BUILDING TECHNOLOGY

**BUILDING
THE FUTURE**

A K-12 CONSTRUCTION EDUCATION INITIATIVE OF JEDUNN



BUILDINGTHEFUTURE.JEDUNN.COM



Radius Storefront Footings



SMSD Tomahawk Elementary School



Tomahawk Elementary School
6301 W 78th St. Shawnee Mission KS,
66204



Gym Footing Install

SAFETY
EVERYONE.
EVERYWHERE.
ALL THE TIME.



Site Utilities Install



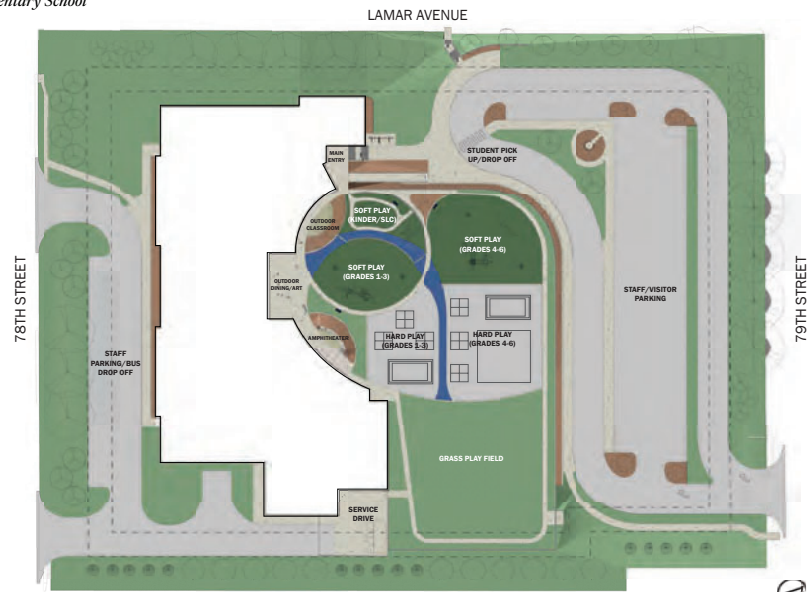
SMSD Tomahawk Elementary School



Tomahawk Elementary School
Media Center



Tomahawk Elementary School
Site Plan



Tomahawk Elementary School
Floor Plan: Level 01



Tomahawk Elementary School
Floor Plan: Level 02



TOMAHAWK ELEMENTARY SCHOOL
 05/18/2023
 Town Hall Open House

REVISIONS
 PD SD 05 CD

Copyright © 2023
 All rights reserved. No part of this publication may be reproduced without permission from the publisher.



Tomahawk Elementary School

Exterior - Looking Toward Commons



Tomahawk Elementary School

Exterior - Looking Toward Playgrounds



DLRGGROUP

Tomahawk Elementary School
Main Entry



Tomahawk Elementary School
Dining Commons

