

LEA Name : Carlynton SD
Address : 435 Kings Hwy
Carnegie, PA 15106

County : Allegheny
AUN Number : 103021603
LEA Type : SD

Annual Financial Report
Accuracy Certification Statement
For Fiscal Year Ending
6/30/2024

Pennsylvania Department of Education
&

Office of Comptroller Operations

PDE-2056: Intermediate Unit

PDE-2057: School District, AVTS/CTC, Charter School,
and Special Program Jointure

CERTIFICATION: By signing this page I agree that the electronic data submitted is a complete and accurate statement of the financial operations and status of the local education agency for the fiscal year. It has been prepared in accordance with generally accepted accounting principles and established Commonwealth of PA reporting guidelines.



Chief School Administrator Signature



Board Secretary Signature

Date

4/25/2024

Date

11/25/2024

Keith Bielby

Contact Person

keith.bielby@carlynton.k12.pa.us

Contact Person E-mail Address

(412)429-2500

Ext :

Contact Person Telephone Number

Contact Person Fax Number

Audit Certification

Annual Financial Report:

For Fiscal Year Ending 6/30/2024

(Pursuant to PA School Code Section 218(b))

LEA Name : Carlynton SD
AUN Number : 103021603
County : Allegheny

Audit Certification Due:
12/31/2024

This certification is applicable to the Annual Financial Report data submitted through the Consolidated Financial Reporting System (CFRS).


CERTIFICATION: By signing this page I agree that the financial statements of the school have been properly audited as noted above pursuant to Article XXIV, and in the auditor's professional opinion, the Annual Financial Report (PDE-2057) submitted through CFRS is materially consistent with the audited financial statements.

Chief School Administrator


Signature

11/25/2024
Date

Board Secretary


Signature

11/25/2024
Date

Keith Bielby

Contact Person

keith.bielby@carlynton.k12.pa.us

Contact Person E-mail Address

(412)429-2500

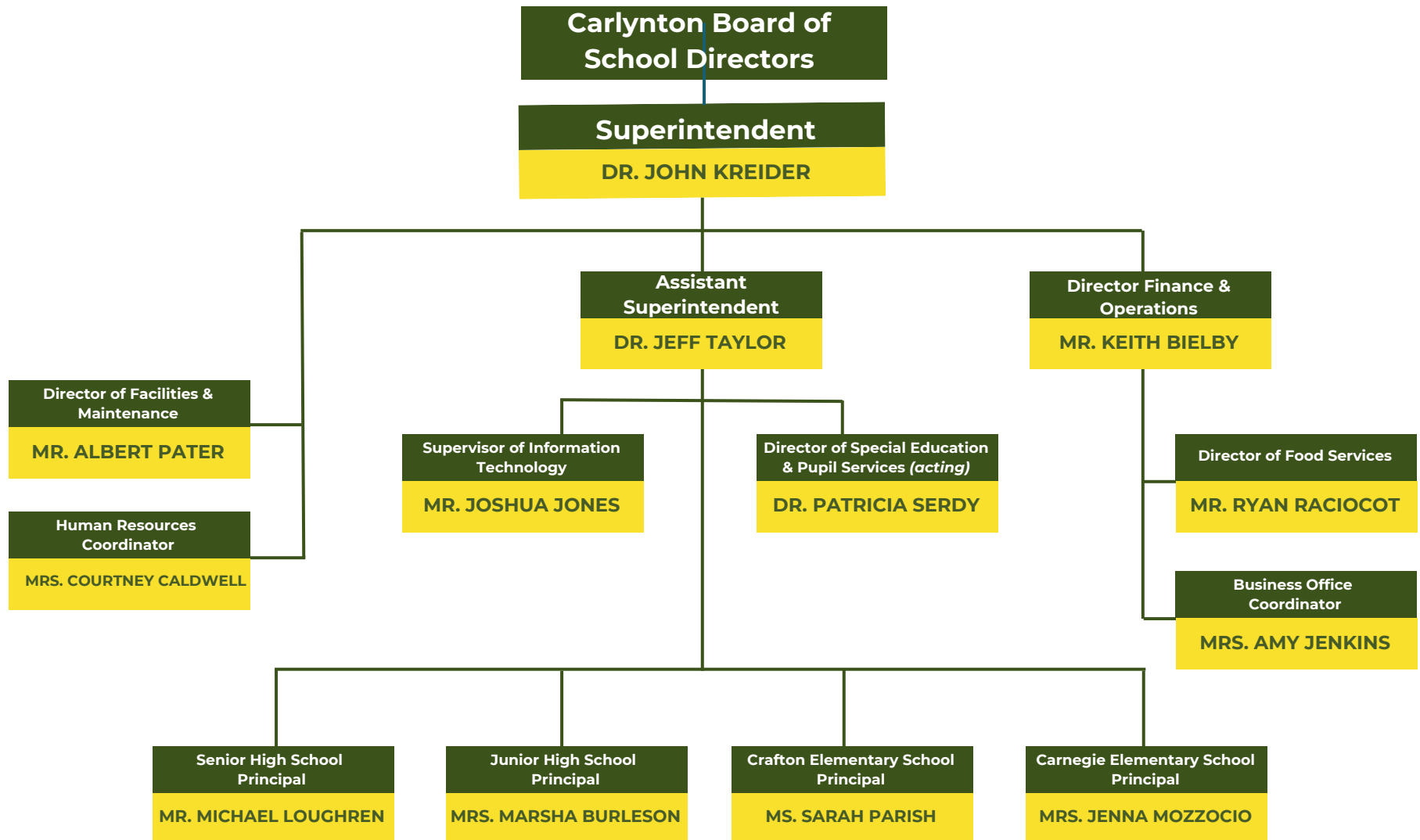
Contact Person Telephone Number

Ext :

Contact Person Fax Number

CARLYNTON SCHOOL DISTRICT

2024-2025 Organizational Chart





Book	policy manual
Section	600 Finances
Title	GASB Statement 34
Code	622
Status	Active
Legal	1. 24 P.S. 218 2. 24 P.S. 613 Governmental Accounting Standards Board, Statement No. 34
Adopted	February 19, 2018

Purpose

The Board recognizes the need to implement the required accounting and financial reporting standards stipulated by the Pennsylvania Department of Education.

The primary objectives of implementing the Governmental Accounting Standards Board (GASB) Statement 34 are to assure compliance with state requirements, and properly account for both the financial and economic resources of the district.

Authority

Participation of the school district in any such activity shall be in accordance with Board policy.[\[1\]](#)[\[2\]](#)

Delegation of Responsibility

The responsibility to coordinate the compilation and preparation of all information necessary to implement this policy is delegated to the Business Manager.

The designated individual shall be responsible for implementing the necessary procedures to establish and maintain a fixed asset inventory, including depreciation schedules. Depreciation shall be computed on a straight-line basis over the useful lives of the assets, using an averaging convention. Normal maintenance and repairs shall be charged to expense as incurred; major renewals and betterments that materially extend the life or increase the value of the asset shall be capitalized. A schedule of accumulated depreciation shall be consistent from year to year. The basis for depreciation, including groups of assets and useful lives, shall be in writing and submitted for review to the Board.

The Business Manager shall prepare the required Management Discussion and Analysis (MD&A). The MD&A shall be in the form required by GASB Statement 34 and shall be submitted to the Board for approval, prior to publication.

Prior to submission of the MD&A for Board approval, the district's independent auditors shall review the MD&A, in accordance with SAS No. 52, "Required Supplementary Information".

Guidelines

For all other assets not acquired by debt proceeds, the dollar value of any single item for inclusion in the fixed assets accounts shall not be less than \$10,000.

<u>Val Number</u>	<u>Description</u>	<u>Justification</u>
50440	<p>SESS - 2260 Instruction and Curriculum Development Services: SESS Schedule amounts for Special Education vary from prior year by 40% or more. Correct the data or enter a justification.</p> <p>SESS Schedule 2260: \$69,574.08 Prior Year SESS Schedule 2260: \$228,898.30</p>	<p>The previous year the district with the use of the ESSER funds was able to upgrade the curriculum and books for Special Education Students and had a full time Director of Curriculum. Curriculum director retired this year in Feb resulting in less expend.</p>

LEA : 103021603 Carlynton SD

Printed 11/25/2024 1:59:21 PM

Amounts Expressed in Whole Dollars		<u>General Fund</u> <u>(10)</u>	<u>Student Sponsored</u> <u>Activity Fund</u> <u>(21)</u>	<u>Public Purpose Trust</u> <u>(27)</u>	<u>Other Compt Approved</u> <u>(28)</u>	<u>Athletic / Activity</u> <u>(29)</u>
Assets And Deferred Outflows Of Resources						
Assets						
0100	Cash and Cash Equivalents	11,528,025				
0110	Investments					
0120	Taxes Receivable	3,976,233				
0130	Due From Other Funds					
0141	Due From Other Governments	832,952				
0142	State Revenue Receivable					
0143	Federal Revenue Receivable					
0145	Other Intergovernmental Revenue Receivable					
0146	Due from Primary Government					
0147	Due from Component Unit					
0150	Other Receivables	378,281				
0170	Inventories					
0180	Prepaid Expenses (Expenditures)	454,405				
0190	Other Current Assets					
Total Assets		\$17,169,896				
0910	Deferred Outflows of Resources					
Total Assets And Deferred Outflows Of Resources		\$17,169,896				

LEA : 103021603 Carlynton SD

Amounts Expressed in Whole Dollars		<u>Capital Reserve (690.</u> <u>1850)</u> <u>(31)</u>	<u>Capital Reserve (1431)</u> <u>(32)</u>	<u>Other Capital Projects</u> <u>Fund</u> <u>(39)</u>	<u>Debt Service</u> <u>(40)</u>	<u>Permanent</u> <u>(90)</u>
Assets And Deferred Outflows Of Resources						
Assets						
0100	Cash and Cash Equivalents			693,143		
0110	Investments					
0120	Taxes Receivable					
0130	Due From Other Funds					
0141	Due From Other Governments					
0142	State Revenue Receivable					
0143	Federal Revenue Receivable					
0145	Other Intergovernmental Revenue Receivable					
0146	Due from Primary Government					
0147	Due from Component Unit					
0150	Other Receivables					
0170	Inventories					
0180	Prepaid Expenses (Expenditures)					
0190	Other Current Assets					
Total Assets				\$693,143		
0910	Deferred Outflows of Resources					
Total Assets And Deferred Outflows Of Resources				\$693,143		

LEA : 103021603 Carlynton SD

Printed 11/25/2024 1:59:21 PM

Amounts Expressed in Whole Dollars		<u>Total Governmental</u> <u>Funds</u>
Assets And Deferred Outflows Of Resources		
Assets		
0100 Cash and Cash Equivalents	12,221,168	
0110 Investments		
0120 Taxes Receivable	3,976,233	
0130 Due From Other Funds		
0141 Due From Other Governments	832,952	
0142 State Revenue Receivable		
0143 Federal Revenue Receivable		
0145 Other Intergovernmental Revenue Receivable		
0146 Due from Primary Government		
0147 Due from Component Unit		
0150 Other Receivables	378,281	
0170 Inventories		
0180 Prepaid Expenses (Expenditures)	454,405	
0190 Other Current Assets		
Total Assets	\$17,863,039	
0910 Deferred Outflows of Resources		
Total Assets And Deferred Outflows Of Resources	\$17,863,039	

LEA : 103021603 Carlynton SD

Printed 11/25/2024 1:59:21 PM

Amounts Expressed in Whole Dollars		<u>General Fund</u> <u>(10)</u>	<u>Student Sponsored</u> <u>Activity Fund</u> <u>(21)</u>	<u>Public Purpose Trust</u> <u>(27)</u>	<u>Other Compt Approved</u> <u>(28)</u>	<u>Athletic / Activity</u> <u>(29)</u>
Liabilities And Deferred Inflows Of Resources And Fund Balances						
Liabilities						
0400	Due to Other Funds	28,588				
0411	Due to Other Governments					
0412	Due to Primary Government					
0413	Due to Component Unit					
0420	Accounts Payable	385,293				
0430	Contracts Payable					
0440	Current Portion of Long-Term Debt					
0450	Short-Term Payables					
0461	Accrued Salaries and Benefits	3,637,941				
0462	Payroll Deductions and Withholding	238,674				
0480	Unearned Revenues					
0490	Other Current Liabilities					
Total Liabilities		\$4,290,496				
0950	Deferred Inflows of Resources	3,425,378				
Fund Balances						
0810	Nonspendable Fund Balance	454,405				
0820	Restricted Fund Balance					
0830	Committed Fund Balance					
0840	Assigned Fund Balance	622,500				
0850	Unassigned Fund Balance	8,377,117				
Total Fund Balances		\$9,454,022				
Total Liabilities, Deferred Inflows Of Resources And Fund Balances		\$17,169,896				

LEA : 103021603 Carlynton SD

Printed 11/25/2024 1:59:21 PM

Amounts Expressed in Whole Dollars		<u>Capital Reserve (690.</u> <u>1850)</u> <u>(31)</u>	<u>Capital Reserve (1431)</u> <u>(32)</u>	<u>Other Capital Projects</u> <u>Fund</u> <u>(39)</u>	<u>Debt Service</u> <u>(40)</u>	<u>Permanent</u> <u>(90)</u>
Liabilities And Deferred Inflows Of Resources And Fund Balances						
Liabilities						
0400	Due to Other Funds					
0411	Due to Other Governments					
0412	Due to Primary Government					
0413	Due to Component Unit					
0420	Accounts Payable			48,109		
0430	Contracts Payable					
0440	Current Portion of Long-Term Debt					
0450	Short-Term Payables					
0461	Accrued Salaries and Benefits					
0462	Payroll Deductions and Withholding					
0480	Unearned Revenues					
0490	Other Current Liabilities					
Total Liabilities				\$48,109		
0950	Deferred Inflows of Resources					
Fund Balances						
0810	Nonspendable Fund Balance					
0820	Restricted Fund Balance					
0830	Committed Fund Balance					
0840	Assigned Fund Balance			645,034		
0850	Unassigned Fund Balance					
Total Fund Balances				\$645,034		
Total Liabilities, Deferred Inflows Of Resources And Fund Balances				\$693,143		

LEA : 103021603 Carlynton SD

Printed 11/25/2024 1:59:21 PM

Amounts Expressed in Whole Dollars		<u>Total Governmental</u> <u>Funds</u>
Liabilities And Deferred Inflows Of Resources And Fund Balances		
Liabilities		
0400 Due to Other Funds		28,588
0411 Due to Other Governments		
0412 Due to Primary Government		
0413 Due to Component Unit		
0420 Accounts Payable		433,402
0430 Contracts Payable		
0440 Current Portion of Long-Term Debt		
0450 Short-Term Payables		
0461 Accrued Salaries and Benefits		3,637,941
0462 Payroll Deductions and Withholding		238,674
0480 Unearned Revenues		
0490 Other Current Liabilities		
Total Liabilities		\$4,338,605
0950 Deferred Inflows of Resources		3,425,378
Fund Balances		
0810 Nonspendable Fund Balance		454,405
0820 Restricted Fund Balance		
0830 Committed Fund Balance		
0840 Assigned Fund Balance		1,267,534
0850 Unassigned Fund Balance		8,377,117
Total Fund Balances		\$10,099,056
Total Liabilities, Deferred Inflows Of Resources And Fund Balances		\$17,863,039

Amounts Expressed in Whole Dollars	<u>General Fund</u> <u>(10)</u>	<u>Student Sponsored</u> <u>Activity Fund</u> <u>(21)</u>	<u>Public Purpose Trust</u> <u>(27)</u>	<u>Other Compt Approved</u> <u>(28)</u>	<u>Athletic / Activity</u> <u>(29)</u>
Revenues					
6000 Revenue from Local Sources	22,708,004				
7000 Revenue from State Sources	10,653,518				
8000 Revenue from Federal Sources	1,432,897				
Total Revenues	\$34,794,419				
Expenditures					
1000 Instruction	21,770,912				
2000 Support Services	10,857,764				
3000 Operation of Non-Instructional Services	838,238				
4000 Facilities Acquisition, Construction and Improvement Services	313,475				
5110 Debt Service	330,406				
5130 Refund of Prior Year Revenues / Receipts	270,615				
5140 Leases and Other Right-to-Use Arrangements	50,471				
Total Expenditures	\$34,431,881				
Excess (Deficiency) Of Revenues Over Expenditures	\$362,538				
Other Financing Sources (Uses)					
9110 Face Value of Bonds Issued					
9120 Proceeds from Refunding of Bonds					
9130 Bond Premiums					
9200 Proceeds from Extended Term Financing, Leases, and Other Right-to-Use Arrangements					
9300 Interfund Transfers - IN					
9400 Sale of or Compensation for Loss of Fixed Assets	200				
9710 Transfers from Component Units					
9720 Transfers from Primary Governments					
9910 Other Financing Sources Not Listed in the 9000 Series					
9990 Insurance Recoveries					
5120 Debt Service – Refunded Bonds					
5150 Bond Discounts					
5200 Interfund Transfers – Out	385,000				
5300 Transfers Out to Component Units/Primary Governments					
Total Other Financing Sources (Uses)	(\$384,800)				

Amounts Expressed in Whole Dollars		<u>Capital Reserve (690.</u> <u>1850)</u> <u>(31)</u>	<u>Capital Reserve (1431)</u> <u>(32)</u>	<u>Other Capital Projects</u> <u>Fund</u> <u>(39)</u>	<u>Debt Service</u> <u>(40)</u>	<u>Permanent</u> <u>(90)</u>
Revenues						
6000	Revenue from Local Sources			57,727		
7000	Revenue from State Sources					
8000	Revenue from Federal Sources					
Total Revenues				\$57,727		
Expenditures						
1000	Instruction					
2000	Support Services					
3000	Operation of Non-Instructional Services					
4000	Facilities Acquisition, Construction and Improvement Services					
5110	Debt Service					
5130	Refund of Prior Year Revenues / Receipts					
5140	Leases and Other Right-to-Use Arrangements					
Total Expenditures						
Excess (Deficiency) Of Revenues Over Expenditures				\$57,727		
Other Financing Sources (Uses)						
9110	Face Value of Bonds Issued					
9120	Proceeds from Refunding of Bonds					
9130	Bond Premiums					
9200	Proceeds from Extended Term Financing, Leases, and Other Right-to-Use Arrangements					
9300	Interfund Transfers - IN			385,000		
9400	Sale of or Compensation for Loss of Fixed Assets					
9710	Transfers from Component Units					
9720	Transfers from Primary Governments					
9910	Other Financing Sources Not Listed in the 9000 Series					
9990	Insurance Recoveries					
5120	Debt Service – Refunded Bonds					
5150	Bond Discounts					
5200	Interfund Transfers – Out					
5300	Transfers Out to Component Units/Primary Governments					
Total Other Financing Sources (Uses)				\$385,000		

Amounts Expressed in Whole Dollars		<u>Total Governmental Funds</u>
Revenues		
6000	Revenue from Local Sources	22,765,731
7000	Revenue from State Sources	10,653,518
8000	Revenue from Federal Sources	1,432,897
Total Revenues		\$34,852,146
Expenditures		
1000	Instruction	21,770,912
2000	Support Services	10,857,764
3000	Operation of Non-Instructional Services	838,238
4000	Facilities Acquisition, Construction and Improvement Services	313,475
5110	Debt Service	330,406
5130	Refund of Prior Year Revenues / Receipts	270,615
5140	Leases and Other Right-to-Use Arrangements	50,471
Total Expenditures		\$34,431,881
Excess (Deficiency) Of Revenues Over Expenditures		\$420,265
Other Financing Sources (Uses)		
9110	Face Value of Bonds Issued	
9120	Proceeds from Refunding of Bonds	
9130	Bond Premiums	
9200	Proceeds from Extended Term Financing, Leases, and Other Right-to-Use Arrangements	
9300	Interfund Transfers - IN	385,000
9400	Sale of or Compensation for Loss of Fixed Assets	200
9710	Transfers from Component Units	
9720	Transfers from Primary Governments	
9910	Other Financing Sources Not Listed in the 9000 Series	
9990	Insurance Recoveries	
5120	Debt Service – Refunded Bonds	
5150	Bond Discounts	
5200	Interfund Transfers – Out	385,000
5300	Transfers Out to Component Units/Primary Governments	
Total Other Financing Sources (Uses)		\$200

Amounts Expressed in Whole Dollars		<u>General Fund</u> <u>(10)</u>	<u>Student Sponsored</u> <u>Activity Fund</u> <u>(21)</u>	<u>Public Purpose Trust</u> <u>(27)</u>	<u>Other Compt Approved</u> <u>(28)</u>	<u>Athletic / Activity</u> <u>(29)</u>
Special And Extraordinary Items						
9920	Special Items – Gains					
9930	Extraordinary Items – Gains					
5520	Special Items – Losses					
5530	Extraordinary Items – Losses					
Net Change In Fund Balances		(\$22,262)				
Fund Balance						
0001	Fund Balance - Beginning of Fiscal Year	9,476,284				
Fund Balance - End Of Year		\$9,454,022				

Amounts Expressed in Whole Dollars		<u>Capital Reserve (690.</u> <u>1850)</u> <u>(31)</u>	<u>Capital Reserve (1431)</u> <u>(32)</u>	<u>Other Capital Projects</u> <u>Fund</u> <u>(39)</u>	<u>Debt Service</u> <u>(40)</u>	<u>Permanent</u> <u>(90)</u>
Special And Extraordinary Items						
9920	Special Items – Gains					
9930	Extraordinary Items – Gains					
5520	Special Items – Losses					
5530	Extraordinary Items – Losses					
Net Change In Fund Balances				\$442,727		
Fund Balance						
0001	Fund Balance - Beginning of Fiscal Year			202,307		
Fund Balance - End Of Year				\$645,034		

Amounts Expressed in Whole Dollars		<u>Total Governmental</u> <u>Funds</u>
Special And Extraordinary Items		
9920	Special Items – Gains	
9930	Extraordinary Items – Gains	
5520	Special Items – Losses	
5530	Extraordinary Items – Losses	
Net Change In Fund Balances		\$420,465
Fund Balance		
0001	Fund Balance - Beginning of Fiscal Year	9,678,591
Fund Balance - End Of Year		\$10,099,056

LEA : 103021603 Carlynton SD

Printed 11/25/2024 1:59:28 PM

Amounts Expressed in Whole Dollars		<u>Food Service</u> <u>(51)</u>	<u>Child Care</u> <u>Operations</u> <u>(52)</u>	<u>Other Enterprise</u> <u>(58)</u>	<u>TOTAL</u>	<u>Internal Service</u> <u>(60)</u>
Assets And Deferred Outflows Of Resources						
Current Assets						
0100	Cash and Cash Equivalents	681,033			681,033	
0110	Investments					
0130	Due From Other Funds	28,588			28,588	
0141	Due From Other Governments					
0142	State Revenue Receivable					
0143	Federal Revenue Receivable					
0146	Due from Primary Government					
0147	Due from Component Unit					
0150	Other Receivables	3,218			3,218	
0170	Inventories	21,602			21,602	
0180	Prepaid Expenses (Expenditures)					
0190	Other Current Assets					
Total Current Assets		\$734,441			\$734,441	
Noncurrent Assets						
0211	Land					
0212	Site Improvements (Net)					
0220	Buildings and Building Improvements (Net)					
0230	Tangible Property and Intangible Right-To-Use Assets (Net)					
0250	Construction in Progress					
0260	Long Term Prepayments					
0290	Other Noncurrent Assets	59,978			59,978	
Total Noncurrent Assets		\$59,978			\$59,978	
0910	Deferred Outflows of Resources	90,611			90,611	
Total Assets And Deferred Outflows Of Resources		\$885,030			\$885,030	

LEA : 103021603 Carlynton SD

Printed 11/25/2024 1:59:28 PM

Amounts Expressed in Whole Dollars	<u>Food Service</u> <u>(51)</u>	<u>Child Care</u> <u>Operations</u> <u>(52)</u>	<u>Other Enterprise</u> <u>(58)</u>	<u>TOTAL</u>	<u>Internal Service</u> <u>(60)</u>
Liabilities And Deferred Inflows Of Resources And Net Position					
Current Liabilities					
0400 Due to Other Funds					
0411 Due to Other Governments					
0413 Due to Component Unit					
0420 Accounts Payable	28,025			28,025	
0430 Contracts Payable					
0440 Current Portion of Long-Term Debt					
0450 Short-Term Payables					
0461 Accrued Salaries and Benefits					
0462 Payroll Deductions and Withholding					
0480 Unearned Revenues	9,052			9,052	
0490 Other Current Liabilities					
Total Current Liabilities	\$37,077			\$37,077	
Noncurrent Liabilities					
0510 Bonds Payable					
0520 Extended-Term Financing Agreements Payable					
0530 Lease and Other Right-To-Use Obligations					
0540 Accumulated Compensated Absences					
0550 Authority Lease Obligations					
0560 Other Post-Employment Benefits (OPEB)					
0570 Net Pension Liability					
0599 Other Noncurrent Liabilities	497,462			497,462	
Total Noncurrent Liabilities	\$497,462			\$497,462	
Total Liabilities	\$534,539			\$534,539	
0950 Deferred Inflows of Resources	23,449			23,449	
Net Position					
0791 Net Investment in Capital Assets	59,978			59,978	
0008 Restricted Net Position (0792 – 0798)					
0799 Unrestricted Net Position	267,064			267,064	
Total Net Position	\$327,042			\$327,042	
Total Liabilities And Deferred Inflows Of Resources And Net Position	\$885,030			\$885,030	

Amounts Expressed in Whole Dollars		<u>Food Service</u> <u>(51)</u>	<u>Child Care Operations</u> <u>(52)</u>	<u>Other Enterprise</u> <u>(58)</u>	<u>TOTAL</u>	<u>Internal Service</u> <u>(60)</u>
Operating Revenues						
6600	Food Service Revenue	64,975			64,975	
0071	Charges for Services					
0072	Other Operating Revenue					
Total Operating Revenues		\$64,975			\$64,975	
Operating Expenses						
100	Personnel Services – Salaries	167,371			167,371	
200	Personnel Services – Employee Benefits	131,979			131,979	
300	Purchased Professional and Technical Services					
400	Purchased Property Services					
500	Other Purchased Services	599,881			599,881	
600	Supplies	131,260			131,260	
740	Depreciation	25,278			25,278	
770	Amortization Expense					
810	Dues and Fees					
880	Refunds of Prior Years' Receipts					
890	Miscellaneous Expenditures					
Total Operating Expenses		\$1,055,769			\$1,055,769	
Operating Income (Loss)		(\$990,794)			(\$990,794)	
Non Operating Revenues (Expenses)						
6500	Earnings on Investments	19,080			19,080	
6830	Federal Revenue from Intermediary Sources					
6920	Contributions and Donations from Private Sources					
6930	Gains or Losses on Sale of Fixed Assets					
6991	Refunds of a Prior Year Expenditure					
7000	Revenue from State Sources	94,864			94,864	
8000	Revenue from Federal Sources	1,046,187			1,046,187	
9990	Insurance Recoveries					
820	Claims and Judgments Against the LEA					
830	Interest					
TOTAL Non Operating Revenues (Expenses)		\$1,160,131			\$1,160,131	
Income (Loss) Before Contributions And Transfers		\$169,337			\$169,337	

Amounts Expressed in Whole Dollars	<u>Food Service</u> <u>(51)</u>	<u>Child Care Operations</u> <u>(52)</u>	<u>Other Enterprise</u> <u>(58)</u>	<u>TOTAL</u>	<u>Internal Service</u> <u>(60)</u>
Contributions, Transfers, and Special and Extraordinary Items					
5200 Interfund Transfers – Out					
5300 Transfers Out to Component Units/Primary Governments					
5520 Special Items – Losses					
5530 Extraordinary Items – Losses					
9300 Interfund Transfers - IN					
9500 Capital Contributions					
9700 Transfers IN From Component Units/Primary Governments					
9920 Special Items – Gains					
9930 Extraordinary Items – Gains					
Change In Net Position	\$169,337			\$169,337	
0002 Net Position - Beginning of Fiscal Year	157,705			157,705	
0003 Accounting Changes / Residual Equity Transfers					
Net Position - End Of Year	\$327,042			\$327,042	

LEA : 103021603 Carlynton SD

Printed 11/25/2024 1:59:48 PM

Amounts Expressed in Whole Dollars		<u>Food Service</u> <u>(51)</u>	<u>Child Care Operations</u> <u>(52)</u>	<u>Other Enterprise</u> <u>(58)</u>	<u>TOTAL</u>	<u>Internal Service(60)</u>
Cash Flows From Operating Activities						
0011	Cash Receipts From Users	64,974			64,974	
0012	Cash Receipts From Assessments Made to Other Funds					
0013	Cash Receipts From Earnings on Investments					
0014	Cash Receipts From Other Operating Revenue					
0015	Cash Payments To Employees For Services	271,903			271,903	
0016	Cash Payments For Insurance Claims					
0017	Cash Payments To Suppliers For Goods and Services	649,691			649,691	
0018	Cash Payments For Other Operating Expenses					
Net Cash Provided By (Used For) Operating Activities		(\$856,620)			(\$856,620)	
Cash Flows From Non-Capital Financing Activities						
0021	Receipts From Local Sources - 6000					
0022	Receipts From State Sources - 7000	94,864			94,864	
0023	Receipts From Federal Sources -8000	954,688			954,688	
0024	Notes and Loans Received (Repaid)					
0025	Interest Paid on Notes/Loans - 5100-830					
0026	Operating Transfers In (Out)/Residual Equity Trans					
0027	Operating Transfers In (Out) Primary Government / Comp Unit					
0028	Receipts From Refund of Prior Year Expenditures - 6991					
0029	Special and Extraordinary Gains (losses)					
0030	Receipts from Insurance Recoveries -9990					
Net Cash Prov By (Used for) Non-Capital Financing Activities		\$1,049,552			\$1,049,552	
Cash Flows From Capital and Related Financing Activities						
0031	Payments For Fac Acq, Const, and Imp - 4000					
0032	Proceeds from Disposal of Capital Assets					
0033	Proceeds From Extended Term Financing - 9200					
0034	Principal Paid on Financing Agreements					
0035	Interest Paid on Financing Agreements - 5100-830					
0036	(Inc) Dec in Contributed Capital					
Net Cash Prov By (Used for) Capital and Related Financing Activities						
Cash Flows From Investing Activities						
0041	Earnings on Investments - 6500	19,080			19,080	
0042	Purchase of Inv Securities / Deposits to Inv Pools					
0043	Receipts From Investment Pool Withdrawals					
0044	Proceeds from Sale and Maturity of Inv Securities					

LEA : 103021603 Carlynton SD

Printed 11/25/2024 1:59:48 PM

0045 Loans Received (Paid)

Net Cash Prov By (Used for) Investing Activities	\$19,080	\$19,080
--	----------	----------

LEA : 103021603 Carlynton SD

Printed 11/25/2024 1:59:48 PM

	<u>Food Service</u> <u>(51)</u>	<u>Child Care Operations</u> <u>(52)</u>	<u>Other Enterprise</u> <u>(58)</u>	<u>TOTAL</u>	<u>Internal Service</u> <u>(60)</u>
Net Increase (Decrease) in Cash Flows	212,012			212,012	
0004 Cash and Cash Equivalents Beginning of Year	469,021			469,021	
Cash and Cash Equivalents at Year End	\$681,033			\$681,033	
Reconciliation of Operating Income (Loss) To Net Cash Provided by (Used For) Operating Activities					
0005 Operating Income (Loss) per REP	(990,794)			(990,794)	
Adjustments					
0051 Depreciation and Net Amortization	25,278			25,278	
0052 Provision for Uncollectible Accounts					
0053 Other Adjustments	127,687			127,687	
Effect of Changes in Assets, Liabilities, Deferred Outflows and Deferred Inflows					
0054 (Inc) Dec In Accounts Receivable (0120-0150)	(1)			(1)	
0055 Advances to Other Funds	1,201			1,201	
0056 (Inc) Dec in Inventories (0170)					
0057 (Inc) Dec in Prepaid Expenses (0180)					
0058 (Inc) Dec in Other Current or Noncurrent Assets					
0064 Deferred Outflows (0910)					
0059 Inc (Dec) in Accounts Payable (0400-0450)	(5,894)			(5,894)	
0060 Inc (Dec) in Accrued Salaries/Benefits (0461)					
0065 Inc (Dec) in Net Pension Liabilities (0570)					
0066 Inc (Dec) in Other Postemp Benefit Oblig (0560)					
0061 Inc (Dec) in Payroll Deductions/Withholding (0462)					
0062 Inc (Dec) in Unearned Revenue (0480)	(5,355)			(5,355)	
0063 Inc (Dec) in Other Current or Noncurrent Liabilities	(8,742)			(8,742)	
0067 Deferred Inflows (0950)					
Total Adjustments	\$134,174			\$134,174	
Cash Provided By (Used for) Total	(\$856,620)			(\$856,620)	

COMBINED STATEMENT OF CASH FLOWS
SCHEDULE OF NONCASH INVESTING, CAPITAL, AND FINANCING ACTIVITIES

Explanation of Transaction and Balance Sheet Effect	Amount
During the year ended June 30,2024, The School District received U.S.D.A. Donated Commodities in the food service fund.	87,896
Total	\$87,896

LEA : 103021603 Carlynton SD

Printed 11/25/2024 1:59:50 PM

Amounts Expressed in Whole Dollars		<u>Private Purpose Trust</u> <u>(71)</u>	<u>Investment Trust</u> <u>(72)</u>	<u>Pension Trust</u> <u>(73)</u>	<u>Student Activity Custodial</u> <u>(81)</u>
Assets And Deferred Outflows Of Resources					
Assets					
0100	Cash and Cash Equivalents				103,489
0110	Investments				
0130	Due From Other Funds				
0140	Due from Other Governments, Primary Government and Component Units				
0150	Other Receivables				
0170	Inventories				
0180	Prepaid Expenses (Expenditures)				
0190	Other Current Assets				
0220	Buildings and Building Improvements (Net)				
0230	Tangible Property and Intangible Right-To-Use Assets (Net)				
Total Assets					\$103,489
0910	Deferred Outflows of Resources				
Total Assets And Deferred Outflows Of Resources					\$103,489

LEA : 103021603 Carlynton SD

Printed 11/25/2024 1:59:50 PM

Amounts Expressed in Whole Dollars		<u>Other Custodial</u> <u>(89)</u>	<u>Fiduciary Component Units</u> <u>(98)</u>	<u>Total Fiduciary Funds</u>
Assets And Deferred Outflows Of Resources				
Assets				
0100	Cash and Cash Equivalents			103,489
0110	Investments			
0130	Due From Other Funds			
0140	Due from Other Governments, Primary Government and Component Units			
0150	Other Receivables			
0170	Inventories			
0180	Prepaid Expenses (Expenditures)			
0190	Other Current Assets			
0220	Buildings and Building Improvements (Net)			
0230	Tangible Property and Intangible Right-To-Use Assets (Net)			
Total Assets				\$103,489
0910	Deferred Outflows of Resources			
Total Assets And Deferred Outflows Of Resources				\$103,489

LEA : 103021603 Carlynton SD

Printed 11/25/2024 1:59:50 PM

Amounts Expressed in Whole Dollars		<u>Private Purpose Trust</u> <u>(71)</u>	<u>Investment Trust</u> <u>(72)</u>	<u>Pension Trust</u> <u>(73)</u>	<u>Student Activity Custodial</u> <u>(81)</u>
Liabilities, Deferred Inflows Of Resources And Net Position					
Liabilities					
0400	Due to Other Funds				
0410	Due to Other Governments, Primary Government and Component Units				
0420	Accounts Payable				
0430	Contracts Payable				
0450	Short-Term Payables				
0460	Payroll Accruals and Withholdings				
0480	Unearned Revenues				
0490	Other Current Liabilities				
Total Liabilities					
0950	Deferred Inflows of Resources				
Net Position					
0791	Net Investment in Capital Assets				
0009	Restricted Net Position (0792 – 0798)				103,489
0799	Unrestricted Net Position				
Total Net Position					\$103,489
Total Liabilities, Deferred Inflows Of Resources And Net Position					\$103,489

LEA : 103021603 Carlynton SD

Printed 11/25/2024 1:59:50 PM

Amounts Expressed in Whole Dollars		<u>Other Custodial</u> <u>(89)</u>	<u>Fiduciary Component Units</u> <u>(98)</u>	<u>Total Fiduciary Funds</u>
Liabilities, Deferred Inflows Of Resources And Net Position				
Liabilities				
0400	Due to Other Funds			
0410	Due to Other Governments, Primary Government and Component Units			
0420	Accounts Payable			
0430	Contracts Payable			
0450	Short-Term Payables			
0460	Payroll Accruals and Withholdings			
0480	Unearned Revenues			
0490	Other Current Liabilities			
Total Liabilities				
0950	Deferred Inflows of Resources			
Net Position				
0791	Net Investment in Capital Assets			
0009	Restricted Net Position (0792 – 0798)			103,489
0799	Unrestricted Net Position			
Total Net Position				\$103,489
Total Liabilities, Deferred Inflows Of Resources And Net Position				\$103,489

LEA : 103021603 Carlynton SD

Printed 11/25/2024 1:59:51 PM

Amounts Expressed in Whole Dollars	<u>Private Purpose Trust</u> <u>(71)</u>	<u>Investment Trust</u> <u>(72)</u>	<u>Pension Trust</u> <u>(73)</u>	<u>Student Activity</u> <u>Custodial</u> <u>(81)</u>	<u>Other Custodial</u> <u>(89)</u>	<u>Fiduciary Component</u> <u>Units</u> <u>(98)</u>
Additions						
0091 Gifts and Contributions						
0095 Net Investment Earnings				5,387		
0092 Other Additions				109,600		
Deductions						
0093 Scholarships Awarded						
0094 Other Deductions				103,808		
Change In Net Position				\$11,179		
0006 Net Position – Beginning of Fiscal Year				92,310		
0007 Net Position Held in Trust for Pension Benefits						
Net Position - End of Fiscal Year				\$103,489		

LEA : 103021603 Carlynton SD

Printed 11/25/2024 1:59:51 PM

Amounts Expressed in Whole Dollars		<u>Total Fiduciary</u>
		<u>Funds</u>
Additions		
0091	Gifts and Contributions	
0095	Net Investment Earnings	5,387
0092	Other Additions	109,600
Deductions		
0093	Scholarships Awarded	
0094	Other Deductions	103,808
Change In Net Position		\$11,179
0006	Net Position – Beginning of Fiscal Year	92,310
0007	Net Position Held in Trust for Pension Benefits	
Net Position - End of Fiscal Year		\$103,489

	Revenue Reported In Current Year	Current Year Tax Accrual	Prior Year Tax Accrual	Taxes Collected In Current Year
Revenue from Local Sources				
6111 Current Real Estate Taxes	17,572,336.15			17,572,336.15
6113 Public Utility Realty Taxes	19,161.60			19,161.60
6114 Payments in Lieu of Current Taxes - State / Local	229.42			229.42
6151 Current Act 511 Earned Income Taxes	2,410,588.93			2,410,588.93
6153 Current Act 511 Real Estate Transfer Taxes	305,425.10			305,425.10
6411 Delinquent Real Estate Taxes	889,142.58			889,142.58
6451 Delinquent Act 511 Earned Income Taxes	78,324.39			78,324.39
6500 Earnings on Investments	845,262.13			
6700 Revenues from LEA Activities	32,928.68			
6832 Federal IDEA Revenue Received as Pass Through	287,877.27			
6910 Rentals	115,159.63			
6920 Contributions and Donations from Private Sources	106,356.22			
6962 Other Services Provided Other Pennsylvania LEAs	6,086.85			
6969 All Other Services Provided Other Governments	910.00			
6991 Refunds of a Prior Year Expenditure	30,027.96			
6999 Other Revenues Not Specified Above	8,187.48			
TOTAL Revenue from Local Sources	\$22,708,004.39			\$21,275,208.17

	Revenue Reported			
	<u>In Current Year</u>			
<u>Revenue from State Sources</u>				
7111 Basic Education Funding-Formula	5,227,494.50			
7160 Tuition for Orphans Subsidy	27,971.08			
7240 Driver Education - Student	630.00			
7271 Special Education funds for School-Aged Pupils	1,188,973.62			
7311 Pupil Transportation Subsidy	513,175.35			
7312 Nonpublic and Charter School Pupil Transportation Subsidy	73,150.00			
7330 Health Services (Medical, Dental, Nurse, Act 25)	21,931.00			
7340 State Property Tax Reduction Allocation	703,550.71			
7362 School Mental Health & Safety and Security Grants	31,164.96			
7505 Ready to Learn Block Grant	189,030.00			
7810 State Share of Social Security and Medicare Taxes	468,292.31			
7820 State Share of Retirement Contributions	2,208,154.03			
TOTAL Revenue from State Sources	\$10,653,517.56			

Revenue Reported In Current Year				
Revenue from Federal Sources				
8514	Title I - Improving the Academic Achievement of the Disadvantaged	498,927.30		
8515	Title II - Preparing, Training, and Recruiting High Quality Teachers and Principals	54,269.00		
8517	Title IV - 21st Century Schools	37,783.00		
8690	Other Restricted Federal Grants-in-Aid Through the Commonwealth of PA	54,180.00		
8744	ARP ESSER - Elementary and Secondary School Emergency Relief Fund	719,548.02		
8751	ARP ESSER Learning Loss	65,918.00		
8820	Medical Assistance Reimbursement for Administrative Claiming (Quarterly) Program	2,272.00		
TOTAL Revenue from Federal Sources		\$1,432,897.32		

	Revenue Reported <u>In Current Year</u>	
<u>Other Financing Sources</u>		
9400 Sale of or Compensation for Loss of Fixed Assets	200.00	
TOTAL Other Financing Sources	\$200.00	
TOTAL FROM ALL SOURCES	\$34,794,619.27	\$21,275,208.17

LEA : 103021603 Carlynton SD

Printed 11/25/2024 1:59:58 PM

	<u>General Fund (10)</u>	<u>Student Sponsored Activity Fund (21)</u>	<u>Public Purpose Trust (27)</u>	<u>Other Compt Approved (28)</u>	<u>Athletic / Activity (29)</u>	<u>Capital Reserve (690, 1850) (31)</u>
6000 Revenue from Local Sources						
6111 Current Real Estate Taxes	17,572,336.15					
6113 Public Utility Realty Taxes	19,161.60					
6114 Payments in Lieu of Current Taxes - State / Local	229.42					
6151 Current Act 511 Earned Income Taxes	2,410,588.93					
6153 Current Act 511 Real Estate Transfer Taxes	305,425.10					
6411 Delinquent Real Estate Taxes	889,142.58					
6451 Delinquent Act 511 Earned Income Taxes	78,324.39					
6500 Earnings on Investments	845,262.13					
6700 Revenues from LEA Activities	32,928.68					
6832 Federal IDEA Revenue Received as Pass Through	287,877.27					
6910 Rentals	115,159.63					
6920 Contributions and Donations from Private Sources	106,356.22					
6962 Other Services Provided Other Pennsylvania LEAs	6,086.85					
6969 All Other Services Provided Other Governments	910.00					
6991 Refunds of a Prior Year Expenditure	30,027.96					
6999 Other Revenues Not Specified Above	8,187.48					
6000 Total Revenue from Local Sources	\$22,708,004.39					
7000 Revenue from State Sources						
7111 Basic Education Funding-Formula	5,227,494.50					
7160 Tuition for Orphans Subsidy	27,971.08					
7240 Driver Education - Student	630.00					
7271 Special Education funds for School-Aged Pupils	1,188,973.62					
7311 Pupil Transportation Subsidy	513,175.35					
7312 Nonpublic and Charter School Pupil Transportation Subsidy	73,150.00					
7330 Health Services (Medical, Dental, Nurse, Act 25)	21,931.00					
7340 State Property Tax Reduction Allocation	703,550.71					
7362 School Mental Health & Safety and Security Grants	31,164.96					
7505 Ready to Learn Block Grant	189,030.00					
7810 State Share of Social Security and Medicare Taxes	468,292.31					
7820 State Share of Retirement Contributions	2,208,154.03					
7000 Total Revenue from State Sources	\$10,653,517.56					
8000 Revenue from Federal Sources						
8514 Title I - Improving the Academic Achievement of the Disadvantaged	498,927.30					

LEA : 103021603 Carlynton SD

Printed 11/25/2024 1:59:58 PM

	<u>Capital Reserve</u> <u>(1431) (32)</u>	<u>Other Capital</u> <u>Projects Fund (39)</u>	<u>Debt Service (40)</u>	<u>Permanent (90)</u>	<u>Total</u>
6000 Revenue from Local Sources					
6111 Current Real Estate Taxes					17,572,336.15
6113 Public Utility Realty Taxes					19,161.60
6114 Payments in Lieu of Current Taxes - State / Local					229.42
6151 Current Act 511 Earned Income Taxes					2,410,588.93
6153 Current Act 511 Real Estate Transfer Taxes					305,425.10
6411 Delinquent Real Estate Taxes					889,142.58
6451 Delinquent Act 511 Earned Income Taxes					78,324.39
6500 Earnings on Investments		57,727.00			902,989.13
6700 Revenues from LEA Activities					32,928.68
6832 Federal IDEA Revenue Received as Pass Through					287,877.27
6910 Rentals					115,159.63
6920 Contributions and Donations from Private Sources					106,356.22
6962 Other Services Provided Other Pennsylvania LEAs					6,086.85
6969 All Other Services Provided Other Governments					910.00
6991 Refunds of a Prior Year Expenditure					30,027.96
6999 Other Revenues Not Specified Above					8,187.48
6000 Total Revenue from Local Sources		\$57,727.00			\$22,765,731.39
7000 Revenue from State Sources					
7111 Basic Education Funding-Formula					5,227,494.50
7160 Tuition for Orphans Subsidy					27,971.08
7240 Driver Education - Student					630.00
7271 Special Education funds for School-Aged Pupils					1,188,973.62
7311 Pupil Transportation Subsidy					513,175.35
7312 Nonpublic and Charter School Pupil Transportation Subsidy					73,150.00
7330 Health Services (Medical, Dental, Nurse, Act 25)					21,931.00
7340 State Property Tax Reduction Allocation					703,550.71
7362 School Mental Health & Safety and Security Grants					31,164.96
7505 Ready to Learn Block Grant					189,030.00
7810 State Share of Social Security and Medicare Taxes					468,292.31
7820 State Share of Retirement Contributions					2,208,154.03
7000 Total Revenue from State Sources					\$10,653,517.56
8000 Revenue from Federal Sources					
8514 Title I - Improving the Academic Achievement of the Disadvantaged					498,927.30

LEA : 103021603 Carlynton SD

Printed 11/25/2024 1:59:58 PM

	<u>General Fund (10)</u>	<u>Student Sponsored Activity Fund (21)</u>	<u>Public Purpose Trust (27)</u>	<u>Other Compt Approved (28)</u>	<u>Athletic / Activity (29)</u>	<u>Capital Reserve (690, 1850) (31)</u>
8000 Revenue from Federal Sources						
8515 Title II - Preparing, Training, and Recruiting High Quality Teachers and Principals	54,269.00					
8517 Title IV - 21st Century Schools	37,783.00					
8690 Other Restricted Federal Grants-in-Aid Through the Commonwealth of PA	54,180.00					
8744 ARP ESSER - Elementary and Secondary School Emergency Relief Fund	719,548.02					
8751 ARP ESSER Learning Loss	65,918.00					
8820 Medical Assistance Reimbursement for Administrative Claiming (Quarterly) Program	2,272.00					
8000 Total Revenue from Federal Sources	\$1,432,897.32					
9000 Other Financing Sources						
9310 General Fund Transfers						
9400 Sale of or Compensation for Loss of Fixed Assets	200.00					
9000 Total Other Financing Sources	\$200.00					
Total From All Sources	\$34,794,619.27					

LEA : 103021603 Carlynton SD

Printed 11/25/2024 1:59:58 PM

	<u>Capital Reserve</u> <u>(1431) (32)</u>	<u>Other Capital</u> <u>Projects Fund (39)</u>	<u>Debt Service (40)</u>	<u>Permanent (90)</u>	<u>Total</u>
8000 Revenue from Federal Sources					
8515 Title II - Preparing, Training, and Recruiting High Quality Teachers and Principals					54,269.00
8517 Title IV - 21st Century Schools					37,783.00
8690 Other Restricted Federal Grants-in-Aid Through the Commonwealth of PA					54,180.00
8744 ARP ESSER - Elementary and Secondary School Emergency Relief Fund					719,548.02
8751 ARP ESSER Learning Loss					65,918.00
8820 Medical Assistance Reimbursement for Administrative Claiming (Quarterly) Program					2,272.00
8000 Total Revenue from Federal Sources					\$1,432,897.32
9000 Other Financing Sources					
9310 General Fund Transfers		385,000.00			385,000.00
9400 Sale of or Compensation for Loss of Fixed Assets					200.00
9000 Total Other Financing Sources		\$385,000.00			\$385,200.00
Total From All Sources		\$442,727.00			\$35,237,346.27

LEA : 103021603 Carlynton SD

Printed 11/25/2024 2:00:03 PM

	<u>General Fund (10)</u>	<u>Student Sponsored Activity Fund (21)</u>	<u>Public Purpose Trust (27)</u>	<u>Other Compt Approved (28)</u>	<u>Athletic / Activity (29)</u>	<u>Capital Reserve (690. 1850) (31)</u>
Revenue from Local Sources	22,708,004.39					
Revenue from State Sources	10,653,517.56					
Revenue from Federal Sources	1,432,897.32					
Other Financing Sources	200.00					
Total From All Sources	\$34,794,619.27					

LEA : 103021603 Carlynton SD

Printed 11/25/2024 2:00:03 PM

	<u>Capital Reserve (1431)</u> <u>(32)</u>	<u>Other Capital Projects</u> <u>Fund (39)</u>	<u>Debt Service (40)</u>	<u>Permanent (90)</u>	<u>Total</u>
Revenue from Local Sources		57,727.00			22,765,731.39
Revenue from State Sources					10,653,517.56
Revenue from Federal Sources					1,432,897.32
Other Financing Sources		385,000.00			385,200.00
Total From All Sources		\$442,727.00			\$35,237,346.27

LEA : 103021603 Carlynton SD

Printed 11/25/2024 2:00:11 PM

General Fund (10)

1000 Instruction	Total
100 <u>Personnel Services – Salaries</u>	
100 Personnel Services – Salaries	10,104,095.47
Total Personnel Services – Salaries	\$10,104,095.47
200 <u>Personnel Services – Employee Benefits</u>	
210 Group Insurance – Contracted Provider	2,412,981.06
220 Social Security Contributions	738,455.15
230 PSERS Retirement Contributions	3,371,702.63
260 Workers' Compensation	46,867.14
Total Personnel Services – Employee Benefits	\$6,570,005.98
300 <u>Purchased Professional and Technical Services</u>	
322 Professional Educational Services – Ius	1,116,196.31
323 Professional Educational Services – Other Educational Agencies	129,640.00
329 Professional Educational Services – Other	364,194.62
330 Other Professional Services	204,403.90
Total Purchased Professional and Technical Services	\$1,814,434.83
400 <u>Purchased Property Services</u>	
440 Rentals	8,100.00
Total Purchased Property Services	\$8,100.00
500 <u>Other Purchased Services</u>	
510 Student Transportation Services	2,645.63
530 Communications	10.80
561 Tuition To Other School Districts Within the State	21,475.04
562 Tuition To Pennsylvania Charter Schools	1,582,087.19
563 Tuition To Nonpublic Schools	544,345.57
564 Tuition To Career and Technology Centers	476,202.61
567 Tuition To Approved Private Schools (APS) and PA Chartered Schools for the Deaf and Blind	446,268.68
580 Travel	2,684.15
594 IU Payment By Withholding for Institutionalized Children's Programs – Special Classes	9,463.75
Total Other Purchased Services	\$3,085,183.42
600 <u>Supplies</u>	
610 General Supplies	142,637.80
640 Books and Periodicals	3,781.24
650 Supplies & Fees – Technology Related	35,552.63
Total Supplies	\$181,971.67
700 <u>Property</u>	
752 Capital Equipment – Original and Additional	181.49
762 Capitalized Equipment - Replacement	407.64
Total Property	\$589.13
800 <u>Other Objects</u>	
810 Dues and Fees	6,531.12
Total Other Objects	\$6,531.12
Total 1000 Instruction	\$21,770,911.62

LEA : 103021603 Carlynton SD

Printed 11/25/2024 2:00:11 PM

General Fund (10)

1100 Regular Programs – Elementary / Secondary

	Elementary	Secondary	Federal	Total
100 <u>Personnel Services – Salaries</u>				
100 Personnel Services – Salaries	4,234,504.55	3,467,924.38	512,319.91	8,214,748.84
Total Personnel Services – Salaries	\$4,234,504.55	\$3,467,924.38	\$512,319.91	\$8,214,748.84
200 <u>Personnel Services – Employee Benefits</u>				
210 Group Insurance – Contracted Provider	1,181,002.81	668,375.20	14,680.01	1,864,058.02
220 Social Security Contributions	321,810.19	254,665.71	25,349.79	601,825.69
230 PSERS Retirement Contributions	1,498,185.13	1,155,376.40	95,755.63	2,749,317.16
260 Workers' Compensation	19,942.79	15,734.63	2,309.95	37,987.37
Total Personnel Services – Employee Benefits	\$3,020,940.92	\$2,094,151.94	\$138,095.38	\$5,253,188.24
300 <u>Purchased Professional and Technical Services</u>				
322 Professional Educational Services – Ius	323,740.71	177,961.87		501,702.58
323 Professional Educational Services – Other Educational Agencies		129,640.00		129,640.00
329 Professional Educational Services – Other	123,352.91	60,791.04		184,143.95
330 Other Professional Services	14,509.37	1,051.01		15,560.38
Total Purchased Professional and Technical Services	\$461,602.99	\$369,443.92		\$831,046.91
400 <u>Purchased Property Services</u>				
440 Rentals	8,100.00			8,100.00
Total Purchased Property Services	\$8,100.00			\$8,100.00
500 <u>Other Purchased Services</u>				
510 Student Transportation Services		2,000.00		2,000.00
530 Communications		10.80		10.80
561 Tuition To Other School Districts Within the State		15,429.92		15,429.92
562 Tuition To Pennsylvania Charter Schools	456,282.31	492,057.07		948,339.38
563 Tuition To Nonpublic Schools		1,125.00		1,125.00
580 Travel	1,125.32	853.51		1,978.83
Total Other Purchased Services	\$457,407.63	\$511,476.30		\$968,883.93
600 <u>Supplies</u>				
610 General Supplies	58,030.94	55,416.16	2,584.86	116,031.96
640 Books and Periodicals	684.01	1,848.23		2,532.24
650 Supplies & Fees – Technology Related	9,848.63	18,083.50	7,620.50	35,552.63
Total Supplies	\$68,563.58	\$75,347.89	\$10,205.36	\$154,116.83
700 <u>Property</u>				
752 Capital Equipment – Original and Additional	181.49			181.49
762 Capitalized Equipment - Replacement	32.98	374.66		407.64
Total Property	\$214.47	\$374.66		\$589.13
800 <u>Other Objects</u>				
810 Dues and Fees	519.12	6,012.00		6,531.12
Total Other Objects	\$519.12	\$6,012.00		\$6,531.12
Total 1100 Regular Programs – Elementary / Secondary	\$8,251,853.26	\$6,524,731.09	\$660,620.65	\$15,437,205.00

LEA : 103021603 Carlynton SD

Printed 11/25/2024 2:00:11 PM

General Fund (10)

1110 Regular Programs

	Elementary	Secondary	Federal	Total
100 <u>Personnel Services – Salaries</u>				
100 Personnel Services – Salaries	4,234,504.55	3,467,924.38	56,706.91	7,759,135.84
Total Personnel Services – Salaries	\$4,234,504.55	\$3,467,924.38	\$56,706.91	\$7,759,135.84
200 <u>Personnel Services – Employee Benefits</u>				
210 Group Insurance – Contracted Provider	1,181,002.81	668,375.20		1,849,378.01
220 Social Security Contributions	321,810.19	254,665.71	5,112.35	581,588.25
230 PSERS Retirement Contributions	1,498,185.13	1,155,376.40	20,789.92	2,674,351.45
260 Workers' Compensation	19,942.79	15,734.63	239.59	35,917.01
Total Personnel Services – Employee Benefits	\$3,020,940.92	\$2,094,151.94	\$26,141.86	\$5,141,234.72
300 <u>Purchased Professional and Technical Services</u>				
322 Professional Educational Services – Ius	323,740.71	177,961.87		501,702.58
323 Professional Educational Services – Other Educational Agencies		129,640.00		129,640.00
329 Professional Educational Services – Other	123,352.91	60,791.04		184,143.95
330 Other Professional Services	14,509.37	1,051.01		15,560.38
Total Purchased Professional and Technical Services	\$461,602.99	\$369,443.92		\$831,046.91
400 <u>Purchased Property Services</u>				
440 Rentals	8,100.00			8,100.00
Total Purchased Property Services	\$8,100.00			\$8,100.00
500 <u>Other Purchased Services</u>				
510 Student Transportation Services		2,000.00		2,000.00
530 Communications		10.80		10.80
561 Tuition To Other School Districts Within the State		15,429.92		15,429.92
562 Tuition To Pennsylvania Charter Schools	456,282.31	492,057.07		948,339.38
563 Tuition To Nonpublic Schools		1,125.00		1,125.00
580 Travel	1,125.32	853.51		1,978.83
Total Other Purchased Services	\$457,407.63	\$511,476.30		\$968,883.93
600 <u>Supplies</u>				
610 General Supplies	58,030.94	55,416.16	1,427.34	114,874.44
640 Books and Periodicals	684.01	1,848.23		2,532.24
650 Supplies & Fees – Technology Related	9,848.63	18,083.50	2,020.50	29,952.63
Total Supplies	\$68,563.58	\$75,347.89	\$3,447.84	\$147,359.31
700 <u>Property</u>				
752 Capital Equipment – Original and Additional	181.49			181.49
762 Capitalized Equipment - Replacement	32.98	374.66		407.64
Total Property	\$214.47	\$374.66		\$589.13
800 <u>Other Objects</u>				
810 Dues and Fees	519.12	6,012.00		6,531.12
Total Other Objects	\$519.12	\$6,012.00		\$6,531.12
Total 1110 Regular Programs	\$8,251,853.26	\$6,524,731.09	\$86,296.61	\$14,862,880.96

LEA : 103021603 Carlynton SD

Printed 11/25/2024 2:00:11 PM

General Fund (10)

1190 Federally-Funded Regular Programs	<u>Elementary</u>	<u>Secondary</u>	<u>Federal</u>	<u>Total</u>
100 <u>Personnel Services – Salaries</u>				
100 Personnel Services – Salaries			455,613.00	455,613.00
Total Personnel Services – Salaries			\$455,613.00	\$455,613.00
200 <u>Personnel Services – Employee Benefits</u>				
210 Group Insurance – Contracted Provider			14,680.01	14,680.01
220 Social Security Contributions			20,237.44	20,237.44
230 PSERS Retirement Contributions			74,965.71	74,965.71
260 Workers' Compensation			2,070.36	2,070.36
Total Personnel Services – Employee Benefits			\$111,953.52	\$111,953.52
600 <u>Supplies</u>				
610 General Supplies			1,157.52	1,157.52
650 Supplies & Fees – Technology Related			5,600.00	5,600.00
Total Supplies			\$6,757.52	\$6,757.52
Total 1190 Federally-Funded Regular Programs			\$574,324.04	\$574,324.04

LEA : 103021603 Carlynton SD

Printed 11/25/2024 2:00:11 PM

General Fund (10)

1200 Special Programs – Elementary / Secondary	Elementary	Secondary	Federal	Total
100 Personnel Services – Salaries				
100 Personnel Services – Salaries	841,800.20	496,849.55	268,328.94	1,606,978.69
Total Personnel Services – Salaries	\$841,800.20	\$496,849.55	\$268,328.94	\$1,606,978.69
200 Personnel Services – Employee Benefits				
210 Group Insurance – Contracted Provider	322,654.61	175,141.29	19,093.62	516,889.52
220 Social Security Contributions	67,489.05	38,870.21	10,023.75	116,383.01
230 PSERS Retirement Contributions	307,692.43	178,637.52	46,034.01	532,363.96
260 Workers' Compensation	3,769.70	2,222.88	1,564.01	7,556.59
Total Personnel Services – Employee Benefits	\$701,605.79	\$394,871.90	\$76,715.39	\$1,173,193.08
300 Purchased Professional and Technical Services				
322 Professional Educational Services – Ius	61,473.65	542,739.58		604,213.23
329 Professional Educational Services – Other		217.90	179,832.77	180,050.67
330 Other Professional Services	10,223.12		178,620.40	188,843.52
Total Purchased Professional and Technical Services	\$71,696.77	\$542,957.48	\$358,453.17	\$973,107.42
500 Other Purchased Services				
510 Student Transportation Services	316.11	329.52		645.63
561 Tuition To Other School Districts Within the State		1,800.00		1,800.00
562 Tuition To Pennsylvania Charter Schools	181,335.51	452,412.30		633,747.81
563 Tuition To Nonpublic Schools	140,772.12	386,551.45	2,625.00	529,948.57
567 Tuition To Approved Private Schools (APS) and PA Chartered Schools for the Deaf and Blind	135,481.62	310,787.06		446,268.68
580 Travel		100.00		100.00
594 IU Payment By Withholding for Institutionalized Children's Programs – Special Classes		9,463.75		9,463.75
Total Other Purchased Services	\$457,905.36	\$1,161,444.08	\$2,625.00	\$1,621,974.44
600 Supplies				
610 General Supplies	1,409.83	645.50	16,705.78	18,761.11
640 Books and Periodicals	600.00		649.00	1,249.00
Total Supplies	\$2,009.83	\$645.50	\$17,354.78	\$20,010.11
Total 1200 Special Programs – Elementary / Secondary	\$2,075,017.95	\$2,596,768.51	\$723,477.28	\$5,395,263.74

LEA : 103021603 Carlynton SD

Printed 11/25/2024 2:00:11 PM

General Fund (10)

1210 Life Skills Support

	<u>Elementary</u>	<u>Secondary</u>	<u>Federal</u>	<u>Total</u>
100 <u>Personnel Services – Salaries</u>				
100 Personnel Services – Salaries	2,337.50	105,669.58		108,007.08
Total Personnel Services – Salaries	\$2,337.50	\$105,669.58		\$108,007.08
200 <u>Personnel Services – Employee Benefits</u>				
210 Group Insurance – Contracted Provider	300.44	53,471.99		53,772.43
220 Social Security Contributions	173.08	7,842.07		8,015.15
230 PSERS Retirement Contributions	794.74	35,927.33		36,722.07
260 Workers' Compensation	11.02	498.45		509.47
Total Personnel Services – Employee Benefits	\$1,279.28	\$97,739.84		\$99,019.12
300 <u>Purchased Professional and Technical Services</u>				
329 Professional Educational Services – Other			50,205.00	50,205.00
330 Other Professional Services			125,277.50	125,277.50
Total Purchased Professional and Technical Services			\$175,482.50	\$175,482.50
600 <u>Supplies</u>				
610 General Supplies	142.36	414.51	6,085.14	6,642.01
Total Supplies	\$142.36	\$414.51	\$6,085.14	\$6,642.01
Total 1210 Life Skills Support	\$3,759.14	\$203,823.93	\$181,567.64	\$389,150.71

LEA : 103021603 Carlynton SD

Printed 11/25/2024 2:00:11 PM

General Fund (10)

1220 Sensory Support

	<u>Elementary</u>	<u>Secondary</u>	<u>Federal</u>	<u>Total</u>
100 <u>Personnel Services – Salaries</u>				
100 Personnel Services – Salaries	115,361.50	34,536.50		149,898.00
Total Personnel Services – Salaries	\$115,361.50	\$34,536.50		\$149,898.00
200 <u>Personnel Services – Employee Benefits</u>				
210 Group Insurance – Contracted Provider	35,817.40	10,722.88		46,540.28
220 Social Security Contributions	8,316.48	2,489.76		10,806.24
230 PSERS Retirement Contributions	39,222.98	11,742.43		50,965.41
260 Workers' Compensation	544.08	162.88		706.96
Total Personnel Services – Employee Benefits	\$83,900.94	\$25,117.95		\$109,018.89
300 <u>Purchased Professional and Technical Services</u>				
322 Professional Educational Services – Ius	43,746.65	98,736.14		142,482.79
329 Professional Educational Services – Other			63,672.02	63,672.02
330 Other Professional Services	2,384.19		7,942.68	10,326.87
Total Purchased Professional and Technical Services	\$46,130.84	\$98,736.14	\$71,614.70	\$216,481.68
600 <u>Supplies</u>				
610 General Supplies			5,858.89	5,858.89
Total Supplies			\$5,858.89	\$5,858.89
Total 1220 Sensory Support	\$245,393.28	\$158,390.59	\$77,473.59	\$481,257.46

LEA : 103021603 Carlynton SD

Printed 11/25/2024 2:00:11 PM

General Fund (10)

1230 Emotional Support

	Elementary	Secondary	Federal	Total
100 <u>Personnel Services – Salaries</u>				
100 Personnel Services – Salaries	172,794.67	36,465.31	85,421.76	294,681.74
Total Personnel Services – Salaries	\$172,794.67	\$36,465.31	\$85,421.76	\$294,681.74
200 <u>Personnel Services – Employee Benefits</u>				
210 Group Insurance – Contracted Provider	122,790.11	10,513.03		133,303.14
220 Social Security Contributions	15,914.23	2,706.42	2,974.00	21,594.65
230 PSERS Retirement Contributions	72,724.71	12,398.31	13,709.00	98,832.02
260 Workers' Compensation	734.94	171.98	483.00	1,389.92
Total Personnel Services – Employee Benefits	\$212,163.99	\$25,789.74	\$17,166.00	\$255,119.73
300 <u>Purchased Professional and Technical Services</u>				
322 Professional Educational Services – Ius	17,500.00	428,571.09		446,071.09
329 Professional Educational Services – Other			2,021.25	2,021.25
330 Other Professional Services	7,838.93		32,717.15	40,556.08
Total Purchased Professional and Technical Services	\$25,338.93	\$428,571.09	\$34,738.40	\$488,648.42
500 <u>Other Purchased Services</u>				
563 Tuition To Nonpublic Schools	359.10			359.10
594 IU Payment By Withholding for Institutionalized Children's Programs – Special Classes		9,463.75		9,463.75
Total Other Purchased Services	\$359.10	\$9,463.75		\$9,822.85
600 <u>Supplies</u>				
610 General Supplies		21.97	2,094.20	2,116.17
640 Books and Periodicals			649.00	649.00
Total Supplies		\$21.97	\$2,743.20	\$2,765.17
Total 1230 Emotional Support	\$410,656.69	\$500,311.86	\$140,069.36	\$1,051,037.91

LEA : 103021603 Carlynton SD

Printed 11/25/2024 2:00:11 PM

General Fund (10)

1240 Academic Support

	Elementary	Secondary	Federal	Total
100 <u>Personnel Services – Salaries</u>				
100 Personnel Services – Salaries	551,306.53	320,178.16	156,665.38	1,028,150.07
Total Personnel Services – Salaries	\$551,306.53	\$320,178.16	\$156,665.38	\$1,028,150.07
200 <u>Personnel Services – Employee Benefits</u>				
210 Group Insurance – Contracted Provider	163,746.66	100,433.39		264,180.05
220 Social Security Contributions	43,085.26	25,831.96	6,046.00	74,963.22
230 PSERS Retirement Contributions	194,950.00	118,569.45	27,864.00	341,383.45
260 Workers' Compensation	2,479.66	1,389.57	980.00	4,849.23
Total Personnel Services – Employee Benefits	\$404,261.58	\$246,224.37	\$34,890.00	\$685,375.95
300 <u>Purchased Professional and Technical Services</u>				
322 Professional Educational Services – Ius	227.00			227.00
329 Professional Educational Services – Other		217.90	63,934.50	64,152.40
330 Other Professional Services			9,480.00	9,480.00
Total Purchased Professional and Technical Services	\$227.00	\$217.90	\$73,414.50	\$73,859.40
500 <u>Other Purchased Services</u>				
510 Student Transportation Services	316.11	329.52		645.63
562 Tuition To Pennsylvania Charter Schools	181,335.51	452,412.30		633,747.81
580 Travel		100.00		100.00
Total Other Purchased Services	\$181,651.62	\$452,841.82		\$634,493.44
600 <u>Supplies</u>				
610 General Supplies	1,267.47	209.02	2,667.55	4,144.04
640 Books and Periodicals	600.00			600.00
Total Supplies	\$1,867.47	\$209.02	\$2,667.55	\$4,744.04
Total 1240 Academic Support	\$1,139,314.20	\$1,019,671.27	\$267,637.43	\$2,426,622.90

LEA : 103021603 Carlynton SD

Printed 11/25/2024 2:00:11 PM

General Fund (10)

1241 Learning Support – Public	Elementary	Secondary	Federal	Total
100 <u>Personnel Services – Salaries</u>				
100 Personnel Services – Salaries	525,864.41	294,736.28	156,665.38	977,266.07
Total Personnel Services – Salaries	\$525,864.41	\$294,736.28	\$156,665.38	\$977,266.07
200 <u>Personnel Services – Employee Benefits</u>				
210 Group Insurance – Contracted Provider	142,912.66	79,028.15		221,940.81
220 Social Security Contributions	41,284.30	24,031.00	6,046.00	71,361.30
230 PSERS Retirement Contributions	186,299.69	109,919.15	27,864.00	324,082.84
260 Workers' Compensation	2,359.64	1,269.55	980.00	4,609.19
Total Personnel Services – Employee Benefits	\$372,856.29	\$214,247.85	\$34,890.00	\$621,994.14
300 <u>Purchased Professional and Technical Services</u>				
329 Professional Educational Services – Other		217.90	63,934.50	64,152.40
330 Other Professional Services			9,480.00	9,480.00
Total Purchased Professional and Technical Services		\$217.90	\$73,414.50	\$73,632.40
500 <u>Other Purchased Services</u>				
510 Student Transportation Services		329.52		329.52
562 Tuition To Pennsylvania Charter Schools	181,335.51	452,412.30		633,747.81
Total Other Purchased Services	\$181,335.51	\$452,741.82		\$634,077.33
600 <u>Supplies</u>				
610 General Supplies	158.50	209.02	2,667.55	3,035.07
Total Supplies	\$158.50	\$209.02	\$2,667.55	\$3,035.07
Total 1241 Learning Support – Public	\$1,080,214.71	\$962,152.87	\$267,637.43	\$2,310,005.01

LEA : 103021603 Carlynton SD

Printed 11/25/2024 2:00:11 PM

General Fund (10)

1243 Gifted Support

	<u>Elementary</u>	<u>Secondary</u>	<u>Federal</u>	<u>Total</u>
100 <u>Personnel Services – Salaries</u>				
100 Personnel Services – Salaries	25,442.12	25,441.88		50,884.00
Total Personnel Services – Salaries	\$25,442.12	\$25,441.88		\$50,884.00
200 <u>Personnel Services – Employee Benefits</u>				
210 Group Insurance – Contracted Provider	20,834.00	21,405.24		42,239.24
220 Social Security Contributions	1,800.96	1,800.96		3,601.92
230 PSERS Retirement Contributions	8,650.31	8,650.30		17,300.61
260 Workers' Compensation	120.02	120.02		240.04
Total Personnel Services – Employee Benefits	\$31,405.29	\$31,976.52		\$63,381.81
300 <u>Purchased Professional and Technical Services</u>				
322 Professional Educational Services – Ius	227.00			227.00
Total Purchased Professional and Technical Services	\$227.00			\$227.00
500 <u>Other Purchased Services</u>				
510 Student Transportation Services	316.11			316.11
580 Travel		100.00		100.00
Total Other Purchased Services	\$316.11	\$100.00		\$416.11
600 <u>Supplies</u>				
610 General Supplies	1,108.97			1,108.97
640 Books and Periodicals	600.00			600.00
Total Supplies	\$1,708.97			\$1,708.97
Total 1243 Gifted Support	\$59,099.49	\$57,518.40		\$116,617.89

LEA : 103021603 Carlynton SD

Printed 11/25/2024 2:00:11 PM

General Fund (10)

1260 Physical Support

	<u>Elementary</u>	<u>Secondary</u>	<u>Federal</u>	<u>Total</u>
300 <u>Purchased Professional and Technical Services</u>				
322 Professional Educational Services – lus		15,432.35		15,432.35
Total Purchased Professional and Technical Services		\$15,432.35		\$15,432.35
Total 1260 Physical Support		\$15,432.35		\$15,432.35

LEA : 103021603 Carlynton SD

Printed 11/25/2024 2:00:11 PM

General Fund (10)

1270 Multi-Handicapped Support

	<u>Elementary</u>	<u>Secondary</u>	<u>Federal</u>	<u>Total</u>
300 <u>Purchased Professional and Technical Services</u>				
330 Other Professional Services			3,203.07	3,203.07
Total Purchased Professional and Technical Services			\$3,203.07	\$3,203.07
Total 1270 Multi-Handicapped Support			\$3,203.07	\$3,203.07

LEA : 103021603 Carlynton SD

Printed 11/25/2024 2:00:11 PM

General Fund (10)

1280 Early Intervention Support	<u>Elementary</u>	<u>Secondary</u>	<u>Federal</u>	<u>Total</u>
100 <u>Personnel Services – Salaries</u>				
100 Personnel Services – Salaries			26,241.80	26,241.80
Total Personnel Services – Salaries			\$26,241.80	\$26,241.80
200 <u>Personnel Services – Employee Benefits</u>				
210 Group Insurance – Contracted Provider			19,093.62	19,093.62
220 Social Security Contributions			1,003.75	1,003.75
230 PSERS Retirement Contributions			4,461.01	4,461.01
260 Workers' Compensation			101.01	101.01
Total Personnel Services – Employee Benefits			\$24,659.39	\$24,659.39
Total 1280 Early Intervention Support			\$50,901.19	\$50,901.19

LEA : 103021603 Carlynton SD

Printed 11/25/2024 2:00:11 PM

General Fund (10)

1290 Special Programs - Other Support	<u>Elementary</u>	<u>Secondary</u>	<u>Federal</u>	<u>Total</u>
500 <u>Other Purchased Services</u>				
561 Tuition To Other School Districts Within the State		1,800.00		1,800.00
563 Tuition To Nonpublic Schools	140,413.02	386,551.45	2,625.00	529,589.47
567 Tuition To Approved Private Schools (APS) and PA Chartered Schools for the Deaf and Blind	135,481.62	310,787.06		446,268.68
Total Other Purchased Services	\$275,894.64	\$699,138.51	\$2,625.00	\$977,658.15
Total 1290 Special Programs - Other Support	\$275,894.64	\$699,138.51	\$2,625.00	\$977,658.15

LEA : 103021603 Carlynton SD

Printed 11/25/2024 2:00:11 PM

General Fund (10)

1300 Vocational Education

	<u>Elementary</u>	<u>Secondary</u>	<u>Federal</u>	<u>Total</u>
100 <u>Personnel Services – Salaries</u>				
100 Personnel Services – Salaries		259,650.75		259,650.75
Total Personnel Services – Salaries		\$259,650.75		\$259,650.75
200 <u>Personnel Services – Employee Benefits</u>				
210 Group Insurance – Contracted Provider		32,033.52		32,033.52
220 Social Security Contributions		19,126.71		19,126.71
230 PSERS Retirement Contributions		85,032.67		85,032.67
260 Workers' Compensation		1,224.71		1,224.71
Total Personnel Services – Employee Benefits		\$137,417.61		\$137,417.61
500 <u>Other Purchased Services</u>				
564 Tuition To Career and Technology Centers		476,202.61		476,202.61
580 Travel		467.69		467.69
Total Other Purchased Services		\$476,670.30		\$476,670.30
600 <u>Supplies</u>				
610 General Supplies		2,824.08		2,824.08
Total Supplies		\$2,824.08		\$2,824.08
Total 1300 Vocational Education		\$876,562.74		\$876,562.74

LEA : 103021603 Carlynton SD

Printed 11/25/2024 2:00:11 PM

General Fund (10)

1400 Other Instructional Programs – Elementary / Secondary	<u>Elementary</u>	<u>Secondary</u>	<u>Federal</u>	<u>Total</u>
100 <u>Personnel Services – Salaries</u>				
100 Personnel Services – Salaries	7,167.19			7,167.19
Total Personnel Services – Salaries	\$7,167.19			\$7,167.19
200 <u>Personnel Services – Employee Benefits</u>				
220 Social Security Contributions	524.74			524.74
230 PSERS Retirement Contributions	2,436.84			2,436.84
260 Workers’ Compensation	33.80			33.80
Total Personnel Services – Employee Benefits	\$2,995.38			\$2,995.38
500 <u>Other Purchased Services</u>				
561 Tuition To Other School Districts Within the State		4,245.12		4,245.12
563 Tuition To Nonpublic Schools		13,272.00		13,272.00
580 Travel	120.53	17.10		137.63
Total Other Purchased Services	\$120.53	\$17,534.22		\$17,654.75
Total 1400 Other Instructional Programs – Elementary / Secondary	\$10,283.10	\$17,534.22		\$27,817.32

LEA : 103021603 Carlynton SD

Printed 11/25/2024 2:00:11 PM

General Fund (10)

1430 Homebound Instruction	<u>Elementary</u>	<u>Secondary</u>	<u>Federal</u>	<u>Total</u>
100 <u>Personnel Services – Salaries</u>				
100 Personnel Services – Salaries	7,167.19			7,167.19
Total Personnel Services – Salaries	\$7,167.19			\$7,167.19
200 <u>Personnel Services – Employee Benefits</u>				
220 Social Security Contributions	524.74			524.74
230 PSERS Retirement Contributions	2,436.84			2,436.84
260 Workers’ Compensation	33.80			33.80
Total Personnel Services – Employee Benefits	\$2,995.38			\$2,995.38
500 <u>Other Purchased Services</u>				
580 Travel	120.53	17.10		137.63
Total Other Purchased Services	\$120.53	\$17.10		\$137.63
Total 1430 Homebound Instruction	\$10,283.10	\$17.10		\$10,300.20

LEA : 103021603 Carlynton SD

Printed 11/25/2024 2:00:11 PM

General Fund (10)

1440 Alternative Regular Education Programs

<u>Elementary</u>	<u>Secondary</u>	<u>Federal</u>	<u>Total</u>
-------------------	------------------	----------------	--------------

500 Other Purchased Services

561 Tuition To Other School Districts Within the State	4,245.12		4,245.12
--	----------	--	----------

563 Tuition To Nonpublic Schools	13,272.00		13,272.00
----------------------------------	-----------	--	-----------

Total Other Purchased Services	\$17,517.12		\$17,517.12
Total 1440 Alternative Regular Education Programs	\$17,517.12		\$17,517.12

LEA : 103021603 Carlynton SD

Printed 11/25/2024 2:00:11 PM

General Fund (10)

1441 Adjudicated / Court-Placed Programs

<u>Elementary</u>	<u>Secondary</u>	<u>Federal</u>	<u>Total</u>
-------------------	------------------	----------------	--------------

500 Other Purchased Services

561 Tuition To Other School Districts Within the State	4,245.12		4,245.12
--	----------	--	----------

Total Other Purchased Services	\$4,245.12		\$4,245.12
---------------------------------------	-------------------	--	-------------------

Total 1441 Adjudicated / Court-Placed Programs	\$4,245.12		\$4,245.12
---	-------------------	--	-------------------

LEA : 103021603 Carlynton SD

Printed 11/25/2024 2:00:11 PM

General Fund (10)

1442 Alternative Education Programs	<u>Elementary</u>	<u>Secondary</u>	<u>Federal</u>	<u>Total</u>
500 <u>Other Purchased Services</u>				
563 Tuition To Nonpublic Schools		13,272.00		13,272.00
Total Other Purchased Services		\$13,272.00		\$13,272.00
Total 1442 Alternative Education Programs		\$13,272.00		\$13,272.00

LEA : 103021603 Carlynton SD

Printed 11/25/2024 2:00:11 PM

General Fund (10)

1500 Nonpublic School Programs	<u>Elementary</u>	<u>Secondary</u>	<u>Federal</u>	<u>Total</u>
100 <u>Personnel Services – Salaries</u>				
100 Personnel Services – Salaries			15,550.00	15,550.00
Total Personnel Services – Salaries			\$15,550.00	\$15,550.00
200 <u>Personnel Services – Employee Benefits</u>				
220 Social Security Contributions			595.00	595.00
230 PSERS Retirement Contributions			2,552.00	2,552.00
260 Workers’ Compensation			64.67	64.67
Total Personnel Services – Employee Benefits			\$3,211.67	\$3,211.67
300 <u>Purchased Professional and Technical Services</u>				
322 Professional Educational Services – Ius			10,280.50	10,280.50
Total Purchased Professional and Technical Services			\$10,280.50	\$10,280.50
600 <u>Supplies</u>				
610 General Supplies			5,020.65	5,020.65
Total Supplies			\$5,020.65	\$5,020.65
Total 1500 Nonpublic School Programs			\$34,062.82	\$34,062.82

LEA : 103021603 Carlynton SD

Printed 11/25/2024 2:00:25 PM

General Fund (10)

2000 Support Services

Total

100	<u>Personnel Services – Salaries</u>	
100	Personnel Services – Salaries	3,262,683.02
Total Personnel Services – Salaries		\$3,262,683.02
200	<u>Personnel Services – Employee Benefits</u>	
210	Group Insurance – Contracted Provider	993,294.06
220	Social Security Contributions	240,726.13
230	PSERS Retirement Contributions	1,055,475.97
240	Tuition Reimbursement	29,616.35
260	Workers' Compensation	15,409.98
299	All Other Employee Benefits	2,855.70
Total Personnel Services – Employee Benefits		\$2,337,378.19
300	<u>Purchased Professional and Technical Services</u>	
322	Professional Educational Services – Ius	7,500.00
323	Professional Educational Services – Other Educational Agencies	500.00
329	Professional Educational Services – Other	406,005.38
330	Other Professional Services	480,553.95
340	Technical Services	7,446.47
350	Security / Safety Services	24,478.25
360	Employee Training and Development Services	275.00
Total Purchased Professional and Technical Services		\$926,759.05
400	<u>Purchased Property Services</u>	
410	Cleaning Services	54,722.23
420	Utility Services	82,767.65
430	Repairs and Maintenance Services	451,489.07
440	Rentals	6,688.05
460	Extermination Services	3,542.00
Total Purchased Property Services		\$599,209.00
500	<u>Other Purchased Services</u>	
510	Student Transportation Services	94.94
513	Contracted Carriers	2,419,494.65
515	Public Carriers	1,758.00
516	Student Transportation Services From the IU	594.75
520	Insurance – General	4,924.00
521	Fire Insurance	49,442.00
522	Automotive Liability Insurance	3,205.00
523	General Property and Liability Insurance	31,439.00
529	Other Insurance	12,946.88
530	Communications	52,152.50
549	Other Advertising/Public Relations	22,843.19
550	Printing and Binding	83.86
580	Travel	30,471.45
595	IU Payments By Withholding	20,576.01
Total Other Purchased Services		\$2,650,026.23

LEA : 103021603 Carlynton SD

Printed 11/25/2024 2:00:25 PM

General Fund (10)	
2000 Support Services	<u>Total</u>
600 <u>Supplies</u>	
610 General Supplies	321,827.59
620 Energy	340,207.08
630 Food	6,296.70
640 Books and Periodicals	31,710.63
650 Supplies & Fees – Technology Related	226,856.47
Total Supplies	\$926,898.47
700 <u>Property</u>	
762 Capitalized Equipment - Replacement	114,494.46
Total Property	\$114,494.46
800 <u>Other Objects</u>	
810 Dues and Fees	40,315.17
Total Other Objects	\$40,315.17
Total 2000 Support Services	\$10,857,763.59

LEA : 103021603 Carlynton SD

Printed 11/25/2024 2:00:25 PM

General Fund (10)

2100 Support Services – Students	Elementary	Secondary	Federal	Total
100 <u>Personnel Services – Salaries</u>				
100 Personnel Services – Salaries	185,991.69	466,033.61	43,636.08	735,924.44
Total Personnel Services – Salaries	\$185,991.69	\$466,033.61	\$43,636.08	\$735,924.44
200 <u>Personnel Services – Employee Benefits</u>				
210 Group Insurance – Contracted Provider	48,425.69	90,220.88	22,142.88	188,487.55
220 Social Security Contributions	14,893.73	34,260.19	1,669.08	53,699.42
230 PSERS Retirement Contributions	70,561.42	158,009.24	7,418.12	249,678.33
260 Workers' Compensation	916.60	2,196.31	167.98	3,470.72
Total Personnel Services – Employee Benefits	\$134,797.44	\$284,686.62	\$31,398.06	\$495,336.02
300 <u>Purchased Professional and Technical Services</u>				
322 Professional Educational Services – Ius			7,500.00	7,500.00
329 Professional Educational Services – Other			254,635.00	254,635.00
330 Other Professional Services		31,802.14		31,802.14
Total Purchased Professional and Technical Services		\$31,802.14	\$262,135.00	\$293,937.14
500 <u>Other Purchased Services</u>				
510 Student Transportation Services		94.94		94.94
580 Travel	1,506.27	975.77		3,258.01
Total Other Purchased Services	\$1,506.27	\$1,070.71		\$3,352.95
600 <u>Supplies</u>				
610 General Supplies	269.88	4,148.30	3,753.52	8,171.70
650 Supplies & Fees – Technology Related	2,021.04	672.24		2,693.28
Total Supplies	\$2,290.92	\$4,820.54	\$3,753.52	\$10,864.98
700 <u>Property</u>				
762 Capitalized Equipment - Replacement			12,865.00	12,865.00
Total Property			\$12,865.00	\$12,865.00
800 <u>Other Objects</u>				
810 Dues and Fees	694.00	1,222.25		2,081.25
Total Other Objects	\$694.00	\$1,222.25		\$2,081.25
Total 2100 Support Services – Students	\$325,280.32	\$789,635.87	\$353,787.66	\$1,554,361.78

LEA : 103021603 Carlynton SD

Printed 11/25/2024 2:00:25 PM

General Fund (10)

2110 Supervision of Student Services	Elementary	Secondary	Federal	Total
100 <u>Personnel Services – Salaries</u>				
100 Personnel Services – Salaries	20,920.09	26,552.84		47,472.93
Total Personnel Services – Salaries	\$20,920.09	\$26,552.84		\$47,472.93
200 <u>Personnel Services – Employee Benefits</u>				
210 Group Insurance – Contracted Provider	2,687.50	3,309.53		5,997.03
220 Social Security Contributions	1,562.31	1,923.92		3,486.23
230 PSERS Retirement Contributions	7,233.27	8,907.45		16,140.72
260 Workers' Compensation	100.30	123.50		223.80
Total Personnel Services – Employee Benefits	\$11,583.38	\$14,264.40		\$25,847.78
300 <u>Purchased Professional and Technical Services</u>				
322 Professional Educational Services – Ius			7,500.00	7,500.00
329 Professional Educational Services – Other			9,182.00	9,182.00
Total Purchased Professional and Technical Services			\$16,682.00	\$16,682.00
500 <u>Other Purchased Services</u>				
580 Travel	1,320.82	593.44		1,914.26
Total Other Purchased Services	\$1,320.82	\$593.44		\$1,914.26
600 <u>Supplies</u>				
610 General Supplies	269.88	89.77		359.65
650 Supplies & Fees – Technology Related	2,021.04	672.24		2,693.28
Total Supplies	\$2,290.92	\$762.01		\$3,052.93
800 <u>Other Objects</u>				
810 Dues and Fees		75.00		75.00
Total Other Objects		\$75.00		\$75.00
Total 2110 Supervision of Student Services	\$36,115.21	\$42,247.69	\$16,682.00	\$95,044.90

LEA : 103021603 Carlynton SD

Printed 11/25/2024 2:00:25 PM

General Fund (10)

2111 Supervision of Student Services – Head of Component	<u>Elementary</u>	<u>Secondary</u>	<u>Federal</u>	<u>Total</u>
100 <u>Personnel Services – Salaries</u>				
100 Personnel Services – Salaries	20,920.09	26,552.84		47,472.93
Total Personnel Services – Salaries	\$20,920.09	\$26,552.84		\$47,472.93
200 <u>Personnel Services – Employee Benefits</u>				
210 Group Insurance – Contracted Provider	2,687.50	3,309.53		5,997.03
220 Social Security Contributions	1,562.31	1,923.92		3,486.23
230 PSERS Retirement Contributions	7,233.27	8,907.45		16,140.72
260 Workers' Compensation	100.30	123.50		223.80
Total Personnel Services – Employee Benefits	\$11,583.38	\$14,264.40		\$25,847.78
300 <u>Purchased Professional and Technical Services</u>				
322 Professional Educational Services – Ius			7,500.00	7,500.00
329 Professional Educational Services – Other			9,182.00	9,182.00
Total Purchased Professional and Technical Services			\$16,682.00	\$16,682.00
500 <u>Other Purchased Services</u>				
580 Travel	1,320.82	593.44		1,914.26
Total Other Purchased Services	\$1,320.82	\$593.44		\$1,914.26
600 <u>Supplies</u>				
610 General Supplies	269.88	89.77		359.65
650 Supplies & Fees – Technology Related	2,021.04	672.24		2,693.28
Total Supplies	\$2,290.92	\$762.01		\$3,052.93
800 <u>Other Objects</u>				
810 Dues and Fees		75.00		75.00
Total Other Objects		\$75.00		\$75.00
Total 2111 Supervision of Student Services – Head of Component	\$36,115.21	\$42,247.69	\$16,682.00	\$95,044.90

LEA : 103021603 Carlynton SD

Printed 11/25/2024 2:00:25 PM

General Fund (10)

2120 Guidance Services	Elementary	Secondary	Federal	Total
100 <u>Personnel Services – Salaries</u>				
100 Personnel Services – Salaries	33,740.56	389,350.68	43,636.08	466,727.32
Total Personnel Services – Salaries	\$33,740.56	\$389,350.68	\$43,636.08	\$466,727.32
200 <u>Personnel Services – Employee Benefits</u>				
210 Group Insurance – Contracted Provider	23,387.39	74,476.17	22,142.88	120,006.44
220 Social Security Contributions	3,785.98	28,708.84	1,669.08	34,163.90
230 PSERS Retirement Contributions	18,890.01	132,379.12	7,418.12	158,687.25
260 Workers' Compensation	196.91	1,836.41	167.98	2,201.30
Total Personnel Services – Employee Benefits	\$46,260.29	\$237,400.54	\$31,398.06	\$315,058.89
300 <u>Purchased Professional and Technical Services</u>				
330 Other Professional Services		458.20		458.20
Total Purchased Professional and Technical Services		\$458.20		\$458.20
500 <u>Other Purchased Services</u>				
510 Student Transportation Services		94.94		94.94
580 Travel		375.15		375.15
Total Other Purchased Services		\$470.09		\$470.09
600 <u>Supplies</u>				
610 General Supplies		2,423.51		2,423.51
Total Supplies		\$2,423.51		\$2,423.51
800 <u>Other Objects</u>				
810 Dues and Fees		35.00		35.00
Total Other Objects		\$35.00		\$35.00
Total 2120 Guidance Services	\$80,000.85	\$630,138.02	\$75,034.14	\$785,173.01

LEA : 103021603 Carlynton SD

Printed 11/25/2024 2:00:25 PM

General Fund (10)

2140 Psychological Services	Elementary	Secondary	Federal	Total
100 <u>Personnel Services – Salaries</u>				
100 Personnel Services – Salaries	131,331.04	50,130.09		181,461.13
Total Personnel Services – Salaries	\$131,331.04	\$50,130.09		\$181,461.13
200 <u>Personnel Services – Employee Benefits</u>				
210 Group Insurance – Contracted Provider	22,350.80	12,435.18		34,785.98
220 Social Security Contributions	9,545.44	3,627.43		13,172.87
230 PSERS Retirement Contributions	44,438.14	16,722.67		61,160.81
260 Workers' Compensation	619.39	236.40		855.79
Total Personnel Services – Employee Benefits	\$76,953.77	\$33,021.68		\$109,975.45
300 <u>Purchased Professional and Technical Services</u>				
329 Professional Educational Services – Other			3,123.00	3,123.00
330 Other Professional Services		31,343.94		31,343.94
Total Purchased Professional and Technical Services		\$31,343.94	\$3,123.00	\$34,466.94
500 <u>Other Purchased Services</u>				
580 Travel	185.45	7.18		192.63
Total Other Purchased Services	\$185.45	\$7.18		\$192.63
600 <u>Supplies</u>				
610 General Supplies		1,635.02	3,677.52	5,312.54
Total Supplies		\$1,635.02	\$3,677.52	\$5,312.54
700 <u>Property</u>				
762 Capitalized Equipment - Replacement			12,865.00	12,865.00
Total Property			\$12,865.00	\$12,865.00
800 <u>Other Objects</u>				
810 Dues and Fees	694.00	1,112.25		1,806.25
Total Other Objects	\$694.00	\$1,112.25		\$1,806.25
Total 2140 Psychological Services	\$209,164.26	\$117,250.16	\$19,665.52	\$346,079.94

LEA : 103021603 Carlynton SD

Printed 11/25/2024 2:00:25 PM

General Fund (10)

2160 Social Work Services

	<u>Elementary</u>	<u>Secondary</u>	<u>Federal</u>	<u>Total</u>
300 <u>Purchased Professional and Technical Services</u>				
329 Professional Educational Services – Other			242,330.00	242,330.00
Total Purchased Professional and Technical Services			\$242,330.00	\$242,330.00
Total 2160 Social Work Services			\$242,330.00	\$242,330.00

LEA : 103021603 Carlynton SD

Printed 11/25/2024 2:00:25 PM

General Fund (10)

2170 Student Accounting Services	<u>Elementary</u>	<u>Secondary</u>	<u>Federal</u>	<u>Total</u>
100 <u>Personnel Services – Salaries</u>				
100 Personnel Services – Salaries				40,263.06
Total Personnel Services – Salaries				\$40,263.06
200 <u>Personnel Services – Employee Benefits</u>				
210 Group Insurance – Contracted Provider				27,698.10
220 Social Security Contributions				2,876.42
230 PSERS Retirement Contributions				13,689.55
260 Workers' Compensation				189.83
Total Personnel Services – Employee Benefits				\$44,453.90
500 <u>Other Purchased Services</u>				
580 Travel				775.97
Total Other Purchased Services				\$775.97
800 <u>Other Objects</u>				
810 Dues and Fees				165.00
Total Other Objects				\$165.00
Total 2170 Student Accounting Services				\$85,657.93

LEA : 103021603 Carlynton SD

Printed 11/25/2024 2:00:25 PM

General Fund (10)

2190 Other Student Services	<u>Elementary</u>	<u>Secondary</u>	<u>Federal</u>	<u>Total</u>
600 <u>Supplies</u>				
610 General Supplies			76.00	76.00
Total Supplies			\$76.00	\$76.00
Total 2190 Other Student Services			\$76.00	\$76.00

LEA : 103021603 Carlynton SD

Printed 11/25/2024 2:00:25 PM

General Fund (10)

2200 Support Services – Instructional Staff	Elementary	Secondary	Federal	Total
100 <u>Personnel Services – Salaries</u>				
100 Personnel Services – Salaries	268,484.16	130,532.15		399,016.31
Total Personnel Services – Salaries	\$268,484.16	\$130,532.15		\$399,016.31
200 <u>Personnel Services – Employee Benefits</u>				
210 Group Insurance – Contracted Provider	85,936.41	72,040.19		157,976.60
220 Social Security Contributions	19,598.98	9,629.83		29,228.81
230 PSERS Retirement Contributions	90,172.28	43,343.34		133,515.62
240 Tuition Reimbursement	26,047.35	2,769.00		28,816.35
260 Workers' Compensation	1,266.39	615.62		1,882.01
Total Personnel Services – Employee Benefits	\$223,021.41	\$128,397.98		\$351,419.39
300 <u>Purchased Professional and Technical Services</u>				
323 Professional Educational Services – Other Educational Agencies	500.00			500.00
329 Professional Educational Services – Other	4,442.00			4,442.00
330 Other Professional Services	615.13	184.15		799.28
360 Employee Training and Development Services			275.00	275.00
Total Purchased Professional and Technical Services	\$5,557.13	\$184.15	\$275.00	\$6,016.28
500 <u>Other Purchased Services</u>				
530 Communications	317.84	95.16		413.00
580 Travel	1,374.77	1,597.74		2,972.51
Total Other Purchased Services	\$1,692.61	\$1,692.90		\$3,385.51
600 <u>Supplies</u>				
610 General Supplies	33,461.28	29,001.12		62,462.40
640 Books and Periodicals	4,253.62		26,874.12	31,127.74
650 Supplies & Fees – Technology Related	148,319.27	43,280.64	2,599.67	194,199.58
Total Supplies	\$186,034.17	\$72,281.76	\$29,473.79	\$287,789.72
700 <u>Property</u>				
762 Capitalized Equipment - Replacement		82,921.46		82,921.46
Total Property		\$82,921.46		\$82,921.46
800 <u>Other Objects</u>				
810 Dues and Fees	214.41	133.92		348.33
Total Other Objects	\$214.41	\$133.92		\$348.33
Total 2200 Support Services – Instructional Staff	\$685,003.89	\$416,144.32	\$29,748.79	\$1,130,897.00

LEA : 103021603 Carlynton SD

Printed 11/25/2024 2:00:25 PM

General Fund (10)

2220 Technology Support Services	Elementary	Secondary	Federal	Total
300 <u>Purchased Professional and Technical Services</u>				
330 Other Professional Services	615.13	184.15		799.28
Total Purchased Professional and Technical Services	\$615.13	\$184.15		\$799.28
500 <u>Other Purchased Services</u>				
530 Communications	317.84	95.16		413.00
Total Other Purchased Services	\$317.84	\$95.16		\$413.00
600 <u>Supplies</u>				
610 General Supplies	25,924.75	27,375.25		53,300.00
650 Supplies & Fees – Technology Related	145,514.37	43,280.64	2,599.67	191,394.68
Total Supplies	\$171,439.12	\$70,655.89	\$2,599.67	\$244,694.68
700 <u>Property</u>				
762 Capitalized Equipment - Replacement		82,921.46		82,921.46
Total Property		\$82,921.46		\$82,921.46
Total 2220 Technology Support Services	\$172,372.09	\$153,856.66	\$2,599.67	\$328,828.42

General Fund (10)

2240 Computer-Assisted Instruction Support Services	<u>Elementary</u>	<u>Secondary</u>	<u>Federal</u>	<u>Total</u>
100 <u>Personnel Services – Salaries</u>				
100 Personnel Services – Salaries	70,228.26	64,826.10		135,054.36
Total Personnel Services – Salaries	\$70,228.26	\$64,826.10		\$135,054.36
200 <u>Personnel Services – Employee Benefits</u>				
210 Group Insurance – Contracted Provider	18,325.24	38,947.10		57,272.34
220 Social Security Contributions	5,225.79	4,823.80		10,049.59
230 PSERS Retirement Contributions	22,765.24	21,014.07		43,779.31
260 Workers' Compensation	331.29	305.81		637.10
Total Personnel Services – Employee Benefits	\$46,647.56	\$65,090.78		\$111,738.34
600 <u>Supplies</u>				
610 General Supplies		62.90		62.90
Total Supplies		\$62.90		\$62.90
800 <u>Other Objects</u>				
810 Dues and Fees	102.61	30.72		133.33
Total Other Objects	\$102.61	\$30.72		\$133.33
Total 2240 Computer-Assisted Instruction Support Services	\$116,978.43	\$130,010.50		\$246,988.93

LEA : 103021603 Carlynton SD

Printed 11/25/2024 2:00:25 PM

General Fund (10)

2250 School Library Services	Elementary	Secondary	Federal	Total
100 Personnel Services – Salaries				
100 Personnel Services – Salaries	96,598.00			96,598.00
Total Personnel Services – Salaries	\$96,598.00			\$96,598.00
200 Personnel Services – Employee Benefits				
210 Group Insurance – Contracted Provider	23,119.92			23,119.92
220 Social Security Contributions	7,106.88			7,106.88
230 PSERS Retirement Contributions	32,843.26			32,843.26
260 Workers' Compensation	455.62			455.62
Total Personnel Services – Employee Benefits	\$63,525.68			\$63,525.68
600 Supplies				
610 General Supplies	6,215.50			6,215.50
640 Books and Periodicals	4,253.62			4,253.62
650 Supplies & Fees – Technology Related	2,804.90			2,804.90
Total Supplies	\$13,274.02			\$13,274.02
Total 2250 School Library Services	\$173,397.70			\$173,397.70

LEA : 103021603 Carlynton SD

Printed 11/25/2024 2:00:25 PM

General Fund (10)

2260 Instruction and Curriculum Development Services	<u>Elementary</u>	<u>Secondary</u>	<u>Federal</u>	<u>Total</u>
100 <u>Personnel Services – Salaries</u>				
100 Personnel Services – Salaries	101,657.90	65,706.05		167,363.95
Total Personnel Services – Salaries	\$101,657.90	\$65,706.05		\$167,363.95
200 <u>Personnel Services – Employee Benefits</u>				
210 Group Insurance – Contracted Provider	44,491.25	33,093.09		77,584.34
220 Social Security Contributions	7,266.31	4,806.03		12,072.34
230 PSERS Retirement Contributions	34,563.78	22,329.27		56,893.05
260 Workers' Compensation	479.48	309.81		789.29
Total Personnel Services – Employee Benefits	\$86,800.82	\$60,538.20		\$147,339.02
300 <u>Purchased Professional and Technical Services</u>				
323 Professional Educational Services – Other Educational Agencies	500.00			500.00
Total Purchased Professional and Technical Services	\$500.00			\$500.00
500 <u>Other Purchased Services</u>				
580 Travel	1,374.77	1,597.74		2,972.51
Total Other Purchased Services	\$1,374.77	\$1,597.74		\$2,972.51
600 <u>Supplies</u>				
610 General Supplies	1,042.83	1,562.97		2,605.80
640 Books and Periodicals			26,874.12	26,874.12
Total Supplies	\$1,042.83	\$1,562.97	\$26,874.12	\$29,479.92
800 <u>Other Objects</u>				
810 Dues and Fees	111.80	103.20		215.00
Total Other Objects	\$111.80	\$103.20		\$215.00
Total 2260 Instruction and Curriculum Development Services	\$191,488.12	\$129,508.16	\$26,874.12	\$347,870.40

LEA : 103021603 Carlynton SD

Printed 11/25/2024 2:00:25 PM

General Fund (10)

2270 Instructional Staff Professional Development Services	<u>Elementary</u>	<u>Secondary</u>	<u>Federal</u>	<u>Total</u>
200 <u>Personnel Services – Employee Benefits</u>				
240 Tuition Reimbursement	26,047.35	2,769.00		28,816.35
Total Personnel Services – Employee Benefits	\$26,047.35	\$2,769.00		\$28,816.35
300 <u>Purchased Professional and Technical Services</u>				
329 Professional Educational Services – Other	4,442.00			4,442.00
360 Employee Training and Development Services			275.00	275.00
Total Purchased Professional and Technical Services	\$4,442.00		\$275.00	\$4,717.00
600 <u>Supplies</u>				
610 General Supplies	278.20			278.20
Total Supplies	\$278.20			\$278.20
Total 2270 Instructional Staff Professional Development Services	\$30,767.55	\$2,769.00	\$275.00	\$33,811.55

LEA : 103021603 Carlynton SD

Printed 11/25/2024 2:00:25 PM

General Fund (10)

2300 Support Services – Administration	Elementary	Secondary	Federal	Total
100 <u>Personnel Services – Salaries</u>				
100 Personnel Services – Salaries	281,072.60	256,310.68		863,981.15
Total Personnel Services – Salaries	\$281,072.60	\$256,310.68		\$863,981.15
200 <u>Personnel Services – Employee Benefits</u>				
210 Group Insurance – Contracted Provider	119,139.94	70,644.85		262,509.48
220 Social Security Contributions	20,514.04	19,036.28		63,842.32
230 PSERS Retirement Contributions	94,348.58	66,122.41		258,020.76
260 Workers' Compensation	1,325.57	1,208.97		4,074.79
Total Personnel Services – Employee Benefits	\$235,328.13	\$157,012.51		\$588,447.35
300 <u>Purchased Professional and Technical Services</u>				
330 Other Professional Services				297,862.42
Total Purchased Professional and Technical Services				\$297,862.42
400 <u>Purchased Property Services</u>				
440 Rentals				1,292.05
Total Purchased Property Services				\$1,292.05
500 <u>Other Purchased Services</u>				
520 Insurance – General				4,724.00
549 Other Advertising/Public Relations				22,843.19
550 Printing and Binding				83.86
580 Travel	9,294.84	328.97		16,532.40
Total Other Purchased Services	\$9,294.84	\$328.97		\$44,183.45
600 <u>Supplies</u>				
610 General Supplies	10,459.54	4,777.05		25,896.96
630 Food	115.38	18.26		6,296.70
640 Books and Periodicals				469.89
650 Supplies & Fees – Technology Related				3,075.92
Total Supplies	\$10,574.92	\$4,795.31		\$35,739.47
800 <u>Other Objects</u>				
810 Dues and Fees	1,000.00	255.73		24,702.11
Total Other Objects	\$1,000.00	\$255.73		\$24,702.11
Total 2300 Support Services – Administration	\$537,270.49	\$418,703.20		\$1,856,208.00

LEA : 103021603 Carlynton SD

Printed 11/25/2024 2:00:25 PM

General Fund (10)

2310 Board Services

	<u>Elementary</u>	<u>Secondary</u>	<u>Federal</u>	<u>Total</u>
100 <u>Personnel Services – Salaries</u>				
100 Personnel Services – Salaries				14,193.16
Total Personnel Services – Salaries				\$14,193.16
200 <u>Personnel Services – Employee Benefits</u>				
210 Group Insurance – Contracted Provider				4,160.23
220 Social Security Contributions				1,044.52
230 PSERS Retirement Contributions				4,825.72
260 Workers' Compensation				66.89
Total Personnel Services – Employee Benefits				\$10,097.36
300 <u>Purchased Professional and Technical Services</u>				
330 Other Professional Services				150.00
Total Purchased Professional and Technical Services				\$150.00
500 <u>Other Purchased Services</u>				
520 Insurance – General				428.00
549 Other Advertising/Public Relations				6,439.28
550 Printing and Binding				83.86
580 Travel				132.48
Total Other Purchased Services				\$7,083.62
600 <u>Supplies</u>				
610 General Supplies				2,909.11
650 Supplies & Fees – Technology Related				2,991.12
Total Supplies				\$5,900.23
800 <u>Other Objects</u>				
810 Dues and Fees				13,407.57
Total Other Objects				\$13,407.57
Total 2310 Board Services				\$50,831.94

LEA : 103021603 Carlynton SD

Printed 11/25/2024 2:00:25 PM

General Fund (10)

2330 Tax Assessment and Collection Services	<u>Elementary</u>	<u>Secondary</u>	<u>Federal</u>	<u>Total</u>
100 <u>Personnel Services – Salaries</u>				
100 Personnel Services – Salaries				480.00
Total Personnel Services – Salaries				\$480.00
200 <u>Personnel Services – Employee Benefits</u>				
220 Social Security Contributions				36.72
260 Workers’ Compensation				2.19
Total Personnel Services – Employee Benefits				\$38.91
300 <u>Purchased Professional and Technical Services</u>				
330 Other Professional Services				221,131.89
Total Purchased Professional and Technical Services				\$221,131.89
500 <u>Other Purchased Services</u>				
520 Insurance – General				4,296.00
Total Other Purchased Services				\$4,296.00
Total 2330 Tax Assessment and Collection Services				\$225,946.80

LEA : 103021603 Carlynton SD

Printed 11/25/2024 2:00:25 PM

General Fund (10)

2350 Legal and Accounting Services	<u>Elementary</u>	<u>Secondary</u>	<u>Federal</u>	<u>Total</u>
300 <u>Purchased Professional and Technical Services</u>				
330 Other Professional Services				69,759.53
Total Purchased Professional and Technical Services				\$69,759.53
Total 2350 Legal and Accounting Services				\$69,759.53

LEA : 103021603 Carlynton SD

Printed 11/25/2024 2:00:25 PM

General Fund (10)					
2360 Office of the Superintendent / Executive Director Services		Elementary	Secondary	Federal	Total
100 Personnel Services – Salaries					
100 Personnel Services – Salaries					311,924.71
Total Personnel Services – Salaries					\$311,924.71
200 Personnel Services – Employee Benefits					
210 Group Insurance – Contracted Provider					68,564.46
220 Social Security Contributions					23,210.76
230 PSERS Retirement Contributions					92,724.05
260 Workers' Compensation					1,471.17
Total Personnel Services – Employee Benefits					\$185,970.44
300 Purchased Professional and Technical Services					
330 Other Professional Services					6,821.00
Total Purchased Professional and Technical Services					\$6,821.00
400 Purchased Property Services					
440 Rentals					1,292.05
Total Purchased Property Services					\$1,292.05
500 Other Purchased Services					
549 Other Advertising/Public Relations					16,403.91
580 Travel					6,776.11
Total Other Purchased Services					\$23,180.02
600 Supplies					
610 General Supplies					7,751.26
630 Food					6,163.06
640 Books and Periodicals					469.89
650 Supplies & Fees – Technology Related					84.80
Total Supplies					\$14,469.01
800 Other Objects					
810 Dues and Fees					10,038.81
Total Other Objects					\$10,038.81
Total 2360 Office of the Superintendent / Executive Director Services					\$553,696.04

LEA : 103021603 Carlynton SD

Printed 11/25/2024 2:00:25 PM

General Fund (10)

2380 Office of the Principal Services	Elementary	Secondary	Federal	Total
100 <u>Personnel Services – Salaries</u>				
100 Personnel Services – Salaries	281,072.60	256,310.68		537,383.28
Total Personnel Services – Salaries	\$281,072.60	\$256,310.68		\$537,383.28
200 <u>Personnel Services – Employee Benefits</u>				
210 Group Insurance – Contracted Provider	119,139.94	70,644.85		189,784.79
220 Social Security Contributions	20,514.04	19,036.28		39,550.32
230 PSERS Retirement Contributions	94,348.58	66,122.41		160,470.99
260 Workers' Compensation	1,325.57	1,208.97		2,534.54
Total Personnel Services – Employee Benefits	\$235,328.13	\$157,012.51		\$392,340.64
500 <u>Other Purchased Services</u>				
580 Travel	9,294.84	328.97		9,623.81
Total Other Purchased Services	\$9,294.84	\$328.97		\$9,623.81
600 <u>Supplies</u>				
610 General Supplies	10,459.54	4,777.05		15,236.59
630 Food	115.38	18.26		133.64
Total Supplies	\$10,574.92	\$4,795.31		\$15,370.23
800 <u>Other Objects</u>				
810 Dues and Fees	1,000.00	255.73		1,255.73
Total Other Objects	\$1,000.00	\$255.73		\$1,255.73
Total 2380 Office of the Principal Services	\$537,270.49	\$418,703.20		\$955,973.69

LEA : 103021603 Carlynton SD

Printed 11/25/2024 2:00:25 PM

General Fund (10)

2400 Support Services – Pupil Health	<u>Elementary</u>	<u>Secondary</u>	<u>Federal</u>	<u>Total</u>
100 <u>Personnel Services – Salaries</u>				
100 Personnel Services – Salaries			8,881.50	114,447.96
Total Personnel Services – Salaries			\$8,881.50	\$114,447.96
200 <u>Personnel Services – Employee Benefits</u>				
210 Group Insurance – Contracted Provider			3,602.25	28,200.34
220 Social Security Contributions			678.38	8,311.09
230 PSERS Retirement Contributions			3,019.70	36,314.54
260 Workers' Compensation			41.90	539.76
Total Personnel Services – Employee Benefits			\$7,342.23	\$73,365.73
300 <u>Purchased Professional and Technical Services</u>				
329 Professional Educational Services – Other				146,928.38
330 Other Professional Services			263.50	92,620.58
340 Technical Services			7,446.47	7,446.47
Total Purchased Professional and Technical Services			\$7,709.97	\$246,995.43
600 <u>Supplies</u>				
610 General Supplies			75.90	8,507.20
650 Supplies & Fees – Technology Related				3,300.00
Total Supplies			\$75.90	\$11,807.20
800 <u>Other Objects</u>				
810 Dues and Fees				328.00
Total Other Objects				\$328.00
Total 2400 Support Services – Pupil Health			\$24,009.60	\$446,944.32

LEA : 103021603 Carlynton SD

Printed 11/25/2024 2:00:25 PM

General Fund (10)

2420 Medical Services

<u>Elementary</u>	<u>Secondary</u>	<u>Federal</u>	<u>Total</u>
-------------------	------------------	----------------	--------------

300 Purchased Professional and Technical Services

330 Other Professional Services		263.50	263.50
---------------------------------	--	--------	--------

Total Purchased Professional and Technical Services		\$263.50	\$263.50
--	--	-----------------	-----------------

Total 2420 Medical Services		\$263.50	\$263.50
------------------------------------	--	-----------------	-----------------

LEA : 103021603 Carlynton SD

Printed 11/25/2024 2:00:25 PM

General Fund (10)

2440 Nursing Services

	<u>Elementary</u>	<u>Secondary</u>	<u>Federal</u>	<u>Total</u>
100 <u>Personnel Services – Salaries</u>				
100 Personnel Services – Salaries			8,881.50	90,681.04
Total Personnel Services – Salaries			\$8,881.50	\$90,681.04
200 <u>Personnel Services – Employee Benefits</u>				
210 Group Insurance – Contracted Provider			3,602.25	22,909.52
220 Social Security Contributions			678.38	6,601.05
230 PSERS Retirement Contributions			3,019.70	28,233.75
260 Workers' Compensation			41.90	427.58
Total Personnel Services – Employee Benefits			\$7,342.23	\$58,171.90
300 <u>Purchased Professional and Technical Services</u>				
329 Professional Educational Services – Other				146,928.38
330 Other Professional Services				92,357.08
340 Technical Services			7,446.47	7,446.47
Total Purchased Professional and Technical Services			\$7,446.47	\$246,731.93
600 <u>Supplies</u>				
610 General Supplies			75.90	8,507.20
650 Supplies & Fees – Technology Related				3,300.00
Total Supplies			\$75.90	\$11,807.20
800 <u>Other Objects</u>				
810 Dues and Fees				328.00
Total Other Objects				\$328.00
Total 2440 Nursing Services			\$23,746.10	\$407,720.07

LEA : 103021603 Carlynton SD

Printed 11/25/2024 2:00:25 PM

General Fund (10)

2450 Nonpublic Health Services	<u>Elementary</u>	<u>Secondary</u>	<u>Federal</u>	<u>Total</u>
100 <u>Personnel Services – Salaries</u>				
100 Personnel Services – Salaries				23,766.92
Total Personnel Services – Salaries				\$23,766.92
200 <u>Personnel Services – Employee Benefits</u>				
210 Group Insurance – Contracted Provider				5,290.82
220 Social Security Contributions				1,710.04
230 PSERS Retirement Contributions				8,080.79
260 Workers' Compensation				112.18
Total Personnel Services – Employee Benefits				\$15,193.83
Total 2450 Nonpublic Health Services				\$38,960.75

LEA : 103021603 Carlynton SD

Printed 11/25/2024 2:00:25 PM

General Fund (10)

2500 Support Services – Business	<u>Elementary</u>	<u>Secondary</u>	<u>Federal</u>	<u>Total</u>
100 <u>Personnel Services – Salaries</u>				
100 Personnel Services – Salaries				191,646.13
Total Personnel Services – Salaries				\$191,646.13
200 <u>Personnel Services – Employee Benefits</u>				
210 Group Insurance – Contracted Provider				30,571.90
220 Social Security Contributions				14,546.65
230 PSERS Retirement Contributions				63,017.10
260 Workers' Compensation				924.30
Total Personnel Services – Employee Benefits				\$109,059.95
300 <u>Purchased Professional and Technical Services</u>				
330 Other Professional Services				51,955.54
Total Purchased Professional and Technical Services				\$51,955.54
500 <u>Other Purchased Services</u>				
520 Insurance – General				200.00
530 Communications				7,885.32
580 Travel				2,549.27
Total Other Purchased Services				\$10,634.59
600 <u>Supplies</u>				
610 General Supplies				579.04
640 Books and Periodicals				113.00
650 Supplies & Fees – Technology Related				17,385.00
Total Supplies				\$18,077.04
800 <u>Other Objects</u>				
810 Dues and Fees				11,147.90
Total Other Objects				\$11,147.90
Total 2500 Support Services – Business				\$392,521.15

LEA : 103021603 Carlynton SD

Printed 11/25/2024 2:00:25 PM

General Fund (10)

2510 Fiscal Services

Elementary Secondary Federal Total

100 <u>Personnel Services – Salaries</u>				
100 Personnel Services – Salaries				191,646.13
Total Personnel Services – Salaries				\$191,646.13
200 <u>Personnel Services – Employee Benefits</u>				
210 Group Insurance – Contracted Provider				30,571.90
220 Social Security Contributions				14,546.65
230 PSERS Retirement Contributions				63,017.10
260 Workers' Compensation				924.30
Total Personnel Services – Employee Benefits				\$109,059.95
300 <u>Purchased Professional and Technical Services</u>				
330 Other Professional Services				51,955.54
Total Purchased Professional and Technical Services				\$51,955.54
500 <u>Other Purchased Services</u>				
520 Insurance – General				200.00
530 Communications				7,885.32
580 Travel				2,549.27
Total Other Purchased Services				\$10,634.59
600 <u>Supplies</u>				
610 General Supplies				579.04
640 Books and Periodicals				113.00
650 Supplies & Fees – Technology Related				17,385.00
Total Supplies				\$18,077.04
800 <u>Other Objects</u>				
810 Dues and Fees				11,147.90
Total Other Objects				\$11,147.90
Total 2510 Fiscal Services				\$392,521.15

LEA : 103021603 Carlynton SD

Printed 11/25/2024 2:00:25 PM

General Fund (10)

2511 Supervision of Fiscal Services - Head of Component	<u>Elementary</u>	<u>Secondary</u>	<u>Federal</u>	<u>Total</u>
100 <u>Personnel Services – Salaries</u>				
100 Personnel Services – Salaries				191,646.13
Total Personnel Services – Salaries				\$191,646.13
200 <u>Personnel Services – Employee Benefits</u>				
210 Group Insurance – Contracted Provider				30,571.90
220 Social Security Contributions				14,546.65
230 PSERS Retirement Contributions				63,017.10
260 Workers' Compensation				924.30
Total Personnel Services – Employee Benefits				\$109,059.95
300 <u>Purchased Professional and Technical Services</u>				
330 Other Professional Services				51,955.54
Total Purchased Professional and Technical Services				\$51,955.54
500 <u>Other Purchased Services</u>				
520 Insurance – General				200.00
530 Communications				7,885.32
580 Travel				2,549.27
Total Other Purchased Services				\$10,634.59
600 <u>Supplies</u>				
610 General Supplies				579.04
640 Books and Periodicals				113.00
650 Supplies & Fees – Technology Related				17,385.00
Total Supplies				\$18,077.04
800 <u>Other Objects</u>				
810 Dues and Fees				11,147.90
Total Other Objects				\$11,147.90
Total 2511 Supervision of Fiscal Services - Head of Component				\$392,521.15

LEA : 103021603 Carlynton SD

Printed 11/25/2024 2:00:25 PM

General Fund (10)

2600 Operation and Maintenance of Plant Services	Elementary	Secondary	Federal	Total
100 <u>Personnel Services – Salaries</u>				
100 Personnel Services – Salaries				904,618.70
Total Personnel Services – Salaries				\$904,618.70
200 <u>Personnel Services – Employee Benefits</u>				
210 Group Insurance – Contracted Provider				302,920.01
220 Social Security Contributions				67,122.99
230 PSERS Retirement Contributions				296,893.22
260 Workers' Compensation				4,268.19
299 All Other Employee Benefits				2,855.70
Total Personnel Services – Employee Benefits				\$674,060.11
300 <u>Purchased Professional and Technical Services</u>				
330 Other Professional Services				5,513.99
350 Security / Safety Services				24,478.25
Total Purchased Professional and Technical Services				\$29,992.24
400 <u>Purchased Property Services</u>				
410 Cleaning Services				54,722.23
420 Utility Services				82,767.65
430 Repairs and Maintenance Services			156,939.55	451,489.07
440 Rentals				5,396.00
460 Extermination Services				3,542.00
Total Purchased Property Services			\$156,939.55	\$597,916.95
500 <u>Other Purchased Services</u>				
521 Fire Insurance				49,442.00
522 Automotive Liability Insurance				3,205.00
523 General Property and Liability Insurance				31,439.00
529 Other Insurance				12,946.88
530 Communications				43,854.18
580 Travel				2,601.20
Total Other Purchased Services				\$143,488.26
600 <u>Supplies</u>				
610 General Supplies	163,299.40	820.53	5,660.36	169,780.29
620 Energy				340,207.08
650 Supplies & Fees – Technology Related				99.99
Total Supplies	\$163,299.40	\$820.53	\$5,660.36	\$510,087.36
700 <u>Property</u>				
762 Capitalized Equipment - Replacement				18,708.00
Total Property				\$18,708.00
800 <u>Other Objects</u>				
810 Dues and Fees				1,188.61
Total Other Objects				\$1,188.61
Total 2600 Operation and Maintenance of Plant Services	\$163,299.40	\$820.53	\$162,599.91	\$2,880,060.23

LEA : 103021603 Carlynton SD

Printed 11/25/2024 2:00:25 PM

General Fund (10)

2620 Operation of Buildings Services	Elementary	Secondary	Federal	Total
100 <u>Personnel Services – Salaries</u>				
100 Personnel Services – Salaries				898,561.73
Total Personnel Services – Salaries				\$898,561.73
200 <u>Personnel Services – Employee Benefits</u>				
210 Group Insurance – Contracted Provider				302,920.01
220 Social Security Contributions				66,674.73
230 PSERS Retirement Contributions				294,853.22
260 Workers' Compensation				4,239.90
299 All Other Employee Benefits				2,855.70
Total Personnel Services – Employee Benefits				\$671,543.56
300 <u>Purchased Professional and Technical Services</u>				
330 Other Professional Services				5,127.99
350 Security / Safety Services				8,621.25
Total Purchased Professional and Technical Services				\$13,749.24
400 <u>Purchased Property Services</u>				
410 Cleaning Services				54,722.23
420 Utility Services				82,767.65
430 Repairs and Maintenance Services			156,939.55	451,489.07
440 Rentals				5,396.00
460 Extermination Services				3,542.00
Total Purchased Property Services			\$156,939.55	\$597,916.95
500 <u>Other Purchased Services</u>				
521 Fire Insurance				49,442.00
522 Automotive Liability Insurance				3,205.00
523 General Property and Liability Insurance				31,439.00
529 Other Insurance				12,946.88
530 Communications				43,854.18
580 Travel				2,601.20
Total Other Purchased Services				\$143,488.26
600 <u>Supplies</u>				
610 General Supplies	158,254.07	820.53	5,660.36	164,734.96
620 Energy				340,207.08
650 Supplies & Fees – Technology Related				99.99
Total Supplies	\$158,254.07	\$820.53	\$5,660.36	\$505,042.03
700 <u>Property</u>				
762 Capitalized Equipment - Replacement				18,708.00
Total Property				\$18,708.00
800 <u>Other Objects</u>				
810 Dues and Fees				1,188.61
Total Other Objects				\$1,188.61
Total 2620 Operation of Buildings Services	\$158,254.07	\$820.53	\$162,599.91	\$2,850,198.38

LEA : 103021603 Carlynton SD

Printed 11/25/2024 2:00:25 PM

General Fund (10)

2660 Safety and Security Services	<u>Elementary</u>	<u>Secondary</u>	<u>Federal</u>	<u>Total</u>
100 <u>Personnel Services – Salaries</u>				
100 Personnel Services – Salaries				6,056.97
Total Personnel Services – Salaries				\$6,056.97
200 <u>Personnel Services – Employee Benefits</u>				
220 Social Security Contributions				448.26
230 PSERS Retirement Contributions				2,040.00
260 Workers’ Compensation				28.29
Total Personnel Services – Employee Benefits				\$2,516.55
300 <u>Purchased Professional and Technical Services</u>				
330 Other Professional Services				386.00
350 Security / Safety Services				15,857.00
Total Purchased Professional and Technical Services				\$16,243.00
600 <u>Supplies</u>				
610 General Supplies	5,045.33			5,045.33
Total Supplies	\$5,045.33			\$5,045.33
Total 2660 Safety and Security Services	\$5,045.33			\$29,861.85

LEA : 103021603 Carlynton SD

Printed 11/25/2024 2:00:25 PM

General Fund (10)

2700 Student Transportation Services	<u>Elementary</u>	<u>Secondary</u>	<u>Federal</u>	<u>Total</u>
500 <u>Other Purchased Services</u>				
513 Contracted Carriers				2,419,494.65
515 Public Carriers				1,758.00
516 Student Transportation Services From the IU				594.75
Total Other Purchased Services				\$2,421,847.40
600 <u>Supplies</u>				
610 General Supplies				46,430.00
650 Supplies & Fees – Technology Related				3,352.70
Total Supplies				\$49,782.70
Total 2700 Student Transportation Services				\$2,471,630.10

LEA : 103021603 Carlynton SD

Printed 11/25/2024 2:00:25 PM

General Fund (10)

2720 Vehicle Operation Services	<u>Elementary</u>	<u>Secondary</u>	<u>Federal</u>	<u>Total</u>
500 <u>Other Purchased Services</u>				
513 Contracted Carriers				1,488,730.49
515 Public Carriers				585.00
516 Student Transportation Services From the IU				594.75
Total Other Purchased Services				\$1,489,910.24
600 <u>Supplies</u>				
610 General Supplies				46,430.00
650 Supplies & Fees – Technology Related				3,352.70
Total Supplies				\$49,782.70
Total 2720 Vehicle Operation Services				\$1,539,692.94

LEA : 103021603 Carlynton SD

Printed 11/25/2024 2:00:25 PM

General Fund (10)

2750 Nonpublic Transportation	<u>Elementary</u>	<u>Secondary</u>	<u>Federal</u>	<u>Total</u>
500 <u>Other Purchased Services</u>				
513 Contracted Carriers				930,764.16
515 Public Carriers				1,173.00
Total Other Purchased Services				\$931,937.16
Total 2750 Nonpublic Transportation				\$931,937.16

LEA : 103021603 Carlynton SD

Printed 11/25/2024 2:00:25 PM

General Fund (10)

2800 Support Services – Central	<u>Elementary</u>	<u>Secondary</u>	<u>Federal</u>	<u>Total</u>
100 <u>Personnel Services – Salaries</u>				
100 Personnel Services – Salaries				53,048.33
Total Personnel Services – Salaries				\$53,048.33
200 <u>Personnel Services – Employee Benefits</u>				
210 Group Insurance – Contracted Provider				22,628.18
220 Social Security Contributions				3,974.85
230 PSERS Retirement Contributions				18,036.40
240 Tuition Reimbursement				800.00
260 Workers' Compensation				250.21
Total Personnel Services – Employee Benefits				\$45,689.64
500 <u>Other Purchased Services</u>				
580 Travel				2,558.06
Total Other Purchased Services				\$2,558.06
600 <u>Supplies</u>				
650 Supplies & Fees – Technology Related				2,750.00
Total Supplies				\$2,750.00
800 <u>Other Objects</u>				
810 Dues and Fees				518.97
Total Other Objects				\$518.97
Total 2800 Support Services – Central				\$104,565.00

LEA : 103021603 Carlynton SD

Printed 11/25/2024 2:00:25 PM

General Fund (10)

2830 Staff Services

	<u>Elementary</u>	<u>Secondary</u>	<u>Federal</u>	<u>Total</u>
100 <u>Personnel Services – Salaries</u>				
100 Personnel Services – Salaries				53,048.33
Total Personnel Services – Salaries				\$53,048.33
200 <u>Personnel Services – Employee Benefits</u>				
210 Group Insurance – Contracted Provider				22,628.18
220 Social Security Contributions				3,974.85
230 PSERS Retirement Contributions				18,036.40
240 Tuition Reimbursement				800.00
260 Workers' Compensation				250.21
Total Personnel Services – Employee Benefits				\$45,689.64
500 <u>Other Purchased Services</u>				
580 Travel				2,558.06
Total Other Purchased Services				\$2,558.06
600 <u>Supplies</u>				
650 Supplies & Fees – Technology Related				2,750.00
Total Supplies				\$2,750.00
800 <u>Other Objects</u>				
810 Dues and Fees				518.97
Total Other Objects				\$518.97
Total 2830 Staff Services				\$104,565.00

LEA : 103021603 Carlynton SD

Printed 11/25/2024 2:00:25 PM

General Fund (10)				
2831 Supervision of Staff Services	<u>Elementary</u>	<u>Secondary</u>	<u>Federal</u>	<u>Total</u>
100 <u>Personnel Services – Salaries</u>				
100 Personnel Services – Salaries				53,048.33
Total Personnel Services – Salaries				\$53,048.33
200 <u>Personnel Services – Employee Benefits</u>				
210 Group Insurance – Contracted Provider				22,628.18
220 Social Security Contributions				3,974.85
230 PSERS Retirement Contributions				18,036.40
260 Workers' Compensation				250.21
Total Personnel Services – Employee Benefits				\$44,889.64
500 <u>Other Purchased Services</u>				
580 Travel				2,334.79
Total Other Purchased Services				\$2,334.79
600 <u>Supplies</u>				
650 Supplies & Fees – Technology Related				2,750.00
Total Supplies				\$2,750.00
800 <u>Other Objects</u>				
810 Dues and Fees				518.97
Total Other Objects				\$518.97
Total 2831 Supervision of Staff Services				\$103,541.73

LEA : 103021603 Carlynton SD

Printed 11/25/2024 2:00:25 PM

General Fund (10)

2834 Staff Development Services – Non-Instructional, Certified Staff Only	<u>Elementary</u>	<u>Secondary</u>	<u>Federal</u>	<u>Total</u>
200 <u>Personnel Services – Employee Benefits</u>				
240 Tuition Reimbursement				800.00
Total Personnel Services – Employee Benefits				\$800.00
500 <u>Other Purchased Services</u>				
580 Travel				223.27
Total Other Purchased Services				\$223.27
Total 2834 Staff Development Services – Non-Instructional, Certified Staff Only				\$1,023.27

LEA : 103021603 Carlynton SD

Printed 11/25/2024 2:00:25 PM

General Fund (10)

2900 Other Support Services	<u>Elementary</u>	<u>Secondary</u>	<u>Federal</u>	<u>Total</u>
500 <u>Other Purchased Services</u>				
595 IU Payments By Withholding				20,576.01
Total Other Purchased Services				\$20,576.01
Total 2900 Other Support Services				\$20,576.01

LEA : 103021603 Carlynton SD

Printed 11/25/2024 2:00:25 PM

General Fund (10)

2910 Support Services Not Listed Elsewhere In the 2000 Series

Elementary Secondary Federal Total

500 <u>Other Purchased Services</u>				
595 IU Payments By Withholding				20,576.01
Total Other Purchased Services				\$20,576.01
Total 2910 Support Services Not Listed Elsewhere In the 2000 Series				\$20,576.01

LEA : 103021603 Carlynton SD

Printed 11/25/2024 2:00:35 PM

General Fund (10)

3000 Operation of Non-Instructional Services		<u>Total</u>
100 <u>Personnel Services – Salaries</u>		
100 Personnel Services – Salaries		333,150.13
Total Personnel Services – Salaries		\$333,150.13
200 <u>Personnel Services – Employee Benefits</u>		
210 Group Insurance – Contracted Provider		2,750.10
220 Social Security Contributions		24,472.10
230 PSERS Retirement Contributions		94,684.49
260 Workers' Compensation		1,526.32
Total Personnel Services – Employee Benefits		\$123,433.01
300 <u>Purchased Professional and Technical Services</u>		
330 Other Professional Services		85,198.56
340 Technical Services		5,363.88
350 Security / Safety Services		6,609.80
390 Other Purchased Professional and Technical Services		46,663.34
Total Purchased Professional and Technical Services		\$143,835.58
400 <u>Purchased Property Services</u>		
430 Repairs and Maintenance Services		4,808.10
440 Rentals		2,021.16
Total Purchased Property Services		\$6,829.26
500 <u>Other Purchased Services</u>		
510 Student Transportation Services		85,461.47
520 Insurance – General		100.00
580 Travel		18,007.57
Total Other Purchased Services		\$103,569.04
600 <u>Supplies</u>		
610 General Supplies		114,306.54
Total Supplies		\$114,306.54
800 <u>Other Objects</u>		
810 Dues and Fees		13,011.03
890 Miscellaneous Expenditures		102.93
Total Other Objects		\$13,113.96
Total 3000 Operation of Non-Instructional Services		\$838,237.52

LEA : 103021603 Carlynton SD

Printed 11/25/2024 2:00:35 PM

General Fund (10)

3200 Student Activities

Elementary Secondary Federal Total

100 <u>Personnel Services – Salaries</u>				
100 Personnel Services – Salaries				328,850.13
Total Personnel Services – Salaries				\$328,850.13
200 <u>Personnel Services – Employee Benefits</u>				
210 Group Insurance – Contracted Provider				2,750.10
220 Social Security Contributions				24,154.46
230 PSERS Retirement Contributions				93,222.49
260 Workers' Compensation				1,506.32
Total Personnel Services – Employee Benefits				\$121,633.37
300 <u>Purchased Professional and Technical Services</u>				
330 Other Professional Services				85,198.56
350 Security / Safety Services				6,609.80
390 Other Purchased Professional and Technical Services				704.01
Total Purchased Professional and Technical Services				\$92,512.37
400 <u>Purchased Property Services</u>				
430 Repairs and Maintenance Services				4,808.10
440 Rentals				2,021.16
Total Purchased Property Services				\$6,829.26
500 <u>Other Purchased Services</u>				
510 Student Transportation Services				85,461.47
520 Insurance – General				100.00
580 Travel				18,007.57
Total Other Purchased Services				\$103,569.04
600 <u>Supplies</u>				
610 General Supplies				111,295.87
Total Supplies				\$111,295.87
800 <u>Other Objects</u>				
810 Dues and Fees				13,011.03
890 Miscellaneous Expenditures				102.93
Total Other Objects				\$13,113.96
Total 3200 Student Activities				\$777,804.00

LEA : 103021603 Carlynton SD

Printed 11/25/2024 2:00:35 PM

General Fund (10)

3300 Community Services	<u>Elementary</u>	<u>Secondary</u>	<u>Federal</u>	<u>Total</u>
100 <u>Personnel Services – Salaries</u>				
100 Personnel Services – Salaries			4,300.00	4,300.00
Total Personnel Services – Salaries			\$4,300.00	\$4,300.00
200 <u>Personnel Services – Employee Benefits</u>				
220 Social Security Contributions			317.64	317.64
230 PSERS Retirement Contributions			1,462.00	1,462.00
260 Workers’ Compensation			20.00	20.00
Total Personnel Services – Employee Benefits			\$1,799.64	\$1,799.64
300 <u>Purchased Professional and Technical Services</u>				
340 Technical Services				5,363.88
390 Other Purchased Professional and Technical Services				45,959.33
Total Purchased Professional and Technical Services				\$51,323.21
600 <u>Supplies</u>				
610 General Supplies			2,759.91	3,010.67
Total Supplies			\$2,759.91	\$3,010.67
Total 3300 Community Services			\$8,859.55	\$60,433.52

LEA : 103021603 Carlynton SD

Printed 11/25/2024 2:00:41 PM

General Fund (10)

4000 Facilities Acquisition, Construction and Improvement Services		<u>Total</u>
300 <u>Purchased Professional and Technical Services</u>		
330 Other Professional Services		33,092.47
Total Purchased Professional and Technical Services		\$33,092.47
400 <u>Purchased Property Services</u>		
450 Construction Services		280,382.97
Total Purchased Property Services		\$280,382.97
Total 4000 Facilities Acquisition, Construction and Improvement Services		\$313,475.44

LEA : 103021603 Carlynton SD

Printed 11/25/2024 2:00:41 PM

General Fund (10)

4600 Existing Building Improvement Services	<u>Elementary</u>	<u>Secondary</u>	<u>Federal</u>	<u>Total</u>
300 <u>Purchased Professional and Technical Services</u>				
330 Other Professional Services			33,092.47	33,092.47
Total Purchased Professional and Technical Services			\$33,092.47	\$33,092.47
400 <u>Purchased Property Services</u>				
450 Construction Services			188,743.91	280,382.97
Total Purchased Property Services			\$188,743.91	\$280,382.97
Total 4600 Existing Building Improvement Services			\$221,836.38	\$313,475.44

LEA : 103021603 Carlynton SD

Printed 11/25/2024 2:00:45 PM

General Fund (10)

5000 Other Expenditures and Financing Uses

Total

800	<u>Other Objects</u>	
830	Interest	122,334.26
880	Refunds of Prior Years' Receipts	270,614.91
Total Other Objects		\$392,949.17
900	<u>Other Uses of Funds</u>	
910	Redemption of Principal	258,543.00
939	Other Fund Transfers	385,000.00
Total Other Uses of Funds		\$643,543.00
Total 5000 Other Expenditures and Financing Uses		\$1,036,492.17

LEA : 103021603 Carlynton SD

Printed 11/25/2024 2:00:45 PM

General Fund (10)

5100 Debt Service / Other Expenditures and Financing Uses	<u>Elementary</u>	<u>Secondary</u>	<u>Federal</u>	<u>Total</u>
800 <u>Other Objects</u>				
830 Interest				122,334.26
880 Refunds of Prior Years' Receipts				270,614.91
Total Other Objects				\$392,949.17
900 <u>Other Uses of Funds</u>				
910 Redemption of Principal				258,543.00
Total Other Uses of Funds				\$258,543.00
Total 5100 Debt Service / Other Expenditures and Financing Uses				\$651,492.17

LEA : 103021603 Carlynton SD

Printed 11/25/2024 2:00:45 PM

General Fund (10)

5110 Debt Service	<u>Elementary</u>	<u>Secondary</u>	<u>Federal</u>	<u>Total</u>
800 <u>Other Objects</u>				
830 Interest				120,406.26
Total Other Objects				\$120,406.26
900 <u>Other Uses of Funds</u>				
910 Redemption of Principal				210,000.00
Total Other Uses of Funds				\$210,000.00
Total 5110 Debt Service				\$330,406.26

LEA : 103021603 Carlynton SD

Printed 11/25/2024 2:00:45 PM

General Fund (10)

5130 Refund of Prior Year Revenues / Receipts	<u>Elementary</u>	<u>Secondary</u>	<u>Federal</u>	<u>Total</u>
800 <u>Other Objects</u>				
880 Refunds of Prior Years' Receipts				270,614.91
Total Other Objects				\$270,614.91
Total 5130 Refund of Prior Year Revenues / Receipts				\$270,614.91

LEA : 103021603 Carlynton SD

Printed 11/25/2024 2:00:45 PM

General Fund (10)

5140 Leases and Other Right-to-Use Arrangements	<u>Elementary</u>	<u>Secondary</u>	<u>Federal</u>	<u>Total</u>
800 <u>Other Objects</u>				
830 Interest				1,928.00
Total Other Objects				\$1,928.00
900 <u>Other Uses of Funds</u>				
910 Redemption of Principal				48,543.00
Total Other Uses of Funds				\$48,543.00
Total 5140 Leases and Other Right-to-Use Arrangements				\$50,471.00

LEA : 103021603 Carlynton SD

Printed 11/25/2024 2:00:45 PM

General Fund (10)

5200 Interfund Transfers – Out	<u>Elementary</u>	<u>Secondary</u>	<u>Federal</u>	<u>Total</u>
900 <u>Other Uses of Funds</u>				
939 Other Fund Transfers				385,000.00
Total Other Uses of Funds				\$385,000.00
Total 5200 Interfund Transfers – Out				\$385,000.00

LEA : 103021603 Carlynton SD

Printed 11/25/2024 2:00:45 PM

General Fund (10)

5230 Capital Projects Fund Transfers	<u>Elementary</u>	<u>Secondary</u>	<u>Federal</u>	<u>Total</u>
900 <u>Other Uses of Funds</u>				
939 Other Fund Transfers				385,000.00
Total Other Uses of Funds				\$385,000.00
Total 5230 Capital Projects Fund Transfers				\$385,000.00

LEA : 103021603 Carlynton SD

Printed 11/25/2024 2:00:54 PM

	<u>General Fund(10)</u>	<u>Student Sponsored Activity Fund(21)</u>	<u>Public Purpose Trust(27)</u>	<u>Other Compt Approved (28)</u>	<u>Athletic / Activity(29)</u>
1000 <u>Instruction</u>					
1100 Regular Programs - Elementary / Secondary	15,437,205.00				
1200 Special Programs - Elementary / Secondary	5,395,263.74				
1300 Vocational Education	876,562.74				
1400 Other Instructional Programs - Elementary / Secondary	27,817.32				
1500 Nonpublic School Programs	34,062.82				
Total Instruction	\$21,770,911.62				
2000 <u>Support Services</u>					
2100 Support Services - Students	1,554,361.78				
2200 Support Services - Instructional Staff	1,130,897.00				
2300 Support Services - Administration	1,856,208.00				
2400 Support Services - Pupil Health	446,944.32				
2500 Support Services - Business	392,521.15				
2600 Operation and Maintenance of Plant Services	2,880,060.23				
2700 Student Transportation Services	2,471,630.10				
2800 Support Services - Central	104,565.00				
2900 Other Support Services	20,576.01				
Total Support Services	\$10,857,763.59				
3000 <u>Operation of Non-Instructional Services</u>					
3200 Student Activities	777,804.00				
3300 Community Services	60,433.52				
Total Operation of Non-Instructional Services	\$838,237.52				
4000 <u>Facilities Acquisition, Construction and Improvement Services</u>					
4600 Existing Building Improvement Services	313,475.44				
Total Facilities Acquisition, Construction and Improvement Services	\$313,475.44				
5000 <u>Other Expenditures and Financing Uses</u>					
5100 Debt Service / Other Expenditures and Financing Uses	651,492.17				
5200 Interfund Transfers - Out	385,000.00				
Total Other Expenditures and Financing Uses	\$1,036,492.17				
TOTAL ACTUAL EXPENDITURES & OTHER FINANCING USES	\$34,816,880.34				

LEA : 103021603 Carlynton SD

Printed 11/25/2024 2:00:54 PM

	<u>Capital Reserve (690.1850)(31)</u>	<u>Capital Reserve (1431)(32)</u>	<u>Other Capital Projects Fund(39)</u>	<u>Debt Service(40)</u>	<u>Permanent(90)</u>
1000 <u>Instruction</u>					
1100 Regular Programs - Elementary / Secondary					
1200 Special Programs - Elementary / Secondary					
1300 Vocational Education					
1400 Other Instructional Programs - Elementary / Secondary					
1500 Nonpublic School Programs					
Total Instruction					
2000 <u>Support Services</u>					
2100 Support Services - Students					
2200 Support Services - Instructional Staff					
2300 Support Services - Administration					
2400 Support Services - Pupil Health					
2500 Support Services - Business					
2600 Operation and Maintenance of Plant Services					
2700 Student Transportation Services					
2800 Support Services - Central					
2900 Other Support Services					
Total Support Services					
3000 <u>Operation of Non-Instructional Services</u>					
3200 Student Activities					
3300 Community Services					
Total Operation of Non-Instructional Services					
4000 <u>Facilities Acquisition, Construction and Improvement Services</u>					
4600 Existing Building Improvement Services					
Total Facilities Acquisition, Construction and Improvement Services					
5000 <u>Other Expenditures and Financing Uses</u>					
5100 Debt Service / Other Expenditures and Financing Uses					
5200 Interfund Transfers - Out					
Total Other Expenditures and Financing Uses					
TOTAL ACTUAL EXPENDITURES & OTHER FINANCING USES					

LEA : 103021603 Carlynton SD

Printed 11/25/2024 2:00:54 PM

	<u>Total</u>
1000 <u>Instruction</u>	
1100 Regular Programs - Elementary / Secondary	15,437,205.00
1200 Special Programs - Elementary / Secondary	5,395,263.74
1300 Vocational Education	876,562.74
1400 Other Instructional Programs - Elementary / Secondary	27,817.32
1500 Nonpublic School Programs	34,062.82
Total Instruction	\$21,770,911.62
2000 <u>Support Services</u>	
2100 Support Services - Students	1,554,361.78
2200 Support Services - Instructional Staff	1,130,897.00
2300 Support Services - Administration	1,856,208.00
2400 Support Services - Pupil Health	446,944.32
2500 Support Services - Business	392,521.15
2600 Operation and Maintenance of Plant Services	2,880,060.23
2700 Student Transportation Services	2,471,630.10
2800 Support Services - Central	104,565.00
2900 Other Support Services	20,576.01
Total Support Services	\$10,857,763.59
3000 <u>Operation of Non-Instructional Services</u>	
3200 Student Activities	777,804.00
3300 Community Services	60,433.52
Total Operation of Non-Instructional Services	\$838,237.52
4000 <u>Facilities Acquisition, Construction and Improvement Services</u>	
4600 Existing Building Improvement Services	313,475.44
Total Facilities Acquisition, Construction and Improvement Services	\$313,475.44
5000 <u>Other Expenditures and Financing Uses</u>	
5100 Debt Service / Other Expenditures and Financing Uses	651,492.17
5200 Interfund Transfers - Out	385,000.00
Total Other Expenditures and Financing Uses	\$1,036,492.17
TOTAL ACTUAL EXPENDITURES & OTHER FINANCING USES	\$34,816,880.34

LEA : 103021603 Carlynton SD

Printed 11/25/2024 2:01:10 PM

PSERS Salary Data (Salary Data should relate to the General Fund only)

Amount	Description	Amount
	Total Salary Base for salaries subject to PSERS withholding	13,508,237.35
	Total Federally Funded salaries subject to PSERS withholding	860,642.15

Title I Expenditure Data

Amount	Description	Amount
	Expenditures Funded with Current Title I Funds	507,112.67
Total	Title I Expenditure Data	\$507,112.67

Title IV Revenue Data

Amount	Description	Amount
	Revenue from Title IV-A-1: Student Support and Academic Enrichment Grants	37,783.00

1 .	<u>Current Special Education Expenditures within Function 1000</u> See list of exclusions in the note below.	4,750,137.54
2 .	<u>Current Special Education Expenditures within Function 2000</u> See list of exclusions in the note below.	3,063,633.90
2A.	<u>Current Special Education Expenditures within Sub-Function 2100</u> This data should also be included in line 2 above. See list of exclusions in the note below.	862,092.82
2B.	<u>Current Special Education Expenditures within Sub-Function 2200</u> This data should also be included in line 2 above. See list of exclusions in the note below.	252,179.37
2C.	<u>Current Special Education Expenditures within Sub-Function 2700</u> This data should also be included in line 2 above. See list of exclusions in the note below.	369,383.57
3.	<u>Current Special Education Expenditures within Sub-Function 3100</u> See list of exclusions in the note below.	232,941.80
4.	<u>Current Special Education Expenditures within Sub-Function 3200</u> See list of exclusions in the note below.	39,534.89

Note: The Current Special Education Expenditure amounts for each line should be calculated as follows:

- * Include the total expenditures for special education costs from all governmental funds and the food service fund 51 for the function/sub-function requested
- * Exclude data from sub-functions: 1243,1450,1500,1600,1807,2280,2450,2750,2990
- * Exclude data from objects: 322,511,512,516,561,562,564,566,592,593,594,595,596,597,700,830,899

Benefits for Staff Relative to Collective Bargaining Agreements

	OBJECT	COVERED	NOT COVERED	TOTAL
10 General Fund	No Self Insurance data to report			
	211 Medical Insurance	2,922,774.64	265,109.84	3,187,884.48
	212 Dental Insurance	155,015.99	11,193.38	166,209.37
	215 Eye Care Insurance	24,189.39	1,943.78	26,133.17
	216 Prescription Insurance			
	271 Self-Insurance Medical Benefits			
	272 Self-Insurance Dental Benefits			
	275 Self-Insurance Eye Care Benefits			
	276 Self-Insurance Prescription Benefits			
	FUND TOTAL	\$3,101,980.02	\$278,247.00	\$3,380,227.02
50 Enterprise Fund	No Self Insurance data to report			
	211 Medical Insurance	25,601.21		25,601.21
	212 Dental Insurance	1,209.29		1,209.29
	215 Eye Care Insurance	185.86		185.86
	216 Prescription Insurance			
	271 Self-Insurance Medical Benefits			
	272 Self-Insurance Dental Benefits			
	275 Self-Insurance Eye Care Benefits			
	276 Self-Insurance Prescription Benefits			
	FUND TOTAL	\$26,996.36		\$26,996.36
60 Internal Service Fund	No Self Insurance data to report			
	211 Medical Insurance			
	212 Dental Insurance			
	215 Eye Care Insurance			
	216 Prescription Insurance			
	271 Self-Insurance Medical Benefits			
	272 Self-Insurance Dental Benefits			
	275 Self-Insurance Eye Care Benefits			
	276 Self-Insurance Prescription Benefits			
	FUND TOTAL			
Total of All Funds		\$3,128,976.38	\$278,247.00	\$3,407,223.38

LEA : 103021603 Carlynton SD

Printed 11/25/2024 2:01:31 PM

Function	Special Education (Prior Year)	Nonspecial Education (Prior Year)	Total (Prior Year)	Special Education (Current Year)	Nonspecial Education (Current Year)	Total (Current Year)
2120 Guidance Services	143,209.06	572,836.22	716,045.28	188,441.52	596,731.49	785,173.01
2140 Psychological Services	243,890.58	7,543.00	251,433.58	335,697.54	10,382.40	346,079.94
2150 Speech Pathology and Audiology Services						
2160 Social Work Services	223,585.08		223,585.08	242,330.00		242,330.00
2260 Instruction and Curriculum Development Services	228,898.30	915,593.18	1,144,491.48	69,574.08	278,296.32	347,870.40
2350 Legal and Accounting Services	4,351.43	39,162.88	43,514.31	5,092.00	64,667.53	69,759.53
2420 Medical Services						
2440 Nursing Services	62,334.54	255,698.81	318,033.35	81,852.82	325,867.25	407,720.07
2700 Student Transportation Services	471,171.84	1,932,766.15	2,403,937.99	593,191.22	1,878,438.88	2,471,630.10
Total	\$1,377,440.83	\$3,723,600.24	\$5,101,041.07	\$1,516,179.18	\$3,154,383.87	\$4,670,563.05

LEA : 103021603 Carlynton SD

(PRINCIPAL AMOUNTS ONLY)								
<u>GOVERNMENTAL FUNDS/ ACTIVITIES</u>	Short-Term Borrowing	General Obligation Bonds/Notes	Authority Building Obligations	Leases, Other Right to Use Arrangements	Extended Term Financing Agreements	Other Long Term Debt/Liabilities	OPEB, Comp Abs, Net Pension Liab	Total
1. Debt at Beginning of Fiscal Year		3,900,000.15		103,468.00			46,771,968.00	50,775,436.15
2. Additional Debt Incurred During Year							245,187.00	245,187.00
3. Retirements and Repayments		210,000.00		48,543.00			1,245,252.00	1,503,795.00
4. Debt at End of Fiscal Year		3,690,000.15		54,925.00			45,771,903.00	49,516,828.15
5. Accreted Interest at End Of Fiscal Year								
6. Total Debt and Accreted Interest		3,690,000.15		54,925.00			45,771,903.00	49,516,828.15
7. Current Portion P&I - Due within 1 year		328,219.00		50,471.00			40,041.00	418,731.00
8. Interest Paid during current fiscal year		120,106.00		1,928.00				122,034.00

(PRINCIPAL AMOUNTS ONLY)							
<u>PROPRIETARY FUNDS</u>							
1. Debt at Beginning of Fiscal Year							
2. Additional Debt Incurred During Year							
3. Retirements and Repayments							
4. Debt at End of Fiscal Year							
5. Accreted Interest at End Of Fiscal Year							
6. Total Debt and Accreted Interest							
7. Current Portion P&I - Due within 1 year							
8. Interest Paid during current fiscal year							

LEA : 103021603 Carlynton SD

Total Principal and Interest Payments Made by Your School - All Funds

Function	Fund		Principal (910)	Principal (920)	Interest (830)	Total (Principal +Interest)	Misc Other Uses (990)
5110	10	General Fund	210,000.00		120,406.26	330,406.26	
5110	20	Special Revenue Funds					
5110	30	Capital Projects Funds					
5110	40	Debt Service Fund					
5110	90	Permanent Fund					
5120	10	General Fund					
5120	20	Special Revenue Funds					
5120	30	Capital Projects Funds					
5120	40	Debt Service Fund					
5140	10	General Fund	48,543.00		1,928.00	50,471.00	
5140	20	Special Revenue Funds					
5140	30	Capital Projects Funds					
5140	40	Debt Service Fund					
5140	90	Permanent Fund					
Total Debt Payments - Governmental Funds			\$258,543.00		\$122,334.26	\$380,877.26	

Function	Fund		Principal (910)	Principal (920)	Interest (830)	Total (Principal +Interest)
5110	50	Enterprise Fund				
5110	60	Internal Service Fund				
5120	50	Enterprise Fund				
5120	60	Internal Service Fund				
5140	50	Enterprise Fund				
5140	60	Internal Service Fund				
Total Debt Payments - Proprietary Funds						

LEA : 103021603 Carlynton SD

Debt Details
Governmental Funds/ Activities

Debt Category	Debt Issue Date (MM/YYYY)	Principal Amounts Only				Current Portion Due Within One Year (Principal and Interest)	Interest Paid During Fiscal Year
		Debt at Beginning of Fiscal Year	Additions	Reductions / Repayments	Debt at End of Fiscal Year		
General Obligation Bonds/Notes – CIB	05/2018	3,900,000.15		210,000.00	3,690,000.15	328,219.00	120,106.00
Leases and Other Right to Use Arrangements		103,468.00		48,543.00	54,925.00	50,471.00	1,928.00
Net Pension Liability		38,461,010.00		1,037,103.00	37,423,907.00		
Other Post-Employment Benefits (OPEB)		8,155,731.00		208,149.00	7,947,582.00		
Compensated Absences		155,227.00	245,187.00		400,414.00	40,041.00	
Totals for Debt Entered:		\$50,775,436.15	\$245,187.00	\$1,503,795.00	\$49,516,828.15	\$418,731.00	\$122,034.00

LEA : 103021603 Carlynton SD

General Fund (10)

Section 1: Tuition/Purchased Services as Reported within Expenditure Detail	Amount
Tuition Reported in General Fund Expenditures 1000-560	3,070,379.09
Purchased Services in General Fund Expenditures 1000-594 and 1000-597	9,463.75
Section 1 Total	\$3,079,842.84

Section 2: Tuition Paid to Institution Types During Fiscal Year	Tuition Paid For Nonspecial Education	Tuition Paid For Special Education	Total
1 1306 Institutions			
2 Institutionalized Children's Programs		9,463.75	9,463.75
3 Juveniles Incarcerated in Adult Facilities			
4 Residential Treatment Facilities			
5 Other Local Education Agencies	13,272.00	529,589.47	542,861.47
6 Brick and Mortar Charter Schools	434,870.19	296,970.89	731,841.08
7 Cyber Charter Schools	513,469.19	336,776.92	850,246.11
8 Career and Technology Centers	476,202.61		476,202.61
9 Approved Private Schools		446,268.68	446,268.68
10 PA Chartered Schools for the Deaf and Blind			
11 Private Residential Rehabilitative Institutions			
12 Juvenile Detention Centers	4,245.12		4,245.12
13 Special Program Jointures	15,429.92		15,429.92
14 Other Tuition Not Included Elsewhere In This Section		3,284.10	3,284.10
Section 2 Total	\$1,457,489.03	\$1,622,353.81	\$3,079,842.84

LEA : 103021603 Carlynton SD

Printed 11/25/2024 2:01:46 PM

Food Service / Cafeteria Operations Fund (51)

3000 Operation of Non-Instructional Services		<u>Total</u>
100 <u>Personnel Services – Salaries</u>		
100 Personnel Services – Salaries		167,371.00
Total Personnel Services – Salaries		\$167,371.00
200 <u>Personnel Services – Employee Benefits</u>		
210 Group Insurance – Contracted Provider		26,996.36
220 Social Security Contributions		19,748.21
230 PSERS Retirement Contributions		83,840.54
260 Workers' Compensation		1,393.89
Total Personnel Services – Employee Benefits		\$131,979.00
500 <u>Other Purchased Services</u>		
570 Food Service Management		599,881.03
Total Other Purchased Services		\$599,881.03
600 <u>Supplies</u>		
610 General Supplies		11,641.39
630 Food		119,617.87
Total Supplies		\$131,259.26
700 <u>Property</u>		
740 Depreciation		25,277.86
Total Property		\$25,277.86
Total 3000 Operation of Non-Instructional Services		\$1,055,768.15

LEA : 103021603 Carlynton SD

Printed 11/25/2024 2:01:46 PM

Food Service / Cafeteria Operations Fund (51)

3100 Food Services	<u>Elementary</u>	<u>Secondary</u>	<u>Federal</u>	<u>Total</u>
100 <u>Personnel Services – Salaries</u>				
100 Personnel Services – Salaries				167,371.00
Total Personnel Services – Salaries				\$167,371.00
200 <u>Personnel Services – Employee Benefits</u>				
210 Group Insurance – Contracted Provider				26,996.36
220 Social Security Contributions				19,748.21
230 PSERS Retirement Contributions				83,840.54
260 Workers' Compensation				1,393.89
Total Personnel Services – Employee Benefits				\$131,979.00
500 <u>Other Purchased Services</u>				
570 Food Service Management				599,881.03
Total Other Purchased Services				\$599,881.03
600 <u>Supplies</u>				
610 General Supplies				11,641.39
630 Food				119,617.87
Total Supplies				\$131,259.26
700 <u>Property</u>				
740 Depreciation				25,277.86
Total Property				\$25,277.86
Total 3100 Food Services				\$1,055,768.15

	<u>Food Service(51)</u>	<u>Child Care Operations(52)</u>	<u>Other Enterprise(58)</u>	<u>Internal Service(60)</u>	<u>Total</u>
3000 <u>Operation of Non-Instructional Services</u>					
3100 Food Services	1,055,768.15				1,055,768.15
Total Operation of Non-Instructional Services	\$1,055,768.15				\$1,055,768.15
TOTAL ACTUAL EXPENDITURES & OTHER FINANCING USES	\$1,055,768.15				\$1,055,768.15

LEA : 103021603 Carlynton SD

Printed 11/25/2024 2:02:07 PM

Fund	School	School Number	Local Personnel	Local Nonpersonnel	State Personnel	State Nonpersonnel	Federal Personnel	Federal Nonpersonnel	Total	Explanation
10										
	Carlynton JSHS	79	6,833,672.34	1,600,732.36	3,207,298.45	751,283.67	70,536.07	172,240.14	12,635,763.03	
	Carnegie El Sch	77	4,593,154.27	1,059,661.72	2,155,739.38	497,338.95	495,858.90	141,055.15	8,942,808.37	
	Crafton El Sch	78	3,460,395.51	742,939.19	1,624,093.25	348,689.20	226,179.38	121,781.24	6,524,077.77	
Total			14,887,222.12	3,403,333.27	6,987,131.08	1,597,311.82	792,574.35	435,076.53	28,102,649.17	