

Weymouth Families,

We have updated our current school year's calendar to reflect the change in snow day makeups. It is available here and on our website. There are also several flyers describing various details of our Read Across America week, Literacy Night, Scholastic Book Fair, and PreK registration.

Please see the attached for this week's Friday folder. It includes:

- Updated 24/25 school calendar
- PreK registration flyer
- Read Across America Spirit Week flyer
- Literacy Night flyer
- Scholastic Book Fair flyer
- WACYL Softball and Teeball registration flyer
- PAL Sports flyer
- Memos from Nurse Hooven
- March Meal menus

Have a wonderful weekend!



Weymouth Township School 2024-2025 SCHOOL CALENDAR



2 - Labor Day 3, 4 - Teacher In-Service - NO SCHOOL 5 - FIRST DAY FOR STUDENTS 26 - Back to School Night - SINGLE SESSION	SEPTEMBER 2024 <table border="1" style="width: 100%; border-collapse: collapse; text-align: center;"> <thead> <tr><th>S</th><th>M</th><th>T</th><th>W</th><th>Th</th><th>F</th><th>S</th></tr> </thead> <tbody> <tr><td>1</td><td>2</td><td>3</td><td>4</td><td>5</td><td>6</td><td>7</td></tr> <tr><td>8</td><td>9</td><td>10</td><td>11</td><td>12</td><td>13</td><td>14</td></tr> <tr><td>15</td><td>16</td><td>17</td><td>18</td><td>19</td><td>20</td><td>21</td></tr> <tr><td>22</td><td>23</td><td>24</td><td>25</td><td>26</td><td>27</td><td>28</td></tr> <tr><td>29</td><td>30</td><td></td><td></td><td></td><td></td><td></td></tr> </tbody> </table>	S	M	T	W	Th	F	S	1	2	3	4	5	6	7	8	9	10	11	12	13	14	15	16	17	18	19	20	21	22	23	24	25	26	27	28	29	30						FEBRUARY 2025 <table border="1" style="width: 100%; border-collapse: collapse; text-align: center;"> <thead> <tr><th>S</th><th>M</th><th>T</th><th>W</th><th>Th</th><th>F</th><th>S</th></tr> </thead> <tbody> <tr><td></td><td></td><td></td><td></td><td></td><td></td><td>1</td></tr> <tr><td>2</td><td>3</td><td>4</td><td>5</td><td>6</td><td>7</td><td>8</td></tr> <tr><td>9</td><td>10</td><td>11</td><td>12</td><td>13</td><td>14</td><td>15</td></tr> <tr><td>16</td><td>17</td><td>18</td><td>19</td><td>20</td><td>21</td><td>22</td></tr> <tr><td>23</td><td>24</td><td>25</td><td>26</td><td>27</td><td>28</td><td></td></tr> </tbody> </table>	S	M	T	W	Th	F	S							1	2	3	4	5	6	7	8	9	10	11	12	13	14	15	16	17	18	19	20	21	22	23	24	25	26	27	28		17 - Presidents' Day - SCHOOL CLOSED							
S	M	T	W	Th	F	S																																																																																								
1	2	3	4	5	6	7																																																																																								
8	9	10	11	12	13	14																																																																																								
15	16	17	18	19	20	21																																																																																								
22	23	24	25	26	27	28																																																																																								
29	30																																																																																													
S	M	T	W	Th	F	S																																																																																								
						1																																																																																								
2	3	4	5	6	7	8																																																																																								
9	10	11	12	13	14	15																																																																																								
16	17	18	19	20	21	22																																																																																								
23	24	25	26	27	28																																																																																									
18/20			19/19																																																																																											
11 - Teacher In-Service - NO SCHOOL 14 - Columbus Day - SCHOOL CLOSED	OCTOBER 2024 <table border="1" style="width: 100%; border-collapse: collapse; text-align: center;"> <thead> <tr><th>S</th><th>M</th><th>T</th><th>W</th><th>Th</th><th>F</th><th>S</th></tr> </thead> <tbody> <tr><td></td><td></td><td>1</td><td>2</td><td>3</td><td>4</td><td>5</td></tr> <tr><td>6</td><td>7</td><td>8</td><td>9</td><td>10</td><td>11</td><td>12</td></tr> <tr><td>13</td><td>14</td><td>15</td><td>16</td><td>17</td><td>18</td><td>19</td></tr> <tr><td>20</td><td>21</td><td>22</td><td>23</td><td>24</td><td>25</td><td>26</td></tr> <tr><td>27</td><td>28</td><td>29</td><td>30</td><td>31</td><td></td><td></td></tr> </tbody> </table>	S	M	T	W	Th	F	S			1	2	3	4	5	6	7	8	9	10	11	12	13	14	15	16	17	18	19	20	21	22	23	24	25	26	27	28	29	30	31			MARCH 2025 <table border="1" style="width: 100%; border-collapse: collapse; text-align: center;"> <thead> <tr><th>S</th><th>M</th><th>T</th><th>W</th><th>Th</th><th>F</th><th>S</th></tr> </thead> <tbody> <tr><td></td><td></td><td></td><td></td><td></td><td></td><td>1</td></tr> <tr><td>2</td><td>3</td><td>4</td><td>5</td><td>6</td><td>7</td><td>8</td></tr> <tr><td>9</td><td>10</td><td>11</td><td>12</td><td>13</td><td>14</td><td>15</td></tr> <tr><td>16</td><td>17</td><td>18</td><td>19</td><td>20</td><td>21</td><td>22</td></tr> <tr><td>23</td><td>24</td><td>25</td><td>26</td><td>27</td><td>28</td><td>29</td></tr> <tr><td>30</td><td>31</td><td></td><td></td><td></td><td></td><td></td></tr> </tbody> </table>	S	M	T	W	Th	F	S							1	2	3	4	5	6	7	8	9	10	11	12	13	14	15	16	17	18	19	20	21	22	23	24	25	26	27	28	29	30	31						13 - Conferences - SINGLE SESSION 13 - Conferences - afternoon & evening 14 - Teacher In-Service - NO SCHOOL
S	M	T	W	Th	F	S																																																																																								
		1	2	3	4	5																																																																																								
6	7	8	9	10	11	12																																																																																								
13	14	15	16	17	18	19																																																																																								
20	21	22	23	24	25	26																																																																																								
27	28	29	30	31																																																																																										
S	M	T	W	Th	F	S																																																																																								
						1																																																																																								
2	3	4	5	6	7	8																																																																																								
9	10	11	12	13	14	15																																																																																								
16	17	18	19	20	21	22																																																																																								
23	24	25	26	27	28	29																																																																																								
30	31																																																																																													
21/22			20/21																																																																																											
7, 8 - NJEA Convention - SCHOOL CLOSED 22 - SINGLE SESSION 25, 26 - Conferences SINGLE SESSION 27 - SINGLE SESSION 28, 29 - Thanksgiving Break - SCHOOL CLOSED	NOVEMBER 2024 <table border="1" style="width: 100%; border-collapse: collapse; text-align: center;"> <thead> <tr><th>S</th><th>M</th><th>T</th><th>W</th><th>Th</th><th>F</th><th>S</th></tr> </thead> <tbody> <tr><td></td><td></td><td></td><td></td><td></td><td>1</td><td>2</td></tr> <tr><td>3</td><td>4</td><td>5</td><td>6</td><td>7</td><td>8</td><td>9</td></tr> <tr><td>10</td><td>11</td><td>12</td><td>13</td><td>14</td><td>15</td><td>16</td></tr> <tr><td>17</td><td>18</td><td>19</td><td>20</td><td>21</td><td>22</td><td>23</td></tr> <tr><td>24</td><td>25</td><td>26</td><td>27</td><td>28</td><td>29</td><td>30</td></tr> </tbody> </table>	S	M	T	W	Th	F	S						1	2	3	4	5	6	7	8	9	10	11	12	13	14	15	16	17	18	19	20	21	22	23	24	25	26	27	28	29	30	APRIL 2025 <table border="1" style="width: 100%; border-collapse: collapse; text-align: center;"> <thead> <tr><th>S</th><th>M</th><th>T</th><th>W</th><th>Th</th><th>F</th><th>S</th></tr> </thead> <tbody> <tr><td></td><td></td><td>1</td><td>2</td><td>3</td><td>4</td><td>5</td></tr> <tr><td>6</td><td>7</td><td>8</td><td>9</td><td>10</td><td>11</td><td>12</td></tr> <tr><td>13</td><td>14</td><td>15</td><td>16</td><td>17</td><td>18</td><td>19</td></tr> <tr><td>20</td><td>21</td><td>22</td><td>23</td><td>24</td><td>25</td><td>26</td></tr> <tr><td>27</td><td>28</td><td>29</td><td>30</td><td></td><td></td><td></td></tr> </tbody> </table>	S	M	T	W	Th	F	S			1	2	3	4	5	6	7	8	9	10	11	12	13	14	15	16	17	18	19	20	21	22	23	24	25	26	27	28	29	30				17 - SINGLE SESSION 18-25 - SPRING BREAK - SCHOOL CLOSED							
S	M	T	W	Th	F	S																																																																																								
					1	2																																																																																								
3	4	5	6	7	8	9																																																																																								
10	11	12	13	14	15	16																																																																																								
17	18	19	20	21	22	23																																																																																								
24	25	26	27	28	29	30																																																																																								
S	M	T	W	Th	F	S																																																																																								
		1	2	3	4	5																																																																																								
6	7	8	9	10	11	12																																																																																								
13	14	15	16	17	18	19																																																																																								
20	21	22	23	24	25	26																																																																																								
27	28	29	30																																																																																											
17/17			16/16																																																																																											
20 - SINGLE SESSION 23 - 31 Winter Break - SCHOOL CLOSED	DECEMBER 2024 <table border="1" style="width: 100%; border-collapse: collapse; text-align: center;"> <thead> <tr><th>S</th><th>M</th><th>T</th><th>W</th><th>Th</th><th>F</th><th>S</th></tr> </thead> <tbody> <tr><td>1</td><td>2</td><td>3</td><td>4</td><td>5</td><td>6</td><td>7</td></tr> <tr><td>8</td><td>9</td><td>10</td><td>11</td><td>12</td><td>13</td><td>14</td></tr> <tr><td>15</td><td>16</td><td>17</td><td>18</td><td>19</td><td>20</td><td>21</td></tr> <tr><td>22</td><td>23</td><td>24</td><td>25</td><td>26</td><td>27</td><td>28</td></tr> <tr><td>29</td><td>30</td><td>31</td><td></td><td></td><td></td><td></td></tr> </tbody> </table>	S	M	T	W	Th	F	S	1	2	3	4	5	6	7	8	9	10	11	12	13	14	15	16	17	18	19	20	21	22	23	24	25	26	27	28	29	30	31					MAY 2025 <table border="1" style="width: 100%; border-collapse: collapse; text-align: center;"> <thead> <tr><th>S</th><th>M</th><th>T</th><th>W</th><th>Th</th><th>F</th><th>S</th></tr> </thead> <tbody> <tr><td></td><td></td><td></td><td></td><td>1</td><td>2</td><td>3</td></tr> <tr><td>4</td><td>5</td><td>6</td><td>7</td><td>8</td><td>9</td><td>10</td></tr> <tr><td>11</td><td>12</td><td>13</td><td>14</td><td>15</td><td>16</td><td>17</td></tr> <tr><td>18</td><td>19</td><td>20</td><td>21</td><td>22</td><td>23</td><td>24</td></tr> <tr><td>25</td><td>26</td><td>27</td><td>28</td><td>29</td><td>30</td><td>31</td></tr> </tbody> </table>	S	M	T	W	Th	F	S					1	2	3	4	5	6	7	8	9	10	11	12	13	14	15	16	17	18	19	20	21	22	23	24	25	26	27	28	29	30	31	26 - Memorial Day - SCHOOL CLOSED							
S	M	T	W	Th	F	S																																																																																								
1	2	3	4	5	6	7																																																																																								
8	9	10	11	12	13	14																																																																																								
15	16	17	18	19	20	21																																																																																								
22	23	24	25	26	27	28																																																																																								
29	30	31																																																																																												
S	M	T	W	Th	F	S																																																																																								
				1	2	3																																																																																								
4	5	6	7	8	9	10																																																																																								
11	12	13	14	15	16	17																																																																																								
18	19	20	21	22	23	24																																																																																								
25	26	27	28	29	30	31																																																																																								
15/15			21/21																																																																																											
1 - New Year's Day - SCHOOL CLOSED 20 - Martin Luther King Day - SCHOOL CLOSED	JANUARY 2025 <table border="1" style="width: 100%; border-collapse: collapse; text-align: center;"> <thead> <tr><th>S</th><th>M</th><th>T</th><th>W</th><th>Th</th><th>F</th><th>S</th></tr> </thead> <tbody> <tr><td></td><td></td><td></td><td>1</td><td>2</td><td>3</td><td>4</td></tr> <tr><td>5</td><td>6</td><td>7</td><td>8</td><td>9</td><td>10</td><td>11</td></tr> <tr><td>12</td><td>13</td><td>14</td><td>15</td><td>16</td><td>17</td><td>18</td></tr> <tr><td>19</td><td>20</td><td>21</td><td>22</td><td>23</td><td>24</td><td>25</td></tr> <tr><td>26</td><td>27</td><td>28</td><td>29</td><td>30</td><td>31</td><td></td></tr> </tbody> </table>	S	M	T	W	Th	F	S				1	2	3	4	5	6	7	8	9	10	11	12	13	14	15	16	17	18	19	20	21	22	23	24	25	26	27	28	29	30	31		JUNE 2025 <table border="1" style="width: 100%; border-collapse: collapse; text-align: center;"> <thead> <tr><th>S</th><th>M</th><th>T</th><th>W</th><th>Th</th><th>F</th><th>S</th></tr> </thead> <tbody> <tr><td>1</td><td>2</td><td>3</td><td>4</td><td>5</td><td>6</td><td>7</td></tr> <tr><td>8</td><td>9</td><td>10</td><td>11</td><td>12</td><td>13</td><td>14</td></tr> <tr><td>15</td><td>16</td><td>17</td><td>18</td><td>19</td><td>20</td><td>21</td></tr> <tr><td>22</td><td>23</td><td>24</td><td>25</td><td>26</td><td>27</td><td>28</td></tr> <tr><td>29</td><td>30</td><td></td><td></td><td></td><td></td><td></td></tr> </tbody> </table>	S	M	T	W	Th	F	S	1	2	3	4	5	6	7	8	9	10	11	12	13	14	15	16	17	18	19	20	21	22	23	24	25	26	27	28	29	30						17-20 - SINGLE SESSION 20 - Tentative Last Day of School 17 - Tentative Graduation 19 - Juneteenth							
S	M	T	W	Th	F	S																																																																																								
			1	2	3	4																																																																																								
5	6	7	8	9	10	11																																																																																								
12	13	14	15	16	17	18																																																																																								
19	20	21	22	23	24	25																																																																																								
26	27	28	29	30	31																																																																																									
S	M	T	W	Th	F	S																																																																																								
1	2	3	4	5	6	7																																																																																								
8	9	10	11	12	13	14																																																																																								
15	16	17	18	19	20	21																																																																																								
22	23	24	25	26	27	28																																																																																								
29	30																																																																																													
21/21			12/12																																																																																											
KEY: SCHOOL CLOSED SINGLE SESSION (12:50) TEACHER IN-SERVICE NO SCHOOL TENTATIVE LAST DAY OF SCHOOL	END OF MARKING PERIODS MP1 - 11/12/2024 MP2 - 01/24/2025 MP3 - 03/31/2025 MP4 - 06/11/2025	REPORT CARDS DISTRIBUTED MP1 - 11/19/2024 MP2 - 01/31/2025 MP3 - 04/07/2025 MP4 - 06/17/2025	*Last day of school may be adjusted to reflect 180 student days. Additional days will be added or removed from the calendar in the event of emergency closings. BOE Approved: February 20, 2025																																																																																											

Updated: 2/25/2025 5:59 PM

Parent/Teacher Conferences:
November 25 & 26, 2024
March 13

Weymouth Township School District

2025-2026

PRESCHOOL

Registration Now Open

Join us on March 5th at 6:30PM at the school to register your child for the 2025-2026 school year

- ✓ 3 & 4 year old Students
- ✓ Full Day Program
- ✓ Must turn 3 by October 1st
- ✓ NJ Approved Curriculum
- ✓ Child-Centered Play

SCAN ME



For registration paperwork

For more information, call 609-476-2412



Read Across America Days

Monday, March 3, thru Friday, March 7, 2025

MONDAY

Cat in the Hat Day

Wear your favorite hat.

D.E.A.R. (Drop Everything And Read with Milk and Cookies from the HSA)

TUESDAY

Fox in Socks Day

Wear mismatched or crazy, silly socks.

WEDNESDAY

I Can Read With My Eyes Shut Day

Wear a shirt you can read: words, phrases, or quotes.

Literacy Night Tonight!! 6:00-7:30 PM

THURSDAY

If I Ran the Zoo... Day

Wear animal print or a shirt with an animal on it.

FRIDAY

And To Think I Saw It On Mulberry Street Day

Vocabulary Parade at 2:00 pm in the parking lot. Families Welcome!



The S'more you read, the smarter you'll be

Please be our guests for Weymouth's 3rd
Annual Literacy Night

Wednesday, March 5, 2025

6:00 PM- 7:30 PM



Join us for a night of fun
*Campfire-stories, family-games, and
the Scholastic Book Fair.*

Snacks will be provided.

Complimentary activity book for all students who attend.

Scholastic Book Fair managed by
Weymouth HSA.

Please scan QR code to register.

or email Kmerusi@weymouthtsd.org

Smorrison@weymouthtsd.org



This event is sponsored by the Weymouth Township Education
Association.



Dear Families,

Get ready—the Scholastic Book Fair is coming to our school! This is a great opportunity to connect with your child over the thrill of bringing home new books to dive into again and again. Studies show that kids read more when they choose books for themselves. A love of independent reading boosts academic success, plus children who read more frequently also report improved mental health¹.

Here's everything you need to know about the Book Fair:

Dates:

Location:

Family Event schedule and location:

There's even more info on our school's Book Fair homepage:

While you're there, set up a Book Fair eWallet, the digital payment account that allows your child to shop for books at the Fair without cash. Then share your eWallet link so friends and extended family can add funds.

When you fund an eWallet, you'll have the opportunity to contribute to a giving initiative called Share the Fair™. Your contributions directly support our students who need help buying books from the Fair.

Many of us still remember the rush of finding the perfect book at a Scholastic Book Fair. I hope you'll join your child at our school's Fair and share a reading experience they'll remember forever.

Happy reading,

Principal

PS: Need one more reason to visit the Book Fair? Every purchase at the Fair benefits our school!

SCHOLASTIC, SHARE THE FAIR and any associated logos are trademarks and/or registered trademarks of Scholastic Inc. All rights reserved.
© 2025 Scholastic Inc. All rights reserved. S25

¹ "The Mental Health Benefits of Literacy." *Psychology Today*, May 2023.

WACYL

SOFTBALL+TEEBALL

REGISTRATION

MARCH 1ST TO 15TH

Boys and Girls All Play

Ages 4 to 13

Plays Mid-April to June

Sponsors + Volunteers

needed

Go to
WACYL.com for
more info

COST
\$75





POLICE ACTIVITIES LEAGUE
of Atlantic County and Egg Harbor Township
2542 Ridge Ave, EHT



EVENTS AT THE CROSSPLEX

SPRING LEAGUES & PROGRAMS

NFL FLAG FOOTBALL

Ages 5 to 13, co-ed
Season: April 1 to June 1
Games on Sundays
Registration closes March 15

FIELD HOCKEY PROGRAM

Ages 11 to 14
Season: March 19 to April 23
Sessions on Wednesdays
Registration closes March 7

TINY TROTTERS RUNNING CLUB

Ages: 3 to 6
Season: April 3 to April 24
Sessions on Thursdays
Registration closes March 21

ADULT DODGEBALL LEAGUE

18+ Division & 30+ Division
Season: April 10 to May 15
Games on Thursdays
Registration closes March 28

VOLLEYBALL PROGRAM

Ages: 8 to 15. co-ed
Season: June 4 to July 9
Sessions on Wednesdays
Registration closes May 23

YOUTH SOCCER SKILLS PROGRAM

Ages 5 to 14, co-ed
Season: April 14 to June 9
Sessions on Mondays
Registration closes May 1

3V3 SOCCER TOURNAMENT

Divisions: U10, U12, U14 all co-ed
On President's Day, Monday Feb. 17
Registration closes February 10

SOCCER DEVELOPMENT CLINICS

Jr. Strikers (U8)

Clinic on March 8, 9am-12pm
Registration closes February 28

Rising Stars (U10)

Clinic on March 15, 9am-12pm
Registration closes March 7

Elite Soccer (U12/U14)









Clinic on April 12, 9am-12pm
Registration closes April 4

Need a place to practice or host a clinic? Rent our field today!
Email Crossplex@ehtpal.org for more info.

Crossplex@ehtpal.org
(609) 645-8413



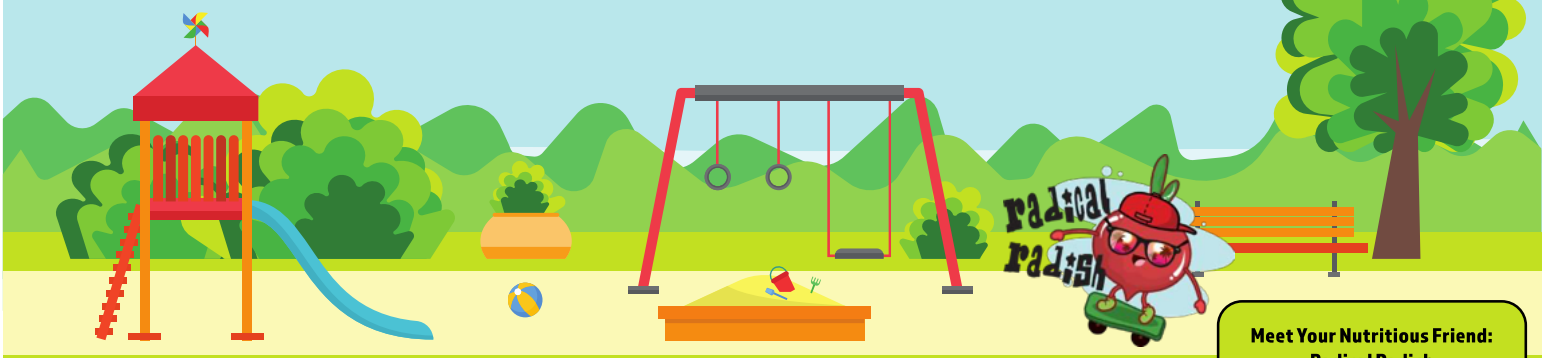
Scan to register or visit
ehtpal.org/crossplex

Symptoms of COVID-19	Strep Throat	Common Cold	Flu	Asthma	Seasonal Allergies
FEVER 	✓		✓		
COUGH 		✓	✓	✓	✓
SORE THROAT 	✓	✓	✓		✓
SHORTNESS OF BREATH 				✓	
FATIGUE 		✓	✓	✓	✓
DIARRHEA OR VOMITING 	✓		✓		
RUNNY NOSE 		✓	✓		✓
BODY/ MUSCLE ACHES 	✓	✓	✓		

✓ Symptom of illness



cdc.gov/coronavirus



**Meet Your Nutritious Friend:
Radical Radish**

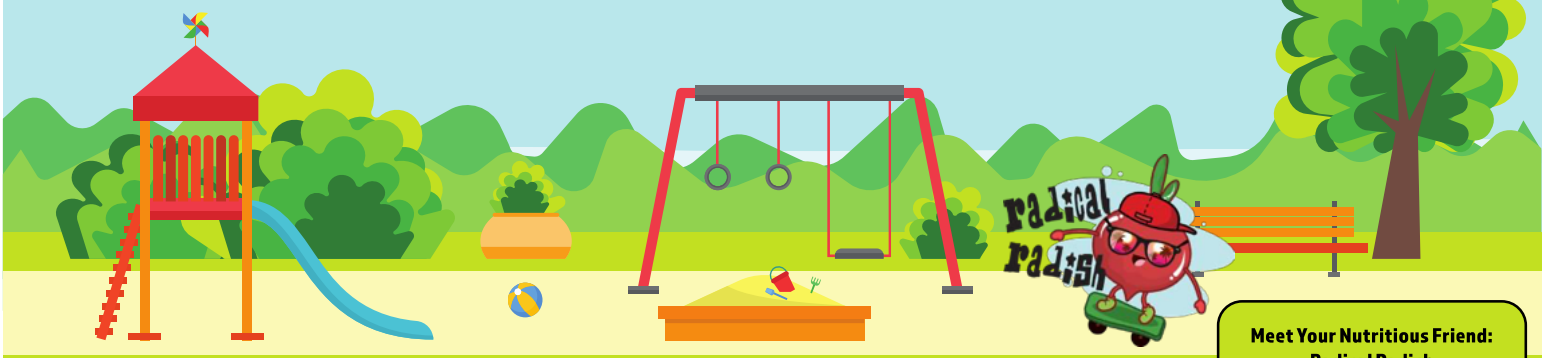
Monday	Tuesday	Wednesday	Thursday	Friday	Offered Daily
3 Cinnamon Toast Crunch Fruit 1% White Milk	4 Maple Waffles Fruit 1% White Milk	5 Cinnamon Chex Fruit 1% White Milk	6 Warm Muffin Fruit 1% White Milk	7 Kix Cereal Fruit 1% White Milk	<p>What is a Meal? Pre-K students are served the three following components for school breakfast.</p> <ul style="list-style-type: none"> - Whole Grain - Fresh Fruit or Cupped - 1% White Milk <p>Whole Grain Cereals Cinnamon Toast Crunch, Cinnamon Chex, Kix</p>
10 Cinnamon Toast Crunch Fruit 1% White Milk	11 Maple Waffles Fruit 1% White Milk	12 Cinnamon Chex Fruit 1% White Milk	13 Warm Muffin Fruit 1% White Milk	14 Kix Cereal Fruit 1% White Milk	
17 Cinnamon Toast Crunch Fruit 1% White Milk	18 Maple Waffles Fruit 1% White Milk	19 Cinnamon Chex Fruit 1% White Milk	20 Warm Muffin Fruit 1% White Milk	21 Kix Cereal Fruit 1% White Milk	
24 Cinnamon Toast Crunch Fruit 1% White Milk	25 Maple Waffles Fruit 1% White Milk	26 Cinnamon Chex Fruit 1% White Milk	27 Warm Muffin Fruit 1% White Milk	28 Kix Cereal Fruit 1% White Milk	
31 Cinnamon Toast Crunch Fruit 1% White Milk					

Rachel Adams, Food Service Director
609-476-2412 ext. 5
wey@nsfm.com

Meal Prices

Student Breakfast	\$1.75
Reduced Breakfast	\$0.00
Faculty Breakfast	\$2.25





**Meet Your Nutritious Friend:
Radical Radish**

Monday	Tuesday	Wednesday	Thursday	Friday	Offered Daily
<p>3</p> <p>Chicken Nuggets with Goldfish</p> <p>Corn Cupped or Fresh Fruit 1% White Milk</p>	<p>4</p> <p>Pancakes & Sausage</p> <p>Baked Beans Cupped or Fresh Fruit 1% White Milk</p>	<p>5</p> <p>Cheeseburger</p> <p>Celery & Carrots Sticks Cupped or Fresh Fruit 1% White Milk</p>	<p>6</p> <p>Fish Sticks with Goldfish</p> <p>Sweet Peas Cupped or Fresh Fruit 1% White Milk</p>	<p>7</p> <p>Pizza Dippers</p> <p>Veggie Patch Cupped or Fresh Fruit 1% White Milk</p>	<p>What is a Meal?</p> <p>Students must choose at least 3 of the 5 components available for the school lunch price.</p> <ul style="list-style-type: none"> - Choice of Whole Grain - Choice of Protein - Choice of Vegetable - Choice of Fruit - Choice of Milk <p>A minimum ½ cup serving of fruit or vegetable must accompany a reimbursable lunch.</p> <p>Choice of Vegetable</p> <p>Hot vegetable, leafy salad, composed bean salad, seasonal fresh vegetables</p> <p>Choice of Fruit</p> <p>Seasonal fresh fruits, canned fruit in light syrup, 100% fruit juice</p> <p>Choice of Milk</p> <p>1% white, fat-free white, chocolate, vanilla, and strawberry</p> <p>Daily Alternates</p> <p>Fresh Entree Salad of the Week Craveables Weekly Cold Cut Sandwiches or Wraps</p>
<p>10</p> <p>Chicken Nuggets with Goldfish</p> <p>Fresh Cucumber Slices Cupped or Fresh Fruit 1% White Milk</p>	<p>11</p> <p>Pancakes & Sausage</p> <p>Grape Tomatoes Cupped or Fresh Fruit 1% White Milk</p>	<p>12</p> <p>Cheeseburger</p> <p>Tater Tots Cupped or Fresh Fruit 1% White Milk</p>	<p>13</p> <p>Fish Sticks with Goldfish</p> <p>Corn Cupped or Fresh Fruit 1% White Milk</p>	<p>14</p> <p>Pizza Dippers</p> <p>Veggie Patch Cupped or Fresh Fruit 1% White Milk</p>	
<p>17</p> <p>Chicken Nuggets with Goldfish</p> <p>Fresh Cucumber Slices Cupped or Fresh Fruit 1% White Milk</p>	<p>18</p> <p>Pancakes & Sausage</p> <p>Grape Tomatoes Cupped or Fresh Fruit 1% White Milk</p>	<p>19</p> <p>Cheeseburger</p> <p>Fries Cupped or Fresh Fruit 1% White Milk</p>	<p>20</p> <p>Fish Sticks with Goldfish</p> <p>Fresh Broccoli Cupped or Fresh Fruit 1% White Milk</p>	<p>21</p> <p>Pizza Dippers</p> <p>Veggie Patch Cupped or Fresh Fruit 1% White Milk</p>	
<p>24</p> <p>Chicken Nuggets with Goldfish</p> <p>Corn Cupped or Fresh Fruit 1% White Milk</p>	<p>25</p> <p>Pancakes & Sausage</p> <p>Grape Tomatoes Cupped or Fresh Fruit 1% White Milk</p>	<p>26</p> <p>Cheeseburger</p> <p>Celery & Carrots Sticks Cupped or Fresh Fruit 1% White Milk</p>	<p>27</p> <p>Fish Sticks with Goldfish</p> <p>Green Beans Cupped or Fresh Fruit 1% White Milk</p>	<p>28</p> <p>Pizza Dippers</p> <p>Veggie Patch Cupped or Fresh Fruit 1% White Milk</p>	
<p>31</p> <p>Chicken Nuggets with Goldfish</p> <p>Fresh Cucumber Slices Cupped or Fresh Fruit 1% White Milk</p>					

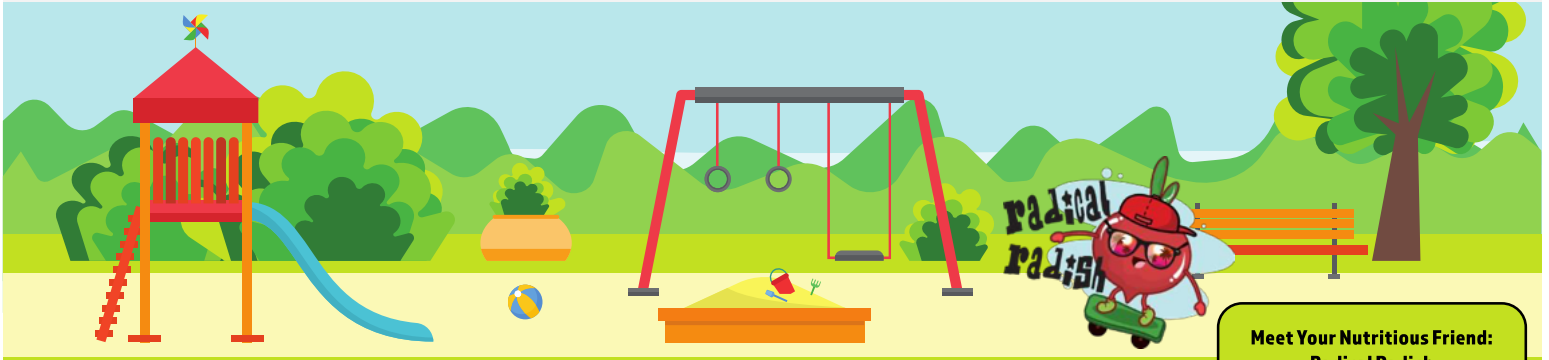
Rachel Adams, Food Service Director
609-476-2412 ext. 5
wey@nsfm.com

Meal Prices

Student Lunch	\$3.50
Reduced Lunch	\$0.00
Faculty Lunch	\$4.50



Menu subject to change due to product availability. This institution is an equal opportunity provider and employer.



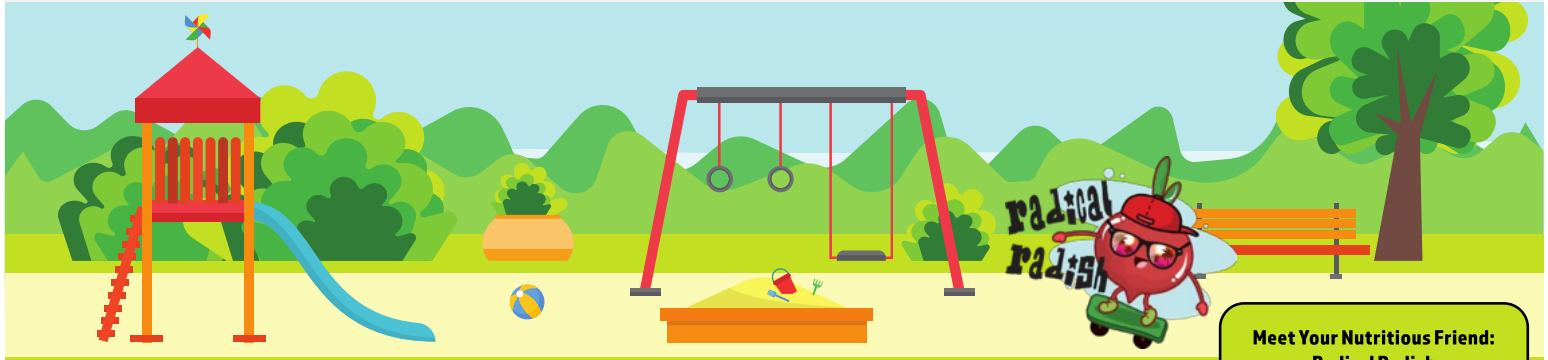
**Meet Your Nutritious Friend:
Radical Radish**

Monday	Tuesday	Wednesday	Thursday	Friday	Offered Daily
3 Cinnamon Toast Crunch Jump Start Fresh or Cupped Fruit Orange Juice	4 Maple Waffles Fresh or Cupped Fruit Orange Juice	5 Apple Donuts Fresh or Cupped Fruit Orange Juice	6 Warm Muffin Fresh or Cupped Fruit Orange Juice	7 Egg & Cheese Bagel Fresh or Cupped Fruit Orange Juice	<p>What is a Meal? Students must have at least 3 of the 4 components for the school breakfast price.</p> <ul style="list-style-type: none"> - Whole Grain - Protein - Fruit - Milk <p>A minimum ½ cup serving of fruit must accompany a reimbursable breakfast.</p> <p>Daily Alternate</p> <ul style="list-style-type: none"> -WG Pop-Tart & Cheese Stick -Yogurt & Graham Crackers -Oatmeal Bar & Cheese Stick -Cereal & Graham Crackers <p>Milk 1% white, FF White</p>
10 Cinnamon Toast Crunch Jump Start Fresh or Cupped Fruit Orange Juice	11 Maple Waffles Fresh or Cupped Fruit Orange Juice	12 Apple Donuts Fresh or Cupped Fruit Orange Juice	13 Warm Muffin Fresh or Cupped Fruit Orange Juice	14 Egg & Cheese Bagel Fresh or Cupped Fruit Orange Juice	
17 Cinnamon Toast Crunch Jump Start Fresh or Cupped Fruit Orange Juice	18 Maple Waffles Fresh or Cupped Fruit Orange Juice	19 Apple Donuts Fresh or Cupped Fruit Orange Juice	20 Warm Muffin Fresh or Cupped Fruit Orange Juice	21 Egg & Cheese Bagel Fresh or Cupped Fruit Orange Juice	
24 Cinnamon Toast Crunch Jump Start Fresh or Cupped Fruit Orange Juice	25 Maple Waffles Fresh or Cupped Fruit Orange Juice	26 Apple Donuts Fresh or Cupped Fruit Orange Juice	27 Warm Muffin Fresh or Cupped Fruit Orange Juice	28 Egg & Cheese Bagel Fresh or Cupped Fruit Orange Juice	
31 Cinnamon Toast Crunch Jump Start Fresh or Cupped Fruit Orange Juice					

Rachel Adams, Food Service Director
609-476-2412 ext. 5
wey@nsfm.com

Meal Prices	
Student Breakfast	\$1.75
Reduced Breakfast	\$0.00
Faculty Breakfast	\$2.25





**Meet Your Nutritious Friend:
Radical Radish**

Monday	Tuesday	Wednesday	Thursday	Friday	Offered Daily
<p>3</p> <p>Chicken & Cheese Quesadilla</p> <p>Ham & Cheese Sandwich</p> <p>FEATURED VEGGIES Corn Fresh Cucumber Slices</p>	<p>4</p> <p>Double Bacon Cheeseburger</p> <p>Chicken Bacon Ranch Wrap</p> <p>FEATURED VEGGIES Baked Beans Grape Tomatoes</p>	<p>5</p> <p>Chicken Parm. with Pasta</p> <p>Turkey & Cheese Sandwich</p> <p>FEATURED VEGGIES Green Beans Celery & Carrots Sticks</p>	<p>6</p> <p>Fish Sticks & Goldfish</p> <p>Chicken Caesar Wrap</p> <p>FEATURED VEGGIES Sweet Peas Fresh Broccoli</p>	<p>7</p> <p>Pizza Dippers</p> <p>Cheeseburger</p> <p>FEATURED VEGGIES Veggie Patch Side Salad</p>	<p>What is a Meal?</p> <p>Students must choose at least 3 of the 5 components available for the school lunch price.</p> <ul style="list-style-type: none"> - Choice of Whole Grain - Choice of Protein - Choice of Vegetable - Choice of Fruit - Choice of Milk <p>A minimum ½ cup serving of fruit or vegetable must accompany a reimbursable lunch.</p> <p>Salad of the Week</p> <p>All Salads are served with a Dinner Roll or Tortilla Chips</p> <p>Week-1 (Buffalo Chicken Salad)</p> <p>Week-2 (Taco Salad)</p> <p>Week-3 (Garden Salad with Yogurt)</p> <p>Week-4 (Asian Chicken Salad)</p> <p>Week-5 (Chicken Caesar Salad)</p> <p>Choice of Fruit</p> <p>Seasonal fresh fruits, canned fruit in light syrup, 100% fruit juice</p> <p>Choice of Milk</p> <p>1% white, chocolate, and strawberry</p> <p>Daily Alternates</p> <p>Uncrustable Meal with Cheese Stick and Goldfish</p>
<p>10</p> <p>Grilled Cheese</p> <p>Ham & Cheese Sandwich</p> <p>FEATURED VEGGIES Glazed Carrots Fresh Cucumber Slices</p>	<p>11</p> <p>Buffalo Chicken Dip with Tortilla Chips</p> <p>Chicken Bacon Ranch Wrap</p> <p>FEATURED VEGGIES Roasted Garbanzo Beans Grape Tomatoes</p>	<p>12</p> <p>Cheesy BBQ Pork Bowl</p> <p>Turkey & Cheese Sandwich</p> <p>FEATURED VEGGIES Tater Tots Celery & Carrots Sticks</p>	<p>13</p> <p>Taco Soup with Corn Chips</p> <p>Chicken Caesar Wrap</p> <p>FEATURED VEGGIES Corn Fresh Broccoli</p>	<p>14</p> <p>Stuffed Crust Pizza</p> <p>Cheeseburger</p> <p>FEATURED VEGGIES Veggie Patch Side Salad</p>	
<p>17</p> <p>Scrambled Eggs & Pancakes</p> <p>Ham & Cheese Sandwich</p> <p>FEATURED VEGGIES Dice d Potatoes Fresh Cucumber Slices</p>	<p>18</p> <p>Chicken Patty on a Bun</p> <p>Chicken Bacon Ranch Wrap</p> <p>FEATURED VEGGIES Baked Beans Grape Tomatoes</p>	<p>19</p> <p>Chicken Cheesesteak</p> <p>Turkey & Cheese Sandwich</p> <p>FEATURED VEGGIES Fries Celery & Carrots Sticks</p>	<p>20</p> <p>Asian Sesame Pork over Rice</p> <p>Chicken Caesar Wrap</p> <p>FEATURED VEGGIES Roasted Broccoli Fresh Broccoli</p>	<p>21</p> <p>Pizza Crunchers</p> <p>Cheeseburger</p> <p>FEATURED VEGGIES Veggie Patch Side Salad</p>	
<p>24</p> <p>Chicken Fajitas</p> <p>Ham & Cheese Sandwich</p> <p>FEATURED VEGGIES Corn Fresh Cucumber Slices</p>	<p>25</p> <p>White Chicken Chili with Tortilla Chips</p> <p>Chicken Bacon Ranch Wrap</p> <p>FEATURED VEGGIES Roasted Garbanzo Beans Grape Tomatoes</p>	<p>26</p> <p>Honey Baked Chicken with Cornbread</p> <p>Turkey & Cheese Sandwich</p> <p>FEATURED VEGGIES Glazed Carrots Celery & Carrots Sticks</p>	<p>27</p> <p>Pasta Bake</p> <p>Chicken Caesar Wrap</p> <p>FEATURED VEGGIES Green Beans Fresh Broccoli</p>	<p>28</p> <p>French Bread Pizza</p> <p>Cheeseburger</p> <p>FEATURED VEGGIES Veggie Patch Side Salad</p>	
<p>31</p> <p>Mac & Cheese</p> <p>Ham & Cheese Sandwich</p> <p>FEATURED VEGGIES Stewed Tomatoes Fresh Cucumber Slices</p>					

Rachel Adams, Food Service Director
609-476-2412 ext. 5
wey@nsfm.com

Meal Prices

Student Breakfast	\$3.50
Reduced Breakfast	\$0.00
Faculty Breakfast	\$4.50



Menu subject to change due to product availability. This institution is an equal opportunity provider and employer.