

# CURRICULUM GUIDE

## 2025-2026



### Table of Contents

Welcome To Bozeman High Schools BHS/GHS.....	1	Family & Consumer Sciences .....	25-26
Diploma Options & Distinctions.....	2-9	Health Enhancement.....	27-28
Fine Arts, Vocational & Flex Credits .....	10	Health Sciences. ....	29
General Elective Credits.....	11	Industrial, Career, and Technical Ed.....	30-31
Bridger Charter Academy.....	12	Math .....	32-34
NCAA Eligibility.....	13	Performing Arts: Music.....	35-37
Dual Credit Opportunities.....	14	Performing Arts: Theater.....	38
Advanced Placement.....	15	Science.....	39-41
Visual Art.....	16-18	Social Studies.....	42-44
Business Education .....	19-20	Specialized Programs .....	45-46
Engineering.....	21	World Languages.....	47-49
English .....	22-24		

**BOZEMAN HIGH SCHOOL**  
Bozeman, Montana

**GALLATIN HIGH SCHOOL**  
Bozeman, Montana





## **WELCOME TO BOZEMAN SCHOOL DISTRICT #7 HIGH SCHOOLS**

Our mission is to prepare all students to be ready for college, career, and life after high school by providing access to a meaningful course of study related to their graduation, developmental needs, and personal interests and goals.

The purpose of the Curriculum Guide is to inform and assist you throughout your high school years. The information in this guide applies to all Bozeman School District high schools (Bozeman, Gallatin, and Bridger Charter). Inside this guide you will find course requirements for different diploma options, descriptions of the different programs, course sequences for each department, and descriptions for each course. For the 2025-26 school year, all high schools will serve grades 9-12. All courses require a minimum number of students to run a class at a high school.

Registration and scheduling can sometimes feel confusing and overwhelming. This guide is designed to help you navigate your high school options, which cannot be done without the help of many people.

### **Students**

It is your responsibility to talk with your parents/guardians and teachers about the best courses for you. Carefully consider your commitments both in and out of school, graduation requirements, personal interests, study habits, and your future plans as you select classes each year. Do not be afraid to challenge yourself.

### **Parents/Guardians**

It is your responsibility to talk with your student(s) about their future plans, your expectations, and the workload required for each course. Carefully consider what you know about your student(s) and his or her capabilities as you help advise them to explore their interests.

### **Teachers and Counselors**

It is your responsibility to make the most accurate recommendations for each student based on their skills and interests. Teachers best understand the curriculum in their departments, and thus can recommend the best course in the sequence. Counselors are familiar with graduation requirements, grade level expectations and can ensure students are exploring options, challenging themselves as learners, and staying on track for graduation.

Together we hope to ensure each student has a schedule that meets his or her individual needs, graduation requirements, and personal interests. If you or your parents/guardians have questions throughout the process, please feel free to contact your counselor for additional information or clarification.

Thank you for your role in the scheduling process!

Dan Mills  
Principal, Bozeman High School &  
Bridger Charter Academy

Erica Schnee  
Principal, Gallatin High School



# HIGH SCHOOL DIPLOMA OPTIONS

<b>Bozeman School District</b> <b>Diploma</b> 23.0 Credits	
English	4.0 credits
English I (English I OR English GATE)	1.0 credit
English II (English II OR English II Honors)	1.0 credit
English III (English III OR English III Honors)	1.0 credit
English IV	0.5 credit
English Elective (College Prep Reading OR Exploration of Literature: Modern Fiction OR Exploration of Literature: Science Fiction and Fantasy OR College Prep Writing OR Creative Writing OR Applied Writing OR Introduction to Debate)	0.5 credit
Math	3.0 credits
Math	1.0 credit
Math	1.0 credit
Math	1.0 credit
Science	2.0 credit
Physical Science (Physical Science OR Physical Science GATE)	1.0 credit
Biology (Biology OR AP Biology)	1.0 credit
Social Studies	3.0 credits
World Geography (World Geography OR World Geography GATE)	1.0 credit
U.S. History (U.S. History OR AP U.S. History)	1.0 credit
U.S. Government (U.S. Government OR AP U.S. Government)	0.5 credit
Social Studies Elective (Economics OR AP Microeconomics OR Human Geography OR Philosophy OR Native American Studies OR AP Human Geography (1.0 credit))	0.5 credit
Career and Technical Education (CTE)	1.0 credit
Credit can be chosen from any of the following departments: Business; Engineering; Family and Consumer Science; Health Sciences; or Industrial, Career and Technical Education	
Fine Arts	1.0 credit
Credit can be chosen from any of the following departments: Art, Music, or Theater Production	
Health Enhancement	2.0 credits
Freshman Health Enhancement (Freshman Health Enhancement OR Freshman Sport & Fitness OR Freshman Personal Wellness)	1.0 credit
Sophomore Health Enhancement (Sophomore Health Enhancement OR Sophomore Sport & Fitness OR Sophomore Personal Wellness)	1.0 credit
Financial Literacy (2025-2026 SY)	0.5 credit
Financial Survival Economics AP Microeconomics	0.5 credit
Flex	1.0 credit
Credit can be chosen from any of the following departments: Fine Arts; Vocational; or World Languages	
General Electives	6.0 credits

<b>Bozeman School District</b> <b>Diploma with Distinctions</b> 25.0 Credits	
English	4.0 credits
English I (English I OR English GATE)	1.0 credit
English II (English II OR English II Honors)	1.0 credit
English III (English III OR English III Honors)	1.0 credit
English IV	0.5 credit
English Elective (College Prep Reading OR Exploration of Literature: Modern Fiction OR Exploration of Literature: Science Fiction and Fantasy OR College Prep Writing OR Creative Writing OR Applied Writing OR Introduction to Debate)	0.5 credit
Math	3.0 credits
Math	1.0 credit
Math	1.0 credit
Math	1.0 credit
Science	2.0 credit
Physical Science (Physical Science OR Physical Science GATE)	1.0 credit
Biology (Biology OR AP Biology)	1.0 credit
Social Studies	3.0 credits
World Geography (World Geography OR World Geography GATE)	1.0 credit
U.S. History (U.S. History OR AP U.S. History)	1.0 credit
U.S. Government (U.S. Government OR AP U.S. Government)	0.5 credit
Social Studies Elective (Economics OR AP Microeconomics OR Human Geography OR Philosophy OR Native American Studies OR AP Human Geography (1.0 credit))	0.5 credit
Career and Technical Education (CTE)	1.0 credit
Credit can be chosen from any of the following departments: Business; Engineering; Family and Consumer Science; Health Sciences; or Industrial, Career and Technical Education	
Fine Arts	1.0 credit
Credit can be chosen from any of the following departments: Art, Music, or Theater Production	
Health Enhancement	2.0 credits
Freshman Health Enhancement (Freshman Health Enhancement OR Freshman Sport & Fitness OR Freshman Personal Wellness)	1.0 credit
Sophomore Health Enhancement (Sophomore Health Enhancement OR Sophomore Sport & Fitness OR Sophomore Personal Wellness)	1.0 credit
Financial Literacy (2025-2026 SY)	0.5 credit
Financial Survival Economics AP Microeconomics	0.5 credit
Flex	1.0 credit
Credit can be chosen from any of the following departments: Fine Arts; Vocational; or World Languages	
Flex & General Electives	9.0 credits

**REMINDER:** Graduation requirements are NOT the same as college admission requirements. Please be sure to check the admission requirements for any colleges in which you are interested.



---

## Merit Distinction

The Merit Distinction recognizes students who have completed requirements in additional subject categories beyond the BSD7 diploma to honor students who embrace academic and intellectual risks in their choice of courses.

To apply for Merit Distinction, students must meet the following requirements:

1. Successful completion of at least three classes worth of Advanced Placement, Honors, and/or dual enrollment.
2. Earn a minimum of 25 credits meeting the requirements in the table below.
3. Show commitment to one or more school endorsed activities or clubs for two years. (Including organizations outside of the school)
4. Submit an application, including an unofficial transcript, which proves the student has met the requirements.

### Course Requirements

	<b>BSD Diploma</b>	<b>Merit Distinction</b>
English	4	4
Math	3	4
Social Studies	3	3
Science	2	3
Health Enhancement	2	2
Fine Arts	1	1
CTE	1	1
Flex (Art, CTE, WL)	1	1
World Language	N/A	2
General Electives	6	4
<b>Total Credits</b>	<b>23</b>	<b>25</b>

### Extra-curricular component:

Show commitment to one or more school endorsed activities or clubs for two years as indicated on distinction application.  
(May include organizations outside of the school)



---

---

## Career and Technical Education (CTE) Distinction

Career and Technical Education (CTE) distinction acknowledges graduating seniors that have completed a plan of study that emphasizes course completion within: BioMedical Sciences, Business Education, Family and Consumer Sciences, or Industrial Career & Technical Education.

To apply for CTE Distinction, students must meet the following requirements:

1. Successful completion of credits as outlined below.
2. Complete Community Involvement/ Citizenship/Active Involvement as outlined below.
3. Submit an application, including an unofficial transcript, which proves the student has met the requirements.

### Course Requirements

	<b>BSD Diploma</b>	<b>CTE Distinction</b>
English	4	4
Math	3	3
Social Studies	3	3
Science	2	2
Health Enhancement	2	2
Fine Arts	1	1
CTE	1	4
Flex (Art, CTE, WL)	1	1
Electives	6	5
<b>Total Credits</b>	<b>23</b>	<b>25</b>

### CTE Community Involvement/ Citizenship/Active Involvement:

- 30 Hours of involvement in meetings and CTSO (HOSA, DECA, FCCLA, ProStart, Skills USA, TSA) activities (Advisor signature verifying participation) OR
- CTSO State conference attendance (Advisor signature verifying participation) OR
- Capstone Project Completion TBD with teacher and signature verifying completion OR
- 30 hours relevant work experience, internship, apprenticeship, or volunteer hours within one of the four fields over high school career.



## Fine Arts Distinction

Fine Arts distinction acknowledges graduating seniors that have completed a plan of study that emphasizes course completion within: Dance, Drama, Music, Theater, and/or Visual Arts.

To apply for Fine Arts Distinction, students must meet the following requirements:

1. Successful completion of credits as outlined below.
2. Complete Extracurricular component as outlined below.
3. Complete Exhibition component as outlined below.
4. Submit an application, including an unofficial transcript, which proves the student has met the requirements.

### Course Requirements

	BSD Diploma	Fine Arts Distinction
English	4	4
Math	3	3
Social Studies	3	3
Science	2	2
Health Enhancement	2	2
Fine Arts	1	4
CTE	1	1
Flex (Art, CTE, WL)	1	1
Electives	6	5
<b>Total Credits</b>	<b>23</b>	<b>25</b>

### Extra-curricular component:

Service/engagement for two total combined years in any combination of the following:

- Art Club
- Metals Guild
- Studio Assistant for Credit
- Special project as determined
- Music - satisfactory participation in performances required by coursework (in 2, year-long ensembles)
- Drama club

### Exhibition component:

Portfolio or performance participation may be fulfilled through one or more of the following:

- Studio art portfolio submission demonstrating an engagement in an area of concentration.
- Participation in the Senior Art Show
- Participation in at least two fall productions as a cast or crew member.
- Jazz Band, Jazz Choir, Pep Band, Marching Band, Kamerata, or Bozeman Night Live



---

## Humanities Distinction

The Humanities Endorsement recognizes students who are particularly successful in one or more areas of the humanities. A student with a Humanities Endorsement can either choose to focus on one discipline or take classes in a variety of disciplines. To be eligible for this distinction, a student must complete the requirements outlined below.

To apply for Humanities Distinction, students must meet the following requirements:

1. Successful completion of any four credits of any combination of Social Studies, English, or World Language courses beyond those required for graduation, see list below.
2. Complete Extra-curricular component as outlined below.
3. Submit an application, including an unofficial transcript, which proves the student has met the requirements.

### Course Requirements

	BSD Diploma	Humanities Distinction
English	4	4
Math	3	3
Social Studies	3	3
Science	2	2
Health Enhancement	2	2
Fine Arts	1	1
CTE	1	1
Flex (Art, CTE, WL)	1	1
General Electives	6	4
Humanities Electives	N/A	4 (from list below)
<b>Total Credits</b>	<b>23</b>	<b>25</b>

Extra-curricular component:

Active participation in at least 2 years of Humanities related clubs and/or 2 foreign exchange activities is required. (Active participation might include 20 hours of meeting attendance per year, or participation in a state competition, etc). The following are a list of options:

- Student Council
- Model United Nations
- Youth Legislature
- Project X<sup>2</sup>+
- World Quest
- Human Rights Club
- Any World Language Club
- Speech & Debate
- School literary magazine
- Hosting foreign exchange student for 3-9 months
- Study abroad with a BHS/GHS sponsored trip or 3-9 months independently

**Course options:**

English	Social Studies	World Languages
School Newspaper Yearbook Production College Prep Reading College Prep Writing Science Fiction and Fantasy Creative Writing Modern Fiction Fiction and Film Introduction to Debate Speech / Debate II Theater Production*	World History AP World History Native American Studies Philosophy Psychology AP Psychology Economics AP Microeconomics Law and Justice Human Geography AP Human Geography	Spanish I-IV, AP German I-IV, AP French I-IV, AP

\*As this class may also count toward a Fine Arts endorsement, other electives should be taken, it should not count towards both endorsements.





## STEM Distinction

STEM distinction acknowledges graduating seniors that have completed a plan of study that emphasizes course completion within: Science, Technology (Computer Science), Engineering, Math, and/or Health Sciences.

To apply for Merit Distinction, students must meet the following requirements:

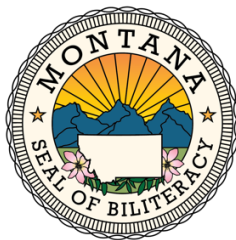
1. Earn a minimum of 25 credits meeting the requirements outlined below.
2. Submit an application, including an unofficial transcript, which proves the student has met the requirements.

### Course Requirements:

	BSD Diploma	STEM Distinction
English	4	4
Math	3	4
Social Studies	3	3
Science	2	3
Health Enhancement	2	2
Fine Arts	1	1
CTE	1	1
Flex (Art, CTE, WL)	1	1
General Electives	6	4
STEM Electives	N/A	2 additional credits from list below
<b>Total Credits</b>	<b>23</b>	<b>25</b>

### Course Options:

Science	Technology	Engineering	Math	Health Sciences
Chemistry or AP Chemistry	Coding I (.5)	Engineering I	AP Stats	Biomed I
Physics or AP Physics	Coding II (.5)	Engineering II	Precalculus	Biomed II
AP Environmental Science	Cybersecurity (.5)		Calculus	Biomed III
	Coding IV (.5)			Biomed IV



---

## Montana Seal of Biliteracy

*Language isn't a "credit to check off for graduation," but a skill that "checks you in" to future opportunities.*  
~Linda Egnatz

### What is the Montana Seal of Biliteracy?

The Seal of Biliteracy is awarded to graduating high school seniors who have demonstrated Intermediate or Advanced language proficiency in English and at least one other language. The Seal was created to encourage students with a first language other than English to maintain and/or develop their home language while learning English and challenge students whose first language is English to attain proficiency in another language. The Montana Seal of Biliteracy provides colleges and employers with an additional method to recognize applicants' linguistic skills.

### How do I get the Montana Seal of Biliteracy?

- Build your language skills throughout high school.
- Fulfill application requirements for English and an additional language.
  - Complete English graduation requirements or earn an ACT ELA Composite score of 20 or higher.
  - Participate in testing offered at your high school. \*
- Submit your application your senior year.

<https://bpe.mt.gov/Seal-of-Biliteracy/Application---Native-Languages.pdf>

\*Bozeman Public Schools will provide the opportunity for 9-12 multilingual students to take the Stamp 4S test to demonstrate proficiency in a language other than English in order to qualify for the Montana Seal of Biliteracy. For information about requirements and additional ways to qualify for the Seal, please see the Montana Board of Public Education's website:

<https://bpe.mt.gov/Seal-of-Biliteracy/Seal-of-Biliteracy>

### How will I be recognized for earning the Montana Seal of Biliteracy?

Graduating high school seniors will receive an official Montana Seal of Biliteracy on their diploma as well as a letter and certificate of completion from the Montana Board of Public Education. Additionally, Bozeman Public Schools hosts an award ceremony and honors students with cords at graduation.

## FINE ARTS, FLEX, CTE, FINANCIAL LIT ELECTIVES COURSES

*\*Availability of these courses is based on student requests*

<b>FINE ARTS (ART) 1.0 REQUIRED</b>	
ADV. STUDIO/AP STUDIO ART	1
AP MUSIC THEORY	1
ART FOUNDATIONS (BCA)	0.5
ART FOUNDATIONS	0.5
ART HISTORY SEMINAR	0.5
CERAMICS I	0.5
CERAMICS II	0.5
CHAMBER CHOIR	1
CONCERT BAND	1
CONCERT ORCHESTRA	1
DRAWING I	0.5
DRAWING-ADV	0.5
GRAPHIC DESIGN I	0.5
GRAPHIC DESIGN II	0.5
GUITAR I	1
GUITAR II	1
JAZZ BAND I	1
JAZZ BAND II	1
JAZZ CHOIR	1
JEWELRY I	0.5
JEWELRY II	0.5
KAMERATA	1
PAINTING I	0.5
PAINTING II	0.5
PHILHARMONIC ORCH	1
SCULPTURE	0.5
STUDIO ASSISTANT	0.5
SYMPHONY BAND	1
SYMPHONY ORCHESTRA	1
TENOR/BASS CHOIR	1
THEATER PROD I	0.5
THEATER PROD II	0.5
THEATER PRODUCTION-ADV	0.5
TREBLE CHOIR	1
WIND ENSEMBLE (Band)	1

<b>FLEX (FLEX) 1.0 REQUIRED</b>	
ANY FINE ART (on left)	
<b>OR</b>	
ANY CTE (on right)	
<b>OR</b>	
FRENCH COURSES - All levels	1
GERMAN COURSES - All levels	1
SPANISH COURSES - All levels	1
SPANISH FOR HERITAGE LEARNERS	1
WORLD LANGUAGE PRACTICUM	0.5
INTRO TO DEBATE	0.5
SPEECH & DEBATE II	0.5

<b>FINANCIAL LITERACY 0.5 REQUIRED (for 2025-2026)</b>	
FINANCIAL SURVIVAL	0.5
ECONOMICS	0.5
AP MICROECONOMICS	0.5

<b>CAREER &amp; TECH ED (CTE) 1.0 REQUIRED</b>	
ACCOUNTING	1
ADV. CULINARY ARTS	1
ADV. PHOTO IMAGING	1
ADV. WOODWORKING	1
ARCHITECTURAL GRAPHICS	1
ARCHITECTURAL GRAPHICS II	1
AUTO TECH I-Personal Car Care	1
AUTO TECH II	1
BEGINNING WOODWORKING	1
BIOMED I PRINCIPLES	1
BIOMED II HUMAN BODY SYS	1
BIOMED III INTERVENTIONS	1
BIOMED IV INNOVATIONS	1
CAREER PLANNING	0.5
CHILD DEVELOPMENT I	0.5
COLLEGE WELDING THEORY	1
COMPUTER CODING (I-IV)	0.5
CONSTRUCTION TRADES: CARPENTRY	1.0
CULINARY ARTS I	0.5
CULINARY ARTS II	0.5
EARLY CHILDCARE & EDUCATION	0.5
ENG I-DESIGN & PROBLEM SOLVING	1
ENG II-ADVANCED ENGINEERING	1
ENTREPRENEURSHIP	0.5
BUSINESS MANAGEMENT	0.5
MULTIMEDIA	0.5
SPORT & EVENT MARKETING	0.5
TRAVEL & TOURISM	0.5
FINANCIAL SURVIVAL	0.5
INTRO TO FASHION DESIGN	0.5
INTRO TO INTERIOR DESIGN	0.5
INTRO TO METALS	1.0
KEYBOARDING	0.5
MEDIA & MARKETING: SCHOOL TV	1
METAL FABRICATION	1
PHOTO IMAGING	1

## ADDITIONAL GENERAL ELECTIVES COURSES

COURSE NAME AND CREDIT			
PSYCHOLOGY	0.5	ANATOMY & PHYSIOLOGY	1
AP PSYCHOLOGY	1	ASTRONOMY	0.5
STRENGTH TRAINING - FALL	0.5	GEOLOGY	0.5
STRENGTH TRAINING - SPRING	0.5	AP ENVIRONMENTAL SCIENCE	1
LIFETIME ACTIVITIES - FALL	0.5	LAW & JUSTICE	0.5
LIFETIME ACTIVITIES - SPRING	0.5	WORK EXPERIENCE	0.5
YEARBOOK PROD	1	PEER TUTOR – see Counselor	0.5
SCHOOL NEWSPAPER	1		
FICTION AND FILM	0.5		
WILDLIFE BIOLOGY - FALL	0.5		
WILDLIFE BIOLOGY - SPRING	0.5		
		STUDY HALL	0
		GUIDED STUDY HALL	0
		TEACHER'S AIDE	0

## BRIDGER CHARTER ACADEMY

Bridger Charter Academy (BCA) is a school located within Bozeman High School. The charter school offers core course credit through proficiency-based instruction on the same BSD7-approved standards in a smaller learning community. BCA is not an online program. Students attend both BCA and BHS to meet graduation course requirements.

Bridger Charter Academy has the same diploma requirements and distinction options as BHS and GHS. The high school diploma is issued from Bozeman High School. A high school transcript for a student attending BCA and BHS will be issued from BHS. Only core courses are offered in BCA, all elective courses are completed through BHS and necessary to meet graduation requirements. Bridger Charter Academy requires that students participate in mentoring and community activities which focus on students' acquisition of skills to support whole student education. For more detailed information on BCA, please visit <https://bca.bsd7.org/>.

### BCA CORE COURSE OFFERINGS

ENGLISH	MATH	SCIENCE	SOCIAL STUDIES	OTHER
English I (1.0) English II (1.0) Eng III Combo (1.0) English IV (0.5) Science Fiction & Fantasy (0.5)	Algebra I (1.0) Geometry (1.0) Algebra II (1.0)	GeoPhysical Science (1.0) Biology (1.0)	World Geography (1.0) US History Combo (1.0) Government (0.5) Human Geography (0.5)	Health Enhancement (1.0) Art Foundations (0.5)

## NCAA Eligibility

The NCAA eligibility rules require careful planning by the student-athlete to ensure that the required numbers of core courses are completed.

**Student-athletes should register with the NCAA Eligibility Center in his/her junior year of high school.**

Please go to the NCAA Eligibility Center website, <https://web3.ncaa.org/ecwr3>, to find detailed information about eligibility requirements. Below is a list of approved courses.

Initial NCAA eligibility will be evaluated under a rule that requires 16 core courses.

4 years of English

3 years of mathematics (Algebra I or higher)

2 years of natural/physical science

1 year of additional English, math, or natural/physical science

2 years of social science

4 years of additional courses from any area above, foreign (world) language, or no-doctrinal religion/philosophy

*\*In addition, NCAA Division I requires 10 core courses to be completed prior to the seventh semester (seven of the ten core courses must be a combination of English, Math, or Natural/Physical Science that meet the core course requirements. These ten courses become "locked in" at the 7th semester and cannot be retaken for grade improvement. Students may not use any computer science courses to meet the core course requirements.*

ENGLISH	MATHEMATICS	NATURAL/PHYSICAL SCIENCE	SOCIAL SCIENCE
Argumentative Writing & Debate College Prep Reading College Prep Writing Contemporary Literature Creative Writing English III/Amer Studies Combo EngII/Combo EngII/AP World Hist Combo English 1 English 1 GATE English 2 English II Honors Combo English 3 English III Honors Combo English 4 English/AP Science Fiction/Fantasy Speech 1* Introduction to Debate* Speech/Debate II* *1 credit max of Speech/Debate Courses	Advanced Math Algebra 1 Algebra 2 AP Statistics Calculus/AP Geometry Geometry GATE Pre-Calculus Statistics	Anatomy and Physiology Astronomy Biology Biology/AP BioMed1-Princ/Biomed Sci BioMed2-Human Body Systems BioMed3-Medical Interventions BioMed4-Biomedical Innovations Chemistry 1 Chemistry/AP Geology GeoPhysical Science GeoPhysical Science GATE Physics Physics/AP Science and the Environment Wildlife Biology	AP World History Combo AP Human Geography AP Microeconomics AP US History Combo Economics European History/AP Human Geography Native American Studies Philosophy Psychology I Psychology 2 Psychology/AP US Government US Government/AP US History US History Combo US History/AP World Geography World Geography GATE World History World History Combo World St/Eng II Combo

### ADDITIONAL CORE COURSES (in addition to those listed above)

French 1	German 1	Spanish 1
French 2	German 2	Spanish 2
French 3	German 3	Spanish 3
French 4	German 4	Spanish 4
French/AP	German/AP	Spanish/AP

## DUAL ENROLLMENT

Through the partnership between BSD#7 and MSU-Gallatin College, students have the opportunity to take dual credit courses. These college-level courses are taught at the high school by either a high school instructor, a college instructor, or through team teaching. Dual enrollment courses count toward high school graduation and qualify for college credit.

### Course offerings currently include:

BHS/GHS Course:	Credit received for Gallatin College:
Accounting	ACTG 101 Accounting Procedures I
Advanced Math	M105Q Contemporary Mathematics
Anatomy & Physiology	BIOH112 & BIOH113 Human Form and Function
BioMed 4-BioMedical Innovations	AHMS144 Medical Terminology
Business Management	BMGT235 Management
College Welding	WLDG110-WLD111 Welding Theory I & Practical
Computer Coding II	CSCI107 Joy & Beauty of Computing
Entrepreneurship	BMGT 210 Small Business Entrepreneurship
Interior Design	IDSN101 Intro to Design
Advanced Culinary Arts	CULA 105 Food Safety & Sanitation
Spanish IV/AP Spanish	SPNS 101 Elementary Spanish I/ SPNS 102D Elementary Spanish II
French IV/AP French	FRCH 101 Elementary French I / FRCH 102D Elementary French II
German IV/AP German	GRMN 101 Elementary German I / GRMN 102D Elementary German II
Spanish for Heritage Learners	SPNS 201D Intermediate Spanish I
Construction Trades: Carpentry	CSTN 105 Introduction to Woodworking

*Note: Offerings & fees may change, please contact Gallatin College Dual Enrollment Program (info below)*

### How much do dual credit classes cost?

Students are eligible for **6 free credits offered by the One-Two-Free Initiative!** After that, dual credit classes are approximately \$60.00\* per credit with no fees through Gallatin College. *\*Subject to change*

### What type of students should take dual credit classes?

Students who are academically strong, hardworking, and focused. These classes are recommended for students capable of college level coursework.

### When do I enroll?

Students enrolled in the high school counterpart course can opt in to earn dual credit at the beginning of the year by completing an application and registration forms during class. Gallatin College's dual enrollment coordinator facilitates enrollment sessions in class for each dual enrollment course.

### How does this credit get recorded? Are these credits transferable?

Dual enrollment courses are recorded on a Montana University System transcript and become part of a student's permanent record. Students should only take courses they feel confident in passing (C- or better), as a failing grade can negatively affect college admissions. Credits are fully transferable within the Montana University System. Students attending other institutions should request a MSU- Gallatin College transcript and retain the syllabus to demonstrate course equivalency. For questions about transfers or the Dual Enrollment Program, contact Gallatin College's Dual Enrollment Manager at: (406) 994-2646 or [dual-gallatincollege@montana.edu](mailto:dual-gallatincollege@montana.edu).

## ADVANCED PLACEMENT COURSES



Advanced Placement (AP®) courses are rigorous and academically challenging college-level courses that offer college-level curricula for BHS or GHS credit with the opportunity to earn college credit. The time required for an AP course is significantly greater than a regular class.

### WHY TAKE AP COURSES?

You should consider an AP class if you are interested in an academic challenge and would like to gain experience in a college-level class while you are still in high school. AP courses also offer the opportunity to earn college credit, which can expand your future opportunities. Deciding to take an AP course lets colleges and universities know that you have what it takes to succeed in an undergraduate environment. When admissions officers see "AP" on your transcript, they know that what you experienced in a particular class has prepared you well for the challenges of college. Taking AP is a sign that you're up for the most rigorous classes your high school has to offer.

### DO I REALLY RECEIVE COLLEGE CREDIT FOR AP?

By taking an AP course and scoring successfully on the related AP Exam, you can save on college expenses. Most colleges and universities nationwide have an AP policy granting incoming students' credit and/or placement for qualifying AP Examination grades. These credits can allow students to save college tuition, study abroad, or secure a second major. AP can transform what once seemed unattainable into something within reach. Check out specific colleges' guidelines on accepting AP scores for credit and placement by searching our AP Credit Policy database on the College Board's website.

### OTHER ADVANTAGES WHILE IN COLLEGE

If you already know your preferred college major, taking a related AP course and earning a qualifying score on the AP Exam can help you advance and avoid required introductory courses, allowing you to move directly into upper-level classes and focus on the work that interests you most. Even taking an AP Exam unrelated to your major, whether or not you know what you want to major in, can place you beyond your college's general education requirements. This opens additional time on your schedule, enabling you to do a second major or minor, take exciting electives, or pursue additional interests.

### WHAT DOES IT COST?

There is no fee for the course. At both BHS and GHS, the cost per AP exam is \$115 (fee subject to change). For a family who's income level meets national AP Program qualifications, fee reductions are available, by application.

### HOW DOES THIS IMPACT MY GPA (grade point average)?

In December 2001, the Bozeman School Board voted to implement a weighted grading system [5=A; 4=B; 3=C; 2=D; 0=F]. Courses count towards weighted grades on the 5-point scale. For additional details, please contact your counselor.

### WHAT AP COURSES ARE OFFERED? MAY I TAKE TWO OR MORE?

You can take your AP course(s) in conjunction with a full load of other high school courses in order to meet graduation and diploma requirements. Classes meet every other day. When developing your schedule, make sure you consider the rigorous workload in addition to other school and non-school obligations.

BHS and GHS offer the following AP courses:

AP ART  
AP BIOLOGY  
AP CALCULUS AB  
AP CALCULUS BC  
AP CHEMISTRY  
AP ENGLISH LIT. & COMP.  
AP ENVIRONMENTAL SCIENCE

AP FRENCH LANGUAGE  
AP GERMAN LANGUAGE  
AP HUMAN GEOGRAPHY  
AP MICROECONOMICS  
AP MUSIC THEORY  
AP PHYSICS

AP PSYCHOLOGY  
AP SPANISH LANGUAGE  
AP STATISTICS  
AP U.S. GOV. & POLITICS  
AP U.S. HISTORY (COMBO)  
AP WORLD HISTORY

*\*Students may order unlisted AP exams*

### WHAT ARE ADVANCED PLACEMENT COURSES LIKE?

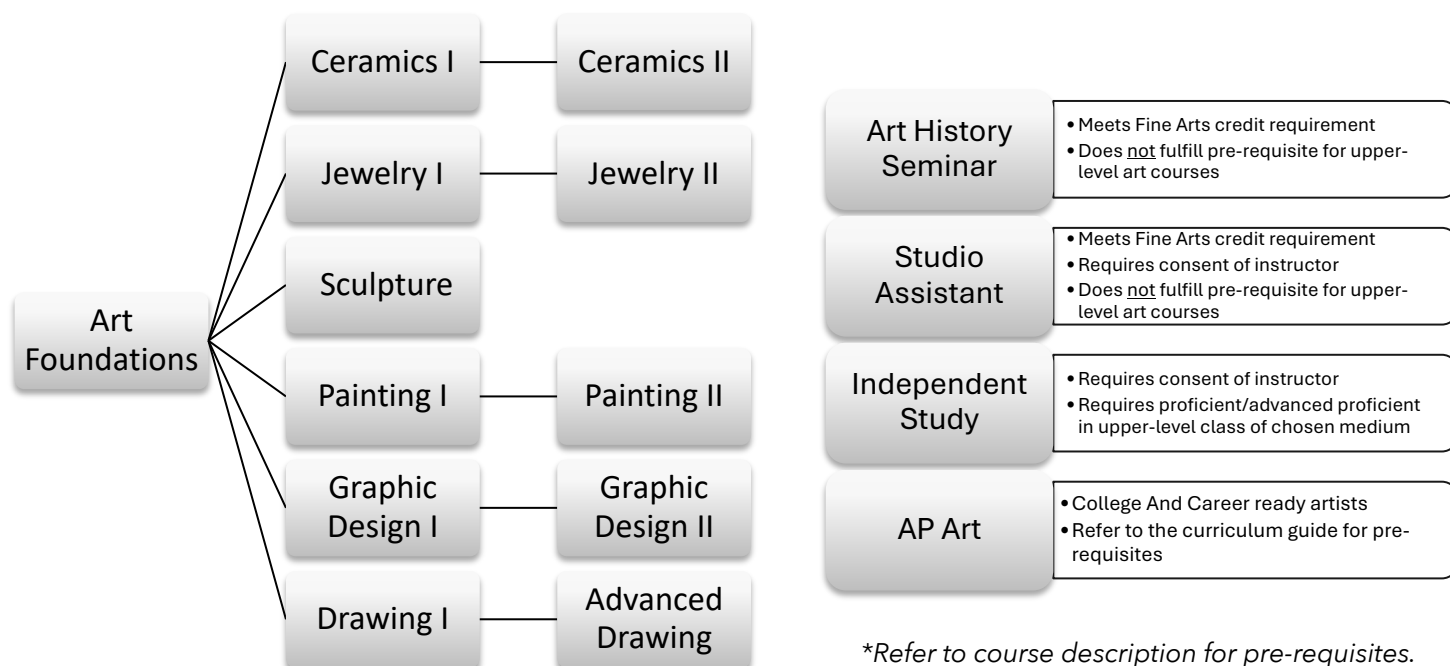
Advanced Placement courses are more demanding than regular high school courses. These courses require strong skills in reading and writing and allow students the opportunity to engage in subjects at a greater depth than regular courses.

### WILL I SUCCEED IN AP?

You might think that AP classes are tough, and you might be right. But that does not mean that you are not up to the task. If you are willing to work hard, you will find that the qualities you use in other parts of your life can help you achieve your goals. Since 1991, 83% of BSD7 students taking AP exams have earned marks of 3, 4, and 5 (the maximum score), exceeding the national figure of 65%. We encourage you to visit with the AP teacher of the course in which you are interested in order to learn about the course requirements before enrolling.



## VISUAL ARTS



### ART FOUNDATIONS AR100

0.5 (SEM)

*Prerequisite: None. Art Foundations is the prerequisite to all upper-level art electives*

*Grade level(s): 9, 10, 11, 12*

Art Foundations is the Art Department's gateway course; it serves as the prerequisite for all upper-level art courses. Art foundations is an introduction to 2-D and 3-D studio art practices and processes. Students will gain exposure to a variety of art materials and work in a studio art setting. Students will develop an understanding of the elements of art and principles of design. Students will explore a variety of mediums and techniques, with an emphasis on quality and craftsmanship. This class develops fundamental skills, prepares students for advanced art classes, allowing them to further their process, ideation, and creativity.

*Credit Type: ART, FLEX*

### DRAWING I AR110

0.5 (SEM)

*Prerequisite: Art Foundations*

*Grade Level(s): 9, 10, 11, 12*

Drawing I is an intermediate level studio class with a focus on the development of drawing and mark-making techniques. Skills learned in Art Foundations will be reinforced and expanded through exploration of a variety of media. Projects will help to develop a basic drawing and printmaking vocabulary. Projects begin with a focus on observation and become increasingly student centered and concept based through the semester.

*Credit Type: ART, FLEX*

### MATERIAL FEES

Many courses have material/course fees that vary by course. The fee will be printed on the course syllabus/disclosure document. Fees should never be a barrier to taking Art classes. Please see your teacher for information

### ADVANCED DRAWING AR115

0.5 (SEM)

*Prerequisite: Art Foundations, Drawing I*

*Grade Level(s): 10, 11, 12*

This class is a natural extension of Drawing I. Projects are increasingly student driven and are developed using advanced techniques and materials. In addition to traditional drawing and mark-making, a significant portion of this class is devoted to printmaking techniques. Projects are approached with an emphasis on exploring a conceptual basis for creating art.

*Credit Type: ART, FLEX*

## **CERAMICS I AR200**

0.5 (SEM)

*Prerequisite: Art Foundations for Freshmen and Sophomores. No prerequisite for Juniors or Seniors.*

*Grade Level(s): 9, 10, 11, 12*

Ceramics I class provides students with an experience in clay, both hand-built and wheel thrown. Students will explore throwing functional ware on the Potter's wheel, Southwestern Native American style coil method, slab construction and sculpting. In addition, students will learn proper studio use and maintenance and study beginning glazing and firing techniques.

*Credit Type: ART, FLEX*

## **CERAMICS II AR205**

0.5 (SEM)

*Prerequisite: Ceramics I*

*Grade Level(s): 10, 11, 12*

Ceramics II is a course designed to be a natural extension of Ceramics I. Students will produce advanced hand-built works and learn more sophisticated wheel-throwing techniques. The course includes a more in-depth examination of glazing and firing techniques. Students will work to develop independent interests and will learn skills required to take independent study in ceramics should they wish to continue studying ceramics in the future. (Ceramics II is required for Independent Study.)

*Credit Type: ART, FLEX*

## **GRAPHIC DESIGN I AR215**

0.5 (SEM)

*Prerequisite: Art Foundations for Freshmen and Sophomores. No prerequisite for Juniors or Seniors.*

*Grade Level(s): 9, 10, 11, 12*

Graphic Design combines creativity, art, and communication. We focus our fundamental art concepts to unite word, symbol and image to create a visual message. This class will introduce students to the expanding field of graphic arts and provide a foundation to continue your studies beyond high school. Students will experience creating a wide range of digital and printed media using the Adobe Design Suite on a Mac platform.

*Credit Type: ART, FLEX*

## **GRAPHIC DESIGN II AR245**

0.5 (SEM)

*Prerequisite: Graphic Design I*

*Grade Level(s): 10, 11, 12*

This advanced class is a studio-based course environment where students will blend new technologies with traditional methods of printing to experience real applications to design. Graphic Design II will present students with the opportunity to design media for actual events. We will be using methods such as silk-screen, block printing, and t-shirt designs to fulfill needs within the high school communities. Students in graphic design are encouraged to develop the skills that apply to college and work settings beyond high school.

*Credit Type: ART, FLEX*

## **PAINTING I AR222**

0.5 (SEM)

*Prerequisite: Art Foundations*

*Grade Level(s): 9, 10, 11, 12*

Painting I is a class that introduces students to painting technique, color theory, color mixing, and tools specific to painting media. Students will explore works from art history and contemporary artistic styles. The course format will include demonstrations, individualized instruction, and studio practice. Using a variety of painting media such as: tempera, watercolor, and acrylic, we will explore an expressive, personal approach to painting and develop our painting skills for further study. If you want to learn to paint for enjoyment or for furthering your art portfolio this class is for you.

*Credit Type: ART, FLEX*

## **PAINTING II AR223**

0.5 (SEM)

*Prerequisite: Art Foundations, Painting I*

*Grade Level(s): 10, 11, 12*

Painting II is an advanced studio class integrating painting concepts, color theory and composition. This class is for the student who is interested in a more complex exploration of painting concepts, exciting new painting materials and techniques. The course format will include demonstrations, individualized instruction, and studio practice. Focus is placed on developing creativity, personal style and an independent voice.

*Credit Type: ART, FLEX*

## **SCULPTURE AR230**

0.5 (SEM)

*Prerequisite: Art Foundations*

*Grade Level(s): 9, 10, 11, 12*

This advanced studio class deals exclusively with three-dimensional techniques and concepts. Students will explore a variety of materials such as clay, cast stone, plaster casting, found objects, etc. Students will generate personal goals and work towards combining expressive ideas with technical skills. Students will learn about various sculptural styles and individual artist's work as they explore historic and contemporary art forms.

*Credit Type: ART, FLEX*

## **STUDIO ASSISTANT AR270**

0.5 (SEM)

*Prerequisite: Consent of Area Chair*

*Grade Level(s): 11, 12*

Studio Assistant is for students who have an interest in helping to supervise and maintain the Robert and Gennie DeWeese Gallery as a gallery guard. Students will assist teachers in preparing art materials for classes, organize and maintain the art studios. Students choosing to become studio assistants will have to meet a structured list of course requirements beyond what is required of a normal art aide. Students work independently to fulfill class requirements that include writing, research, and outside gallery attendance. This course may be repeated. Pass/Fail grading only. Course can be repeated for credit.

*Credit Type: ART, FLEX*

## **JEWELRY I AR280**

0.5 (SEM)

*Prerequisite: Art Foundations; or consent of instructor for Freshmen & Sophomores. No prerequisite for Juniors or Seniors.*

*Grade Level(s): 9, 10, 11, 12*

Jewelry I is a studio introduction to the designs and techniques of metalsmithing and construction. The course format will include demonstrations, individualized instruction, and studio practice. Students will explore the fundamental shaping and fabrication of nonferrous metals such as copper, brass, nickel and silver. Techniques will include sawing, torch use, soldering, stone setting and more. This course focuses on the creation of jewelry and small-scale metal construction, while developing creativity, studio safety and technical skills.

*Credit Type: ART, FLEX*

## **JEWELRY II AR380**

0.5 (SEM)

*Prerequisite: Jewelry I*

*Grade Level(s): 10, 11, 12*

Jewelry II is a continued exploration of the design and techniques of metalsmithing. Like Jewelry I, the course format will include demonstrations, individualized instruction, and studio practice. Students will explore contemporary trends in metalsmithing as well as advance their practice in the fabrication of nonferrous metals. This class takes an in-depth examination of jewelry fabrication. Projects will include chain making, belt buckles, hollow forms such as metal bead making, the use of recycled materials and more. This course also focuses on the creation of jewelry and small-scale metal objects, while developing creativity, studio safety and technical skills.

*Credit Type: ART, FLEX*

## **INDEPENDENT STUDY**

0.5 (SEM)

*Prerequisite: Successful completion of an Art Fundamentals course and successful completion of all classes offered by the art department in the media you are applying for.*

*Grade Level(s): 10, 11, 12*

Independent Study is designed for the student who has taken all courses in the desired media, has exhibited excellent craftsmanship, a strong work ethic and has developed self-directed goals for their independent study course. This course requires the consent of a supervising teacher, the art department chair and the principal. Student interested in Independent Study Art should register for the highest level available in the correct art discipline. This course may be repeated.

Course can be repeated for credit.

*Credit Type: ART, FLEX*

## **AP® ART AND DESIGN AR505**

1.0 (YEAR)

*Prerequisite: Successful completion of Art Foundations, and a minimum of 3 other art courses. Also open to advanced photography students.*

*Grade Level(s): 11, 12*

AP® Art and Design will assist students in creating a portfolio of college-level work that may be submitted for evaluation to the AP board. A qualifying portfolio score can earn college credit and/or advanced placement. In this class, students will communicate their ideas through their works of art and design. They will investigate materials, processes, and ideas that artists and designers use. AP® Art and Design students will practice, experiment, and revise as they create works of art. AP® Art and Design students will select one of the three different portfolio exam choices: AP 2-D ART AND DESIGN, AP 3-D ART AND DESIGN, OR AP DRAWING. Students should show works that demonstrate an inquiry-based sustained investigation of materials, processes, and ideas through practice, experimentation, and revisions in one of these 3 areas of study. Portfolio submissions for evaluation are in May (instead of taking a year-end paper-and-pencil AP Exam).

This course may be repeated and is open to juniors and seniors.

*Credit Type: ART, FLEX*

## **ART HISTORY SEMINAR AR140**

0.5 (SEM)

*Prerequisite: Art Foundations or consent of instructor.*

*Grade Level(s): 11, 12*

The AP Art History course welcomes students into the global art world to engage with its forms and content as they research, discuss, read, and write about art, artists, art making, and responses to and interpretations of art. By investigating specific course content of 250 works of art characterized by diverse artistic traditions from prehistory to the present, the students develop in-depth, holistic understanding of the history of art from a global perspective. Students learn and apply skills of visual, contextual, and comparative analysis to engage with a variety of art forms, developing understanding of individual works and interconnections across history. Course can be repeated for credit.

*Credit Type: ART, FLEX*

---

**INFORMATION TECHNOLOGY**

---

**COMPUTER CODING & DESIGN I BU345**

0.5 (SEM)

*Prerequisite: None**Grade Level(s): 9, 10, 11, 12*

This is an entry-level course that introduces high school students to the foundations of modern computing and computational thinking. Computer Coding and Design I covers a broad range of foundational topics such as programming, algorithms, the Internet, big data, digital privacy and security, societal impacts of computing, and the ways that digital information is encoded, represented and manipulated.

*Credit Type: CTE, FLEX***COMPUTER CODING & DESIGN II BU347**

0.5 (SEM)

*Prerequisite: Computer Coding & Design I**Grade Level(s): 9, 10, 11, 12*

This course enhances computational thinking using the Python programming language. At the end of the course, students should be able to appreciate the variety of ways in which computing can improve the human condition. Learn how computational skills can benefit one's career and life, and design and implement short programs in an interpreted language such as Python.

**\*Dual Enrollment Course-College Credit may be available pending instructor approval.**

*Credit Type: CTE, FLEX***INTRODUCTION TO CYBERSECURITY BU410**

0.5 (SEM)

*Prerequisite: None**Grade Level(s): 9, 10, 11, 12*

This course is designed for students who are interested in exploring careers in Cybersecurity. The focus of the course will include the implementation and monitoring of security on network and computer systems through hands on labs. Students will investigate strategies to identify and protect against security threats such as hackers, eavesdropping, and network attacks.

*Credit Type: CTE, FLEX***COMPUTER CODING & DESIGN IV BU505**

0.5 (SEM)

*Prerequisite: Computer Coding & Design I, II, & Introduction to Cybersecurity**Grade Level(s): 10, 11, 12*

Students can continue enhancing their computer science skills within a progressive pathway that equips them with a focused understanding of computer science engineering and design. Knowledge can be applied towards further pursuit of a computer science degree or application in the workforce.

*Credit Type: CTE, FLEX***KEYBOARDING BU100**

0.5 (SEM)

*Prerequisite: Grade Level or Consent of Instructor**Grade Level(s): 9, 10*

This course will teach students proper keyboarding techniques and essential computer skills. Emphasis will be placed on speed and accuracy using the touch-typing method of keyboarding for personal use. Students will develop a working skill for producing documents using word processing software.

*Credit Type: CTE, FLEX*

---

**HAWK/RAPTOR ENTERPRISES**

---

Talents such as creativity, collaboration, communication, empathy, and adaptability are not just nice to have; they are the core capabilities of a 21st century global economy facing complex challenges. Hawk and Raptor Enterprise courses are designed around this philosophy and encourage all students to become innovators, team players, effective communicators, and problem solvers.

**SPORT & EVENT MARKETING BU145**

0.5 (SEM)

*Prerequisite: None**Grade Level(s): 9, 10, 11, 12*

This course is designed to assist students in applying marketing concepts and theories to sport and entertainment events. Curriculum will cover basic marketing techniques, target marketing and segmentation, sponsorship, budgeting, and cost-benefit analysis. Emphasis will be placed on creating marketing packages, promotion plans, and evaluations of various events.

*Credit Type: CTE, FLEX***TRAVEL & TOURISM MARKETING BU155**

0.5 (SEM)

*Prerequisite: None**Grade Level(s): 9, 10, 11, 12*

This course applies marketing concepts to the various components of the travel and tourism industry including transportation, accommodations, food and beverage, and local attractions. Students will develop skills in communication, human relations, and customer service. Emphasis will be placed on creating marketing packages, promotion plans, and evaluations of various travel and tourism facets.

*Credit Type: CTE, FLEX*

## **MULTIMEDIA BU180**

0.5 (SEM)

*Prerequisite: None*

*Grade Level(s): 9, 10, 11, 12*

Students will explore the world of multimedia by learning how to use the Adobe Suite to create videos and develop print media. Learning will focus on video camera techniques, digital video editing, script/storyboard creation, print layout, and image editing. Projects will incorporate the application of all multimedia tools and components.

*Credit Type: CTE, FLEX*

## **BUSINESS MANAGEMENT BU362**

0.5 (SEM)

*Prerequisite: Consent of Instructor Only*

*Grade Level(s): 11, 12*

In this course students will take their foundational knowledge of business and apply it to the operation of the School Based Enterprise. Work will focus on the management, marketing, finance, operations, production, and customer service associated with a small business. Collaboration between peers, teachers, and departments will occur to assist in the management and growth of the enterprise.

**\*Dual Enrollment Course-College Credit may be available pending instructor approval.**

*Credit Type: CTE, FLEX*

## **MEDIA & MARKETING: SCHOOL TV BU335**

1.0 (YEAR)

*Prerequisite: Multimedia strongly recommended.*

*Grade Level(s): 10, 11, 12*

Media & Marketing emphasizes the interdisciplinary study of video/print media and marketing. Through project-based learning, students will produce media, combining marketing principles and standards of media production. Students will apply the marketing approach to produce informational, promotional and/or entertainment products for various clients. Project work will require both individual and collaborative efforts to produce, promote and maintain a weekly student made informational and entertainment broadcast.

*Credit Type: CTE, FLEX*

---

## **FINANCE & CAREER**

---

### **FINANCIAL SURVIVAL BU125**

0.5 (SEM)

*Prerequisite: None*

*Grade Level(s): 9, 10, 11, 12*

Personal Finance teaches students how to survive and thrive in the 21st century! Students will dive into the real world of money, including jobs and paychecks, budgeting, managing a checking account, paying for college, managing credit, avoiding common financial mistakes, saving for the future, investing for retirement, purchasing insurance for their most valuable assets, and more. This course utilizes engaging simulations and projects so students can practice the skills needed to manage their personal finances throughout life. *This course will meet the requirement (by 2025-26) for Financial Literacy course.*

*Credit Type: CTE, FLEX*

## **CAREER PLANNING BU330**

0.5 (SEM)

*Prerequisite: Grade Level*

*Grade Level(s): 10, 11, 12*

This curriculum is designed to help prepare students for life after high school graduation by examining the various opportunities available to them. Students will research careers and post-secondary institutions while learning about job application skills, internships/apprenticeships, scholarships and financial aid.

*Credit Type: CTE, FLEX*

## **ENTREPRENEURSHIP BU135**

0.5 (SEM)

*Prerequisite: None*

*Grade Level(s): 9, 10, 11, 12*

Entrepreneurship is designed to provide students with a realistic view of the activities involved in operating a self-run business. Introduction to business concepts such as marketing, economics, management, and financial accounting are the backbone of this course. Students will have the opportunity to develop a business plan for a new product or service they create and will pitch their idea using skills learned throughout the semester.

**\*Dual Enrollment Course-College Credit may be available pending instructor approval.**

*Credit Type: CTE, FLEX*

## **ACCOUNTING BU200**

1.0 (YEAR)

*Prerequisite: Grade Level*

*Grade Level(s): 10, 11, 12*

Accounting is the language of business. This course provides a solid introduction to any post-secondary business course. It includes the basics of bookkeeping, including journalizing, posting, preparing financial statements, adjusting and closing entries for a sole proprietorship, partnership, and corporation. Students will also use an automated accounting program and/or business simulation.

**\*Dual Enrollment Course-College Credit may be available pending instructor approval.**

*Credit Type: CTE, FLEX*

## ENGINEERING

Engineers and technical workers will be in high demand into the foreseeable future as the United States continues to compete globally in an increasing high-tech and high-skill economy. The engineering program is a sequential set of courses designed to introduce students to the world of engineering.

### **Engineering I DESIGN and PROBLEM SOLVING EN100**

1.0 (YEAR)

*Prerequisite: None. Recommended first Engineering course.*

*Grade Level(s): 9, 10, 11, 12*

Design and Problem Solving is a foundational engineering course that will expose students to solving problems using the Engineering Design Process. Computer Aided Design (CAD) software, microcontrollers, 3D printing, and laser processing of materials is covered in this course. Students will be challenged to solve real world engineering problems utilizing the tools and materials at their disposal.

*Credit Type: CTE, FLEX*

### **Engineering II ADVANCED ENGINEERING EN200**

1.0 (YEAR)

*Prerequisite: Engineering I: Design and Problem Solving with a grade of C or better.*

*Grade Level(s): 10, 11, 12*

Advanced Engineering dives deeper into the design and problem-solving skills. Additionally, this course gives students the opportunity to explore multiple engineering disciplines such as analog and digital electronics, robotics/automation, programmable logic controllers, programming, systems design, engineering math, applied physics, and manufacturing. Students will also explore rapid prototyping, materials, tools and processes used to solve open ended engineering projects. Each year students will have the opportunity to participate in larger real world design projects which could include, but not limited to NASA HUNCH, VEX Robotics, and Technology Student Association Competitions. **\*This course can be repeated for credit.**

**Subsequent years will have a different experience for students.**

*Credit Type: CTE, FLEX*



## ENGLISH LANGUAGE ARTS

Grade Level	Required Classes (Credit)	Credit Type
9 <sup>th</sup>	English I (1.0) <b>OR</b> English I GATE (1.0)	LA100
10 <sup>th</sup>	English II (1.0) <b>OR</b> English II Honors (1.0)	LA200
11 <sup>th</sup>	English III (1.0) <b>OR</b> English III Honors (1.0) [taught in a combo course with US History or AP US History]	LA300
12 <sup>th</sup>	English IV (0.5) <b>AND</b> English Elective (0.5) [English Elective options include College Prep Reading, Exploration of Literature: Modern Fiction, Exploration of Literature: Science Fiction and Fantasy, College Prep Writing, Creative Writing, and Intro to Debate] <b>OR</b> AP English Literature and Composition (1.0)	LA400

**Note:** All English Elective courses can be taken in 11th and 12th grade; Introduction to Debate can be taken in 9th-12th grades

Grade Level	General & Flex Elective Courses (Credit)	Credit Type
9th-12th	Intro to Debate (0.5)	GEN, FLEX
9th-12th	Speech/Debate II (0.5)	GEN, FLEX
10th-12th	School Newspaper/21st Century Journalism (1.0)	GEN
11th-12th	Fiction and Film (0.5)	GEN

### ENGLISH I LA100

1.0 (YEAR)

*Prerequisite:* None

*Grade Level(s):* 9

This course emphasizes the development of language arts skills—speaking, listening, media literacy, writing, and reading, including the understanding and appreciation of literature. Special attention is given to improving students' expository writing abilities. Grammar and Greek vocabulary are stressed. Research skills are introduced. This course is designed to prepare students for English II.

*Credit Type:* LA1

### ENGLISH I (GATE) LA135

1.0 (YEAR)

*Prerequisite:* Restricted Entry: GATE identified students, or recommendation based on teacher referral and additional qualifications.

*Grade Level(s):* 9

This course emphasizes the development of language arts skills: speaking, listening, media literacy, writing and reading, including the understanding and appreciation of literature. Increased rigor through individualized inquiry, advanced reading opportunities, and emphasis on critical thinking is central in this course offering. Special attention is given to improving students' expository writing abilities. Grammar and Greek vocabulary are stressed. Research skills are introduced. This course is designed to prepare students for English II.

*Credit Type:* LA1

### ENGLISH II LA200

1.0 (YEAR)

*Prerequisite:* English I

*Grade Level(s):* 10

This course emphasizes the continued development of language arts skills—speaking, listening, media literacy, writing, and reading, including the enhanced understanding and appreciation of British and Western literature. Special attention is given to improving students' comparison/contrast and persuasive writing abilities. The research process is taught, culminating in a formal research paper. In addition, the studies of grammar and Latin vocabulary are emphasized. This course is designed to prepare students for the junior-senior English program.

*Credit Type:* LA2

### ENGLISH II HONORS (COMBO) LA225

1.0 (YEAR)

*Prerequisite:* English I and Teacher Signature

*Grade Level(s):* 10

Advanced Placement World History/Honors English II (combo) qualifies as a sophomore level elective class and is team-taught by an English teacher and a Social Studies teacher in a two-period block. This cross-curricular class is a chronological study of world history that conveys a more complex and sophisticated portrait of the world's fascinating past and rich cultural heritage by integrating literature, art, music, and architecture. Students produce college-level essays, document-based responses, and research projects. They also refine their speaking, listening, reading, critical thinking, and group interactive skills. Emphasis is placed on preparing for the Advanced Placement World History exam, which allows for university/college credit in most post-secondary programs. The English portion of this class is more rigorous than English II.

*Credit Type:* LA2

### **ENGLISH III (COMBO) LA375**

1.0 (YEAR)

*Prerequisite: English II*

*Grade Level(s): 11*

American Studies is a class that approaches the study of American literature and American history both chronologically and thematically. This integration enriches the learning experience: just as it is impossible to undertake a meaningful study of American history without understanding the poetry and prose that both drive and chronicle it, one cannot truly comprehend the power behind the words of America's writers without understanding the context of the times in which they wrote. Students gain a greater appreciation of the men and women who, in unique times and through the force of their voices and determination, helped make America the country it is today. Communication skills will be enhanced in this team-taught, two-period class, which fulfills the history and English requirements for junior year.

*Credit Type: LA3*

### **ENGLISH III HONORS (COMBO) LA385**

1.0 (YEAR)

*Prerequisite: English II and Teacher Signature*

*Grade Level(s): 11*

Our American culture is based on our tradition, values, our way of thinking, and our way of life. Experiencing past events through history, literature, art, and music should lead to a greater understanding and appreciation for that heritage. This course offers students the opportunity for building these connections through a chronological study of U.S. history, literature, and culture in an integrated class taught by one member of the Social Studies department and one member of the English department. During the year, students produce college-level essays, document-based responses, and research projects. They also refine critical thinking, speaking, listening, reading and group interactive skills. Emphasis will be placed on preparing for the AP U.S. History exam, which allows for university/college credit in most post-secondary programs. The course fulfills the English and History requirements for junior year and will be taught in a two-hour block.

*Credit Type: LA3*

### **ENGLISH IV LA400**

0.5 (SEM)

*Prerequisite: English III*

*Grade Level(s): 12*

This course focuses on speaking, writing, and media literacy. Emphasis is placed on instruction and practice in speaking and listening skills, the creation of a multi genre portfolio, and the use of media in making oral presentations. The class requires completion of a culminating project with three components: a multi genre portfolio based on research, creation and display of related media messages, and an oral presentation before a review panel and the class.

*Credit Type: LA4*

### **AP® ENGLISH LITERATURE AND COMPOSITION LA500**

1.0 (YEAR)

*Prerequisite: English III and Teacher Signature*

*Grade Level(s): 12*

AP® English is a demanding college-level study of composition and world literature. The course is designed for students who have been successful in their high school English courses, who possess strong study skills, and who are self-disciplined. Most

importantly, this course is designed for students who are genuinely interested in an intense study of literature. Students are also engaged in the careful study and practice of writing which focuses on the critical analysis of literature. The seminar approach is utilized throughout the course, with students given time for individualized learning projects. This course prepares the student for the AP® exams in English Literature and Composition and English Language and Composition. It also prepares the student for success in upper-level college courses in English and other areas of study.

*Credit Type: LA4 and LAEL*

### **EXPLORATION OF LITERATURE: MODERN FICTION LA305**

0.5 (SEM)

*Prerequisite: Grade Level or Consent of Instructor*

*Grade Level(s): 11, 12*

This course is designed for students interested in modern literature published within the past twenty years. Students will have choice in reading short stories, fiction, nonfiction, and memoirs. Students will examine relevant themes and ideas present in these genres. Students will examine texts to engage in critical analysis, writing, and discussion of both fiction and nonfiction. Course formerly named Contemporary Literature.

*Credit Type: LAEL*

### **EXPLORATION OF LITERATURE: SCIENCE FICTION AND FANTASY LA315**

0.5 (SEM)

*Prerequisite: Grade Level or Consent of Instructor*

*Grade Level(s): 11, 12*

This course is designed for students interested in the genres of science fiction and fantasy as literature. The curriculum includes reading, scientific and literary vocabulary development, discussion, writing, oral presentations, analysis of literary characters, and exploration of the role imagined worlds play in our society. Students will examine relevant themes and ideas present in these genres.

*Credit Type: LAEL*

### **COLLEGE PREP READING LA350**

0.5 (SEM)

*Prerequisite: Grade Level or Consent of Instructor*

*Grade Level(s): 11, 12*

This course is designed for college-bound students who wish to improve their reading skills. It focuses on reading speed, comprehension and college-level vocabulary. With the units in speed reading, skimming, and scanning, students learn to become flexible readers, adjusting their speed and level of comprehension according to their purpose. Additionally, students will read college texts to practice reading and note taking skills. Students will respond in both oral and written forms to their readings. Course formerly named Academic Reading.

*Credit Type: LAEL*



## **COLLEGE PREP WRITING LA330**

0.5 (SEM)

*Prerequisite: Grade Level or Consent of Instructor*

*Grade Level(s): 11, 12*

This course is designed to prepare the student in the writing skills necessary for success at the college level. The course begins with a study of the basics of writing: gathering, organizing and developing ideas. The various types of writing—informative, narrative, and argumentative are emphasized. The course culminates in a research project that incorporates these various types of writing. Group processes and speaking activities are also included in the course.

*Credit Type: LAEL*

## **CREATIVE WRITING LA320**

0.5 (SEM)

*Prerequisite: Grade Level or Consent of Instructor*

*Grade Level(s): 11, 12*

Students will explore the world of their own imaginations through writing. Students will investigate the range of fiction and nonfiction writing and create original work in the forms of poetry, personal narrative, personal essay, journal writing, short story, and other genres. In addition, students will read selected works representing these genres.

*Credit Type: LAEL*

## **INTRODUCTION TO DEBATE LA140**

0.5 (SEM)

*Prerequisite: None*

*Grade Level(s): 9, 10, 11, 12*

Most appropriate for underclassmen, this course is designed for students interested in developing skills in argumentative writing and speaking. This course will focus on logic and its use in argumentative contexts. Students will use technology and digital media to conduct research, construct written cases for debate, compose briefs on various avenues of argumentation, and evaluate each others' arguments by using technology to share work. The resultant argumentation will be presented in writing and orally. Students will also learn about competitive academic debate.

*Credit Type: LAEL, FLEX*

## **SPEECH / DEBATE II EL100**

0.5 (SEM)

*Prerequisite: Consent of Instructor Only*

*Grade Level(s): 9, 10, 11, 12*

This course is designed for students interested in competitive speech or debate. It features advanced instruction in speech and debate theory and practice. Students use technology and digital media to enhance their proficiency in speech and debate through technology by utilizing varied research, production, publication, and collaboration tools. Students will test their speech and debate skills both in and out of class, including matches with other Montana high school teams.

Course can be repeated for credit.

*Credit Type: GEN, FLEX*

## **YEARBOOK PRODUCTION EL315**

1.0 (YEAR)

*Prerequisite: None*

*Grade Level(s): 10, 11, 12*

This course consists of the production of the school yearbook. While producing a quality yearbook, students acquire knowledge and skills in the fields of journalism, composition and layout, technology, publishing, graphic arts and business. Students are given positions on the staff based on their applications and previous experience in art, journalism, desktop publishing, photography and/or marketing. Students should be advised that, although Yearbook Production is an academic course, it is also an extracurricular activity that requires work outside of class.

*Course can be repeated for credit.*

*Credit Type: GEN*

## **FICTION AND FILM EL350**

0.5 (SEM)

*Prerequisite: Grade Level or Consent of Instructor*

*Grade Level(s): 11, 12*

This course combines the study of literature and film through three thematic units: Rebellion, Tolerance, and War. Students compare the art of the writer with that of the filmmaker, especially with regard to plot development and characterization. In addition, students gain hands-on experience by scripting, shooting, and editing their own video projects.

*Credit Type: GEN*

## **SCHOOL NEWSPAPER / 21ST CENTURY JOURNALISM EL365**

1.0 (YEAR)

*Prerequisite: Grade Level or Consent of Instructor*

*Grade Level(s): 10, 11, 12*

This project-based course produces Bozeman High or Gallatin High School's student newspaper. The course is writing-centered, but also includes instruction in design and photography. Students will study the basics of reporting and learn to write news, features, profiles, and opinion articles. They will also have the opportunity to learn about advertising, graphic design, copy editing, utilizing social media in journalism, website design and maintenance, podcasting, and many other practical skills. Finally, students will study top-notch non-fiction writing as well as gain an understanding of the history of journalism, First Amendment law, and ethical issues.

*Course can be repeated for credit.*

*Credit Type: GEN*

## **ENGLISH-ML/ELL LA130**

1.0 (YEAR)

*Prerequisite: Consent of Instructor Only*

*Grade Level(s): 9, 10, 11, 12*

This course is designed for English as Second Language students who do not have the skills to participate in regular English classes. The course will parallel the appropriate English class for the students' grade levels but will follow a revised curriculum with an emphasis on learning English grammar and vocabulary. Students will read abridged versions of novels, write essays, give speeches, and complete a research paper. The goal will be to exit students from the class into the general English curriculum by the end of one year.

*Credit Type: LA1, LA, LA3, LA4*

## **CULINARY ARTS I FC115**

0.5 (SEM)

*Prerequisite: None*

*Grade Level(s): 9, 10, 11, 12*

Culinary Arts I is a Certified ProStart Program, which is a School- to-Career program. In Culinary Arts I you will gain foundational cooking skills that can help you be confident in the home kitchen or help you start your journey into a culinary profession. This course focuses on essential food preparation, table setting, etiquette, manners, nutrition and healthy eating. Labs focus on the 5 food groups and include favorite labs such as cookies, stir fry, cream puffs and pie. Students are evaluated on labs, individual assignments, group work and tests. Cooperative group skills are an important component of this class.

*Credit Type: CTE, FLEX*

## **CULINARY ARTS II FC215**

0.5 (SEM)

*Prerequisite: Culinary Arts I*

*Grade Level(s): 9, 10, 11, 12*

Culinary Arts II is a Certified ProStart Program, which is a School- to-Career program. Advance your skills in meal planning, nutrition and food preparation. Learn special skills and vocabulary involved in specialty baking, preparing pasta dishes, breads, desserts, cooking beef and poultry, planning and serving meals. Study and practice ServSafe procedures (food safety/ sanitation). Study of various cuisines will give you an opportunity to learn the customs, cooking techniques, special ingredients, and equipment from a variety of cultures. Students participate in over 15 food labs. "Hands-on" learning is an integral part of this class, providing opportunities for individual and group work. Working cooperatively in a group is an essential part of this course. Students are evaluated on lab experiences, group work, assignments, and written tests. Compete in our final "Chopped" competition.

*Credit Type: CTE, FLEX*

## **ADVANCED CULINARY ARTS FC320**

1.0 (YEAR)

*Prerequisite: Culinary Arts II and Consent of Instructor*

*Grade Level(s): 11, 12*

Advanced Culinary Arts is a Certified ProStart Program, which is a School-to-Career program. It is an exciting nationwide program developed by the National Restaurant Association that prepares students for careers as restaurant and food service professionals. This course introduces students to food service concepts not found in more traditional programs. Classes, combined with lab experiences, are held during a one-hour period for the entire year. During the course students will complete 40 labs, including preparing small plates and hors d'oeuvres, soups and sauces, salads and dressings, a variety of breakfast foods and sandwiches, and a variety of fruits and vegetables. Students participate in private chef events for the school district, service projects, and local/statewide culinary competitions. Competitions/ProStart provide scholarships for participating students. Internships at local businesses will offer students eligibility for certification from the National Restaurant Association. \*\$36 lab fee.

**\*Dual Enrollment Course-College Credit Available.**

**Students enrolling in the ServSafe certification portion of the course will have the option to earn Montana University System credit upon successful completion of the course. Please reference Dual-Enrollment page for additional information.**

*Credit Type: CTE, FLEX, Course can be repeated for credit.*

## **INTRO TO FASHION DESIGN & MERCHANDISING FC125**

0.5 (SEM)

*Prerequisite: None*

*Grade Level(s): 10, 11, 12*

This class introduces students to the world of fashion design featuring information on fashion history, elements and principles of design, color analysis and the apparel industry such as fashion shows and future trends in fashion careers. Students will use the skills gained in this class to create their own designs and will learn essential sewing and construction skills. The fashion merchandising part of this class introduces students to the world of fashion promotion, advertising, publicity, and visual merchandising. Shopping and consumer skills are emphasized. Final may consist of a written final along with a Redesign Project utilizing skills learned throughout the semester. \*\$15 Lab fee.

*Credit Type: CTE, FLEX*

## **INTRODUCTION TO INTERIOR DESIGN FC200**

0.5 (SEM)

*Prerequisite: None*

*Grade Level(s): 10, 11, 12*

This course introduces design as it relates to interior design, architecture and related professions, through the study of the elements and principles of design and the ways in which humans interact with designed environments and elements. One objective of this course is to provide a successful transition from high school to post-secondary education. \* \$25 lab fee.

**\*Dual Enrollment Course-College Credit Available. Students enrolling in this course will have the option to earn Montana University System credit upon successful completion of the course. Please reference Dual-Enrollment page for additional information.**

*Credit Type: CTE, FLEX*

## **CHILD DEVELOPMENT I FC130**

0.5 (SEM)

*Prerequisite: None*

*Grade Level(s): 10, 11, 12*

This course is designed to help students gain realistic expectations of having children and the responsibility of raising them. The course begins with parenting and has students complete many activities to help them understand what a big job parenting is, and if they are ready to take on the responsibility. Next, they will cover conception, pregnancy and birth ending the semester with how children develop the first 5 years of life. Areas of development that will be covered include Physical, Social, Intellectual, and Emotional and students will leave the semester with skills and ideas to help the children they care for succeed in these areas of development. Popular simulation tools such as the Empathy Belly and Real Care Baby give students a hands-on experience, they are sure to remember. Child Development is a beneficial class for anyone interested in becoming a teacher, daycare provider, nurse, doctor and especially a parent. It also is a great foundation for students interested in psychology, sociology and human development.

*Credit Type: CTE, FLEX*

## **EARLY CHILDCARE and EDUCATION FC140**

0.5 (SEM)

*Prerequisite: Child Development I*

*Grade Level(s): 10, 11, 12*

This class offers students the opportunity to learn the skills necessary to begin a career or enter the field of study in Early Childhood Education. Students will explore career possibilities as well as the training and educational requirements to enter the early childhood field. Students will also learn how to create positive learning environments and lessons to help children develop physically, intellectually, socially and emotionally during their early childhood years. Students will have the opportunity for hands-on experience while working with the teachers and students in the school daycare center located on site.

*Credit Type: CTE, FLEX*

## **CHILD CARE INDEPENDENT STUDY FC150**

0.5 (SEM)

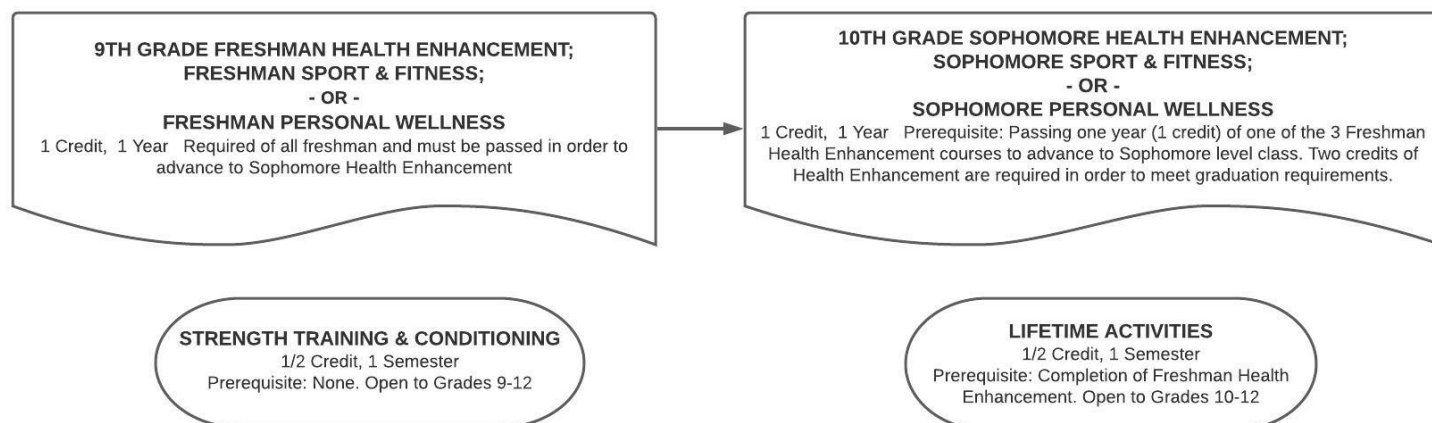
*Prerequisite: Child Development I and Early Child Care & Edu*

*Grade Level(s): 11, 12*

This Independent Study allows students a chance to earn credit for working at the School's Child Care Center located on the high school campus. Students will spend one period per day working with in the Child Care Center to build their skills and knowledge of working with children ages infant to five. Students who are interested in working within the Early Childhood Education field would benefit from this interactive hands-on experience. *Independent Study courses can be repeated for credit.*

*Credit Type: CTE, FLEX*

## HEALTH ENHANCEMENT



### FRESHMAN HEALTH ENHANCEMENT PE100

1.0 (YEAR)

*Prerequisite: None*

*Grade Level(s): 9*

Freshman Health Enhancement course is designed to include a variety of team and individual sports. The primary goal of activity units are skill development, rules of the game, sportsmanship and physical fitness. During health units, students learn knowledge and skills that teach healthy lifestyle choices. Personal evaluation, decision-making skills and goal setting are used to apply the health knowledge attained. Students are expected to attend all classes and actively participate with the course goals in mind. All Freshman HPE classes will complete the same district standards in health, swimming (BHS only), dance, and district assessments.

\*Satisfies Freshman Health Enhancement Requirement

*Credit Type: HE1*

### FRESHMAN SPORT & FITNESS PE105

1.0 (YEAR)

*Prerequisite: None*

*Grade Level(s): 9*

The Sport and Fitness course is designed for students interested in refining skills and strategies of individual and team sports, and to challenge the competitive student. Content will focus on skill development, rules of the game, sportsmanship and physical fitness. In addition, students are expected to demonstrate strategy and sport-related skills into a competitive game setting. During health units, students learn knowledge and skills that teach healthy lifestyle choices. Personal evaluation, decision-making skills and goal setting are used to apply the health knowledge attained. Students are expected to attend all classes and actively participate with the course goals in mind. All Freshman HPE classes will complete the same district standards in health, swimming (BHS only), dance, and district assessments.

\*Satisfies Freshman Health Enhancement Requirement

*Credit Type: HE1*

### FRESHMAN PERSONAL WELLNESS PE106

1.0 (YEAR)

*Prerequisite: None*

*Grade Level(s): 9*

The Personal Wellness course is designed for students to gain knowledge and enjoyment of recreational team games, individual lifetime sports and physical fitness. Primary goals of activities will focus on skill development, rules of the game, sportsmanship and physical fitness. During health units, students learn knowledge and skills that teach healthy lifestyle choices. Personal evaluation, decision-making skill and goal setting are used to apply the health knowledge attained. Students are expected to attend all classes and actively participate with the course goals in mind. All Freshman HPE classes will complete the same district standards in health, swimming (BHS only), dance, and district assessments.

\*Satisfies Freshman Health Enhancement Requirement

*Credit Type: HE1*

### STRENGTH TRAINING AND CONDITIONING - FALL PE140

0.5 (SEM - FALL)

*Prerequisite: None*

*Grade Level(s): 9, 10, 11, 12*

This course is designed to provide students an opportunity to acquire knowledge dealing with the essential training methods for strength training, speed development, agility preparation and flexibility concepts. Strength training will emphasize the proper techniques utilized in both lifting and spotting, while providing students ideas to increase their own physical performance. Students will gain knowledge in proper nutritional considerations and performance enhancing aids as it relates to activity conditioning. While various strength training programs are available, this class will emphasize each student's individual needs and goals. We can tailor workouts based on each student's goals and desires in both conditioning and strength training.

*Course can be repeated for credit.*

*Credit Type: GEN*

## **STRENGTH TRAINING AND CONDITIONING - SPRING PE145**

0.5 (SEM - SPRING)

*Prerequisite: None*

*Grade Level(s): 9, 10, 11, 12*

This course is designed to provide students an opportunity to acquire knowledge dealing with the essential training methods for strength training, speed development, agility preparation and flexibility concepts. Strength training will emphasize the proper techniques utilized in both lifting and spotting, while providing students ideas to increase their own physical performance. Students will gain knowledge in proper nutritional considerations and performance enhancing aids as it relates to activity conditioning. While various strength training programs are available, this class will emphasize each student's individual needs and goals. We can tailor workouts based on each student's goals and desires in both conditioning and strength training.

Course can be repeated for credit.

*Credit Type: GEN*

## **SOPHOMORE HEALTH ENHANCEMENT PE200**

**1.0 (YEAR)**

*Prerequisite: Freshman Health Enhancement or Equivalent*

*Grade Level(s): 10*

Sophomore Health Enhancement course is designed to include team and individual sports. In the activity courses skill development, sportsmanship and physical fitness are the primary goals. In health, lifestyle and personal evaluation, knowledge attainment and synthesis, decision-making skills and goal setting are the objective. Students are expected to attend all classes and participate actively with the course goals in mind. All Sophomore HPE classes will complete the same district standards in Health, swimming (BHS only), and district assessments. \*Satisfies Sophomore Health Enhancement Requirement

*Credit Type: HE2*

## **SOPHOMORE SPORT AND FITNESS PE203**

**1.0 (YEAR)**

*Prerequisite: Freshman Health Enhancement or Equivalent*

*Grade Level(s): 10*

The Sport and Fitness course is designed for students interested in refining skills and strategies of individual and team sports. Content includes examining skills, strategies, proper sportsmanship, and rules. Students are expected to implement those skills into a competitive game setting. Students will also work in exercise sessions for muscle fitness, cardiorespiratory fitness, and personal wellness. This class is designed to challenge the competitive student. Students are expected to attend all classes and participate actively with the course goals in mind. All Sophomore HPE classes will complete the same district standards in Health, swimming (BHS only), and district assessments. \*Satisfies Sophomore Health Enhancement Requirement

*Credit Type: HE2*

## **SOPHOMORE PERSONAL WELLNESS PE204**

1.0 (YEAR)

*Prerequisite: Freshman Health Enhancement or Equivalent*

*Grade Level(s): 10*

This course is designed for students to gain knowledge, understanding and enjoyment of a healthy lifestyle, and improve their current fitness level. In Personal Wellness students will participate mostly in group fitness activities. Emphasis is on information and skills necessary to develop: cardiovascular endurance, muscular strength, muscular endurance and flexibility. This is done through activities that may include: aerobic activities, cross training, circuits, yoga, Pilates, spin, basic calisthenics, interval training, endurance weight training, plyometrics, and games. Students are expected to attend all classes and participate actively with the course goals in mind. All Sophomore HPE classes will complete the same district standards in Health, swimming (BHS only), and district assessments.

\*Satisfies Sophomore Health Enhancement Requirement

*Credit Type: HE2*

## **LIFETIME ACTIVITIES - FALL PE310**

0.5 (SEM - FALL)

*Prerequisite: Freshman Health Enhancement or Equivalent*

*Grade Level(s): 10, 11, 12*

This course is designed for students who are interested in improving their level of fitness and feel the need to make regular physical activity a part of their school day. A variety of activities will be offered, providing opportunities for students to remain active and have experiences that will enhance a lifetime of fitness. Classes will consist of physical conditioning as well as individual and team activities. Lifetime Sports/Activities students will also have the opportunity to experience activities outside of the school such as: bowling, rock climbing, fly fishing, martial arts, skiing and shooting billiards. **\*A financial obligation on the part of the student will be necessary for some of the above activities.**

Course can be repeated for credit.

*Credit Type: GEN*

## **LIFETIME ACTIVITIES - SPRING PE315**

0.5 (SEM - SPRING)

*Prerequisite: Freshman Health Enhancement or Equivalent*

*Grade Level(s): 10, 11, 12*

This course is designed for students who are interested in improving their level of fitness and feel the need to make regular physical activity a part of their school day. A variety of activities will be offered, providing opportunities for students to remain active and have experiences that will enhance a lifetime of fitness. Classes will consist of physical conditioning as well as individual and team activities. Lifetime Sports/Activities students will also have the opportunity to experience activities outside of the school such as: bowling, rock climbing, fly fishing, martial arts, skiing and shooting billiards. **\*A financial obligation on the part of the student will be necessary for some of the above activities.**

*Credit Type: GEN, Course can be repeated for credit.*



## HEALTH SCIENCES

Can you see yourself saving lives in emergency situations, counseling patients about genetic disorders, developing new cancer treatments, or examining X-rays to diagnose injuries? Did you know health care occupations will add more jobs (2.3 million) than any other group of occupations in the next ten years? If medical mysteries and a career in health care interest you, the Biomedical Science Program is for you!

### PRINCIPLES OF THE BIOMEDICAL SCIENCES (BioMed I) HSC100

1.0 (YEAR)

*Prerequisite:* None

*Grade Level(s):* 9, 10, (11 BY CONSENT OF DEPARTMENT CHAIR, 11TH GRADE ENROLLMENT MAY BE CAPPED)

In the first course in the Biomedical Sciences program students will investigate a series of medical cases including a mysterious death of a fictional person! Student work involves the study of forensics, human medicine, human body systems and various medical conditions. The course will consist of labs, activities, projects, problem solving-based learning and soft skills to engage and prepare students for a career in the medical field and college. Students will also study multiple careers and focuses in health care. This is the first of four courses in the Biomedical Sciences Program and must be successfully completed to enroll in subsequent Biomedical Sciences classes. Students will be provided with an overview of the Biomedical Sciences and the foundation necessary for the subsequent three courses. Here's what students are saying about BioMed I, "BioMed offers a mixture of both science and medical interests...you learn a lot of useful life applicable skills and it is a class period that I've looked forward to every single day." This course is designed for freshman and sophomores and is to be taken concurrently with other required science courses.

*Credit Type:* CTE, FLEX

### HUMAN BODY SYSTEMS (BioMed II) HSC200

1.0 (YEAR)

*Prerequisite:* Successful completion of Principles of Biomedical Sciences OR successful completion of AP® Biology (C or better)

*Grade Level(s):* 10, 11, 12

The second course, Human Body Systems, builds on the concepts students learned in the first course and goes much more in-depth into the structures and functions that keep the body alive. Students will study basic human anatomy & physiology, especially in relationship to health & wellness. A central theme is how the body systems work together to maintain homeostasis and good health. Through a variety of projects, labs, and activities, students will examine how the body systems work together to support life and the consequences (disease or illness) when one or more systems do not function properly. This course includes multiple dissections. This course is to be taken concurrently with any required science course and may be taken concurrently with Medical Interventions (MI/BioMed III).

*Credit Type:* CTE, FLEX

### MEDICAL INTERVENTIONS (BioMed III) HSC300

1.0 (YEAR)

*Prerequisite:* Successful completion of Principles of Biomedical Sciences I and Human Body Systems (HBS/BioMed II or BI/BioMed IV can be taken concurrently)

*Grade Level(s):* 10, 11, 12

The course is a "How To" manual for maintaining overall health and homeostasis in the body as students explore how to prevent and fight infections, how to screen and evaluate the code in human DNA, how to prevent, diagnose and treat cancer, and how to prevail when the organs of the body begin to fail. Students investigate a variety of interventions involved in the prevention, diagnosis and treatment of disease as they follow the lives of a fictitious family. These scenarios expose students to the wide range of interventions related to immunology, surgery, genetics pharmacology, medical devices and diagnostics. Each family case scenario introduces multiple types of interventions which may range from simple diagnostic tests to treatment of complex diseases and disorders. These interventions are showcased across generations of a family and provide a look at the past, present and future of biomedical sciences. Lifestyle choices and preventative measures are emphasized throughout the course as are the important roles scientific thinking and engineering design play in the development of interventions of the future. Medical Interventions reinforces concepts learned in the previous two courses, as well as presenting new content. HBS/BioMed II or BI/BioMed IV can be taken concurrently.

*Credit Type:* CTE, FLEX

### BIOMEDICAL INNOVATIONS (BioMed IV) HSC400

1.0 (YEAR)

*Prerequisite:* Successful completion of Principles of Biomedical Sciences, Human Body Systems and Medical Interventions. This course is designed for 11th and 12th grade students and may be taken concurrently with MI/BioMed III.

*Grade Level(s):* 11, 12

Students design innovative solutions for the health challenges of the 21st century, building on their knowledge from the previous 3 courses. They work through progressively challenging open-ended problems, addressing topics such as clinical medicine, design of an emergency room, physiology, biomedical engineering, public health, forensic autopsy, medical terminology and water contamination. Throughout the course, students are expected to present their work to an audience of STEM professionals. Students enrolled in Biomedical Innovations have the opportunity to earn dual credit through MSU's Gallatin College Program (course "Medical Terminology", 3 credits). These college credits are accepted at all Montana colleges and universities. **\*Dual Enrollment Course-College Credit Available. Students enrolling in this course will have the option to earn Montana University System credit upon successful completion of the course. Please reference Dual-Enrollment page for additional information.**

*Credit Type:* CTE, FLEX

## PHOTOGRAPHIC IMAGING TI101

1.0 (YEAR)

*Prerequisite: None*

*Grade Level(s): 9, 10, 11, 12*

This is an introductory level hands-on class for any student who wants to learn to take better and more expressive photographs. This course will introduce the principles and elements of design as it applies to photography. An emphasis will be placed on creativity while students are introduced to basic film and digital camera handling skills and the aesthetics of photography. Emphasis is placed on how to use cameras, lenses, exposure, flash, enlargers, film, related equipment and compositional skills to create original images. Students will work with and understand digital editing techniques common to photography.

*Credit Type: CTE, FLEX*

## INTRO TO METALS TI110

1.0 (YEAR)

*Prerequisite: None*

*Grade Level(s): 9, 10, 11, 12*

Intro to Metals is designed for the beginning student in metalworking. This is a hands-on class comprised of lecture, demonstrations, and assigned projects and quizzes directed toward welding and metalworking procedures. Hands-on opportunities include iron and flame soldering, Oxy Fuel processes, welding with state-of-the-art welders using the Shielded Metal Arc Welding (SMAW), Gas Metal Arc Welding (GMAW), and Gas Tungsten Arc Welding (GTAW) processes. Students will also learn to cut material using the plasma arc, oxy-fuel, and HPG gas torches. Forge and foundry work will also be included in the hands-on opportunities students have during the year. Students will progress at a rate equal to their capabilities. Grades will reflect craftsmanship, quality, safety, and work ethics.

*Credit Type: CTE, FLEX*

## PERSONAL CAR CARE (Auto I) TI120

1.0 (YEAR)

*Prerequisite: None*

*Grade Level(s): 9, 10, 11, 12*

Personal Care (Auto I) is a student-centered, hands-on course that will introduce students to the fundamentals of owning a vehicle revolving around the Automotive Systems and how they function. This will be accomplished through lab exercises centered around safe work habits, tool identification, how to safely operate a two & four post lift, and how to purchase and maintain your vehicle. In Personal Car Care, students will learn how to perform a multi-point inspection that covers the seven main automotive systems: Engine, Automatic Transmission/transaxle, Manual Transmission/transaxle, Steering and Suspension, Brakes, Electrical, Heating, and Ventilation and Air Conditioning (HVAC). Other units include Hand and Power tools, Tire Mount/dismount and balance, Lube, Oil, Filter changes, Wash/Wax/Reconditioning of interior and exterior, as well as certification in usage of a Digital MultiMeter (DMM). Second semester explores the inner workings of a Briggs and Stratton OHV engine with disassembly, measurement, reconditioning and then reassembly.

*Credit Type: CTE, FLEX*

## BEGINNING WOODWORKING TI132

1.0 (YEAR)

*Prerequisite: None*

*Grade Level(s): 9, 10, 11, 12*

This is an introductory level class intended for students with little to no previous woodworking experience. Students will learn the proper and safe usage of a wide variety of woodworking tools, machines, and techniques used in modern woodworking shops. Tools used include stationary power tools, portable power tools and hand woodworking tools. Learning in this class is focused on lab activities. Most of class time is spent in the shop making projects that the student designs within a set of defined specifications. The use of CAD and CNC technology will be employed in project design and construction.

*Credit Type: CTE, FLEX*

## ADVANCED WOODWORKING TI230

1.0 (YEAR)

*Successful completion of Beginning Woodworking and instructor signature.*

*Grade Level(s): 10, 11, 12*

This is a lab-based course where the majority of class time is spent designing and building higher-level projects. Students will review safety protocol and build upon the basic concepts and skills learned in Beginning Woodworking. Emphasis will be placed on wood joinery, cabinet making, mass-production, special processes, and may also include some building construction. The use of CAD and CNC technology will be required in project design and construction.

*Credit Type: CTE, FLEX*

## CONSTRUCTION TRADES: CARPENTRY TI330

1.0 (YEAR)

*Successful completion of 1 introductory shop class (passing grade of C or better in Auto, Woodworking, or Metals) OR Consent of Instructor.*

*Grade Level(s): 11, 12*

This course is designed to teach students the basics of carpentry and construction. Areas of study include essential safety protocols, an orientation to the carpentry trade, and an introduction to material handling, fasteners, and working on a job site. Students will gain hands-on experience with both hand and power tools while learning proper usage and maintenance for each. Throughout the course, students will explore construction drawings, specifications, and layout as they build foundational knowledge of floor and wall framing systems, ceiling joist and roof framing, roofing materials, siding, and other essential construction methods. Practical projects give students the opportunity to apply skills used in the construction trade to complete real projects on our school-based job site. Additionally, the course covers employability skills such as communication, teamwork, and work ethic, equipping students with both the technical skills and the professional mindset necessary for success in the carpentry field and construction industry. **\*Dual Enrollment Course-College Credit Available. Students enrolling in this course will have the option to earn Montana University System credit upon successful completion of the course. Please reference Dual-Enrollment page for additional information.**

*Credit Type: CTE, FLEX*

## **ARCHITECTURAL GRAPHICS TI160**

1.0 (YEAR)

*Prerequisite: None*

*Grade Level(s): 9, 10, 11, 12*

The Architectural Graphics class introduces students to the various drawing types associated with the architectural industry. Students will learn about concept sketching, presentation graphics, architectural rendering, and construction documents used to design and build houses and industrial buildings. Computer Aided Design software will be utilized as well as traditional hand drawing techniques. The class will emphasize using the proper graphic technique and tools to solve architectural problems.

*Credit Type: CTE, FLEX*

## **ARCHITECTURAL GRAPHICS II TI170**

1.0 (YEAR)

*Prerequisite: Architectural Graphics (passing grade of C or better)*

*Grade Level(s): 10, 11, 12*

Architectural Graphics II continues the exploration of architectural design process. In this class students will complete advanced projects in building, landscape, and interior design. This class will also give the student the opportunity to explore an area of interest independently.

*Credit Type: CTE, FLEX*

## **ADVANCED PHOTOGRAPHIC IMAGING TI202**

1.0 (YEAR)

*Prerequisite: Successful completion of Photographic Imaging or Consent of Instructor*

*Grade Level(s): 10, 11, 12*

This is a second level hands-on class for students interested in pursuing higher quality photography. Advanced photo students produce both digital and film photography that is not only technically correct but also emotionally charged and artistic. They increase their knowledge about photographic principles such as composition, camera techniques, composite images and studio lighting. Our in-depth study of photography includes career exploration, investigation of 4-year colleges and 2-year schools. Students will also explore basic business organization and planning techniques appropriate for media and photographic production businesses, including pre-production planning, budgeting and scheduling, portfolio development and presentation skills. Students will continue to improve using Adobe Photoshop for a variety of tasks. Advanced Photo Imaging students have the opportunity to select subject matter from areas of personal interest and conduct independent research into their preferred topic.

*Credit Type: CTE, FLEX*

## **METAL FABRICATION TI210**

1.0 (YEAR)

*Successful completion of Intro to Metals and instructor signature.*

*Grade Level(s): 10, 11, 12*

Metal Fabrication is designed for the student that desires to broaden their knowledge of the metalworking industry. Students will learn the techniques of designing and building assigned and approved personal projects. Basic operation of the milling machine, metal lathe, machining processes, and welding certification requirements will also be covered. Students will also strengthen skills and understanding of the welding and metalworking processes previously gained in Intro to Metals class. Other topics include writing job applications, resumes, and completion of the OSHA industrial safety test. Representatives

from vocational and technical schools will speak on future educational opportunities for students.

*Credit Type: CTE, FLEX*

## **AUTOMOTIVE TECHNOLOGY II TI221**

1.0 (YEAR)

*Successful completion of Personal Car Care (Auto I) and instructor signature.*

*Grade Level(s): 10, 11, 12*

Automotive Technology II is a student-centered, hands-on course that builds on concepts and knowledge learned in Personal Car Care. The course allows students to hone their skills and knowledge with practical applications. Students will delve into the inner workings of the seven automotive systems, as well as safety, and hand and power tool applications. In Automotive II, students will use higher level diagnostics and troubleshooting that they will encounter in the field of automobile repair. Students will use advanced diagnostic tools, repair manuals, computer-based programs to examine, research, and troubleshoot automotive systems to repair malfunctioning systems. Automotive II gives students the skills and knowledge to prepare themselves for an apprenticeship opportunity or trade school with a strong foundation to be successful.

*Credit Type: CTE, FLEX*

## **COLLEGE WELDING THEORY & PRACTICAL I TI510**

1.0 (YEAR)

*Prerequisite: Intro to Metals, Metal Fabrication, or Consent of Instructor*

*Grade Level(s): 11, 12*

College Welding Theory & Practical I is designed around the skills and abilities of the students involved. The students will further their skill level in the Shielded Metal Arc Welding (SMAW), Gas Metal Arc Welding (GMAW), and Gas Tungsten Arc Welding (GTAW) processes. Other topics covered include welding safety, oxy-fuel, definitions covering common metals, joint and weld classifications, welding positions, power source selection, plus manual and semi-automatic cutting principles and terminology. Oxy-fuel practical work will involve fusion welding brazing and cutting. Welding certification requirements and welding symbols will also be covered. **\* Dual Enrollment Course-College Credit Available. Students enrolling in this course will have the option to earn Montana University System credit upon successful completion of the course. Please reference Dual-Enrollment page for additional information.**

*Credit Type: CTE, FLEX*

## **ICTE INDEPENDENT STUDY TI303**

1.0 (YEAR)

*Prerequisite: Consent of instructor*

*Grade Level(s): 10, 11, 12*

Students will pursue more complex problems, assist the instructor with set ups and presentations. These students will also have the opportunity to work on personal projects and will work closely with the instructor in the general care of the shop area. Students may choose their area of expertise: auto, drafting, metals, photo, or woods.

Independent Study courses can be repeated for credit.

*Credit Type: CTE, FLEX*

### **\*MATERIAL FEES**

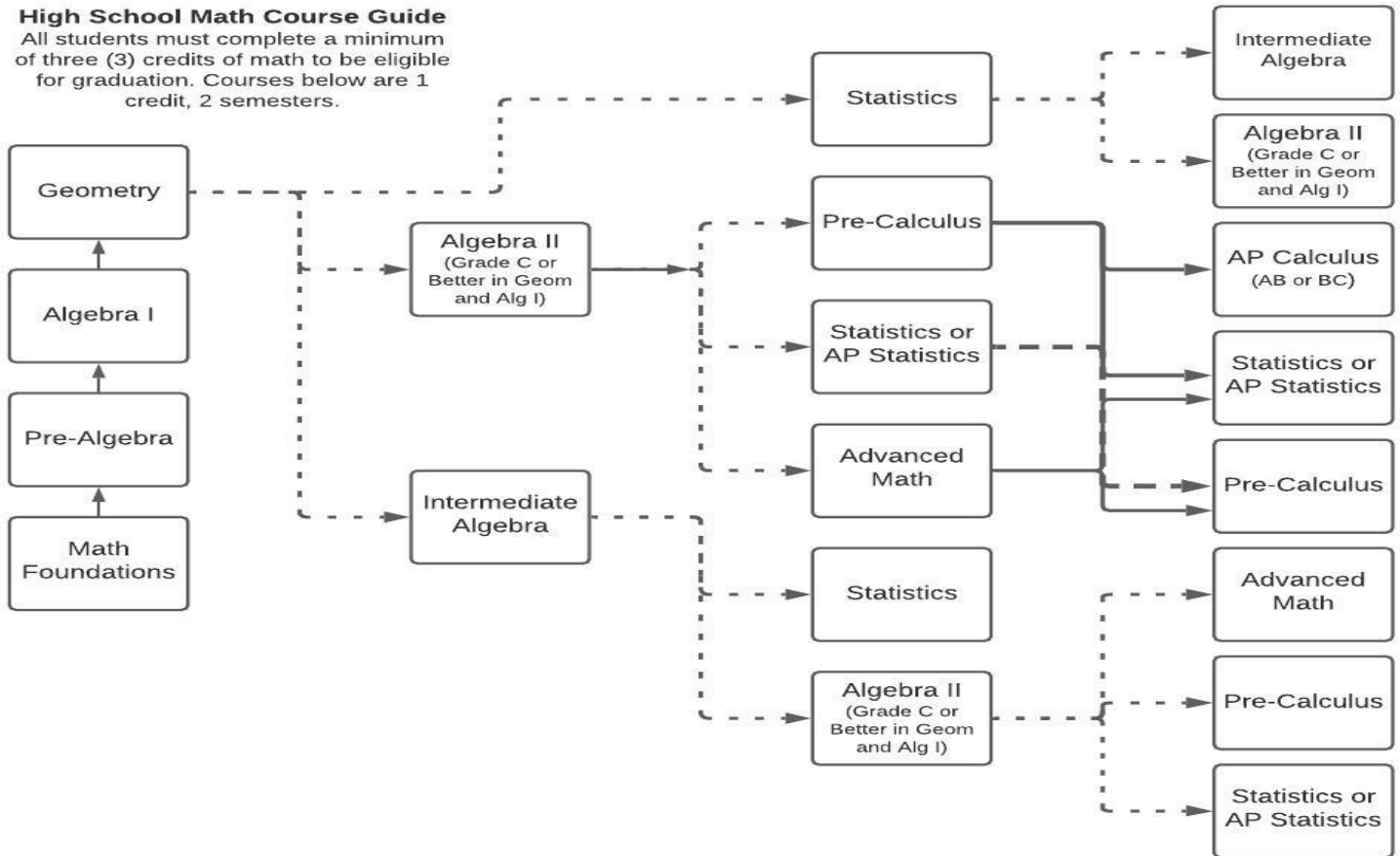
Many courses have material/course fees that vary by course. The fee will be printed on the course syllabus/disclosure document. Fees should never be a barrier to taking ICTE classes. Please see your teacher for information.



# MATHEMATICS

## High School Math Course Guide

All students must complete a minimum of three (3) credits of math to be eligible for graduation. Courses below are 1 credit, 2 semesters.



## MATH FOUNDATIONS MA100

1.0 (YEAR)

Prerequisite: None

Grade Level(s): 9, 10

Foundational concepts and vocabulary for high school mathematics are focused on throughout the year. Students are encouraged to use multiple methods and tools to answer problems. Topics covered the first semester include place value, whole number operations, factors and multiples, order of operations and fractions. Topics covered the second semester include decimal operations, approximation, mathematical applications and integer operations. Ed-Ready will be used to supplement class content and help strengthen student's knowledge of important mathematical concepts.

Credit Type: MATH

## PRE-ALGEBRA MA120

1.0 (YEAR)

Prerequisite: Teacher Signature

Grade Level(s): 9, 10, 11

The focus of Pre-Algebra is to build the foundation necessary for success in the study of algebra. Students will study the properties of mathematics, scientific notation, the language of algebra, solving one step and two step equations, operations on rational numbers and integers, solving inequalities, graphing equations and inequalities, proportion, percent, statistics and graphical analysis, probability, and measurement.

Credit Type: MATH

## ALGEBRA I MA110

1.0 (YEAR)

Prerequisite: Teacher Signature

Grade Level(s): 9, 10, 11

The graphical, numerical, and symbolic aspects of Algebra are emphasized throughout the year. Students are encouraged to think about the geometrical and numerical meaning of what they are doing. Topics covered the first semester include numeric and algebraic expressions, finding solutions to linear equations and inequalities in one and two variables, graphing and elementary data analysis. The main emphasis of the second semester is on higher order expressions and equations (mainly those that are quadratic in nature). Applications to each topic will be stressed throughout the entire year. The graphing calculator will be used to solve problems, evaluate expressions, analyze data and visualize algebra.

Credit Type: MATH

## GEOMETRY MA210

1.0 (YEAR)

Prerequisite: Algebra I and Teacher Signature

Grade Level(s): 9, 10, 11, 12

Visualization, analysis and logical organization are the primary goals stressed in Geometry. Visualization skills are extended from Algebra I to include plane and three-dimensional objects

as well as to build upon the graphical geometry introduced in Algebra I. Analysis of the relationships between different parts of plane and three-dimensional figures challenges students to study the parts and details of objects in the world around them. Logical organization of arguments including inductive and deductive reasoning, problem solving, and communication skills are stressed throughout the course. Technology is used to aid student visualization and exploration of problems and new topics. Algebra I skills will be integrated throughout the year.

*Credit Type: MATH*

## **GEOMETRY (GATE) MA235**

1.0 (YEAR)

*Prerequisite: Restricted Entry: GATE identified students, or recommendation based on teacher referral and additional qualifications*

*Grade Level(s): 9*

GATE geometry is designed for the geometry student who is looking for a more in-depth and challenging course. Geometry is designed to develop spatial concepts and insight into the relationships between plane figures such as points, lines, polygons, and circles, and three-dimensional figure such as prisms, cones, and spheres. Algebraic principles, including the use of coordinates, are applied to geometric problems. Measurements of two and three-dimensional figures will be explored. To appreciate the power of logic as a tool for understanding mathematics and the world around us, the concept of proof is a substantial focus of the course. Technology will be used in the course for understanding and as an instructional tool. Because development of precise mathematical language is stressed, reading and problem solving are emphasized throughout. Students who take GATE geometry should enjoy solving challenging problems and be self-motivated.

*Credit Type: MATH*

## **INTERMEDIATE ALGEBRA MA275**

1.0 (YEAR)

*Prerequisite: Geometry and Teacher Signature*

*Grade Level(s): 11, 12*

Intermediate Algebra is for students who need a bridge course prior to Algebra II following the completion of Geometry. This course reviews the foundational Algebra skills and concepts necessary for success in Algebra II. It will also help develop concepts for career readiness. Topics in the class are, but not limited to, functions, fractions (literal and non-literal), compound fractions, logarithms, factoring, solving equations, quadratics, radicals, elementary statistics, probability, finances, graphing, and number systems.

*Credit Type: MATH*

## **STATISTICS MA310**

1.0 (YEAR)

*Prerequisite: Geometry and Teacher Signature*

*Grade Level(s): 10, 11, 12*

Statistics is a formal introduction to the practice of data and statistical analysis and. It develops descriptive summary statistics presented both numerically and graphically. Next, bivariate data analysis is introduced. Then, sampling and experimental design are studied. The course then advances into an introduction to probability and probabilistic distributions and finishes with an introduction to inferential statistics. Most college majors require a minimum of one semester of statistics. \*Students may NOT receive credit for both Statistics and AP® Statistics.

*Credit Type: MATH,*

## **ALGEBRA II MA300**

1.0 (YEAR)

*Prerequisite: Earned credit for all four semesters of Algebra I and Geometry, plus Teacher Signature*

*Grade Level(s): 10, 11, 12*

Algebra II is an extension of the graphical, numerical, and symbolic aspects of mathematics learned in Algebra I along with the geometric relationships studied in Geometry. Topics covered first semester include systems of equations and inequalities in two and three variables utilizing a variety of methods and quadratic functions and equations. The emphasis second semester is on non-linear systems including polynomial, rational, radical, logarithmic, and exponential functions and equations. The end of the year will include an introduction to probability and statistics. The graphing calculator will be used throughout the year in Algebra II.

*Credit Type: MATH*

## **ADVANCED MATH MA320**

1.0 (YEAR)

*Prerequisite: Algebra II and Teacher Signature*

*Grade Level(s): 11, 12*

Advanced Math is a mathematical extension of many Algebra II topics. It also includes in-depth graphical analysis, an introductory discussion of trigonometry, and probability and statistics. Students who successfully complete Advanced Math/Math for Liberal Arts will be ready for Statistics or Pre-calculus. **\*Dual Enrollment Course-College Credit Available. Students enrolling in this course will have the option to earn Montana University System credit upon successful completion of the course. Please reference Dual-Enrollment page for additional information.**

*Credit Type: MATH*

## **AP® STATISTICS MA505**

1.0 (YEAR)

*Prerequisite: Algebra II and Teacher Signature*

*Grade Level(s): 10, 11, 12*

AP statistics is an introduction to the major concepts and tools for collecting, analyzing, and drawing conclusions from data. Students are exposed to four broad conceptual themes:

1. Exploring Data: Describing patterns and departures from patterns; 2. Sampling and Experimentation: Planning and conducting a study; 3. Anticipating Patterns: Exploring random phenomena using probability and simulation; 4. Statistical Inference: Estimating population parameters and testing hypotheses. Components of the course include the use of technology, projects and laboratories, and writing as a part of a concept-oriented approach. This approach allows students to build interdisciplinary connections with other subjects and with their world outside school. \*Students may NOT receive credit for both Statistics and AP® Statistics.

*Credit Type: MATH*

## **PRE-CALCULUS MA340**

1.0 (YEAR)

*Prerequisite: "C" or better in both semesters of Algebra II and Teacher Signature*

*Grade Level(s): 10, 11, 12*

Pre-calculus is a mathematical extension of many Algebra II topics along with an in-depth coverage of Trigonometry. Topics covered the first semester include solving equations and inequalities and functional analysis. Basic trigonometric functions and some trigonometric analysis will also be covered first semester. Second semester continues with advanced trigonometric topics, analytic geometry including conic sections and polar representations along with other algebraic extensions. The end of the year will include sequences and series and logarithmic and exponential functions. Sophisticated functions of the graphing calculator will be used for problem solving purposes. Students contemplating taking university courses in any of the following fields should seriously consider taking this course: Architecture, Economics, Environmental Sciences, any of the Sciences including Biology, Chemistry, and Physics, Earth Sciences, Geology, any Engineering field, Microbiology or any area of Mathematics.

*Credit Type: MATH*

## **AP® CALCULUS AB MA503**

1.0 (YEAR)

*Prerequisite: Pre-Calculus and Teacher Signature*

*Grade Level(s): 11, 12*

The graphical, numerical, and symbolic aspects of calculus are emphasized throughout the year. Students are encouraged to examine geometric and numeric meaning throughout the course. Topics covered during the first semester include functional analysis (algebraic, trigonometric, exponential and logarithmic), finding limits, determining continuity of functions, differentiation, and the applications of derivatives of more complex functions. The main emphasis second semester is on the study of integration and its applications. The use of graphing calculators is emphasized throughout the year. Advanced Placement® exam is optional.

*Credit Type: MATH*

## **AP® CALCULUS BC MA504**

1.0 (YEAR)

*Prerequisite: Pre-Calculus and Teacher Signature*

*Grade Level(s): 11, 12*

AP® Calculus BC is an extension of AP® Calculus AB rather than an enhancement. The course will cover more material in the same amount of time. Common topics require a similar depth of understanding. Both courses are intended to be challenging and demanding. The topic outline for Calculus BC includes all Calculus AB topics. Please see the AP® Calculus AB description. Additional BC topics include: parametric, polar, and vector functions; L'Hospital's Rule, including its use in determining limits and convergence of improper integrals and series; antiderivatives by substitution, parts and simple partial fractions; improper integrals; and infinite series. The content of AP® Calculus BC is designed to qualify the student for placement and credit in a college course that is one course beyond that granted for Calculus AB. Students may sign up for either AP® Calculus AB or AP® Calculus BC.

*Credit Type: MATH*

## BAND

### CONCERT BAND MU130

1.0 (YEAR)

*Prerequisite: Previous instrumental (school band) music experience and appropriate standard instrumentation*

*Grade Level(s): 9-12*

Concert Band is the introductory-level high school band for grades 9-12. Acceptance into the ensemble is based upon active participation in an 8th grade or high school band, for those choosing not to audition, or for those who did not qualify for the other two high school bands. This band is a large performance ensemble that places its emphasis on quality performance of level-appropriate standard and contemporary band literature. Besides continued technical development, this class will provide the opportunity for its members to participate in a variety of graded concerts, festivals, marching performances, pep band, small ensembles, and travel opportunities, that are held primarily as co-curricular events outside the school day. In the fall, Concert Band combines with the two other band ensembles to form the Marching Band. *Course can be repeated for credit.*

*Credit Type: ART, FLEX*

### PERCUSSION ENSEMBLE MU135

1.0 (YEAR)

**Requirement: All percussion students register for this class instead of Concert, Symphonic, or Wind Ensemble.**

*Prerequisite: Previous experience in middle and/or high school with at least two years as a percussionist in that setting. This is not a beginning percussion class.*

*Grade Level(s): 9-12*

The Percussion Ensemble will facilitate all percussion students. This course is an in-depth study of the proper technique, history, care, and maintenance of the wide array of percussion instruments. Studies into traditional concert, marching, and world instruments, as well as music composition will culminate with performances at band concerts and percussion only concerts. The focus of the first eight weeks of the fall semester will be drumline and marching band instruments and music, followed by learning and preparing concert band percussion music for performance with their respectively assigned bands: Concert, Symphonic, or Wind Ensemble. Students will perform with those groups in their regular concerts throughout the year. Students in percussion class will participate in a variety of concerts, festivals, marching shows, pep band, small ensembles and travel opportunities.

*Credit Type: ART, TECH*

### SYMPHONIC BAND MU205

1.0 (YEAR)

*Prerequisite: Previous instrumental (school band) music experience required, recorded or live individual audition with director, and appropriate standard wind band instrumentation.*

*Grade Level(s): 9-12*

Symphonic Band is an audition-based large performance ensemble that places its emphasis on quality performance of appropriate-level standard and contemporary band literature

and is designed for the advancing student musician. Besides continued technical development, this class will provide the opportunity for its members to participate in a variety of graded concerts, festivals, marching performances, pep band, small ensembles, and travel opportunities, that are held primarily as co-curricular events outside the school day. Symphonic Band combines in the fall with the two other band ensembles to form the Marching Band.

*Course can be repeated for credit.*

*Credit Type: ART, FLEX*

### WIND ENSEMBLE MU200

1.0 (YEAR)

*Prerequisite: Recorded or live individual audition with director and limited instrumentation as either a full wind band OR wind ensemble concept of only one or two students per part, based on standard wind band instrumentation.*

*Grade Level(s): 9-12*

The Wind Ensemble is the premiere performing band at BHS & GHS. It is an elite ensemble comprised of the student musicians of the highest musical capabilities. Individual desire, commitment to the ensemble, discipline, enthusiasm, technical skills, musicianship and rehearsal etiquette are fundamental requirements of each member of this group. The class will provide advanced technical development, study of the finest contemporary and traditional high school and collegiate band literature, as well as provide the opportunity for its members to participate in a variety of graded concerts, festivals, marching performances, pep band, orchestra concerts, small ensembles and travel opportunities, that are held primarily as co-curricular events outside the school day. The Wind Ensemble combines in the fall with the two other band ensembles to form the Marching Band.

*Course can be repeated for credit.*

*Credit Type: ART, FLEX*

### JAZZ BAND I MU143

1.0 (YEAR)

*Prerequisite: By Audition Only, and absolutely must be enrolled in one of the following musical ensembles Concert Band, Symphonic Band, or Wind Ensemble. Enrollment is also determined by standard jazz instrumentation and section size limitations.*

*Grade Level(s): 10, 11, 12*

Jazz Band I is the premiere performing jazz ensemble. Students will study and prepare the finest contemporary and traditional jazz band literature, as well as develop individual skills in the art of improvisation. Students must be self-motivated, well disciplined, and willing to accept the commitment expectation of this ensemble. This class will provide the opportunity for its members to participate in a variety of concerts, festivals, dance gigs, and/or other community events, that are held primarily outside the school day.

*Course can be repeated for credit.*

*Credit Type: ART, FLEX*

### JAZZ BAND II MU145

1.0 (YEAR)

*Prerequisite: Absolutely must be enrolled in one of the following musical ensembles: Concert Band, Symphonic Band, or Wind Ensemble Enrollment is also determined by standard jazz instrumentation and section size limitations.*

*Grade Level(s): 9, 10, 11, 12*

Student enrollment is open to those playing traditional jazz band instruments; saxophones, trumpets, trombones, and rhythm, (bass, guitar, piano, drums). Students will study and prepare both traditional and contemporary jazz band literature, as well as develop individual skills in the art of improvisation. Students must be self-motivated and well disciplined. This class will provide the opportunity for its members to participate in a variety of concerts, festivals, dance gigs, and/or other community events, that are held primarily outside the school day.

*Course can be repeated for credit.*

*Credit Type: ART, FLEX*

---

## CHOIR

---

### TREBLE CHOIR MU175

1.0 (YEAR)

*Prerequisite: None*

*Grade Level(s): 9, 10, 11, 12*

This choir of soprano and alto voices is open to any student. This class will develop and nurture basic vocal, performance, and musicianship skills. It will also provide study of a variety of choral literature and performance opportunities.

*Course can be repeated for credit.*

*Credit Type: ART, FLEX*

### TENOR/BASS CHOIR MU180

1.0 (YEAR)

*Prerequisite: None*

*Grade Level(s): 9, 10, 11, 12*

This choir of tenor, baritone, and bass voices is open to any student. This class will develop and nurture basic vocal, performance, and musicianship skills. It will also provide a variety of choral styles to include lighter music, Barbershop, and standard tenor/bass literature.

*Course can be repeated for credit.*

*Credit Type: ART, FLEX*

### ADVANCED TREBLE CHOIR MU235

1.0 (YEAR)

*Prerequisite: Audition with director*

*Grade Level(s): 10, 11, 12*

Advanced Treble Choir is open to all students as an auditioned choir. The class provides the development of vocal techniques and musicianship through the study and performance of a variety of choral styles and literature. Students will have the opportunity to participate in various concerts, festivals, and travel. *Course can be repeated for credit.*

*Credit Type: ART, FLEX*

### CONCERT CHOIR MU210

1.0 (YEAR)

*Prerequisite: Audition with director*

*Grade Level(s): 10, 11, 12*

Concert Choir is open to students as an audition, mixed voice (SATB) choir. The class provides the development of vocal techniques and musicianship through the study and performance of a variety of choral styles and literature. Students will have the opportunity to participate in various concerts and festivals.

*Course can be repeated for credit.*

*Credit Type: ART, FLEX*

### CHAMBER CHOIR MU220

1.0 (YEAR)

*Prerequisite: Audition with director*

*Grade Level(s): 10, 11, 12*

The Chamber Choir is a forty to fifty voice choir of mixed voices and is one of the elite performing vocal ensembles at BHS/GHS. Each student must demonstrate a high caliber of vocal skills and musicianship. The class provides a refinement of musical skills and vocal technique, study of a variety of choral styles and literature, and participation in various concerts, festivals, and travel opportunities.

*Course can be repeated for credit.*

*Credit Type: ART, FLEX*

### JAZZ CHOIR MU240

1.0 (YEAR)

*Prerequisite: Co-requisite-Member of the Chamber Choir*

*Grade Level(s): 11, 12*

Jazz Choir will be comprised of 16-20 singers auditioned from the Chamber Choir and is one of the elite ensembles at BHS/GHS. This choir will rehearse and perform primarily vocal jazz music. Performance opportunities will include festivals, competitions, concerts and community outreach programs (i.e. luncheons, service club meetings, etc.).

*Course can be repeated for credit.*

*Credit Type: ART, FLEX*

---

## ORCHESTRA

---

### CONCERT ORCHESTRA MU157

1.0 (YEAR)

*Prerequisite: Previous orchestral experience*

*Grade Level(s): 9, 10, 11, 12*

Concert Orchestra is the high school entry level orchestral large ensemble experience for string players. It is designed to further the ensemble and technical skills of the advancing string player regardless of individual instrumental proficiency. Performance literature and developmental studies are carefully selected to grow musical sensitivity, cultural sophistication, expressive potential and a relationship with a community of fellow like-minded musicians. This course also entails an academic aspect which exposes students to a knowledge base commensurate with their performance skill level. This ensemble performs several times during the year in concert and festival settings.

*Course can be repeated for credit.*

*Credit Type: ART, FLEX*

### FIRENZE ORCHESTRA MU161

1.0 (YEAR)

*Prerequisite: Audition with director*

*Grade Level(s): 10, 11, 12*

Firenze is our step up orchestral large ensemble experience for string players. It is the next step in advancement from Concert Orchestra and is designed to further the ensemble and technical skills of the advancing string player, regardless of individual instrumental proficiency. Performance literature and developmental studies are carefully selected to grow musical sensitivity, cultural sophistication, expressive potential, and a relationship with a community of fellow like-minded musicians. This course also entails an academic aspect which exposes students to a knowledge base commensurate with their performance skill level. This ensemble performs several times during the year in concert and festival settings.

*Course can be repeated for credit.*

*Credit Type: ART, FLEX*



## **SYMPHONY ORCHESTRA MU159**

1.0 (YEAR)

*Prerequisite: Audition with director*

*Grade Level(s): 10, 11, 12*

The Symphony Orchestra is the next step in advancement from Firenze Orchestra and is our preparatory orchestra for Philharmonic. Most string students will have a 1-2-year tenure as a member of this group. The course is designed to develop the technical, musical, and ensemble skills of our advancing instrumentalists through the preparation and performance of carefully selected, pedagogically sound orchestral repertoire and technical studies. The mission of this group is to propel serious music students to the 'next level' while performing enjoyable orchestral literature at a high level. This course also furthers the academic training (begun in Concert Orchestra), which exposes students to a knowledge base commensurate with their performance skill level. This ensemble performs several times during the year in concert and festival settings.

*Course can be repeated for credit.*

*Credit Type: ART, FLEX*

## **PHILHARMONIC ORCHESTRA MU162**

1.0 (YEAR)

*Prerequisite: Audition with director*

*Grade Level(s): 10, 11, 12*

The Philharmonic Orchestra is the elite large string/full orchestra ensemble at BHS and GHS, comprised of the most advanced string, woodwind, brass, and percussion players. The course is designed to further develop technical, musical and ensemble skills of accomplished instrumentalists through the preparation and performance of the finest string and symphonic literature from the past 400 years. The group performs as a string orchestra for the first and last concert of the year, and (with the addition of hand-picked wind, brass and percussion players from our top band) as a symphonic full orchestra for the mid-year concerts. Individual dedication toward the group effort is expected in this high-level ensemble. Students have a variety of opportunities to perform that include concert, festivals, and tours.

*Course can be repeated for credit.*

*Credit Type: ART, FLEX*

## **KAMERATA MU158**

1.0 (YEAR)

*Prerequisite: Invitation through audition with director*

*Grade Level(s): 10 (very serious sophomores may be considered), 11, 12*

The Kamerata is the elite performing ensemble experience at BHS/GHS for the most advanced string and woodwind players. Rehearsal time is devoted equally to the study of the Chamber Music and "director-less" Chamber Orchestra. It is a laboratory for rehearsal technique, self-motivation, and positive peer influence. Literature is selected from an extensive library of the finest music from iconic composers from the past 400 years. Chamber ensembles require independent thinking, cooperative learning, and deep personal motivation. This course has been designed as a vocational preparation to incubate the creative, technical, and ensemble skills of the serious music student who intends to make music a lifelong pursuit. Performance opportunities are numerous.

*Course can be repeated for credit.*

*Credit Type: ART, FLEX*

## **AP MUSIC THEORY MU500**

1.0 (YEAR)

*Prerequisite: Two years of high school music and Teacher Signature*

*Grade Level(s): 11, 12*

The AP Music Theory class is designed for the serious student who wants to develop higher levels of musical skills for use after high school. The theory skills covered will include: reading and writing of fundamentals of music, rhythmic and melodic dictation, sight-reading, composition, keyboard skills, and ear-training. The class goals will be geared toward successful completion of the AP exam.

*Credit Type: ART, FLEX*

## **GUITAR I MU117**

1.0 (YEAR)

*Prerequisite: Enrollment by permission or interview with instructor*

*Grade Level(s): 10, 11, 12*

Introduction to Guitar is open to all students by permission of the instructor. This course is for students who are beginners in guitar, or for students who have experience playing riffs on guitar, but who do not read music beyond a beginning level. Curriculum includes classical, folk, rock and blues. \*\$25 material fee

*Credit Type: ART, FLEX*

## **GUITAR II MU118**

1.0 (YEAR)

*Prerequisite: Audition with instructor*

*Grade Level(s): 10, 11, 12*

Guitar II is for intermediate to advanced guitar students who have studied and performed on guitar, and who feel at ease playing one or more styles of guitar proficiently. In addition, participants need to read music staff at an intermediate level or better. This course moves quickly, enhancing the various styles of guitar, including classical, folk, rock and blues.

*Course can be repeated for credit. \*\$25 material fee*

*Credit Type: ART, FLEX*

## **MATERIAL FEES**

Many courses have material/course fees that vary by course. The fee will be printed on the course syllabus/disclosure document. Fees should never be a barrier to taking Music classes. Please see your teacher for information

### **THEATER PRODUCTION I MU100**

0.5 (SEM)

*Prerequisite: None*

*Grade Level(s): 9, 10, 11, 12*

This course introduces the student to the world of theater by exploring theatrical performance and technique on an introductory level. Theatre Production I is for the student looking for greater confidence and skill in front of an audience; or, that student wishing to make that first leap toward an exciting career in theater or motion pictures. Theatre games, solo and group improvisations, directing for stage and screen, playwriting and screenwriting, are just a few of the many activities included in this course.

*Credit Type: ART, FLEX*

### **THEATER PRODUCTION II MU105**

0.5 (SEM)

*Prerequisite: Theater Production I*

*Grade Level(s): 9, 10, 11, 12*

This course is a continuation of Theatre Production I and a must for any student wishing to pursue a career in theater or motion pictures. Focusing on advanced performance styles, improvisational technique and elements of production; students will organize and produce a production of their own for a community audience. Training will be given to prepare actors for a working market, such as audition technique, headshot and resume preparation, and how to locate an agent. Acting and directing for the camera, stage combat, and stunt work complete this course.

*Credit Type: ART, FLEX*

### **ADVANCED THEATER PRODUCTION MU106**

0.5 (SEM)

*Prerequisite: Successful audition with director and Theatre Production I or equivalent theatrical experience*

*Grade Level(s): 9, 10, 11, 12*

Advanced Theatre Production is designed to challenge the serious theatre student through rehearsal and performance of classic and contemporary plays. Emphasis will be placed on the rehearsal process with the production of a main stage show for the community. Students must be well disciplined and willing to take on the responsibilities of working with an ensemble.

*Course can be repeated for credit.*

*Credit Type: ART, FLEX*

## SCIENCE

Grade Level	Required Courses (Credit)	Credit Type
9 <sup>th</sup>	GeoPhysical Science (1.0) OR GeoPhysical Science GATE (1.0)	SC1
10 <sup>th</sup>	Biology (1.0) OR AP Biology (1.0)	SC2
<u>Note:</u> Students must have 1.0 credit of either Chemistry or Physics to earn the Science STEM Distinction		
Grade Level	General Elective Courses (Credit)	Credit Type
10 <sup>th</sup> -12 <sup>th</sup>	Astronomy (0.5); Geology (0.5)	GEN
11 <sup>th</sup> -12 <sup>th</sup>	Chemistry (1.0); AP Chemistry (2.0); AP Environmental Science (1.0)	SC3 or GEN
11 <sup>th</sup> -12 <sup>th</sup>	Physics (1.0); AP Physics (1.0) (No Lab)	SC3 or MATH
11 <sup>th</sup> -12 <sup>th</sup>	Anatomy and Physiology (1.0); Wildlife Biology-Fall (0.5); Wildlife Biology-Spring (0.5); Independent Study in Science (1.0)	GEN

### GEOPHYSICAL SCIENCE SC100

1.0 (YEAR)

*Prerequisite:* None

*Grade Level(s):* 9

GeoPhysical Science integrates the study of Earth, Space, and Physical Science based on the Next Generation Science Standards. Students will develop their understanding of disciplinary core ideas in the earth and space sciences as well as core ideas in the physical sciences which include fundamental concepts from earth and space, chemistry and physics, but allow for expanded study in upper-level high school courses. While studying these core ideas, students will also pay attention to major cross-cutting concept themes that emerge in all of science, such as cause and effect relationships, energy and matter, and stability and change. This integrated earth, space, and physics course is a practical approach to the science of earth and space systems through the lens of fundamental physics.

*Credit Type:* SC1

### GEOPHYSICAL SCIENCE (GATE) SC115

1.0 (YEAR)

*Prerequisite:* Restricted Entry: GATE identified students, or recommendation based on teacher referral and additional qualifications

*Grade Level(s):* 9

GATE GeoPhysical Science provides an in-depth integration of the study of Earth, Space, and Physical Science based on the Next Generation Science Standards. Students will develop their understanding of disciplinary core ideas in the earth and space sciences as well as core ideas in the physical sciences which include fundamental concepts from earth and space, chemistry and physics, but allow for expanded study in upper-level high school courses. While studying these core ideas, students will also pay attention to major cross-cutting concept themes that emerge in all of science, such as cause and effect relationships, energy and matter, and stability and change. GATE GeoPhysical Science focuses on several scientific practices which include developing and using models, planning and conducting investigations, analyzing and interpreting data, using mathematical and computational thinking, and constructing explanations; students will use these practices to demonstrate understanding of the core ideas. Students are also expected to demonstrate understanding of several engineering practices, including design and evaluation. This integrated earth, space,

and physics course is a practical approach to the science of earth and space systems through the lens of fundamental physics.

*Credit Type:* SC1

### BIOLOGY SC200

1.0 (YEAR)

*Prerequisite:* GeoPhysical Science

*Grade Level(s):* 10

This course is an overview of the concepts and functioning of biological systems based on the Next Generation Science Standards. Becoming more scientifically literate will help the students to better understand the many biological problems facing people and communities today. The ideas build upon students' science understanding of disciplinary core ideas, science and engineering practices, and crosscutting concepts from earlier grades. Semester topics include Structure and Function, Inheritance and Variation of Traits, Matter and Energy in Organisms and Ecosystems, Interdependent Relationships in Ecosystems, and Natural Selection. This course is required of all tenth graders and coupled with completion of GeoPhysical Science will meet the general science requirements for graduation.

*Credit Type:* SC2

### AP® BIOLOGY SC500

1.0 (YEAR)

*Prerequisite:* Physical Science and Teacher Signature

*Grade Level(s):* 10, 11, 12

AP® Biology is designed for advanced science students with high-level academic skills. It will involve rigorous content and will move at a college-level pace. The course is instructed in accordance with the College Board's academic standards for college biology. The College Board recommends students complete biology and chemistry prior to this course. Consistent with collegiate expectations, students should expect to invest one to two hours outside of class for each hour spent in class. Additionally, students should be able to write at a college level and read for comprehension independently of instructor's assistance. Topics covered include molecular and cell biology, genetics, evolution, form and function of living organisms, and ecology. College credit may be earned by successfully passing the AP® exam.

*Credit Type:* SC2



## **CHEMISTRY SC300**

1.0 (YEAR)

*Prerequisite:* "C" or better in both semesters of Algebra I

*Grade Level(s):* 11, 12

This course is a comprehensive study of Inorganic Chemistry with an introduction to Organic and Nuclear Chemistry. The focus of this course will be to establish the fundamental principles of chemistry and to apply this knowledge to an understanding of the descriptive chemistry of the elements. Lab work involves both quantitative and qualitative investigations. The laboratory work will also include use of CBL's (Calculator Based Labs), or probes with computer interfacing, and Internet collaboration.

*Credit Type:* SC3

## **AP® CHEMISTRY SC510**

2.0 (YEAR – with Lab)

*Prerequisite:* "B" or better in all semesters of Algebra I and Algebra II;  
*Teacher Signature*

*Grade Level(s):* 11, 12

This course will provide college-level chemistry instruction along with college-level laboratory experience. The course prepares students for the AP® exam in such a way that they will have the best possible chance for success. This course will be fast paced, in depth, rigorous and rewarding. Class includes a lab and is taught over two-block class periods.

*Credit Type:* SC3

## **PHYSICS SC310**

1.0 (YEAR)

*Prerequisite:* Geometry and Grade Level; May count as a 4th math credit for the Merit Distinction if the student has previously earned 3 math and 3 science credits.

*Grade Level(s):* 11, 12

Physics is a college preparatory course that studies the nature of matter, energy and their relationships. Those individuals who strive to form conceptual as well as mathematical models to describe everyday occurrences will enjoy this course's offerings. The course incorporates a balance of hands-on laboratory activities, intellectually stimulating discussions and assignments to reinforce knowledge. Students interested in careers in engineering, medicine, architecture, and mathematics should know that physics is usually a required college course. Taking the BHS or GHS physics course will prepare you well for your college physics course as well as strengthen math skills, logic skills, and analytical skills.

*Credit Type:* SC3 OR MATH

## **AP® PHYSICS SC520**

1.0 (YEAR)

*Prerequisites:* Physical Science, Biology, Geometry & (concurrently taking) Algebra II

*Grade Level(s):* 11, 12

AP® Physics is an algebra-based, introductory college-level physics course. Students cultivate their understanding of physics through inquiry-based investigations as they explore these topics: kinematics, dynamics, circular motion and gravitation, energy, momentum, simple harmonic motion, and

torque and rotational motion. AP Physics is a full-year course that is the equivalent of a first-semester introductory college course in algebra-based physics. Laboratory work places an emphasis on inquiry-based investigations that provide students with opportunities to demonstrate the foundational physics principles and apply the science practices as they design plans for experiments, make predictions, collect and analyze data, apply mathematical routines, develop explanations, and communicate about their work. The course is designed to prepare students for the AP Physics 1 exam, which is a college-level, algebra-based exam. Class is taught in a normal single class period.

*Credit Type:* SC3, MATH

## **ANATOMY & PHYSIOLOGY SC330**

1.0 (YEAR)

*Prerequisite:* Successful completion of Biology, grade "C" or better is highly recommended for student success

*Grade Level(s):* 11, 12

Anatomy & Physiology will introduce students to the structure and function of the human body. Topics such as the fundamental principles in organic and inorganic chemistry, cellular biology and histology will be covered as a foundation for exploration of each body system. In addition, students will study the integumentary, skeletal, muscular, nervous, cardiovascular, endocrine, respiratory, digestive and urinary systems. Class time will include laboratory investigations, clinical case studies, dissections, and lecture. This course is strongly recommended for students considering a career in the healthcare field as it will develop skills and knowledge necessary to successfully participate in rigorous college level Anatomy & Physiology courses.

*Credit Type:* GEN

## **ASTRONOMY SC345**

0.5 (SEM)

*Prerequisite:* Grade Level

*Grade Level(s):* 10, 11, 12

Astronomy students will study the wonders of the solar system and universe. Topics will include latest solar system discoveries, exoplanets, star evolution, galaxy types, cosmology, etc. Students will learn to use computer software for acquiring telescope images and spectra for solar and stellar research projects. Students are required to participate in some evening telescope viewing and data collecting sessions.

*Credit Type:* GEN

## **GEOLOGY SC350**

0.5 (SEM)

*Prerequisite:* Grade Level

*Grade Level(s):* 10, 11, 12

This semester long course will be an in-depth study of our physical planet. It will focus on inquiry and hands-on learning. It will cover plate tectonics, identification of rocks and minerals, interpretation of depositional environments using analysis of rock types, interpretation of topographic and geologic maps, aquifer studies, mountain building and geologic time.

*Credit Type:* GEN

## **AP® ENVIRONMENTAL SCIENCE SC340**

1.0 (YEAR)

*Prerequisite: GeoPhysical Science, Biology, and Algebra I*

*Grade Level(s): 11, 12*

The AP Environmental Science course is designed to engage students with the scientific principles, concepts, and methodologies required to understand the interrelationships within the natural world. The course requires that students identify and analyze natural and human-made environmental problems, evaluate the relative risks associated with these problems, and examine alternative solutions for resolving or preventing them. Environmental science is interdisciplinary, embracing topics from geology, biology, environmental studies, environmental science, chemistry, and geography.

*Credit Type: SC3, GEN*

## **WILDLIFE BIOLOGY - FALL SC320**

0.5 (SEM - FALL)

*Prerequisite: Biology*

*Grade Level(s): 11, 12*

Wildlife Biology students will study the incredible diversity of mammals, birds, and fish of Montana. Numerous field trips will be offered for extra credit. Students may attend either or both semesters. We will focus on identification, survival strategies, present population status, habitat requirements, and management challenges for the following species: Fall Semester – wolves, wolverine, elk, bighorn sheep, deer, trout, raptors, owls, upland game birds, and songbirds.

*Credit Type: GEN*

## **WILDLIFE BIOLOGY - SPRING SC325**

0.5 (SEM - SPRING)

*Prerequisite: Biology*

*Grade Level(s): 11, 12*

See course description above. Spring Semester – grizzly bears, mountain lions, bison, moose, mountain goats, swans, geese, ducks, and songbirds.

*Credit Type: GEN*

## **INDEPENDENT STUDY - PROBLEMS IN SCIENCE**

1.0 (YEAR)

*Prerequisite: Biology, Grade Level, and Consent of Instructor*

*Grade Level(s): 11, 12*

This is a special problem study in science with no regular class period scheduled. Research should be geared toward presenting a formal paper or science.

Course can be repeated for credit.

*Credit Type: GEN*

## SOCIAL STUDIES

Grade Level	Required Courses (credit)	Credit Type
9 <sup>th</sup>	World Geography (1.0) <b>OR</b> World Geography GATE (1.0)	SS1
10 <sup>th</sup>	No course requirement (see options below)	
11 <sup>th</sup>	U.S. History (1.0) <b>OR</b> AP U.S. History (1.0) [taught in a combo course with English III or English III Honors]	USHIST
12 <sup>th</sup>	U.S. Government (0.5) <b>OR</b> AP U.S. Government and Politics (0.5) <b>AND</b> Social Studies Elective [Social Studies Elective options are: <i>*Economics</i> (0.5); Human Geography (0.5); Native American Studies (0.5); Philosophy (0.5); <i>*AP</i> <i>Microeconomics</i> (0.5); and AP Human Geography (1.0)]	USGOVT SSEL

*\*Meets (2025-26) Requirement for Financial Literacy*

*Note: Native American Studies, AP Human Geography, and AP Microeconomics can be taken in 11th grade*

Grade Level	General Elective Courses (credit)	Credit Type
10 <sup>th</sup>	World History (1.0) <b>OR</b> AP World History (1.0) [AP World History is taught in a combo course with English II Honors]	GEN
11 <sup>th</sup> -12 <sup>th</sup>	Law and Justice (0.5); Psychology (0.5); AP Psychology (1.0)	GEN

### WORLD GEOGRAPHY SS130

1.0 (YEAR)

*Prerequisite: None*

*Grade Level(s): 9*

Freshman World Geography is an introductory social studies course. This course emphasizes geographic reasoning based on knowledge of Earth's physical and human features, including the locations of places and regions, the distribution of landforms and water bodies, and historic changes in political boundaries, economic activities, and cultures. Thinking geographically requires knowing that the world is a set of complex ecosystems interacting at multiple scales that structure the spatial patterns and processes that influence our daily lives. Geographic reasoning brings societies and nature under the lens of spatial analysis, and aids in personal and societal decision-making and problem solving. Regions explored will include Canada and the United States, Latin America, Africa, Europe and Russia, Southwest and Central Asia, Monsoon Asia, and Oceania and Antarctica. Students will investigate local and global problems, identify personal connections, and seek solutions to current local, regional, and world challenges. This course is required for graduation.

*Credit Type: SS1*

### WORLD GEOGRAPHY (GATE) SS135

1.0 (YEAR)

*Prerequisite: (Restricted Entry) GATE identified students, or recommendation based on teacher referral and additional qualifications*

*Grade Level(s): 9*

World Geography (GATE) features more challenging reading, writing and critical thinking exercises for 9th grade students.

*Credit Type: SS1*

### WORLD HISTORY SS200

1.0 (YEAR)

*Prerequisite: None*

*Grade Level(s): 10, 11, 12*

World History is a yearlong Sophomore level social studies elective. In World History students will connect the past with the present, and look to the future, of their own lives and the entire human race. Students will explore cultures across time to discover their contributions, context, and significance in politics, philosophy, technology, economics, literature and the arts. Students will use primary and secondary sources, cooperative learning, presentations, and analytical writing, historical thinking and research skills to gain a greater appreciation of various global cultures.

*~Although not required for graduation from Bozeman high schools, many colleges/universities require World History for admission.*

### AP® WORLD HISTORY (COMBO) SS225

1.0 (YEAR)

*Prerequisite: English I and Teacher Signature*

*Grade Level(s): 10*

Advanced Placement World History/Honors English II (combo) qualifies as a sophomore level elective class and is team-taught by an English teacher and a Social Studies teacher in a two-period block. This cross-curricular class is a chronological study of world history that conveys a more complex and sophisticated portrait of the world's fascinating past and rich cultural heritage by integrating literature, art, music, and architecture. Students produce college-level essays, document-based responses, and research projects. They also refine their speaking, listening, reading, critical thinking, and group interactive skills. Emphasis is placed on preparing for the Advanced Placement World History exam, which allows for university/college credit in most post-secondary programs.

*Credit Type: GEN*

## **U.S. HISTORY (COMBO) SS375**

1.0 (YEAR)

*Prerequisite: English II*

*Grade Level(s): 11*

US History/English III Combo is a required junior level class that is team-taught in a two-period block by an English teacher and a Social Studies teacher. This cross-curricular class integrates the study of American literature and American history so that students can develop more sophisticated understandings of the past while improving their historical thinking, research, and communication skills. Just as it is impossible to undertake a meaningful study of American history without understanding the poetry and prose that both drive and chronicle it, one cannot truly comprehend the power behind the words of America's writers without understanding the context of the times in which they wrote. Students will investigate significant individuals, groups, places, documents, literature, and ideas to gain a greater appreciation for the American experience. This class fulfills the History and English requirements for junior year (1 credit English III, and 1 credit U.S. History). Required course for all juniors/exception-see AP US History Combo.

*Credit Type: USHIST*

## **AP® U.S. HISTORY (COMBO) SS385**

1.0 (YEAR)

*Prerequisite: English II and Teacher Signature*

*Grade Level(s): 11*

Advanced Placement US History/Honors English III (combo) qualifies as a required junior level class that is team-taught in a two-period block by an English teacher and a Social Studies teacher. This cross-curricular class is a chronological study of United States history that integrates literature, art, music, and architecture in order to convey a more complex and sophisticated portrait of America's fascinating past and rich cultural heritage. During the year, students produce college-level essays, document-based responses, and research projects. They also refine critical historical thinking, speaking, listening, reading and group interactive skills. Emphasis will be placed on preparing for the Advanced Placement U.S. History exam, which allows for university/college credit in most post-secondary programs. The course fulfills the history and English requirements for junior year. (1 credit Honors English III, and 1 credit AP U.S. History).

*Credit Type: USHIST*

## **U.S. GOVERNMENT SS400**

0.5 (SEM)

*Prerequisite: Grade Level*

*Grade Level(s): 12*

US Government is a senior level capstone course. This course emphasizes that government is a means for addressing common public problems by utilizing the political system established by the U.S. Constitution. Students will understand the importance of the founding principles of democracy, comparative political and economic systems, the media's role in the political process, the branches of federal government, and civil rights and civil liberties. Students will also explore the techniques available to citizens for preserving and changing society through productive civic engagement. Students will address public issues individually and collaboratively in order to maintain and strengthen communities through informed practices such as voting, volunteering, and civic action. This is a required course for graduation.

*Credit Type: USGOV*

## **AP® U.S. GOVERNMENT & POLITICS SS522**

0.5 (SEM - FALL)

*Prerequisite: Grade Level*

*Grade Level(s): 12*

AP U.S. Government and Politics provides a college-level, nonpartisan introduction to key political concepts, ideas, institutions, policies, interactions, roles, and behaviors that characterize the constitutional system and political culture of the United States. Students will study U.S. foundational documents, Supreme Court decisions, and other texts and visuals to gain an understanding of the relationships and interactions among political institutions, processes, and behaviors. They will also engage in disciplinary practices that require them to read and interpret data, make comparisons and applications, and develop evidence-based arguments. In addition, they will complete a political science research or applied civics project.

*Credit Type: USGOV*

## **ECONOMICS SS420**

0.5 (SEM)

*Prerequisite: Grade Level*

*Grade Level(s): 12*

Economics is a semester course that meets the senior elective requirement. This course will emphasize an understanding of the ways in which individuals, businesses, governments, and societies make decisions to allocate human capital, physical capital, and natural resources among alternative uses. This course provides students with the concepts and tools necessary for an economic way of thinking and helps students understand the interaction of buyers and sellers in markets, workings of the national economy, and interactions within the global marketplace. This course will meet the requirement (for 25-26) for Financial Literacy course.

*Credit Type: SSEL*

## **AP® MICROECONOMICS SS530**

0.5 (SEM)

*Prerequisite: Grade Level*

*Grade Level(s): 11, 12*

Microeconomics is a semester course that meets the senior elective requirement. The purpose of an AP course in microeconomics is to give students a thorough understanding of the principles of economics that apply to the decisions of consumers, producers, and businesses on their allocation of human capital, physical capital, and natural resources among alternative uses within the larger economy. Emphasis will be placed on preparing for the Advanced Placement Microeconomics Exam which allows for university/college credit in most post-secondary programs. This course will meet the requirement (for 25-26) for Financial Literacy course.

*Credit Type: SSEL*

## **HUMAN GEOGRAPHY SS430**

0.5 (SEM)

*Prerequisite: Grade Level*

*Grade Level(s): 12*

Human Geography is a semester course that meets the senior elective requirement. Human Geography is the study of the interaction between humans and their environment and will encourage you to investigate the world. The main questions we will ask in the course are: What is where, why there, and why care? We will study the topics of demographics, migration, globalization, language, agriculture, economic and social development, and urban structure.

*Credit Type: SSEL*

## **AP® HUMAN GEOGRAPHY SS540**

1.0 (YEAR)

*Prerequisite: Grade Level*

*Grade Level(s): 11, 12*

AP Human Geography is a yearlong course that meets the senior elective requirement. Human Geography is the study of the interaction between humans and their environment and will encourage you to investigate the world. The main questions we will ask in the course are: What is where, why there, and why care? Units of study include population, migration, culture, language, religion, ethnicity, political geography, economic development, industry, agriculture, and urban geography. Emphasis is placed on geographic models and their applications. Upon successful completion of this course, students will be prepared for the College Board AP Human Geography exam in May.

*Credit Type: SSEL*

## **NATIVE AMERICAN STUDIES SS330**

0.5 (SEM)

*Prerequisite: Grade Level*

*Grade Level(s): 11, 12*

Native American Studies is a course with an emphasis on Native American histories, literature/arts, and contemporary issues. This course examines the many regional cultures of Native peoples in the Americas from pre-Columbian times to the present day. A special emphasis will be placed on Montana's Indian nations. To the greatest extent possible, course content would prioritize Native voices through primary sources, works of literature and film, guest speakers, and field trips. Higher level thinking skills, communications skills and primary source analysis will be emphasized.

*Credit Type: SSEL*

## **PHILOSOPHY SS440**

0.5 (SEM)

*Prerequisite: Grade Level*

*Grade Level(s): 12*

Philosophy is a semester course that meets the senior elective requirement. This course explores the various branches of philosophy and influential thinkers who have impacted history, culture, literature and life itself. This class presents students the opportunity to bridge the ideas taught in class and connect them to their own lives. Students will work to hone their critical thinking, public speaking, reading and conversation skills. Special attention will be placed on interacting with multiple texts. Discussion and writing assignments will evaluate the nature of reality and knowledge, as well as uncover the link between ideas, politics, art and ethics in the search for meaning. Students will gain valuable insight into their own lives that will require contemplative thinking, reading and writing.

*Credit Type: SSEL*

## **LAW & JUSTICE SS335**

0.5 (SEM)

*Prerequisite: Grade Level*

*Grade Level(s): 11, 12*

In a fully functioning constitutional democracy, citizens must be informed and stay informed of the world around themselves. An important part of being fully informed requires an understanding of how our government is set up and how it functions. Law & Justice focuses on the legal element of our established government and serves as an introductory course for the law and legal systems within the United States. This semester-long

elective course provides students with the ability to navigate and understand the law, legal systems, and how it affects all of us in everyday life. The scope of content for this course includes Constitutional Law, civil law, criminal law, the criminal justice process, as well as other topics based upon student interest. We will use case studies, individual research, group discussions, debates, field trips, guest speakers, and a mock trial throughout the course in order to reach this goal. Dueling opinions and lively debate will be the norm in this course making the class exciting, relevant, and applicable.

*Credit Type: GEN*

## **PSYCHOLOGY SS320**

0.5 (SEM)

*Prerequisite: Grade Level*

*Grade Level(s): 11, 12*

Psychology is a junior and senior elective. Psychology is the study of human behavior and mental processes. The course begins with an overview of historical psychologists and their contributions to psychology. It later moves into the brain and biological causes of behavior. As the scientific study of behavior and mental processes, psychology examines all aspects of the human experience. Many of society's challenging issues involve human behavior, such as environmental change and the problems of violence, bullying, prejudice, and discrimination. Psychology contributes to the understanding of these issues and promotes improvement in health and wellbeing. Psychological literacy is a foundation for civic engagement and is necessary for citizens to make informed decisions about their daily lives. Other areas of study include motivation, emotion, learning, and memory. Psychology does not meet the Social Studies senior elective requirement for graduation. This course is not intended for students planning to enroll in AP Psychology.

*Credit Type: GEN*

## **AP® PSYCHOLOGY SS535**

1.0 (YEAR)

*Prerequisite: Grade Level*

*Grade Level(s): 11, 12*

AP Psychology is a year-long junior/senior elective class that fulfills a general elective credit. As the scientific study of behavior and mental processes, psychology examines all aspects of the human experience. Many of society's challenging issues involve human behavior, such as environmental change and the problems of violence, bullying, prejudice, and discrimination. Psychology contributes to the understanding of these issues and promotes improvement in health and wellbeing. Psychology incorporates a variety of tools and knowledge to further the understanding of behavior and mental processes. Scientific inquiry and research methods are at the center of the discipline. Psychological knowledge enhances our understanding of human development, emotion and motivation, cognition, learning processes, perceptual systems and sociocultural interactions. College credit may be earned with the successful completion of the AP Exam. AP Psychology does not meet the Social Studies senior elective requirement for graduation.

*Credit Type: GEN*



## SPECIALIZED PROGRAMS

Listed below are the course offerings available through the Special Education Department for students who have been identified with an educational disability and in need of specialized instruction. Eligibility and placement in the following classes are determined by the student's Individualized Education Plan.

### ESSENTIALS FOR LEARNING SP100

1.0 (YEAR)

*Prerequisite:* IEP team recommendation

*Grade Level(s):* 9, 10, 11, 12

Essentials for Learning is specifically designed to meet the unique needs of each student, as outlined in their Individualized Education Program (IEP). The learning environment is structured to foster the development of essential skills, including academics, social interactions, independence, vocational readiness, and community engagement. Overarching goals of a student's IEP include targeting the skills necessary to access the general education environment and to equip students with the necessary tools and knowledge to pursue their post-secondary goals (e.g. higher education, vocational training, or other career readiness skills). Instruction is individualized and provided to students based on their unique needs and goals as determined by their IEP team. To achieve this, teachers utilize diagnostic assessments, progress monitoring, and data-driven instruction to identify individual needs and tailor appropriate interventions. Additionally, special education teachers may coordinate with related service providers (e.g. speech, occupational therapy, school psychologist) to ensure comprehensive support, as outlined in each student's IEP.

*Credit Type:* GEN

---

### THE APPLIED SKILLS PROGRAM

The Applied Skills Program offers full instruction in academics, behavior, and social interactions. Courses in the Applied Skills Program follow a modified regular education curriculum. The main focus of the program is to aid each student in his/her individual academic, behavioral, and social areas of need through the integration of social/behavioral skills and academics. Students are placed in the program through the IEP team process

---

### COLLEGE, CAREER, AND COMMUNITY READINESS PROGRAMMING

---

The College, Career, and Community Readiness (CCCR) program offers classes focusing on communicative competence, reading, writing, math, social skills, independent work behaviors, problem solving, and assistance seeking behaviors. Students are placed in the following classes through the IEP team process.

### CORE CONTENT ENGLISH LANGUAGE ARTS (CCCR) SP242-244

1.0 (YEAR)

*Prerequisite:* See CCCR Introduction

*Grade Level(s):* 9, 10, 11, 12

This course focuses on developing critical reading, writing and communication skills, based on the key "big ideas" of grade level standards. Individualized skill instruction will be provided for students working significantly below grade level. This course focuses on developing vocabulary, reading, spelling, writing,

listening and speaking skills for college, career and community readiness. Use of technology is incorporated into this class.

*Course can be repeated for credit.*

*Credit Type:* LA1, LA2, LA3, LA4

### CORE CONTENT MATH (CCCR) SP232-234

1.0 (YEAR)

*Prerequisite:* See CCCR Introduction

*Grade Level(s):* 9, 10, 11, 12

This course focuses on developing mathematics skills, based on the key "big ideas" of grade level standards. Individualized skill instruction will be provided for students working significantly below grade level. This course focuses on developing functional application of geometry and algebra concepts, as well as measurement, data, and real-world problem solving for college, career and community readiness. Use of technology is incorporated into this class.

*Course can be repeated for credit.*

*Credit Type:* MATH

### CORE CONTENT SCIENCE & SOCIAL STUDIES (CCCR) SP238

1.0(YEAR)

*Prerequisite:* See CCCR Introduction

*Grade Level(s):* 9, 10, 11, 12

This combo course will focus on developing an understanding of the "big ideas" of grade level standards in science and social studies, along with the functional application of science and social studies concepts.

*Credit Type:* SCI, SC2, SSI, FLEX

### VOCATIONAL SKILLS (CCCR) SP201

1.0 (YEAR)

*Prerequisite:* See CCCR Introduction

*Grade Level(s):* 9, 10, 11, 12

This course will include classroom and community supervised vocational experiences within the school day. The course will be individualized based on grade and skill level. Students will gain work experience in the classroom which may include: learning single or multi-step activities that are applicable in a work setting, comprehension of tasks, response to directions, work quality, work production and rate, vocational vocabulary, appropriate work behavior, interpersonal skills, and writing a resume or developing a portfolio.

*Course can be repeated for credit.*

*Credit Type:* CTE

### COLLEGE, CAREER, COMMUNITY READINESS (CCCR)

1.0-2.0 (YEAR)

*Prerequisite:* See CCCR Introduction

*Grade Level(s):* 9, 10, 11, 12

This class will focus on life skills, social skills, independent work behaviors, problem solving, and assistance seeking behaviors the student will need to be successful in a college, a career, or the community. Topics include problem solving, positive interaction techniques, self-regulation of behavior, following rules, social

response, social cues, getting assistance, expressing feelings and preferences, social nuances, appropriate sexual behavior, appearance, friendships, and relationships. These skills will be taught at school as well as in the community.

*Credit Type: CTE*

## **ADAPTED HEALTH ENHANCEMENT (CCCR) SP152**

1.0 (YEAR)

*Prerequisite: See CCCR Introduction*

*Grade Level(s): 9, 10, 11, 12*

This class has been modified to meet the needs of students with disabilities. The purpose of this course is to provide a wide variety of activities offered in health enhancement. Activities will include working on physical skills, gross and fine motor tasks, fundamental motor skills and patterns, group activities, lifetime recreational sports, and personal goals and objectives. Pass/Fail grading.

*Course can be repeated for credit.*

*Credit Type: HE1, HE2*

## **INDEPENDENT SUPERVISED INSTRUCTION SP140**

0.5 (SEM)

*Prerequisite: Teacher recommendation*

*Grade Level(s): 9, 10, 11, 12*

This is an independent course of study determined on the Individualized Education Program. A grade is assigned based on the criteria established on the IEP and the student must attend one class period per day.

*Credit Type: GEN*



## WORLD LANGUAGES

### DID YOU KNOW?

Many universities require 2-4 years of language study for admission.

Language classes count toward Merit and Humanities Diploma Distinctions as well as FLEX & General Elective credits.

You can receive college credit for Level IV and AP World Language classes.

### FRENCH I FL100

1.0 (YEAR)

*Prerequisite:* Curiosity and desire to understand Francophone culture and communicate using the French language. Students who have demonstrated proficiency at the Novice High-level will be enrolled in French II.

*Grade Level(s):* 9, 10, 11, 12

This communication and culture course is intended for students with no prior knowledge of French. Students will explore various aspects of the Francophone world as they develop communication skills. By the end of this course, students will be able to communicate about themselves, their community, and their everyday life using simple sentences. This course focuses on attaining a Novice High language proficiency level in all major modes of communication: interpersonal (conversations), presentational (writing & speaking), and interpretive (reading & listening).

*Credit Type:* WL, FLEX

### FRENCH II FL200

1.0 (YEAR)

*Prerequisite:* Students entering French II must have successfully completed French I or be able to demonstrate language performance at or above the Novice High-level on familiar topics.

*Grade Level(s):* 9, 10, 11, 12

French II is a communication and culture course designed to transition students from the Novice to Intermediate Low language proficiency level. At this level students begin to be able to say more of what they want to say without relying so much on memorized words and phrases. Students will continue to explore Francophone culture around the world as they dive deeper into describing their lives and learning about the lives of others, while reinforcing skills in all major modes of communication.

*Credit Type:* WL, FLEX

### FRENCH III FL300

1.0 (YEAR)

*Prerequisite:* Students entering French III must have successfully completed French II or be able to demonstrate language performance at or above the Intermediate Low-level on a variety of familiar topics.

*Grade Level(s):* 9, 10, 11, 12

French III is a communication and culture course designed to solidify students' Intermediate language skills. Students will work with a variety of authentic resources to explore the products, practices, and perspectives of Francophone communities around the world as they continue to grow in their knowledge of other cultures and abilities to communicate in French.

*Credit Type:* WL, FLEX

### FRENCH IV FL400

1.0 (YEAR)

*Prerequisite:* Students entering French IV must have successfully completed French III or be able to demonstrate language performance

at or above the Intermediate Low-level on a variety of topics.

*Grade Level(s):* 9, 10, 11, 12

French IV is a communication and culture course that continues to develop Intermediate skills while diving into topics of public interest. In this course, students take their communication skills up a notch as they focus on the use of expressions, complex sentences, and paragraphs to communicate their thoughts, opinions and experiences. As students continue to work with authentic texts, they will focus on developing their ability to draw conclusions from and make connections between them. Students completing French IV with an 85% or higher should be able to start college French at the third semester level.

**\*Dual Enrollment Course. Students may have the option to earn Montana University System credit upon successful completion of this course. Please reference Dual-Enrollment page for additional information.**

*Credit Type:* WL, FLEX

### AP® FRENCH LANGUAGE & CULTURE FL500

1.0 (YEAR)

*Prerequisite:* Students entering AP French must have successfully completed French IV or be able to demonstrate language performance at or above the Intermediate Mid-level on a variety of topics of personal and public interest.

*Grade Level(s):* 10, 11, 12

AP® French is a demanding course that is equivalent to a 5th-semester college language course. The class is designed to transition students from the Intermediate Mid to the Intermediate High language proficiency level through in-depth study of the Francophone cultures. As students continue to advance in the sophistication of their language, they begin to develop a sense of ease and confidence in communication. They will be able to state and support personal views in discussions and writing, converse about routine tasks and personal interests, and understand complex authentic audio and written texts on a variety of topics. This course culminates with the Advanced Placement® French Language and Culture Exam. A score of 3, 4 or 5 on this exam will earn college credit at most universities and place students in a second- or third-year university course.

**\*Dual Enrollment Course. Students may have the option to earn Montana University System credit upon successful completion of this course. Please reference Dual-Enrollment page for additional information.**

*Credit Type:* WL, FLEX

### GERMAN I FL110

*Grade Level(s):* 9, 10, 11, 12

This communication and culture course is intended for students with no prior knowledge of German. Students will explore various aspects of the German-speaking world as they develop communication skills. By the end of this course, students will be able to communicate about themselves, their community, and their everyday life using simple sentences. This course focuses on attaining a Novice High language

proficiency level in all major modes of communication: interpersonal (conversations), presentational (writing & speaking), and interpretive (reading & listening).

*Credit Type: WL, FLEX*

## GERMAN II FL210

### 1.0 (YEAR)

*Prerequisite: Students entering German II must have successfully completed German I or be able to demonstrate language performance at or above the Novice High-level on familiar topics.*

*Grade Level(s): 9, 10, 11, 12*

German II is a communication and culture course designed to transition students from the Novice to Intermediate Low language proficiency level. At this level, students begin to be able to say more of what they want to say without relying so much on memorized words and phrases. Students will continue to explore German-speaking culture as they dive deeper into describing their lives and learning about the lives of others, while reinforcing skills in all major modes of communication.

*Credit Type: WL, FLEX*

## GERMAN III FL310

### 1.0 (YEAR)

*Prerequisite: Students entering German III must have successfully completed German II or be able to demonstrate language performance at or above the Intermediate Low-level on a variety of familiar topics.*

*Grade Level(s): 9, 10, 11, 12*

German III is a communication and culture course designed to solidify students' Intermediate language skills. Students will work with a variety of authentic resources to explore the products, practices, and perspectives of German-speaking communities around the world as they continue to grow in their knowledge of other cultures and abilities to communicate in German.

*Credit Type: WL, FLEX*

## GERMAN IV FL410

### 1.0 (YEAR)

*Prerequisite: Students entering German IV must have successfully completed German III or be able to demonstrate language performance at or above the Intermediate Low-level on a variety of topics.*

*Grade Level(s): 9, 10, 11, 12*

German IV is a communication and culture course that continues to develop Intermediate skills while diving into topics of public interest. In this course, students take their communication skills up a notch as they focus on the use of expressions, complex sentences, and paragraphs to communicate their thoughts, opinions and experiences. As students continue to work with authentic texts, they will focus on developing their ability to draw conclusions from and make connections between them. Students completing German IV with an 85% or higher should be able to start college German at the third semester level.

**\*Dual Enrollment Course. Students may have the option to earn Montana University System credit upon successful completion of this course. Please reference Dual-Enrollment page for additional information.**

*Credit Type: WL, FLEX*

## AP® GERMAN LANGUAGE & CULTURE FL510

### 1.0 (YEAR)

*Prerequisite: Students entering AP® German must have successfully completed German IV or be able to demonstrate language performance at or above the Intermediate Mid-level on a variety of topics of personal and public interest.*

*Grade Level(s): 10, 11, 12*

AP® German is a demanding course that is equivalent to a 5th-semester college language course. The class is designed to transition students from the Intermediate Mid to the Intermediate High language proficiency level through in-depth study of German-speaking cultures. As students continue to advance in the sophistication of their language, they begin to develop a sense of ease and confidence in communication. They will be able to state and support personal views in discussions and writing, converse about routine tasks and personal interests, and understand complex authentic audio and written texts on a variety of topics. This course culminates with the Advanced Placement® German Language and Culture Exam. A score of 3, 4, or 5 on this exam will earn college credit at most universities and place students in a second- or third-year university course.

**\*Dual Enrollment Course. Students may have the option to earn Montana University System credit upon successful completion of this course. Please reference Dual-Enrollment page for additional information.**

*Credit Type: WL, FLEX*

## SPANISH I FL120

### 1.0 (YEAR)

*Prerequisite: Curiosity and desire to understand Spanish-speaking cultures and communicate using the Spanish language. Students who have demonstrated proficiency at the Novice High-level will be enrolled in Spanish II.*

*Grade Level(s): 9, 10, 11, 12*

This communication and culture course is intended for students with no prior knowledge of Spanish. Students will explore various aspects of the Spanish-speaking world as they develop communication skills. By the end of this course, students will be able to communicate about themselves, their community, and their everyday life using simple sentences. This course focuses on attaining a Novice High language proficiency level in all major modes of communication: interpersonal (conversations), presentational (writing & speaking), and interpretive (reading & listening).

*Credit Type: WL, FLEX*

## SPANISH II FL220

### 1.0 (YEAR)

*Prerequisite: Students entering Spanish II must have successfully completed Spanish I or be able to demonstrate language performance at or above the Novice High-level on familiar topics.*

*Grade Level(s): 9, 10, 11, 12*

Spanish II is a communication and culture course designed to transition students from the Novice to Intermediate Low language proficiency level. At this level students begin to be able to say more of what they want to say without relying so much on memorized words and phrases. Students will continue to explore Spanish-speaking cultures as they dive deeper into describing their lives and learning about the lives of others, while reinforcing skills in all major modes of communication.

*Credit Type: WL, FLEX*

## SPANISH III FL320

1.0 (YEAR)

*Prerequisite:* Students entering Spanish III must have successfully completed Spanish II or be able to demonstrate language performance at or above the Intermediate Low-level on a variety of familiar topics.

*Grade Level(s):* 9, 10, 11, 12

Spanish III is a communication and culture course designed to solidify students' Intermediate language skills. Students will work with a variety of authentic resources to explore the products, practices, and perspectives of Spanish-speaking communities around the world as they continue to grow in their knowledge of other cultures and abilities to communicate in Spanish.

*Credit Type:* WL, FLEX

## SPANISH IV FL420

1.0 (YEAR)

*Prerequisite:* Students entering Spanish IV must have successfully completed Spanish III or be able to demonstrate language performance at or above the Intermediate Low-level on a variety of topics.

*Grade Level(s):* 9, 10, 11, 12

Spanish IV is a communication and culture course that continues to develop Intermediate skills while diving into topics of public interest. In this course, students take their communication skills up a notch as they focus on the use of expressions, complex sentences, and paragraphs to communicate their thoughts, opinions and experiences. As students continue to work with authentic texts, they will focus on developing their ability to draw conclusions from and make connections between them. Students completing Spanish IV with an 85% or higher should be able to start college Spanish at the third semester level.

**\*Dual Enrollment Course. Students may have the option to earn Montana University System credit. Please reference Dual-Enrollment page for additional information.**

*Credit Type:* WL, FLEX

## AP® SPANISH LANGUAGE & CULTURE FL520

1.0 (YEAR)

*Prerequisite:* Students entering AP® Spanish must have successfully completed Spanish IV or be able to demonstrate language performance at or above the Intermediate Mid-level on a variety of topics of personal and public interest.

*Grade Level(s):* 10, 11, 12

AP® Spanish is a demanding course that is equivalent to a 5th-semester college language course. The class is designed to transition students from the Intermediate Mid to the Intermediate High language proficiency level through in-depth study of Spanish-speaking cultures. As students continue to advance in the sophistication of their language, they begin to develop a sense of ease and confidence in communication. Students will be able to state and support personal views in discussions and writing, converse about routine tasks and personal interests, and understand complex authentic audio and written texts on a variety of topics. This course culminates with the Advanced Placement® Spanish Language and Culture Exam. A score of 3, 4 or 5 on this exam will earn college credit at most universities and place students in a second- or third-year university course.

**\*Dual Enrollment Course. Students may have the option to earn Montana University System credit upon successful completion of this course. Please reference Dual-Enrollment page for additional information.**

*Credit Type:* WL, FLEX

## SPANISH FOR HERITAGE LEARNERS FL327

1.0 (YEAR)

*Prerequisite:* Heritage Spanish Learner at an Intermediate Mid-level for speaking and listening.

*Grade Level(s):* 10, 11, 12

**Definition of Heritage Language Learner:** Student who has been raised with a strong cultural connection to Spanish, usually through family interaction. A heritage learner speaks, or at least understands the language and is to some degree bilingual in that language and in English.

The main purpose of the Spanish for Heritage Learners class is to build upon the language knowledge that students bring to the classroom and advance their proficiency in Spanish for multiple contexts. A focus of the class will be reading a variety of texts and improving Spanish writing skills. The class will recognize and celebrate each student's cultural heritage and will promote their biculturalism, bilingualism and biliteracy. Taught exclusively in Spanish, this course is designed for heritage or native speakers only. Students will have the opportunity to take the STAMP 4S test to demonstrate Spanish proficiency to qualify for the Montana Seal of Biliteracy.

**\*Dual Enrollment Course. Students may have the option to earn Montana University System credit. Please reference Dual-Enrollment page for additional information.**

*Credit Type:* WL, FLEX

## WORLD LANGUAGE PRACTICUM ABROAD FL240

0.5 (N/A)

*Prerequisite:* Successful completion of at least two years of study in the target language.

*Grade Level(s):* 11, 12

Periodically students of French, German, and Spanish have the opportunity to earn credit in their language through participation in an overseas travel experience with a BHS or GHS language instructor or recognized study-abroad program. To receive credit, the following requirements must be met: 1) The student shall complete a minimum of 75 hours of engagement with the language, history, and culture of the target language country or countries; 2) Additional requirements shall be met such as presentations, a journal or research project, as determined by the sponsoring teacher or study-abroad organization. Note: Course is offered on a Pass/Fail basis. This practical experience in the language is not to serve as a substitute for, nor will it replace regular language study.

*Credit Type:* WL, FLEX



# Graduation Credit Tracker



Name: \_\_\_\_\_

Credits Earned: \_\_\_\_\_

Credits Needed: \_\_\_\_\_

		S1	S2
ENGLISH (4.0)	English I		
	English II		
	English III Combo		
	English IV/ English Elective		
MATH (3.0)			
SCIENCE (2.0)	GeoPhysical Science		
	Biology		
SOCIAL STUDIES (3.0)	World Geography		
	US History		
	Government/Social Studies Elective		
HEALTH ENH. (2.0)	HE 9		
	HE 10		
FINE ARTS (1.0)			
CTE (1.0)			
FLEX (1.0)			
ELECTIVE			
ELECTIVE			
ELECTIVE			
ELECTIVE			
ELECTIVE			
ELECTIVE			
ELECTIVE			
ELECTIVE			

☐ 0.5 Financial Literacy Credit (Financial Survival, Economics, AP Micro)

\*\*Financial Literacy Requirement begins with the graduating class of 2026

# High School Bell Schedule

## Week 1

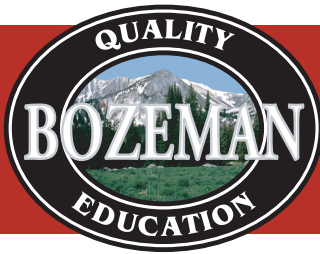
	Monday Red or Blue	Tuesday Black	Wednesday Red or Blue	Thursday Black	Friday Red or Blue														
8:25-9:45	1 (Red/Blu)	1 (Blk)	<table><tr><td>8:00-9:30</td><td>Teacher Collaboration</td></tr><tr><td>9:35-10:50</td><td>1 (Red/Blu)</td></tr><tr><td>10:50-11:00</td><td>School TV</td></tr><tr><td>11:05-12:20</td><td>2 (Red/Blu)</td></tr><tr><td>12:20-1:00</td><td>Lunch</td></tr><tr><td>1:00-2:15</td><td>3 (Red/Blu)</td></tr><tr><td>2:20-3:35</td><td>4 (Red/Blu)</td></tr></table>	8:00-9:30	Teacher Collaboration	9:35-10:50	1 (Red/Blu)	10:50-11:00	School TV	11:05-12:20	2 (Red/Blu)	12:20-1:00	Lunch	1:00-2:15	3 (Red/Blu)	2:20-3:35	4 (Red/Blu)	1 (Blk)	1 (Red/Blu)
8:00-9:30	Teacher Collaboration																		
9:35-10:50	1 (Red/Blu)																		
10:50-11:00	School TV																		
11:05-12:20	2 (Red/Blu)																		
12:20-1:00	Lunch																		
1:00-2:15	3 (Red/Blu)																		
2:20-3:35	4 (Red/Blu)																		
9:45-9:50	Homeroom	Homeroom		Homeroom															
9:55-10:35	Intervention/ Extension	Intervention/ Extension		Intervention/ Extension	Intervention/ Extension														
10:40-12:00	2 (Red/Blu)	2 (Blk)		2 (Blk)	2 (Red/Blu)														
12:00-12:50	Lunch	Lunch		Lunch	Lunch														
12:50-2:10	3 (Red/Blu)	3 (Blk)		3 (Blk)	3 (Red/Blu)														
2:15-3:35	4 (Red/Blu)	4 (Blk)		4 (Blk)	4 (Red/Blu)														

## Week 2

	Monday Black	Tuesday Red or Blue	Wednesday Black	Thursday Red or Blue	Friday Black														
8:25-9:45	1(Blk)	1(Red/Blu)	<table><tr><td>8:00-9:30</td><td>Teacher Collaboration</td></tr><tr><td>9:35-10:50</td><td>1(Blk)</td></tr><tr><td>10:50-11:00</td><td>School TV</td></tr><tr><td>11:05-12:20</td><td>2(Blk)</td></tr><tr><td>12:20-1:00</td><td>Lunch</td></tr><tr><td>1:00-2:15</td><td>3(Blk)</td></tr><tr><td>2:20-3:35</td><td>4(Blk)</td></tr></table>	8:00-9:30	Teacher Collaboration	9:35-10:50	1(Blk)	10:50-11:00	School TV	11:05-12:20	2(Blk)	12:20-1:00	Lunch	1:00-2:15	3(Blk)	2:20-3:35	4(Blk)	1(Red/Blu)	1(Blk)
8:00-9:30	Teacher Collaboration																		
9:35-10:50	1(Blk)																		
10:50-11:00	School TV																		
11:05-12:20	2(Blk)																		
12:20-1:00	Lunch																		
1:00-2:15	3(Blk)																		
2:20-3:35	4(Blk)																		
9:45-9:50	Homeroom	Homeroom	Homeroom	Homeroom															
9:55-10:35	Intervention/ Extension	Intervention/ Extension	Intervention/ Extension	Intervention/ Extension															
10:40-12:00	2(Blk)	2(Red/Blu)	2(Red/Blu)	2(Blk)															
12:00-12:50	Lunch	Lunch	Lunch	Lunch															
12:50-2:10	3(Blk)	3(Red/Blu)	3(Red/Blu)	3(Blk)															
2:15-3:35	4(Blk)	4(Red/Blu)	4(Red/Blu)	4(Blk)															

\*BHS Attendance Area School (Red)

\*GHS Attendance Area School (Blue)



# Bozeman Public Schools

## Calendar

### 2025-2026

#### PIR Dates & Conferences - No School

August 27-29	K-12 PIR Day
September 29	K-12 PIR Day
October 16-17	K-12 PIR Day
November 6-7	K-5 P/T Conferences
November 14	9-12 PIR Day
January 19	K-12 PIR Day
January 26	9-12 PIR Day
April 9	6-8 PIR Day
April 10	6-12 PIR Day
May 22	K-12 PIR Day
June 12	K-12 PIR Day

#### Holidays & School Closures- No School

September 1	Labor Day
November 26-28	Thanksgiving
December 22-January 2	Winter Break
January 19	Martin Luther King Jr.
February 16	President's Day
March 16-20	Spring Break
May 25	Memorial Day

#### Important Dates

September 2	School Begins 1-12
September 4	Kindergarten begins
January 21-23	HS Final Exams
June 6	HS Graduation!
June 11	Last Day of School, students released at 12:45 p.m.

#### Grading Periods

K-5:	January 23 June 11
6-8:	Semester 1 - January 23 Quarter 1 - October 31 Quarter 2 - January 23 Quarter 3 - April 3 Semester 2 - June 11
9-12:	Period 1 - October 10 Period 2 - November 21 1st Semester - January 23  Period 1 - March 6 Period 2 - April 24 2nd Semester - June 11 HS Credit Recovery Required Days - June 15-June 25

#### JULY • 2025

S	M	T	W	T	F	S
		1	2	3	4	5
6	7	8	9	10	11	12
13	14	15	16	17	18	19
20	21	22	23	24	25	26
17	28	29	30	31		

#### JANUARY • 2026

S	M	T	W	T	F	S
				1	2	3
4	5	6	7	8	9	10
11	12	13	14	15	16	17
18	19	20	21	22	23	24
25	26	27	28	29	30	31

#### AUGUST • 2025

S	M	T	W	T	F	S
					1	2
3	4	5	6	7	8	9
10	11	12	13	14	15	16
17	18	19	20	21	22	23
24	25	26	27	28	29	30
31						

#### FEBRUARY • 2026

S	M	T	W	T	F	S
1	2	3	4	5	6	7
8	9	10	11	12	13	14
15	16	17	18	19	20	21
22	23	24	25	26	27	28

#### SEPTEMBER • 2025

S	M	T	W	T	F	S
	1	2	3	4	5	6
7	8	9	10	11	12	13
14	15	16	17	18	19	20
21	22	23	24	25	26	27
28	29	30				

#### MARCH • 2026

S	M	T	W	T	F	S
1	2	3	4	5	6	7
8	9	10	11	12	13	14
15	16	17	18	19	20	21
22	23	24	25	26	27	28
29	30	31				

#### OCTOBER • 2025

S	M	T	W	T	F	S
			1	2	3	4
5	6	7	8	9	10	11
12	13	14	15	16	17	18
19	20	21	22	23	24	25
26	27	28	29	30	31	

#### APRIL • 2026

S	M	T	W	T	F	S
			1	2	3	4
5	6	7	8	9	10	11
12	13	14	15	16	17	18
19	20	21	22	23	24	25
26	27	28	29	30		

#### NOVEMBER • 2025

S	M	T	W	T	F	S
						1
2	3	4	5	6	7	8
9	10	11	12	13	14	15
16	17	18	19	20	21	22
23	24	25	26	27	28	29
30						

#### MAY • 2026

S	M	T	W	T	F	S
						1
2	3	4	5	6	7	8
9	10	11	12	13	14	15
16	17	18	19	20	21	22
23	24	25	26	27	28	29
30						

#### DECEMBER • 2025

S	M	T	W	T	F	S
	1	2	3	4	5	6
7	8	9	10	11	12	13
14	15	16	17	18	19	20
21	22	23	24	25	26	27
28	29	30	31			

#### JUNE • 2026

S	M	T	W	T	F	S
	1	2	3	4	5	6
7	8	9	10	11	12	13
14	15	16	17	18	19	20
21	22	23	24	25	26	27
28	29	30				

Revised: 11/30/2024

Please note that our individual schools might have additional important dates related to other school functions.  
Please check with your local school for these dates and events.