

Find Your Summit

ORTING SCHOOL DISTRICT CAREER AND TECHNICAL EDUCATION MAGAZINE

Career and Technical Education (CTE) is a clear path to your future... learn about CTE pathways that could help you land jobs, trade school, 2-year and 4-year college opportunities!



Contents



- 2 What is CTE?
- 3 Agricultural Sciences
- 5 Business Education
- 7 Family and Consumer Sciences
- 9 Health Sciences
- 11 Skilled and Technical Sciences
- 13 Science, Technology, Engineering, Mathematics (STEM)



Orting School District does not discriminate in any programs or activities on the basis of sex, race, creed, religion, color, national origin, age, veteran or military status, sexual orientation, gender expression or identity, disability, marital status, or the use of a trained dog guide or service animal and provides equal access to the Boy Scouts and other designated youth groups. The following employees have been designated to handle questions and complaints of alleged discrimination and their offices are located at 121 Whitesell St NE, Orting, WA 98360: Civil Rights Compliance/Title IX/ADA Coordinator Debi Christensen, Executive Director for Human Resources, 360-893-6500, ext. 4028, christensend@orting.wednet.edu. Section 504 Coordinator Dr. Jennifer Westover, Executive Director for Student Support Services, 360-893-6500, ext. 4027, westoverj@orting.wednet.edu. Information about the nondiscrimination and sex-based discrimination policies and grievance procedures, and how to report a concern or complaint can be accessed [here](#). Title IX inquiries may also be directed toward the U.S. Department of Education, Office for Civil Rights.

What is CTE?

Career and Technical Education, also known as CTE, provides students with the academics, technical skills, knowledge, and training necessary to succeed in future careers and to become life-long learners, with an emphasis on real-world, real-life skills.



Helping All Students Become Career and College Ready

Washington promotes and supports locally based middle and high school programs that provide 21st century, academic and technical skills for all students. Whether you plan to go to work straight out of high school or eventually earn your PhD, you can benefit from CTE.

Through CTE, students:

- Explore careers in middle and high school, especially in high-demand, high-growth fields such as healthcare and environmental sciences.
- Identify a career goal.
- Apply math, science, and other academic subjects in real-life, hands-on ways through taking classes in middle and high schools, at skills centers, and community and technical colleges.
- Earn tuition-free college credits as well as high school credits required for graduation.
- Become leaders by participating in skills competitions and community service.



AGRICULTURAL SCIENCES

Agricultural sciences courses provide students with practical skills related to farming and agricultural production. This can include things like planting, harvesting, soil management, veterinarian science, and animal husbandry.

Studying agricultural sciences opens up a range of career opportunities in the industry, such as farm management, agricultural research, food safety inspection, agricultural marketing, and much more. Agricultural sciences courses can also help students develop the skills they need to start and manage their own agricultural business.



Where can agricultural sciences take you?

CTE classes in these clusters will introduce you to a variety of interesting careers, including:

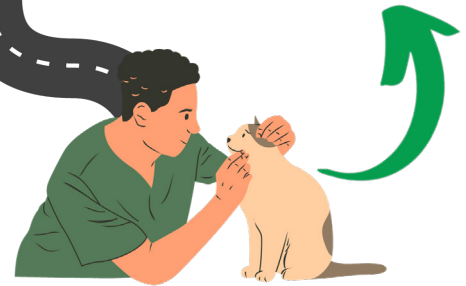
Take agricultural science CTE classes in high school...

Natural resource managers work to maintain and protect wildlife and natural land for a variety of organizations and employers.

Veterinary technicians perform medical tests that help diagnose animals' injuries and illnesses.



Natural Science Manager



Veterinary Technician

CTE classes in these clusters will introduce you to a variety of interesting careers, including:

Plant Pathologist, Agriculture Mechanic, Rancher, Farmers, Veterinarian, Nature Resource Manager, Forest Geneticist

COURSES OFFERED AT ORTING HIGH SCHOOL

AGRICULTURAL SCIENCES PATHWAY

ORTING HIGH SCHOOL ELECTIVES

- Introduction to Agriculture
- Natural Resources Biology
- Introduction to Animal Science
- Greenhouse Science
- Greenhouse Management
- Environmental Science Resource Management (Wildlife/Forestry)

Options at Pierce County Skills Center

- Pre-Veterinary Technology



ARTICULATION/ DUAL CREDIT

Dual Credit Options

University of Washington - 10 credits

Clover Park Technical College - 19 credits

Articulation agreements and number of credits are subject to change and course enrollment

LOCAL PUBLIC POST- SECONDARY OPTIONS

- Bellingham Technical College
- Clover Park Technical College
- Green River College
- Eastern Washington University
- Western Washington University
- Central Washington University
- Washington State University
- University of Washington



BUSINESS EDUCATION

Taking Business Education as a CTE course can be highly beneficial to students for a number of reasons. Business Education can provide students with practical skills related to business management, such as marketing, accounting, finance, and entrepreneurship. Studying business opens up a range of career opportunities including finance, marketing, sales, management, human resources, and entrepreneurship.

Business courses can also help students understand important financial concepts. These skills are essential for personal financial success and can help students make informed decisions throughout their lives.



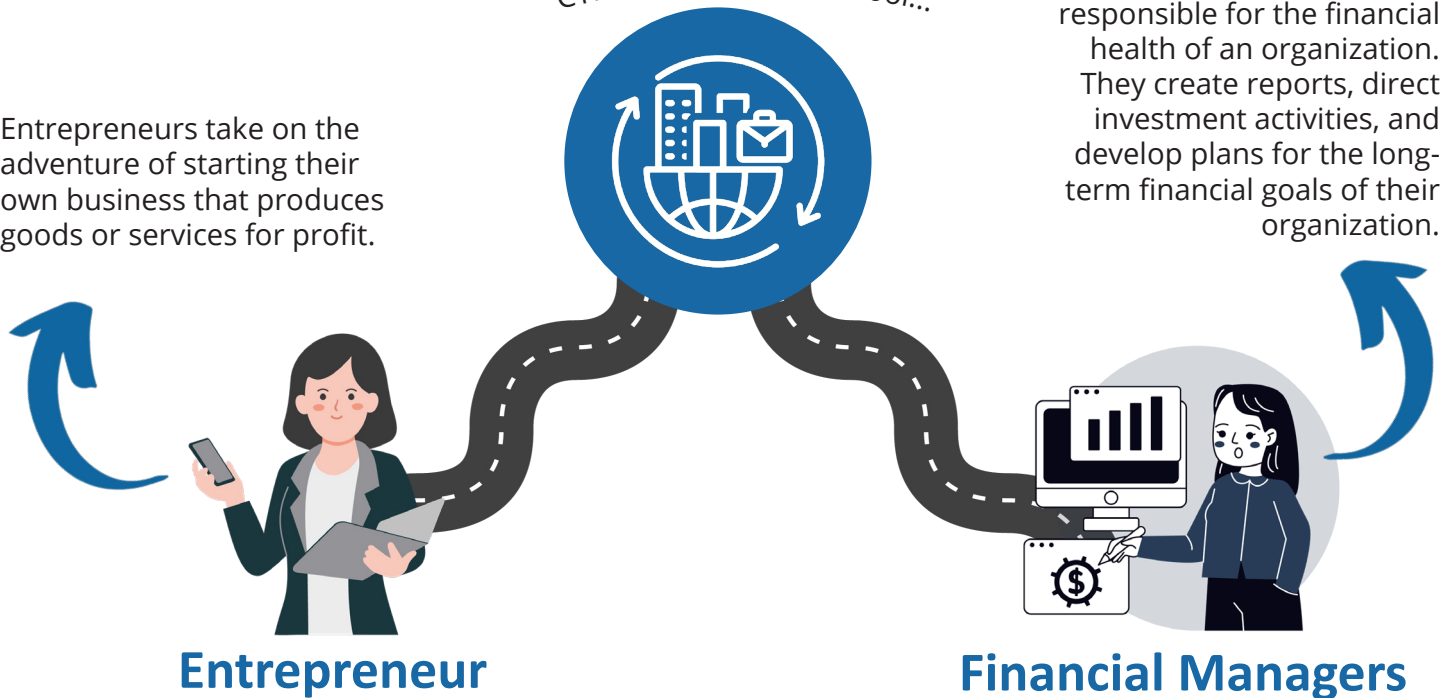
Where can business education take you?

CTE classes in these clusters will introduce you to a variety of interesting careers, including:

Take business education
CTE classes in high school...

Entrepreneurs take on the adventure of starting their own business that produces goods or services for profit.

Financial managers are responsible for the financial health of an organization. They create reports, direct investment activities, and develop plans for the long-term financial goals of their organization.



CTE classes in these clusters will introduce you to a variety of interesting careers, including:

Entrepreneur, Controller, Marketing Manager, Executive Assistant, Human Resource Manager, Receptionist

COURSES OFFERED AT ORTING HIGH SCHOOL

BUSINESS EDUCATION PATHWAY

ORTING HIGH SCHOOL ELECTIVES

- Introduction to Business and Marketing
- Project Management (Leadership)
- Entrepreneurship 1
- Entrepreneurship 2
- Business Operations: The Nest and Birdie Bistro
- Business Management
- Consumer Math III
- Economics
- Business Communication
- Digital Media Marketing
- AP Computer Science Principals
- Introduction to Computer Programming (CiHS Course)



ARTICULATION/ DUAL CREDIT

Dual Credit Options

Clover Park Technical College - 22 credits

Pierce College - 30 credits

Bates Technical College - 5 credits

University of Washington - 10 credits

Articulation agreements and number of credits are subject to change and course enrollment

LOCAL PUBLIC POST- SECONDARY OPTIONS

- Highline College
- Bates Technical College
- Renton Technical College
- Pierce College
- Eastern Washington University
- Western Washington University
- Washington State University
- University of Washington



FAMILY & CONSUMER SCIENCES

Family and Consumer Sciences pathway is a great fit for students who are interested in cooking, understanding management, and promoting guest services in restaurants. These courses can provide students with life skills, career opportunities, health and wellness, and college and career readiness. Students can pursue various careers such as in the culinary arts and hospitality management.

In addition to OSD, American Sign Language (ASL) also fits into this pathway so students that learn ASL could go on and become an ASL interpreter.



Where can family and consumer sciences take you?

CTE classes in these clusters will introduce you to a variety of interesting careers, including:

Take family and consumer CTE classes in high school...

Educators teach students in a school or learning environment. They are responsible for managing their classroom and planning and presenting lessons to their students.

Executive chefs are the leaders of a professional kitchen. Also known as head chef, they are in charge of all back-of-the-house activities, from menu planning to mentoring the kitchen staff.



Educator

Executive Chef

CTE classes in these clusters will introduce you to a variety of interesting careers, including:

Teacher Principal, ASL Interpreter, Restaurant Manager, Chef

COURSES OFFERED AT ORTING HIGH SCHOOL

FAMILY AND CONSUMER SCIENCES PATHWAY

ORTING HIGH SCHOOL ELECTIVES

- American Sign Language 1
- American Sign Language 2
- American Sign Language 3
- American Sign Language 4
- Culinary 1
- Culinary 2
- Culinary 3
- Careers in Education

Options at Pierce County Skills Center

- Culinary Arts
- Cosmetology



ARTICULATION/ DUAL CREDIT

Dual Credit Options

Clover Park Technical College - 13 credits

Bates Technical College - 13 credits

Pierce College - 5 credits

Eastern Washington University - 5 credits

Articulation agreements and number of credits are subject to change and course enrollment

LOCAL PUBLIC POST- SECONDARY OPTIONS

- Highline College
- Bates Technical College
- Renton Technical College
- Spokane Falls Community College
- Pierce College
- Eastern Washington University
- Western Washington University
- Washington State University
- University of Washington



HEALTH SCIENCES

Health Sciences courses can lead students into the most in-demand jobs across the nation. Students who are interested in science, helping others, and discovering new things will enjoy this pathway. Students in the health sciences pathway learn and practice skills that prepare them for diverse post-high school education and training opportunities from apprenticeships and two-year college programs to four-year college and graduate programs.

In the health sciences pathway, you can prepare for a career that promotes health, wellness, and diagnosis and treats injuries and diseases.



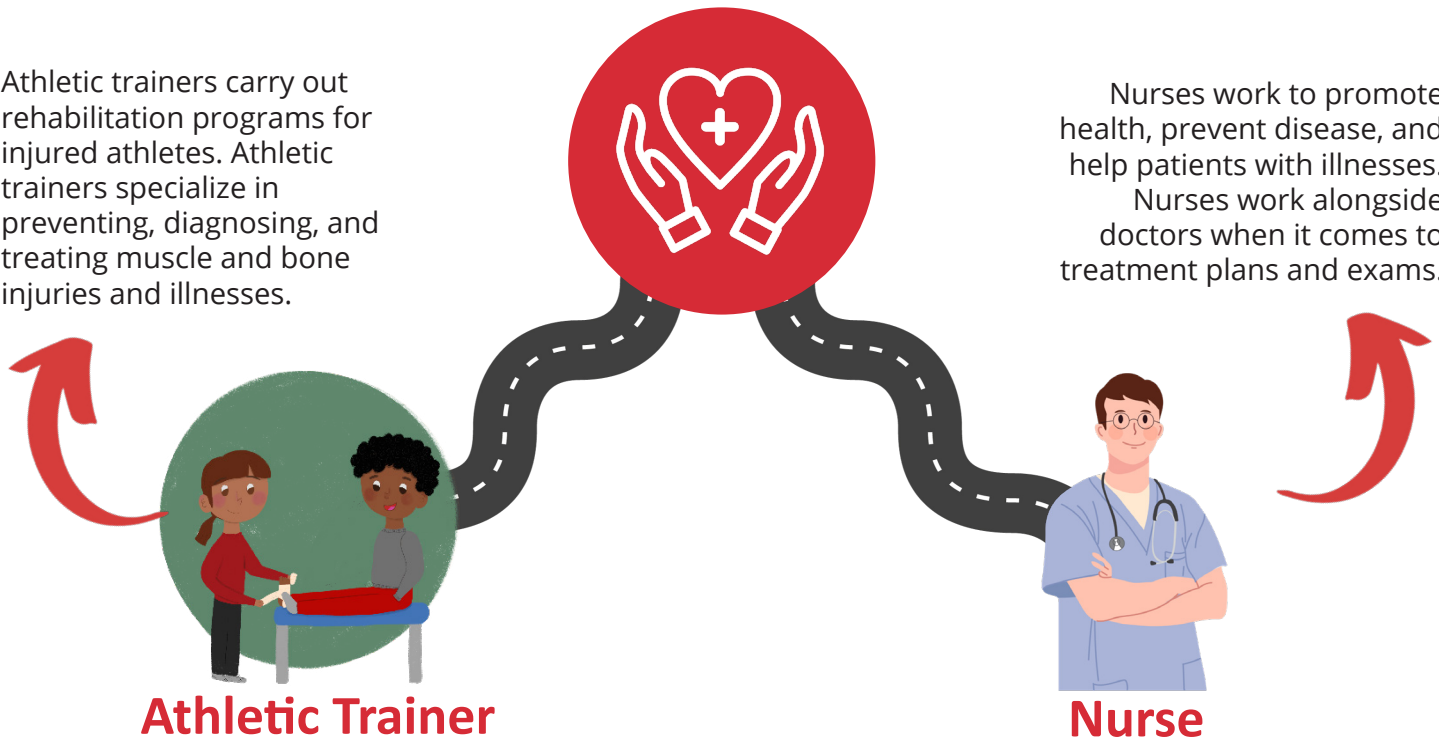
Where can health sciences take you?

CTE classes in these clusters will introduce you to a variety of interesting careers, including:

Take health CTE classes in high school...

Athletic trainers carry out rehabilitation programs for injured athletes. Athletic trainers specialize in preventing, diagnosing, and treating muscle and bone injuries and illnesses.

Nurses work to promote health, prevent disease, and help patients with illnesses. Nurses work alongside doctors when it comes to treatment plans and exams.



CTE classes in these clusters will introduce you to a variety of interesting careers, including:

Athletic Trainer, Nurse, Hospital Administrator, Medical Lab Technician, Nutritionist

COURSES OFFERED AT ORTING HIGH SCHOOL

HEALTH SCIENCES PATHWAY

ORTING HIGH SCHOOL ELECTIVES

- Introduction to Medical Careers
- Anatomy and Physiology
- Anytime Fitness
- Sports Medicine 1
- Sport Medicine 2
- Biotechnology

Options at Pierce County Skills Center

- Pre-Physical Therapy and Sports Medicine
- Pre-Pharmacy Technology
- Medical Careers
- Criminal Justice
- Fire Science and Emergency Services



ARTICULATION/ DUAL CREDIT

Dual Credit Options

Clover Park Technical College - 5 credits

Pierce County - 13 credits

Bates Technical College - 4 credits

Articulation agreements and number of credits are subject to change and course enrollment

LOCAL PUBLIC POST- SECONDARY OPTIONS

- | | |
|---------------------------------|-----------------------------------|
| • Bates Technical College | • Community College |
| • Clover Park Technical College | • St. Martin's University |
| • Gonzaga University | • Tacoma Community College |
| • Green River Community College | • Washington State University |
| • Olympic College | • Western Washington University |
| • Pierce College | • University of Washington |
| • Pacific Lutheran University | • University of Washington-Tacoma |
| • Renton Technical College | |
| • Seattle Pacific University | |
| • South Puget Sound | |



SKILLED AND TECHNICAL SCIENCES

In this pathway, students will apply artistic talent to practical problems and learn visual art principles that will align them with the necessary skills and techniques to work in a variety of creative design and entertainment fields. Creative students who see themselves designing, producing, exhibiting, performing, writing, or publishing multimedia content will want to pursue courses in this pathway.



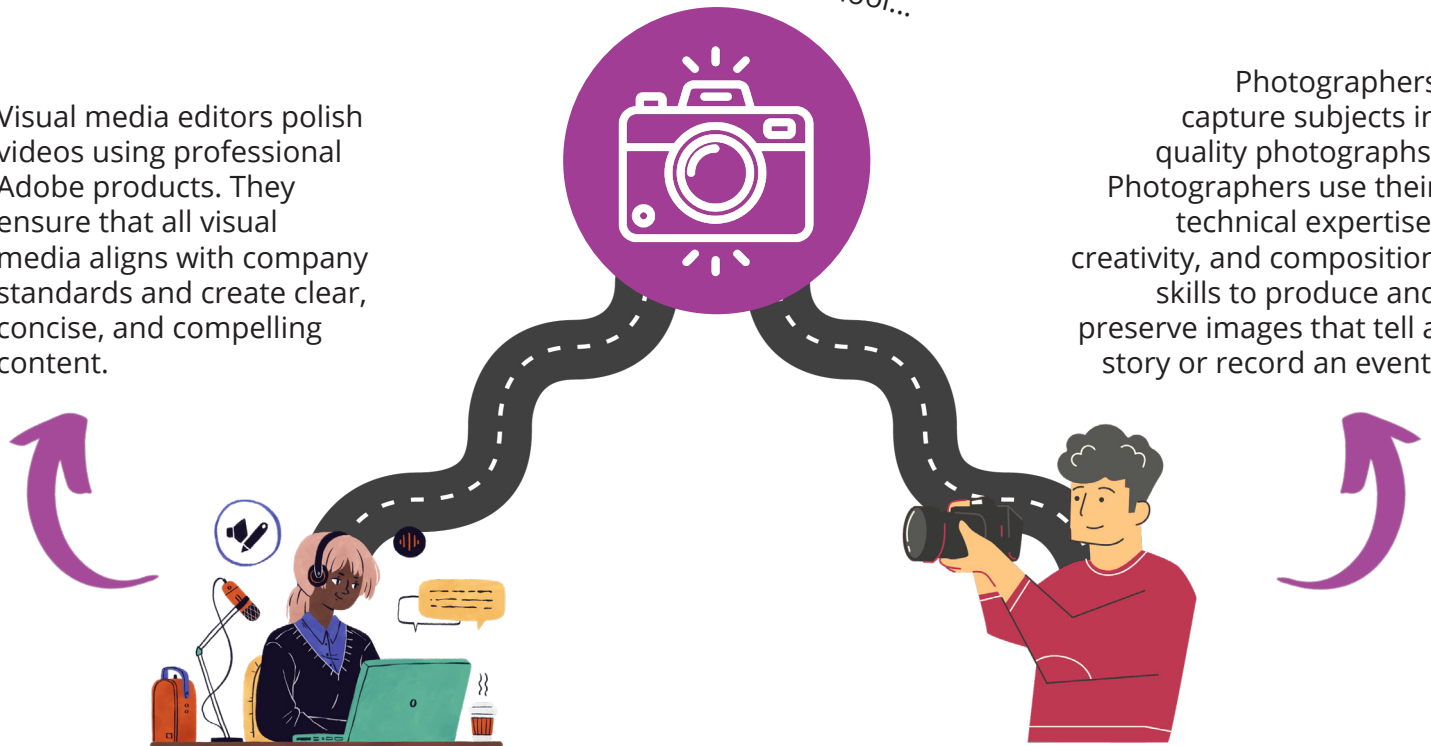
Where can skilled and technical sciences take you?

CTE classes in these clusters will introduce you to a variety of interesting careers, including:

Take arts and communication
CTE classes in high school...

Visual media editors polish videos using professional Adobe products. They ensure that all visual media aligns with company standards and create clear, concise, and compelling content.

Photographers capture subjects in quality photographs. Photographers use their technical expertise, creativity, and composition skills to produce and preserve images that tell a story or record an event.



Visual Media Editor

Photographer

CTE classes in these clusters will introduce you to a variety of interesting careers, including:

Video or Web Producer, Graphic Designer, Visual Media Editor, Photographer, Film Maker, Publisher, Communications Manager

COURSES OFFERED AT ORTING HIGH SCHOOL

ARTS AND COMMUNICATIONS PATHWAY

ORTING HIGH SCHOOL ELECTIVES

- Digital Photography I
- Digital Photography II
- Digital Photography III
- Graphic Design I
- Graphic Design 2
- Video Production
- Electronic Music Production I
- Electronic Music Production II
- Commercial 2D Art
- Commercial 3D Art
- Graphic Design 3
- Annual



ARTICULATION/ DUAL CREDIT

Dual Credit Options

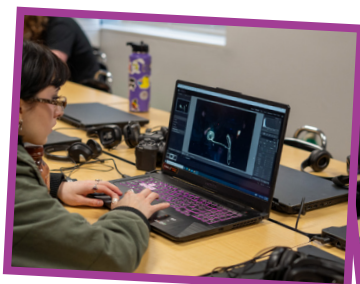
Clover Park Technical College - 21 credits

Pierce College - 15 credits

Articulation agreements and number of credits are subject to change and course enrollment

LOCAL PUBLIC POST- SECONDARY OPTIONS

- South Seattle College
- Clover Park Technical College
- Highline College
- Olympic College
- Western Washington University
- Seattle Pacific University
- Renton Technical College
- Seattle Central College
- University of Washington-Tacoma



STEM

STEM (Science, Technology, Engineering, and Mathematics) fields are in high demand and offer many well-paying and stable jobs. By taking STEM courses, students can gain skills and knowledge that can prepare them for a variety of STEM-related careers.

STEM courses encourage creativity and innovation. Students are often allowed to design and build their own projects, which can help develop their problem-solving skills and creativity.



Where can STEM take you?

CTE classes in these clusters will introduce you to a variety of interesting careers, including:

Take STEM CTE classes
in high school...

A machinist is a trained tradesperson with the skills and knowledge to create tools, parts, and objects by operating milling and drilling machines, grinders, and lathes in a machine shop.



Machinist

Engineers apply scientific principles to analyze, design, invent, code, build, and create to solve all sorts of problems. They use math and science to make all kinds of discoveries.



Engineer

CTE classes in these clusters will introduce you to a variety of interesting careers, including:

Engineer, Aerospace Inspector, Biochemist, Mathematician, Architect, Quality Technician, Hydrologist

COURSES OFFERED AT ORTING HIGH SCHOOL

STEM PATHWAY

ORTING HIGH SCHOOL ELECTIVES

- STEM I
- STEM II
- STEM III
- Physics

Options at Pierce County Skills Center

- IT/Cybersecurity
- Video Game Development
- Aerospace Composites
- Aerospace Machining
- Construction Trades
- Automotive Technology



ARTICULATION/ DUAL CREDIT

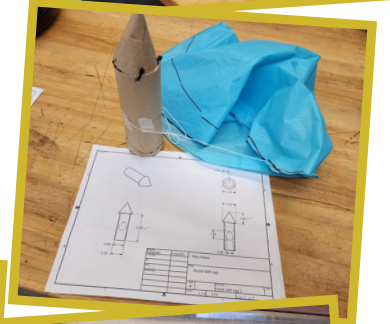
Dual Credit Options

Clover Park Technical College - 4 credits

Articulation agreements and number of credits are subject to change and course enrollment

- Lake Washington Technical College
- South Seattle College
- Renton Technical College
- Columbia Basin College
- Eastern Washington University
- Western Washington University
- Central Washington University
- Washington State University
- University of Washington

LOCAL PUBLIC POST- SECONDARY OPTIONS





PIERCE COUNTY CTE DATA

8% of jobs are in construction trades

19% of jobs are in the health care industry

9% of jobs are in educational services

8% of jobs are a combination of food services

25% of jobs are related to business and marketing

5% of jobs are in manufacturing



Contact us or scan
the QR code to
learn more!



Orting High School

(360) 893-2246

Student Enrollment

(360) 893-6500

Orting Middle School

(360) 893-3565

Human Resources

(360) 893-6500