

$$\frac{2}{3} Q''$$

$$\int (x \pm a^2)$$

$$e = 2,79$$

UNICEF PRESENTS

PEER MATH TUTORING

Gain volunteering hours!
May be eligible for extra credit in your math class!

EVERY MORNING
MONDAY-FRIDAY
(EXCEPT TUESDAY)
7:30AM-8:30AM
ROOM 231

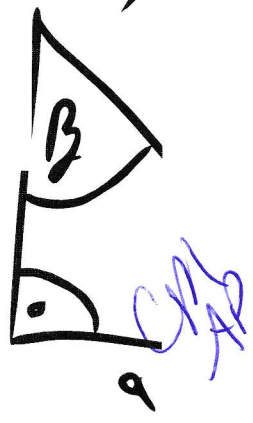
Scan the QR code if interested



$$ax +$$

$$\frac{1}{2} = \frac{1}{2}$$

$$2a)$$

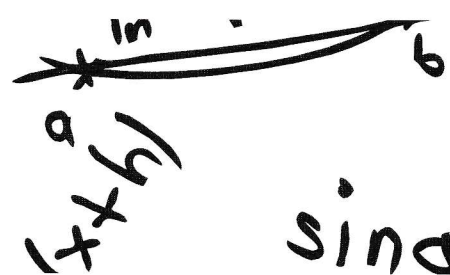


$$\frac{3a}{x}$$

$$2x^2 +$$

$$\frac{1}{\sqrt{1}}$$

$$\frac{\Delta x}{\Delta x}$$



$$\sin a = \frac{a}{c}$$

$$S_3 = \begin{pmatrix} 1 & 0 & 0 \\ 0 & 1 & 0 \\ 0 & 0 & 1 \end{pmatrix}$$