



District 65 Demography Study Update

Committee of the Whole
February 10, 2025



EVANSTON/SKOKIE
SCHOOL DISTRICT 65

Every Child, Every Day, Whatever it Takes



Background

Understanding the McKibben Demography Report



Demography Report Purpose: to ascertain the demographic factors that will ultimately influence the enrollment levels in the district's schools to determine what impact demographic changes will have on future enrollment.

- ★ **“This study is a forecast, not a projection; and the amount of modification of the demographic trends varies between different areas of the district as well as within the timeframe of the forecast.”**

Structure:

- Introduction
- Data
- Assumptions
- Methodology
- References
- Data Tables

Data Used: (Page 3 & 5)

Assumptions: (p. 3-4)

- Fertility and mortality rates held constant
- Age specific net migration held constant
- Household size expected to have a slight decrease over the next 10 years.
- Current current economic, political, social, and environmental factors remains constant.

Overview



Reports:

- D65 completed a 2021 demography study using current attendance boundaries.
- D65 completed a second study in 2024 to assess post pandemic numbers and new attendance boundaries.

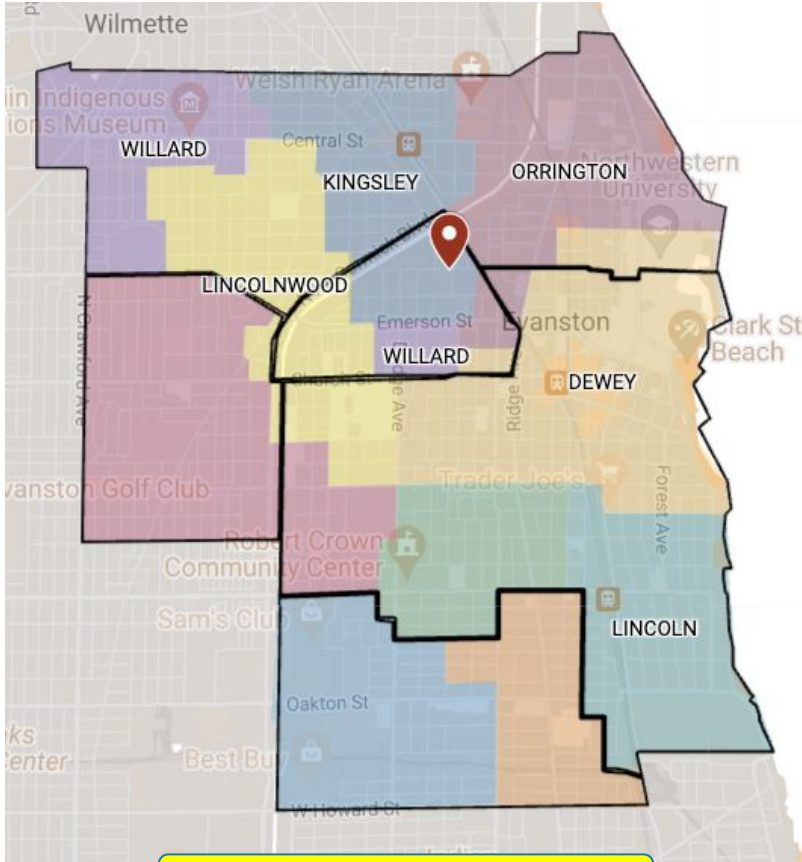
Alignment to SDRP

- Phase 3 includes consideration of school closings or consolidations.

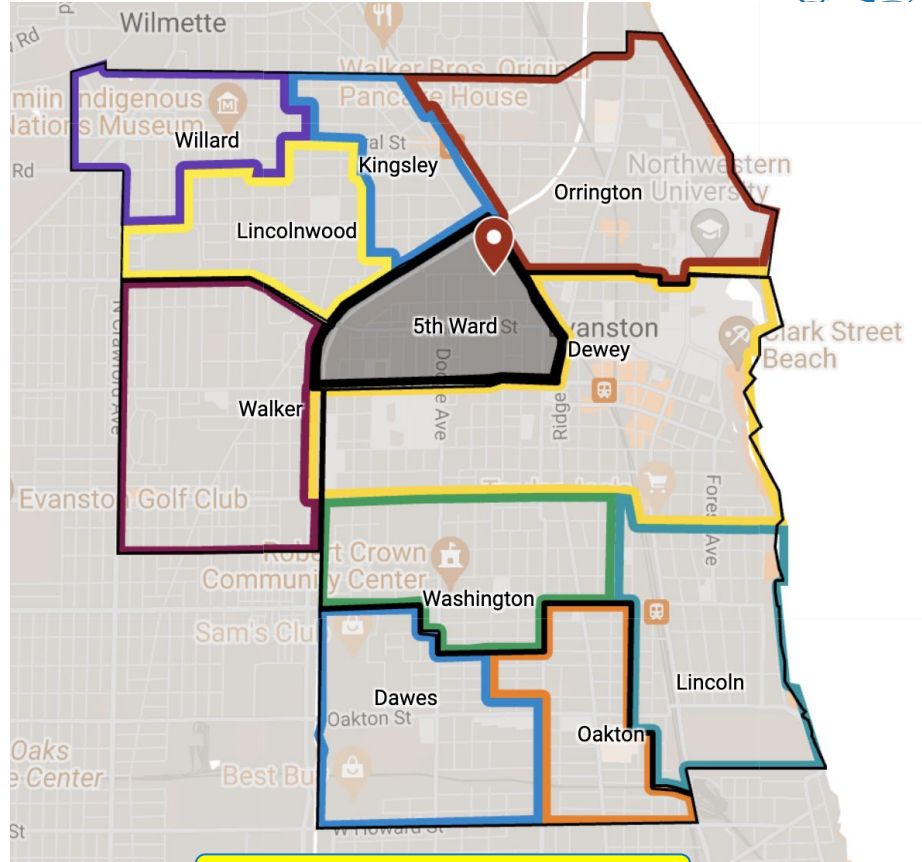
Financial Consideration

- D65 has estimated **annual operational costs** of a K-5 school are approximately \$1.5-2 M.
- This does not include any decisions related to property if a school is closed/consolidated.

District 65 Attendance Boundaries



Current K-5 Boundaries



2026-27 K-5 Boundaries

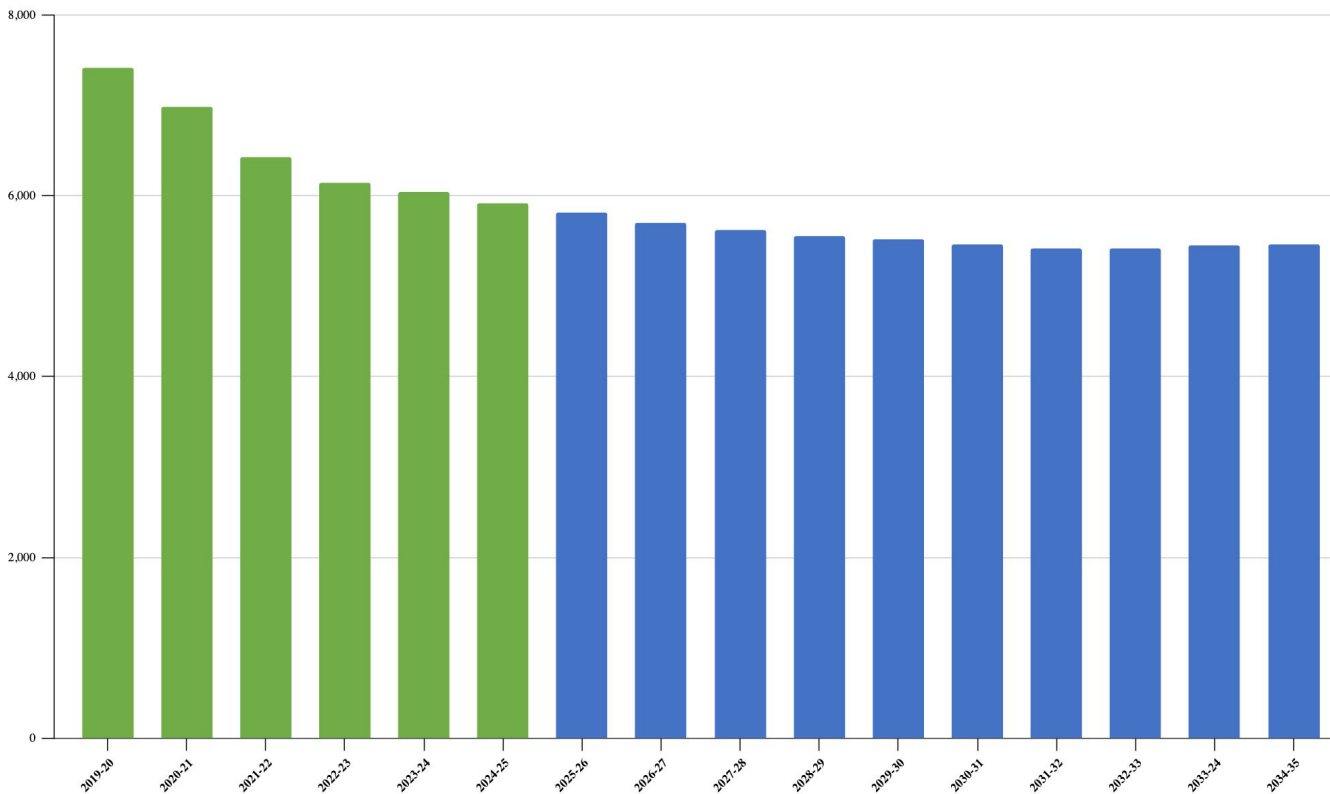


District 65 Demography Study

Appendix D: Enrollment Forecasts



Evanston-Skokie School District 65: K-8th Total Enrollment



Executive Summary Excerpts:

- The Evanston/Skokie School District 65 will *experience steady population and modest enrollment decline over the next 10 years*, primarily *due to a growing elderly population, an increase in empty nest housing stock and relatively low number of housing units turning over*.
- Total district enrollment is forecasted to **decrease by 401 students, or -7.3%**, from Academic Year (AY) 2024-25 through AY 2029-30. Total enrollment is expected to further decrease by 55 students, or -1.0%, from AY 2029-30 through AY 2034-35.
- The total elementary enrollment will slowly decrease over the next seven school years, then stabilize.



Table 5: Elementary Enrollment (K-5), 2024, 2029, 2034

	2024	2029	2024-2029 Change	2034	2029-2034 Change	2024-2034 Change
5th Ward	477	430	-9.9%	443	3.0%	-7.1%
Dawes	319	300	-6.0%	314	4.7%	-1.6%
Dewey	417	384	-7.9%	377	-1.8%	-9.6%
Kingsley	189	197	4.2%	203	3.0%	7.4%
Lincoln	452	412	-8.8%	414	0.5%	-8.4%
Lincolnwood	181	181	0.0%	194	7.2%	7.2%
Oakton	454	421	-7.3%	419	-0.5%	-7.7%
Orrington	259	264	1.9%	254	-3.8%	-1.9%
Walker	397	358	-9.8%	363	1.4%	-8.6%
Washington	424	385	-9.2%	383	-0.5%	-9.7%
Willard	247	226	-8.5%	242	7.1%	-2.0%
District Total	3,816	3,558	-6.8%	3,609	1.4%	-5.4%

Executive Summary Excerpts:

- The **primary factors** causing the Evanston-Skokie School District 65 enrollment to decrease over the next 10 years is the **increase in empty nest households** in the district, the **relatively low number of elderly housing units turning over coupled with a modest rate of in-migration of young families**.



District 65 Demography Study

Population & Enrollment Tables



Table 1: Forecasted District Total Population Change, 2020 to 2030

	2020	2025	2020-2025 Change	2030	2025-2030 Change	2020-2030 Change
5th Ward	5,590	5,830	4.3%	6,080	4.3%	8.8%
Dawes	5,462	5,460	0.0%	5,380	-1.5%	-1.5%
Dewey	19,659	19,520	-0.7%	19,360	-0.8%	-1.5%
Kingsley	3,604	3,480	-3.4%	3,340	-4.0%	-7.3%
Lincoln	11,342	11,440	0.9%	11,360	-0.7%	0.2%
Lincolnwood	3,930	3,730	-5.1%	3,550	-4.8%	-9.7%
Oakton	8,579	8,890	3.6%	9,140	2.8%	6.5%
Orrington	8,767	8,850	0.9%	8,820	-0.3%	0.6%
Walker	8,103	8,200	1.2%	8,230	0.4%	1.6%
Washington	7,124	7,280	2.2%	7,360	1.1%	3.3%
Willard	4,053	4,090	0.9%	4,060	-0.7%	0.2%
District Total	86,213	86,770	0.6%	86,680	-0.1%	0.5%

Executive Summary Excerpts:

- The **median age** of the population in the Evanston-Skokie School District 65 district will **increase from 37.2 years in 2020 to 41.0 in 2035** confirming the continuation of the district’s aging trend.
- *The resident total fertility rate (TFR) for the Evanston-Skokie School District 65 over the life of the forecasts is below replacement level (1.33 vs. the replacement level of 2.1). If the college students in the district are excluded, the district’s TFR would be 1.64.*



Table 3: Householder Characteristics by Elementary Area, 2020 Census

	Percentage of Householders aged 35-54	Percentage of Householders aged 65+	Percentage of Householders Who Own Homes
5th Ward	40.5%	23.6%	48.7%
Dawes	38.7%	29.0%	72.6%
Dewey	23.0%	27.1%	40.5%
Kingsley	33.9%	34.6%	75.5%
Lincoln	35.6%	21.9%	44.2%
Lincolnwood	41.3%	32.4%	83.6%
Oakton	38.3%	21.1%	44.8%
Orrington	28.0%	23.9%	52.2%
Walker	36.7%	35.6%	88.8%
Washington	42.9%	24.6%	64.6%
Willard	42.0%	30.9%	90.2%
District Total	33.7%	26.4%	56.0%

Executive Summary Excerpts:

- Even if the district continues to have some amount of annual new housing unit construction over the next 10 years, the rate, ***magnitude and price of existing home sales will become the increasingly dominant factor*** affecting the amount of population and enrollment change.



District 65 Demography Study

School Age Population v. School Age Enrollment



Table 7: Comparison of District Resident Enrollment by Grade with 2020 Census Counts by Age, 2020-2024

2020 Census	Under 1 year	1 year	2 years	3 years	4 years	5 years	6 years	7 years	8 years	9 years	10 years	11 years	12 years	13 years
Evanston-Skokie District 65	710	703	746	806	859	886	875	887	873	987	986	969	1,011	1,056
2024 Grade		K	1	2	3	4	5	6	7	8				
2024 Enrollment		526	614	662	683	642	689	703	724	679				
% of Census Counts by Age		74.8%	82.3%	82.1%	79.5%	72.5%	78.7%	79.3%	82.9%	68.8%				
2023 Grade			K	1	2	3	4	5	6	7	8			
2023 Enrollment			590	639	670	635	685	698	716	673	738			
% of Census Counts by Age			79.1%	79.3%	78.0%	71.7%	78.3%	78.7%	82.0%	68.2%	74.8%			
2022 Grade				K	1	2	3	4	5	6	7	8		
2022 Enrollment				593	663	628	684	700	723	676	750	728		
% of Census Counts by Age				73.6%	77.2%	70.9%	78.2%	78.9%	82.8%	68.5%	76.1%	75.1%		
2021 Grade					K	1	2	3	4	5	6	7	8	
2021 Enrollment					626	625	690	694	733	736	771	768	787	
% of Census Counts by Age					72.9%	70.5%	78.9%	78.2%	84.0%	74.6%	78.2%	79.3%	77.8%	
2020 Grade						K	1	2	3	4	5	6	7	8
2020 Enrollment						630	752	725	779	766	823	785	826	899
% of Census Counts by Age						71.1%	85.9%	81.7%	89.2%	77.6%	83.5%	81.0%	81.7%	85.1%

Table 7: Comparison of District Resident Enrollment by Grade with 2020 Census Counts by Age, 2020-2024. For 2020, the percentage of students attending District 65 schools ranged from 71.1% to 89.2%, with a median of **81.7%**. In 2024, the enrollment percentages ranged from 68.8% to 82.9%, with a median of **79.3%**.

Headlines - Superintendent's Parent Advisory



Background: The Superintendent's Parent Advisory Group had an opportunity to engage in a facilitated exploration of the 2024 Demography study. After exploring the enrollment and population data, the teams generated the following headlines to capture key ideas that emerged from the data.

HEADLINES:

- District 65 closing the gap to pre pandemic enrollment (percentage)
- Focus on managing current enrollment by providing best possible educational experiences
- Enrollment is not recovering to Pre 2020 levels (number of students)

WONDERINGS:

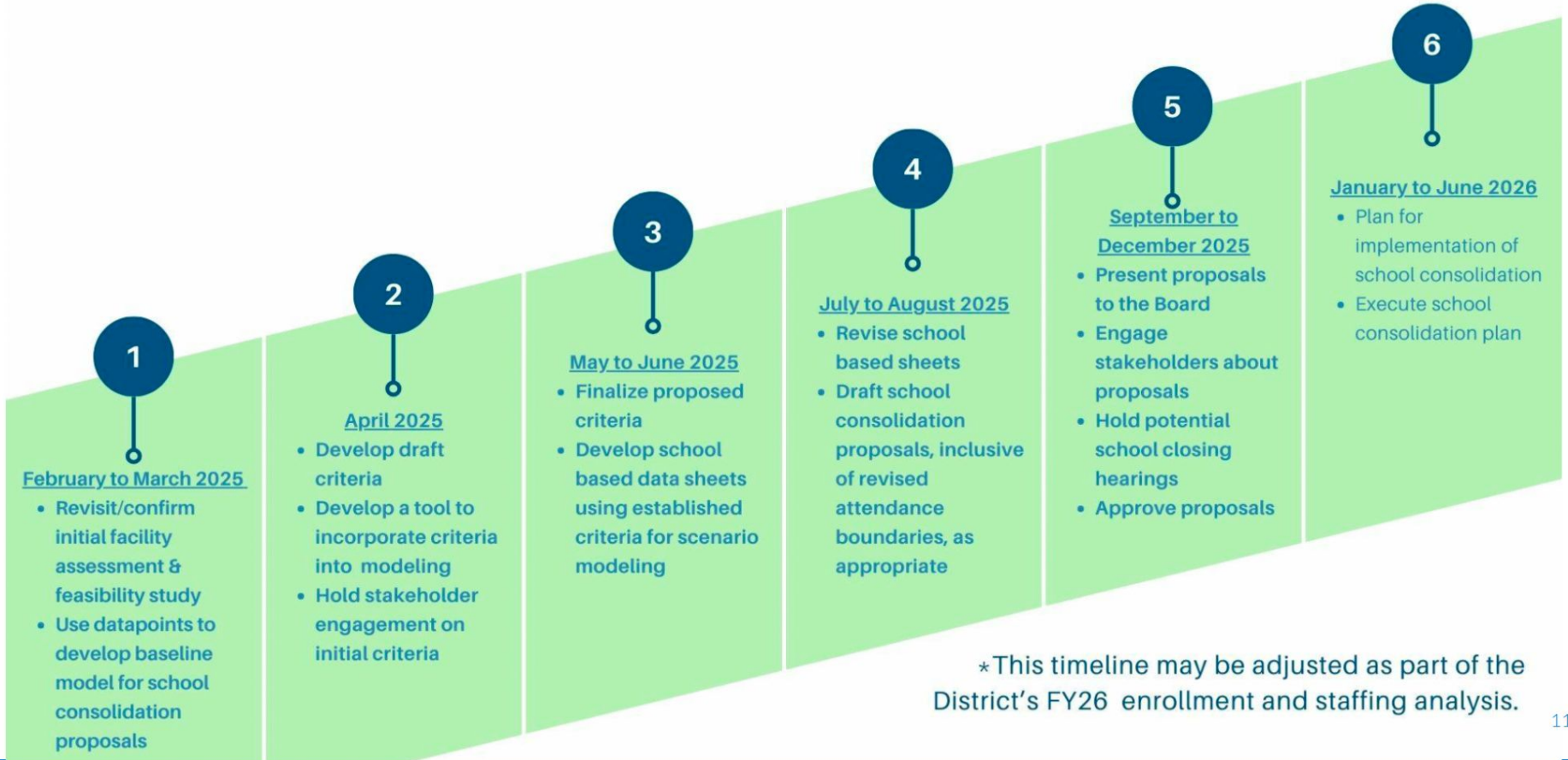
- How far under capacity are we? What is capacity? How does this influence the number of schools?
- What other priorities need to be considered when making big decisions like closing or consolidations?
- How do you factor in King Arts/Magnets while using demography data/considering options for closing or consolidations?
- How does rezoning in Evanston potentially affect the forecast?
- How do you factor in the political influence on immigrant student population when forecasting?

District Comparisons - General Information



District Name	School Count	Building Types and Number	K-8
Glenview CCSD 34	8	3 PK-2, 3 3-5, 2 6-8	4157
CCSD 62	11	1 PK, 7 K-5, 1 K-8, 2 6-8	4171
Park Ridge CCSD 64	8	1 PK, 5 K-5, 2 6-8	4495
Downers Grove GSD 58	13	11 PK-6, 2 7-8	4674
New Lenox SD 122	12	1 K, 4 1-3, 3 4-6, 2 7-8, 1 K-8	4853
Orland SD 135	10	4 PK-2, 3 3-5, 3 6-8	5040
Arlington Heights SD 25	9	7 PK/K-5, 2 MS	5141
Oak Park ESD 97	10	8 PK/K-5, 2 MS	5437
Comm Cons SD 59	15	1 PK, 11 K-5, 3 MS	5528
Wheeling CCSD 21	12	9 K-5, 3 6-8	5781
Evanston CCSD 65	16*	1 PK, 10 K-5, 2 K-8, 3 6-8	6053
Crystal Lake CCSD 47	12	9 K-5, 3 6-8	6804

SDRP Tentative Timeline for Phase 3: Sustainability*



*This timeline may be adjusted as part of the District's FY26 enrollment and staffing analysis.



Questions

Instructions



Make a COPY of this presentation.

Please do not change the fonts in this presentation or the custom font colors.

Title font for general content slides should remain Raleway, color #014f7e, size 24pt.

Body text should be Lato, color dark gray 3. Font size may vary depending on content but should not be smaller than 14pt.



Two-column text here

Two-column text here





Text and Right Photo Slide



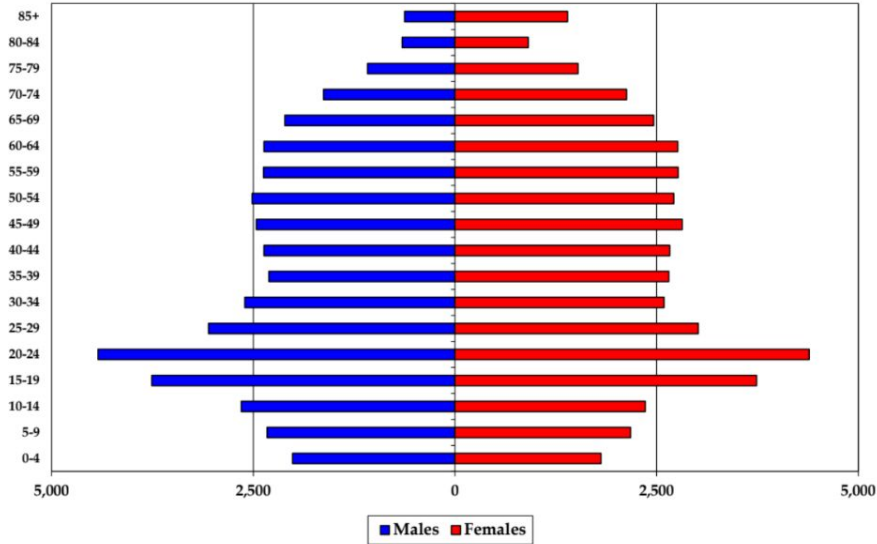
District 65 Demography Study

Population Pyramids (p. 11 - 18)

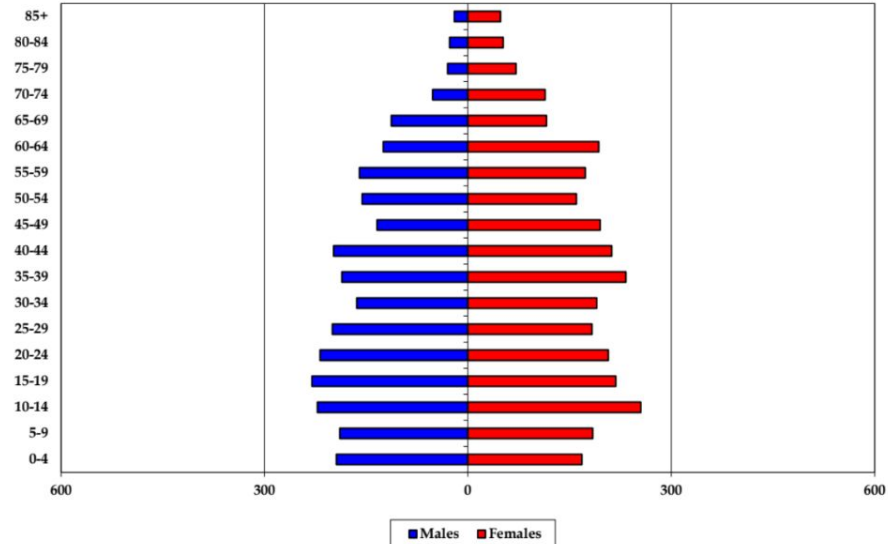
Data (p. 19 - 24)



Evanston-Skokie School District 65 Total Population - 2020 Census



5th Ward Elementary Total Population - 2020 Census

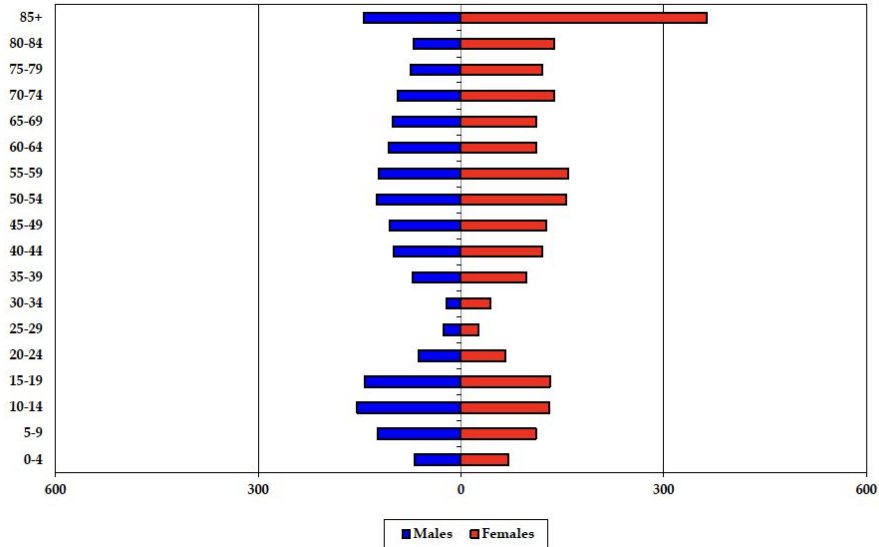


- The dominant non-college in-migration flow to the district continues to occur in the 0-to-9 and 25-to-44-year-old age groups. These tend to be young families with school age or preschool age children, which helps increase the size of the district's relatively small 0-4 age groups.

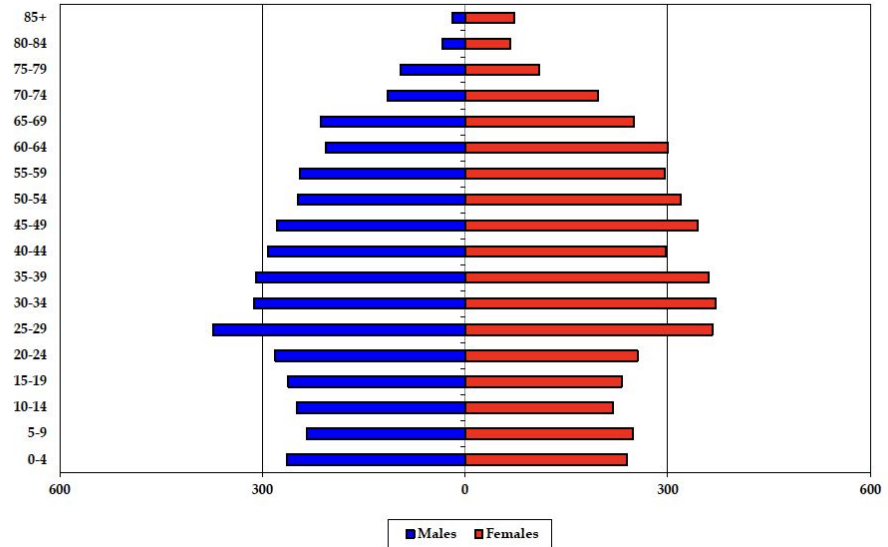
- .



Lincolnwood Elementary School Total Population - 2020 Census



Oakton Elementary School Total Population - 2020 Census



- The **resident** total fertility rate for the Evanston-Skokie School District 65 over the life of the forecasts is below replacement level (1.33 vs. the replacement level of 2.1). If the college students in the district are excluded, the district's TFR would be 1.64.
- The median age of the population in the Evanston-Skokie School District 65 district will increase from 37.2 years in 2020 to 41.0 in 2035 confirming the continuation of the district's aging trend.

Evanston-Skokie School District 65: Total Enrollment

	2019-20	2020-21	2021-22	2022-23	2023-24	2024-25	2025-26	2026-27	2027-28	2028-29	2029-30	2030-31	2031-32	2032-33	2033-24	2034-35
K	770	630	626	593	590	526	572	576	575	574	572	577	581	585	590	599
1	776	752	625	663	639	614	560	594	592	591	590	588	586	590	594	599
2	798	725	690	628	670	662	618	567	601	599	599	596	597	595	599	603
3	802	779	694	684	635	683	656	623	572	606	605	602	599	601	599	602
4	836	766	733	700	685	642	675	663	627	576	612	608	604	600	602	600
5	850	823	736	723	698	689	638	678	668	631	580	615	612	608	604	606
Total: K-5	4,832	4,475	4,104	3,991	3,917	3,816	3,719	3,701	3,635	3,577	3,558	3,586	3,579	3,579	3,588	3,609
6	831	785	771	676	716	703	672	633	678	657	625	587	621	620	616	612
7	920	826	768	750	673	724	707	675	639	684	663	637	590	624	623	619
8	836	899	787	728	738	679	715	697	667	631	675	658	631	593	627	626
Total: 6-8	2,587	2,510	2,326	2,154	2,127	2,106	2,094	2,005	1,984	1,972	1,963	1,882	1,842	1,837	1,866	1,857
Total: All Grades	7,419	6,985	6,430	6,145	6,044	5,922	5,813	5,706	5,619	5,549	5,521	5,468	5,421	5,416	5,454	5,466
Change		-434	-555	-285	-101	-122	-109	-107	-87	-70	-28	-53	-47	-5	38	12
Percent Change		-5.8%	-7.9%	-4.4%	-1.6%	-2.0%	-1.8%	-1.8%	-1.5%	-1.2%	-0.5%	-1.0%	-0.9%	-0.1%	0.7%	0.2%
Total: K-5	4,832	4,475	4,104	3,991	3,917	3,816	3,719	3,701	3,635	3,577	3,558	3,586	3,579	3,579	3,588	3,609
Change		-357	-371	-113	-74	-101	-97	-18	-66	-58	-19	28	-7	0	9	21
Percent Change		-7.4%	-8.3%	-2.8%	-1.9%	-2.6%	-2.5%	-0.5%	-1.8%	-1.6%	-0.5%	0.8%	-0.2%	0.0%	0.3%	0.6%
Total: 6-8	2,587	2,510	2,326	2,154	2,127	2,106	2,094	2,005	1,984	1,972	1,963	1,882	1,842	1,837	1,866	1,857
Change		-77	-184	-172	-27	-21	-12	-89	-21	-12	-9	-81	-40	-5	29	-9
Percent Change		-3.0%	-7.3%	-7.4%	-1.3%	-1.0%	-0.6%	-4.3%	-1.0%	-0.6%	-0.5%	-4.1%	-2.1%	-0.3%	1.6%	-0.5%

Forecasts developed November 2024

Green cells (2024-25 and earlier) are historical data

Blue cells (2025-26 and later) are forecasted years



Table 2: Household Characteristics by Elementary Area, 2020 Census

	HH w/ Pop Under 18	% HH w/ Pop Under 18	Total Households	Household Population	Persons Per Household
5th Ward	682	36.8%	1,855	5,552	2.99
Dawes	668	33.5%	1,995	5,257	2.64
Dewey	1,276	15.2%	8,368	16,072	1.92
Kingsley	400	25.0%	1,598	3,604	2.26
Lincoln	1,281	22.5%	5,695	11,276	1.98
Lincolnwood	528	40.6%	1,299	3,293	2.54
Oakton	1,034	27.0%	3,826	8,534	2.23
Orrington	671	24.1%	2,781	6,508	2.34
Walker	1,047	37.4%	2,798	8,083	2.89
Washington	874	35.0%	2,495	6,793	2.72
Willard	565	37.3%	1,513	4,028	2.66
District Total	9,026	26.4%	34,223	79,000	2.31

Executive Summary Excerpts:

- Even if the district continues to have some amount of annual new housing unit construction over the next 10 years, the rate, ***magnitude and price of existing home sales will become the increasingly dominant factor*** affecting the amount of population and enrollment change.





Footnote







District 65
Welcomes

NAME HERE

Position of Person
Placed Here



**NO IMAGE
AVAILABLE**

