



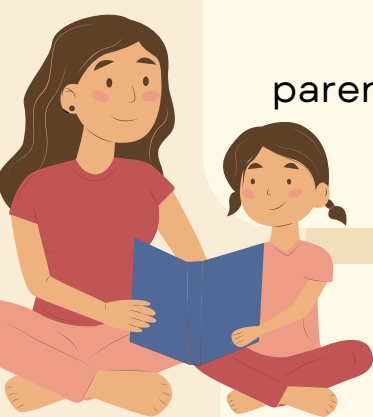
PARENT'S GUIDE TO Standards-Based Grading in Elementary



1

Our Goal

We strive to provide accurate, meaningful, and timely feedback to both students and parents throughout the learning process.



2

What is SBC?

Standards-based grading communicates how students perform on a set of clearly defined learning targets called standards.



3

Why use SBC?

- ✓ Other methods of grading do not accurately indicate what a student knows and is able to do.
- ✓ Grading should reflect the academic standards and be based solely on academic factors.
- ✓ For each standard, the teacher can provide a proficiency scale that describes exactly what the student needs to know, understand and be able to do.



4

How will SBC look different?

Beginning in the 2023-2024 school year, our elementary schools will move to a three-point scale for grading. Students will receive an **M**, **P** or **N** for each standard. **M = Meets Standard** (our goal for all students), **P = Partially Meets Standard**, and **N = Not Meeting Standard**. To receive an M, a student must be accurate and independent unless “with support” is part of the standard itself.



It is important to remember that ALL elementary priority standards are “end of year” standards. That is, the expectation is that students Meet the Standard (M) by the end of the school year. A standard may be assessed and reported multiple times throughout the year. Students who receive an N or P on a standard early on are still progressing as expected and will have additional opportunities to meet the standard by the end of the school year. The Infinite Campus grade book has the most up-to-date progress.

5

When will I see SBC grades?

- Parents may see grades coming home on assignments completed in class.
- Parents may see grades coming home on assessments taken in class.
- Parents may access grades in the **Parent Portal of Infinite Campus** at any time.
- Parents will receive quarterly grade cards each school year.



The JC Schools priority standards come from the Missouri Department of Elementary and Secondary Education (DESE)