



L. Dow Hendricks | Elementary School



Anna ISD | Administration Building



FEBRUARY 2025  
CONSTRUCTION UPDATE



# L. Dow Hendricks Elementary School

## Construction Update – February 2025



WRA





# L. Dow Hendricks Elementary School

Construction Update – February 2025





# L. Dow Hendricks Elementary School

## Construction Update - February 2025





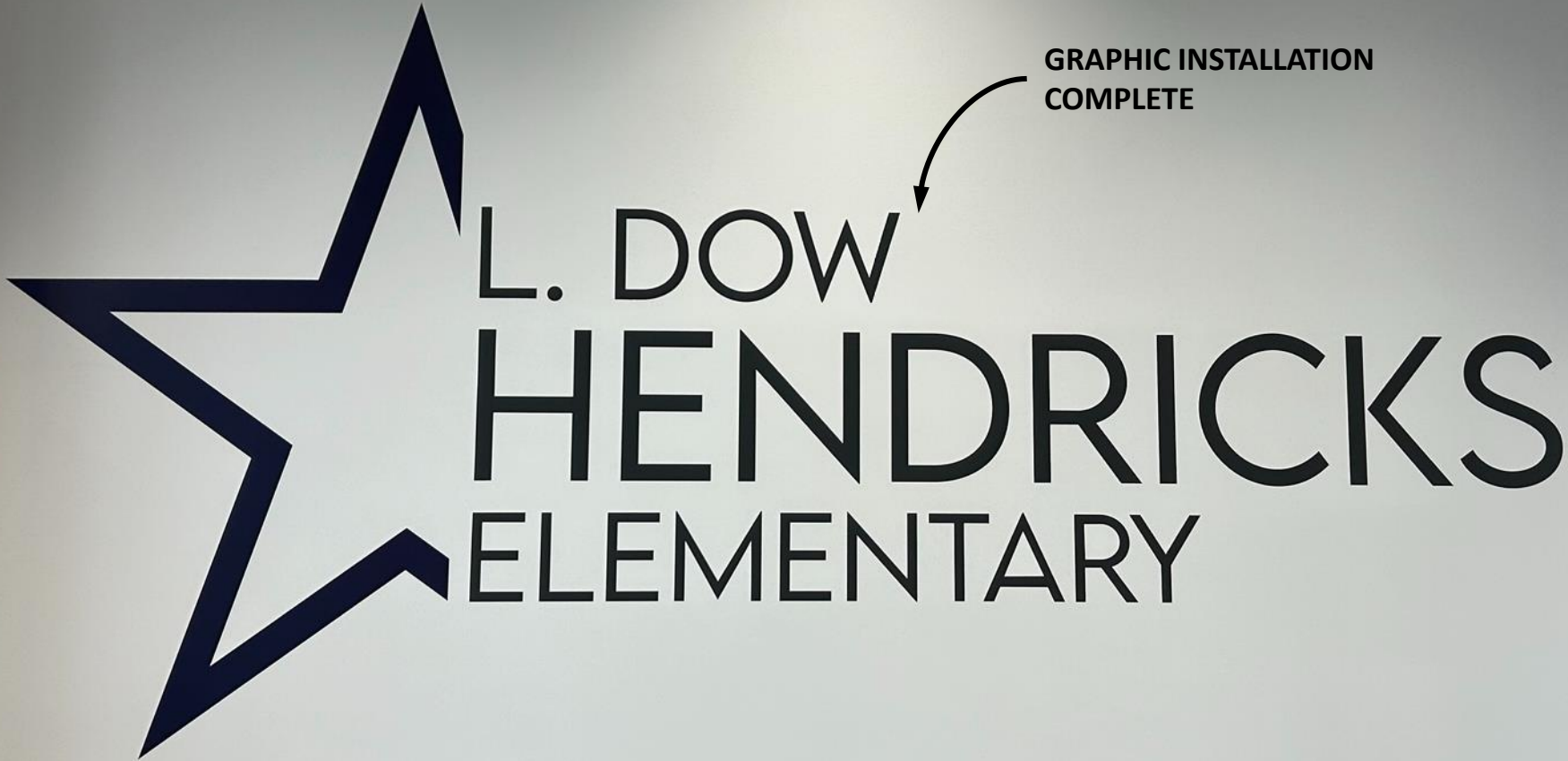
# L. Dow Hendricks Elementary School

## Construction Update - February 2025





L. Dow Hendricks Elementary School  
Construction Update – February 2025



GRAPHIC INSTALLATION  
COMPLETE





# L. Dow Hendricks Elementary School

Construction Update - February 2025



WRA





# L. Dow Hendricks Elementary School

Construction Update - February 2025

WALL GRAPHICS COMPLETE





# Construction Update – February 2025





# Anna ISD Administration Building

## Construction Update – February 2025



SITE WORK CONTINUES



# Anna ISD Administration Building

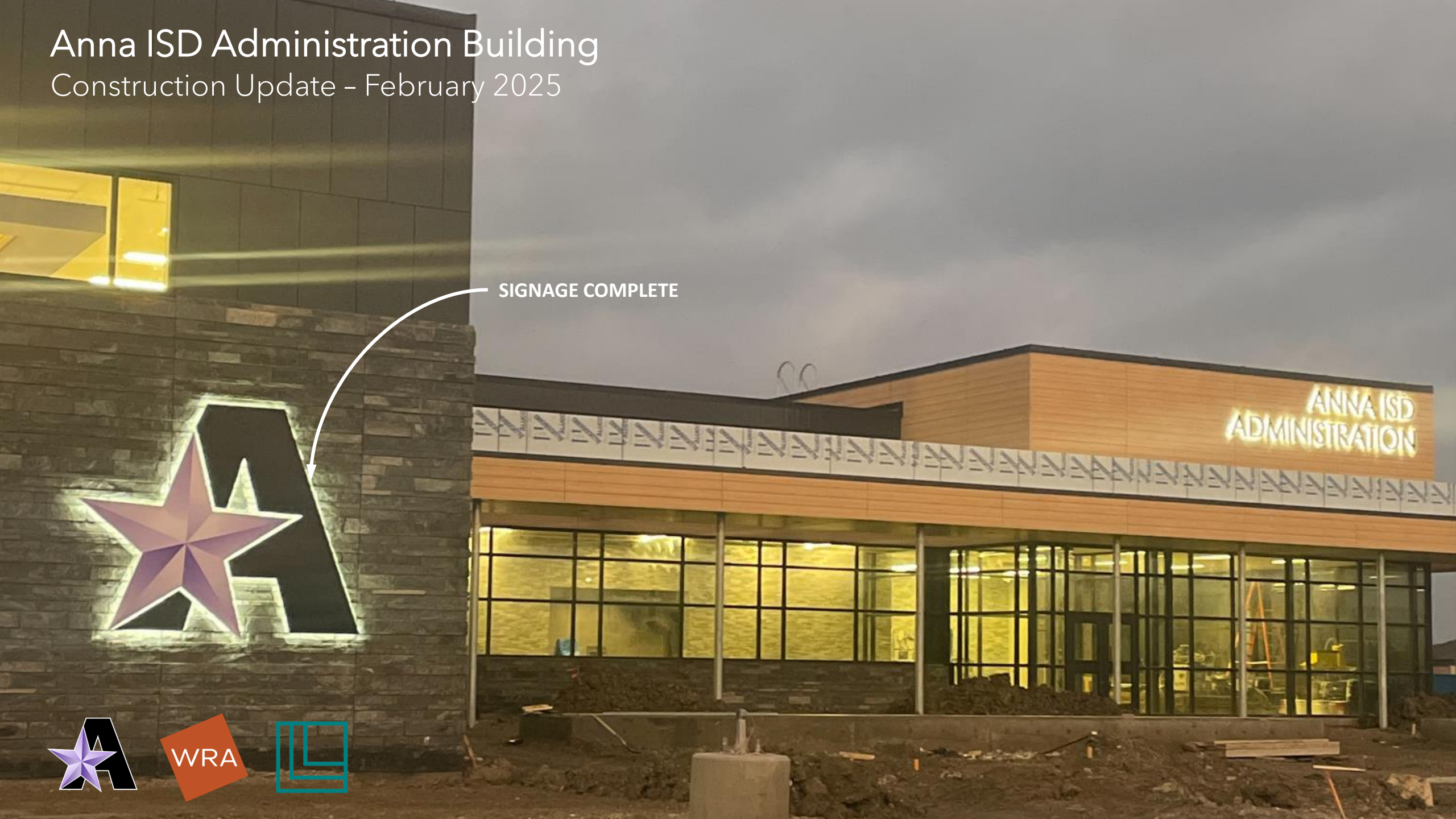
## Construction Update – February 2025





# Anna ISD Administration Building

Construction Update – February 2025



SIGNAGE COMPLETE





# Anna ISD Administration Building

Construction Update - February 2025

CEILING BAFFLES INSTALLED



WRA





# Anna ISD Administration Building

## Construction Update - February 2025



TERRAZZO INSTALLATION  
ON GOING



WRA





# Anna ISD Administration Building

## Construction Update - February 2025

RAILING INSTALLATION  
ON GOING

BOARD DAIS  
INSTALLED





# Anna ISD Administration Building

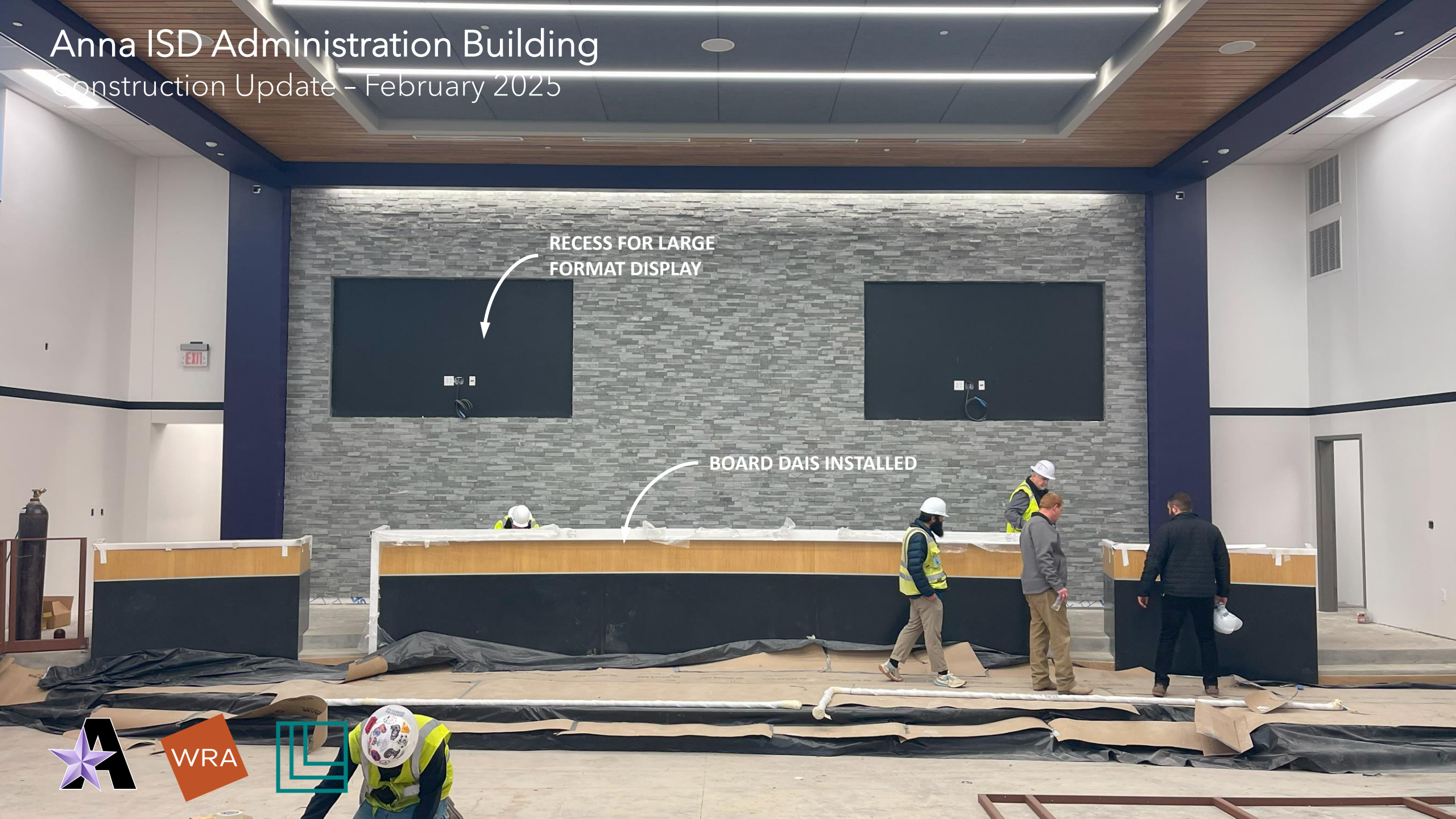
Construction Update - February 2025

RECESS FOR LARGE  
FORMAT DISPLAY

BOARD DAIS INSTALLED



WRA





# Anna ISD Administration Building

## Construction Update - February 2025



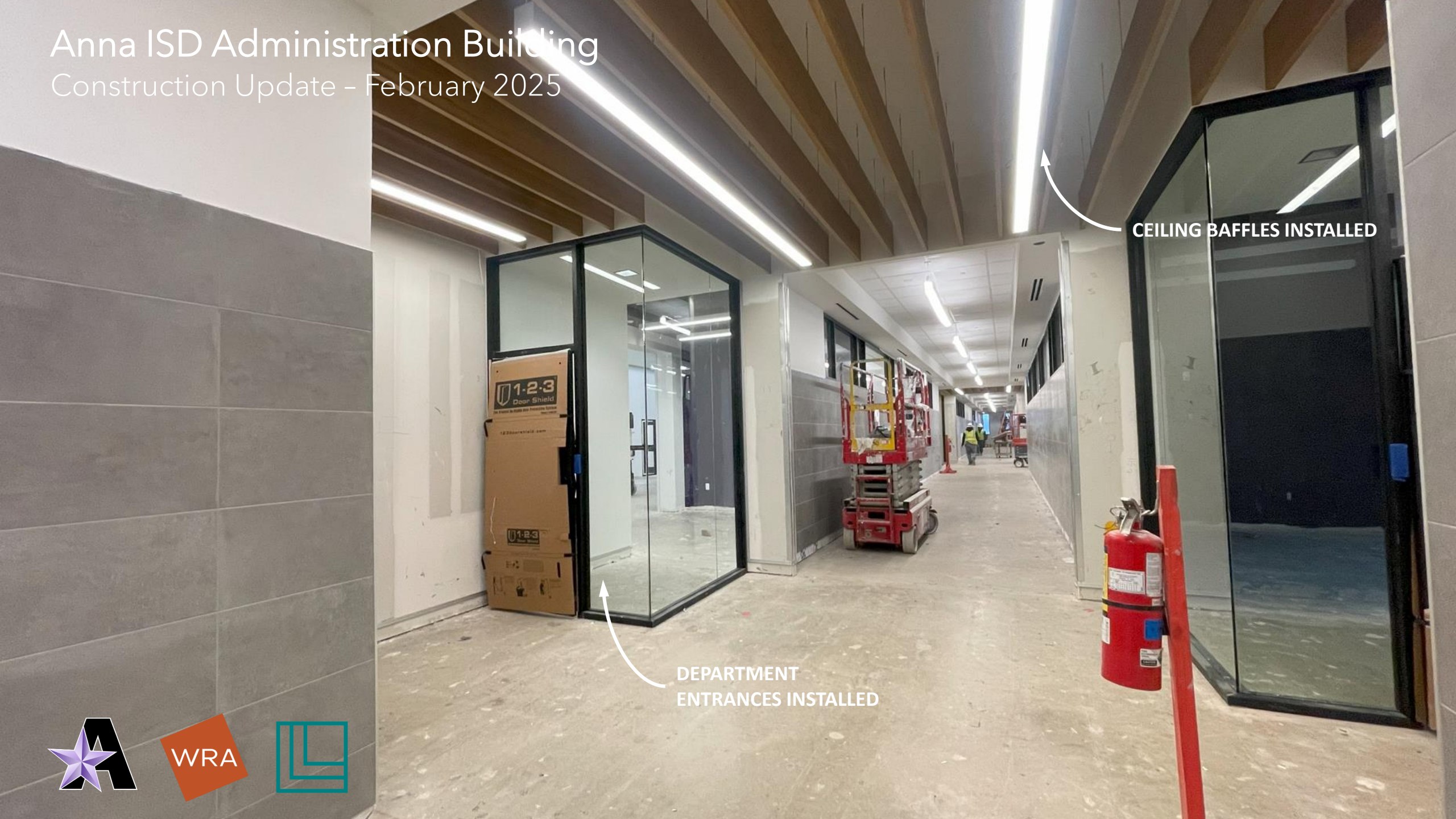
WRA





# Anna ISD Administration Building

Construction Update - February 2025



CEILING BAFFLES INSTALLED

DEPARTMENT  
ENTRANCES INSTALLED





# Anna ISD Administration Building

Construction Update - February 2025

FINISH PAINT  
COMPLETE

DISPLAY LOCATIONS  
PREPPED AND READY FOR  
DEVICES





# Anna ISD Administration Building

Construction Update - February 2025

**PORCH SCREEN WALL  
COMPLETE**







Q & A

