



CITY OF MEDFORD HAZARD MITIGATION PLAN (HMP) UPDATE

**PUBIC MEETING #1
27 JANUARY 2025**

City of Medford
Health Department



WELCOME FROM THE PROJECT TEAM!



City of Medford
Health Department

City of Medford Emergency Manager,
MaryAnn O'Connor, is responsible for
updating and coordinating the city's
Hazard Mitigation Planning (HMP).



MaryAnn O'Connor
Health Director & Emergency Manager
City of Medford



The City of Medford has hired primary
vendor, **ACBC Consulting**, to lead the
planning effort.

ACBC Consulting is dedicated to prioritizing **equity** by
engaging with community members and incorporating
local knowledge alongside **data-driven** insights.



Andreanne Breton-Carbonneau
Project Director



Kiara Tanta-Quidgeon
Project Coordinator

WHAT IS HAZARD MITIGATION PLANNING?

Hazard Mitigation Planning (HMP) aims to **reduce loss of life and property**, breaking the cycle of disaster damage and reconstruction.

HMP achieves this by first **identifying risks** and vulnerabilities, then **developing long-term protective strategies** against these risks and vulnerabilities.

WHY AN UPDATE?

Hazard Mitigation Plans (HMPs) must be updated every 5 years to stay current with risks and new data.

FEMA requires an update every 5 years for cities to qualify for federal disaster aid.



AGENDA

- 5:45 Welcome
- 5:50 Hazards Impacting Medford
- 6:00 Hazard Mitigation Planning Process
- 6:10 Public Participation Planning
- 6:20 Public Comment
- 6:40 Next Steps and Closeout
- 6:45 Adjournment

HAZARDS IMPACTING MEDFORD

- Hazards
- Direct Impacts

HAZARDS IMPACTING MEDFORD

Flooding & Dam Failure



Winter Storms & Nor'Easters

Hurricanes & Storm Surge

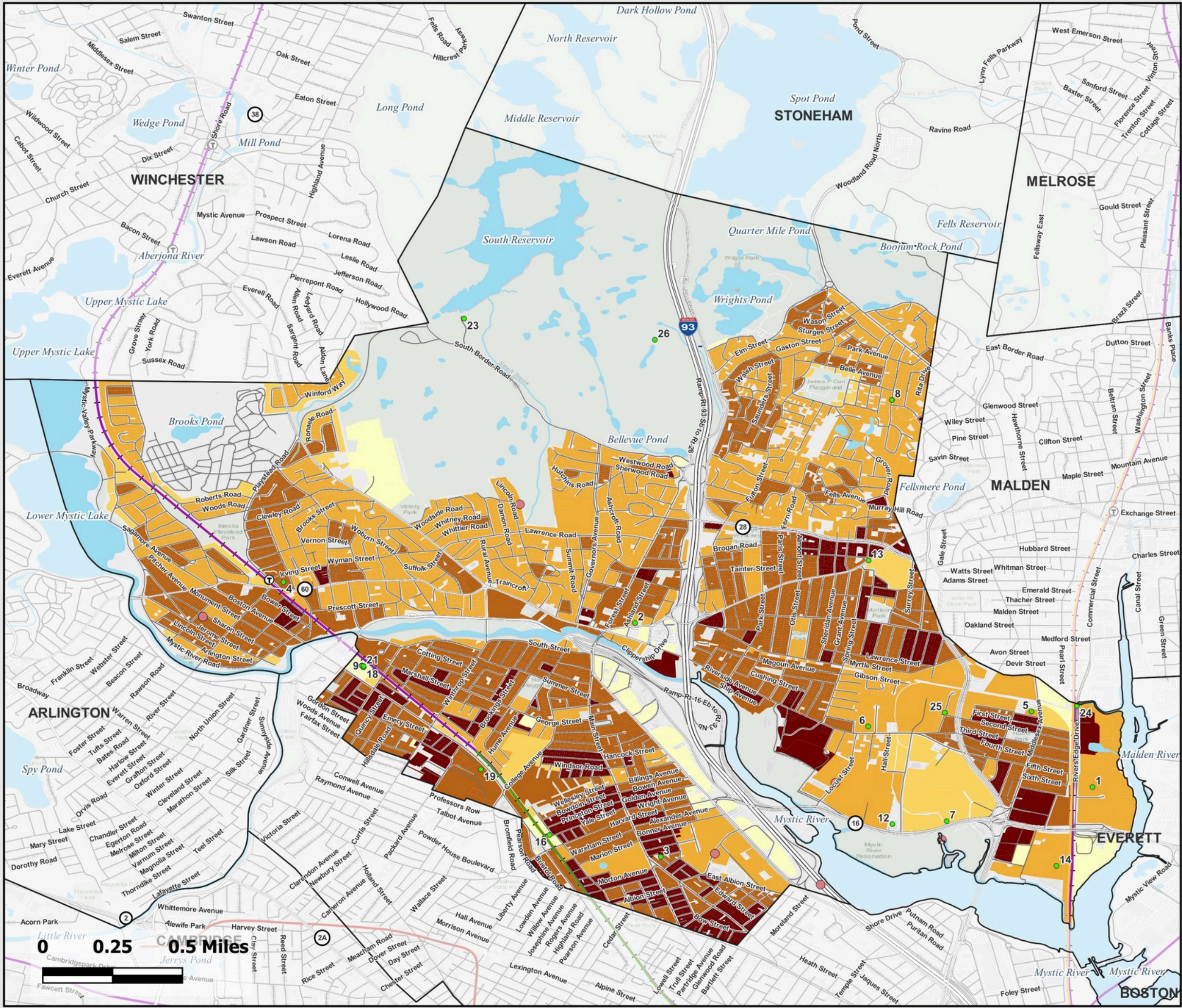


Extreme Heat & Heatwaves

Damage to Roads, Buildings, & Energy Supply



Drought & Brush Fires



FEMA Pre-Disaster
Mitigation Planning Grant
MEDFORD, MA

Map 1: Population Density
DRAFT

Sites

- Critical Infrastructure Sites
- Repetitive Loss Sites*

*See details in separate table

Trains Stations

- Trains
- Commuter Rail Lines

Subway Lines

- Blue
- Green
- Orange
- Red
- Silver

Water Bodies

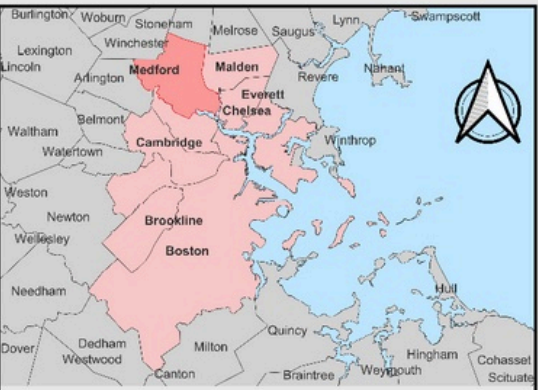
- Water Bodies

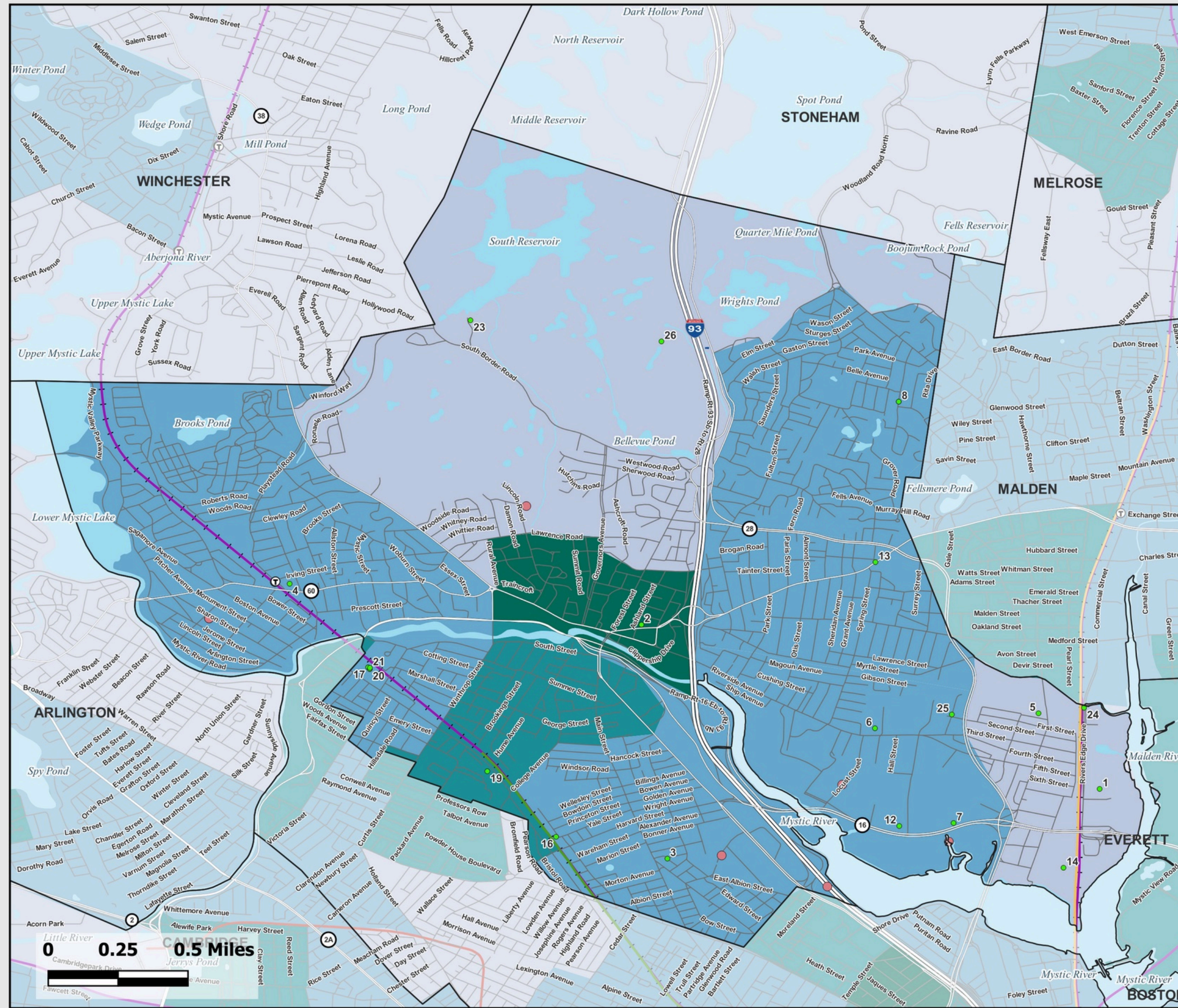
Population Density 2020 Census Blocks People Per Area

- 0 or No Data
- 0.1 - 5.0
- 5.1 - 15.0
- 15.1 - 30.0
- More than 30

All Roads

- Interstate
- U.S. Highway
- State Route
- Street





FEMA Pre-Disaster
Mitigation Planning Grant
MEDFORD, MA
Map 9: Environmental
Justice Index
DRAFT

Sites <ul style="list-style-type: none"> ● Critical Infrastructure Sites ● Repetitive Loss Sites* <small>*See details in separate table</small>	All Roads <ul style="list-style-type: none"> — Interstate — U.S. Highway — State Route — Street
<ul style="list-style-type: none"> ■ Water Bodies Ⓣ Trains Stations — Trains — Commuter Rail Lines 	Environmental Justice Index <ul style="list-style-type: none"> ■ Low ■ Low-Moderate ■ Moderate-High ■ High
Subway Lines <ul style="list-style-type: none"> — Blue — Green — Orange — Red — Silver 	



social vulnerability
 racial/ethnic minority
 poverty
 education
 employment
 housing type
 housing cost burden
 age
 disability
 english isolation

environmental burden
 air pollution
 toxic sites and mines
 build environment
 transportation
 water pollution

health vulnerability
 asthma
 cancer
 coronary heart disease
 diabetes
 mental health

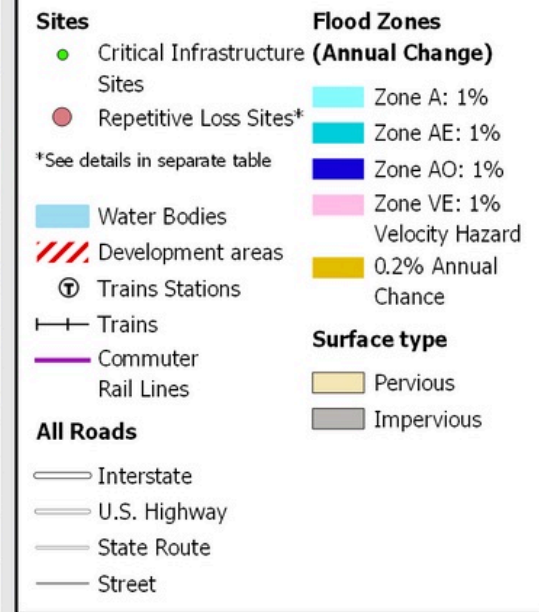
climate burden
 extreme heat
 wildfire
 flooding
 drought
 hurricane
 strong winds
 tornado



FEMA Pre-Disaster
Mitigation Planning Grant

MEDFORD, MA

Map 3.1: FEMA Flood
Zones
DRAFT

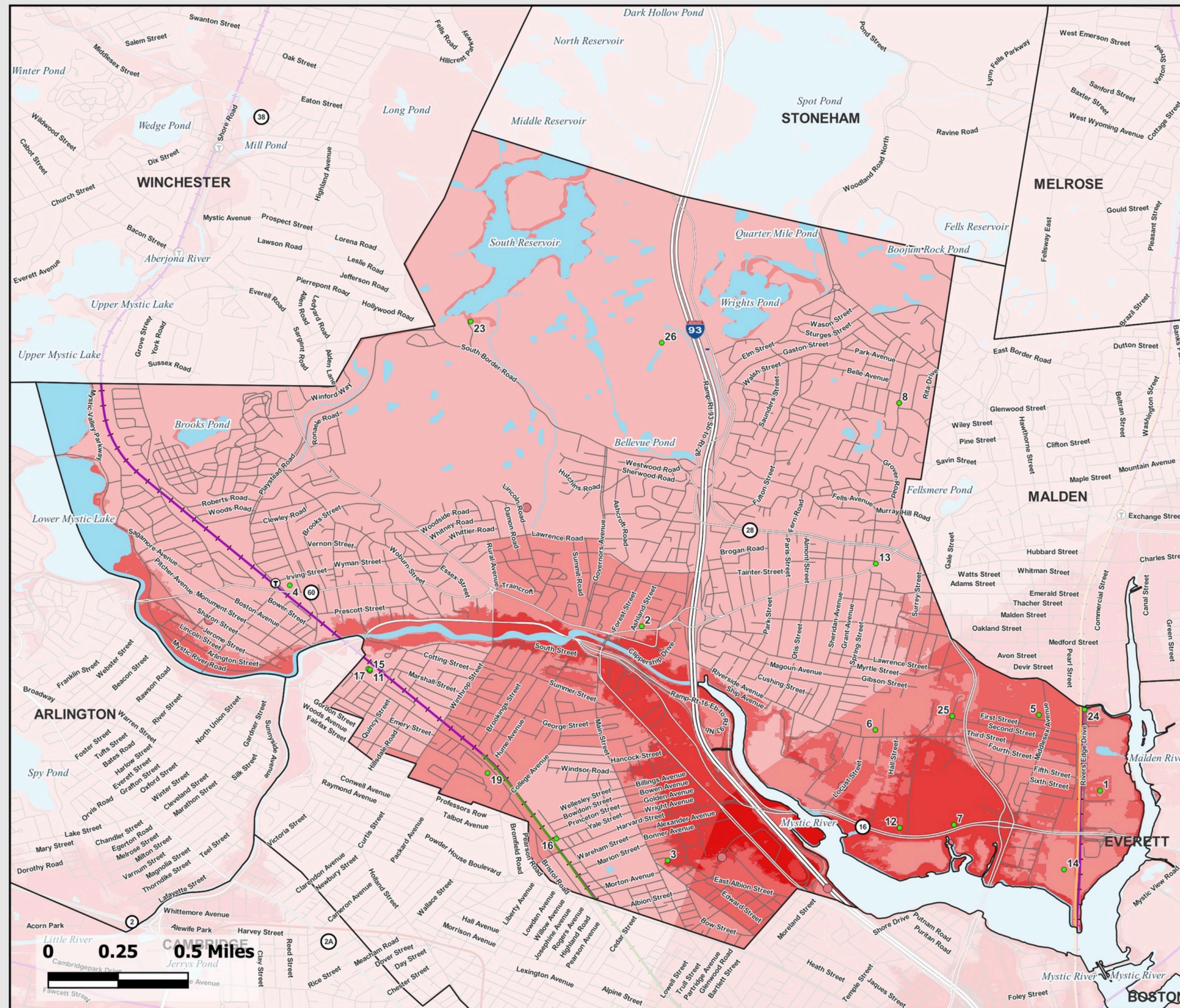


Zone AE: 1%

There's a small chance (1 out of 100) that a flood could happen in this area each year. Zone AE is usually near rivers, lakes, the coast, or places where lots of rain can cause flooding. If you have a loan from the government for your house in this area, you have to buy flood insurance.

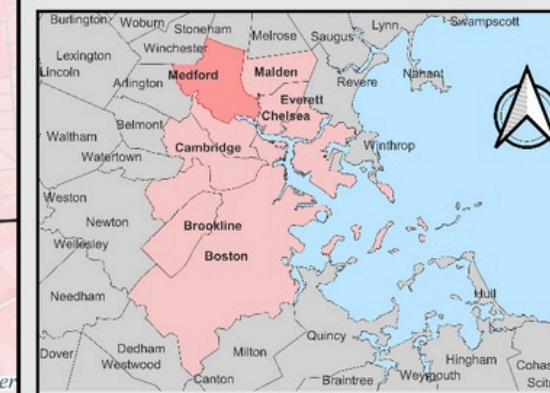
0.2% Annual Chance

There's a very small chance that a flood could happen in this area each year—just 1 out of 500. This means that it's not very likely, but it could still happen any year.



FEMA Pre-Disaster Mitigation Planning Grant
MEDFORD, MA
 Map 9: Environmental Justice Index
DRAFT

Sites ● Critical Infrastructure Sites ● Repetitive Loss Sites* <small>*See details in separate table</small> ■ Water Bodies ● Trains Stations — Trains — Commuter Rail Lines Subway Lines — Blue — Green — Orange — Red — Silver	All Roads — Interstate — U.S. Highway — State Route — Street Composite Natural Hazards ■ Low (1 Hazard) ■ Low - Moderate (2 Hazards) ■ Moderate (3 Hazards) ■ Moderate - High (4 Hazards) ■ High (5 Hazards)
---	--



Composite Risk

Different categories show areas where one or more hazards overlap. Composite natural hazard areas are composed of:

- Moderate to High Environmental Justice Index
- 100 year wind speed of 110 MPH or higher
- Moderate landslide risk
- Hurricane surge inundation areas
- FEMA Q3 Flood Zones

SOCIAL EQUITY CONSIDERATIONS

- **Diverse Backgrounds:** Medford's diversity in race, ethnicity, age, and income intersects with housing and neighborhood disparities, affecting access to hazard preparedness resources.
- **Multilingual Community:** Over a quarter (26.8%) of public school students speak a language other than English at home, and 10.4% may need extra support with English.
- **Inclusive Services Needed:** Nearly 12% of people in Massachusetts live with a disability, and many face challenges like poverty and limited access to important services.



ECOSYSTEM CONSIDERATIONS

- **Urban Challenges:** Medford is in the Boston Basin ecoregion with rolling hills, coastal bays, and estuaries. Colonization and industrialization caused habitat loss, erosion, and declines in biodiversity.
- **Indigenous Practice:** Colonization disrupted traditional practices to protect and care for ecosystems, but there are recent efforts to bring back traditional ecological knowledge.
- **Key Waterways:** The Mystic River runs through Medford, facing challenges like pollution and sediment buildup.



CLIMATE CONSIDERATIONS

- **Hazards and Climate:** Climate change increases hazards, like heavier rainfall, higher temperatures, and more extreme weather.
- **Previous Climate Plans:** Medford's 2001 Climate Action Plan was the first in MA, followed by a 2019 Vulnerability Assessment and a 2022 Climate Action and Adaptation Plan.
- **Community Impacts:** Focus on reducing hazard impacts in high-risk neighborhoods and communities with the greatest needs.



HAZARD MITIGATION PLANNING PROCESS

- Completed
- Ongoing
- Not yet started

HMP UPDATE STEPS

1.

**CONVENE A HAZARD MITIGATION
PLANNING COMMITTEE**

2

**IDENTIFY AND ASSESS LOCAL
HAZARDS AND COMMUNITY ASSETS**

3

**CONDUCT A HAZARD RISK
ASSESSMENT**

4

**ASSESS LOCAL CAPACITY TO
IMPLEMENT MITIGATION MEASURES**

5

**UPDATE AND IDENTIFY MITIGATION
GOALS AND OBJECTIVES**

6

**DEVELOP IMPLEMENTATION AND
EVALUATION STEPS**

HMP PLANNING COMMITTEE

This committee is divided into three distinct sub-committees, each playing a critical role in shaping a plan that is responsive to the needs of our diverse population.

1

EMERGENCY MANAGEMENT
Sub-Committee



EMERGENCY MANAGEMENT: Includes city officials and other municipal professionals related to developing hazard-resilient infrastructure and hazard response.

2

COMMUNITY ENGAGEMENT
Sub-Committee



COMMUNITY ENGAGEMENT: Comprised of the Medford Connects Community Engagement Team.

3.

SOCIAL RESILIENCE
Sub-Committee

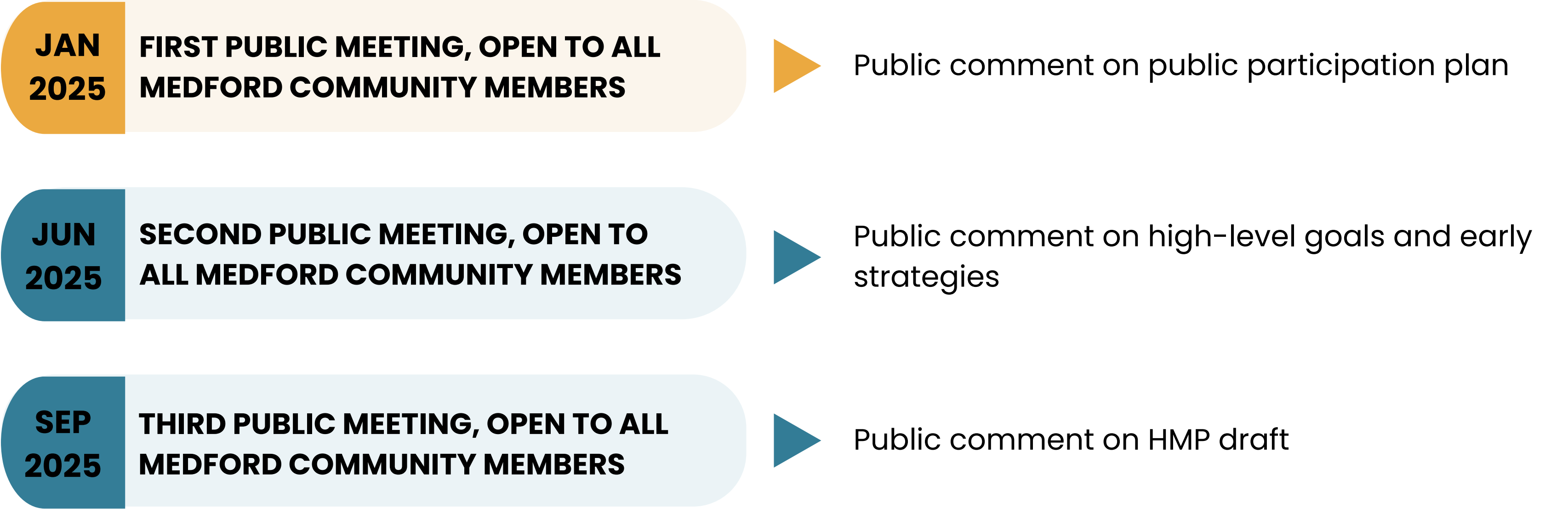


SOCIAL RESILIENCE: Community-Based Organizations (CBOs) and other stakeholders that focus on the broader social and economic factors.

PUBLIC PARTICIPATION PLANNING

- Completed
- Ongoing
- Not yet started

PUBLIC MEETING SCHEDULE



- Completed
- Ongoing
- Not yet started
- Internal

PUBLIC PARTICIPATION GOALS

Public participation is in addition to the public meetings

1.

**CONVENE A HAZARD MITIGATION
PLANNING COMMITTEE**

4

**ASSESS LOCAL CAPACITY TO
IMPLEMENT MITIGATION MEASURES**

2

**IDENTIFY AND ASSESS LOCAL
HAZARDS AND COMMUNITY ASSETS**



Public participation: community-
identified hazards and assets

5

**UPDATE AND IDENTIFY MITIGATION
GOALS AND OBJECTIVES**



Public participation: community-
identified goals and objectives

3

**CONDUCT A HAZARD RISK
ASSESSMENT**

6

**DEVELOP IMPLEMENTATION AND
EVALUATION STEPS**

PUBLIC PARTICIPATION OPTIONS

This slide outlines potential community engagement strategies for the Hazard Mitigation Plan (HMP)
Update based on input from the sub-committees.

A.

FOCUS GROUPS

5 focus groups, **10** participants in each



- **Pros:** Established relationships already gathering in the community, focus groups encourage in-depth discussion.
- **Cons:** Limited reach, may not reach a diverse population of Medford residents.

B.

COMMUNITY SURVEY

A simple survey, **200** respondents

C.

COMMUNITY DINNERS

2 dinners, open to **20** people

PUBLIC PARTICIPATION OPTIONS

This slide outlines potential community engagement strategies for the Hazard Mitigation Plan (HMP)
Update based on input from the sub-committees.

A.

FOCUS GROUPS

5 focus groups, **10** participants in each

B.

COMMUNITY SURVEY

A simple survey, **200** respondents

C.

COMMUNITY DINNERS

2 dinners, open to **20** people



- **Pros:** Broad reach to a larger number of residents than focus groups, provides numerical data that can be easily analyzed, time-efficient.
- **Cons:** Survey fatigue post-COVID-19 may limit response depth and rate, quantitative questions/answers limit response depth

PUBLIC PARTICIPATION OPTIONS

This slide outlines potential community engagement strategies for the Hazard Mitigation Plan (HMP)
Update based on input from the sub-committees.

A.

FOCUS GROUPS

5 focus groups, **10** participants in each

B.

COMMUNITY SURVEY

A simple survey, **200** respondents

C.

COMMUNITY DINNERS

2 dinners, open to **20** people



- **Pros:** Facilitates community dialogue in a comfortable setting, opportunity to engage with residents who may not participate in other formats
- **Cons:** Limited reach, may not reach a diverse population of Medford residents. Logistically more complex than focus groups and surveys.

PUBLIC PARTICIPATION PROPOSAL

Mixed approach between mini focus groups and a small sample community survey
Anticipated March-May 2025

A.

FOCUS GROUPS

5 focus groups, **5** participants in each



FOCUS GROUPS: Work with HMP sub-committee partners with regular community gatherings to facilitate 5 informal focus groups. Food will be available and each participant will be compensated \$50.



Partnering with Community-based Organizations (CBOs)

&

B.

COMMUNITY SURVEY

A simple survey, **100** respondents



COMMUNITY SURVEY: Distribute a short and simple community survey to a wide range of residents. \$25 will be offered to the first 100 people who complete the survey.

PUBLIC COMMENT

**Ideas and priorities for
making Medford safer to
hazards and more
resilient**

**Perspectives on public
participation proposal**

Your insights and perspectives are invaluable to the success of these efforts!

NEXT STEPS

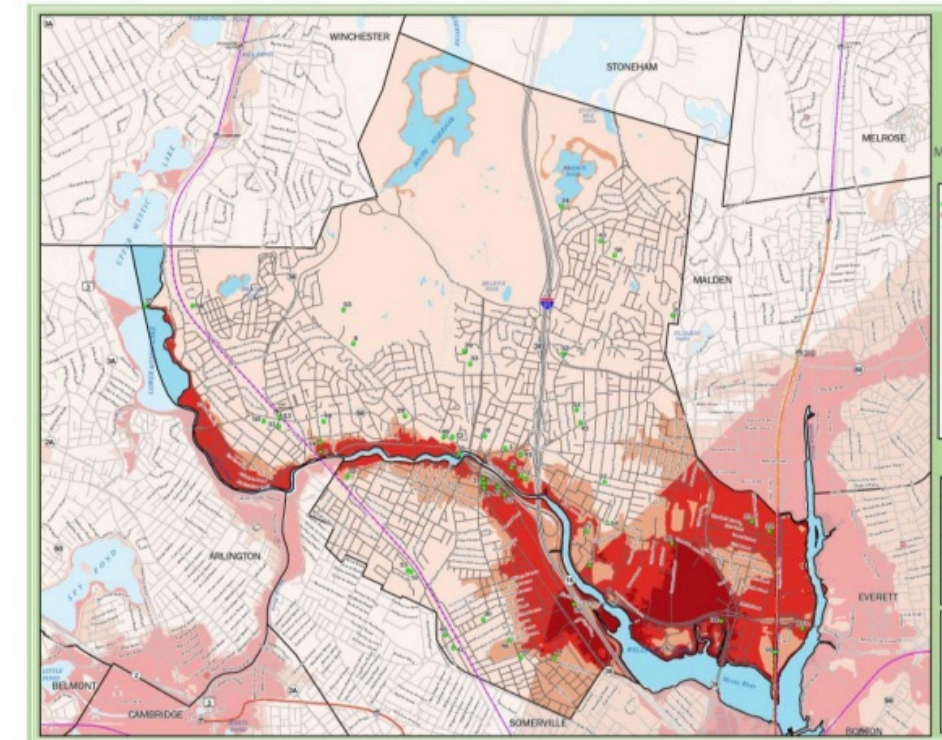
- Respond to public comment and integrate public comments, where possible.
- Finalize public participation planning with Sub-Committees.
- Host participation activities. Anticipated March-May 2025.
- Host Public Meeting #2 in June 2025.
 - Propose high-level goals and strategies.
 - Share results of public participation.

HAZARD MITIGATION PLAN (2017 UPDATE)



[Hazard Mitigation Plan Update Link](#)

CITY OF MEDFORD HAZARD MITIGATION PLAN 2017 PLAN UPDATE



Final Plan
FEMA Approval Pending Adoption
March 9, 2017



MaryAnn O'Connor,
Medford Health Director & Emergency Manager
moconnor@medford-ma.gov

Andreanne Breton-Carbonneau,
Principal, ACBC Consulting
andreanne@acbcconsulting.com

Kiara Tanta-Quidgeon,
Project Coordinator, ACBC Consulting
kiara@acbcconsulting.com

City of Medford
Health Department

