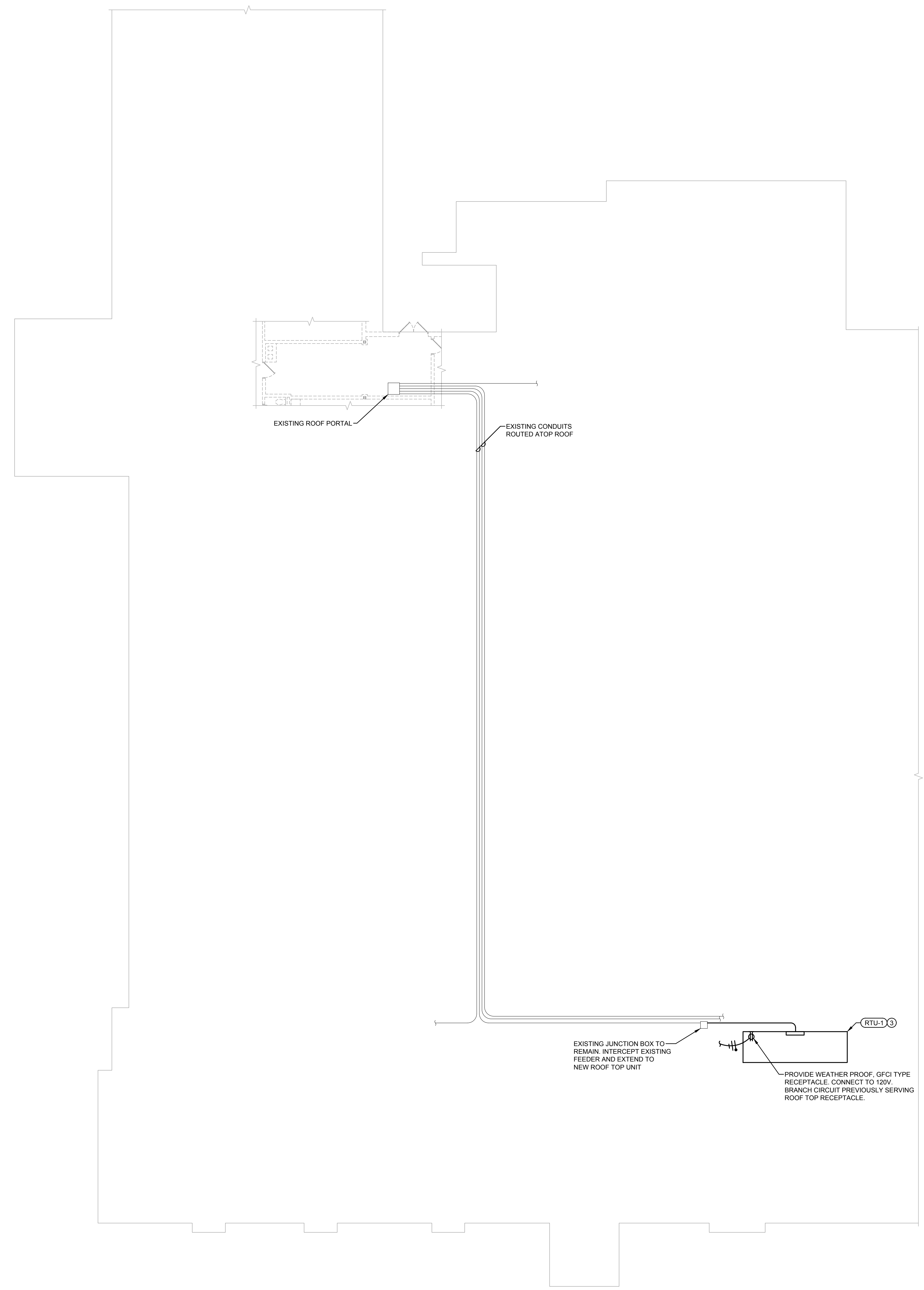


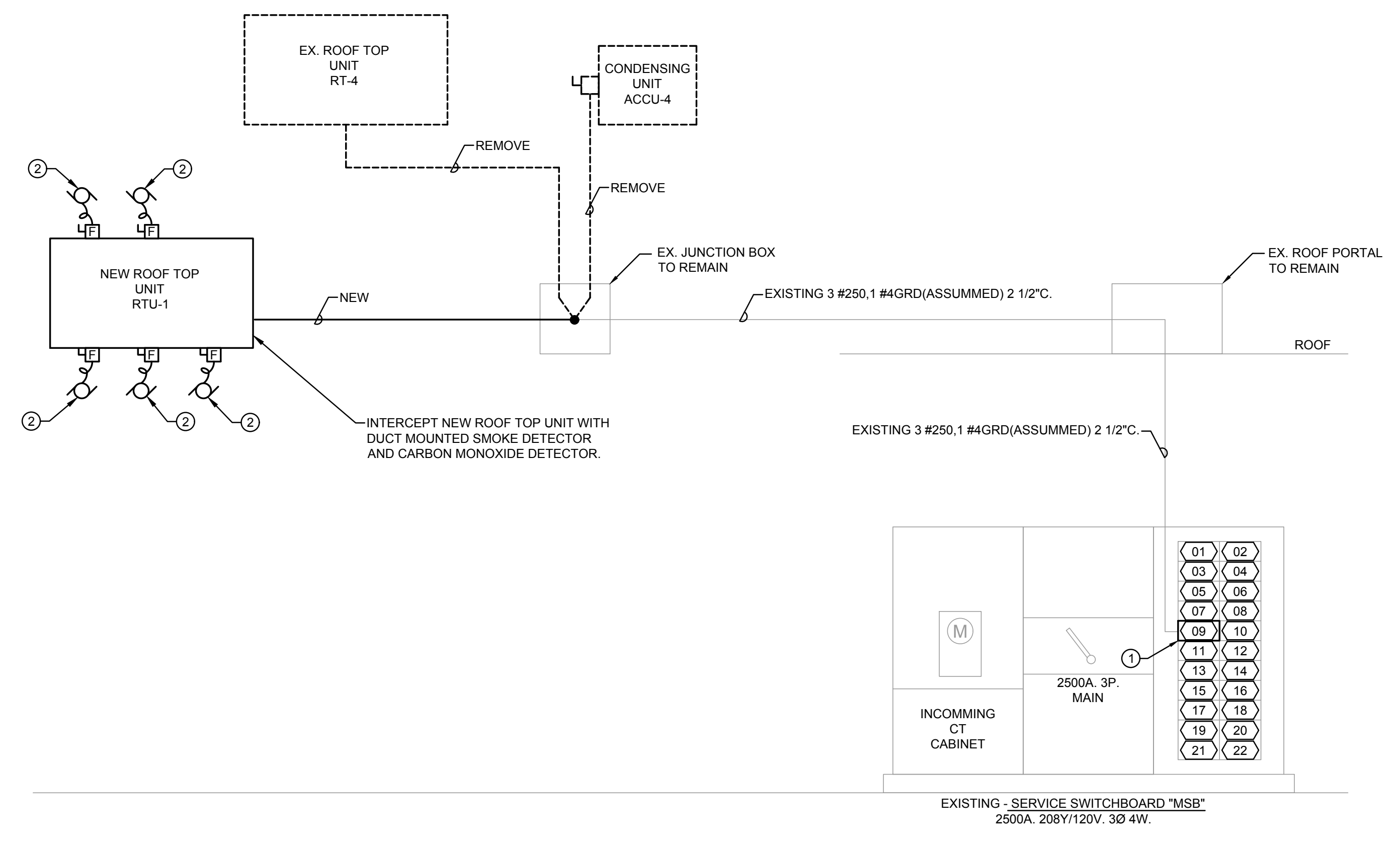
FILE: F:\886-F-1\CS2\886F1.E1.DWG SWMED BY: DBOYER DATE: 6/24/2024 TIME: 11:26 AM



**"MDP" SCHEDULE**

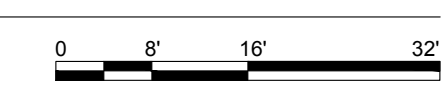
TAG	C/B SIZE	LOAD DESCRIPTION	REMARKS
01	30A, 3P	RT-E1	
02	30A, 3P	RT-E2	
03	100A, 3P	RTU-9	
04	100A, 3P	RTU-10	
05	250A, 3P	RTU-1 & CU-3	
06	200A, 3P	SPARE	
07	250A, 3P	RT-3 & CU-3	
08	250A, 3P	RT-5 & CU-5	
09	250A, 3P	RT-4 & CU-4	REPLACE CIRCUIT BREAKER WITH 150A, 3P.
10	400A, 3P	PANEL "LPD"	
11	400A, 3P	PANEL "TRP"	
12	400A, 3P	PANEL "LPH"	
13	400A, 3P	PANEL "LPE"	
14	400A, 3P	PANELS "A" & "B"	
15	400A, 3P	PANEL "LPK"	
16	400A, 3P	PANELS "AA" & "ELD-2"	
17	800A, 3P	PANEL "PP2"	
18		SPACE	
19	150A, 3P	PANEL "GYM"	
20	225A, 3P	MOBILE CLASSROOM	
21	100A, 3P	RTU-11	
22	30A, 3P	TVSS	

- DRAWING NOTES:**
- EXISTING 250A, 3P. CIRCUIT BREAKER TO REMOVED AND REPLACED WITH NEW 150A, 3P. CIRCUIT BREAKER COMPATIBLE WITH EXISTING GENERAL ELECTRIC SWITCHBOARD
  - ELECTRICAL CONTRACTOR SHALL FIELD WIRE REMOTE CONDENSING UNITS TO DISCONNECT SWITCH FURNISHED WITH AND PRE-WIRED TO RTU-1 REFER TO EQUIPMENT SHOP DRAWINGS FOR INSTALLATION INSTRUCTIONS.
  - REFER TO ELECTRICAL RISER DIAGRAM THIS SHEET FOR ADDITIONAL INFORMATION.



**ELECTRICAL RISER DIAGRAM**  
NO SCALE

**1 ROOF PLAN - ELECTRICAL**  
SCALE 3/32" = 1'-0"



Revisions:  
ISSUED FOR BID 10/14/2024

**CS2 DESIGN GROUP LLC**  
837 Oakton Street  
Elk Grove, IL 60007  
Tel: 847-981-1880  
Fax: 847-981-1885  
www.cs2designgroup.com

**ROOF PLAN - ELECTRICAL**

**ROOFTOP UNIT REPLACEMENT**  
RAYMOND ELLIS ELEMENTARY SCHOOL  
720 CENTRAL PARK DR, ROUND LAKE, IL 60073  
ROUND LAKE CUSD 116  
884 W NIPPERSINK RD  
ROUND LAKE, IL 60073

Issue Date:  
**24 JUNE 2024**

Drawn By:  
CS2

Job Number:  
886-F-1

**E1.1**

COPYRIGHT © 2024  
CS2 Design Group, LLC