

# EAST RAMAPO CENTRAL SCHOOL DISTRICT

[www.ercsd.org](http://www.ercsd.org)



*This is*  
**Me**

Leaning Into Literacy

**Ramapo High School  
Academy**

Thursday, February 13, 2025 @ 5:30 PM

# Department of Multilingual Education

845-577-6043

Katheryne Morales, Executive Director

[katmorales@ercsd.org](mailto:katmorales@ercsd.org)

Claribel Rodriguez, Director

[crodriguezwhitter@ercs.org](mailto:crodriguezwhitter@ercs.org)

Samantha Scherer, Director

[sscherer@ercsd.org](mailto:sscherer@ercsd.org)

Deymiss Caraballo, Assistant Director

[dcaraballo@ercsd.org](mailto:dcaraballo@ercsd.org)

Karen J. Pinel, Principal on Assignment

[kpinel@ercsd.org](mailto:kpinel@ercsd.org)



East Ramapo Central School District  
105 South Madison Avenue  
Spring Valley, NY 10977



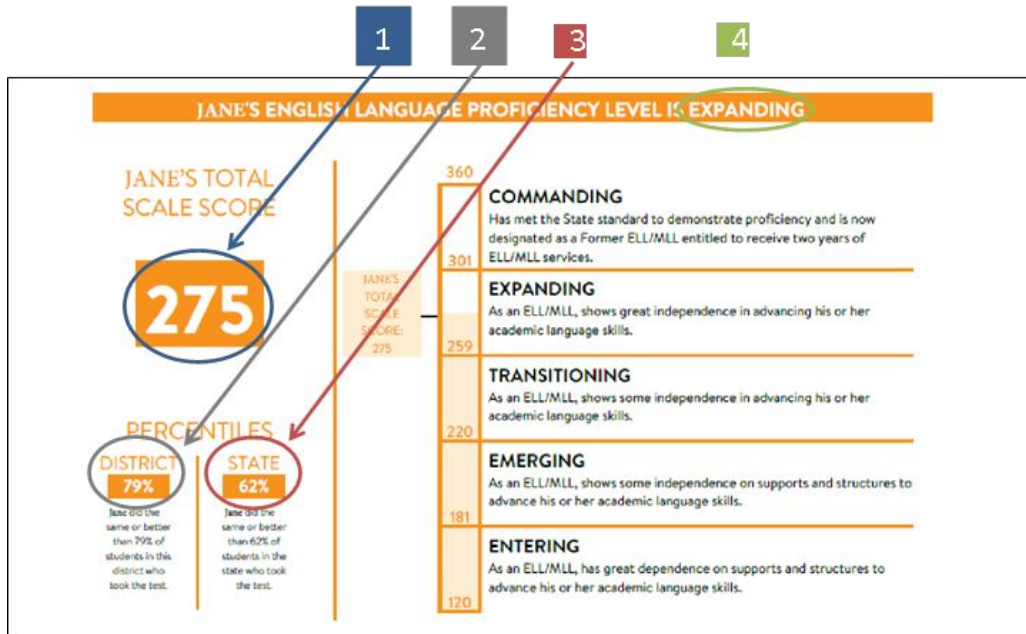
## NYSESLAT Evaluación de Inglés

- Es una evaluación del estado de NY que mide el nivel de inglés adquirido por los estudiantes que han sido identificados como aprendices del idioma inglés como nuevo idioma.
- Los estudiantes son evaluados anualmente en 4 modalidades diferentes: *Comprensión Auditiva, Comprensión de Lectura, Expresión Escrita y Expresión Oral.*
- Expresión Oral: **14 de abril**
- Comprensión de lectura, Expresión escrita y comprensión auditiva empezarán el **12 de mayo**

## NYSESLAT English Evaluation

- It is an assessment given by NYS that measures the level of English acquired by students who have been identified as ELLs (English Language Learners).
- Students are evaluated annually in 4 different modalities: *Listening, Reading, Writing and Speaking in English.*
- Speaking Section: **April 14th**
- Reading, Writing and Listening will begin on **May 12th**

# Understanding the NYSESLAT Score Report



[Understanding the NYSESLAT Score Report \(English\)](#)  
[NYSESLAT Parent Guide \(English\)](#)

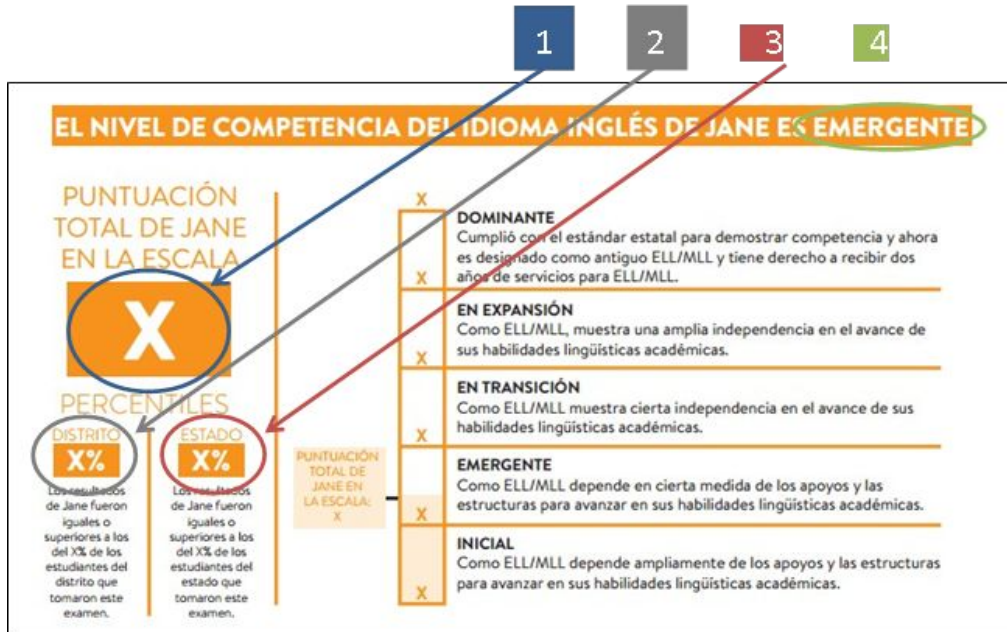
**1 Total Scale Score:** The Total Scale Score is determined by the number of points that your child earned on the NYSESLAT.

**2 District Percentile Rank:** The District Percentile Rank compares your child's scale score to the scale scores of the rest of the students at the same grade level who took the NYSESLAT this year.

**3 State Percentile Rank:** The State Percentile Rank compares your child's scale score to the scale scores of the rest of the students in the State at the same grade level who took the NYSESLAT this year.

**4 Your Child's Overall Proficiency Level:** The Overall Proficiency Level indicates the level of performance that your child achieved on the NYSESLAT based on his or her Total Scale Score. The NYSESLAT has five performance levels.

# Como comprender el informe de NYSESLAT



**1 Puntuación Total en la Escala:** la Puntuación Total en la Escala está determinada por la cantidad de puntos que su hijo obtuvo en la NYSESLAT.

**2 Rango Porcentual del Distrito:** el Rango Porcentual del Distrito compara la puntuación en la escala de su hijo con las puntuaciones en la escala del resto de los estudiantes del mismo nivel académico que realizaron la NYSESLAT este año.

**3 Rango Porcentual del Estado:** el Rango Porcentual del Estado compara la puntuación en la escala de su hijo con las puntuaciones en la escala del resto de los estudiantes del estado del mismo nivel académico que realizaron la NYSESLAT este año.

**4 Nivel de Dominio General de su Hijo:** el Nivel de Dominio General indica el nivel de rendimiento que su hijo alcanzó en la NYSESLAT en función de su Puntuación Total en la Escala. La NYSESLAT tiene cinco niveles de rendimiento.

[Como comprender el informe de NYSESLAT \(Español\)](#)  
[Información para padres sobre el examen NYSESLAT](#)

# What do the English Proficiency Levels Mean?

<u>Level</u>	<u>Description of English Language Proficiency Level</u>
<b>Entering</b>	A student at the Entering level has great dependence on supports and structures to advance academic language skills and has not yet met the linguistic demands necessary to demonstrate English language proficiency in a variety of academic contexts (settings).
<b>Emerging</b>	A student at the Emerging level has some dependence on supports and structures to advance academic language skills and has not yet met the linguistic demands necessary to demonstrate English language proficiency in a variety of academic contexts (settings).
<b>Transitioning</b>	A student at the Transitioning level shows some independence in advancing academic language skills, but has yet to meet the linguistic demands necessary to demonstrate English language proficiency in a variety of academic contexts (settings).
<b>Expanding</b>	A student at the Expanding level shows great independence in advancing academic language skills and is approaching the linguistic demands necessary to demonstrate English language proficiency in a variety of academic contexts (settings).
<b>Commanding</b>	A student at the Commanding level has met the linguistic demands necessary to demonstrate English language proficiency in a variety of academic contexts (settings). A student at this level is no longer considered an ELL student, but is entitled to receive two years of Former ELL services.



# ¿ QUÉ SIGNIFICAN LOS NIVELES DE DOMINIO DE INGLÉS?

## Nivel

## Descripción del nivel de dominio de inglés

### **Entering / Principiante**

Un estudiante en el nivel Principiante tiene gran dependencia de los recursos y estructuras para desarrollar sus habilidades lingüísticas académicas y todavía no ha alcanzado las exigencias lingüísticas necesarias para demostrar dominio del idioma inglés en diversos contextos o entornos académicos.

### **Emerging / Emergente**

Un estudiante en el nivel Emergente tiene cierta dependencia en los recursos y estructuras para desarrollar sus habilidades académicas lingüísticas y todavía no ha alcanzado las exigencias lingüísticas necesarias para demostrar dominio de idioma inglés en diversos contextos o entornos académicos.

### **Transitioning / En transición**

Un estudiante en el nivel Intermedio demuestra cierta independencia en desarrollar habilidades académicas lingüísticas pero todavía no ha alcanzado las exigencias lingüísticas necesarias para demostrar dominio de idioma inglés en diversos contextos o entornos académicos.

### **Expanding / En expansión**

Un estudiante en el nivel Avanzado demuestra gran independencia en desarrollar habilidades académicas lingüísticas y está cerca de conseguir las exigencias lingüísticas necesarias para demostrar dominio de idioma inglés en diversos contextos o entornos Académicos.

### **Commanding Competente**

Un estudiante en el nivel Competente ha alcanzado las exigencias lingüísticas necesarias para demostrar dominio de idioma inglés en diversos contextos o entornos académicos. Un estudiante en este nivel ya no es considerado un estudiante ELL, pero tiene derecho a recibir servicios para antiguos estudiantes ELL durante dos años.

# Exámenes del Estado

## State Tests

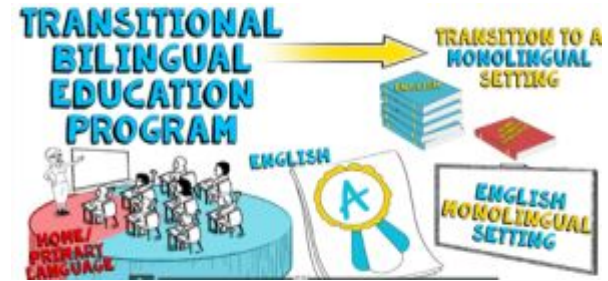
- Regentes del estado  
10 de junio al 25 de junio
  - Los horarios y requisitos serán proporcionados por la escuela.
- NYSESLAT  
(Áreas/Modalidades de competencia del idioma Inglés)-  
14 de abril - 24 de mayo
  - Expresión oral (individual)
  - Comprensión auditiva, comprensión de lectura, y expresión escrita (en grupo)



# Programas/ Programs

## Educación Bilingüe (BE)/ Bilingual Education (BE)

- Programa de Educación Bilingüe de Transición
- Transitional Bilingual Education Program



Los programas de Educación Bilingüe de Transición (TBE) ofrecen a los estudiantes del mismo idioma materno la oportunidad de aprender a hablar, comprender, leer y escribir en inglés mientras continúan aprendiendo contenido académico en su idioma materno.

Transitional Bilingual Education (TBE) programs offer students of the same home language the opportunity to learn to speak, understand, read, and write in English while continuing to learn academic content in their home language.

# Programas/ Programs



## Inglés como nuevo idioma (ENL)/ English as a New Language (ENL)

La instrucción en este programa, anteriormente conocido como Inglés como Segundo Idioma (ESL), enfatiza la adquisición del idioma inglés. En un programa de ENL, la instrucción de artes del lenguaje y del área de contenido se enseña en inglés *utilizando estrategias de instrucción de ENL específicas*.

Instruction in this program, formerly known as English as a Second Language (ESL), emphasizes English language acquisition. In an ENL program, language arts and content-area instruction are taught in English *using specific ENL instructional strategies*.

# Maneras de Ayudar en el Hogar / Ways to Help at home

- Crea una rutina diaria. Create a daily routine.



- Participa cuando puedas. Participate when you can.



- Priorizar la asistencia. Prioritize attendance.



- Celebre sus éxitos. Celebrate their successes.



- Estimule hábitos saludables. Encourage healthy habits.



# Parents' Bill of Rights for New York State's English Language Learners and Multilingual Learners / Declaración de derechos de los padres para los estudiantes que aprenden inglés y los estudiantes multilingües del estado de Nueva York

## THE STATE EDUCATION DEPARTMENT / THE UNIVERSITY OF THE STATE OF NEW YORK / ALBANY, NY 12234

Office of Bilingual Education and World Languages

53 Nassau Plaza, Room 504 Brooklyn, New York 11217  
Tel: (718) 724-2464 Fax: (718) 722-2464

65 Washington Avenue, Room 2228 Albany, New York 12234  
(518) 474-6770 Fax: (518) 474-2444

### PARENTS' BILL OF RIGHTS

#### FOR NEW YORK STATE'S ENGLISH LANGUAGE LEARNERS

The New York State Education Department (NYSED) Commissioner Regulations Part 154 provides you – the parents/guardians of English Language Learners (ELLs) – with:

1. The right for your children to receive a free public education in the school district where you live, regardless of your or your children's immigration status (i.e., whether your family members are citizens, immigrants, or undocumented) and the language that you or your children speak.
2. The right to enroll your children in school without being asked to provide information or paperwork which may reveal your or your children's immigration status. You cannot be asked to provide a social security card or number, an immigration visa or visa status, or citizenship documents or citizenship status.
3. The right under federal law to have a qualified interpreter/translator in your preferred language for critical interactions with the school district.
4. The right to have your children in a Bilingual Education (BE) program when there are 20 or more grade-level students that speak the same home/primary language.<sup>1</sup>
5. The right to write notes in English and your preferred language that your children have been identified as ELLs and will be placed in a Bilingual Education or English as a New Language (formerly called English as a Second Language) program.<sup>2</sup>
6. The right to a high-quality orientation session, provided by your school district, that focuses on state standards, tests, and school expectations for ELLs, as well as the program goals and requirements for Bilingual Education and English as a New Language. This orientation must occur before final school program placement, and must be in your preferred language.
7. The right to receive information about your children's English language development, and also about their home language development if they are in a Bilingual Education program.
8. The right to meet with school staff at least once a year. In addition to other generally required meetings, to discuss your children's overall learning and language development progress.
9. The right for your children to be placed in a Bilingual Education or English as a New Language program within 10 days of enrollment, and the right to opt out of a Bilingual Education program. At a minimum, your children must receive English as a New Language instruction.
10. The right for your children to transfer to another school in your district that offers Bilingual Education in your language or your children's original school does not offer such a program.
11. The right for your children to have equal access to all programming and services offered by the school district, appropriate to age and grade level including those required for graduation, and to all school programs available to other students.
12. The right for your children to receive all core content instruction, and to learn English and other subjects such as Reading Language Arts, Math, Science, and Social Studies at the same academic level as all other children. Being entitled to ELL services does not limit the ability to get core content instruction.
13. The right for your children to have full access to extracurricular activities (after-school clubs, sports, etc.) Being entitled to ELL services does not limit the ability to take part in extracurricular activities.
14. The right for your children to get support services (e.g., Academic Intervention Services) aligned with any intervention plans that the school/district provides to all students.
15. The right to have your children tested yearly to determine their English language progress, and to obtain information about your children's performance on academic tests, including New York State tests.
16. The right to have your children continuously enrolled year to year in a Bilingual Education or English as a New Language program while they remain ELLs.
17. The right to contact the New York State Education Department's Office of Bilingual Education and World Languages if any of the above rights have been violated. ELL Parent Hotline at: (800)-469-8224 or email: [nysepellhotline@nyu.edu](mailto:nysepellhotline@nyu.edu). For more information visit: [www.12.ny.gov/belb](http://www.12.ny.gov/belb) or write to: New York State Education Department Office of Bilingual Education & World Languages 53 Nassau Plaza, Room 504 Brooklyn, NY 11217

<sup>1</sup>In New York City, per the Mayor's Consent Decree, an ELL program is required in grades K-12 in every public school district, except the same language plus two co-language districts. There is not a sufficient number of speaking students in school for these areas to be listed; the district must provide ELL programs.

<sup>2</sup>All ELLs develop their English skills through "English as a New Language" courses. In addition, those in a Bilingual Education program also take Home Language 4th. Core content area courses (i.e., Math, Science, and Social Studies) are offered in a Bilingual Education program in both English and their home language. Those who opt out of a Bilingual Education program take core content area courses in English.

ELL Parent Hotline #: (800) 469-8224

You may also contact the parent hotline team in writing at:

NYS ELL Parent Website and Hotline Team  
c/o NYS Statewide Language RBERN at NYU Metro Center  
726 Broadway – 5th Floor  
New York, NY 10003

[nysepellhotline@nyu.edu](mailto:nysepellhotline@nyu.edu)

Link to ELL Parent Hotline information translated into multiple languages



To get a copy of this presentation, use your phone to scan the QR Code!



¡Para obtener una copia de esta presentación, escanea el código QR con tu teléfono!