



**CLAYTON COUNTY
PUBLIC SCHOOLS**

A Quarterly Insight...

In this issue

- Building From the Inside Out
- Grand Opening
- Groundbreakings
- New Team Members
- Project Updates
- Social Media
- Upcoming Projects

**WINTER
2025**

SPLOST | Construction



Lovejoy High

The **Lovejoy High School** renovation and modernization project officially began with a groundbreaking ceremony on September 17, 2024. The project includes the demolition and replacement of the administrative area and media center, along with the construction of a new competition gym and a two-story addition featuring 25 classrooms. Interior renovations will encompass new finishes, windows, low-voltage systems, and a roof replacement to improve both aesthetics and functionality. The exterior upgrades will feature new turf fields for baseball, football, and softball, enhancing athletic facilities for student-athletes. Designed by CDH Partners and managed by Evergreen Construction, the project carries a total cost of \$126,987,204.

**SPLOST
DOLLARS
AT WORK**



Riverdale Early Learning Center



The **Riverdale Early Learning Center** is designed to support early childhood education. Spanning approximately 82,000 square feet, the center will house a Pre-K facility with 24 classrooms, a play area, cafeteria, STEM lab, music and art rooms, and a media center. Additionally, a Wrap-Around Services facility will provide offices, evaluation spaces, a clinic, and therapy areas. Designed by PBK, Inc. and constructed by MEJA Construction, the \$43,260,000.00 project officially began with a groundbreaking ceremony on December 5, 2024.



North Clayton High

On December 11, 2024, we marked the beginning of the new **North Clayton High School**. The new school campus will be a modern three-story facility designed to accommodate 1,700 students. It will feature classrooms, science labs, a fine arts suite, CTAE classrooms, a 500-seat auditorium, and both competition and auxiliary gyms. The site will also include turf softball and baseball fields, practice fields, and tennis courts to support student athletics. This project has been designed by Perkins & Will and will be constructed by Carroll Daniel Construction.



Rosenwald School

The **Rosenwald School** renovation is making significant progress toward modernizing the historic facility while preserving its legacy. Structural and wall framing have reached 95% completion, and inspections for framing, plumbing, and mechanical rough-ins have largely passed. The project includes upgrades to HVAC, lighting, low voltage systems, plumbing, roofing, and finishes, with features such as a conference area, model classroom, and museum being incorporated. Subfloor installation is complete, and roof work—including fascia replacement and shingle installation—is finished, ensuring the building is weather-tight. Mechanical, electrical, and plumbing work is advancing steadily. Ductwork and copper refrigerant lines are being installed, with exterior lines concealed in painted sheet metal. Electrical conduit and wiring are in place, and panels are set for installation. Exterior improvements, including sidewalks, ramps, and a pad for mechanical equipment, are being formed, with concrete pours planned pending weather. Insulation for walls, ceilings, and copper pipes is underway, and drywall installation will proceed upon approval from the authority having jurisdiction. The project is currently on track for completion by mid-May 2025.



Central Office



Significant progress has been made on the **Central Office** renovation. The HVAC system has seen substantial updates, including the installation of a vent on the boiler regulator, start-up of six roof units, and continued ductwork installation in the new office suite in Zone D. The roofing subcontractor completed the installation of metal coping on the parapet walls, marking progress on Phase 1 roof work. Electrical upgrades have advanced with the removal of old fixtures, the installation of new fixtures in Zone C, and ongoing conduit installation for electrical, data, and fire alarm systems in Zones C and D. Additionally, fire suppression piping has been installed in Zone D, and sprinkler heads across Phase 1 have been replaced. Structural and interior improvements are also underway. The concrete subcontractor poured the Zone C slab on deck and the Zone D column bases, while addressing repairs to areas cut for subsurface drain installation. The framing and drywall subcontractor completed framing for all offices in Zone D, installed door frames, and patched areas to align new and existing framing. These updates, alongside continued erosion control measures and exterior improvements, highlight steady progress on the comprehensive modernization of the Central Office.

Convocation Center



The **Convention Center and College & Career Academy** projects have made significant progress. Interior work is advancing with the completion of metal framing for classrooms and offices, ongoing drywall installation, and HVAC ductwork and roofing nearing completion. Exterior glazing is nearly finished, marking substantial progress on the building's enclosure. In the arena, construction is progressing across multiple fronts. Steel erection is nearly complete, and preparations are underway for the installation of precast risers. Concrete work has advanced, with shear walls and interior columns poured, and the slab-on-grade for sectors 2 and 4 scheduled to begin soon. Fireproofing is mostly complete, and block masonry continues plumbing, and HVAC installations are ongoing across all sectors, with fire sprinkler rough-ins progressing on multiple floors. The project remains on track with active coordination among trades to maintain momentum.

Forest Park Middle

The construction of the 228,000 square-foot, 3-story **Forest Park Middle School** is well underway, with significant progress across various sectors. The facility, designed to include 74 instructional units, a fine arts suite, a gym, a cafeteria, and a media center, is shaping up steadily. Foundations and slabs for multiple sectors are complete, and steel detailing is progressing in Sectors F, E, and C. Interior and exterior masonry work, including CMU walls and brick installation, is ongoing, with substantial progress in Sectors B, C, E, and F. Roofing work continues, and window installations in Sector C are advancing alongside exterior finishing. Mechanical, electrical, and plumbing systems are actively being installed, including HVAC ductwork, refrigerant lines, plumbing rough-ins, and fire suppression systems.

Electrical work has progressed to pulling feeder wires to panels, and temporary lighting is operational in Sector F. Specialty work, such as light gauge framing, fireproofing, and priming of block walls, continues across multiple sectors. Site work for the athletic field and press box is also advancing, with retaining walls and footings being prepared. The project remains on schedule, with a transformer now on-site to facilitate the building's energization, bringing the school closer to completion.



Church Street Elementary

Renovation and modernization efforts are progressing at **Church Street Elementary School**. The project includes interior upgrades such as new finishes, HVAC replacement, window replacements, and modernization of the media center, along with exterior improvements like new playgrounds, landscaping, and a monument sign. Phase 1 began during the Christmas break, with classroom trailers brought onsite to temporarily house 5th graders. Asbestos abatement and demolition have been completed, and rough-ins for plumbing, mechanical, and electrical systems are finished. Upcoming work includes flooring, restroom fixtures, painting, millwork, and ceiling installations to complete Phase 1 and transition to the next phase.



K.W. White Maintenance Complex



The renovation of the **K.W. White Maintenance Complex** is nearing completion, with significant progress across multiple areas. MEJA is addressing punch list items for the office building, cooler and freezer, and interior signage has been installed. The sprinkler system installation in the warehouse, managed by Sprinkler of Atlanta, is nearly complete, and fire sprinkler piping continues to be installed. Video surveillance cameras have been installed and programmed by IES Communications, and a rolling gate for the employee parking lot, along with access control, has been installed and awaits final electrical connections by D&D Electric. Additional upgrades include a new electric range, hood, and cabinet in the maintenance break room, while the monument sign lettering and generator replacement are scheduled for completion in the coming months. Final inspections and testing are ongoing to wrap up the project.

Athletic Improvements: Group A, B and Mt. Zion High

The modernization and renovation projects at Groups A+ B and Mt. Zion High athletics have made substantial progress. Fields at Charles R. Drew, Forest Park, Jonesboro, Mundy's Mill, and Riverdale High Schools are substantially complete and in the punch list phase, with upgrades including new dugouts, bleachers, scoreboards, and irrigation systems. Gym renovations at Forest Park are complete, featuring new bleachers, refinished floors, and scoreboards. At Mt. Zion, significant improvements include a new pressbox, bleachers, band tower, combined turf field for softball and baseball, and a resurfaced track. Final tasks include drainage improvements, asphalt topping for tracks, and parking lot repaving.



Riverdale High



Mundy's Mill High



Jonesboro High



Charles Drew High



Forest Park High



Mt. Zion High

Martha E. Stilwell School of the Arts



Black box improvements are complete which included the addition of risers and a stage as well as control room and lighting improvements in the existing black box. Also, included new paint, ceilings and a green screen in theater classrooms.

Kay R. Pace School of the Arts



We proudly unveiled the Dr. Donna Jackson Black Box Theater at the Kay R. Pace & M.D. Roberts School of Arts on January 16, 2025. This facility will foster creativity and excellence in dance, music, and theater.

Electric Vehicle Charging Stations



The installation of electric vehicle charging stations district wide is near completion with all high school locations complete and currently in use, only the CCPS Central Office location is remaining. Once GA Power completes energizing the location, all sites will be ready for use.

Ash Street Center



The Ash Street Learning Center has been enhanced with a new playground and indoor playroom, providing students with safe and engaging spaces for recreation and learning. The playground features modern equipment that promotes physical activity and social interaction, while the playroom offers a structured environment for active learning and motor skill development.

Clayton Eagles Adaptive Sports Complex

The Clayton Eagles Athletic Complex is near completion. The former Lovejoy Middle School received upgrades and modifications to accommodate the district's adaptive sports team and league games. The scope included gym upgrades, a new weight room, trophy cases, new equipment, coaches offices, scoreboards, concessions and dining area. Outdoor modifications to include bocce ball and pickleball will follow.



Districtwide Stadium Upgrades

The stadiums of the Clayton County Public Schools have all received upgrades over the past year to provide a better experience for students and spectators. Upgrades included artificial turf replacement and rubber track resurfacing at Twelve Oaks, Tara and Southern Crescent stadiums. Video display scoreboards were installed at Southern Crescent and Twelve Oaks stadiums, Tara and Steele Road stadiums were the only two stadiums with these previously. Twelve Oaks Stadium also received, repainting of their grandstands and renovation of its pressbox. Lastly, all stadiums received huddle camera and internet installation.

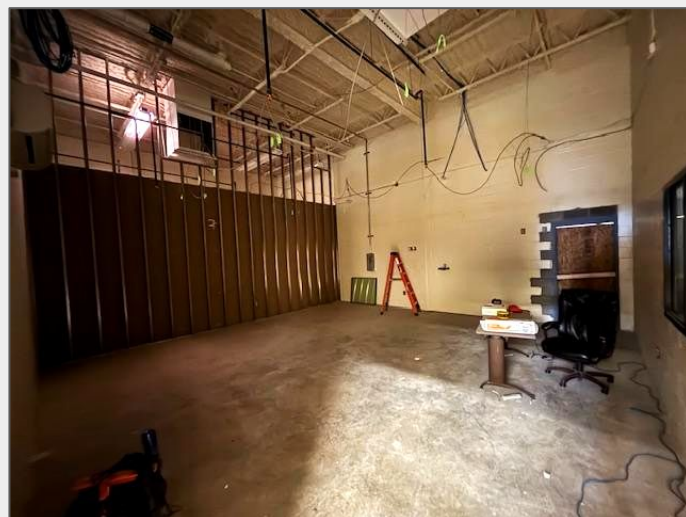


School Based Health Centers

Joseph H. Huie Elementary, Lee Street Elementary, and Forest Park Middle were selected by the governor for a grant to receive a School-Based Health Center. These health centers will provide medical professionals for students, staff, and the community. Forest Park Middle's health center is scheduled to open in Summer 2025 along with the rest of the overall project. Huie and Lee Street are targeted for completion by March 2025. Both sites have already undergone demolition. Drainage for the exam room sinks has been installed, and framing has begun. Within the next few weeks, these spaces will be transformed into new health clinics for these two communities.



Perry Learning Center



The Perry Learning Center is undergoing a renovation to expand its facilities and enhance its role as a community resource. This project includes the addition of a new classroom, a kitchen, a print room, a laundry room, and several storage rooms to improve functionality and accessibility for students and the local community. The kitchen, print room, and laundry room are specifically designed to serve the broader community, providing essential services and skill-building opportunities. The kitchen will support educational programs and community meal initiatives, the print room will offer printing and copying services, and the laundry room will be available for both students and community members in need of access to washing facilities. The addition of a new classroom will enhance the center's educational capacity, allowing for expanded learning opportunities. The new storage rooms will improve organization and efficiency, ensuring that materials and equipment are properly maintained. This renovation aligns with the Perry Learning Center's mission to provide a supportive and resourceful learning environment, benefiting both students and the surrounding community.



Tara Stadium Field House



Tara Stadium, a historic multi-use stadium in Jonesboro, GA, is set to undergo a comprehensive renovation to modernize its facilities and enhance the overall spectator experience. The scope of work includes replacing the existing fieldhouse with a brand-new, multi-purpose, three-story facility designed to accommodate team locker rooms, coaching offices, training areas, and multi-functional event spaces. Additional upgrades include fresh paint for the grandstands, improved accessibility features, and other minor enhancements throughout the stadium to improve safety and aesthetics. Currently, the fieldhouse is undergoing asbestos abatement in preparation for demolition, marking the first major step in the renovation process. This project has been designed by Southern A&E and will be constructed by J&R Construction.



Groundbreakings



Riverdale Early Learning Center



North Clayton High

Groundbreaking ceremonies took place for both the Riverdale Early Center and North Clayton High in December of 2024. The community, CCPS staff, students and leadership officials all attended for support and the excitement of these commencing these two beautiful facilities. A special thank you to the North Clayton High students for their wonderful performances.

Upcoming Projects



Group V HVAC & Roof Replacements
 [Jonesboro Middle-River's Edge Elementary- E.J. Swint Elementary]

Group VI HVAC & Roof Replacements
 [Charles Drew High-Adamson Middle-Robert T. Smith Elementary]

Northcutt Elementary & North Clayton Middle Renovations

Districtwide School Monument Signs

W.A. Fountain - Unidos Dual Language Elementary School

Welcome to the Team

We would like to cordially welcome aboard our newest team members **Sheeily Carela-Sosa**, Administrative Assistant II, and **Torrey Bryant**, Project Engineer, to CCPS Construction Department. As a team, we strive to build a better tomorrow today, project by project.



Stay connected with the CCPS Construction Department on:

Instagram:
Follow [@Ccpsconstruction](#)

The purpose of our Instagram page is to give behind the scenes glimpses, highlights, and real time updates of our daily activities.

YouTube:
Subscribe [@CCPSSPLOST](#)

Our YouTube channel is the home to progress and completion project videos where the community is able to watch their SPLOST dollars at work.

Building From The Inside Out

The CCPS Construction Department remains dedicated to making a positive impact—not just on our buildings, but also on the organizations within our community. With a commitment to giving back, our team took the initiative to support B.C. Haynie Elementary and the Perry Learning Center. The department proudly donated a variety of essential supplies, allowing the facilities to use them as needed. We extend our sincere gratitude to NOVA Engineering & Environmental for their generous contribution in making this donation possible. As we continue to build a better tomorrow, today, we look forward to more opportunities to serve and uplift our community.

