



BOARD MEETING UPDATE

February 18th, 2025

OSPI - SEISMIC SAFETY GRANT PROGRAM UPDATE

Information provided by OSPI School Seismic Safety Program Guidance Document



CSG *Specialists in School Buildings + CM PM Services*

A program of ESD 112.

WHERE ARE WE IN THE PROCESS?



Phase I – Geotechnical + Structural Analysis

- Grant Request + Award
- Preliminary Geotechnical + Structural investigations, analysis and reports.
- Committee Reviews for geotechnical and site analysis reports.
- Conceptual Budget Authorization by OSPI pending Seismic Committee Review.

Phase II – Conceptual Design

- Educational Specifications, Programming, Schematic Design, Budget Refinement
- Committee Review and Authorizations

Phase III – Design

- Design Development + Construction Documents
- Committee Review and Authorizations

Phase IV – Construction

- Bid + Construction



CSG

Specialists in School Buildings + CM PM Services

A program of ESD 112.

WHAT'S NEXT:

24/25 SCHOOL YEAR LOOK AHEAD

Harbor LC

- Educational Specifications in progress
- School Tours in progress
- Schematic Design – Spring/Summer

Miller Junior HS

- Property Procurement
- Final Phase I report to OPSI in February for Phase II Approval.
Target April 2025 Phase II Kickoff

New Aberdeen ES (North)

- Property Procurement
- Final Phase I report to OPSI in February for Phase II Approval.
Target April 2025 Phase II Kickoff

New Aberdeen ES (South)

- Property Procurement
- Final Phase I report to OPSI in February for Phase II Approval.
Target April 2025 Phase II Kickoff

AJ WEST ES
HARBOR LC
MILLER JR HS
STEVENS ES

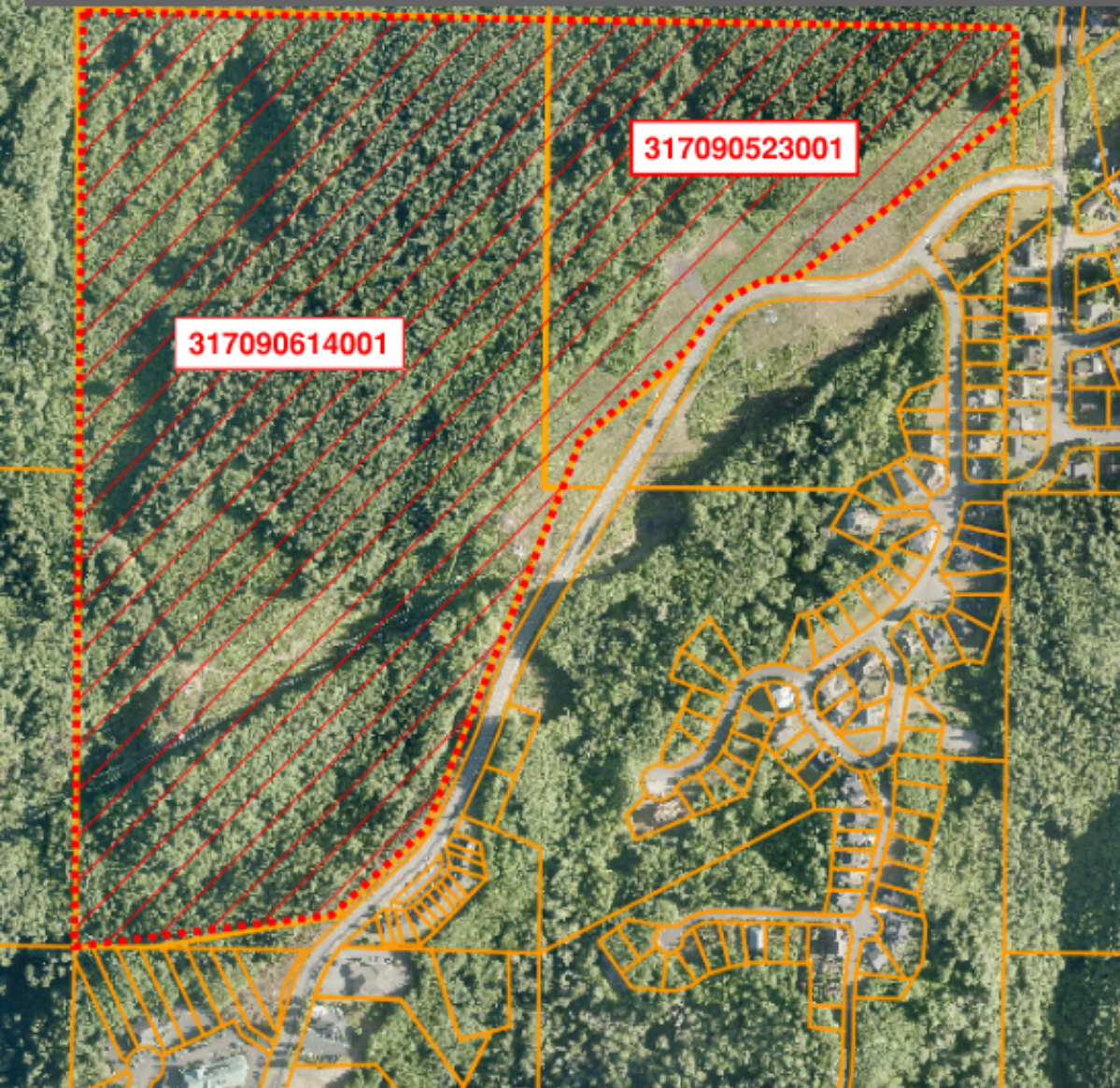


CSG

Specialists in School Buildings + CM PM Services

A program of ESD 112.

NORTH ABERDEEN SCHOOLS SITE



BASICH BLVD PROPERTIES

PARCEL 317090523001

22.75 ACRES

PARCEL 317090614001

73.14 ACRES

TOTAL ACRES: 95.89 ACRES



PROPERTY PROCUREMENT UPDATE

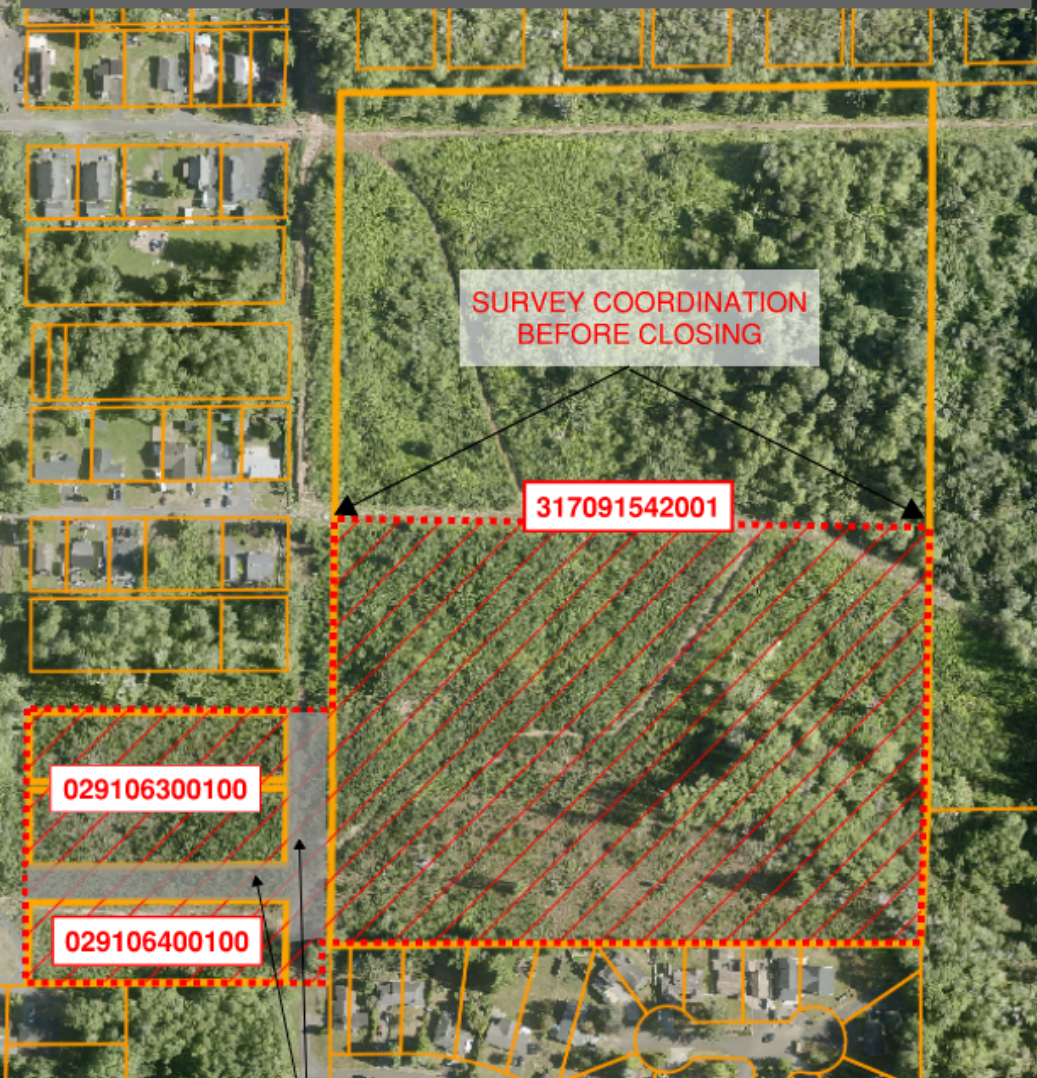
- *Purchase and Sale Agreement in Place*
- *75 Days for "Inspection Period", Late April plus 30 days at Buyer request.*



CSG

A program of ESD 112.

SOUTH ABERDEEN ELEMENTARY SCHOOL SITE



STREET VACATION
W/ CITY

LOMAX ST PROPERTIES

PARCEL 317091542001

1/2 OF 29.98 ACRES = 14.99
(EXACT ACREAGE TO BE SET BY SURVEY)

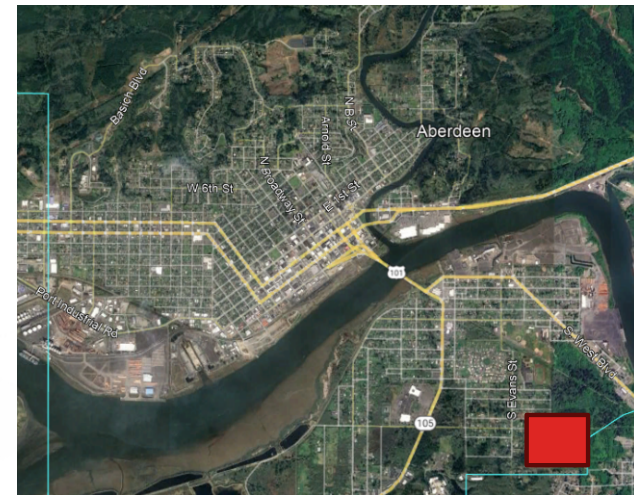
PARCEL 029106300100

2.05 ACRES

PARCEL 029106400100

1.14 ACRES

TOTAL ACRES: 18.18 ACRES



PROPERTY PROCUREMENT UPDATE

- *Purchase and Sale Agreement in Place*
- *75 Days for “Inspection Period”, Late April plus 30 days at Buyer request.*



CSG

A program of ESD 112.

OSPI SEISMIC TSUNAMI MASTER PROJECT SCHEDULE (DEPENDENT ON STATE FUNDING)

