



EPHRATA
SCHOOL DISTRICT

Facility Study Group Meeting

February 3, 2025





EPHRATA
SCHOOL DISTRICT

Introductions:

Community Representatives

Ephrata School District Representatives

Design West Architects

Turner & Townsend Heery



Team Charge / Purpose



EPHRATA
SCHOOL DISTRICT

- To develop an accurate understanding of where the school district is today and identify/reimagine the educational facility needs of tomorrow.
- To evaluate the current condition, functionality and future needs of school buildings/infrastructure.
- To develop and present a bond package recommendation to the Ephrata School Board that supports long-term student success, accommodates future growth and aligns with the district's educational goals and financial resources.



PLANNING SCHEDULE

- October 2024: Review data and discuss desires
- February 2025: Develop list of desires
- March 2025: Develop the draft bond request
- May 2025 : Bond package and dollars fully developed
- September 2025: Present to the Ephrata School Board
- February 2026: Potential Bond Election

Meeting Agenda



EPHRATA
SCHOOL DISTRICT

- Recap previous discussions and underlying assumptions
- Review possible school facilities project scenarios
- Consider various packages of projects
- Questions?

Study & Survey



EPHRATA
SCHOOL DISTRICT

Ephrata School District – Building Area & Condition

- Columbia Ridge Elementary: 99.18% rating, 56,162SF, grades K-4.
- Grant Elementary: 55.76% rating, 31,366SF + 5 modulares, grades K-4.
- Parkway Intermediate: 55.40% rating, 24,121SF + 4 modulares, grades 5-6.
- Ephrata Middle School: 99.06% & 99.73% rating, 72,768SF, grades 7-8
- Ephrata High School: 73.54% rating, 79,597SF + 1 modular, grades 9-12.
- Beezley Springs Building: 67.01% rating, 23,732SF, grades 9-12.
- Performing Arts Center: rating, 64.02% rating, 32,240SF, grades 9-12

Committee Feedback



EPHRATA
SCHOOL DISTRICT

1. Preference for new construction over remodeling
2. Portable Classrooms are not a long term solution
3. Grade re-configurations is possibly part of the solution
4. Student Safety is a high priority
5. Traffic management/control is a high priority
6. Plan for enrollment growth

Possible Conclusions



EPHRATA
SCHOOL DISTRICT

1. Replace existing Parkway & Grant buildings (location TBD)
2. Replace portables with permanent classrooms
3. Reconfigure grade levels based on preferred scheme
4. EHS & new buildings to be single controlled campuses
5. EHS & new buildings to accommodate current traffic
6. Provide expansion space for projected enrollments

Guiding Principals



EPHRATA
SCHOOL DISTRICT

1. Preferred grade combinations?
6th – 8th Grade Middle School?
Two or Three Elementary Schools?
K-5, K-6, PK&K-2 + 3-6, other?
2. Neighborhood schools or combined campuses?
3. Maximum student count in a school?
4. Community sentiment regarding historical buildings?
5. Community priority for different school projects?

Discussion



EPHRATA
SCHOOL DISTRICT

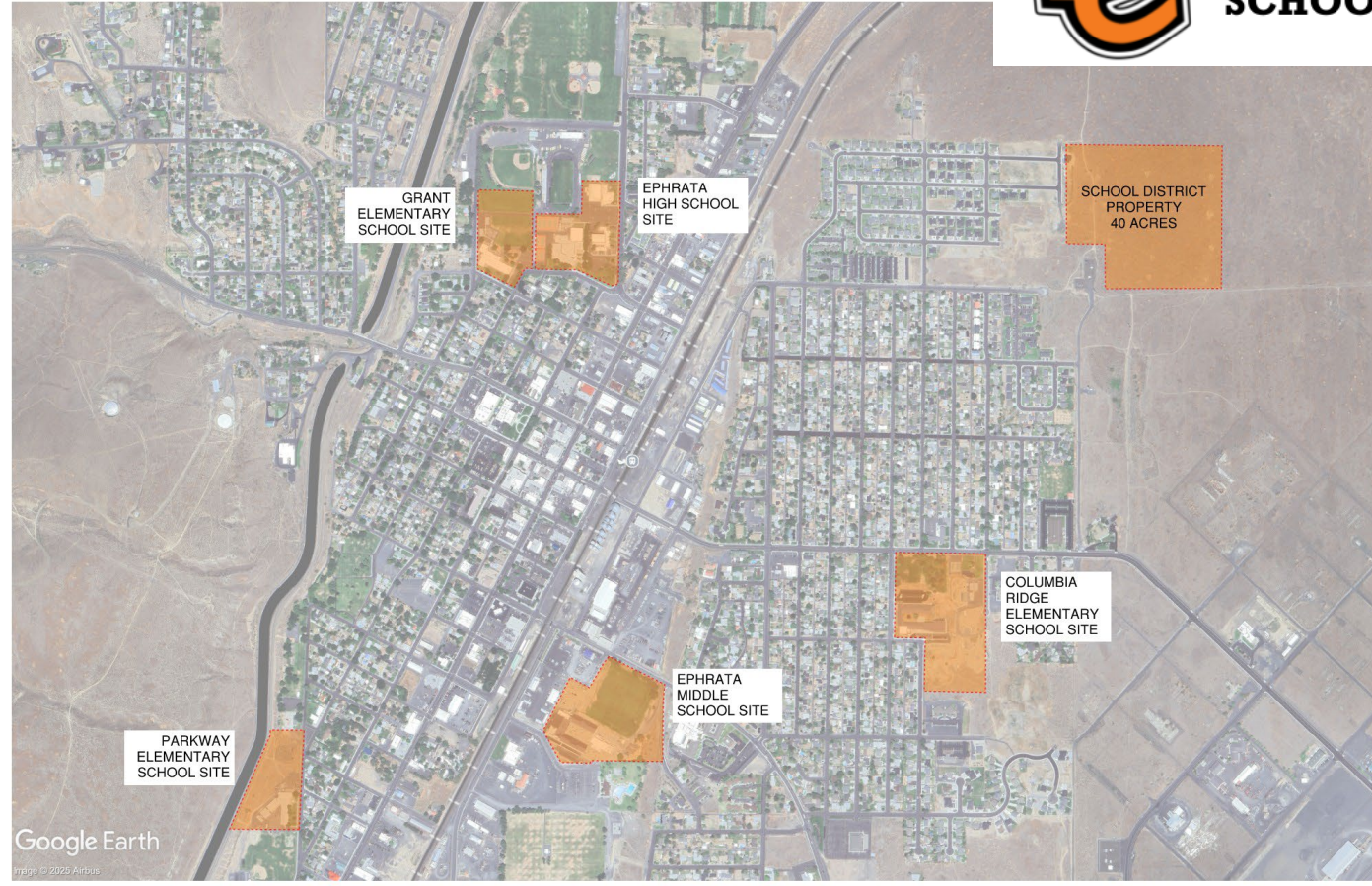
Questions Facility Study Group Considerations:

- Preferred Grade Configuration?
- Neighborhood Schools or Combined Campuses?
- Preference for maximum school size?

Ephrata SD Context



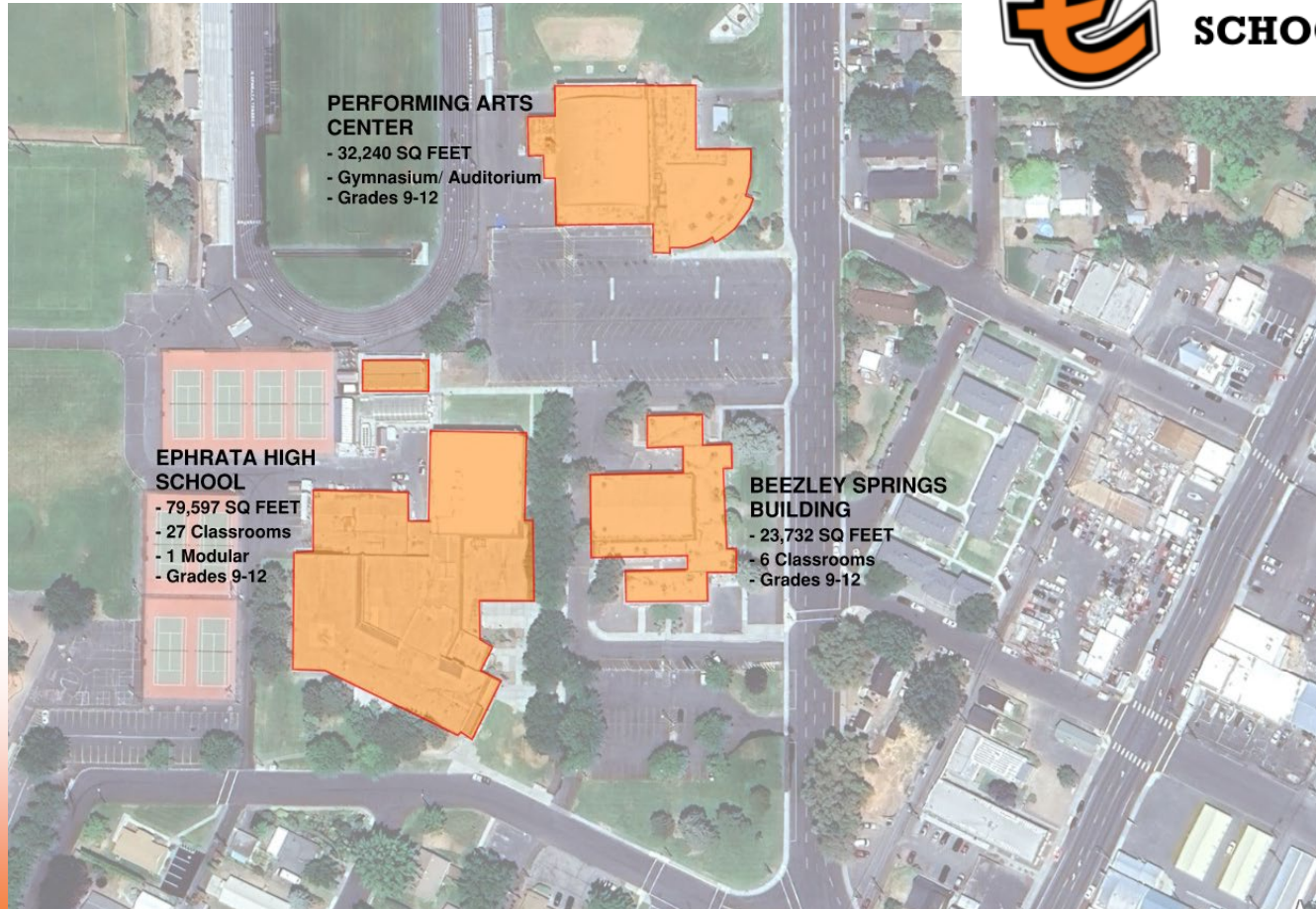
EPHRATA
SCHOOL DISTRICT



Ephrata SD Context



EPHRATA
SCHOOL DISTRICT

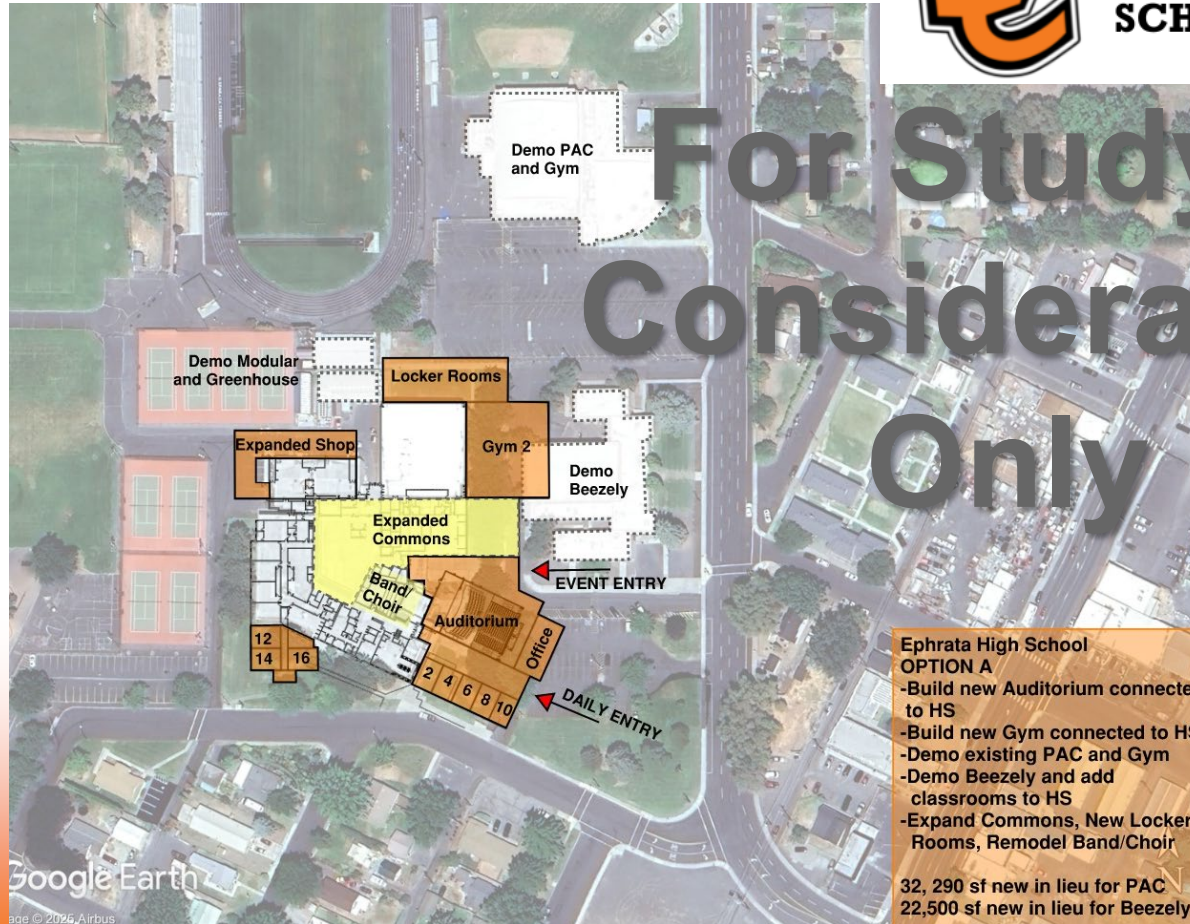


Ephrata HS Concepts



EPHRATA
SCHOOL DISTRICT

**For Study &
Consideration
Only**



**Ephrata High School
OPTION A**

- Build new Auditorium connected to HS
- Build new Gym connected to HS
- Demo existing PAC and Gym
- Demo Beezely and add classrooms to HS
- Expand Commons, New Locker Rooms, Remodel Band/Choir

32, 290 sf new in lieu for PAC
22,500 sf new in lieu for Beezely

Ephrata HS Concepts



EPHRATA
SCHOOL DISTRICT

For Study & Consideration Only



**Ephrata High School
OPTION B**

- Build new Auditorium connected to HS
- Build new Gym connected to HS
- Demo existing PAC and Gym
- Demo Beezely and add classrooms to HS
- Expand Commons, New Locker Rooms, Remodel Band/Choir

32, 290 sf new in lieu for PAC
22,500 sf new in lieu for Beezely



Ephrata HS Concepts



EPHRATA
SCHOOL DISTRICT

For Study &
Consideration
Only



Ephrata High School
OPTION C
-Build new Auditorium connected
to HS
-Build new Gym connected to HS
-Demo existing PAC and Gym
-Demo Beezely and add
classrooms to HS
-Expand Commons, Remodel
Locker Rooms,
New Band/Choir

32, 290 sf new in lieu for PAC
22,500 sf new in lieu for Beezely



Ephrata HS Concepts



EPHRATA
SCHOOL DISTRICT

For Study & Consideration Only



**Ephrata High School
OPTION D**

- Build new Auditorium connected to HS and Beezely
- Build new Gym connected to HS
- Demo existing PAC and Gym
- Selective Demo Beezely and add classrooms to HS
- Preserve Beezely class wings
- Expand Commons, New Locker Rooms, Remodel Band/Choir

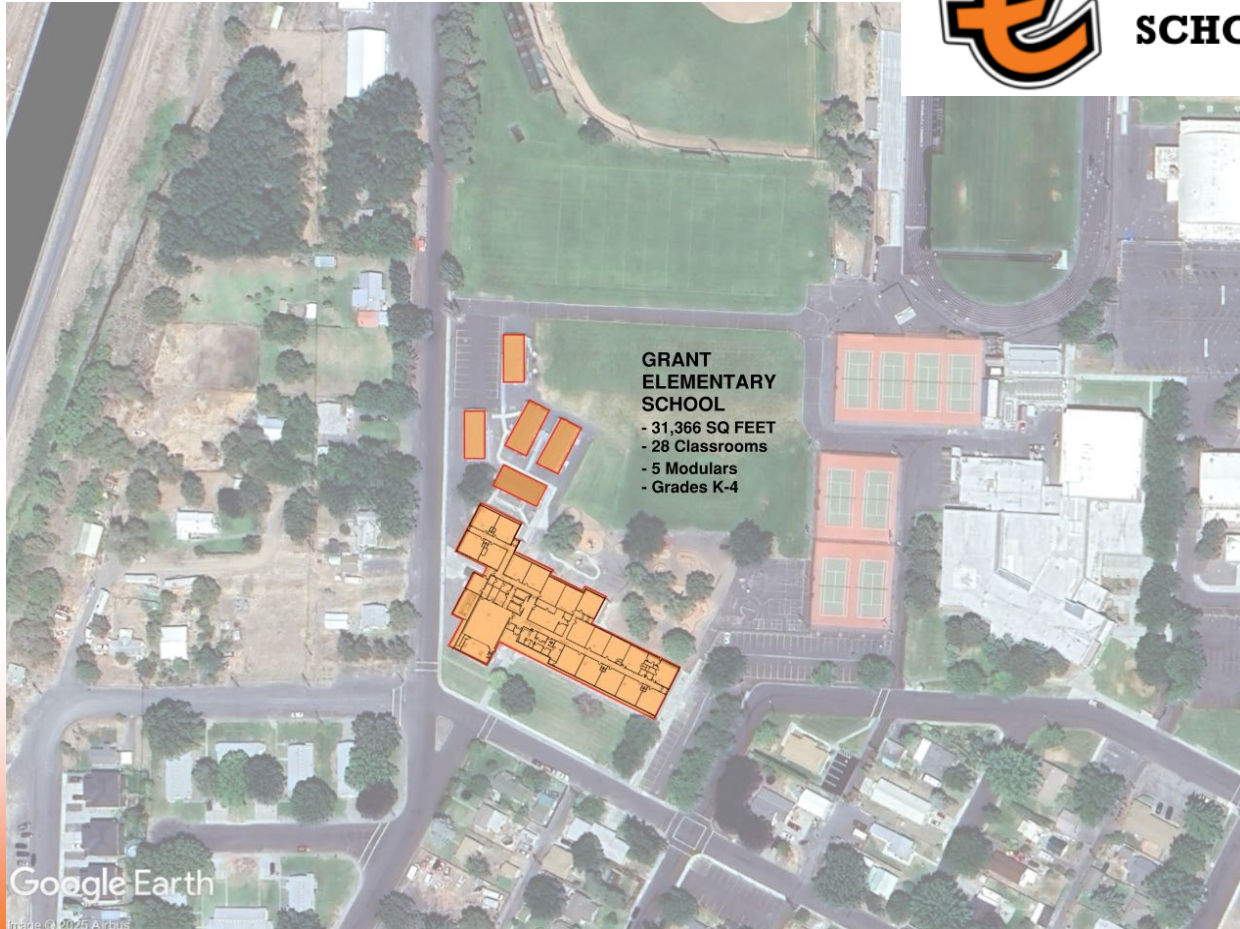
32, 290 sf new in lieu for PAC
10,000 sf new in lieu for Beezely



Ephrata SD Context



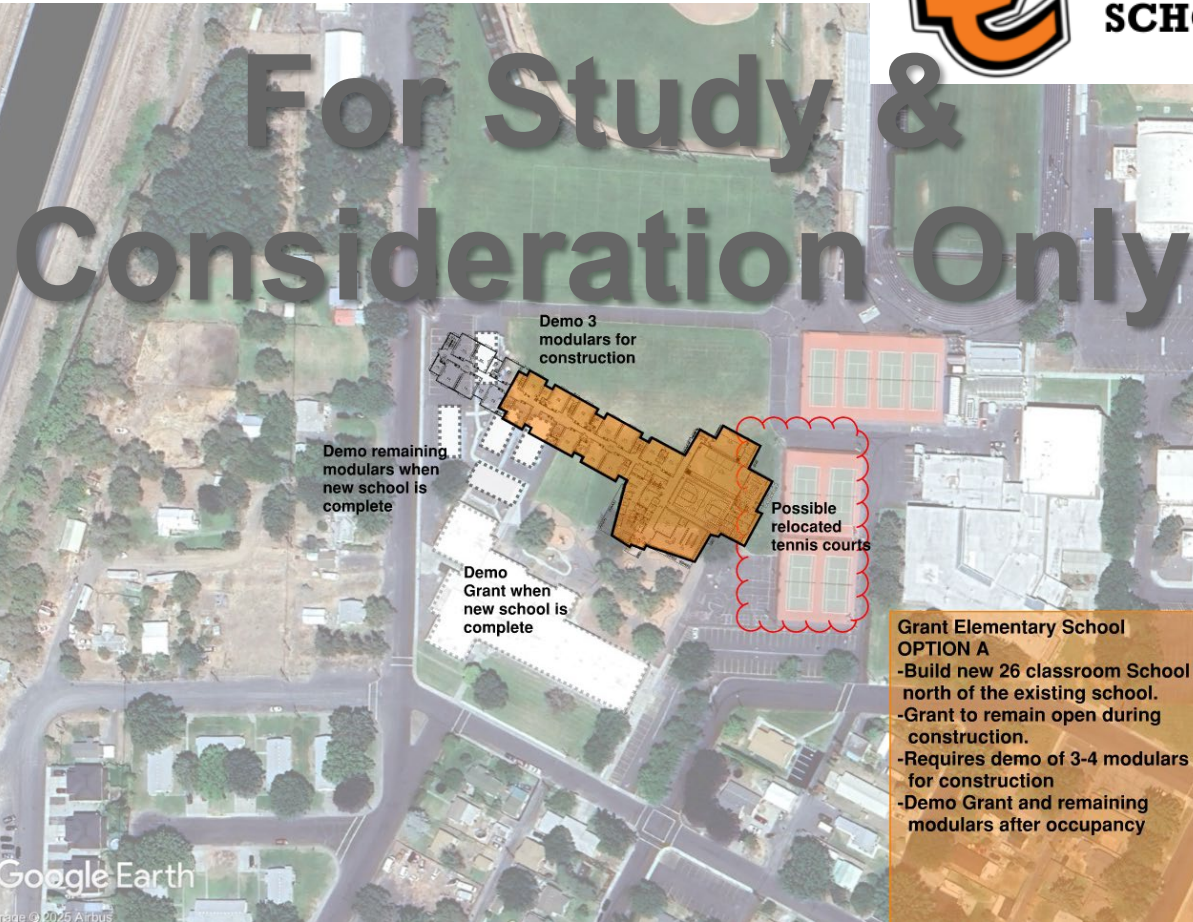
EPHRATA
SCHOOL DISTRICT



Ephrata Grant Concepts



EPHRATA
SCHOOL DISTRICT

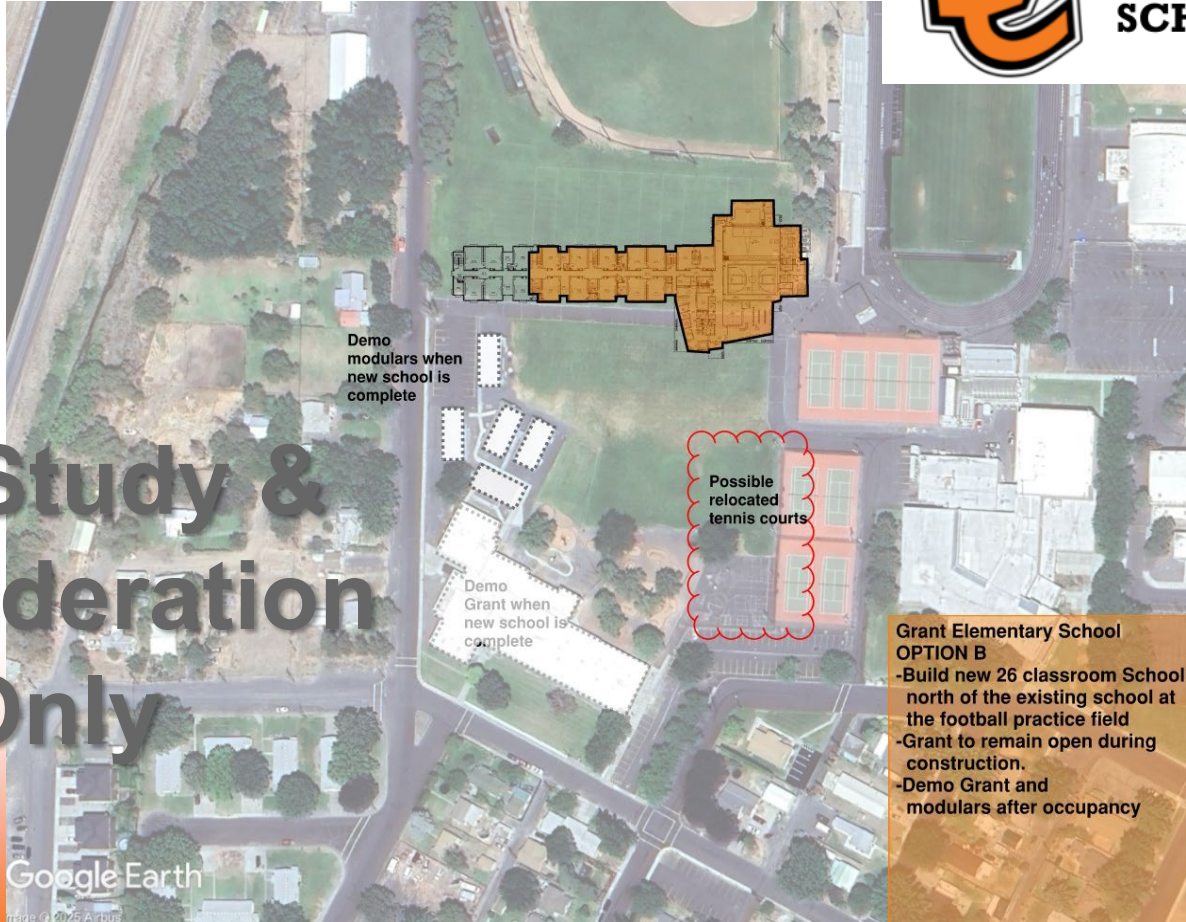


Ephrata Grant Concepts



EPHRATA
SCHOOL DISTRICT

**For Study &
Consideration
Only**



Grant Elementary School OPTION B

- Build new 26 classroom School north of the existing school at the football practice field
- Grant to remain open during construction.
- Demo Grant and modulars after occupancy

Google Earth

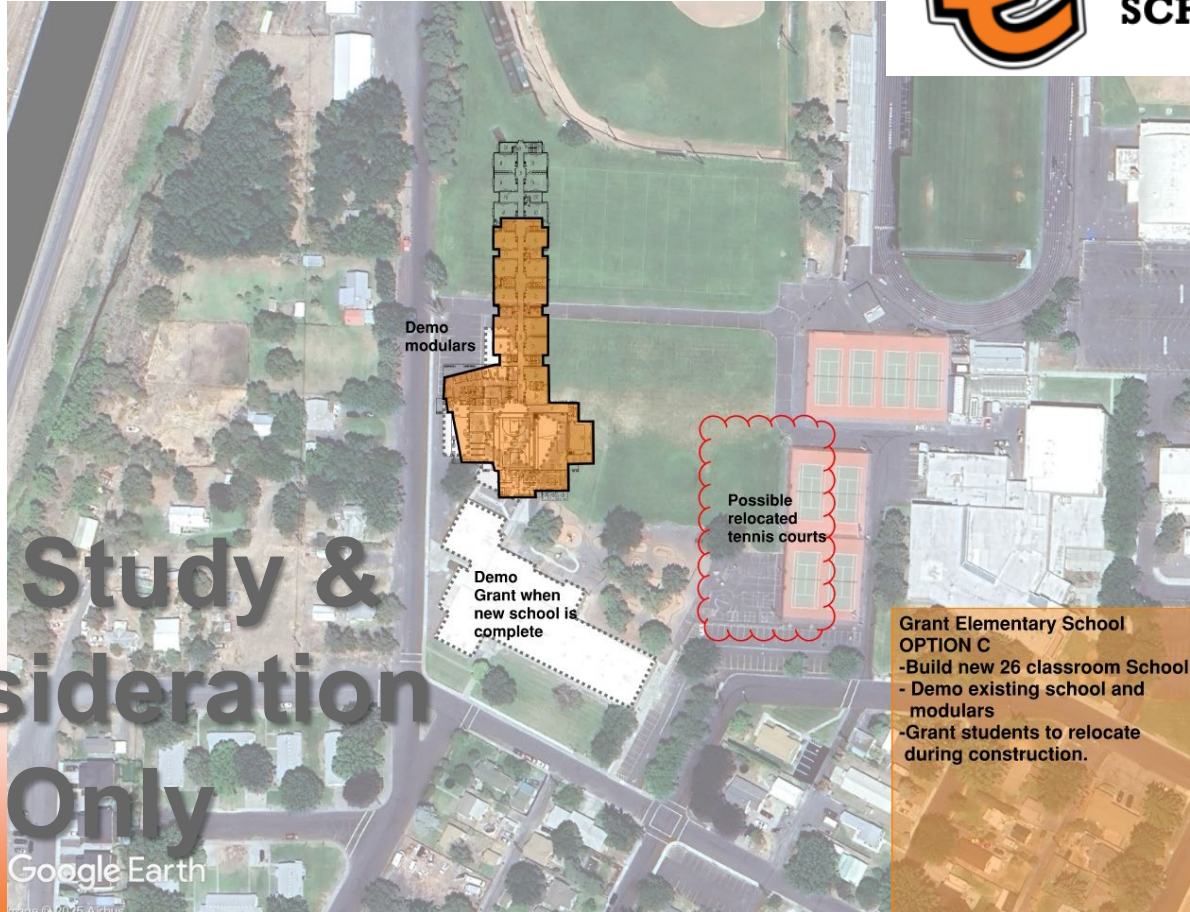
Image © 2025 Airbus

Ephrata Grant Concepts



EPHRATA
SCHOOL DISTRICT

**For Study &
Consideration
Only**



Ephrata SD Context



EPHRATA
SCHOOL DISTRICT



Ephrata New ES Concepts



EPHRATA
SCHOOL DISTRICT



**CRE Site Elementary School
OPTION A**
-Build new 26 classroom School
north of the existing school.

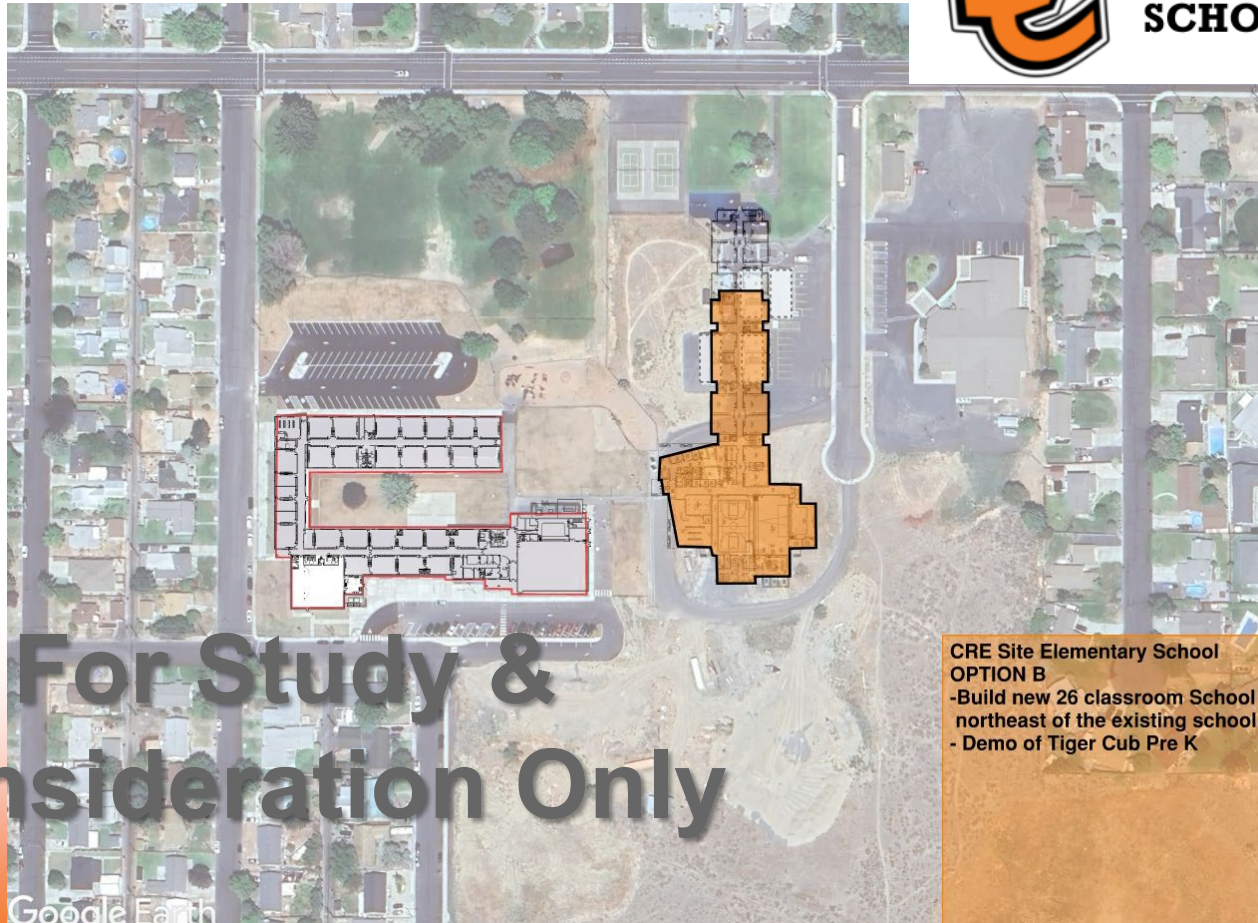
Google Earth

 **DESIGN
WEST**

Ephrata New ES Concepts



EPHRATA
SCHOOL DISTRICT



**For Study &
Consideration Only**

CRE Site Elementary School
OPTION B
- Build new 26 classroom School
northeast of the existing school.
- Demo of Tiger Cub Pre K

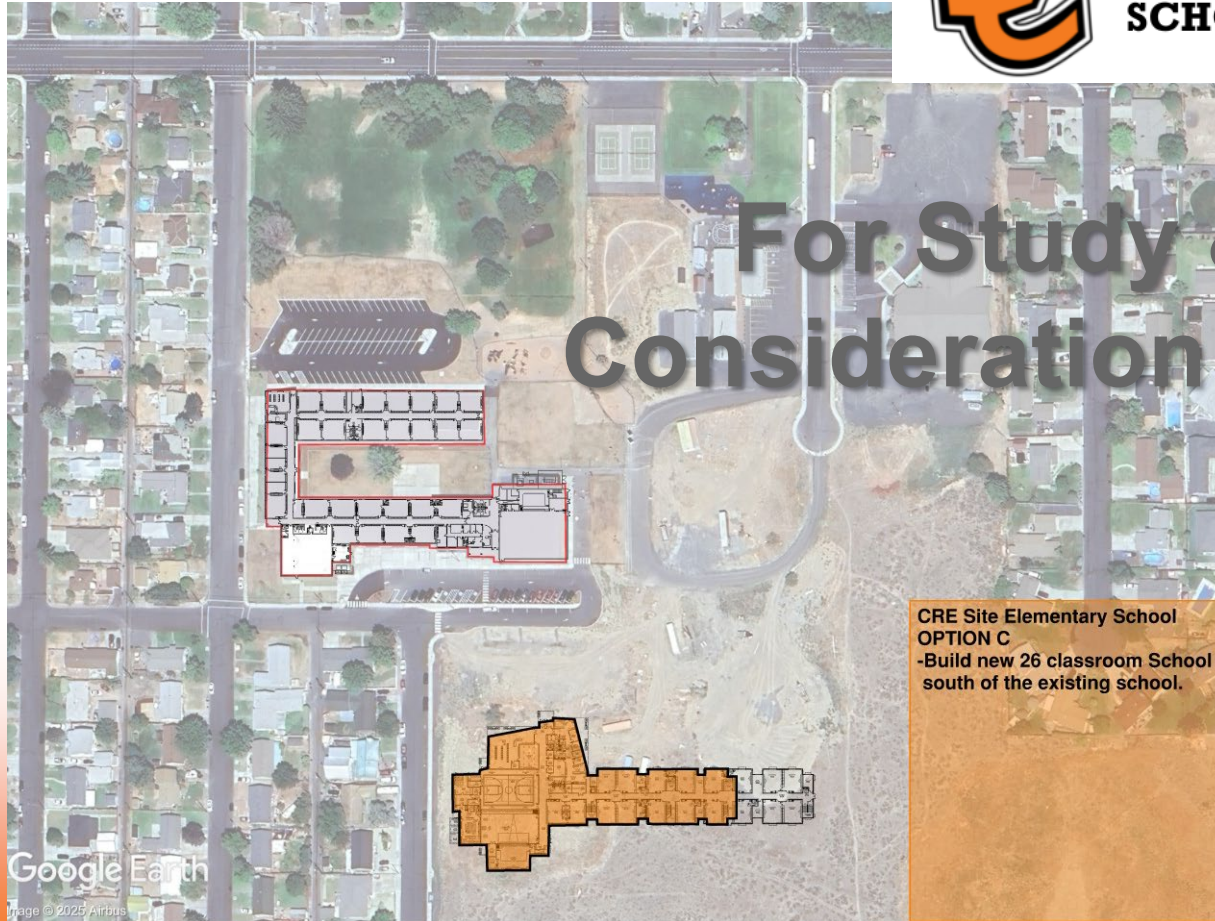


Ephrata New ES Concepts



EPHRATA
SCHOOL DISTRICT

**For Study &
Consideration Only**



**CRE Site Elementary School
OPTION C**
-Build new 26 classroom School
south of the existing school.

Google Earth

Image © 2025 Airbyte

**DESIGN
WEST**

Ephrata SD Context



EPHRATA
SCHOOL DISTRICT

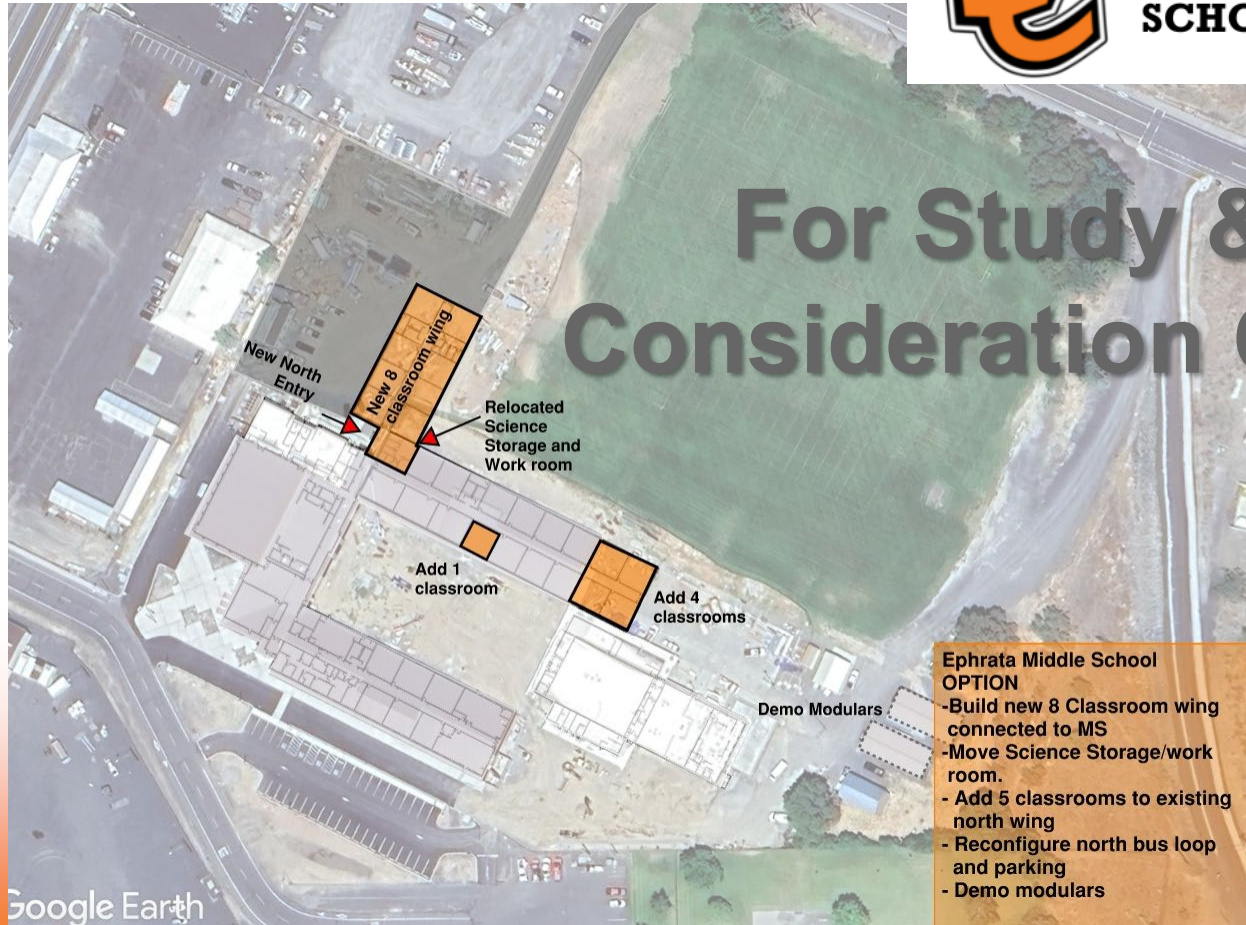


Ephrata MS Concepts



EPHRATA
SCHOOL DISTRICT

**For Study &
Consideration Only**



**Ephrata Middle School
OPTION**

- Build new 8 Classroom wing connected to MS
- Move Science Storage/work room.
- Add 5 classrooms to existing north wing
- Reconfigure north bus loop and parking
- Demo modulares



Ephrata SD Context



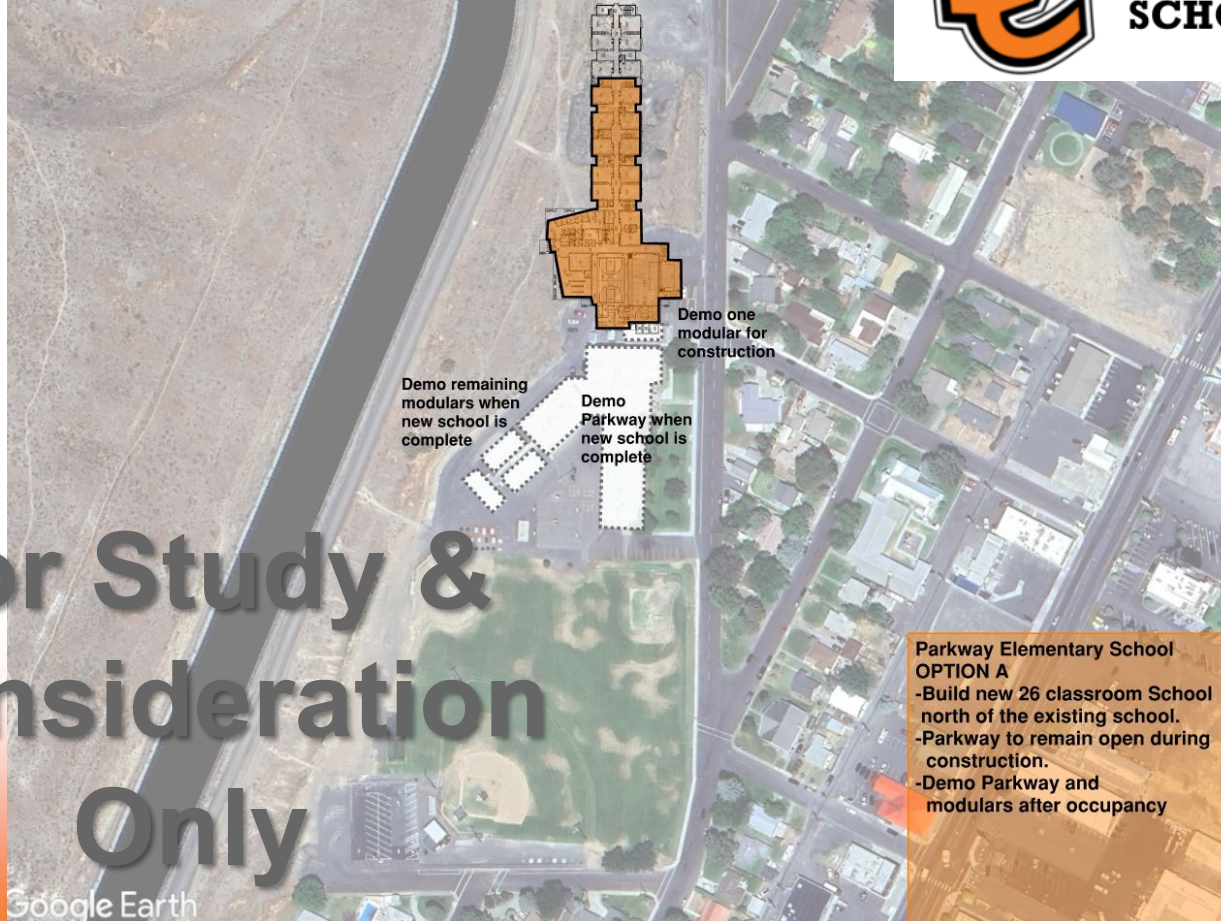
EPHRATA
SCHOOL DISTRICT



Ephrata Parkway Concepts



EPHRATA
SCHOOL DISTRICT



**For Study &
Consideration
Only**

Parkway Elementary School OPTION A

- Build new 26 classroom School north of the existing school.
- Parkway to remain open during construction.
- Demo Parkway and modulares after occupancy

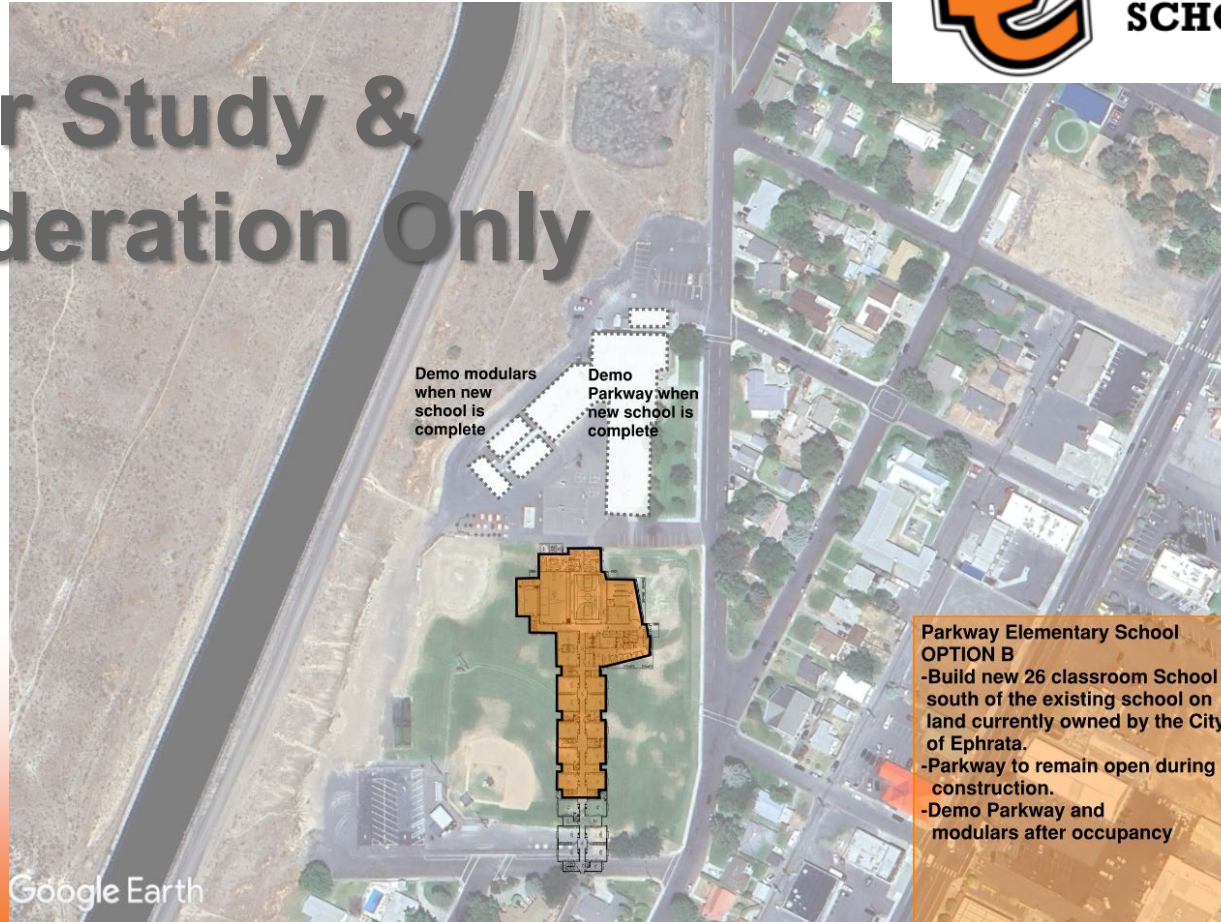


Ephrata Parkway Concepts



EPHRATA
SCHOOL DISTRICT

For Study & Consideration Only



Possible Conclusions



EPHRATA
SCHOOL DISTRICT

1. Replace existing Parkway & Grant buildings (location TBD)
2. Replace portables with permanent classrooms
3. Reconfigure grade levels based on preferred scheme
4. EHS & new buildings to be single controlled campuses
5. EHS & new buildings to accommodate current traffic
6. Provide expansion space for projected enrollments

Guiding Principals



EPHRATA
SCHOOL DISTRICT

1. Preferred grade combinations?
6th – 8th Grade Middle School?
Two or Three Elementary Schools?
K-5, K-6, PK&K-2 + 3-6, other?
2. Neighborhood schools or combined campuses?
3. Maximum student count in a school?
4. Community sentiment regarding historical buildings?
5. Community priority for different school projects?

Discussion



EPHRATA
SCHOOL DISTRICT

Questions Facility Study Group Considerations:

- Priority of which buildings to improve first?
- Preference for project locations?
- Preference for grade arrangements?
- Other input related to the school facilities options?

Discussion



EPHRATA
SCHOOL DISTRICT

- Feedback – Group Thoughts Form
- Questions?
- Next Steps & What to Expect