

December 30, 2024

Will Wenzloff  
 Hillsboro School District  
 4901 SE Witch Hazel Road  
 Hillsboro, Oregon 97123

Via e-mail: wenzlofw@hsd.or.k12.us

Regarding: Drinking Water Sampling Report  
 Witch Hazel Facilities and Support Services  
 4901 SE Witch Hazel Road  
 Hillsboro, OR 97123  
 PBS Project 24013061 / 0004

Dear Mr. Wenzloff:

On December 14, 2024, PBS Engineering and Environmental Inc. (PBS) performed drinking water sampling at the Hillsboro School District Witch Hazel Facilities and Support Services building in Hillsboro, Oregon. The testing was requested by Hillsboro School District as part of their efforts to ensure that concentrations of lead in drinking water at the building remain below the Oregon Department of Education (ODE) action level of 15 parts per billion (ppb).

Fifteen samples were delivered under chain of custody to Apex Laboratories in Tigard, Oregon for lead analysis. All samples analyzed below 15 ppb of lead. The following table lists the results of the analysis.

Fixture Number	Sample Number	Location / Room No.	Results (ppb)
001	22390001-001SF24A	Construction side, break area sink	ND
002	22390001-002BF24A	Construction side, restroom sink	0.430
003	22390001-003BF24A	Construction side, west cubicles restroom sink	ND
004	22390001-004BF24A	Receiving, restroom sink	0.376
005	22390001-005SF24A	Resource warehouse, utility sink	ND
006	22390001-006IM24A	Custodial storage at west wall, ice machine	0.616
007	22390001-007SF24A	Custodial storage at west wall, sink faucet	0.565
008	22390001-008BF24A	Facilities records storage, mens restroom – left sink	0.885
009	22390001-009BF24A	Facilities records storage, mens restroom – right sink	0.623
010	22390001-010BF24A	Facilities records storage, right side restroom, sink faucet	0.367
011	22390001-011BF24A	Facilities, front office restroom sink	ND
012	22390001-012SF24A	Facilities, break room sink faucet	0.407

<b>Fixture Number</b>	<b>Sample Number</b>	<b>Location / Room No.</b>	<b>Results (ppb)</b>
013	22390001-013SF24A	Facilities, break room sink sprayer	1.53
014	22390001-014SF24A	Facilities, break room coffee maker hot water tap	0.493
015	22390001-015WC24A	Facilities, break room water cooler	ND

*ND = no lead detected*

Please refer to the attached sample location drawings and laboratory analytical report for additional details. The laboratory analytical results are reported in micrograms per liter ( $\mu\text{g/L}$ ), a unit of measure that is equivalent to ppb.

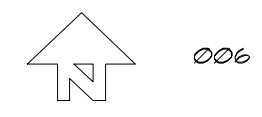
Sampling methodology and the interpretation of laboratory results were based on the Environmental Protection Agency guidance document titled *3Ts for Reducing Lead in Drinking Water in Schools*. Following this guideline, PBS collected first draw samples from each test location. First draw samples consist of the first 250 milliliters (mL) of water drawn from a fixture after the water has been sitting stagnant for at least 8 hours. The 3Ts' sampling protocol specifying 250-mL samples is designed to maximize the likelihood that the highest concentrations of lead in water used for consumption are identified.

Please feel free to contact me at 503.515.4726 or voeller@pbsusa.com with any questions or comments.

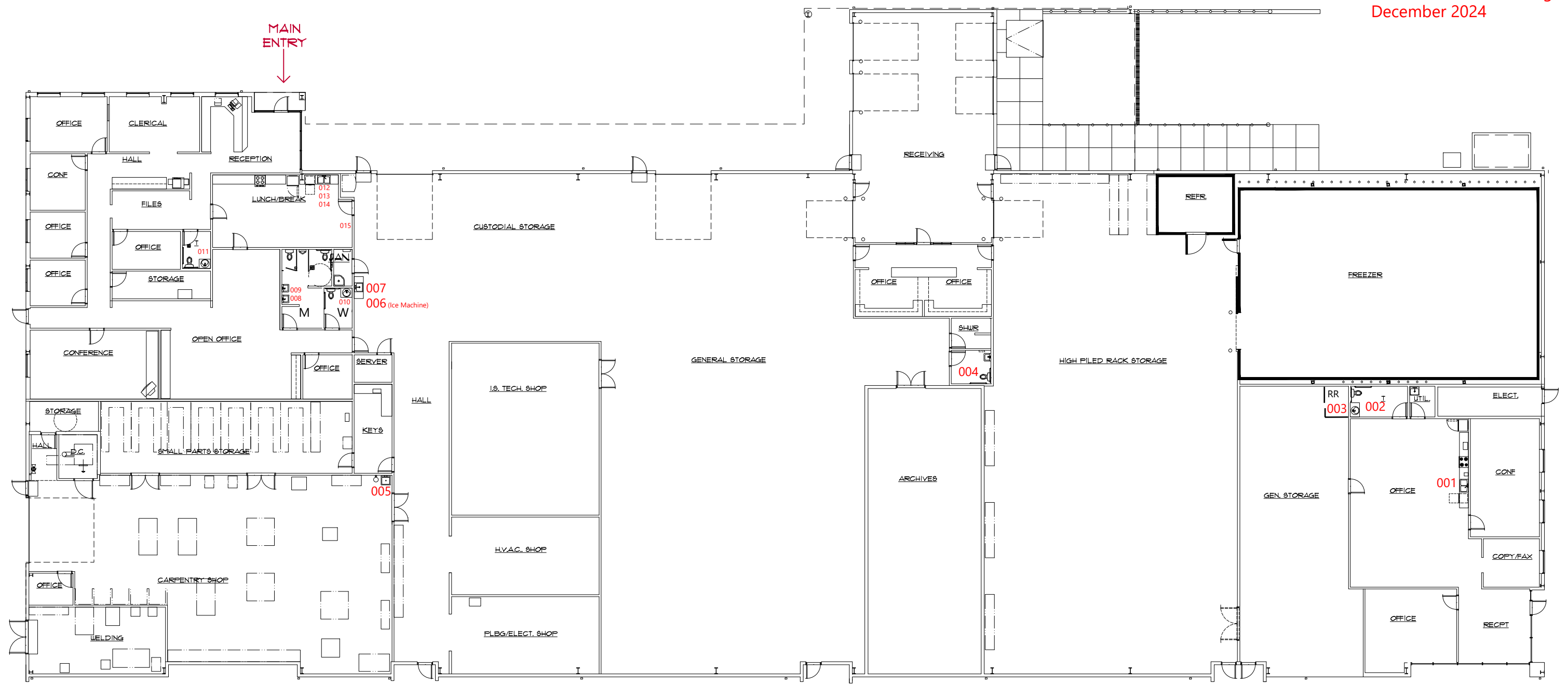
Sincerely,

Dale Voeller, CHMM, CSP  
Senior Project Manager

Attachments: Sample Location Drawings  
Laboratory Analytical Report



Fixture Location Drawing  
December 2024





ANALYTICAL REPORT

**Apex Laboratories, LLC**  
6700 S.W. Sandburg Street  
Tigard, OR 97223  
503-718-2323  
ORELAP ID: OR100062

Thursday, December 26, 2024

Dale Voeller  
PBS Engineering and Environmental  
4412 S Corbett Ave  
Portland, OR 97239

RE: A4L1453 - Hillsboro School District - Witch Hazel Facilities/24013061

Thank you for using Apex Laboratories. We greatly appreciate your business and strive to provide the highest quality services to the environmental industry.

Enclosed are the results of analyses for work order A4L1453, which was received by the laboratory on 12/17/2024 at 1:37:00PM.

If you have any questions concerning this report or the services we offer, please feel free to contact me by email at: [jwoodcock@apex-labs.com](mailto:jwoodcock@apex-labs.com), or by phone at 503-718-2323.

Please note: All samples will be disposed of within 30 days of sample receipt, unless prior arrangements have been made.

Cooler Receipt Information		
<u>Acceptable Receipt Temperature is less than, or equal to, 6 degC (not frozen), or received on ice the same day as sampling.</u>		
(See Cooler Receipt Form for details)		
Default Cooler	17.6	degC

This Final Report is the official version of the data results for this sample submission, unless superseded by a subsequent, labeled amended report.

All other deliverables derived from this data, including Electronic Data Deliverables (EDDs), CLP-like forms, client requested summary sheets, and all other products are considered secondary to this report.



Apex Laboratories

*The results in this report apply to the samples analyzed in accordance with the chain of custody document(s) and updated by any subsequent written communications. This analytical report must be reproduced in its entirety.*

Jason Woodcock, Project Manager



**ANALYTICAL REPORT**

**Apex Laboratories, LLC**

6700 S.W. Sandburg Street  
Tigard, OR 97223  
503-718-2323  
ORELAP ID: OR100062

<b><u>PBS Engineering and Environmental</u></b> 4412 S Corbett Ave Portland, OR 97239	Project: <b><u>Hillsboro School District</u></b> Project Number: <b>Witch Hazel Facilities/2401</b> Project Manager: <b>Dale Voeller</b>	<b>Report ID:</b> <b>A4L1453 - 12 26 24 1201</b>
---	--	---

**ANALYTICAL REPORT FOR SAMPLES**

**SAMPLE INFORMATION**

Client Sample ID	Laboratory ID	Matrix	Date Sampled	Date Received
22390001-001SF24A	A4L1453-01	Drinking Water	12/14/24 00:00	12/17/24 13:37
22390001-002BF24A	A4L1453-02	Drinking Water	12/14/24 00:00	12/17/24 13:37
22390001-003BF24A	A4L1453-03	Drinking Water	12/14/24 00:00	12/17/24 13:37
22390001-004BF24A	A4L1453-04	Drinking Water	12/14/24 00:00	12/17/24 13:37
22390001-005SF24A	A4L1453-05	Drinking Water	12/14/24 00:00	12/17/24 13:37
22390001-006IM24A	A4L1453-06	Drinking Water	12/14/24 00:00	12/17/24 13:37
22390001-007SF24A	A4L1453-07	Drinking Water	12/14/24 00:00	12/17/24 13:37
22390001-008BF24A	A4L1453-08	Drinking Water	12/14/24 00:00	12/17/24 13:37
22390001-009BF24A	A4L1453-09	Drinking Water	12/14/24 00:00	12/17/24 13:37
22390001-010BF24A	A4L1453-10	Drinking Water	12/14/24 00:00	12/17/24 13:37
22390001-011BF24A	A4L1453-11	Drinking Water	12/14/24 00:00	12/17/24 13:37
22390001-012SF24A	A4L1453-12	Drinking Water	12/14/24 00:00	12/17/24 13:37
22390001-013SF24A	A4L1453-13	Drinking Water	12/14/24 00:00	12/17/24 13:37
22390001-014SF24A	A4L1453-14	Drinking Water	12/14/24 00:00	12/17/24 13:37
22390001-015WC24A	A4L1453-15	Drinking Water	12/14/24 00:00	12/17/24 13:37

Apex Laboratories

*The results in this report apply to the samples analyzed in accordance with the chain of custody document(s) and updated by any subsequent written communications. This analytical report must be reproduced in its entirety.*

Jason Woodcock, Project Manager



ANALYTICAL REPORT

**Apex Laboratories, LLC**

6700 S.W. Sandburg Street  
Tigard, OR 97223  
503-718-2323  
ORELAP ID: OR100062

<b>PBS Engineering and Environmental</b> 4412 S Corbett Ave Portland, OR 97239	Project: <b>Hillsboro School District</b> Project Number: <b>Witch Hazel Facilities/2401</b> Project Manager: <b>Dale Voeller</b>	<b>Report ID:</b> <b>A4L1453 - 12 26 24 1201</b>
--	---	---

**ANALYTICAL SAMPLE RESULTS**

**Total Metals in Drinking Water by EPA 200.8 (ICPMS)**

Analyte	Sample Result	Detection Limit	Reporting Limit	Units	Dilution	Date Analyzed	Method Ref.	Notes
<b>22390001-001SF24A (A4L1453-01)</b>				<b>Matrix: Drinking Water</b>				
<u>Batch: 24L0758</u>								
Lead	ND	---	0.200	ug/L	1	12/19/24 16:55	EPA 200.8	
<b>22390001-002BF24A (A4L1453-02)</b>				<b>Matrix: Drinking Water</b>				
<u>Batch: 24L0758</u>								
Lead	<b>0.430</b>	---	0.200	ug/L	1	12/19/24 16:56	EPA 200.8	
<b>22390001-003BF24A (A4L1453-03)</b>				<b>Matrix: Drinking Water</b>				
<u>Batch: 24L0758</u>								
Lead	ND	---	0.200	ug/L	1	12/19/24 17:02	EPA 200.8	
<b>22390001-004BF24A (A4L1453-04)</b>				<b>Matrix: Drinking Water</b>				
<u>Batch: 24L0758</u>								
Lead	<b>0.376</b>	---	0.200	ug/L	1	12/19/24 17:04	EPA 200.8	
<b>22390001-005SF24A (A4L1453-05)</b>				<b>Matrix: Drinking Water</b>				
<u>Batch: 24L0758</u>								
Lead	ND	---	0.200	ug/L	1	12/19/24 17:06	EPA 200.8	
<b>22390001-006IM24A (A4L1453-06)</b>				<b>Matrix: Drinking Water</b>				
<u>Batch: 24L0758</u>								
Lead	<b>0.616</b>	---	0.200	ug/L	1	12/19/24 17:08	EPA 200.8	
<b>22390001-007SF24A (A4L1453-07)</b>				<b>Matrix: Drinking Water</b>				
<u>Batch: 24L0758</u>								
Lead	<b>0.565</b>	---	0.200	ug/L	1	12/19/24 17:10	EPA 200.8	
<b>22390001-008BF24A (A4L1453-08)</b>				<b>Matrix: Drinking Water</b>				
<u>Batch: 24L0758</u>								
Lead	<b>0.885</b>	---	0.200	ug/L	1	12/19/24 17:11	EPA 200.8	
<b>22390001-009BF24A (A4L1453-09)</b>				<b>Matrix: Drinking Water</b>				
<u>Batch: 24L0758</u>								
Lead	<b>0.623</b>	---	0.200	ug/L	1	12/19/24 17:13	EPA 200.8	

Apex Laboratories

Jason Woodcock, Project Manager

*The results in this report apply to the samples analyzed in accordance with the chain of custody document(s) and updated by any subsequent written communications. This analytical report must be reproduced in its entirety.*



ANALYTICAL REPORT

**Apex Laboratories, LLC**

6700 S.W. Sandburg Street  
Tigard, OR 97223  
503-718-2323  
ORELAP ID: OR100062

<b>PBS Engineering and Environmental</b> 4412 S Corbett Ave Portland, OR 97239	Project: <b>Hillsboro School District</b> Project Number: <b>Witch Hazel Facilities/2401</b> Project Manager: <b>Dale Voeller</b>	<b>Report ID:</b> A4L1453 - 12 26 24 1201
--	---	--

**ANALYTICAL SAMPLE RESULTS**

**Total Metals in Drinking Water by EPA 200.8 (ICPMS)**

Analyte	Sample Result	Detection Limit	Reporting Limit	Units	Dilution	Date Analyzed	Method Ref.	Notes
<b>22390001-010BF24A (A4L1453-10)</b>				<b>Matrix: Drinking Water</b>				
<u>Batch: 24L0758</u>								
<b>Lead</b>	<b>0.367</b>	---	0.200	ug/L	1	12/19/24 17:15	EPA 200.8	
<b>22390001-011BF24A (A4L1453-11)</b>				<b>Matrix: Drinking Water</b>				
<u>Batch: 24L0758</u>								
<b>Lead</b>	ND	---	0.200	ug/L	1	12/19/24 17:17	EPA 200.8	
<b>22390001-012SF24A (A4L1453-12)</b>				<b>Matrix: Drinking Water</b>				
<u>Batch: 24L0758</u>								
<b>Lead</b>	<b>0.407</b>	---	0.200	ug/L	1	12/19/24 17:19	EPA 200.8	
<b>22390001-013SF24A (A4L1453-13)</b>				<b>Matrix: Drinking Water</b>				
<u>Batch: 24L0758</u>								
<b>Lead</b>	<b>1.53</b>	---	0.200	ug/L	1	12/19/24 17:25	EPA 200.8	
<b>22390001-014SF24A (A4L1453-14)</b>				<b>Matrix: Drinking Water</b>				
<u>Batch: 24L0758</u>								
<b>Lead</b>	<b>0.493</b>	---	0.200	ug/L	1	12/19/24 17:26	EPA 200.8	
<b>22390001-015WC24A (A4L1453-15)</b>				<b>Matrix: Drinking Water</b>				
<u>Batch: 24L0758</u>								
<b>Lead</b>	ND	---	0.200	ug/L	1	12/19/24 17:28	EPA 200.8	

Apex Laboratories

Jason Woodcock, Project Manager

*The results in this report apply to the samples analyzed in accordance with the chain of custody document(s) and updated by any subsequent written communications. This analytical report must be reproduced in its entirety.*



ANALYTICAL REPORT

**Apex Laboratories, LLC**

6700 S.W. Sandburg Street  
Tigard, OR 97223  
503-718-2323  
ORELAP ID: OR100062

<b>PBS Engineering and Environmental</b> 4412 S Corbett Ave Portland, OR 97239	Project: <b>Hillsboro School District</b> Project Number: <b>Witch Hazel Facilities/2401</b> Project Manager: <b>Dale Voeller</b>	<b>Report ID:</b> A4L1453 - 12 26 24 1201
--	---	--

**QUALITY CONTROL (QC) SAMPLE RESULTS**

**Total Metals in Drinking Water by EPA 200.8 (ICPMS)**

Analyte	Result	Detection Limit	Reporting Limit	Units	Dilution	Spike Amount	Source Result	% REC	% REC Limits	RPD	RPD Limit	Notes
<b>Batch 24L0758 - EPA 200.8 Direct Analysis</b>						<b>Drinking Water</b>						
<b>Blank (24L0758-BLK1)</b>		Prepared: 12/19/24 14:58 Analyzed: 12/19/24 16:40										
<u>EPA 200.8</u>												
Lead	ND	---	0.200	ug/L	1	---	---	---	---	---	---	
<b>LCS (24L0758-BS1)</b>		Prepared: 12/19/24 14:58 Analyzed: 12/19/24 16:42										
<u>EPA 200.8</u>												
Lead	14.3	---	0.201	ug/L	1	15.0	---	95	85 - 115%	---	---	

*No Client related Batch QC samples analyzed for this batch. See notes page for more information.*

Apex Laboratories

*The results in this report apply to the samples analyzed in accordance with the chain of custody document(s) and updated by any subsequent written communications. This analytical report must be reproduced in its entirety.*

Jason Woodcock, Project Manager



ANALYTICAL REPORT

Apex Laboratories, LLC

6700 S.W. Sandburg Street
Tigard, OR 97223
503-718-2323
ORELAP ID: OR100062

PBS Engineering and Environmental
4412 S Corbett Ave
Portland, OR 97239
Project: Hillsboro School District
Project Number: Witch Hazel Facilities/2401
Project Manager: Dale Voeller
Report ID: A4L1453 - 12 26 24 1201

SAMPLE PREPARATION INFORMATION

Total Metals in Drinking Water by EPA 200.8 (ICPMS)

Prep: EPA 200.8 Direct Analysis

Table with 8 columns: Lab Number, Matrix, Method, Sampled, Prepared, Sample Initial/Final, Default Initial/Final, RL Prep Factor. Contains 15 rows of data for lab numbers A4L1453-01 to A4L1453-15.

Apex Laboratories

Handwritten signature of Jason Woodcock

The results in this report apply to the samples analyzed in accordance with the chain of custody document(s) and updated by any subsequent written communications. This analytical report must be reproduced in its entirety.

Jason Woodcock, Project Manager



**ANALYTICAL REPORT**

**Apex Laboratories, LLC**

6700 S.W. Sandburg Street  
Tigard, OR 97223  
503-718-2323  
ORELAP ID: OR100062

<b><u>PBS Engineering and Environmental</u></b> 4412 S Corbett Ave Portland, OR 97239	Project: <b><u>Hillsboro School District</u></b> Project Number: <b>Witch Hazel Facilities/2401</b> Project Manager: <b>Dale Voeller</b>	<b><u>Report ID:</u></b> A4L1453 - 12 26 24 1201
---	--	---

**QUALIFIER DEFINITIONS**

**Client Sample and Quality Control (QC) Sample Qualifier Definitions:**

*There are No Qualifiers on Sample or QC Data for this report*

Apex Laboratories

*The results in this report apply to the samples analyzed in accordance with the chain of custody document(s) and updated by any subsequent written communications. This analytical report must be reproduced in its entirety.*

Jason Woodcock, Project Manager



ANALYTICAL REPORT

**Apex Laboratories, LLC**

6700 S.W. Sandburg Street  
Tigard, OR 97223  
503-718-2323  
ORELAP ID: OR100062

<b><u>PBS Engineering and Environmental</u></b> 4412 S Corbett Ave Portland, OR 97239	Project: <b><u>Hillsboro School District</u></b> Project Number: <b>Witch Hazel Facilities/2401</b> Project Manager: <b>Dale Voeller</b>	<b>Report ID:</b> <b>A4L1453 - 12 26 24 1201</b>
---	--	---

**REPORTING NOTES AND CONVENTIONS:**

**Abbreviations:**

- DET Analyte DETECTED at or above the detection or reporting limit.
- ND Analyte NOT DETECTED at or above the detection or reporting limit.
- NR Result Not Reported.
- RPD Relative Percent Difference. RPDs for Matrix Spikes and Matrix Spike Duplicates are based on concentration, not recovery.

**Detection Limits: Limit of Detection (LOD)**

Limits of Detection (LODs) are normally set at a level of one half the validated Limit of Quantitation (LOQ).  
If no value is listed ('----'), then the data has not been evaluated below the Reporting Limit.

**Reporting Limits: Limit of Quantitation (LOQ)**

Validated Limits of Quantitation (LOQs) are reported as the Reporting Limits for all analyses where the LOQ, MRL, PQL or CRL are requested. The LOQ represents a level at or above the low point of the calibration curve, that has been validated according to Apex Laboratories' comprehensive LOQ policies and procedures.

**Reporting Conventions:**

- Basis: Results for soil samples are generally reported on a 100% dry weight basis.  
The Result Basis is listed following the units as " dry", " wet", or " " (blank) designation.
  - " dry" Sample results and Reporting Limits are reported on a dry weight basis. (i.e. "ug/kg dry")  
See Percent Solids section for details of dry weight analysis.
  - " wet" Sample results and Reporting Limits for this analysis are normally dry weight corrected, but have not been modified in this case.
  - " " Results without 'wet' or 'dry' designation are not normally dry weight corrected. These results are considered 'As Received'.

**QC Source:**

In cases where there is insufficient sample provided for Sample Duplicates and/or Matrix Spikes, a Lab Control Sample Duplicate (LCS Dup) may be analyzed to demonstrate accuracy and precision of the extraction batch.

Non-Client Batch QC Samples (Duplicates and Matrix Spike/Duplicates) are not included in this report. Please request a Full QC report if this data is required.

**Miscellaneous Notes:**

- " --- " QC results are not applicable. For example, % Recoveries for Blanks and Duplicates, % RPD for Blanks, Blank Spikes and Matrix Spikes, etc.
- " \*\*\* " Used to indicate a possible discrepancy with the Sample and Sample Duplicate results when the %RPD is not available. In this case, either the Sample or the Sample Duplicate has a reportable result for this analyte, while the other is Non Detect (ND).

**Blanks:**

Standard practice is to evaluate the results from Blank QC Samples down to a level equal to one half of the Reporting Limit (RL).  
 Blank results for gravimetric analyses are evaluated to the Reporting Level, not to half of the Reporting Level.  
 -For Blank hits falling between 1/2 the RL and the RL (J flagged hits), the associated sample and QC data will receive a 'B-02' qualifier.  
 -For Blank hits above the RL, the associated sample and QC data will receive a 'B' qualifier, per Apex Laboratories' Blank Policy.

Apex Laboratories

*The results in this report apply to the samples analyzed in accordance with the chain of custody document(s) and updated by any subsequent written communications. This analytical report must be reproduced in its entirety.*



**ANALYTICAL REPORT**

**Apex Laboratories, LLC**

6700 S.W. Sandburg Street  
Tigard, OR 97223  
503-718-2323  
ORELAP ID: OR100062

<b><u>PBS Engineering and Environmental</u></b> 4412 S Corbett Ave Portland, OR 97239	Project: <b><u>Hillsboro School District</u></b> Project Number: <b>Witch Hazel Facilities/2401</b> Project Manager: <b>Dale Voeller</b>	<b>Report ID:</b> <b>A4L1453 - 12 26 24 1201</b>
---	--	---

**REPORTING NOTES AND CONVENTIONS (Cont.):**

**Blanks (Cont.):**

Sample results flagged with a 'B' or 'B-02' qualifier are potentially biased high if the sample results are less than ten times the level found in the blank for inorganic analyses, or less than five times the level found in the blank for organic analyses. 'B' and 'B-02' qualifications are only applied to sample results detected above the Reporting Level.

**Preparation Notes:**

**Mixed Matrix Samples:**

**Water Samples:**

Water samples containing significant amounts of sediment are decanted or separated prior to extraction, and only the water portion analyzed, unless otherwise directed by the client.

**Soil and Sediment Samples:**

Soil and Sediment samples containing significant amounts of water are decanted prior to extraction, and only the solid portion analyzed, unless otherwise directed by the client.

**Sampling and Preservation Notes:**

Certain regulatory programs, such as National Pollutant Discharge Elimination System (NPDES), require that activities such as sample filtration (for dissolved metals, orthophosphate, hexavalent chromium, etc.) and testing of short hold analytes (pH, Dissolved Oxygen, etc.) be performed in the field (on-site) within a short time window. In addition, sample matrix spikes are required for some analyses, and sufficient volume must be provided, and billable site specific QC requested, if this is required. All regulatory permits should be reviewed to ensure that these requirements are being met.

Data users should be aware of which regulations pertain to the samples they submit for testing. If related sample collection activities are not approved for a particular regulatory program, results should be considered estimates. Apex Laboratories will qualify these analytes according to the most stringent requirements, however results for samples that are for non-regulatory purposes may be acceptable.

Samples that have been filtered and preserved at Apex Laboratories per client request are listed in the preparation section of the report with the date and time of filtration listed.

Apex Laboratories maintains detailed records on sample receipt, including client label verification, cooler temperature, sample preservation, hold time compliance and field filtration. Data is qualified as necessary, and the lack of qualification indicates compliance with required parameters.

**Benzofluoranthene Isomer Reporting:**

Due to coelutions present on the analytical column, the results reported for Benzo(b+j)fluoranthene(s) represent the concentration of both the Benzo(b)fluoranthene and Benzo(j)fluoranthene isomers. Calibration, validation and accreditation are based on the Benzo(b)fluoranthene isomer.

Apex Laboratories

*The results in this report apply to the samples analyzed in accordance with the chain of custody document(s) and updated by any subsequent written communications. This analytical report must be reproduced in its entirety.*

Jason Woodcock, Project Manager



**ANALYTICAL REPORT**

**Apex Laboratories, LLC**

6700 S.W. Sandburg Street  
Tigard, OR 97223  
503-718-2323  
ORELAP ID: OR100062

<b><u>PBS Engineering and Environmental</u></b> 4412 S Corbett Ave Portland, OR 97239	Project: <b><u>Hillsboro School District</u></b> Project Number: <b>Witch Hazel Facilities/2401</b> Project Manager: <b>Dale Voeller</b>	<b>Report ID:</b> <b>A4L1453 - 12 26 24 1201</b>
---	--	---

**Decanted Samples:**

Soils/Sediments:

Unless TCLP analysis is required or there is notification otherwise for a specific project, all Soil and Sediments containing excess water are decanted prior to analysis in order to provide the most representative sample for analysis.

Water Samples:

Water samples containing solids and sediment may need to be decanted in order to eliminate these particulates from the water extractions. In the case of organics extractions, a solvent rinse of the container will not be performed.

Volatiles Soils (5035s)

Samples that are field preserved by 5035 for volatiles are dry weight corrected using the same dry weight correction as for normal analyses. In the case of decanted samples, the dry weight may be performed on a decanted sample, while the aliquot for 5035 may not have been treated the same way. If this is a concern, please submit separate containers for dry weight analysis for volatiles can be provided.

All samples decanted in the laboratory are noted in this report with the DCNT qualifier indicating the sample was decanted.

Apex Laboratories

*The results in this report apply to the samples analyzed in accordance with the chain of custody document(s) and updated by any subsequent written communications. This analytical report must be reproduced in its entirety.*

Jason Woodcock, Project Manager



ANALYTICAL REPORT

Apex Laboratories, LLC
6700 S.W. Sandburg Street
Tigard, OR 97223
503-718-2323
ORELAP ID: OR100062

Table with 3 columns: Client (PBS Engineering and Environmental), Project (Hillsboro School District), and Report ID (A4L1453 - 12 26 24 1201).

LABORATORY ACCREDITATION INFORMATION

ORELAP Certification ID: OR100062 (Primary Accreditation)
EPA ID: OR01039

All methods and analytes reported from work performed at Apex Laboratories are included on Apex Laboratories' ORELAP Scope of Certification, with the exception of any analyte(s) listed below:

Apex Laboratories

Table header with columns: Matrix, Analysis, TNI\_ID, Analyte, TNI\_ID, Accreditation

All reported analytes are included in Apex Laboratories' current ORELAP scope.

Secondary Accreditations

Apex Laboratories also maintains reciprocal accreditation with non-TNI states (Washington DOE), as well as other state specific accreditations not listed here.

Subcontract Laboratory Accreditations

Subcontracted data falls outside of Apex Laboratories' Scope of Accreditation. Please see the Subcontract Laboratory report for full details, or contact your Project Manager for more information.

Field Testing Parameters

Results for Field Tested data are provided by the client or sampler, and fall outside of Apex Laboratories' Scope of Accreditation.

Apex Laboratories

Handwritten signature of Jason Woodcock

The results in this report apply to the samples analyzed in accordance with the chain of custody document(s) and updated by any subsequent written communications. This analytical report must be reproduced in its entirety.

Jason Woodcock, Project Manager



ANALYTICAL REPORT

**Apex Laboratories, LLC**

6700 S.W. Sandburg Street  
Tigard, OR 97223  
503-718-2323  
ORELAP ID: OR100062

<b><u>PBS Engineering and Environmental</u></b> 4412 S Corbett Ave Portland, OR 97239	Project: <b><u>Hillsboro School District</u></b> Project Number: <b><u>Witch Hazel Facilities/2401</u></b> Project Manager: <b><u>Dale Voeller</u></b>	<b>Report ID:</b> <b>A4L1453 - 12 26 24 1201</b>
---	--	---

WD# A4L1453

**Lead in Drinking Water Testing Program**

Date Collected: 12/14/2024

PBS Project: 24013061 / 0004

School Name: Witch Hazel Facilities

Building: Main

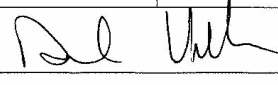
Building Number: 22390001

Analysis Requested: Lead (Pb) in Drinking Water

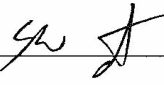
Email Results To: voeller@pbsusa.com

Turnaround Time: 10-day

#	Fixture Number	Sample Number	Room / Location
1	001	22390001-001SF24A	Construction side, break area sink
2	002	22390001-002BF24A	Construction side, restroom sink
3	003	22390001-003BF24A	Construction side, west cubicles restroom sink
4	004	22390001-004BF24A	Receiving, restroom sink
5	005	22390001-005SF24A	Resource warehouse, utility sink
6	006	22390001-006IM24A	Custodial storage at west wall, ice machine
7	007	22390001-007SF24A	Custodial storage at west wall, sink faucet
8	008	22390001-008BF24A	Facilities records storage, mens restroom -- left sink
9	009	22390001-009BF24A	Facilities records storage, mens restroom -- right sink
10	010	22390001-010BF24A	Facilities records storage, right side restroom, sink faucet
11	011	22390001-011BF24A	Facilities, front office restroom sink
12	12	22390001-012SF24A	Facilities, break room sink faucet
13	13	22390001-013SF24A	Facilities, break room sink sprayer
14	14	22390001-014SF24A	Facilities, break room coffee maker hot water tap
15	15	22390001-015wc24A	Facilities, break room water cooler
16	16		
17	17		
18	18		
19	19		
20	20		

Relinquished By/Signature: 

Date/Time: 12/16/24 2:00 PM

Received By/Signature:  APEX LABS

Date/Time: 12/17/24 1337

Apex Laboratories



Jason Woodcock, Project Manager

*The results in this report apply to the samples analyzed in accordance with the chain of custody document(s) and updated by any subsequent written communications. This analytical report must be reproduced in its entirety.*



ANALYTICAL REPORT

**Apex Laboratories, LLC**

6700 S.W. Sandburg Street  
Tigard, OR 97223  
503-718-2323  
ORELAP ID: OR100062

<b>PBS Engineering and Environmental</b> 4412 S Corbett Ave Portland, OR 97239	Project: <b>Hillsboro School District</b> Project Number: <b>Witch Hazel Facilities/2401:</b> Project Manager: <b>Dale Voeller</b>	<b>Report ID:</b> <b>A4L1453 - 12 26 24 1201</b>
--	--	---

**APEX LABS COOLER RECEIPT FORM**

**Client:** DBS **Element WO#:** A4L1453  
**Project/Project #:** Witch Hazel Facilities Main 24013061/0004

**Delivery Info:**

**Date/time received:** 12/17/24 @ 1337 **By:** EST  
**Delivered by:** Apex  Client  ESS  FedEx  UPS  Radio  Morgan  SDS  Evergreen  Other

**From USDA Regulated Origin?** Yes  No   
**Cooler Inspection** **Date/time inspected:** 12/17/24 @ 1417 **By:** EST

**Chain of Custody included?** Yes  No   
**Signed/dated by client?** Yes  No   
**Contains USDA Reg. Soils?** Yes  No  Unsure (email RegSoils)

	Cooler #1	Cooler #2	Cooler #3	Cooler #4	Cooler #5	Cooler #6	Cooler #7
Temperature (°C)	<u>17.6</u>						
Custody seals? (Y/N)	<u>N</u>						
Received on ice? (Y/N)	<u>N</u>						
Temp. blanks? (Y/N)	<u>N</u>						
Ice type: (Gel/Real/Other)	<u>NA</u>						
Condition (In/Out):	<u>OUT</u>						

**Cooler out of temp? (Y/N)**  Possible reason why: Drinking water S  
**Green dots applied to out of temperature samples?** Yes  No   
**Out of temperature samples form initiated?** Yes  No

**Sample Inspection:** **Date/time inspected:** 12/17/24 @ 1800 **By:** KN  
**All samples intact?** Yes  No  **Comments:** \_\_\_\_\_

**Bottle labels/COCs agree?** Yes  No  **Comments:** \_\_\_\_\_

**COC/container discrepancies form initiated?** Yes  No

**Containers/volumes received appropriate for analysis?** Yes  No  **Comments:** \_\_\_\_\_

**Do VOA vials have visible headspace?** Yes  No  NA   
**Comments:** \_\_\_\_\_

**Water samples: pH checked:** Yes  No  NA  **pH appropriate?** Yes  No  NA  **pH ID:** AR3E172  
**Comments:** \_\_\_\_\_

**Labeled by:** KN **Witness:** DM **Cooler Inspected by:** KN

Form Y-003 R-02

Apex Laboratories

Jason Woodcock, Project Manager

*The results in this report apply to the samples analyzed in accordance with the chain of custody document(s) and updated by any subsequent written communications. This analytical report must be reproduced in its entirety.*