



WELCOME TO WATERBURY!

Kindergarten Round Up

February 12, 2025



WELCOME WILDCATS!

PRINCIPAL JON POKORA

ASSISTANT PRINCIPAL NICOLE FRICANO

1. OVERVIEW-REGISTRATION
2. HEALTH REQUIREMENTS
3. DISCUSS TYPICAL KINDERGARTEN DAY
4. Q AND A WITH THE STAFF



Office Contact Information

Melinda Carone - 12 Month Secretary Ext. 4207

Kim Matson - 10 Month Secretary Ext. 4205

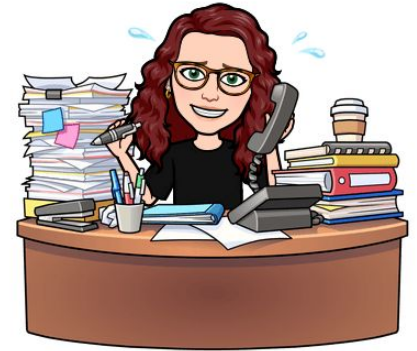
Main 630-893-8180

Attendance 630-894-4299

Fax 630-539-2316

mcarone@esd20.org

kmatson@esd20.org



We look forward to meeting our new students!

Mrs. Carone and Mrs. Matson

REGISTRATION

- DOCUMENTS NEEDED FOR NEW FAMILIES
 - ORIGINAL BIRTH CERTIFICATE
 - MORTGAGE BILL/TAX BILL/LEASE AGREEMENT
 - AFFIDAVITS NEEDED IF YOU ARE LEAVING WITH SOMEONE AND YOU ARE NOT ON THE MORTGAGE OR LEASE
 - 2 UTILITY BILLS &/OR VEHICLE REGISTRATION
 - PHOTO ID OF PARENT
- REGISTRATION FEES PAID AT TIME OF REGISTRATION FOR EARLY BIRD DISCOUNT:
CASH, CHECK, CREDIT CARD - IF NEEDED WAIVER OF FEES / FREE REDUCED LUNCH FORMS AVAILABLE

REGISTRATION HELP

- REGISTRATION BEGINS MONDAY, MARCH 3RD
 - EARLY BIRD DISCOUNT (\$50 OFF) IF REGISTRATION COMPLETE BY APRIL 30TH
- HELP WITH REGISTRATION:
 - OPEN HOUSE APRIL 8TH 4-7PM AT SPRINGWOOD MIDDLE SCHOOL
 - OPEN HOUSE AUGUST 6TH 4-7PM AT SPRINGWOOD MIDDLE SCHOOL
- INCLUDED: HELP WITH AFFIDAVITS, WAIVER OF FEES, FEE PAYMENTS, F/R LUNCH APPLICATIONS, BRING REGISTRATION DOCUMENTS TO COPY

ROSELLE PARK DISTRICT CLUB KIDS

BEFORE/AFTER CARE

- School-Age Childcare (rparks.org)
- REGISTER ONLINE OR IN PERSON AT THE ROSELLE PARK DISTRICT

THE BEFORE SCHOOL PROGRAM OPERATES DAILY FROM 6:30AM UNTIL THE START OF SCHOOL AND THE AFTER-SCHOOL PROGRAM OPERATES DAILY FROM THE END OF SCHOOL UNTIL 6:00PM. FOR THOSE ENROLLED IN THE AFTER-SCHOOL PROGRAM, ALL EARLY RELEASE AND HALF DAYS ARE INCLUDED, AND NO SEPARATE REGISTRATION IS REQUIRED.



Health Office Information

A state required physical exam with proof of vaccinations, vision exam and dental exam are required for all incoming Kindergartners. Please turn these in as soon as possible.

- All Kindergartners MUST have state required school physical dated after Aug 22, 2023
E-mail it to mcarone@esd20.org, mail or drop it off to Waterbury Elementary front office.
Keeneyville School District 20 policy is student exclusion from school if the physical exam and proof of vaccinations are not received by October 15th, 2025.
- Vision Exam by optometrist or ophthalmologist dated after Aug 21, 2025
- Dental Exam dated after 12/15/2024 is due by May 15th but preferably as soon as possible
- Asthma/Food Allergies/Diabetes/Seizures/Medications at school
Forms are available online, **must be signed by a parent AND a doctor.**
<https://www.esd20.org/district/student-services/d20-health-services>
 - Please set up a time August 19th or 20th to drop off medications to the school nurse.
This needs to be done by a parent or guardian
- All excusals from gym/PE will require a note from a doctor



Students should stay home if.....

All students should stay home from school if they have any of the following:

- Fever (100.0 or higher)
- Vomiting or diarrhea
- Unexplained rash
- Head lice that has not been treated
- Eye infection (redness, itching, crusty drainage from eye)
- Hospital stay and/or a visit to the ER

Students can return to school when.....

- No symptoms for 24 hours without medication
- Free from rash, eye infection, lice and/or evaluated and treated by a doctor as needed
- Release by medical doctor to return to school



Health Office Contact Information

Lisa Montiel, RN, PEL-CSN

Waterbury Elementary Health Office

630-894-4211

Fax 630-539-2316

lmontiel@esd20.org

More details are available in the Parent/Student Handbook

I'm looking forward to meeting our new students!

Have a safe and fun summer!

Nurse Lisa





WELCOME TO WATERBURY!

Kindergarten students come to school with a wide range of gifts, talents and experiences. We are ready for that!

Meet the Kindergarten Teachers:

Mrs. Iga Schultz

Mrs. Angela Sprague (Dollar)

Ms. Jessica Sorg

Mr. Andrew Van Gorp

KINDERGARTEN SCHEDULE



- Morning Meeting
- Calendar
- Math- Whole Group and Small Group
- Snack Break
- Phonics: Heggerty and Structured Literacy
- Second Step (Social Emotional Learning)
- Specials (P.E./Music/Art/S.T.E.M/Library)
- Writing
- Lunch/Recess
- Quiet Time
- Science
- Reading: Shared Reading and Small Group
- Play-Based Learning
- Closing Meeting



KINDERGARTEN READINESS: ACADEMIC SKILLS TO PRACTICE AT HOME

- Write name correctly using an uppercase letter first followed by lowercase letters
- Recognize a model of his or her name
- Recognizing numbers 0-10
- Counting to 10



KINDERGARTEN READINESS: FINE MOTOR SKILLS TO PRACTICE AT HOME

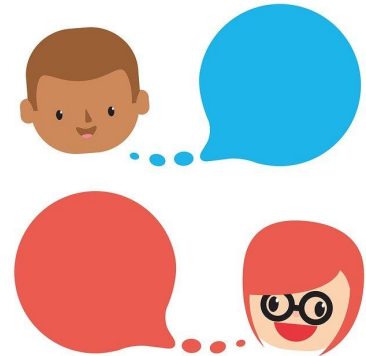
- Hold a pencil using the tripod grip (3 finger grip)
- Hold scissors the correct way and practice cutting paper
- Practice using a glue stick and regular glue
 - (Just a Dot Not a Lot)
- Practice using a zipper on a backpack, lunch box, jacket, etc.



KINDERGARTEN READINESS: ORAL LANGUAGE (SPEAKING AND LISTENING)

SKILLS TO PRACTICE AT HOME

- Read books out loud to your child (listening quietly)
- Answer questions about the story
- Sing songs, chants, nursery rhymes
- Speak in full sentences
- Take turns talking back and forth
- Know how to say both first and last name
- Stating their birthday
- Stating parents “real” names



KINDERGARTEN READINESS: SELF CARE SKILLS TO PRACTICE AT HOME

- Zip and unzip their backpack/lunchbox
- Put on coat & shoes independently
- Open lunch/snack items independently (baggies, juice box, etc)
- Using the bathroom by self:
 - Wiping, Flushing, Washing hands, Zip/Unzip or button/unbutton pants





IN ADDITION



- This will be an adjustment for your child. Be prepared for your child to come home and sleep a lot.
- When talking about starting school, please keep questions and statements about school positive.
- We are partners in your child's academic and social growth. We have an open line of communication. We are here for you!
- In the first two weeks of school, please send your child off to school with a quick "goodbye". It is an emotional time for families but it is really hard for student's to see their parents crying. They will take their cue from you! Quick goodbyes help students walk in school with more confidence!

Ms. Sylwia Cebula
Ms. Nicole Mikucki
Mrs. Colleen Staniszewski

EL TEAM

We work with students who speak another language and who qualify for ESL according to the home language survey and the kinder screener.

Home Language Survey

*If you answer yes to “is a language other than English spoken in your home” or “does your child speak a language other than English?” We will screen your child for ESL.

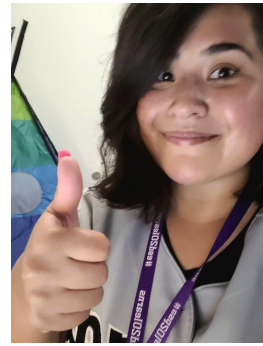
If your child qualifies, we will be working with them inside their Kindergarten classrooms.





SOCIAL WORKER: TIFFANY PROBST

Welcome to Waterbury!



School social workers provide social-emotional support for students, their families, school staff, and the community at large. We offer guidance, resources, and tools to help all learners develop the skills they need to navigate the ups and downs of school and growing up. We are committed and truly inspired to help create a supportive and compassionate learning environment for all!!

Contact information:

tprobst@esd20.org

630-894-4458



SOCIAL WORKER: KAITLYN STANLEY



Welcome to Waterbury!

Our role in the school is to ensure that all students feel included, safe, and good about being at school. We support the social/emotional needs of every student as needed. One of the best parts of working in a school is seeing the growth that happens over the course of the school year and seeing the confidence that students gain, especially in Kindergarten! Please do not hesitate to reach out, we are here for you guys!

Contact information:

kstanley@esd20.org

630-894-4229

HOW DO SCHOOL SOCIAL WORKERS PROVIDE SUPPORT:

- Meet with students individually or in groups to develop specific skills and strategies (self-esteem, social skills, friendship, coping strategies, etc.)
- Connect families with community resources
- Conduct structured lessons in the classroom
- Consult and collaborate with students, families, staff, and community resources to promote student adjustment and academic success.

QUESTIONS?