

Gifted Resources

→ Testing Students for Gifted Services

◆ If you believe that your child's needs are not being met in the General Education classroom, contact their teacher or the JMMS Special Education Head Teacher at (505) 897-0101 ex. 40812 to begin the referral process.

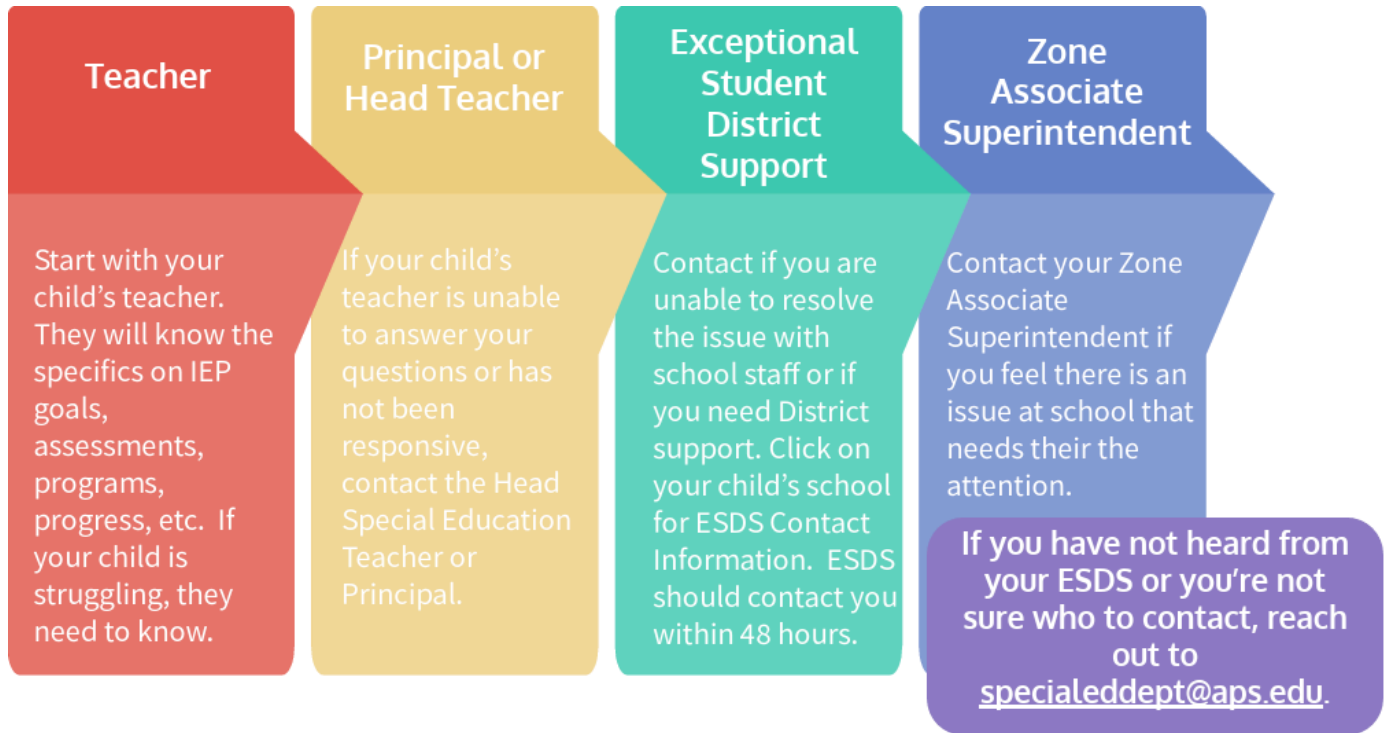
◆ Gifted Areas of Need:

- Specific Aptitude or Achievement
- General Intellectual Ability
- Creative or Divergent Thinking
- Problem Solving or Critical Thinking
- Artistic Ability
- Leadership Ability

◆ If you are interested in having your child tested for gifted services, there are testing windows in the Fall and Spring.

◆ [Albuquerque Public Schools Gifted Education Referral Guide for Parent/Guardian](#)

→ Lines of Communication



→ Continuum of Services

Gifted Education is a service, not a setting

Continuum	Service Description
Regular education with weekly monitoring from a special education gifted provider	Special ed teacher checking on the student in a general ed classroom for a minimum of 15 minutes a week.
Regular education with daily consultation from a special education gifted provider	Special Education teacher is consulting with the general ed teacher and not providing direct service to the student.
Regular education with gifted service and supports included in that setting , which is aligned with the general curriculum.	Utilizing such strategies as flexible groupings, universally designed curriculum, overlapping curriculum, cooperative learning, peer tutoring, parallel or alternative instruction, team teaching.
Gifted Services provided for part of the day in a resource room or a special education classroom	Gifted Services provided in separate gifted education classroom.

→ Selected Gifted Education Service Models (NMTAM)

“Each district is different and service models should be determined based on the needs of the student, availability of resources, and funding.”

Program Model	Description
Cluster Grouping	Instead of separating identified gifted students among classes, a cluster of 5-10 students is placed in one classroom with a regular education teacher who has training in how to teach gifted students.
General Classroom Enrichment	An area of the classroom is set aside for independent study and individualization in the content areas with students who are gifted. The focus is on the process rather than on content.
Advanced Classes within and across Grade Level	Advanced classes are designed for students who have already mastered the basic core of subject matter. Such courses offer consistent study in more depth and breadth to a curricular area with less redundancy from class to class or level to level.

Excerpted from New Mexico Gifted Technical Assistance Manual pp. 20-22

Program Model	Description
Acceleration	Studying the regular curriculum earlier or at a faster pace than a typical student.
Curriculum Compacting	This procedure is used for streamlining the general education curriculum for students who are capable of mastering it at a faster pace (Reis, Burns, Renzulli, 1992). Individuals or groups of students are assessed to determine their level of proficiency in general education course outcomes, units, or courses. A determination is made of content or skills not yet mastered, and a plan is made to complete the remaining material and to progress to more appropriate and challenging instruction and materials.

→ General Flowchart of Annual IEP



→ **How to Prepare for the Annual Gifted IEP**

◆ Family and student input is necessary during the IEP regarding academic and extracurricular goals. Here are some topics for parents to consider and discuss with the student prior to the meeting:

- What are your short term and long term goals for your child?
- What would you like teachers to be aware of to best meet your child's needs?
- What are your child's strengths?
- What are your child's weaknesses?

→ **Gifted Offerings at JMMS and Cibola HS**

◆ In middle school, Gifted services are provided through core content classes:

- **6th grade:** Gifted ELA, Gifted Math, Gifted Seminar
- **7th grade:** Gifted ELA, Gifted Math, Gifted Seminar II
- **8th grade:** Gifted ELA, Gifted Seminar III

◆ In high school, students receive gifted services through their Gifted electives:

- **9th grade Gifted options in the past have included:**
 - P.O.W.E.R. Health
 - Contemporary Studies I

◆ Advanced Placement (AP) or Honors classes are separate from the Gifted Program and do not require IEP documentation.

◆ If a student chooses not to take any Gifted electives one year, they may always be readmitted to the Gifted Program the next year. No additional testing is required.

◆ [See Cibola's Registration page for more information.](#)

More Gifted Resources for Families

Local:

1. [APS Gifted Advisory Committee](#) – A committee supporting gifted education within Albuquerque Public Schools through advocacy and collaboration. See website for community meeting dates/times.
2. [APS Gifted Family Resource Website](#) – A resource hub for Albuquerque Public Schools families navigating gifted education services.
3. [Albuquerque Association for Gifted and Talented Students \(AAGTS\)](#) – A local organization that advocates for gifted education, provides resources for families, and supports gifted students in Albuquerque.

State:

4. [NMPED Gifted Education Information](#) – The New Mexico Public Education Department's official page on gifted education policies and programs.
5. [NMPED Gifted Technical Assistance Manual](#) – A guide outlining regulations, best practices, and resources for gifted education in New Mexico.
6. [New Mexico Association for the Gifted](#) – A state-level organization offering advocacy, professional development, and resources for gifted education.
7. [NMAC Gifted Children 6.31.3](#) – The official New Mexico Administrative Code section defining gifted education regulations in the state.
8. [New Mexico Gifted Education Resources](#) – This Canvas Course serves as a resource page for Gifted Education in the state of New Mexico. It hosts discussions, all training recordings, all training slide decks, as well as any other documents, links, or studies that help provide equitable gifted identification and services to students.

National:

9. [National Association for Gifted Children](#) – A national organization dedicated to supporting gifted education, research, and policy development.
10. [Hoagies' Gifted Education Page](#) – A comprehensive resource site for parents, teachers, and students in the gifted education community.