

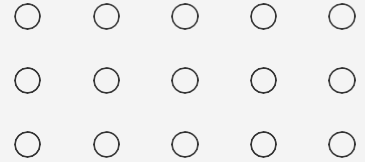


Growth & Planning
Meeting
January 13, 2025

Presentations
for
Repurposing
Coronado
Village
Elementary



Repurposing Coronado Village Elementary- Special Ed Department January 13, 2025



Current Situation

- ○
- ○
- ○
- ○
- ○
- ○
- ○
- ○
- ○

-lack of space

-spread out all over the district (APE, OT, PT, Homebound, VI, DHH, AT, and Child Find)

-lack of storage

-lack of meeting spaces (parents, legal meetings)

-inability to grow the Adult Years Program (AYP) 18 + transition program due to current space limitations (limited opportunities for real-world application)



Proposed Benefits of Relocation

- ○ -Ability to house the SPED Dept. under one roof-APE, OT, PT, Homebound, VI, DHH, AT, and Child Find Depts.
- ○ -Ability to store needed supplies and materials for students and classrooms in a more efficient manner
- ○ -Ability to hold more parent engagement events and meetings
- ○ -Ability to hold legal meetings when needed within the SPED Dept. instead of in other meeting rooms throughout the district
- ○ -By locating an 18+ transition program outside the high school environment, it would provide a more appropriate space where adult students can focus on gaining the skills necessary for adult life in a setting better aligned with their developmental stage



Impact on Students and the Community

- ○
- ○
- ○
- ○
- ○
- ○
- ○
- ○
- ○

-Greater collaboration among related service providers

-Transition goals are different for 18+ programs. Transition programs involve collaboration with local adult services, employers, and community organizations to help students transition into adulthood. High schools, in contrast, focus on academic preparation and social development within a more structured environment.

-Opportunities for various student-based enterprises to be developed

-On-campus job sites to teach emerging skills for students in need of more support before moving into the community work sites



Repurposing
Coronado Village
Elementary - JCARE

JCARE Procedures

- Student enrollment is held at the end of each day
- Daily procedures
- Campus expectations/structure

JCARE

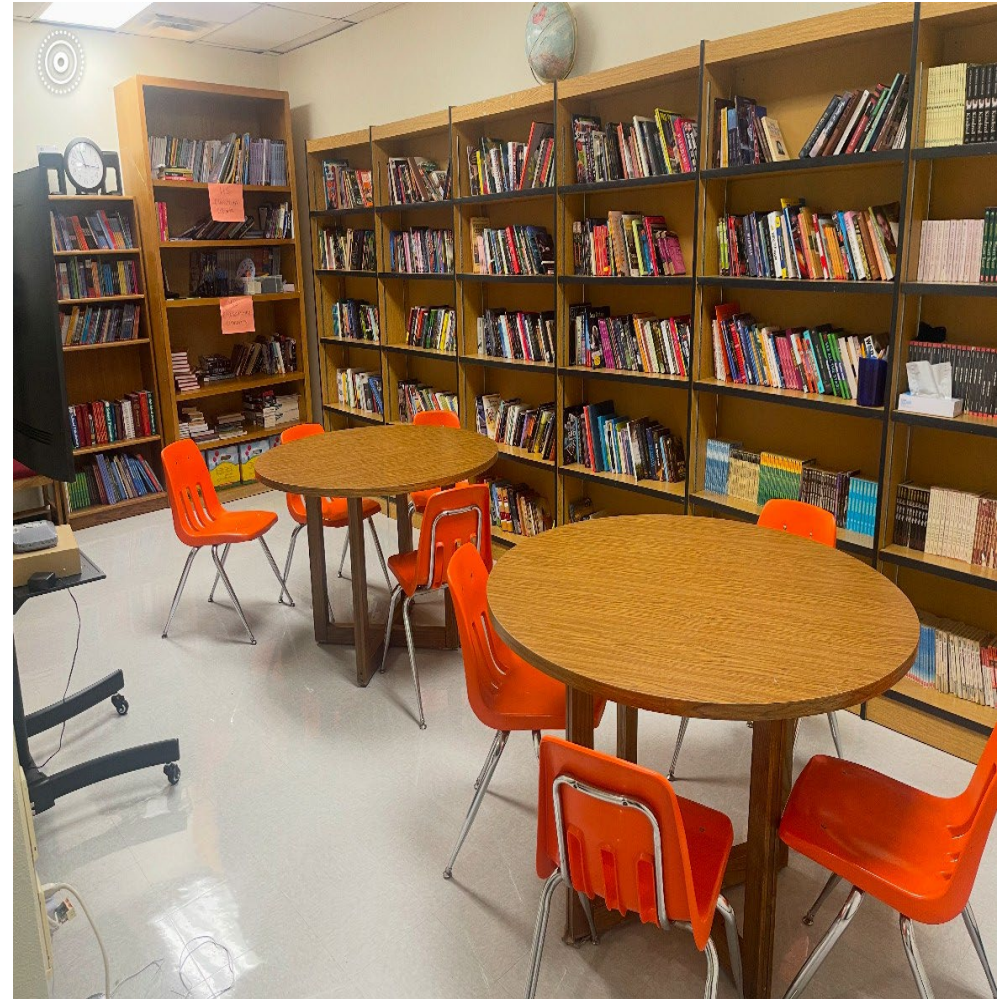
Challenges:

- Limited library space – 2 tables
- Limited outdoor space for middle school PE students
- Cafeteria (9 tables)
- Limited Parking
- Limited Storage

Cafeteria



Classroom/Library



Limited Parking



Limited PE Space



Benefits of Coronado Repurposed as JCARE

- MS and HS housed in separate wings
- Full size library for classroom instruction/research
- Full size cafeteria for student lunches, safety trainings, student/parent meetings, and community meetings
- Outdoor instructional space (PE)
- Provide adequate parking for our parents and staff
- Storage – technology equipment, textbooks, custodial supplies and equipment
- Provide our students/staff/parents the best customer service and learning environment possible.



JUDSON ISD POLICE
DEPARTMENT(supporting JCARE to
Coronado Village Elementary)

*202 School Street
Converse, Texas 78109*

- We are located at 202 School (The old tax building) next to JCARE. We are the 4th largest school district in Bexar County.
- Currently our police department has 1 bathroom for employees and civilians.
- Not enough parking spaces for patrol units and personal vehicles.
- No training facility and there is no space to conduct a department meeting.
- JISD PD has a training simulator with equipment, however we would greatly benefit from additional space to conduct training.
- No 911 Communication Center. Our secretary monitors phones, visitors, radio transmissions, Verkada camera system on 2 TV's, monitors ARMS, from a small area.
- A long-term goal has always been to establish a 911 communication center; this would help save the district money because the square footage is available next door. Also providing space for a reunification, media, emergency management conference room to serve our district officials school board, city officials, and county.
- Our conference room doubles as our break room.
- Inadequate office space for Supervisors.
- Need additional space for evidence processing.
- One of the benefits to relocating JCARE would allow Judson ISD Police Department to support/partnership with our Career & Technical Education (CTE) Law Enforcement programs for JISD students. (Example: Utilizing the training simulator).