



LOCAL CONTROL & ACCOUNTABILITY PLAN 2024–2027

   
www.livermoreschools.org
(925) 606-3200
685 East Jack London Blvd.
Livermore, CA 94551

GOALS

COLLEGE & CAREER READINESS

SCHOOL ENVIRONMENT

PARENT ENGAGEMENT

A Community Report

The 2024-2027 Local Control and Accountability Plan (LCAP) is a 3-year plan built on our mission, vision, and goals for our students. Together, these guide the overall direction for district programs and operations.

Each year, Livermore Valley Joint Unified reviews the progress in meeting students' needs by looking at data and gathering feedback from students, families, staff, and community.

That review guides decisions about what we will do to support students and how we spend funds to provide services to all students based on their needs. Each District Goal is presented at the top of the page. For each goal, this report contains baseline data, feedback from our educational partners, and comparisons to state data when available.

Continuous Improvement Through the Cycle of Annual Planning

Continuous improvement means constantly reviewing successes and making adjustments

We review our students' progress each year by looking at **DATA** and gathering feedback from our students, families, staff and community. This review helps determine **ACTIONS** we will take and resources that we will **BUDGET** in order to improve **RESULTS** for all of our students.

RESULTS

DATA

ACTIONS

BUDGET

California is made up of diverse students with diverse needs. Every school district is given extra funds to support high priority students who face more challenges to succeed in school. The State refers to English Learners, Foster Youth, and Low-income students as "unduplicated" students because extra funds are given just once, even if a student falls into more than one of the three categories. One of every four Livermore Valley Joint Unified students are "unduplicated," and over \$8.1 million is allocated to support the needs of these students in LVJUSD.

OUR DISTRICT AT-A-GLANCE

13,000
STUDENTS

MISSION & VISION

Livermore Valley Joint Unified's mission is for each student to graduate with the skills needed to contribute and thrive in a changing world.

Our vision reflects our core values and guides our work in living our mission, honoring our non-negotiables and attaining our goals.

DRAFT

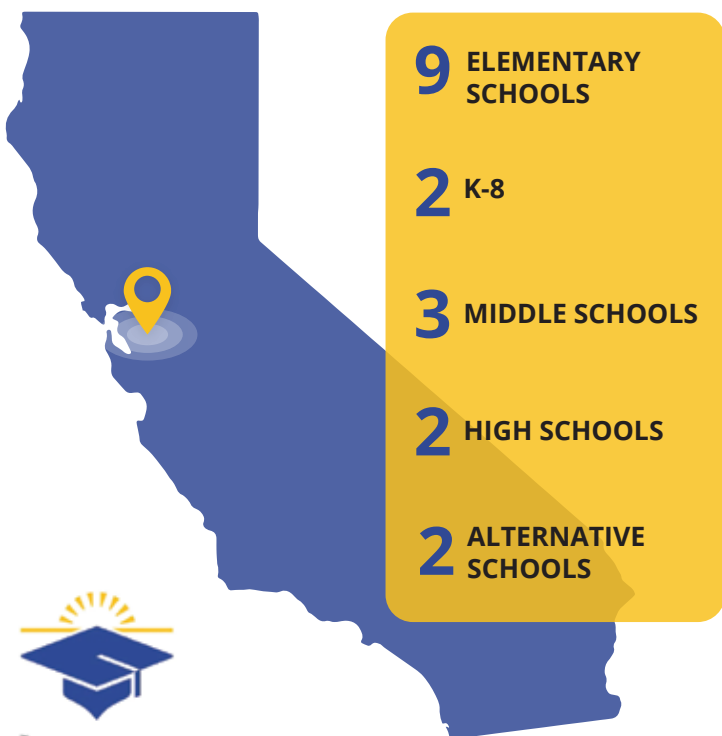
32%
LOW INCOME

10%
ENGLISH LEARNERS

1,400
EMPLOYEES

99.4%
GRADUATION RATE

LVJUSD SCHOOLS



LIVERMORE
SCHOOL DISTRICT

REPORT FEATURES



Within each goal area, staff use the most current data to make informed decisions about student, staff, and schools.



Educational partners including students, parents, families, staff, and community members shared feedback as part of the LCAP process. Throughout this report that feedback has been summarized and shown with this icon.



Using data and feedback from educational partners, LVJUSD included actions and services that total nearly \$10 million during the 2024-2025 school year

GOAL 1

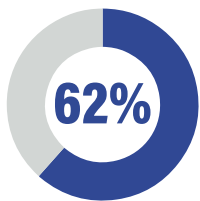
Increase the percentage of students who have the skills and knowledge to graduate from high school college and/or career ready.

01

DRAFT

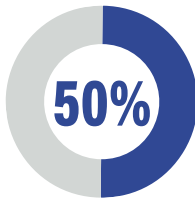
CURRENT DATA

English Language Arts



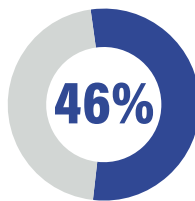
Percentage Met/Exceeded Standards on CAASPP ELA for all students; average distance from standard +25

Math



Percentage Met/Exceeded Standards on CAASPP Math for all students; Average distance from standard -10.4

Science



Percentage Met/Exceeded Standards on CAST for all students

1 in 2 students met A-G requirements

English Learners Making Progress toward English Language Proficiency

43%

English Learners Reclassified as Fluent English Proficient

9%

Students Scoring a 3 or Higher on an AP Exam

80%

Students Meeting A-G & Completing a CTE Pathway

16%

Students Graduating & Completing a CTE Pathway

32%

Students Graduating College and Career Ready

47%



Instructional Materials Access:
100%

Percentage of students with access to their own copies of standards-aligned instructional materials for use at school and home



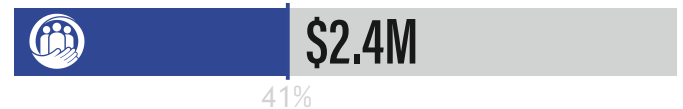
Teacher Mis-assignments:
1.4%

Percentage of teachers in a position for which the educator does not hold the correct certification

ACTIONS & BUDGET

\$5.9 MILLION

SCHOOL SITE SUPPORTS & PROGRAMS



ACADEMIC PROGRAMS & CURRICULUM



STUDENT SUPPORT & INTERVENTIONS



TEACHER DEVELOPMENT & SUPPORT



Increase support for interventions for students who are below grade level

There is a need for more paraeducators to support students with learning needs

GOAL 2

Provide an engaging, clean, healthy, and physically and emotionally safe environment to support learning at the highest levels.

02

DRAFT

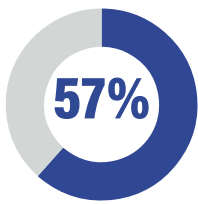
CURRENT DATA



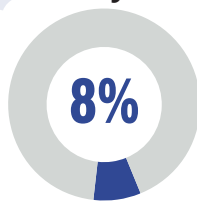
Facility Inspection Tool:
100%

Percentage of schools in good or exemplary condition

Students Reporting Favorable Teacher/Student Relationships



Low-Income, EL, and Foster Youth Students Served by COST*



*Coordination of Services Teams

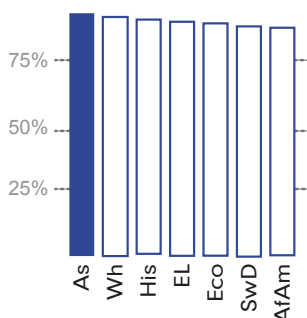
97%
of Students Graduated High School within 5 Years



District Attendance

94%

Student groups performing better than the district average are shown in solid blue and student groups performing below the district average have a blue border



AfAm=African American, As=Asian, Eco=Socioeconomically Disadvantaged, EL=English Learner, His=Hispanic, SwD=Students with Disabilities, Wh=White



Chronic Absenteeism:
15%



Suspension Rate:
3%



Expulsion Rate:
0.1%



Dropout Rates:
0% Middle School
1% High School

ACTIONS & BUDGET

\$3 MILLION

STUDENT BEHAVIOR & SOCIAL-EMOTIONAL SUPPORT



\$2.4M

60%

DISTRICT LEADERSHIP & INTERVENTION



\$770K

26%

STUDENT ATTENDANCE & EQUITY SUPPORT



\$417K

14%

Students feel there is a need for increased mental health supports

Our district and schools are committed to addressing disrespectful behavior and bullying

Professional Development to support the integration of social-emotional learning strategies into daily instruction would be valuable

GOAL 3

Increase parent engagement in student learning by providing parent education opportunities, enabling parent involvement in schools, and delivering effective communication; and increase partnerships with community organizations to maximize student achievement.

03

DRAFT

CURRENT DATA



Percentage of Parents/Guardians who Complete the Parent Survey:

Survey not in place yet, new system ready July 2024



Percentage of Parents/Guardians of Students who are Low-Income, English Learner, or Foster Youth who Agree or Strongly that they are Involved in their Student's School

Survey not in place yet, new system ready July 2024



Percentage of Parents/Guardians of Students with Disabilities who Agree or Strongly Agree that they are Involved in their Student's School

Survey not in place yet, new system ready July 2024

ACTIONS & BUDGET

\$1.1 MILLION

FAMILY & COMMUNITY ENGAGEMENT



STUDENT WELL-BEING & SUPPORT



TRANSLATION & INTERPRETATION SERVICES



Increased information for parents regarding Career Technical Education Pathways, UC/CSU a-g requirements, and securing funding for college

Parents request education opportunities to best support their children academically

Additional counselors to focus on parent outreach would be valuable