



POCATELLO/CHUBBUCK SCHOOL DISTRICT 25

LEARNING TODAY FOR THE POSSIBILITIES OF TOMORROW

Administration Offices
3115 Pole Line Road
Pocatello, Idaho 83201

Addendum No. 2

February 19, 2025

RE: 2025 – Central Plant Equipment Replacement at Indian Hills Elementary

FROM: Business Services
(208) 235-3270

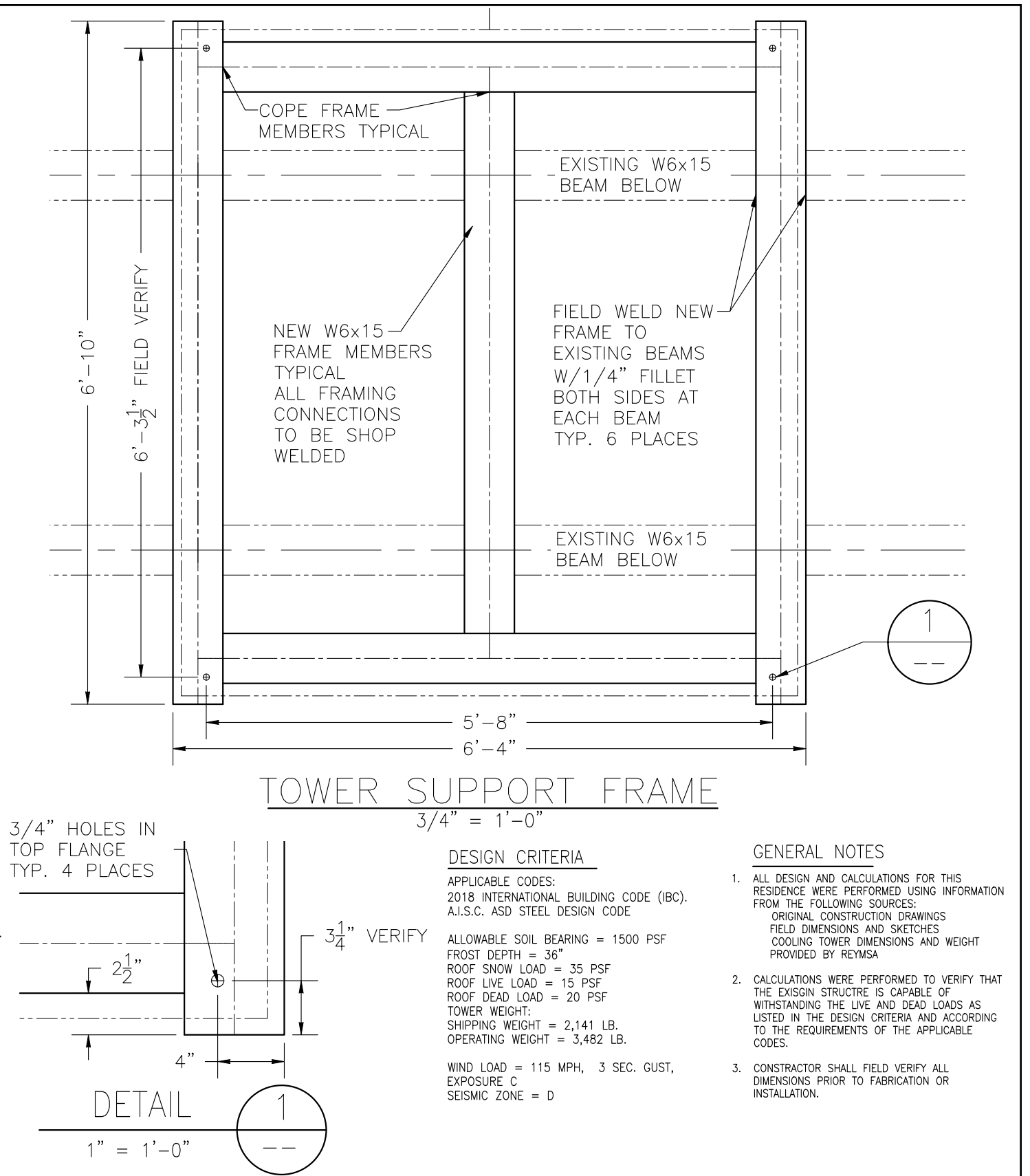
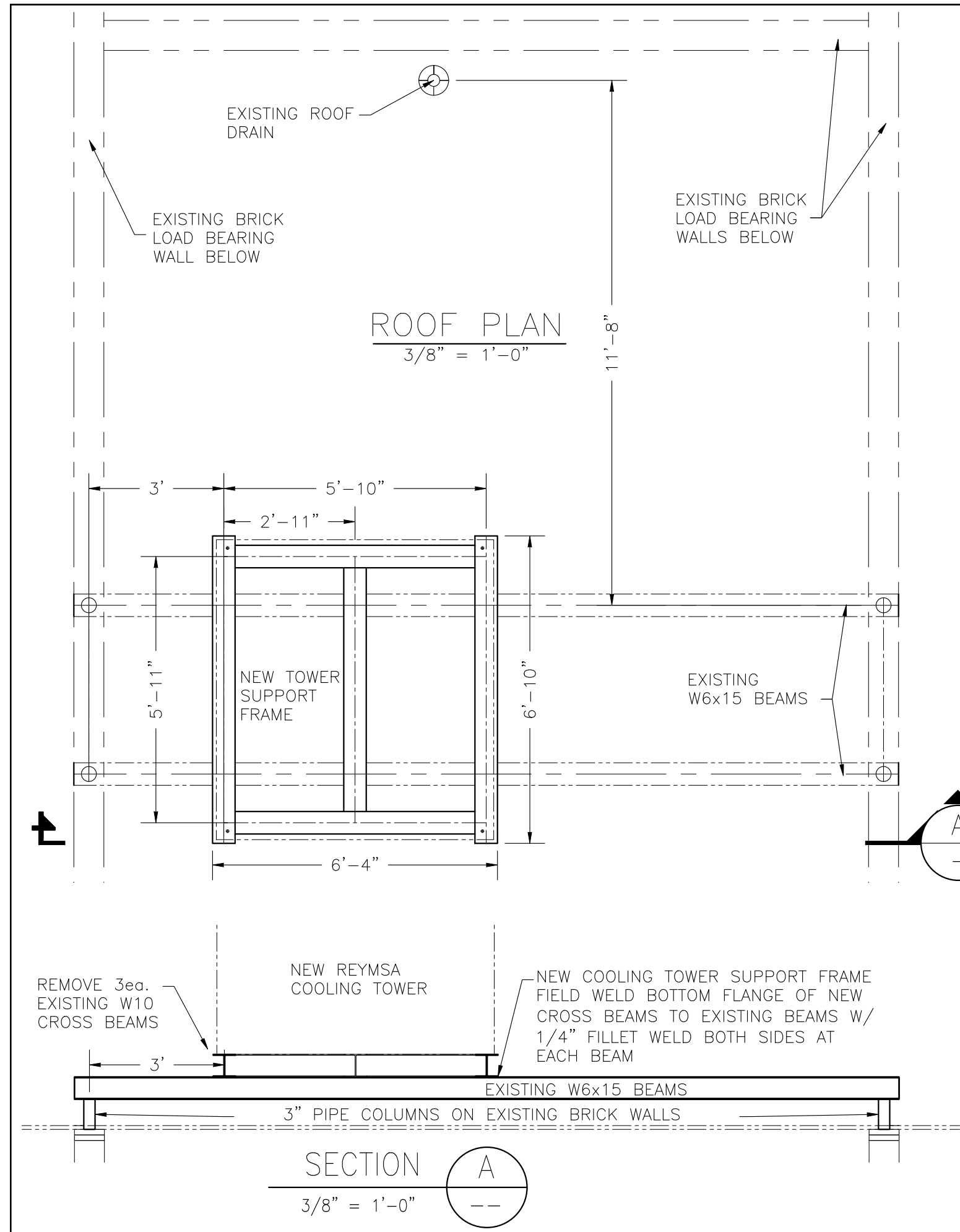
This Addendum becomes a part of the Contract Documents and modifies the original Bidding Specifications, as noted below. This addendum consists of one (1) page plus attachments. Total two (2) pages. Acknowledge Addendum on the Bid Proposal. **Failure to acknowledge Addendum(s) on the bid sheet may subject the bidder to disqualification.**

COOLING TOWER SUPPORT FRAME

1. Cooling Tower Support Frame design criteria and schematic for the replacement equipment.

NO OTHER CHANGES

END OF ADDENDUM No.2 – February 19, 2025, js



DESIGN CRITERIA

APPLICABLE CODES:
 2018 INTERNATIONAL BUILDING CODE (IBC).
 A.I.S.C. ASD STEEL DESIGN CODE

ALLOWABLE SOIL BEARING = 1500 PSF
 FROST DEPTH = 36"
 ROOF SNOW LOAD = 35 PSF
 ROOF LIVE LOAD = 15 PSF
 ROOF DEAD LOAD = 20 PSF
 TOWER WEIGHT:
 SHIPPING WEIGHT = 2,141 LB.
 OPERATING WEIGHT = 3,482 LB.

WIND LOAD = 115 MPH, 3 SEC. GUST,
 EXPOSURE C
 SEISMIC ZONE = D

GENERAL NOTES

- ALL DESIGN AND CALCULATIONS FOR THIS RESIDENCE WERE PERFORMED USING INFORMATION FROM THE FOLLOWING SOURCES:
 ORIGINAL CONSTRUCTION DRAWINGS
 FIELD DIMENSIONS AND SKETCHES
 COOLING TOWER DIMENSIONS AND WEIGHT PROVIDED BY REYMSA
- CALCULATIONS WERE PERFORMED TO VERIFY THAT THE EXISGIN STRUCTRE IS CAPABLE OF WITHSTANDING THE LIVE AND DEAD LOADS AS LISTED IN THE DESIGN CRITERIA AND ACCORDING TO THE REQUIREMENTS OF THE APPLICABLE CODES.
- CONSTRUCTOR SHALL FIELD VERIFY ALL DIMENSIONS PRIOR TO FABRICATION OR INSTALLATION.



Portneuf Valley Design Solutions
 Civil Engineering Services
 Mark Strong, P.E.

Cooling Tower Support Frame
 Indian Hills Elementary School
 Pocatello, Idaho

No.	Date	Revision
A	02-18-25	FOR FABRICATION

SCALE: VARIES	Sht 11 x 17 in
DWN: MJS	DATE: 02-13-25
CHK'D: M. STRONG	DATE: 02-18-25
DWG NO. 25005-S1	Rev