



**Local School Council Meeting
January 17, 2025
8:30 AM**

Members Present:

Katrina Larmond
Emelina Marin
Kelly James
Alexandra Sanchez
Renee Liverpool
Ashley Black
Nella Ancheta
Alicia Rojo
Crystal Reynolds
Britney Perez

Welcome & Introductions

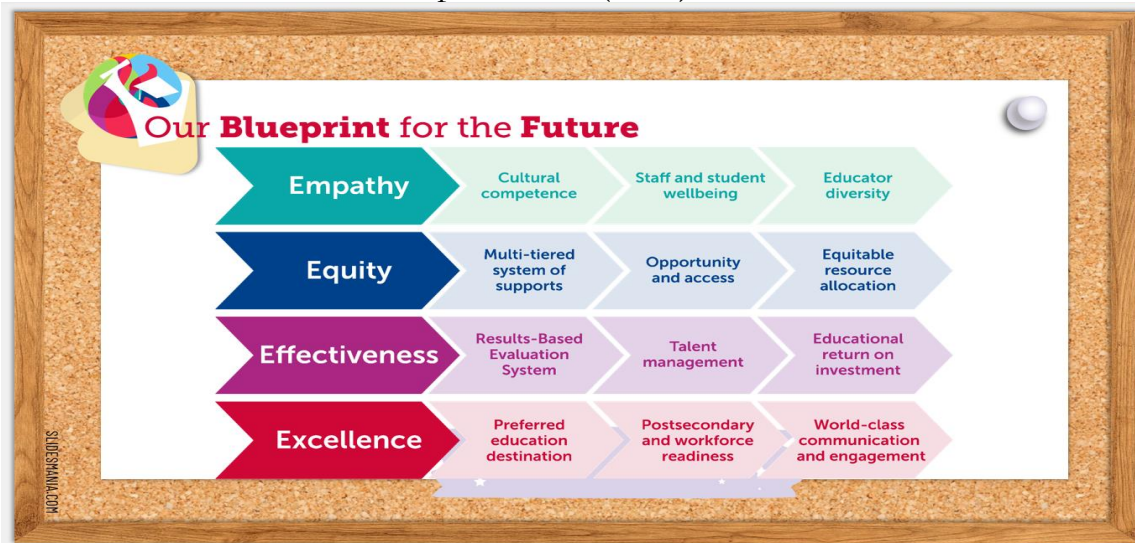
- **Katrina Larmond**- Principal at Bethesda ES
- **Crystal Reynolds**- Certified Teacher
- **Britney Perez**-Certified Teacher
- **Yolanda Lanuza**-Administrative Assistant
- **Alicia Rojo-Pena**-Parent of a student at Bethesda
- **Ashely Black**- Parent of a student at Bethesda & Business Person
- **Emelina Marin**- Parent of a student at Bethesda
- **Alexandra Sanchez**-Parent of a student at Bethesda
- **Nella Ancheta**-Parent of a student at Bethesda
- **Renee Liverpool**-Parent of a student at Bethesda & PTA President
- **Kelly James/CSI**-Business Person

Pledge of Allegiance

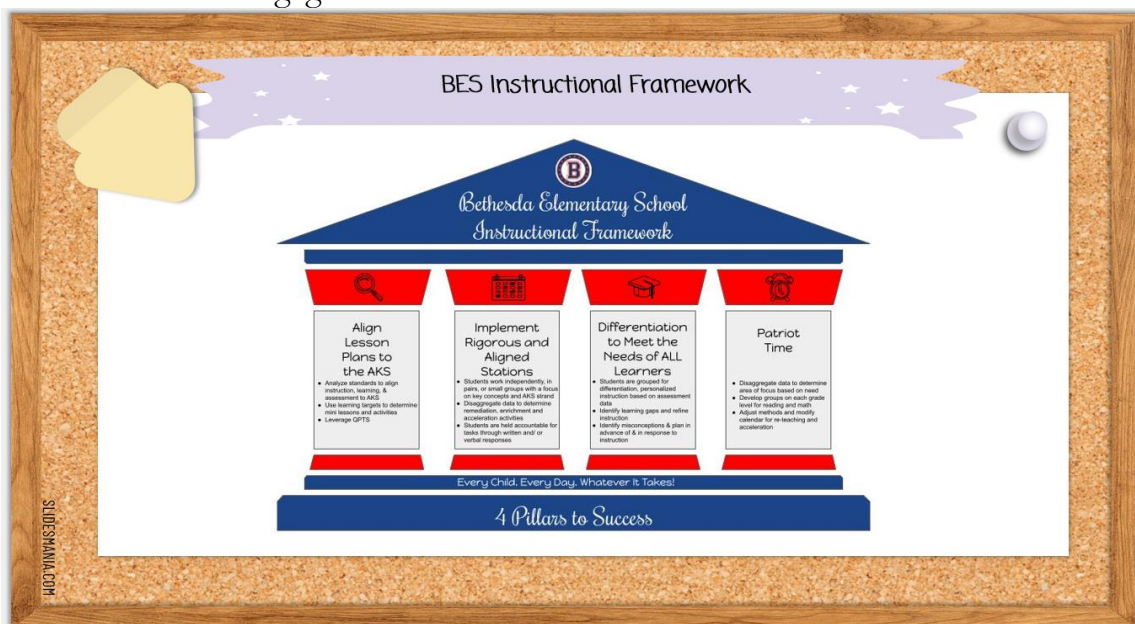
Student Presentations

LSPI Data Review

- Local School Plan of Improvement (LSPI)

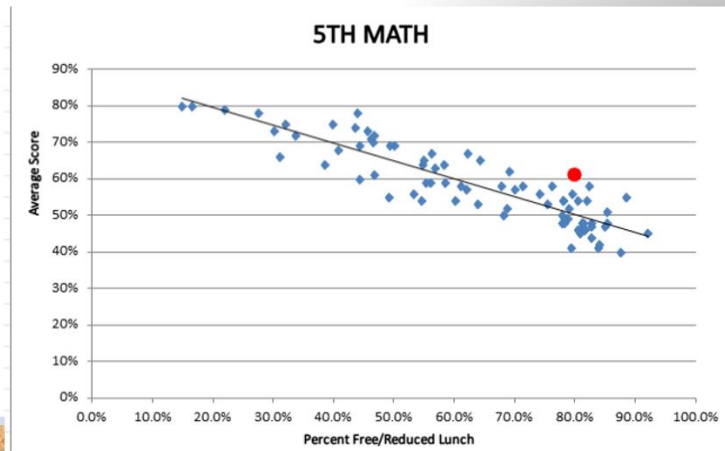


- Blueprint for the Future- GCPS Strategic Priorities 5-year plan.
- Four Strategic Priorities with 3 targeted goals.
- Bethesda has selected the following goals from each strategic priority.
 - 1 goal from Empathy. Bethesda chose Staff and Student Wellbeing.
 - 2 goals from Equity. We chose Multi-tiered System of Supports and Opportunity and Access.
 - 1 goal from Effectiveness. We selected Results-Based Evaluation System.
 - 1 goal from Excellence. World-class communication and engagement.



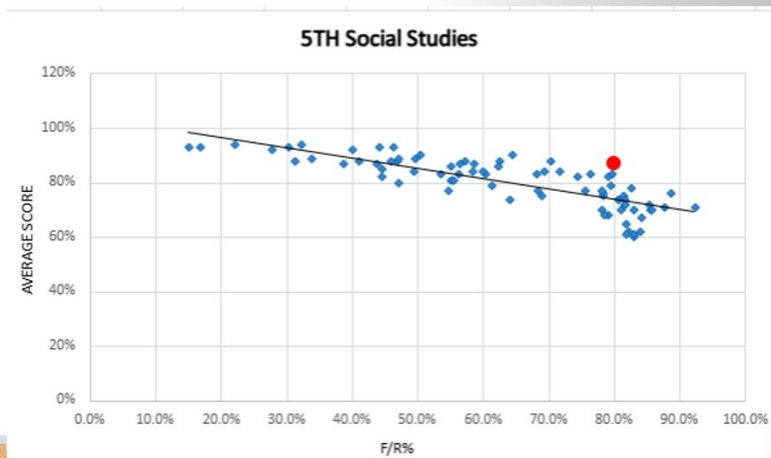
1st Semester Data

5TH MATH

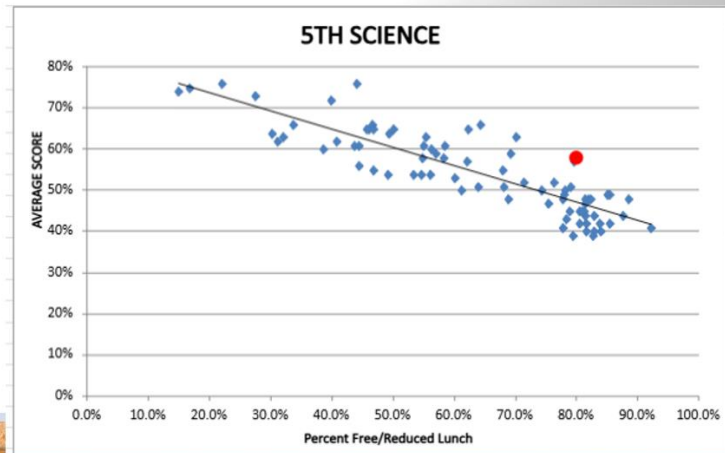


1st Semester Data

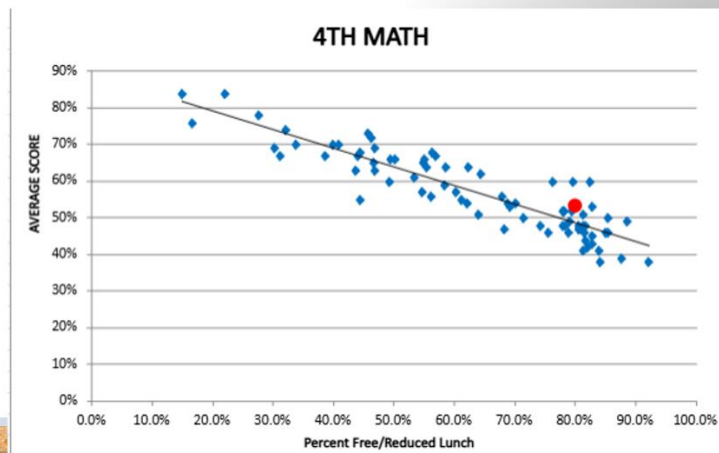
5TH Social Studies



1st Semester Data

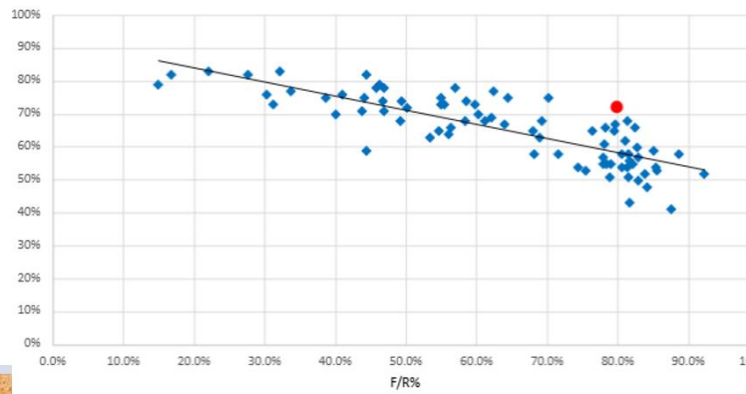


1st Semester Data



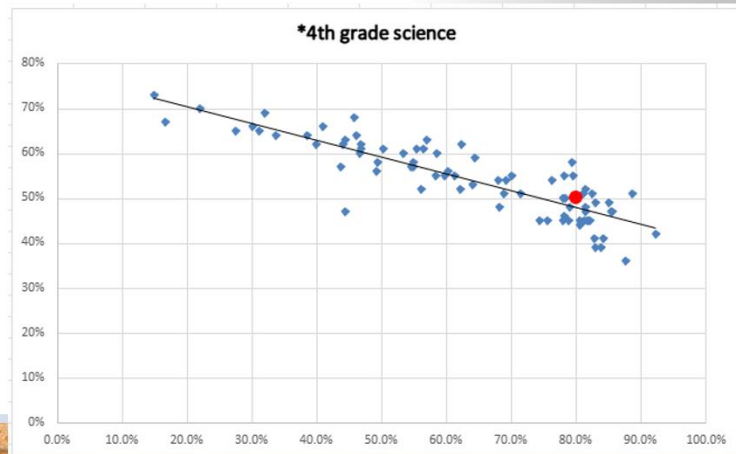
Ist Semester Data

4TH SOCIAL STUDIES

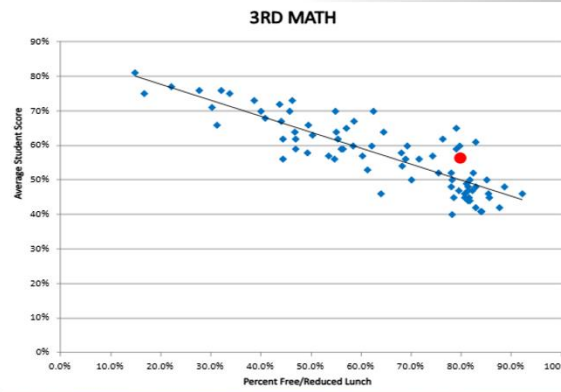


Ist Semester Data

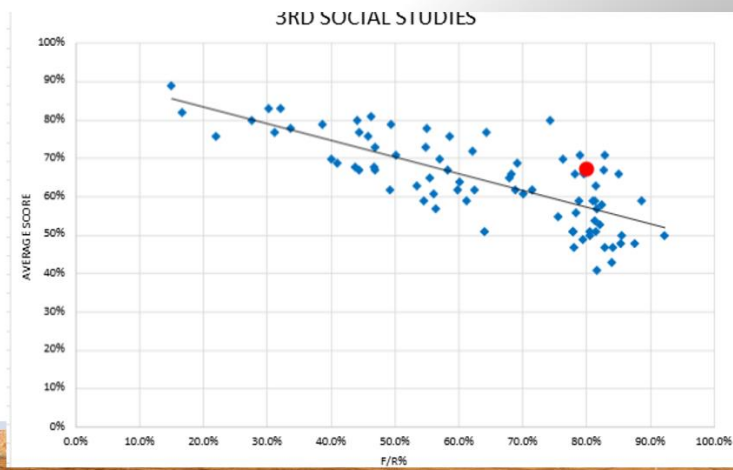
*4th grade science

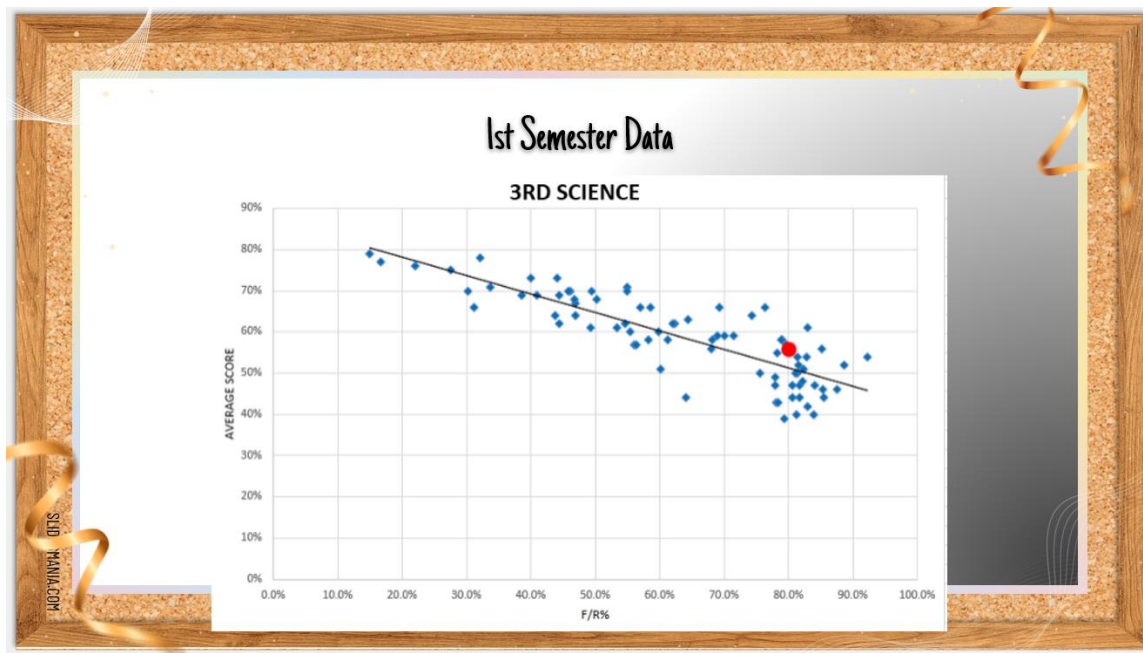


Ist Semester Data



Ist Semester Data





Nuts and Bolts

- **Staffing and enrollment**

We are in the transfer process season. We have received our points for next school year. The allotment tells us the amount of teachers we can hire. The number of teachers and staff we can hire is based on our enrollment. The allotment predicts our enrollment each year.

We are decreasing in our enrollment again next year. We've been on a trend on getting 20 to 30 students less each year. Most of our communities are homes. We only have 1 apartment complex and 1 trailer park that has some transition but other than that, most of them are homes. What does that look like for Bethesda? We are fortunate that we are a Title I school. Title I bring us almost \$500,000 a year. Most of that money is used to hire additional teachers. Anything that is left from that, we put into resources for the school. Resources such as smartboards. We have smartboards in every classroom to help with collaboration. Our teachers get release days. They get half day planning each semester, where they get together for a half a day and plan for their next 9 weeks. Teachers also have Collaborative Planning Days one Saturday each month.

We are adding an additional 5th grade teacher. This helps with keeping our class size small. We have been very fortunate we don't have much of a turnover here at Bethesda. Our goal is to keep our teachers. Consistency brings progress.

Ms. Liverpool asked if we have seen an increase in withdrawals to pull students out of public schools due to several articles regarding school choices.

Ms. Rojo responded that after the Apalachee HS incident, there were a couple of families that have withdrawn their students to go to online school. However, some of those students have returned to Bethesda.

Ms. Larmond commented that we are glad families have that option to do home-schooling.

A member asked if the county has considered the growth of the area. Ms. Larmond responded there are 2 new subdivisions being built but they won't be ready until the following school year. If the number of our enrollment increases, then we will have to wait until October 1(FTE deadline) and the county will determine if we can receive additional points.

Ms. Liverpool asked since we are a DLI school, if that is factored in. Ms. Larmond responded our school calculations aren't calculated on DLI or non-DLI classes, therefore it's based on a whole grade level. We have 4 DLI classrooms per grade level. The remaining non-DLI classrooms have a higher number of students. DLI classes in the upper grades have lower number of students due to families withdrawing, because they have moved out of the area.

Ms. Larmond wanted to make parents aware of the recent situation that occurred at our school. We sent a notification home via Parent Square mentioning that we had a student that was showing off his airsoft gun to other students in the classroom. He was not threatening anyone with it. The students did exactly what they were supposed to do, they let their teacher know. The teacher contacted the Administration team. Administration went to the classroom, brought him to the front office, search his backpack, found the airsoft gun and contacted the SRO. SRO came and confiscated the airsoft gun.

We had a conversation with the student and let him know that, yes, this is not a real gun, but you can't bring it to school. Student received disciplinary action. Parent was contacted.

- **EES Parent Survey/Georgia Health Survey**

We encourage parents to please complete this survey.

Upcoming Important Dates

- **February 13-17-No School**
- **February 27-BHM Program 5:30 PM**
- **March 5 & 6-12 Noon Dismissal-Early Release/Parent-Teacher Conferences**
- **March 3-7-Read Across America**
- **March 14-DLD**
- **March 20-Literacy/Arts Night**

Open Floor: Questions, Comments, Concerns

Local School Meeting Dates:

April 2, 2025 8:30 am Bethesda Elementary

Thank you for your support!

Meeting Adjourned

Local School Council Minutes will be posted on the school's website.