



ENROLLMENT PROJECTIONS REPORT BY BOUNDARY OF RESIDENCE

WORTHINGTON SCHOOLS

DECEMBER 30, 2024



WOOLPERT

TABLE OF CONTENTS

SECTION	PAGE
ACKNOWLEDGEMENTS	2
EXECUTIVE SUMMARY	3
ENROLLMENT PROJECTION METHODOLOGY	5
U.S. CENSUS	7
GENERAL DEMOGRAPHICS	19
ESTIMATED SCHOOL-AGED POPULATION CHANGE	20
HOUSING DATA	22
RESIDENT LIVE BIRTH DATA	24
SURVIVAL RATIOS	26
HISTORICAL ENROLLMENT	27
PROJECTED ENROLLMENT	29
ENROLLMENT BY BOUNDARY OF RESIDENCE	38
CONCLUSION	94
APPENDIX A: BOUNDARY MAPS	A1
APPENDIX B: FEEDER FLOWCHART	B1
APPENDIX C: LIVE/ATTEND ANALYSIS	C1
APPENDIX D: DENSITY MAPS	D1

ACKNOWLEDGMENTS

On behalf of Woolpert, we would like to extend our appreciation to the Worthington Schools for the opportunity to assist them in developing this Enrollment Projections Report which includes projections by boundary of residence. As a planning team, we hope that this document will serve the Worthington Schools for years to come.

WOOLPERT

Ann Hoffsis, REFP, Vice-President, Program Director | Strategic Consulting
Galina Lyogky, Project Coordinator II
Cynthia Casarez, Project Coordinator I

One Easton Oval, Suite 400
Columbus, OH 43219

P. 614.798.8828

www.coopstrategies.com

EXECUTIVE SUMMARY

The enrollment projections by boundary of residence for the Worthington Schools included in this report were developed using the cohort survival methodology and Woolpert’s custom enrollment projection software, S.T.E.P. [Student Trends & Enrollment Projections]. This custom software was developed in collaboration with The Ohio State University and is based on industry best practices as well as the national experience Woolpert has with schools, school districts, and state agencies.

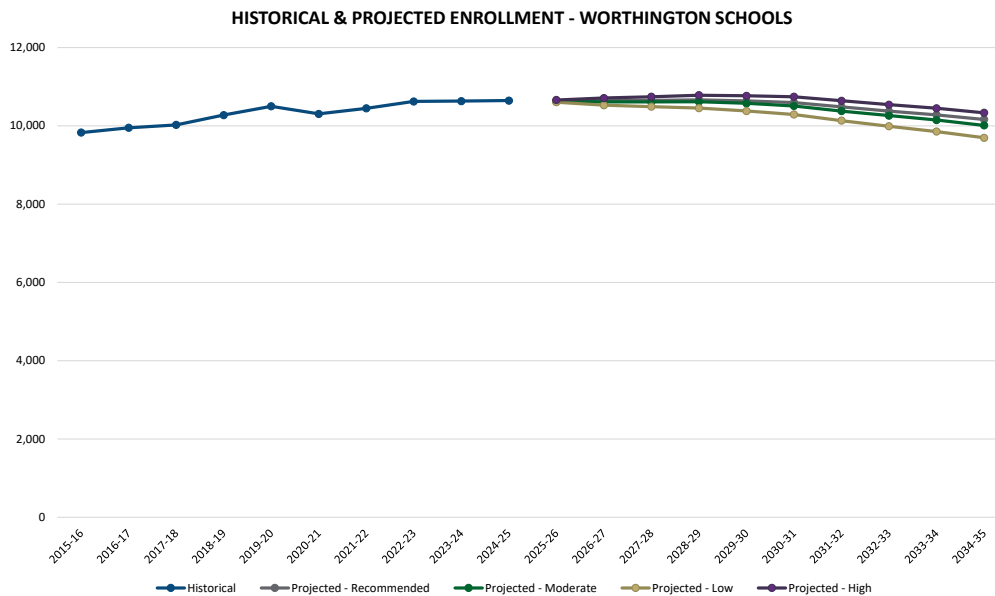


The Worthington Schools serves 10,647 students in 1 pre-school, 11 elementary schools, 5 middle schools, 2 high schools, and 2 alternative schools in the 2024-25 school year.

The projections presented in this report were developed based on students *living within* the current elementary school boundaries and are meant to serve as a planning tool for the future, representing the most likely direction of the District. Enrollment projections were developed using the cohort survival methodology and by analyzing the following data outlined in this report:

- Historical enrollment by elementary school boundary, by grade, by year
- Resident live birth data
- Census data
- Building permits

Enrollment in the Worthington Schools has increased by 816 students from the 2015-16 to the 2024-25 school year. Based on the cohort survival methodology, enrollment is projected to decrease over the next ten years.



As with any projection, the District should pay close attention to the variables associated with determining enrollment projections discussed in this document. Any one or more of these factors can increase or decrease enrollment within the Worthington Schools. When projecting future enrollments, it is vital to track the number of live births, the amount of new housing activity, and the change in household composition. It is recommended that the data contained in this report should be reviewed on an annual basis to determine how more recent trends and any new housing development will impact the enrollment. In addition, any of the following factors could cause a significant change in projected student enrollment:

- Boundary adjustments
- New school openings
- School closures
- Changes / additions in program offerings
- Preschool programs
- Policy Changes
- Changes in grade configuration
- Interest rates / unemployment shifts
- Intra- and inter-District transfers
- Magnet / charter / private school openings or closures
- Zoning changes
- Annexations
- Unplanned new housing activity
- Planned, but not built, housing
- School voucher programs
- Transportation policy changes
- Pandemics

Obviously, certain factors can be gauged and planned for far better than others. For instance, it may be relatively straightforward to gather housing data from local builders regarding the total number of lots in a planned subdivision and calculate the potential student yield. However, planning for changes in the unemployment rate, and how these may either boost or reduce public school enrollment, proves to be more difficult. In any case, it is essential to gather a wide variety of information in preparation for producing enrollment projections.

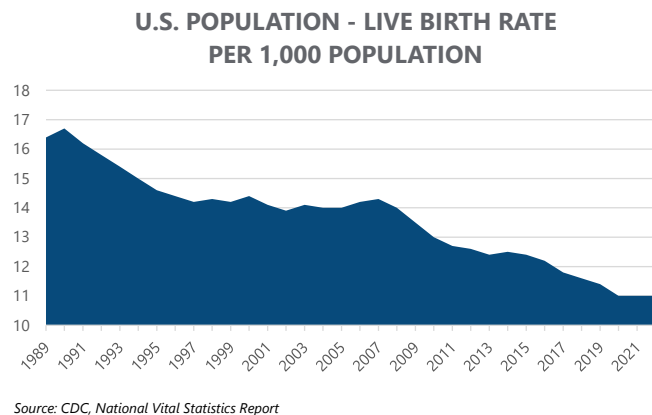
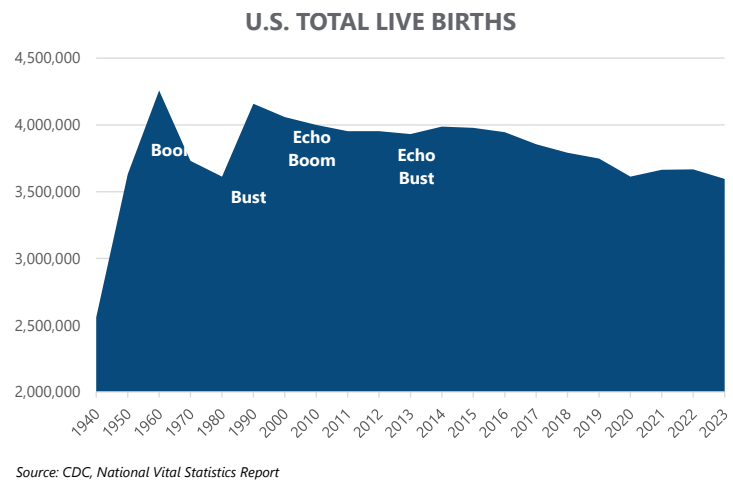
When looking ahead at a school district's enrollment over the next two, five, or ten years, it is helpful to approach the process from a global perspective. For example: How many new homes have been constructed each year? How many births have occurred each year in relation to the resident population? Is housing experiencing a turnover—if so, what is the composition of families moving in/out? Are more or less students attending private school or being home-schooled? What has the unemployment rate trend been over the past ten years? What new educational policies are in place that could affect student enrollment figures?

The cohort survival methodology is a standard methodology used throughout the educational planning industry to project enrollment. The enrollment projections developed for the Worthington Schools were developed using the cohort survival method.

ENROLLMENT PROJECTION METHODOLOGY

Introduction

Tracing the landscape of the country’s public school enrollment back over the past fifty years reveals demographic, economic, and social changes. The United States as a whole continues to undergo major shifts in public student enrollment, due in large part to past events including the baby boom, the availability and use of birth control, and the development of suburbs. The baby boom of the late 1940s and 50s was followed by the baby bust of the 1960s and 70s. This gave rise to the echo baby boom of the 1980s.

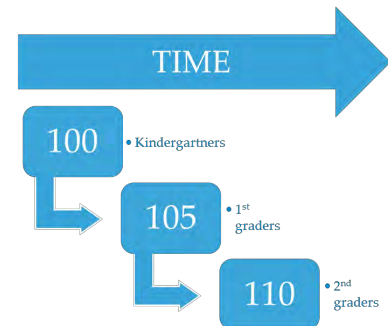


Nationwide, districts have experienced the effects of the echo baby bust of the 1990s. From the 1950s to the 1970s, a dramatic downsizing of the family unit occurred. A direct result was the declining school enrollment of the 1970s and 1980s. As of the 2010 Census, the size of a family was at an all-time low of 3.14 persons. The live birth rate increased for the first time in several years in 1998 and increased again in 2000 and 2006. However, the birth rate resumed a descending pattern in 2008 and reached an all-time low of 10.9 (per 1,000) in 2020 and remained at 11.0 through 2022.

Cohort Survival Method

The cohort survival methodology (sometimes referred to as the grade progression ratio method) is a widely used enrollment projection model that is used by many school districts and state and federal agencies to project K-12 enrollment.

A cohort is a group of persons [in this case, students]. The cohort survival enrollment projection methodology uses historic live birth data and historic student enrollment to “age” a known population or cohort throughout the school grades. For instance, a cohort begins when a group of kindergarteners enrolls in grade K and moves to first grade the following year, second grade the next year, and so on.



A “survival ratio” is developed to track how this group of students increased or decreased in number as they moved through the grade levels. By developing survival ratios for each grade transition [i.e. 2nd to 3rd grade] over a ten year period of time, patterns emerge. A projection ratio for each grade transition is developed based on analysis of the survival ratios. The projection ratios are used as a multiplier in determining future enrollment.

For example, if student enrollment has consistently increased from the 8th to the 9th grade over the past ten years, the survival ratio would be greater than 100% and could be multiplied by the current 8th grade enrollment to develop a projection for next year’s 9th grade. This methodology can be carried through to develop ten years of projection figures. Because there is not a grade cohort to follow for students coming into kindergarten, resident live birth counts are used to develop a birth-to-kindergarten survival ratio. Babies born five years previous to the kindergarten class are compared in number, and a ratio can be developed to project future kindergarten enrollments.

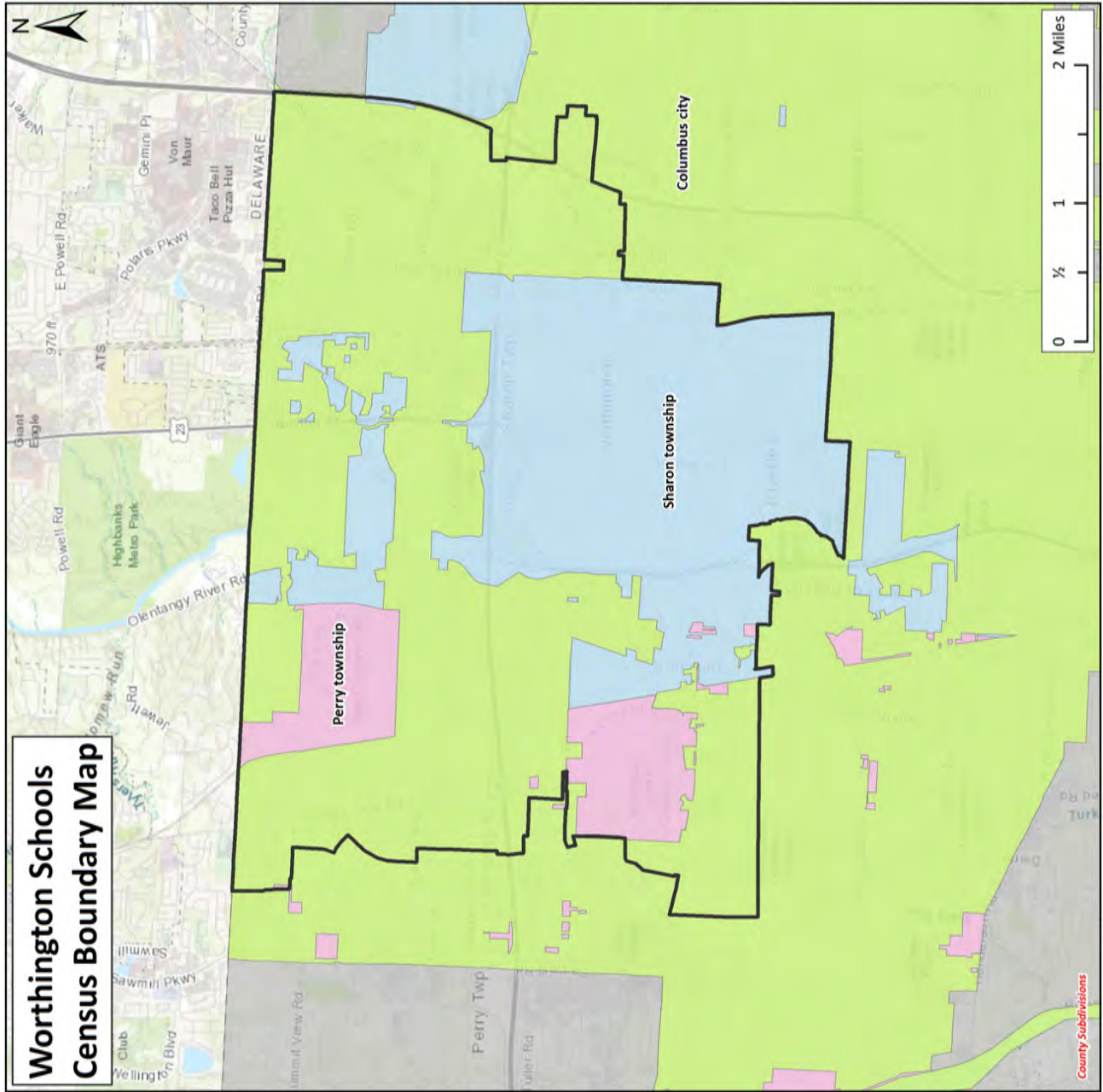
The cohort survival method is useful in areas where population is stable [relatively flat, growing steadily, or declining steadily], and where there have been no significant fluctuations in enrollment, births, and housing patterns from year to year. The cohort survival methodology inherently considers the net effects of factors such as migration, housing, dropouts, transfers to and from charter schools, open enrollment, and deaths. This methodology does not assume changes in policies, program offerings, or future changes in housing and migration patterns.

U.S. CENSUS

This section presents data from the United States Census Bureau and estimates from the American Community Survey (ACS) to demonstrate the demographic characteristics and historic trends of the population within the District boundary. While the Census is conducted every 10 years, the American Community Survey collects social, housing, educational, occupational, financial, and other demographic data from over 3.5 million households throughout the nation monthly and is compiled yearly, as mandated by the U.S. Constitution. This data helps public officials, federal/state/local agencies, school districts, etc. assess historic trends and plan for the future.

The Worthington Schools is located in Franklin County, Ohio. It serves parts or all of the following localities: Columbus city, Perry township, Sharon township, Riverlea village, and Worthington city. The data on the following pages is aggregated and color-coordinated by the boundaries shown in the map on the following page.

It should be noted that the District does not necessarily serve whole localities but data presented by locality is for the whole locality.



This map shows the census boundaries used to delineate areas served by the District. It should be noted that the boundaries of cities/townships/villages may vary across the years as population and commercial activity fluctuate.

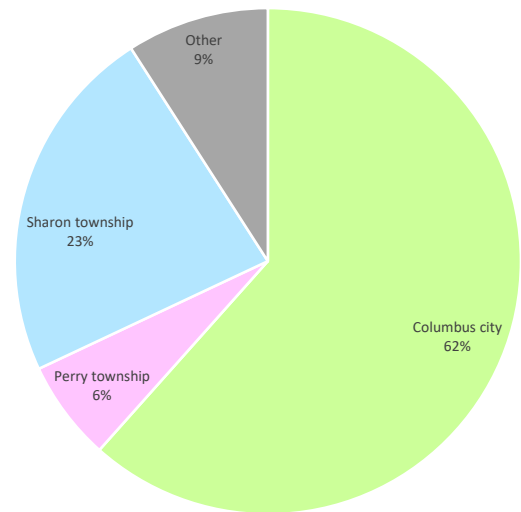
Students by Locality

The table and pie charts below show how many Worthington Schools students live in the District boundary and each locality served by the District, by year, according to 2024-25 student data. The percentages for each locality are based on the total students in the Worthington Schools. The total at the bottom of the table indicates the total number of students in the District, not the sum of the values in the table.

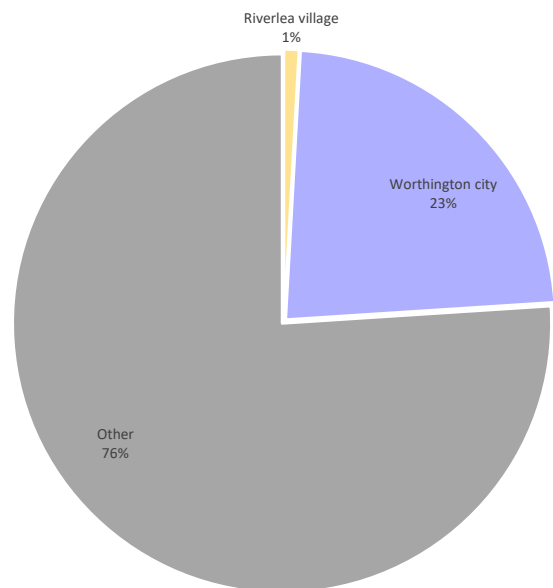
Distribution of Students in Census County Subdivisions

Enrollment by Census Locality	2024-25
Worthington Schools Boundary	10,647 99.9%
Franklin County	10,659 100.0%
County Subdivisions	
Columbus city	7,220 67.7%
Perry township	752 7.1%
Sharon township	2,684 25.2%
Places	
Riverlea village	94 0.9%
Worthington city	2,462 23.1%
Total Students*	10,661

Source: Worthington Schools Student Data
 *This total reflects the amount of District students, not a total of the values in the table.



Distribution of Students in Census Places



***Other includes students living outside of the District boundary and in localities not shown in the map on the previous page and table above*

Population

According to the 2020 Census, since the 2010 Census, the total population and median age increased in the District boundary.

Based on the 2020 Census, since the 2010 Census, the number of children under the age of 5 has increased by 10 percent, the number of children ages 5 - 19 has increased by 13 percent, the number of adults ages 20 - 64 has increased by 6 percent, and the number of adults ages 65 and over has increased by 54 percent in the District boundary.

The 2000, 2010, and 2020 population counts are shown in the table below.

Population		Under 5 years	5 to 19 years	20 to 64 years	65 years and over	Total Population	Median Age
Worthington Schools Boundary	2000**	-	-	-	-	-	-
	2010	4,097	11,622	37,653	6,002	59,374	36.3
	2020	4,525	13,099	39,962	9,253	66,839	36.7
	Trend	↗	↗	↗	↗	↗	↗
Franklin County	2000	76,916	223,967	663,811	104,284	1,068,978	32.5
	2010	83,117	231,538	733,053	115,706	1,163,414	33.4
	2020	85,902	251,819	817,727	168,359	1,323,807	34.2
	Trend	↗	↗	↗	↗	↗	↗
Columbus city	2000	51,496	141,540	446,569	62,475	702,080	30.7
	2010	58,295	145,222	499,670	66,935	770,122	31.3
	2020	58,206	157,937	566,232	97,954	880,329	32.4
	Trend	↔	↗	↗	↗	↗	↗
Perry township	2000	205	975	2,570	437	4,187	40.3
	2010	213	795	2,012	617	3,637	44.6
	2020	318	898	2,062	651	3,929	40.3
	Trend	↗	↔	↔	↗	↗	↔
Sharon township	2000	913	3,237	9,467	2,939	16,556	44.1
	2010	956	2,890	9,070	3,053	15,969	45.2
	2020	1,089	3,349	9,045	3,685	17,168	42.5
	Trend	↗	↗	↔	↗	↗	↔
Riverlea village	2000	27	72	307	95	501	47.2
	2010	30	125	304	86	545	44.5
	2020	39	131	316	113	599	44.9
	Trend	↗	↗	↔	↗	↗	↔
Worthington city	2000	785	2,860	8,110	2,565	14,320	43.9
	2010	840	2,529	7,615	2,591	13,575	44.9
	2020	948	2,975	7,684	3,179	14,786	42.1
	Trend	↗	↔	↔	↗	↗	↔

Source: U.S. Census (**data not available)

Race / Ethnicity & Language

The table below shows race and ethnic distribution throughout the Worthington Schools boundary and the localities that are served by the District.

Race & Ethnicity		White alone	Black or African American alone	American Indian and Alaska Native alone	Asian alone	Native Hawaiian and Other Pacific Islander alone	Some other race alone	Two or more races	Total Population	Hispanic Population
Worthington Schools Boundary	2000**	-	-	-	-	-	-	-	-	-
	2010	83.6%	6.0%	0.1%	6.3%	0.0%	1.6%	2.4%	59,374	4.2%
	2020	74.9%	7.9%	0.3%	6.8%	0.0%	2.8%	7.2%	66,839	5.8%
Franklin County	2000	75.5%	17.6%	0.3%	3.1%	0.0%	0.9%	2.5%	1,068,978	2.3%
	2010	69.2%	21.2%	0.2%	3.9%	0.1%	2.3%	3.0%	1,163,414	4.8%
	2020	60.6%	22.6%	0.3%	5.6%	0.0%	3.7%	7.0%	1,323,807	6.9%
Columbus city	2000	67.9%	24.3%	0.4%	3.5%	0.0%	1.0%	3.0%	702,080	2.5%
	2010	61.4%	28.1%	0.3%	4.0%	0.1%	2.9%	3.3%	770,122	5.7%
	2020	53.4%	28.8%	0.4%	5.8%	0.0%	4.3%	7.2%	880,329	7.8%
Perry township	2000	93.9%	1.1%	0.2%	2.6%	0.0%	0.2%	2.0%	4,187	1.2%
	2010	93.6%	1.6%	0.0%	2.6%	0.0%	0.5%	1.8%	3,637	1.8%
	2020	89.9%	1.0%	0.1%	2.4%	0.0%	0.9%	5.7%	3,929	2.7%
Sharon township	2000	93.5%	2.2%	0.1%	3.1%	0.0%	0.2%	0.9%	16,556	0.9%
	2010	92.9%	2.4%	0.1%	2.3%	0.0%	0.4%	1.9%	15,969	1.7%
	2020	88.1%	2.9%	0.1%	2.3%	0.0%	0.8%	5.7%	17,168	2.3%
Riverlea village	2000	97.8%	0.0%	0.8%	0.8%	0.0%	0.0%	0.6%	501	1.4%
	2010	97.1%	0.4%	0.2%	1.5%	0.0%	0.0%	0.9%	545	0.6%
	2020	91.2%	0.3%	0.3%	1.7%	0.0%	0.3%	6.2%	599	1.3%
Worthington city	2000	93.3%	1.9%	0.1%	3.4%	0.1%	0.2%	1.0%	14,320	1.0%
	2010	93.0%	2.2%	0.0%	2.3%	0.0%	0.5%	2.0%	13,575	1.7%
	2020	88.2%	3.0%	0.1%	2.3%	0.0%	0.9%	5.5%	14,786	2.4%

Source: U.S. Census (**data not available)

According to the 2023 ACS estimates, approximately 14% of the population in the District boundary speaks a language other than English; the most prominently-spoken language besides English is Spanish. The table below shows the languages spoken at home.

Languages Spoken at Home (2023 Estimates)	Worthington Schools Boundary	Franklin County	Columbus city	Perry township	Sharon township	Riverlea village	Worthington city
Population 5 years and over	62,502	1,233,493	821,837	3,598	15,808	537	13,682
Speak only English	86.1%	84.1%	81.9%	94.5%	96.3%	98.9%	96.1%
Speak a language other than English	13.9%	15.9%	18.1%	6%	3.7%	1.1%	3.9%
Spanish	2,847	59,884	47,017	40	165	0	155
5 - 17 years old	635	14,244	11,169	0	19	0	19
18 - 64 years old	2,139	42,894	34,007	40	127	0	117
65 years old and over	73	2,746	1,841	0	19	0	19
Other Indo-European languages	1,768	46,657	34,318	59	276	6	239
5 - 17 years old	194	6,542	4,769	14	15	0	15
18 - 64 years old	1,199	35,282	26,495	31	139	3	115
65 years old and over	375	4,833	3,054	14	122	3	109
Asian and Pacific Island languages	2,239	32,045	20,541	99	106	0	106
5 - 17 years old	136	3,451	1,339	40	0	0	0
18 - 64 years old	1,691	25,198	16,976	47	58	0	58
65 years old and over	412	3,396	2,226	12	48	0	48
Other languages	1,848	57,580	47,103	0	31	0	31
5 - 17 years old	546	12,863	10,242	0	0	0	0
18 - 64 years old	1,238	41,966	34,615	0	26	0	26
65 years old and over	64	2,751	2,246	0	5	0	5

Source: American Community Survey 5-Year Estimates (2023)

Households, Families, & Housing

According to the 2023 ACS estimates, approximately 71% of the homes in the Worthington Schools boundary are single-unit structures while 29% of the homes are 2-or-more-unit structures. Nearly 33% of the District boundary’s households have at least one school-aged (or younger) child in them.

Households (2023 Estimates)	Worthington Schools Boundary	Franklin County	Columbus city	Perry township	Sharon township	Riverlea village	Worthington city
Total Households	27,562	547,922	376,223	1,258	7,028	221	6,064
1-unit structures	71.4%	63.9%	56.7%	100.0%	88.2%	95.5%	86.4%
2-or-more-unit structures	28.5%	35.0%	42.4%	0.0%	11.8%	4.5%	13.6%
Mobile homes and all other types	0.1%	1.1%	0.9%	0.0%	0.0%	0.0%	0.0%
Owner occupied:	62.2%	53.0%	44.4%	97.6%	83.2%	92.8%	82.9%
Renter occupied:	37.8%	47.0%	55.6%	2.4%	16.8%	7.2%	17.1%
Households with one or more people under 18 years	33.2%	29.6%	26.9%	46.1%	32.9%	39.4%	33.4%

Source: American Community Survey 5-Year Estimates (2023)

According to the U.S. Census Bureau, “A family is a group of two people or more (one of whom is the householder) related by birth, marriage, or adoption and residing together.”

A household consists of all persons (related and unrelated) living within a housing unit.

A housing unit is a single room, house, apartment, or other group of residential rooms that have direct outside access; group quarters are excluded.

According to the 2023 ACS Estimates, the average family size has increased in the District boundary while the average household size has decreased.

From the 2010 Census to the 2020 Census, the number of occupied and vacant housing units in the District boundary has increased in tandem with the number of total housing units.

Family/Household Size		Average Family Size	Average Household Size
Worthington Schools Boundary	2000**	-	-
	2010	2.98	2.43
	2023*	3.10	2.42
	Trend	↗	↘
Franklin County	2000	3.03	2.39
	2010	3.05	2.38
	2023*	3.06	2.36
	Trend	↗	↘
Columbus city	2000	3.00	2.30
	2010	3.04	2.31
	2023*	3.05	2.28
	Trend	↗	↘
Perry township	2000	3.04	2.74
	2010	3.00	2.72
	2023*	3.20	3.06
	Trend	↗	↗
Sharon township	2000	2.90	2.40
	2010	2.86	2.33
	2023*	2.98	2.39
	Trend	↗	↘
Riverlea village	2000	2.70	2.18
	2010	2.92	2.47
	2023*	3.06	2.50
	Trend	↗	↗
Worthington city	2000	2.92	2.42
	2010	2.88	2.35
	2023*	2.98	2.39
	Trend	↗	↘

Source: U.S. Census (2020 Census data not available)

*Source: American Community Survey 5-Year Estimates 2022

**data not available

Housing Occupancy		Total housing units	Occupied housing units	Vacant housing units
Worthington Schools Boundary	2000**	-	-	-
	2010	25,463	24,228	1,235
	2020	28,017	26,688	1,329
	Trend	↗	↗	↗
Franklin County	2000	471,016	438,778	32,238
	2010	527,186	477,235	49,951
	2020	580,903	540,369	40,534
	Trend	↗	↗	↗
Columbus city	2000	323,492	298,082	25,410
	2010	363,756	324,871	38,885
	2020	404,265	371,671	32,594
	Trend	↗	↗	↗
Perry township	2000	1,512	1,494	18
	2010	1,376	1,335	41
	2020	1,355	1,322	33
	Trend	↘	↘	↘
Sharon township	2000	6,887	6,689	198
	2010	7,081	6,767	314
	2020	7,208	6,903	305
	Trend	↗	↗	↗
Riverlea village	2000	243	233	10
	2010	236	221	15
	2020	241	232	9
	Trend	↘	↘	↘
Worthington city	2000	5,875	5,731	144
	2010	5,940	5,691	249
	2020	6,119	5,866	253
	Trend	↗	↗	↗

Source: U.S. Census

**data not available

Industry & Occupation

The table below illustrates the types of industry and occupation categories in the Worthington Schools boundary and the localities it serves. 2023 estimates are calculated for the civilian employed population 16 years and over.

Industry & Occupation Categories for the Civilian Employed Population 16 Years and Over, (2023 Estimates)	Worthington Schools Boundary	Franklin County	Columbus city	Perry township	Sharon township	Riverlea village	Worthington city
Total population	67,470	1,321,635	880,622	3,847	17,021	553	14,754
Civilian employed population, 16 years and over	36,804	695,916	470,800	1,887	8,422	278	7,200
Industry Categories							
Agriculture, forestry, fishing and hunting, and mining	0.2%	0.3%	0.2%	0.0%	0.4%	0.7%	0.5%
Construction	4.1%	4.7%	4.7%	5.8%	3.6%	1.1%	2.4%
Manufacturing	6.7%	7.5%	7.6%	7.9%	5.7%	11.5%	5.7%
Wholesale trade	2.3%	2.5%	2.2%	8.6%	3.1%	3.2%	3.2%
Retail trade	8.3%	11.1%	11.5%	4.0%	8.5%	4.0%	9.0%
Transportation and warehousing, and utilities	3.8%	7.6%	8.1%	1.6%	4.4%	2.5%	4.1%
Information	2.4%	1.9%	2.0%	1.4%	1.9%	2.5%	2.1%
Finance and insurance, and real estate and rental and leasing	11.7%	9.5%	8.8%	13.6%	8.9%	7.6%	8.9%
Professional, scientific, and management, and administrative and waste management services	16.5%	12.9%	12.6%	16.9%	17.3%	20.9%	16.9%
Educational services, and health care and social assistance	25.6%	25.0%	24.8%	29.4%	30.1%	29.9%	30.7%
Arts, entertainment, and recreation, and accommodation and food services	9.6%	8.8%	9.5%	4.9%	7.0%	6.8%	7.2%
Other services, except public administration	5.1%	4.0%	4.0%	3.8%	5.1%	4.3%	5.6%
Public administration	3.6%	4.3%	4.0%	2.0%	4.0%	5.0%	3.9%
Occupation Categories							
Management, business, science, and arts occupations	57.6%	46.7%	43.6%	65.6%	65.7%	80.2%	66.8%
Service occupations	13.1%	14.9%	16.4%	9.3%	8.5%	5.8%	8.4%
Sales and office occupations	19.9%	19.8%	20.1%	18.4%	19.4%	12.6%	19.4%
Natural resources, construction, and maintenance occupations	2.7%	5.1%	5.2%	3.8%	2.0%	0.0%	1.9%
Production, transportation, and material moving occupations	6.7%	13.5%	14.7%	2.9%	4.4%	1.4%	3.5%

Source: American Community Survey 5-Year Estimates (2023)

Financial Status

According to the U.S. Census Bureau, earnings come from a job (salary/wages) while income also includes payments such as “Social Security, pensions, child support, public assistance, annuities, money derived from rental properties, interest and dividends.” The table below shows income, earnings, poverty status, and unemployment rate in the ACS 2023 estimates.

Financial Status (2023 Estimates)	Worthington Schools Boundary	Franklin County	Columbus city	Perry township	Sharon township	Riverlea village	Worthington city
Earnings							
Population 16 years and over with earnings	39,873	766,852	522,499	2,162	9,262	303	7,924
Full-time, year-round workers with earnings	27,960	508,966	341,004	1,494	6,398	199	5,512
\$1 to \$9,999 or less	0.7%	1.1%	1.2%	1.4%	0.2%	0.0%	0.2%
\$10,000 to \$14,999	1.6%	1.7%	1.9%	0.7%	0.3%	0.0%	0.3%
\$15,000 to \$24,999	2.4%	5.3%	6.2%	1.6%	1.0%	3.0%	1.1%
\$25,000 to \$34,999	7.3%	10.3%	11.9%	2.5%	3.9%	1.0%	3.8%
\$35,000 to \$49,999	13.9%	19.8%	22.1%	8.2%	7.8%	8.0%	7.3%
\$50,000 to \$64,999	16.1%	16.5%	17.3%	6.8%	9.7%	3.0%	9.6%
\$65,000 to \$74,999	9.3%	9.3%	9.7%	7.6%	8.7%	11.6%	8.9%
\$75,000 to \$99,999	15.9%	14.7%	13.9%	18.8%	18.8%	11.6%	19.3%
\$100,000 or more	32.9%	21.4%	15.7%	52.3%	49.6%	61.8%	49.5%
Median Earnings	\$58,094	\$45,288	\$41,552	\$75,462	\$76,239	\$84,554	\$76,650
Household Income							
Total Households	27,562	547,922	376,223	1,258	7,028	221	6,064
Less than \$10,000	2.1%	4.8%	5.7%	0.0%	2.0%	0.0%	2.4%
\$10,000 to \$14,999	1.9%	3.6%	4.4%	0.0%	0.9%	0.0%	0.9%
\$15,000 to \$24,999	2.9%	6.3%	7.2%	0.0%	3.1%	2.7%	3.3%
\$25,000 to \$34,999	4.4%	6.9%	7.5%	0.0%	3.5%	3.6%	2.3%
\$35,000 to \$49,999	8.8%	11.8%	13.4%	2.5%	8.5%	3.6%	8.7%
\$50,000 to \$74,999	14.1%	17.2%	18.6%	5.1%	7.9%	11.3%	8.1%
\$75,000 to \$99,999	14.4%	13.1%	13.4%	7.2%	13.8%	10.9%	14.4%
\$100,000 to \$149,999	21.1%	17.2%	16.4%	18.5%	19.1%	15.4%	18.8%
\$150,000 to \$199,999	13.6%	8.6%	7.1%	26.6%	12.4%	15.8%	13.2%
\$200,000 or more	16.7%	10.5%	6.3%	40.2%	28.6%	36.7%	27.9%
Median income (dollars)	\$103,076	\$73,795	\$64,817	\$183,462	\$124,734	\$155,313	\$124,734
Poverty Status							
% below poverty level	6.8%	14.5%	18.1%	0.0%	2.8%	1.5%	2.9%
Under 18 years	8.7%	20.1%	26.1%	0.0%	1.7%	0.0%	1.7%
18 to 64 years	6.5%	13.5%	16.3%	0.0%	2.4%	1.4%	2.7%
65 years and over	4.7%	9.5%	12.2%	0.0%	5.3%	3.8%	5.1%
Unemployment Rate							
Population 20 to 64 years	2.7%	4.2%	4.7%	3.7%	4.0%	2.0%	4.3%

Source: American Community Survey 5-Year Estimates (2023)

Computer / Internet Access

The table below shows the presence of a computer and/or internet subscription in households in the localities served by the District, according the 2023 ACS estimates. Percentages shown are based on total households.

% of Total Households with Internet/Computers (2023 Estimates)	Worthington Schools Boundary	Franklin County	Columbus city	Perry township	Sharon township	Riverlea village	Worthington city
Has a Computer	98.1%	96.6%	96.3%	100.0%	95.1%	100.0%	94.5%
Has an Internet subscription	96.9%	92.6%	91.8%	100.0%	93.6%	96.4%	92.9%
Has no Internet Subscription	1.2%	3.9%	4.4%	0.0%	1.5%	3.6%	1.6%
Has no Computer	1.9%	3.4%	3.7%	0.0%	4.9%	0.0%	5.5%

Source: American Community Survey 5-Year Estimates (2023)

School Enrollment

The tables below summarize the percentage of the population living within the Worthington Schools boundary, by age group, enrolled in school; enrolled in school and attending public school; and enrolled in school and attending private school, based on U.S. Census American Community Survey (ACS) 5-Year Estimates. Home-schooled children are counted in the private school data; the ACS does not distinguish between charter and non-charter schools. If anyone in these age groups had not attended any school in the 3 months before the survey was conducted, they were considered to not be enrolled in any school.

It should be noted that this data is not a survey of the students attending schools in the District; rather, it is based on monthly surveys sent out by the ACS to households in the District boundary. This survey data is then used to create the estimates shown in the tables below.

WORTHINGTON SCHOOLS BOUNDARY
% OF AGE GROUP ENROLLED IN SCHOOL

Age Group	2015	2016	2017	2018	2019	2020	2021	2022	2023	Trend
3-4	48.1%	50.5%	54.8%	55.7%	57.7%	57.8%	52.9%	56.9%	59.7%	
5-9	95.2%	96.1%	96.6%	96.1%	97.0%	93.8%	92.7%	91.6%	90.8%	
10-14	98.6%	99.2%	99.3%	99.5%	100.0%	94.0%	98.7%	97.7%	98.0%	
15-17	97.6%	99.0%	98.8%	99.0%	99.2%	99.5%	99.0%	99.3%	99.0%	
18-19	76.2%	73.6%	71.0%	73.0%	82.5%	87.1%	75.4%	78.4%	76.0%	

Source: U.S. Census American Community Survey 5-Year Estimates 2015, 2016, 2017, 2018, 2019, 2020, 2021, 2022, 2023

WORTHINGTON SCHOOLS BOUNDARY
% OF AGE GROUP ENROLLED IN SCHOOL ATTENDING PUBLIC SCHOOL

Age Group	2015	2016	2017	2018	2019	2020	2021	2022	2023	Trend
3-4	38.1%	36.5%	41.9%	45.7%	44.9%	50.5%	58.7%	49.2%	49.7%	
5-9	83.4%	82.3%	85.1%	86.8%	87.1%	84.4%	84.4%	83.5%	84.8%	
10-14	86.9%	87.3%	89.9%	93.9%	94.7%	90.9%	91.2%	90.6%	91.0%	
15-17	88.3%	87.6%	89.6%	91.4%	92.7%	91.3%	90.8%	91.0%	89.1%	
18-19	84.0%	84.5%	81.8%	88.2%	89.8%	92.2%	88.7%	87.5%	86.9%	

Source: U.S. Census American Community Survey 5-Year Estimates 2015, 2016, 2017, 2018, 2019, 2020, 2021, 2022, 2023

WORTHINGTON SCHOOLS BOUNDARY
% OF AGE GROUP ENROLLED IN SCHOOL ATTENDING PRIVATE SCHOOL

Age Group	2015	2016	2017	2018	2019	2020	2021	2022	2023	Trend
3-4	61.9%	63.5%	58.1%	54.3%	55.1%	49.5%	41.3%	50.8%	50.3%	
5-9	16.6%	17.7%	14.9%	13.2%	12.9%	15.6%	15.6%	16.5%	15.2%	
10-14	13.1%	12.7%	10.1%	6.1%	5.3%	9.1%	8.8%	9.4%	9.0%	
15-17	11.7%	12.4%	10.4%	8.6%	7.3%	8.7%	9.2%	9.0%	10.9%	
18-19	16.0%	15.5%	18.2%	11.8%	10.2%	7.8%	11.3%	12.5%	13.1%	

Source: U.S. Census American Community Survey 5-Year Estimates 2015, 2016, 2017, 2018, 2019, 2020, 2021, 2022, 2023

GENERAL DEMOGRAPHICS

The following information represents block group estimates created from market research and U.S. Census data obtained from the Environmental Systems Research Institute [ESRI]. ESRI provides a yearly update to their demographic data in increments of five years. To make updates to their demographic data set, they use American Community Survey [ACS] data that takes a series of monthly sample surveys but only from areas with populations of 65,000 or more. One year of ACS data is a period estimate as a twelve-month average, rather than a single point in time.

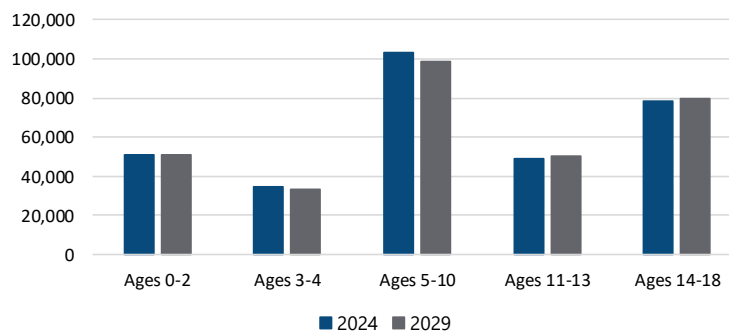
According to the ESRI estimates, the total population of Franklin County is estimated to increase over the next five years. As illustrated in the table below, the number of children, ages 5-18, is estimated to decrease by 2,002 children, or approximately 1 percent.

FRANKLIN COUNTY POPULATION ESTIMATES

Age Group	2024	2029	Change	% Change
Ages 0-2	51,081	50,957	-124	-0.2%
Ages 3-4	34,793	33,451	-1,342	-3.9%
Ages 5-10	103,357	98,553	-4,804	-4.6%
Ages 11-13	48,863	50,423	1,560	3.2%
Ages 14-18	78,343	79,585	1,242	1.6%
Ages 5-18	230,563	228,561	-2,002	-0.9%
Total Population	1,354,595	1,379,274	24,679	1.8%

Source: ESRI BIS

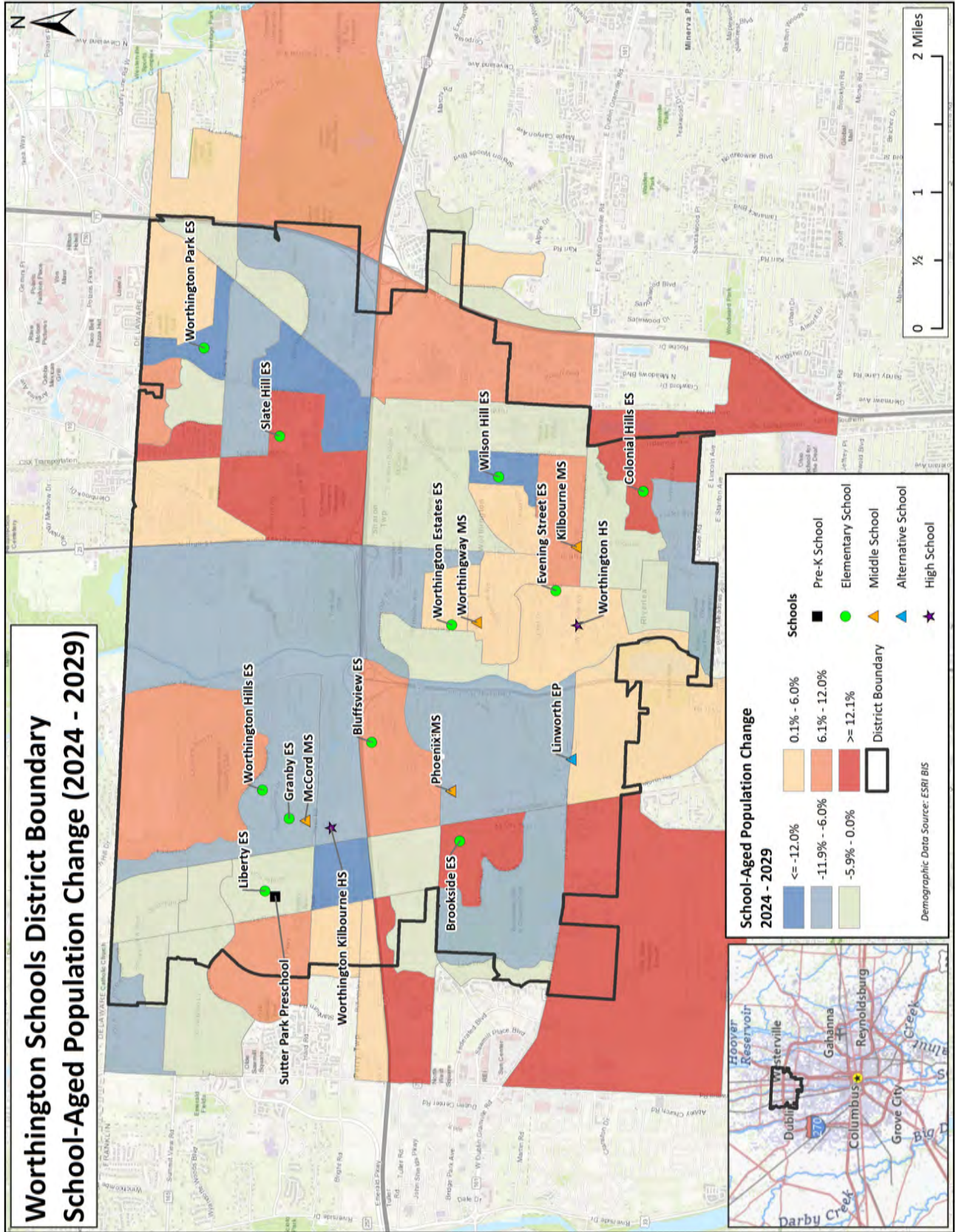
FRANKLIN COUNTY POPULATION ESTIMATES



WORTHINGTON SCHOOLS BOUNDARY ESTIMATED SCHOOL-AGED POPULATION CHANGE 2024-2029

The map on the following page shows school-aged population change in the U.S. Census block groups within / around the Worthington Schools boundary. Population changes are based on 2024 and 2029 estimates.

A block group is defined by the U.S. Census Bureau as, “a statistical district of a census tract, generally defined to contain between 600 and 3,000 people and 240 and 1,200 housing units, and the smallest geographic unit for which the Census Bureau tabulates sample data.”



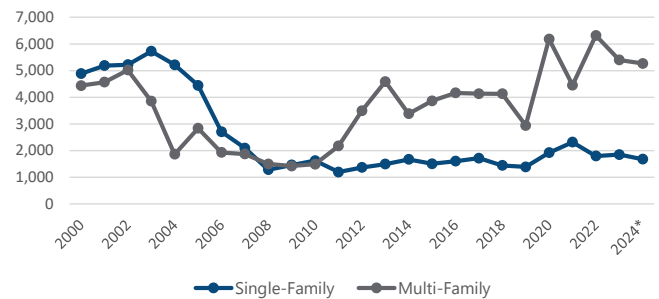
HOUSING DATA

Housing development and building permits are tracked to determine their effect on student enrollment. The table and graph below illustrate the number of single- and multi-family building permits issued in Franklin County, Columbus City, and Worthington City since 2000.

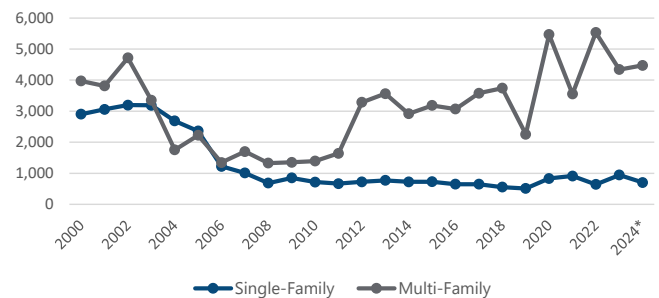
BUILDING PERMITS						
Year	FRANKLIN COUNTY		COLUMBUS CITY		WORTHINGTON CITY	
	Single-Family	Multi-Family	Single-Family	Multi-Family	Single-Family	Multi-Family
2000	4,885	4,436	2,903	3,971	2	4
2001	5,190	4,567	3,058	3,815	4	6
2002	5,223	5,020	3,196	4,716	6	0
2003	5,727	3,853	3,188	3,350	5	0
2004	5,220	1,866	2,687	1,753	1	0
2005	4,446	2,838	2,360	2,224	0	0
2006	2,707	1,932	1,223	1,345	0	8
2007	2,094	1,873	1,008	1,698	5	0
2008	1,286	1,500	686	1,326	1	0
2009	1,464	1,425	852	1,354	1	0
2010	1,628	1,491	716	1,391	3	0
2011	1,200	2,175	667	1,642	2	0
2012	1,372	3,492	723	3,286	4	0
2013	1,497	4,590	770	3,565	2	212
2014	1,672	3,386	724	2,918	3	0
2015	1,508	3,865	729	3,186	4	0
2016	1,604	4,166	649	3,071	2	0
2017	1,719	4,135	650	3,579	5	0
2018	1,444	4,131	555	3,742	12	0
2019	1,390	2,945	512	2,258	5	32
2020	1,924	6,184	834	5,467	0	0
2021	2,317	4,455	913	3,555	2	85
2022	1,798	6,319	642	5,535	1	0
2023	1,853	5,399	943	4,340	3	0
2024*	1,682	5,268	702	4,475	5	0

Source: SOCDs Building Permits Database (*preliminary through October 2024)

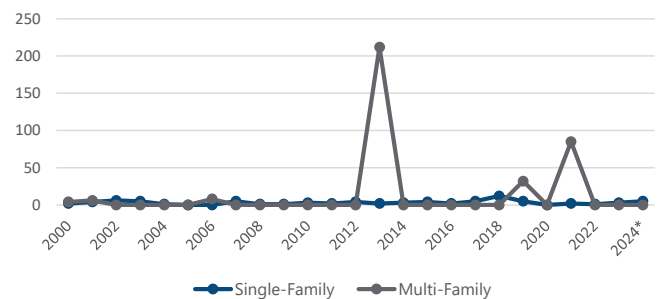
FRANKLIN COUNTY BUILDING PERMITS



COLUMBUS CITY BUILDING PERMITS



WORTHINGTON CITY BUILDING PERMITS



The table below includes residential development currently occurring within the Worthington Schools boundary, according to data provided by the City of Worthington Planning & Building Department.

RESIDENTIAL DEVELOPMENT

Location	Type	Units	Notes
Worthington Mall / High North	Multi-family	350	Approved; but until the whole site redevelops, it will not be constructed. This development is a mix of one- and two-bedroom units with several three-bedroom units. There is currently no timeframe on construction.

Source: City of Worthington Planning & Building Department

RESIDENT LIVE BIRTH DATA

Utilization of resident live birth data is recommended when projecting future kindergarten enrollments. This data provides a helpful overall trend. Large bubbles in birth counts, either up or down, can also be planned for or anticipated by the District.

In addition, the live birth counts are used in determining a birth-to-kindergarten and birth-to-first grade survival ratio. This ratio identifies the percentage of children born in a representative area who attend kindergarten and first grade in the District five and six years later. The survival ratios for birth-to-kindergarten, birth-to-first grade, as well as grades 1-12 can be found on page 26 of this report.

Data is arranged by the residence of the mother. For example, if a mother lives in Worthington but delivers her baby in Columbus, the birth is counted in Worthington. Live birth counts are different from live birth rates. The live birth count is simply the actual number of live births. A birth rate is the number of births per 1,000 women in a specified population group.

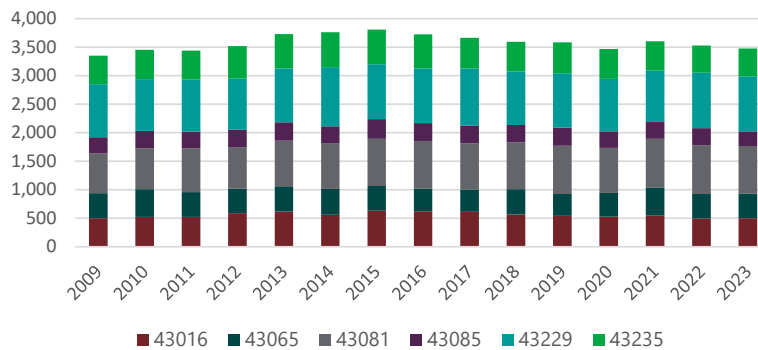
The table and graph include the resident live birth counts for ZIP codes 43016, 43065, 43081, 43085, 43229, and 43235.

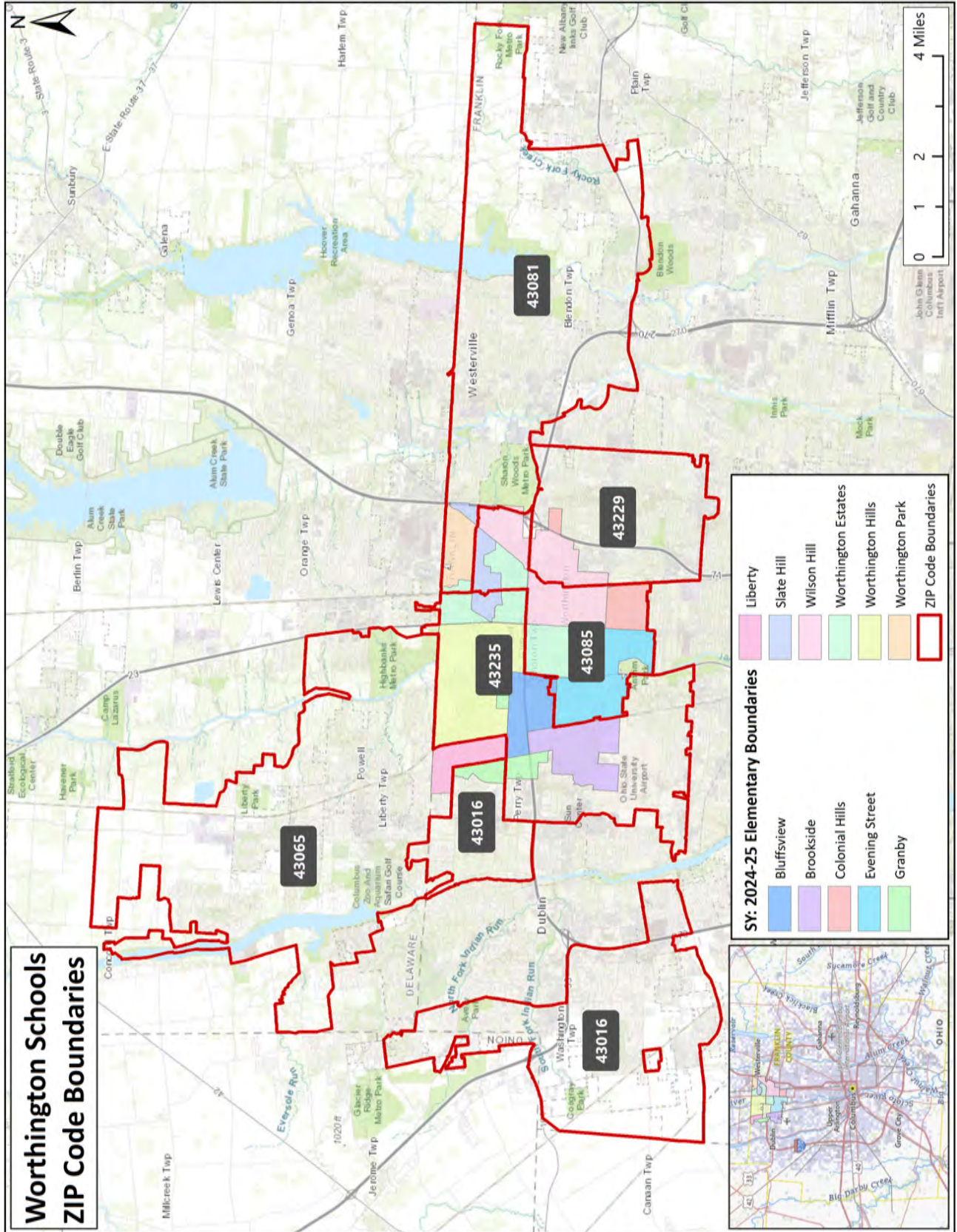
**WORTHINGTON SCHOOLS ZIP CODES
RESIDENT LIVE BIRTH COUNTS**

Year	43016	43065	43081	43085	43229	43235
2009	497	441	697	288	930	497
2010	521	490	711	312	904	516
2011	521	435	769	292	914	508
2012	589	428	733	301	897	573
2013	617	441	803	322	946	601
2014	560	455	803	296	1,038	610
2015	629	437	825	349	961	607
2016	621	399	834	316	958	599
2017	612	394	805	317	999	539
2018	563	447	823	303	941	517
2019	540	387	842	321	952	544
2020	529	414	793	287	921	525
2021	552	478	863	295	900	517
2022	493	434	852	299	973	479
2023	498	437	832	256	963	494

Source: Ohio Department of Health

**WORTHINGTON SCHOOLS ZIP CODES
RESIDENT LIVE BIRTH COUNTS**





SURVIVAL RATIOS

The chart below demonstrates the ten-year changes, by grade level, in enrollment as students move through the system. Percentages greater than 100 indicate that there are more students than there were in the previous grade the previous year. In other words, there was an increase in student population where new students were added to the system. Percentages less than 100 indicate that there was decline or students left the system. If the exact number of students in 1st grade during the 2015-16 school year were present in 2nd grade for the 2016-17 school year, the survival ratio would be 100 percent.

Birth-to-Kindergarten and Birth-to-First Grade: This ratio indicates the number of children born in the area who attend kindergarten and first grade in the district five and six years later. What is important to note is the trend in survival ratios, not necessarily the actual number.

Grades 8 to 9: The higher than usual percentage may be a result of school district promotion policies. Often in school districts, students are promoted from 8th to 9th grade and after one year in 9th grade do not have sufficient credits to be classified as a 10th grader and are counted again as 9th graders the following year. There may also be students who are attending private or charter schools or are home schooled through grade 8 and then attend public schools for high school education.

The COVID-19 pandemic introduced an unforeseen level of volatility, nationwide, as seen in the survival ratios for the 2019-20 to 2020-21 and 2020-21 to 2021-22 school years. These ratios will need to be monitored closely over the next few years as new trends are established.

Survival Ratios - District-wide

from	to	Birth to K	K to 1	Birth to 1	1 to 2	2 to 3	3 to 4	4 to 5	5 to 6	6 to 7	7 to 8	8 to 9	9 to 10	10 to 11	11 to 12
2015-16	2016-17	21.17%	106.42%	22.09%	98.69%	100.87%	100.61%	100.53%	103.01%	100.00%	101.66%	100.70%	100.92%	97.38%	100.58%
2016-17	2017-18	20.22%	105.77%	22.39%	95.67%	99.73%	97.91%	98.18%	98.43%	103.48%	102.61%	100.54%	100.00%	98.43%	102.27%
2017-18	2018-19	22.73%	107.44%	21.73%	98.70%	100.14%	99.33%	102.38%	100.62%	101.86%	100.54%	101.34%	102.16%	101.68%	100.00%
2018-19	2019-20	22.59%	105.19%	23.91%	100.52%	101.32%	101.64%	100.94%	98.78%	101.23%	103.01%	100.40%	100.40%	100.79%	98.90%
2019-20	2020-21	19.80%	98.24%	22.20%	98.32%	98.05%	97.01%	97.58%	96.95%	99.63%	99.76%	100.25%	98.27%	98.68%	100.39%
2020-21	2021-22	21.20%	106.63%	21.11%	100.48%	96.81%	100.93%	99.87%	99.31%	101.23%	100.87%	99.88%	100.13%	100.00%	102.94%
2021-22	2022-23	21.52%	103.54%	21.95%	101.37%	101.07%	98.70%	102.10%	100.00%	100.83%	101.76%	101.73%	101.47%	98.10%	105.28%
2022-23	2023-24	20.26%	105.45%	22.70%	100.61%	99.63%	98.58%	99.76%	97.94%	103.75%	101.65%	102.26%	99.15%	96.63%	101.29%
2023-24	2024-25	19.52%	101.92%	20.65%	97.96%	100.00%	100.00%	100.12%	99.52%	103.02%	102.20%	103.25%	102.21%	99.88%	101.87%
mean simple all years		21.00%	104.51%	22.08%	99.15%	99.73%	99.41%	100.16%	99.39%	101.67%	101.56%	101.15%	100.52%	99.06%	101.50%
std. dev. simple all years		1.16%	2.89%	0.93%	1.78%	1.47%	1.51%	1.59%	1.75%	1.48%	1.03%	1.09%	1.32%	1.64%	1.88%
mean simple 5 years		20.46%	103.16%	21.72%	99.75%	99.11%	99.05%	99.89%	98.74%	101.69%	101.25%	101.47%	100.24%	98.66%	102.35%
std. dev. simple 5 years		0.87%	3.29%	0.83%	1.51%	1.68%	1.49%	1.61%	1.26%	1.68%	0.96%	1.40%	1.62%	1.39%	1.88%
mean simple 3 years		20.43%	103.64%	21.76%	99.98%	100.23%	99.10%	100.66%	99.15%	102.54%	101.87%	102.41%	100.94%	98.20%	102.81%
std. dev. simple 3 years		1.01%	1.77%	1.04%	1.79%	0.75%	0.78%	1.26%	1.08%	1.52%	0.29%	0.77%	1.60%	1.63%	2.16%
mean simple 2 years		19.89%	103.69%	21.67%	99.28%	99.82%	99.29%	99.94%	98.73%	103.39%	101.92%	102.76%	100.68%	98.25%	101.58%
std. dev. simple 2 years		0.52%	2.49%	1.45%	1.88%	0.26%	1.00%	0.25%	1.12%	0.52%	0.38%	0.70%	2.16%	2.30%	0.41%
mean weighted all years		20.49%	103.70%	21.73%	99.47%	99.68%	99.39%	100.21%	99.07%	102.25%	101.68%	101.91%	100.75%	98.84%	102.04%
std. dev. weighted all years		1.04%	2.51%	1.01%	1.58%	1.32%	1.22%	1.25%	1.14%	1.42%	0.81%	1.27%	1.47%	1.56%	1.74%
mean weighted 5 years		20.05%	103.19%	21.39%	99.20%	99.80%	99.45%	100.18%	99.09%	102.75%	101.86%	102.54%	101.11%	98.81%	102.15%
std. dev. weighted 5 years		0.79%	2.10%	1.00%	1.59%	1.01%	0.94%	0.92%	0.91%	1.19%	0.56%	1.07%	1.55%	1.57%	1.39%
mean weighted 3 years		19.73%	102.61%	21.06%	98.56%	99.98%	99.70%	100.13%	99.26%	103.06%	102.08%	103.02%	101.64%	99.24%	101.90%
std. dev. weighted 3 years		0.56%	1.65%	0.98%	1.41%	0.32%	0.70%	0.51%	0.76%	0.65%	0.26%	0.56%	1.42%	1.53%	0.88%
mean weighted 2 years		19.56%	102.09%	20.74%	98.08%	99.98%	99.93%	100.10%	99.45%	103.06%	102.17%	103.20%	102.06%	99.72%	101.84%
std. dev. weighted 2 years		0.22%	1.06%	0.62%	0.80%	0.11%	0.43%	0.11%	0.48%	0.22%	0.16%	0.30%	0.92%	0.98%	0.17%

WORTHINGTON SCHOOLS HISTORICAL ENROLLMENT

As indicated in the table below, over the past ten years, student enrollment in the Worthington Schools has increased by 816 students.

Historical Enrollment - District-wide

Grade	2015-16	2016-17	2017-18	2018-19	2019-20	2020-21	2021-22	2022-23	2023-24	2024-25
PS	224	245	288	292	317	219	271	307	319	328
K	717	728	712	848	850	754	790	789	728	700
1	763	763	770	765	892	835	804	818	832	742
2	808	753	730	760	769	877	839	815	823	815
3	817	815	751	731	770	754	849	848	812	823
4	759	822	798	746	743	747	761	838	836	812
5	698	763	807	817	753	725	746	777	836	837
6	727	719	751	812	807	730	720	746	761	832
7	724	727	744	765	822	804	739	726	774	784
8	710	736	746	748	788	820	811	752	738	791
9	758	715	740	756	751	790	819	825	769	762
10	724	765	715	756	759	738	791	831	818	786
11	692	705	753	727	762	749	738	776	803	817
12	710	696	721	753	719	765	771	777	786	818
K - 12 Total	9,607	9,707	9,738	9,984	10,185	10,088	10,178	10,318	10,316	10,319
Grand Total	9,831	9,952	10,026	10,276	10,502	10,307	10,449	10,625	10,635	10,647

Source: Worthington Schools Student Data, October Count

Historical Enrollment - District-wide

Grade	2015-16	2016-17	2017-18	2018-19	2019-20	2020-21	2021-22	2022-23	2023-24	2024-25
PS	224	245	288	292	317	219	271	307	319	328
K - 5	4,562	4,644	4,568	4,667	4,777	4,692	4,789	4,885	4,867	4,729
6 - 8	2,161	2,182	2,241	2,325	2,417	2,354	2,270	2,224	2,273	2,407
9 - 12	2,884	2,881	2,929	2,992	2,991	3,042	3,119	3,209	3,176	3,183
K - 12 Total	9,607	9,707	9,738	9,984	10,185	10,088	10,178	10,318	10,316	10,319
Grand Total	9,831	9,952	10,026	10,276	10,502	10,307	10,449	10,625	10,635	10,647

Source: Worthington Schools Student Data, October Count

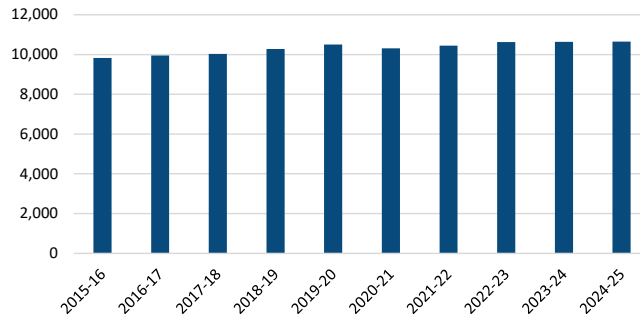
The varying shades of color in the table represent statistically significant cohort sizes. The darker blue represents smaller cohorts, while the darker red represents larger cohorts, comparatively.

Historical Enrollment - by Elementary Boundary

Elementary Boundary	2015-16	2016-17	2017-18	2018-19	2019-20	2020-21	2021-22	2022-23	2023-24	2024-25	Trend
Bluffsview Boundary	747	782	808	880	868	858	867	860	852	858	
Brookside Boundary	600	618	610	602	654	620	622	664	685	654	
Colonial Hills Boundary	715	723	746	777	758	806	800	813	786	852	
Evening Street Boundary	1,001	1,020	1,072	1,064	1,117	1,060	1,077	1,077	1,117	1,096	
Granby Boundary	888	921	938	957	957	937	934	953	968	962	
Liberty Boundary	987	969	972	999	1,033	997	1,030	1,013	979	968	
Slate Hill Boundary	1,026	999	967	955	998	1,008	1,030	1,080	1,051	1,071	
Wilson Hill Boundary	977	998	994	983	986	943	928	951	953	942	
Worthington Estates Boundary	1,146	1,154	1,157	1,236	1,273	1,251	1,352	1,366	1,396	1,428	
Worthington Hills Boundary	880	912	921	977	1,001	971	980	1,037	1,073	1,077	
Worthington Park Boundary	864	856	841	846	857	856	829	811	775	739	
Grand Total	9,831	9,952	10,026	10,276	10,502	10,307	10,449	10,625	10,635	10,647	

Source: Worthington Schools Student Data, October Count

**HISTORICAL ENROLLMENT -
DISTRICT-WIDE**



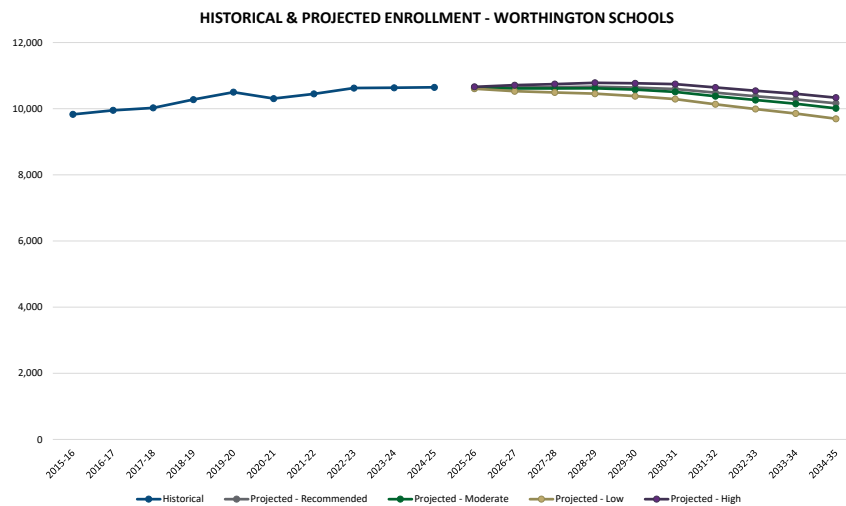
PROJECTED ENROLLMENT

Woolpert developed low, moderate, high, and recommended enrollment projections for the Worthington Schools based on students **living within** the 2024-25 elementary school boundaries. The moderate enrollment projections are based on a selected average or weighted average of survival ratios (in this case, a 3-year weighted average). The low and high enrollment projections are developed using statistical distributional theory, providing the District with a more conservative (low) and more liberal (high) enrollment projection. The recommended enrollment projection is based on a detailed analysis of historical enrollment and resulting survival ratios over the past 10 years, by elementary school boundary. Significant shifts in survival ratio patterns are realized and accounted for in determining projection ratios independently for each grade level. The recommended illustrates the most likely direction of the District based on more recent trends.

The range of enrollment projections from low (conservative) to high (liberal) are offered due to the limitations of the cohort survival method in factoring changes to policies, program offerings, and future changes in housing and migration patterns. For example, the low enrollment projection might be used if housing declines significantly more than anticipated; the high enrollment projection might be used if housing growth increases at a more rapid rate than seen in recent years.

It should be noted that the actual live birth counts are available through 2023 and project kindergarten enrollment through 2028-29. To project kindergarten through 2034-35, a simple average of the last 3 years of live birth counts was used.

Projected Preschool enrollment does not follow the cohort survival method but is based on the current 2024-25 enrollment of 328 PS students.



WORTHINGTON SCHOOLS PROJECTED ENROLLMENT—RECOMMENDED

Based on the Recommended projected enrollment, student enrollment in the Worthington Schools is projected to decrease from 10,647 in the 2024-25 school year to 10,165 students in the 2034-35 school year.

Projected Enrollment - Recommended - District-wide

Grade	2025-26	2026-27	2027-28	2028-29	2029-30	2030-31	2031-32	2032-33	2033-34	2034-35
PS	328	328	328	328	328	328	328	328	328	328
K	703	727	700	680	702	702	702	702	702	702
1	722	727	750	725	702	725	725	725	725	725
2	740	719	722	747	719	699	723	723	723	723
3	816	738	720	722	747	720	700	723	723	723
4	823	818	738	720	723	746	720	701	725	725
5	815	828	823	742	726	727	750	724	703	724
6	830	813	824	817	742	719	723	746	721	698
7	852	852	830	846	837	759	741	744	767	741
8	810	875	875	854	869	862	778	759	762	786
9	812	831	898	897	875	896	886	800	783	784
10	771	821	840	908	906	888	904	896	809	792
11	782	767	818	840	906	901	882	903	891	801
12	839	801	785	838	857	926	923	903	922	913
K - 12 Total	10,315	10,317	10,323	10,336	10,311	10,270	10,157	10,049	9,956	9,837
Grand Total	10,643	10,645	10,651	10,664	10,639	10,598	10,485	10,377	10,284	10,165

Source: Woolpert

Projected Enrollment - Recommended - District-wide

Grade	2025-26	2026-27	2027-28	2028-29	2029-30	2030-31	2031-32	2032-33	2033-34	2034-35
PS	328	328	328	328	328	328	328	328	328	328
K - 5	4,619	4,557	4,453	4,336	4,319	4,319	4,320	4,298	4,301	4,322
6 - 8	2,492	2,540	2,529	2,517	2,448	2,340	2,242	2,249	2,250	2,225
9 - 12	3,204	3,220	3,341	3,483	3,544	3,611	3,595	3,502	3,405	3,290
K - 12 Total	10,315	10,317	10,323	10,336	10,311	10,270	10,157	10,049	9,956	9,837
Grand Total	10,643	10,645	10,651	10,664	10,639	10,598	10,485	10,377	10,284	10,165

Source: Woolpert

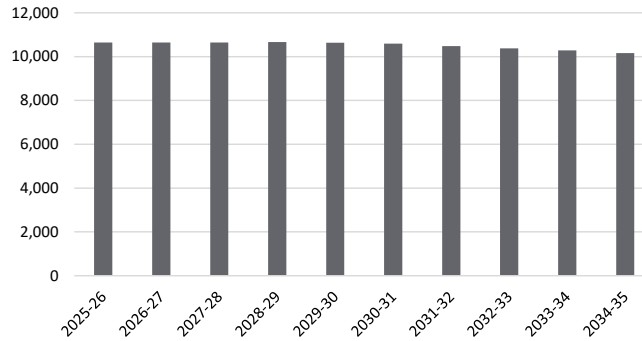
The varying shades of color in the table represent statistically significant cohort sizes. The darker blue represents smaller cohorts, while the darker red represents larger cohorts, comparatively.

Projected Enrollment - Recommended - by Elementary Boundary

Elementary Boundary	2025-26	2026-27	2027-28	2028-29	2029-30	2030-31	2031-32	2032-33	2033-34	2034-35	Trend
Bluffsview Boundary	858	854	846	833	834	792	780	767	758	740	
Brookside Boundary	650	654	649	648	649	639	635	617	605	594	
Colonial Hills Boundary	858	862	862	884	895	894	882	886	866	845	
Evening Street Boundary	1,077	1,062	1,059	1,032	1,021	1,001	975	946	930	917	
Granby Boundary	949	954	955	956	934	925	902	892	871	875	
Liberty Boundary	953	962	969	974	969	994	993	996	1,005	1,005	
Slate Hill Boundary	1,098	1,125	1,114	1,127	1,146	1,144	1,162	1,163	1,160	1,153	
Wilson Hill Boundary	946	931	943	951	933	946	942	939	930	925	
Worthington Estates Boundary	1,443	1,448	1,460	1,457	1,459	1,456	1,428	1,419	1,418	1,384	
Worthington Hills Boundary	1,098	1,103	1,128	1,135	1,148	1,149	1,130	1,108	1,105	1,086	
Worthington Park Boundary	713	690	666	667	651	658	656	644	636	641	
Grand Total	10,643	10,645	10,651	10,664	10,639	10,598	10,485	10,377	10,284	10,165	

Source: Woolpert

PROJECTED ENROLLMENT - RECOMMENDED - DISTRICT-WIDE



WORTHINGTON SCHOOLS PROJECTED ENROLLMENT—MODERATE

Based on the Moderate projected enrollment, student enrollment in the Worthington Schools is projected to decrease from 10,647 in the 2024-25 school year to 10,014 students in the 2034-35 school year.

Projected Enrollment - Moderate - District-wide

Grade	2025-26	2026-27	2027-28	2028-29	2029-30	2030-31	2031-32	2032-33	2033-34	2034-35
PS	328	328	328	328	328	328	328	328	328	328
K	691	716	688	669	691	691	691	691	691	691
1	722	715	738	714	691	713	713	713	713	713
2	732	712	704	729	702	683	705	705	705	705
3	816	731	713	704	729	703	683	705	705	705
4	823	818	733	719	707	729	703	686	709	709
5	815	828	823	737	725	710	732	707	688	707
6	830	813	824	817	735	711	705	728	703	682
7	852	852	830	846	837	752	734	726	748	723
8	810	875	875	854	869	862	773	756	744	768
9	813	836	905	898	879	904	893	800	783	770
10	771	822	847	917	907	889	910	903	809	792
11	782	767	819	847	915	902	883	912	898	801
12	839	801	785	839	862	932	927	904	927	920
K - 12 Total	10,296	10,286	10,284	10,290	10,249	10,181	10,052	9,936	9,823	9,686
Grand Total	10,624	10,614	10,612	10,618	10,577	10,509	10,380	10,264	10,151	10,014

Source: Woolpert

Projected Enrollment - Moderate - District-wide

Grade	2025-26	2026-27	2027-28	2028-29	2029-30	2030-31	2031-32	2032-33	2033-34	2034-35
PS	328	328	328	328	328	328	328	328	328	328
K - 5	4,599	4,520	4,399	4,272	4,245	4,229	4,227	4,207	4,211	4,230
6 - 8	2,492	2,540	2,529	2,517	2,441	2,325	2,212	2,210	2,195	2,173
9 - 12	3,205	3,226	3,356	3,501	3,563	3,627	3,613	3,519	3,417	3,283
K - 12 Total	10,296	10,286	10,284	10,290	10,249	10,181	10,052	9,936	9,823	9,686
Grand Total	10,624	10,614	10,612	10,618	10,577	10,509	10,380	10,264	10,151	10,014

Source: Woolpert

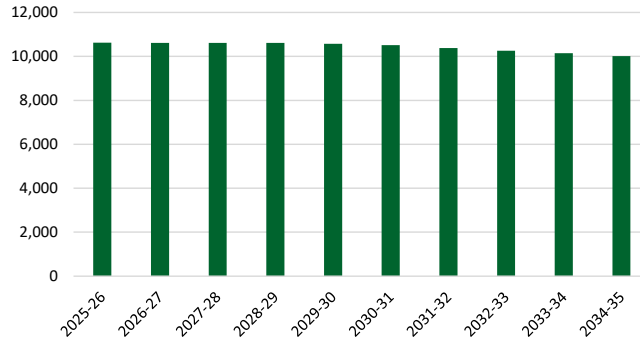
The varying shades of color in the table represent statistically significant cohort sizes. The darker blue represents smaller cohorts, while the darker red represents larger cohorts, comparatively.

Projected Enrollment - Moderate - by Elementary Boundary

Elementary Boundary	2025-26	2026-27	2027-28	2028-29	2029-30	2030-31	2031-32	2032-33	2033-34	2034-35	Trend
Bluffsview Boundary	857	852	843	831	831	786	773	760	749	730	
Brookside Boundary	648	652	646	644	644	633	628	609	596	584	
Colonial Hills Boundary	856	859	861	882	891	888	876	880	858	835	
Evening Street Boundary	1,075	1,060	1,056	1,027	1,014	992	965	935	917	901	
Granby Boundary	948	951	952	952	929	919	891	882	859	863	
Liberty Boundary	951	958	964	968	961	983	980	983	989	988	
Slate Hill Boundary	1,096	1,122	1,111	1,123	1,140	1,134	1,151	1,150	1,146	1,136	
Wilson Hill Boundary	944	927	937	945	926	936	931	928	917	911	
Worthington Estates Boundary	1,441	1,445	1,455	1,453	1,453	1,447	1,417	1,406	1,402	1,366	
Worthington Hills Boundary	1,096	1,100	1,124	1,130	1,142	1,139	1,119	1,095	1,091	1,069	
Worthington Park Boundary	712	688	663	663	646	652	649	636	627	631	
Grand Total	10,624	10,614	10,612	10,618	10,577	10,509	10,380	10,264	10,151	10,014	

Source: Woolpert

PROJECTED ENROLLMENT - MODERATE - DISTRICT-WIDE



WORTHINGTON SCHOOLS PROJECTED ENROLLMENT—LOW

Based on the Low projected enrollment, student enrollment in the Worthington Schools is projected to decrease from 10,647 in the 2024-25 school year to 9,697 students in the 2034-35 school year.

Projected Enrollment - Low- District-wide

Grade	2025-26	2026-27	2027-28	2028-29	2029-30	2030-31	2031-32	2032-33	2033-34	2034-35
PS	328	328	328	328	328	328	328	328	328	328
K	683	707	680	660	682	682	682	682	682	682
1	719	700	724	698	677	699	699	699	699	699
2	729	702	685	709	682	662	685	685	685	685
3	816	726	703	685	709	682	663	685	685	685
4	823	818	726	703	686	707	681	664	687	687
5	815	828	823	726	706	687	709	686	667	685
6	830	804	815	807	724	696	679	700	678	654
7	852	844	819	836	826	740	717	699	720	695
8	810	875	870	844	859	851	759	734	715	738
9	812	831	898	896	868	888	877	781	759	737
10	770	821	840	905	895	876	891	881	782	762
11	780	755	808	832	894	886	864	885	871	772
12	838	791	773	826	845	909	902	882	899	888
K - 12 Total	10,277	10,202	10,164	10,127	10,053	9,965	9,808	9,663	9,529	9,369
Grand Total	10,605	10,530	10,492	10,455	10,381	10,293	10,136	9,991	9,857	9,697

Source: Woolpert

Projected Enrollment - Low- District-wide

Grade	2025-26	2026-27	2027-28	2028-29	2029-30	2030-31	2031-32	2032-33	2033-34	2034-35
PS	328	328	328	328	328	328	328	328	328	328
K - 5	4,585	4,481	4,341	4,181	4,142	4,119	4,119	4,101	4,105	4,123
6 - 8	2,492	2,523	2,504	2,487	2,409	2,287	2,155	2,133	2,113	2,087
9 - 12	3,200	3,198	3,319	3,459	3,502	3,559	3,534	3,429	3,311	3,159
K - 12 Total	10,277	10,202	10,164	10,127	10,053	9,965	9,808	9,663	9,529	9,369
Grand Total	10,605	10,530	10,492	10,455	10,381	10,293	10,136	9,991	9,857	9,697

Source: Woolpert

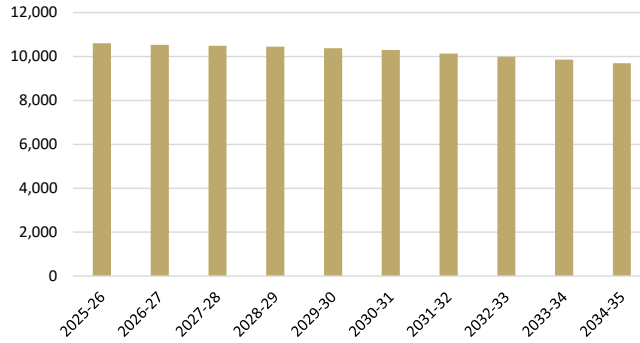
The varying shades of color in the table represent statistically significant cohort sizes. The darker blue represents smaller cohorts, while the darker red represents larger cohorts, comparatively.

Projected Enrollment - Low - by Elementary Boundary

Elementary Boundary	2025-26	2026-27	2027-28	2028-29	2029-30	2030-31	2031-32	2032-33	2033-34	2034-35	Trend
Bluffsview Boundary	855	844	834	816	814	768	753	737	725	706	
Brookside Boundary	648	648	640	636	633	622	616	595	581	567	
Colonial Hills Boundary	856	854	849	868	873	869	853	854	831	806	
Evening Street Boundary	1,074	1,051	1,044	1,010	995	971	942	910	890	874	
Granby Boundary	946	943	940	938	912	900	872	860	836	835	
Liberty Boundary	950	950	953	953	943	964	959	958	964	959	
Slate Hill Boundary	1,093	1,113	1,097	1,106	1,120	1,112	1,123	1,121	1,112	1,100	
Wilson Hill Boundary	943	920	929	932	910	919	910	906	893	883	
Worthington Estates Boundary	1,435	1,433	1,439	1,429	1,426	1,415	1,383	1,366	1,358	1,322	
Worthington Hills Boundary	1,094	1,091	1,111	1,112	1,121	1,115	1,093	1,066	1,058	1,036	
Worthington Park Boundary	711	683	656	655	634	638	632	618	609	609	
Grand Total	10,605	10,530	10,492	10,455	10,381	10,293	10,136	9,991	9,857	9,697	

Source: Woolpert

PROJECTED ENROLLMENT - LOW- DISTRICT-WIDE



WORTHINGTON SCHOOLS PROJECTED ENROLLMENT—HIGH

Based on the High projected enrollment, student enrollment in the Worthington Schools is projected to decrease from 10,647 in the 2024-25 school year to 10,335 students in the 2034-35 school year.

Projected Enrollment - High - District-wide

Grade	2025-26	2026-27	2027-28	2028-29	2029-30	2030-31	2031-32	2032-33	2033-34	2034-35
PS	328	328	328	328	328	328	328	328	328	328
K	703	727	700	680	702	702	702	702	702	702
1	725	727	750	725	702	725	725	725	725	725
2	740	720	722	747	719	699	723	723	723	723
3	816	738	721	722	747	720	700	723	723	723
4	826	824	738	731	730	753	727	707	732	732
5	815	836	833	747	737	736	760	734	712	733
6	830	813	834	828	749	730	733	757	732	709
7	852	853	837	858	848	769	755	756	779	753
8	810	882	884	864	883	877	790	774	776	800
9	819	841	910	910	892	916	907	818	806	804
10	775	833	854	926	924	908	930	924	829	821
11	784	779	836	859	930	928	911	938	926	830
12	839	811	798	859	879	954	952	933	959	952
K - 12 Total	10,334	10,384	10,417	10,456	10,442	10,417	10,315	10,214	10,124	10,007
Grand Total	10,662	10,712	10,745	10,784	10,770	10,745	10,643	10,542	10,452	10,335

Source: Woolpert

Projected Enrollment - High - District-wide

Grade	2025-26	2026-27	2027-28	2028-29	2029-30	2030-31	2031-32	2032-33	2033-34	2034-35
PS	328	328	328	328	328	328	328	328	328	328
K - 5	4,625	4,572	4,464	4,352	4,337	4,335	4,337	4,314	4,317	4,338
6 - 8	2,492	2,548	2,555	2,550	2,480	2,376	2,278	2,287	2,287	2,262
9 - 12	3,217	3,264	3,398	3,554	3,625	3,706	3,700	3,613	3,520	3,407
K - 12 Total	10,334	10,384	10,417	10,456	10,442	10,417	10,315	10,214	10,124	10,007
Grand Total	10,662	10,712	10,745	10,784	10,770	10,745	10,643	10,542	10,452	10,335

Source: Woolpert

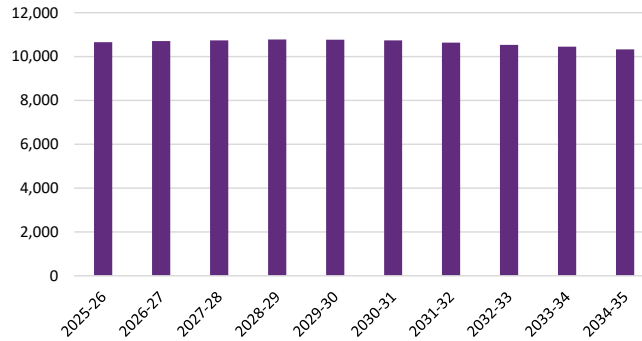
The varying shades of color in the table represent statistically significant cohort sizes. The darker blue represents smaller cohorts, while the darker red represents larger cohorts, comparatively.

Projected Enrollment - High - by Elementary Boundary

Elementary Boundary	2025-26	2026-27	2027-28	2028-29	2029-30	2030-31	2031-32	2032-33	2033-34	2034-35	Trend
Bluffsview Boundary	858	859	854	842	844	804	791	779	770	752	
Brookside Boundary	650	657	654	656	656	647	645	627	614	604	
Colonial Hills Boundary	858	868	870	895	906	907	897	900	881	860	
Evening Street Boundary	1,079	1,069	1,069	1,044	1,035	1,016	990	961	945	932	
Granby Boundary	950	960	964	967	946	939	916	907	886	891	
Liberty Boundary	954	968	977	984	979	1,006	1,006	1,010	1,019	1,020	
Slate Hill Boundary	1,103	1,132	1,124	1,138	1,161	1,159	1,180	1,182	1,180	1,173	
Wilson Hill Boundary	947	937	952	961	945	959	955	953	945	941	
Worthington Estates Boundary	1,448	1,459	1,473	1,474	1,477	1,477	1,450	1,442	1,442	1,407	
Worthington Hills Boundary	1,102	1,110	1,137	1,148	1,163	1,165	1,148	1,126	1,125	1,104	
Worthington Park Boundary	713	693	671	675	658	666	665	655	645	651	
Grand Total	10,662	10,712	10,745	10,784	10,770	10,745	10,643	10,542	10,452	10,335	

Source: Woolpert

PROJECTED ENROLLMENT - HIGH - DISTRICT-WIDE



ENROLLMENT BY ELEMENTARY BOUNDARY OF RESIDENCE

The following pages illustrate historical and projected PS—12 enrollment by 2024-25 elementary boundary of residence.

BLUFFSVIEW BOUNDARY 39

BROOKSIDE BOUNDARY 44

COLONIAL HILLS BOUNDARY 49

EVENING STREET BOUNDARY 54

GRANBY BOUNDARY 59

LIBERTY BOUNDARY 64

SLATE HILL BOUNDARY 69

WILSON HILL BOUNDARY 74

WORTHINGTON ESTATES BOUNDARY 79

WORTHINGTON HILLS BOUNDARY 84

WORTHINGTON PARK BOUNDARY 89

BLUFFSVIEW BOUNDARY

Historical Enrollment - Bluffsview Boundary

Grade	2015-16	2016-17	2017-18	2018-19	2019-20	2020-21	2021-22	2022-23	2023-24	2024-25
PS	20	22	21	21	19	16	18	24	28	31
K	63	51	70	76	59	56	71	55	52	64
1	52	70	56	90	83	61	66	71	56	52
2	54	60	65	58	86	76	62	63	68	54
3	52	59	62	74	55	87	73	62	61	68
4	58	57	63	69	69	55	84	71	66	62
5	56	61	59	66	62	72	57	85	65	67
6	58	57	62	62	61	59	68	55	86	63
7	59	67	57	65	65	63	56	61	50	86
8	56	59	70	57	64	65	63	63	67	56
9	54	61	55	71	56	67	62	66	58	67
10	54	55	61	55	71	56	63	63	62	59
11	52	51	51	62	58	70	51	65	66	65
12	59	52	56	54	60	55	73	56	67	64
K - 12 Total	727	760	787	859	849	842	849	836	824	827
Grand Total	747	782	808	880	868	858	867	860	852	858

Source: Worthington Schools Student Data, October Count

Historical Enrollment - Bluffsview Boundary

Grade	2015-16	2016-17	2017-18	2018-19	2019-20	2020-21	2021-22	2022-23	2023-24	2024-25
PS	20	22	21	21	19	16	18	24	28	31
K - 5	335	358	375	433	414	407	413	407	368	367
6 - 8	173	183	189	184	190	187	187	179	203	205
9 - 12	219	219	223	242	245	248	249	250	253	255
K - 12 Total	727	760	787	859	849	842	849	836	824	827
Grand Total	747	782	808	880	868	858	867	860	852	858

Source: Worthington Schools Student Data, October Count

Projected Enrollment - Recommended - Bluffview Boundary

Grade	2025-26	2026-27	2027-28	2028-29	2029-30	2030-31	2031-32	2032-33	2033-34	2034-35
PS	31	31	31	31	31	31	31	31	31	31
K	57	56	52	54	54	54	54	54	54	54
1	64	57	56	52	54	54	54	54	54	54
2	50	62	55	54	50	52	52	52	52	52
3	54	50	61	55	54	50	52	52	52	52
4	69	55	51	62	56	55	51	52	53	53
5	63	70	55	51	63	56	55	51	53	53
6	65	61	68	53	49	61	54	54	50	51
7	60	62	58	65	51	47	59	52	51	48
8	95	67	69	64	72	56	52	65	58	57
9	55	94	66	68	63	71	56	52	64	57
10	67	56	94	66	68	64	71	56	52	64
11	62	70	58	99	69	71	67	74	59	54
12	66	63	72	59	100	70	72	68	75	60
K - 12 Total	827	823	815	802	803	761	749	736	727	709
Grand Total	858	854	846	833	834	792	780	767	758	740

Source: Woolpert

Projected Enrollment - Recommended - Bluffview Boundary

Grade	2025-26	2026-27	2027-28	2028-29	2029-30	2030-31	2031-32	2032-33	2033-34	2034-35
PS	31	31	31	31	31	31	31	31	31	31
K - 5	357	350	330	328	331	321	318	315	318	318
6 - 8	220	190	195	182	172	164	165	171	159	156
9 - 12	250	283	290	292	300	276	266	250	250	235
K - 12 Total	827	823	815	802	803	761	749	736	727	709
Grand Total	858	854	846	833	834	792	780	767	758	740

Source: Woolpert

Projected Enrollment - Moderate - Bluffsview Boundary

Grade	2025-26	2026-27	2027-28	2028-29	2029-30	2030-31	2031-32	2032-33	2033-34	2034-35
PS	31	31	31	31	31	31	31	31	31	31
K	56	55	51	53	53	53	53	53	53	53
1	64	56	55	51	53	53	53	53	53	53
2	50	61	54	53	49	51	51	51	51	51
3	54	50	60	54	53	49	51	51	51	51
4	69	55	51	62	55	54	50	51	52	52
5	63	70	55	51	63	55	54	50	52	52
6	65	61	68	53	49	60	53	53	49	50
7	60	62	58	65	51	47	59	51	50	47
8	95	67	69	64	72	56	52	65	57	56
9	55	95	66	68	63	72	56	52	64	56
10	67	56	95	67	68	64	71	56	52	64
11	62	70	58	100	70	71	67	75	59	54
12	66	63	72	59	101	70	72	68	75	60
K - 12 Total	826	821	812	800	800	755	742	729	718	699
Grand Total	857	852	843	831	831	786	773	760	749	730

Source: Woolpert

Projected Enrollment - Moderate - Bluffsview Boundary

Grade	2025-26	2026-27	2027-28	2028-29	2029-30	2030-31	2031-32	2032-33	2033-34	2034-35
PS	31	31	31	31	31	31	31	31	31	31
K - 5	356	347	326	324	326	315	312	309	312	312
6 - 8	220	190	195	182	172	163	164	169	156	153
9 - 12	250	284	291	294	302	277	266	251	250	234
K - 12 Total	826	821	812	800	800	755	742	729	718	699
Grand Total	857	852	843	831	831	786	773	760	749	730

Source: Woolpert

Projected Enrollment - Low - Bluffsvew Boundary

Grade	2025-26	2026-27	2027-28	2028-29	2029-30	2030-31	2031-32	2032-33	2033-34	2034-35
PS	31	31	31	31	31	31	31	31	31	31
K	55	54	51	52	52	52	52	52	52	52
1	64	55	54	50	52	52	52	52	52	52
2	49	61	52	51	48	49	49	49	49	49
3	54	49	60	52	51	47	49	49	49	49
4	69	55	50	61	53	52	48	49	50	50
5	63	70	55	50	61	53	52	48	50	50
6	65	60	67	52	48	59	51	51	47	48
7	60	61	57	64	50	46	57	49	48	45
8	95	67	69	63	71	55	51	63	54	54
9	55	94	66	68	63	70	55	51	62	54
10	67	56	94	66	67	63	70	55	50	62
11	62	69	57	98	68	70	66	72	58	52
12	66	62	71	58	99	69	70	66	73	58
K - 12 Total	824	813	803	785	783	737	722	706	694	675
Grand Total	855	844	834	816	814	768	753	737	725	706

Source: Woolpert

Projected Enrollment - Low - Bluffsvew Boundary

Grade	2025-26	2026-27	2027-28	2028-29	2029-30	2030-31	2031-32	2032-33	2033-34	2034-35
PS	31	31	31	31	31	31	31	31	31	31
K - 5	354	344	322	316	317	305	302	299	302	302
6 - 8	220	188	193	179	169	160	159	163	149	147
9 - 12	250	281	288	290	297	272	261	244	243	226
K - 12 Total	824	813	803	785	783	737	722	706	694	675
Grand Total	855	844	834	816	814	768	753	737	725	706

Source: Woolpert

Projected Enrollment - High - Bluffsview Boundary

Grade	2025-26	2026-27	2027-28	2028-29	2029-30	2030-31	2031-32	2032-33	2033-34	2034-35
PS	31	31	31	31	31	31	31	31	31	31
K	57	56	52	54	54	54	54	54	54	54
1	64	57	56	52	54	54	54	54	54	54
2	50	62	55	54	50	52	52	52	52	52
3	54	50	61	55	54	50	52	52	52	52
4	69	55	51	63	56	55	51	52	53	53
5	63	71	56	51	64	57	56	52	54	54
6	65	61	69	54	49	62	55	55	51	52
7	60	62	58	66	52	48	60	53	52	49
8	95	67	70	65	73	57	53	66	59	58
9	55	95	67	69	64	73	57	53	66	58
10	67	57	96	67	69	66	73	58	53	66
11	62	71	59	101	71	73	69	77	61	56
12	66	64	73	60	103	72	74	70	78	63
K - 12 Total	827	828	823	811	813	773	760	748	739	721
Grand Total	858	859	854	842	844	804	791	779	770	752

Source: Woolpert

Projected Enrollment - High - Bluffsview Boundary

Grade	2025-26	2026-27	2027-28	2028-29	2029-30	2030-31	2031-32	2032-33	2033-34	2034-35
PS	31	31	31	31	31	31	31	31	31	31
K - 5	357	351	331	329	332	322	319	316	319	319
6 - 8	220	190	197	185	174	167	168	174	162	159
9 - 12	250	287	295	297	307	284	273	258	258	243
K - 12 Total	827	828	823	811	813	773	760	748	739	721
Grand Total	858	859	854	842	844	804	791	779	770	752

Source: Woolpert

BROOKSIDE BOUNDARY

Historical Enrollment - Brookside Boundary

Grade	2015-16	2016-17	2017-18	2018-19	2019-20	2020-21	2021-22	2022-23	2023-24	2024-25
PS	14	11	26	25	24	12	22	27	16	20
K	49	42	43	51	62	55	44	52	52	41
1	57	58	45	49	52	67	59	55	55	55
2	54	49	49	42	53	49	65	62	57	52
3	46	50	47	46	44	47	47	60	60	52
4	61	44	49	45	44	44	50	48	62	56
5	41	61	44	50	46	40	42	51	51	60
6	41	47	51	47	48	40	41	43	52	47
7	40	41	46	47	47	49	41	41	42	51
8	51	42	42	42	52	46	45	45	45	40
9	37	53	41	39	41	54	45	45	48	48
10	42	35	48	43	40	41	49	49	46	45
11	39	44	33	47	44	35	36	46	47	40
12	28	41	46	29	57	41	36	40	52	47
K - 12 Total	586	607	584	577	630	608	600	637	669	634
Grand Total	600	618	610	602	654	620	622	664	685	654

Source: Worthington Schools Student Data, October Count

Historical Enrollment - Brookside Boundary

Grade	2015-16	2016-17	2017-18	2018-19	2019-20	2020-21	2021-22	2022-23	2023-24	2024-25
PS	14	11	26	25	24	12	22	27	16	20
K - 5	308	304	277	283	301	302	307	328	337	316
6 - 8	132	130	139	136	147	135	127	129	139	138
9 - 12	146	173	168	158	182	171	166	180	193	180
K - 12 Total	586	607	584	577	630	608	600	637	669	634
Grand Total	600	618	610	602	654	620	622	664	685	654

Source: Worthington Schools Student Data, October Count

Projected Enrollment - Recommended - Brookside Boundary

Grade	2025-26	2026-27	2027-28	2028-29	2029-30	2030-31	2031-32	2032-33	2033-34	2034-35
PS	20	20	20	20	20	20	20	20	20	20
K	45	45	41	43	43	43	43	43	43	43
1	43	48	47	44	45	45	45	45	45	45
2	54	43	47	47	43	44	45	45	45	45
3	49	51	41	45	44	41	42	42	42	42
4	53	50	52	41	45	44	41	43	43	43
5	56	53	50	52	41	45	45	41	43	43
6	59	56	52	49	52	41	45	44	41	42
7	46	58	54	51	48	51	40	44	43	40
8	51	46	58	55	51	49	51	40	44	44
9	43	55	49	62	58	55	52	54	43	47
10	48	42	54	49	62	58	54	51	54	42
11	41	44	39	50	45	56	53	50	47	49
12	42	43	45	40	52	47	59	55	52	49
K - 12 Total	630	634	629	628	629	619	615	597	585	574
Grand Total	650	654	649	648	649	639	635	617	605	594

Source: Woolpert

Projected Enrollment - Recommended - Brookside Boundary

Grade	2025-26	2026-27	2027-28	2028-29	2029-30	2030-31	2031-32	2032-33	2033-34	2034-35
PS	20	20	20	20	20	20	20	20	20	20
K - 5	300	290	278	272	261	262	261	259	261	261
6 - 8	156	160	164	155	151	141	136	128	128	126
9 - 12	174	184	187	201	217	216	218	210	196	187
K - 12 Total	630	634	629	628	629	619	615	597	585	574
Grand Total	650	654	649	648	649	639	635	617	605	594

Source: Woolpert

Projected Enrollment - Moderate - Brookside Boundary

Grade	2025-26	2026-27	2027-28	2028-29	2029-30	2030-31	2031-32	2032-33	2033-34	2034-35
PS	20	20	20	20	20	20	20	20	20	20
K	44	44	40	42	42	42	42	42	42	42
1	43	47	46	43	44	44	44	44	44	44
2	53	43	46	46	42	43	44	44	44	44
3	49	51	41	44	43	40	41	41	41	41
4	53	50	52	41	44	43	40	42	42	42
5	56	53	50	52	41	44	44	40	42	42
6	59	56	52	49	52	41	44	43	40	41
7	46	58	54	51	48	51	40	43	42	39
8	51	46	58	55	51	49	51	40	43	43
9	43	55	49	62	58	55	52	54	43	46
10	48	42	54	49	62	58	54	51	54	42
11	41	44	39	50	45	56	53	50	47	49
12	42	43	45	40	52	47	59	55	52	49
K - 12 Total	628	632	626	624	624	613	608	589	576	564
Grand Total	648	652	646	644	644	633	628	609	596	584

Source: Woolpert

Projected Enrollment - Moderate - Brookside Boundary

Grade	2025-26	2026-27	2027-28	2028-29	2029-30	2030-31	2031-32	2032-33	2033-34	2034-35
PS	20	20	20	20	20	20	20	20	20	20
K - 5	298	288	275	268	256	256	255	253	255	255
6 - 8	156	160	164	155	151	141	135	126	125	123
9 - 12	174	184	187	201	217	216	218	210	196	186
K - 12 Total	628	632	626	624	624	613	608	589	576	564
Grand Total	648	652	646	644	644	633	628	609	596	584

Source: Woolpert

Projected Enrollment - Low - Brookside Boundary

Grade	2025-26	2026-27	2027-28	2028-29	2029-30	2030-31	2031-32	2032-33	2033-34	2034-35
PS	20	20	20	20	20	20	20	20	20	20
K	44	44	40	42	42	42	42	42	42	42
1	43	46	45	42	43	43	43	43	43	43
2	53	42	45	45	41	42	43	43	43	43
3	49	50	40	43	42	39	40	40	40	40
4	53	50	51	40	43	42	39	41	41	41
5	56	53	50	51	40	43	43	39	41	41
6	59	56	52	49	51	40	42	41	39	39
7	46	58	53	50	47	50	39	41	40	38
8	51	46	58	54	50	48	50	39	41	41
9	43	55	49	62	58	55	52	53	42	44
10	48	42	54	49	61	57	53	50	52	40
11	41	43	39	50	44	55	52	49	46	47
12	42	43	44	39	51	46	58	54	51	48
K - 12 Total	628	628	620	616	613	602	596	575	561	547
Grand Total	648	648	640	636	633	622	616	595	581	567

Source: Woolpert

Projected Enrollment - Low - Brookside Boundary

Grade	2025-26	2026-27	2027-28	2028-29	2029-30	2030-31	2031-32	2032-33	2033-34	2034-35
PS	20	20	20	20	20	20	20	20	20	20
K - 5	298	285	271	263	251	251	250	248	250	250
6 - 8	156	160	163	153	148	138	131	121	120	118
9 - 12	174	183	186	200	214	213	215	206	191	179
K - 12 Total	628	628	620	616	613	602	596	575	561	547
Grand Total	648	648	640	636	633	622	616	595	581	567

Source: Woolpert

Projected Enrollment - High - Brookside Boundary

Grade	2025-26	2026-27	2027-28	2028-29	2029-30	2030-31	2031-32	2032-33	2033-34	2034-35
PS	20	20	20	20	20	20	20	20	20	20
K	45	45	41	43	43	43	43	43	43	43
1	43	48	47	44	45	45	45	45	45	45
2	54	43	47	47	43	44	45	45	45	45
3	49	51	41	45	44	41	42	42	42	42
4	53	50	52	42	45	44	41	43	43	43
5	56	53	50	52	42	45	45	41	43	43
6	59	56	53	50	52	42	46	45	42	43
7	46	58	54	52	49	52	41	45	44	41
8	51	46	58	56	52	50	52	41	45	45
9	43	56	50	63	59	56	53	55	44	48
10	48	43	55	50	63	59	56	53	55	44
11	41	45	40	51	46	58	55	52	49	51
12	42	43	46	41	53	48	61	57	54	51
K - 12 Total	630	637	634	636	636	627	625	607	594	584
Grand Total	650	657	654	656	656	647	645	627	614	604

Source: Woolpert

Projected Enrollment - High - Brookside Boundary

Grade	2025-26	2026-27	2027-28	2028-29	2029-30	2030-31	2031-32	2032-33	2033-34	2034-35
PS	20	20	20	20	20	20	20	20	20	20
K - 5	300	290	278	273	262	262	261	259	261	261
6 - 8	156	160	165	158	153	144	139	131	131	129
9 - 12	174	187	191	205	221	221	225	217	202	194
K - 12 Total	630	637	634	636	636	627	625	607	594	584
Grand Total	650	657	654	656	656	647	645	627	614	604

Source: Woolpert

COLONIAL HILLS BOUNDARY

Historical Enrollment - Colonial Hills Boundary

Grade	2015-16	2016-17	2017-18	2018-19	2019-20	2020-21	2021-22	2022-23	2023-24	2024-25
PS	14	16	19	18	15	11	10	9	10	20
K	46	49	66	75	55	68	66	60	56	51
1	69	53	52	65	74	57	69	66	62	60
2	61	76	53	53	56	76	54	65	66	62
3	72	63	72	51	51	63	77	53	68	73
4	48	75	63	73	55	57	59	74	50	74
5	53	46	72	65	66	54	51	66	72	60
6	50	49	41	72	65	66	50	51	60	74
7	50	49	53	43	72	61	65	50	52	65
8	52	48	49	55	43	80	65	63	47	57
9	34	53	56	52	54	48	76	67	67	50
10	73	37	50	58	49	54	48	77	63	72
11	50	67	34	55	52	51	54	54	66	66
12	43	42	66	42	51	60	56	58	47	68
K - 12 Total	701	707	727	759	743	795	790	804	776	832
Grand Total	715	723	746	777	758	806	800	813	786	852

Source: Worthington Schools Student Data, October Count

Historical Enrollment - Colonial Hills Boundary

Grade	2015-16	2016-17	2017-18	2018-19	2019-20	2020-21	2021-22	2022-23	2023-24	2024-25
PS	14	16	19	18	15	11	10	9	10	20
K - 5	349	362	378	382	357	375	376	384	374	380
6 - 8	152	146	143	170	180	207	180	164	159	196
9 - 12	200	199	206	207	206	213	234	256	243	256
K - 12 Total	701	707	727	759	743	795	790	804	776	832
Grand Total	715	723	746	777	758	806	800	813	786	852

Source: Worthington Schools Student Data, October Count

Projected Enrollment - Recommended - Colonial Hills Boundary

Grade	2025-26	2026-27	2027-28	2028-29	2029-30	2030-31	2031-32	2032-33	2033-34	2034-35
PS	20	20	20	20	20	20	20	20	20	20
K	52	51	55	52	53	53	53	53	53	53
1	53	54	53	57	54	55	55	55	55	55
2	60	53	54	53	57	54	55	55	55	55
3	65	63	55	56	56	59	57	57	57	57
4	74	66	63	56	57	56	60	58	58	58
5	78	78	69	67	59	60	60	64	61	61
6	60	79	78	70	68	60	61	60	64	61
7	75	61	80	80	71	69	61	62	61	65
8	68	78	64	83	83	74	71	63	64	63
9	61	72	83	68	88	88	78	76	67	68
10	51	61	73	84	68	89	89	79	77	68
11	73	51	62	74	85	70	91	91	81	78
12	68	75	53	64	76	87	71	93	93	83
K - 12 Total	838	842	842	864	875	874	862	866	846	825
Grand Total	858	862	862	884	895	894	882	886	866	845

Source: Woolpert

Projected Enrollment - Recommended - Colonial Hills Boundary

Grade	2025-26	2026-27	2027-28	2028-29	2029-30	2030-31	2031-32	2032-33	2033-34	2034-35
PS	20	20	20	20	20	20	20	20	20	20
K - 5	382	365	349	341	336	337	340	342	339	339
6 - 8	203	218	222	233	222	203	193	185	189	189
9 - 12	253	259	271	290	317	334	329	339	318	297
K - 12 Total	838	842	842	864	875	874	862	866	846	825
Grand Total	858	862	862	884	895	894	882	886	866	845

Source: Woolpert

Projected Enrollment - Moderate - Colonial Hills Boundary

Grade	2025-26	2026-27	2027-28	2028-29	2029-30	2030-31	2031-32	2032-33	2033-34	2034-35
PS	20	20	20	20	20	20	20	20	20	20
K	51	50	54	51	52	52	52	52	52	52
1	53	53	52	56	53	54	54	54	54	54
2	59	53	53	52	56	53	54	54	54	54
3	65	62	55	55	55	58	56	56	56	56
4	74	66	63	56	56	55	59	57	57	57
5	78	78	69	67	59	59	59	63	60	60
6	60	79	78	70	67	59	60	59	62	60
7	75	61	80	80	71	68	60	61	60	63
8	68	78	64	83	83	74	71	63	63	62
9	61	72	84	68	89	89	79	76	67	67
10	51	61	74	85	68	89	90	80	77	68
11	73	51	62	75	86	70	91	92	82	78
12	68	75	53	64	76	88	71	93	94	84
K - 12 Total	836	839	841	862	871	868	856	860	838	815
Grand Total	856	859	861	882	891	888	876	880	858	835

Source: Woolpert

Projected Enrollment - Moderate - Colonial Hills Boundary

Grade	2025-26	2026-27	2027-28	2028-29	2029-30	2030-31	2031-32	2032-33	2033-34	2034-35
PS	20	20	20	20	20	20	20	20	20	20
K - 5	380	362	346	337	331	331	334	336	333	333
6 - 8	203	218	222	233	221	201	191	183	185	185
9 - 12	253	259	273	292	319	336	331	341	320	297
K - 12 Total	836	839	841	862	871	868	856	860	838	815
Grand Total	856	859	861	882	891	888	876	880	858	835

Source: Woolpert

Projected Enrollment - Low - Colonial Hills Boundary

Grade	2025-26	2026-27	2027-28	2028-29	2029-30	2030-31	2031-32	2032-33	2033-34	2034-35
PS	20	20	20	20	20	20	20	20	20	20
K	51	50	53	51	52	52	52	52	52	52
1	53	52	51	55	52	53	53	53	53	53
2	59	52	51	50	54	51	52	52	52	52
3	65	62	54	53	53	56	54	54	54	54
4	74	66	62	55	54	53	57	55	55	55
5	78	78	69	66	57	57	57	61	58	58
6	60	78	77	69	66	58	57	56	60	57
7	75	61	79	79	70	67	59	58	57	61
8	68	78	64	82	82	73	69	61	60	59
9	61	72	83	68	87	87	77	74	65	64
10	51	61	73	84	67	88	88	78	75	65
11	73	50	61	73	84	69	89	89	79	75
12	68	74	52	63	75	85	69	91	91	81
K - 12 Total	836	834	829	848	853	849	833	834	811	786
Grand Total	856	854	849	868	873	869	853	854	831	806

Source: Woolpert

Projected Enrollment - Low - Colonial Hills Boundary

Grade	2025-26	2026-27	2027-28	2028-29	2029-30	2030-31	2031-32	2032-33	2033-34	2034-35
PS	20	20	20	20	20	20	20	20	20	20
K - 5	380	360	340	330	322	322	325	327	324	324
6 - 8	203	217	220	230	218	198	185	175	177	177
9 - 12	253	257	269	288	313	329	323	332	310	285
K - 12 Total	836	834	829	848	853	849	833	834	811	786
Grand Total	856	854	849	868	873	869	853	854	831	806

Source: Woolpert

Projected Enrollment - High - Colonial Hills Boundary

Grade	2025-26	2026-27	2027-28	2028-29	2029-30	2030-31	2031-32	2032-33	2033-34	2034-35
PS	20	20	20	20	20	20	20	20	20	20
K	52	51	55	52	53	53	53	53	53	53
1	53	54	53	57	54	55	55	55	55	55
2	60	53	54	53	57	54	55	55	55	55
3	65	63	55	56	56	59	57	57	57	57
4	74	66	63	57	57	56	61	58	58	58
5	78	79	70	67	60	61	61	65	62	62
6	60	79	79	71	69	61	62	61	65	62
7	75	61	81	81	72	70	62	63	62	66
8	68	79	65	84	84	75	72	64	65	64
9	61	73	84	69	90	90	80	78	69	70
10	51	62	74	86	69	91	92	81	79	70
11	73	52	63	76	87	72	94	94	84	81
12	68	76	54	66	78	90	73	96	97	87
K - 12 Total	838	848	850	875	886	887	877	880	861	840
Grand Total	858	868	870	895	906	907	897	900	881	860

Source: Woolpert

Projected Enrollment - High - Colonial Hills Boundary

Grade	2025-26	2026-27	2027-28	2028-29	2029-30	2030-31	2031-32	2032-33	2033-34	2034-35
PS	20	20	20	20	20	20	20	20	20	20
K - 5	382	366	350	342	337	338	342	343	340	340
6 - 8	203	219	225	236	225	206	196	188	192	192
9 - 12	253	263	275	297	324	343	339	349	329	308
K - 12 Total	838	848	850	875	886	887	877	880	861	840
Grand Total	858	868	870	895	906	907	897	900	881	860

Source: Woolpert

EVENING STREET BOUNDARY

Historical Enrollment - Evening Street Boundary

Grade	2015-16	2016-17	2017-18	2018-19	2019-20	2020-21	2021-22	2022-23	2023-24	2024-25
PS	16	15	14	12	18	11	14	13	11	17
K	91	72	89	97	94	75	80	80	78	54
1	75	95	84	83	97	90	83	77	83	83
2	87	76	94	78	88	98	95	85	83	82
3	88	85	74	95	86	80	98	96	82	80
4	73	93	86	73	97	82	78	98	98	86
5	75	73	94	89	76	94	79	78	100	97
6	79	76	72	91	87	71	95	79	89	97
7	72	79	81	70	94	82	66	94	81	87
8	69	72	80	81	70	90	89	68	96	79
9	68	71	75	77	81	66	82	87	72	88
10	75	70	76	72	76	79	64	83	86	74
11	66	75	76	78	76	75	78	64	91	86
12	67	68	77	68	77	67	76	75	67	86
K - 12 Total	985	1,005	1,058	1,052	1,099	1,049	1,063	1,064	1,106	1,079
Grand Total	1,001	1,020	1,072	1,064	1,117	1,060	1,077	1,077	1,117	1,096

Source: Worthington Schools Student Data, October Count

Historical Enrollment - Evening Street Boundary

Grade	2015-16	2016-17	2017-18	2018-19	2019-20	2020-21	2021-22	2022-23	2023-24	2024-25
PS	16	15	14	12	18	11	14	13	11	17
K - 5	489	494	521	515	538	519	513	514	524	482
6 - 8	220	227	233	242	251	243	250	241	266	263
9 - 12	276	284	304	295	310	287	300	309	316	334
K - 12 Total	985	1,005	1,058	1,052	1,099	1,049	1,063	1,064	1,106	1,079
Grand Total	1,001	1,020	1,072	1,064	1,117	1,060	1,077	1,077	1,117	1,096

Source: Worthington Schools Student Data, October Count

Projected Enrollment - Recommended - Evening Street Boundary

Grade	2025-26	2026-27	2027-28	2028-29	2029-30	2030-31	2031-32	2032-33	2033-34	2034-35
PS	17	17	17	17	17	17	17	17	17	17
K	66	68	69	59	65	65	65	65	65	65
1	56	69	71	72	61	68	68	68	68	68
2	85	58	70	72	73	63	70	70	70	70
3	80	82	56	68	70	71	61	67	67	67
4	81	81	84	57	69	71	72	62	69	69
5	86	81	81	84	57	69	71	72	62	68
6	98	87	82	82	85	57	70	72	73	63
7	96	97	86	81	81	83	57	69	71	72
8	88	97	98	87	82	82	85	57	70	72
9	77	86	94	95	84	80	79	82	56	68
10	89	77	86	95	96	85	80	80	83	56
11	74	89	78	87	96	97	86	81	80	83
12	84	73	87	76	85	93	94	84	79	79
K - 12 Total	1,060	1,045	1,042	1,015	1,004	984	958	929	913	900
Grand Total	1,077	1,062	1,059	1,032	1,021	1,001	975	946	930	917

Source: Woolpert

Projected Enrollment - Recommended - Evening Street Boundary

Grade	2025-26	2026-27	2027-28	2028-29	2029-30	2030-31	2031-32	2032-33	2033-34	2034-35
PS	17	17	17	17	17	17	17	17	17	17
K - 5	454	439	431	412	395	407	407	404	401	407
6 - 8	282	281	266	250	248	222	212	198	214	207
9 - 12	324	325	345	353	361	355	339	327	298	286
K - 12 Total	1,060	1,045	1,042	1,015	1,004	984	958	929	913	900
Grand Total	1,077	1,062	1,059	1,032	1,021	1,001	975	946	930	917

Source: Woolpert

Projected Enrollment - Moderate - Evening Street Boundary

Grade	2025-26	2026-27	2027-28	2028-29	2029-30	2030-31	2031-32	2032-33	2033-34	2034-35
PS	17	17	17	17	17	17	17	17	17	17
K	65	67	68	58	64	64	64	64	64	64
1	56	68	70	71	60	67	67	67	67	67
2	84	58	68	70	71	61	68	68	68	68
3	80	81	56	66	68	69	59	65	65	65
4	81	81	83	57	67	69	70	61	67	67
5	86	81	81	83	57	67	69	70	61	66
6	98	87	82	82	84	57	68	70	71	61
7	96	97	86	81	81	82	57	67	69	70
8	88	97	98	87	82	82	84	57	68	70
9	77	87	95	95	84	81	80	82	56	67
10	89	77	87	96	96	85	81	81	83	56
11	74	89	78	88	97	97	86	82	81	83
12	84	73	87	76	86	94	95	84	80	80
K - 12 Total	1,058	1,043	1,039	1,010	997	975	948	918	900	884
Grand Total	1,075	1,060	1,056	1,027	1,014	992	965	935	917	901

Source: Woolpert

Projected Enrollment - Moderate - Evening Street Boundary

Grade	2025-26	2026-27	2027-28	2028-29	2029-30	2030-31	2031-32	2032-33	2033-34	2034-35
PS	17	17	17	17	17	17	17	17	17	17
K - 5	452	436	426	405	387	397	397	395	392	397
6 - 8	282	281	266	250	247	221	209	194	208	201
9 - 12	324	326	347	355	363	357	342	329	300	286
K - 12 Total	1,058	1,043	1,039	1,010	997	975	948	918	900	884
Grand Total	1,075	1,060	1,056	1,027	1,014	992	965	935	917	901

Source: Woolpert

Projected Enrollment - Low - Evening Street Boundary

Grade	2025-26	2026-27	2027-28	2028-29	2029-30	2030-31	2031-32	2032-33	2033-34	2034-35
PS	17	17	17	17	17	17	17	17	17	17
K	64	66	67	57	63	63	63	63	63	63
1	56	66	69	69	59	66	66	66	66	66
2	84	57	66	68	69	60	66	66	66	66
3	80	81	55	64	66	67	58	63	63	63
4	81	81	83	56	65	67	68	59	65	65
5	86	81	81	82	55	65	67	68	59	64
6	98	86	81	81	83	55	66	68	69	59
7	96	96	85	80	80	81	55	65	67	68
8	88	97	97	86	81	81	83	55	66	68
9	77	86	94	95	83	79	78	80	54	64
10	89	77	86	94	95	84	79	79	80	54
11	74	88	77	86	95	95	84	79	78	80
12	84	72	86	75	84	91	92	82	77	77
K - 12 Total	1,057	1,034	1,027	993	978	954	925	893	873	857
Grand Total	1,074	1,051	1,044	1,010	995	971	942	910	890	874

Source: Woolpert

Projected Enrollment - Low - Evening Street Boundary

Grade	2025-26	2026-27	2027-28	2028-29	2029-30	2030-31	2031-32	2032-33	2033-34	2034-35
PS	17	17	17	17	17	17	17	17	17	17
K - 5	451	432	421	396	377	388	388	385	382	387
6 - 8	282	279	263	247	244	217	204	188	202	195
9 - 12	324	323	343	350	357	349	333	320	289	275
K - 12 Total	1,057	1,034	1,027	993	978	954	925	893	873	857
Grand Total	1,074	1,051	1,044	1,010	995	971	942	910	890	874

Source: Woolpert

Projected Enrollment - High - Evening Street Boundary

Grade	2025-26	2026-27	2027-28	2028-29	2029-30	2030-31	2031-32	2032-33	2033-34	2034-35
PS	17	17	17	17	17	17	17	17	17	17
K	66	68	69	59	65	65	65	65	65	65
1	56	69	71	72	61	68	68	68	68	68
2	85	58	70	72	73	63	70	70	70	70
3	80	82	56	68	70	71	61	67	67	67
4	81	82	84	58	70	72	73	63	70	70
5	86	82	82	85	58	70	72	73	63	69
6	98	87	83	83	86	58	71	73	74	64
7	96	97	87	82	82	84	58	70	72	73
8	88	98	99	88	83	83	86	58	71	73
9	78	87	95	96	86	82	81	84	58	70
10	90	78	87	97	98	87	82	82	85	58
11	74	90	80	89	99	100	89	84	83	86
12	84	74	89	78	87	96	97	87	82	82
K - 12 Total	1,062	1,052	1,052	1,027	1,018	999	973	944	928	915
Grand Total	1,079	1,069	1,069	1,044	1,035	1,016	990	961	945	932

Source: Woolpert

Projected Enrollment - High - Evening Street Boundary

Grade	2025-26	2026-27	2027-28	2028-29	2029-30	2030-31	2031-32	2032-33	2033-34	2034-35
PS	17	17	17	17	17	17	17	17	17	17
K - 5	454	441	432	414	397	409	409	406	403	409
6 - 8	282	282	269	253	251	225	215	201	217	210
9 - 12	326	329	351	360	370	365	349	337	308	296
K - 12 Total	1,062	1,052	1,052	1,027	1,018	999	973	944	928	915
Grand Total	1,079	1,069	1,069	1,044	1,035	1,016	990	961	945	932

Source: Woolpert

GRANBY BOUNDARY

Historical Enrollment - Granby Boundary

Grade	2015-16	2016-17	2017-18	2018-19	2019-20	2020-21	2021-22	2022-23	2023-24	2024-25
PS	27	31	39	37	33	28	28	29	38	37
K	60	75	49	72	80	63	56	74	52	64
1	61	67	84	52	85	75	72	60	87	49
2	67	66	64	83	56	84	75	73	60	87
3	73	61	67	62	80	63	86	73	78	59
4	60	75	61	63	63	77	68	87	73	78
5	68	59	77	65	67	52	74	74	88	73
6	67	70	65	81	65	65	51	79	73	83
7	68	63	75	71	72	64	69	53	82	71
8	60	73	66	79	76	77	65	67	58	86
9	77	61	80	63	79	70	78	64	63	61
10	65	82	58	86	62	75	73	77	67	65
11	74	64	87	56	83	63	74	69	80	66
12	61	74	66	87	56	81	65	74	69	83
K - 12 Total	861	890	899	920	924	909	906	924	930	925
Grand Total	888	921	938	957	957	937	934	953	968	962

Source: Worthington Schools Student Data, October Count

Historical Enrollment - Granby Boundary

Grade	2015-16	2016-17	2017-18	2018-19	2019-20	2020-21	2021-22	2022-23	2023-24	2024-25
PS	27	31	39	37	33	28	28	29	38	37
K - 5	389	403	402	397	431	414	431	441	438	410
6 - 8	195	206	206	231	213	206	185	199	213	240
9 - 12	277	281	291	292	280	289	290	284	279	275
K - 12 Total	861	890	899	920	924	909	906	924	930	925
Grand Total	888	921	938	957	957	937	934	953	968	962

Source: Worthington Schools Student Data, October Count

Projected Enrollment - Recommended - Granby Boundary

Grade	2025-26	2026-27	2027-28	2028-29	2029-30	2030-31	2031-32	2032-33	2033-34	2034-35
PS	37	37	37	37	37	37	37	37	37	37
K	60	61	55	56	57	57	57	57	57	57
1	67	63	64	58	59	61	61	61	61	61
2	49	67	63	64	58	59	61	61	61	61
3	87	49	68	63	64	58	60	61	61	61
4	59	87	49	68	63	64	58	60	61	61
5	78	59	88	49	68	64	65	59	60	61
6	72	78	59	87	49	67	63	64	58	59
7	84	73	78	59	88	49	68	64	65	59
8	75	88	77	82	62	92	52	71	67	68
9	86	74	88	76	82	62	92	52	71	67
10	63	89	77	91	79	85	64	95	53	74
11	65	63	88	76	90	78	84	64	94	53
12	67	66	64	90	78	92	80	86	65	96
K - 12 Total	912	917	918	919	897	888	865	855	834	838
Grand Total	949	954	955	956	934	925	902	892	871	875

Source: Woolpert

Projected Enrollment - Recommended - Granby Boundary

Grade	2025-26	2026-27	2027-28	2028-29	2029-30	2030-31	2031-32	2032-33	2033-34	2034-35
PS	37	37	37	37	37	37	37	37	37	37
K - 5	400	386	387	358	369	363	362	359	361	362
6 - 8	231	239	214	228	199	208	183	199	190	186
9 - 12	281	292	317	333	329	317	320	297	283	290
K - 12 Total	912	917	918	919	897	888	865	855	834	838
Grand Total	949	954	955	956	934	925	902	892	871	875

Source: Woolpert

Projected Enrollment - Moderate - Granby Boundary

Grade	2025-26	2026-27	2027-28	2028-29	2029-30	2030-31	2031-32	2032-33	2033-34	2034-35
PS	37	37	37	37	37	37	37	37	37	37
K	59	60	54	55	56	56	56	56	56	56
1	67	62	63	57	58	60	60	60	60	60
2	49	66	61	62	57	58	59	59	59	59
3	87	49	67	61	62	57	58	59	59	59
4	59	87	49	68	62	63	57	59	60	60
5	78	59	88	49	68	63	63	58	59	60
6	72	78	59	87	49	66	61	62	57	58
7	84	73	78	59	88	49	67	62	63	58
8	75	88	77	82	62	92	52	71	65	66
9	86	74	89	76	82	62	93	52	71	66
10	63	89	78	92	79	85	64	96	53	74
11	65	63	88	77	91	78	84	65	95	53
12	67	66	64	90	78	93	80	86	65	97
K - 12 Total	911	914	915	915	892	882	854	845	822	826
Grand Total	948	951	952	952	929	919	891	882	859	863

Source: Woolpert

Projected Enrollment - Moderate - Granby Boundary

Grade	2025-26	2026-27	2027-28	2028-29	2029-30	2030-31	2031-32	2032-33	2033-34	2034-35
PS	37	37	37	37	37	37	37	37	37	37
K - 5	399	383	382	352	363	357	353	351	353	354
6 - 8	231	239	214	228	199	207	180	195	185	182
9 - 12	281	292	319	335	330	318	321	299	284	290
K - 12 Total	911	914	915	915	892	882	854	845	822	826
Grand Total	948	951	952	952	929	919	891	882	859	863

Source: Woolpert

Projected Enrollment - Low - Granby Boundary

Grade	2025-26	2026-27	2027-28	2028-29	2029-30	2030-31	2031-32	2032-33	2033-34	2034-35
PS	37	37	37	37	37	37	37	37	37	37
K	58	59	53	54	55	55	55	55	55	55
1	67	61	62	56	57	59	59	59	59	59
2	48	65	60	61	55	56	58	58	58	58
3	87	48	66	60	61	55	57	58	58	58
4	59	87	48	66	60	61	55	57	58	58
5	78	59	88	48	66	60	61	56	57	58
6	72	77	58	86	48	65	59	60	55	55
7	84	72	77	58	87	48	66	60	61	55
8	75	88	76	81	61	91	51	69	63	64
9	86	74	88	76	81	62	91	51	69	63
10	63	89	77	91	78	84	63	93	51	71
11	65	62	87	75	89	77	82	63	92	51
12	67	65	63	89	77	90	78	84	63	93
K - 12 Total	909	906	903	901	875	863	835	823	799	798
Grand Total	946	943	940	938	912	900	872	860	836	835

Source: Woolpert

Projected Enrollment - Low - Granby Boundary

Grade	2025-26	2026-27	2027-28	2028-29	2029-30	2030-31	2031-32	2032-33	2033-34	2034-35
PS	37	37	37	37	37	37	37	37	37	37
K - 5	397	379	377	345	354	346	345	343	345	346
6 - 8	231	237	211	225	196	204	176	189	179	174
9 - 12	281	290	315	331	325	313	314	291	275	278
K - 12 Total	909	906	903	901	875	863	835	823	799	798
Grand Total	946	943	940	938	912	900	872	860	836	835

Source: Woolpert

Projected Enrollment - High - Granby Boundary

Grade	2025-26	2026-27	2027-28	2028-29	2029-30	2030-31	2031-32	2032-33	2033-34	2034-35
PS	37	37	37	37	37	37	37	37	37	37
K	60	61	55	56	57	57	57	57	57	57
1	67	63	64	58	59	61	61	61	61	61
2	49	67	63	64	58	59	61	61	61	61
3	87	49	68	63	64	58	60	61	61	61
4	59	88	49	69	64	65	58	61	62	62
5	78	59	89	49	69	65	66	60	61	62
6	72	78	60	88	49	68	64	65	59	60
7	84	73	79	60	89	50	69	65	66	60
8	75	89	78	83	63	94	53	73	68	69
9	87	75	89	77	84	63	94	53	73	69
10	63	90	78	93	81	87	66	98	54	77
11	65	64	90	78	92	80	87	66	98	55
12	67	67	65	92	80	95	83	89	68	100
K - 12 Total	913	923	927	930	909	902	879	870	849	854
Grand Total	950	960	964	967	946	939	916	907	886	891

Source: Woolpert

Projected Enrollment - High - Granby Boundary

Grade	2025-26	2026-27	2027-28	2028-29	2029-30	2030-31	2031-32	2032-33	2033-34	2034-35
PS	37	37	37	37	37	37	37	37	37	37
K - 5	400	387	388	359	371	365	363	361	363	364
6 - 8	231	240	217	231	201	212	186	203	193	189
9 - 12	282	296	322	340	337	325	330	306	293	301
K - 12 Total	913	923	927	930	909	902	879	870	849	854
Grand Total	950	960	964	967	946	939	916	907	886	891

Source: Woolpert

LIBERTY BOUNDARY

Historical Enrollment - Liberty Boundary

Grade	2015-16	2016-17	2017-18	2018-19	2019-20	2020-21	2021-22	2022-23	2023-24	2024-25
PS	43	41	59	64	64	42	55	51	57	52
K	62	68	50	77	84	64	78	64	78	66
1	79	64	72	50	83	74	67	81	64	81
2	64	73	62	67	55	79	76	70	78	63
3	91	65	75	62	74	53	78	77	65	77
4	78	92	61	76	68	73	51	72	74	67
5	65	74	87	63	75	67	80	50	69	71
6	87	67	79	89	66	73	68	79	48	73
7	67	80	70	81	92	71	69	75	78	54
8	67	66	73	72	83	91	70	65	69	75
9	84	63	66	77	76	87	92	69	72	72
10	64	85	60	66	79	72	91	91	61	66
11	63	63	88	63	69	83	75	87	82	67
12	73	68	70	92	65	68	80	82	84	84
K - 12 Total	944	928	913	935	969	955	975	962	922	916
Grand Total	987	969	972	999	1,033	997	1,030	1,013	979	968

Source: Worthington Schools Student Data, October Count

Historical Enrollment - Liberty Boundary

Grade	2015-16	2016-17	2017-18	2018-19	2019-20	2020-21	2021-22	2022-23	2023-24	2024-25
PS	43	41	59	64	64	42	55	51	57	52
K - 5	439	436	407	395	439	410	430	414	428	425
6 - 8	221	213	222	242	241	235	207	219	195	202
9 - 12	284	279	284	298	289	310	338	329	299	289
K - 12 Total	944	928	913	935	969	955	975	962	922	916
Grand Total	987	969	972	999	1,033	997	1,030	1,013	979	968

Source: Worthington Schools Student Data, October Count

Projected Enrollment - Recommended - Liberty Boundary

Grade	2025-26	2026-27	2027-28	2028-29	2029-30	2030-31	2031-32	2032-33	2033-34	2034-35
PS	52	52	52	52	52	52	52	52	52	52
K	71	82	74	75	77	77	77	77	77	77
1	68	73	84	77	77	79	79	79	79	79
2	80	67	72	83	75	76	78	78	78	78
3	62	78	66	71	82	74	75	77	77	77
4	76	61	77	65	70	81	73	74	76	76
5	64	73	59	74	63	67	77	70	71	73
6	72	65	74	60	75	63	68	78	71	72
7	77	76	69	78	63	80	67	72	83	75
8	51	73	72	66	74	60	76	64	68	79
9	78	54	77	76	68	78	63	79	67	71
10	67	72	50	71	70	63	72	58	73	62
11	67	68	74	51	72	71	64	73	59	74
12	68	68	69	75	51	73	72	65	74	60
K - 12 Total	901	910	917	922	917	942	941	944	953	953
Grand Total	953	962	969	974	969	994	993	996	1,005	1,005

Source: Woolpert

Projected Enrollment - Recommended - Liberty Boundary

Grade	2025-26	2026-27	2027-28	2028-29	2029-30	2030-31	2031-32	2032-33	2033-34	2034-35
PS	52	52	52	52	52	52	52	52	52	52
K - 5	421	434	432	445	444	454	459	455	458	460
6 - 8	200	214	215	204	212	203	211	214	222	226
9 - 12	280	262	270	273	261	285	271	275	273	267
K - 12 Total	901	910	917	922	917	942	941	944	953	953
Grand Total	953	962	969	974	969	994	993	996	1,005	1,005

Source: Woolpert

Projected Enrollment - Moderate - Liberty Boundary

Grade	2025-26	2026-27	2027-28	2028-29	2029-30	2030-31	2031-32	2032-33	2033-34	2034-35
PS	52	52	52	52	52	52	52	52	52	52
K	70	81	73	74	76	76	76	76	76	76
1	68	72	83	76	76	78	78	78	78	78
2	79	66	70	81	73	74	76	76	76	76
3	62	77	65	69	80	72	73	75	75	75
4	76	61	76	65	68	79	71	72	74	74
5	64	73	59	73	63	65	75	68	69	71
6	72	65	74	60	74	62	66	76	69	70
7	77	76	69	78	63	79	66	70	81	73
8	51	73	72	66	74	60	76	64	66	77
9	78	54	78	76	68	79	63	79	67	70
10	67	72	50	72	70	63	72	58	73	62
11	67	68	74	51	73	71	64	74	59	74
12	68	68	69	75	51	73	72	65	74	60
K - 12 Total	899	906	912	916	909	931	928	931	937	936
Grand Total	951	958	964	968	961	983	980	983	989	988

Source: Woolpert

Projected Enrollment - Moderate - Liberty Boundary

Grade	2025-26	2026-27	2027-28	2028-29	2029-30	2030-31	2031-32	2032-33	2033-34	2034-35
PS	52	52	52	52	52	52	52	52	52	52
K - 5	419	430	426	438	436	444	449	445	448	450
6 - 8	200	214	215	204	211	201	208	210	216	220
9 - 12	280	262	271	274	262	286	271	276	273	266
K - 12 Total	899	906	912	916	909	931	928	931	937	936
Grand Total	951	958	964	968	961	983	980	983	989	988

Source: Woolpert

Projected Enrollment - Low - Liberty Boundary

Grade	2025-26	2026-27	2027-28	2028-29	2029-30	2030-31	2031-32	2032-33	2033-34	2034-35
PS	52	52	52	52	52	52	52	52	52	52
K	69	80	72	73	75	75	75	75	75	75
1	68	70	81	74	74	76	76	76	76	76
2	79	65	68	79	71	72	74	74	74	74
3	62	77	64	67	78	70	71	73	73	73
4	76	61	76	63	66	77	69	70	72	72
5	64	73	59	72	61	63	73	66	67	69
6	72	64	73	59	73	61	64	73	67	68
7	77	75	68	77	62	78	65	68	78	70
8	51	73	72	65	73	59	74	62	64	74
9	78	54	77	76	68	77	62	77	65	67
10	67	72	50	71	69	62	71	57	71	60
11	67	67	73	51	71	70	63	72	58	71
12	68	67	68	74	50	72	70	63	72	58
K - 12 Total	898	898	901	901	891	912	907	906	912	907
Grand Total	950	950	953	953	943	964	959	958	964	959

Source: Woolpert

Projected Enrollment - Low - Liberty Boundary

Grade	2025-26	2026-27	2027-28	2028-29	2029-30	2030-31	2031-32	2032-33	2033-34	2034-35
PS	52	52	52	52	52	52	52	52	52	52
K - 5	418	426	420	428	425	433	438	434	437	439
6 - 8	200	212	213	201	208	198	203	203	209	212
9 - 12	280	260	268	272	258	281	266	269	266	256
K - 12 Total	898	898	901	901	891	912	907	906	912	907
Grand Total	950	950	953	953	943	964	959	958	964	959

Source: Woolpert

Projected Enrollment - High - Liberty Boundary

Grade	2025-26	2026-27	2027-28	2028-29	2029-30	2030-31	2031-32	2032-33	2033-34	2034-35
PS	52	52	52	52	52	52	52	52	52	52
K	71	82	74	75	77	77	77	77	77	77
1	68	73	84	77	77	79	79	79	79	79
2	80	67	72	83	75	76	78	78	78	78
3	62	78	66	71	82	74	75	77	77	77
4	76	61	77	66	71	82	74	75	77	77
5	64	74	60	75	64	68	78	71	72	74
6	72	65	75	61	76	64	69	79	72	73
7	77	76	69	79	64	81	68	73	84	76
8	51	74	73	67	75	61	77	65	69	80
9	79	55	78	77	69	80	65	81	69	73
10	67	73	51	72	71	64	74	60	75	64
11	67	69	76	52	74	73	66	76	61	77
12	68	69	70	77	52	75	74	67	77	63
K - 12 Total	902	916	925	932	927	954	954	958	967	968
Grand Total	954	968	977	984	979	1,006	1,006	1,010	1,019	1,020

Source: Woolpert

Projected Enrollment - High - Liberty Boundary

Grade	2025-26	2026-27	2027-28	2028-29	2029-30	2030-31	2031-32	2032-33	2033-34	2034-35
PS	52	52	52	52	52	52	52	52	52	52
K - 5	421	435	433	447	446	456	461	457	460	462
6 - 8	200	215	217	207	215	206	214	217	225	229
9 - 12	281	266	275	278	266	292	279	284	282	277
K - 12 Total	902	916	925	932	927	954	954	958	967	968
Grand Total	954	968	977	984	979	1,006	1,006	1,010	1,019	1,020

Source: Woolpert

SLATE HILL BOUNDARY

Historical Enrollment - Slate Hill Boundary

Grade	2015-16	2016-17	2017-18	2018-19	2019-20	2020-21	2021-22	2022-23	2023-24	2024-25
PS	16	24	21	20	27	18	34	27	34	37
K	67	63	77	68	77	81	72	76	69	75
1	95	72	65	82	68	80	78	77	89	64
2	96	94	56	57	87	69	85	79	79	95
3	81	91	89	56	60	83	62	94	77	84
4	87	80	78	82	63	59	86	70	80	83
5	77	85	78	78	92	67	61	90	67	80
6	74	73	80	72	82	95	67	67	80	65
7	88	69	67	83	72	79	95	71	72	88
8	71	87	71	60	82	68	79	105	74	77
9	88	62	88	72	65	85	77	82	105	81
10	55	84	58	87	74	62	86	79	71	109
11	62	54	83	58	89	71	71	85	69	68
12	69	61	56	80	60	91	77	78	85	65
K - 12 Total	1,010	975	946	935	971	990	996	1,053	1,017	1,034
Grand Total	1,026	999	967	955	998	1,008	1,030	1,080	1,051	1,071

Source: Worthington Schools Student Data, October Count

Historical Enrollment - Slate Hill Boundary

Grade	2015-16	2016-17	2017-18	2018-19	2019-20	2020-21	2021-22	2022-23	2023-24	2024-25
PS	16	24	21	20	27	18	34	27	34	37
K - 5	503	485	443	423	447	439	444	486	461	481
6 - 8	233	229	218	215	236	242	241	243	226	230
9 - 12	274	261	285	297	288	309	311	324	330	323
K - 12 Total	1,010	975	946	935	971	990	996	1,053	1,017	1,034
Grand Total	1,026	999	967	955	998	1,008	1,030	1,080	1,051	1,071

Source: Worthington Schools Student Data, October Count

Projected Enrollment - Recommended - Slate Hill Boundary

Grade	2025-26	2026-27	2027-28	2028-29	2029-30	2030-31	2031-32	2032-33	2033-34	2034-35
PS	37	37	37	37	37	37	37	37	37	37
K	70	73	71	69	71	71	71	71	71	71
1	77	72	75	73	71	73	73	73	73	73
2	66	79	74	78	75	73	75	75	75	75
3	98	68	82	77	80	78	76	78	78	78
4	87	102	71	85	80	83	81	79	81	81
5	83	87	102	71	86	80	83	81	79	81
6	78	81	86	100	70	84	78	82	80	77
7	70	85	88	92	108	75	90	85	88	86
8	94	75	90	94	99	115	80	96	90	94
9	81	99	79	95	99	104	122	84	102	95
10	82	82	100	79	96	100	105	123	85	103
11	106	79	79	97	77	93	97	102	119	82
12	69	106	80	80	97	78	94	97	102	120
K - 12 Total	1,061	1,088	1,077	1,090	1,109	1,107	1,125	1,126	1,123	1,116
Grand Total	1,098	1,125	1,114	1,127	1,146	1,144	1,162	1,163	1,160	1,153

Source: Woolpert

Projected Enrollment - Recommended - Slate Hill Boundary

Grade	2025-26	2026-27	2027-28	2028-29	2029-30	2030-31	2031-32	2032-33	2033-34	2034-35
PS	37	37	37	37	37	37	37	37	37	37
K - 5	481	481	475	453	463	458	459	457	457	459
6 - 8	242	241	264	286	277	274	248	263	258	257
9 - 12	338	366	338	351	369	375	418	406	408	400
K - 12 Total	1,061	1,088	1,077	1,090	1,109	1,107	1,125	1,126	1,123	1,116
Grand Total	1,098	1,125	1,114	1,127	1,146	1,144	1,162	1,163	1,160	1,153

Source: Woolpert

Projected Enrollment - Moderate - Slate Hill Boundary

Grade	2025-26	2026-27	2027-28	2028-29	2029-30	2030-31	2031-32	2032-33	2033-34	2034-35
PS	37	37	37	37	37	37	37	37	37	37
K	69	72	70	68	70	70	70	70	70	70
1	77	71	74	72	70	72	72	72	72	72
2	65	78	72	76	73	71	73	73	73	73
3	98	67	81	75	78	76	74	76	76	76
4	87	102	71	85	78	81	79	77	79	79
5	83	87	102	71	86	78	81	79	77	79
6	78	81	86	100	69	83	76	80	78	75
7	70	85	88	92	108	74	89	83	86	84
8	94	75	90	94	99	115	79	95	88	92
9	81	100	80	95	100	105	123	84	102	93
10	82	82	101	80	96	100	106	124	85	103
11	106	79	79	98	78	93	97	103	120	82
12	69	106	80	80	98	79	95	97	103	121
K - 12 Total	1,059	1,085	1,074	1,086	1,103	1,097	1,114	1,113	1,109	1,099
Grand Total	1,096	1,122	1,111	1,123	1,140	1,134	1,151	1,150	1,146	1,136

Source: Woolpert

Projected Enrollment - Moderate - Slate Hill Boundary

Grade	2025-26	2026-27	2027-28	2028-29	2029-30	2030-31	2031-32	2032-33	2033-34	2034-35
PS	37	37	37	37	37	37	37	37	37	37
K - 5	479	477	470	447	455	448	449	447	447	449
6 - 8	242	241	264	286	276	272	244	258	252	251
9 - 12	338	367	340	353	372	377	421	408	410	399
K - 12 Total	1,059	1,085	1,074	1,086	1,103	1,097	1,114	1,113	1,109	1,099
Grand Total	1,096	1,122	1,111	1,123	1,140	1,134	1,151	1,150	1,146	1,136

Source: Woolpert

Projected Enrollment - Low - Slate Hill Boundary

Grade	2025-26	2026-27	2027-28	2028-29	2029-30	2030-31	2031-32	2032-33	2033-34	2034-35
PS	37	37	37	37	37	37	37	37	37	37
K	68	71	69	67	69	69	69	69	69	69
1	76	69	72	70	69	70	70	70	70	70
2	65	77	70	74	71	69	71	71	71	71
3	98	67	80	73	76	74	72	74	74	74
4	87	102	70	83	76	79	77	75	77	77
5	83	87	102	70	84	76	78	77	75	77
6	78	80	85	99	68	81	73	77	75	72
7	70	84	87	91	107	73	87	80	83	81
8	94	75	89	93	98	114	78	93	84	88
9	81	99	79	95	98	103	121	82	99	89
10	82	82	100	79	95	99	103	121	82	99
11	105	78	78	96	76	91	95	100	116	79
12	69	105	79	79	96	77	92	95	100	117
K - 12 Total	1,056	1,076	1,060	1,069	1,083	1,075	1,086	1,084	1,075	1,063
Grand Total	1,093	1,113	1,097	1,106	1,120	1,112	1,123	1,121	1,112	1,100

Source: Woolpert

Projected Enrollment - Low - Slate Hill Boundary

Grade	2025-26	2026-27	2027-28	2028-29	2029-30	2030-31	2031-32	2032-33	2033-34	2034-35
PS	37	37	37	37	37	37	37	37	37	37
K - 5	477	473	463	437	445	437	437	436	436	438
6 - 8	242	239	261	283	273	268	238	250	242	241
9 - 12	337	364	336	349	365	370	411	398	397	384
K - 12 Total	1,056	1,076	1,060	1,069	1,083	1,075	1,086	1,084	1,075	1,063
Grand Total	1,093	1,113	1,097	1,106	1,120	1,112	1,123	1,121	1,112	1,100

Source: Woolpert

Projected Enrollment - High - Slate Hill Boundary

Grade	2025-26	2026-27	2027-28	2028-29	2029-30	2030-31	2031-32	2032-33	2033-34	2034-35
PS	37	37	37	37	37	37	37	37	37	37
K	70	73	71	69	71	71	71	71	71	71
1	78	72	75	73	71	73	73	73	73	73
2	66	79	74	78	75	73	75	75	75	75
3	98	68	82	77	80	78	76	78	78	78
4	88	103	71	86	81	84	82	80	82	82
5	83	88	103	71	87	81	84	82	80	82
6	78	81	87	101	71	85	79	83	81	78
7	70	85	89	93	109	76	92	86	89	87
8	94	76	91	95	101	117	81	98	92	96
9	82	100	80	96	101	106	125	86	105	97
10	83	83	102	81	98	102	108	127	87	107
11	107	80	81	99	79	96	100	106	124	85
12	69	107	81	82	100	80	97	100	106	125
K - 12 Total	1,066	1,095	1,087	1,101	1,124	1,122	1,143	1,145	1,143	1,136
Grand Total	1,103	1,132	1,124	1,138	1,161	1,159	1,180	1,182	1,180	1,173

Source: Woolpert

Projected Enrollment - High - Slate Hill Boundary

Grade	2025-26	2026-27	2027-28	2028-29	2029-30	2030-31	2031-32	2032-33	2033-34	2034-35
PS	37	37	37	37	37	37	37	37	37	37
K - 5	483	483	476	454	465	460	461	459	459	461
6 - 8	242	242	267	289	281	278	252	267	262	261
9 - 12	341	370	344	358	378	384	430	419	422	414
K - 12 Total	1,066	1,095	1,087	1,101	1,124	1,122	1,143	1,145	1,143	1,136
Grand Total	1,103	1,132	1,124	1,138	1,161	1,159	1,180	1,182	1,180	1,173

Source: Woolpert

WILSON HILL BOUNDARY

Historical Enrollment - Wilson Hill Boundary

Grade	2015-16	2016-17	2017-18	2018-19	2019-20	2020-21	2021-22	2022-23	2023-24	2024-25
PS	15	13	17	21	31	13	18	27	24	26
K	57	70	48	64	71	67	79	77	70	64
1	55	60	74	54	77	62	75	71	75	78
2	78	51	66	77	54	75	59	78	72	74
3	73	89	57	64	77	51	74	61	80	68
4	72	69	95	56	65	78	51	72	66	74
5	71	73	65	89	55	61	78	56	71	73
6	76	79	72	65	86	59	59	78	53	69
7	84	83	82	72	70	85	61	61	81	58
8	76	85	86	83	79	64	79	58	58	82
9	86	78	83	83	83	82	62	86	62	58
10	83	90	82	86	83	81	81	66	94	63
11	81	76	87	79	84	78	75	81	64	85
12	70	82	80	90	71	87	77	79	83	70
K - 12 Total	962	985	977	962	955	930	910	924	929	916
Grand Total	977	998	994	983	986	943	928	951	953	942

Source: Worthington Schools Student Data, October Count

Historical Enrollment - Wilson Hill Boundary

Grade	2015-16	2016-17	2017-18	2018-19	2019-20	2020-21	2021-22	2022-23	2023-24	2024-25
PS	15	13	17	21	31	13	18	27	24	26
K - 5	406	412	405	404	399	394	416	415	434	431
6 - 8	236	247	240	220	235	208	199	197	192	209
9 - 12	320	326	332	338	321	328	295	312	303	276
K - 12 Total	962	985	977	962	955	930	910	924	929	916
Grand Total	977	998	994	983	986	943	928	951	953	942

Source: Worthington Schools Student Data, October Count

Projected Enrollment - Recommended - Wilson Hill Boundary

Grade	2025-26	2026-27	2027-28	2028-29	2029-30	2030-31	2031-32	2032-33	2033-34	2034-35
PS	26	26	26	26	26	26	26	26	26	26
K	63	65	66	56	62	62	62	62	62	62
1	67	66	68	69	59	65	65	65	65	65
2	78	67	66	68	69	59	65	65	65	65
3	73	77	66	65	67	68	58	65	65	65
4	68	73	77	66	65	67	68	58	65	65
5	78	72	78	82	70	69	71	72	62	68
6	71	76	70	76	80	68	67	69	70	60
7	72	74	79	73	78	83	71	70	72	73
8	57	70	72	77	71	77	81	69	68	70
9	84	58	72	74	79	73	79	83	71	70
10	60	87	60	74	76	82	75	81	86	73
11	60	57	83	58	71	73	78	72	78	82
12	89	63	60	87	60	74	76	82	75	81
K - 12 Total	920	905	917	925	907	920	916	913	904	899
Grand Total	946	931	943	951	933	946	942	939	930	925

Source: Woolpert

Projected Enrollment - Recommended - Wilson Hill Boundary

Grade	2025-26	2026-27	2027-28	2028-29	2029-30	2030-31	2031-32	2032-33	2033-34	2034-35
PS	26	26	26	26	26	26	26	26	26	26
K - 5	427	420	421	406	392	390	389	387	384	390
6 - 8	200	220	221	226	229	228	219	208	210	203
9 - 12	293	265	275	293	286	302	308	318	310	306
K - 12 Total	920	905	917	925	907	920	916	913	904	899
Grand Total	946	931	943	951	933	946	942	939	930	925

Source: Woolpert

Projected Enrollment - Moderate - Wilson Hill Boundary

Grade	2025-26	2026-27	2027-28	2028-29	2029-30	2030-31	2031-32	2032-33	2033-34	2034-35
PS	26	26	26	26	26	26	26	26	26	26
K	62	64	65	55	61	61	61	61	61	61
1	67	65	67	68	58	64	64	64	64	64
2	77	66	64	66	67	58	63	63	63	63
3	73	76	65	63	65	66	57	63	63	63
4	68	73	76	66	64	65	66	57	64	64
5	78	72	78	81	70	67	69	70	61	66
6	71	76	70	76	79	67	65	67	68	59
7	72	74	79	73	78	82	70	68	70	71
8	57	70	72	77	71	77	80	69	66	68
9	84	58	72	74	79	74	80	83	71	69
10	60	87	60	75	76	82	76	82	86	73
11	60	57	83	58	72	73	78	73	79	82
12	89	63	60	87	60	74	76	82	75	82
K - 12 Total	918	901	911	919	900	910	905	902	891	885
Grand Total	944	927	937	945	926	936	931	928	917	911

Source: Woolpert

Projected Enrollment - Moderate - Wilson Hill Boundary

Grade	2025-26	2026-27	2027-28	2028-29	2029-30	2030-31	2031-32	2032-33	2033-34	2034-35
PS	26	26	26	26	26	26	26	26	26	26
K - 5	425	416	415	399	385	381	380	378	376	381
6 - 8	200	220	221	226	228	226	215	204	204	198
9 - 12	293	265	275	294	287	303	310	320	311	306
K - 12 Total	918	901	911	919	900	910	905	902	891	885
Grand Total	944	927	937	945	926	936	931	928	917	911

Source: Woolpert

Projected Enrollment - Low - Wilson Hill Boundary

Grade	2025-26	2026-27	2027-28	2028-29	2029-30	2030-31	2031-32	2032-33	2033-34	2034-35
PS	26	26	26	26	26	26	26	26	26	26
K	61	63	64	54	60	60	60	60	60	60
1	67	64	66	67	57	63	63	63	63	63
2	77	65	63	65	66	56	62	62	62	62
3	73	76	64	62	64	65	55	62	62	62
4	68	73	76	64	62	63	64	55	62	62
5	78	72	78	80	68	65	67	68	59	64
6	71	75	69	75	78	66	63	65	66	56
7	72	73	78	72	77	81	69	66	68	68
8	57	70	72	76	70	76	79	67	64	66
9	84	58	72	74	78	72	78	81	69	66
10	60	87	60	74	75	81	74	80	83	70
11	60	56	82	57	70	72	76	71	76	79
12	89	62	59	86	59	73	74	80	73	79
K - 12 Total	917	894	903	906	884	893	884	880	867	857
Grand Total	943	920	929	932	910	919	910	906	893	883

Source: Woolpert

Projected Enrollment - Low - Wilson Hill Boundary

Grade	2025-26	2026-27	2027-28	2028-29	2029-30	2030-31	2031-32	2032-33	2033-34	2034-35
PS	26	26	26	26	26	26	26	26	26	26
K - 5	424	413	411	392	377	372	371	370	368	373
6 - 8	200	218	219	223	225	223	211	198	198	190
9 - 12	293	263	273	291	282	298	302	312	301	294
K - 12 Total	917	894	903	906	884	893	884	880	867	857
Grand Total	943	920	929	932	910	919	910	906	893	883

Source: Woolpert

Projected Enrollment - High - Wilson Hill Boundary

Grade	2025-26	2026-27	2027-28	2028-29	2029-30	2030-31	2031-32	2032-33	2033-34	2034-35
PS	26	26	26	26	26	26	26	26	26	26
K	63	65	66	56	62	62	62	62	62	62
1	67	66	68	69	59	65	65	65	65	65
2	78	67	66	68	69	59	65	65	65	65
3	73	77	66	65	67	68	58	65	65	65
4	68	74	77	67	66	68	69	58	66	66
5	78	73	79	83	71	70	72	73	63	69
6	71	76	71	77	81	69	68	70	71	61
7	72	74	80	74	79	84	72	71	73	74
8	57	70	73	78	72	78	82	70	69	71
9	85	59	73	75	80	75	81	85	73	72
10	60	88	61	75	78	84	77	83	88	76
11	60	58	85	59	73	75	80	75	81	85
12	89	64	61	89	62	76	78	85	78	84
K - 12 Total	921	911	926	935	919	933	929	927	919	915
Grand Total	947	937	952	961	945	959	955	953	945	941

Source: Woolpert

Projected Enrollment - High - Wilson Hill Boundary

Grade	2025-26	2026-27	2027-28	2028-29	2029-30	2030-31	2031-32	2032-33	2033-34	2034-35
PS	26	26	26	26	26	26	26	26	26	26
K - 5	427	422	422	408	394	392	391	388	386	392
6 - 8	200	220	224	229	232	231	222	211	213	206
9 - 12	294	269	280	298	293	310	316	328	320	317
K - 12 Total	921	911	926	935	919	933	929	927	919	915
Grand Total	947	937	952	961	945	959	955	953	945	941

Source: Woolpert

WORTHINGTON ESTATES BOUNDARY

Historical Enrollment - Worthington Estates Boundary

Grade	2015-16	2016-17	2017-18	2018-19	2019-20	2020-21	2021-22	2022-23	2023-24	2024-25
PS	26	25	28	32	34	29	32	44	53	47
K	102	105	90	117	107	89	106	98	101	95
1	95	91	97	100	113	104	95	117	100	97
2	106	90	97	103	98	106	111	101	116	96
3	97	105	90	93	101	90	100	111	99	125
4	99	102	90	93	92	92	102	98	106	93
5	85	98	95	92	97	98	93	99	106	100
6	71	91	102	95	94	90	107	85	98	114
7	74	70	94	100	98	102	104	105	102	107
8	68	76	80	90	97	95	110	103	105	106
9	84	69	68	90	90	88	107	109	103	118
10	79	82	75	76	91	94	94	108	113	107
11	75	74	79	79	80	91	98	89	101	117
12	85	76	72	76	81	83	93	99	93	106
K - 12 Total	1,120	1,129	1,129	1,204	1,239	1,222	1,320	1,322	1,343	1,381
Grand Total	1,146	1,154	1,157	1,236	1,273	1,251	1,352	1,366	1,396	1,428

Source: Worthington Schools Student Data, October Count

Historical Enrollment - Worthington Estates Boundary

Grade	2015-16	2016-17	2017-18	2018-19	2019-20	2020-21	2021-22	2022-23	2023-24	2024-25
PS	26	25	28	32	34	29	32	44	53	47
K - 5	584	591	559	598	608	579	607	624	628	606
6 - 8	213	237	276	285	289	287	321	293	305	327
9 - 12	323	301	294	321	342	356	392	405	410	448
K - 12 Total	1,120	1,129	1,129	1,204	1,239	1,222	1,320	1,322	1,343	1,381
Grand Total	1,146	1,154	1,157	1,236	1,273	1,251	1,352	1,366	1,396	1,428

Source: Worthington Schools Student Data, October Count

Projected Enrollment - Recommended - Worthington Estates Boundary

Grade	2025-26	2026-27	2027-28	2028-29	2029-30	2030-31	2031-32	2032-33	2033-34	2034-35
PS	47	47	47	47	47	47	47	47	47	47
K	94	98	95	93	95	95	95	95	95	95
1	96	95	99	96	94	96	96	96	96	96
2	97	96	95	99	96	94	96	96	96	96
3	97	98	97	95	100	97	94	97	97	97
4	120	93	93	93	92	96	93	90	93	93
5	92	119	92	92	92	91	94	92	89	92
6	101	93	120	93	94	93	92	96	93	91
7	125	111	102	132	102	103	102	101	105	102
8	110	129	115	106	136	105	106	105	104	108
9	113	118	138	123	113	146	112	114	112	111
10	122	118	122	143	127	117	151	117	118	117
11	107	122	118	122	143	127	117	151	116	118
12	122	111	127	123	128	149	133	122	157	121
K - 12 Total	1,396	1,401	1,413	1,410	1,412	1,409	1,381	1,372	1,371	1,337
Grand Total	1,443	1,448	1,460	1,457	1,459	1,456	1,428	1,419	1,418	1,384

Source: Woolpert

Projected Enrollment - Recommended - Worthington Estates Boundary

Grade	2025-26	2026-27	2027-28	2028-29	2029-30	2030-31	2031-32	2032-33	2033-34	2034-35
PS	47	47	47	47	47	47	47	47	47	47
K - 5	596	599	571	568	569	569	568	566	566	569
6 - 8	336	333	337	331	332	301	300	302	302	301
9 - 12	464	469	505	511	511	539	513	504	503	467
K - 12 Total	1,396	1,401	1,413	1,410	1,412	1,409	1,381	1,372	1,371	1,337
Grand Total	1,443	1,448	1,460	1,457	1,459	1,456	1,428	1,419	1,418	1,384

Source: Woolpert

Projected Enrollment - Moderate - Worthington Estates Boundary

Grade	2025-26	2026-27	2027-28	2028-29	2029-30	2030-31	2031-32	2032-33	2033-34	2034-35
PS	47	47	47	47	47	47	47	47	47	47
K	92	97	93	92	94	94	94	94	94	94
1	96	93	97	95	93	94	94	94	94	94
2	96	95	93	97	94	92	94	94	94	94
3	97	97	96	93	98	95	92	95	95	95
4	120	93	92	92	90	94	91	88	91	91
5	92	119	92	91	91	89	92	90	87	90
6	101	93	120	93	93	92	90	94	91	89
7	125	111	102	132	102	102	101	99	102	100
8	110	129	115	106	136	105	105	104	102	106
9	114	119	139	124	114	147	113	114	112	109
10	122	119	123	144	128	118	152	118	118	117
11	107	122	119	123	144	128	118	152	117	118
12	122	111	127	124	129	150	134	123	158	122
K - 12 Total	1,394	1,398	1,408	1,406	1,406	1,400	1,370	1,359	1,355	1,319
Grand Total	1,441	1,445	1,455	1,453	1,453	1,447	1,417	1,406	1,402	1,366

Source: Woolpert

Projected Enrollment - Moderate - Worthington Estates Boundary

Grade	2025-26	2026-27	2027-28	2028-29	2029-30	2030-31	2031-32	2032-33	2033-34	2034-35
PS	47	47	47	47	47	47	47	47	47	47
K - 5	593	594	563	560	560	558	557	555	555	558
6 - 8	336	333	337	331	331	299	296	297	295	295
9 - 12	465	471	508	515	515	543	517	507	505	466
K - 12 Total	1,394	1,398	1,408	1,406	1,406	1,400	1,370	1,359	1,355	1,319
Grand Total	1,441	1,445	1,455	1,453	1,453	1,447	1,417	1,406	1,402	1,366

Source: Woolpert

Projected Enrollment - Low - Worthington Estates Boundary

Grade	2025-26	2026-27	2027-28	2028-29	2029-30	2030-31	2031-32	2032-33	2033-34	2034-35
PS	47	47	47	47	47	47	47	47	47	47
K	91	95	92	90	92	92	92	92	92	92
1	95	92	96	93	91	93	93	93	93	93
2	96	94	90	94	91	89	91	91	91	91
3	97	96	95	90	95	92	89	92	92	92
4	120	93	91	91	87	91	88	85	88	88
5	92	119	92	90	90	86	89	87	84	87
6	101	92	119	92	92	90	87	90	87	86
7	125	110	101	131	101	100	99	95	98	96
8	110	129	114	105	135	104	103	101	98	101
9	113	118	138	122	112	145	111	111	108	104
10	121	118	122	142	126	115	149	115	114	113
11	106	120	117	121	141	125	115	148	113	114
12	121	110	125	121	126	146	130	119	153	118
K - 12 Total	1,388	1,386	1,392	1,382	1,379	1,368	1,336	1,319	1,311	1,275
Grand Total	1,435	1,433	1,439	1,429	1,426	1,415	1,383	1,366	1,358	1,322

Source: Woolpert

Projected Enrollment - Low - Worthington Estates Boundary

Grade	2025-26	2026-27	2027-28	2028-29	2029-30	2030-31	2031-32	2032-33	2033-34	2034-35
PS	47	47	47	47	47	47	47	47	47	47
K - 5	591	589	556	548	546	543	542	540	540	543
6 - 8	336	331	334	328	328	294	289	286	283	283
9 - 12	461	466	502	506	505	531	505	493	488	449
K - 12 Total	1,388	1,386	1,392	1,382	1,379	1,368	1,336	1,319	1,311	1,275
Grand Total	1,435	1,433	1,439	1,429	1,426	1,415	1,383	1,366	1,358	1,322

Source: Woolpert

Projected Enrollment - High - Worthington Estates Boundary

Grade	2025-26	2026-27	2027-28	2028-29	2029-30	2030-31	2031-32	2032-33	2033-34	2034-35
PS	47	47	47	47	47	47	47	47	47	47
K	94	98	95	93	95	95	95	95	95	95
1	97	95	99	96	94	96	96	96	96	96
2	97	97	95	99	96	94	96	96	96	96
3	97	98	98	95	100	97	94	97	97	97
4	121	94	93	94	93	97	94	91	94	94
5	92	120	93	93	93	92	95	93	90	93
6	101	93	121	94	95	94	93	97	94	92
7	125	112	103	134	103	104	104	103	107	104
8	110	130	116	107	138	107	108	107	106	110
9	114	119	140	125	115	149	115	116	115	114
10	123	120	124	146	130	120	155	121	121	121
11	108	124	120	125	147	131	121	157	121	122
12	122	112	129	126	131	154	137	126	163	126
K - 12 Total	1,401	1,412	1,426	1,427	1,430	1,430	1,403	1,395	1,395	1,360
Grand Total	1,448	1,459	1,473	1,474	1,477	1,477	1,450	1,442	1,442	1,407

Source: Woolpert

Projected Enrollment - High - Worthington Estates Boundary

Grade	2025-26	2026-27	2027-28	2028-29	2029-30	2030-31	2031-32	2032-33	2033-34	2034-35
PS	47	47	47	47	47	47	47	47	47	47
K - 5	598	602	573	570	571	571	570	568	568	571
6 - 8	336	335	340	335	336	305	305	307	307	306
9 - 12	467	475	513	522	523	554	528	520	520	483
K - 12 Total	1,401	1,412	1,426	1,427	1,430	1,430	1,403	1,395	1,395	1,360
Grand Total	1,448	1,459	1,473	1,474	1,477	1,477	1,450	1,442	1,442	1,407

Source: Woolpert

WORTHINGTON HILLS BOUNDARY

Historical Enrollment - Worthington Hills Boundary

Grade	2015-16	2016-17	2017-18	2018-19	2019-20	2020-21	2021-22	2022-23	2023-24	2024-25
PS	14	21	17	18	23	21	23	35	28	22
K	71	67	79	89	97	71	83	86	81	75
1	50	83	72	83	90	98	79	90	90	80
2	76	50	79	73	82	95	96	82	90	91
3	71	84	52	80	74	82	92	96	84	92
4	64	71	93	55	78	65	78	94	103	82
5	49	67	71	95	57	73	69	82	97	99
6	62	53	66	72	90	52	72	69	80	98
7	62	63	59	72	73	82	48	73	69	78
8	70	62	60	65	75	72	81	52	77	73
9	81	76	62	62	59	73	67	80	54	76
10	68	80	74	67	63	59	70	69	83	57
11	60	71	73	74	70	59	61	70	67	84
12	82	64	64	72	70	69	61	59	70	70
K - 12 Total	866	891	904	959	978	950	957	1,002	1,045	1,055
Grand Total	880	912	921	977	1,001	971	980	1,037	1,073	1,077

Source: Worthington Schools Student Data, October Count

Historical Enrollment - Worthington Hills Boundary

Grade	2015-16	2016-17	2017-18	2018-19	2019-20	2020-21	2021-22	2022-23	2023-24	2024-25
PS	14	21	17	18	23	21	23	35	28	22
K - 5	381	422	446	475	478	484	497	530	545	519
6 - 8	194	178	185	209	238	206	201	194	226	249
9 - 12	291	291	273	275	262	260	259	278	274	287
K - 12 Total	866	891	904	959	978	950	957	1,002	1,045	1,055
Grand Total	880	912	921	977	1,001	971	980	1,037	1,073	1,077

Source: Worthington Schools Student Data, October Count

Projected Enrollment - Recommended - Worthington Hills Boundary

Grade	2025-26	2026-27	2027-28	2028-29	2029-30	2030-31	2031-32	2032-33	2033-34	2034-35
PS	22	22	22	22	22	22	22	22	22	22
K	77	76	70	72	73	73	73	73	73	73
1	77	79	77	72	74	74	74	74	74	74
2	81	77	79	78	72	75	75	75	75	75
3	93	83	79	81	80	74	76	77	77	77
4	92	93	83	79	81	80	74	77	77	77
5	83	94	95	84	81	83	82	76	78	78
6	99	84	94	95	85	81	83	82	76	78
7	98	99	83	94	95	84	81	83	82	76
8	83	103	105	88	99	100	89	85	88	86
9	72	82	102	104	87	98	100	88	85	87
10	78	74	84	105	107	90	101	102	91	87
11	57	79	75	85	106	107	90	102	103	91
12	86	58	80	76	86	108	110	92	104	105
K - 12 Total	1,076	1,081	1,106	1,113	1,126	1,127	1,108	1,086	1,083	1,064
Grand Total	1,098	1,103	1,128	1,135	1,148	1,149	1,130	1,108	1,105	1,086

Source: Woolpert

Projected Enrollment - Recommended - Worthington Hills Boundary

Grade	2025-26	2026-27	2027-28	2028-29	2029-30	2030-31	2031-32	2032-33	2033-34	2034-35
PS	22	22	22	22	22	22	22	22	22	22
K - 5	503	502	483	466	461	459	454	452	454	454
6 - 8	280	286	282	277	279	265	253	250	246	240
9 - 12	293	293	341	370	386	403	401	384	383	370
K - 12 Total	1,076	1,081	1,106	1,113	1,126	1,127	1,108	1,086	1,083	1,064
Grand Total	1,098	1,103	1,128	1,135	1,148	1,149	1,130	1,108	1,105	1,086

Source: Woolpert

Projected Enrollment - Moderate - Worthington Hills Boundary

Grade	2025-26	2026-27	2027-28	2028-29	2029-30	2030-31	2031-32	2032-33	2033-34	2034-35
PS	22	22	22	22	22	22	22	22	22	22
K	76	75	69	71	72	72	72	72	72	72
1	77	78	76	71	73	73	73	73	73	73
2	80	76	77	76	70	73	73	73	73	73
3	93	82	78	79	78	72	74	75	75	75
4	92	93	82	79	79	78	72	75	75	75
5	83	94	95	83	81	81	80	74	76	76
6	99	84	94	95	84	80	81	80	74	76
7	98	99	83	94	95	83	80	81	80	74
8	83	103	105	88	99	100	88	84	86	84
9	72	83	103	104	88	99	101	88	85	85
10	78	74	85	106	107	90	102	103	91	87
11	57	79	75	86	107	107	90	103	104	91
12	86	58	80	76	87	109	111	92	105	106
K - 12 Total	1,074	1,078	1,102	1,108	1,120	1,117	1,097	1,073	1,069	1,047
Grand Total	1,096	1,100	1,124	1,130	1,142	1,139	1,119	1,095	1,091	1,069

Source: Woolpert

Projected Enrollment - Moderate - Worthington Hills Boundary

Grade	2025-26	2026-27	2027-28	2028-29	2029-30	2030-31	2031-32	2032-33	2033-34	2034-35
PS	22	22	22	22	22	22	22	22	22	22
K - 5	501	498	477	459	453	449	444	442	444	444
6 - 8	280	286	282	277	278	263	249	245	240	234
9 - 12	293	294	343	372	389	405	404	386	385	369
K - 12 Total	1,074	1,078	1,102	1,108	1,120	1,117	1,097	1,073	1,069	1,047
Grand Total	1,096	1,100	1,124	1,130	1,142	1,139	1,119	1,095	1,091	1,069

Source: Woolpert

Projected Enrollment - Low - Worthington Hills Boundary

Grade	2025-26	2026-27	2027-28	2028-29	2029-30	2030-31	2031-32	2032-33	2033-34	2034-35
PS	22	22	22	22	22	22	22	22	22	22
K	75	74	68	70	71	71	71	71	71	71
1	76	76	74	69	71	71	71	71	71	71
2	80	75	75	74	68	71	71	71	71	71
3	93	82	77	77	76	70	72	73	73	73
4	92	93	82	77	77	76	70	73	73	73
5	83	94	95	82	79	78	78	72	74	74
6	99	83	93	94	83	78	78	77	71	73
7	98	98	82	93	94	82	78	78	77	71
8	83	103	104	87	98	99	87	82	83	81
9	72	82	102	104	86	97	99	86	82	82
10	78	74	84	104	106	89	100	100	88	84
11	57	78	74	84	105	105	88	100	101	88
12	86	57	79	75	85	106	108	90	101	102
K - 12 Total	1,072	1,069	1,089	1,090	1,099	1,093	1,071	1,044	1,036	1,014
Grand Total	1,094	1,091	1,111	1,112	1,121	1,115	1,093	1,066	1,058	1,036

Source: Woolpert

Projected Enrollment - Low - Worthington Hills Boundary

Grade	2025-26	2026-27	2027-28	2028-29	2029-30	2030-31	2031-32	2032-33	2033-34	2034-35
PS	22	22	22	22	22	22	22	22	22	22
K - 5	499	494	471	449	442	437	433	431	433	433
6 - 8	280	284	279	274	275	259	243	237	231	225
9 - 12	293	291	339	367	382	397	395	376	372	356
K - 12 Total	1,072	1,069	1,089	1,090	1,099	1,093	1,071	1,044	1,036	1,014
Grand Total	1,094	1,091	1,111	1,112	1,121	1,115	1,093	1,066	1,058	1,036

Source: Woolpert

Projected Enrollment - High - Worthington Hills Boundary

Grade	2025-26	2026-27	2027-28	2028-29	2029-30	2030-31	2031-32	2032-33	2033-34	2034-35
PS	22	22	22	22	22	22	22	22	22	22
K	77	76	70	72	73	73	73	73	73	73
1	78	79	77	72	74	74	74	74	74	74
2	81	77	79	78	72	75	75	75	75	75
3	93	83	79	81	80	74	76	77	77	77
4	93	94	83	80	82	81	75	78	78	78
5	83	95	96	85	82	84	83	77	79	79
6	99	84	95	96	86	82	84	83	77	79
7	98	99	84	95	96	85	83	84	83	77
8	83	104	106	89	101	102	90	87	90	88
9	73	83	103	106	89	100	102	90	88	89
10	79	75	85	107	109	92	104	105	94	90
11	57	80	77	87	109	110	93	106	107	94
12	86	59	81	78	88	111	114	95	108	109
K - 12 Total	1,080	1,088	1,115	1,126	1,141	1,143	1,126	1,104	1,103	1,082
Grand Total	1,102	1,110	1,137	1,148	1,163	1,165	1,148	1,126	1,125	1,104

Source: Woolpert

Projected Enrollment - High - Worthington Hills Boundary

Grade	2025-26	2026-27	2027-28	2028-29	2029-30	2030-31	2031-32	2032-33	2033-34	2034-35
PS	22	22	22	22	22	22	22	22	22	22
K - 5	505	504	484	468	463	461	456	454	456	456
6 - 8	280	287	285	280	283	269	257	254	250	244
9 - 12	295	297	346	378	395	413	413	396	397	382
K - 12 Total	1,080	1,088	1,115	1,126	1,141	1,143	1,126	1,104	1,103	1,082
Grand Total	1,102	1,110	1,137	1,148	1,163	1,165	1,148	1,126	1,125	1,104

Source: Woolpert

WORTHINGTON PARK BOUNDARY

Historical Enrollment - Worthington Park Boundary

Grade	2015-16	2016-17	2017-18	2018-19	2019-20	2020-21	2021-22	2022-23	2023-24	2024-25
PS	19	26	27	24	29	18	17	21	20	19
K	49	66	51	62	64	65	55	67	39	51
1	75	50	69	57	70	67	61	53	71	43
2	65	68	45	69	54	70	61	57	54	59
3	73	63	66	48	68	55	62	65	58	45
4	59	64	59	61	49	65	54	54	58	57
5	58	66	65	65	60	47	62	46	50	57
6	62	57	61	66	63	60	42	61	42	49
7	60	63	60	61	67	66	65	42	65	39
8	70	66	69	64	67	72	65	63	42	60
9	65	68	66	70	67	70	71	70	65	43
10	66	65	73	60	71	65	72	69	72	69
11	70	66	62	76	57	73	65	66	70	73
12	73	68	68	63	71	63	77	77	69	75
K - 12 Total	845	830	814	822	828	838	812	790	755	720
Grand Total	864	856	841	846	857	856	829	811	775	739

Source: Worthington Schools Student Data, October Count

Historical Enrollment - Worthington Park Boundary

Grade	2015-16	2016-17	2017-18	2018-19	2019-20	2020-21	2021-22	2022-23	2023-24	2024-25
PS	19	26	27	24	29	18	17	21	20	19
K - 5	379	377	355	362	365	369	355	342	330	312
6 - 8	192	186	190	191	197	198	172	166	149	148
9 - 12	274	267	269	269	266	271	285	282	276	260
K - 12 Total	845	830	814	822	828	838	812	790	755	720
Grand Total	864	856	841	846	857	856	829	811	775	739

Source: Worthington Schools Student Data, October Count

Projected Enrollment - Recommended - Worthington Park Boundary

Grade	2025-26	2026-27	2027-28	2028-29	2029-30	2030-31	2031-32	2032-33	2033-34	2034-35
PS	19	19	19	19	19	19	19	19	19	19
K	48	52	52	51	52	52	52	52	52	52
1	54	51	56	55	54	55	55	55	55	55
2	40	50	47	51	51	50	51	51	51	51
3	58	39	49	46	50	50	49	50	50	50
4	44	57	38	48	45	49	49	48	49	49
5	54	42	54	36	46	43	47	46	45	46
6	55	53	41	52	35	44	42	45	45	44
7	49	56	53	41	52	35	45	42	46	45
8	38	49	55	52	40	52	35	44	41	45
9	62	39	50	56	54	41	53	36	45	43
10	44	63	40	51	57	55	42	54	37	46
11	70	45	64	41	52	58	55	43	55	37
12	78	75	48	68	44	55	62	59	46	59
K - 12 Total	694	671	647	648	632	639	637	625	617	622
Grand Total	713	690	666	667	651	658	656	644	636	641

Source: Woolpert

Projected Enrollment - Recommended - Worthington Park Boundary

Grade	2025-26	2026-27	2027-28	2028-29	2029-30	2030-31	2031-32	2032-33	2033-34	2034-35
PS	19	19	19	19	19	19	19	19	19	19
K - 5	298	291	296	287	298	299	303	302	302	303
6 - 8	142	158	149	145	127	131	122	131	132	134
9 - 12	254	222	202	216	207	209	212	192	183	185
K - 12 Total	694	671	647	648	632	639	637	625	617	622
Grand Total	713	690	666	667	651	658	656	644	636	641

Source: Woolpert

Projected Enrollment - Moderate - Worthington Park Boundary

Grade	2025-26	2026-27	2027-28	2028-29	2029-30	2030-31	2031-32	2032-33	2033-34	2034-35
PS	19	19	19	19	19	19	19	19	19	19
K	47	51	51	50	51	51	51	51	51	51
1	54	50	55	54	53	54	54	54	54	54
2	40	50	46	50	50	49	50	50	50	50
3	58	39	49	45	49	49	48	49	49	49
4	44	57	38	48	44	48	48	47	48	48
5	54	42	54	36	46	42	46	45	44	45
6	55	53	41	52	35	44	41	44	44	43
7	49	56	53	41	52	35	45	41	45	44
8	38	49	55	52	40	52	35	44	40	44
9	62	39	50	56	54	41	53	36	45	42
10	44	63	40	51	57	55	42	54	37	46
11	70	45	64	41	52	58	55	43	55	37
12	78	75	48	68	44	55	62	59	46	59
K - 12 Total	693	669	644	644	627	633	630	617	608	612
Grand Total	712	688	663	663	646	652	649	636	627	631

Source: Woolpert

Projected Enrollment - Moderate - Worthington Park Boundary

Grade	2025-26	2026-27	2027-28	2028-29	2029-30	2030-31	2031-32	2032-33	2033-34	2034-35
PS	19	19	19	19	19	19	19	19	19	19
K - 5	297	289	293	283	293	293	297	296	296	297
6 - 8	142	158	149	145	127	131	121	129	129	131
9 - 12	254	222	202	216	207	209	212	192	183	184
K - 12 Total	693	669	644	644	627	633	630	617	608	612
Grand Total	712	688	663	663	646	652	649	636	627	631

Source: Woolpert

Projected Enrollment - Low - Worthington Park Boundary

Grade	2025-26	2026-27	2027-28	2028-29	2029-30	2030-31	2031-32	2032-33	2033-34	2034-35
PS	19	19	19	19	19	19	19	19	19	19
K	47	51	51	50	51	51	51	51	51	51
1	54	49	54	53	52	53	53	53	53	53
2	39	49	45	48	48	47	48	48	48	48
3	58	38	48	44	47	47	46	47	47	47
4	44	57	37	47	43	46	46	45	46	46
5	54	42	54	35	45	41	44	44	43	43
6	55	53	41	51	34	43	39	42	42	41
7	49	56	52	41	51	34	43	39	43	42
8	38	49	55	52	40	51	34	42	38	42
9	62	39	50	56	54	41	53	35	44	40
10	44	63	40	51	56	54	41	53	36	44
11	70	44	63	41	51	57	54	42	54	36
12	78	74	47	67	43	54	61	58	45	57
K - 12 Total	692	664	637	636	615	619	613	599	590	590
Grand Total	711	683	656	655	634	638	632	618	609	609

Source: Woolpert

Projected Enrollment - Low - Worthington Park Boundary

Grade	2025-26	2026-27	2027-28	2028-29	2029-30	2030-31	2031-32	2032-33	2033-34	2034-35
PS	19	19	19	19	19	19	19	19	19	19
K - 5	296	286	289	277	286	285	288	288	288	288
6 - 8	142	158	148	144	125	128	116	123	123	125
9 - 12	254	220	200	215	204	206	209	188	179	177
K - 12 Total	692	664	637	636	615	619	613	599	590	590
Grand Total	711	683	656	655	634	638	632	618	609	609

Source: Woolpert

Projected Enrollment - High - Worthington Park Boundary

Grade	2025-26	2026-27	2027-28	2028-29	2029-30	2030-31	2031-32	2032-33	2033-34	2034-35
PS	19	19	19	19	19	19	19	19	19	19
K	48	52	52	51	52	52	52	52	52	52
1	54	51	56	55	54	55	55	55	55	55
2	40	50	47	51	51	50	51	51	51	51
3	58	39	49	46	50	50	49	50	50	50
4	44	57	38	49	45	49	49	48	49	49
5	54	42	55	36	47	43	48	47	45	46
6	55	53	41	53	35	45	42	46	46	45
7	49	56	53	42	53	35	46	43	47	46
8	38	49	55	52	41	53	36	45	42	46
9	62	39	51	57	55	42	54	37	46	44
10	44	64	41	52	58	56	43	56	38	48
11	70	46	65	42	53	60	57	45	57	38
12	78	76	49	70	45	57	64	61	48	62
K - 12 Total	694	674	652	656	639	647	646	636	626	632
Grand Total	713	693	671	675	658	666	665	655	645	651

Source: Woolpert

Projected Enrollment - High - Worthington Park Boundary

Grade	2025-26	2026-27	2027-28	2028-29	2029-30	2030-31	2031-32	2032-33	2033-34	2034-35
PS	19	19	19	19	19	19	19	19	19	19
K - 5	298	291	297	288	299	299	304	303	302	303
6 - 8	142	158	149	147	129	133	124	134	135	137
9 - 12	254	225	206	221	211	215	218	199	189	192
K - 12 Total	694	674	652	656	639	647	646	636	626	632
Grand Total	713	693	671	675	658	666	665	655	645	651

Source: Woolpert

CONCLUSION

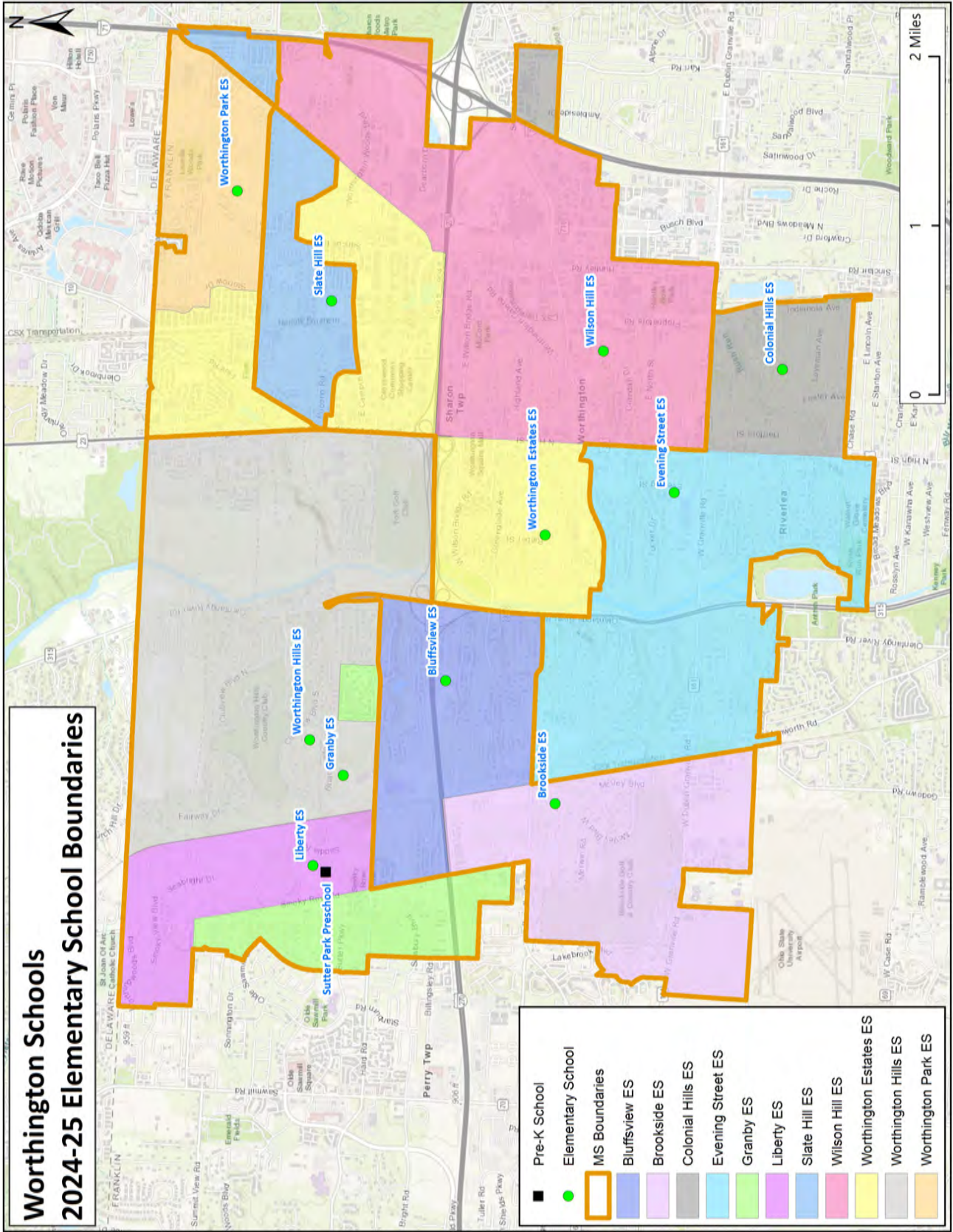
As with any projection, the District should pay close attention to live birth counts, enrollment in elementary schools, open enrollment, non-public enrollment, in / out migration patterns, and any housing growth. It is recommended that this document be reviewed on an annual basis to determine how more recent growth and enrollment trends will impact the enrollment projections.

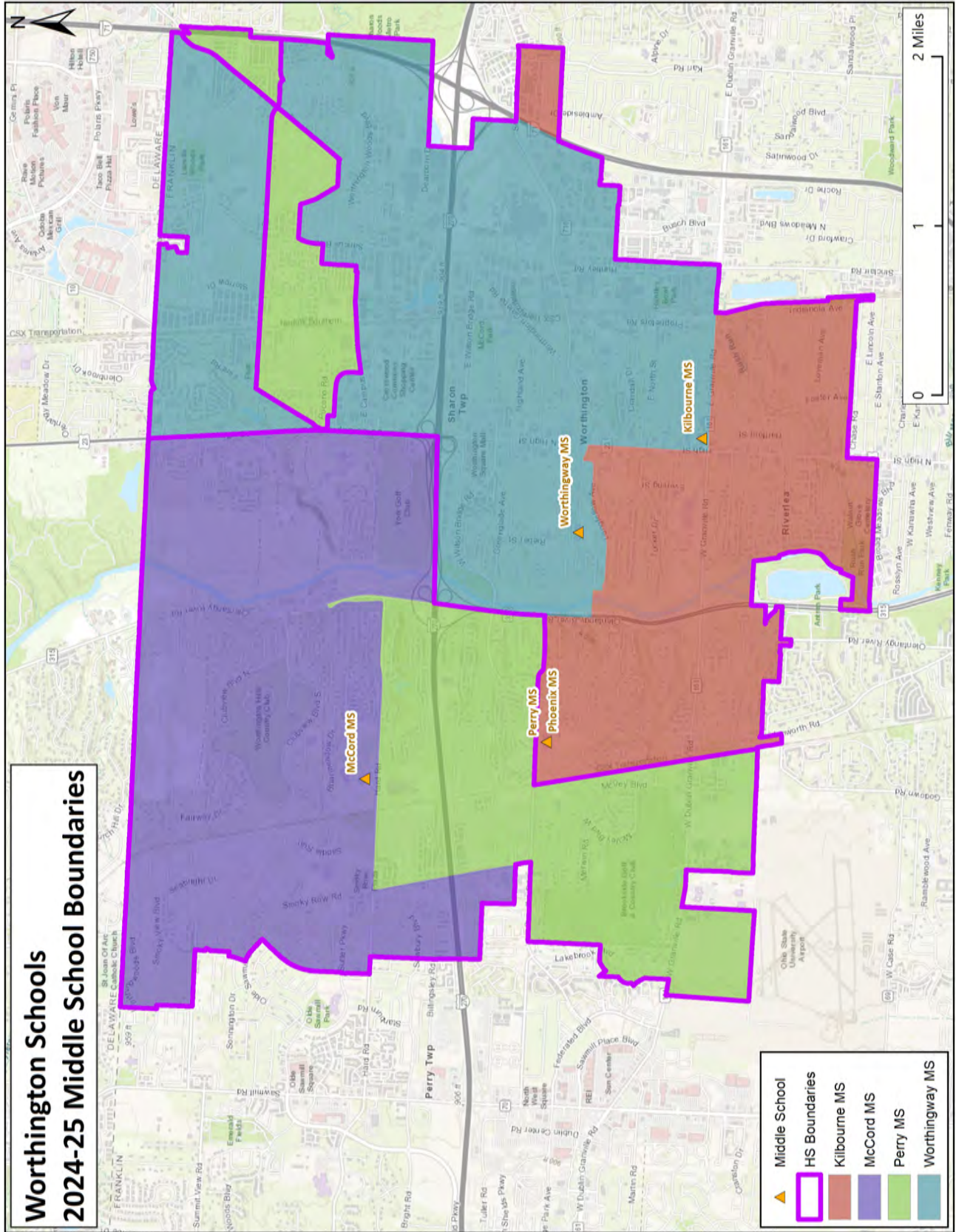
Woolpert is pleased to have had the opportunity to provide the District with this demographic study. We hope this document will provide the necessary information to make informed decisions about the future of the Worthington Schools.

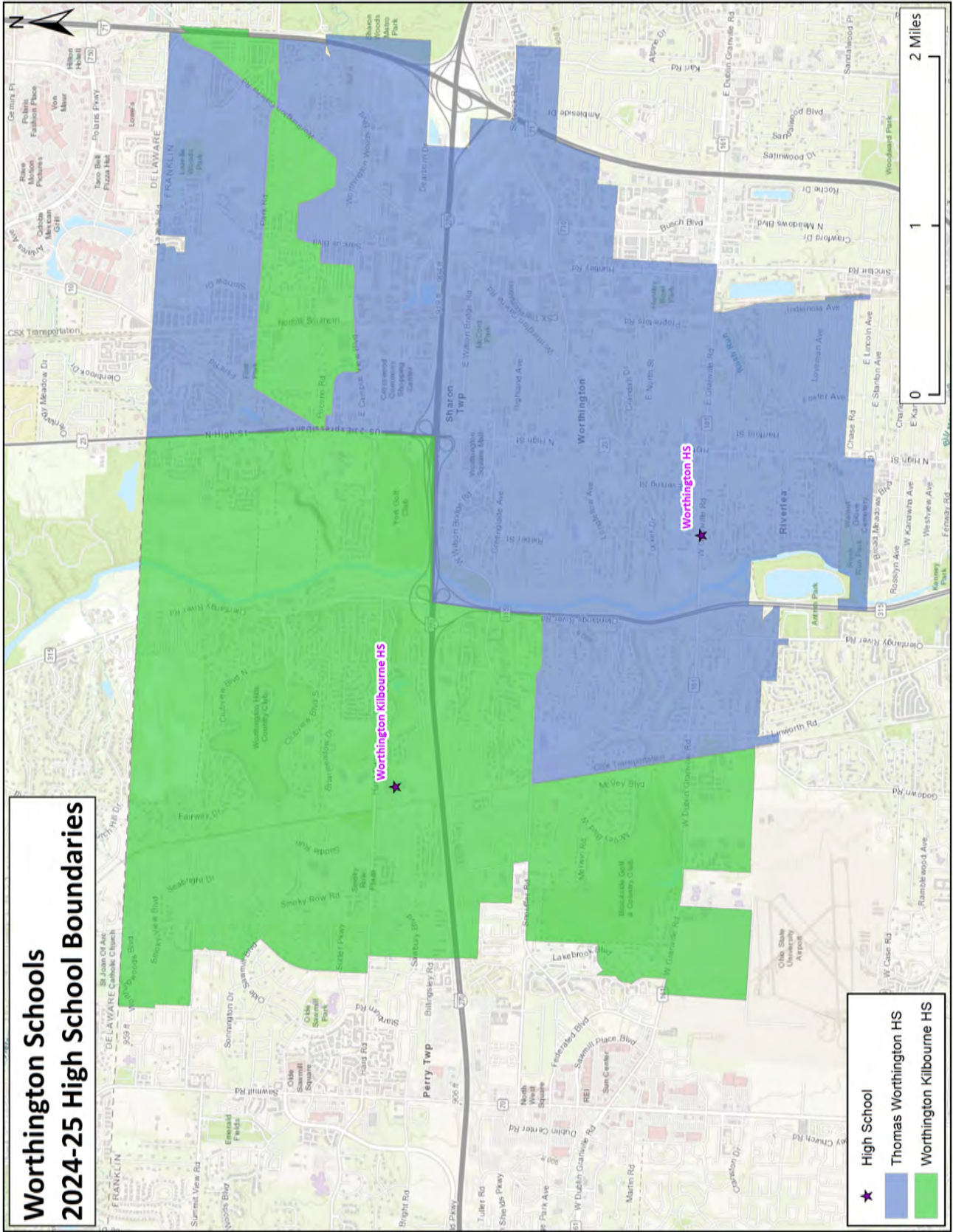
APPENDIX A

SCHOOL BOUNDARY MAPS

The following maps illustrate the 2024-25 school boundaries in the Worthington Schools.



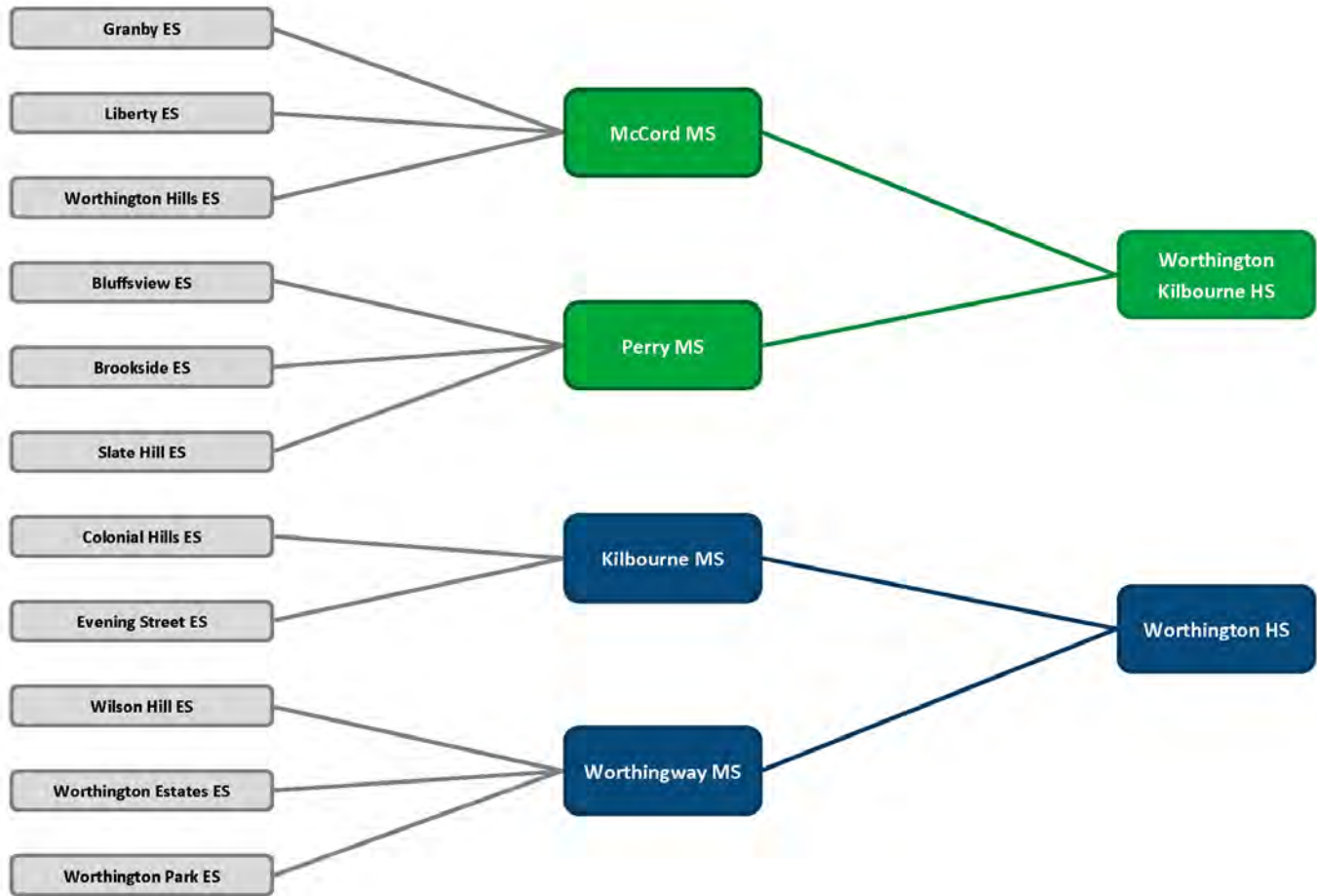




**Worthington Schools
2024-25 High School Boundaries**

- ★ High School
- Thomas Worthington HS
- Worthington Kilbourne HS

APPENDIX B FEEDER FLOWCHART



APPENDIX C LIVE/ATTEND ANALYSIS

The tables below and on the following page illustrate a live/attend analysis for the Worthington Schools. This table cross-references 2024-25 student enrollment and the current attendance zone in which students reside. The numbers in bold denote students who live in the boundary of and attend their zoned school. Transfer-in denotes the number of students who transfer into a school from outside of the attendance zone. Transfer-out denotes the number of students that leave their zoned school to attend another school.

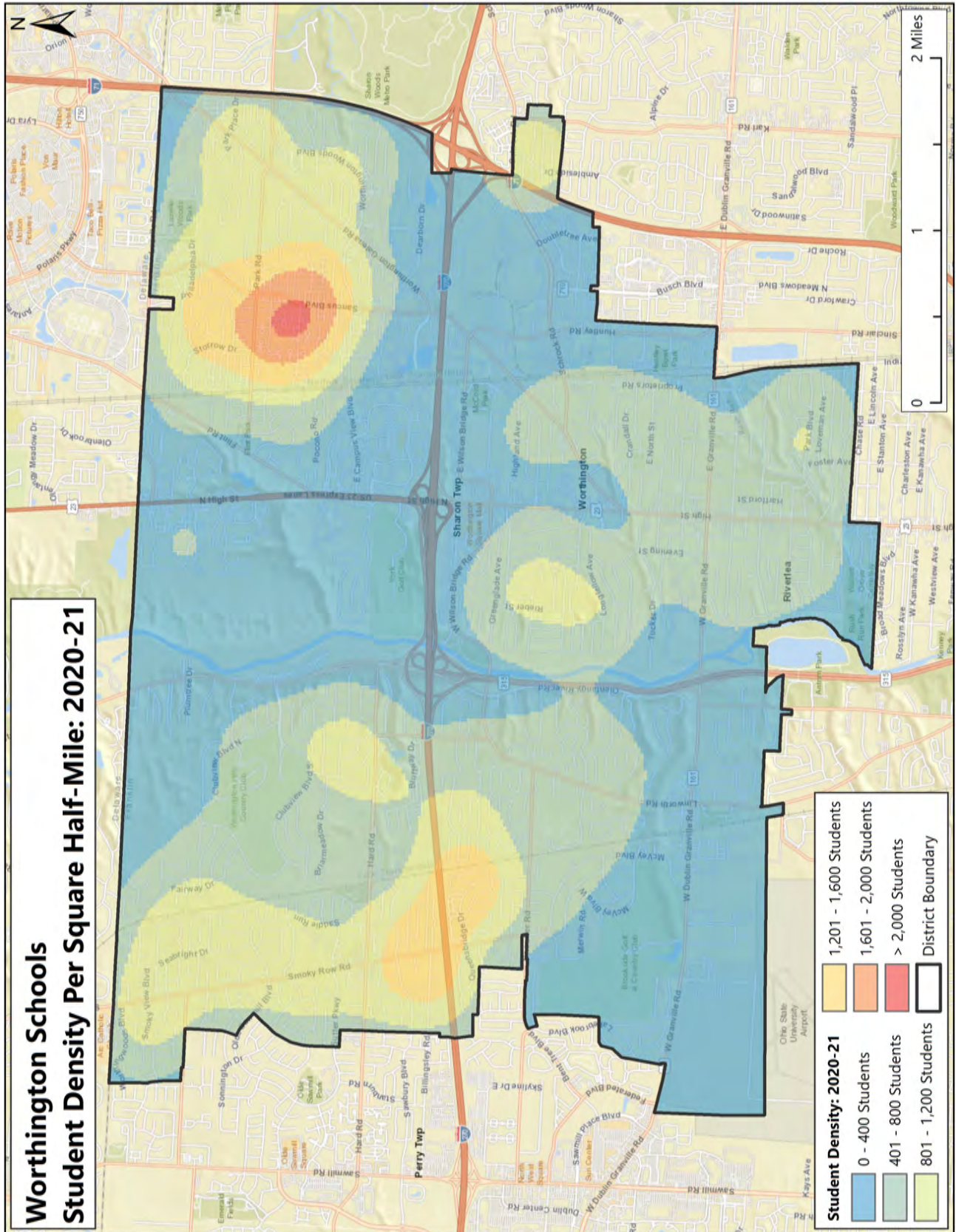
Worthington Schools 2024-25 Live/Attend Analysis PS Students		School of Attendance Sutter Park Elementary
Boundary of Residence	Bluffsview ES Boundary	31
	Brookside ES Boundary	20
	Colonial Hills ES Boundary	20
	Evening Street ES Boundary	17
	Granby ES Boundary	37
	Liberty ES Boundary	52
	Slate Hill ES Boundary	37
	Wilson Hill ES Boundary	26
	Worthington Estates ES Boundary	47
	Worthington Hills ES Boundary	22
	Worthington Park ES Boundary	19
	Out of District	2
	Grand Total	330

Data Source: Worthington Schools Student Data

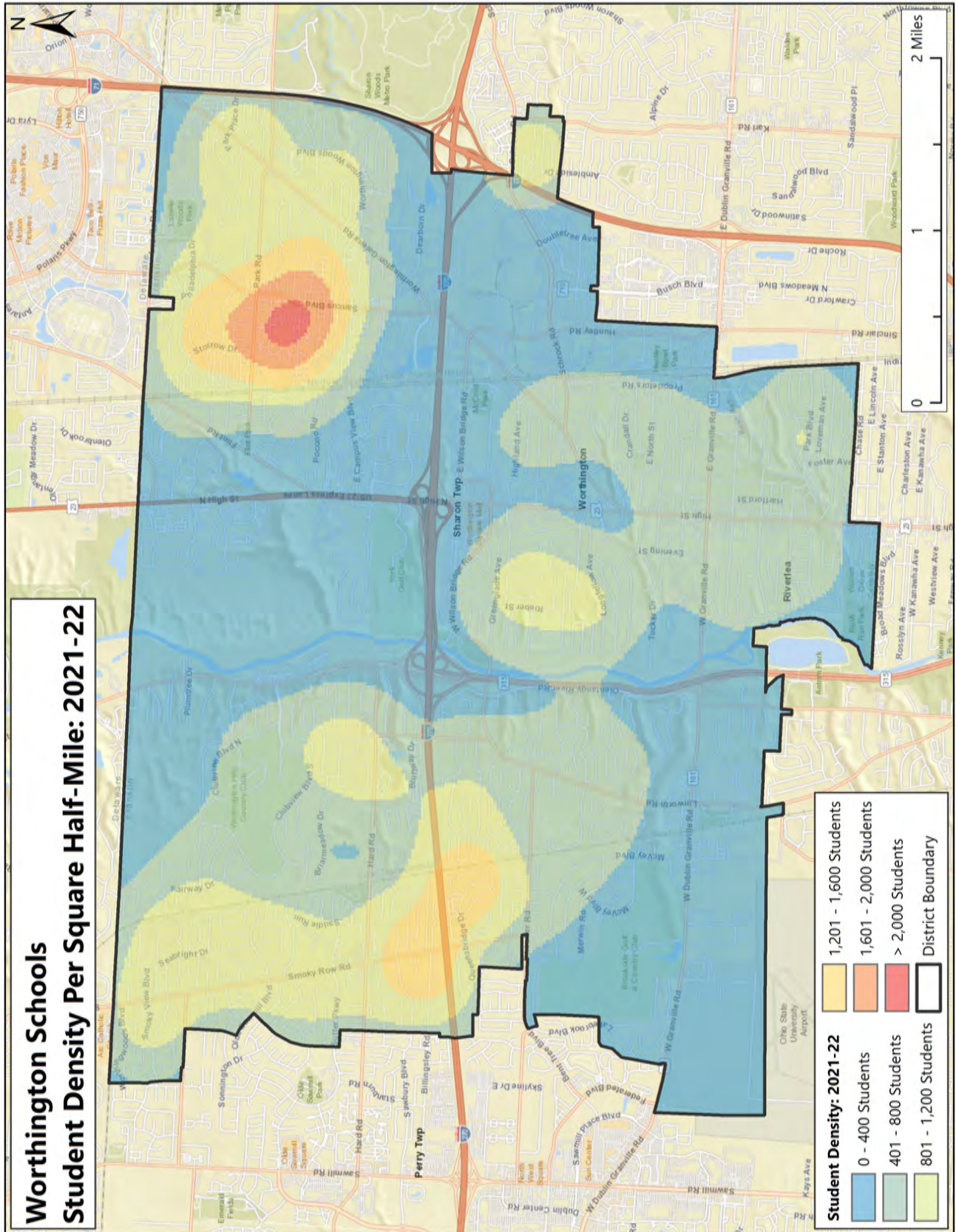
APPENDIX D STUDENT DENSITY

The maps on the following pages show student density in the Worthington Schools. The darker blue areas indicate lower student density while the darker red areas indicate higher student density.

Worthington Schools Student Density Per Square Half-Mile: 2020-21



Worthington Schools Student Density Per Square Half-Mile: 2021-22



Worthington Schools Student Density Per Square Half-Mile: 2022-23

