



LONG RANGE PLANNING STUDY

NORTH SALEM

**CENTRAL SCHOOL DISTRICT
2024-25
UPDATE**

*A Service of Western Suffolk BOCES
Division of Instructional Support Services
Office of School Planning & Research*



North Salem Central School District

Long Range Planning Study Update Demographic and Enrollment Analysis 2024-25

BOARD OF EDUCATION

President Kurt Guldan
Vice President.....Brandy Keenan
TrusteesCarolyn Aversano
.....Deborah D'Agostino
.....Elizabeth Bridges
.....Frances Havard
.....Elizabeth Malvino

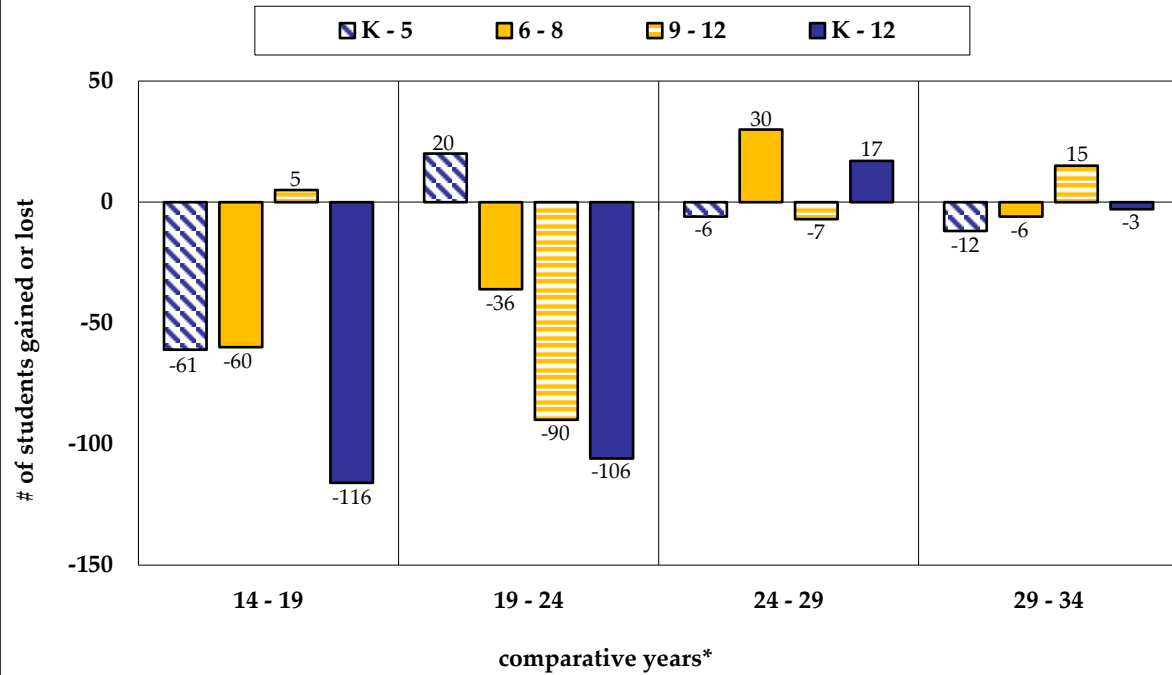
DISTRICT ADMINISTRATION

Superintendent of Schools Dr. Adam VanDerStuyf
Assistant Superintendent of Business and Operations.....Lindsay Eidel
Director of Instruction & Human ResourcesDr. Julio Vazquez
Director of Physical Education & Athletics.....Denise Kiernan
Director of Facilities.....Michael Grundig
Director of Pupil Personnel ServicesKelly Rudyk

BUILDING ADMINISTRATION

North Salem Middle/High SchoolVincent DiGrandi, Principal
.....Dr. Kathleen Murphy, Assistant Principal
Pequenakonck Elementary School Dr. Roy Martin, Principal
..... Dawn Snowdon, Assistant Principal

North Salem Central School District Enrollment Change 2014 - 2034



* Historical period includes 2014 - 2019 and 2019 - 2024 comparative periods, projection period includes 2024 - 2029 and 2029 - 2034 comparative periods

The North Salem Central School District has shown an overall loss of 222 students, or 19.1 percent, from 2014 to 2024, with decreases recorded in all grade configurations. During the first half of the projection period, slight losses are expected in the elementary (K - 5) and high school (9 - 12) grade configurations, while the middle (6 - 8) grades are forecasted to gain students. During the latter half of the projection period, the elementary and middle grades are forecasted to lose students, while the high school grades are anticipated to gain students. The projected 2034 enrollment of 954 students represents a gain of 14 students, or 1.5 percent, when compared to the current enrollment.

INTRODUCTION

At the request of the North Salem Central School District, the *Western Suffolk BOCES Office of School Planning and Research* conducted this study to assess recent demographic factors and enrollment trends to prepare projections through the year 2034.

The North Salem Central School District is committed to meeting the educational needs of its students. The continued monitoring of enrollment trends will provide the district with data on a variety of educational issues. The foundation for this study is in keeping with the promotion of the basic district mission and philosophy.

The Board of Education and the Superintendent's efforts to plan through sound management practices are fostered by comprehensive and objective data, such as that contained within this *Long Range Planning Study Update*. This study provides objective data that the Board of Education and administration can use in planning for the future. Planning is, however, a dynamic process that needs to reflect change. Periodic updates allow the incorporation of subtle changes in district trends. This current study provides an update to the demographic and enrollment study prepared for the district during the 2023-24 school year.

Christina Vagenas, Ph.D., Coordinator of Instructional Support and Planning, oversaw all aspects of the study and served as principal researcher. Shu-ling Liu, Senior Research Analyst, served as analyst and forecaster. Maile Beatty, Consultant, prepared the report. Denise Facilla, Educational Planning Assistant, provided research assistance and prepared the report for printing.

Dr. Adam VanDerStuyf, Superintendent of Schools, provided access to district records. Lindsay Eidel, Assistant Superintendent of Business & Operations, and Kimber-Lee Maston, Secretary to School Administrator, compiled the necessary data for the study and acted as district liaison, thus enabling the school planning and research team to accomplish requested objectives.

Additionally, selected references and resources were used, as indicated below:

Center for Immigration Studies

The State of The Nation's Housing 2024,

Joint Center for Housing Studies of Harvard University

Kearney, M.S., Levine, L.P. (2022). The Puzzle of Falling Births Since the Great Recession.

Journal of Economic Perspectives, Vol. 36 (1), 151-176

Migration Policy Institute

National Alliance for Public Charter Schools

National Association of Realtors

National Catholic Educational Association

National Center for Education Statistics

National Center for Health Statistics, National Vital Statistics System

New York Charter Schools Association

New York State Association of Realtors

New York State Department of Health

New York State Education Department

New York State Office of Real Property Services

Pew Research Center

Population Reference Bureau

The Wall Street Journal

Town of North Salem Planning Department

Town of Somers Planning Department

Town of Southeast Planning Department

United States Census Bureau

United States Customs and Border Patrol

United States Department of Education

TABLE OF CONTENTS

ENROLLMENT: PAST, PRESENT & FUTURE

A. Births	1
B. Population	4
C. Historical Enrollment Data.....	10
D. Housing.....	14
E. Non-Public/Charter School Enrollment.....	18
F. Enrollment Projection Methodology.....	21
G. Accuracy of Previous Projections	23
H. District Enrollment	24
I. Enrollment of Grade Configurations	26

APPENDICES

Appendix A - Historical and Projected Enrollment Worksheets

Appendix B - Enrollment Graphs

TABLES

Table 1 - Births in the North Salem CSD, 2009 - 2022	3
Table 2 - Number of Home Sales and Median Prices in Westchester County	14
Table 3 - Home Sales in the North Salem CSD, 2013 - 2023.....	15
Table 4 - Approved and Proposed Housing in the North Salem CSD	17
Table 5 - NYS Non-Public & Charter School Enrollment	20
Table 6 - Accuracy of the Western Suffolk BOCES 2023-24 Projections for 2024-25.....	23
Table 7 - Projected North Salem CSD Enrollment.....	24
Table 8 - Projected North Salem CSD Elementary Enrollment & Instructional Sections.....	27
Table 9 - Projected North Salem CSD Middle & High School Enrollment	29

FIGURES

Figure 1 - New York State Births, 2003 - 2023.....	2
Figure 2 - Westchester County Births, 2002 - 2022	2
Figure 3 - Projected Age Structure of the U.S. Population.....	5
Figure 4 - U.S. Children in Immigrant Families	7
Figure 5 - Projected Racial Structure of the U.S. Population	8
Figure 6 - English Language Learners by Year in the North Salem CSD, 2013 - 2023	10
Figure 7 - English Language Learners by Grade Level in the North Salem CSD, 2022-23 School Year	11
Figure 8 - Students with Disabilities by Year in the North Salem CSD, 2013 - 2023	12
Figure 9 - Economically Disadvantaged Students by Year in the North Salem CSD, 2013 - 2023.....	13
Figure 10 - Charter School Enrollment	19

ENROLLMENT: PAST, PRESENT & FUTURE

Changes in school enrollment occur due to fluctuations in the number of children being born, the number of families moving into a community and/or the number of children attending non-public or charter schools. The North Salem Central School District enrollment is expected to increase slightly during the projection period 2025 - 2034. This slight increase is accounted for by larger kindergarten cohorts and housing factors in the district.

A. BIRTHS

Provisional data released by the *National Center for Health Statistics* shows there were 3,596,017 births recorded in 2023; this represents a two percent decline from 2022 (3,667,758) and 2021 (3,664,292). According to the *CDC (Center for Disease Control and Prevention)*, the total number of births and birth rates have experienced a general decline since the most recent high in 2007 when there was a peak of 4,316,233 births. There were 720,216 fewer annual births in 2023 relative to 2007 - a 17% reduction. The general fertility rate in 2023 of 54.5 births per 1,000 women aged 15 to 44 years represents a 21% decline compared to 2007.

Since the *Great Recession (2007 - 2009)*, lower births have been attributed to several factors, including significant student loan debt and higher housing costs, which led to many young individuals living with their parents longer than they may have otherwise. This has contributed to young adults delaying marriage and childbearing. The percentage of unmarried women has been growing steadily since 1980, and the median age at first marriage for women has grown from 22.0 years in 1980 to 28.4 years in 2023. According to the most recent data from the *CDC*, the average woman gave birth for the first time at 27.4 years old in 2022, which is an increase compared to 2011 (25.6 years old). However, according to a recent study (*The Puzzle of Falling US Birth Rates since the Great Recession*), the declines may also reflect “broad societal changes that are hard to measure or quantify: possibilities include changing preferences for children, broader career options (and other aspirations) for women and shifts in the nature of parenting.”

Another factor that has impacted birth rates has been a shift in fertility patterns by race/ethnicity. Between 2022 and 2023, fertility rates declined five percent for AIAN (American Indian or Alaska Native) and Black women, three percent for White and Asian women, but by only one percent for Hispanic women. For NHOPI (Native Hawaiian or other Pacific Islander) women fertility rates remained stable. In 2023, birth rates were highest among NHOPI women (73.4 births per 1,000 women), followed by Hispanic women (65.0), Black women (53.5), White women (51.6), AIAN women (47.9), and Asian women (47.7)

Birth rates were highest for women aged 30 - 34 (95.1 births per 1,000 women) in 2023, followed by women aged 25 - 29 (91.0), women aged 20 - 24 (55.4), and women aged 35 - 39 (54.7). However, the birth rate for teenagers (15 - 19) dropped to a record low of 13.2 (per 1,000 women) in 2023, reflecting a decline of 79 percent when compared to the peak birth rate of 61.8 for this group recorded in 1991.

Consistent with national birth trends, an overall birth decline (19.7 percent) has been recorded in New York State from 2003 - 2023. *Figure 1* shows a visual representation of this historical 20-year period. Provisional data for 2023 indicates a decrease (-1.8 percent) in births when compared to the prior year, with 203,126 births recorded in 2023.

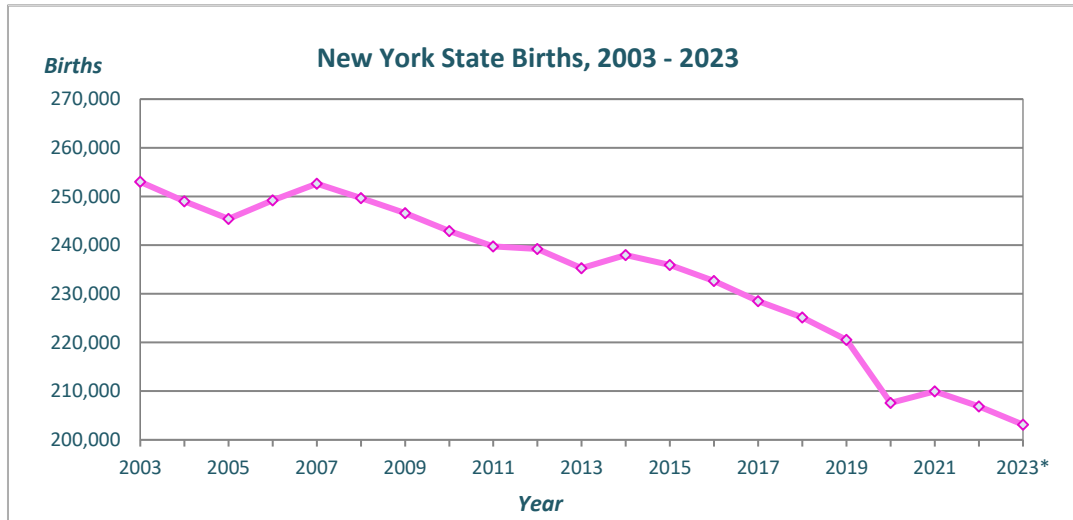


Figure 1 - New York State Births, 2003 - 2023
 Source: 2003 - 2022 NYS Dept. of Health
 *2023 data source is provisional from CDC

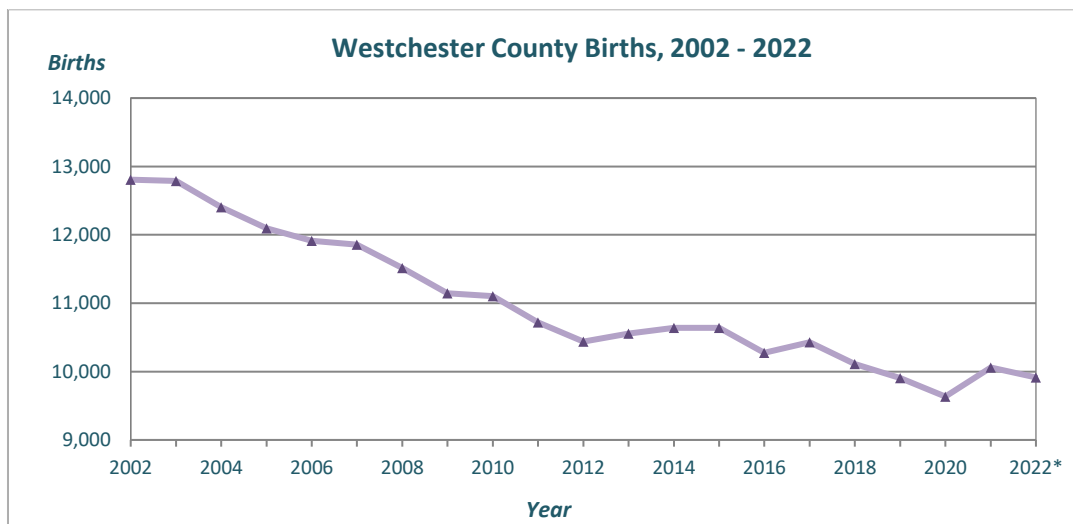


Figure 2 - Westchester County Births, 2002 - 2022
 Source: NYS Dept. of Health
 *Note: 2022 data are provisional and 2023 county birth data are not yet available

Figure 2 shows that Westchester County recorded 12,807 births in 2002. Although there was a 4.4 percent post-COVID increase in births from 2020 to 2021, births declined by 1.5 percent the next year with 9,913 births recorded in 2022. This represents an overall decline of 22.6 percent over the 20-year historical period (2002 - 2022) (*County birth data for 2023 has not yet been released*).

As shown in Table 1, from 2009 through 2022, the number of births in the North Salem Central School District fluctuated within 41 - 65, with the peak of 65 births recorded in 2013. Sixty-one births were recorded in 2022 (*district birth data for 2022 is provisional and 2023 data is not yet available*).

Table 1 - Births in the North Salem CSD, 2009 - 2022

Year	North Salem CSD	Towns of Carmel, North Salem, Somers & Southeast
2009	63	636
2010	45	636
2011	42	624
2012	43	582
2013	65	604
2014	47	601
2015	47	639
2016	58	637
2017	41	576
2018	51	670
2019	58	618
2020	53	628
2021	58	694
2022*	61	707

Source: NYS Dept. of Health

**Note: 2022 data are provisional*

Note: 2023 birth data is not yet available

B. POPULATION

According to *2020 Census* data, there were 331.5 million people living in the United States as of April 2020; this is an increase of 22.7 million people, or 7.4 percent, since the *2010 Census*. This represents the slowest growth for a decennial census since the Great Depression in the 1930s. According to the *Census Bureau*, “Slower population growth has been a trend in the United States for several years, the result of decreasing fertility and net international migration, combined with increasing mortality due to an aging population.” While national population growth is still historically low, the recently released *Census* estimate of a 0.5% increase in 2023 represents a slight uptick from the 0.4% increase in 2022 and the 0.2% increase in 2021. This most recent increase in 2023 marks the nation’s largest population gain since 2018. According to the *Census Bureau*, “U.S. migration returning to pre-pandemic levels and a drop in deaths are driving the nation’s growth.”

New York State’s population totaled approximately 20.2 million people as of the *2020 Census*, reflecting a gain of approximately 823,000 people (4.2 percent), when compared to the *2010 Census*. New York is the fourth most populous state in the country, following California (39.5 million people), Texas (29.1 million people) and Florida (21.5 million people). However, recent *Census* estimates (2023) indicate that New York State’s population now totals approximately 19.6 million people, reflecting a loss of more than 630,000 residents (-3.1 percent) since the *2020 Census*. This is the result of a net domestic migration loss of over 600,000 residents, meaning more residents moved to other states than moved in. In 2023, domestic migration loss has once again been offset by natural increase and international migration into the state as COVID-19 travel restrictions to the United States were relaxed towards the end of 2021. Consistent with national trends, the estimated international migration in New York State returned to pre-pandemic levels in 2022 and 2023.

Westchester County’s population totaled more than 1,004,000 people as of the *2020 Census*, reflecting a gain of more than 55,000 people, or 5.8 percent, since the *2010 Census*. However, recent 2023 estimates by the *Census Bureau* indicate a loss of more than 13,000 residents (-1.4 percent) since the *2020 Census* and a loss of approximately 900 residents since the 2022 estimates. Consistent with State trends, the loss in 2023 was the result of a domestic migration loss of over 7,500 people offset by natural increases and international migration gains.

Between 2010 and 2020, the Town of Somers recorded a population gain of 5.4 percent, while the Town of Southeast recorded a loss of 1.9 percent. The number of residents in the North Salem Central School District remained stable during the same period, with 7,429 residents living within the district in 2020.

According to *Census Bureau* projections, the year 2030 will mark a “demographic turning point for the United States.” In that year, all baby boomers will be 65 years of age or over and one in five Americans will be of retirement age. It is also projected that by the year 2034, older adults will outnumber children aged under 18 years for the first time in history.

As shown in *Figure 3*, the segment of the population 65 years and over in the United States represented 12.4 percent of the total population in 2000; this age segment grew to 16.0 percent in 2020 and is expected to increase to 24.4 percent of the total population in 2060. The 45 - 64-year-old age segment is also projected to grow, from 22.0 percent in 2000 to 26.0 percent in 2060. However, the percentages of residents under 18 years of age and aged 18 - 44 years are projected to decrease from 2000 to 2060 from 25.7 to 17.7 percent and 39.9 to 32.0 percent, respectively.

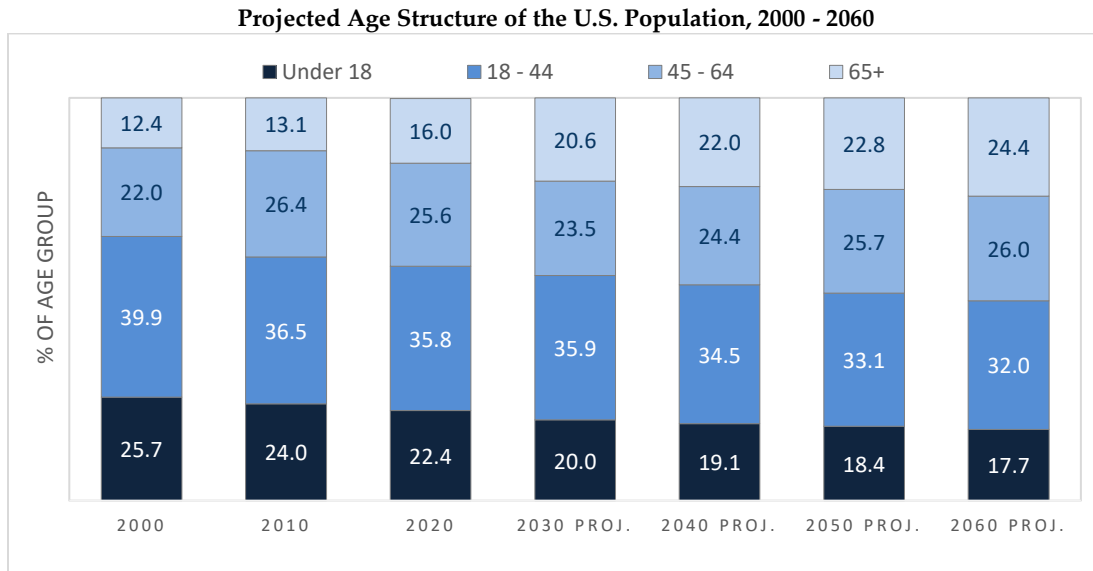


Figure 3 - Projected Age Structure of the U.S. Population
Source: U. S. Census Bureau

The *Census Bureau* indicates that in New York State, from 2010 to 2020, the segment of residents aged 19 years and under decreased from 25.3 to 23.1 percent of the population; however, during the same period, the segment of residents aged 65 years and older grew from 13.5 to 16.9 percent.

In Westchester County, population trends reflect those of New York State and the nation. The County recorded a decline in the number of residents aged 19 years and under between 2010 and 2020. In 2010, 26.5 percent of the population was of this age; by 2020, this group had shrunk to 24.7 percent. However, there has been a significant increase in the share of the senior (65+) population, growing from 14.7 to 17.4 percent during this period. This trend is reflected in the median age of residents, which has increased from 40.0 years in 2010 to 41.1 years in 2020. This is higher than New York State’s median age (39.0 years) and the nation’s median age (38.8 years).

The age structure of the resident population in the North Salem Central School District has also shifted between 2010 and 2020. The segment of residents aged 19 years or younger decreased from 27.0 to 22.8 percent, while the percentage of residents aged 65+ increased from 15.6 to 22.2 percent. The median age of residents in the district increased from 45.2 years in 2010 to 46.9 years in 2020.

Immigration remains a large contributor to population growth in the United States. However, international migration was low in 2020 and 2021 due to the COVID pandemic. Travel restrictions were put in place and three-fourths of US consulates abroad, which process visas, were closed through June of 2021. Now that the restrictions have been lifted, preliminary 2023 *Census* estimates indicate that international migration to the United States has returned to pre-pandemic levels and is a driving force behind the nation’s largest population gain since 2018. According to the Migration Policy Institute, “recent increases in encounters of asylum seekers and other migrants at U.S. borders reflect a number of factors, including worsening political and economic conditions in origin countries; the uneven repercussions of the pandemic; the war in Ukraine; and the perception that U.S. policy has become more welcoming.” Additionally, encounters of migrants occurring at the US-Mexico border recorded by *US Customs and Border Patrol* in fiscal year 2023 (October 01, 2022 - September 30, 2023), reached a new historic high of 2.5 million. While it is impossible to predict where migrants go in the US after they cross the border, data on notices to appear (NTA) in immigration court, which are given to migrants at the border, can be a helpful, if imperfect, indicator. Twice as many NTAs were filed in interior states, such as New York and Illinois, in fiscal year 2023 compared to fiscal year 2022. While the number of NTAs in general has gone up, the rate of increase in these states was much higher than for the nation as a whole.

According to the 2023 *American Community Survey (one-year estimate)*, the 47.83 million foreign-born residents in the United States account for 14.3 percent of the total population and represent an increase of 1.65 million residents compared to the 2022 *American Community Survey*. The current size of the foreign-born population and the year-to-year increase are the largest the survey has ever shown. It is estimated that immigrants from Latin American account for 51 percent of the current foreign-born population and 76 percent of the increase in the foreign-born population in the past year. New York State is one of four states in the country where immigrants comprise over one-fifth of the population (23.1 percent), along with California (27.3 percent), New Jersey (24.2 percent), and Florida (22.1 percent). In Westchester County the foreign-born comprise 26.3 percent of the population. Of the foreign-born in Westchester County, 56.5 percent were born in Latin America, compared to 49.1 percent in New York State. In addition, there has been significant growth in the Asian segment in the United States, New York State, and in Westchester County. In 2023, foreign-born residents from Asian countries accounted for 30.5 percent of the immigrant population in the United States and 29.4 percent of the foreign-born population in New York State; in Westchester County 18.0 percent of the immigrant population was born in Asian countries. According to the 2022 *American Community Survey (five-year estimate)*, the foreign-born comprised 10.3 percent of the resident population in the North Salem School District (2023 *one-year estimates are not available for all school districts*). Of the foreign-born in the district, 39.0 percent were born in Asian countries, 34.0 percent were born in Europe, and 21.8 percent were born in Latin America.

The *Census Bureau* reported that more than 17.9 million children under age 18 lived with at least one foreign-born parent in the United States in 2023; this accounts for approximately 26 percent of children of this age. The five states with the greatest numbers of children under age 18 living with immigrant parents were California (3.7 million), Texas (2.4 million), Florida (1.5 million), New York (1.4 million), and New Jersey (over 792,000).

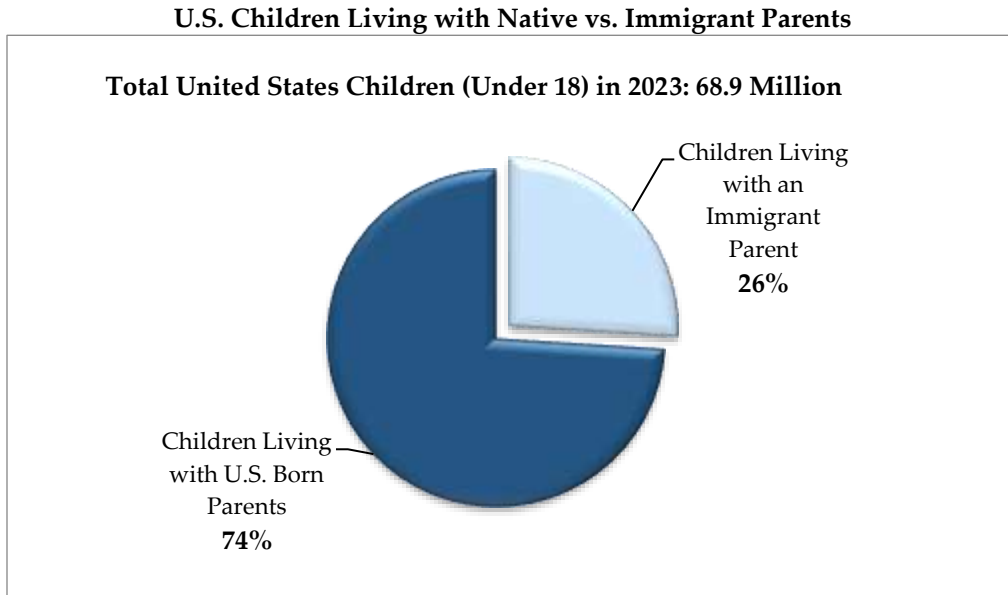


Figure 4 - U.S. Children in Immigrant Families
Source: U.S. Census Bureau

Recent trends in immigration have contributed to changes in the ethnic structure of the population in the United States. These trends, combined with the projected loss in the White population, due to mortalities as the baby boom cohort reaches the oldest ages, has resulted in an increasingly diverse population.

As shown in *Figure 5*, the proportion of the population among White individuals decreased from 69.1 percent in 2000 to 63.7 percent in 2010 and 57.8 percent in 2020. The White segment is expected to continue decreasing through 2060, while growth is forecasted in each of the racial/ethnic minority groups. By 2060, the combined racial/ethnic minority population is expected to account for 55.1 percent of the total population, up from 42.2 percent in 2020. According to the *2020 Census*, Hispanic individuals were the largest racial/ethnic minority group, comprising 18.7 percent of the population, followed by Black individuals (12.1 percent), Asian/other individuals (7.3 percent), and persons identifying as two or more races (4.1 percent). The Hispanic segment is expected to continue to be the largest racial/ethnic minority group, accounting for 26.9 percent of the total population by 2060. The proportion of the population among people identified as two or more races is projected to more than double by 2060 (4.8 percent), when compared to 2010 (1.9 percent).

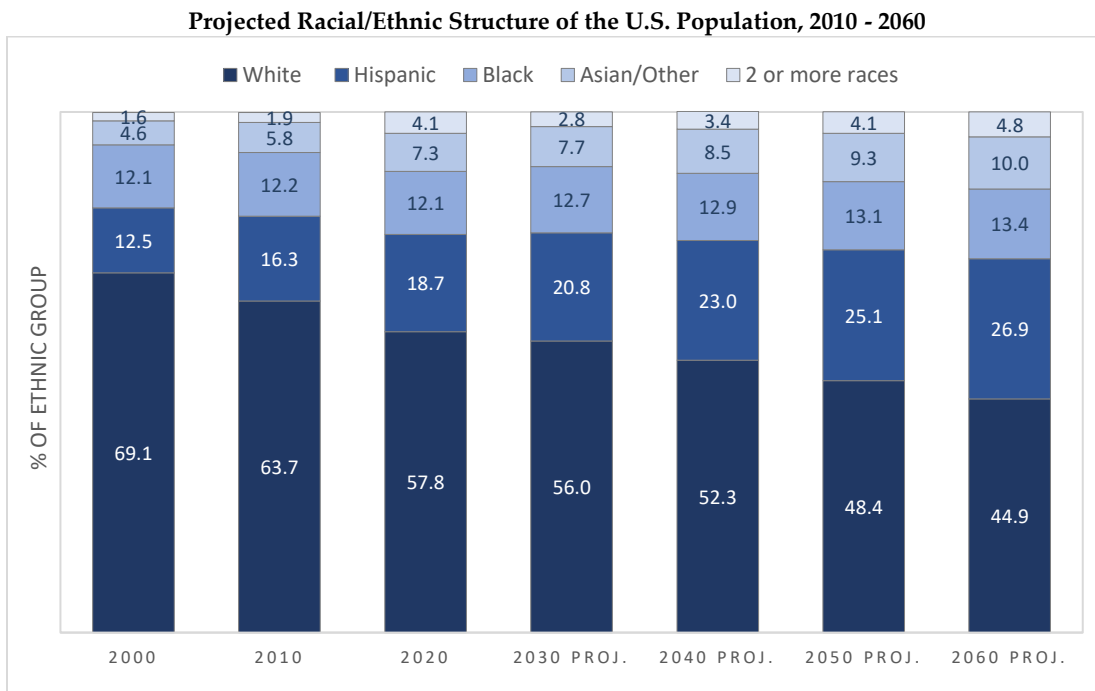


Figure 5 - Projected Racial Structure of the U.S. Population
Source U.S. Census Bureau

The ethnic composition within New York State has shifted from 2010 to 2020. According to *2020 Census* data, White individuals comprised 52.5 percent of the population in 2020, down from 58.3 percent in 2010, while racial/ethnic minorities comprised 47.5 percent of State residents. Hispanic individuals are the largest racial/ethnic minority group at 19.5 percent, followed by Black individuals (13.7 percent), Asian/other individuals (10.8 percent) and persons identifying as two or more races (3.6 percent). If the proportion of White individuals in New York State continues to decline over time, most of the population will be composed of racial/ethnic minorities. This shift towards a majority population of racial/ethnic minorities has already occurred in the states of California, Hawaii, Maryland, New Mexico, Texas, and Nevada.

In Westchester County, the proportion of the population among White individuals decreased from 57.4 percent in 2010 to 49.5 percent in 2020, marking a shift toward a majority of the population (50.5 percent) being composed of non-White racial/ethnic minorities. Hispanic individuals are the largest racial/ethnic minority group at 26.8 percent, followed by Black individuals (13.0 percent), Asian/others (7.4 percent) and those identifying as two or more races (3.2 percent).

The ethnic composition of the resident population within the North Salem Central School District has shifted, as well. From 2010 to 2020, the proportion of the population among White individuals decreased from 88.8 to 81.9 percent, while the proportion among Hispanic and Asian/other individuals increased from 6.9 to 10.8 percent and from 2.4 to 3.1 percent, respectively. Black individuals and persons identifying as two or more races represented 1.5 percent and 2.5 percent of the resident population in 2020, respectively.

C. HISTORICAL ENROLLMENT DATA

ENGLISH LANGUAGE LEARNERS

As defined by *NYSED*, English Language Learners (ELLs) are those who, because of foreign birth or ancestry, speak or understand a language other than English and speak or understand little or no English. Students who are identified as ELLs require support in order to become proficient in English and can participate in language assistance programs to help ensure that they attain English proficiency and meet the academic content and achievement standards expected of all students.

As shown in *Figure 6*, during the historical period (2013 - 2023), the number of ELLs in the North Salem CSD increased from 20 students (1.7 percent) in 2013-14 to 36 students (3.7 percent) in 2022-23, and then decreased to 27 students (2.8 percent) in 2023-24 (*latest available data*).

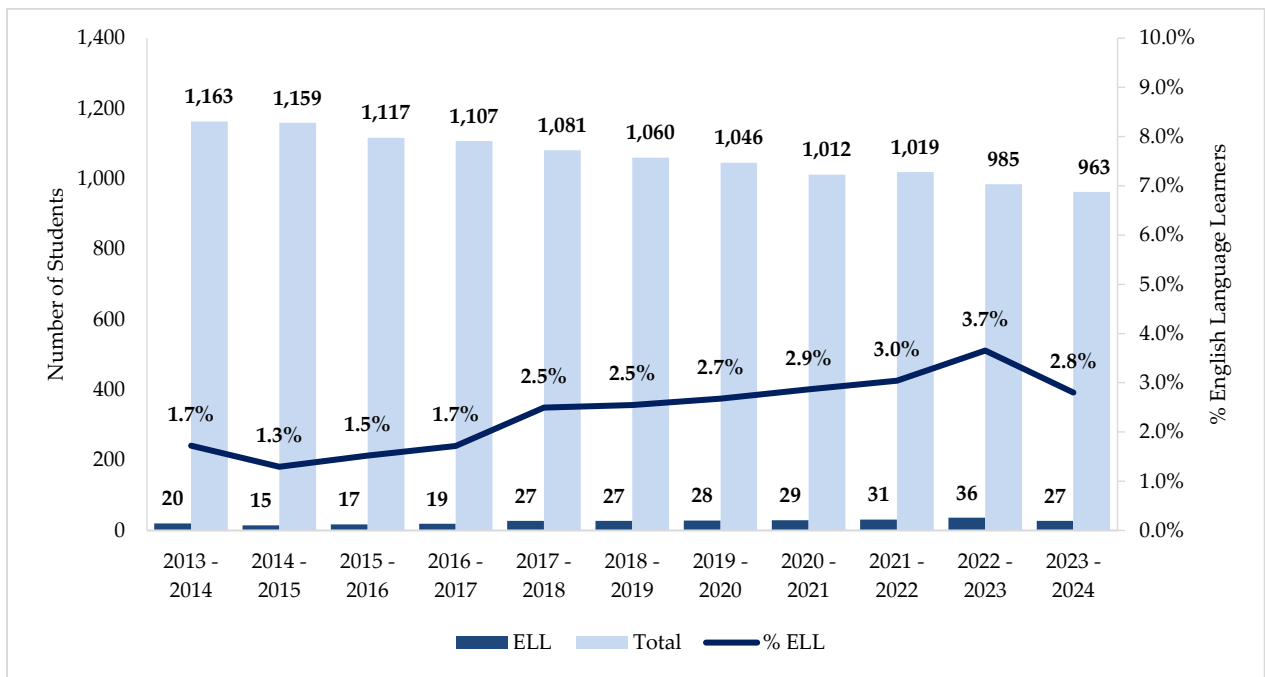


Figure 6 - English Language Learners by Year in the North Salem CSD, 2013 - 2023

Source: NYSED

Note: 2024 - 2025 ELL data are not yet available

As shown in *Figure 7*, in the 2022-2023 school year, ELL enrollment in the North Salem CSD was highest in kindergarten, where there were seven (10.0 percent) ELL students. Comparatively, there were 0 - 5 ELL students enrolled per grade in all other grades (*latest available data*).

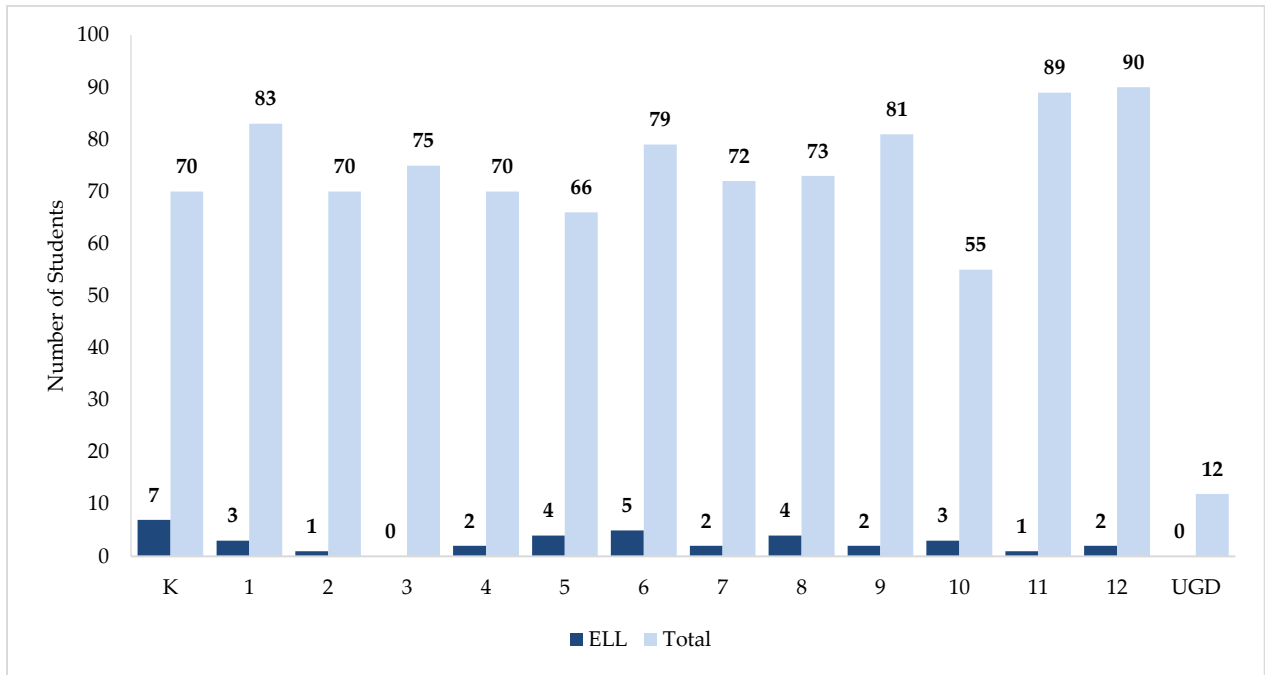


Figure 7 - English Language Learners by Grade Level in the North Salem CSD, 2022-23 School Year

Source: NYSED

Note: 2023 - 2024 ELL data by grade level are not yet available

STUDENTS WITH DISABILITIES

As defined by *NYSED*, students with disabilities (SWD) are those who have been identified as such by the Committee on Special Education and are receiving services under the Individuals with Disabilities Education Act (IDEA). Students with disabilities include those having an intellectual disability; hearing impairment, including deafness; speech or language impairment; visual impairment, including blindness; emotional disability; orthopedic impairment; autism; traumatic brain injury; developmental delay; other health impairment; specific learning disability; deaf-blindness; or multiple disabilities and who, by reason thereof, receive special education and related services under the IDEA according to an Individualized Education Program (IEP), Individualized Family Service Plan (IFSP), or a services plan.

As shown in *Figure 8*, despite a decrease in total enrollment, the number of Students with Disabilities increased in the North Salem CSD during the historical period (2013 - 2023), from 138 students (11.9 percent) in 2013-14 to 187 students (19.4 percent) in 2023-24 (*latest available data*).

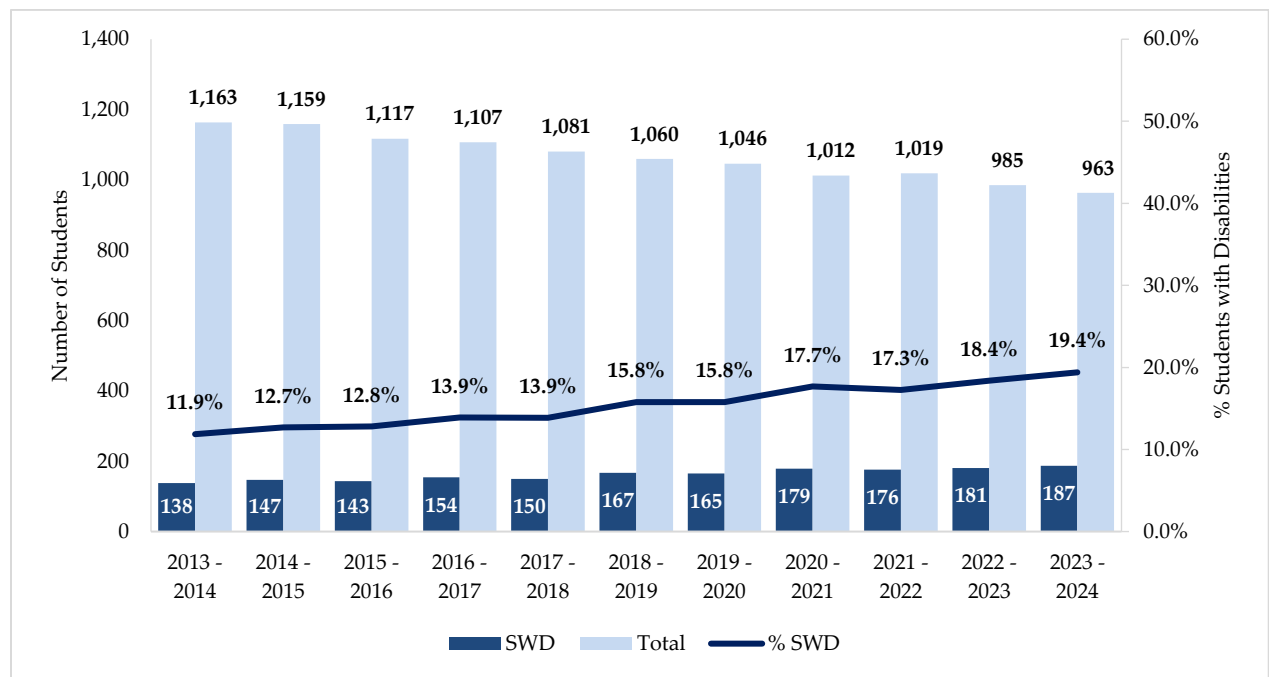


Figure 8 - Students with Disabilities by Year in the North Salem CSD, 2013 - 2023

Source: NYSED

Note: 2024 - 2025 SWD data are not yet available

ECONOMICALLY DISADVANTAGED STUDENTS

As defined by NYSED, economically disadvantaged students (ECDIS) are those who participate in, or whose family participates in, economic assistance programs, such as the free or reduced-price lunch programs, Social Security Insurance (SSI), Food Stamps, Foster Care, Refugee Assistance (cash or medical assistance), Earned Income Tax Credit (EITC), Home Energy Assistance Program (HEAP), Safety Net Assistance (SNA), Bureau of Indian Affairs (BIA), or Family Assistance: Temporary Assistance for Needy Families (TANF). If one student in a family is identified as low income, all students from that household (economic unit) may be identified as low income.

As shown in Figure 9, the number of Economically Disadvantaged Students enrolled in the North Salem CSD has increased over the historical period (2013 - 2023). Ninety-nine (8.5 percent) EDD students were enrolled in 2013-14 compared to 188 (19.5 percent) in 2023-24 (*latest available data*).

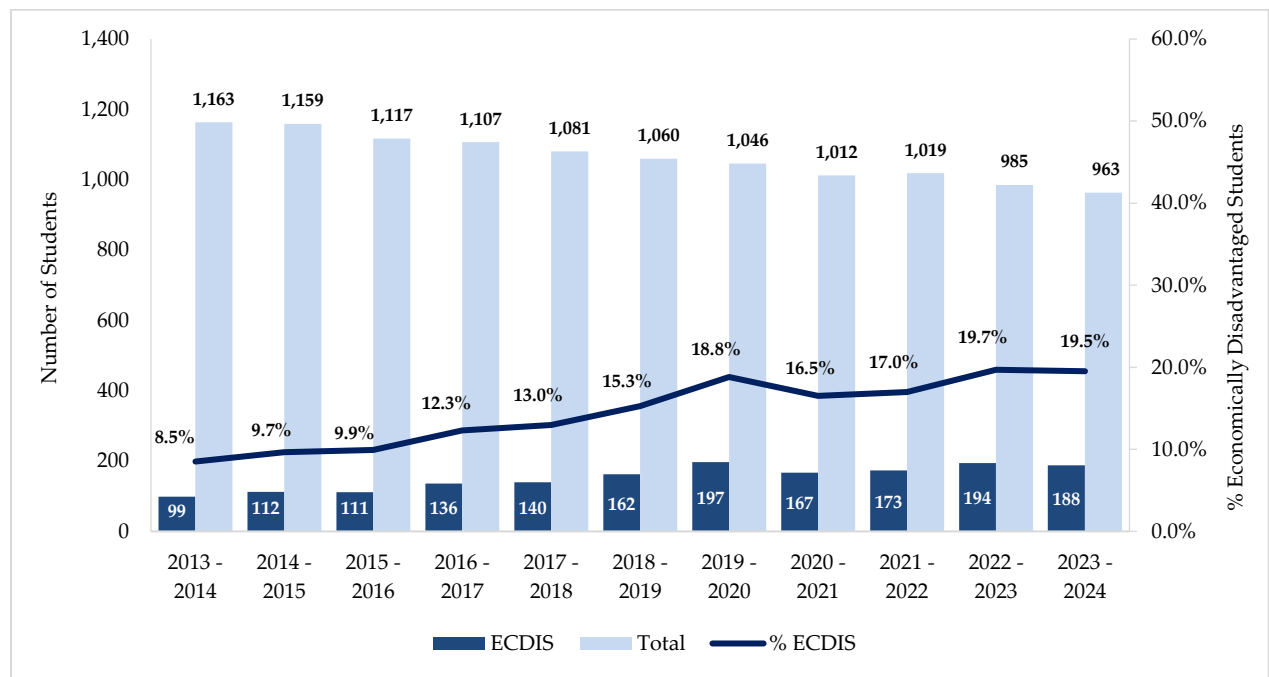


Figure 9 - Economically Disadvantaged Students by Year in the North Salem CSD, 2013 - 2023

Source: NYSED

Note: 2024 - 2025 ECDIS data are not yet available

D. HOUSING

According to the *New York State Association of Realtors (NYSAR)*, “U.S. home sales remained sluggish throughout the third quarter, as persistent affordability challenges weighed on demand, causing buyer activity to slump.” National trends continue to show an increase in total housing inventory, with supply reaching its highest level since May of 2020. However, the rise in existing home inventory has not been enough to meet current demand, causing increases in home prices nationwide. Mortgage rates are expected to continue decreasing through the end of the year, which may help to bring more buyers and sellers back to the market.

Data from the *NYSAR* indicates closed sales in New York State were down 2.3 percent in the third quarter of 2024, when compared to the same quarter in the prior year; the median sale price increased to \$429,000, representing a year-over-year increase of 7.3 percent. While median sale prices are expected to remain at an elevated level, the rate of appreciation is expected to slow due to high mortgage rates. Meanwhile, the number of homes for sale fell by 5.0 percent in the third quarter, when compared to the previous year. A strong housing market generally offers a 6.5-month supply of inventory; however, data from *NYSAR* indicates that there was a 3.3-month supply of available inventory in the third quarter. Inventory is expected to remain at a lower level as existing homeowners may be reluctant to move and then be forced to borrow at a much higher rate for their next home.

As shown in Table 2, in the third quarter of 2024, the residential real estate market in Westchester County posted a quarterly year-to-year sales loss of 7.6 percent; there were 1,626 completed home sales reported for the quarter, compared to 1,759 the previous year. The median sale price increased 10.2 percent during this period, increasing from \$725,000 in 2023 to \$799,000 in the third quarter of 2024.

Table 2 - Number of Home Sales and Median Prices in Westchester County

County	3 rd Quarter 2023		3 rd Quarter 2024		Change	
	# Sales	Median Price	# Sales	Median Price	# Sales	Median Price
Westchester County	1,759	\$725,000	1,626	\$799,000	-7.6%	+10.2%

Source: *NYSAR*

As shown in Table 3, housing turnover in the North Salem Central School District was at the lowest level of the historical period (2013 - 2023) in 2019, when 64 units were sold. Sales increased to the highest level of the period in 2021, when 117 units were sold; there were 76 units sold in 2023. The median sale price reached a historical high of \$744,500 in 2023; this is 56.8 percent higher when compared to the period low of \$474,880 recorded in 2015.

Table 3 - Home Sales in the North Salem CSD, 2013 - 2023

Year	Number Sold	Median Price
2013	74	\$495,000
2014	80	\$532,000
2015	67	\$474,880
2016	77	\$509,500
2017	77	\$580,000
2018	75	\$569,900
2019	64	\$545,000
2020	107	\$615,000
2021	117	\$685,200
2022	66	\$642,500
2023	76	\$744,500

Source: NYS Office of Real Property Services

Despite surging home prices, the national homeownership rate for the third quarter of 2024 (65.6 percent) represents relative stability compared to the third quarter of 2023 (66.0 percent). The rates in 2023 and 2024 reflect an increase compared to the ten-year (2014-2024) low of 63.5 percent recorded in the third quarter of 2016. In the third quarter of 2024, the homeownership rate was highest among householders aged 65+ (79.1 percent), followed by the 55 - 64, 45 - 54 and 35 - 44 age segments, with homeownership rates of 75.9, 69.7 and 62.3 percent, respectively. Young adults under the age of 35 recorded the lowest homeownership rate at 37.0 percent in the third quarter of 2024. High interest rates and continued price increases are expected to hamper further growth in the share of first-time home buyers entering the market.

According to the *Joint Center for Housing Studies of Harvard University*, “rental markets across the nation bounced back quickly from the pandemic-induced downturn, with rents rising at a record pace and vacancy rates hitting new lows [in 2022].” Vacancy rates have since returned to pre-pandemic levels, with a national rental vacancy rate of 6.9 percent reported in the third quarter of 2024. Although rental markets are experiencing reduced rent growth, home prices and rents remain elevated from pre-pandemic levels. Several factors continue to impact the housing and rental markets such as rising interest rates, escalating home prices, and the limited supply of homes for sale.

According to the *2020 Census*, 83 percent of occupied housing in the North Salem Central School District was owner occupied and 17 percent was renter occupied. This compares to Westchester County, with 60 percent of housing units occupied by an owner and 40 percent occupied by a renter.

The Planning Departments of the Towns of North Salem, Somers, and Southeast were contacted regarding the status of current building projects, as well as any new proposals before the Planning Boards. The Towns of North Salem and Somers reported that there were no new proposals before the Planning Boards and provided updates on previously reported projects as shown in Table 4. The Town of Southeast reported that there were no new proposals before the Planning Board.

Table 4 - Approved and Proposed Housing in the North Salem CSD

Project Name	# of Units	Status
<i>Town of North Salem</i>		
Gilport	7 SF	Final approval August 4, 2021 extended. Not yet filed
Hawley Woods	3 SF	Final approval pending
Hawley Road	Subdivision, 1 new lot, SF	Under preliminary review
Grant Road	Subdivision, 1 new lot, SF	Under preliminary review
A.P.C. Group	Subdivision, 2 new lots, SF	Under preliminary review
<i>Town of Somers</i>		
George - Butler Hill Rd.*	1 lot	Complete
Greenbriar - Greenbriar Dr.*	4 TH	Complete

Source: Towns of North Salem and Somers Planning Departments
 *indicates change since last report

E. NON-PUBLIC/CHARTER SCHOOL ENROLLMENT

Census Bureau data indicates that there were 4.86 million K - 12 students, or 9.1 percent of all school-age children, attending private schools in the United States during the 2022-23 school year. This represents a decline of 8.9 percent since 2020-21, when 5.33 million students, or 10.3 percent of all K - 12 children, attended private schools during the COVID-19 pandemic.

According to data from the *NYS Education Department*, non-public school enrollment in New York State decreased by 13.7 percent from 452,589 students in 2004-05 to 390,779 students in 2019-20. Subsequently, private school enrollment has stabilized during the past four years. In 2023-24, 382,310 students, or 13.6 percent of school age children, were enrolled in private schools, compared to 382,644 students, or 13.2 percent, in 2020-21. Within Westchester County, non-public school enrollment decreased by 23.6 percent (4,771 students) in the past ten years. Last year, there were 15,436 students (10.2 percent) enrolled in private schools, compared to 2013-14, when 20,207 students, or 12.1 percent of all school age children, attended non-public schools.

This year in 2024-25, 48 North Salem District resident students (4.5 percent) are attending non-public schools. Since 2014, non-public school enrollment has fluctuated, ranging from 3.7 - 6.0 percent of district resident students.

The *National Catholic Educational Association* reported that although PK - 12 enrollment has decreased since the 2013-14 school year by 281,251 students, or 14.2 percent, enrollment in recent years has stabilized. The PK - 12 Catholic school enrollment of 1,693,327 students in the 2023-24 school year represents a near zero percent change compared to the 2022-23 school year, with preschool students accounting for 10.1 percent of the total enrollment.

According to the *NYSED*, Catholic school enrollment in New York State has been steadily declining over the past twenty years. From 2003 to 2012, K - 12 enrollment decreased by 31.5 percent from 248,957 students to 170,515 students. The 2023-24 K - 12 enrollment of 109,953 students represents an additional decrease of 35.5 percent (60,562 students) compared to the 2012-13 school year.

Growth in the number of charter schools throughout the United States has impacted private school enrollment. Charter schools offer a tuition-free alternative to traditional public-school settings, while often providing individualized instruction as offered in many private schools. The *National Alliance of Charter Schools* reported that charter schools currently enroll 3.68 million children in 7,996 schools. As shown in *Figure 10*, data from the *National Alliance for Public Charter Schools* shows that charter school enrollment has more than tripled between 2005 and 2021 (latest available data).

Charter School Enrollment

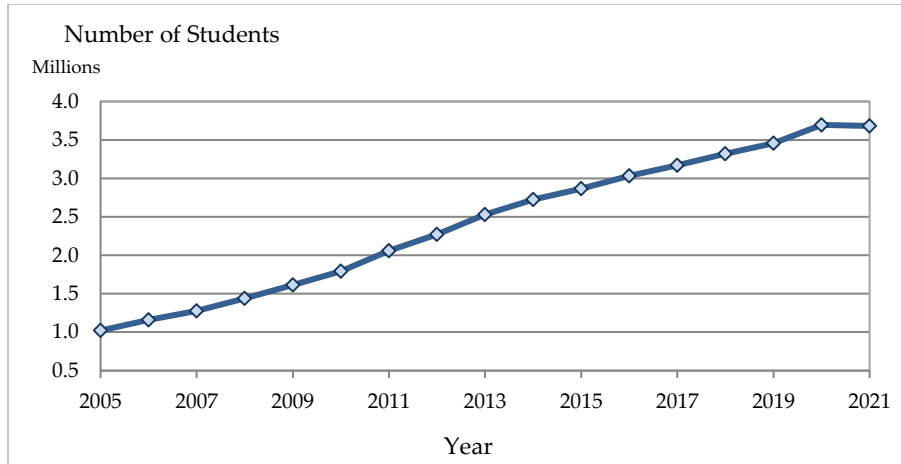


Figure 10 - Charter School Enrollment
Source: National Alliance for Public Charter Schools

According to the *New York State Education Department*, in 2023-24, there were 343 charter schools serving over 180,000 students in New York State. As shown in Table 5, charter school enrollment has grown by 13.9 percent since the 2019-20 school year. Also shown is that public school enrollment has declined by 7.6 percent during this period, while non-public school enrollment has declined 2.2 percent.

Table 5 - NYS Non-Public & Charter School Enrollment

School Year	Public Schools	Charter Schools	Non-Public Schools	Total K - 12 Enrollment
2019-20	2,421,858	159,211	390,779	2,971,848
	81.5%	5.4%	13.1%	
2020-21	2,342,473	170,500	382,644	2,895,617
	80.9%	5.9%	13.2%	
2021-22	2,275,355	173,182	382,499	2,831,036
	80.4%	6.1%	13.5%	
2022-23	2,247,106	175,388	380,788	2,803,282
	80.2%	6.3%	13.6%	
2023-24	2,237,191	181,322	382,310	2,800,823
	79.9%	6.5%	13.6%	

Source: NYSED

Note: Data does not include BOCES SPED students

Currently, there are three charter schools in operation in Westchester County, located in the Cities of Mount Vernon (2) and Yonkers.

F. ENROLLMENT PROJECTION METHODOLOGY

The *Cohort Survival Technique* was used to project the district’s enrollment patterns for the next ten years. Three fundamental inputs were essential:

1. Actual enrollment by grade for 2014 - 2024 for the district [Appendix A-2] and each school [Appendix A-8, A-10].
2. Grade-to-grade retention (migration) ratios for each two-grade transition to grades 1 - 12 for the past ten years for the district [Appendix A-2] and each school [Appendix A-8, A-10].
3. Projected kindergarten entering cohorts based on the number of live births in Westchester and Putnam Counties, with consideration given to school district births, five years before each year projected [Appendix A-4].

The *Cohort Survival Model* takes into consideration the normal community processes that affect school enrollment, which include:

4. The number of births and fertility rates
5. Normal in and out migration
6. Transfers to and from non-public and charter schools
7. Population variations
8. Resident family characteristics

The enrollment projections contained within this report are based on assumptions generated through the demographic analysis.

This analysis led to the following presumptions:

1. Population will remain stable due to limited new residential development within the district. However, increased levels of housing turnover may bring younger families into the district. The turnover of approximately 65 - 100 homes each year is anticipated to continue.
2. Kindergarten classes will be maintained close to the levels seen in the historical period, relative to housing turnover and continued changes in the population.
3. Non-public school enrollment is expected to remain at approximately 3 - 5 percent of district resident students.

The *Cohort Survival Model* is very accurate in forecasting future enrollment patterns, but the occurrence of certain conditions would warrant modifications in these projections. *These conditions include:*

- A level of new housing activity or a change in the level of housing turnover which is significantly higher or lower than that experienced by the district during the past three years.
- Expansion, consolidation, closing or the establishment of new non-public or charter schools.
- Major sociological changes or changed values and attitudes that affect anticipated family size and birthrate.
- Household characteristics that significantly differ from the past three - five years, including number of persons per household and age of household occupants.
- A major local or national crisis resulting in a notable change to economic conditions that affects employment, finance, and housing in a manner dissimilar to the past three - five years.

It is important for the reader to understand the nature of enrollment projections. Regardless of the methodology employed to produce projections, *all outcomes fall into three categories of reliability:*

Category 1 - Those projections based on students already enrolled in the system are the most reliable projections.

Category 2 - Those projections based on documented births are less reliable than those of Category 1.

Category 3 - Those projections based on estimates of future births are the least reliable.

Therefore, the most reliable projections are those calculated for the periods closest in time. Projections for periods further out in time are less reliable, particularly those beyond five years from the year of the study. The five-year period (2025 - 2029) projections are those best used in district planning and decision making because this period consists mainly of Category 1 projections.

It is noted that the overall enrollment projections produced by Western Suffolk BOCES generally fall within a 4 percent margin of error. The greatest discrepancies in projections occur in the smallest subsets of those projections. For example, the projections for the district are likely to be the most accurate, while the projection of a building's particular grade level in a specific year is likely to be the least accurate. It is advised that updates to projections be continued on a periodic basis to account for subtle shifts in migration trends and demographic factors.

G. ACCURACY OF PREVIOUS PROJECTIONS

A comparison was made between the enrollment projections presented in the 2023-24 Western Suffolk BOCES study and the actual enrollment observed in the 2024-25 school year. As shown in *Appendix A-1* and Table 6, the 2023-24 study projected the 2024-25 K - 12 enrollment at 968 students, while there were actually 940 students enrolled. This projection was within 28 students of the actual enrollment, reflecting accuracy within 3.0 percent.

The projections for each grade level showed variations ranging from 1 - 15 students, when projections were compared to actual enrollments, with the largest difference (15) being for kindergarten. This can be attributed to the fact that the 2024 kindergarten enrollment (67 students) was the lowest it has been for the past five years, despite the number of 2019 births (58 births) being among the highest of the historical period (2009 - 2022). The K - 5 grade configuration was projected within 28 student, or 6.3 percent; the 6 - 8 and 9 - 12 grade configurations were both projected to the exact number of students, when compared to the actual enrollment.

Table 6 - Accuracy of the Western Suffolk BOCES 2023-24 Projections for 2024-25

Grades	2024-25 Actual	2024-25 Projected	Difference	Projected/Actual
K - 12	940	968	28	103.0%
K - 5	446	474	28	106.3%
6 - 8	212	212	0	100.0%
9 - 12	282	282	0	100.0%

H. DISTRICT ENROLLMENT

The North Salem Central School District educates students in grades K - 12 in two district schools; Pequenakonck Elementary School houses grades K - 5 and North Salem Middle School/High School houses grades 6 - 12.

Table 7 presents the current and projected enrollment through 2034 for the district and each grade configuration. It is shown that the elementary (K - 5) grades are expected to be at their projection peak enrollment in 2026 and the middle (6 - 8) grades are expected to be at their projection period peak enrollment in 2027 and 2029; the high school (9 - 12) grade configuration is forecasted to enroll the greatest number of students in 2031 and 2033. District enrollment (K - 12) is expected to be at its projection period peak in 2031, when 971 students are anticipated; this is an increase of 31 students, when compared to the current enrollment.

Table 7 - Projected North Salem CSD Enrollment

Year	K - 5	6 - 8	9 - 12	K - 12
Actual 2024	446	212	282	940
Projected 2025	441	216	294	951
2026	451*	223	278	952
2027	440	242*	274	956
2028	443	233	283	959
2029	440	242*	275	957
2030	442	225	300	967
2031	440	229	302*	971*
2032	434	231	299	964
2033	430	237	302*	969
2034	428	236	290	954

* = Denotes peak enrollment during 2025 - 2034

District enrollment [Appendix A-2] consisted of 1,162 students in grades K - 12 in 2014; this was the historical peak enrollment. Subsequently, losses in nine of the last ten years led to the current enrollment of 940 students in 2024. A loss of 222 students, or 19.1 percent, is noted during the historical period.

Small gains are projected in seven of the next ten years. The forecasted 2034 enrollment of 954 students represents a small gain of 14 students, or 1.5 percent, when compared to the current enrollment.

The projected enrollment can be attributed to several factors:

- ☞ **First**, kindergarten enrollment fluctuated within 54 - 82 students per year between 2013 and 2024; there are 67 students enrolled this year. During the next three years kindergarten cohorts are expected to range from 71 - 75 students. Subsequently, kindergarten enrollment is projected to be at a slightly lower level, with 68 - 70 students expected each year from 2028 to 2034 [Appendix A-4].
- ☞ **Second**, the incoming kindergarten class was smaller than the exiting twelfth grade class of the previous year in each of the last ten years. However, this trend has shifted and larger kindergarten classes are expected to replace smaller 12th grade classes in four of the next ten years. Additionally, the entering kindergarten class is projected to be the same size as the exiting 12th grade class in two years [Appendix A-7].
- ☞ **Third**, migration ratios show year-to-year fluctuations. On average, the district gains students transitioning to grades 1, 2, 4, 5, 6 & 12 and maintains students in movement to grades 3, 7, & 8; average losses are recorded to grades 9, 10 & 11 [Appendix A-2].
- ☞ **Fourth**, the average grade level size decreased in grades 3 - 12 during 2019 - 2024 as compared to 2014 - 2019. However, grade level size increases are anticipated in grades 2 - 7 during 2024 - 2029 and in grades 7 - 12 during 2029 - 2034 [Appendix A-7].

I. ENROLLMENT OF GRADE CONFIGURATIONS

ELEMENTARY GRADES (K - 5) ENROLLMENT [Appendix A-3, A-6]

Pequenakonck Elementary School [Appendix A-8, A-9]

Pequenakonck Elementary School enrolled 487 students in grades K - 5 in 2014; this was the historical peak enrollment. Subsequently, losses in six of the last ten years led to the current enrollment of 446 students in 2024. A loss of 41 students, or 8.4 percent, is noted during the historical period.

Losses are expected in seven of the next ten years. The forecasted 2034 enrollment of 428 students represents a loss of 18 students, or 4.0 percent, when compared to the current enrollment. It is anticipated that the kindergarten will enroll 71 - 75 students during the next three years and 68 - 70 students from 2028 through 2034.

Pequenakonck Elementary School displays the average trend to gain students in transition to grades 1, 2, 4, and 5, and maintain students in transition to third grade. However, the entering kindergarten class is expected to be smaller than the exiting fifth grade class of the previous year in nine of the next ten years, minimizing any gains in transition. These factors will result in the projected enrollment pattern.

This school currently houses twenty-six (26) sections for the instruction of four sections per grade level (K - 5) and two sections of self-contained special education. The average section size for this school is 18.6 students, ranging from an average of 16.8 students in kindergarten to 21.5 students in third grade (*Note: Graded SC SPED students are included in grade level counts; therefore, the actual average class sizes might be lower than shown*).

Table 8 presents the current and projected elementary enrollment and classroom needs for Pequenaconck Elementary School through 2034. It is shown that the district currently houses 26 sections for the instruction of grades K - 5, including two sections of self-contained special education. The projected K - 5 enrollment suggests the need for 23 - 25 sections per year, including two sections of self-contained special education, throughout the projection period, in order to maintain class sizes at a maximum of 20 students in grades K - 2 and 25 students in grades 3 - 5. When compared to the current allocation of sections, it is anticipated that the district will require two fewer sections next year and three fewer sections in 2034 [Appendix A-9].

Table 8 - Projected North Salem CSD Elementary Enrollment & Instructional Sections

Year	K - 5 Enrollment	Instructional Sections
Actual 2024	446	26
Projected 2025	441	24
2026	451*	24
2027	440	24
2028	443	24
2029	440	24
2030	442	25
2031	440	25
2032	434	24
2033	430	23
2034	428	23

* = Denotes peak enrollment during 2025 - 2034
 Note: includes self-contained special education sections

MIDDLE/SECONDARY GRADES (6 - 12) ENROLLMENT

[Appendix A-3, A-6]

North Salem Middle School/High School *[Appendix A-10, A-11, A-12]*

Enrollment in the middle grades (6 - 8) at North Salem Middle School/High School consisted of 308 students in 2014; this was the historical peak enrollment. Subsequently, losses in eight of the last ten years led to the current enrollment of 212 students in 2024. A loss of 96 students, or 31.2 percent, is noted during the historical period.

Enrollment is projected to increase, with gains expected in seven of the next ten years. The projected 2034 enrollment of 236 students represents an overall gain of 24 students, or 11.3 percent, when compared to the current enrollment.

Enrollment in the high school grades (9 - 12) consisted of 367 students in 2014. Gains in the next three years resulted in the historical peak enrollment of 390 students in 2017. Subsequently, losses in each of the last seven years led to the current enrollment of 282 students in 2024. A loss of 85 students, or 23.2 percent, is noted during the historical period.

Enrollment is projected to increase slightly with small gains expected in five of the next ten years. The projected 2034 enrollment of 290 students represents an overall gain of 8 students, or 2.8 percent, when compared to the current enrollment.

North Salem Middle School/High School displays the average trend to maintain students transitioning to grades 7 and 8, lose students in movement to grades 9 - 11, and gain students to twelfth grade. The incoming sixth grade class is expected to be larger than the graduating twelfth grade of the previous year in eight of the next ten years, minimizing the losses occurring through transition. These factors will contribute to the projected enrollment pattern.

Table 9 displays the current and projected middle and high school enrollments as well as the sectional needs for the North Salem Middle School/High School. It is shown that the middle (6 - 8) grades are expected to enroll the greatest number of students in 2027 and 2029 and the high school (9 - 12) grade configuration is forecasted to enroll the greatest number of students in 2031 and 2033. The combined middle and high school enrollment is expected to be at its peak in 2033, when 539 students are anticipated; this is 45 more students than are currently enrolled.

Projections suggest that a total of 21 rooms will be needed in 2025, increasing to 22 rooms by 2033, for the instruction of English Language Arts (ELA), math, science, social studies, language, health, computer and special education, while maintaining an optimal class size of 26 students per section [Appendix A-12].

Table 9 - Projected North Salem CSD Middle & High School Enrollment

Year	Enrollment			Instructional Sections
	Grades 6 - 8	Grades 9 - 12	Grades 6 - 12	Grades 6 - 12
Actual 2024	212	282	494	
Projected 2025	216	294	510	21
2026	223	278	501	20
2027	242*	274	516	21
2028	233	283	516	20
2029	242*	275	517	21
2030	225	300	525	21
2031	229	302*	531	21
2032	231	299	530	21
2033	237	302*	539*	22
2034	236	290	526	22

* = Denotes peak enrollment during 2025 - 2034

Appendix A

=====

NORTH SALEM CENTRAL SCHOOL DISTRICT
 ACCURACY OF WESTERN SUFFOLK BOCES 2023-24 PROJECTIONS FOR 2024-25

=====

Grade	Actual 2024-25	Projected	Difference	
KINDERGARTEN	67	82	15	
FIRST	74	82	8	
SECOND	69	74	5	
THIRD	86	84	-2	
FOURTH	69	72	3	
FIFTH	81	80	-1	
SIXTH	71	70	-1	
SEVENTH	63	60	-3	
EIGHTH	78	82	4	
NINTH	71	71	0	
TENTH	73	71	-2	
ELEVENTH	75	80	5	
TWELFTH	63	60	-3	Projected/Actual
K - 12	940	968	28	103.0%
K - 5	446	474	28	106.3%
6 - 8	212	212	0	100.0%
9 - 12	282	282	0	100.0%

=====

NORTH SALEM CENTRAL SCHOOL DISTRICT
HISTORICAL DISTRICT ENROLLMENT

GRADE	Oct-14	Oct-15	Oct-16	Oct-17	Oct-18	Oct-19	Oct-20	Oct-21	Oct-22	Oct-23	Oct-24
KINDERGARTEN	77	69	66	54	69	63	68	82	70	79	67
FIRST	69	74	74	63	61	69	70	73	82	72	74
SECOND	62	68	76	78	66	62	71	76	71	84	69
THIRD	101	59	77	74	77	72	64	71	74	70	86
FOURTH	80	93	58	79	76	80	74	66	70	80	69
FIFTH	98	85	96	60	85	78	73	79	67	70	81
SIXTH	94	96	89	97	57	92	78	74	79	61	71
SEVENTH	112	91	96	91	96	59	88	76	71	81	63
EIGHTH	102	110	94	97	96	97	63	87	73	73	78
NINTH	89	97	106	90	92	94	91	62	82	72	71
TENTH	82	92	96	112	85	91	93	89	55	81	73
ELEVENTH	96	86	95	96	110	83	90	90	89	60	75
TWELFTH	100	95	84	92	93	104	83	95	89	89	63
UNGRADED	0	0	0	0	0	2	9	5	6	0	0
TOTAL	1,162	1,115	1,107	1,083	1,063	1,046	1,015	1,025	978	972	940
CHANGE		-47	-8	-24	-20	-17	-31	10	-47	-6	-32
% CHANGE		-4.0%	-0.7%	-2.2%	-1.8%	-1.6%	-3.0%	1.0%	-4.6%	-0.6%	-3.3%

note: data for all years provided by the district

MIGRATION	14 - 15	15 - 16	16 - 17	17 - 18	18 - 19	19 - 20	20 - 21	21 - 22	22 - 23	23 - 24	AVERAGE
K - 1	96.1%	107.2%	95.5%	113.0%	100.0%	111.1%	107.4%	100.0%	102.9%	93.7%	101.0%
1 - 2	98.6%	102.7%	105.4%	104.8%	101.6%	102.9%	108.6%	97.3%	102.4%	95.8%	101.0%
2 - 3	95.2%	113.2%	97.4%	98.7%	109.1%	103.2%	100.0%	97.4%	98.6%	102.4%	100.3%
3 - 4	92.1%	98.3%	102.6%	102.7%	103.9%	102.8%	103.1%	98.6%	108.1%	98.6%	102.2%
4 - 5	106.3%	103.2%	103.4%	107.6%	102.6%	91.3%	106.8%	101.5%	100.0%	101.3%	100.9%
5 - 6	98.0%	104.7%	101.0%	95.0%	108.2%	100.0%	101.4%	100.0%	91.0%	101.4%	100.7%
6 - 7	96.8%	100.0%	102.2%	99.0%	103.5%	95.7%	97.4%	95.9%	102.5%	103.3%	99.8%
7 - 8	98.2%	103.3%	101.0%	105.5%	101.0%	106.8%	98.9%	96.1%	102.8%	96.3%	100.2%
8 - 9	95.1%	96.4%	95.7%	94.8%	97.9%	93.8%	98.4%	94.3%	98.6%	97.3%	97.1%
9 - 10	103.4%	99.0%	105.7%	94.4%	98.9%	98.9%	97.8%	88.7%	98.8%	101.4%	99.2%
10 - 11	104.9%	103.3%	100.0%	98.2%	97.6%	98.9%	96.8%	100.0%	109.1%	92.6%	98.6%
11 - 12	99.0%	97.7%	96.8%	96.9%	94.5%	100.0%	105.6%	98.9%	100.0%	105.0%	101.3%

NORTH SALEM CENTRAL SCHOOL DISTRICT
HISTORICAL DISTRICT ENROLLMENT BY GRADE CONFIGURATION

GRADE	Oct-14	Oct-15	Oct-16	Oct-17	Oct-18	Oct-19	Oct-20	Oct-21	Oct-22	Oct-23	Oct-24
KINDERGARTEN	77	69	66	54	69	63	68	82	70	79	67
FIRST	69	74	74	63	61	69	70	73	82	72	74
SECOND	62	68	76	78	66	62	71	76	71	84	69
THIRD	101	59	77	74	77	72	64	71	74	70	86
FOURTH	80	93	58	79	76	80	74	66	70	80	69
FIFTH	98	85	96	60	85	78	73	79	67	70	81
UNGRADED	0	0	0	0	0	2	6	1	2	0	0
TOTAL K - 5	487	448	447	408	434	426	426	448	436	455	446
CHANGE		-39	-1	-39	26	-8	0	22	-12	19	-9
% CHANGE		-8.0%	-0.2%	-8.7%	6.4%	-1.8%	0.0%	5.2%	-2.7%	4.4%	-2.0%
SIXTH	94	96	89	97	57	92	78	74	79	61	71
SEVENTH	112	91	96	91	96	59	88	76	71	81	63
EIGHTH	102	110	94	97	96	97	63	87	73	73	78
UNGRADED	0	0	0	0	0	0	0	3	3	0	0
TOTAL 6 - 8	308	297	279	285	249	248	229	240	226	215	212
CHANGE		-11	-18	6	-36	-1	-19	11	-14	-11	-3
% CHANGE		-3.6%	-6.1%	2.2%	-12.6%	-0.4%	-7.7%	4.8%	-5.8%	-4.9%	-1.4%
NINTH	89	97	106	90	92	94	91	62	82	72	71
TENTH	82	92	96	112	85	91	93	89	55	81	73
ELEVENTH	96	86	95	96	110	83	90	90	89	60	75
TWELFTH	100	95	84	92	93	104	83	95	89	89	63
UNGRADED	0	0	0	0	0	0	3	1	1	0	0
TOTAL 9 - 12	367	370	381	390	380	372	360	337	316	302	282
CHANGE		3	11	9	-10	-8	-12	-23	-21	-14	-20
% CHANGE		0.8%	3.0%	2.4%	-2.6%	-2.1%	-3.2%	-6.4%	-6.2%	-4.4%	-6.6%
TOTAL 6 - 12	675	667	660	675	629	620	589	577	542	517	494
CHANGE		-8	-7	15	-46	-9	-31	-12	-35	-25	-23
% CHANGE		-1.2%	-1.0%	2.3%	-6.8%	-1.4%	-5.0%	-2.0%	-6.1%	-4.6%	-4.4%
TOTAL K - 12	1,162	1,115	1,107	1,083	1,063	1,046	1,015	1,025	978	972	940
CHANGE		-47	-8	-24	-20	-17	-31	10	-47	-6	-32
% CHANGE		-4.0%	-0.7%	-2.2%	-1.8%	-1.6%	-3.0%	1.0%	-4.6%	-0.6%	-3.3%

NORTH SALEM CENTRAL SCHOOL DISTRICT
KINDERGARTEN PROJECTIONS

Birth Year	Births Westchester & Putnam Counties	SD	Enrollment Year	District K	Ratios K/ 2 county births
2009	12,037	63	2014	77	0.0064
2010	12,035	45	2015	69	0.0057
2011	11,585	42	2016	66	0.0057
2012	11,266	43	2017	54	0.0048
2013	11,359	65	2018	69	0.0061
2014	11,466	47	2019	63	0.0055
2015	11,452	47	2020	68	0.0059
2016	11,090	58	2021	82	0.0074
2017	11,227	41	2022	70	0.0062
2018	10,956	51	2023	79	0.0072
2019	10,703	58	2024	67	0.0063
2020	10,465	53	2025	71	
2021	10,974	58	2026	75	
provisional 2022	10,823	61	2027	73	
est. 2023	10,552		2028	70	
est. 2024	10,627		2029	70	
est. 2025	10,480		2030	69	
est. 2026	10,484		2031	69	
est. 2027	10,387		2032	69	
est. 2028	10,445		2033	69	0.0061
est. 2029	10,281		2034	68	historical average

Note: 2009-2021: finalized births reported by DOH@NYS; 2022: provisional births received from DOH@NYS and subject to change; 2023 Westchester County births reported by CDC

=====

NORTH SALEM CENTRAL SCHOOL DISTRICT
PROJECTED DISTRICT ENROLLMENT

=====

GRADE	Oct-24	Oct-25	Oct-26	Oct-27	Oct-28	Oct-29	Oct-30	Oct-31	Oct-32	Oct-33	Oct-34
	Actual										
KINDERGARTEN	67	71	75	73	70	70	69	69	69	69	68
FIRST	74	68	72	76	74	71	71	70	70	70	70
SECOND	69	75	69	73	77	75	72	72	71	71	71
THIRD	86	69	75	69	73	77	75	72	72	71	71
FOURTH	69	88	71	77	71	75	79	77	74	74	73
FIFTH	81	70	89	72	78	72	76	80	78	75	75
SIXTH	71	82	70	90	73	79	73	77	81	79	76
SEVENTH	63	71	82	70	90	73	79	73	77	81	79
EIGHTH	78	63	71	82	70	90	73	79	73	77	81
NINTH	71	76	61	69	80	68	87	71	77	71	75
TENTH	73	70	75	61	68	79	67	86	70	76	70
ELEVENTH	75	72	69	74	60	67	78	66	85	69	75
TWELFTH	63	76	73	70	75	61	68	79	67	86	70
TOTAL	940	951	952	956	959	957	967	971	964	969	954
CHANGE		11	1	4	3	-2	10	4	-7	5	-15
% CHANGE		1.2%	0.1%	0.4%	0.3%	-0.2%	1.0%	0.4%	-0.7%	0.5%	-1.5%

=====

Note: The shaded area denotes grade-level students already in the system.

=====

NORTH SALEM CENTRAL SCHOOL DISTRICT
PROJECTED DISTRICT ENROLLMENT BY GRADE CONFIGURATION

GRADE	Oct-24	Oct-25	Oct-26	Oct-27	Oct-28	Oct-29	Oct-30	Oct-31	Oct-32	Oct-33	Oct-34
	Actual										
KINDERGARTEN	67	71	75	73	70	70	69	69	69	69	68
FIRST	74	68	72	76	74	71	71	70	70	70	70
SECOND	69	75	69	73	77	75	72	72	71	71	71
THIRD	86	69	75	69	73	77	75	72	72	71	71
FOURTH	69	88	71	77	71	75	79	77	74	74	73
FIFTH	81	70	89	72	78	72	76	80	78	75	75
TOTAL K - 5	446	441	451	440	443	440	442	440	434	430	428
CHANGE		-5	10	-11	3	-3	2	-2	-6	-4	-2
% CHANGE		-1.1%	2.3%	-2.4%	0.7%	-0.7%	0.5%	-0.5%	-1.4%	-0.9%	-0.5%
SIXTH	71	82	70	90	73	79	73	77	81	79	76
SEVENTH	63	71	82	70	90	73	79	73	77	81	79
EIGHTH	78	63	71	82	70	90	73	79	73	77	81
TOTAL 6 - 8	212	216	223	242	233	242	225	229	231	237	236
CHANGE		4	7	19	-9	9	-17	4	2	6	-1
% CHANGE		1.9%	3.2%	8.5%	-3.7%	3.9%	-7.0%	1.8%	0.9%	2.6%	-0.4%
NINTH	71	76	61	69	80	68	87	71	77	71	75
TENTH	73	70	75	61	68	79	67	86	70	76	70
ELEVENTH	75	72	69	74	60	67	78	66	85	69	75
TWELFTH	63	76	73	70	75	61	68	79	67	86	70
TOTAL 9 - 12	282	294	278	274	283	275	300	302	299	302	290
CHANGE		12	-16	-4	9	-8	25	2	-3	3	-12
% CHANGE		4.3%	-5.4%	-1.4%	3.3%	-2.8%	9.1%	0.7%	-1.0%	1.0%	-4.0%
TOTAL 6 - 12	494	510	501	516	516	517	525	531	530	539	526
CHANGE		16	-9	15	0	1	8	6	-1	9	-13
% CHANGE		3.2%	-1.8%	3.0%	0.0%	0.2%	1.5%	1.1%	-0.2%	1.7%	-2.4%
TOTAL K - 12	940	951	952	956	959	957	967	971	964	969	954
CHANGE		11	1	4	3	-2	10	4	-7	5	-15
% CHANGE		1.2%	0.1%	0.4%	0.3%	-0.2%	1.0%	0.4%	-0.7%	0.5%	-1.5%

NORTH SALEM CENTRAL SCHOOL DISTRICT
AVERAGE GRADE LEVEL SIZE

GRADE	1 14 - 19	2 19 - 24	3 24 - 29	4 29 - 34	2/1	change 3/2	4/3
KINDERGARTEN	66	72	71	69	9.1%	-1.4%	-2.8%
FIRST	68	73	73	70	7.4%	0.0%	-4.1%
SECOND	69	72	73	72	4.3%	1.4%	-1.4%
THIRD	77	73	75	73	-5.2%	2.7%	-2.7%
FOURTH	78	73	75	75	-6.4%	2.7%	0.0%
FIFTH	84	75	77	76	-10.7%	2.7%	-1.3%
SIXTH	88	76	78	78	-13.6%	2.6%	0.0%
SEVENTH	91	73	75	77	-19.8%	2.7%	2.7%
EIGHTH	99	79	76	79	-20.2%	-3.8%	3.9%
NINTH	95	79	71	75	-16.8%	-10.1%	5.6%
TENTH	93	80	71	75	-14.0%	-11.3%	5.6%
ELEVENTH	94	81	70	73	-13.8%	-13.6%	4.3%
TWELFTH	95	87	70	72	-8.4%	-19.5%	2.9%

DISPLACEMENT BETWEEN ENTERING & EXITING GRADES

YEAR	GRADE 12	YEAR	K	DIFFERENCE
2014	100	2015	69	-31
2015	95	2016	66	-29
2016	84	2017	54	-30
2017	92	2018	69	-23
2018	93	2019	63	-30
2019	104	2020	68	-36
2020	83	2021	82	-1
2021	95	2022	70	-25
2022	89	2023	79	-10
2023	89	2024	67	-22
2024	63	2025	71	8
2025	76	2026	75	-1
2026	73	2027	73	0
2027	70	2028	70	0
2028	75	2029	70	-5
2029	61	2030	69	8
2030	68	2031	69	1
2031	79	2032	69	-10
2032	67	2033	69	2
2033	86	2034	68	-18

Average Difference 2014 - 2019	-29
Average Difference 2019 - 2024	-19
Average Difference 2024 - 2029	0
Average Difference 2029 - 2034	-3

PEQUENAKONCK ELEMENTARY SCHOOL
HISTORICAL ENROLLMENT

GRADE	Oct-14	Oct-15	Oct-16	Oct-17	Oct-18	Oct-19	Oct-20	Oct-21	Oct-22	Oct-23	Oct-24
KINDERGARTEN	77	69	66	54	69	63	68	82	70	79	67
FIRST	69	74	74	63	61	69	70	73	82	72	74
SECOND	62	68	76	78	66	62	71	76	71	84	69
THIRD	101	59	77	74	77	72	64	71	74	70	86
FOURTH	80	93	58	79	76	80	74	66	70	80	69
FIFTH	98	85	96	60	85	78	73	79	67	70	81
UNGRADED	0	0	0	0	0	2	6	1	2	0	0
TOTAL	487	448	447	408	434	426	426	448	436	455	446
% CHANGE		-8.0%	-0.2%	-8.7%	6.4%	-1.8%	0.0%	5.2%	-2.7%	4.4%	-2.0%

note: data for all years provided by the district

MIGRATION	14 - 15	15 - 16	16 - 17	17 - 18	18 - 19	19 - 20	20 - 21	21 - 22	22 - 23	23 - 24	AVERAGE
K - 1	96.1%	107.2%	95.5%	113.0%	100.0%	111.1%	107.4%	100.0%	102.9%	93.7%	101.0%
1 - 2	98.6%	102.7%	105.4%	104.8%	101.6%	102.9%	108.6%	97.3%	102.4%	95.8%	101.0%
2 - 3	95.2%	113.2%	97.4%	98.7%	109.1%	103.2%	100.0%	97.4%	98.6%	102.4%	100.3%
3 - 4	92.1%	98.3%	102.6%	102.7%	103.9%	102.8%	103.1%	98.6%	108.1%	98.6%	102.2%
4 - 5	106.3%	103.2%	103.4%	107.6%	102.6%	91.3%	106.8%	101.5%	100.0%	101.3%	100.9%

PEQUENAKONCK ELEMENTARY SCHOOL
PROJECTED ENROLLMENT

GRADE	Oct-24	Oct-25	Oct-26	Oct-27	Oct-28	Oct-29	Oct-30	Oct-31	Oct-32	Oct-33	Oct-34
	Actual										
KINDERGARTEN	67	71	75	73	70	70	69	69	69	69	68
FIRST	74	68	72	76	74	71	71	70	70	70	70
SECOND	69	75	69	73	77	75	72	72	71	71	71
THIRD	86	69	75	69	73	77	75	72	72	71	71
FOURTH	69	88	71	77	71	75	79	77	74	74	73
FIFTH	81	70	89	72	78	72	76	80	78	75	75
TOTAL	446	441	451	440	443	440	442	440	434	430	428
% CHANGE		-1.1%	2.3%	-2.4%	0.7%	-0.7%	0.5%	-0.5%	-1.4%	-0.9%	-0.5%

PEQUENAKONCK ELEMENTARY SCHOOL
PROJECTED ENROLLMENT - SECTIONAL ANALYSIS

based on maximum class sizes: grades K - 2 = 20, grades 3 - 5 = 25

GRADE	Oct-24	Oct-25	Oct-26	Oct-27	Oct-28	Oct-29	Oct-30	Oct-31	Oct-32	Oct-33	Oct-34
	Actual										
KINDERGARTEN (20)	67	71	75	73	70	70	69	69	69	69	68
# of Sections	4	4	4	4	4	4	4	4	4	4	4
Avg Section Size	16.8	17.8	18.8	18.3	17.5	17.5	17.3	17.3	17.3	17.3	17.0
FIRST (20)	74	68	72	76	74	71	71	70	70	70	70
# of Sections	4	4	4	4	4	4	4	4	4	4	4
Avg Section Size	18.5	17.0	18.0	19.0	18.5	17.8	17.8	17.5	17.5	17.5	17.5
SECOND (20)	69	75	69	73	77	75	72	72	71	71	71
# of Sections	4	4	4	4	4	4	4	4	4	4	4
Avg Section Size	17.3	18.8	17.3	18.3	19.3	18.8	18.0	18.0	17.8	17.8	17.8
THIRD (25)	86	69	75	69	73	77	75	72	72	71	71
# of Sections	4	3	3	3	3	4	3	3	3	3	3
Avg Section Size	21.5	23.0	25.0	23.0	24.3	19.3	25.0	24.0	24.0	23.7	23.7
FOURTH (25)	69	88	71	77	71	75	79	77	74	74	73
# of Sections	4	4	3	4	3	3	4	4	3	3	3
Avg Section Size	17.3	22.0	23.7	19.3	23.7	25.0	19.8	19.3	24.7	24.7	24.3
FIFTH (25)	81	70	89	72	78	72	76	80	78	75	75
# of Sections	4	3	4	3	4	3	4	4	4	3	3
Avg Section Size	20.3	23.3	22.3	24.0	19.5	24.0	19.0	20.0	19.5	25.0	25.0
SC SPED	in grade level counts										
# of Sections	2	2	2	2	2	2	2	2	2	2	2
Total Enrollment	446	441	451	440	443	440	442	440	434	430	428
Total Sections	26	24	24	24	24	24	25	25	24	23	23
Avg Section Size	18.6	20.3	20.8	20.3	20.5	20.4	19.5	19.3	20.1	21.0	20.9

Note: Graded SC SPED students are included in grade level counts. The actual average class sizes might be lower than shown.

Note: The boxed cells indicate the average section size is approaching the maximum class size for the grade level.

NORTH SALEM MIDDLE SCHOOL/HIGH SCHOOL
HISTORICAL ENROLLMENT

GRADE	Oct-14	Oct-15	Oct-16	Oct-17	Oct-18	Oct-19	Oct-20	Oct-21	Oct-22	Oct-23	Oct-24
SIXTH	94	96	89	97	57	92	78	74	79	61	71
SEVENTH	112	91	96	91	96	59	88	76	71	81	63
EIGHTH	102	110	94	97	96	97	63	87	73	73	78
UNGRADED	0	0	0	0	0	0	0	3	3	0	0
TOTAL 6 - 8	308	297	279	285	249	248	229	240	226	215	212
% CHANGE		-3.6%	-6.1%	2.2%	-12.6%	-0.4%	-7.7%	4.8%	-5.8%	-4.9%	-1.4%
NINTH	89	97	106	90	92	94	91	62	82	72	71
TENTH	82	92	96	112	85	91	93	89	55	81	73
ELEVENTH	96	86	95	96	110	83	90	90	89	60	75
TWELFTH	100	95	84	92	93	104	83	95	89	89	63
UNGRADED	0	0	0	0	0	0	3	1	1	0	0
TOTAL 9 - 12	367	370	381	390	380	372	360	337	316	302	282
% CHANGE		0.8%	3.0%	2.4%	-2.6%	-2.1%	-3.2%	-6.4%	-6.2%	-4.4%	-6.6%
TOTAL 6 - 12	675	667	660	675	629	620	589	577	542	517	494
% CHANGE		-1.2%	-1.0%	2.3%	-6.8%	-1.4%	-5.0%	-2.0%	-6.1%	-4.6%	-4.4%

note: data for all years provided by the district

MIGRATION	14 - 15	15 - 16	16 - 17	17 - 18	18 - 19	19 - 20	20 - 21	21 - 22	22 - 23	23 - 24	AVERAGE
6 - 7	96.8%	100.0%	102.2%	99.0%	103.5%	95.7%	97.4%	95.9%	102.5%	103.3%	99.8%
7 - 8	98.2%	103.3%	101.0%	105.5%	101.0%	106.8%	98.9%	96.1%	102.8%	96.3%	100.2%
8 - 9	95.1%	96.4%	95.7%	94.8%	97.9%	93.8%	98.4%	94.3%	98.6%	97.3%	97.1%
9 - 10	103.4%	99.0%	105.7%	94.4%	98.9%	98.9%	97.8%	88.7%	98.8%	101.4%	99.2%
10 - 11	104.9%	103.3%	100.0%	98.2%	97.6%	98.9%	96.8%	100.0%	109.1%	92.6%	98.6%
11 - 12	99.0%	97.7%	96.8%	96.9%	94.5%	100.0%	105.6%	98.9%	100.0%	105.0%	101.3%

=====

NORTH SALEM MIDDLE SCHOOL/HIGH SCHOOL
PROJECTED ENROLLMENT

=====

GRADE	Oct-24	Oct-25	Oct-26	Oct-27	Oct-28	Oct-29	Oct-30	Oct-31	Oct-32	Oct-33	Oct-34
	Actual										
SIXTH	71	82	70	90	73	79	73	77	81	79	76
SEVENTH	63	71	82	70	90	73	79	73	77	81	79
EIGHTH	78	63	71	82	70	90	73	79	73	77	81
TOTAL 6 - 8	212	216	223	242	233	242	225	229	231	237	236
% CHANGE		1.9%	3.2%	8.5%	-3.7%	3.9%	-7.0%	1.8%	0.9%	2.6%	-0.4%
NINTH	71	76	61	69	80	68	87	71	77	71	75
TENTH	73	70	75	61	68	79	67	86	70	76	70
ELEVENTH	75	72	69	74	60	67	78	66	85	69	75
TWELFTH	63	76	73	70	75	61	68	79	67	86	70
TOTAL 9 - 12	282	294	278	274	283	275	300	302	299	302	290
% CHANGE		4.3%	-5.4%	-1.4%	3.3%	-2.8%	9.1%	0.7%	-1.0%	1.0%	-4.0%
TOTAL 6 - 12	494	510	501	516	516	517	525	531	530	539	526
% CHANGE		3.2%	-1.8%	3.0%	0.0%	0.2%	1.5%	1.1%	-0.2%	1.7%	-2.4%

=====

NORTH SALEM MIDDLE SCHOOL/HIGH SCHOOL
SECTIONAL ANALYSIS FOR REGULAR INSTRUCTION OF GRADES 6 - 12

based on maximum class sizes of 26 for grades 6 - 12

GRADE	Oct-24	Oct-25	Oct-26	Oct-27	Oct-28	Oct-29	Oct-30	Oct-31	Oct-32	Oct-33	Oct-34
Sixth - Eighth (26)		216	223	242	233	242	225	229	231	237	236
# of Core Rooms		9	9	10	9	10	9	9	9	10	10
Avg Section Size		24.0	24.8	24.2	25.9	24.2	25.0	25.4	25.7	23.7	23.6
Core Rooms = ELA, Math, Science, Social Studies, Language, Health, Computer, Special Ed											
Ninth - Twelfth (26)		294	278	274	283	275	300	302	299	302	290
# of Core Rooms		12	11	11	11	11	12	12	12	12	12
Avg Section Size		24.5	25.3	24.9	25.7	25.0	25.0	25.2	24.9	25.2	24.2
Core Rooms = ELA, Math, Science, Social Studies, Language, Health, Computer, Special Ed											
Total 6 - 12 Enrollment		510	501	516	516	517	525	531	530	539	526
Total 6 - 12 Core Rooms		21	20	21	20	21	21	21	21	22	22
Avg Section Size		24.3	25.0	24.6	25.8	24.6	25.0	25.3	25.3	24.4	23.9

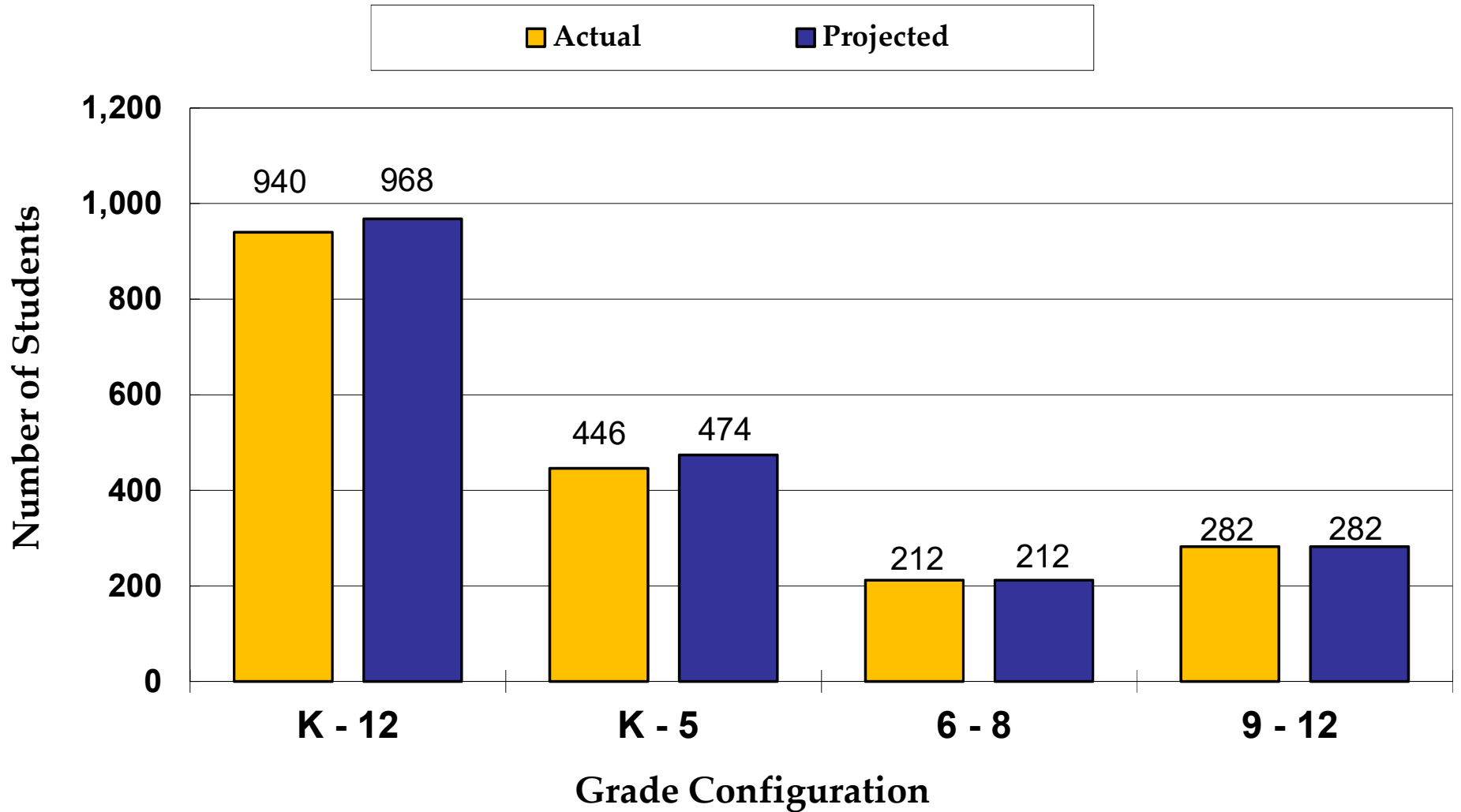
Note: The boxed cells indicate the average section size is approaching the maximum class size for the grade level.

Appendix B

North Salem Central School District

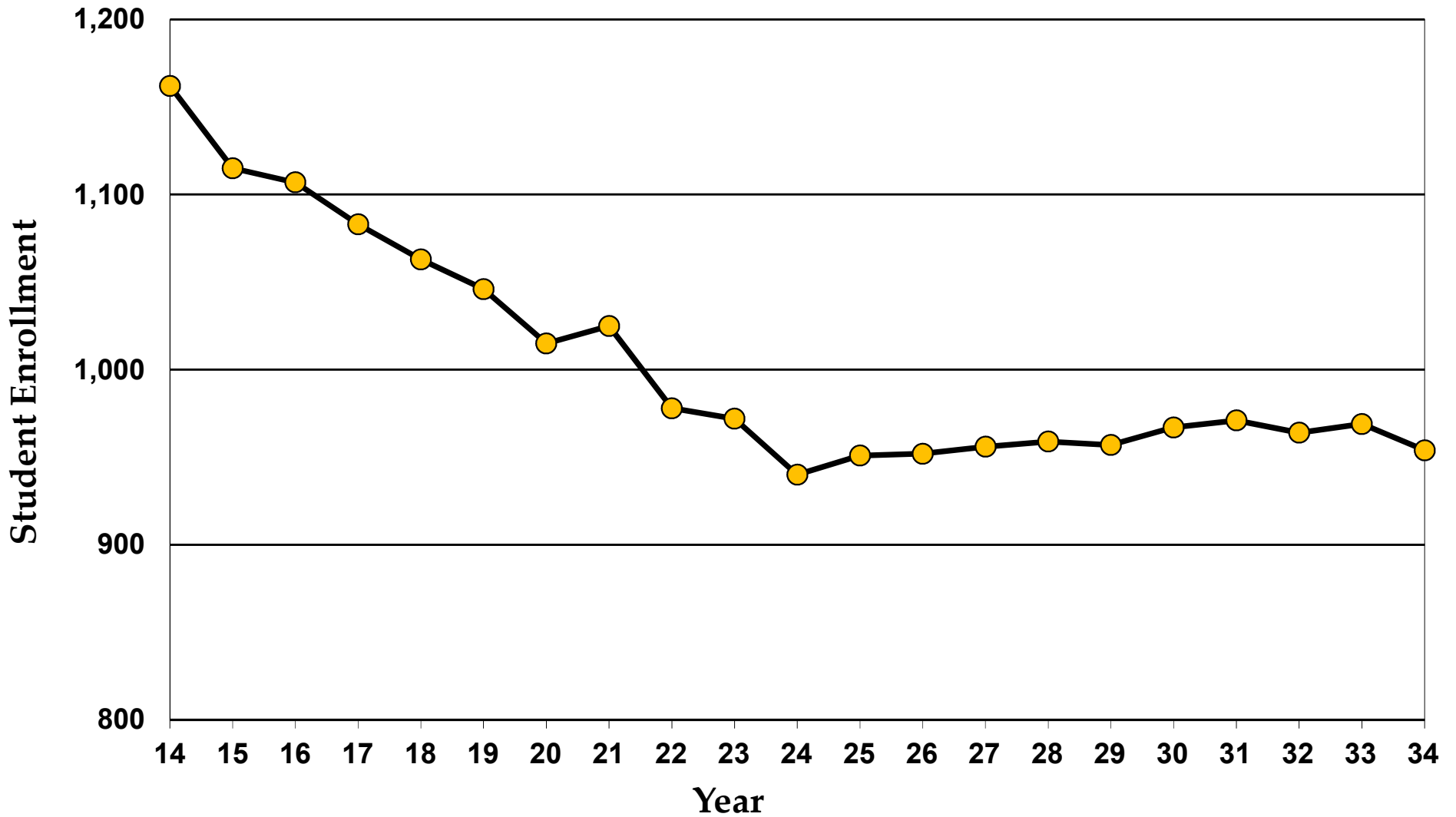
Accuracy of 2023-24 Western Suffolk BOCES Projections for 2024-25

2024-25 Enrollment



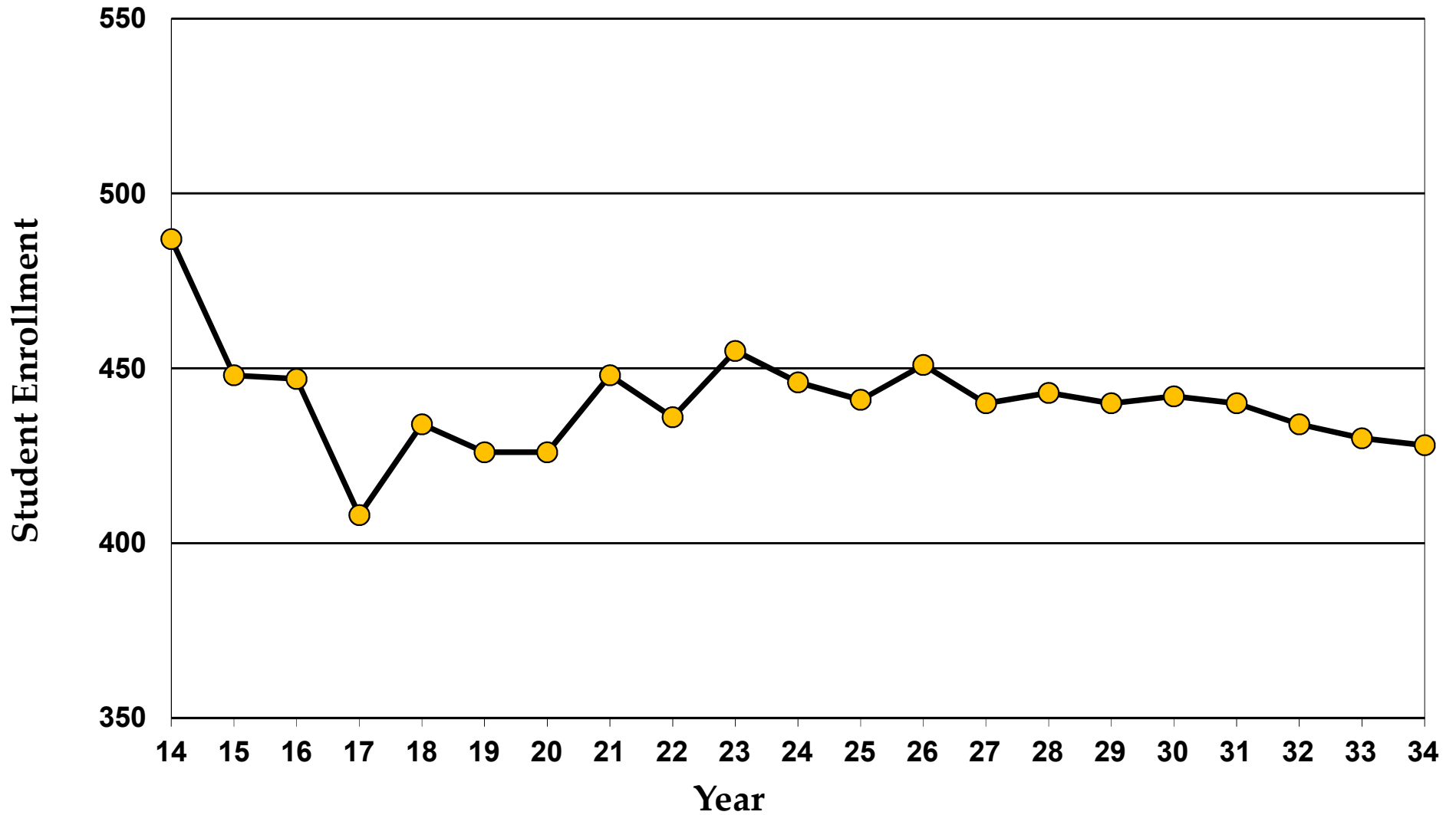
North Salem Central School District

Enrollment: Grades K - 12



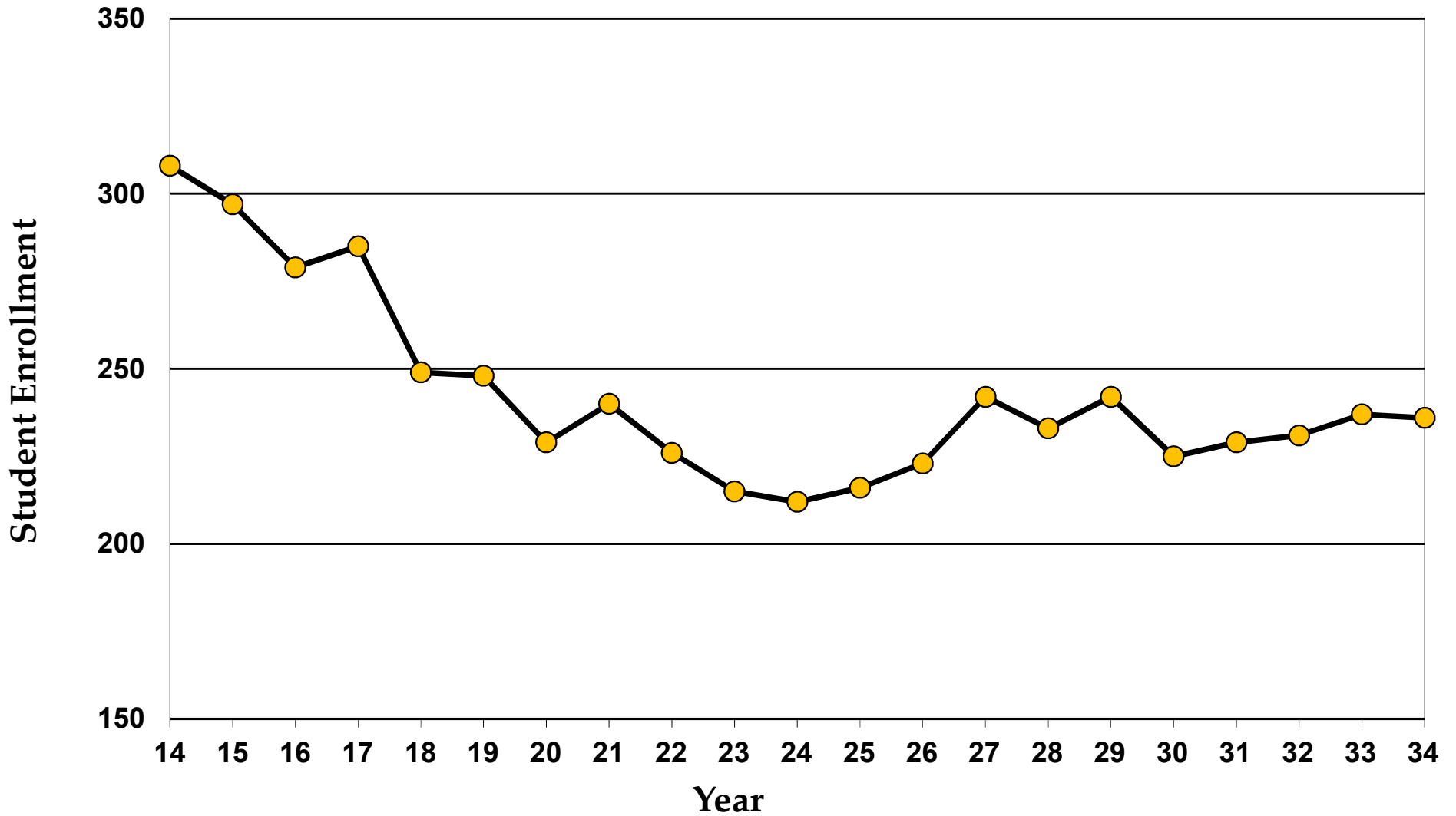
North Salem Central School District

Enrollment: Grades K - 5



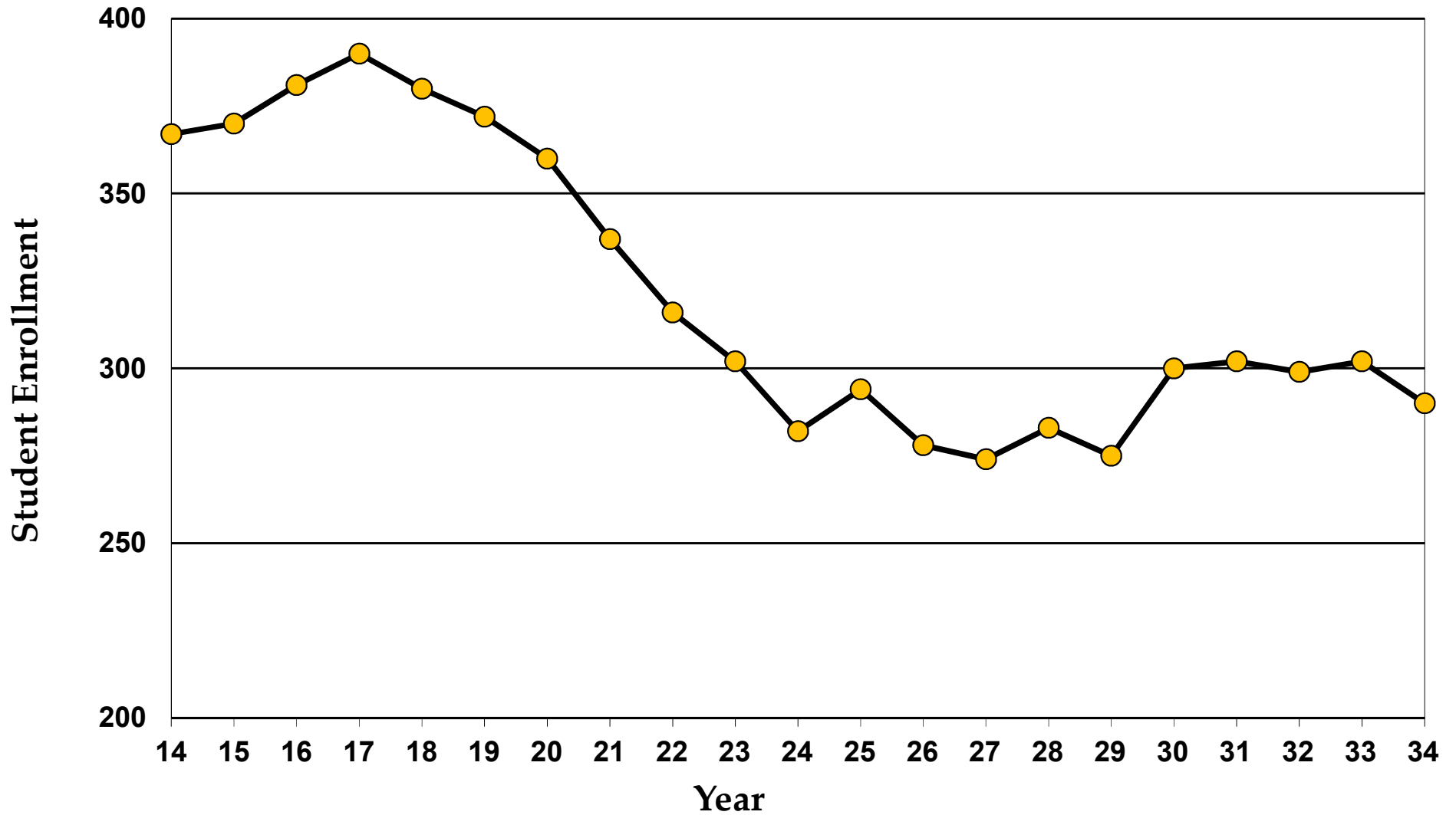
North Salem Central School District

Enrollment: Grades 6 - 8

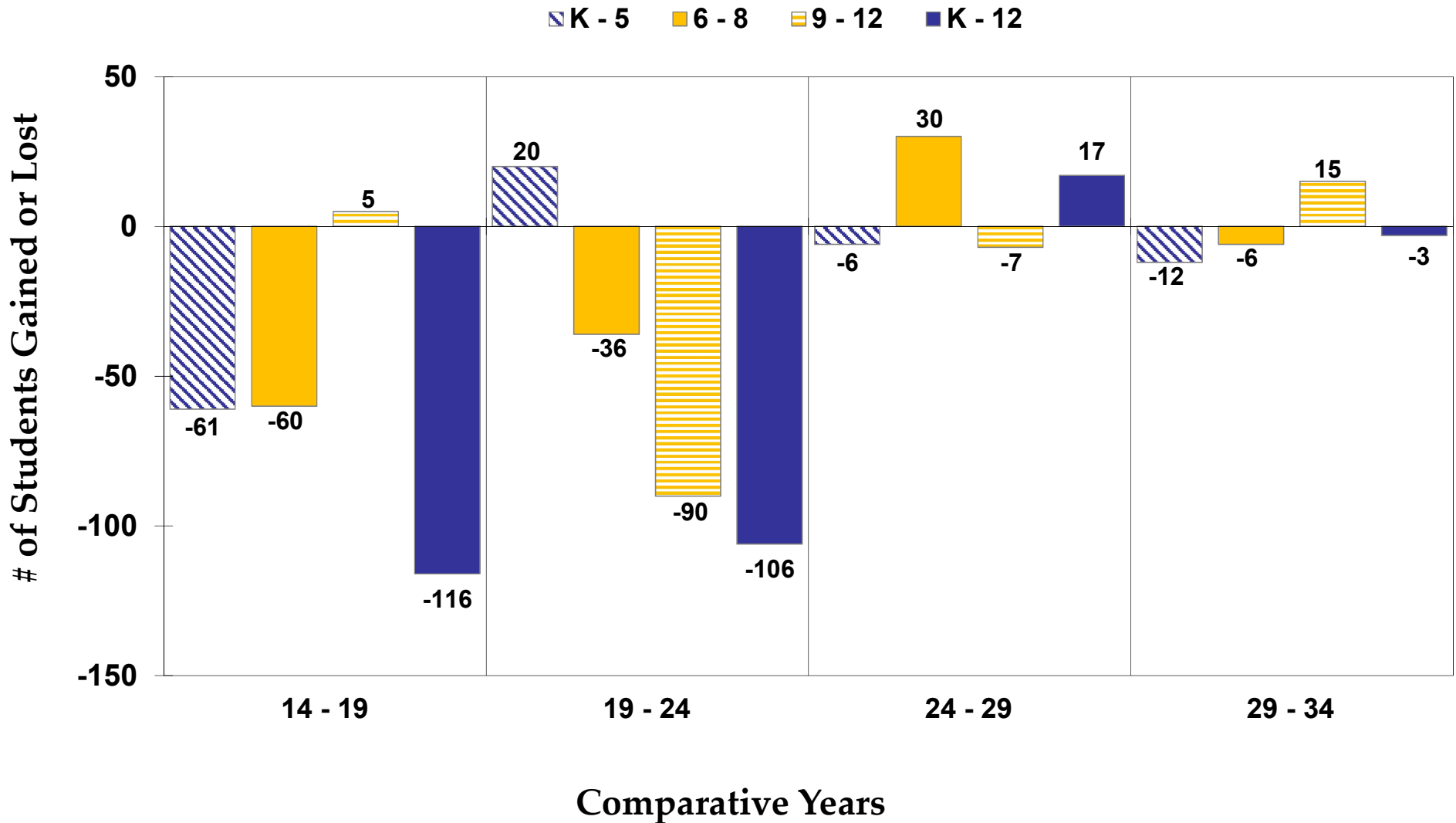


North Salem Central School District

Enrollment: Grades 9 - 12



North Salem Central School District Enrollment Change 2014 - 2034



Board of Education

Mr. Brian J. Sales, President
Ms. Mary Ellen Cunningham, Vice President
Ms. Debbie Adams-Kaden
Ms. Ilene Herz, Esq.
Ms. Jeanette Santos
Mr. Robert Scheid
Mr. Peter Wunsch
Ms. Joanne Klein, District Clerk

Mr. Michael Flynn
Chief Operating Officer
Ms. April E. Poprilo
District Superintendent





Division of Instructional Support Services

Office of School Planning & Research
31 Lee Avenue
Wheatley Heights, NY 11798
631-595-6802