

Rise STEM Academy For Girls



Week Ending February 14, 2025



Rise STEM Academy For Girls

➤ **Work Completed:**

- Continued excavation and site work.
- ICF walls for storm shelter started.
- Continuing with ICF work in other areas.
- Continuing with masonry work.
- Electrical rough-in started.
- Continuing with electrical and plumbing work.
- Start geothermal drilling.

➤ **Upcoming Work / Look Ahead:**

- Continue site utilities work toward Mason Headley.
- Continue site storm work around the parking lot.
- Continue works for the storm shelter
- Continue ICF work.
- Continue masonry work.
- Continue geothermal drilling.
- Continue electrical and plumbing work.

Rise STEM Academy For Girls

Storm Shelter Walls Installation in Progress



Rise STEM Academy For Girls

Installation of ICF Forms in Progress



Rise STEM Academy For Girls

CMU Work in Progress



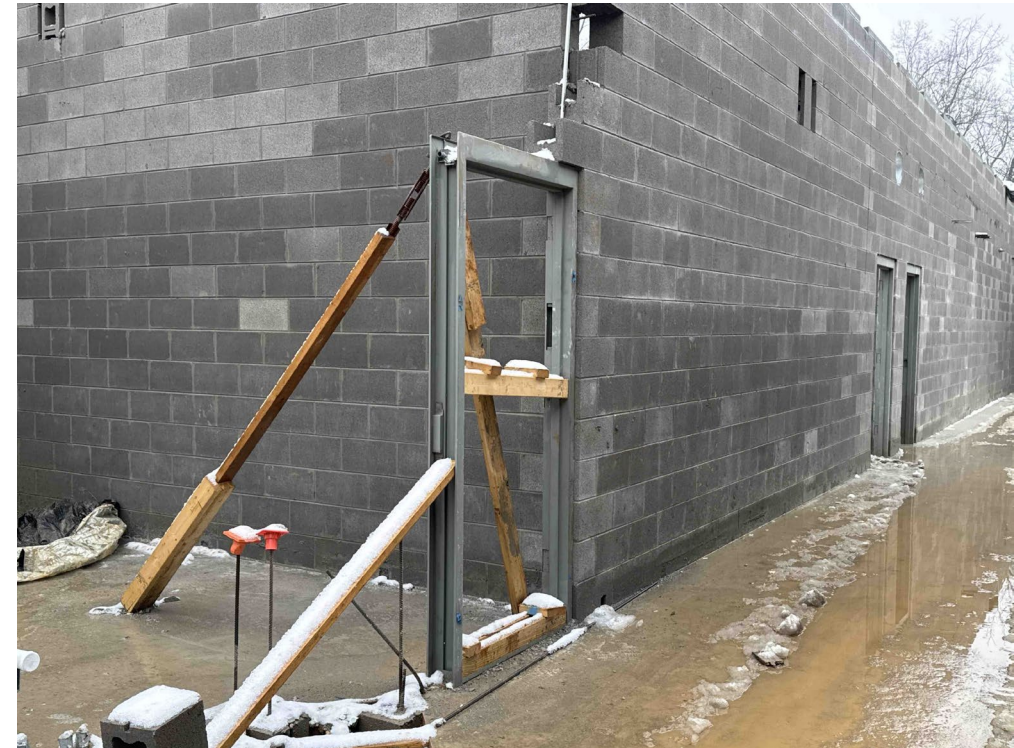
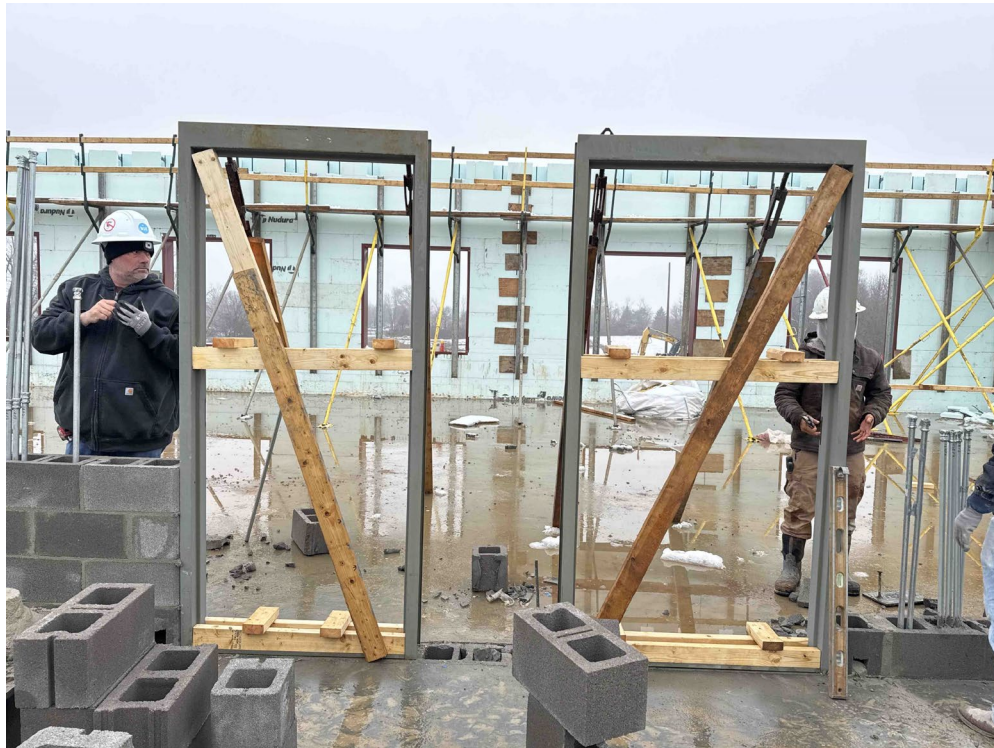
Rise STEM Academy For Girls

CMU Work in Progress



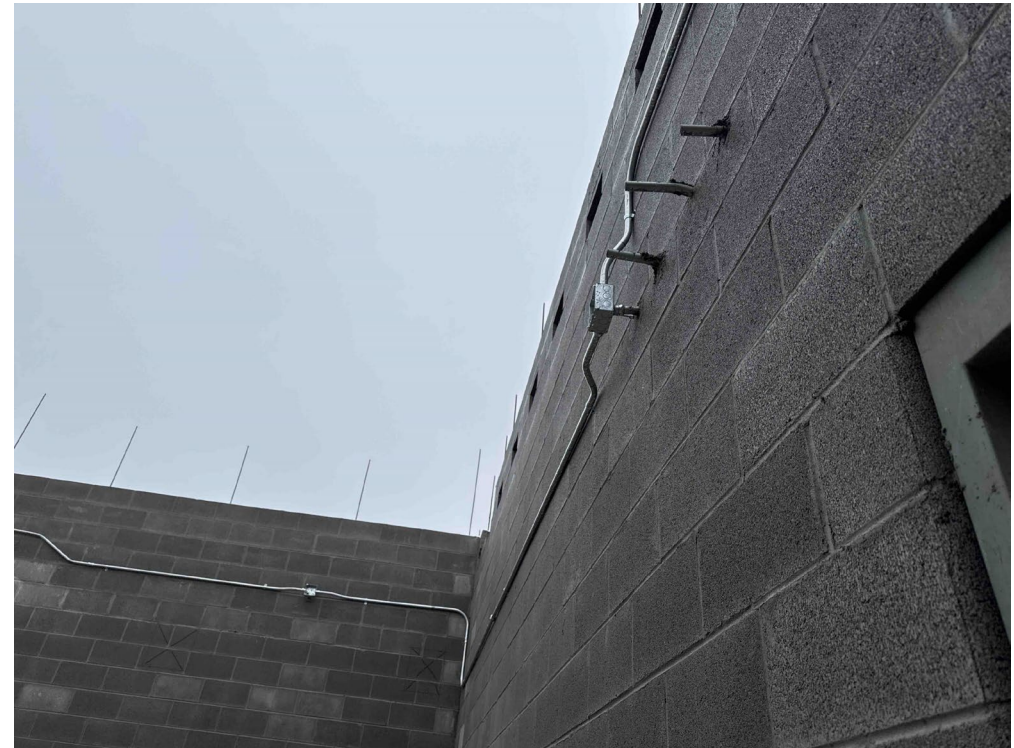
Rise STEM Academy For Girls

Door Frames Installation in Progress



Rise STEM Academy For Girls

Electrical Rough-In in Progress



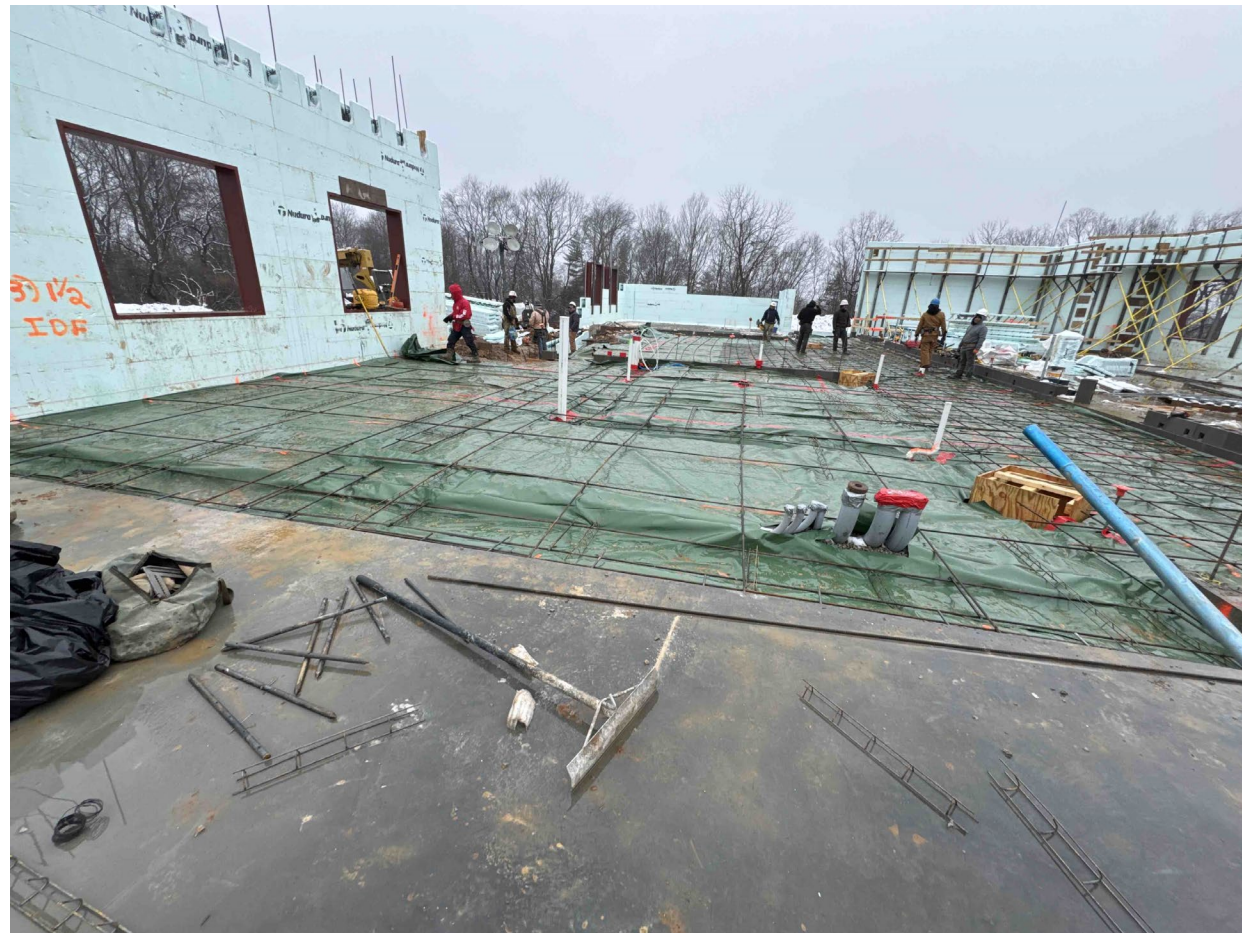
Rise STEM Academy For Girls

Electrical Rough-In in Progress



Rise STEM Academy For Girls

Concrete Slab Work in Progress



Week Ending February 14, 2025