

Building Capacity | Sustaining Success

Operations Board Report

February 11, 2025

Orangeburg-Wilkinson High School

SAFETY

Incidents to Date	#0
First Aids to Date	#0

WEATHER

Working Days	#177
Weather Days	#35
Activities Delayed	#2

MANPOWER

Number of Trades	#6
Average Workers	#114

SCHEDULE MILESTONES

Top Activities This Week

- Due to cold weather and snow, Monday and Friday were the only days on which work occurred.
- The segmented retaining wall at the visitor bleachers continues.
- Electrical, HVAC and plumbing in-wall rough-in continues with masonry.
- Curb and gutter continues at the front parking lot.
- Installation of the box culverts at the rear entrance occurred.
- Masonry work in areas B, C, E1 & E2 continues.
- Area D was backfilled in preparation for pouring the SOG.

Upcoming Activities

- Masonry work will continue.
- Underground MEP rough-in will begin at the field house.
- Pouring of SOG in area D and footings in the field house.



Orangeburg-Wilkinson High School

SAFETY

Incidents to Date #0

First Aids to Date #0

WEATHER

Working Days #177

Weather Days #36

Activities Delayed #2

MANPOWER

Number of Trades #6

Average Workers #121

SCHEDULE MILESTONES

Top Activities This Week

- Area D SOG was poured
- The segmented retaining wall at the visitor bleachers is complete.
- Electrical, HVAC and plumbing in-wall rough-in continues with masonry.
- Curb and gutter continues at the front parking lot. The area is being prepped for rock.
- Installation of the box culverts at the rear entrance occurred.
- Masonry work continues in areas E1, E2, C and A2.

Upcoming Activities

- Masonry work will continue.
- Underground MEP rough-in will begin at the field house.



Orangeburg-Wilkinson High School



East Lake Elementary School



727.520.8181
www.aerophoto.com

OCSD East Elementary School

Image # 36
Date 01.28.25

East Lake Elementary School



727.520.8181
www.aerophoto.com

OCSD East Elementary School

Image # 33
Date 01.28.25

East Lake Elementary School



727.520.8181
www.aerophoto.com

OCSD East Elementary School

Image # 38
Date 01.28.25

East Lake Elementary School





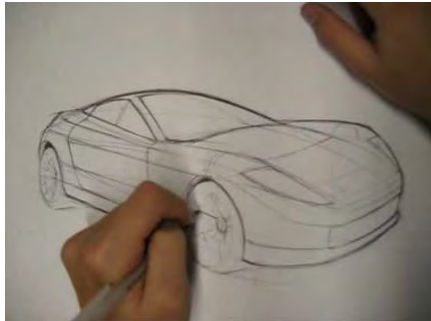
ORANGEBURG COUNTY SCHOOL DISTRICT

BOARD PRESENTATION

FEBRUARY 11, 2025



ROBERT E. HOWARD ES – DESIGN PROCESS



ROBERT E. HOWARD ELEMENTARY SCHOOL



Main Entry Perspective

ROBERT E. HOWARD ES - SITE UPDATE



LOCATED ON EXISTING Robert E. Howard MS SITE:
1255 BELLEVILLE RD. ORANGEBURG, SC 29115

- 1000 Students

1st Floor Area: +- 93,000 SF

2nd Floor Area: +- 27,000 SF

Total Area: +- 120,000 SF



Proposed Site Plan



Existing Site Plan

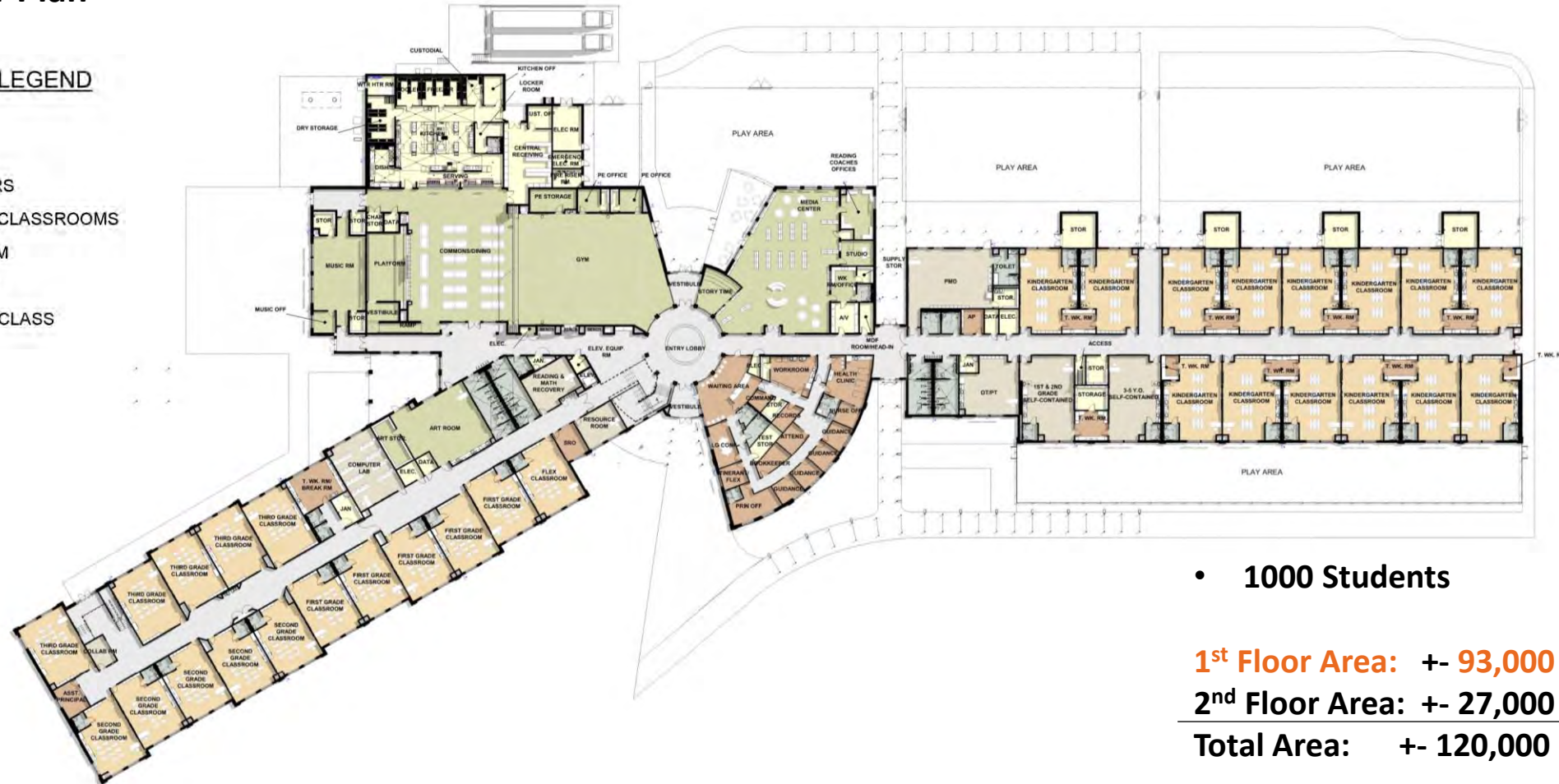
ROBERT E. HOWARD ELEMENTARY SCHOOL



1st Floor Plan

COLORED LEGEND

- ADMIN
- CORE
- CORRIDORS
- GENERAL CLASSROOMS
- RESTROOM
- SUPPORT
- SUPPORT CLASS



- 1000 Students

1st Floor Area: +- 93,000 SF

2nd Floor Area: +- 27,000 SF

Total Area: +- 120,000 SF

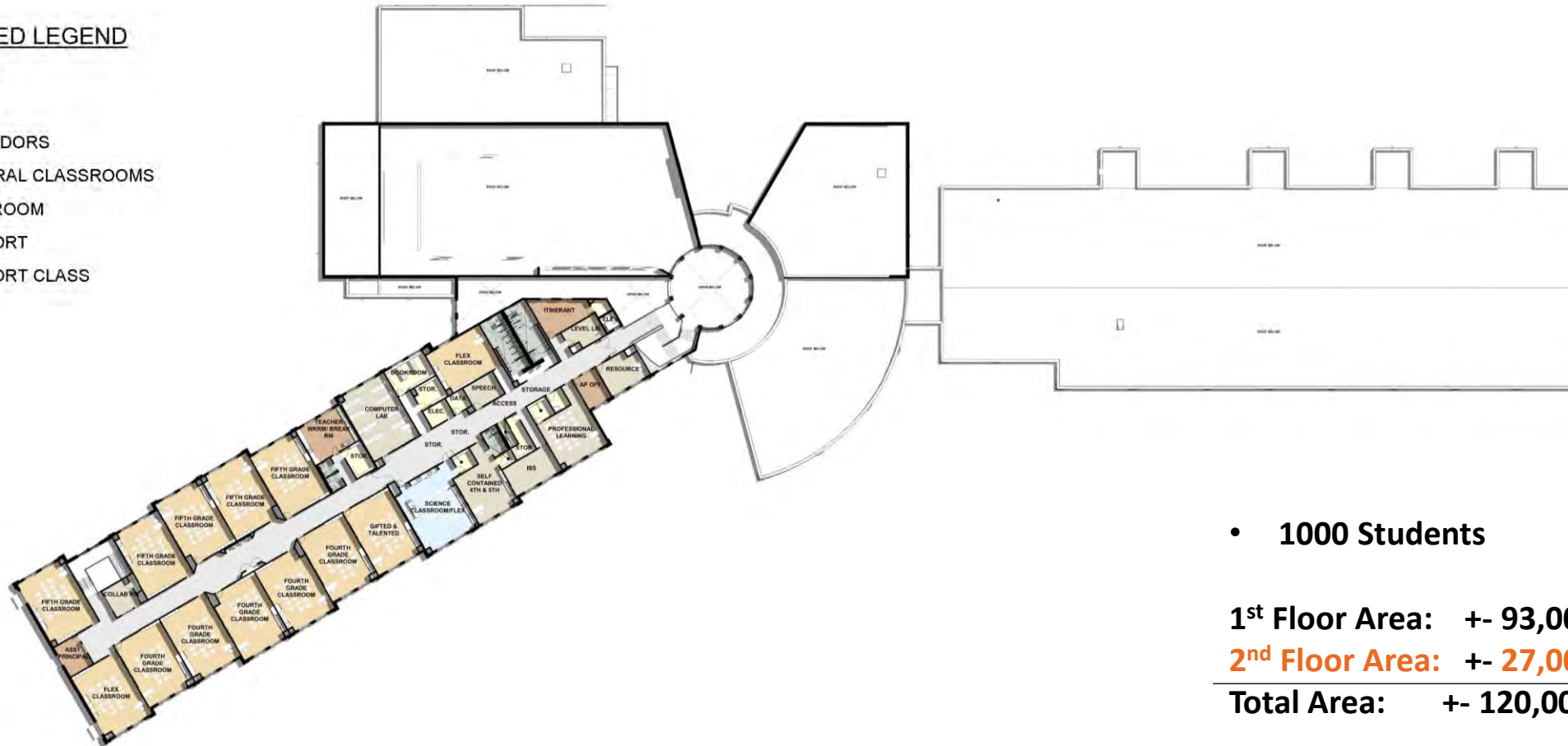
ROBERT E. HOWARD ELEMENTARY SCHOOL



2nd Floor Plan

COLORED LEGEND

	ADMIN
	CORE
	CORRIDORS
	GENERAL CLASSROOMS
	RESTROOM
	SUPPORT
	SUPPORT CLASS



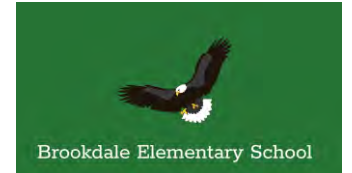
- 1000 Students

1st Floor Area: +- 93,000 SF

2nd Floor Area: +- 27,000 SF

Total Area: +- 120,000 SF

ROBERT E. HOWARD ELEMENTARY SCHOOL



**Wilkinson High School
Wolverines**

"STRIVE TO EXCEL,
NOT TO EQUAL."

Main Entry Rotunda Rendering

ORANGEBURG COUNTY SCHOOLS PROJECT UPDATES



ROBERT E. HOWARD ELEMENTARY SCHOOL



Reception Rendering

ORANGEBURG COUNTY SCHOOLS PROJECT UPDATES

ROBERT E. HOWARD ELEMENTARY SCHOOL



Dining/Performance Rendering

ORANGEBURG COUNTY SCHOOLS PROJECT UPDATES

ROBERT E. HOWARD ELEMENTARY SCHOOL



Physical Education / Multipurpose Rendering

ORANGEBURG COUNTY SCHOOLS PROJECT UPDATES

ROBERT E. HOWARD ELEMENTARY SCHOOL



Media Center Rendering

ORANGEBURG COUNTY SCHOOLS PROJECT UPDATES

ROBERT E. HOWARD ES – PROJECT SCHEDULE

