



24-25 HIGH SCHOOL PROFILE

For 63 years, students from around the globe have engaged in a rigorous, college-preparatory education at the American School of Brasilia (EAB) that embodies the school's Mission. Much more than solely an academic institution, the high school embodies the EAB Vision by providing a dynamic learning environment that offers myriad opportunities for students to become artists, leaders, public servants, athletes, and academics.

ABOUT EAB

- Established in 1961;
- Independent, non-profit day school;
- All graduates earn a U.S. High School Diploma;
- Brazilian graduates also earn the Brazilian High School Diploma;
- Twenty-two International Baccalaureate (IB) classes are offered;
- All students must complete at least four IB classes;
- 53% of the class of 2024 earned the full IB diploma.

ACCREDITATION



AFFILIATIONS



HIGH SCHOOL COUNSELORS

MICHAELLA BEATTY
HIGH SCHOOL/COLLEGE COUNSELOR
mbeatty@eabdf.br

KAREN HAFNER
HIGH SCHOOL/COLLEGE COUNSELOR
khafner@eabdf.br

CAMILLA ALVARENGA
HIGH SCHOOL SOCIAL-EMOTIONAL COUNSELOR
calvarenga@eabdf.br

ADMINISTRATION

CHARLIE SCHLEGEL
HEAD OF SCHOOL
cschlegel@eabdf.br

DAVID BAIR
HIGH SCHOOL PRINCIPAL
dbair@eabdf.br

MARIA SIEVE
DIRECTOR OF TEACHING AND LEARNING
msieve@eabdf.br

ISABEL MORAES
IB COORDINATOR
imoraes@eabdf.br

ACADEMIC GRADING

ACADEMIC GRADE	DESCRIPTOR	PERCENTAGE CONVERSION
7	Exceptional	96-100
6	Advanced Mastery	91-95
5	Proficient Mastery	84-90
4	Basic Mastery	73-83
3	Limited Mastery	65-72
2 (No credit)	Insufficient	55-64
1 (No credit)	No Learning	Below 55%



INTERNATIONAL BACCALAUREATE

ENGLISH

- English 9 & 10
- IBDP English B SL/HL
- IBDP English A Language and Literature SL/HL
- IBDP English A Literature SL/HL

MATHEMATICS

- Integrated 1/2
- Integrated 3
- Foundations of Math
- IBDP Analysis & Approaches SL/HL
- IBDP Application & Interpretation SL/HL

SOCIAL STUDIES

- Brazilian Social Studies **
- Introduction to Economics
- Modern World History 9& 10
- Philosophy and Sociology **
- IBDP Business Management SL/HL
- IBDP Brazilian Social Studies SL
- IBDP Economics SL/HL
- IBDP Environmental Systems

& Societies SL

- IBDP History SL/HL
- IBDP Psychology SL/HL
- IBDP Global Politics SL/HL

SCIENCE

- Integrated Science 9 & 10
- Earth Science
- Space Science
- IBDP Biology SL/HL
- IBDP Chemistry SL/HL
- IBDP Environmental Systems & Societies SL
- IBDP Physics SL/HL

WORLD LANGUAGES

- Portuguese Language Learners 1
- Portuguese Language Learners 2
- Portuguese Language Learners 3
- IBDP Portuguese B SL
- IBDP Portuguese A Language & Literature SL/HL
- IBDP School-Supported Self-

Taught Literature SL

- IBDP Spanish ab initio SL

PHYSICAL EDUCATION

- Physical Education 9-12

CREATIVE ARTS

- Art Themes *
- Choir *
- Concert Band *
- Digital Music
- Film Studies
- Personal Exploration Project *
- Theater *
- IBDP Film SL/HL
- IBDP Theatre SL/HL
- IBDP Visual Arts SL/HL

TECHNOLOGY

- Digital Media Production *
- Design *
- Robotics *

THEORY OF KNOWLEDGE

- IBDP TOK

ADDITIONAL INFORMATION:

EAB does not rank students, weight grades, or report GPA. Special requests for GPA should be made to the HS counselor. Mid-year grades will be available in late January.

Want to schedule a visit? Email our High School & College Counselor, Ms. Karen Hafner, at khafner@eabdf.br

STUDENT BODY

675 students (K3-12)

231 students in HS

CLASS OF 2024 IB RESULTS

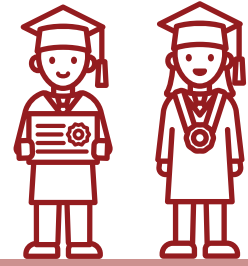
33 IB Diploma Candidates

31 IB Diploma Awarded

42 EAB Highest Diploma Score

31 EAB Average Score

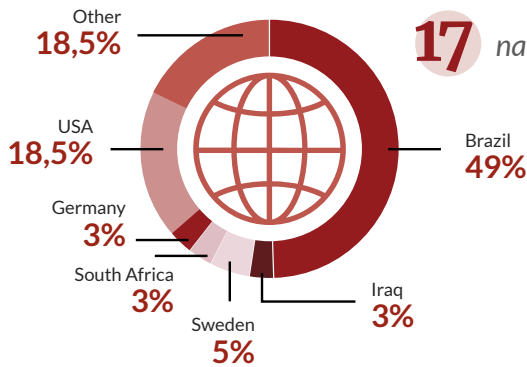
30 World Average Diploma Score



CLASS OF 2025

61 students

17 nationalities



SAT SUMMARY

MATH	EVIDENCE BASED READING AND WRITING	COMBINED
629	629	1259

HIGH SCHOOL FACULTY

44% American **41%** Brazilian **7%** Canadian **2%** British

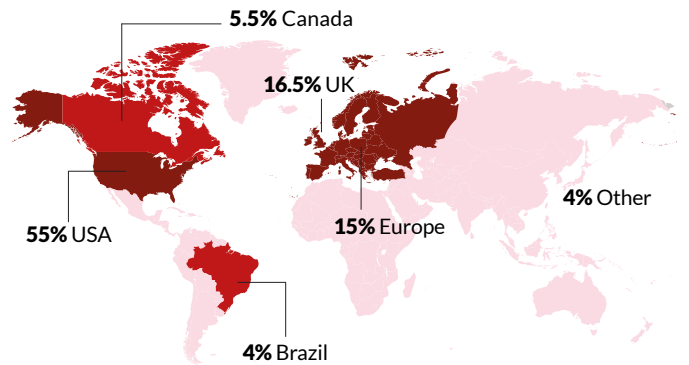
5% Other

61%

of the 41 Upper School Teachers hold a Master's degree or higher

CLASS OF 2024 -

ACCEPTANCES BY COUNTRY



COLLEGE/UNIVERSITY MATRICULATION

CLASSES OF 2022, 2023 AND 2024

- AMERICAN UNIVERSITY, USA
- ANNE ARUNDEL COMMUNITY COLLEGE, USA
- BARD COLLEGE, USA
- BINGHAMTON UNIVERSITY, USA
- BOND UNIVERSITY, AUSTRALIA
- BOSTON ARCHITECTURAL COLLEGE, USA
- BOSTON UNIVERSITY, USA
- BREDA UNIVERSITY OF APPLIED SCIENCES, NETHERLANDS
- BRIGHAM YOUNG UNIVERSITY, USA
- BROWN UNIVERSITY, USA
- CALIFORNIA STATE UNIVERSITY OF NORTHRIIDGE, USA
- CALVIN UNIVERSITY, USA
- CARLETON UNIVERSITY, USA
- CATÓLICA LISBON SCHOOL OF BUSINESS & ECONOMICS, PORTUGAL
- CEUB, BRAZIL
- COLLEGE OF WILLIAM & MARY, USA
- CONCORDIA UNIVERSITY, CANADA
- CRUZEIRO DO SUL, BRAZIL
- DARTMOUTH COLLEGE, USA
- DENVER UNIVERSITY, USA
- DEPAUW UNIVERSITY, USA
- DUKE UNIVERSITY, USA
- EHL HOSPITALITY BUSINESS SCHOOL, SWITZERLAND
- ELIZABETH TOWN COLLEGE, USA
- ERASMUS UNIVERSITY, NETHERLANDS
- ERASMUS UNIVERSITY COLLEGE, NETHERLANDS
- FAAP, BRAZIL

- FUVEST, BRAZIL
- GEORGE MASON UNIVERSITY, USA
- GEORGE WASHINGTON UNIVERSITY, USA
- HAN UNIVERSITY OF APPLIED SCIENCES, NETHERLANDS
- HULT INTERNATIONAL BUSINESS SCHOOL, USA
- HULT UNIVERSITY LONDON CAMPUS, UK
- IDP, BRAZIL
- IE UNIVERSITY, SPAIN
- INSPER, BRAZIL
- JAMES MADISON UNIVERSITY, USA
- KINGS COLLEGE LONDON, UK
- LIBERA UNIVERSITÀ DI LINGUE E COMUNICAZIONE, IULM, MILANO, ITALY
- LOYOLA MARYMOUNT UNIVERSITY, USA
- LOYOLA UNIVERSITY CHICAGO, USA
- LYNN UNIVERSITY, USA
- MARYLAND INSTITUTE COLLEGE OF ART - MICA, USA
- MARYMOUNT MANHATTAN COLLEGE, USA
- MIAMI DADE COLLEGE, USA
- MOUNT ALLISON UNIVERSITY, CANADA
- NEW YORK FILM ACADEMY
- NORTHEASTERN UNIVERSITY, USA
- PENN STATE UNIVERSITY, USA
- POLITECNICO DI TORINO, ITALY
- PRATT INSTITUTE, USA
- PURDUE UNIVERSITY, USA
- SAINT LOUIS UNIVERSITY AT MADRID, SPAIN
- SANTA BARBARA CITY COLLEGE, USA
- SANTA FE COLLEGE, USA
- SÃO LEOPOLDO MANDIC, BRAZIL

- SAVANNAH COLLEGE OF ART DESIGN, USA
- SIMON FRASER UNIVERSITY, CANADA
- SPELMAN COLLEGE, USA
- ST. GEORGE'S UNIVERSITY, USA
- STIRLING UNIVERSITY, UK
- SUFFOLK UNIVERSITY, USA
- TEMPLE UNIVERSITY, USA
- TETR COLLEGE OF BUSINESS, DUBAI
- THE NEW SCHOOL, USA
- TULANE UNIVERSITY, USA
- UNICEPLAC, BRAZIL
- UNIVERSITY COLLEGE LONDON, UK
- UNIVERSITY COLLEGE UTRECHT, NETHERLANDS
- UNIVERSITY OF AMSTERDAM, NETHERLANDS
- UNIVERSITY OF BRITISH COLUMBIA, CANADA
- UNIVERSITY OF CALGARY, CANADA
- UNIVERSITY OF CALIFORNIA- DAVIS, USA

- UNIVERSITY OF COLORADO BOULDER, USA
- UNIVERSITY OF LEEDS, ENGLAND OR QUEEN MARY UNIVERSITY OF LONDON, ENGLAND
- UNIVERSITY OF LOUISIANA AT LAFAYETTE, USA
- UNIVERSITY OF MIAMI, USA
- UNIVERSITY OF MONTREAL, CANADA
- UNIVERSITY OF NEW SOUTH WALES, AUSTRALIA
- UNIVERSITY OF NOTRE DAME, USA
- UNIVERSITY OF SAPIENZA, ITALY
- UNIVERSITY OF TROMSØ
- UNIVERSITY OF WARWICK, UK
- UNIVERSITY OF WISCONSIN MADISON, USA
- UTRECHT UNIVERSITY, NETHERLANDS
- WAGENINGEN UNIVERSITY AND RESEARCH, NETHERLANDS
- WESTERN UNIVERSITY, IVEY BUSINESS SCHOOL

