

Board of Trustees



ENROLLMENT UPDATE

February 11, 2025

The purpose of this presentation is to:

- Inform the Board of Trustees of district and school enrollment projections for the next 5 years
- Provide required information to better understand enrollment projections and variances that occur in these projections
- Provide an update on District transfer programs and better understand their effect on the enrollment of District Schools



TERMS: SPECIAL ENROLLMENTS



Ungraded Secondary (US) enrollments are students receiving Special Education services beyond Grade 12.

Non Public School (NPS) are students attending specialized schools for students with special needs pursuant to an Individualized Education Program (IEP).

Community Day (CDS) students attend an Educational Options school located on the District Office Campus.

Though all of these are counted in District enrollment reported to the State and County, they are not always reported when providing Gr. 9-12 District or school enrollments.

TERMS: INTRA DISTRICT TRANSFERS



Intra District Transfers are when students transfer from one FUHSD school to another FUHSD school. Examples of these types of transfers are:

- The Lynbrook and Monta Vista Supplemental School Assignment Programs (LSSAP and MSSAP)
- Placement Advisory Committee (PAC) transfers
- Special Support Programs such as Special Education and English Language Development



TERMS: INTER DISTRICT TRANSFERS



Inter District Transfers are when students transfer into FUHSD from another District. Examples of these types of transfers are:

- Employee Privilege
- Senior Privilege
- Other special circumstances or appeals



TERMS: ATTENDING VS RESIDENT ENROLLMENT



Resident enrollment is based upon where students reside and the corresponding school for that area/attendance boundary.

Attending enrollment is based upon where the students actually attend school.

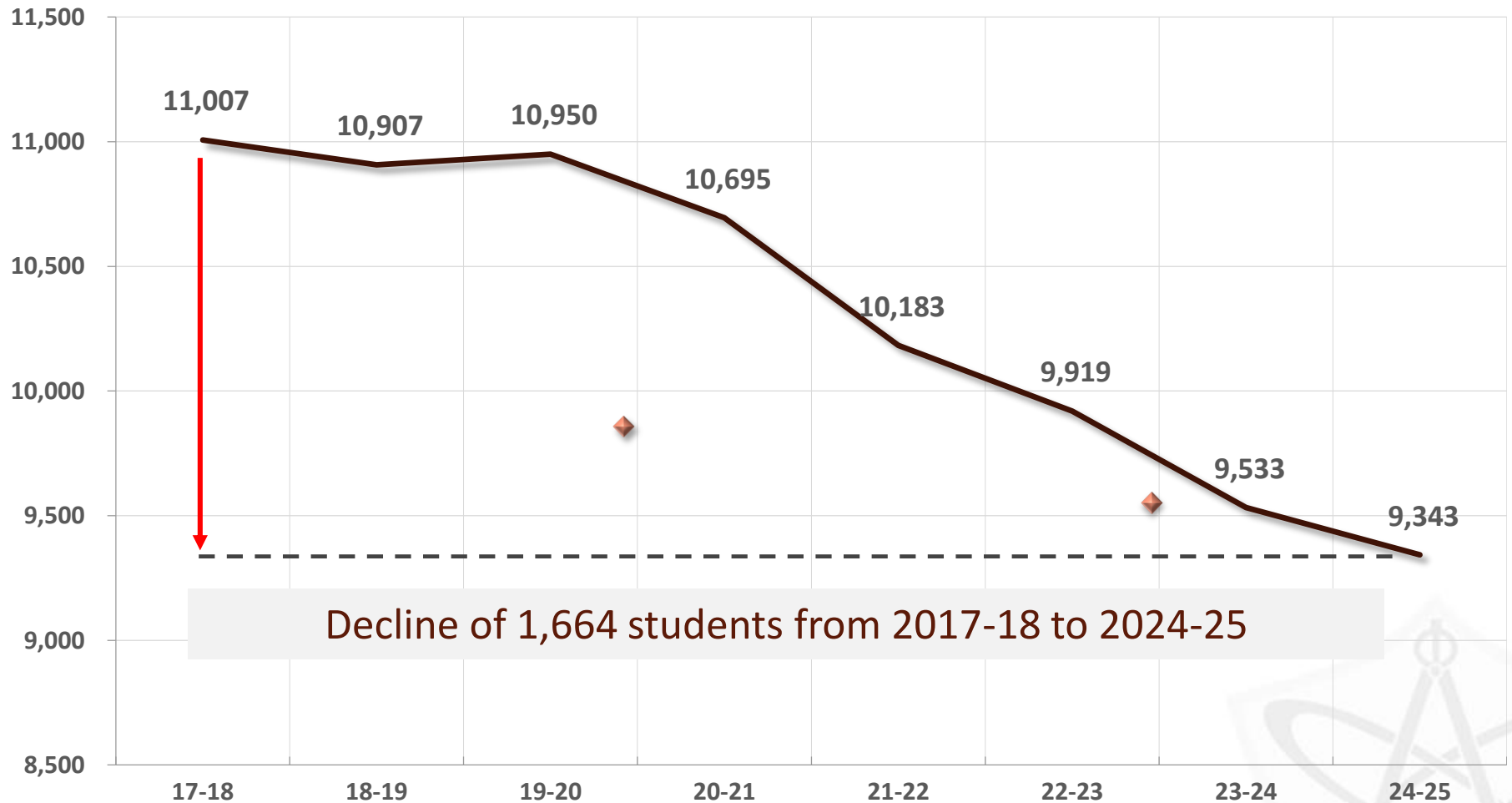
Attending enrollment differs from resident enrollment because of inter and intra district transfers.



HISTORY: DISTRICT ATTENDING ENROLLMENT



Grades 9-12 Attending Enrollment since 2017

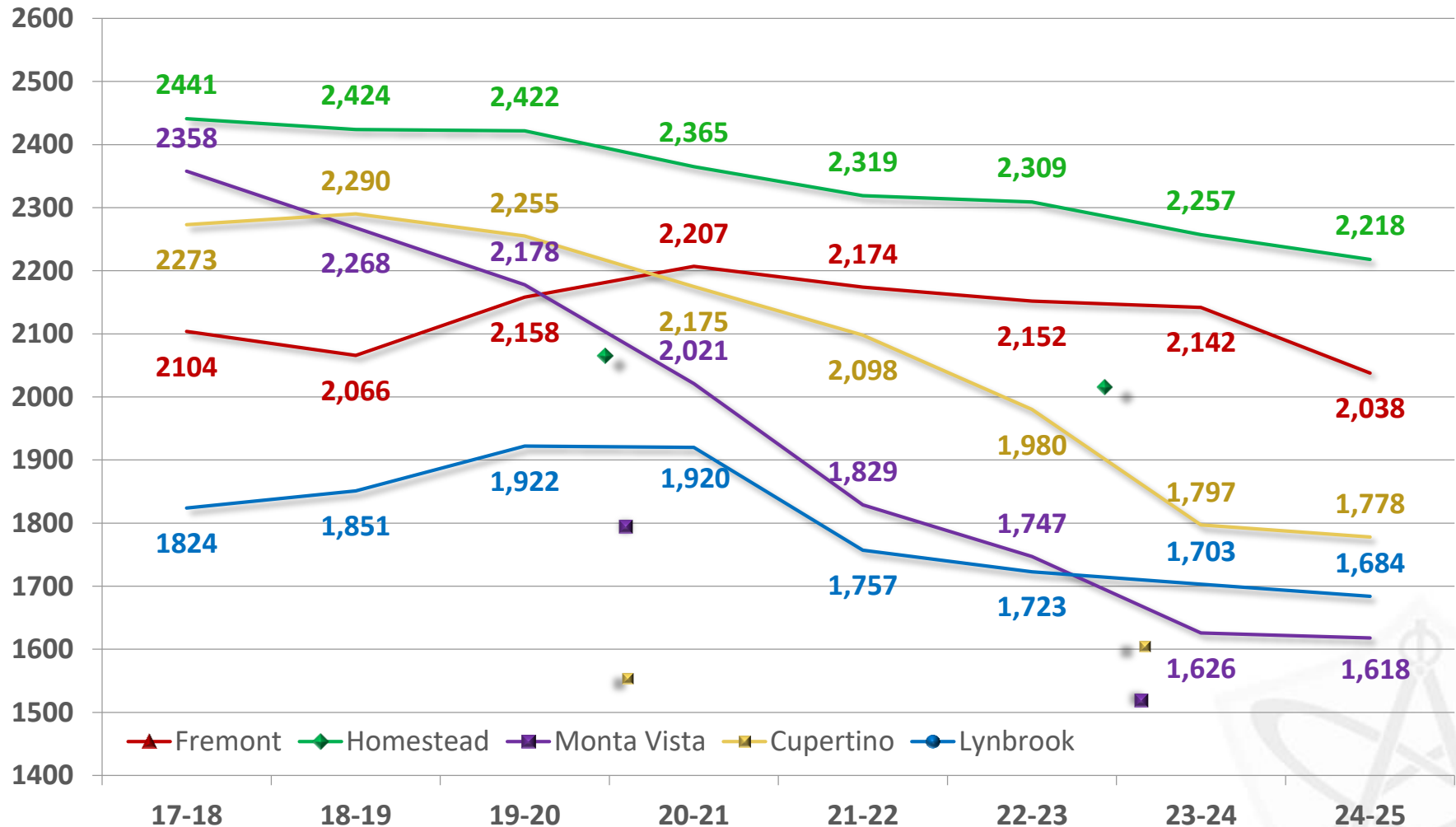


This data does not include Non Public School or Ungraded Secondary Students

HISTORY: SCHOOL ATTENDING ENROLLMENT



Grades 9-12 Attending Enrollment since 2017



This data does not include Non Public School, Ungraded Secondary or Community Day Students

ACTUAL ATTENDING ENROLLMENT 2024-25



SITE	ACTUAL 2024-25					1-YEAR CHANGE				
	9	10	11	12	TOT	9	10	11	12	TOT
FHS	474	493	518	553	2,038	-7	-2	-24	-71	-104
HHS	525	505	591	597	2,218	25	-80	10	6	-39
MHS	401	366	407	444	1,618	33	-41	-34	34	-8
CHS	452	373	467	486	1,778	84	-96	-12	5	-19
LHS	423	432	423	406	1,684	-19	11	15	-26	-19
CDS	1	3	1	2	7	1	1	-5	2	-1
TOT	2,276	2,172	2,407	2,488	9,343	117	-205	-46	-43	-190

Does not include NPS Students or Post Secondary Student

ENROLLMENT CHANGE - 2023-24 TO 2024-25



ATTENDING ENROLLMENT CHANGE: PROJECTED VS ACTUAL

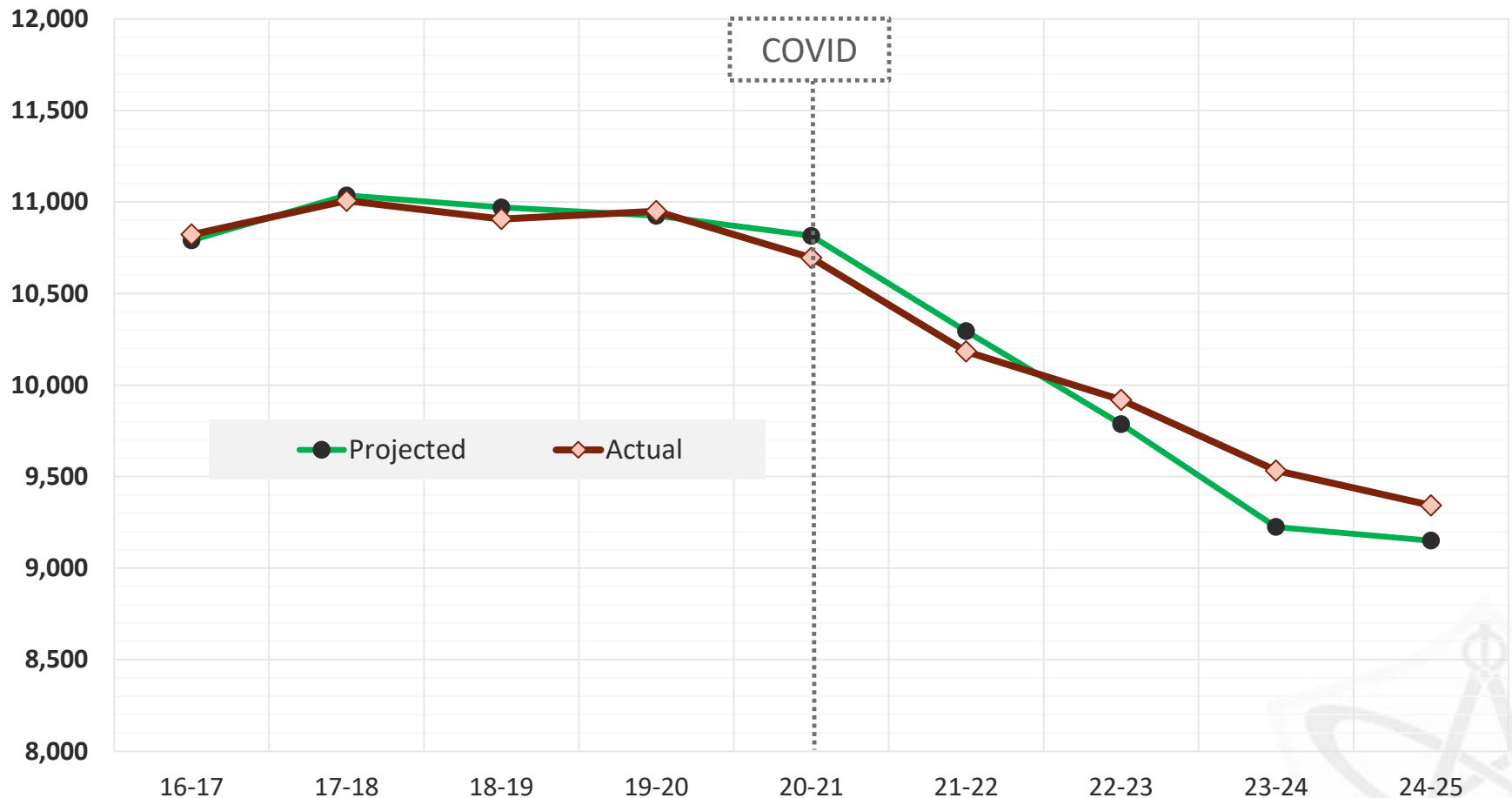
SITE	PROJECTED 1-YEAR CHANGE					ACTUAL 1-YEAR CHANGE					DIFFERENCE FROM PROJ.				
	9	10	11	12	TOT	9	10	11	12	TOT	9	10	11	12	TOT
FHS	-9	-16	-45	-73	-143	-7	-2	-24	-71	-104	2	14	21	2	39
HHS	-34	-90	-5	-7	-136	25	-80	10	6	-39	59	10	15	13	97
MHS	55	-42	-39	28	2	33	-41	-34	34	-8	-22	1	5	6	-10
CHS	46	-105	-18	-8	-85	84	-96	-12	5	-19	38	9	6	13	66
LHS	-28	19	12	-23	-20	-19	11	15	-26	-19	9	-8	3	-3	1
CDS	0	0	-2	1	-1	1	1	-5	2	-1	1	1	-3	1	0
TOT	30	-234	-97	-82	-383	117	-205	-46	-43	-190	87	27	47	32	193

Does not include NPS Students or Post Secondary Student

DISTRICT ATTENDING ENROLLMENT



Attending Enrollment: 1-Year Actual and Projected



This data does not include Non Public School or Ungraded Secondary Students

ENROLLMENT PROJECTION REPORT



Each year, the District receives enrollment projection data from Enrollment Projection Consultants (EPC). EPC has been providing neighborhood-specific forecast studies for FUHSD since 2005.

EPC specializes in in-depth studies, where each key component of the recent trends is determined, analyzed, compared to the knowledge gained from their experience in over 400 previous studies, and then projected.



ENROLLMENT PROJECTION REPORT



EPC has been accurate in its short term and long term projections for the District. The District relies on enrollment projections to inform our decisions on hiring, staffing, classroom needs, course offerings, budgets, construction and more. Therefore, having accurate and reliable projections is vital to our success.

Enrollment data provided by EPC focuses on **resident** enrollment. The District then uses that data and creates **attending** enrollment projections based on intra and inter district transfer trends and planned changes.

Enrollment Projection Consultants Annual Enrollment Forecast Report 2024-25

There was a huge shift in how the enrollment progressed into most of the sixth through eleventh grades in the last two years, compared to the trends in all prior years since 2016, with the result of a much smaller decline now being forecast for the Fremont Union High School District.

Of the twelve school districts that we are now analyzing and made forecasts for from a year ago, Sunnyvale SD is the only district that had a total enrollment increase from 2023 to 2024.

While a decline in the total is still projected because of smaller incoming classes for ninth grade than those graduating from twelfth grade, the degree of decline is by less than in our past reports.

RESIDENT PROJECTIONS - LONG TERM DATA



Homestead High School

K-12 Resident Enrollment In Attendance Area

Oct. of	Number of Students Residing in High School Region and Enrolled in SSD, CUSD and FUHSD*													
	K	1	2	3	4	5	6	7	8	9	10	11	12	K-12
2018	505	566	557	570	549	635	524	594	590	623	610	601	598	7,522
2019	521	522	545	541	548	503	558	533	572	615	627	600	594	7,279
2020	368	509	491	500	512	501	441	538	517	581	600	620	578	6,756
2021	386	367	470	436	455	462	449	419	521	556	567	583	611	6,282
2022	378	409	383	463	425	442	447	445	426	576	572	570	585	6,121
2023	407	400	406	393	457	418	433	450	456	497	579	579	581	6,056
2024	389	415	387	412	408	451	421	448	463	531	503	583	592	6,003

Since 2018, the total K-12 enrollment has decreased by **1,519** students (7,522 to 6,003)
This is a 20% decrease in 6 years.

Noticeable changes in the progression pattern from Gr. 8 to Gr. 9 the following year:

2019 to 2020 = +9, 2020 to 2021 = +39, 2021 to 2022 = +51,
2022 to 2023 = +71 and 2023 to 2024 = +75

Also an increase in progression pattern from Gr. 5 to Gr. 6 (Elem. To Middle School)

Source: Enrollment Projection Consultants Annual Enrollment Forecast Report 2024-2025

RESIDENT PROJECTIONS - LONG TERM DATA



Fremont High School

K-12 Resident Enrollment In Attendance Area

Oct. of	Number of Students Residing in High School Region and Enrolled in SSD, CUSD and FUHSD*														K-12
	K	1	2	3	4	5	6	7	8	9	10	11	12		
2018	779	836	826	740	684	721	619	634	573	520	570	514	495	8,511	
2019	808	725	812	771	689	641	630	593	610	566	533	586	512	8,476	
2020	715	744	676	755	716	638	549	577	569	585	554	515	579	8,172	
2021	639	683	662	598	650	609	489	493	517	527	590	541	533	7,531	
2022	601	619	659	634	576	614	514	463	475	466	525	600	565	7,311	
2023	545	622	624	649	625	562	576	523	495	488	505	543	624	7,381	
2024	553	544	618	612	652	602	517	570	512	483	494	535	549	7,241	

Since 2018, the total K-12 enrollment has decreased by **1,270** students (8,511 to 7,241)
This is a 15% decrease in 6 years.

Not only is FHS area seeing a change in progression pattern, but it is seeing an increase in enrollment in Gr. 4-8 since 2022. Ex. Gr. 4 in 2024 is 652 and in 2022 was 576.

Source: Enrollment Projection Consultants Annual Enrollment Forecast Report 2024-2025

RESIDENT ENROLLMENT PROJECTIONS 2025-26



1-YEAR RESIDENT PROJECTIONS

SCHOOL SITE	2024-25 ACTUAL	2025-26 PROJ.	1-YR CHANGE
FREMONT	2,061	2,070	9
HOMESTEAD	2,209	2,132	-77
MONTA VISTA	1,631	1,619	-12
CUPERTINO	1,944	1,885	-59
LYNBROOK	1,370	1,328	-42
DISTRICT	9,215	9,034	-181

RESIDENT ENROLLMENT PROJECTIONS 2029-30



5-YEAR RESIDENT PROJECTIONS

SCHOOL SITE	2024-25 ACTUAL	2029-30 PROJ.	5-YR CHANGE
FREMONT	2,061	2,357	296
HOMESTEAD	2,209	1,871	-338
MONTA VISTA	1,631	1,564	-67
CUPERTINO	1,944	1,765	-179
LYNBROOK	1,370	1,311	-59
DISTRICT	9,215	8,868	-347

ATTENDING ENROLLMENT PROJECTIONS 2025-26



1-YEAR ATTENDING PROJECTIONS

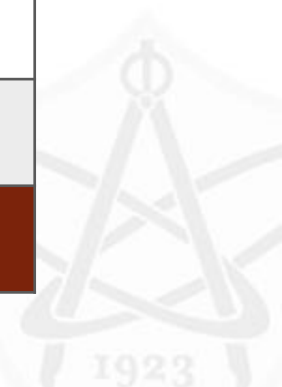
SCHOOL SITE	2024-25 ACTUAL	2025-26 PROJ.	1-YR CHANGE
FREMONT	2,038	2,042	4
HOMESTEAD	2,218	2,137	-81
MONTA VISTA	1,618	1,617	-1
CUPERTINO	1,778	1,732	-46
LYNBROOK	1,684	1,644	-40
Comm. Day	7	6	-1
DISTRICT	9,343	9,178	-165

ATTENDING ENROLLMENT PROJECTIONS 2029-30

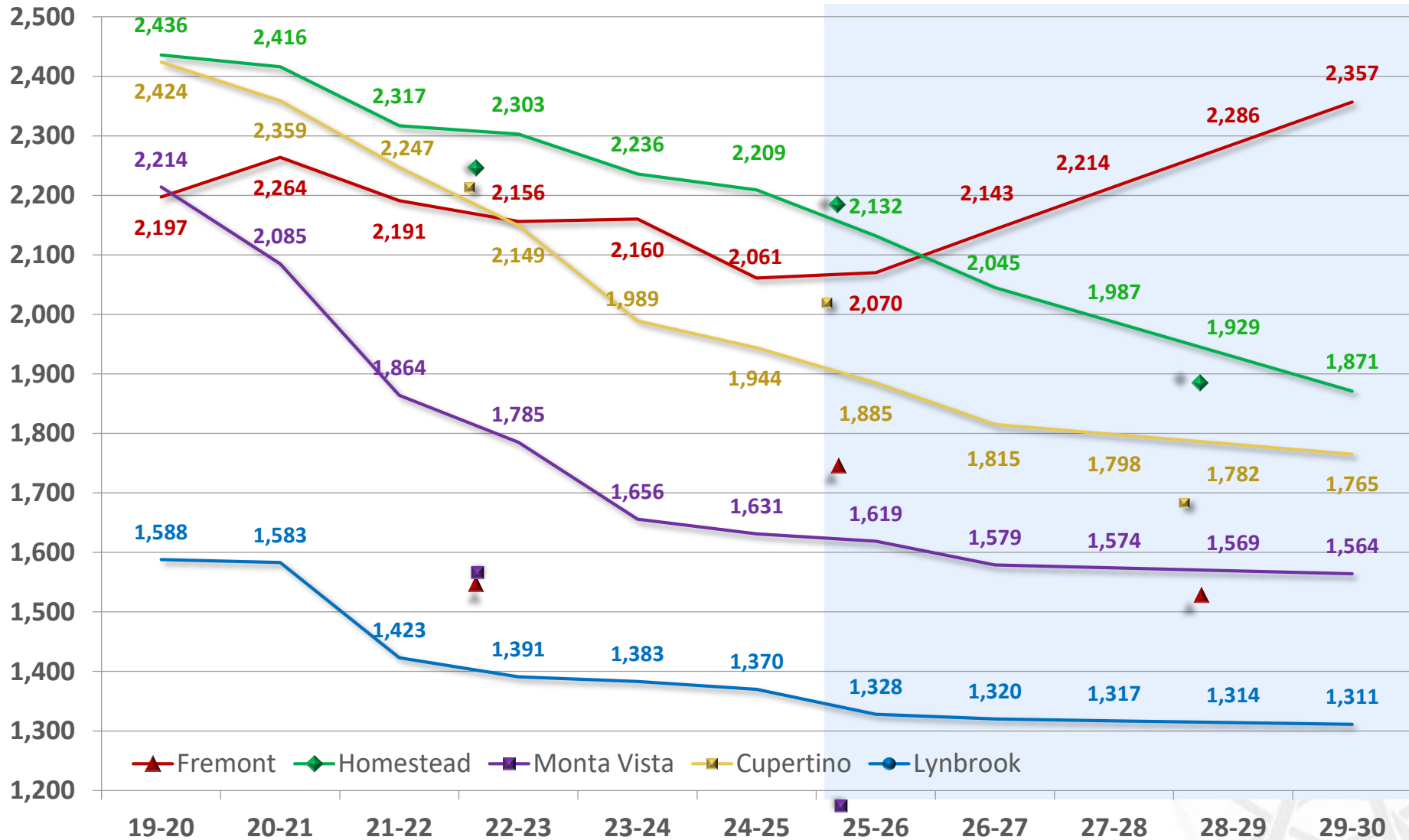


5-YEAR ATTENDING PROJECTIONS

SCHOOL SITE	2024-25 ACTUAL	2029-30 PROJ.	5-YR CHANGE
FREMONT	2,038	2,331	293
HOMESTEAD	2,218	1,867	-351
MONTA VISTA	1,618	1,586	-32
CUPERTINO	1,778	1,639	-139
LYNBROOK	1,684	1,602	-82
Comm. Day	7	7	0
DISTRICT	9,343	9,032	-311

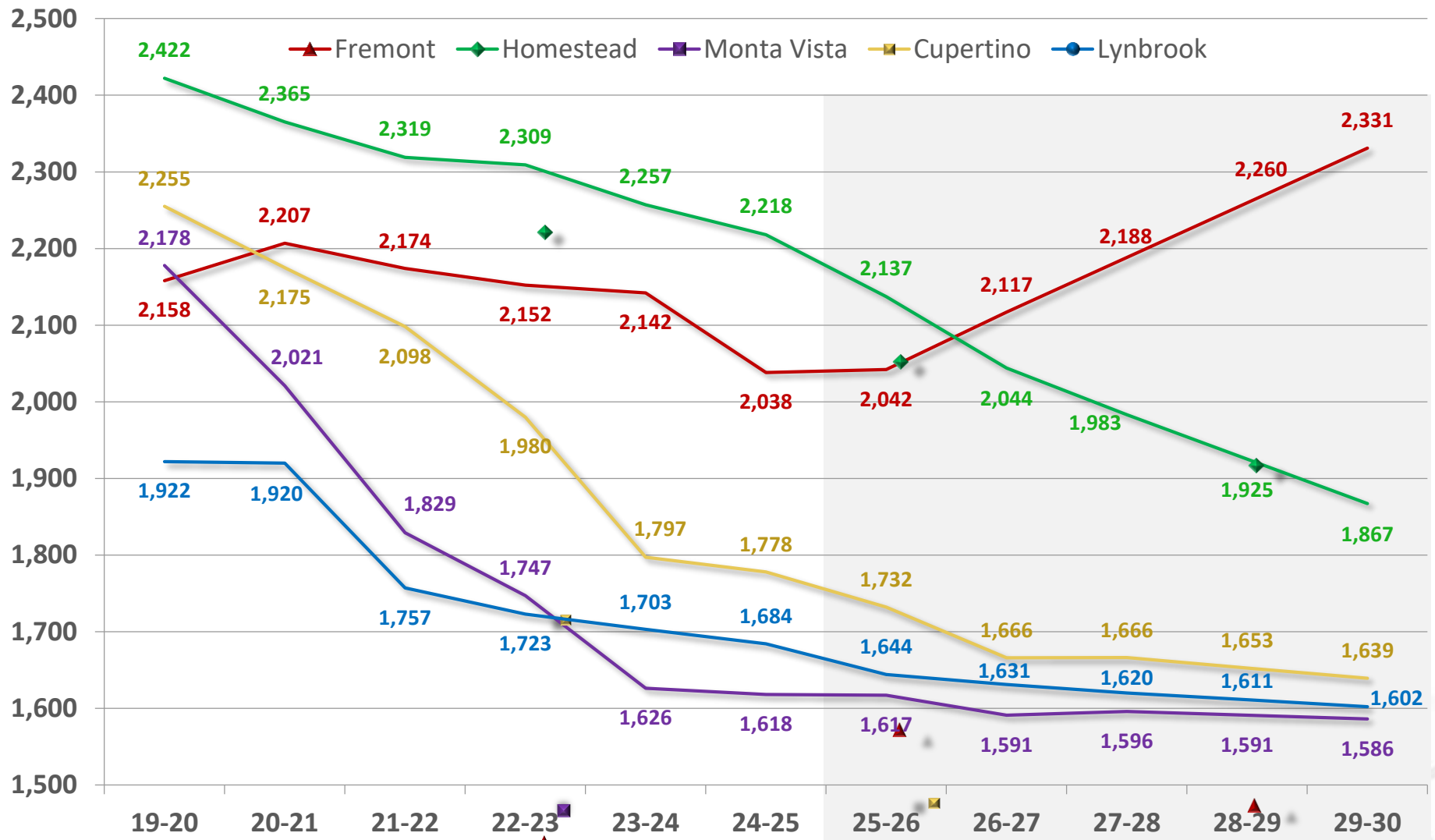


SCHOOL RESIDENT ENROLLMENT*



*2023-24 and beyond are projected enrollments. 2025-26 & 2026-27 are extrapolated totals.

SCHOOL ATTENDING ENROLLMENT*



* 2025-26 and beyond are projections. 2027-28 & 2028-29 are extrapolated totals. Data shows LSSAP and MSSAP continuing for all years shown. Does not include NPS, US or CDS students.

Lynbrook Supplemental School Assignment Program

Beginning in 2017-18, all eighth graders at Miller Middle School and McAuliffe Middle School who reside in the FUHSD attendance area, but not within the LHS attendance area, have the option to choose to attend LHS.

All eighth graders who reside in the Hyde Middle School attendance area have the option to apply to attend LHS. Lottery will be used in the case of more Hyde Middle School attendance area applicants than available slots.



UPDATE ON LYNBROOK TRANSFER PROGRAM



2025-26 LSSAP APPLICATIONS (AS OF 2-7-2025)

- Total of 120 eligible applications received
- Goal of 65 transfers – CAC recommended
- High number from Miller/McAuliffe
- High number from Monta Vista
- Lottery held and all applicants notified Feb. 10 at 9:00 am

High School	Total
Cupertino	95
Fremont	7
Homestead	1
Monta Vista	17
TOTAL	120

Middle School	Total
Hyde	49
Miller	53
McAuliffe	3
Lawson	4
Private/Other	11
TOTAL	120



Monta Vista Supplemental School Assignment Program

Beginning in 2023-24, all eighth graders who reside in the Homestead High School attendance area have the option to apply to attend Monta Vista High School. Currently open for 30 transfers each year. A Lottery will be used if there are more than 30 eligible applicants.



UPDATE ON MONTA VISTA TRANSFER PROGRAM



2025-26 MSSAP APPLICATIONS (AS OF x-xx-2025)

- Total of 26 eligible applications (most ever)
- Goal of 30 transfers - all from Homestead boundary
- High number of private school student applications
- Typically have 5-10 deny the transfer
- Application will remain open for additional applicants

APPLICATION DATA COMPARED TO LAST YEAR:

2025-26	Total
Cupertino MS	5
Lawson MS	2
Sunnyvale MS	9
Private/Other	10
TOTAL	26

2024-25	Total
Cupertino MS	8
Lawson MS	0
Sunnyvale MS	9
Private/Other	3
TOTAL	20