

LEA Name : Northwestern Lehigh SD
Address : 6493 Route 309
New Tripoli , PA 18066

County : Lehigh
AUN Number : 121394603
LEA Type : SD

Annual Financial Report Accuracy Certification Statement

For Fiscal Year Ending
6/30/2024

Pennsylvania Department of Education
&
Office of Comptroller Operations

PDE-2056: Intermediate Unit
PDE-2057: School District, AVTS/CTC, Charter School,
and Special Program Jointure


CERTIFICATION: By signing this page I agree that the electronic data submitted is a complete and accurate statement of the financial operations and status of the local education agency for the fiscal year. It has been prepared in accordance with generally accepted accounting principles and established Commonwealth of PA reporting guidelines.



Chief School Administrator Signature

11.20.24

Date



Board Secretary Signature

11/20/24

Date

Christie Steigerwalt

Contact Person

(610)298-8661 Ext :

Contact Person Telephone Number

steigerwaltc2@nwlehighsd.org

Contact Person E-mail Address

(610)298-8661

Contact Person Fax Number

Audit Certification
Annual Financial Report:
For Fiscal Year Ending **6/30/2024**
(Pursuant to PA School Code Section 218(b))

LEA Name : Northwestern Lehigh SD
AUN Number : 121394603
County : Lehigh

Audit Certification Due: 12/31/2024

This certification is applicable to the Annual Financial Report data submitted through the Consolidated Financial Reporting System (CFRS).

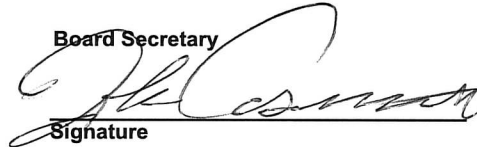
CERTIFICATION: By signing this page I agree that the financial statements of the school have been properly audited as noted above pursuant to Article XXIV, and in the auditor's professional opinion, the Annual Financial Report (PDE-2057) submitted through CFRS is materially consistent with the audited financial statements.

Chief School Administrator


Signature

11.20.24
Date

Board Secretary


Signature

10/20/24
Date

Page 2

Christie Steigerwalt

Contact Person

steigerwaltc2@nwlehighsd.org

Contact Person E-mail Address

(610)298-8661

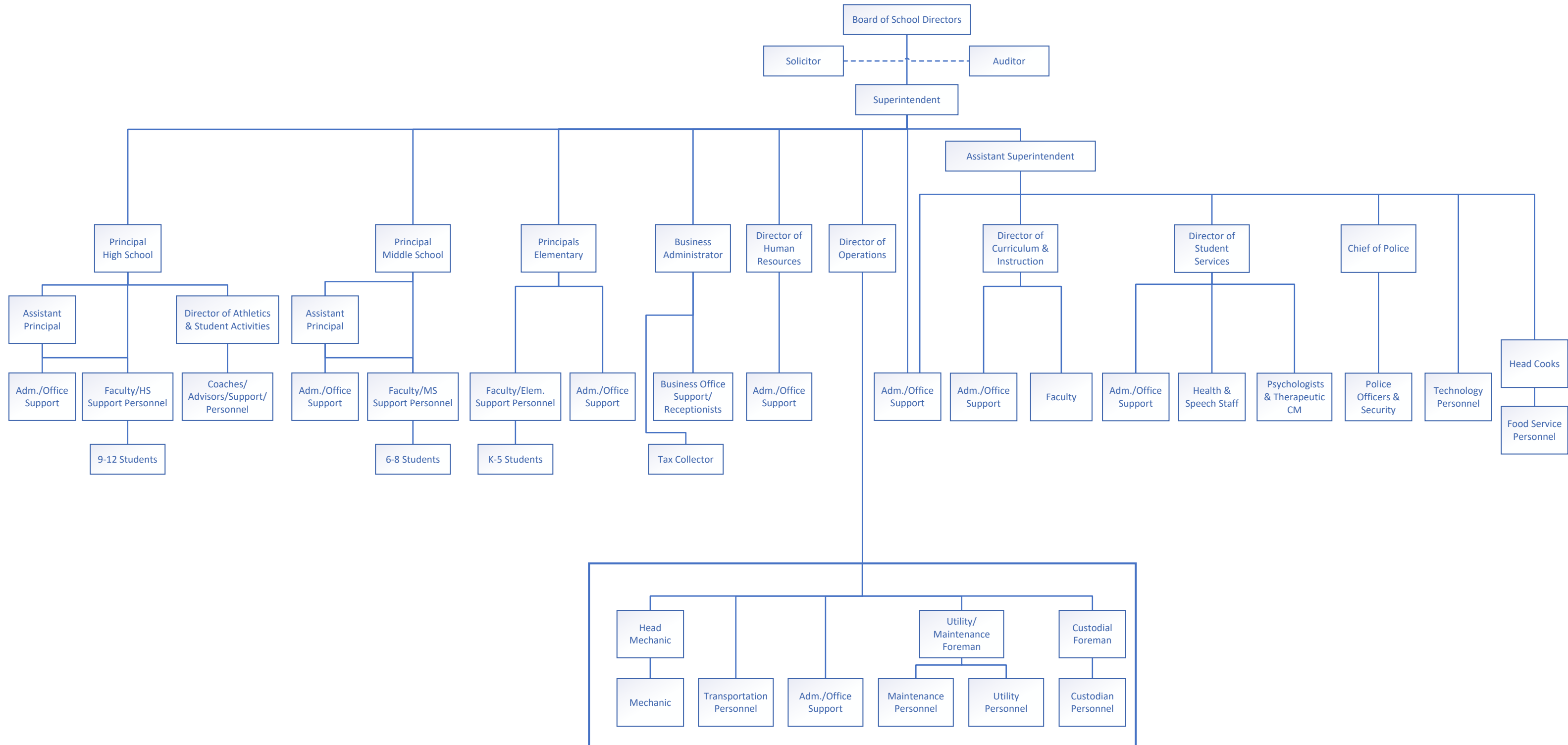
Ext :

Contact Person Telephone Number

(610)298-8661

Contact Person Fax Number

School Board Policy 008 – Organizational Chart





Book	Policy Manual
Section	600 Finances
Title	GASB Statement 34
Code	622
Status	Active
Adopted	November 14, 2012
Last Revised	June 21, 2023

Purpose

The Northwestern Lehigh School District Board of Directors recognizes the need to implement the required accounting and financial reporting standards stipulated by the Pennsylvania Department of Education.

GASB Statement 34 was issued to provide new and additional information to the diverse users of District financial statements. In addition to the information contained in previous financial reporting, GASB 34 will now provide information in a highly aggregated manner looking at the long-term financial health of the District. This new information will require District to account for capital assets in a manner different than previously recorded. The intent is to provide an additional set of entity-wide financial statements more similar to the private sector.

The primary objectives of GASB 34 include:

1. New entity-wide financial statements reflecting the overall financial position of the District.
2. Long-term focus for District activities.
3. Narrative overview and analysis.
4. Information on major funds.
5. Expanded budgetary reporting.

It is important to note that the methods, calculations and procedures for determining the budgetary process of the District will not be affected by the implementation of the new standards. The information contained in previous financial statements will largely be in the same format.

Authority

Participation of the District in any such activity shall be in accordance with Board policy.[\[1\]](#)[\[2\]](#)

Definitions

A **capitalized asset** shall be any asset acquired by donation or purchase that has a useful life of longer than one (1) year or extends the life of another capitalized asset or increases its value and meets a specific dollar threshold. At management's discretion, and in conjunction with the local auditor, capital assets purchased with long-term debt may be capitalized regardless of the specific dollar threshold for the type or class of asset required.

Lease - A contract that conveys control of the right to use another entity's nonfinancial asset (underlying asset) as specified by the contract for a period of time in an exchange or exchange-like transaction.

Short-term lease - A lease that, at the beginning of its term, has a maximum possible term under the contract, including any option to extend, of twelve (12) months or less.

Financed Purchase - If a contract: (1) transfers ownership of the underlying asset to the lessee by the end of the contract, and (2) does not contain termination options other than fiscal funding or cancellation clauses, the contract is not a lease and should be reported as a financed purchase.

Delegation of Responsibility

The responsibility to coordinate the compilation and preparation of all information necessary to implement this policy is delegated to the Business Administrator, in cooperation with the local independent auditor.

The designated individual shall be responsible for implementing the necessary procedures to establish and maintain a fixed asset inventory, including depreciation schedules. Depreciation shall be computed on a straight-line basis over the useful lives of the assets. Periodically, management shall evaluate the estimated useful life of each depreciable asset to determine if revision of such estimate is required. Normal maintenance and repairs shall be charged to expense as incurred; major renewals and betterments that materially extend the life or increase the value of the asset shall be capitalized. A schedule of accumulated depreciation shall be consistent from year to year. The basis for depreciation, including groups of assets and useful lives, shall be in writing and submitted for review to the Board.

The Business Administrator shall prepare the required Management Discussion And Analysis (MD&A). The MD&A shall be in the form required by GASB Statement 34 and shall be submitted to the Board for approval, prior to publication.

Prior to submission of the MD&A for Board approval, the District's independent auditors shall review the MD&A, in accordance with SAS No. 52, 'Required Supplementary Information'.

Guidelines

In order to associate debt with acquired assets and to avoid net asset deficits, any asset that has been acquired with debt proceeds shall be capitalized, regardless of the cost of the asset. The asset life of these assets shall be considered relative to the time of the respective debt amortizations.

For all other assets not acquired by debt proceeds, the dollar value of any single item for inclusion in the fixed assets accounts shall be not less than \$5,000.

Assets that fall below the capitalization threshold for GASB 34 reporting purposes may still be significant for insurance, warranty service, and obsolescence/replacement policy tracking purposes. The District may record and maintain these non-GASB 34 asset inventories in subsidiary ledgers.

In compliance with GASB 87, Leases Standard, leases that are not classified as short-term and whose aggregate payments made or received exceed \$20,000 will be capitalized except as noted below:

1. Leases that transfer ownership and do not contain termination options.
2. Short-term leases (twelve (12) months or less).

3. Leases of assets that are investments.
4. Intangible assets (mineral rights, patents, software, copyrights).
5. Biological assets (timber, living plants, living animals).
6. Supply contracts.
7. \$1 Leases or similar, not an exchange/exchange-like transaction.

In compliance with GASB 96, A SBITAs (Subscription-Based Information Technology Arrangements), is a contract that conveys control of the right to use another party's (a SBITA vendor's) information technology (IT) software, alone or in combination with a tangible capital asset (the underlying IT assets), as specified in the contract for a period of time in an exchange or exchange-like transaction.

The subscription term includes the period during which a government has a non-cancellable right to use the underlying IT assets. The subscription term also includes periods covered by an option to extend (if it is reasonably certain that the government or SBITA vendor will exercise that option) or to terminate (if it is reasonably certain that the government or SBITA vendor will not exercise that option).

The District will capitalize a lease liability that's dollar value exceeds \$20,000 with a maximum possible term of more than one (1) year except as noted below:

1. Combination of IT software and tangible capital assets that fall under GASB 87, Leases, were the software component is insignificant to the cost of the tangible asset.
2. Governments that provide the right to use their IT software and associated capital assets to other entities through SBITAs.
3. Contracts that are defined as Partnerships in GASB 94.
4. Licensing arrangements that provide a perpetual license to governments to the vendor's computer software, which are subject to GASB 51.

Legal

[1. 24 P.S. 218](#)

[2. 24 P.S. 613](#)

[Governmental Accounting Standards Board, Statement 34](#)

<u>Val Number</u>	<u>Description</u>	<u>Justification</u>
41162	<p>Expenditure Detail, Salaries (Object 100) and Benefits (Object 200 series): Amounts must be entered for both Salaries and Benefits.</p> <p>Please verify following fund and function codes: Fund 10 Function 1190; Fund 10 Function 1430;</p>	<p>1190-No benefits were reclassified to federal grants for 2023-2024 1430-This was for purchased services from 2009-2010; at the time the employee worked hourly as a homebound instructor</p>
42420	<p>Expenditure Detail: Total current year 2700-513 expenditure varies from prior year by 10%. Correct the data or enter a justification.</p> <p>2700-513, AFR Exp Detail: \$7,045.80 2700-513, PY AFR Amount: \$13,752.28</p>	<p>The transportation agreement was only for half the school year compared to the majority of the school year in 2022-2023.</p>
50430	<p>SESS - 2160 Social Work Services: SESS Schedule amounts for Special Education vary from prior year by 40% or more. Correct the data or enter a justification.</p> <p>SESS Schedule 2160: \$0.00 Prior Year SESS Schedule 2160: \$25,857.30</p>	<p>The position of social workers was eliminated because the ESSER funds were no longer available.</p>
50440	<p>SESS - 2260 Instruction and Curriculum Development Services: SESS Schedule amounts for Special Education vary from prior year by 40% or more. Correct the data or enter a justification.</p> <p>SESS Schedule 2260: \$0.00 Prior Year SESS Schedule 2260: \$89,829.46</p>	<p>Direct costs are no longer associated with the Director of Special Education in Curriculum Development Services.</p>
50450	<p>SESS - 2350 Legal and Accounting Services: SESS Schedule amounts for Special Education vary from prior year by 40% or more. Correct the data or enter a justification.</p> <p>SESS Schedule 2350: \$28,843.23 Prior Year SESS Schedule 2350: \$20,347.65</p>	<p>There was an increase in legal services due to pending claims.</p>

Amounts Expressed in Whole Dollars

	<u>General Fund</u> <u>(10)</u>	<u>Student Sponsored</u> <u>Activity Fund</u> <u>(21)</u>	<u>Public Purpose Trust</u> <u>(27)</u>	<u>Other Compt Approved</u> <u>(28)</u>	<u>Athletic / Activity</u> <u>(29)</u>
Assets And Deferred Outflows Of Resources					
Assets					
0100 Cash and Cash Equivalents	5,131,413	76,689			
0110 Investments	18,000,000				
0120 Taxes Receivable	984,935				
0130 Due From Other Funds	459,265				
0141 Due From Other Governments	2,377,386				
0142 State Revenue Receivable					
0143 Federal Revenue Receivable					
0145 Other Intergovernmental Revenue Receivable					
0146 Due from Primary Government					
0147 Due from Component Unit					
0150 Other Receivables	9,964				
0170 Inventories					
0180 Prepaid Expenses (Expenditures)	585,242				
0190 Other Current Assets					
Total Assets	\$27,548,205	\$76,689			
0910 Deferred Outflows of Resources					
Total Assets And Deferred Outflows Of Resources	\$27,548,205	\$76,689			

Amounts Expressed in Whole Dollars

<u>Capital Reserve (690.</u>	<u>Capital Reserve (1431)</u>	<u>Other Capital Projects</u>	<u>Debt Service</u>	<u>Permanent</u>
<u>1850)</u>	<u>(32)</u>	<u>Fund</u>	<u>(40)</u>	<u>(90)</u>
<u>(31)</u>		<u>(39)</u>		

Assets And Deferred Outflows Of Resources

Assets

0100	Cash and Cash Equivalents	4,118,790	731,475
0110	Investments		
0120	Taxes Receivable		
0130	Due From Other Funds		
0141	Due From Other Governments		
0142	State Revenue Receivable		
0143	Federal Revenue Receivable		
0145	Other Intergovernmental Revenue Receivable		
0146	Due from Primary Government		
0147	Due from Component Unit		
0150	Other Receivables		
0170	Inventories		
0180	Prepaid Expenses (Expenditures)		
0190	Other Current Assets		
Total Assets		\$4,118,790	\$731,475
0910	Deferred Outflows of Resources		
Total Assets And Deferred Outflows Of Resources		\$4,118,790	\$731,475

Amounts Expressed in Whole Dollars

Total Governmental Funds

Assets And Deferred Outflows Of Resources

Assets	
0100 Cash and Cash Equivalents	10,058,367
0110 Investments	18,000,000
0120 Taxes Receivable	984,935
0130 Due From Other Funds	459,265
0141 Due From Other Governments	2,377,386
0142 State Revenue Receivable	
0143 Federal Revenue Receivable	
0145 Other Intergovernmental Revenue Receivable	
0146 Due from Primary Government	
0147 Due from Component Unit	
0150 Other Receivables	9,964
0170 Inventories	
0180 Prepaid Expenses (Expenditures)	585,242
0190 Other Current Assets	
Total Assets	\$32,475,159
0910 Deferred Outflows of Resources	
Total Assets And Deferred Outflows Of Resources	\$32,475,159

Amounts Expressed in Whole Dollars

	<u>General Fund</u> <u>(10)</u>	<u>Student Sponsored</u> <u>Activity Fund</u> <u>(21)</u>	<u>Public Purpose Trust</u> <u>(27)</u>	<u>Other Compt Approved</u> <u>(28)</u>	<u>Athletic / Activity</u> <u>(29)</u>
Liabilities And Deferred Inflows Of Resources And Fund Balances					
Liabilities					
0400 Due to Other Funds	786,869	146			
0411 Due to Other Governments	528,553				
0412 Due to Primary Government					
0413 Due to Component Unit					
0420 Accounts Payable	803,605	334			
0430 Contracts Payable					
0440 Current Portion of Long-Term Debt	152,223				
0450 Short-Term Payables					
0461 Accrued Salaries and Benefits	2,797,299				
0462 Payroll Deductions and Withholding	1,962,461				
0480 Unearned Revenues					
0490 Other Current Liabilities	27,169				
Total Liabilities	\$7,058,179	\$480			
0950 Deferred Inflows of Resources	803,362				
Fund Balances					
0810 Nonspendable Fund Balance	585,242				
0820 Restricted Fund Balance	311,883				
0830 Committed Fund Balance	9,636,307				
0840 Assigned Fund Balance	7,266,933	76,209			
0850 Unassigned Fund Balance	1,886,299				
Total Fund Balances	\$19,686,664	\$76,209			
Total Liabilities, Deferred Inflows Of Resources And Fund Balances	\$27,548,205	\$76,689			

Amounts Expressed in Whole Dollars

<u>Capital Reserve (690.</u>	<u>Capital Reserve (1431)</u>	<u>Other Capital Projects</u>	<u>Debt Service</u>	<u>Permanent</u>
<u>1850)</u>	<u>(32)</u>	<u>Fund</u>	<u>(40)</u>	<u>(90)</u>
<u>(31)</u>		<u>(39)</u>		

Liabilities And Deferred Inflows Of Resources And Fund Balances

Liabilities

0400 Due to Other Funds				
0411 Due to Other Governments				
0412 Due to Primary Government				
0413 Due to Component Unit				
0420 Accounts Payable			22,084	
0430 Contracts Payable				
0440 Current Portion of Long-Term Debt				
0450 Short-Term Payables				
0461 Accrued Salaries and Benefits				
0462 Payroll Deductions and Withholding				
0480 Unearned Revenues				
0490 Other Current Liabilities				

Total Liabilities				\$22,084
--------------------------	--	--	--	-----------------

0950 Deferred Inflows of Resources

Fund Balances

0810 Nonspendable Fund Balance				
0820 Restricted Fund Balance		4,118,790	709,391	
0830 Committed Fund Balance				
0840 Assigned Fund Balance				
0850 Unassigned Fund Balance				

Total Fund Balances		\$4,118,790		\$709,391
----------------------------	--	--------------------	--	------------------

Total Liabilities, Deferred Inflows Of Resources And Fund Balances		\$4,118,790		\$731,475
---	--	--------------------	--	------------------

Amounts Expressed in Whole Dollars

Total Governmental Funds

Liabilities And Deferred Inflows Of Resources And Fund Balances

Liabilities

0400 Due to Other Funds	787,015
0411 Due to Other Governments	528,553
0412 Due to Primary Government	
0413 Due to Component Unit	
0420 Accounts Payable	826,023
0430 Contracts Payable	
0440 Current Portion of Long-Term Debt	152,223
0450 Short-Term Payables	
0461 Accrued Salaries and Benefits	2,797,299
0462 Payroll Deductions and Withholding	1,962,461
0480 Unearned Revenues	
0490 Other Current Liabilities	27,169

Total Liabilities \$7,080,743

0950 Deferred Inflows of Resources	803,362
------------------------------------	---------

Fund Balances

0810 Nonspendable Fund Balance	585,242
0820 Restricted Fund Balance	5,140,064
0830 Committed Fund Balance	9,636,307
0840 Assigned Fund Balance	7,343,142
0850 Unassigned Fund Balance	1,886,299

Total Fund Balances \$24,591,054

Total Liabilities, Deferred Inflows Of Resources And Fund Balances \$32,475,159

Amounts Expressed in Whole Dollars	<u>General Fund</u> <u>(10)</u>	<u>Student Sponsored</u> <u>Activity Fund</u> <u>(21)</u>	<u>Public Purpose Trust</u> <u>(27)</u>	<u>Other Compt Approved</u> <u>(28)</u>	<u>Athletic / Activity</u> <u>(29)</u>
Revenues					
6000 Revenue from Local Sources	35,800,343	118,727			
7000 Revenue from State Sources	15,334,278				
8000 Revenue from Federal Sources	337,939				
Total Revenues	\$51,472,560	\$118,727			
Expenditures					
1000 Instruction	27,807,735				
2000 Support Services	16,017,789				
3000 Operation of Non-Instructional Services	1,158,704	99,124			
4000 Facilities Acquisition, Construction and Improvement Services					
5110 Debt Service	4,592,770				
5130 Refund of Prior Year Revenues / Receipts					
5140 Leases and Other Right-to-Use Arrangements	9,551				
Total Expenditures	\$49,586,549	\$99,124			
Excess (Deficiency) Of Revenues Over Expenditures	\$1,886,011	\$19,603			
Other Financing Sources (Uses)					
9110 Face Value of Bonds Issued					
9120 Proceeds from Refunding of Bonds					
9130 Bond Premiums					
9200 Proceeds from Extended Term Financing, Leases, and Other Right-to-Use Arrangements	47,756				
9300 Interfund Transfers - IN	24,758				
9400 Sale of or Compensation for Loss of Fixed Assets	8,766				
9710 Transfers from Component Units					
9720 Transfers from Primary Governments					
9910 Other Financing Sources Not Listed in the 9000 Series					
9990 Insurance Recoveries					
5120 Debt Service – Refunded Bonds					
5150 Bond Discounts					
5200 Interfund Transfers – Out					
5300 Transfers Out to Component Units/Primary Governments					
Total Other Financing Sources (Uses)	\$81,280				

Amounts Expressed in Whole Dollars	<u>Capital Reserve (690.1850)</u> <u>(31)</u>	<u>Capital Reserve (1431)</u> <u>(32)</u>	<u>Other Capital Projects</u> <u>Fund</u> <u>(39)</u>	<u>Debt Service</u> <u>(40)</u>	<u>Permanent</u> <u>(90)</u>
Revenues					
6000 Revenue from Local Sources		74,678	38,015		
7000 Revenue from State Sources					
8000 Revenue from Federal Sources					
Total Revenues		\$74,678	\$38,015		
Expenditures					
1000 Instruction					
2000 Support Services		128,285			
3000 Operation of Non-Instructional Services					
4000 Facilities Acquisition, Construction and Improvement Services		141,318	7,409,123		
5110 Debt Service					
5130 Refund of Prior Year Revenues / Receipts					
5140 Leases and Other Right-to-Use Arrangements					
Total Expenditures		\$269,603	\$7,409,123		
Excess (Deficiency) Of Revenues Over Expenditures		(\$194,925)	(\$7,371,108)		
Other Financing Sources (Uses)					
9110 Face Value of Bonds Issued					
9120 Proceeds from Refunding of Bonds					
9130 Bond Premiums					
9200 Proceeds from Extended Term Financing, Leases, and Other Right-to-Use Arrangements					
9300 Interfund Transfers - IN					
9400 Sale of or Compensation for Loss of Fixed Assets					
9710 Transfers from Component Units					
9720 Transfers from Primary Governments					
9910 Other Financing Sources Not Listed in the 9000 Series					
9990 Insurance Recoveries					
5120 Debt Service – Refunded Bonds					
5150 Bond Discounts					
5200 Interfund Transfers – Out					
5300 Transfers Out to Component Units/Primary Governments					
Total Other Financing Sources (Uses)					

Amounts Expressed in Whole Dollars	<u>Total Governmental Funds</u>
Revenues	
6000 Revenue from Local Sources	36,031,763
7000 Revenue from State Sources	15,334,278
8000 Revenue from Federal Sources	337,939
Total Revenues	\$51,703,980
Expenditures	
1000 Instruction	27,807,735
2000 Support Services	16,146,074
3000 Operation of Non-Instructional Services	1,257,828
4000 Facilities Acquisition, Construction and Improvement Services	7,550,441
5110 Debt Service	4,592,770
5130 Refund of Prior Year Revenues / Receipts	
5140 Leases and Other Right-to-Use Arrangements	9,551
Total Expenditures	\$57,364,399
Excess (Deficiency) Of Revenues Over Expenditures	(\$5,660,419)
Other Financing Sources (Uses)	
9110 Face Value of Bonds Issued	
9120 Proceeds from Refunding of Bonds	
9130 Bond Premiums	
9200 Proceeds from Extended Term Financing, Leases, and Other Right-to-Use Arrangements	47,756
9300 Interfund Transfers - IN	24,758
9400 Sale of or Compensation for Loss of Fixed Assets	8,766
9710 Transfers from Component Units	
9720 Transfers from Primary Governments	
9910 Other Financing Sources Not Listed in the 9000 Series	
9990 Insurance Recoveries	
5120 Debt Service – Refunded Bonds	
5150 Bond Discounts	
5200 Interfund Transfers – Out	
5300 Transfers Out to Component Units/Primary Governments	
Total Other Financing Sources (Uses)	\$81,280

Amounts Expressed in Whole Dollars	<u>General Fund</u> <u>(10)</u>	<u>Student Sponsored</u> <u>Activity Fund</u> <u>(21)</u>	<u>Public Purpose Trust</u> <u>(27)</u>	<u>Other Compt Approved</u> <u>(28)</u>	<u>Athletic / Activity</u> <u>(29)</u>
Special And Extraordinary Items					
9920 Special Items – Gains					
9930 Extraordinary Items – Gains					
5520 Special Items – Losses					
5530 Extraordinary Items – Losses					
Net Change In Fund Balances	\$1,967,291	\$19,603			
Fund Balance					
0001 Fund Balance - Beginning of Fiscal Year	17,719,371	56,607			
Fund Balance - End Of Year	\$19,686,662	\$76,210			

Amounts Expressed in Whole Dollars	<u>Capital Reserve (690.</u> <u>1850)</u> <u>(31)</u>	<u>Capital Reserve (1431)</u> <u>(32)</u>	<u>Other Capital Projects</u> <u>Fund</u> <u>(39)</u>	<u>Debt Service</u> <u>(40)</u>	<u>Permanent</u> <u>(90)</u>
Special And Extraordinary Items					
9920 Special Items – Gains					
9930 Extraordinary Items – Gains					
5520 Special Items – Losses					
5530 Extraordinary Items – Losses					
Net Change In Fund Balances		(\$194,925)	(\$7,371,108)		
Fund Balance					
0001 Fund Balance - Beginning of Fiscal Year		4,313,715	8,080,498		
Fund Balance - End Of Year		\$4,118,790	\$709,390		

Amounts Expressed in Whole Dollars	<u>Total Governmental Funds</u>
Special And Extraordinary Items	
9920 Special Items – Gains	
9930 Extraordinary Items – Gains	
5520 Special Items – Losses	
5530 Extraordinary Items – Losses	
Net Change In Fund Balances	(\$5,579,139)
Fund Balance	
0001 Fund Balance - Beginning of Fiscal Year	30,170,191
Fund Balance - End Of Year	\$24,591,052

Amounts Expressed in Whole Dollars	<u>Food Service</u> <u>(51)</u>	<u>Child Care</u> <u>Operations</u> <u>(52)</u>	<u>Other Enterprise</u> <u>(58)</u>	<u>TOTAL</u>	<u>Internal Service</u> <u>(60)</u>
Assets And Deferred Outflows Of Resources					
Current Assets					
0100 Cash and Cash Equivalents	65		48,353	48,418	
0110 Investments					
0130 Due From Other Funds	1,501,888		1,010	1,502,898	
0141 Due From Other Governments	64,621			64,621	
0142 State Revenue Receivable					
0143 Federal Revenue Receivable					
0146 Due from Primary Government					
0147 Due from Component Unit					
0150 Other Receivables	24,202			24,202	
0170 Inventories	79,867		10	79,877	
0180 Prepaid Expenses (Expenditures)					
0190 Other Current Assets					
Total Current Assets	\$1,670,643		\$49,373	\$1,720,016	
Noncurrent Assets					
0211 Land					
0212 Site Improvements (Net)					
0220 Buildings and Building Improvements (Net)					
0230 Tangible Property and Intangible Right-To-Use Assets (Net)	102,267		62,396	164,663	
0250 Construction in Progress					
0260 Long Term Prepayments					
0290 Other Noncurrent Assets					
Total Noncurrent Assets	\$102,267		\$62,396	\$164,663	
0910 Deferred Outflows of Resources	144,194			144,194	
Total Assets And Deferred Outflows Of Resources	\$1,917,104		\$111,769	\$2,028,873	

Amounts Expressed in Whole Dollars	<u>Food Service</u> <u>(51)</u>	<u>Child Care</u> <u>Operations</u> <u>(52)</u>	<u>Other Enterprise</u> <u>(58)</u>	<u>TOTAL</u>	<u>Internal Service</u> <u>(60)</u>
Liabilities And Deferred Inflows Of Resources And Net Position					
Current Liabilities					
0400 Due to Other Funds	1,144,099		30,448	1,174,547	
0411 Due to Other Governments					
0413 Due to Component Unit					
0420 Accounts Payable	27,520			27,520	
0430 Contracts Payable					
0440 Current Portion of Long-Term Debt					
0450 Short-Term Payables					
0461 Accrued Salaries and Benefits	677			677	
0462 Payroll Deductions and Withholding					
0480 Unearned Revenues	62,869		1,640	64,509	
0490 Other Current Liabilities					
Total Current Liabilities	\$1,235,165		\$32,088	\$1,267,253	
Noncurrent Liabilities					
0510 Bonds Payable					
0520 Extended-Term Financing Agreements Payable					
0530 Lease and Other Right-To-Use Obligations					
0540 Accumulated Compensated Absences					
0550 Authority Lease Obligations					
0560 Other Post-Employment Benefits (OPEB)	37,451			37,451	
0570 Net Pension Liability	995,575			995,575	
0599 Other Noncurrent Liabilities	27,987			27,987	
Total Noncurrent Liabilities	\$1,061,013			\$1,061,013	
Total Liabilities	\$2,296,178		\$32,088	\$2,328,266	
0950 Deferred Inflows of Resources	25,706			25,706	
Net Position					
0791 Net Investment in Capital Assets	102,267		62,396	164,663	
0008 Restricted Net Position (0792 – 0798)					
0799 Unrestricted Net Position	(507,047)		17,285	(489,762)	
Total Net Position	(\$404,780)		\$79,681	(\$325,099)	
Total Liabilities And Deferred Inflows Of Resources And Net Position	\$1,917,104		\$111,769	\$2,028,873	

Amounts Expressed in Whole Dollars	<u>Food Service</u> <u>(51)</u>	<u>Child Care Operations</u> <u>(52)</u>	<u>Other Enterprise</u> <u>(58)</u>	<u>TOTAL</u>	<u>Internal Service</u> <u>(60)</u>
Operating Revenues					
6600 Food Service Revenue	463,711			463,711	
0071 Charges for Services			29,442	29,442	
0072 Other Operating Revenue	6,967		5,430	12,397	
Total Operating Revenues	\$470,678		\$34,872	\$505,550	
Operating Expenses					
100 Personnel Services – Salaries	296,177		4,863	301,040	
200 Personnel Services – Employee Benefits	88,700		2,020	90,720	
300 Purchased Professional and Technical Services					
400 Purchased Property Services	49,171			49,171	
500 Other Purchased Services	35			35	
600 Supplies	540,546		20,166	560,712	
740 Depreciation	9,963		7,261	17,224	
770 Amortization Expense					
810 Dues and Fees					
880 Refunds of Prior Years' Receipts					
890 Miscellaneous Expenditures	600		1,672	2,272	
Total Operating Expenses	\$985,192		\$35,982	\$1,021,174	
Operating Income (Loss)	(\$514,514)		(\$1,110)	(\$515,624)	
Non Operating Revenues (Expenses)					
6500 Earnings on Investments			452	452	
6830 Federal Revenue from Intermediary Sources					
6920 Contributions and Donations from Private Sources					
6930 Gains or Losses on Sale of Fixed Assets					
6991 Refunds of a Prior Year Expenditure					
7000 Revenue from State Sources	140,442		1,010	141,452	
8000 Revenue from Federal Sources	496,256			496,256	
9990 Insurance Recoveries					
820 Claims and Judgments Against the LEA					
830 Interest					
TOTAL Non Operating Revenues (Expenses)	\$636,698		\$1,462	\$638,160	
Income (Loss) Before Contributions And Transfers	\$122,184		\$352	\$122,536	

Amounts Expressed in Whole Dollars	<u>Food Service</u> <u>(51)</u>	<u>Child Care Operations</u> <u>(52)</u>	<u>Other Enterprise</u> <u>(58)</u>	<u>TOTAL</u>	<u>Internal Service</u> <u>(60)</u>
Contributions, Transfers, and Special and Extraordinary Items					
5200 Interfund Transfers – Out			24,758	24,758	
5300 Transfers Out to Component Units/Primary Governments					
5520 Special Items – Losses					
5530 Extraordinary Items – Losses					
9300 Interfund Transfers - IN					
9500 Capital Contributions					
9700 Transfers IN From Component Units/Primary Governments					
9920 Special Items – Gains					
9930 Extraordinary Items – Gains					
Change In Net Position	\$122,184		(\$24,406)	\$97,778	
0002 Net Position - Beginning of Fiscal Year	(526,964)		104,087	(422,877)	
0003 Accounting Changes / Residual Equity Transfers					
Net Position - End Of Year	(\$404,780)		\$79,681	(\$325,099)	

Amounts Expressed in Whole Dollars	<u>Food Service</u> <u>(51)</u>	<u>Child Care Operations</u> <u>(52)</u>	<u>Other Enterprise</u> <u>(58)</u>	<u>TOTAL</u>	<u>Internal Service(60)</u>
Cash Flows From Operating Activities					
0011 Cash Receipts From Users	451,972		28,432	480,404	
0012 Cash Receipts From Assessments Made to Other Funds					
0013 Cash Receipts From Earnings on Investments					
0014 Cash Receipts From Other Operating Revenue	11,605		5,430	17,035	
0015 Cash Payments To Employees For Services	419,093		6,883	425,976	
0016 Cash Payments For Insurance Claims					
0017 Cash Payments To Suppliers For Goods and Services	607,852		14,104	621,956	
0018 Cash Payments For Other Operating Expenses	600		1,672	2,272	
Net Cash Provided By (Used For) Operating Activities	(\$563,968)		\$11,203	(\$552,765)	
Cash Flows From Non-Capital Financing Activities					
0021 Receipts From Local Sources - 6000			1,010	1,010	
0022 Receipts From State Sources - 7000	141,492			141,492	
0023 Receipts From Federal Sources -8000	456,590			456,590	
0024 Notes and Loans Received (Repaid)					
0025 Interest Paid on Notes/Loans - 5100-830					
0026 Operating Transfers In (Out)/Residual Equity Trans					
0027 Operating Transfers In (Out) Primary Government / Comp Unit			(24,758)	(24,758)	
0028 Receipts From Refund of Prior Year Expenditures - 6991					
0029 Special and Extraordinary Gains (losses)					
0030 Receipts from Insurance Recoveries -9990					
Net Cash Prov By (Used for) Non-Capital Financing Activities	\$598,082		(\$23,748)	\$574,334	
Cash Flows From Capital and Related Financing Activities					
0031 Payments For Fac Acq, Const, and Imp - 4000					
0032 Proceeds from Disposal of Capital Assets					
0033 Proceeds From Extended Term Financing - 9200					
0034 Principal Paid on Financing Agreements					
0035 Interest Paid on Financing Agreements - 5100-830					
0036 (Inc) Dec in Contributed Capital	(34,049)			(34,049)	
Net Cash Prov By (Used for) Capital and Related Financing Activities	(\$34,049)			(\$34,049)	
Cash Flows From Investing Activities					
0041 Earnings on Investments - 6500			452	452	
0042 Purchase of Inv Securities / Deposits to Inv Pools					
0043 Receipts From Investment Pool Withdrawals					
0044 Proceeds from Sale and Maturity of Inv Securities					

LEA : 121394603 Northwestern Lehigh SD

Printed 11/26/2024 9:36:40 AM

0045 Loans Received (Paid)

Net Cash Prov By (Used for) Investing Activities	\$452	\$452
---	--------------	--------------

	<u>Food Service</u> <u>(51)</u>	<u>Child Care Operations</u> <u>(52)</u>	<u>Other Enterprise</u> <u>(58)</u>	<u>TOTAL</u>	<u>Internal Service</u> <u>(60)</u>
Net Increase (Decrease) in Cash Flows	65		(12,093)	(12,028)	
0004 Cash and Cash Equivalents Beginning of Year			60,446	60,446	
Cash and Cash Equivalents at Year End	\$65		\$48,353	\$48,418	
Reconciliation of Operating Income (Loss) To Net Cash Provided by (Used For) Operating Activities					
0005 Operating Income (Loss) per REP	(514,514)		(1,110)	(515,624)	
Adjustments					
0051 Depreciation and Net Amortization	9,963		7,261	17,224	
0052 Provision for Uncollectible Accounts					
0053 Other Adjustments	25,077			25,077	
Effect of Changes in Assets, Liabilities, Deferred Outflows and Deferred Inflows					
0054 (Inc) Dec In Accounts Receivable (0120-0150)	(5,681)			(5,681)	
0055 Advances to Other Funds	(606,486)		(1,010)	(607,496)	
0056 (Inc) Dec in Inventories (0170)	(245)		671	426	
0057 (Inc) Dec in Prepaid Expenses (0180)					
0058 (Inc) Dec in Other Current or Noncurrent Assets					
0064 Deferred Outflows (0910)	(25,464)			(25,464)	
0059 Inc (Dec) in Accounts Payable (0400-0450)	(11,309)			(11,309)	
0060 Inc (Dec) in Accrued Salaries/Benefits (0461)	25			25	
0065 Inc (Dec) in Net Pension Liabilities (0570)	(10,257)			(10,257)	
0066 Inc (Dec) in Other Postemp Benefit Oblig (0560)	(977)			(977)	
0061 Inc (Dec) in Payroll Deductions/Withholding (0462)					
0062 Inc (Dec) in Unearned Revenue (0480)					
0063 Inc (Dec) in Other Current or Noncurrent Liabilities	573,443		5,391	578,834	
0067 Deferred Inflows (0950)	2,457			2,457	
Total Adjustments	(\$49,454)		\$12,313	(\$37,141)	
Cash Provided By (Used for) Total	(\$563,968)		\$11,203	(\$552,765)	

COMBINED STATEMENT OF CASH FLOWS
SCHEDULE OF NONCASH INVESTING, CAPITAL, AND FINANCING ACTIVITIES

Explanation of Transaction and Balance Sheet Effect	Amount
Total	

LEA : 121394603 Northwestern Lehigh SD

Printed 11/26/2024 9:36:41 AM

Amounts Expressed in Whole Dollars

Private Purpose Trust
(71)

Investment Trust
(72)

Pension Trust
(73)

Student Activity Custodial
(81)

Assets And Deferred Outflows Of Resources

Assets

- 0100 Cash and Cash Equivalents
- 0110 Investments
- 0130 Due From Other Funds
- 0140 Due from Other Governments, Primary Government and Component Units
- 0150 Other Receivables
- 0170 Inventories
- 0180 Prepaid Expenses (Expenditures)
- 0190 Other Current Assets
- 0220 Buildings and Building Improvements (Net)
- 0230 Tangible Property and Intangible Right-To-Use Assets (Net)

Total Assets

- 0910 Deferred Outflows of Resources

Total Assets And Deferred Outflows Of Resources

LEA : 121394603 Northwestern Lehigh SD

Printed 11/26/2024 9:36:41 AM

Amounts Expressed in Whole Dollars	<u>Other Custodial</u> <u>(89)</u>	<u>Fiduciary Component Units</u> <u>(98)</u>	<u>Total Fiduciary Funds</u>
Assets And Deferred Outflows Of Resources			
Assets			
0100 Cash and Cash Equivalents	87,715		87,715
0110 Investments			
0130 Due From Other Funds	379		379
0140 Due from Other Governments, Primary Government and Component Units			
0150 Other Receivables			
0170 Inventories			
0180 Prepaid Expenses (Expenditures)			
0190 Other Current Assets			
0220 Buildings and Building Improvements (Net)			
0230 Tangible Property and Intangible Right-To-Use Assets (Net)			
Total Assets	\$88,094		\$88,094
0910 Deferred Outflows of Resources			
Total Assets And Deferred Outflows Of Resources	\$88,094		\$88,094

LEA : 121394603 Northwestern Lehigh SD

Printed 11/26/2024 9:36:41 AM

Amounts Expressed in Whole Dollars

Private Purpose Trust
(71)

Investment Trust
(72)

Pension Trust
(73)

Student Activity Custodial
(81)

Liabilities, Deferred Inflows Of Resources And Net Position

Liabilities

- 0400 Due to Other Funds
- 0410 Due to Other Governments, Primary Government and Component Units
- 0420 Accounts Payable
- 0430 Contracts Payable
- 0450 Short-Term Payables
- 0460 Payroll Accruals and Withholdings
- 0480 Unearned Revenues
- 0490 Other Current Liabilities

Total Liabilities

- 0950 Deferred Inflows of Resources

Net Position

- 0791 Net Investment in Capital Assets
- 0009 Restricted Net Position (0792 – 0798)
- 0799 Unrestricted Net Position

Total Net Position

Total Liabilities, Deferred Inflows Of Resources And Net Position

LEA : 121394603 Northwestern Lehigh SD

Printed 11/26/2024 9:36:41 AM

Amounts Expressed in Whole Dollars	<u>Other Custodial</u> <u>(89)</u>	<u>Fiduciary Component Units</u> <u>(98)</u>	<u>Total Fiduciary Funds</u>
Liabilities, Deferred Inflows Of Resources And Net Position			
Liabilities			
0400 Due to Other Funds	981		981
0410 Due to Other Governments, Primary Government and Component Units			
0420 Accounts Payable			
0430 Contracts Payable			
0450 Short-Term Payables			
0460 Payroll Accruals and Withholdings			
0480 Unearned Revenues			
0490 Other Current Liabilities			
Total Liabilities	\$981		\$981
0950 Deferred Inflows of Resources			
Net Position			
0791 Net Investment in Capital Assets			
0009 Restricted Net Position (0792 – 0798)	87,113		87,113
0799 Unrestricted Net Position			
Total Net Position	\$87,113		\$87,113
Total Liabilities, Deferred Inflows Of Resources And Net Position	\$88,094		\$88,094

Amounts Expressed in Whole Dollars	<u>Private Purpose Trust</u> (71)	<u>Investment Trust</u> (72)	<u>Pension Trust</u> (73)	<u>Student Activity</u> <u>Custodial</u> (81)	<u>Other Custodial</u> (89)	<u>Fiduciary Component</u> <u>Units</u> (98)
Additions						
0091 Gifts and Contributions					1,946	
0095 Net Investment Earnings					373	
0092 Other Additions					63,650	
Deductions						
0093 Scholarships Awarded						
0094 Other Deductions					69,840	
Change In Net Position					(\$3,871)	
0006 Net Position – Beginning of Fiscal Year					90,984	
0007 Net Position Held in Trust for Pension Benefits						
Net Position - End of Fiscal Year					\$87,113	

Amounts Expressed in Whole Dollars	<u>Total Fiduciary Funds</u>
Additions	
0091 Gifts and Contributions	1,946
0095 Net Investment Earnings	373
0092 Other Additions	63,650
Deductions	
0093 Scholarships Awarded	
0094 Other Deductions	69,840
Change in Net Position	(\$3,871)
0006 Net Position – Beginning of Fiscal Year	90,984
0007 Net Position Held in Trust for Pension Benefits	
Net Position - End of Fiscal Year	\$87,113

	<u>Revenue Reported In Current Year</u>	<u>Current Year Tax Accrual</u>	<u>Prior Year Tax Accrual</u>	<u>Taxes Collected In Current Year</u>
<u>Revenue from Local Sources</u>				
6111 Current Real Estate Taxes	29,338,722.65			29,338,722.65
6112 Interim Real Estate Taxes	195,807.95			195,807.95
6113 Public Utility Realty Taxes	27,923.28			27,923.28
6114 Payments in Lieu of Current Taxes - State / Local	5,732.57			5,732.57
6143 Current Act 511 Local Services Taxes	55,323.81			55,323.81
6151 Current Act 511 Earned Income Taxes	3,126,969.90			3,126,969.90
6153 Current Act 511 Real Estate Transfer Taxes	414,217.73			414,217.73
6411 Delinquent Real Estate Taxes	535,338.79			535,338.79
6412 Delinquent Interim Real Estate Taxes	20,264.86			20,264.86
6500 Earnings on Investments	1,179,599.23			
6700 Revenues from LEA Activities	101,756.10			
6831 Federal Revenue Received from Other Pennsylvania Public LEAs	7,830.00			
6832 Federal IDEA Revenue Received as Pass Through	444,379.29			
6910 Rentals	20,224.23			
6920 Contributions and Donations from Private Sources	240,383.66			
6943 Adult Education Tuition	1,665.00			
6944 Receipts from Other LEAs in Pennsylvania - Education	1,382.51			
6949 Other Tuition from Patrons	3,360.00			
6991 Refunds of a Prior Year Expenditure	33,293.18			
6992 Energy Efficiency Revenues and Incentives	12,009.29			
6999 Other Revenues Not Specified Above	34,159.38			
TOTAL Revenue from Local Sources	\$35,800,343.41			\$33,720,301.54

**Revenue Reported
In Current Year**

Revenue from State Sources

7111 Basic Education Funding-Formula	6,555,931.72		
7160 Tuition for Orphans Subsidy	6,044.84		
7271 Special Education funds for School-Aged Pupils	1,543,302.01		
7311 Pupil Transportation Subsidy	1,131,999.63		
7312 Nonpublic and Charter School Pupil Transportation Subsidy	54,285.00		
7320 Rental and Sinking Fund Payments / Building Reimbursement Subsidy	423,616.29		
7330 Health Services (Medical, Dental, Nurse, Act 25)	35,432.52		
7340 State Property Tax Reduction Allocation	849,287.74		
7362 School Mental Health & Safety and Security Grants	239,857.00		
7505 Ready to Learn Block Grant	230,490.00		
7599 Other State Revenue Not Listed Elsewhere in the 7000 Series	10,000.00		
7810 State Share of Social Security and Medicare Taxes	777,199.47		
7820 State Share of Retirement Contributions	3,476,832.05		
TOTAL Revenue from State Sources	\$15,334,278.27		

**Revenue Reported
In Current Year**

Revenue from Federal Sources

8514 Title I - Improving the Academic Achievement of the Disadvantaged	274,942.00			
8515 Title II - Preparing, Training, and Recruiting High Quality Teachers and Principals	40,030.00			
8517 Title IV - 21st Century Schools	22,016.00			
8751 ARP ESSER Learning Loss	951.32			
TOTAL Revenue from Federal Sources	\$337,939.32			

**Revenue Reported
In Current Year**

Other Financing Sources

9220 Leases and Other Right-to-Use Arrangements	47,756.25			
9350 Enterprise Fund Transfers	24,758.28			
9400 Sale of or Compensation for Loss of Fixed Assets	8,766.00			
TOTAL Other Financing Sources	\$81,280.53			
TOTAL FROM ALL SOURCES	\$51,553,841.53			\$33,720,301.54

LEA : 121394603 Northwestern Lehigh SD

Printed 11/26/2024 9:36:46 AM

	<u>General Fund (10)</u>	<u>Student Sponsored Activity Fund (21)</u>	<u>Public Purpose Trust (27)</u>	<u>Other Compt Approved (28)</u>	<u>Athletic / Activity (29)</u>	<u>Capital Reserve (690, 1850) (31)</u>
6000 Revenue from Local Sources						
6111 Current Real Estate Taxes	29,338,722.65					
6112 Interim Real Estate Taxes	195,807.95					
6113 Public Utility Realty Taxes	27,923.28					
6114 Payments in Lieu of Current Taxes - State / Local	5,732.57					
6143 Current Act 511 Local Services Taxes	55,323.81					
6151 Current Act 511 Earned Income Taxes	3,126,969.90					
6153 Current Act 511 Real Estate Transfer Taxes	414,217.73					
6411 Delinquent Real Estate Taxes	535,338.79					
6412 Delinquent Interim Real Estate Taxes	20,264.86					
6500 Earnings on Investments	1,179,599.23					
6700 Revenues from LEA Activities	101,756.10	118,726.91				
6831 Federal Revenue Received from Other Pennsylvania Public LEAs	7,830.00					
6832 Federal IDEA Revenue Received as Pass Through	444,379.29					
6910 Rentals	20,224.23					
6920 Contributions and Donations from Private Sources	240,383.66					
6943 Adult Education Tuition	1,665.00					
6944 Receipts from Other LEAs in Pennsylvania - Education	1,382.51					
6949 Other Tuition from Patrons	3,360.00					
6991 Refunds of a Prior Year Expenditure	33,293.18					
6992 Energy Efficiency Revenues and Incentives	12,009.29					
6999 Other Revenues Not Specified Above	34,159.38					
6000 Total Revenue from Local Sources	\$35,800,343.41	\$118,726.91				
7000 Revenue from State Sources						
7111 Basic Education Funding-Formula	6,555,931.72					
7160 Tuition for Orphans Subsidy	6,044.84					
7271 Special Education funds for School-Aged Pupils	1,543,302.01					
7311 Pupil Transportation Subsidy	1,131,999.63					
7312 Nonpublic and Charter School Pupil Transportation Subsidy	54,285.00					
7320 Rental and Sinking Fund Payments / Building Reimbursement Subsidy	423,616.29					
7330 Health Services (Medical, Dental, Nurse, Act 25)	35,432.52					
7340 State Property Tax Reduction Allocation	849,287.74					
7362 School Mental Health & Safety and Security Grants	239,857.00					
7505 Ready to Learn Block Grant	230,490.00					
7599 Other State Revenue Not Listed Elsewhere in the 7000 Series	10,000.00					
7810 State Share of Social Security and Medicare Taxes	777,199.47					

LEA : 121394603 Northwestern Lehigh SD

Printed 11/26/2024 9:36:46 AM

	<u>Capital Reserve</u> <u>(1431) (32)</u>	<u>Other Capital</u> <u>Projects Fund (39)</u>	<u>Debt Service (40)</u>	<u>Permanent (90)</u>	<u>Total</u>
6000 Revenue from Local Sources					
6111 Current Real Estate Taxes					29,338,722.65
6112 Interim Real Estate Taxes					195,807.95
6113 Public Utility Realty Taxes					27,923.28
6114 Payments in Lieu of Current Taxes - State / Local					5,732.57
6143 Current Act 511 Local Services Taxes					55,323.81
6151 Current Act 511 Earned Income Taxes					3,126,969.90
6153 Current Act 511 Real Estate Transfer Taxes					414,217.73
6411 Delinquent Real Estate Taxes					535,338.79
6412 Delinquent Interim Real Estate Taxes					20,264.86
6500 Earnings on Investments	74,678.25	38,014.95			1,292,292.43
6700 Revenues from LEA Activities					220,483.01
6831 Federal Revenue Received from Other Pennsylvania Public LEAs					7,830.00
6832 Federal IDEA Revenue Received as Pass Through					444,379.29
6910 Rentals					20,224.23
6920 Contributions and Donations from Private Sources					240,383.66
6943 Adult Education Tuition					1,665.00
6944 Receipts from Other LEAs in Pennsylvania - Education					1,382.51
6949 Other Tuition from Patrons					3,360.00
6991 Refunds of a Prior Year Expenditure					33,293.18
6992 Energy Efficiency Revenues and Incentives					12,009.29
6999 Other Revenues Not Specified Above					34,159.38
6000 Total Revenue from Local Sources	\$74,678.25	\$38,014.95			\$36,031,763.52
7000 Revenue from State Sources					
7111 Basic Education Funding-Formula					6,555,931.72
7160 Tuition for Orphans Subsidy					6,044.84
7271 Special Education funds for School-Aged Pupils					1,543,302.01
7311 Pupil Transportation Subsidy					1,131,999.63
7312 Nonpublic and Charter School Pupil Transportation Subsidy					54,285.00
7320 Rental and Sinking Fund Payments / Building Reimbursement Subsidy					423,616.29
7330 Health Services (Medical, Dental, Nurse, Act 25)					35,432.52
7340 State Property Tax Reduction Allocation					849,287.74
7362 School Mental Health & Safety and Security Grants					239,857.00
7505 Ready to Learn Block Grant					230,490.00
7599 Other State Revenue Not Listed Elsewhere in the 7000 Series					10,000.00
7810 State Share of Social Security and Medicare Taxes					777,199.47

	<u>General Fund (10)</u>	<u>Student Sponsored Activity Fund (21)</u>	<u>Public Purpose Trust (27)</u>	<u>Other Compt Approved (28)</u>	<u>Athletic / Activity (29)</u>	<u>Capital Reserve (690.1850) (31)</u>
7000 Revenue from State Sources						
7820 State Share of Retirement Contributions	3,476,832.05					
7000 Total Revenue from State Sources	\$15,334,278.27					
8000 Revenue from Federal Sources						
8514 Title I - Improving the Academic Achievement of the Disadvantaged	274,942.00					
8515 Title II - Preparing, Training, and Recruiting High Quality Teachers and Principals	40,030.00					
8517 Title IV - 21st Century Schools	22,016.00					
8751 ARP ESSER Learning Loss	951.32					
8000 Total Revenue from Federal Sources	\$337,939.32					
9000 Other Financing Sources						
9220 Leases and Other Right-to-Use Arrangements	47,756.25					
9350 Enterprise Fund Transfers	24,758.28					
9400 Sale of or Compensation for Loss of Fixed Assets	8,766.00					
9000 Total Other Financing Sources	\$81,280.53					
Total From All Sources	\$51,553,841.53	\$118,726.91				

	<u>Capital Reserve</u> <u>(1431) (32)</u>	<u>Other Capital</u> <u>Projects Fund (39)</u>	<u>Debt Service (40)</u>	<u>Permanent (90)</u>	<u>Total</u>
7000 Revenue from State Sources					
7820 State Share of Retirement Contributions					3,476,832.05
7000 Total Revenue from State Sources					\$15,334,278.27
8000 Revenue from Federal Sources					
8514 Title I - Improving the Academic Achievement of the Disadvantaged					274,942.00
8515 Title II - Preparing, Training, and Recruiting High Quality Teachers and Principals					40,030.00
8517 Title IV - 21st Century Schools					22,016.00
8751 ARP ESSER Learning Loss					951.32
8000 Total Revenue from Federal Sources					\$337,939.32
9000 Other Financing Sources					
9220 Leases and Other Right-to-Use Arrangements					47,756.25
9350 Enterprise Fund Transfers					24,758.28
9400 Sale of or Compensation for Loss of Fixed Assets					8,766.00
9000 Total Other Financing Sources					\$81,280.53
Total From All Sources	\$74,678.25	\$38,014.95			\$51,785,261.64

	<u>General Fund (10)</u>	<u>Student Sponsored Activity Fund (21)</u>	<u>Public Purpose Trust (27)</u>	<u>Other Compt Approved (28)</u>	<u>Athletic / Activity (29)</u>	<u>Capital Reserve (690. 1850) (31)</u>
Revenue from Local Sources	35,800,343.41	118,726.91				
Revenue from State Sources	15,334,278.27					
Revenue from Federal Sources	337,939.32					
Other Financing Sources	81,280.53					
Total From All Sources	\$51,553,841.53	\$118,726.91				

	<u>Capital Reserve (1431)</u> <u>(32)</u>	<u>Other Capital Projects</u> <u>Fund (39)</u>	<u>Debt Service (40)</u>	<u>Permanent (90)</u>	<u>Total</u>
Revenue from Local Sources	74,678.25	38,014.95			36,031,763.52
Revenue from State Sources					15,334,278.27
Revenue from Federal Sources					337,939.32
Other Financing Sources					81,280.53
Total From All Sources	\$74,678.25	\$38,014.95			\$51,785,261.64

General Fund (10)

	<u>Total</u>
1000 Instruction	
100 Personnel Services – Salaries	
100 Personnel Services – Salaries	12,948,511.50
Total Personnel Services – Salaries	\$12,948,511.50
200 Personnel Services – Employee Benefits	
210 Group Insurance – Contracted Provider	2,486,754.74
220 Social Security Contributions	959,249.94
230 PSERS Retirement Contributions	4,315,741.88
260 Workers’ Compensation	118,737.21
299 All Other Employee Benefits	36,107.50
Total Personnel Services – Employee Benefits	\$7,916,591.27
300 Purchased Professional and Technical Services	
322 Professional Educational Services – Ius	1,331,699.45
329 Professional Educational Services – Other	477,744.22
330 Other Professional Services	500.00
390 Other Purchased Professional and Technical Services	12,100.00
Total Purchased Professional and Technical Services	\$1,822,043.67
400 Purchased Property Services	
430 Repairs and Maintenance Services	6,397.94
440 Rentals	19,900.69
Total Purchased Property Services	\$26,298.63
500 Other Purchased Services	
530 Communications	11,643.00
550 Printing and Binding	508.19
561 Tuition To Other School Districts Within the State	9,929.28
562 Tuition To Pennsylvania Charter Schools	2,107,336.04
564 Tuition To Career and Technology Centers	1,698,570.70
566 Tuition To Institutions of Higher Education and Technical Institutes	231,423.00
567 Tuition To Approved Private Schools (APS) and PA Chartered Schools for the Deaf and Blind	50,236.16
580 Travel	4,141.36
594 IU Payment By Withholding for Institutionalized Children’s Programs – Special Classes	839.44
599 Other Miscellaneous Purchased Services	469.00
Total Other Purchased Services	\$4,115,096.17
600 Supplies	
610 General Supplies	232,041.92
630 Food	1,057.38
640 Books and Periodicals	110,013.53
650 Supplies & Fees – Technology Related	627,418.76
Total Supplies	\$970,531.59
800 Other Objects	
810 Dues and Fees	8,661.95
Total Other Objects	\$8,661.95
Total 1000 Instruction	\$27,807,734.78

General Fund (10)

1100 Regular Programs – Elementary / Secondary	<u>Elementary</u>	<u>Secondary</u>	<u>Federal</u>	<u>Total</u>
100 Personnel Services – Salaries				
100 Personnel Services – Salaries	4,981,783.82	4,784,237.73	262,601.53	10,028,623.08
Total Personnel Services – Salaries	\$4,981,783.82	\$4,784,237.73	\$262,601.53	\$10,028,623.08
200 Personnel Services – Employee Benefits				
210 Group Insurance – Contracted Provider	1,021,438.74	963,496.36		1,984,935.10
220 Social Security Contributions	388,824.27	351,635.62		740,459.89
230 PSERS Retirement Contributions	1,759,374.86	1,568,972.08		3,328,346.94
260 Workers' Compensation	46,405.08	46,405.08		92,810.16
299 All Other Employee Benefits	24,960.00	11,147.50		36,107.50
Total Personnel Services – Employee Benefits	\$3,241,002.95	\$2,941,656.64		\$6,182,659.59
300 Purchased Professional and Technical Services				
329 Professional Educational Services – Other	1,902.33	123,402.96	1,095.00	126,400.29
330 Other Professional Services		500.00		500.00
390 Other Purchased Professional and Technical Services	12,100.00			12,100.00
Total Purchased Professional and Technical Services	\$14,002.33	\$123,902.96	\$1,095.00	\$139,000.29
400 Purchased Property Services				
430 Repairs and Maintenance Services	5,031.14	1,366.80		6,397.94
440 Rentals	11,449.95	8,450.74		19,900.69
Total Purchased Property Services	\$16,481.09	\$9,817.54		\$26,298.63
500 Other Purchased Services				
530 Communications	5,821.50	5,821.50		11,643.00
550 Printing and Binding	413.59	94.60		508.19
562 Tuition To Pennsylvania Charter Schools	903,684.02	547,843.93		1,451,527.95
580 Travel	1,102.93	1,116.48		2,219.41
Total Other Purchased Services	\$911,022.04	\$554,876.51		\$1,465,898.55
600 Supplies				
610 General Supplies	112,602.86	110,100.50	5,232.18	227,935.54
630 Food	158.04	899.34		1,057.38
640 Books and Periodicals	49,751.31	55,601.56	4,211.01	109,563.88
650 Supplies & Fees – Technology Related	350,454.06	269,776.04	6,144.28	626,374.38
Total Supplies	\$512,966.27	\$436,377.44	\$15,587.47	\$964,931.18
800 Other Objects				
810 Dues and Fees	5,848.24	2,813.71		8,661.95
Total Other Objects	\$5,848.24	\$2,813.71		\$8,661.95
Total 1100 Regular Programs – Elementary / Secondary	\$9,683,106.74	\$8,853,682.53	\$279,284.00	\$18,816,073.27

General Fund (10)

	<u>Elementary</u>	<u>Secondary</u>	<u>Federal</u>	<u>Total</u>
1110 Regular Programs				
100 Personnel Services – Salaries				
100 Personnel Services – Salaries	4,981,783.82	4,784,237.73		9,766,021.55
Total Personnel Services – Salaries	\$4,981,783.82	\$4,784,237.73		\$9,766,021.55
200 Personnel Services – Employee Benefits				
210 Group Insurance – Contracted Provider	1,021,438.74	963,496.36		1,984,935.10
220 Social Security Contributions	388,824.27	351,635.62		740,459.89
230 PSERS Retirement Contributions	1,759,374.86	1,568,972.08		3,328,346.94
260 Workers' Compensation	46,405.08	46,405.08		92,810.16
299 All Other Employee Benefits	24,960.00	11,147.50		36,107.50
Total Personnel Services – Employee Benefits	\$3,241,002.95	\$2,941,656.64		\$6,182,659.59
300 Purchased Professional and Technical Services				
329 Professional Educational Services – Other	1,902.33	123,402.96		125,305.29
330 Other Professional Services		500.00		500.00
390 Other Purchased Professional and Technical Services	12,100.00			12,100.00
Total Purchased Professional and Technical Services	\$14,002.33	\$123,902.96		\$137,905.29
400 Purchased Property Services				
430 Repairs and Maintenance Services	5,031.14	1,366.80		6,397.94
440 Rentals	11,449.95	8,450.74		19,900.69
Total Purchased Property Services	\$16,481.09	\$9,817.54		\$26,298.63
500 Other Purchased Services				
530 Communications	5,821.50	5,821.50		11,643.00
550 Printing and Binding	413.59	94.60		508.19
562 Tuition To Pennsylvania Charter Schools	903,684.02	547,843.93		1,451,527.95
580 Travel	1,102.93	1,116.48		2,219.41
Total Other Purchased Services	\$911,022.04	\$554,876.51		\$1,465,898.55
600 Supplies				
610 General Supplies	112,602.86	110,100.50		222,703.36
630 Food	158.04	899.34		1,057.38
640 Books and Periodicals	49,751.31	55,601.56		105,352.87
650 Supplies & Fees – Technology Related	350,454.06	269,776.04		620,230.10
Total Supplies	\$512,966.27	\$436,377.44		\$949,343.71
800 Other Objects				
810 Dues and Fees	5,848.24	2,813.71		8,661.95
Total Other Objects	\$5,848.24	\$2,813.71		\$8,661.95
Total 1110 Regular Programs	\$9,683,106.74	\$8,853,682.53		\$18,536,789.27

General Fund (10)

	<u>Elementary</u>	<u>Secondary</u>	<u>Federal</u>	<u>Total</u>
1190 Federally-Funded Regular Programs				
100 Personnel Services – Salaries				
100 Personnel Services – Salaries			262,601.53	262,601.53
Total Personnel Services – Salaries			\$262,601.53	\$262,601.53
300 Purchased Professional and Technical Services				
329 Professional Educational Services – Other			1,095.00	1,095.00
Total Purchased Professional and Technical Services			\$1,095.00	\$1,095.00
600 Supplies				
610 General Supplies			5,232.18	5,232.18
640 Books and Periodicals			4,211.01	4,211.01
650 Supplies & Fees – Technology Related			6,144.28	6,144.28
Total Supplies			\$15,587.47	\$15,587.47
Total 1190 Federally-Funded Regular Programs			\$279,284.00	\$279,284.00

General Fund (10)

1200 Special Programs – Elementary / Secondary	<u>Elementary</u>	<u>Secondary</u>	<u>Federal</u>	<u>Total</u>
100 Personnel Services – Salaries				
100 Personnel Services – Salaries	1,288,376.11	1,129,429.02	502,083.29	2,919,888.42
Total Personnel Services – Salaries	\$1,288,376.11	\$1,129,429.02	\$502,083.29	\$2,919,888.42
200 Personnel Services – Employee Benefits				
210 Group Insurance – Contracted Provider	218,848.30	282,971.34		501,819.64
220 Social Security Contributions	110,592.58	108,197.47		218,790.05
230 PSERS Retirement Contributions	502,350.78	484,979.80		987,330.58
260 Workers' Compensation	23,157.01	2,770.04		25,927.05
Total Personnel Services – Employee Benefits	\$854,948.67	\$878,918.65		\$1,733,867.32
300 Purchased Professional and Technical Services				
322 Professional Educational Services – Ius	566,185.47	765,513.98		1,331,699.45
329 Professional Educational Services – Other	112,784.04	237,183.89		349,967.93
Total Purchased Professional and Technical Services	\$678,969.51	\$1,002,697.87		\$1,681,667.38
500 Other Purchased Services				
561 Tuition To Other School Districts Within the State	2,171.11	7,758.17		9,929.28
562 Tuition To Pennsylvania Charter Schools	352,434.06	303,374.03		655,808.09
567 Tuition To Approved Private Schools (APS) and PA Chartered Schools for the Deaf and Blind	25,118.08	25,118.08		50,236.16
580 Travel	1,307.41	614.54		1,921.95
594 IU Payment By Withholding for Institutionalized Children's Programs – Special Classes	419.72	419.72		839.44
599 Other Miscellaneous Purchased Services	156.32	312.68		469.00
Total Other Purchased Services	\$381,606.70	\$337,597.22		\$719,203.92
600 Supplies				
610 General Supplies	2,945.03	1,161.35		4,106.38
640 Books and Periodicals		449.65		449.65
650 Supplies & Fees – Technology Related	537.76	506.62		1,044.38
Total Supplies	\$3,482.79	\$2,117.62		\$5,600.41
Total 1200 Special Programs – Elementary / Secondary	\$3,207,383.78	\$3,350,760.38	\$502,083.29	\$7,060,227.45

General Fund (10)

1210 Life Skills Support

100 Personnel Services – Salaries

100 Personnel Services – Salaries

Total Personnel Services – Salaries

200 Personnel Services – Employee Benefits

210 Group Insurance – Contracted Provider

220 Social Security Contributions

230 PSERS Retirement Contributions

Total Personnel Services – Employee Benefits

Total 1210 Life Skills Support

	<u>Elementary</u>	<u>Secondary</u>	<u>Federal</u>	<u>Total</u>
		10,700.65		10,700.65
		\$10,700.65		\$10,700.65
		1,829.12		1,829.12
		813.25		813.25
		3,597.10		3,597.10
		\$6,239.47		\$6,239.47
		\$16,940.12		\$16,940.12

General Fund (10)

	<u>Elementary</u>	<u>Secondary</u>	<u>Federal</u>	<u>Total</u>
1220 Sensory Support				
100 Personnel Services – Salaries				
100 Personnel Services – Salaries	87,588.20	51,481.65		139,069.85
Total Personnel Services – Salaries	\$87,588.20	\$51,481.65		\$139,069.85
200 Personnel Services – Employee Benefits				
210 Group Insurance – Contracted Provider	15,504.85	25,290.73		40,795.58
220 Social Security Contributions	6,529.31	3,650.77		10,180.08
230 PSERS Retirement Contributions	29,779.99	17,503.71		47,283.70
Total Personnel Services – Employee Benefits	\$51,814.15	\$46,445.21		\$98,259.36
300 Purchased Professional and Technical Services				
329 Professional Educational Services – Other	1,022.46	5,949.54		6,972.00
Total Purchased Professional and Technical Services	\$1,022.46	\$5,949.54		\$6,972.00
500 Other Purchased Services				
580 Travel	122.15	122.15		244.30
Total Other Purchased Services	\$122.15	\$122.15		\$244.30
Total 1220 Sensory Support	\$140,546.96	\$103,998.55		\$244,545.51

General Fund (10)

1230 Emotional Support

	<u>Elementary</u>	<u>Secondary</u>	<u>Federal</u>	<u>Total</u>
100 Personnel Services – Salaries				
100 Personnel Services – Salaries	131,980.11	265,757.47	241,559.40	639,296.98
Total Personnel Services – Salaries	\$131,980.11	\$265,757.47	\$241,559.40	\$639,296.98
200 Personnel Services – Employee Benefits				
210 Group Insurance – Contracted Provider	17,020.87	114,677.59		131,698.46
220 Social Security Contributions	10,792.98	36,815.14		47,608.12
230 PSERS Retirement Contributions	48,381.11	166,285.97		214,667.08
260 Workers' Compensation	2,770.04	2,770.04		5,540.08
Total Personnel Services – Employee Benefits	\$78,965.00	\$320,548.74		\$399,513.74
300 Purchased Professional and Technical Services				
329 Professional Educational Services – Other	25,433.77	25,433.77		50,867.54
Total Purchased Professional and Technical Services	\$25,433.77	\$25,433.77		\$50,867.54
500 Other Purchased Services				
580 Travel	267.48	267.47		534.95
599 Other Miscellaneous Purchased Services	156.32	312.68		469.00
Total Other Purchased Services	\$423.80	\$580.15		\$1,003.95
600 Supplies				
610 General Supplies	51.47	332.99		384.46
Total Supplies	\$51.47	\$332.99		\$384.46
Total 1230 Emotional Support	\$236,854.15	\$612,653.12	\$241,559.40	\$1,091,066.67

General Fund (10)

1240 Academic Support

	<u>Elementary</u>	<u>Secondary</u>	<u>Federal</u>	<u>Total</u>
100 Personnel Services – Salaries				
100 Personnel Services – Salaries	1,068,807.80	801,489.25	260,523.89	2,130,820.94
Total Personnel Services – Salaries	\$1,068,807.80	\$801,489.25	\$260,523.89	\$2,130,820.94
200 Personnel Services – Employee Benefits				
210 Group Insurance – Contracted Provider	186,322.58	141,173.90		327,496.48
220 Social Security Contributions	93,270.29	66,918.31		160,188.60
230 PSERS Retirement Contributions	424,189.68	297,593.02		721,782.70
260 Workers' Compensation	20,386.97			20,386.97
Total Personnel Services – Employee Benefits	\$724,169.52	\$505,685.23		\$1,229,854.75
300 Purchased Professional and Technical Services				
329 Professional Educational Services – Other	117.25	2,715.55		2,832.80
Total Purchased Professional and Technical Services	\$117.25	\$2,715.55		\$2,832.80
500 Other Purchased Services				
580 Travel	917.78	224.92		1,142.70
Total Other Purchased Services	\$917.78	\$224.92		\$1,142.70
600 Supplies				
610 General Supplies	2,893.56	828.36		3,721.92
640 Books and Periodicals		449.65		449.65
650 Supplies & Fees – Technology Related	537.76	506.62		1,044.38
Total Supplies	\$3,431.32	\$1,784.63		\$5,215.95
Total 1240 Academic Support	\$1,797,443.67	\$1,311,899.58	\$260,523.89	\$3,369,867.14

General Fund (10)

	<u>Elementary</u>	<u>Secondary</u>	<u>Federal</u>	<u>Total</u>
1241 Learning Support – Public				
100 Personnel Services – Salaries				
100 Personnel Services – Salaries	1,030,677.38	733,565.53	260,523.89	2,024,766.80
Total Personnel Services – Salaries	\$1,030,677.38	\$733,565.53	\$260,523.89	\$2,024,766.80
200 Personnel Services – Employee Benefits				
210 Group Insurance – Contracted Provider	184,853.70	121,320.23		306,173.93
220 Social Security Contributions	90,379.48	61,985.58		152,365.06
230 PSERS Retirement Contributions	411,225.30	274,801.83		686,027.13
260 Workers' Compensation	20,386.97			20,386.97
Total Personnel Services – Employee Benefits	\$706,845.45	\$458,107.64		\$1,164,953.09
300 Purchased Professional and Technical Services				
329 Professional Educational Services – Other	117.25	2,715.55		2,832.80
Total Purchased Professional and Technical Services	\$117.25	\$2,715.55		\$2,832.80
500 Other Purchased Services				
580 Travel	224.92	224.92		449.84
Total Other Purchased Services	\$224.92	\$224.92		\$449.84
600 Supplies				
610 General Supplies	2,551.56	828.36		3,379.92
640 Books and Periodicals		449.65		449.65
650 Supplies & Fees – Technology Related	359.45	379.41		738.86
Total Supplies	\$2,911.01	\$1,657.42		\$4,568.43
Total 1241 Learning Support – Public	\$1,740,776.01	\$1,196,271.06	\$260,523.89	\$3,197,570.96

General Fund (10)

	<u>Elementary</u>	<u>Secondary</u>	<u>Federal</u>	<u>Total</u>
1243 Gifted Support				
100 Personnel Services – Salaries				
100 Personnel Services – Salaries	38,130.42	67,923.72		106,054.14
Total Personnel Services – Salaries	\$38,130.42	\$67,923.72		\$106,054.14
200 Personnel Services – Employee Benefits				
210 Group Insurance – Contracted Provider	1,468.88	19,853.67		21,322.55
220 Social Security Contributions	2,890.81	4,932.73		7,823.54
230 PSERS Retirement Contributions	12,964.38	22,791.19		35,755.57
Total Personnel Services – Employee Benefits	\$17,324.07	\$47,577.59		\$64,901.66
500 Other Purchased Services				
580 Travel	692.86			692.86
Total Other Purchased Services	\$692.86			\$692.86
600 Supplies				
610 General Supplies	342.00			342.00
650 Supplies & Fees – Technology Related	178.31	127.21		305.52
Total Supplies	\$520.31	\$127.21		\$647.52
Total 1243 Gifted Support	\$56,667.66	\$115,628.52		\$172,296.18

General Fund (10)

	<u>Elementary</u>	<u>Secondary</u>	<u>Federal</u>	<u>Total</u>
1290 Special Programs - Other Support				
300 <u>Purchased Professional and Technical Services</u>				
322 Professional Educational Services – Ius	566,185.47	765,513.98		1,331,699.45
329 Professional Educational Services – Other	86,210.56	203,085.03		289,295.59
Total Purchased Professional and Technical Services	\$652,396.03	\$968,599.01		\$1,620,995.04
500 <u>Other Purchased Services</u>				
561 Tuition To Other School Districts Within the State	2,171.11	7,758.17		9,929.28
562 Tuition To Pennsylvania Charter Schools	352,434.06	303,374.03		655,808.09
567 Tuition To Approved Private Schools (APS) and PA Chartered Schools for the Deaf and Blind	25,118.08	25,118.08		50,236.16
594 IU Payment By Withholding for Institutionalized Children’s Programs – Special Classes	419.72	419.72		839.44
Total Other Purchased Services	\$380,142.97	\$336,670.00		\$716,812.97
Total 1290 Special Programs - Other Support	\$1,032,539.00	\$1,305,269.01		\$2,337,808.01

General Fund (10)

1300 Vocational Education

Elementary

Secondary

Federal

Total

500 Other Purchased Services

564 Tuition To Career and Technology Centers

1,698,570.70

1,698,570.70

Total Other Purchased Services

\$1,698,570.70

\$1,698,570.70

Total 1300 Vocational Education

\$1,698,570.70

\$1,698,570.70

General Fund (10)

	<u>Elementary</u>	<u>Secondary</u>	<u>Federal</u>	<u>Total</u>
1400 Other Instructional Programs – Elementary / Secondary				
200 Personnel Services – Employee Benefits				
230 PSERS Retirement Contributions	32.18	32.18		64.36
Total Personnel Services – Employee Benefits	\$32.18	\$32.18		\$64.36
Total 1400 Other Instructional Programs – Elementary / Secondary	\$32.18	\$32.18		\$64.36

General Fund (10)

1430 Homebound Instruction

200 Personnel Services – Employee Benefits

230 PSERS Retirement Contributions

Total Personnel Services – Employee Benefits

Total 1430 Homebound Instruction

	<u>Elementary</u>	<u>Secondary</u>	<u>Federal</u>	<u>Total</u>
230 PSERS Retirement Contributions	32.18	32.18		64.36
Total Personnel Services – Employee Benefits	\$32.18	\$32.18		\$64.36
Total 1430 Homebound Instruction	\$32.18	\$32.18		\$64.36

General Fund (10)

	<u>Elementary</u>	<u>Secondary</u>	<u>Federal</u>	<u>Total</u>
1600 Adult Education Programs				
300 <u>Purchased Professional and Technical Services</u>				
329 Professional Educational Services – Other				1,376.00
Total Purchased Professional and Technical Services				\$1,376.00
500 <u>Other Purchased Services</u>				
566 Tuition To Institutions of Higher Education and Technical Institutes				231,423.00
Total Other Purchased Services				\$231,423.00
Total 1600 Adult Education Programs				\$232,799.00

General Fund (10)

2000 Support Services

Total

100 Personnel Services – Salaries

100 Personnel Services – Salaries 7,494,290.62

Total Personnel Services – Salaries \$7,494,290.62

200 Personnel Services – Employee Benefits

210 Group Insurance – Contracted Provider 1,135,348.59

220 Social Security Contributions 558,369.40

230 PSERS Retirement Contributions 2,460,462.28

240 Tuition Reimbursement 81,283.90

260 Workers' Compensation 45,737.17

299 All Other Employee Benefits 123,884.44

Total Personnel Services – Employee Benefits \$4,405,085.78

300 Purchased Professional and Technical Services

329 Professional Educational Services – Other 20,165.90

330 Other Professional Services 284,338.53

340 Technical Services 58,881.00

360 Employee Training and Development Services 21,223.57

390 Other Purchased Professional and Technical Services 2,340.00

Total Purchased Professional and Technical Services \$386,949.00

400 Purchased Property Services

410 Cleaning Services 43,717.00

420 Utility Services 119,651.68

430 Repairs and Maintenance Services 540,313.15

440 Rentals 25,137.48

450 Construction Services 12,554.00

460 Extermination Services 10,350.46

490 Other Purchased Property Services 45,868.68

Total Purchased Property Services \$797,592.45

500 Other Purchased Services

513 Contracted Carriers 7,045.80

516 Student Transportation Services From the IU 159,126.75

520 Insurance – General 40,226.00

522 Automotive Liability Insurance 53,403.00

523 General Property and Liability Insurance 147,397.90

529 Other Insurance 10,396.00

530 Communications 74,445.31

549 Other Advertising/Public Relations 35,824.16

550 Printing and Binding 10,098.88

580 Travel 17,305.30

595 IU Payments By Withholding 41,784.26

Total Other Purchased Services \$597,053.36

600 Supplies

610 General Supplies 665,714.18

620 Energy 934,865.92

630 Food 7,321.11

General Fund (10)

2000 Support Services

Total

600 Supplies

640 Books and Periodicals	8,508.91
650 Supplies & Fees – Technology Related	261,885.81

Total Supplies	\$1,878,295.93
-----------------------	-----------------------

700 Property

738 Technology Software Lease and Other Right-to-Use Arrangements	47,756.25
756 Capitalized Technology Equipment – Original	17,660.00
762 Capitalized Equipment - Replacement	308,781.00

Total Property	\$374,197.25
-----------------------	---------------------

800 Other Objects

810 Dues and Fees	53,018.44
820 Claims and Judgments Against the LEA	31,306.09

Total Other Objects	\$84,324.53
----------------------------	--------------------

Total 2000 Support Services	\$16,017,788.92
------------------------------------	------------------------

General Fund (10)

	<u>Elementary</u>	<u>Secondary</u>	<u>Federal</u>	<u>Total</u>
2100 Support Services – Students				
100 Personnel Services – Salaries				
100 Personnel Services – Salaries	421,116.81	610,604.86		1,031,721.67
Total Personnel Services – Salaries	\$421,116.81	\$610,604.86		\$1,031,721.67
200 Personnel Services – Employee Benefits				
210 Group Insurance – Contracted Provider	68,542.88	123,254.81		191,797.69
220 Social Security Contributions	29,534.49	45,370.05		74,904.54
230 PSERS Retirement Contributions	132,887.31	208,673.70		341,561.01
260 Workers' Compensation	3,022.42	3,022.42		6,044.84
299 All Other Employee Benefits	4,667.68	4,667.68		9,335.36
Total Personnel Services – Employee Benefits	\$238,654.78	\$384,988.66		\$623,643.44
300 Purchased Professional and Technical Services				
329 Professional Educational Services – Other	5,000.00	5,000.00		10,000.00
330 Other Professional Services		9,500.00		9,500.00
Total Purchased Professional and Technical Services	\$5,000.00	\$14,500.00		\$19,500.00
400 Purchased Property Services				
440 Rentals		55.27		55.27
Total Purchased Property Services		\$55.27		\$55.27
500 Other Purchased Services				
550 Printing and Binding	19.85	19.85		39.70
580 Travel	615.77	615.76		1,231.53
Total Other Purchased Services	\$635.62	\$635.61		\$1,271.23
600 Supplies				
610 General Supplies	843.50	20,910.44		21,753.94
650 Supplies & Fees – Technology Related	4,438.30	3,988.31		8,426.61
Total Supplies	\$5,281.80	\$24,898.75		\$30,180.55
800 Other Objects				
810 Dues and Fees	280.00	660.00		940.00
Total Other Objects	\$280.00	\$660.00		\$940.00
Total 2100 Support Services – Students	\$670,969.01	\$1,036,343.15		\$1,707,312.16

General Fund (10)

	<u>Elementary</u>	<u>Secondary</u>	<u>Federal</u>	<u>Total</u>
2110 Supervision of Student Services				
100 Personnel Services – Salaries				
100 Personnel Services – Salaries	101,774.98	101,774.98		203,549.96
Total Personnel Services – Salaries	\$101,774.98	\$101,774.98		\$203,549.96
200 Personnel Services – Employee Benefits				
210 Group Insurance – Contracted Provider	13,146.89	13,146.90		26,293.79
220 Social Security Contributions	7,300.78	7,300.79		14,601.57
230 PSERS Retirement Contributions	33,210.84	33,210.85		66,421.69
299 All Other Employee Benefits	4,667.68	4,667.68		9,335.36
Total Personnel Services – Employee Benefits	\$58,326.19	\$58,326.22		\$116,652.41
500 Other Purchased Services				
580 Travel	231.62	231.61		463.23
Total Other Purchased Services	\$231.62	\$231.61		\$463.23
600 Supplies				
650 Supplies & Fees – Technology Related	519.06	519.07		1,038.13
Total Supplies	\$519.06	\$519.07		\$1,038.13
Total 2110 Supervision of Student Services	\$160,851.85	\$160,851.88		\$321,703.73

General Fund (10)

	<u>Elementary</u>	<u>Secondary</u>	<u>Federal</u>	<u>Total</u>
2111 Supervision of Student Services – Head of Component				
100 Personnel Services – Salaries				
100 Personnel Services – Salaries	101,774.98	101,774.98		203,549.96
Total Personnel Services – Salaries	\$101,774.98	\$101,774.98		\$203,549.96
200 Personnel Services – Employee Benefits				
210 Group Insurance – Contracted Provider	13,146.89	13,146.90		26,293.79
220 Social Security Contributions	7,300.78	7,300.79		14,601.57
230 PSERS Retirement Contributions	33,210.84	33,210.85		66,421.69
299 All Other Employee Benefits	4,667.68	4,667.68		9,335.36
Total Personnel Services – Employee Benefits	\$58,326.19	\$58,326.22		\$116,652.41
500 Other Purchased Services				
580 Travel	231.62	231.61		463.23
Total Other Purchased Services	\$231.62	\$231.61		\$463.23
600 Supplies				
650 Supplies & Fees – Technology Related	519.06	519.07		1,038.13
Total Supplies	\$519.06	\$519.07		\$1,038.13
Total 2111 Supervision of Student Services – Head of Component	\$160,851.85	\$160,851.88		\$321,703.73

General Fund (10)

	<u>Elementary</u>	<u>Secondary</u>	<u>Federal</u>	<u>Total</u>
2120 Guidance Services				
100 Personnel Services – Salaries				
100 Personnel Services – Salaries	212,858.03	393,863.46		606,721.49
Total Personnel Services – Salaries	\$212,858.03	\$393,863.46		\$606,721.49
200 Personnel Services – Employee Benefits				
210 Group Insurance – Contracted Provider	40,484.13	100,031.89		140,516.02
220 Social Security Contributions	14,388.40	29,733.01		44,121.41
230 PSERS Retirement Contributions	64,439.92	137,854.18		202,294.10
260 Workers' Compensation	3,022.42	3,022.42		6,044.84
Total Personnel Services – Employee Benefits	\$122,334.87	\$270,641.50		\$392,976.37
300 Purchased Professional and Technical Services				
329 Professional Educational Services – Other	5,000.00	5,000.00		10,000.00
Total Purchased Professional and Technical Services	\$5,000.00	\$5,000.00		\$10,000.00
400 Purchased Property Services				
440 Rentals		55.27		55.27
Total Purchased Property Services		\$55.27		\$55.27
600 Supplies				
610 General Supplies	74.66	18,932.45		19,007.11
650 Supplies & Fees – Technology Related	450.00			450.00
Total Supplies	\$524.66	\$18,932.45		\$19,457.11
800 Other Objects				
810 Dues and Fees		380.00		380.00
Total Other Objects		\$380.00		\$380.00
Total 2120 Guidance Services	\$340,717.56	\$688,872.68		\$1,029,590.24

General Fund (10)

	<u>Elementary</u>	<u>Secondary</u>	<u>Federal</u>	<u>Total</u>
2140 Psychological Services				
100 Personnel Services – Salaries				
100 Personnel Services – Salaries	106,483.80	114,966.42		221,450.22
Total Personnel Services – Salaries	\$106,483.80	\$114,966.42		\$221,450.22
200 Personnel Services – Employee Benefits				
210 Group Insurance – Contracted Provider	14,911.86	10,076.02		24,987.88
220 Social Security Contributions	7,845.31	8,336.25		16,181.56
230 PSERS Retirement Contributions	35,236.55	37,608.67		72,845.22
Total Personnel Services – Employee Benefits	\$57,993.72	\$56,020.94		\$114,014.66
300 Purchased Professional and Technical Services				
330 Other Professional Services		9,500.00		9,500.00
Total Purchased Professional and Technical Services		\$9,500.00		\$9,500.00
500 Other Purchased Services				
550 Printing and Binding	19.85	19.85		39.70
580 Travel	384.15	384.15		768.30
Total Other Purchased Services	\$404.00	\$404.00		\$808.00
600 Supplies				
610 General Supplies	768.84	1,977.99		2,746.83
650 Supplies & Fees – Technology Related	3,469.24	3,469.24		6,938.48
Total Supplies	\$4,238.08	\$5,447.23		\$9,685.31
800 Other Objects				
810 Dues and Fees	280.00	280.00		560.00
Total Other Objects	\$280.00	\$280.00		\$560.00
Total 2140 Psychological Services	\$169,399.60	\$186,618.59		\$356,018.19

General Fund (10)

	<u>Elementary</u>	<u>Secondary</u>	<u>Federal</u>	<u>Total</u>
2200 Support Services – Instructional Staff				
100 Personnel Services – Salaries				
100 Personnel Services – Salaries	359,941.81	220,019.13		579,960.94
Total Personnel Services – Salaries	\$359,941.81	\$220,019.13		\$579,960.94
200 Personnel Services – Employee Benefits				
210 Group Insurance – Contracted Provider	63,348.29	52,784.41		116,132.70
220 Social Security Contributions	26,634.82	16,287.43		42,922.25
230 PSERS Retirement Contributions	120,200.44	74,500.07		194,700.51
240 Tuition Reimbursement	28,569.28	37,470.72		66,040.00
299 All Other Employee Benefits	4,262.53	5,550.53		9,813.06
Total Personnel Services – Employee Benefits	\$243,015.36	\$186,593.16		\$429,608.52
300 Purchased Professional and Technical Services				
329 Professional Educational Services – Other	5,631.23	4,534.67		10,165.90
360 Employee Training and Development Services	4,992.50	4,713.50	951.32	10,657.32
Total Purchased Professional and Technical Services	\$10,623.73	\$9,248.17	\$951.32	\$20,823.22
500 Other Purchased Services				
550 Printing and Binding	37.36	37.36		74.72
580 Travel	1,864.30	1,346.02		3,210.32
Total Other Purchased Services	\$1,901.66	\$1,383.38		\$3,285.04
600 Supplies				
610 General Supplies	926.96	308.99		1,235.95
640 Books and Periodicals	3,154.81	4,746.47		7,901.28
650 Supplies & Fees – Technology Related	9,942.55	22,257.00		32,199.55
Total Supplies	\$14,024.32	\$27,312.46		\$41,336.78
800 Other Objects				
810 Dues and Fees	494.50	494.50		989.00
Total Other Objects	\$494.50	\$494.50		\$989.00
Total 2200 Support Services – Instructional Staff	\$630,001.38	\$445,050.80	\$951.32	\$1,076,003.50

General Fund (10)

	<u>Elementary</u>	<u>Secondary</u>	<u>Federal</u>	<u>Total</u>
2230 Educational Television Services				
300 <u>Purchased Professional and Technical Services</u>				
329 Professional Educational Services – Other	949.07	941.83		1,890.90
Total Purchased Professional and Technical Services	\$949.07	\$941.83		\$1,890.90
Total 2230 Educational Television Services	\$949.07	\$941.83		\$1,890.90

General Fund (10)

	<u>Elementary</u>	<u>Secondary</u>	<u>Federal</u>	<u>Total</u>
2240 Computer-Assisted Instruction Support Services				
100 Personnel Services – Salaries				
100 Personnel Services – Salaries	6,437.18	5,208.74		11,645.92
Total Personnel Services – Salaries	\$6,437.18	\$5,208.74		\$11,645.92
200 Personnel Services – Employee Benefits				
220 Social Security Contributions	492.47	398.50		890.97
230 PSERS Retirement Contributions	2,188.61	1,770.97		3,959.58
Total Personnel Services – Employee Benefits	\$2,681.08	\$2,169.47		\$4,850.55
Total 2240 Computer-Assisted Instruction Support Services	\$9,118.26	\$7,378.21		\$16,496.47

General Fund (10)

2250 School Library Services	<u>Elementary</u>	<u>Secondary</u>	<u>Federal</u>	<u>Total</u>
100 Personnel Services – Salaries				
100 Personnel Services – Salaries	202,146.67	105,291.43		307,438.10
Total Personnel Services – Salaries	\$202,146.67	\$105,291.43		\$307,438.10
200 Personnel Services – Employee Benefits				
210 Group Insurance – Contracted Provider	32,862.03	34,261.59		67,123.62
220 Social Security Contributions	14,752.20	7,639.28		22,391.48
230 PSERS Retirement Contributions	66,315.30	35,219.16		101,534.46
Total Personnel Services – Employee Benefits	\$113,929.53	\$77,120.03		\$191,049.56
600 Supplies				
610 General Supplies	788.74	170.76		959.50
640 Books and Periodicals	2,768.69	4,360.36		7,129.05
650 Supplies & Fees – Technology Related	8,093.28	20,407.72		28,501.00
Total Supplies	\$11,650.71	\$24,938.84		\$36,589.55
Total 2250 School Library Services	\$327,726.91	\$207,350.30		\$535,077.21

General Fund (10)

	<u>Elementary</u>	<u>Secondary</u>	<u>Federal</u>	<u>Total</u>
2260 Instruction and Curriculum Development Services				
100 Personnel Services – Salaries				
100 Personnel Services – Salaries	151,079.70	109,394.22		260,473.92
Total Personnel Services – Salaries	\$151,079.70	\$109,394.22		\$260,473.92
200 Personnel Services – Employee Benefits				
210 Group Insurance – Contracted Provider	30,486.26	18,522.82		49,009.08
220 Social Security Contributions	11,369.96	8,240.59		19,610.55
230 PSERS Retirement Contributions	51,601.92	37,467.53		89,069.45
299 All Other Employee Benefits	4,262.53	5,550.53		9,813.06
Total Personnel Services – Employee Benefits	\$97,720.67	\$69,781.47		\$167,502.14
500 Other Purchased Services				
550 Printing and Binding	37.36	37.36		74.72
580 Travel	233.82	233.83		467.65
Total Other Purchased Services	\$271.18	\$271.19		\$542.37
600 Supplies				
610 General Supplies	138.22	138.23		276.45
650 Supplies & Fees – Technology Related	238.66	238.67		477.33
Total Supplies	\$376.88	\$376.90		\$753.78
800 Other Objects				
810 Dues and Fees	294.50	294.50		589.00
Total Other Objects	\$294.50	\$294.50		\$589.00
Total 2260 Instruction and Curriculum Development Services	\$249,742.93	\$180,118.28		\$429,861.21

General Fund (10)

2270 Instructional Staff Professional Development Services	<u>Elementary</u>	<u>Secondary</u>	<u>Federal</u>	<u>Total</u>
100 Personnel Services – Salaries				
100 Personnel Services – Salaries	278.26	124.74		403.00
Total Personnel Services – Salaries	\$278.26	\$124.74		\$403.00
200 Personnel Services – Employee Benefits				
220 Social Security Contributions	20.19	9.06		29.25
230 PSERS Retirement Contributions	94.61	42.41		137.02
240 Tuition Reimbursement	28,569.28	37,470.72		66,040.00
Total Personnel Services – Employee Benefits	\$28,684.08	\$37,522.19		\$66,206.27
300 Purchased Professional and Technical Services				
329 Professional Educational Services – Other	4,682.16	3,592.84		8,275.00
360 Employee Training and Development Services	4,992.50	4,713.50	951.32	10,657.32
Total Purchased Professional and Technical Services	\$9,674.66	\$8,306.34	\$951.32	\$18,932.32
500 Other Purchased Services				
580 Travel	1,630.48	1,112.19		2,742.67
Total Other Purchased Services	\$1,630.48	\$1,112.19		\$2,742.67
600 Supplies				
640 Books and Periodicals	386.12	386.11		772.23
650 Supplies & Fees – Technology Related	1,610.61	1,610.61		3,221.22
Total Supplies	\$1,996.73	\$1,996.72		\$3,993.45
800 Other Objects				
810 Dues and Fees	200.00	200.00		400.00
Total Other Objects	\$200.00	\$200.00		\$400.00
Total 2270 Instructional Staff Professional Development Services	\$42,464.21	\$49,262.18	\$951.32	\$92,677.71

General Fund (10)

	<u>Elementary</u>	<u>Secondary</u>	<u>Federal</u>	<u>Total</u>
2300 Support Services – Administration				
100 Personnel Services – Salaries				
100 Personnel Services – Salaries	586,209.71	651,455.77		1,683,513.25
Total Personnel Services – Salaries	\$586,209.71	\$651,455.77		\$1,683,513.25
200 Personnel Services – Employee Benefits				
210 Group Insurance – Contracted Provider	117,842.38	106,998.47		250,859.50
220 Social Security Contributions	42,894.10	47,941.97		123,261.70
230 PSERS Retirement Contributions	188,602.14	216,183.52		539,896.35
260 Workers' Compensation	5,986.18	5,986.17		15,869.84
299 All Other Employee Benefits	16,884.17	24,903.04		88,684.56
Total Personnel Services – Employee Benefits	\$372,208.97	\$402,013.17		\$1,018,571.95
300 Purchased Professional and Technical Services				
330 Other Professional Services				150,541.08
340 Technical Services				6,000.00
390 Other Purchased Professional and Technical Services				2,340.00
Total Purchased Professional and Technical Services				\$158,881.08
400 Purchased Property Services				
440 Rentals	355.63	511.95		9,382.61
Total Purchased Property Services	\$355.63	\$511.95		\$9,382.61
500 Other Purchased Services				
520 Insurance – General				40,226.00
530 Communications				5,902.45
549 Other Advertising/Public Relations				1,816.37
550 Printing and Binding				6,287.10
580 Travel	1,081.34	1,749.41		5,972.15
Total Other Purchased Services	\$1,081.34	\$1,749.41		\$60,204.07
600 Supplies				
610 General Supplies	1,711.15	1,251.68		6,529.10
630 Food	1,301.97	159.48		2,147.32
640 Books and Periodicals	63.04	152.00		507.63
650 Supplies & Fees – Technology Related	33.31	126.64		13,510.68
Total Supplies	\$3,109.47	\$1,689.80		\$22,694.73
800 Other Objects				
810 Dues and Fees	2,794.95	1,036.70		30,582.77
820 Claims and Judgments Against the LEA				31,306.09
Total Other Objects	\$2,794.95	\$1,036.70		\$61,888.86
Total 2300 Support Services – Administration	\$965,760.07	\$1,058,456.80		\$3,015,136.55

General Fund (10)

2310 Board Services

Elementary Secondary Federal Total

500 Other Purchased Services

520	Insurance – General			35,587.00
549	Other Advertising/Public Relations			1,816.37
580	Travel			2,469.20

Total Other Purchased Services **\$39,872.57**

600 Supplies

610	General Supplies			502.80
630	Food			81.14
650	Supplies & Fees – Technology Related			7,595.27

Total Supplies **\$8,179.21**

800 Other Objects

810	Dues and Fees			20,753.24
820	Claims and Judgments Against the LEA			31,306.09

Total Other Objects **\$52,059.33**

Total 2310 Board Services **\$100,111.11**

General Fund (10)

	<u>Elementary</u>	<u>Secondary</u>	<u>Federal</u>	<u>Total</u>
2330 Tax Assessment and Collection Services				
100 Personnel Services – Salaries				
100 Personnel Services – Salaries				32,341.73
Total Personnel Services – Salaries				\$32,341.73
200 Personnel Services – Employee Benefits				
220 Social Security Contributions				2,474.05
Total Personnel Services – Employee Benefits				\$2,474.05
300 Purchased Professional and Technical Services				
330 Other Professional Services				8,920.08
Total Purchased Professional and Technical Services				\$8,920.08
500 Other Purchased Services				
520 Insurance – General				4,639.00
530 Communications				5,902.45
550 Printing and Binding				1,681.53
Total Other Purchased Services				\$12,222.98
600 Supplies				
650 Supplies & Fees – Technology Related				4,940.00
Total Supplies				\$4,940.00
Total 2330 Tax Assessment and Collection Services				\$60,898.84

General Fund (10)

	<u>Elementary</u>	<u>Secondary</u>	<u>Federal</u>	<u>Total</u>
2350 Legal and Accounting Services				
300 <u>Purchased Professional and Technical Services</u>				
330 Other Professional Services				141,621.00
Total Purchased Professional and Technical Services				\$141,621.00
Total 2350 Legal and Accounting Services				\$141,621.00

General Fund (10)

2360 Office of the Superintendent / Executive Director Services

Elementary Secondary Federal Total

100 Personnel Services – Salaries				
100 Personnel Services – Salaries				413,506.04
Total Personnel Services – Salaries				\$413,506.04
200 Personnel Services – Employee Benefits				
210 Group Insurance – Contracted Provider				26,018.65
220 Social Security Contributions				29,951.58
230 PSERS Retirement Contributions				135,110.69
260 Workers' Compensation				3,897.49
299 All Other Employee Benefits				46,897.35
Total Personnel Services – Employee Benefits				\$241,875.76
500 Other Purchased Services				
550 Printing and Binding				185.00
580 Travel				672.20
Total Other Purchased Services				\$857.20
600 Supplies				
610 General Supplies				1,188.70
630 Food				604.73
640 Books and Periodicals				292.59
650 Supplies & Fees – Technology Related				815.46
Total Supplies				\$2,901.48
800 Other Objects				
810 Dues and Fees				5,997.88
Total Other Objects				\$5,997.88
Total 2360 Office of the Superintendent / Executive Director Services				\$665,138.36

General Fund (10)

2370 Community Relations Services

Elementary

Secondary

Federal

Total

300 Purchased Professional and Technical Services

340 Technical Services

6,000.00

Total Purchased Professional and Technical Services

\$6,000.00

Total 2370 Community Relations Services

\$6,000.00

General Fund (10)

	<u>Elementary</u>	<u>Secondary</u>	<u>Federal</u>	<u>Total</u>
2380 Office of the Principal Services				
100 Personnel Services – Salaries				
100 Personnel Services – Salaries	586,209.71	651,455.77		1,237,665.48
Total Personnel Services – Salaries	\$586,209.71	\$651,455.77		\$1,237,665.48
200 Personnel Services – Employee Benefits				
210 Group Insurance – Contracted Provider	117,842.38	106,998.47		224,840.85
220 Social Security Contributions	42,894.10	47,941.97		90,836.07
230 PSERS Retirement Contributions	188,602.14	216,183.52		404,785.66
260 Workers' Compensation	5,986.18	5,986.17		11,972.35
299 All Other Employee Benefits	16,884.17	24,903.04		41,787.21
Total Personnel Services – Employee Benefits	\$372,208.97	\$402,013.17		\$774,222.14
400 Purchased Property Services				
440 Rentals	355.63	511.95		867.58
Total Purchased Property Services	\$355.63	\$511.95		\$867.58
500 Other Purchased Services				
580 Travel	1,081.34	1,749.41		2,830.75
Total Other Purchased Services	\$1,081.34	\$1,749.41		\$2,830.75
600 Supplies				
610 General Supplies	1,711.15	1,251.68		2,962.83
630 Food	1,301.97	159.48		1,461.45
640 Books and Periodicals	63.04	152.00		215.04
650 Supplies & Fees – Technology Related	33.31	126.64		159.95
Total Supplies	\$3,109.47	\$1,689.80		\$4,799.27
800 Other Objects				
810 Dues and Fees	2,794.95	1,036.70		3,831.65
Total Other Objects	\$2,794.95	\$1,036.70		\$3,831.65
Total 2380 Office of the Principal Services	\$965,760.07	\$1,058,456.80		\$2,024,216.87

General Fund (10)

	<u>Elementary</u>	<u>Secondary</u>	<u>Federal</u>	<u>Total</u>
2390 Other Administration Services				
300 <u>Purchased Professional and Technical Services</u>				
390 Other Purchased Professional and Technical Services				2,340.00
Total Purchased Professional and Technical Services				\$2,340.00
400 <u>Purchased Property Services</u>				
440 Rentals				8,515.03
Total Purchased Property Services				\$8,515.03
500 <u>Other Purchased Services</u>				
550 Printing and Binding				4,420.57
Total Other Purchased Services				\$4,420.57
600 <u>Supplies</u>				
610 General Supplies				1,874.77
Total Supplies				\$1,874.77
Total 2390 Other Administration Services				\$17,150.37

General Fund (10)

	<u>Elementary</u>	<u>Secondary</u>	<u>Federal</u>	<u>Total</u>
2400 Support Services – Pupil Health				
100 Personnel Services – Salaries				
100 Personnel Services – Salaries				226,927.85
Total Personnel Services – Salaries				\$226,927.85
200 Personnel Services – Employee Benefits				
210 Group Insurance – Contracted Provider				77,737.07
220 Social Security Contributions				16,285.62
230 PSERS Retirement Contributions				74,683.01
Total Personnel Services – Employee Benefits				\$168,705.70
300 Purchased Professional and Technical Services				
330 Other Professional Services				27,537.50
Total Purchased Professional and Technical Services				\$27,537.50
600 Supplies				
610 General Supplies				11,505.54
Total Supplies				\$11,505.54
Total 2400 Support Services – Pupil Health				\$434,676.59

General Fund (10)

2420 Medical Services

	<u>Elementary</u>	<u>Secondary</u>	<u>Federal</u>	<u>Total</u>
100 Personnel Services – Salaries				
100 Personnel Services – Salaries				226,927.85
Total Personnel Services – Salaries				\$226,927.85
200 Personnel Services – Employee Benefits				
210 Group Insurance – Contracted Provider				77,737.07
220 Social Security Contributions				16,285.62
230 PSERS Retirement Contributions				74,683.01
Total Personnel Services – Employee Benefits				\$168,705.70
300 Purchased Professional and Technical Services				
330 Other Professional Services				27,302.50
Total Purchased Professional and Technical Services				\$27,302.50
600 Supplies				
610 General Supplies				11,505.54
Total Supplies				\$11,505.54
Total 2420 Medical Services				\$434,441.59

General Fund (10)

2430 Dental Services

Elementary

Secondary

Federal

Total

300 Purchased Professional and Technical Services

330 Other Professional Services

235.00

Total Purchased Professional and Technical Services

\$235.00

Total 2430 Dental Services

\$235.00

General Fund (10)

	<u>Elementary</u>	<u>Secondary</u>	<u>Federal</u>	<u>Total</u>
2500 Support Services – Business				
100 Personnel Services – Salaries				
100 Personnel Services – Salaries				435,642.74
Total Personnel Services – Salaries				\$435,642.74
200 Personnel Services – Employee Benefits				
210 Group Insurance – Contracted Provider				72,275.81
220 Social Security Contributions				32,635.58
230 PSERS Retirement Contributions				144,686.69
299 All Other Employee Benefits				7,412.81
Total Personnel Services – Employee Benefits				\$257,010.89
300 Purchased Professional and Technical Services				
330 Other Professional Services				33,768.00
340 Technical Services				2,620.00
Total Purchased Professional and Technical Services				\$36,388.00
400 Purchased Property Services				
410 Cleaning Services				660.00
440 Rentals				2,598.07
Total Purchased Property Services				\$3,258.07
500 Other Purchased Services				
530 Communications				4,989.79
550 Printing and Binding				1,158.86
580 Travel				106.11
Total Other Purchased Services				\$6,254.76
600 Supplies				
610 General Supplies				873.15
650 Supplies & Fees – Technology Related				33,690.54
Total Supplies				\$34,563.69
700 Property				
738 Technology Software Lease and Other Right-to-Use Arrangements				47,756.25
Total Property				\$47,756.25
800 Other Objects				
810 Dues and Fees				15,561.95
Total Other Objects				\$15,561.95
Total 2500 Support Services – Business				\$836,436.35

General Fund (10)

2510 Fiscal Services

Elementary Secondary Federal Total

100	<u>Personnel Services – Salaries</u>			
	100 Personnel Services – Salaries			435,642.74
Total Personnel Services – Salaries				\$435,642.74
200	<u>Personnel Services – Employee Benefits</u>			
	210 Group Insurance – Contracted Provider			72,275.81
	220 Social Security Contributions			32,635.58
	230 PSERS Retirement Contributions			144,686.69
	299 All Other Employee Benefits			7,412.81
Total Personnel Services – Employee Benefits				\$257,010.89
300	<u>Purchased Professional and Technical Services</u>			
	330 Other Professional Services			33,768.00
	340 Technical Services			2,620.00
Total Purchased Professional and Technical Services				\$36,388.00
400	<u>Purchased Property Services</u>			
	410 Cleaning Services			660.00
	440 Rentals			2,598.07
Total Purchased Property Services				\$3,258.07
500	<u>Other Purchased Services</u>			
	530 Communications			4,989.79
	550 Printing and Binding			1,158.86
	580 Travel			106.11
Total Other Purchased Services				\$6,254.76
600	<u>Supplies</u>			
	610 General Supplies			873.15
	650 Supplies & Fees – Technology Related			33,690.54
Total Supplies				\$34,563.69
700	<u>Property</u>			
	738 Technology Software Lease and Other Right-to-Use Arrangements			47,756.25
Total Property				\$47,756.25
800	<u>Other Objects</u>			
	810 Dues and Fees			15,561.95
Total Other Objects				\$15,561.95
Total 2510 Fiscal Services				\$836,436.35

General Fund (10)

	<u>Elementary</u>	<u>Secondary</u>	<u>Federal</u>	<u>Total</u>
2511 Supervision of Fiscal Services - Head of Component				
100 Personnel Services – Salaries				
100 Personnel Services – Salaries				263,086.26
Total Personnel Services – Salaries				\$263,086.26
200 Personnel Services – Employee Benefits				
210 Group Insurance – Contracted Provider				25,470.87
220 Social Security Contributions				19,875.41
230 PSERS Retirement Contributions				86,601.93
299 All Other Employee Benefits				7,412.81
Total Personnel Services – Employee Benefits				\$139,361.02
400 Purchased Property Services				
440 Rentals				438.07
Total Purchased Property Services				\$438.07
500 Other Purchased Services				
550 Printing and Binding				269.87
580 Travel				106.11
Total Other Purchased Services				\$375.98
600 Supplies				
610 General Supplies				492.11
650 Supplies & Fees – Technology Related				11,198.13
Total Supplies				\$11,690.24
700 Property				
738 Technology Software Lease and Other Right-to-Use Arrangements				47,756.25
Total Property				\$47,756.25
800 Other Objects				
810 Dues and Fees				2,433.00
Total Other Objects				\$2,433.00
Total 2511 Supervision of Fiscal Services - Head of Component				\$465,140.82

General Fund (10)

	<u>Elementary</u>	<u>Secondary</u>	<u>Federal</u>	<u>Total</u>
2519 Other Fiscal Services				
100 Personnel Services – Salaries				
100 Personnel Services – Salaries				172,556.48
Total Personnel Services – Salaries				\$172,556.48
200 Personnel Services – Employee Benefits				
210 Group Insurance – Contracted Provider				46,804.94
220 Social Security Contributions				12,760.17
230 PSERS Retirement Contributions				58,084.76
Total Personnel Services – Employee Benefits				\$117,649.87
300 Purchased Professional and Technical Services				
330 Other Professional Services				33,768.00
340 Technical Services				2,620.00
Total Purchased Professional and Technical Services				\$36,388.00
400 Purchased Property Services				
410 Cleaning Services				660.00
440 Rentals				2,160.00
Total Purchased Property Services				\$2,820.00
500 Other Purchased Services				
530 Communications				4,989.79
550 Printing and Binding				888.99
Total Other Purchased Services				\$5,878.78
600 Supplies				
610 General Supplies				381.04
650 Supplies & Fees – Technology Related				22,492.41
Total Supplies				\$22,873.45
800 Other Objects				
810 Dues and Fees				13,128.95
Total Other Objects				\$13,128.95
Total 2519 Other Fiscal Services				\$371,295.53

General Fund (10)

	<u>Elementary</u>	<u>Secondary</u>	<u>Federal</u>	<u>Total</u>
2600 Operation and Maintenance of Plant Services				
100 Personnel Services – Salaries				
100 Personnel Services – Salaries				1,714,421.21
Total Personnel Services – Salaries				\$1,714,421.21
200 Personnel Services – Employee Benefits				
210 Group Insurance – Contracted Provider				263,089.50
220 Social Security Contributions				130,184.70
230 PSERS Retirement Contributions				568,854.82
260 Workers' Compensation				11,840.36
299 All Other Employee Benefits				1,424.96
Total Personnel Services – Employee Benefits				\$975,394.34
300 Purchased Professional and Technical Services				
330 Other Professional Services				48,397.65
Total Purchased Professional and Technical Services				\$48,397.65
400 Purchased Property Services				
410 Cleaning Services				38,180.58
420 Utility Services				119,651.68
430 Repairs and Maintenance Services				414,355.24
440 Rentals				12,892.16
450 Construction Services				12,554.00
460 Extermination Services				10,350.46
490 Other Purchased Property Services				45,868.68
Total Purchased Property Services				\$653,852.80
500 Other Purchased Services				
523 General Property and Liability Insurance				147,397.90
529 Other Insurance				10,396.00
530 Communications				62,306.36
550 Printing and Binding				2,050.14
580 Travel				216.15
Total Other Purchased Services				\$222,366.55
600 Supplies				
610 General Supplies	179,176.63	209,383.39		388,560.02
620 Energy				682,989.83
630 Food				479.29
650 Supplies & Fees – Technology Related				34,250.29
Total Supplies	\$179,176.63	\$209,383.39		\$1,106,279.43
700 Property				
756 Capitalized Technology Equipment – Original				17,660.00
762 Capitalized Equipment - Replacement				56,803.00
Total Property				\$74,463.00
800 Other Objects				
810 Dues and Fees				2,065.00

General Fund (10)

2600 Operation and Maintenance of Plant Services

Elementary

Secondary

Federal

Total

Total Other Objects

\$2,065.00

Total 2600 Operation and Maintenance of Plant Services

\$179,176.63

\$209,383.39

\$4,797,239.98

General Fund (10)

	<u>Elementary</u>	<u>Secondary</u>	<u>Federal</u>	<u>Total</u>
2610 Supervision of Operation and Maintenance of Plant Services				
100 Personnel Services – Salaries				
100 Personnel Services – Salaries				44,970.10
Total Personnel Services – Salaries				\$44,970.10
200 Personnel Services – Employee Benefits				
210 Group Insurance – Contracted Provider				34,922.96
220 Social Security Contributions				4,886.62
230 PSERS Retirement Contributions				29,090.43
Total Personnel Services – Employee Benefits				\$68,900.01
400 Purchased Property Services				
440 Rentals				39.27
Total Purchased Property Services				\$39.27
500 Other Purchased Services				
550 Printing and Binding				35.01
Total Other Purchased Services				\$35.01
600 Supplies				
610 General Supplies	161.87	161.87		323.74
630 Food				240.00
650 Supplies & Fees – Technology Related				119.84
Total Supplies	\$161.87	\$161.87		\$683.58
800 Other Objects				
810 Dues and Fees				20.00
Total Other Objects				\$20.00
Total 2610 Supervision of Operation and Maintenance of Plant Services	\$161.87	\$161.87		\$114,647.97

General Fund (10)

	<u>Elementary</u>	<u>Secondary</u>	<u>Federal</u>	<u>Total</u>
2611 Supervision of Operation and Maintenance of Plant Services – Head of Component				
100 Personnel Services – Salaries				
100 Personnel Services – Salaries				44,970.10
Total Personnel Services – Salaries				\$44,970.10
200 Personnel Services – Employee Benefits				
210 Group Insurance – Contracted Provider				34,922.96
220 Social Security Contributions				4,886.62
230 PSERS Retirement Contributions				29,090.43
Total Personnel Services – Employee Benefits				\$68,900.01
400 Purchased Property Services				
440 Rentals				39.27
Total Purchased Property Services				\$39.27
500 Other Purchased Services				
550 Printing and Binding				35.01
Total Other Purchased Services				\$35.01
600 Supplies				
610 General Supplies	161.87	161.87		323.74
630 Food				240.00
650 Supplies & Fees – Technology Related				119.84
Total Supplies	\$161.87	\$161.87		\$683.58
800 Other Objects				
810 Dues and Fees				20.00
Total Other Objects				\$20.00
Total 2611 Supervision of Operation and Maintenance of Plant Services – Head of Component	\$161.87	\$161.87		\$114,647.97

General Fund (10)

	<u>Elementary</u>	<u>Secondary</u>	<u>Federal</u>	<u>Total</u>
2620 Operation of Buildings Services				
100 Personnel Services – Salaries				
100 Personnel Services – Salaries				1,252,392.19
Total Personnel Services – Salaries				\$1,252,392.19
200 Personnel Services – Employee Benefits				
210 Group Insurance – Contracted Provider				194,285.48
220 Social Security Contributions				93,945.66
230 PSERS Retirement Contributions				399,605.23
260 Workers' Compensation				11,840.36
Total Personnel Services – Employee Benefits				\$699,676.73
300 Purchased Professional and Technical Services				
330 Other Professional Services				48,397.65
Total Purchased Professional and Technical Services				\$48,397.65
400 Purchased Property Services				
410 Cleaning Services				38,180.58
420 Utility Services				119,651.68
430 Repairs and Maintenance Services				360,283.32
440 Rentals				9,410.39
450 Construction Services				12,554.00
460 Extermination Services				10,350.46
490 Other Purchased Property Services				45,868.68
Total Purchased Property Services				\$596,299.11
500 Other Purchased Services				
523 General Property and Liability Insurance				147,397.90
529 Other Insurance				10,396.00
530 Communications				62,306.36
Total Other Purchased Services				\$220,100.26
600 Supplies				
610 General Supplies	113,593.42	148,429.67		262,023.09
620 Energy				682,989.83
650 Supplies & Fees – Technology Related				21,876.45
Total Supplies	\$113,593.42	\$148,429.67		\$966,889.37
700 Property				
756 Capitalized Technology Equipment – Original				17,660.00
762 Capitalized Equipment - Replacement				56,803.00
Total Property				\$74,463.00
800 Other Objects				
810 Dues and Fees				2,010.00
Total Other Objects				\$2,010.00
Total 2620 Operation of Buildings Services	\$113,593.42	\$148,429.67		\$3,860,228.31

General Fund (10)

	<u>Elementary</u>	<u>Secondary</u>	<u>Federal</u>	<u>Total</u>
2630 Care and Upkeep of Grounds Services				
100 Personnel Services – Salaries				
100 Personnel Services – Salaries				224,902.00
Total Personnel Services – Salaries				\$224,902.00
200 Personnel Services – Employee Benefits				
210 Group Insurance – Contracted Provider				33,389.54
220 Social Security Contributions				16,627.10
230 PSERS Retirement Contributions				74,825.81
Total Personnel Services – Employee Benefits				\$124,842.45
400 Purchased Property Services				
430 Repairs and Maintenance Services				54,071.92
440 Rentals				3,442.50
Total Purchased Property Services				\$57,514.42
600 Supplies				
610 General Supplies	19,849.90	15,220.41		35,070.31
Total Supplies	\$19,849.90	\$15,220.41		\$35,070.31
800 Other Objects				
810 Dues and Fees				35.00
Total Other Objects				\$35.00
Total 2630 Care and Upkeep of Grounds Services	\$19,849.90	\$15,220.41		\$442,364.18

General Fund (10)

	<u>Elementary</u>	<u>Secondary</u>	<u>Federal</u>	<u>Total</u>
2660 Safety and Security Services				
100 Personnel Services – Salaries				
100 Personnel Services – Salaries				192,156.92
Total Personnel Services – Salaries				\$192,156.92
200 Personnel Services – Employee Benefits				
210 Group Insurance – Contracted Provider				491.52
220 Social Security Contributions				14,725.32
230 PSERS Retirement Contributions				65,333.35
299 All Other Employee Benefits				1,424.96
Total Personnel Services – Employee Benefits				\$81,975.15
500 Other Purchased Services				
550 Printing and Binding				2,015.13
580 Travel				216.15
Total Other Purchased Services				\$2,231.28
600 Supplies				
610 General Supplies	45,571.44	45,571.44		91,142.88
630 Food				239.29
650 Supplies & Fees – Technology Related				12,254.00
Total Supplies	\$45,571.44	\$45,571.44		\$103,636.17
Total 2660 Safety and Security Services	\$45,571.44	\$45,571.44		\$379,999.52

General Fund (10)

	<u>Elementary</u>	<u>Secondary</u>	<u>Federal</u>	<u>Total</u>
2700 Student Transportation Services				
100 Personnel Services – Salaries				
100 Personnel Services – Salaries				1,352,371.99
Total Personnel Services – Salaries				\$1,352,371.99
200 Personnel Services – Employee Benefits				
210 Group Insurance – Contracted Provider				75,387.34
220 Social Security Contributions				102,949.74
230 PSERS Retirement Contributions				439,746.04
260 Workers' Compensation				11,982.13
Total Personnel Services – Employee Benefits				\$630,065.25
300 Purchased Professional and Technical Services				
330 Other Professional Services				14,066.30
340 Technical Services				50,261.00
Total Purchased Professional and Technical Services				\$64,327.30
400 Purchased Property Services				
410 Cleaning Services				4,876.42
430 Repairs and Maintenance Services				116,780.91
440 Rentals				209.37
Total Purchased Property Services				\$121,866.70
500 Other Purchased Services				
513 Contracted Carriers				7,045.80
516 Student Transportation Services From the IU				159,126.75
522 Automotive Liability Insurance				53,403.00
530 Communications				19.13
550 Printing and Binding				74.73
Total Other Purchased Services				\$219,669.41
600 Supplies				
610 General Supplies				232,063.81
620 Energy				251,876.09
630 Food				423.00
650 Supplies & Fees – Technology Related				2,806.45
Total Supplies				\$487,169.35
700 Property				
762 Capitalized Equipment - Replacement				251,978.00
Total Property				\$251,978.00
800 Other Objects				
810 Dues and Fees				1,170.77
Total Other Objects				\$1,170.77
Total 2700 Student Transportation Services				\$3,128,618.77

General Fund (10)

	<u>Elementary</u>	<u>Secondary</u>	<u>Federal</u>	<u>Total</u>
2710 Supervision of Student Transportation Services				
100 <u>Personnel Services – Salaries</u>				
100 Personnel Services – Salaries				114,696.55
Total Personnel Services – Salaries				\$114,696.55
200 <u>Personnel Services – Employee Benefits</u>				
210 Group Insurance – Contracted Provider				28,110.98
220 Social Security Contributions				8,700.96
230 PSERS Retirement Contributions				39,650.21
Total Personnel Services – Employee Benefits				\$76,462.15
300 <u>Purchased Professional and Technical Services</u>				
330 Other Professional Services				10,815.58
Total Purchased Professional and Technical Services				\$10,815.58
400 <u>Purchased Property Services</u>				
440 Rentals				160.98
Total Purchased Property Services				\$160.98
500 <u>Other Purchased Services</u>				
550 Printing and Binding				74.73
Total Other Purchased Services				\$74.73
600 <u>Supplies</u>				
610 General Supplies				546.03
650 Supplies & Fees – Technology Related				421.44
Total Supplies				\$967.47
Total 2710 Supervision of Student Transportation Services				\$203,177.46

General Fund (10)

2711 Supervision of Student Transportation Services – Head of Component	<u>Elementary</u>	<u>Secondary</u>	<u>Federal</u>	<u>Total</u>
100 Personnel Services – Salaries				
100 Personnel Services – Salaries				114,696.55
Total Personnel Services – Salaries				\$114,696.55
200 Personnel Services – Employee Benefits				
210 Group Insurance – Contracted Provider				28,110.98
220 Social Security Contributions				8,700.96
230 PSERS Retirement Contributions				39,650.21
Total Personnel Services – Employee Benefits				\$76,462.15
300 Purchased Professional and Technical Services				
330 Other Professional Services				10,815.58
Total Purchased Professional and Technical Services				\$10,815.58
400 Purchased Property Services				
440 Rentals				160.98
Total Purchased Property Services				\$160.98
500 Other Purchased Services				
550 Printing and Binding				74.73
Total Other Purchased Services				\$74.73
600 Supplies				
610 General Supplies				546.03
650 Supplies & Fees – Technology Related				421.44
Total Supplies				\$967.47
Total 2711 Supervision of Student Transportation Services – Head of Component				\$203,177.46

General Fund (10)

	<u>Elementary</u>	<u>Secondary</u>	<u>Federal</u>	<u>Total</u>
2720 Vehicle Operation Services				
100 Personnel Services – Salaries				
100 Personnel Services – Salaries				985,519.30
Total Personnel Services – Salaries				\$985,519.30
200 Personnel Services – Employee Benefits				
210 Group Insurance – Contracted Provider				559.60
220 Social Security Contributions				75,371.86
230 PSERS Retirement Contributions				314,755.98
260 Workers' Compensation				10,979.18
Total Personnel Services – Employee Benefits				\$401,666.62
300 Purchased Professional and Technical Services				
340 Technical Services				50,261.00
Total Purchased Professional and Technical Services				\$50,261.00
500 Other Purchased Services				
513 Contracted Carriers				5,417.52
516 Student Transportation Services From the IU				159,126.75
522 Automotive Liability Insurance				41,061.57
Total Other Purchased Services				\$205,605.84
600 Supplies				
630 Food				423.00
650 Supplies & Fees – Technology Related				1,286.01
Total Supplies				\$1,709.01
700 Property				
762 Capitalized Equipment - Replacement				251,978.00
Total Property				\$251,978.00
800 Other Objects				
810 Dues and Fees				1,170.77
Total Other Objects				\$1,170.77
Total 2720 Vehicle Operation Services				\$1,897,910.54

General Fund (10)

	<u>Elementary</u>	<u>Secondary</u>	<u>Federal</u>	<u>Total</u>
2740 Vehicle Servicing and Maintenance Services				
100 Personnel Services – Salaries				
100 Personnel Services – Salaries				129,847.22
Total Personnel Services – Salaries				\$129,847.22
200 Personnel Services – Employee Benefits				
210 Group Insurance – Contracted Provider				46,374.76
220 Social Security Contributions				9,520.28
230 PSERS Retirement Contributions				43,754.80
Total Personnel Services – Employee Benefits				\$99,649.84
400 Purchased Property Services				
410 Cleaning Services				4,876.42
430 Repairs and Maintenance Services				89,792.84
Total Purchased Property Services				\$94,669.26
500 Other Purchased Services				
530 Communications				19.13
Total Other Purchased Services				\$19.13
600 Supplies				
610 General Supplies				177,887.83
620 Energy				193,667.53
650 Supplies & Fees – Technology Related				1,099.00
Total Supplies				\$372,654.36
Total 2740 Vehicle Servicing and Maintenance Services				\$696,839.81

General Fund (10)

	<u>Elementary</u>	<u>Secondary</u>	<u>Federal</u>	<u>Total</u>
2750 Nonpublic Transportation				
100 Personnel Services – Salaries				
100 Personnel Services – Salaries				122,308.92
Total Personnel Services – Salaries				\$122,308.92
200 Personnel Services – Employee Benefits				
210 Group Insurance – Contracted Provider				342.00
220 Social Security Contributions				9,356.64
230 PSERS Retirement Contributions				41,585.05
260 Workers' Compensation				1,002.95
Total Personnel Services – Employee Benefits				\$52,286.64
300 Purchased Professional and Technical Services				
330 Other Professional Services				3,250.72
Total Purchased Professional and Technical Services				\$3,250.72
400 Purchased Property Services				
430 Repairs and Maintenance Services				26,988.07
440 Rentals				48.39
Total Purchased Property Services				\$27,036.46
500 Other Purchased Services				
513 Contracted Carriers				1,628.28
522 Automotive Liability Insurance				12,341.43
Total Other Purchased Services				\$13,969.71
600 Supplies				
610 General Supplies				53,629.95
620 Energy				58,208.56
Total Supplies				\$111,838.51
Total 2750 Nonpublic Transportation				\$330,690.96

General Fund (10)

2800 Support Services – Central

Elementary

Secondary

Federal

Total

100 Personnel Services – Salaries

100 Personnel Services – Salaries 469,730.97

Total Personnel Services – Salaries \$469,730.97

200 Personnel Services – Employee Benefits

210 Group Insurance – Contracted Provider 88,068.98

220 Social Security Contributions 35,225.27

230 PSERS Retirement Contributions 156,333.85

240 Tuition Reimbursement 15,243.90

299 All Other Employee Benefits 7,213.69

Total Personnel Services – Employee Benefits \$302,085.69

300 Purchased Professional and Technical Services

330 Other Professional Services 528.00

360 Employee Training and Development Services 10,566.25

Total Purchased Professional and Technical Services \$11,094.25

400 Purchased Property Services

430 Repairs and Maintenance Services 9,177.00

Total Purchased Property Services \$9,177.00

500 Other Purchased Services

530 Communications 1,227.58

549 Other Advertising/Public Relations 34,007.79

550 Printing and Binding 413.63

580 Travel 6,569.04

Total Other Purchased Services \$42,218.04

600 Supplies

610 General Supplies 3,192.67

630 Food 4,271.50

640 Books and Periodicals 100.00

650 Supplies & Fees – Technology Related 137,001.69

Total Supplies \$144,565.86

800 Other Objects

810 Dues and Fees 1,708.95

Total Other Objects \$1,708.95

Total 2800 Support Services – Central \$980,580.76

General Fund (10)

	<u>Elementary</u>	<u>Secondary</u>	<u>Federal</u>	<u>Total</u>
2810 Planning, Research, Development and Evaluation Services				
100 Personnel Services – Salaries				
100 Personnel Services – Salaries				269,134.00
Total Personnel Services – Salaries				\$269,134.00
200 Personnel Services – Employee Benefits				
210 Group Insurance – Contracted Provider				59,853.39
220 Social Security Contributions				19,959.68
230 PSERS Retirement Contributions				88,812.27
Total Personnel Services – Employee Benefits				\$168,625.34
300 Purchased Professional and Technical Services				
330 Other Professional Services				528.00
Total Purchased Professional and Technical Services				\$528.00
500 Other Purchased Services				
580 Travel				141.48
Total Other Purchased Services				\$141.48
600 Supplies				
650 Supplies & Fees – Technology Related				92.45
Total Supplies				\$92.45
Total 2810 Planning, Research, Development and Evaluation Services				\$438,521.27

General Fund (10)

2820 Information Services

Elementary

Secondary

Federal

Total

400 Purchased Property Services

430 Repairs and Maintenance Services

9,177.00

Total Purchased Property Services

\$9,177.00

600 Supplies

650 Supplies & Fees – Technology Related

111,801.45

Total Supplies

\$111,801.45

Total 2820 Information Services

\$120,978.45

General Fund (10)

2829 Other Information Services

Elementary

Secondary

Federal

Total

400 Purchased Property Services

430 Repairs and Maintenance Services

9,177.00

Total Purchased Property Services

\$9,177.00

600 Supplies

650 Supplies & Fees – Technology Related

111,801.45

Total Supplies

\$111,801.45

Total 2829 Other Information Services

\$120,978.45

General Fund (10)

2830 Staff Services

	<u>Elementary</u>	<u>Secondary</u>	<u>Federal</u>	<u>Total</u>
100 Personnel Services – Salaries				
100 Personnel Services – Salaries				200,596.97
Total Personnel Services – Salaries				\$200,596.97
200 Personnel Services – Employee Benefits				
210 Group Insurance – Contracted Provider				28,215.59
220 Social Security Contributions				15,265.59
230 PSERS Retirement Contributions				67,521.58
240 Tuition Reimbursement				15,243.90
299 All Other Employee Benefits				7,213.69
Total Personnel Services – Employee Benefits				\$133,460.35
300 Purchased Professional and Technical Services				
360 Employee Training and Development Services				10,566.25
Total Purchased Professional and Technical Services				\$10,566.25
500 Other Purchased Services				
530 Communications				1,227.58
549 Other Advertising/Public Relations				34,007.79
550 Printing and Binding				413.63
580 Travel				6,427.56
Total Other Purchased Services				\$42,076.56
600 Supplies				
610 General Supplies				3,192.67
630 Food				4,271.50
640 Books and Periodicals				100.00
650 Supplies & Fees – Technology Related				25,107.79
Total Supplies				\$32,671.96
800 Other Objects				
810 Dues and Fees				1,708.95
Total Other Objects				\$1,708.95
Total 2830 Staff Services				\$421,081.04

General Fund (10)

2832 Recruitment and Placement Services	<u>Elementary</u>	<u>Secondary</u>	<u>Federal</u>	<u>Total</u>
100 Personnel Services – Salaries				
100 Personnel Services – Salaries				200,596.97
Total Personnel Services – Salaries				\$200,596.97
200 Personnel Services – Employee Benefits				
210 Group Insurance – Contracted Provider				28,215.59
220 Social Security Contributions				15,265.59
230 PSERS Retirement Contributions				67,521.58
299 All Other Employee Benefits				7,213.69
Total Personnel Services – Employee Benefits				\$118,216.45
500 Other Purchased Services				
530 Communications				1,227.58
549 Other Advertising/Public Relations				34,007.79
550 Printing and Binding				413.63
580 Travel				406.77
Total Other Purchased Services				\$36,055.77
600 Supplies				
610 General Supplies				3,192.67
630 Food				4,271.50
640 Books and Periodicals				100.00
650 Supplies & Fees – Technology Related				25,107.79
Total Supplies				\$32,671.96
800 Other Objects				
810 Dues and Fees				1,708.95
Total Other Objects				\$1,708.95
Total 2832 Recruitment and Placement Services				\$389,250.10

General Fund (10)

	<u>Elementary</u>	<u>Secondary</u>	<u>Federal</u>	<u>Total</u>
2834 Staff Development Services – Non-Instructional, Certified Staff Only				
200 Personnel Services – Employee Benefits				
240 Tuition Reimbursement				7,621.90
Total Personnel Services – Employee Benefits				\$7,621.90
300 Purchased Professional and Technical Services				
360 Employee Training and Development Services				6,851.50
Total Purchased Professional and Technical Services				\$6,851.50
500 Other Purchased Services				
580 Travel				3,810.55
Total Other Purchased Services				\$3,810.55
Total 2834 Staff Development Services – Non-Instructional, Certified Staff Only				\$18,283.95

General Fund (10)

	<u>Elementary</u>	<u>Secondary</u>	<u>Federal</u>	<u>Total</u>
2836 Staff Development Services – Non-Instructional, Non-Certified Staff Only				
200 Personnel Services – Employee Benefits				
240 Tuition Reimbursement				7,622.00
Total Personnel Services – Employee Benefits				\$7,622.00
300 Purchased Professional and Technical Services				
360 Employee Training and Development Services				3,714.75
Total Purchased Professional and Technical Services				\$3,714.75
500 Other Purchased Services				
580 Travel				2,210.24
Total Other Purchased Services				\$2,210.24
Total 2836 Staff Development Services – Non-Instructional, Non-Certified Staff Only				\$13,546.99

General Fund (10)

2900 Other Support Services

Elementary

Secondary

Federal

Total

500 Other Purchased Services

595 IU Payments By Withholding

41,784.26

Total Other Purchased Services

\$41,784.26

Total 2900 Other Support Services

\$41,784.26

General Fund (10)

2910 Support Services Not Listed Elsewhere In the 2000 Series

Elementary

Secondary

Federal

Total

500 Other Purchased Services

595 IU Payments By Withholding

41,784.26

Total Other Purchased Services

\$41,784.26

Total 2910 Support Services Not Listed Elsewhere In the 2000 Series

\$41,784.26

General Fund (10)

3000 Operation of Non-Instructional Services

Total

100 Personnel Services – Salaries

100 Personnel Services – Salaries 577,848.32

Total Personnel Services – Salaries \$577,848.32

200 Personnel Services – Employee Benefits

210 Group Insurance – Contracted Provider 7,239.21

220 Social Security Contributions 44,041.21

230 PSERS Retirement Contributions 188,795.80

260 Workers' Compensation 3,672.62

299 All Other Employee Benefits 6,101.60

Total Personnel Services – Employee Benefits \$249,850.44

300 Purchased Professional and Technical Services

330 Other Professional Services 5,575.00

350 Security / Safety Services 3,500.00

390 Other Purchased Professional and Technical Services 51,424.00

Total Purchased Professional and Technical Services \$60,499.00

400 Purchased Property Services

410 Cleaning Services 24,045.91

430 Repairs and Maintenance Services 2,951.00

440 Rentals 2,164.71

Total Purchased Property Services \$29,161.62

500 Other Purchased Services

520 Insurance – General 24,243.00

580 Travel 10,399.83

Total Other Purchased Services \$34,642.83

600 Supplies

610 General Supplies 150,079.44

630 Food 172.18

Total Supplies \$150,251.62

700 Property

762 Capitalized Equipment - Replacement 802.05

Total Property \$802.05

800 Other Objects

810 Dues and Fees 27,119.00

860 Grants To Municipal and Community Service Organizations 5,000.00

890 Miscellaneous Expenditures 23,528.99

Total Other Objects \$55,647.99

Total 3000 Operation of Non-Instructional Services \$1,158,703.87

General Fund (10)

3200 Student Activities

	<u>Elementary</u>	<u>Secondary</u>	<u>Federal</u>	<u>Total</u>
100 Personnel Services – Salaries				
100 Personnel Services – Salaries				577,848.32
Total Personnel Services – Salaries				\$577,848.32
200 Personnel Services – Employee Benefits				
210 Group Insurance – Contracted Provider				7,239.21
220 Social Security Contributions				44,041.21
230 PSERS Retirement Contributions				188,795.80
260 Workers' Compensation				3,672.62
299 All Other Employee Benefits				6,101.60
Total Personnel Services – Employee Benefits				\$249,850.44
300 Purchased Professional and Technical Services				
330 Other Professional Services				5,575.00
350 Security / Safety Services				3,500.00
390 Other Purchased Professional and Technical Services				51,424.00
Total Purchased Professional and Technical Services				\$60,499.00
400 Purchased Property Services				
410 Cleaning Services				24,045.91
430 Repairs and Maintenance Services				2,951.00
440 Rentals				2,164.71
Total Purchased Property Services				\$29,161.62
500 Other Purchased Services				
520 Insurance – General				24,243.00
580 Travel				10,399.83
Total Other Purchased Services				\$34,642.83
600 Supplies				
610 General Supplies				150,079.44
630 Food				172.18
Total Supplies				\$150,251.62
700 Property				
762 Capitalized Equipment - Replacement				802.05
Total Property				\$802.05
800 Other Objects				
810 Dues and Fees				27,119.00
Total Other Objects				\$27,119.00
Total 3200 Student Activities				\$1,130,174.88

LEA : 121394603 Northwestern Lehigh SD

Printed 11/26/2024 9:37:01 AM

General Fund (10)

3300 Community Services

Elementary

Secondary

Federal

Total

800 Other Objects

860 Grants To Municipal and Community Service Organizations

5,000.00

890 Miscellaneous Expenditures

4,692.25

Total Other Objects

\$9,692.25

Total 3300 Community Services

\$9,692.25

General Fund (10)

3400 Scholarships and Awards

Elementary

Secondary

Federal

Total

800 Other Objects

890 Miscellaneous Expenditures

18,836.74

Total Other Objects

\$18,836.74

Total 3400 Scholarships and Awards

\$18,836.74

General Fund (10)

5000 Other Expenditures and Financing Uses

Total

800 Other Objects

830 Interest 1,475,769.93

Total Other Objects \$1,475,769.93

900 Other Uses of Funds

910 Redemption of Principal 3,126,551.25

Total Other Uses of Funds \$3,126,551.25

Total 5000 Other Expenditures and Financing Uses \$4,602,321.18

General Fund (10)

	<u>Elementary</u>	<u>Secondary</u>	<u>Federal</u>	<u>Total</u>
5100 Debt Service / Other Expenditures and Financing Uses				
800 Other Objects				
830 Interest				1,475,769.93
Total Other Objects				\$1,475,769.93
900 Other Uses of Funds				
910 Redemption of Principal				3,126,551.25
Total Other Uses of Funds				\$3,126,551.25
Total 5100 Debt Service / Other Expenditures and Financing Uses				\$4,602,321.18

General Fund (10)

	<u>Elementary</u>	<u>Secondary</u>	<u>Federal</u>	<u>Total</u>
5110 Debt Service				
800 Other Objects				
830 Interest				1,475,769.93
Total Other Objects				\$1,475,769.93
900 Other Uses of Funds				
910 Redemption of Principal				3,117,000.00
Total Other Uses of Funds				\$3,117,000.00
Total 5110 Debt Service				\$4,592,769.93

General Fund (10)

5140 Leases and Other Right-to-Use Arrangements

Elementary

Secondary

Federal

Total

900 Other Uses of Funds

910 Redemption of Principal

9,551.25

Total Other Uses of Funds

\$9,551.25

Total 5140 Leases and Other Right-to-Use Arrangements

\$9,551.25

Student Sponsored Activity Fund (21)

3000 Operation of Non-Instructional Services	<u>Total</u>
300 <u>Purchased Professional and Technical Services</u>	
330 Other Professional Services	11,785.50
Total Purchased Professional and Technical Services	\$11,785.50
400 <u>Purchased Property Services</u>	
490 Other Purchased Property Services	2,778.00
Total Purchased Property Services	\$2,778.00
500 <u>Other Purchased Services</u>	
599 Other Miscellaneous Purchased Services	35,752.14
Total Other Purchased Services	\$35,752.14
600 <u>Supplies</u>	
610 General Supplies	45,450.83
630 Food	1,825.67
Total Supplies	\$47,276.50
800 <u>Other Objects</u>	
890 Miscellaneous Expenditures	1,532.32
Total Other Objects	\$1,532.32
Total 3000 Operation of Non-Instructional Services	\$99,124.46

Student Sponsored Activity Fund (21)

	<u>Elementary</u>	<u>Secondary</u>	<u>Federal</u>	<u>Total</u>
3200 Student Activities				
300 <u>Purchased Professional and Technical Services</u>				
330 Other Professional Services				11,785.50
Total Purchased Professional and Technical Services				\$11,785.50
400 <u>Purchased Property Services</u>				
490 Other Purchased Property Services				2,778.00
Total Purchased Property Services				\$2,778.00
500 <u>Other Purchased Services</u>				
599 Other Miscellaneous Purchased Services				35,752.14
Total Other Purchased Services				\$35,752.14
600 <u>Supplies</u>				
610 General Supplies				45,450.83
630 Food				1,825.67
Total Supplies				\$47,276.50
800 <u>Other Objects</u>				
890 Miscellaneous Expenditures				1,532.32
Total Other Objects				\$1,532.32
Total 3200 Student Activities				\$99,124.46

LEA : 121394603 Northwestern Lehigh SD

Printed 11/26/2024 9:36:58 AM

Capital Reserve Fund - § 1431 (32)

2000 Support Services

Total

700 Property

762 Capitalized Equipment - Replacement

128,285.00

Total Property

\$128,285.00

Total 2000 Support Services

\$128,285.00

Capital Reserve Fund - § 1431 (32)

2700 Student Transportation Services

Elementary

Secondary

Federal

Total

700 Property

762 Capitalized Equipment - Replacement

128,285.00

Total Property				\$128,285.00
Total 2700 Student Transportation Services				\$128,285.00

LEA : 121394603 Northwestern Lehigh SD

Printed 11/26/2024 9:36:58 AM

Capital Reserve Fund - § 1431 (32)

2720 Vehicle Operation Services

Elementary

Secondary

Federal

Total

700 Property

762 Capitalized Equipment - Replacement

128,285.00

Total Property

\$128,285.00

Total 2720 Vehicle Operation Services

\$128,285.00

Capital Reserve Fund - § 1431 (32)

4000 Facilities Acquisition, Construction and Improvement Services

Total

400 Purchased Property Services

430 Repairs and Maintenance Services

141,318.23

Total Purchased Property Services

\$141,318.23

Total 4000 Facilities Acquisition, Construction and Improvement Services

\$141,318.23

LEA : 121394603 Northwestern Lehigh SD

Printed 11/26/2024 9:37:09 AM

Capital Reserve Fund - § 1431 (32)

4600 Existing Building Improvement Services

Elementary

Secondary

Federal

Total

400 Purchased Property Services

430 Repairs and Maintenance Services

141,318.23

Total Purchased Property Services

\$141,318.23

Total 4600 Existing Building Improvement Services

\$141,318.23

Other Capital Projects Fund (39)

4000 Facilities Acquisition, Construction and Improvement Services

Total

300 Purchased Professional and Technical Services

330 Other Professional Services

5,722,166.47

Total Purchased Professional and Technical Services

\$5,722,166.47

400 Purchased Property Services

450 Construction Services

1,441,778.57

Total Purchased Property Services

\$1,441,778.57

600 Supplies

610 General Supplies

102,649.00

Total Supplies

\$102,649.00

700 Property

762 Capitalized Equipment - Replacement

142,529.00

Total Property

\$142,529.00

Total 4000 Facilities Acquisition, Construction and Improvement Services

\$7,409,123.04

Other Capital Projects Fund (39)

	<u>Elementary</u>	<u>Secondary</u>	<u>Federal</u>	<u>Total</u>
4600 Existing Building Improvement Services				
300 <u>Purchased Professional and Technical Services</u>				
330 Other Professional Services				5,722,166.47
Total Purchased Professional and Technical Services				\$5,722,166.47
400 <u>Purchased Property Services</u>				
450 Construction Services				1,441,778.57
Total Purchased Property Services				\$1,441,778.57
600 <u>Supplies</u>				
610 General Supplies				102,649.00
Total Supplies				\$102,649.00
700 <u>Property</u>				
762 Capitalized Equipment - Replacement				142,529.00
Total Property				\$142,529.00
Total 4600 Existing Building Improvement Services				\$7,409,123.04

	<u>General Fund(10)</u>	<u>Student Sponsored Activity Fund(21)</u>	<u>Public Purpose Trust(27)</u>	<u>Other Compt Approved (28)</u>	<u>Athletic / Activity(29)</u>
1000 Instruction					
1100 Regular Programs - Elementary / Secondary	18,816,073.27				
1200 Special Programs - Elementary / Secondary	7,060,227.45				
1300 Vocational Education	1,698,570.70				
1400 Other Instructional Programs - Elementary / Secondary	64.36				
1600 Adult Education Programs	232,799.00				
Total Instruction	\$27,807,734.78				
2000 Support Services					
2100 Support Services - Students	1,707,312.16				
2200 Support Services - Instructional Staff	1,076,003.50				
2300 Support Services - Administration	3,015,136.55				
2400 Support Services - Pupil Health	434,676.59				
2500 Support Services - Business	836,436.35				
2600 Operation and Maintenance of Plant Services	4,797,239.98				
2700 Student Transportation Services	3,128,618.77				
2800 Support Services - Central	980,580.76				
2900 Other Support Services	41,784.26				
Total Support Services	\$16,017,788.92				
3000 Operation of Non-Instructional Services					
3200 Student Activities	1,130,174.88	99,124.46			
3300 Community Services	9,692.25				
3400 Scholarships and Awards	18,836.74				
Total Operation of Non-Instructional Services	\$1,158,703.87	\$99,124.46			
4000 Facilities Acquisition, Construction and Improvement Services					
4600 Existing Building Improvement Services					
Total Facilities Acquisition, Construction and Improvement Services					
5000 Other Expenditures and Financing Uses					
5100 Debt Service / Other Expenditures and Financing Uses	4,602,321.18				
Total Other Expenditures and Financing Uses	\$4,602,321.18				
TOTAL ACTUAL EXPENDITURES & OTHER FINANCING USES	\$49,586,548.75	\$99,124.46			

	<u>Capital Reserve (690. 1850)(31)</u>	<u>Capital Reserve (1431)(32)</u>	<u>Other Capital Projects Fund(39)</u>	<u>Debt Service(40)</u>	<u>Permanent(90)</u>
1000 Instruction					
1100 Regular Programs - Elementary / Secondary					
1200 Special Programs - Elementary / Secondary					
1300 Vocational Education					
1400 Other Instructional Programs - Elementary / Secondary					
1600 Adult Education Programs					
Total Instruction					
2000 Support Services					
2100 Support Services - Students					
2200 Support Services - Instructional Staff					
2300 Support Services - Administration					
2400 Support Services - Pupil Health					
2500 Support Services - Business					
2600 Operation and Maintenance of Plant Services					
2700 Student Transportation Services			128,285.00		
2800 Support Services - Central					
2900 Other Support Services					
Total Support Services			\$128,285.00		
3000 Operation of Non-Instructional Services					
3200 Student Activities					
3300 Community Services					
3400 Scholarships and Awards					
Total Operation of Non-Instructional Services					
4000 Facilities Acquisition, Construction and Improvement Services					
4600 Existing Building Improvement Services			141,318.23	7,409,123.04	
Total Facilities Acquisition, Construction and Improvement Services			\$141,318.23	\$7,409,123.04	
5000 Other Expenditures and Financing Uses					
5100 Debt Service / Other Expenditures and Financing Uses					
Total Other Expenditures and Financing Uses					
TOTAL ACTUAL EXPENDITURES & OTHER FINANCING USES			\$269,603.23	\$7,409,123.04	

Total

1000 Instruction	
1100 Regular Programs - Elementary / Secondary	18,816,073.27
1200 Special Programs - Elementary / Secondary	7,060,227.45
1300 Vocational Education	1,698,570.70
1400 Other Instructional Programs - Elementary / Secondary	64.36
1600 Adult Education Programs	232,799.00
Total Instruction	\$27,807,734.78
2000 Support Services	
2100 Support Services - Students	1,707,312.16
2200 Support Services - Instructional Staff	1,076,003.50
2300 Support Services - Administration	3,015,136.55
2400 Support Services - Pupil Health	434,676.59
2500 Support Services - Business	836,436.35
2600 Operation and Maintenance of Plant Services	4,797,239.98
2700 Student Transportation Services	3,256,903.77
2800 Support Services - Central	980,580.76
2900 Other Support Services	41,784.26
Total Support Services	\$16,146,073.92
3000 Operation of Non-Instructional Services	
3200 Student Activities	1,229,299.34
3300 Community Services	9,692.25
3400 Scholarships and Awards	18,836.74
Total Operation of Non-Instructional Services	\$1,257,828.33
4000 Facilities Acquisition, Construction and Improvement Services	
4600 Existing Building Improvement Services	7,550,441.27
Total Facilities Acquisition, Construction and Improvement Services	\$7,550,441.27
5000 Other Expenditures and Financing Uses	
5100 Debt Service / Other Expenditures and Financing Uses	4,602,321.18
Total Other Expenditures and Financing Uses	\$4,602,321.18
TOTAL ACTUAL EXPENDITURES & OTHER FINANCING USES	\$57,364,399.48

PSERS Salary Data (Salary Data should relate to the General Fund only)

Amount Description	Amount
Total Salary Base for salaries subject to PSERS withholding	20,839,341.66
Total Federally Funded salaries subject to PSERS withholding	764,684.82
	<hr/>

Title I Expenditure Data

Amount Description	Amount
Expenditures Funded with Current Title I Funds	274,942.00
Total Title I Expenditure Data	\$274,942.00
	<hr/>

Title IV Revenue Data

Amount Description	Amount
Revenue from Title IV-A-1: Student Support and Academic Enrichment Grants	22,016.00
	<hr/>

1.	<u>Current Special Education Expenditures within Function 1000</u> See list of exclusions in the note below.	4,532,413.07
2.	<u>Current Special Education Expenditures within Function 2000</u> See list of exclusions in the note below.	3,177,540.88
2A.	<u>Current Special Education Expenditures within Sub-Function 2100</u> This data should also be included in line 2 above. See list of exclusions in the note below.	347,719.60
2B.	<u>Current Special Education Expenditures within Sub-Function 2200</u> This data should also be included in line 2 above. See list of exclusions in the note below.	219,144.17
2C.	<u>Current Special Education Expenditures within Sub-Function 2700</u> This data should also be included in line 2 above. See list of exclusions in the note below.	518,520.67
3.	<u>Current Special Education Expenditures within Sub-Function 3100</u> See list of exclusions in the note below.	
4.	<u>Current Special Education Expenditures within Sub-Function 3200</u> See list of exclusions in the note below.	230,013.63

Note: The Current Special Education Expenditure amounts for each line should be calculated as follows:

- * Include the total expenditures for special education costs from all governmental funds and the food service fund 51 for the function/sub-function requested
- * Exclude data from sub-functions: 1243,1450,1500,1600,1807,2280,2450,2750,2990
- * Exclude data from objects: 322,511,512,516,561,562,564,566,592,593,594,595,596,597,700,830,899

Benefits for Staff Relative to Collective Bargaining Agreements

	OBJECT	COVERED	NOT COVERED	TOTAL
10 General Fund	No Self Insurance data to report			
	211 Medical Insurance	2,340,356.28	330,828.84	2,671,185.12
	212 Dental Insurance	90,054.12	29,753.84	119,807.96
	215 Eye Care Insurance	6,744.16	5,634.32	12,378.48
	216 Prescription Insurance	563,120.16	205,159.04	768,279.20
	271 Self-Insurance Medical Benefits			
	272 Self-Insurance Dental Benefits			
	275 Self-Insurance Eye Care Benefits			
	276 Self-Insurance Prescription Benefits			
	FUND TOTAL		\$3,000,274.72	\$571,376.04
50 Enterprise Fund	No Self Insurance data to report			
	211 Medical Insurance			
	212 Dental Insurance			
	215 Eye Care Insurance			
	216 Prescription Insurance			
	271 Self-Insurance Medical Benefits			
	272 Self-Insurance Dental Benefits			
	275 Self-Insurance Eye Care Benefits			
	276 Self-Insurance Prescription Benefits			
	FUND TOTAL			
60 Internal Service Fund	No Self Insurance data to report			
	211 Medical Insurance			
	212 Dental Insurance			
	215 Eye Care Insurance			
	216 Prescription Insurance			
	271 Self-Insurance Medical Benefits			
	272 Self-Insurance Dental Benefits			
	275 Self-Insurance Eye Care Benefits			
	276 Self-Insurance Prescription Benefits			
	FUND TOTAL			
Total of All Funds		\$3,000,274.72	\$571,376.04	\$3,571,650.76

LEA : 121394603 Northwestern Lehigh SD

Printed 11/26/2024 9:37:39 AM

Function	Special Education (Prior Year)	Nonspecial Education (Prior Year)	Total (Prior Year)	Special Education (Current Year)	Nonspecial Education (Current Year)	Total (Current Year)
2120 Guidance Services	199,468.92	760,900.94	960,369.86	209,691.42	819,898.82	1,029,590.24
2140 Psychological Services	310,396.83	35,425.73	345,822.56	329,476.99	26,541.20	356,018.19
2150 Speech Pathology and Audiology Services						
2160 Social Work Services	25,857.30	98,636.12	124,493.42			
2260 Instruction and Curriculum Development Services	89,829.46	342,666.54	432,496.00		429,861.21	429,861.21
2350 Legal and Accounting Services	20,347.65	77,618.82	97,966.47	28,843.23	112,777.77	141,621.00
2420 Medical Services	77,430.56	295,369.25	372,799.81	88,480.51	345,961.08	434,441.59
2440 Nursing Services						
2700 Student Transportation Services	631,989.07	2,464,379.91	3,096,368.98	685,706.95	2,442,911.82	3,128,618.77
Total	\$1,355,319.79	\$4,074,997.31	\$5,430,317.10	\$1,342,199.10	\$4,177,951.90	\$5,520,151.00

(PRINCIPAL AMOUNTS ONLY)

GOVERNMENTAL FUNDS/ ACTIVITIES

	Short-Term Borrowing	General Obligation Bonds/Notes	Authority Building Obligations	Leases, Other Right to Use Arrangements	Extended Term Financing Agreements	Other Long Term Debt/Liabilities	OPEB, Comp Abs, Net Pension Liab	Total
1. Debt at Beginning of Fiscal Year		51,845,000.00					63,498,531.00	115,343,531.00
2. Additional Debt Incurred During Year				47,756.25			300,353.00	348,109.25
3. Retirements and Repayments		3,117,000.00		9,551.25			918,566.00	4,045,117.25
4. Debt at End of Fiscal Year		48,728,000.00		38,205.00			62,880,318.00	111,646,523.00
5. Accreted Interest at End Of Fiscal Year								
6. Total Debt and Accreted Interest		48,728,000.00		38,205.00			62,880,318.00	111,646,523.00
7. Current Portion P&I - Due within 1 year		4,549,415.00		9,933.30				4,559,348.30
8. Interest Paid during current fiscal year		1,475,769.93						1,475,769.93

(PRINCIPAL AMOUNTS ONLY)

PROPRIETARY FUNDS

	Short-Term Borrowing	General Obligation Bonds/Notes	Authority Building Obligations	Leases, Other Right to Use Arrangements	Extended Term Financing Agreements	Other Long Term Debt/Liabilities	OPEB, Comp Abs, Net Pension Liab	Total
1. Debt at Beginning of Fiscal Year							1,044,260.00	1,044,260.00
2. Additional Debt Incurred During Year								
3. Retirements and Repayments							11,234.00	11,234.00
4. Debt at End of Fiscal Year							1,033,026.00	1,033,026.00
5. Accreted Interest at End Of Fiscal Year								
6. Total Debt and Accreted Interest							1,033,026.00	1,033,026.00
7. Current Portion P&I - Due within 1 year								
8. Interest Paid during current fiscal year								

Total Principal and Interest Payments Made by Your School - All Funds

Function	Fund		Principal (910)	Principal (920)	Interest (830)	Total (Principal +Interest)	Misc Other Uses (990)
5110	10	General Fund	3,117,000.00		1,475,769.93	4,592,769.93	
5110	20	Special Revenue Funds					
5110	30	Capital Projects Funds					
5110	40	Debt Service Fund					
5110	90	Permanent Fund					
5120	10	General Fund					
5120	20	Special Revenue Funds					
5120	30	Capital Projects Funds					
5120	40	Debt Service Fund					
5140	10	General Fund	9,551.25			9,551.25	
5140	20	Special Revenue Funds					
5140	30	Capital Projects Funds					
5140	40	Debt Service Fund					
5140	90	Permanent Fund					
Total Debt Payments - Governmental Funds			\$3,126,551.25		\$1,475,769.93	\$4,602,321.18	

Function	Fund		Principal (910)	Principal (920)	Interest (830)	Total (Principal +Interest)
5110	50	Enterprise Fund				
5110	60	Internal Service Fund				
5120	50	Enterprise Fund				
5120	60	Internal Service Fund				
5140	50	Enterprise Fund				
5140	60	Internal Service Fund				
Total Debt Payments - Proprietary Funds						

Debt Details
Governmental Funds/ Activities

Debt Category	Debt Issue Date (MM/YYYY)	Principal Amounts Only				Current Portion Due Within One Year (Principal and Interest)	Interest Paid During Fiscal Year
		Debt at Beginning of Fiscal Year	Additions	Reductions / Repayments	Debt at End of Fiscal Year		
General Obligation Bonds/Notes – CIB	07/2022	12,995,000.00		5,000.00	12,990,000.00	427,175.00	422,337.50
General Obligation Bonds/Notes – CIB	11/2021	5,755,000.00		25,000.00	5,730,000.00	119,545.00	94,957.50
General Obligation Bonds/Notes – CIB	10/2019	9,640,000.00		75,000.00	9,565,000.00	294,300.00	218,050.00
General Obligation Bonds/Notes – CIB	11/2018	5,995,000.00		505,000.00	5,490,000.00	693,280.00	193,430.00
General Obligation Bonds/Notes – CIB	12/2009	7,415,000.00		165,000.00	7,250,000.00	1,420,542.00	346,122.43
General Obligation Bonds/Notes – CIB	10/2007	1,100,000.00		1,100,000.00			3,586.00
General Obligation Bonds/Notes – CIB	6/2020	2,630,000.00		532,000.00	2,098,000.00	703,560.00	25,774.00
General Obligation Bonds/Notes – CIB	5/2019	6,315,000.00		710,000.00	5,605,000.00	891,013.00	171,512.50
Leases and Other Right to Use Arrangements			47,756.25	9,551.25	38,205.00	9,933.30	
Compensated Absences		618,422.00	155,250.00	55,690.00	717,982.00		
Net Pension Liability		57,740,810.00	252.00	792,508.00	56,948,554.00		
Other Post-Employment Benefits (OPEB)		5,139,299.00	144,851.00	70,368.00	5,213,782.00		
Totals for Debt Entered:		\$115,343,531.00	\$348,109.25	\$4,045,117.25	\$111,646,523.00	\$4,559,348.30	\$1,475,769.93

Bond Details
Proprietary Funds

Debt Category	Debt Issue Date (MM/YYYY)	Principal Amounts Only				Current Portion Due Within One Year (Principal and Interest)	Interest Paid During Fiscal Year
		Debt at Beginning of Fiscal Year	Additions	Reductions / Repayments	Debt at End of Fiscal Year		
Other Post-Employment Benefits (OPEB)		38,428.00		977.00	37,451.00		
Net Pension Liability		1,005,832.00		10,257.00	995,575.00		
Totals for Debt Entered:		\$1,044,260.00		\$11,234.00	\$1,033,026.00		

General Fund (10)

Section 1: Tuition/Purchased Services as Reported within Expenditure Detail

	Amount
Tuition Reported in General Fund Expenditures 1000-560	4,097,495.18
Purchased Services in General Fund Expenditures 1000-594 and 1000-597	839.44
Section 1 Total	\$4,098,334.62

Section 2: Tuition Paid to Institution Types During Fiscal Year

	Tuition Paid For Nonspecial Education	Tuition Paid For Special Education	Total
1 1306 Institutions			
2 Institutionalized Children's Programs			
3 Juveniles Incarcerated in Adult Facilities			
4 Residential Treatment Facilities			
5 Other Local Education Agencies		9,929.28	9,929.28
6 Brick and Mortar Charter Schools	930,006.18	334,525.92	1,264,532.10
7 Cyber Charter Schools	521,521.77	321,282.17	842,803.94
8 Career and Technology Centers	1,698,570.70		1,698,570.70
9 Approved Private Schools		50,236.16	50,236.16
10 PA Chartered Schools for the Deaf and Blind			
11 Private Residential Rehabilitative Institutions			
12 Juvenile Detention Centers			
13 Special Program Jointures			
14 Other Tuition Not Included Elsewhere In This Section	231,423.00	839.44	232,262.44
Section 2 Total	\$3,381,521.65	\$716,812.97	\$4,098,334.62

1 .	<u>Student Transportation Services for Educational Field Trips</u>	131.65
2 .	<u>Student Transportation Services for Student Activities</u>	841.37
3 .	<u>Rental of Vehicles for Student Transportation Services</u>	
4 .	<u>Capital Reserve Funds</u>	

Include only district-owned transportation expenditures paid from State or local money.
 DO NOT include federal expenditures or payments to contract service providers.
 Contracted transportation services should not be recorded on this schedule.

LEA : 121394603 Northwestern Lehigh SD

Printed 11/26/2024 9:37:49 AM

Fund	School	School Number	Local Personnel	Local Nonpersonnel	State Personnel	State Nonpersonnel	Federal Personnel	Federal Nonpersonnel	Total	Explanation
10										
	Northwestern Lehigh El Sch	6449	4,595,762.88	707,852.12	2,106,044.19	324,378.75	163,682.43	14,735.68	7,912,456.05	
	Northwestern Lehigh HS	2821	7,759,295.21	1,453,715.69	3,555,757.55	666,176.55	263,515.10	853.59	13,699,313.69	
	Northwestern Lehigh MS	7353	5,222,706.07	943,575.08	2,393,345.80	432,400.64	171,632.33	555.96	9,164,215.88	
	Weisenberg El Sch	2819	4,933,682.79	764,658.70	2,260,898.63	350,410.81	165,854.95	1,488.56	8,476,994.44	
Total			22,511,446.95	3,869,801.59	10,316,046.17	1,773,366.75	764,684.81	17,633.79	39,252,980.06	