



Citizens Advisory Academy

Facilities Update

Doug DeMatteo
Director Buildings & Grounds

Agenda

1. Expectations
2. Overview
3. Review of Projects
4. Challenges
5. Q&A

OVERVIEW

MOVING FORWARD IN 2025

- About Me
- Organizational Changes
- Priorities
- Transparency



WHAT IS B&G?

- Plant operations - boilers, roofs, A/C
- Inside - Custodial Duties, Air quality, Painting, Floors, etc.
- Outside - Landscaping, Parking Lots, Snow Removal
- Trades - Electricians, Plumbers, Mechanics, Carpenters, HVAC
- Logistics - Planning, budgeting, acquiring

A mix of support

PROJECTS

- Most projects this year were upgrades to existing systems.
- Many of which were started but needed to be completed.
- Staff needed training.
- New ticketing system will decrease turnaround time.



Next Up - individual projects by building.

Sand Shore



- Sand Shore Road,
52,000square feet
- 409 students
- Smallest elementary school
- Built 1972

Sand Shore



Sand Shore



Sand Shore



Tinc Road



- Tinc Road, 61,000 square feet
- 444 students
- built 1974

Tinc Road



Tinc Road



CMS



- Sunset Drive, 88,745 square feet
- 693 students
- Largest elementary school
- Built 1966

CMS



CMS

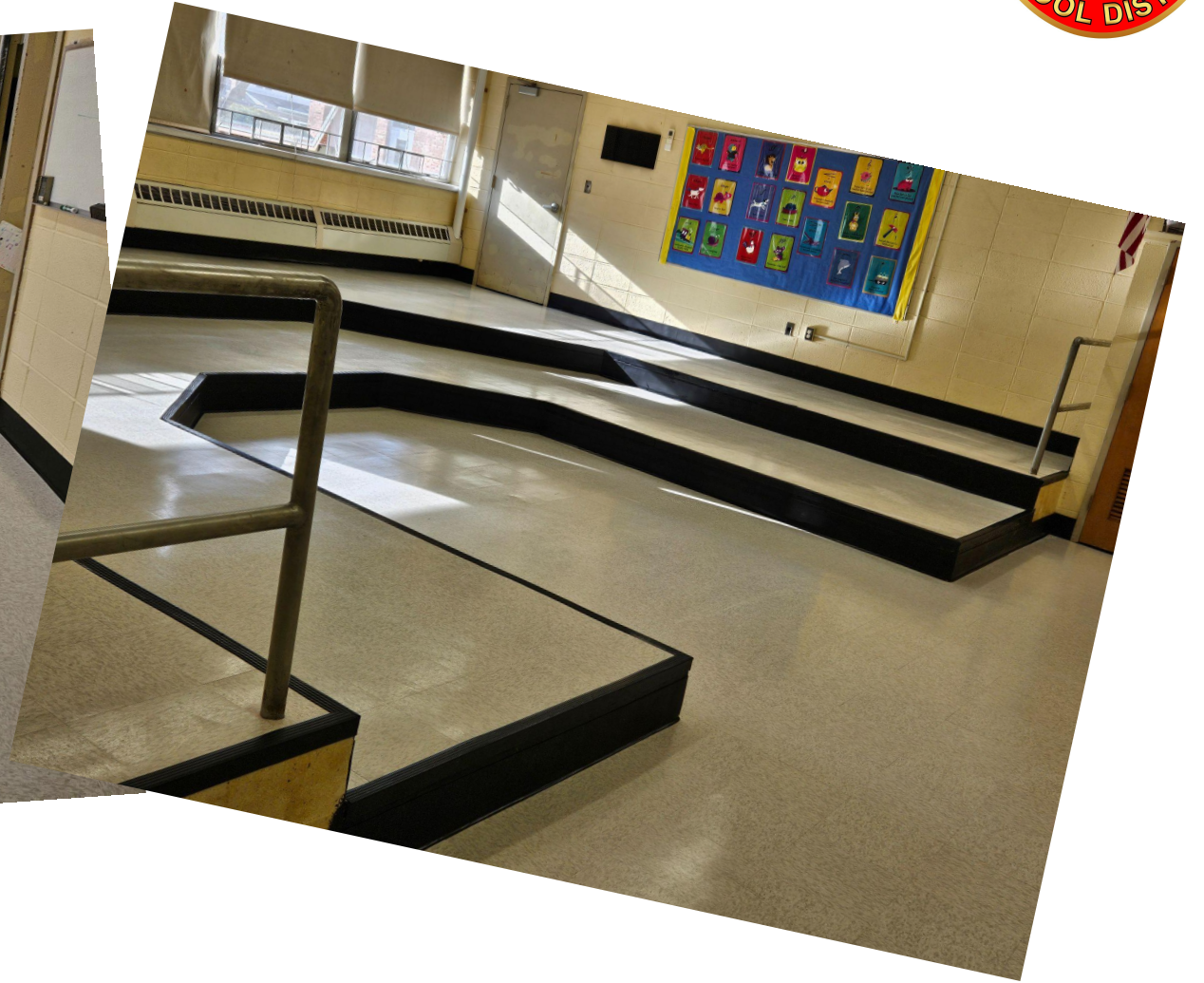
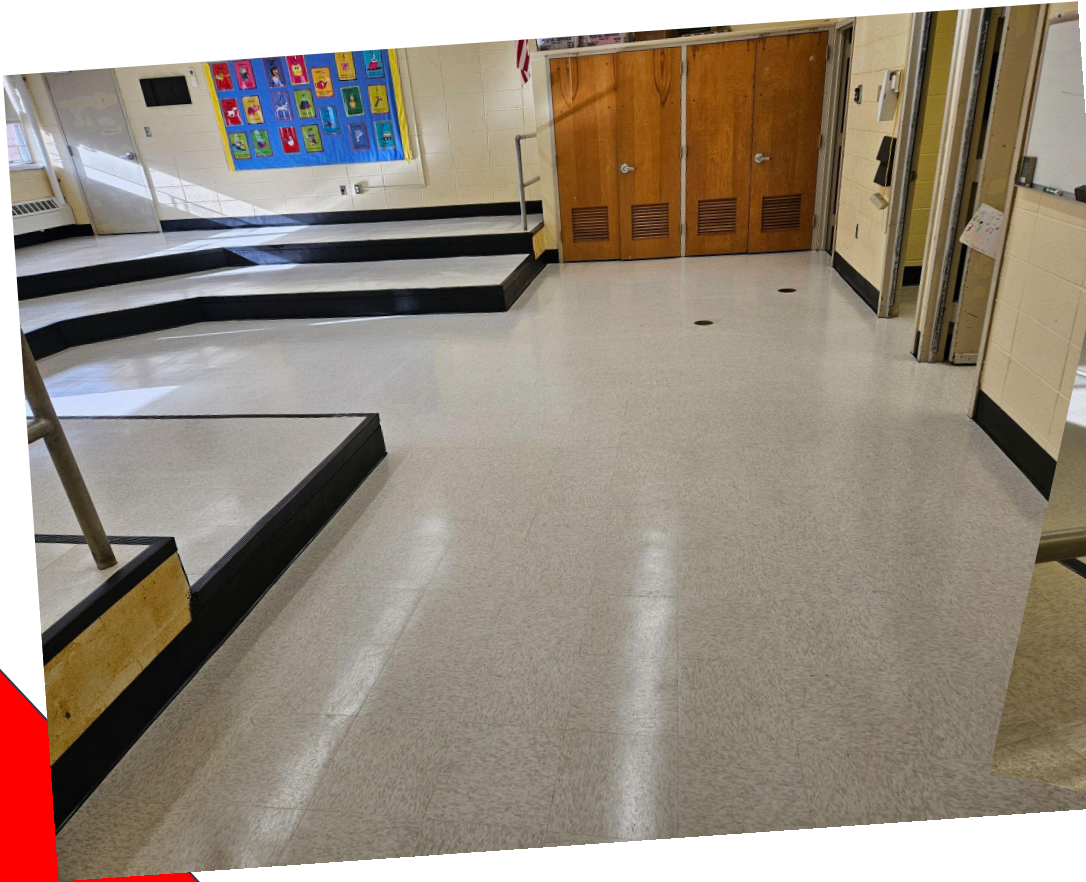


Mountain View



- Built, 1969, 76,000 square feet
- 563 students
- Houses most of our special class programs

Mountain View



Mountain View



Welcome to Pre-K!

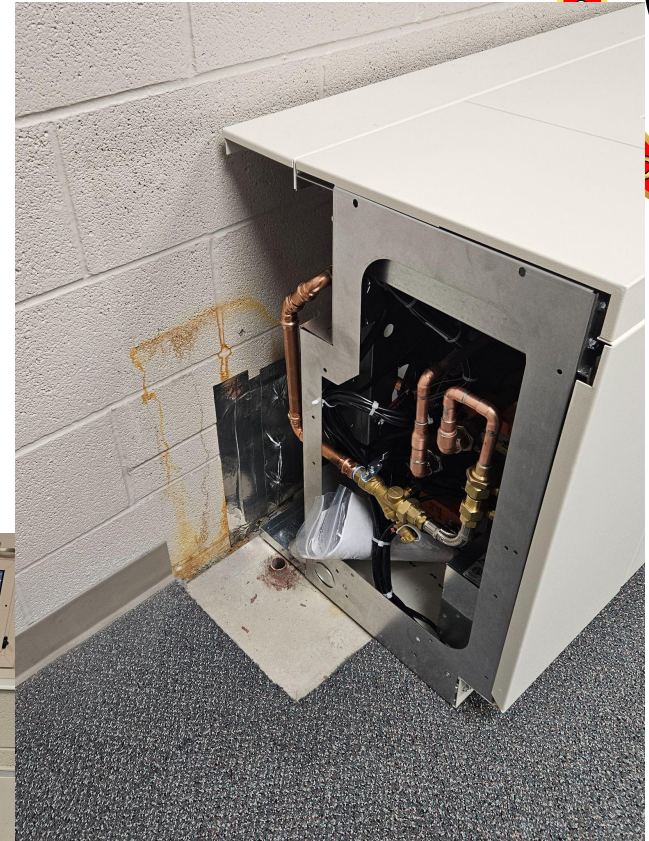


MOMS



- Wolfe Road, 201,934 square feet
- 1,141 students
- Transportation
- Built 2000

MOMS



MOMS

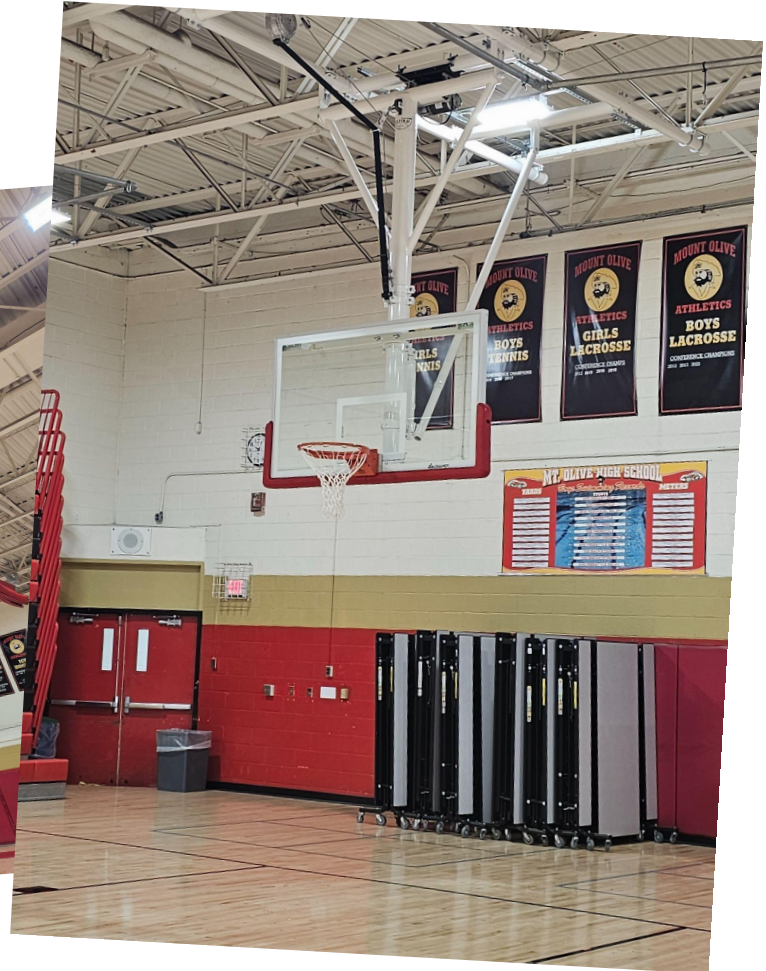


MOHS

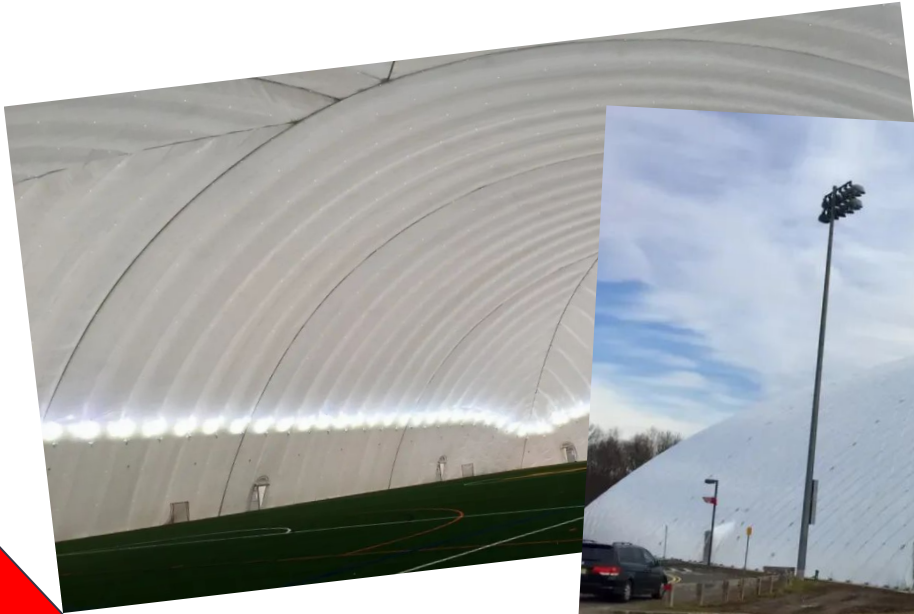


- Corey Road, 335,000 square feet
- 1,510 students
- Dome, Stadium
- Pole Barn, Maintenance Facilities
- 1978 addition 1981 addition 2006

MOHS



MOHS



BOE



Transportation



CHALLENGES

STAFFING

FINANCES

AGE OF BUILDINGS





Questions **AND** **ANSWERS**

