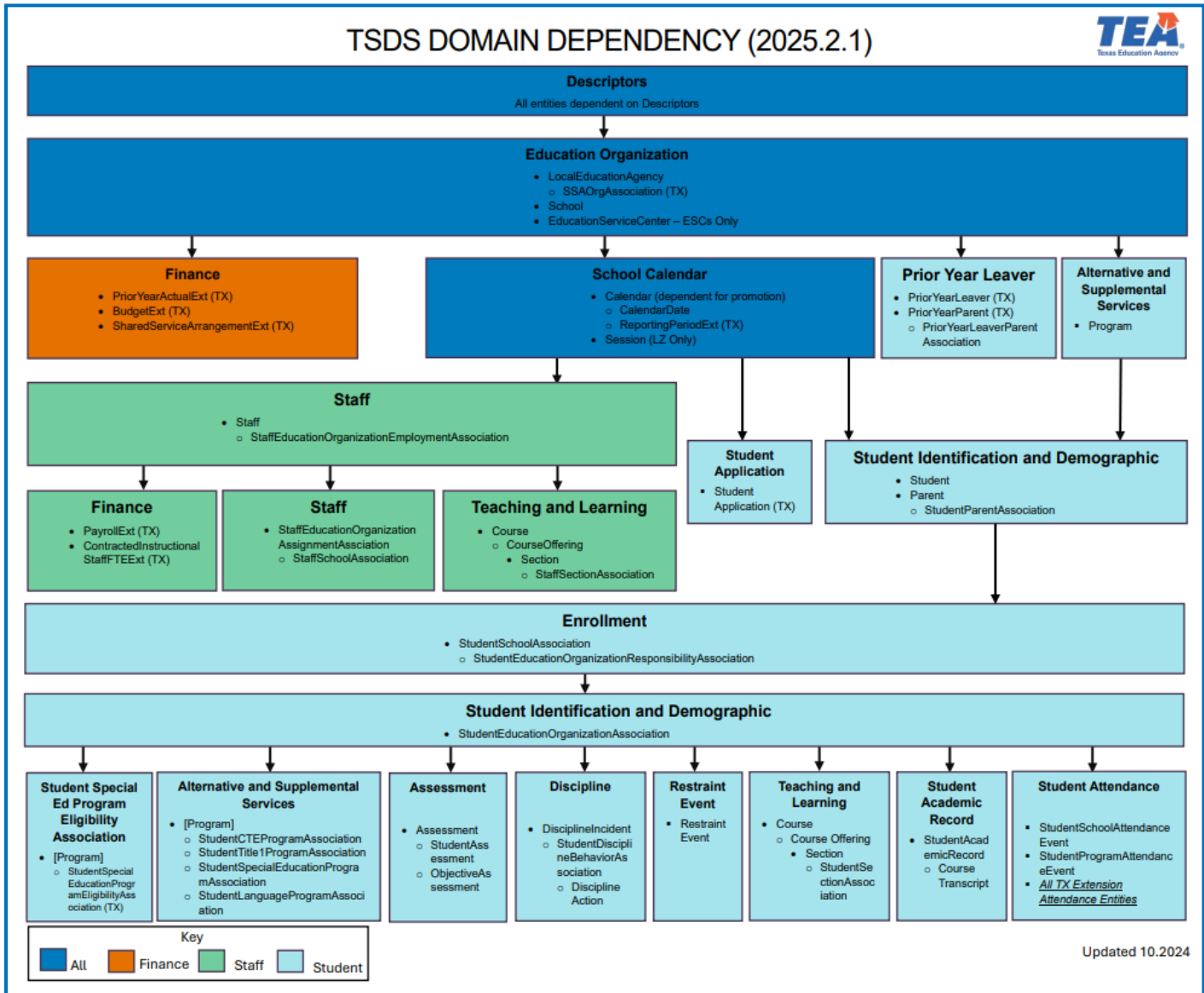


TSDS Domain Dependency Resource Document

Target Audience: Local education agencies (LEAs) and Education service centers (ESCs).

Purpose: To provide assistance on how to utilize the Domain Dependency Charts referenced in [TSDSKB-660](#). Domain dependencies are similar to load order, in which data (Domains) must be published to the IODS in a specific way. This resource can assist users as they identify and resolve Level 1 (API) errors with their source system vendor.

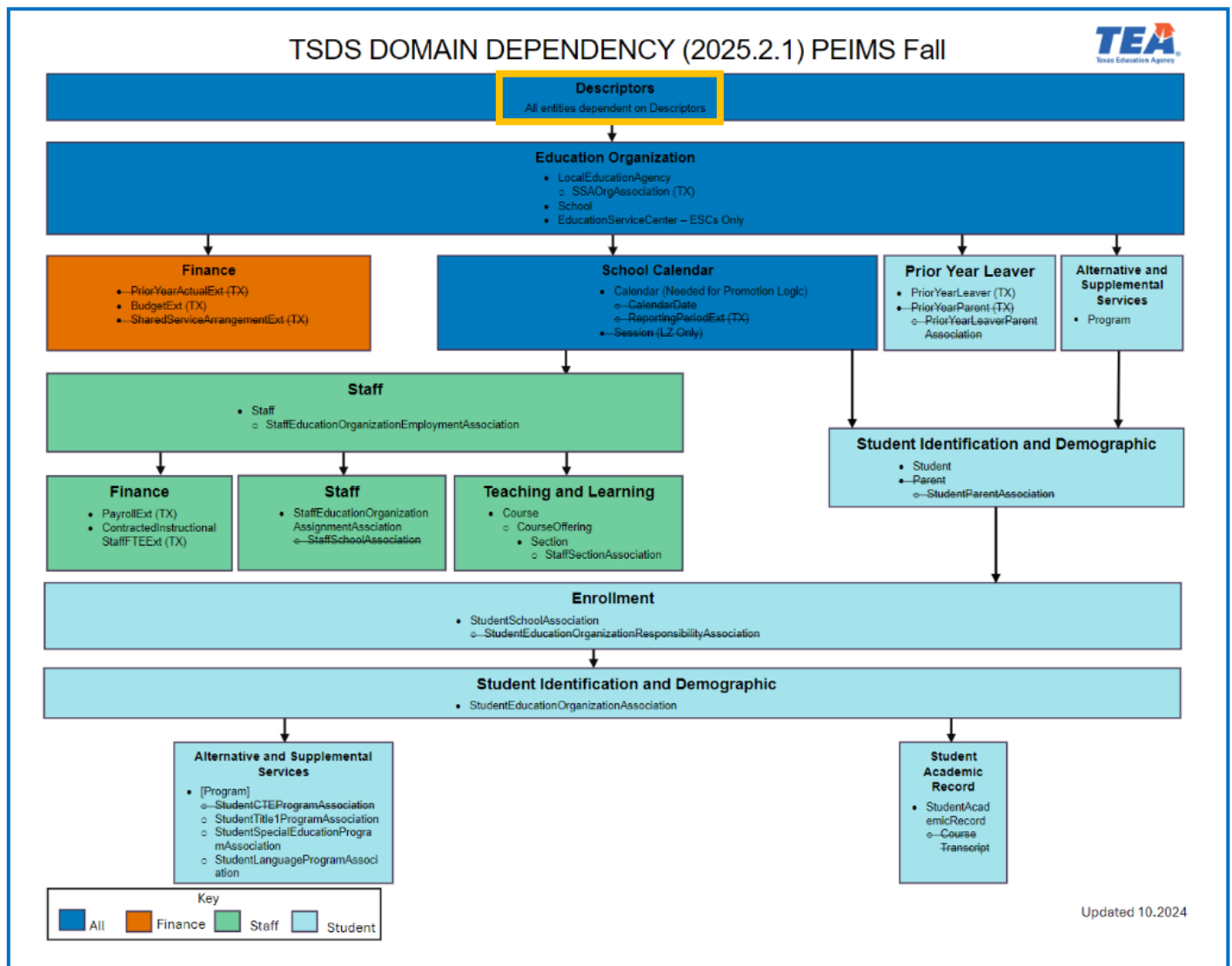
TSDS Domain Dependency Chart



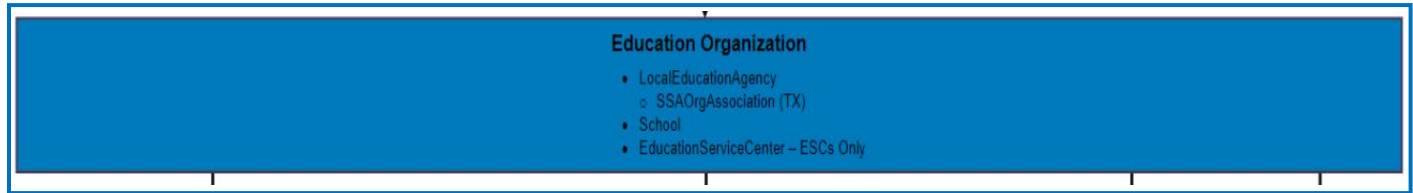
This reference guide utilizes the TSDS PEIMS Fall Domain Dependency Chart as an example. It can be used to assist with other TSDS data submission Domain dependency charts as well.

TSDS Domain Dependency Chart for PEIMS Fall

- All entities are dependent on Descriptors; this is shown at the top of each chart.
- A bullet inside a domain represents a specific entity from the Texas Education Data Standards (TEDS).
- Notice the color coding throughout the chart and the legend at the bottom of the chart that identifies the different types of data. The dark blue indicates domains that are applicable to finance, staff, and student data. The other colors define finance data, staff data, or student data.
- All black arrows throughout the document define the relationship between the domains.



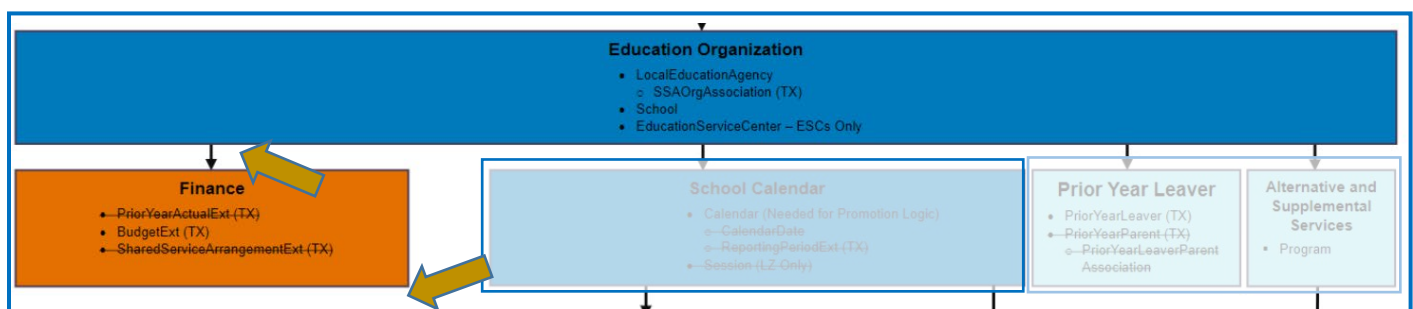
Education Organization Domain: This domain must be published first. **All other domains are dependent** on the data in the Education Organization Domain.



- Within the Education Organization Domain all four entities are required for PEIMS Fall.
 - The SSAOrgAssociation (TX) is indented to show that it is part of the domain and dependent on the LocalEducationAgency Entity.
 - Helpful Tip: All entities that end in the word ASSOCIATION are dependent on another entity.*

Finance Domain (Current Year Budget): This domain is dependent only on the Education Organization Domain. There are no domains with dependencies on the current year budget data in the Finance Domain.

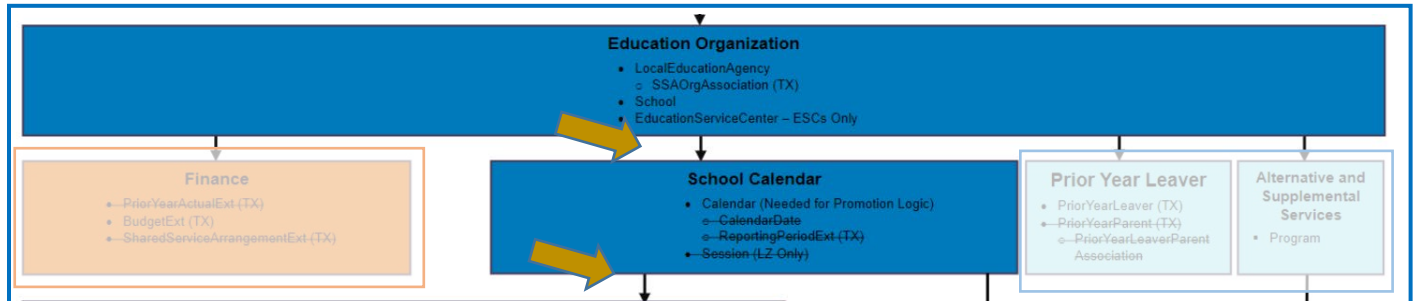
- Helpful Tip: Two of the entities have a strikethrough on this chart. This indicates these entities are not required for PEIMS Fall.*



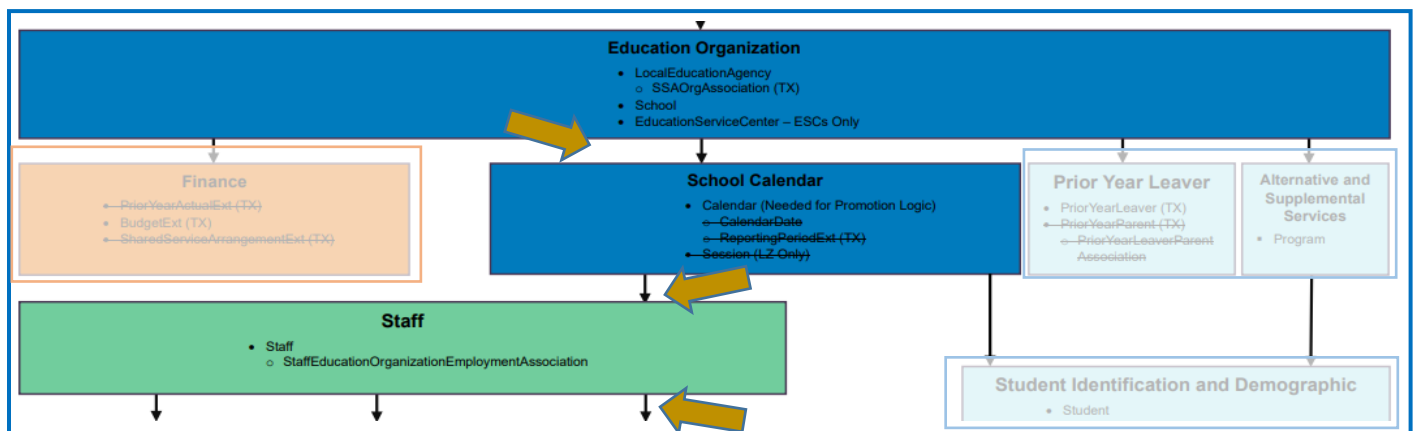
- Three entities in this domain are associated with financial data that is dependent on the data in the Education Organization Domain.

School Calendar Domain: This domain is dependent on the Education Organization Domain and many domains are dependent on the School Calendar Domain.

- *Helpful Tip: Three of the entities have a strikethrough on this chart. This indicates these entities are not required for PEIMS Fall. The Calendar Entity is needed for Promotion Logic, but this data will not actually be promoted for PEIMS Fall*

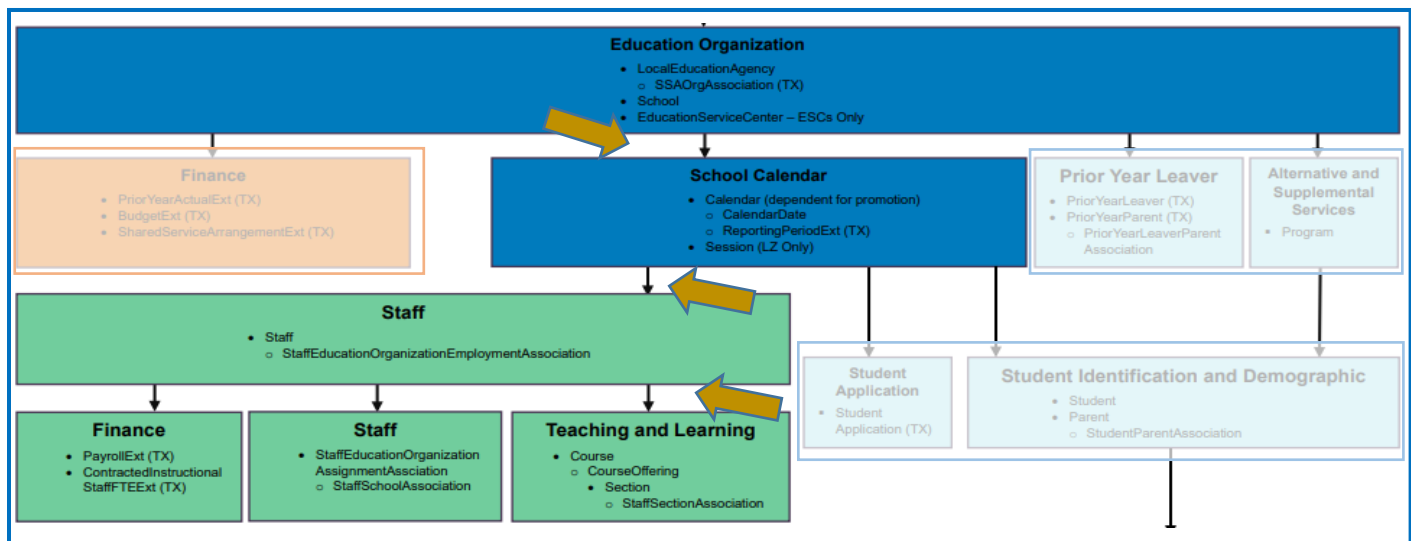


- There are four entities in the School Calendar Domain.
 - **Staff Domain:** This domain is dependent on the Education Organization Domain and the School Calendar Domain.
 - *Helpful Tip: The Staff Domain will be on the chart a little further down with additional entities and dependencies.*



- There are two entities in the Staff Domain at this point on the chart.
 - The StaffEducationOrganizationEmploymentAssociation Entity is dependent on the Staff Entity as shown by the indented bullet.

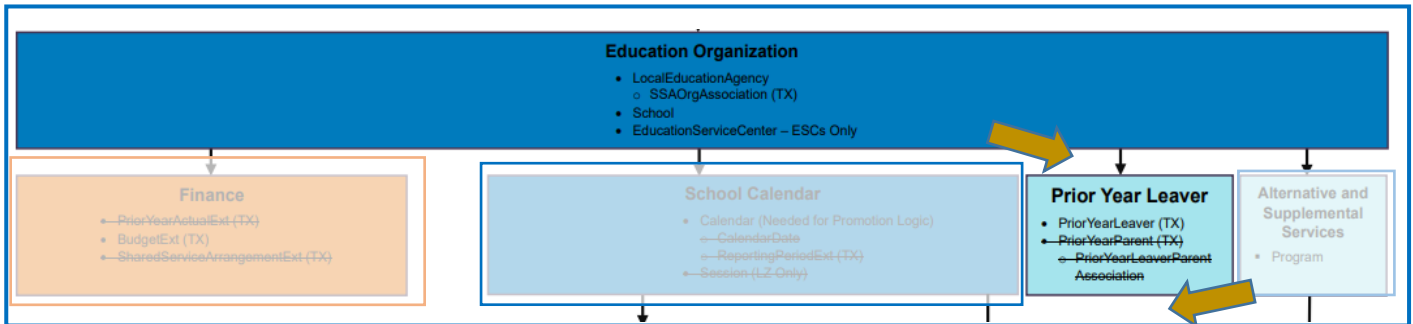
Finance, Staff and Teaching and Learning Domains: These three domains are dependent on the Education Organization, School Calendar, and Staff Domains.



- The Finance Domain data under the Staff Domain dependencies shows two entities which are dependent on the data in the Education Organization, School Calendar, and Staff Domains.
 - *Helpful Tip: The Finance Domain is dependent on the Education Organization Domain.*
- The StaffEducationOrganizationAssignmentAssociation Entity on the Staff Domain is dependent on the Staff Entity and StaffEducationOrganizationEmploymentAssociation Entity. The StaffSchoolAssociation Entity is dependent on the StaffEducationOrganizationAssignmentAssociation Entity as shown by the indented bullet.
- The Teaching and Learning Domain is dependent on the Education Organization, School Calendar, and Staff Domains.
 - The Course, CourseOffering, Section, and StaffSectionAssociation Entities have dependencies on each other as shown by the indented bullets.

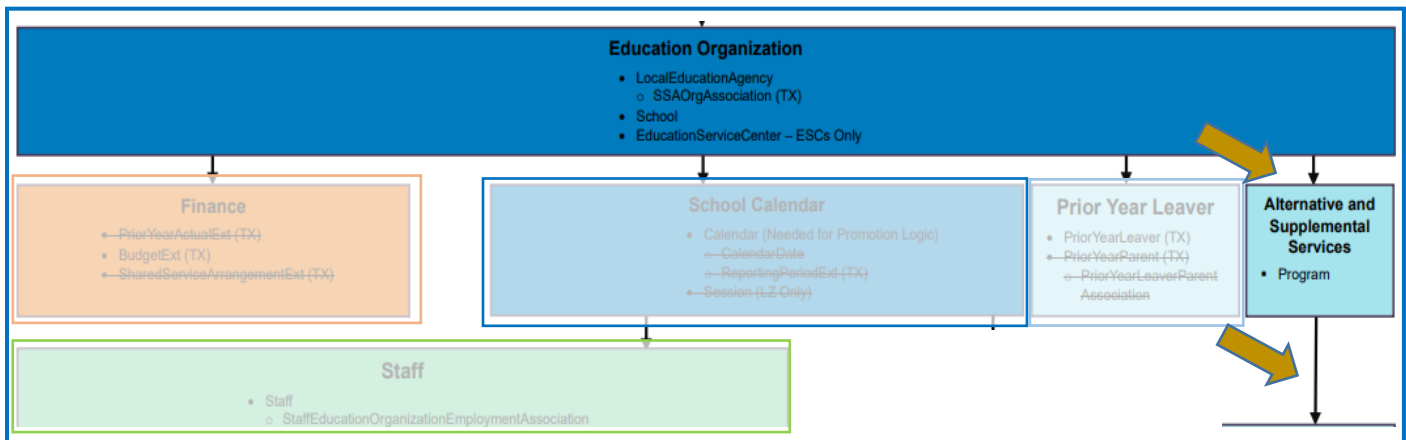
Prior Year Leaver Domain: This domain is dependent on the Education Organization Domain and no other domains are dependent on the Prior Year Leaver Domain.

- *Helpful Tip: Two of the entities have a strikethrough on this chart. It indicates these entities are not required for PEIMS Fall.*



- There are three entities in the Prior Year Leaver Domain.

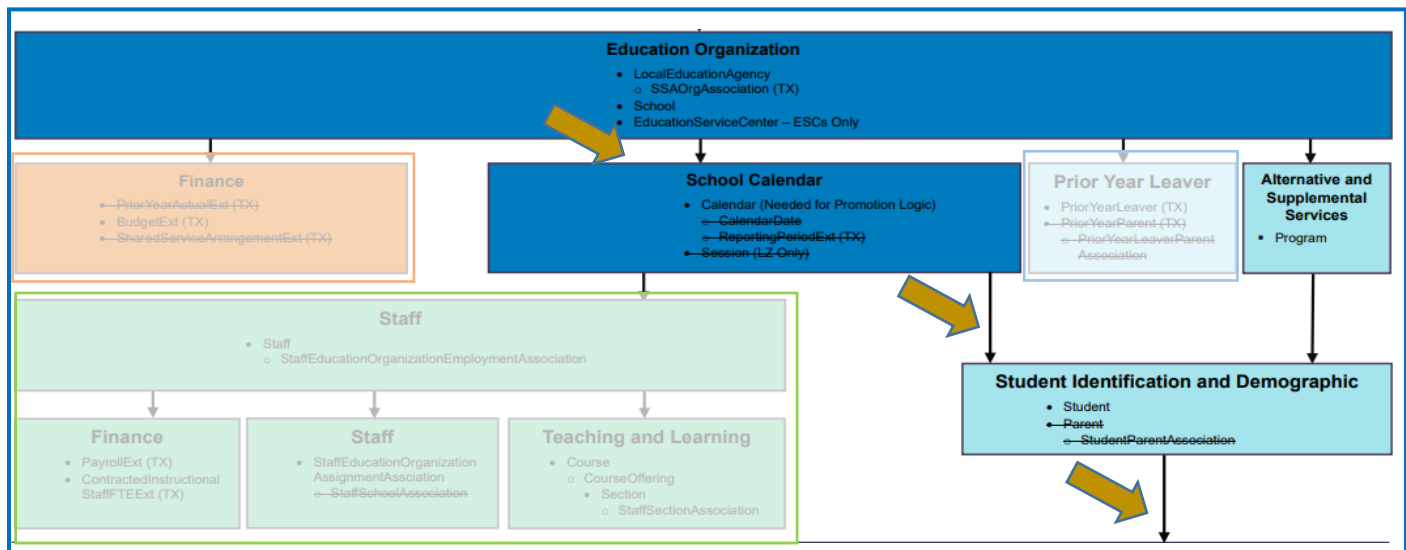
Alternative and Supplemental Services Domain: This domain is dependent on the Education Organization Domain and other student data domains are dependent on the Alternative and Supplemental Services Domain.



- The Program Entity is the only entity in this domain that has dependencies on the Education Organization Domain as shown at this point in the chart.
 - *Helpful Tip: The Alternative and Supplemental Services Domain will be on the chart a little further down with additional entities and dependencies.*

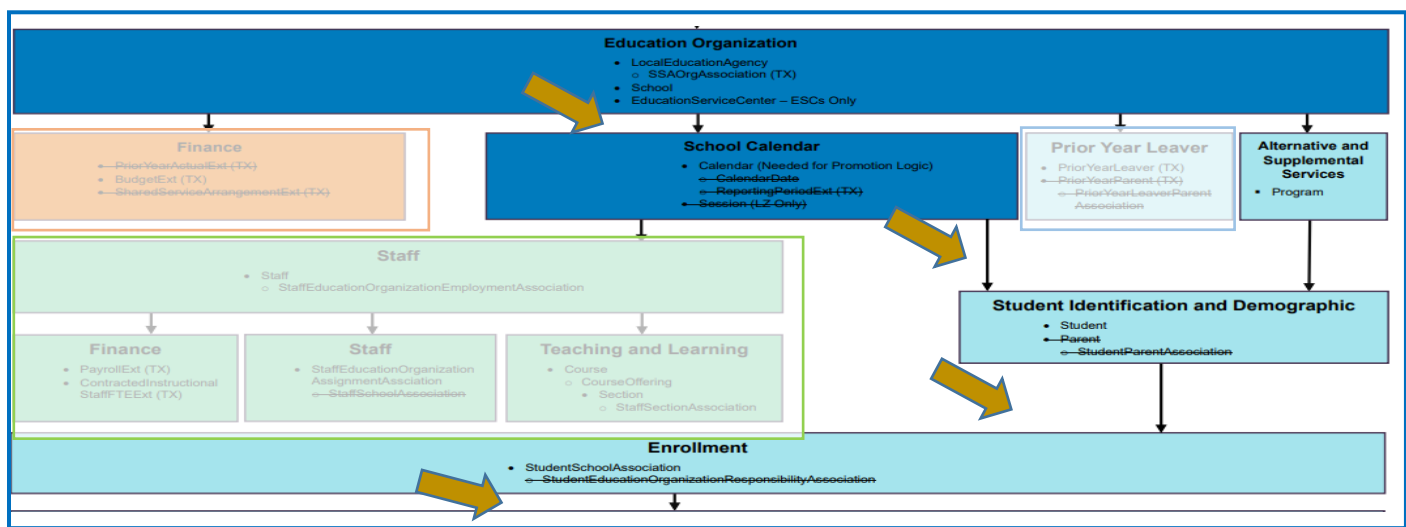
Student Identification and Demographic Domain: This domain is dependent on the Education Organization, School Calendar, and Alternative and Supplemental Services Domains. Other student data domains are dependent on the Student Identification and Demographic Domain.

- *Two of the entities have a strikethrough on this chart and are not required for PEIMS Fall.*



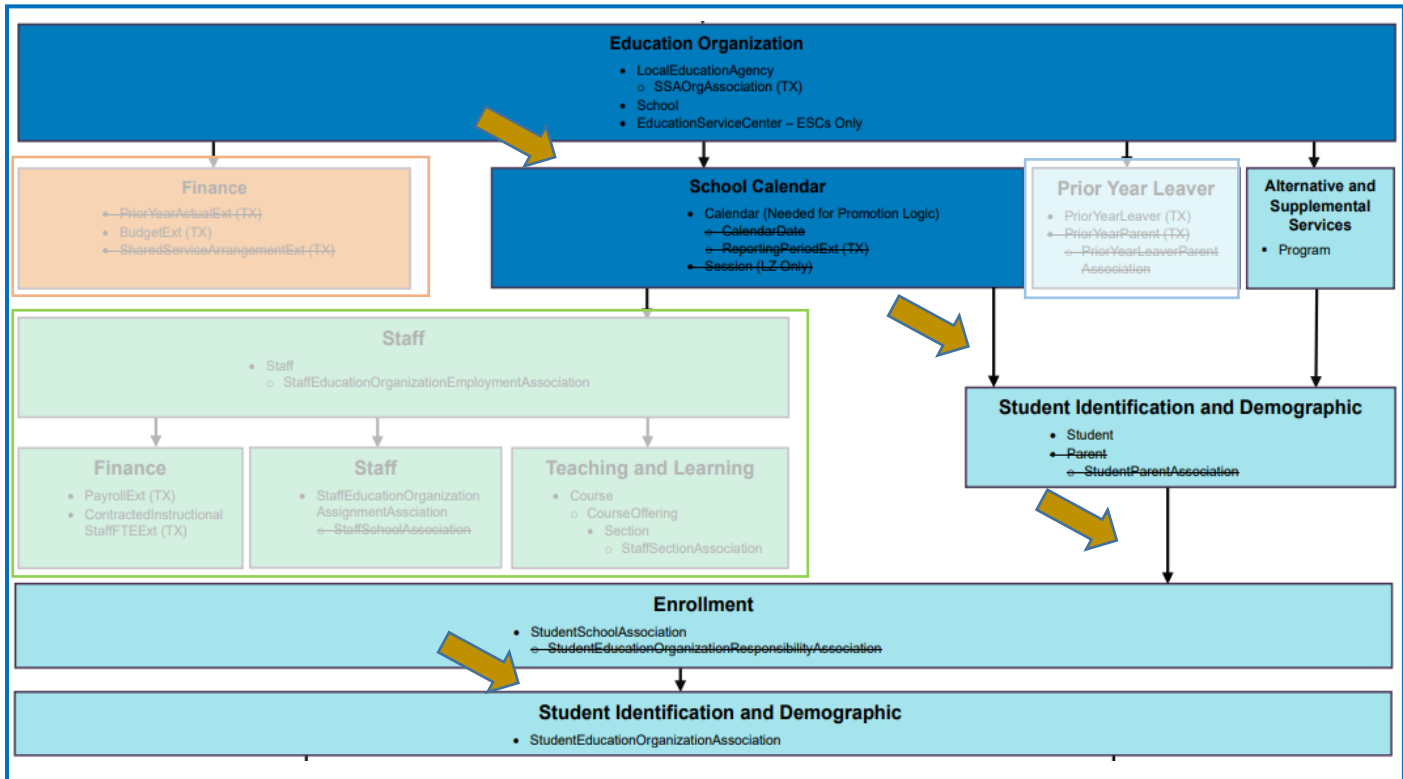
- There are three entities in the Student Identification and Demographic Domain that are dependent upon the Education Organization, School Calendar, and Alternative and Supplemental Services Domains.
 - *Helpful Tip: The Student Identification and Demographic Domain will be on the chart a little further down with additional entities and dependencies.*

Enrollment Domain: This domain is dependent on the Education Organization, School Calendar, Alternative and Supplemental Services, and Student Identification and Demographics Domains. Other student data domains are dependent on the Enrollment Domain.



- There are two entities in the Enrollment Domain.
 - *Helpful Tip: Only the StudentSchoolAssociation Entity is required for PEIMS Fall.*

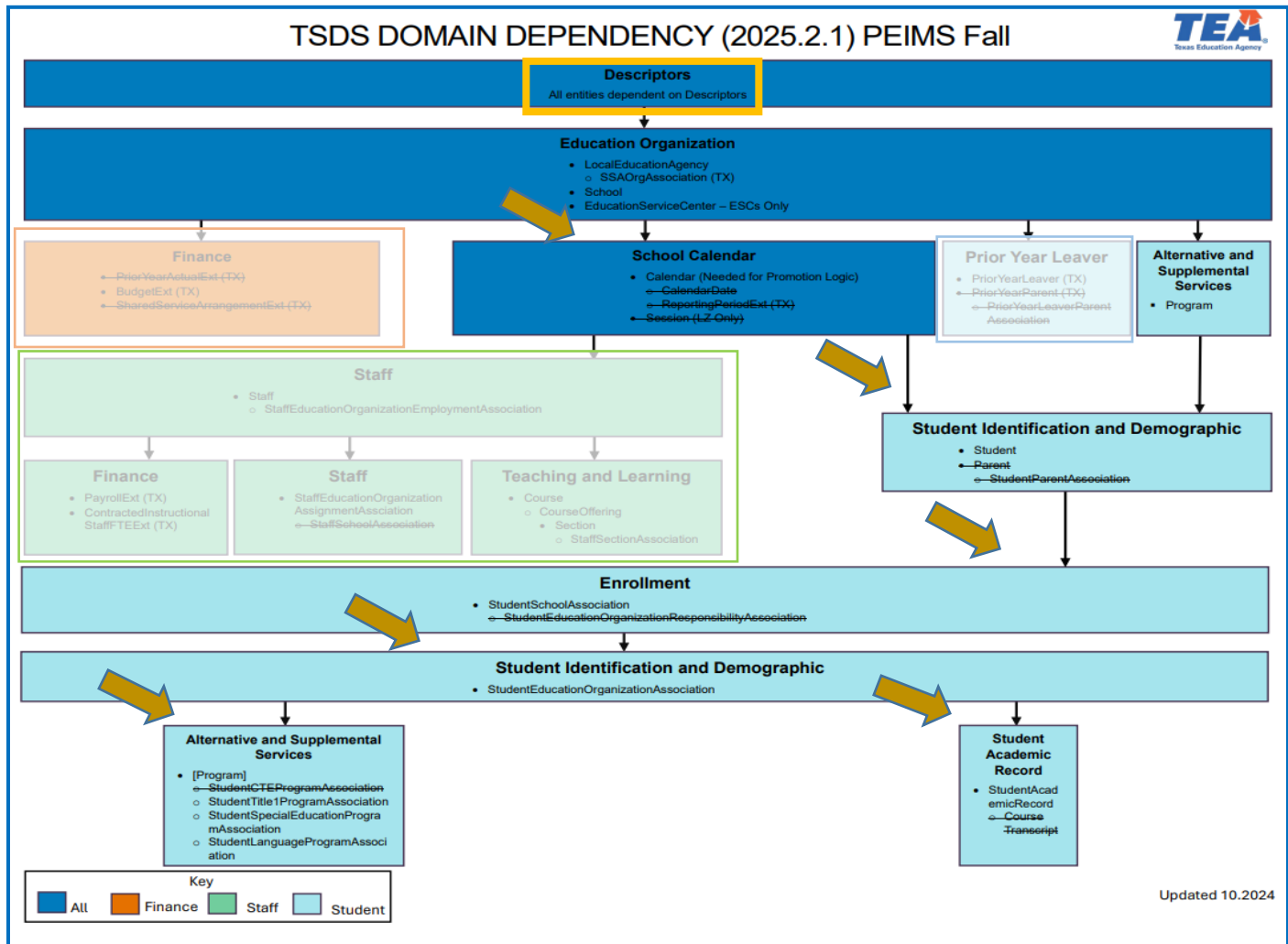
Student Identification and Demographic Domain: This domain is dependent on the Education Organization Domain, School Calendar Domain, Alternative and Supplemental Services Domain, Student Entity, and Enrollment Domain. Other student data domains are dependent on the Student Identification and Demographic Domain.



- On the Student Identification and Demographic Domain, the StudentEducationOrganizationAssociation Entity is dependent on the Education Organization, School Calendar, Student Identification and Demographic, and Enrollment Domains.
 - *Helpful Tip: The Student Identification and Demographic Domain seen earlier on this chart was not dependent on the Enrollment Domain.*

Alternative and Supplemental Services and Student Academic Record Domains: These domains are dependent the Education Organization, School Calendar, Alternative and Supplemental Services (Program), Student Identification and Demographic (Student), Enrollment, and Student Identification and Demographic (StudentEducationOrganizationAssociation) Domains.

- *There is one entity on the Alternative and Supplemental Services Domain shown with a strikethrough and is not required for PEIMS Fall.*



- The Alternative and Supplemental Services Domain has four entities and three of these are dependent on the Program Entity as shown by the indented bullets.
- The Student Academic Record Domain has only one entity that is required for PEIMS Fall.