



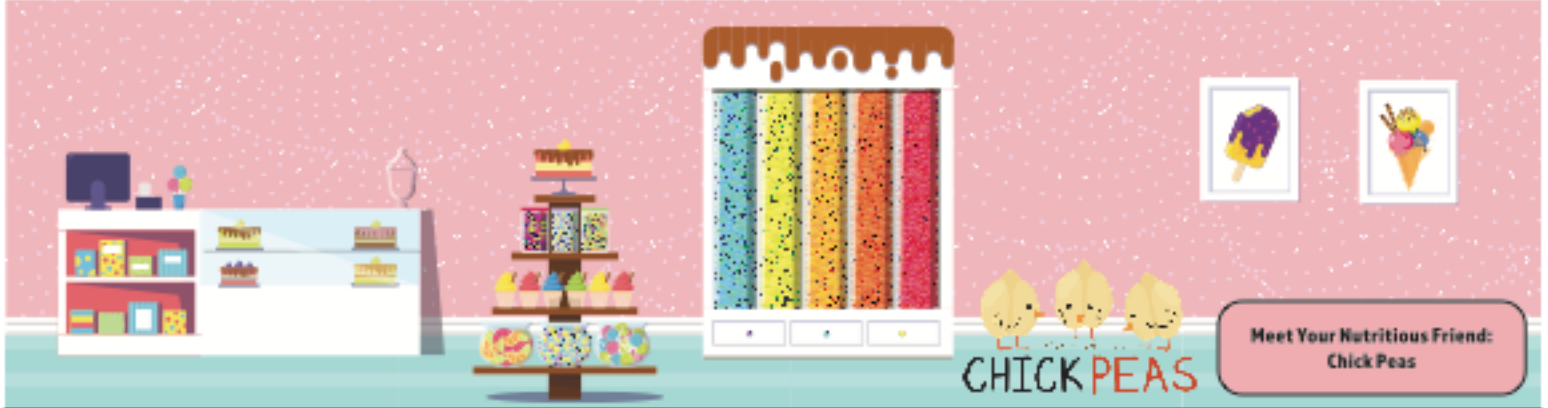
Monday	Tuesday	Wednesday	Thursday	Friday	Offered Daily
3 Assorted Cereals or Cereal Bar with Graham Crackers	4 Yogurt w/Granola Assorted Cereals or Cereal Bar with Graham Crackers	5 Apple Bites Assorted Cereals or Cereal Bar with Graham Crackers	6 Mini Cini Rolls Assorted Cereals or Cereal Bar with Graham Crackers	7 Apple Frudel Assorted Cereals or Cereal Bar with Graham Crackers	<p>What is a Meal? Students must choose at least 3 of the 4 components available for the school breakfast price.</p> <ul style="list-style-type: none"> - Choice of Whole Grain - Choice of Protein - Choice of Fruit - Choice of Milk <p>A minimum ½ cup serving of fruit or vegetable must accompany a reimbursable breakfast.</p> <p>Whole Grain Cereals (served with toast) Cinnamon Toast Crunch, Cocoa Puffs, Froot Loops</p> <p>Choice of Fruit Seasonal fresh fruits, canned fruit in light syrup, 100% fruit juice</p> <p>Choice of Milk 1% white, chocolate</p> <p>(V) Vegetarian <i>These items do not contain meat, poultry, or seafood, but may contain dairy and/or egg</i></p> <p>(VG) Vegan <i>These items do not contain any animal products</i></p>
10 Assorted Cereals or Cereal Bar with Graham Crackers	11 Chocolate Chip Muffin Assorted Cereals or Cereal Bar with Graham Crackers	12 Apple Bites Assorted Cereals or Cereal Bar with Graham Crackers	13 Mini Cini Rolls Assorted Cereals or Cereal Bar with Graham Crackers	14 Early Dismissal Assorted Cereals or Cereal Bar with Graham Crackers	
17 No School Presidents Day	18 Assorted Cereals or Cereal Bar with Graham Crackers	19 Apple Bites Assorted Cereals or Cereal Bar with Graham Crackers	20 Mini Cini Rolls Assorted Cereals or Cereal Bar with Graham Crackers	21 Apple Frudel Assorted Cereals or Cereal Bar with Graham Crackers	
24 Assorted Cereals or Cereal Bar with Graham Crackers	25 Chocolate Chip Muffin Assorted Cereals or Cereal Bar with Graham Crackers	26 Apple Bites Assorted Cereals or Cereal Bar with Graham Crackers	27 Mini Cini Rolls Assorted Cereals or Cereal Bar with Graham Crackers	28 Apple Frudel Assorted Cereals or Cereal Bar with Graham Crackers	

Your Team
Jeannie Horner
609 267-9172x123
lunch@etsdnj.us

Meal Prices
Student Breakfast \$1.75
Reduced Breakfast \$0.00



Menu subject to change due to product availability. This institution is an equal opportunity provider and employer.



Monday	Tuesday	Wednesday	Thursday	Friday	Offered Daily
<p>3</p> <p>Pancakes w/Sausage</p> <p>FEATURED VEGGIES Tater Tots Baby Carrots</p>	<p>4</p> <p>Mozzarella Sticks w/Pasta</p> <p>FEATURED VEGGIES Sweet Corn Cucumber Slices</p>	<p>5</p> <p>Turkey & Cheese Pinwheels</p> <p>FEATURED VEGGIES Carrot Coins Broccoli Bites</p>	<p>6</p> <p>Chicken Strips w/Waffle Sticks</p> <p>FEATURED VEGGIES Peas Celery Sticks</p>	<p>7</p> <p>Cheesy Pizza</p> <p>FEATURED VEGGIES Green Beans Baby Carrots</p>	<p>What is a Meal? Students must choose at least 3 of the 5 components available for the school lunch price.</p> <ul style="list-style-type: none"> - Choice of Whole Grain - Choice of Protein - Choice of Vegetable - Choice of Fruit - Choice of Milk
<p>10</p> <p>Pancakes w/Sausage</p> <p>FEATURED VEGGIES Tater Tots Baby Carrots</p>	<p>11</p> <p>Mozzarella Sticks w/Pasta</p> <p>FEATURED VEGGIES Sweet Corn Cucumber Slices</p>	<p>12</p> <p>Chicken Fries w/a Corn Muffin</p> <p>FEATURED VEGGIES Carrot Coins Broccoli Bites</p>	<p>13</p> <p>Cheesy Pizza</p> <p>FEATURED VEGGIES Peas Celery Sticks</p>	<p>14</p> <p>Early Dismissal No Lunch</p>	<p>A minimum ½ cup serving of fruit or vegetable must accompany a reimbursable lunch.</p> <p>Choice of Vegetable Hot vegetable, leafy salad, composed bean salad, seasonal fresh vegetables</p>
<p>17</p> <p>No School Presidents Day</p>	<p>18</p> <p>Mozzarella Sticks w/Pasta</p> <p>FEATURED VEGGIES Sweet Corn Cucumber Slices</p>	<p>19</p> <p>Turkey & Cheese Pinwheels</p> <p>FEATURED VEGGIES Carrot Coins Broccoli Bites</p>	<p>20</p> <p>Chicken Nuggets w/Rice</p> <p>FEATURED VEGGIES Peas Celery Sticks</p>	<p>21</p> <p>Cheesy Pizza</p> <p>FEATURED VEGGIES Oven Roasted Zucchini Carrot & Raisin Salad</p>	<p>Choice of Fruit Seasonal fresh fruits, canned fruit in light syrup, 100% fruit juice</p> <p>Choice of Milk fat-free white, chocolate</p>
<p>24</p> <p>Pancakes w/Sausage</p> <p>FEATURED VEGGIES Tater Tots Baby Carrots</p>	<p>25</p> <p>Mozzarella Sticks w/Pasta</p> <p>FEATURED VEGGIES Sweet Corn Cucumber Slices</p>	<p>26</p> <p>Turkey & Cheese Pinwheels</p> <p>FEATURED VEGGIES Carrot Coins Broccoli Bites</p>	<p>27</p> <p>Popcorn Chicken w/ a Biscuit</p> <p>FEATURED VEGGIES Peas Celery Sticks</p>	<p>28</p> <p>Cheesy Pizza</p> <p>FEATURED VEGGIES Green Beans Baby Carrots</p>	<p>Daily Alternates Fresh Entree Salad of the Week Craveables Weekly Cold Cut Sandwiches or Wraps</p>
					<p>(V) Vegetarian <i>These items do not contain meat, poultry, or seafood, but may contain dairy and/or egg</i></p> <p>(VG) Vegan <i>These items do not contain any animal products</i></p>

Your Team
Jeannie Horner
609 267-9172x123
lunch@etsdnj.us

Meal Prices

Student Lunch	\$3.25
Reduced Lunch	\$0.00
Faculty Lunch	\$4.00



Menu subject to change due to product availability. This institution is an equal opportunity provider and employer.