

# **Welcome to Springhouse Middle School**

## **5<sup>th</sup> Grade Parent's Night**



**Home of the Timberwolves**



# **5<sup>th</sup> Grade Parents' Night Agenda**

## **Springhouse Middle School**

### **Wednesday, February 5, 2025**



**Welcome and Introduction**

**Dr. Sandt**

**6<sup>th</sup> Grade Curriculum**

**Mrs. Dewald**

**Mr. Haines**

**Mrs. Kadar**

**6<sup>th</sup> Grade Guidance/Exploratory Subjects**

**Mrs. Jenkins**

**Music Selection**

**Dr. Sandt**

**Springhouse Middle School Partnership**

**Dr. Sandt**

**6<sup>th</sup> Grade Health Requirements**

**Mrs. Troutman**

**6<sup>th</sup> Grade Enrichment**

**Mrs. Schneider**

**Student Activities and Club Information**

**Mrs. Abdelaal**

**Dr. Brandt**

**Ms. Nomie**

**Conclusion**

**Dr. Sandt**

# SPRINGHOUSE is....





don't panic



IT'S UNDER CONTROL

Visit us online at  
<https://sms.parklandsd.org/>



## SPRINGHOUSE MIDDLE SCHOOL

*Educating for Success, Inspiring Excellence*

 District  Select Your School  Clever  Intranet 

About

Teams

Announcements

Students

Parents

Staff

Directory



Get Social by following us  
on Twitter: @SpringhouseMS  
on Facebook: Springhouse Middle School  
on Instagram: springhousemiddleschool

# Parent Resources: Schoology and Home Access



**SPRINGHOUSE MIDDLE SCHOOL**

*Educating for Success, Inspiring Excellence*

🏠 District Select Your School ▼ Clever Intra

About

Teams

Announcements

Students

Parents

Staff

Directory

Access Center

Middle School Links

PTO

Parent Resources

Schoology Parent Portal

## Parent Resources

[CLEVER Portal login instructions](#) – for all applications related to curriculum, log into Clever

[Student Google Apps login instructions from home](#)

[Volunteer Policy and Information](#)

[SCHOOLOGY Portal login instructions](#)

## Home Access Center

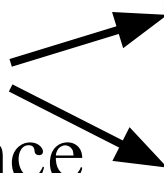
- Home Access Center
- Parent Home Access Center Information
- For HAC support, contact: [hac@parklandsd.org](mailto:hac@parklandsd.org)

[Schoology Parent Portal](#)

## Manuals

- Elementary School Student Handbook
- Middle School Student Handbook
- High School Course Catalog
- High School Course Registration Forms
- High School Student Handbook

View Grades  
and  
Attendance







# EDUCATING THE WHOLE CHILD

PARKLAND HIGH SCHOOL - **ARTS** - PARKLAND HIGH SCHOOL

OREFIELD SPRINGHOUSE - **ATHLETICS** - SPRINGHOUSE OREFIELD

A FOGELSVILLE FRED JAINDL IRONTON KERNSVILLE - **ACADEMICS** - KRATZER PARKWAYMANOR SCHNECKSVILLE VET



# Middle School Mission Statement

**The Parkland Middle School is  
a collaborative effort of staff, students, and  
community which together cultivates the uniqueness  
of adolescents and  
addresses individual abilities, needs, talents, and  
interests through a challenging, integrated  
curriculum in a nurturing and safe environment.**







# Teaming

Language Arts

Math

Students

Social Studies

Science

Exploratory  
Subjects



# Sample Student Schedule



Period	Day 1	Day 2		Period	Day 1	Day 2
<b>HR</b>	Homeroom	Homeroom		Homeroom Timberwolf Time	Homeroom Timberwolf Time	Homeroom Timberwolf Time
<b>1</b>	Math	Math		<b>1</b>	Math	Math
<b>2</b>	Science	Science		<b>2</b>	Science	Science
<b>3</b>	Social Studies	Math		<b>3</b>	Social Studies	Math
<b>Lunch</b>	Lunch	Lunch		<b>Lunch</b>	Lunch	Lunch
<b>4</b>	Exploratory Cycle	Exploratory Cycle		<b>4</b>	Exploratory Cycle	Exploratory Cycle
<b>5</b>	Language Arts	Language Arts		<b>5</b>	Language Arts	Language Arts
<b>6</b>	Reading	Reading		<b>6</b>	Reading	Reading
<b>7</b>	PE/Health	Infotech		<b>7</b>	PE/Health	Infotech



# Bell Schedule



## Regular Schedule (Mon, Tues, Fri)

Period	Start	End	Minutes
HR	7:45	7:50	5
1	7:53	8:43	50
2	8:46	9:36	50
3	9:39	10:29	50
Lunch	10:32	11:02	30
4	11:05	11:55	50
5	11:58	12:48	50
6	12:51	1:41	50
7	1:44	2:38	54

## Timberwolf Time (Wed and Thurs)

Period	Start	End	Minutes
HR	7:45	7:50	5
TT	7:53	8:36	43
1	8:39	9:23	44
2	9:26	10:10	44
3	10:13	10:57	44
Lunch	11:00	11:30	30
4	11:33	12:17	44
5	12:20	1:04	44
6	1:07	1:51	44
7	1:54	2:38	44





# Language Arts

## Reading

- McGraw-Hill Study Sync
- Excerpts & Short Stories
- Novels
- Literature & Informational text

## Writing

- Paragraph writing
- Essay writing
- TDA – Text Dependent Analysis
- PSSA – Domains (focus content, organization, style, conventions)

## Grammar

- Parts of speech
- Parts of sentences
- Phrases and clauses
- Punctuation, sentence structure
- DGP – Daily Grammar Practice

## Vocabulary

- Greek and Latin roots
- Study Sync vocabulary
- Word Study



# Social Studies

- McGraw-Hill – Discovering Our Past – A History of the World
- Grade-level theme: Ancient Cultures
- Grade-level cultural activities
- Aligned with Pennsylvania Academic Standards





# Science

- Saavas - Elevate Science
- Real-World Application Based
- Middle-level curriculum
- Aligned with the Pennsylvania STEELS Standards -  
Science, Technology & Engineering, and Environment Literacy,  
and Sustainability



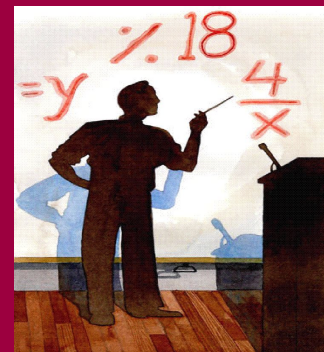




# Mathematics

## Major topics include:

- Ratios and Proportional Relationships
- The Number System
- Expressions and Equations
- Geometry
- Statistics and Probability

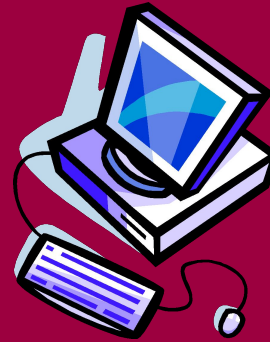


## Common Core Initiative:

- Collaborative groups
- Increased depth of knowledge
- Increased importance of the process to obtain answer

# 6th Grade Exploratory Cycle Information Technology

- Keyboarding
- Word Processing
- PowerPoint
- Internet Research
- Desktop Publishing
- Core Subject Integration



# 6th Grade Exploratory Cycle Health & Physical Education

- Human Growth & Development
- Systems of the Body
  - Endocrine
  - Reproductive
  - Immune
- Substance Abuse
- First Aid

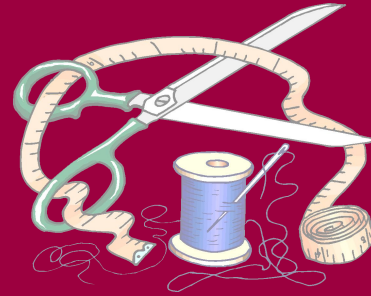




# 6th Grade Exploratory Cycle Family & Consumer Sciences

## Cooking 101

- Equipment & Measuring
- Kitchen Safety
- Food
- Nutrition
- Preparation



## Consumer Education

- Rights & Responsibilities
- Product Information



## Basic Sewing Skills

- Hand
- Machine

# 6th Grade Exploratory Cycle Technology Education

Exploration into Multiple aspects of Technology and Engineering Design/Development/Solutions

Introduction to:

- Manufacturing/Material
- Fabrication/Electronics
- Engineering/Design (AutoCad)

Focus on connections between Science, Technology, Engineering, Math, Medical (STEMM)



# 6th Grade Exploratory Cycle Art

- Color Theory
- Watercolor Painting
- Drawing
- Art History
- Artists
- Cultures







# Performing Music



- **Band, Chorus & Orchestra** are offered as a graded class.
- Meet as a class during marking periods 2 and 5.
- Two marking periods of Performing Music will satisfy music requirement for the school year.
- Performing music groups may be taken in combination:  
Band/Chorus, Orchestra/Chorus, Band/Orchestra
- Students taking either Band or Orchestra must already know how to play a band or orchestra appropriate instrument well enough to be able to participate.

# General Music

- **General Music** is designed to introduce students to the world of music:
  - 6th grade: Instruments and the Science of Sound
  - 7th grade: American Popular Music
  - 8th grade: Classical Music History
- All grades of general music have both a music literacy and a performance component.
- Any student not in a Performing Music will be scheduled for General Music.
- Meets daily for one marking period.



# SMS Partnership

- Fundraising for student events, field trips, and enrichment activities.
- Supports SMS Staff by assembling and providing information such as back to school packets, student directories, and monthly updates.



# Get Involved with SMSP

- Kris Goorsky, SMSP President, [smssp1200@gmail.com](mailto:smssp1200@gmail.com)
- Complete a volunteer form and let us know how you can help.
- Support the SMSP with a member donation.
- Help at events...Book Fairs, Teacher Appreciation, ARP Auction, 8th Grade Dance, 8th Grade Celebration, Field Days
- Most of what SMSP does is behind the scenes, and it benefits the staff and the students.





# Sixth Grade Health Requirements

- Height, Weight, Body Mass Index (BMI) & Vision
- Immunizations
  - State Immunization Requirements:
    - 1) Tdap - tetanus, diphtheria, acellular pertussis
    - 2) MCV - meningitis
- Physical
  - Each 6th grade student is required to get a physical exam in immunizations before the start of 7th grade





# 6th Grade Enrichment

- Mrs. Angie Schneider-Teacher of the Gifted



# 6th Grade Learning Support

- Mrs. Erica Lutri-Special Education Teacher



# Springhouse Middle School

## Co-Curricular & Extra-Curricular Programs

**“Be a part of  
SMS...Get  
Involved!”**



The screenshot shows the Springhouse Middle School website. The header features the school's logo (a wolf head) and the name "SPRINGHOUSE MIDDLE SCHOOL" with the tagline "Educating for Success, Inspiring Excellence". The navigation menu includes "About", "Teams", "Announcements", "Students", and "P". A dropdown menu is open under "Students", showing options: "General Information", "Guidance", "Health Room", and "Student Activities". The "Student Activities" page is displayed, featuring a welcome message and a list of activities: "Arts and Academics" and "Athletics".

**SPRINGHOUSE MIDDLE SCHOOL**  
*Educating for Success, Inspiring Excellence*

**Students**

- General Information
- Guidance
- Health Room
- Student Activities**

At Springhouse Middle School we recognize the importance of young people. The minds and bodies of middle school students in non-academic areas, the school sponsors many activities.

We would like to see all students involved in some of these activities. Involved in clubs, sports, and activities make SMS a better place for multi-grade level interactions, and for all.

If you are interested in signing up for one of these clubs, please contact the teacher or administrator for more information disseminated on the morning announcements.

- ▶ Arts and Academics
- ▶ Athletics



# Student Activities

- Springhouse Middle School offers a wide variety of clubs and activities for students that meet during and after school, weekly.
- If needed, an after school activity bus is provided for students at 4:20pm.
- For a current list of available clubs and activities, please [click here](#).



# Procedures

- Parent drop off/pick up is in front of the building, this includes students who are being picked up after an activity.
- Please follow the yellow line on the serpentine when picking up your child
- The activity bus leaves SMS at 4:20pm, then picks up students at PHS




# SMS Parking and Traffic Flow






# Additional Information

- General Information
  - Attendance Hotline: 610-351-5900 Ext. 66711
  - Forgotten Items
  - Emergency Permits



 **SPRINGHOUSE MIDDLE SCHOOL**  
*Educating for Success, Inspiring Excellence*

[District](#) [Select Your School](#)

[About](#) [Teams](#) [Announcements](#) [Students](#) [Parents](#) [Staff](#) [Directory](#)

[General Information](#)  
[Guidance](#)  
[Health Room](#)  
[Student Activities](#)

## GENERAL INFORMATION

**Office Phone:** 610-351-5700

**Absentee Hotline:** 610-351-5900 Extension 66711

- ▶ [Communication](#)
- ▶ [Daily Announcements](#)





# Interscholastic Athletics

Compete after school against other middle school teams in the Eastern Pennsylvania Conference. Teams are picked on a competitive try-out basis and are open to all 7th and 8th grade students.

Sport	Grade Level	Team	Season	Signups	Physicals
Cross Country	7th and 8th	Combined Team	Fall	May (previous year)	June/July
Field Hockey	7th and 8th	Combined Team	Fall	May (previous year)	June/July
Football	7th and 8th	Combined Team	Fall	May (previous year)	June/July
Girls' Volleyball	7th and 8th	Combined Team	Fall	May (previous year)	June/July
Cheerleading	7th and 8th	Combined Team	Fall/Winter	May (previous year)	June/July
Dance Team*	6th, 7th, 8th	Combined Team	Fall/Winter	May (previous year)	June/July
Boys' Basketball	7th and 8th	SMS Team	Winter	October	October
Girls' Basketball	7th and 8th	SMS Team	Winter	October	October
Wrestling	7th and 8th	Combined Team	Winter	October	October
Softball	7th and 8th	SMS Team	Spring	January	February
Boys' Volleyball	7th and 8th	Combined Team	Spring	February	February

Students are shuttled from Springhouse to their practice location if at another location. Dates and times are provided for all sign-ups via the daily morning announcements.

## **NEEDED FOR PARTICIPATION**

Signed parental permission form and physician's examination before first practice. Physicals are provided by the Parkland School District, free of charge, if a student signs up during the preseason sign-up period.



# Upcoming Events

- STEAM Expo: Friday, March 21
- Penpals & 5th Grade Visits: May 2025
- 6th Grade Boot Camp: August 2025
- 6th Grade Meet and Greet: August 2025
- 6th Grade Orientation: Wednesday, August 20
- Open House: Wednesday, August 20

# **6th Grade and New Student Meet and Greet August 12, 2025**



**Presented by Springhouse Superintendent Student  
Leadership Committee and SMS Mentors**





# Meet and Greet Schedule

- Session 1 - 8:45 - 10:45
- Session 2 - 10:45 - 12:45
- Session 3 - 1:45 - 3:45
- Session 4 - 3:45 - 5:45



# Student Activities/Stations

- Tours of the building
- Learn How to Use and Open Lockers
- Learn How to Get Lunch and Cafe Lines
- Explore MakerSpace and Library
- Ice Breaker Games and Activities
- Q&A Session with Upper Classmen



# Parent Activities

- Parent Information Session with Dr. Sandt
- Guided Tours of the building
- Food and refreshments will be available in the Cafeteria
- Meet Officers/Members of SMS Parent Partnership



- **Registration Forms and Information will be sent out at the end of the school year from your Elementary Principals.**
- **For more information or questions, please contact:**
  - **Ms. Mary Nomie**  
**[nomiem@parklandsd.net](mailto:nomiem@parklandsd.net)**

# Thank You for Coming!

## Springhouse Middle School



### Administration

Dr. Jude Sandt, Principal

Mrs. Amanda Abdelaal, Assistant Principal

Dr. Sarah Brandt, Assistant Principal

### Health Room

Mrs. Sara Troutman, School Nurse

### Guidance

Mrs. Megan Bauer, Guidance Counselor

Mr. Michael Gross, Guidance Counselor

Mrs. Megan Jenkins, Guidance Counselor

Mr. Brian Barone, School Psychologist