

Agenda for the Board of Education Meeting – February 10, 2025
Following the American Civic Hearing

Mission: *The mission of Papillion La Vista Community Schools, an organization dedicated to greatness, is to prepare all students to realize their unique aspirations through rigorous instructional and innovative educational pathways, delivered by highly qualified, passionate educators through bold partnerships with families and community.*

Strategic Alignment: **Goal #1**-Curriculum & Instruction **Goal #2**-Mental Health **Goal #3**-Human Resources or **General Operations**

Nebraska Open Meetings Law: Posted at entrance to room.

Notes Regarding Agenda: The Board will generally follow the sequence of the published agenda but may change the order of items when appropriate and may elect to act on any of the items listed.

I. Call to Order

- A. Pledge of Allegiance
- B. Roll Call
- C. Excused Absences (*Motion Needed*)

II. Communications (*Reports and Celebrations*)

- A. Celebrations: PLSHS Charlee Solomon awarded the Nebraska Gatorade Volleyball Player of the Year
- B. High School Student Council (*only first meeting of the month, high schools rotate*): PLSHS
- C. Reports
 - 1. Superintendent's Report
 - 2. Board Member Reports
- D. Committee Reports
 - 1. Buildings, Grounds, & Finance
 - 2. Human Resources & Student Services
 - 3. Curriculum & Americanism

Public Comment for Items on the Agenda*

Requests to speak to items on the agenda will be heard when the agenda item is presented for discussion

III. Action Items (*Motion Needed*)

- A. Action by Consent
 - 1. Approval of Meeting Agenda
 - 2. Bills
 - 3. Out-of-State Travel
 - 4. Personnel
 - 5. Board Meeting Minutes of January 27, 2025
- B. Policy 1000 – Public Relations & Communications (General Operations)
- C. Springfield Platteview Land Transfer – Belterra Phase 3 (General Operations)
- D. Springfield Platteview Land Transfer – Shadow Creek Phase 1 (General Operations)
- E. Portal Elementary Project Bid (General Operations)

IV. Discussion/Information Items

- A. Mass Communication Vendor (General Operations)
- B. CIP (Continuous Improvement) Visit Update (Goal #1)
- C. Staffing Proposal 2025/26 (Goal #3)
- D. Review Policy 2000 – Administration (General Operations)

V. Public Comment for Items Not on the Agenda*

During this time the Board will listen only to all comments and will not answer questions or engage the speaker as required by the Nebraska Open Meetings Law.

VI. Future Board Calendar

February 11, 2025	Liaison Lunch @ PLECC – 11:10am w/Lisa Wood
February 14, 2025	Liaison Lunch @ Liberty Middle School – 11:30am w/Marcus Madler
February 17, 2025	No School – Staff Development Day
February 17, 2025	Foundation Board Meeting @ 6:00on – Central Office
February 24, 2025	Board of Education Meeting @ 6:00pm - Central Office

VII. Adjournment

The Papillion La Vista Community Schools Board of Education reserves the right to go into Closed Session for purposes in accordance with Nebraska Open Meetings Act NE REV STAT 84-1407 through 1414.

***Public Comment Categories: Items on the Agenda and Items Not on the Agenda:** Comments may take place as provided on this agenda. Individuals wishing to address the Board must complete the appropriate *Guidelines for Public Comment Form* with the date, topic, name, address and organization representing (if appropriate) and give it to the Board Clerk prior to the initial Call to Order. When called upon by the presiding officer, the individual shall proceed to the podium and state their name and address. An individual may not exceed three (3) minutes and total time for all individuals who want to speak shall not exceed 30 minutes per category unless a majority vote of the Board approves extending allocated time. This time for public comment shall not be used to address specific individual student discipline or employee performance issues. Complaint and grievance processes are in place to deal with issues of this nature. Information may also be shared with the Board through email. Contact information is located on the district webpage: <https://www.plcschools.org>

**PAPILLION - LA VISTA SCHOOL DISTRICT
BUILDING/CONSTRUCTION BILL LISTING
FEBURARY 2025**

A&D TECHNICAL SUPPLY CO INC	\$	605.46
AMAZON	\$	91.53
B&H PHOTO & ELECTRONICS CORP	\$	34,612.47
BERINGER CIACCIO DENNELL MABREY INC	\$	159,049.13
BOYD JONES CONSTRUCTION CO	\$	806,209.90
CARDINAL MANUFACTURING	\$	2,851.00
CITY OF PAPILLION	\$	40,001.79
CHURCHICH RECREATION EQUIP	\$	9,460.56
CONEL INC	\$	3,908.00
DIGITAL ASSETS	\$	24,357.98
JTW OMAHA MOVERS INC	\$	2,047.50
LAMP RYNEARSON & ASSOCIATES INC	\$	13,500.00
MACK BROS. GROUNDSKEEPING LLC	\$	15,808.50
MCGRATH RENTCORP	\$	13,795.00
OMAHA PUBLIC POWER DISTRICT	\$	95,291.50
OUTBACK FENCE	\$	44,070.00
THIELE GEOTECH INC	\$	1,636.00
TJ CABLE & UNDERGROUND SVCS LLC	\$	1,890.00
VANWINKLE CONSTRUCTION SERVICES	\$	104,131.80
	\$	1,372,712.66

RETURN TO AGENDA

**PAPILLION-LA VISTA SCHOOL DISTRICT #27
DISBURSEMENT REPORT
JANUARY 2025**

PAYROLL

Net Payroll Expense	\$ 5,573,751.91
P/R Taxes	\$ 1,941,813.36
Retirement ACH	\$ 1,512,658.60
HSA Transfer	\$ 36,883.12

Payroll Expenses	\$ 9,065,106.99

ACCOUNTS PAYABLE

Vendor Checks	\$ 4,197,250.11
Mileage/Reimbursements paid to Staff	\$ 9,650.61

Total Accounts Payable Checks	\$ 4,206,900.72

TOTAL GENERAL FUND \$ 13,272,007.71
=====

RETURN TO AGENDA

157863	1/2/2025	EVELYN DEWITT ELECTRICAL, INC.	\$656.16
157864	1/15/2025	AFLAC	\$631.82
157865	1/15/2025	ASSURITY LIFE INSURANCE COMPANY	\$154.33
157866	1/15/2025	California State Disbursement Unit	\$721.75
157867	1/15/2025	Credit Management Serv-Douglas Cty	\$32.61
157868	1/15/2025	CREDIT MANAGEMENT SERVICES-SARPY	\$220.93
157869	1/15/2025	MIDLAND FUNDING LLC	\$43.44
157870	1/15/2025	Natl Collegiate Student Loan Trust	\$625.55
157871	1/15/2025	NCSPC-WEB	\$2,731.00
157872	1/15/2025	Nebraska Department of Revenue	\$180.62
157873	1/15/2025	PAPILLION LA VISTA COMMUNITY SCHOOL	\$125.00
157874	1/15/2025	PAPILLION-LAVISTA FOUNDATION	\$3,179.92
157875	1/15/2025	PINNACLE BANK	\$42,346.00
157876	1/15/2025	Rehabilitation Specialists	\$353.52
157877	1/15/2025	REVCO SOLUTIONS INC	\$568.61
157878	1/15/2025	SEIU LOCAL 226 DUES	\$1,627.31
157879	1/15/2025	TSA CONSULTING GROUP-REMITTANCE	\$50,142.02
157880	1/15/2025	UNITED WAY OF THE MIDLANDS	\$223.34
157881	1/7/2025	CREDIT MANAGEMENT SERVICES-SARPY	\$220.93
157882	1/7/2025	Jensen, Shena Marie	\$625.55
157883	1/10/2025	360 COMMUNITY SERVICES	\$12,821.76
157884	1/10/2025	AFP CORP.	\$6,630.53
157885	1/10/2025	ALLO HOLDING LLC	\$11,173.89
157886	1/10/2025	AMAZON CAPITAL SERVICES	\$786.14
157887	1/10/2025	B&H PHOTO & ELECTRONICS CORP	\$483.00
157888	1/10/2025	CITY OF PAPILLION - WATER	\$14,212.43
157889	1/10/2025	COLUMN SOFTWARE PBC	\$20.18
157890	1/10/2025	CONTROL SERVICES INC	\$365.00
157891	1/10/2025	CURZON PROMOTIONAL GRAPHICS	\$540.00
157892	1/10/2025	EAKES INC	\$59,584.00
157893	1/10/2025	HAMEVE ENTERPRISES INC	\$106.00
157894	1/10/2025	HD SUPPLY FACILITIES MAINTENANCE	\$248.04
157895	1/10/2025	HUJO PROPERTIES LLC	\$170.00
157896	1/10/2025	MARTHA L PINTO	\$406.90
157897	1/10/2025	MATHESON TRI-GAS INC	\$441.14
157898	1/10/2025	NE COUNCIL OF SCHOOL ADMINISTRATORS	\$190.00
157899	1/10/2025	NEBRASKA ASSOCIATION SCHOOL BOARDS	\$2,160.00
157900	1/10/2025	NEBRASKA SCHOOL PSYCHOLOGIST ASSN	\$110.00
157901	1/10/2025	OFFICE DEPOT INC	\$2,731.59
157902	1/10/2025	OMAHA PUBLIC POWER DISTRICT	\$179,270.38
157903	1/10/2025	ONE STOP BODY SHOP, INC	\$680.00
157904	1/10/2025	PAPILLION SANITATION	\$1,682.51
157905	1/10/2025	PAPILLION TIRE INC	\$4,429.17
157906	1/10/2025	PAPIO TRANSPORT SCHOOL SERVICE INC	\$38,520.00
157907	1/10/2025	PERRY GUTHERY HAASE &	\$325.00
157908	1/10/2025	POPCO INC.	\$70.00
157909	1/10/2025	POPPLERS MUSIC INC	\$65.22

157910	1/10/2025	RENTOKIL NORTH AMERICA INC	\$123.00
157911	1/10/2025	Richards, Brett A	\$67.00
157912	1/10/2025	ROBOTICS ED/COMPETITION FOUNDATION	\$400.00
157913	1/10/2025	SPARQ DATA SOLUTIONS, INC	\$2,600.00
157914	1/10/2025	STERICYCLE, INC	\$285.36
157915	1/10/2025	T-MOBILE USA, INC	\$347.47
157916	1/10/2025	TOBII DYNAVOX LLC	\$65.00
157917	1/10/2025	UNITED PARCEL SERVICE INC.	\$56.20
157918	1/10/2025	WEST MUSIC CO., INC	\$247.05
157919	1/10/2025	WEST OMAHA WINSUPPLY CO.	\$710.68
157920	1/10/2025	WESTLAKE HARDWARE INC	\$283.36
157921	1/13/2025	LA VISTA OFFICE - ARMOR STORAGE	\$230.00
157922	1/14/2025	Rikli, Andrew J	\$67.00
157923	1/17/2025	AFP CORP.	\$6,495.52
157924	1/17/2025	AMAZON CAPITAL SERVICES	\$5,316.52
157925	1/17/2025	APPLE INC.	\$1,067.00
157926	1/17/2025	ATHLETICO EXCEL NEBRASKA LLC	\$720.00
157927	1/17/2025	BIO COMPANY INC	\$370.11
157928	1/17/2025	BLICK ART MATERIALS LLC	\$1,812.42
157929	1/17/2025	BORENSON AND ASSOCIATES INC	\$306.35
157930	1/17/2025	FIRST STUDENT	\$114,456.00
157931	1/17/2025	KENDEL ENTERPRISES INC	\$595.00
157932	1/17/2025	LEXIA LEARNING SYSTEMS LLC	\$414.00
157933	1/17/2025	LOWES HOME CENTERS INCORPORATED	\$1,543.97
157934	1/17/2025	METROPOLITAN UTILITIES DISTRICT	\$6,127.93
157935	1/17/2025	NEBRASKA EDUCATORS RISING	\$750.00
157936	1/17/2025	OMAHA DISCOVERY TRUST	\$460.00
157937	1/17/2025	ONE SOURCE THE BACKGROUND CHECK CO	\$2,499.00
157938	1/17/2025	PAPILLION SANITATION	\$12,240.67
157939	1/17/2025	PAUL A SCHMITT MUSIC COMPANY	\$276.00
157940	1/17/2025	POWERSCHOOL HOLDINGS, LLC	\$10,944.00
157941	1/17/2025	RENTOKIL NORTH AMERICA INC	\$1,801.42
157942	1/17/2025	Sauer, Julee Renee	\$13.80
157943	1/17/2025	UNITED PARCEL SERVICE INC.	\$36.00
157944	1/17/2025	WESTLAKE HARDWARE INC	\$52.67
157945	1/17/2025	WESTSIDE HIGH SCHOOL	\$500.00
157946	1/17/2025	WOODRIVER ENERGY, LLC	\$77,669.44
157947	1/17/2025	AMAZON CAPITAL SERVICES	\$793.02
157948	1/22/2025	AMERITAS LIFE INSURANCE CORP	\$13,406.88
157949	1/22/2025	BLUE CROSS BLUE SHIELD OF NE	\$1,812,309.24
157950	1/22/2025	Gomez Angeles, Martha Alicia	\$234.42
157951	1/22/2025	MADISON NATIONAL LIFE	\$33,367.20
157952	1/23/2025	MCMULLEN FORD INC	\$92,994.00
157953	1/23/2025	U.S. POSTMASTER #2203	\$10,000.00
157954	1/24/2025	ACCESS TECHNOLOGIES INC - MN	\$21,432.54
157955	1/24/2025	ADAM BOEHMER	\$180.00
157956	1/24/2025	AMAZON CAPITAL SERVICES	\$1,321.26

157957	1/24/2025	APPLE INC.	\$1,190.00
157958	1/24/2025	BOARD OF REGENTS OF THE UNIV OF NEBRASKA	\$628.00
157959	1/24/2025	COLUMN SOFTWARE PBC	\$40.91
157960	1/24/2025	DIETZE MUSIC INC	\$539.40
157961	1/24/2025	Dohm, Anna Margaret	\$11.52
157962	1/24/2025	FIRST STUDENT	\$440.00
157963	1/24/2025	JOHN VEJVODA	\$90.00
157964	1/24/2025	JOSEPH DANEFF JR	\$90.00
157965	1/24/2025	LA VISTA OFFICE - ARMOR STORAGE	\$250.00
157966	1/24/2025	METROPOLITAN UTILITIES DISTRICT	\$1,527.57
157967	1/24/2025	MICHAEL COGLAN	\$175.00
157968	1/24/2025	OFFICE DEPOT INC	\$1,501.45
157969	1/24/2025	PAPILLION SANITATION	\$439.35
157970	1/24/2025	PITNEY BOWES BANK INC	\$3,300.00
157971	1/24/2025	SPARTAN STORES LLC	\$168.39
157972	1/24/2025	STERICYCLE, INC	\$1,369.79
157973	1/24/2025	SWANK MOTION PICTURES, INC.	\$7,386.00
157974	1/24/2025	TALX UCM SERVICES INC	\$535.85
157975	1/24/2025	UNITED PARCEL SERVICE INC.	\$36.00
157976	1/24/2025	VOSS ELECTRIC CO.	\$158.40
157977	1/27/2025	PAPILLION LA VISTA COMMUNITY SCHOOL	\$419,826.00
157978	1/27/2025	PINNACLE BANK - VISA	\$14,119.14
157979	1/28/2025	SAM'S CLUB / SYNCHRONY BANK	\$434.64
157980	1/28/2025	SAM'S CLUB / SYNCHRONY BANK	\$165.24
157981	1/28/2025	ACCESS TECHNOLOGIES INC - MN	\$28,778.02
157982	1/28/2025	PAPILLION LA VISTA COMMUNITY SCHOOL	\$10,339.80
157983	1/28/2025	PINNACLE BANK - VISA	\$1,032.40
157984	1/29/2025	PINNACLE BANK - VISA	\$9,855.72
157985	1/29/2025	ACCESS TECHNOLOGIES INC - MN	\$21,532.42
158061	1/30/2025	ODP BUSINESS SOLUTIONS LLC	\$31.30
158062	1/30/2025	OFFICE DEPOT INC	\$4,445.18
158063	1/31/2025	AFP CORP.	\$4,616.12
158064	1/31/2025	AUTO GLASS PRO OF OMAHA	\$1,533.00
158065	1/31/2025	CATALYST PUBLIC AFFAIRS, INC	\$3,250.00
158066	1/31/2025	DIGITAL DOT SYSTEMS INCORPORATED	\$90.00
158067	1/31/2025	DONALD C HAND	\$90.00
158068	1/31/2025	JOSEPH DANEFF JR	\$90.00
158069	1/31/2025	MENARD INC	\$451.86
158070	1/31/2025	MENARDS - RALSTON	\$995.81
158071	1/31/2025	METROPOLITAN UTILITIES DISTRICT	\$1,126.26
158072	1/31/2025	NEBRASKA METHODISTHEALTH SYSTEM INC	\$4,914.00
158073	1/31/2025	PAPILLION SANITATION	\$1,089.51
158074	1/31/2025	STERICYCLE, INC	\$288.02
158075	1/31/2025	VPU FAYETTEVILLE LLC	\$9,369.22
158076	1/31/2025	WESTLAKE HARDWARE INC	\$22.99
158077	1/31/2025	360 COMMUNITY SERVICES	\$14,958.72
158078	1/31/2025	A 1 UNITED HEATING AND AC INC	\$482.50

158079	1/31/2025	ACCESS TECHNOLOGIES INC - IA	\$12,990.00
158080	1/31/2025	ACCESS TECHNOLOGIES INC - MN	\$25,450.71
158081	1/31/2025	ACTION BATTERIES	\$1,165.05
158082	1/31/2025	ADVENTURE ENTERPRISES LLC	\$1,852.00
158083	1/31/2025	AFP CORP.	\$2,515.00
158084	1/31/2025	AGRIVISION GROUP LLC	\$535.81
158085	1/31/2025	ALL MAKES OFFICE EQUIPMENT	\$2,716.02
158086	1/31/2025	ALMA LLC	\$1,391.04
158087	1/31/2025	ALYSSA MCNURLIN	\$540.00
158088	1/31/2025	AMAZON CAPITAL SERVICES	\$13,052.31
158089	1/31/2025	ASCD	\$39.00
158090	1/31/2025	AUTO GLASS PRO OF OMAHA	\$250.00
158091	1/31/2025	B G PETERSON COMPANY	\$1,767.77
158092	1/31/2025	BARTON SOLVENTS INCORPORATED	\$2,010.58
158093	1/31/2025	Blair, Merry Lee	\$25.96
158094	1/31/2025	CAMELOT TRANSPORTATION INC	\$15,570.00
158095	1/31/2025	CATALYST PUBLIC AFFAIRS, INC	\$3,550.00
158096	1/31/2025	CEHS BUSINESS CENTER - UNIV OF NE	\$940.00
158097	1/31/2025	CERRIS SYSTEMS NORTH CENTRAL, INC.	\$630.00
158098	1/31/2025	CHESTERMAN COMPANY	\$478.14
158099	1/31/2025	CHILDRENS RESPITE CARE CENTER INC	\$385.00
158100	1/31/2025	COLUMN SOFTWARE PBC	\$221.98
158101	1/31/2025	CONEL INC	\$6,177.00
158102	1/31/2025	CONSOLIDATED ELEC DISTRIBUTORS, INC_2	\$238.70
158103	1/31/2025	CONTROL DEPOT INC	\$1,040.58
158104	1/31/2025	CONTROL SERVICES INC	\$947.75
158105	1/31/2025	CONTROLTEMP, INC	\$261.00
158106	1/31/2025	CONVENIENT WATER TREATMENT INC	\$1,834.00
158107	1/31/2025	CURRICULUM ASSOCIATES	\$194.88
158108	1/31/2025	D.M.G INC.	\$426.97
158109	1/31/2025	DATA RECOGNITION CORPORATION	\$2,472.40
158110	1/31/2025	DEMCO INC	\$4,122.04
158111	1/31/2025	DIGITAL ASSETS LLC	\$18,948.27
158112	1/31/2025	DOCUMENT FINISHING RESOURCES INC	\$210.00
158113	1/31/2025	EDUCATIONAL SERVICE UNIT #3	\$48,667.94
158114	1/31/2025	EGAN SUPPLY COMPANY	\$17,817.98
158115	1/31/2025	ELECTRONIC SOUND INC	\$187.50
158116	1/31/2025	EVELYN DEWITT ELECTRICAL, INC.	\$4,022.87
158117	1/31/2025	EYMAN PLUMBING	\$4,368.48
158118	1/31/2025	FAITH PRESBYTERIAN CHURCH	\$4,000.00
158119	1/31/2025	FAMILY CONNECTIONS, INC	\$1,066.98
158120	1/31/2025	FATHER FLANAGAN BOYS HOME INC	\$4,500.00
158121	1/31/2025	FILTER SHOP	\$12,635.74
158122	1/31/2025	FIRST STUDENT	\$24,052.40
158123	1/31/2025	FIRST WIRELESS, INC	\$514.34
158124	1/31/2025	FOLLETT CONTENT SOLUTIONS, LLC	\$316.47
158125	1/31/2025	FUN AND FUNCTION LLC	\$315.71

158126	1/31/2025	GARTNER & ASSOCIATES CO INC	\$175.00
158127	1/31/2025	GENERAL PARTS LLC	\$1,231.40
158128	1/31/2025	GOODWILL INDUSTRIES, INC.	\$1,500.00
158129	1/31/2025	GRAINGER	\$281.42
158130	1/31/2025	HATCHER MOBILE SERVICES LLC	\$1,407.96
158131	1/31/2025	HD SUPPLY FACILITIES MAINTENANCE	\$1,561.02
158132	1/31/2025	HEARTLAND FOUNDATION	\$10,485.00
158133	1/31/2025	HOLT WOODWORKING INC.	\$419.70
158134	1/31/2025	HONG T HUYNH	\$154.25
158135	1/31/2025	HOPE COLLABORATIVE	\$150.00
158136	1/31/2025	HOT SHOPS ART FOUNDATION	\$379.60
158137	1/31/2025	IDN H HOFFMAN INC	\$162.56
158138	1/31/2025	IMPERIAL ROOF SYSTEMS COMPANY	\$582.39
158139	1/31/2025	INTERMOUNTAIN LOCK AND SECURITY SUPPLY	\$364.42
158140	1/31/2025	INTERMOUNTAIN WOOD PRODUCTS	\$792.55
158141	1/31/2025	IXL LEARNING INC	\$250.00
158142	1/31/2025	J W PEPPER & SON INC	\$329.39
158143	1/31/2025	J&R DOOR	\$450.00
158144	1/31/2025	JENYFER GONZALEZ	\$532.50
158145	1/31/2025	JESSICA JENSEN	\$77.05
158146	1/31/2025	JOHNSON HARDWARE COMPANY LLC	\$185.03
158147	1/31/2025	JOSEY THOMAS AARON	\$460.00
158148	1/31/2025	JOURNEYED.COM INC	\$68,806.08
158149	1/31/2025	KANEEN SMYER	\$40.20
158150	1/31/2025	KBC, INC.	\$10,688.06
158151	1/31/2025	KSB SCHOOL LAW PC LLC	\$5,436.95
158152	1/31/2025	LAKESHORE LEARNING MATERIALS	\$91.99
158153	1/31/2025	LANGUAGE LINE SERVICES INC	\$118.04
158154	1/31/2025	LATIMER ASSOCIATES INC.	\$1,040.00
158155	1/31/2025	LEE BHM CORP	\$188.99
158156	1/31/2025	Lewis, Kaitlin Marie	\$75.00
158157	1/31/2025	LORI KIRSCH	\$540.00
158158	1/31/2025	MARTHA L PINTO	\$3,382.38
158159	1/31/2025	MAX ABILITY THERAPY SERVICES	\$314.22
158160	1/31/2025	MAXIM HEALTHCARE SERVICES HOLDINGS, INC	\$5,500.80
158161	1/31/2025	MCGRAW-HILL EDUCATION, INC	\$2,493.18
158162	1/31/2025	MECHANICAL SALES INC	\$2,698.00
158163	1/31/2025	MECHANICAL SALES PARTS INC	\$4,005.92
158164	1/31/2025	MECHANICAL, INC	\$45,700.02
158165	1/31/2025	MIDWEST PLASTICS INCORPORATED	\$25.00
158166	1/31/2025	MIDWEST SOUND & LIGHTING, INC	\$87.60
158167	1/31/2025	NASB ALICAP	\$20,781.00
158168	1/31/2025	NASCD	\$40.00
158169	1/31/2025	NEBRASKA ASSOCIATION SCHOOL BOARDS	\$10,236.00
158170	1/31/2025	NEBRASKA DEPARTMENT OF EDUCATION	\$20.00
158171	1/31/2025	NEBRASKA HOSA_2	\$90.00
158172	1/31/2025	NEBRASKA IOWA SUPPLY COMPANY	\$17,358.70

158173	1/31/2025	NEBRASKA STATE BANDMASTERS ASSOC	\$90.00
158174	1/31/2025	NOEL ADJE	\$658.47
158175	1/31/2025	O'REILLY AUTOMOTIVE STORES, INC.	\$296.61
158176	1/31/2025	OCCUPATIONAL HEALTH CENTERS OF NE	\$756.00
158177	1/31/2025	OFFUTT ADVISORY COUNCIL	\$300.00
158178	1/31/2025	OMAHA STAGE EQUIPMENT INC.	\$490.00
158179	1/31/2025	ONE CALL CONCEPTS INC	\$22.78
158180	1/31/2025	ONE STOP BODY SHOP, INC	\$100.00
158181	1/31/2025	PAINTIN PLACE CERAMICS INC	\$245.00
158182	1/31/2025	PAPILLION LA VISTA PUBLIC SCHOOLS	\$108.75
158183	1/31/2025	PAPILLION TIRE INC	\$22,267.12
158184	1/31/2025	PAUL A SCHMITT MUSIC COMPANY	\$381.57
158185	1/31/2025	PEARSON	\$441.80
158186	1/31/2025	PRA'SHAE CRONIN	\$28.61
158187	1/31/2025	PURELAND SUPPLY LLC	\$99.40
158188	1/31/2025	RAINBOW GLASS AND SUPPLY INC	\$10,902.37
158189	1/31/2025	READ NATURALLY INC	\$1,170.00
158190	1/31/2025	REGION II PRINCIPALS	\$90.00
158191	1/31/2025	REMEDY ROAD LLC	\$4,412.52
158192	1/31/2025	SARPY COUNTY ELECTION COMMISSION	\$6,282.89
158193	1/31/2025	SARPY COUNTY JUVENILE	\$4,405.78
158194	1/31/2025	Scholting, Lindsey M	\$128.99
158195	1/31/2025	SCHOOL SPECIALTY, LLC	\$202.65
158196	1/31/2025	SECURLY, INC	\$19,430.00
158197	1/31/2025	SHERWIN WILLIAMS	\$164.17
158198	1/31/2025	STERLING COMPUTERS CORPORATION	\$395.00
158199	1/31/2025	STEVEN PELSTER	\$75.04
158200	1/31/2025	TARIN COLLINS	\$262.64
158201	1/31/2025	THE PROPHET CORPORATION	\$361.16
158202	1/31/2025	THE STEPPING STONES GROUP LLC	\$19,668.83
158203	1/31/2025	TRANE U.S. INC	\$3,442.78
158204	1/31/2025	TULIP DAYCARE III LLC.	\$50.00
158205	1/31/2025	TY'S OUTDOOR POWER & SERVICE INC	\$17,089.28
158206	1/31/2025	ULINE INC	\$919.12
158207	1/31/2025	UNIV OF NE MEDICAL CENTER	\$57,102.00
158208	1/31/2025	US OMNI & TSACG COMPLIANCE SVCS INC	\$223.63
158209	1/31/2025	VISTA HIGHER LEARNING	\$3,719.25
158210	1/31/2025	VOSS ELECTRIC CO.	\$396.00
158211	1/31/2025	WEST OMAHA WINSUPPLY CO.	\$5,531.93
158212	1/31/2025	WOLSELEY INVESTMENTS INC	\$18.48
158213	1/31/2025	ZOBEYDA ESPINOZA	\$15.19
158214	1/31/2025	Bureau of Education & Research	\$595.00
158215	1/31/2025	ELECTRONIC SOUND INC	\$125.00
158216	1/31/2025	J W PEPPER & SON INC	\$61.00
158217	1/31/2025	LITERACY RESOURCES LLC	\$99.00
158218	1/31/2025	METROPOLITAN COMMUNITY COLLEGE	\$2,102.39
158219	1/31/2025	THE PROPHET CORPORATION	\$549.44

158220	1/31/2025	DAVE LANDON	\$90.00
158221	1/31/2025	DONALD C HAND	\$90.00
158222	1/31/2025	GRAFTON & ASSOCIATES INC	\$450.00
158223	1/31/2025	NEBRASKA DEPARTMENT OF LABOR	\$5,392.00
158224	1/31/2025	PITNEY BOWES BANK INC	\$48.56
158225	1/31/2025	UNITED PARCEL SERVICE INC.	\$154.56
158226	1/31/2025	DOUGLAS COUNTY TREASURER	\$1,447.56
158227	1/31/2025	FIRST STUDENT	\$302.50
158228	1/31/2025	HD SUPPLY FACILITIES MAINTENANCE	\$184.50
158229	1/31/2025	JOHNSON HARDWARE COMPANY LLC	\$580.20
158230	1/31/2025	AMAZON CAPITAL SERVICES	\$132.61
158231	1/31/2025	ANGELA HANSON	\$72.35
158232	1/31/2025	BIMER LLC	\$260.05
158233	1/31/2025	BRIAN PLESKACH	\$23.20
158234	1/31/2025	CHESTERMAN COMPANY	\$11,023.11
158235	1/31/2025	DAOKA COLLINS	\$56.75
158236	1/31/2025	ECOLAB	\$3,390.94
158237	1/31/2025	EGAN SUPPLY COMPANY	\$506.48
158238	1/31/2025	EYMAN PLUMBING	\$3,986.00
158239	1/31/2025	GENERAL PARTS LLC	\$1,788.45
158240	1/31/2025	GREENBERG FRUIT COMPANY	\$34,223.53
158241	1/31/2025	HATCHER MOBILE SERVICES LLC	\$1,142.36
158242	1/31/2025	HILAND DAIRY FOODS COMPANY, LLC	\$27,433.81
158243	1/31/2025	LINEAGE LOGISTICS HOLDINGS LLC	\$853.62
158244	1/31/2025	MECHANICAL, INC	\$3,079.83
158245	1/31/2025	MID-STATES UTILITY TRAILER SALES	\$328.38
158246	1/31/2025	NEBRASKA FURNITURE MART	\$3,144.97
158247	1/31/2025	NEBRASKA STAR BEEF CO LLC	\$4,190.40
158248	1/31/2025	PERFORMANCE FOOD GROUP INC	\$146,844.07
158249	1/31/2025	PLATTE COUNTY PIZZA HUT INC	\$16,802.00
158250	1/31/2025	ROTELLAS ITALIAN BAKERY INC	\$6,099.31
158251	1/31/2025	STEFANI MATTSON	\$15.25
158252	1/31/2025	STEPHANIE BLACKWELL	\$13.90
158253	1/31/2025	SYSCO LINCOLN	\$12,288.19

**PAPILLION LA VISTA COMMUNITY SCHOOLS #27
MONTHLY STAFF TRAVEL REQUEST
BOARD OF EDUCATION
February 10, 2025**

STAFF MEMBER	DATE AND DESTINATION	CONFERENCE / WORKSHOP	ESTIMATED REGISTRATION / TRANSPORTATION / LODGING / MEALS	ESTIMATED SUB COST
Ryan Stieren	February 21-23, 2025 St. Louis, MO	Glazier Football Coaches Clinic	\$0.00	\$180.00 (A)
OUT-OF STATE TRAVEL FOR STUDENTS AND STAFF Estimated General Fund Expenditures				
Adam Schlismann, Jeff Nichols, 2 Chaperones, 35 Students	March 21-22, 2025 Sioux Falls, SD	JROTC Athletics & Drill Competition	\$2,071 (G)	\$180.00 (G)
Upward Bound: Charles Kaup, Ciara Molderhauer, Skyler Wendling, Natividad Ledesma, Rachael Kalhorn, 20 Students	February 27, 2025 Ames, IA	Iowa State University College	\$0.00	\$0.00

Expenses are estimated until travel is completed and bills submitted.

[Return to](#)

Agenda

(D) District (G) Grant (A) Activity (O) Other

**PAPILLION LA VISTA COMMUNITY SCHOOLS #27
PERSONNEL ACTIONS
BOARD OF EDUCATION
February 10, 2025**

Resignations

Alexander Strom	Business	Papillion La Vista High School
Amanda Heath	Special Education	Portal
Katie Kreiger	Physical Education	Papillion La Vista High School
Kim Parks	Special Education	Trumble Park
Erin Rudloff	Art	Hickory Hill/Tara Heights
Trenton Steele	Secondary Director of Human Resources and Student Services	
Angela Wilder	Counselor	La Vista West

New Contracts

Arabella Hoffman	Special Education	La Vista West
------------------	-------------------	---------------

Arabella will receive her Bachelors from the University of Nebraska Lincoln May 2025. Arabella is currently completing her student teaching with PLCS.

Sean McLaughlin	Social Studies	Papillion La Vista High School
-----------------	----------------	--------------------------------

Sean received his Masters from Concordia University in December 2024. He is currently working at Gretna East High School as a German Teacher. Sean previously worked with PLCS as a German Teacher and Social Studies Teacher. Additionally, Sean will be the Head Football Coach at Papillion La Vista High School.

Jared Minnick	Science	Papillion La Vista South High School
---------------	---------	--------------------------------------

Jared received his Bachelors from Wayne State College in 2022. He is currently a Science teacher with West Point - Beemer Public Schools.

Katie Nelson	5th Grade	Prairie Queen
--------------	-----------	---------------

Katie received her Masters from the University of Nebraska Omaha in 2018. She completed her student teaching and is currently working as a substitute teacher with PLCS.

Korisa Schoepk	Special Education	TBD
----------------	-------------------	-----

Korisa received her Masters from Augustana University in December 2016. She is currently a Special Education teacher with Bellevue Public Schools.

Melissa Stolley	Director of Student Services	Papillion La Vista Community Schools
-----------------	------------------------------	--------------------------------------

Missy received her Education Specialist from Doane University in December 2024. She is currently the Director of Student Services and Special Education at Ralston Public Schools. Previously Missy has served as a Dean of Students, Special Education Teacher and a Behavior Specialist.

PAPILLION LA VISTA COMMUNITY SCHOOL DISTRICT #27
Board of Education Proceedings
January 27, 2025

The Board of Education of the School District of Papillion La Vista, in the County of Sarpy, in the State of Nebraska, met in open and public session at 6:00 p.m., Monday, January 27, 2025. The meeting was held at the Papillion La Vista Community Schools Administration Office, 420 South Washington Street, Papillion, Nebraska.

Notice of the meeting was provided in advance by publication in the *Sarpy Times*, January 22, 2025. Notice of the meeting was simultaneously given to all members of the Board of Education. Their acknowledgment of receipt of the agenda is maintained at the Papillion La Vista Community Schools Administration Office. The proceedings, hereafter shown, were taken while the convened meeting was open to the attendance of the public.

Call to Order

Board Vice President Brian Lodes called the meeting to order and publicly stated a copy of the Nebraska Open Meetings Law is posted at the entrance to the Board Room. Mr. Lodes led the group in the Pledge of Allegiance.

Roll call was taken. Board members who were present: Mr. Brian Lodes, Elizabeth Butler, Mr. Marcus Madler, and Mr. Skip Bailey. There were no comments from the Board or audience.

A motion was made by Mr. Bailey and seconded by Mr. Madler to approve the absence of Ms. SuAnn Witt and Ms. Lisa Wood from the January 27, 2025, board meeting. Roll call vote was taken. Ayes: Butler, Madler, Lodes, and Bailey. Nays: None. Motioned carried.

Communication

There were no public testifiers.

Recognition

Dr. Rikli recognized Dr. Christopher Villarreal as the NSPRA (National School Public Relations Association) Emerging Leader of the Year. Not able to attend the meeting was PLSHS Charlee Solomon who was selected at the Nebraska Gatorade Volleyball player of the year.

Military Advisory

Colonel Patrick Kolesiak shared the monthly Offutt Air Force Base updates. Offutt will be holding a Combat Readiness inspection the week of March 31 through April 4. Ms. Jenny Miller has accepted the position as the new School Liaison for the district and Offutt. Colonel Kolesiak thanked the Board for discussing the resolution that is on the agenda. The Resolution of the Board of Education Supporting Military-Connected Families is one step to help the district schools become a Purple Star School.

Superintendent's Report

Dr. Rikli provided a report of highlights and activities he has attended this past month. Dr. Rikli thanked the community for attending the meeting and the community members that are watching the meeting on YouTube. The District's NDE (Nebraska Department Education) External Accreditation visit was held last week. A detailed report will be given at a future board meeting.

The Community Closet held a family event January 25 at La Vista Middle School. There were over 105 families that attended with 6000 items donated.

Dr. Rikli welcomed Ms. Ann Burmeister as the new Rumsey Station principal, Ms. Stephanie Scheller as Dr. Rikli's new Executive Assistant, and Ms. Missy Stolley as the Student Service Director.

Dr. Rikli shared that he and Mr. Richards had met with Governor Pillen to discuss school finance, and both attended the Legislative Conference.

Dr. Rikli thanked our Board of Education for their service to the district. Yearly, we have a Board Appreciation week that is celebrated. A video was played thanking each of the Board members for their service.

Board Comments

Mr. Bailey and Mr. Madler attended the External Accreditation Team welcoming dinner on Sunday, January 19. Mr. Bailey thanked the individuals who volunteer at the Community Closet.

Mr. Madler thanked all the staff and students for their cards and thank yous. He attended the Legislative Conference in Lincoln. Mr. Madler as the NASB Legislative representative spent several hours on Sunday going over the new bills that were submitted.

Ms. Butler attended the Buildings and Grounds Subcommittee meeting. She attended a Liaison Lunch at Trumble Park.

Mr. Lodes attended the Professional Boundaries presentation that was presented by Ms. Karen Haase.

Committee Reports:

- Building & Grounds & Finance: Mr. Madler reported the committee had met. Discussion items included the Military resolution, Bell project, SRO, and the Liberty MS traffic study.
- HR & Student Services Committee: Mr. Lodes reported the committee had not met.
- Curriculum and Instruction Committee: Mr. Bailey reported the committee had not met.

Action Items – Monthly Business

A motion was made by Mr. Bailey and seconded by Mr. Madler to approve the Action by Consent Items: The meeting agenda, finance, out of state travel and personnel, and board meeting minutes of January 13, 2025, as presented. There were no comments from the Board or audience. Roll call vote was taken. Ayes: Madler, Lodes, Bailey, and Butler. Nays: None. The motion carried.

A motion was made by Mr. Madler and seconded by Ms. Butler to approve the 2025-26 Teacher Negotiated Agreement reflecting a 4.69% total package including vertical and horizontal movement, an increase of \$950 on the base salary bringing the base to \$40,750, and all other provisions of the contract as presented. Mr. Bailey thanked PLEA and the HR staff for their work on the contract. Mr. Madler asked Mr. Richards if the budget could accommodate the new contract. Mr. Richards replied that we would have to bring in additional funding this summer, but he was confident the district can make it work. There were no comments from the audience. Roll call vote was taken. Ayes: Lodes, Bailey, Butler, and Madler. Nays: None. The motion carried.

A motion was made by Mr. Bailey and seconded by Mr. Madler to accept the resolution supporting the Military Families and Children as presented. Mr. Bailey asked Dr. Villarreal to explain additional ways that our schools can help families. There were no comments from the audience. Roll call vote was taken. Ayes: Bailey, Butler, Madler, and Lodes. Nays: None. The motion carried.

A motion was made by Mr. Madler and seconded by Ms. Butler to (1) approve the lump sum bid and authorize and approve the construction contract with Genesis Contracting Group for the low bid amount of \$2,889,500 and (2) delegates authority to and authorizes, approves and directs the President of the Board of Education, Superintendent of Schools, Assistant Superintendent of Business Services or a designee for the school district to sign, execute and deliver such construction contract, sign and approve any change orders, retain necessary

professionals for assistance, pay the contract price, approve change order increases, and expenses related to the construction project and site preparation work and take all other action necessary to complete any requirements or obligations under the construction project and contract. Mr. Madler asked how long this project will take to complete. Mr. Richards replied this is a two-summer project, starting this summer. There were no comments from the audience. Roll call vote was taken. Ayes: Bailey, Butler, Madler, and Lodes. Nays: None. The motion carried.

Discussion/Information Items

The district's lobbyist, Tim Gay from Catalyst Public Affairs, provided an ongoing list of bills that the district will be following during the 109th Legislature session. There were 715 bills introduced for 90-day session. Mr. Gay shared that there were 19 new Senators sworn in and Senator Arch was reelected as the speaker. Mr. Gay invited the Board to attend future legislative hearings.

Mr. Richards brought to the Board a new proposal. The Papillion La Vista Community Schools and Springfield Platteview Community Schools developed an agreement in December 2015 that would allow a transfer of specified land into the Papillion La Vista Community Schools District. The transfer requires approval by both School Boards and the State Reorganization Committee. The Reorganization Plan, once approved by both districts, would provide the necessary documents for the State Reorganization Committee to review and make a recommendation on the transfer of the identified property from the Springfield Platteview Community Schools to the Papillion La Vista Community Schools. The Belterra property consists of approximately 51.238 acres and is generally located on the east side of 120th St. and north of Schram Road area. The Shadow Creek property consists of approximately 46.431 acres and is generally located west of 84th St. and north of Capehart Road and south of Schram Road.

Mr. Pat Carson from BCDM shared an update on the 2023 bond projects. There were 16 projects identified on the approved bond with 13 of them under contract. There are three pending projects: Portal, Walnut Creek, and Patriot. Mr. Carson shared that the projects are ahead of schedule.

Dr. Villarreal brought the proposed changes for the Policy 1000-Public Relations & Communications to the Board for review. Policy 1001, 1003, 1101, 1102, 1404, and 1405 have minor changes. The Board will take action at the February 10 meeting.

Board Vice President Lodes reviewed the future board calendar.
Board Vice President Lodes adjourned the meeting at 7:17p.m.

Lisa Wood, Secretary
Papillion La Vista Community School District
Board of Education

Subject: Policy 1000 Series – Public Relations and Communications

Meeting Date: February 10, 2025

Prior Meeting Discussion Date: January 13, 2025 and January 27, 2025, Board Meeting

Department: Communications

Action Desired: Approval X Discussion _____ Information Only _____

Background:

January is designated as the month for review of *Series 1000 – Public Relations and Communications* board policies. Board members were asked to review the policy series as posted on the district website.

- Policy 1001 - Notice of Nondiscrimination – Move designated personnel section to Procedure 1001
- Policy 1003 - Fire Departments – Reference building emergency operations plan (EOP) for associated procedures
- Policy 1101 - Goals of Communications with the Public – change “Board subcommittee” to “Board standing committee”
- Policy 1102 - District Communications – Rephrase “communication plan” to emphasize regular and ongoing communication
- Policy 1401 - Public Participation in the Schools – Revise for grammar/clarity
- Policy 1405 - Solicitation in the Schools – Add cross-reference to relevant policies

Recommendation: Motion to accept Policy 1000 – Public Relations and Communications changes to policies #1001, 1003, 1101, 1102, 1401, and 1405 as presented.

Responsible Person: Dr. Christopher Villarreal

Superintendent’s Approval _____

 Signature

RETURN TO AGENDA

Series Name: 1000 - Public Relations and Communications

Topic: 1000 - Community/Educational Agency Relations

Policy: 1001 Notice of Nondiscrimination

The Papillion La Vista Community Schools (hereinafter referred to as "School District") does not discriminate on the basis of prohibited factors in employment and educational programs/activities. The School District affirmatively strives to provide equal opportunity for all as required by:

Title VI of the Civil Rights Act of 1964 - prohibits discrimination on the basis of race, color, religion, or national origin

Title VII of the Civil Rights Act of 1964 as amended - prohibits discrimination in employment on the basis of race, color, religion, sex, or national origin

Title IX of the Education Amendments of 1972 - prohibits discrimination on the basis of sex

Age Discrimination in Employment Act of 1967 (ADEA) as amended - prohibits discrimination on the basis of age with respect to individuals who are at least 40

The Equal Pay Act of 1963 as amended - prohibits sex discrimination in payment of wages to women and men performing substantially equal work in the same establishment

Section 504 of the Rehabilitation Act of 1973 - prohibits discrimination against the disabled

Americans with Disabilities Act of 1990 (ADA) - prohibits discrimination against individuals with disabilities in employment, public service, public accommodations and telecommunications

The Family and Medical Leave Act of 1993 (FMLA) - requires covered employers to provide up to 12 weeks of unpaid, job-protected leave to "eligible" employees for certain family and medical reasons

The Pregnancy Discrimination Act of 1978 - prohibits discrimination in employment on the basis of pregnancy, childbirth, or related medical conditions

The Uniformed Services Employment and Reemployment Rights Act (USERRA) – provides job protections and reemployment rights to military reservists and National Guard members called to active duty

The Boy Scouts of America Equal Access Act which prohibits discrimination against groups that wish to access district facilities

The Nebraska Fair Employment Practice Act (FEPA) – prohibits employment discrimination on the basis of race, color, national origin, religion, sex (including pregnancy), disability, marital status, and retaliation

Nebraska Age Discrimination in Employment Act (Age Act) – prohibits employment discrimination on the basis of age for those individuals who are over 40 years of age

The Equal Pay Act of Nebraska – prohibits discriminatory wage practices based on sex

The Nebraska Equal Opportunity in Education Act – prohibits discrimination on the basis of sex (including pregnancy) by any educational institution

Veterans Preference Law (NEB. REV. STAT §§ 48-225 to 48-231) - stipulates categorical preferences for employment for military veterans and for the spouses of disabled veterans

Additional School Board policies prohibit harassment and/or discrimination against students, employees, or patrons on the basis of sex, race, color, ethnic or national origin, religion, marital status, disability, age, pregnancy, and any other legally prohibited basis. Retaliation for engaging in a protected activity is also prohibited.

Any person who believes she or he has been discriminated against, denied a benefit, or excluded from participation in any district education program or activity may file a complaint using the district's complaint procedures.

The following persons have been designated to handle inquiries regarding the non-discrimination policies:

Students: Dr. Trent Steele, Director of Secondary Human Resources and Student Services, 420 South Washington Street, Papillion, NE 68046 (402) 537-6214 (trent.steele@plcschools.org).

Employees and Others: Dr. Kati Settles, Assistant Superintendent Human Resources, 420 South Washington Street, Papillion, NE 68046 (402) 537-6204 (kati.settles@plcschools.org).

Complaints or concerns involving discrimination or needs for accommodation or access should be addressed to the appropriate Coordinator. For further information about anti-discrimination laws and regulations, or to file a complaint of discrimination with the Office for Civil Rights in the U.S. Department of Education (OCR), please contact OCR at One Petticoat Lane, 1010 Walnut Street, #320, Kansas City, Missouri 64106, (816) 268-0550 (voice), or (877) 521-2172 (telecommunications device for the deaf), or email ocr.kansascity@ed.gov.

Procedure 1001

The Papillion La Vista Community Schools uses the following nondiscrimination statement:

The Papillion La Vista Community School District does not discriminate on the basis of race, color, national origin, sex, disability, religion, age or other protected status in its programs and activities and provides equal access to the Boy Scouts and other designated youth groups. The following persons have been designated to handle inquiries regarding the non-discrimination policies: Students: Dr. Trent Steele, Director of Secondary Human Resources and Student Services, 420 South Washington Street, Papillion, NE 68046 (402) 537-6214 (trent.steele@plcschools.org). Employees and Others: Dr. Kati Settles, Assistant Superintendent Human Resources, 420 South Washington Street, Papillion, NE 68046 (402) 537-6206 (kati.settles@plcschools.org). Complaints or concerns involving discrimination or needs for accommodation or access should be addressed to the appropriate Coordinator. For further information about anti-discrimination laws and regulations, or to file a complaint of discrimination with the Office for Civil Rights in the U.S. Department of Education (OCR), please contact OCR at One Petticoat Lane, 1010 Walnut Street #320, Kansas City, Missouri 64106, (816) 268-0550 (voice), or (877) 521-2172 (telecommunications device for the deaf), or ocr.kansascity@ed.gov.

In accordance with recommendations made by the US Department of Education the above statement will be included in all newsletters and district publications.

Series Name: 1000 - Public Relations and Communications

Topic: 1000 - Community/Educational Agency Relations

Policy: 1003 Fire Departments

It shall be the responsibility of each building principal to establish and maintain good relationships with the local fire departments, work with the building's faculty in determining the nature and time of fire department participation in the school's program, and coordinate and supervise any school fire department activity.

Procedures for school staff to follow in regards to required fire drills, fire prevention and building evacuation activities are available in each building's emergency operations plan (EOP).

Series Name: 1000 - Public Relations and Communications

Topic: 1100 - Principles and Objectives for Community Relations

Policy: 1101 Goals of Communications with the Public

The Board desires that two-way communication always remains open between the school system and citizens of the District. The Board will attempt to operate schools that reflect the public's desires and wishes. It will do its best to keep patrons aware of district activities. Individual board members will refer complaints, suggestions and constructive criticism about operational matters directly to the Superintendent for consideration and action. Comments affecting policy will be referred to the appropriate Board standing committee to determine if it needs to be placed on the board meeting agenda for consideration by the entire board.

Series Name: 1000 - Public Relations and Communications

Topic: 1100 - Principles and Objectives for Community Relations

Policy: 1102 District Communications

The Superintendent and Board of Education recognize that strong relationships with staff and community are essential for a strong school district. Comprehensive internal and external communication is critical toward building that relationship. Regular and ongoing communication will be maintained, reflecting the school district's commitment to transparency and two-way dialogue. The Board desires that patrons be well informed about district policies and programs and messages will be shared in multiple ways to help keep everyone informed. At times the Board may wish to make a statement through its president but normally the Superintendent, through the District's communications office, will be responsible for communication- to explain school needs, goals, programs and achievements.

Series Name: 1000 - Public Relations and Communications

Topic: 1400 - Public Participation in the School District

Policy: 1401 Public Participation in the Schools

Community residents will be encouraged to share any special training, experience or philosophies with district students and staff. They may be invited to act as advisors -- either individually or in groups -- in:

1. Clarifying ideas and attitudes held by residents regarding their schools.
2. Developing board policies for the management of the school system.
3. Establishing ways to implement board policies.
4. Determining purposes of study and services provided to students.
5. Evaluating how well the purposes are being achieved.
6. Assisting the professional staff in situations where the aid is deemed especially valuable.
7. Solving specific problem(s) facing the Board.
8. The operation of school related agencies.

The Board of Education, administration and staff of the Papillion La Vista Community Schools want to do everything possible to enable the educational experience for each student to be a worthwhile and positive experience. In this endeavor, we are committed to working with students, parents and guardians, and the broader community in having the best staff, programs and materials possible.

Procedure 1401

When anyone would have a concern or complaint about any school matter, he/she should discuss this concern with the school staff person who is directly involved. If a satisfactory resolution cannot be reached, he/she would then ask that person whom the next supervisory level would be, and then proceed to discuss the matter with that person. Commonly that would be a supervisor or building principal. If the concern is not resolved please refer to Board Policy #2102.

Series Name: 1000 - Public Relations and Communications

Topic: 1400 - Public Participation in the School District

Policy: 1405 Solicitation in the Schools

Agents, solicitors or salesmen may not visit teachers during school hours except with permission of the building principal or Superintendent. Individuals who wish to confer with a teacher or pupil about non-school matters should do so when school is not in session.

The Board believes that student fund-raising should be kept to a minimum and must adhere to policies 1409 and 1410. Solicitation will be allowed only for school related activities.

Subject: District Property Transfer Request– Belterra Phase 3

Meeting Date: February 10, 2025

Prior Meeting Discussion Date: January 27, 2025

Department: Business Services

Action Desired: Approval X Discussion _____ Information Only _____

Background:

The district has received a district property transfer request from the agreement with Springfield Platteview Community Schools. The agreement allows a transfer of specified land into the Papillion La Vista Community School District if certain conditions are met. One of the conditions specified in the agreement is approval by the respective Boards of Education.

The property requested to be transferred is an estimated 51.238 acres and is a part of the current Belterra subdivision. It is generally located on the east side of 120th St. and south of Schram Road area. The location is included in the current specifications of the property transfer agreement. A map of the location is provided. The development is scheduled to attend Ashbury Elementary School and was anticipated in the district growth plan.

Recommendation:

Motion to approve the ADJUSTMENT OF SCHOOL DISTRICT BOUNDARIES INTERLOCAL AGREEMENT between Springfield Platteview Community Schools and Papillion La Vista Community Schools of an estimated 51.238 acres in the Belterra subdivision as presented and on file with official district records and the processing of school Reorganization Plan(s) to Transfer and Attach Property by a Change of Boundaries in accordance with the terms and conditions of the Agreement under and pursuant to the Learning Community Reorganization Act (Sections 79-4,117 to 79-4,129) and other Nebraska laws and that the Board President, Vice President or Superintendent be authorized to execute and deliver the Agreement and implement and administer the transactions thereunder for and on behalf of this school district.

Responsible Person: Brett Richards

Superintendent's Approval _____
Andrew J. Rikli
Signature

RETURN TO AGENDA

REORGANIZATION PLAN AND ORDER

REORGANIZATION PLAN
TO TRANSFER AND ATTACH PROPERTY BY A CHANGE OF BOUNDARIES
UNDER AND PURSUANT TO THE LEARNING COMMUNITY REORGANIZATION ACT
(Sections 79-4,117 to 79-4,129)

TO: The Coordinating Council for the Learning Community of Douglas and Sarpy Counties, the State Committee for the Reorganization of School Districts, the County Clerks of Douglas and Sarpy Counties Nebraska, and All Others Who Are, or May Be, Concerned.

A. This Reorganization Plan (the "Plan") is being initiated under and pursuant to the Learning Community Reorganization Act found at Neb. Rev. Stat §§ 79-4,117 to 79-4,129 (the "Act") and other Nebraska laws, by Sarpy County School District 77-0046, a/k/a Springfield Platteview Community Schools, hereinafter referred to as "SP," an accredited Class III School District, under the laws and statutes of the State of Nebraska, and Sarpy County School District 77-0027, a/k/a Pillion La Vista Community Schools, hereinafter referred to as "PL", also an accredited Class III School District, under the laws and statutes of the State of Nebraska, (collectively, both school districts are herein sometimes referred to as the "School Districts"). The School Districts are members of and present the Plan to the Learning Community Coordinating Council (the "Council") for the Learning Community of Douglas and Sarpy Counties (the "LC") for approval and submission on to the State Committee for the Reorganization of School Districts (the "State Committee") for review and action under the Act. Both School Districts have conditionally approved the Plan and hereby request approval from the Council and State Committee according to the Act for submission back to the School Districts for their final approval and implementation by the Sarpy and/or Douglas County Clerk(s). This Plan involves the transfer and attachment to an established district of part of the territory of one or more districts under Neb. Rev. Stat § 79-4,120 and a change in boundaries of the School Districts solely within the LC and no territory is being transferred out of the LC. SP and PL are not part of an affiliation of school districts or an affiliated school system as provided by Nebraska law.

B. The undersigned School Districts by this Plan, petition, agree, state and represent that it is considered to be in the best interests of SP, PL and the LC, that the boundaries of each of the School Districts be changed in accordance with this Plan and Agreement, and in furtherance thereof, do hereby request the Council, State Committee and County Officials to whom this Plan and Agreement is directed or their successors in interest, to approve same enter an order changing the boundaries of SP and PL, pursuant to Neb. Rev. Stat § 79-4,128, and other Nebraska laws, so as to transfer the following-described territory from SP to PL, such territory (herein sometimes referred to as the "Property") being legally described as follows, to-wit:

A TRACT OF LAND LOCATED IN PART TAX LOT 4, A TAX LOT LOCATED IN PART OF THE NW1/4 OF THE NW1/4, PART OF THE NE1/4 OF THE NW1/4, PART OF THE SE1/4 OF THE NW1/4 AND PART OF THE SW1/4 OF THE NW1/4, LOCATED IN SECTION 05, TOWNSHIP 13 NORTH, RANGE 12 EAST OF THE 6TH P.M., SARPY COUNTY, NEBRASKA. MORE PARTICULARLY DESCRIBED AS FOLLOWS:

BEGINNING AT THE SOUTHWEST CORNER OF SAID NW1/4 OF SECTION 05, SAID POINT ALSO BEING THE SOUTHWEST CORNER OF SAID TAX LOT 4; THENCE N03°07'16"W (ASSUMED BEARING) ALONG THE WEST LINE OF SAID NW1/4 OF SECTION 05, SAID LINE ALSO BEING THE WEST LINE OF SAID TAX LOT 4, A DISTANCE OF 2634.61 FEET TO A POINT ON THE ON THE SOUTHERLY RIGHT-OF-WAY LINE OF SCHRAM ROAD, SAID POINT ALSO BEING 50 FEET SOUTH OF THE NORTH LINE OF SAID NW1/4 OF SECTION 05; THENCE N87°15'58"E ALONG SAID SOUTHERLY RIGHT-OF-WAY LINE OF SCHRAM ROAD, SAID LINE ALSO BEING A LINE 50 FEET SOUTH OF AND PARALLEL WITH THE NORTH LINE OF SAID NW1/4 OF SECTION 05, A DISTANCE OF 350.42 FEET; THENCE SOUTHERLY ON THE FOLLOWING TWELVE (12) DESCRIBED COURSES; (1) THENCE S05°20'17"W, A DISTANCE OF 74.18 FEET; (2) THENCE S44°08'41"W, A DISTANCE OF 105.88 FEET; (3) THENCE SOUTHEASTERLY ON A CURVE TO THE RIGHT WITH A RADIUS OF 50.00 FEET, A DISTANCE OF 43.69 FEET, SAID CURVE HAVING A LONG CHORD WHICH BEARS S20°49'30"E, A DISTANCE OF 42.31 FEET; (4) THENCE S89°29'52"E, A DISTANCE OF 130.40 FEET; (5) THENCE S04°57'16"W, A DISTANCE OF 80.24 FEET; (6) THENCE S04°14'44"W, A DISTANCE OF 241.03 FEET; (7) THENCE S01°16'32"E, A DISTANCE OF 158.74 FEET; (8) THENCE S11°28'35"E, A DISTANCE OF 74.93 FEET; (9) THENCE S17°09'55"E, A DISTANCE OF 93.80 FEET; (10) THENCE S17°03'33"E, A DISTANCE OF 44.73 FEET; (11) THENCE S03°03'54"E, A DISTANCE OF 366.41 FEET; (12) THENCE S16°33'08"E, A DISTANCE OF 78.51 FEET TO THE NORTHERLY RIGHT-OF-WAY LINE OF SUNBURST DRIVE; THENCE S16°00'17"E, A DISTANCE OF 50.00 FEET TO A POINT ON THE SOUTHERLY RIGHT-OF-WAY LINE OF SUNBURST DRIVE; THENCE ALONG THE SOUTHERLY RIGHT-OF-WAY LINE OF SUNBURST DRIVE ON THE FOLLOWING THIRTEEN (13) DESCRIBED COURSES; (1) THENCE N73°59'43"E, A DISTANCE OF 138.98 FEET; (2) THENCE S61°00'17"E, A DISTANCE OF 17.68 FEET; (3) THENCE N73°59'43"E, A DISTANCE OF 50.00 FEET; (4) THENCE N28°59'43"E, A DISTANCE OF 17.68 FEET; (5) THENCE N73°59'43"E, A DISTANCE OF 238.71 FEET; (6) THENCE S61°00'17"E, A DISTANCE OF 17.68 FEET; (7) THENCE N73°59'43"E, A DISTANCE OF 50.00 FEET; (8) THENCE N28°59'43"E, A DISTANCE OF 17.68 FEET; (9) THENCE N73°59'43"E, A DISTANCE OF 119.98 FEET; (10) THENCE S18°22'41"E, A DISTANCE OF 88.95 FEET; (11) THENCE S30°57'13"E, A DISTANCE OF 74.25 FEET; (12) THENCE S46°21'23"E, A DISTANCE OF 160.64 FEET; (13) THENCE S39°52'16"W, A DISTANCE OF 132.33 FEET; THENCE SOUTHEASTERY ON A CURVE TO THE LEFT WITH A RADIUS OF 450.00 FEET, A DISTANCE OF 20.01 FEET, SAID CURVE HAVING A LONG CHORD WHICH BEARS S51°24'09"E, A DISTANCE OF 20.00 FEET; THENCE N39°52'16"E, A DISTANCE OF 132.05 FEET; THENCE S61°35'27"E, A DISTANCE OF 79.04 FEET; THENCE S77°12'43"E, A DISTANCE OF 80.24 FEET; THENCE N87°02'40"E, A DISTANCE OF 86.22 FEET; THENCE S12°24'16"W, A DISTANCE OF 734.58 FEET; THENCE SOUTHWESTERLY ON A CURVE TO THE LEFT WITH A RADIUS OF 525.00 FEET, A

DISTANCE OF 106.52 FEET, SAID CURVE HAVING A LONG CHORD WHICH BEARS S02°49'22"W, A DISTANCE OF 106.34 FEET; THENCE S02°59'23"E, A DISTANCE OF 249.45 FEET TO A POINT ON THE SOUTH LINE OF SAID TAX LOT 4, SAID POINT ALSO BEING ON THE SOUTH LINE OF SAID NW1/4 OF SECTION 05; THENCE S87°00'37"W ALONG SAID SOUTH LINE OF TAX LOT 4, SAID LINE ALSO BEING SAID SOUTH LINE OF NW1/4 OF SECTION 05, A DISTANCE OF 1267.66 FEET TO THE POINT OF BEGINNING.

SAID TRACT OF LAND CONTAINS 2,231,925 SQUARE FEET OR 51.238 ACRES, MORE OR LESS.

C. The terms of this Plan and Agreement and on which the transfer and attachment by a change of boundaries, as described above, is to be made between SP and PL shall be as follows:

1. A DESCRIPTION OF THE PROPOSED BOUNDARIES OF THE REORGANIZED DISTRICTS AND A DESIGNATION OF THE CLASS FOR EACH DISTRICT

A description of the Property to be transferred from SP to PL is contained above. Both School Districts are Class III school districts. For a description of the boundaries of the reorganized districts see maps referred to in paragraph 5. and attached as Exhibit "1" to this Plan.

2. SUMMARY OF REASONS FOR PROPOSED CHANGE, EXPLANATION OF STATUTORY COMPLIANCE AND STATUTORY ASSURANCE

The reasons for the proposed transfer and attachment of Property by a change of boundaries pursuant to Neb. Rev. Stat § 79-4,120 as provided herein involve consideration being given to: (1) the educational needs of the learning community, (2) economies in administration costs, (3) the future use of existing satisfactory school buildings, sites, and play fields, (4) the convenience and welfare of pupils, (5) transportation requirements, (6) the equalization of the educational opportunity of pupils, (7) the amount of outstanding indebtedness of each district and proposed disposition thereof, (8) the equitable adjustment of all property, debts, and liabilities among the districts involved, (9) any additional statutory requirements for learning community organization, and (10) any other matters which, in the School Districts judgment, are of importance. This Plan complies with statutory requirements in that no property is leaving the LC and for the reasons stated above. This Plan does not increase the geographic size of any school district that has more than twenty-five thousand students.

3. SUMMARY OF TERMS OF REORGANIZATION

The terms of this Plan involve a transfer and attachment of Property by a change of boundaries pursuant to Neb. Rev. Stat § 79-4,120 as described herein. As this Plan only involves such transfer and attachment according to the Act and there is no new district being created, the school boards, school board wards or districts, if any, and classifications of the School Districts involved are unchanged and shall remain the same and the State Committee will not need to determine initial school board districts or wards, or appoint an initial school board.

4. STATEMENT OF FINDINGS ON LOCATION AND UTILIZATION OF SCHOOLS AND TRANSPORTATION

The terms of this Plan involve a transfer and attachment of Property by a change of boundaries pursuant to Neb. Rev. Stat § 79-4,120 as described herein. As this Plan only involves such transfer and attachment according to the Act there is no change with respect to the location of schools, the utilization of existing buildings, the construction of new buildings, or the transportation requirements of the School Districts involved.

5. MAPS SHOWING BOUNDARIES

Maps showing the boundaries of established school districts and the boundaries proposed under this Plan are attached hereto and incorporated herein by this reference as Exhibit "1."

6. OTHER MATTERS

The effective date of the change of boundaries and the transfer of the Property from SP to PL shall be upon final approvals and entry of an order by the appropriate County Officials whose order is necessary to effect the change in boundaries and Property transfer set forth herein, or according to law, whichever occurs later in time. All assets, including budget authority and unbonded liabilities of each School District shall remain the same on such transfer and attachment hereunder and shall not be transferred to PL. The transferred land shall continue to be liable for any bonded indebtedness voted or incurred by SP prior to the boundary change order effective date and such transferred land shall not be liable for any bond indebtedness voted or incurred by PL prior to the effective date of the boundary change order. The transferred land shall be responsible for future bonded indebtedness, if any, voted or incurred by PL after the effective date of the boundary change order. All uncollected real estate taxes due and payable on such transferred land prior to the effective date of the boundary change order shall remain the property of SP. All real estate taxes levied and assessed on such transferred land after the effective date of the boundary change order shall be the property of PL.

Upon completing the transfer the Sarpy and/or Douglas County Clerk(s) shall file the order, certificates or other appropriate notice documents with the Sarpy and/or Douglas County Assessor, Treasurer, the State Committee and all other appropriate county or state officials so that taxing records, voting records, and the like, may be changed to reflect such action, and so that such records and any appropriate maps can be changed accordingly.

The undersigned School Districts hereby certify and agree that the Property described in this Plan is within the parameters and meets all conditions of their ADJUSTMENT OF SCHOOL DISTRICT BOUNDARIES INTERLOCAL AGREEMENT and hereby respectfully initiate and present this Plan, and agree and request that the changes in boundaries as set forth herein.

BOARD OF EDUCATION AND SCHOOL
BOARD OF SARPY COUNTY SCHOOL
DISTRICT 77-0046, a/k/a SPRINGFIELD
PLATTEVIEW COMMUNITY SCHOOLS

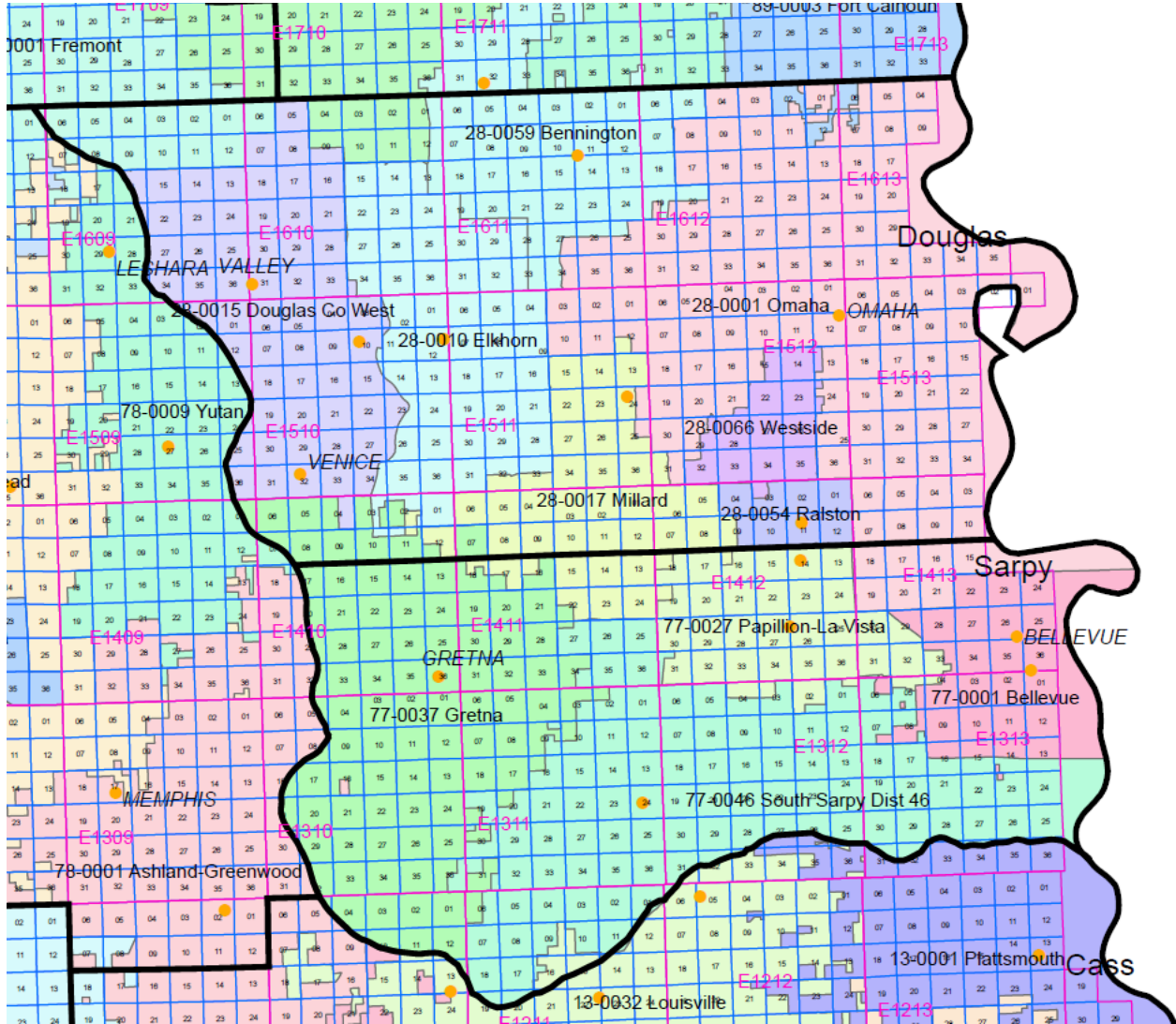
By: _____
Authorized Official

BOARD OF EDUCATION AND SCHOOL
BOARD OF SARPY COUNTY SCHOOL
DISTRICT 77-0027, a/k/a PAPILLION LA VISTA
PUBLIC SCHOOLS

By: _____
Authorized Official

EXHIBIT "1"
(MAPS)

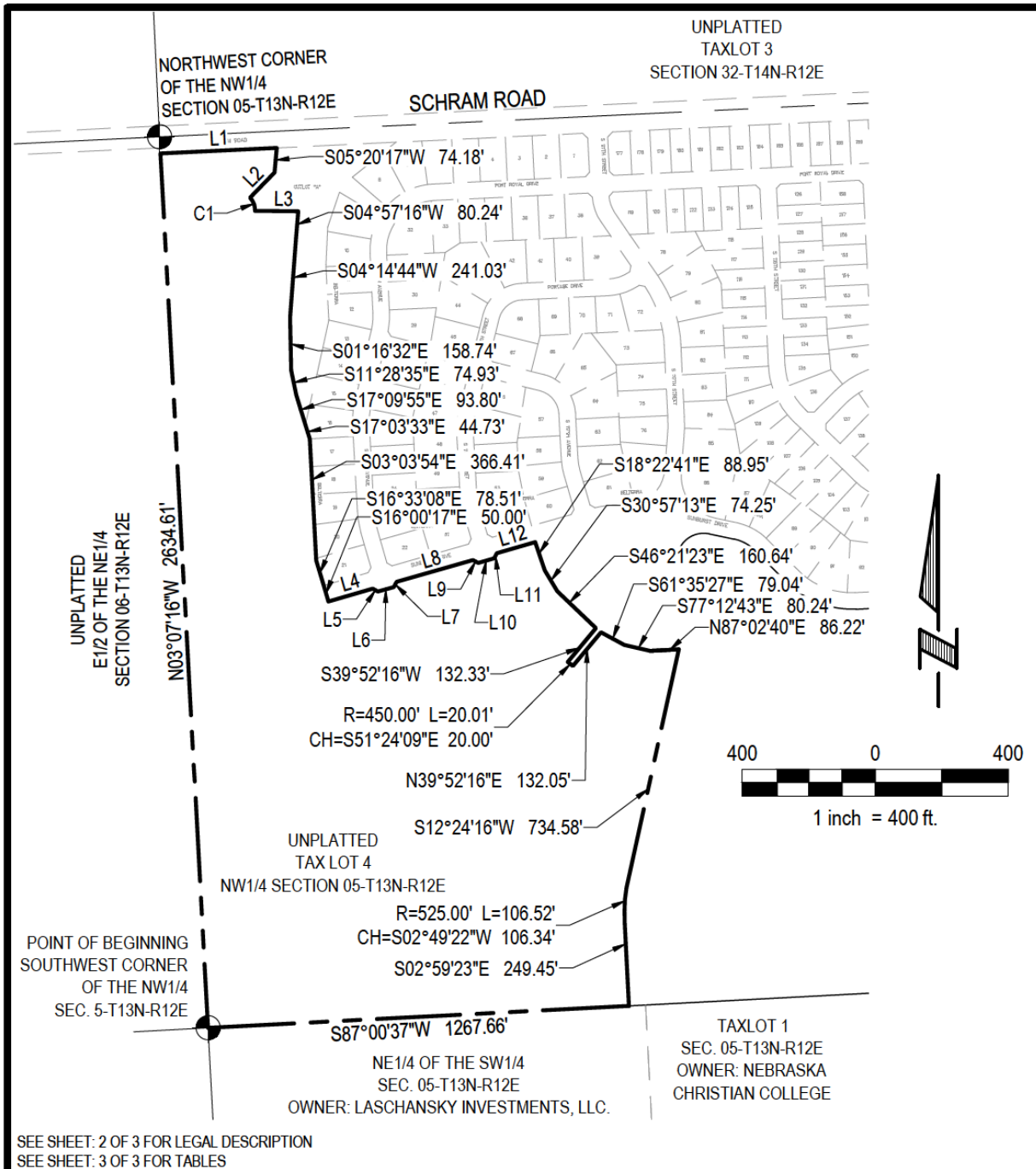
ESTABLISHED DISTRICTS



The intention is to include in this Map the entire boundaries and geographic area and territory of the existing SP and the existing PL which is legally within such school districts. It is further the intention to exclude from this Map any boundaries and geographic area and territory which is not legally within the existing SP and the existing PL. Further, in the event of conflicting descriptions between this Map and official records and documents on file with the County Clerks of Sarpy and/or Douglas Counties, Nebraska, and such other appropriate officials who are required by law to maintain school district boundary lines and description records, such official records and documents shall be controlling as to what are the proper and legal descriptions and boundaries of the existing SP and PL.

EXHIBIT "1"
(MAPS)

BOUNDARIES PROPOSED UNDER THIS PLAN



 E & A CONSULTING GROUP, INC. Engineering Answers	E & A CONSULTING GROUP, INC. Engineering • Planning • Environmental & Field Services 10909 Mill Valley Road, Suite 100 • Omaha, NE 68154 Phone: 402.895.4700 • Fax: 402.895.3599		SCHOOL TRANSFER LEGAL PART OF THE NW1/4 OF SECTION 05, TOWNSHIP 13 NORTH, RANGE 12 EAST SARPY COUNTY, NEBRASKA
	Job No.: P2017.550.001 Drawn by: CJV	Date: 08-23-2022 Scale: 1" = 400' Sht: 1 of 3	

EXHIBIT "1"
(MAPS)

BOUNDARIES PROPOSED UNDER THIS PLAN

LEGAL DESCRIPTION

A TRACT OF LAND LOCATED IN PART TAX LOT 4, A TAX LOT LOCATED IN PART OF THE NW1/4 OF THE NW1/4, PART OF THE NE1/4 OF THE NW1/4, PART OF THE SE1/4 OF THE NW1/4 AND PART OF THE SW1/4 OF THE NW1/4, LOCATED IN SECTION 05, TOWNSHIP 13 NORTH, RANGE 12 EAST OF THE 6TH P.M., SARPY COUNTY, NEBRASKA. MORE PARTICULARLY DESCRIBED AS FOLLOWS:

BEGINNING AT THE SOUTHWEST CORNER OF SAID NW1/4 OF SECTION 05, SAID POINT ALSO BEING THE SOUTHWEST CORNER OF SAID TAX LOT 4; THENCE N03°07'16"W (ASSUMED BEARING) ALONG THE WEST LINE OF SAID NW1/4 OF SECTION 05, SAID LINE ALSO BEING THE WEST LINE OF SAID TAX LOT 4, A DISTANCE OF 2634.61 FEET TO A POINT ON THE ON THE SOUTHERLY RIGHT-OF-WAY LINE OF SCHRAM ROAD, SAID POINT ALSO BEING 50 FEET SOUTH OF THE NORTH LINE OF SAID NW1/4 OF SECTION 05; THENCE N87°15'58"E ALONG SAID SOUTHERLY RIGHT-OF-WAY LINE OF SCHRAM ROAD, SAID LINE ALSO BEING A LINE 50 FEET SOUTH OF AND PARALLEL WITH THE NORTH LINE OF SAID NW1/4 OF SECTION 05, A DISTANCE OF 350.42 FEET; THENCE SOUTHERLY ON THE FOLLOWING TWELVE (12) DESCRIBED COURSES; (1) THENCE S05°20'17"W, A DISTANCE OF 74.18 FEET; (2) THENCE S44°08'41"W, A DISTANCE OF 105.88 FEET; (3) THENCE SOUTHEASTERLY ON A CURVE TO THE RIGHT WITH A RADIUS OF 50.00 FEET, A DISTANCE OF 43.69 FEET, SAID CURVE HAVING A LONG CHORD WHICH BEARS S20°49'30"E, A DISTANCE OF 42.31 FEET; (4) THENCE S89°29'52"E, A DISTANCE OF 130.40 FEET; (5) THENCE S04°57'16"W, A DISTANCE OF 80.24 FEET; (6) THENCE S04°14'44"W, A DISTANCE OF 241.03 FEET; (7) THENCE S01°16'32"E, A DISTANCE OF 158.74 FEET; (8) THENCE S11°28'35"E, A DISTANCE OF 74.93 FEET; (9) THENCE S17°09'55"E, A DISTANCE OF 93.80 FEET; (10) THENCE S17°03'33"E, A DISTANCE OF 44.73 FEET; (11) THENCE S03°03'54"E, A DISTANCE OF 366.41 FEET; (12) THENCE S16°33'08"E, A DISTANCE OF 78.51 FEET TO THE NORTHERLY RIGHT-OF-WAY LINE OF SUNBURST DRIVE; THENCE S16°00'17"E, A DISTANCE OF 50.00 FEET TO A POINT ON THE SOUTHERLY RIGHT-OF-WAY LINE OF SUNBURST DRIVE; THENCE ALONG THE SOUTHERLY RIGHT-OF-WAY LINE OF SUNBURST DRIVE ON THE FOLLOWING THIRTEEN (13) DESCRIBED COURSES; (1) THENCE N73°59'43"E, A DISTANCE OF 138.98 FEET; (2) THENCE S61°00'17"E, A DISTANCE OF 17.68 FEET; (3) THENCE N73°59'43"E, A DISTANCE OF 50.00 FEET; (4) THENCE N28°59'43"E, A DISTANCE OF 17.68 FEET; (5) THENCE N73°59'43"E, A DISTANCE OF 238.71 FEET; (6) THENCE S61°00'17"E, A DISTANCE OF 17.68 FEET; (7) THENCE N73°59'43"E, A DISTANCE OF 50.00 FEET; (8) THENCE N28°59'43"E, A DISTANCE OF 17.68 FEET; (9) THENCE N73°59'43"E, A DISTANCE OF 119.98 FEET; (10) THENCE S18°22'41"E, A DISTANCE OF 88.95 FEET; (11) THENCE S30°57'13"E, A DISTANCE OF 74.25 FEET; (12) THENCE S46°21'23"E, A DISTANCE OF 160.64 FEET; (13) THENCE S39°52'16"W, A DISTANCE OF 132.33 FEET; THENCE SOUTHEASTERLY ON A CURVE TO THE LEFT WITH A RADIUS OF 450.00 FEET, A DISTANCE OF 20.01 FEET, SAID CURVE HAVING A LONG CHORD WHICH BEARS S51°24'09"E, A DISTANCE OF 20.00 FEET; THENCE N39°52'16"E, A DISTANCE OF 132.05 FEET; THENCE S61°35'27"E, A DISTANCE OF 79.04 FEET; THENCE S77°12'43"E, A DISTANCE OF 80.24 FEET; THENCE N87°02'40"E, A DISTANCE OF 86.22 FEET; THENCE S12°24'16"W, A DISTANCE OF 734.58 FEET; THENCE SOUTHWESTERLY ON A CURVE TO THE LEFT WITH A RADIUS OF 525.00 FEET, A DISTANCE OF 106.52 FEET, SAID CURVE HAVING A LONG CHORD WHICH BEARS S02°49'22"W, A DISTANCE OF 106.34 FEET; THENCE S02°59'23"E, A DISTANCE OF 249.45 FEET TO A POINT ON THE SOUTH LINE OF SAID TAX LOT 4, SAID POINT ALSO BEING ON THE SOUTH LINE OF SAID NW1/4 OF SECTION 05; THENCE S87°00'37"W ALONG SAID SOUTH LINE OF TAX LOT 4, SAID LINE ALSO BEING SAID SOUTH LINE OF NW1/4 OF SECTION 05, A DISTANCE OF 1267.66 FEET TO THE POINT OF BEGINNING.

SAID TRACT OF LAND CONTAINS 2,231,925 SQUARE FEET OR 51.238 ACRES, MORE OR LESS.

SEE SHEET: 1 OF 3 FOR DRAWING
SEE SHEET: 3 OF 3 FOR TABLES

 E & A CONSULTING GROUP, INC. <i>Engineering Answers</i>	E & A CONSULTING GROUP, INC. Engineering • Planning • Environmental & Field Services 10909 Mill Valley Road, Suite 100 • Omaha, NE 68154 Phone: 402.895.4700 • Fax: 402.895.3599		SCHOOL TRANSFER LEGAL PART OF THE NW1/4 OF SECTION 05, TOWNSHIP 13 NORTH, RANGE 12 EAST SARPY COUNTY, NEBRASKA
	Job No.: P2017.550.001	Date: 08-23-2022	
Drawn by: CJV	Scale: 1" = 400'	Sht: 2 of 3	

EXHIBIT "1"
(MAPS)

BOUNDARIES PROPOSED UNDER THIS PLAN

LINE TABLE		
LINE #	DIRECTION	LENGTH
L1	N87° 15' 58"E	350.42'
L2	S44° 08' 41"W	105.88'
L3	S89° 29' 52"E	130.40'
L4	N73° 59' 43"E	138.98'
L5	S61° 00' 17"E	17.68'
L6	N73° 59' 43"E	50.00'
L7	N28° 59' 43"E	17.68'
L8	N73° 59' 43"E	238.71'
L9	S61° 00' 17"E	17.68'
L10	N73° 59' 43"E	50.00'
L11	N28° 59' 43"E	17.68'
L12	N73° 59' 43"E	119.98'

CURVE TABLE				
CURVE #	RADIUS	LENGTH	LONG CHORD	CHORD LENGTH
C1	50.00'	43.69'	S20° 49' 30"E	42.31'

SEE SHEET: 1 OF 3 FOR DRAWING
SEE SHEET: 2 OF 3 FOR LEGAL DESCRIPTION

 E & A CONSULTING GROUP, INC. <i>Engineering Answers</i>	E & A CONSULTING GROUP, INC. Engineering • Planning • Environmental & Field Services 10909 Mill Valley Road, Suite 100 • Omaha, NE 68154 Phone: 402.895.4700 • Fax: 402.895.3599		SCHOOL TRANSFER LEGAL PART OF THE NW1/4 OF SECTION 05, TOWNSHIP 13 NORTH, RANGE 12 EAST SARPY COUNTY, NEBRASKA
	Job No.: P2017.550.001	Date: 08-23-2022	
Drawn by: CJV	Scale: 1" = 400'	Sht: 3 of 3	

EXHIBIT "1"
(MAPS)

BOUNDARIES PROPOSED UNDER THIS PLAN

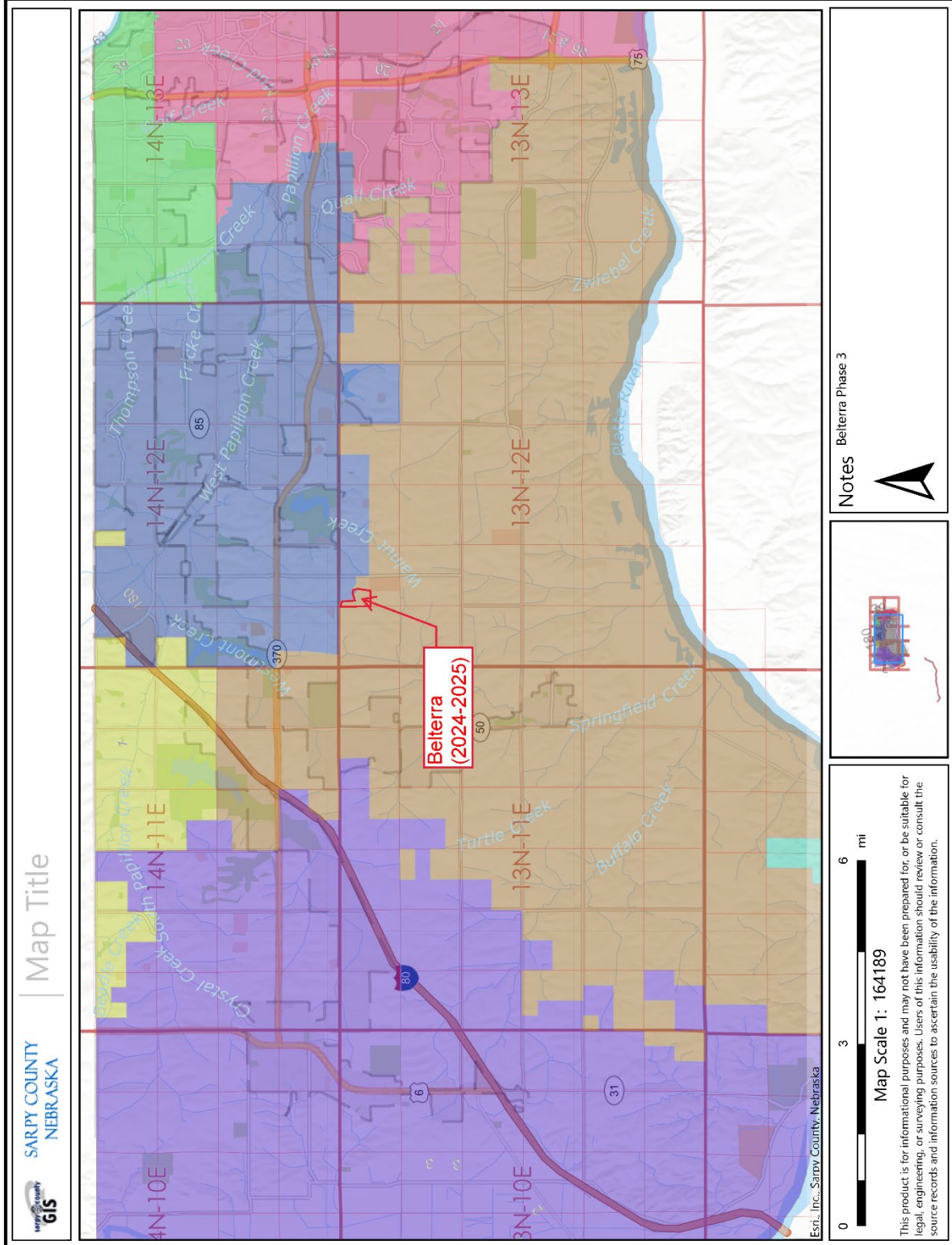
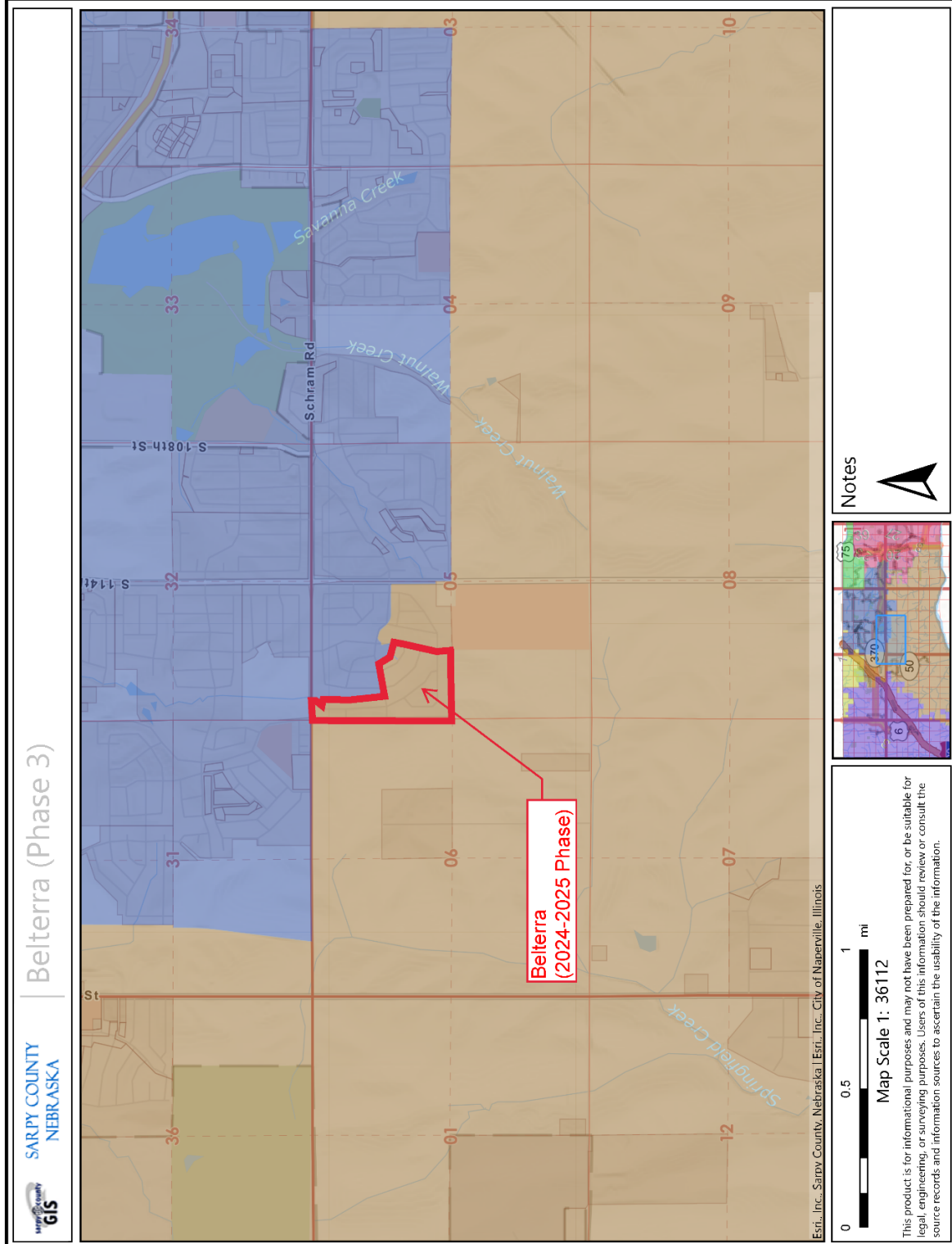


EXHIBIT "1"
(MAPS)

BOUNDARIES PROPOSED UNDER THIS PLAN



b

Subject: District Property Transfer Request– Shadow Creek Phase 1

Meeting Date: February 10, 2025

Prior Meeting Discussion Date: January 27, 2025

Department: Business Services

Action Desired: Approval X Discussion _____ Information Only _____

Background:

The district has received a district property transfer request from the agreement with Springfield Platteview Community Schools. The agreement allows a transfer of specified land into the Papillion La Vista Community School District if certain conditions are met. One of the conditions specified in the agreement is approval by the respective Boards of Education.

The property requested to be transferred is in Shadow Creek Phase 1 and consists of approximately 46.431 acres and is generally located west of 84th St. and north of Capehart Road and south of Schram Road. The location is included in the current specifications of the property transfer agreement. A map of the location is provided. The new development is scheduled to attend Patriot Elementary School and was anticipated in the district growth plan.

Recommendation:

Motion to approve the ADJUSTMENT OF SCHOOL DISTRICT BOUNDARIES INTERLOCAL AGREEMENT between Springfield Platteview Community Schools and Papillion La Vista Community Schools of an estimated 46.431 acres in the new Shadow Creek subdivision as presented and on file with official district records and the processing of school district Reorganization Plan(s) to Transfer and Attach Property by a Change of Boundaries in accordance with the terms and conditions of the Agreement under and pursuant to the Learning Community Reorganization Act (Sections 79-4,117 to 79-4,129) and other Nebraska laws and that the Board President, Vice President or Superintendent be authorized to execute and deliver the Agreement and implement and administer the transactions thereunder for and on behalf of this school district.

Responsible Person: Brett Richards

Superintendent's Approval _____
Andrew J. Rikli
Signature

REORGANIZATION PLAN AND ORDER

REORGANIZATION PLAN TO TRANSFER AND ATTACH PROPERTY BY A CHANGE OF BOUNDARIES UNDER AND PURSUANT TO THE LEARNING COMMUNITY REORGANIZATION ACT (Sections 79-4,117 to 79-4,129)

TO: The Coordinating Council for the Learning Community of Douglas and Sarpy Counties, the State Committee for the Reorganization of School Districts, the County Clerks of Douglas and Sarpy Counties Nebraska, and All Others Who Are, or May Be, Concerned.

A. This Reorganization Plan (the "Plan") is being initiated under and pursuant to the Learning Community Reorganization Act found at Neb. Rev. Stat §§ 79-4,117 to 79-4,129 (the "Act") and other Nebraska laws, by Sarpy County School District 77-0046, a/k/a Springfield Platteview Community Schools, hereinafter referred to as "SP," an accredited Class III School District, under the laws and statutes of the State of Nebraska, and Sarpy County School District 77-0027, a/k/a Pillion La Vista Community Schools, hereinafter referred to as "PL", also an accredited Class III School District, under the laws and statutes of the State of Nebraska, (collectively, both school districts are herein sometimes referred to as the "School Districts"). The School Districts are members of and present the Plan to the Learning Community Coordinating Council (the "Council") for the Learning Community of Douglas and Sarpy Counties (the "LC") for approval and submission on to the State Committee for the Reorganization of School Districts (the "State Committee") for review and action under the Act. Both School Districts have conditionally approved the Plan and hereby request approval from the Council and State Committee according to the Act for submission back to the School Districts for their final approval and implementation by the Sarpy and/or Douglas County Clerk(s). This Plan involves the transfer and attachment to an established district of part of the territory of one or more districts under Neb. Rev. Stat § 79-4,120 and a change in boundaries of the School Districts solely within the LC and no territory is being transferred out of the LC. SP and PL are not part of an affiliation of school districts or an affiliated school system as provided by Nebraska law.

B. The undersigned School Districts by this Plan, petition, agree, state and represent that it is considered to be in the best interests of SP, PL and the LC, that the boundaries of each of the School Districts be changed in accordance with this Plan and Agreement, and in furtherance thereof, do hereby request the Council, State Committee and County Officials to whom this Plan and Agreement is directed or their successors in interest, to approve same enter an order changing the boundaries of SP and PL, pursuant to Neb. Rev. Stat § 79-4,128, and other Nebraska laws, so as to transfer the following-described territory from SP to PL, such territory (herein sometimes referred to as the "Property") being legally described as follows, to-wit:

A TRACT OF LAND BEING PART OF TAX LOT 9, AND ALSO ALL OF TAX LOT 1B, AND ALSO ALL OF TAX LOT 2, ALL BEING TAX LOTS LOCATED IN THE SE1/4 OF THE NE1/4, AND ALSO THE SW1/4 OF THE NE1/4, AND ALSO THE NE1/4 OF THE SE1/4, AND ALSO THE SW1/4 OF THE SE1/4, AND ALSO THE NW1/4 OF THE SE1/4, ALL LOCATED IN SECTION 3, TOWNSHIP 13 NORTH, RANGE 12 EAST OF THE 6TH P.M., SARPY

COUNTY, NEBRASKA, MORE PARTICULARLY DESCRIBED AS FOLLOWS:

BEGINNING AT THE CENTER OF SAID SECTION 3, SAID POINT ALSO BEING THE SOUTHWEST CORNER OF SAID TAX LOT 9, AND ALSO THE NORTHWEST CORNER OF SAID TAX LOT 2, AND ALSO BEING ON THE EASTERLY RIGHT-OF-WAY LINE OF SOUTH 90TH STREET; THENCE N00°21'00"W (ASSUMED BEARING) ALONG THE WEST LINE OF SAID NE1/4 OF SECTION 3, SAID LINE ALSO BEING THE WEST LINE OF SAID TAX LOT 9, AND ALSO SAID EASTERLY RIGHT-OF-WAY LINE OF SOUTH 90TH STREET, A DISTANCE OF 39.01 FEET; THENCE S89°54'38"E, A DISTANCE OF 2141.21 FEET TO A POINT ON THE SOUTHERLY LINE OF SAID TAX LOT 9, SAID POINT ALSO BEING ON THE NORTHERLY RIGHT-OF-WAY LINE OF THE ABANDONED ROCK ISLAND RAILROAD, SAID POINT ALSO BEING ON THE NORTHERLY LINE OF SAID TAX LOT C; THENCE SOUTHWESTERLY ALONG SAID SOUTHERLY LINE OF TAX LOT 9, SAID LINE ALSO BEING SAID NORTHERLY RIGHT-OF-WAY LINE OF THE ABANDONED ROCK ISLAND RAILROAD, SAID LINE ALSO BEING SAID NORTHERLY LINE OF TAX LOT C, ON A CURVE TO THE LEFT WITH A RADIUS OF 2914.70 FEET, A DISTANCE OF 120.64 FEET, SAID CURVE HAVING A LONG CHORD WHICH BEARS S59°51'07"W, A DISTANCE OF 120.63 FEET TO A POINT ON THE NORTH LINE OF TAX LOT B, A TAX LOT LOCATED IN SAID SECTION 3, SAID POINT ALSO BEING THE SOUTHWEST CORNER OF SAID TAX LOT C, SAID POINT ALSO BEING ON THE NORTH LINE OF SAID SE1/4 OF SECTION 3; THENCE N89°29'48"W ALONG SAID NORTH LINE OF TAX LOT B, SAID LINE ALSO BEING SAID NORTH LINE OF THE SE1/4 OF SECTION 3, AND ALSO SAID NORTHERLY RIGHT-OF-WAY LINE OF THE ABANDONED ROCK ISLAND RAILROAD, A DISTANCE OF 46.59 FEET TO THE NORTHWEST CORNER OF SAID TAX LOT B, SAID POINT ALSO BEING THE NORTHEAST CORNER OF SAID TAX LOT 2; THENCE SOUTHWESTERLY ALONG SAID NORTHERLY RIGHT-OF-WAY LINE OF THE ABANDONED ROCK ISLAND RAILROAD, SAID LINE ALSO BEING THE WESTERLY LINE OF SAID TAX LOT B, AND ALSO THE EASTERLY LINE OF SAID TAX LOT 2, AND ALSO THE EASTERLY LINE OF SAID TAX LOT 1B, ON THE FOLLOWING THREE (3) DESCRIBED COURSES: (1) SOUTHWESTERLY ON A CURVE TO THE LEFT WITH A RADIUS OF 2939.70 FEET, A DISTANCE OF 817.84 FEET, SAID CURVE HAVING A LONG CHORD WHICH BEARS S49°52'51"W, A DISTANCE OF 815.21 FEET; (2) THENCE S41°54'07"W, A DISTANCE OF 1759.63 FEET; (3) THENCE SOUTHWESTERLY ON A CURVE TO THE RIGHT WITH A RADIUS OF 2789.79 FEET, A DISTANCE OF 256.00 FEET, SAID CURVE HAVING A LONG CORD WHICH BEARS S44°30'30"W, A DISTANCE OF 255.91 FEET TO A POINT ON THE WEST LINE OF SAID SW1/4 OF SECTION 3, SAID POINT ALSO BEING THE SOUTHWEST CORNER OF SAID TAX LOT 1B; THENCE N00°20'22"W ALONG SAID WEST LINE OF THE SW1/4 OF SECTION 3, SAID LINE ALSO BEING THE WEST LINE OF SAID TAX LOT

1B, AND ALSO THE WEST LINE OF SAID TAX LOT 2, A DISTANCE OF 2042.02 FEET TO THE POINT OF BEGINNING.

SAID TRACT OF LAND CONTAINS AN AREA OF 2,022,540 SQUARE FEET OR 46.431 ACRES, MORE OR LESS.

C. The terms of this Plan and Agreement and on which the transfer and attachment by a change of boundaries, as described above, is to be made between SP and PL shall be as follows:

1. A DESCRIPTION OF THE PROPOSED BOUNDARIES OF THE REORGANIZED DISTRICTS AND A DESIGNATION OF THE CLASS FOR EACH DISTRICT

A description of the Property to be transferred from SP to PL is contained above. Both School Districts are Class III school districts. For a description of the boundaries of the reorganized districts see maps referred to in paragraph 5. and attached as Exhibit "1" to this Plan.

2. SUMMARY OF REASONS FOR PROPOSED CHANGE, EXPLANATION OF STATUTORY COMPLIANCE AND STATUTORY ASSURANCE

The reasons for the proposed transfer and attachment of Property by a change of boundaries pursuant to Neb. Rev. Stat § 79-4,120 as provided herein involve consideration being given to: (1) the educational needs of the learning community, (2) economies in administration costs, (3) the future use of existing satisfactory school buildings, sites, and play fields, (4) the convenience and welfare of pupils, (5) transportation requirements, (6) the equalization of the educational opportunity of pupils, (7) the amount of outstanding indebtedness of each district and proposed disposition thereof, (8) the equitable adjustment of all property, debts, and liabilities among the districts involved, (9) any additional statutory requirements for learning community organization, and (10) any other matters which, in the School Districts judgment, are of importance. This Plan complies with statutory requirements in that no property is leaving the LC and for the reasons stated above. This Plan does not increase the geographic size of any school district that has more than twenty-five thousand students.

3. SUMMARY OF TERMS OF REORGANIZATION

The terms of this Plan involve a transfer and attachment of Property by a change of boundaries pursuant to Neb. Rev. Stat § 79-4,120 as described herein. As this Plan only involves such transfer and attachment according to the Act and there is no new district being created, the school boards, school board wards or districts, if any, and classifications of the School Districts involved are unchanged and shall remain the same and the State Committee will not need to determine initial school board districts or wards, or appoint an initial school board.

4. STATEMENT OF FINDINGS ON LOCATION AND UTILIZATION OF SCHOOLS AND TRANSPORTATION

The terms of this Plan involve a transfer and attachment of Property by a change of boundaries pursuant to Neb. Rev. Stat § 79-4,120 as described herein. As this Plan only involves

such transfer and attachment according to the Act there is no change with respect to the location of schools, the utilization of existing buildings, the construction of new buildings, or the transportation requirements of the School Districts involved.

5. MAPS SHOWING BOUNDARIES

Maps showing the boundaries of established school districts and the boundaries proposed under this Plan are attached hereto and incorporated herein by this reference as Exhibit "1."

6. OTHER MATTERS

The effective date of the change of boundaries and the transfer of the Property from SP to PL shall be upon final approvals and entry of an order by the appropriate County Officials whose order is necessary to effect the change in boundaries and Property transfer set forth herein, or according to law, whichever occurs later in time. All assets, including budget authority and unbonded liabilities of each School District shall remain the same on such transfer and attachment hereunder and shall not be transferred to PL. The transferred land shall continue to be liable for any bonded indebtedness voted or incurred by SP prior to the boundary change order effective date and such transferred land shall not be liable for any bond indebtedness voted or incurred by PL prior to the effective date of the boundary change order. The transferred land shall be responsible for future bonded indebtedness, if any, voted or incurred by PL after the effective date of the boundary change order. All uncollected real estate taxes due and payable on such transferred land prior to the effective date of the boundary change order shall remain the property of SP. All real estate taxes levied and assessed on such transferred land after the effective date of the boundary change order shall be the property of PL.

Upon completing the transfer the Sarpy and/or Douglas County Clerk(s) shall file the order, certificates or other appropriate notice documents with the Sarpy and/or Douglas County Assessor, Treasurer, the State Committee and all other appropriate county or state officials so that taxing records, voting records, and the like, may be changed to reflect such action, and so that such records and any appropriate maps can be changed accordingly.

The undersigned School Districts hereby certify and agree that the Property described in this Plan is within the parameters and meets all conditions of their ADJUSTMENT OF SCHOOL DISTRICT BOUNDARIES INTERLOCAL AGREEMENT and hereby respectfully initiate and present this Plan, and agree and request that the changes in boundaries as set forth herein.

BOARD OF EDUCATION AND SCHOOL
BOARD OF SARPY COUNTY SCHOOL
DISTRICT 77-0046, a/k/a SPRINGFIELD
PLATTEVIEW COMMUNITY SCHOOLS

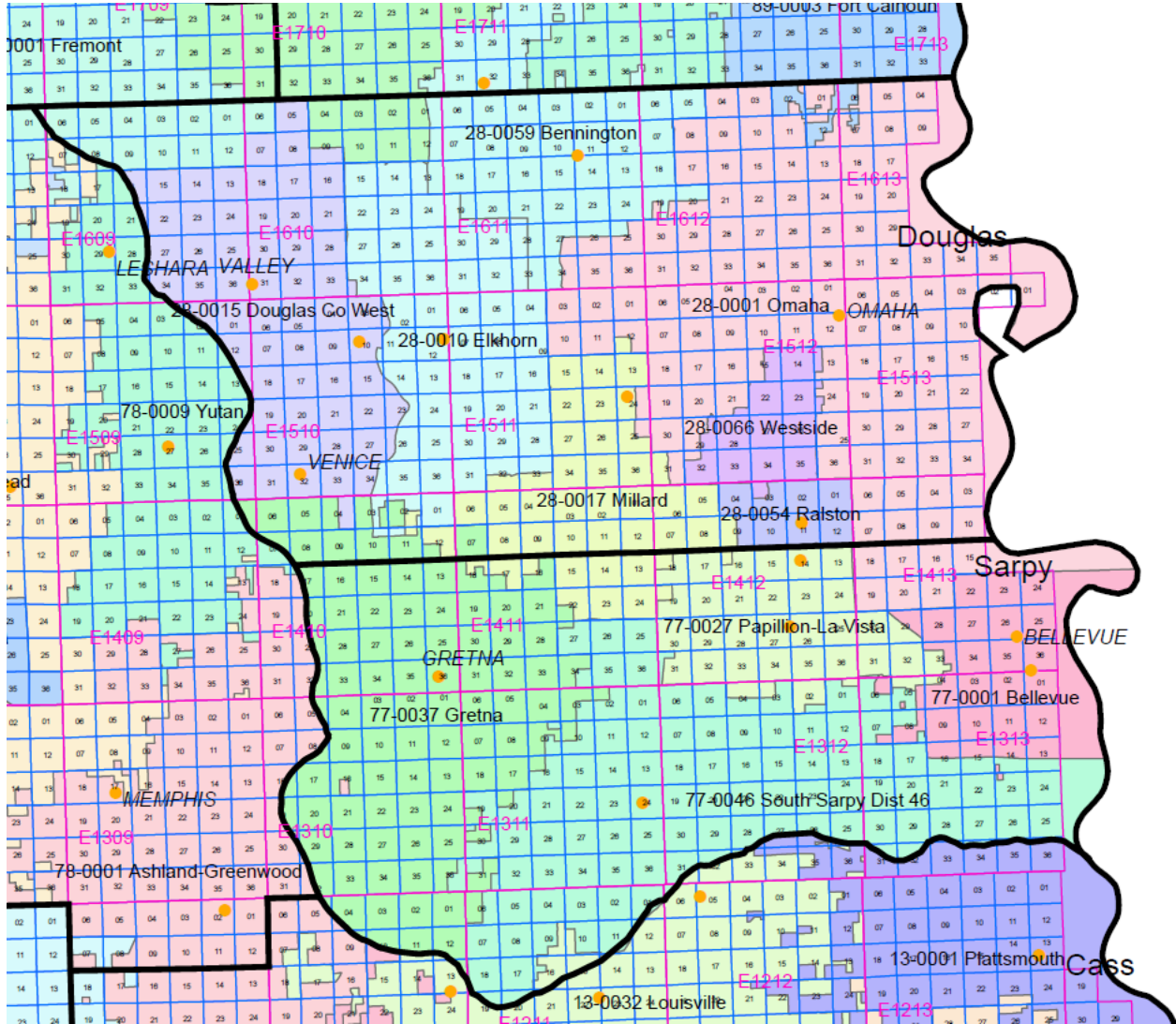
By: _____
Authorized Official

BOARD OF EDUCATION AND SCHOOL
BOARD OF SARPY COUNTY SCHOOL
DISTRICT 77-0027, a/k/a PAPILLION LA VISTA
PUBLIC SCHOOLS

By: _____
Authorized Official

EXHIBIT "1"
(MAPS)

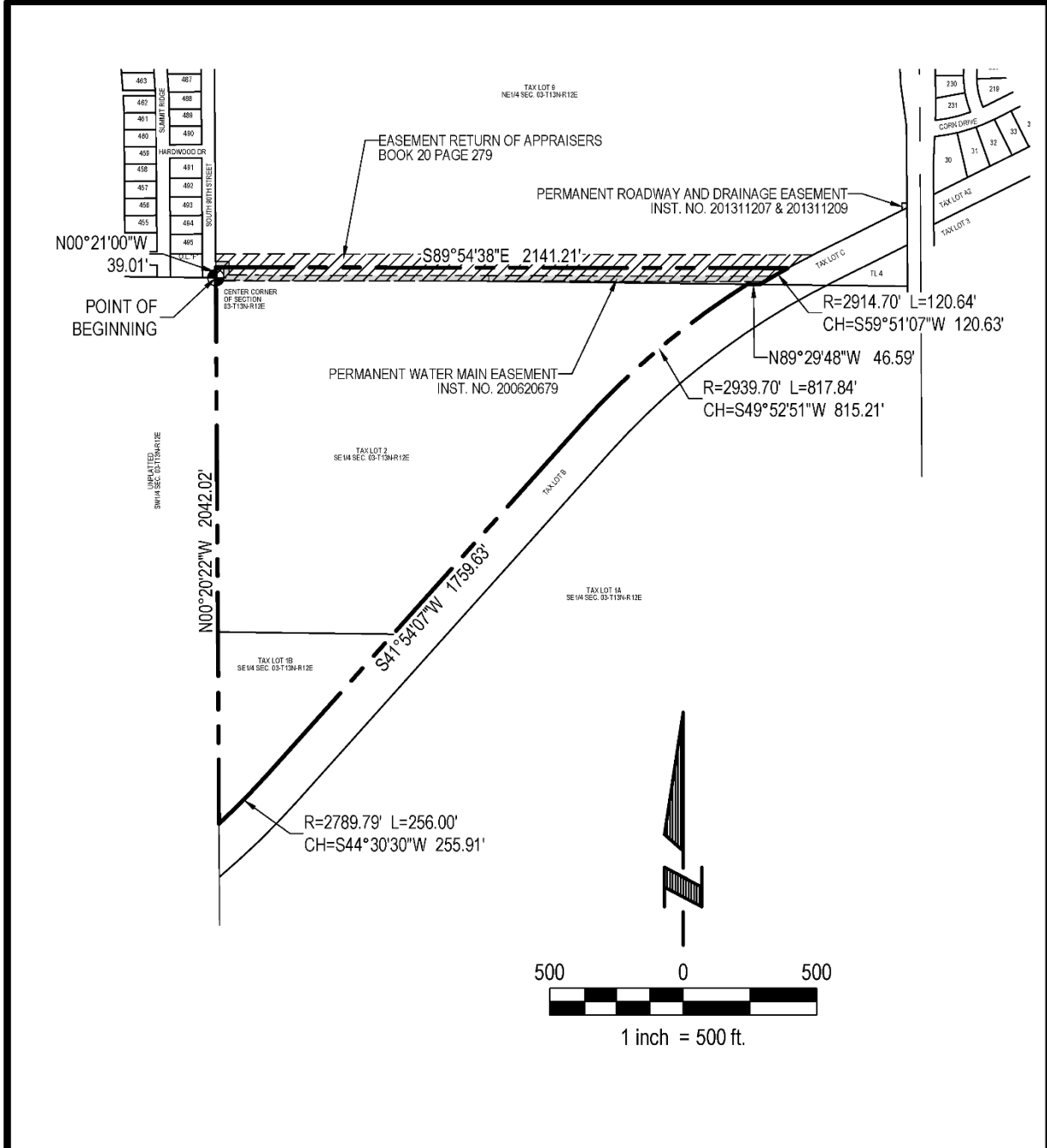
ESTABLISHED DISTRICTS



The intention is to include in this Map the entire boundaries and geographic area and territory of the existing SP and the existing PL which is legally within such school districts. It is further the intention to exclude from this Map any boundaries and geographic area and territory which is not legally within the existing SP and the existing PL. Further, in the event of conflicting descriptions between this Map and official records and documents on file with the County Clerks of Sarpy and/or Douglas Counties, Nebraska, and such other appropriate officials who are required by law to maintain school district boundary lines and description records, such official records and documents shall be controlling as to what are the proper and legal descriptions and boundaries of the existing SP and PL.

EXHIBIT "1"
(MAPS)

BOUNDARIES PROPOSED UNDER THIS PLAN



SEE SHEET 2 FOR LEGAL DESCRIPTION

 E & A CONSULTING GROUP, INC. <i>Engineering Answers</i>	E & A CONSULTING GROUP, INC. Engineering • Planning • Environmental & Field Services 10909 Mill Valley Road, Suite 100 • Omaha, NE 68154 Phone: 402.895.4700 • Fax: 402.895.3599		TAX LOTS 1B, 2 AND 9 SEC. 3, T13N, R12E SARPY COUNTY, NEBRASKA
	Job No.: P2016.161.001 Drawn by: CJV	Date: 01-18-2022 Scale: 1" = 500'	

EXHIBIT "1"
(MAPS)

BOUNDARIES PROPOSED UNDER THIS PLAN

LEGAL DESCRIPTION

A TRACT OF LAND BEING PART OF TAX LOT 9, AND ALSO ALL OF TAX LOT 1B, AND ALSO ALL OF TAX LOT 2, ALL BEING TAX LOTS LOCATED IN THE SE1/4 OF THE NE1/4, AND ALSO THE SW1/4 OF THE NE1/4, AND ALSO THE NE1/4 OF THE SE1/4, AND ALSO THE SW1/4 OF THE SE1/4, AND ALSO THE NW1/4 OF THE SE1/4, ALL LOCATED IN SECTION 3, TOWNSHIP 13 NORTH, RANGE 12 EAST OF THE 6TH P.M., SARPY COUNTY, NEBRASKA, MORE PARTICULARLY DESCRIBED AS FOLLOWS:

BEGINNING AT THE CENTER OF SAID SECTION 3, SAID POINT ALSO BEING THE SOUTHWEST CORNER OF SAID TAX LOT 9, AND ALSO THE NORTHWEST CORNER OF SAID TAX LOT 2, AND ALSO BEING ON THE EASTERLY RIGHT-OF-WAY LINE OF SOUTH 90TH STREET; THENCE N00°21'00"W (ASSUMED BEARING) ALONG THE WEST LINE OF SAID NE1/4 OF SECTION 3, SAID LINE ALSO BEING THE WEST LINE OF SAID TAX LOT 9, AND ALSO SAID EASTERLY RIGHT-OF-WAY LINE OF SOUTH 90TH STREET, A DISTANCE OF 39.01 FEET; THENCE S89°54'38"E, A DISTANCE OF 2141.21 FEET TO A POINT ON THE SOUTHERLY LINE OF SAID TAX LOT 9, SAID POINT ALSO BEING ON THE NORTHERLY RIGHT-OF-WAY LINE OF THE ABANDONED ROCK ISLAND RAILROAD, SAID POINT ALSO BEING ON THE NORTHERLY LINE OF SAID TAX LOT C; THENCE SOUTHWESTERLY ALONG SAID SOUTHERLY LINE OF TAX LOT 9, SAID LINE ALSO BEING SAID NORTHERLY RIGHT-OF-WAY LINE OF THE ABANDONED ROCK ISLAND RAILROAD, SAID LINE ALSO BEING SAID NORTHERLY LINE OF TAX LOT C, ON A CURVE TO THE LEFT WITH A RADIUS OF 2914.70 FEET, A DISTANCE OF 120.64 FEET, SAID CURVE HAVING A LONG CHORD WHICH BEARS S59°51'07"W, A DISTANCE OF 120.63 FEET TO A POINT ON THE NORTH LINE OF TAX LOT B, A TAX LOT LOCATED IN SAID SECTION 3, SAID POINT ALSO BEING THE SOUTHWEST CORNER OF SAID TAX LOT C, SAID POINT ALSO BEING ON THE NORTH LINE OF SAID SE1/4 OF SECTION 3; THENCE N89°29'48"W ALONG SAID NORTH LINE OF TAX LOT B, SAID LINE ALSO BEING SAID NORTH LINE OF THE SE1/4 OF SECTION 3, AND ALSO SAID NORTHERLY RIGHT-OF-WAY LINE OF THE ABANDONED ROCK ISLAND RAILROAD, A DISTANCE OF 46.59 FEET TO THE NORTHWEST CORNER OF SAID TAX LOT B, SAID POINT ALSO BEING THE NORTHEAST CORNER OF SAID TAX LOT 2; THENCE SOUTHWESTERLY ALONG SAID NORTHERLY RIGHT-OF-WAY LINE OF THE ABANDONED ROCK ISLAND RAILROAD, SAID LINE ALSO BEING THE WESTERLY LINE OF SAID TAX LOT B, AND ALSO THE EASTERLY LINE OF SAID TAX LOT 2, AND ALSO THE EASTERLY LINE OF SAID TAX LOT 1B, ON THE FOLLOWING THREE (3) DESCRIBED COURSES: (1) SOUTHWESTERLY ON A CURVE TO THE LEFT WITH A RADIUS OF 2939.70 FEET, A DISTANCE OF 817.84 FEET, SAID CURVE HAVING A LONG CHORD WHICH BEARS S49°52'51"W, A DISTANCE OF 815.21 FEET; (2) THENCE S41°54'07"W, A DISTANCE OF 1759.63 FEET; (3) THENCE SOUTHWESTERLY ON A CURVE TO THE RIGHT WITH A RADIUS OF 2789.79 FEET, A DISTANCE OF 256.00 FEET, SAID CURVE HAVING A LONG CHORD WHICH BEARS S44°30'30"W, A DISTANCE OF 255.91 FEET TO A POINT ON THE WEST LINE OF SAID SW1/4 OF SECTION 3, SAID POINT ALSO BEING THE SOUTHWEST CORNER OF SAID TAX LOT 1B; THENCE N00°20'22"W ALONG SAID WEST LINE OF THE SW1/4 OF SECTION 3, SAID LINE ALSO BEING THE WEST LINE OF SAID TAX LOT 1B, AND ALSO THE WEST LINE OF SAID TAX LOT 2, A DISTANCE OF 2042.02 FEET TO THE POINT OF BEGINNING.

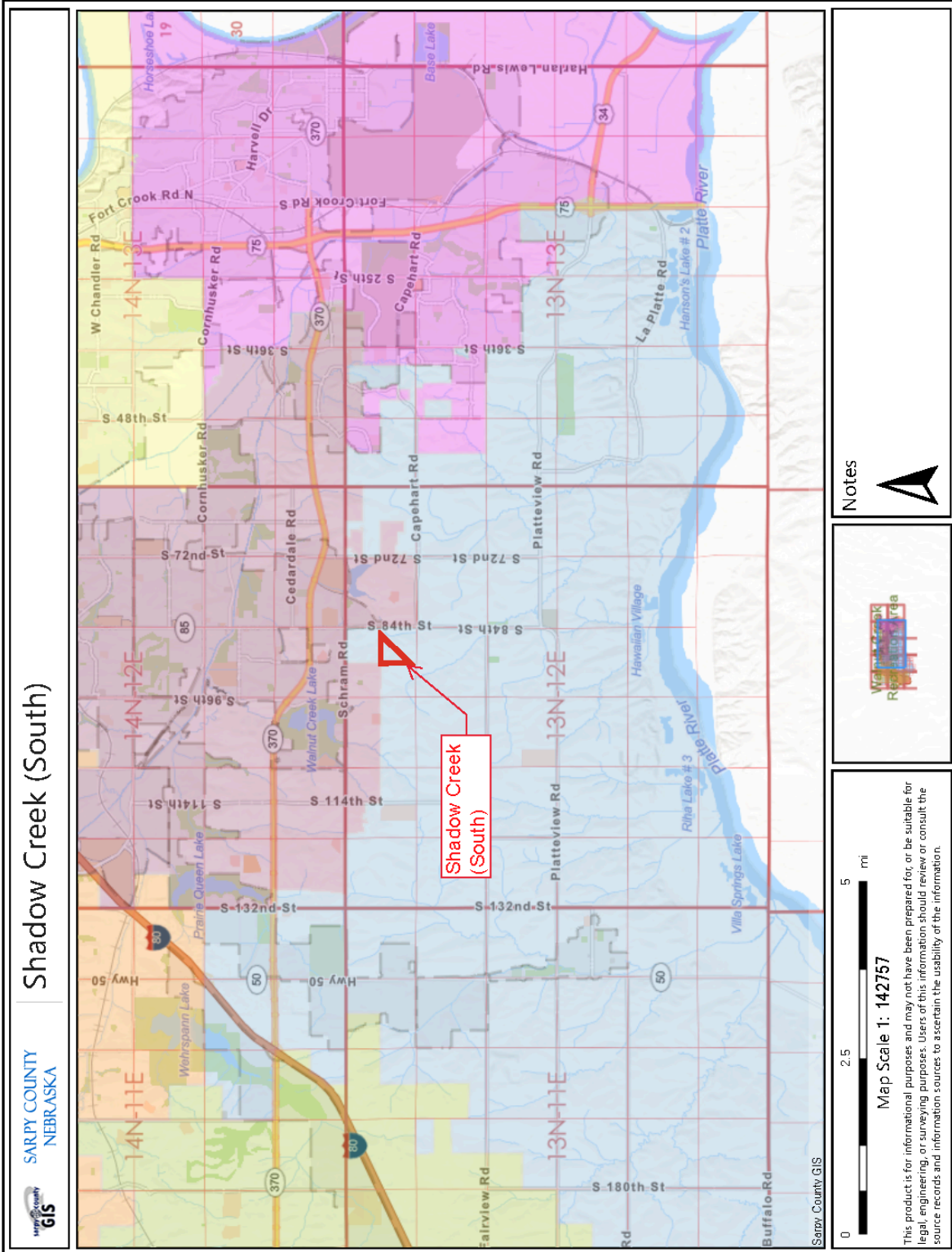
SAID TRACT OF LAND CONTAINS AN AREA OF 2,022,540 SQUARE FEET OR 46.431 ACRES, MORE OR LESS.

SEE SHEET 1 FOR DRAWING.

 E & A CONSULTING GROUP, INC. Engineering Answers	E & A CONSULTING GROUP, INC. Engineering • Planning • Environmental & Field Services 10909 Mill Valley Road, Suite 100 • Omaha, NE 68154 Phone: 402.895.4700 • Fax: 402.895.3599		TAX LOTS 1B, 2 AND 9 SEC. 3, T13N, R12E <small>SARPY COUNTY, NEBRASKA</small>
	Job No.: P2016.161.001	Date: 01-18-2022	
Drawn by: CJV	Scale: 1" = 500'	Sht: 2 of 4	

EXHIBIT "1"
(MAPS)

BOUNDARIES PROPOSED UNDER THIS PLAN



Shadow Creek (South)

SARPY COUNTY
NEBRASKA



Notes

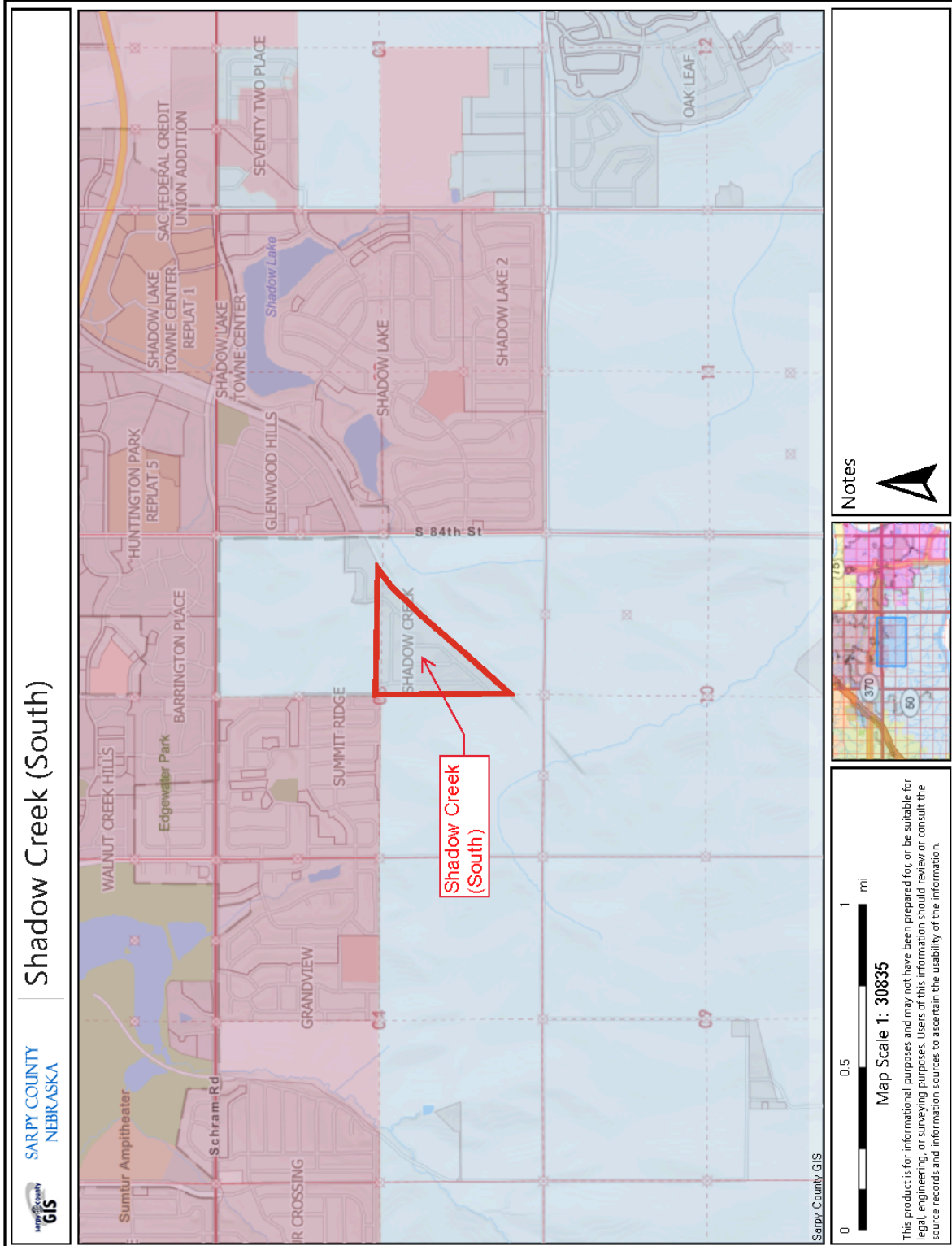


Map Scale 1: 142757

This product is for informational purposes and may not have been prepared for, or be suitable for, legal, engineering, or surveying purposes. Users of this information should review or consult the source records and information sources to ascertain the usability of the information.

EXHIBIT "1"
(MAPS)

BOUNDARIES PROPOSED UNDER THIS PLAN



Subject: Portal Elementary Bid Information

Meeting Date: February 10, 2025

Prior Meeting Discussion Date: November 25, 2024

Department: Business Services

Action Desired: Approval Discussion _____ Information Only _____

Background:

Bids were opened at the Papillion La Vista Community Schools Administrative Office on Jan. 21 at 2:00 P.M., for the project designated as PORTAL ELEMENTARY SCHOOL RENOVATION.

Eight bids were received by the District. The bid tab showing all bids received is attached. The low, qualified lump sum bid is from D.R. Anderson Constructors out of Omaha, NE with a total bid of \$4,350,358, including alternates.

It is recommended the District accept the low bid from D.R. Anderson Constructors. The bid has been reviewed and verified by BCDM Architects and is within the estimated budget for the project.

Recommendation:

Motion to (1) approve the lump sum bid and authorize and approve the construction contract with D.R. Anderson Constructors for the low bid amount of \$4,350,358 for the Portal Elementary project and (2) delegates authority to and authorizes, approves and directs the President of the Board of Education, Superintendent of Schools, Assistant Superintendent of Business Services or a designee for the school district to sign, execute and deliver such construction contract, sign and approve any change orders, retain necessary professionals for assistance, pay the contract price, approve change order increases, and expenses related to the construction project and site preparation work and take all other action necessary to complete any requirements or obligations under the construction project and contract.

Responsible Person: Brett Richards

Superintendent's Approval _____
Andrew J. Rikli
Signature

22 January 2025

Mr. Brett Richards
Assistant Superintendent of Business Services
Papillion La Vista Community Schools
420 South Washington Street
Papillion, NE 68046

RE: Portal Elementary School Addition and Renovation
Papillion La Vista Community Schools
BCDM Project No. 3409-01

Dear Brett:

On January 21, 2025, bids were received for the above referenced project at the Papillion La Vista Public Schools Administrative Offices. Per the attached bid tabulation sheet, eight (8) bids were received with a **low base bid of \$4,309,300 from D.R. Anderson Constructors**. Along with the Base Bid, Alternate Bids were received as follows: Alternate No. 1 to remove vinyl wallcovering and cork tack surface in its entirety in the additional amount of \$33,385 and Alternate No. 2 to provide optional standby branch (Article 702) from generator and connections for an additional amount of \$7,673.

Earlier this week we had phone conversations with representatives of D.R. Anderson Constructors. During these conversations we were able to discuss the bids and D.R. Anderson's experience. Based upon these conversations we have no reason to believe that this Contractor will not successfully perform on this project. **We would therefore recommend a contract be awarded to D.R. Anderson Constructors in the amount of \$4,350,358 (Base Bid plus Alternates) for the Portal Elementary School Addition and Renovation project.**

Please let me know if you should have any questions or concerns.

Sincerely,



Greg Stieren
Principal, AIA

GS/mmm
Attachment: Bid Tab

e-copy: File: 3409-01_5-2



1015 North 98th Street, Suite 300
Omaha, NE 68114

January 21, 2025

BID TABULATION - PLCS - PORTAL ELEMENTARY SCHOOL ADDITION AND RENOVATION

BCDM No. 3409-01

	ALL PURPOSE CONSTRUCTION	CHEEVER CONSTRUCTION	DEAN SNYDER CONSTRUCTION	D.R. ANDERSON CONSTRUCTORS	GENESIS CONTRACTING GROUP
Lump Sum Base Bid	\$4,648,000	\$4,516,000	\$4,986,200	\$4,309,300	\$4,855,000
Addenda (2)	Yes	Yes	Yes	Yes	Yes
Bid Security	Yes	Yes	Yes	Yes	Yes
Alternates:					
No. 1: Remove vinyl wall covering and cork tack surface.	\$24,000	\$31,000	\$35,000	\$33,385	\$43,000
No. 2: Provide optional standby branch (Article 702) from generator and connections.	\$13,000	\$15,000	\$30,000	\$7,673	\$21,000
Unit Prices:					
1. Provision and installation of one (1) two port data outlet, cable, termination, testing and labeling installed.	\$600	\$960	\$1,100	\$946	\$550
Voluntary Substitutions	N/A	N/A	N/A	N/A	N/A

Alternates

1. Remove vinyl wall covering and cork tack surface in its entirety. Prep wall to provide smooth paintable surface. If smooth surface can not be achieved with patching, provide 1/4 inch drywall. Prep and paint new surface P-1. Coordinate extent with Interior Finish Schedule.

2. Provide optional standby branch (Article 702) from generator and connections as shown on the Electrical Drawings.

Unit Prices

1. Provision and installation of one (1) two port data outlet, cable, termination, testing and labeling installed including any rough-in type at any location.

BID TABULATION - PLCS - PORTAL ELEMENTARY SCHOOL ADDITION AND RENOVATION

BCDM No. 3409-01

	KINGERY CONSTRUCTION	MECO-HENNE CONTRACTING	RONCO CONSTRUCTION
Lump Sum Base Bid	\$4,718,000	\$4,728,000	\$4,811,000
Addenda (2)	Yes	Yes	Yes
Bid Security	Yes	Yes	Yes
Alternates:			
No. 1: Remove vinyl wall covering and cork tack surface.	\$19,000	\$45,000	\$41,000
No. 2: Provide optional standby branch (Article 702) from generator and connections.	\$12,500	\$13,000	\$12,000
Unit Prices:			
1. Provision and installation of one (1) two port data outlet, cable, termination, testing and labeling installed.	\$900	\$1,000	\$1,000
Voluntary Substitutions	N/A	N/A	N/A

Alternates

1. Remove vinyl wall covering and cork tack surface in its entirety. Prep wall to provide smooth paintable surface. If smooth surface can not be achieved with patching, provide 1/4 inch drywall. Prep and paint new surface P-1. Coordinate extent with Interior Finish Schedule.

2. Provide optional standby branch (Article 702) from generator and connections as shown on the Electrical Drawings.

Unit Prices

1. Provision and installation of one (1) two port data outlet, cable, termination, testing and labeling installed including any rough-in type at any location.

Subject: PLC School District Mass Communication Vendor

Meeting Date: February 10, 2025

Prior Meeting Discussion Date:

Department: Board of Education

Action Desired: Approval _____ Discussion X Information Only _____

Background:

The district uses Finalsite Mass Notification (formerly Blackboard) for school-to-home communications. Our current system, Blackboard Mass Notification, will no longer be supported by Finalsite, necessitating a change in our school-to-home communication platform. In November 2024, we began evaluating available solutions to ensure continued excellent service to our community. Our review process included analyzing system capabilities, researching K-12 communication best practices, and evaluating proposals from multiple vendors.

After thorough assessment, we recommend transitioning to Apptegy's platform, which offers comprehensive notification capabilities (text, email, phone, app, social media), enhanced analytics, and improved user experience. While some current features will require alternative solutions, we have plans to address these gaps.

Recommendation: Discussion Only

Responsible Person: Dr. Christopher Villarreal

Superintendent's Approval _____
Andrew J. Rhee
Signature

RETURN TO AGENDA

Subject: Nebraska Continuous Improvement Review Summary 2025

Meeting Date: February 10, 2025

Department: Curriculum

Action Desired: Approval _____ Discussion _____ Information Only X

Background:

January 20th-23rd the District participated in their accreditation review through the Nebraska Continuous Improvement Process with NDE. This process is a five year requirement that is outlined in Section 009 of Rule 10. This process involves an external team that provides feedback to the district and affirms compliance with the law. This presentation will be an overview of the exit report provided by the external team and share how it will align with the next round of strategic planning in the upcoming months.

Responsible Person: Shureen Seery

Superintendent's Approval _____
Andrew J. Rikli
Signature

RETURN TO AGENDA

Subject: Certified Staffing Needs for 2025-26 School Year

Meeting Date: February 10, 2025

Prior Meeting Discussion Date: January 13, 2025, Board Meeting
February 10, 2025, HR/SS Subcommittee Meeting

Department: Human Resources

Action Desired: Approval _____ Discussion Information Only _____

Background:

Information will be presented regarding staffing requests for the 2025-26 school year.

Recommendation:

Responsible Person: Dr. Kati Settles

Superintendent's Approval _____
Andrew J. Rikli
Signature

RETURN TO AGENDA

Subject: Review Policy 2000 Series-Administration

Meeting Date: February 10, 2025

Prior Meeting Discussion Date:

Department: Board of Education

Action Desired: Approval _____ Discussion _____ Information Only X

Background:

The Series 2000 – Administration Board policies are up for annual review. Please forward any changes you would like to make to Dr. Settles. Recommended changes will be discussed at the February 24 board meeting, with possible action at the March 10 meeting. If there are no changes recommended, the Board will acknowledge review of the Series 2000 policies at the February 24 meeting.

Recommendation: Direct suggested changes to the 2000 board policies to Dr. Settles.

Responsible Person: Dr. Kati Settles

Superintendent's Approval _____
Andrew J. Rikli
Signature

RETURN TO AGENDA