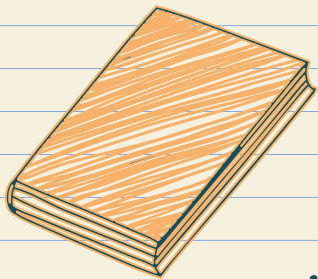
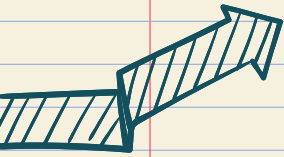


# Academic Planning



Class of 2029

GCHS School Counseling Team



# TABLE OF CONTENTS

01

## Documents Given

- Curriculum Guide
- Four Year Plan
- Dual Credit Sheet
- Course Selection Sheet
- New Diploma Packet

02

## Review Curriculum Guide

- Diploma Requirements
- Buckets 1/2/3
- 3 E's- Enlist / Enroll / Employ

03

## Early College Program

- Indiana College Core
- Associates Degree

04

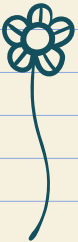
## Course Selection Sheet

- Required
- Electives
- Think: What you need and want

05

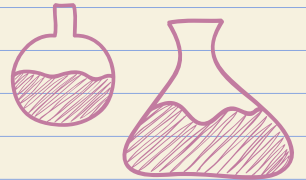
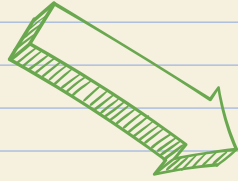
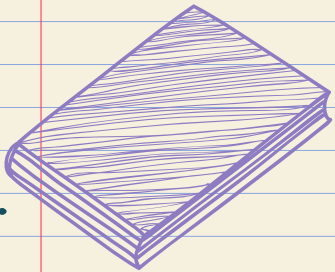
## Scheduling

- Junior High School
  - January 29th - February 5th
- St. Mary's
  - February 6th & February 7th



01

Documents  
Given





Curriculum Guide



New Diploma



Dual Credit Sheet



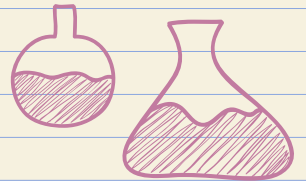
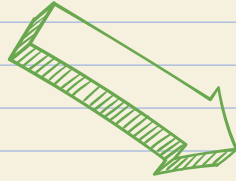
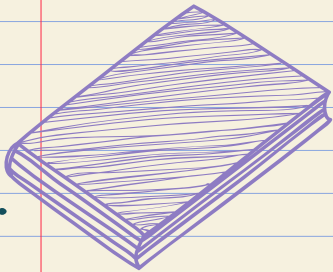
Four Year Plan



Course Selection Sheet

02

Review 2029  
Booklet &  
Curriculum Guide



# New Indiana Diploma

## 8 CREDITS

- 2 credits: English 9
- 1 credit: Communications-focused course
- 5 additional English credits

## 7 CREDITS

- 2 credits: Algebra I
- 1 credit: Personal Finance
- 4 additional math credits

## 7 CREDITS

- 2 credits: Biology I
- 1 credit: Computer Science
- 2 additional science credits
- 2 STEM-focused credits

## 5 CREDITS

- 2 credits: U.S. History
- 1 credit: U.S. Government
- 2 credits: World Perspectives (Flexible options, including advanced world language or world-focused social studies courses)

## 2 CREDITS

- 1 credit: Physical Education
- 1 credit: Health & Wellness

N/A

## 12 CREDITS

Students are encouraged to utilize the new readiness-seals to align these personalized electives with their unique goals. Personalized electives can include a variety of courses, such as CTE, Performing or Fine Arts, and World Languages.

## 1 CREDIT

- 1 credit: Preparing for College & Careers

**42 CREDITS**

# Diploma Requirements

## ● Bucket #1:

- New Indiana Diploma
- Seal (3 options)
- Seals + (3 options)

## ● Bucket #2:

- Employability Skills
- PBL
- SBL
- WBL

## ● Bucket #3:

- Postsecondary-Ready Competencies
- 9 options

# Enrollment

## Honor Seal

## Honor Plus Seal

4 World Language and 6 Social Studies credits

Earn the Honors Enrollment Seal, plus:

8 Math credits

- Algebra I plus Geometry, Algebra II, and Pre-Calculus, or any advanced math credits aligned to their course of study

Earn a credential of value that may include, for example:

- Associate degree
- Technical Certificate
- Indiana College Core
- AP Scholar with Distinction

6 Science credits

- Biology I plus Chemistry and Physics or any advanced lab science credits aligned to their course of study

Complete at least 75 hours of work-based learning (may include multiple experiences that are paid, unpaid, on-site, or simulated)

Earn a C- or higher in all courses and earn a cumulative 3.0 GPA

Demonstrate skill development in Communication, Collaboration, and Work Ethic

Complete one of the following:

- Earn 4 credits in AP courses and take corresponding exams
- Earn 6 college credits
- Score a 1250 on the SAT or a 26 on the ACT
- Earn two of the following:
  - At least 3 college credits
  - 2 credits in AP courses and take corresponding exams



# Employment

## Honor Seal

Complete one of the following:

- A market-driven credential of value aligned to a specific occupation
- 3 courses in a Career and Technology Education (CTE) pathway
- An approved career preparation experience aligned to Indiana's CSA program, or
- An approved, locally-created pathway

- Complete 150 hours of work-based learning (may include multiple experiences that are paid, unpaid, on-site, or simulated)

- Demonstrate skill development in Communication, Collaboration, and Work Ethic

Meet attendance goal

## Honor Plus Seal

Earn the Honors Employment Seal, plus:

Earn a market-driven credential of value that may include, for example:

- Associate degree
- Technical Certificate
- Indiana College Core
- Advanced industry certificate

Complete additional work-based learning (total of 650 hours in one or more experiences) that may include, for example:

- Pre-Apprenticeship
- Modern Youth Apprenticeship

Demonstrate skill development in Communication, Collaboration, and Work Ethic, and any additional skills determined locally

# Enlistment & Service

## Honor Seal

Complete **one** of the following:

- Introduction to Public Service course or approved locally-created equivalent
  - Emphasis on developing an awareness of the physical standards and character required for service
- One year of JROTC in high school

Achieve a score of 31 on the ASVAB and complete one of the following:

- All three components of the Career Exploration Program
- A career exploration tool approved by the IDOE

Meet attendance goal

Demonstrate skill development in Communication, Collaboration, and Work Ethic

- Externally verified through a mentorship experience with current military personnel, veterans, or other public safety professionals

## Honor Plus Seal

Earn the Honors Employment Seal, plus:

Earn a market-driven credential of value that may include, for example:

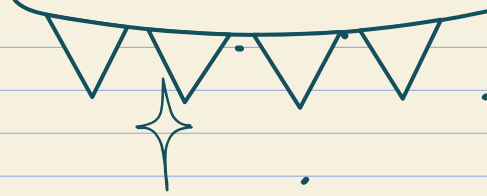
- Associate Degree
- Technical Certificate
- Indiana College Core
- Advanced industry certificate

Complete additional work-based learning (total of 650 hours in one or more experiences) that may include, for example:

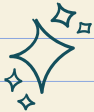
- Pre-Apprenticeship
- Modern Youth Apprenticeship

Demonstrate skill development in Communication, Collaboration, and Work Ethic, and any additional skills determined locally

# More to Come.....



- New information about the new diploma requirements was recently released; not yet finalized.
- As we continue to learn new information about the new diploma requirements, discussions will need to take place and decisions will need to be made that will impact grades 10-12.



Classes

Pg. 9 - 55

NLPS &  
Locally  
Created  
Pathways

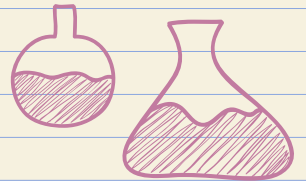
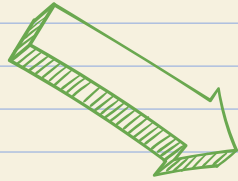
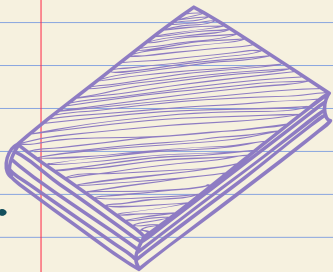
Pg. 56 & 57

E.C.  
Program

Pg. 60 - 65

03

Early College  
Program



# Indiana College Core- ICC

## General Education Competency Areas

Written  
Communication

Quantitative  
Reasoning

Social &  
Behavioral  
ways of  
Knowing

Speaking &  
Listening

Scientific  
ways of  
Knowing

Humanistic &  
Artistic ways  
of Knowing

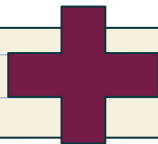
To earn the Indiana College Core, students must take at least three credit hours in six general education competency areas, as well as an additional 12 "elective" credit hours from the same competencies.

(totaling 30 credit hours)

# Associate Degree of General Studies

## Earn the Indiana College Core

- ❖ Written Communication
- ❖ Speaking & Listening
- ❖ Quantitative Reasoning
- ❖ Scientific ways of Knowing
- ❖ Social & Behavioral ways of Knowing
- ❖ Humanistic & Artistic ways of Knowing



## Require Courses

- ❖ IVYT 111 - Student Success
- ❖ GENS 279- General Studies Capstone

## Professional - Technical Core

- ❖ ENGL 215- Rhetoric and Argument

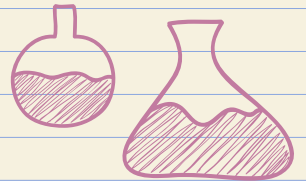
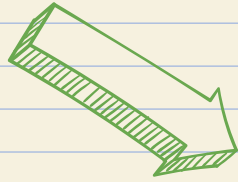
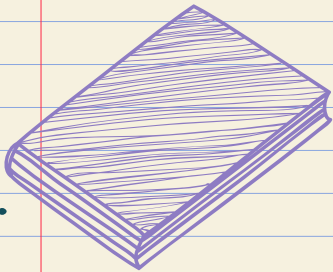
## Additional Professional - Technical Core (ONLY 1 COURSE REQUIRED)

- ❖ COMM 102- Intro to Interpersonal Comm.
- ❖ PHIL 102- Intro to Ethics
- ❖ POLS 101- Intro to American Govt & Politics

Students must also complete an additional 22 electives  
(totaling 60 credit hours)

05

Course Selection  
Sheet





# English / Language Arts

## ENGLISH 9 OPTIONS

1004-3A English 9/1A

1004-4A English 9/2A

1004-3 English 9/1

1004-4 English 9/2

1004-3SP English 9/1SP

1004-4SP English 9/2SP

# World Languages

## FRENCH

2020-1 French I/1

2020-2 French I/2

## SPANISH

2120-1 Spanish I/1

2120-2 Spanish I/2

# Mathematics

## 8TH GRADE MATH

2520-1 Algebra I (1<sup>st</sup> Sem.)  
2520-2 Algebra I (2<sup>nd</sup> Sem.)

2520-1S Algebra I (1<sup>st</sup> Sem.)  
2520-2S Algebra I (2<sup>nd</sup> Sem.)

## ALGEBRA I

2532-1 Geometry (1<sup>st</sup> Sem.)  
2532-2 Geometry (2<sup>nd</sup> Sem.)

2532-1H Geometry Honors  
2532-2H Geometry Honors

# Sciences

## 8TH GRADE SCIENCE

3024-1 Biology I  
3024-2 Biology I

## BIOLOGY

3044-1 Earth & Space Science I  
3044-2 Earth & Space Science I

5218-1 PLTW-Principles of Biomed  
5218-2 PLTW-Principles of Biomed

## Social Studies

### Optional as a 9th grader

1548-1	World History & Civilization
1548-2	World History & Civilization

## PE & Health

### 8th Grade- High School PE Credit

3560-1	Elective PE/Adv. PE
3560-2	Elective PE/Adv. PE
3560-4F	Elective PE/Aquatics
3560-4S	Elective PE/Aquatics

### REQUIRED

3506-6	Health & Wellness
--------	-------------------

## St. Mary's

*or if you did not earn PE or PCC during your 8th grade year at the Junior High School*

### You will have a few options to complete these courses:

- **Summer School**
  - Physical Education
  - Preparing for College & Career
- **PE during school year**
- **PE Waiver**
  - School Sport
  - Marching Band
  - Show Choir



## Agricultural Education

7117-1 Principles of Agriculture  
7117-2 Principles of Agriculture

## Arts

4000 Intro to Two-Dim. Art  
4004-I Adv. Two-Dim. Art I

## Business / Marketing / Information Technology

4562-1 Principles of Business Management  
4562-2 Principles of Business Management  
  
7183-1 Principles of Computing  
7183-2 Principles of Computing

### **REQUIRED**

**4565 Comp. Foundation for Digital Age**

## Engineering & Technology Education

- 7108-1 Principles of Adv. Manufacturing
- 7108-2 Principles of Adv. Manufacturing
- 7130-1 Principles of Construction Trades
- 7130-2 Principles of Construction Trades
- 4802-1 PLTW-Intro to Engineering Design
- 4802-2 PLTW-Intro to Engineering Design

## Family & Consumer Sciences

- 7161-1 Principles of Teaching
- 7161-2 Principles of Teaching
- 7160-1 Principles of Early Childhood Education
- 7160-2 Principles of Early Childhood Education
- 7173-1 Principles of Culinary & Hospitality
- 7173-2 Principles of Culinary & Hospitality

# Music

## BAND

4160-1	Beginning Concert Band
4160-2	Beginning Concert Band
4168-1	Intermediate Concert Band
4168-2	Intermediate Concert Band
4162-1	Instrumental Percussion Band
4162-2	Instrumental Percussion Band

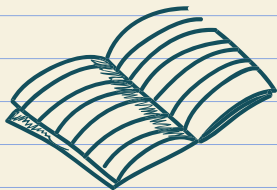
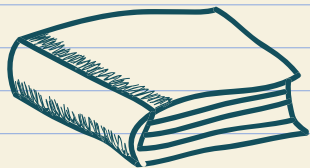
## CHOIR

4186-1	Intermediate Chorus
4186-2	Intermediate Chorus
4186-1W	Int. Chorus/Women's Choir
4186 2W	Int. Chorus/Women's Choir
4188-1	Adv. Chorus/Show Choir
4188-2	Adv. Chorus/Show Choir

## ELECTIVE

4204	Piano and Electric Keyboard
4206	Music History/Appreciation

# Course Request



First Semester  
Course No. Course Name

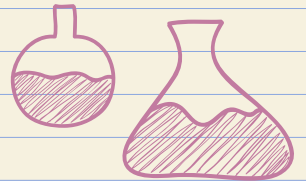
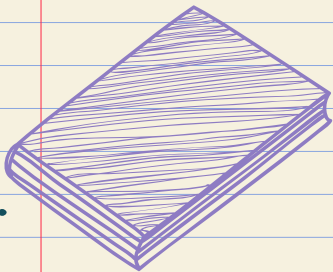
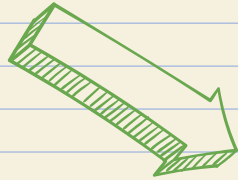
\_\_\_\_\_ ENGLISH 9  
\_\_\_\_\_ MATH  
\_\_\_\_\_ SCIENCE  
4565 COMP FOUNDATIONS  
\_\_\_\_\_  
\_\_\_\_\_  
\_\_\_\_\_  
SE-1 SEMINAR

Second Semester  
Course No. Course Name

\_\_\_\_\_ ENGLISH 9  
\_\_\_\_\_ MATH  
\_\_\_\_\_ SCIENCE  
3506-6 HEALTH  
\_\_\_\_\_  
\_\_\_\_\_  
\_\_\_\_\_  
SE-2 SEMINAR

06

Scheduling  
Dates





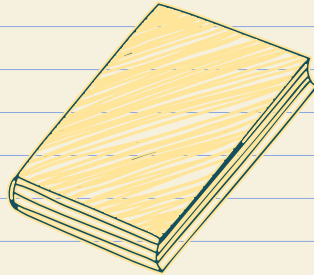
# Scheduling- Meeting Dates

Junior High School

January 29th - February 5th

St. Mary's

February 6th & February 7th



# Questions?

Contact your student's counselor

<b>Last Name Begins With</b>	<b>Counselor</b>	<b>Counselor's e-mail</b>
A-G & T-Z	Mrs. Hurd	churd@greensburg.k12.in.us
H - S	Mrs. Tebbe	ktebbe@greensburg.k12.in.us