



STATE OF CONNECTICUT – COUNTY OF TOLLAND  
INCORPORATED 1786

## TOWN OF ELLINGTON

55 MAIN STREET – PO BOX 187  
ELLINGTON, CONNECTICUT 06029-0187  
[www.ellington-ct.gov](http://www.ellington-ct.gov)

TEL. (860) 870-3120

**TOWN PLANNER'S OFFICE**

FAX (860) 870-3122

### **ECONOMIC DEVELOPMENT COMMISSION REGULAR MEETING AGENDA**

**WEDNESDAY, FEBRUARY 12, 2025, 7:00 PM**

**IN-PERSON ATTENDANCE: TOWN HALL ANNEX, 57 MAIN STREET, ELLINGTON, CT**

**REMOTE ATTENDANCE: VIA ZOOM MEETING, INSTRUCTIONS PROVIDED BELOW**

#### **I. CALL TO ORDER:**

#### **II. PUBLIC COMMENTS (on non-agenda items):**

#### **III. ACTIVE BUSINESS:**

1. 2025 Revaluation Process Presentation, John Rainaldi, Ellington Town Assessor
2. Report: Tax Incentive/Abatement Programs
3. Report: Tolland County Chamber of Commerce
4. Agricultural Initiatives
5. CEDAS
  - a. Best Practices – Monthly Customer Service Satisfaction Survey Results
  - b. Invoice for 2025 Individual and Commission Membership Dues
6. Report: Current Economic Activity
  - a. No Coast Taqueria Mexican Fusion Restaurant, 12 Main Street, Grand Opening February 4, 2025, Hours: Tuesday – Saturday, 11AM – 8PM. (To-Go Menu Attached)
  - b. New Retail Building, West Road (west side across from Meadowview Plaza).
  - c. Data Capture Solutions, 160 West Road, Office Building Addition and Renovations.

#### **IV. ADMINISTRATIVE BUSINESS:**

1. Fiscal Year 2024-2025 Budget & Expenditures Update.
2. Approval of January 8, 2025, Regular Meeting Minutes.
3. Election of officers.
4. Correspondence/Discussion:
  - a. Request from AdvanceCT - Review of Town Profiles Top 5 Key Employers.

#### **V. ADJOURNMENT:**

**Next Regular Meeting: March 12, 2025**

---

Instructions to attend remote Zoom meeting listed below. The agenda is posted on the Town of Ellington's webpage ([www.ellington-ct.gov](http://www.ellington-ct.gov)) under Agendas & Minutes, Economic Development Commission.

#### **Join Zoom Meeting:**

<https://us06web.zoom.us/j/87167285403>

**Meeting ID: 871 6728 5403**

**Password: 527699**

#### **Dial by your location:**

**+1 646 558 8656 US (New York)**

**Meeting ID: 871 6728 5403**

**Password: 527699**

COMMISSIONERS: TO ASSIST IN ESTABLISHING QUORUMS REQUIRED TO CONDUCT MEETINGS, PLEASE CONTACT THE PLANNING DEPARTMENT IF YOU ARE UNABLE TO ATTEND A SCHEDULED MEETING.

# Town of Ellington 2025 Revaluation

Town of Ellington Assessor's Office  
55 Main Street  
PO Box 187  
Ellington, CT 06029

860-870-3109

[jrainaldi@ellington-ct.gov](mailto:jrainaldi@ellington-ct.gov)  
[assessor@ellington-ct.gov](mailto:assessor@ellington-ct.gov)

# Town of Ellington 2025 Revaluation

We are often asked what is a revaluation and why does it matter?

A revaluation is the process of resetting (“revaluing”) all the real estate in a municipality.

Though there are other states that assess and tax real estate differently, Connecticut assesses all real estate in any given municipality by having every property in that municipality valued as of the same effective date. A revaluation is a snapshot of values as of that specific date.

By statute, the assessment date is October 1<sup>st</sup>

Ellington’s current revaluation date is October 1, 2020

Ellington’s 2025 revaluation will update assessment values to a new revaluation date of October 1, 2025.

Ellington’s 2025 revaluation is required by statute

# Town of Ellington 2025 Revaluation

The primary purpose of a revaluation is to re-adjust assessments to current market values because property values do not change equally over time and inequalities in assessments build up. These inequalities are addressed through revaluation.

Revaluations matter because the assessments for real estate parcels all over town will change.

The Grand List, which is the sum of all assessed property in town, will also change, which it does annually. However, in a revaluation year, the changes in the Grand List are much more significant than in years when there is no revaluation.

Real estate assessments are calculated by using the 100% full market value of each real property in Town and applying the state-mandated 70% assessment ratio to the full market value.

If a property's 100% full market value is \$400,000, the 70% gross assessed value will be  $\$400,000 * 0.70$ , or \$280,000.

# Town of Ellington 2025 Revaluation

If a property owner or property qualifies for any exemptions, they are applied to reduce the gross assessment.

For example, if the gross assessment is \$280,000, and the owner qualifies for a \$6,000 veteran's exemption, the net assessment will be \$274,000 after the exemption is applied.

Tax bills are calculated by taking the net assessment and multiplying it by the mill rate, which is the tax rate. The mill rate is adopted annually through the Town's budget process.

The mill rate is calculated by taking the Grand Levy (the amount of revenue needed to be raised through taxes), divided by the Net Grand List (the sum of all taxable property in town, consisting of real estate, motor vehicles, and personal property).

1 mill equals 1/1,00<sup>th</sup> of a dollar, or .001. A mill rate of 36.00 mathematically equates to .036



# Town of Ellington 2025 Revaluation

The Grand Levy, the amount of taxes the Town must raise is a function of the budget process, will be the same whether the Town does a revaluation or not.

A revaluation does not change the total amount of taxes the Town must raise.

However, individual tax bills do change when the Town does a revaluation. Some taxpayers will see increases, while others will see decreases after any changes in the budget are factored in. Different properties change in value at different rates.

Revaluations typically see a “value shift,” typically this refers to commercial properties vs. residential properties, but it also happens in segments within the same classification. Properties that decrease less than average experience less of a shift, while properties that increase more than average experience more of a shift.

Value shifts are usually from commercial properties to residential properties, and we anticipate this will be the case in Ellington’s 2025 revaluation.

# Town of Ellington 2025 Revaluation

Connecticut municipalities are heavily dependent on property taxes as the primary means for financing municipal operations.

Connecticut municipalities do not have a local income tax or local sales tax to rely on for revenue.

Municipalities do have some revenue from state and federal grants, investment earnings, fees, conveyance taxes, and other sources, but property taxes is by far the largest portion.

In Ellington, approximately 79% of the Town's annual revenue comes from property taxes.



## Town of Ellington 2025 Revaluation

There are nearly 6,100 taxable real estate parcels in Ellington, along with over 16,600 registered motor vehicles, and nearly 1,000 personal property accounts on Ellington's Grand List.

Ellington's 2023 Grand List showed a net assessment over \$1.56 Billion. 82.5% of that assessment total was from real estate, with 12.6% from motor vehicle, and 4.9% from personal property.

Ellington has nearly 450 real estate accounts assessed under "Public Act 490" which is for farm, forest or open space properties.

PA-490 property values are recommended by the Department of Agriculture and are also revalued every five years. Ellington's revaluation schedule coincides with the PA-490 revaluation schedule.



# Town of Ellington 2025 Revaluation

84.10% of the real estate properties in Ellington are residential (single-family dwellings, two-family to four-family dwellings or residential condominiums), representing 79.34% of the total gross assessed value.

2.30% of the real estate properties in Ellington are commercial (retail, office, mixed-used), representing 7.50% of the total gross assessed value.

0.87% of the real estate properties in Ellington are industrial, representing 3.43% of the total gross assessed value.

0.32% of the real estate properties in Ellington are apartments (five units or more, with no mixed usage), representing 8.87% of the gross assessed value.

12.5% of the real estate properties in Ellington are vacant land or farm use assessments, representing 0.860% of the gross assessed value.



# Town of Ellington 2025 Revaluation

Ellington, like most municipalities uses a third-party vendor with our revaluations. The vendor is selected through a Request for Proposal, a bid process. For the October 1, 2025 revaluation, the Town of Ellington is working with Municipal Valuation Services as our revaluation vendor. Municipal Valuation Services is a Connecticut-based revaluation company.

They have completed revaluations for many other Connecticut municipalities including last year's revaluation in East Windsor.

They have also completed revaluations for Middletown, New Britain, Simsbury, Southington, Bristol, East Hartford, and many other Connecticut municipalities.

This is Municipal Valuation's first time working with the Town of Ellington.

Ellington's 2025 revaluation is not a "full, measure and list" revaluation, it is an "update" revaluation.

# Town of Ellington 2025 Revaluation

While revaluations are required every five years, the measuring and listing component, which is by far the most expensive part of the revaluation project, is required every ten years, or every-other revaluation. Ellington's 2020 revaluation was a "full, measure and list" revaluation.

Therefore, Municipal Valuation will not physically visit all the properties in Ellington. They will visit recently sold properties, however:

The Town of Ellington has a full list of Municipal Valuation's staff members who will work on Ellington's revaluation, all of whom will be credentialed.



## Town of Ellington 2025 Revaluation

One other factor in Ellington's Grand List is defective concrete, or "crumbling foundations."

Residential properties with defective concrete is eligible for reduced assessment, based on the severity of the condition. The State of Connecticut also has a captive insurance fund through CFSIC which provides funding for foundation replacements. If you believe your house may have defective concrete, please contact the Assessor's Office or visit our department's webpage, we can help you with an application for an assessment reduction.

Ellington currently has roughly 60 properties with reduced assessments due to defective concrete, and roughly 80 more that have had their foundations replaced (nearly all through CFSIC). Roughly 20 of the 80 owners whose foundations were replaced never requested an assessment reduction.

More foundations are replaced each year, and more owners come forward for a reduction each year.

# Town of Ellington 2025 Revaluation

What is happening with real estate values in Ellington before the revaluation?

Since Ellington's 2020 revaluation, residential property values have increased significantly.

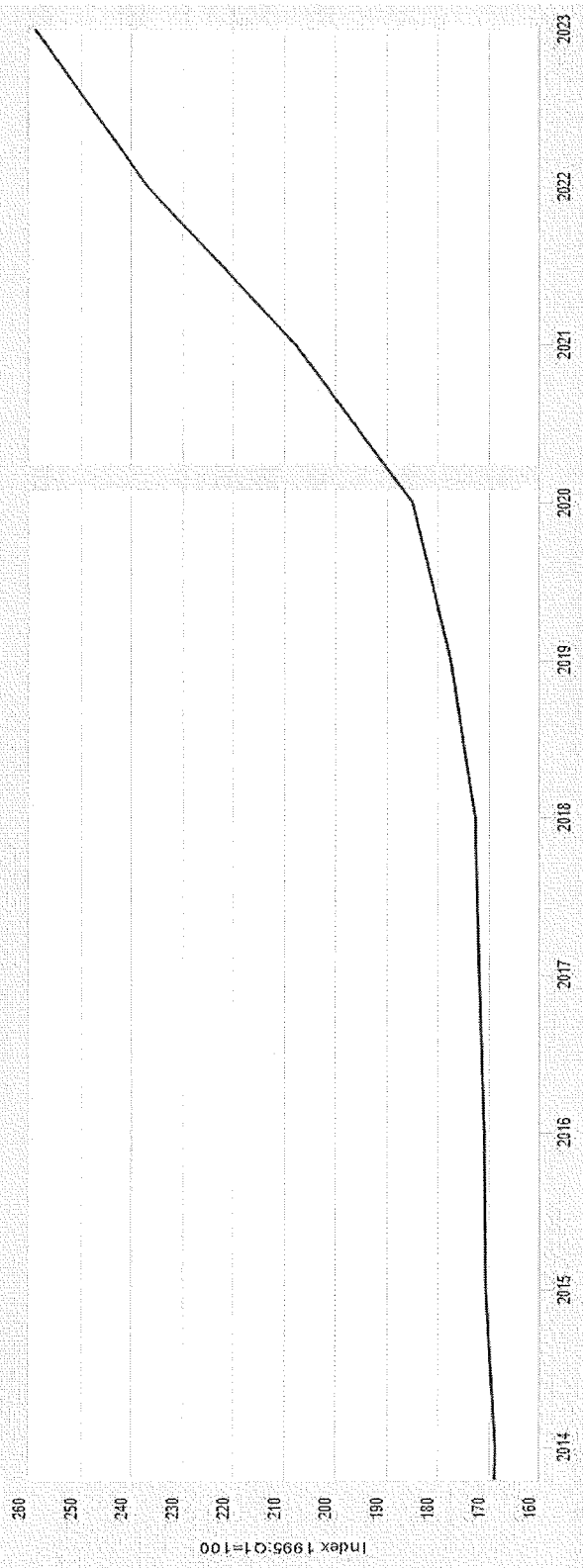
This is true in Ellington, in New England, and nationwide.

An article in *The Journal Inquirer* on July 1, 2024 showed a chart of "Average home values in Hartford metro area." For 2020, the average value was under \$240,000. For 2024, it was over \$360,000.

The chart on the next page shows the US Federal Housing Agency's "All Transactions House Price Index for the Hartford Area by year. This is grid shows the index over the 1995 base year, it does not show average values. It is mostly flat from 2014 to 2018, then increases from 2018 onward. From 2020 through 2023, it rises very steeply. These increases continued after 2023.

# Town of Ellington 2025 Revaluation

**FRED** — All-Transactions House Price Index for Hartford-East Hartford-Middletown, CT (MSA)



Shaded areas indicate U.S. recessions.

Source: U.S. Federal Housing Finance Agency

[fred.stlouisfed.org](https://fred.stlouisfed.org)

# Town of Ellington 2025 Revaluation

Actual Ellington sales data examples (we are not using actual addresses for privacy reasons):

Sale 1, Single family dwelling

General location within Ellington: North-central

Property information: 0.69 acre lot, Ranch built in 1969, 1,144 SF, 7 rooms, 3 BR, 2.5 baths; 2-car garage, enclosed porch, small shed.

Town's 100% value as of 10/1/2020: \$230,590

Sale price and sale date: \$225,000, August 2019

Resale price and sale date: \$351,000, April 2024

Percent increase (Resale over 2020 Town value): 52.22%

# Town of Ellington 2025 Revaluation

Actual Ellington sales data examples (we are not using actual addresses for privacy reasons):

Sale 2, Single family dwelling

General location within Ellington: North-central

Property information: 0.69 acre lot, Colonial built in 1973, 1,470 SF, 7 rooms, 4 BR, 2.0 baths; No garage, small shed, remodeled in 2018.

Town's 100% value as of 10/1/2020: \$217,820

Sale price and sale date: \$217,500, March 2019

Resale price and sale date: \$361,000, January 2024

Percent increase (Resale over 2020 Town value): 65.73%



# Town of Ellington 2025 Revaluation

Actual Ellington sales data examples (we are not using actual addresses for privacy reasons):

Sale 3, Condominium unit

General location within Ellington: Southwest

Property information: Townhouse condominium built in 1977, 792 SF, 3 rooms, 1 BR, 1.5 baths; No garage, partially finished basement. Land is owned in-common.

Town's 100% value as of 10/1/2020: \$110,750

Sale price and sale date: \$113,900, July 2020

Resale price and sale date: \$185,000, June 2023

Percent increase (Resale over 2020 Town value): 67.04%

# Town of Ellington 2025 Revaluation

Actual Ellington sales data examples (we are not using actual addresses for privacy reasons):

Sale 4, Single family dwelling

General location within Ellington: Southeast

Property information: 0.57 acre lot, Cape built in 1940, 1,463 SF, 6 rooms, 3 BR, 3.0 baths; No garage, partially finished basement.

Town's 100% value as of 10/1/2020: \$227,110

Sale price and sale date: \$245,000, July 2019

Resale price and sale date: \$402,000, March 2024

Percent increase (Resale over 2020 Town value): 77.01%

# Town of Ellington 2025 Revaluation

Can the Town decide not to do the 2025 revaluation? No, it is required by State Statute.

Can the Town undervalue the properties in Town in the revaluation? No, the revaluation has specific tests and ratios that must be met in the revaluation. If we deliberately undervalued properties, the reval would not meet the required test and ratio requirements.

What other options do the taxpayers have? There are several options that are potentially available to taxpayers, including exemptions, abatements, informal hearings, and appeals.

Taxpayers who are over age 65, or 100% permanently disabled, who meet the State's income requirements can sign up for the Senior Homeowner's Program between February 1<sup>st</sup> and May 15<sup>th</sup>. Participation in this program can reduce tax bills by anywhere from \$150 to \$1,250 a year.

For calendar year 2023, the maximum income (including Social Security) is \$43,800 for unmarried taxpayers, and \$53,400 for married taxpayers.

# Town of Ellington 2025 Revaluation

In 2024, the Town of Ellington adopted a new tax relief program for taxpayers over age 65. This program uses the same income guidelines as the Senior Homeowner's Program and provides a \$250 tax abatement to eligible homeowners aged 65 to 69; and a \$500 tax abatement to eligible homeowners aged 70 and older.

Additional exemption programs are available to people with disabilities.

Honorably discharged veterans who served during a period of war can also receive a veteran's exemption.

Ellington's standard veteran's exemption is \$6,000 of assessment, which is about \$216 in tax savings at the current mill rate. This exemption increases if the veteran has a disability rating.

# Town of Ellington 2025 Revaluation

Veterans who are over age 65 and eligible for the Senior Homeowner's Program can apply for the Additional Veteran's Program, which will increase the exemption amount from \$6,000 to \$17,000, which is about \$612 in tax savings at the current mill rate.

If you are an honorably discharged veteran, and you have not already done so, please record your DD-214 with the Town Clerk's Office prior to October 1<sup>st</sup>.

Active duty military can also qualify for exemptions.

If the Grand List increases by more than 50% after the revaluation, the veteran's exemptions would automatically increase.



# Town of Ellington 2025 Revaluation

When will I be notified of my new assessment after the revaluation? November 2025.

What should I do between now and then? The Town recommends that you consider what you think your house is worth before you see the Town's value from the 2025 revaluation. You can estimate the value of your house in several ways.

You may have some neighbors with similar houses who recently sold or bought a house in your area, and you can find out the sale price.

Sale prices of other similar houses can be found online. The Town of Ellington Assessor's webpage has a link to our online database, and you can look for sales information there.

This is the Assessor's department page: <https://www.ellington-ct.gov/departments-and-services/assessor>

# Town of Ellington 2025 Revaluation

The Town of Ellington's online assessment database is found here:

<https://www.propertyrecordcards.com/SearchMaster.aspx?towncode=048>

You can search for sales on that site.

You can also look for sales at realtor.com, redfin.com and other websites.

The *Hartford Courant* also publishes sales information for Ellington and many other towns in their Sunday edition every week.

If you have your own estimate of value for your house before you get your preliminary assessment notice in November 2025, you might be pleasantly surprised when you get your notice.



# Town of Ellington 2025 Revaluation

What if I feel my new value is too high when I get my notice in November 2025?

You can contact the Assessor's Office with questions. We will do our best to answer and explain.

There are three specific levels of appeals for people who feel their assessment is incorrect. It is the value of the property, not the tax amount that must be appealed.

The first level is the **INFORMAL HEARING**. This is meeting with revaluation staff from Munival. When you get your notice, you can call and set up an appointment. As the title indicates, these hearings are informal, but you should prepare for the hearing before you go. You should have an estimate of what you feel your property is worth and have some comparable sales or other data to support your position.

You do not have to go to an informal hearing, but it is the earliest opportunity to appeal your assessment and the easiest route to do so.



# Town of Ellington 2025 Revaluation

What if I attend an informal hearing and I still feel my new value is too high? Or if I missed the informal hearings?

You can appeal your new assessment to the Board of Assessment Appeals (BAA) by completing the application by February 20, 2026.

This is a more formal hearing, the property owner (appellant) is sworn-in before the hearing, and there is more of a burden for proof.

The appellant appears before the Board of Assessment Appeals, which is appointed by the Board of Selectmen. No one from the Assessor's Office is involved in the BAA hearing (unless the appellant or the BAA requests assessment staff).

The appellant should prepare written documentation to support their value estimate.



# Town of Ellington 2025 Revaluation

What if I attend a BAA hearing and I still feel my new value is too high?

After attending a BAA hearing, the appellant can file a further appeal by filing with the Superior Court within two months of the date the BAA decision notice is sent.

Remember you must appeal the value of the property, not the amount of taxes. Tax amounts will not be known until after the informal hearing and Board of Assessment Appeals hearings end.

What if I do not attend a Board of Assessment Appeals hearing or file with the Superior Court in 2026? Can I appeal the following year? Yes, you can go to BAA and Superior Court the following year, but it will not be retroactive to the 2025 Grand List.

If the BAA reduced your value, however, you must go to Superior Court within two months, you cannot go back to BAA again the following year, unless your value changed after the hearing (such as due to an addition, or improvement to the property).

# Town of Ellington 2025 Revaluation

The appeals process sounds complicated. Can I send someone in my place?

Yes, you can always have someone attend your informal hearing or BAA hearing in your place, but you must provide written authorization for that person to represent you. Statute also requires that the owner, or someone with an interest in the property, or their appointed representative must physically appear at the hearing.

Many people will send a relative, friend, appraiser or attorney to their hearing.

Most people will use an attorney when filing with Superior Court.

The assessment staff is always available to answer questions and provide information. If we are not immediately available at the time you call, stop in at Town Hall or email us, we will get back to you.



# Town of Ellington 2025 Revaluation

Remember, the best time to research the value of your property is before November 2025, so you are the most prepared for your notice when you receive it.

Thank you for attending today's workshop!

Town of Ellington Assessor's Office  
55 Main Street  
PO Box 187  
Ellington, CT 06029

860-870-3109

[jrainaldi@ellington-ct.gov](mailto:jrainaldi@ellington-ct.gov)  
[assessor@ellington-ct.gov](mailto:assessor@ellington-ct.gov)

# Ellington News & Events - February 2025



## Shop Ellington 2024 - Thank You / Raffle Winners!

This past holiday shopping season marked the fifth annual buy-local campaign. Between November 29 and December 15, 20 Ellington businesses participated in *Shop Ellington 2024*. The event is sponsored by the Economic Development Commission to promote local businesses and advertised through efforts coordinated by the Planning Department. During the campaign, patrons visited participating businesses to fill bingo squares and enter bingo cards with at least one completed row or column for a prize drawing for gift cards. This year, 20 patrons submitted 38 cards that documented 138 visits to the following participating businesses:



*Arlo Leather Goods, Backroads Smokin' BBQ, Benware Automotive, Cooley's Kitchen, Dzen Garden Market, Ellington Agway, Ellington Depot, Ellington Farmers' Market, Ellington Fine Consignments, Ellington Printery, Gold and Diamond Exchange, JRego's Gathering Place, Johnny Appleseed's, LuAnn's Bakery and Café, LuAnn's Coffee and Good Eats Drive Thru, Mercantile at Nellie McKnight Museum, Neil's Fine Wines & Liquors, The Eyeglass Place of Ellington, and Trattoria da Lepri.*

The Economic Development Commission held the raffle drawing at a public meeting on January 8, 2025, and is pleased to announce the following winners: Bruce Harding, Doug Harding, The Banks, Pat Halpin, Ann McLaughlin, Barb Gibbons, and Patricia Mary Witinok. Congratulations to all!

Thank you to each participating business, all who helped advertise the event,  
and each patron who shopped local.



**Connecticut Economic Development Association  
Invoice**

**Date**

January 10, 2025

**Due From**

Lisa Houlihan  
Town Planner  
Town of Ellington  
55 Main Street  
P.O. Box 187  
Ellington, CT 06029

RECEIVED

JAN 13 2025

TOWN OF ELLINGTON  
PLANNING DEPARTMENT

**Description**

**Amount**

2025 Individual Membership Dues – Lisa Houlihan	\$150.00
2025 Economic Development Commission Dues	\$150.00

<b>Total</b>	<b>\$300.00</b>
--------------	-----------------

**Due upon receipt. Please make check payable to CEDAS.**

**Mail payment to:**

CEDAS  
c/o  
Alison Geisler  
CCM  
545 Long Wharf Dr, 8th Floor  
New Haven, CT 06511

**Thank You!**

## PICKY PLATES

### Tacos

12

Two tacos with a side of french fries or corn on the cob. Your choice of steak, pork or chicken.

### Quesadillas

12

Two quesadillas with a side of french fries or corn on the cob. Your choice of steak, pork or chicken.

## DRINKS

### Agua Fresca

6

### Jarritos

3

### Mexican Coke

3

### Topo Chico

3



## **WE CATER!**

Our mobile food cart is what got us started- and it is perfect for your next event!

We show up with everything, you and your guests show up hungry!

Quiet and small- we do not use a generator and only require 10'x10' of flat space.

*Open Menu* option for birthday celebrations, graduation parties, weddings and more!

*Meal Deal* option for employee appreciation, student fairs, fundraisers and more!

*Drop Off* option for staff lunches, small parties, buffets and more!

Please inquire by email to [nocoस्ताqueria@gmail.com](mailto:nocoस्ताqueria@gmail.com)

# **TO-GO MENU**

860-454-0056

12 Main Street Ellington, CT

[www.nocoस्ताqueria.com](http://www.nocoस्ताqueria.com)

**OPEN TUESDAY-SATURDAY**

**11:00-8:00**

CLOSED SUNDAYS AND MONDAYS  
WE ARE A BYOB ESTABLISHMENT



@nocoस्ताqueria

## SMALL BITES

### House Salsa

5

Fire-roasted veggies blended with herbs. Served with Pan de Oro tortilla chips.

### House Guacamole

12

Chopped avocados, avocado purée, onions, cilantro, and lime. Served with Pan de Oro tortilla chips.

### Queso de Cerveza

7

Tecate cheese dip. Served with Pan de Oro tortilla chips.

### Elote

6

Roasted corn on the cob tossed in mojo sauce with cotija cheese, aleppo, and chives.

### Batatas Bravas

9

Garlic cilantro french fries. Served with kimchi ketchup and house smack sauce. (V)

### Tequila-Brined Wings

10

Oven roasted chicken wings tossed in your choice of citrus bbq sauce, tajin buffalo sauce, or taco dry rub. Served with avocado ranch.

### Rajas Quesadilla

11

Strips of creamy peppers and onions grilled with our 7-cheese blend in a 12" flour tortilla. Served with sour crema and salsa.

Add Steak \$4 | Add Pork \$3  
Add Chicken \$3

## SIGNATURE TACOS

*Tacos served à la carte. All tacos served on a 6" tortilla unless otherwise noted. Corn tortillas available upon request. (V) Vegan*

### Grande Mac

8

Grilled steak, pickle de gallo, mac sauce, 7-cheese blend, toasted sesame seeds, and shredded lettuce.

### Maui Wowie

7

Smoked chicken, caramelized pineapple, bacon jam, citrus bbq sauce, and scallion strings.

### Sancho Villa

8

Ground beef and chorizo mix, 7-cheese blend, sour crema, and shredded lettuce. Served in a crispy shell.

### River City Pulled Pork

7

Braised pork, pickled red onions, cotija cheese, cilantro, and pique.

### Drunken Fish

8

Tecate battered whitefish, shredded cabbage, avocado purée, and chives.

### Bad Mother Clucker

7

Buffalo chicken, crispy bacon bits, 7-cheese blend, avocado ranch, and our signature garnish.

### Bean Around the World

7

Black bean falafel, tajin hummus, Greek pico, and citrus vinaigrette. (V)

## STREET TACOS

6

*Tacos served à la carte. All tacos served on a 6" tortilla unless otherwise noted. Corn tortillas available upon request.*

Choice of grilled steak, pulled pork, or smoked chicken, with our signature garnish of cilantro, scallions, shallots and onions.

Add Gringo Style \$1.50 | includes 7-cheese blend, sour crema, and shredded lettuce.

## NOT TACOS

### El Chapo Chopped Salad

13

Chopped lettuce, avocado, pickled red onion, Greek pico, chili lime corn nuts, 7-cheese blend, and citrus vinaigrette.

Add Chicken \$3 | Add Falafel \$3

### Breakfast Burrito

12

Two eggs fried hard, hash browns, rajas, 7-cheese blend, and house smack sauce. Served in a 12" flour tortilla.

Add Steak \$4 | Add Pork \$3  
Add Chicken \$3

### Super Smash Burger

12

Ground beef and chorizo smash burger, grilled onions, shredded lettuce, 7-cheese blend, Grillo's pickles, and kimchi ketchup.

Add Bacon Jam \$1 | Make it a Double \$3







Approved 11/27/2025



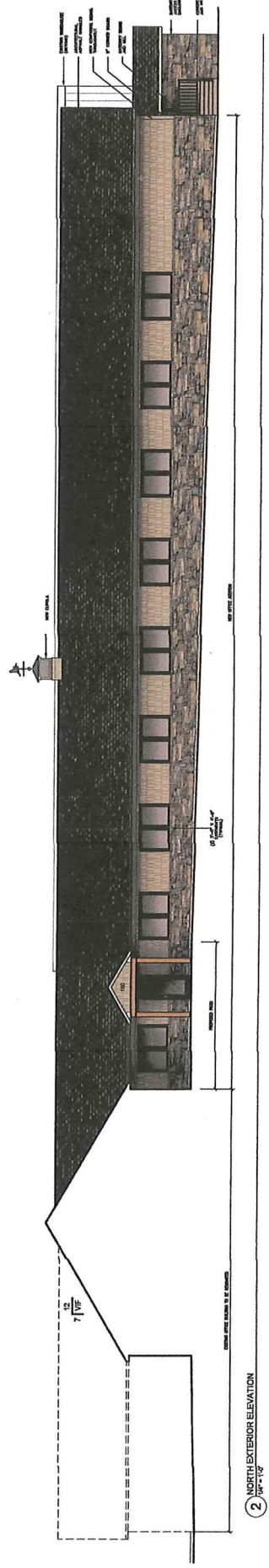
**Data Capture SOLUTIONS**  
 Data Capture Solutions  
 180 West Road, Ellington, CT 06029  
 Exterior Color Renderings



**CN AIA**  
 Cheryl Newlon  
 Architects, LLC  
 www.cherylnewlon.com



1 EAST EXTERIOR ELEVATION  
 1/8" = 1'-0"



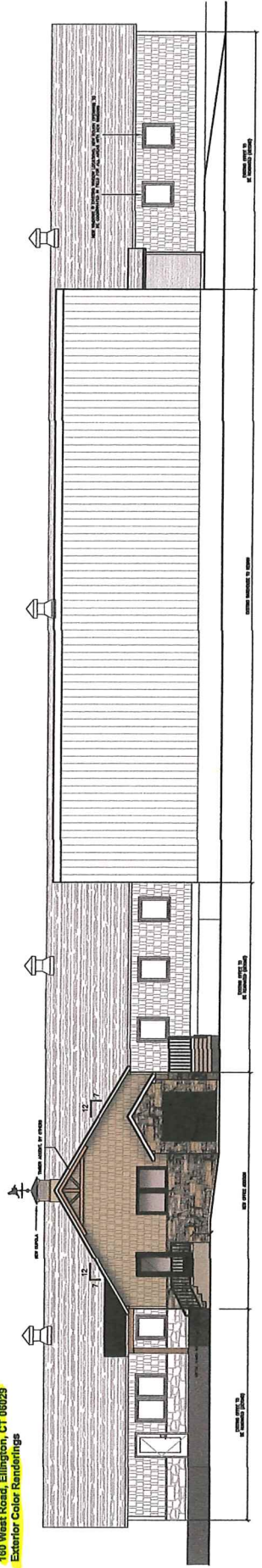
2 NORTH EXTERIOR ELEVATION  
 1/8" = 1'-0"



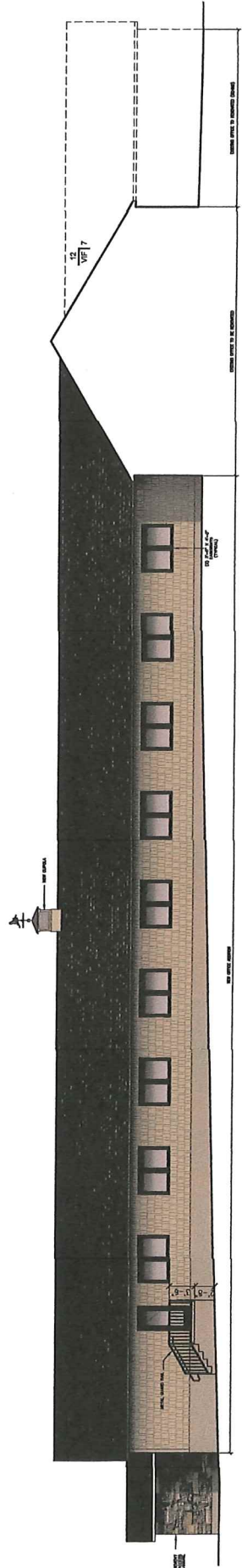
Cheryl Nowlan  
Architects LLC  
Manufacturers



Data Capture Solutions  
460 Main Street  
Enfield, CT 06029  
Exterior Color Renderings



3 WEST EXTERIOR ELEVATION  
1/8" = 1'-0"



4 SOUTH EXTERIOR ELEVATION  
1/8" = 1'-0"

Town of Ellington

General Ledger - On Demand Report

Fiscal Year: 2024-2025 From Date: 7/1/2024 To Date: 1/31/2025

Account Mask: ?????00220???????

Print accounts with zero balance

Account Type: All

Filter Encumbrance Detail by Date Range

Print Detail

Include PreEncumbrance

Account Number / Description	Budget	Range To Date	YTD	Balance	Encumbrance	% Remaining	Bud
1000.02.00220.10.50103	\$1,600.00	\$650.00	\$650.00	\$950.00	\$0.00		\$950.00
Part Time---Econ Devet Commission--						59.38%	
1000.02.00220.20.60221	\$1,000.00	\$775.00	\$775.00	\$225.00	\$0.00		\$225.00
Advertising Printing---Econ Devet Commission--						22.50%	
1000.02.00220.20.60222	\$250.00	\$450.00	\$450.00	(\$200.00)	\$0.00		(\$200.00)
Dues & Subscriptions---Econ Devet Commission--						-80.00%	
1000.02.00220.20.60223	\$0.00	\$0.00	\$0.00	\$0.00	\$0.00		\$0.00
Travel---Econ Devet Commission--						0.00%	
1000.02.00220.20.60232	\$0.00	\$0.00	\$0.00	\$0.00	\$0.00		\$0.00
Postage---Econ Devet Commission--						0.00%	
1000.02.00220.20.60233	\$0.00	\$0.00	\$0.00	\$0.00	\$0.00		\$0.00
Education---Econ Devet Commission--						0.00%	
1000.02.00220.20.60234	\$100.00	\$100.00	\$100.00	\$0.00	\$0.00		\$0.00
Professional Development---Econ Devet Commission--						0.00%	
1000.02.00220.20.60250	\$1,500.00	\$0.00	\$0.00	\$1,500.00	\$0.00		\$1,500.00
Contracted Services---Econ Devet Commission--						100.00%	
1000.02.00220.30.60341	\$0.00	\$0.00	\$0.00	\$0.00	\$0.00		\$0.00
Office Supplies---Econ Devet Commission--						0.00%	
Fund: 1000	\$4,450.00	\$1,975.00	\$1,975.00	\$2,475.00	\$0.00		\$2,475.00

Town of Ellington

General Ledger - On Demand Report

Account Mask: ??????00220???????

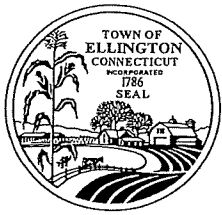
Print accounts with zero balance     
  Include Inactive Accounts     
  Filter Encumbrance Detail by Date Range     
  Print Detail     
  Include PreEncumbrance

From Date: 7/1/2024      To Date: 1/31/2025

Account Type: All     
 Budget      Range To Date      YTD      Encumbrance      % Remaining Bud     
 \$4,450.00      \$1,975.00      \$1,975.00      \$2,475.00      \$0.00      \$2,475.00

Grand Total:

End of Report



# TOWN OF ELLINGTON

55 MAIN STREET – PO BOX 187  
ELLINGTON, CONNECTICUT 06029-0187

[www.ellington-ct.gov](http://www.ellington-ct.gov)

TEL. (860) 870-3120 TOWN PLANNER'S OFFICE FAX (860) 870-3122

## ECONOMIC DEVELOPMENT COMMISSION REGULAR MEETING MINUTES

WEDNESDAY, JANUARY 8, 2025, 7:00 PM

IN-PERSON ATTENDANCE: TOWN HALL ANNEX, 57 MAIN STREET, ELLINGTON, CT

REMOTE ATTENDANCE: VIA ZOOM MEETING

**PRESENT:** In Person: Chairman Sean Kelly; Via Zoom: Vice Chairman Donna Resuttek, Regular Members Chris Todd, David Hurley, Cynthia Soto (Arrived at 7:03), and Alternate Amos Smith

**ABSENT:** Alternates Sam Chang and Michael Swanson

### STAFF

**PRESENT:** Lisa M. Houlihan, Town Planner and Ashley DuBois, Recording Clerk

III. **CALL TO ORDER:** Chairman Sean Kelly called the meeting to order at 7:00 PM.

II. **PUBLIC COMMENTS (on non-agenda items):** None

III. **ACTIVE BUSINESS:**

**BY CONSENSUS, THE ECONOMIC DEVELOPMENT COMMISSION MOVED TO ADD TO THE AGENDA DISCUSSION FOR AN AMENDMENT TO THE TAX ABATEMENT AGREEMENT FOR ELLINGTON RACQUET CLUB TO REVISE THE START DATE OF ABATEMENT. ITEM WILL BE DISCUSSED UNDER ACTIVE BUSINESS #2.**

**BY CONSENSUS, THE ECONOMIC DEVELOPMENT COMMISSION MOVED TO ADD TO THE AGENDA DISCUSSION FOR A POTENTIAL NETWORKING MEETING FOR ELLINGTON BUSINESSES. ITEM TO BE DISCUSSED UNDER ACTIVE BUSINESS #6.**

1. Discuss Shop Ellington 2024 and Conduct Raffle Drawing

Chairman Kelly started the raffle drawing by asking commissioners if they had a preference to who drew the raffle winners from the present, in-person individuals. These individuals included Chairman Kelly, Lisa Houlihan, Town Planner, and Ashley DuBois, Recording Clerk. The commissioners stated no preference, and the in-person individuals shared the honor.

Lisa Houlihan remarked the Shop Ellington 2024 event was the fifth annual campaign promoted by the Economic Development Commission and it was advertised through North Central News, Town Newsletter, social media, direct invites to businesses, The Patch, Ellington Farmers Market, and with assistance from commissioners. A thank you was shared to commissioners who signed businesses up to participate. Lisa noted there were 20 businesses that participated this year (listed below). Additionally, 20 individuals submitted bingo cards for the raffle drawing for eight \$25 prepaid gift cards. The campaign generated 152 customer visits.

The following businesses participated in this year's event:

- Arlo Leather Goods (<https://arloleathergoods.square.site>)
- Backroads BBQ - 292 Sandy Beach Rd
- Benware Automotive - 408D Somers Rd
- Cooley's Kitchen – 175 West Road, #10
- Dzen Garden Center – 187 Windsorville Rd
- Ellington Agway - 74 West Rd (Small Business Sat. 10 am-3pm & Goodies Samples)
- Ellington Depot - 1 Crystal Lake Rd
- Ellington Farmers' Market - Ellington High School -37 Maple St
- Ellington Fine Consignments - 12 Main St
- Ellington Printery - 25B West Rd
- Joe's Fine Wines & Spirits – 43 West Rd
- Johnny Appleseed's Farm Fruit Stand - 185 West Rd (Daily Raffle Prize for Shop Ellington Patrons)
- JRego's - 175 West Rd
- LuAnn's Bakery & Café - 238 Somers Rd
- LuAnn's Coffee & Good Eats - 140 West Rd
- Mercantile at Nellie McKnight Museum - 70 Main St
- Neil's Fine Wines & Liquor - 175 West Rd
- The Eyeglass Place of Ellington – 175 West Rd
- The Gold & Diamond Exchange – 8 West Rd
- Trattoria daLepri – 89 West Rd

The winners of the Shop Ellington 2024 Raffle Drawing are as follows: Bruce Harding, Doug Harding, The Banks, Banks, Pat Halpin, Ann McLaughlin, Barb Gibbons, and Patricia Mary Witinok. Congratulations to all winners.

Chairman Kelly remarked on another successful event and looks forward to the continued success in the new year. He supports the expanded timeframe allotted this past year to give people more time to support and shop local businesses, especially during the holiday season. Chairman Kelly shared a thank you to all who were involved and participated in the event.

## 2. Tax Incentive/Abatement Programs

Chairman Kelly began the discussion in regard to supporting an amendment to the Tax Abatement Agreement for the Ellington Racquet Club to modify the start date for the reduced assessment to include Grand List 2024 and then turned the floor to Lisa Houlihan.

Lisa Houlihan began by noting the history of the abatement application of the Ellington Racquet Club (ERC). On October 11, 2023, after reviewing an application from ERC, the commission recommended a tax abatement be forwarded to the Board of Selectmen (BOS). The BOS endorsed the recommendation and requested the Town Attorney draft an agreement so it would be present at the Town Meeting. There was a public hearing, and an abatement was approved on December 11, 2023. The agreement was then signed on January 24, 2024, and the Certificate of Occupancy (C.O.) was issued on October 17, 2024. In the agreement, paragraph 5 states there will be no decrease in assessment or abatement of the taxes for the Grand List October 1, 2023, or any tax list prior to C.O. Since the C.O. was issued after October 1<sup>st</sup>, which falls under the new Grand List, ERC is not eligible for abatement for 2024 and assessed in accordance with normal practices. The Town Assessor advised ERC via a letter in December that the estimated tax would be over \$50,000, first half due July 1, 2025, and second half due January 1, 2026. After conversation with various town departments, ERC sent a letter to the First Selectman/Town Administrator's Office asking that "the Town of Ellington adjust the agreement, as is allowed, to include the October 17th 2024, certificate of occupancy date for tax abatement program initiation". The matter was referred to the Town Attorney and found the town



took all the correct steps to approve the abatement. Furthermore, the policy provides the BOS the discretion to adjust the terms of the agreement, such as the timing of the reduced assessment period. Since the Economic Development Commission's role is to determine eligibility, the Town Attorney recommended the Commission reviews it first and if so inclined to support an abatement revision send a positive referral to the BOS.

Chairman Kelly noted the issue is the Certificate of Occupancy was issued 17 days after October 1st, which is when the abatement would have needed to be effective. Chairman Kelly noted support for recommending the BOS revise the abatement start date.

Alternate Smith clarified the ERC did not have their C.O. until October 17<sup>th</sup> and Lisa confirmed.

Vice Chairman Resutek asked for confirmation the Town Attorney reviewed this request and the policy and did not find any reason the date couldn't be changed. Lisa confirmed and stated there is nothing within the statute that defines when a town must establish the agreement or when it must be effective. It was found that the town policy sets the timeline and the BOS has the discretion to make that change.

Vice Chairman Resutek responded what the recommended change of date would be, and Chairman Kelly responded and stated they will not recommend a specific date but amend the agreement to revise the start date under their discretion.

MOVED (SMITH), SECONDED (HURLEY) AND PASSED UNANIMOUSLY TO AMEND THE TAX ABATEMENT AGREEMENT FOR ELLINGTON RACQUET CLUB TO REVISE THE START DATE OF ABATEMENT; THE START DATE WILL BE DETERMINED BY THE BOARD OF SELECTMEN.

3. Report: Tolland County Chamber of Commerce  
Chairman Kelly reported no new updates.
4. Agricultural Initiatives  
Chairman Kelly reported no new updates.
5. CEDAS Best Practices – Monthly Customer Service Satisfaction Survey Results  
Chairman Kelly reported no new updates.
6. Report: Current Economic Activity

Chairman Kelly opened the newly added agenda item and stated Lisa Houlihan was approached by the First Selectman Lori Spielman, who has been approached by a few local business owners, about hosting a networking meeting for community business owners. Chairman Kelly noted the Commission has worked to arrange such events in previous years with limited success and posed the question of revisiting the concept to the Commission.

Regular Member Hurley responded in support due to the requests to the First Selectman.

Lisa Houlihan added the interest of two local businesses and followed up with the First Selectman to gather more information and background. The First Selectman remarked in previous years there were very informal gatherings among business owners and meetings went at its own pace. Upon further discussion, these gatherings were for business owners to meet each other and find out how they could help each other's business, discuss processes or issues they may have occurred; more of a discussion forum than a structured meeting. Lisa asked the Commission if they have encountered conversations with interest for this type of event.

Alternate Smith responded that a type of gathering or opportunity for the businesses in the community to meet with elected officials and department heads could have strong potential.

Chairman Kelly supported this idea. Vice Chairman Resutek also shared support of the idea and the larger concept could be more successful. Regular Member Todd noted the efforts in past years were not highly successful. Regular Member Todd remarked on past conversations with businesses about whether they joined the Tolland County Chamber of Commerce and lacked positive responses. Regular Member Todd explained this organization is explicitly designed to support these networking conversations, questions, and topics, but instead business owners reach out to the First Selectman for intown attention instead of getting involved in the larger community. Regular Member Todd supported the idea however and agreed involving town representatives.

Alternate Smith commented if this type of gathering could be hosted at a business or restaurant in town that's large enough to accommodate the community, then it provides an opportunity for those businesses to potentially gain interest and clientele. However, if the gathering was hosted in a neutral setting, then the question of funding is uncertain.

Regular Member Todd asked Lisa Houlihan if the Commission can use their funding to host an event/s at a local restaurant with a rotation schedule. Lisa responded that it would be up for policy review to see if feasible.

Chairman Kelly noted one possible reason this concept hasn't been successful in previous attempts is that it has been too broad, one type of business owner may not have any common goals or interests as another. One idea proposed by the Chairman is to host a specific industry for an event, for example the food industry, who have common interests in the community and so on.

Regular Member Todd then posed the question of whether the commission goal is to support specific businesses or all businesses. Regular Member Todd's understanding of the proposed topic aligns more with global issues about business in Ellington and economic policy in Ellington as a whole.

Regular Member Hurley responded in support of connecting all local businesses together regardless of industry, to provide the platform for businesses to potentially gain customers and relationships through other business owners. Alternate Smith noted support of Regular Member Hurley's idea and additionally noted the framing of invitation and marketing approach would be key. In addition, Alternate Smith remarked on the potential that the town could advance a conversation among businesspeople without a chamber but among the community itself. In summary, Alternate Smith reiterated the point of this type of event is connecting business owners and policy makers together could prove fruitful.

Lisa Houlihan responded to the group's discussion with support for their ideas, however, past failed efforts remained prevalent. Vice Chairman Resutek then suggested a type of interest poll or survey sent to business owners to gauge actual interest in this concept. Chairman Kelly supported this idea and noted the marketing would be key, to include the First Selectman in conjunction with the Economic Development Commission, to find a level of interest that is worth pursuing. Vice Chairman Resutek and Alternate Smith supported the idea of a survey. Regular Member Hurley commented on the nature of the Ellington close-knit community, how most businesses already know each other, there are limited new introductions to go around.

Chairman Kelly and Alternate Smith each commented on the potential success for a survey, endorsed or partnered with the First Selectman's office, to gather interest on a potential networking event. Both individuals noted the inclusion of department heads or policy makers could support a higher success rate. Lisa Houlihan ended the discussion and committed to discussing ideas with the First Selectman.

Vice Chairman Resutek asked what is developing across from Meadowview Plaza. Chairman Kelly responded that there is a pending application to the Planning and Zoning Board for new businesses to develop through a three-phase plan. Lisa shared a concept plan and site plan with the commission. Round table discussion ensued.

Regular Member Hurley asked if there is any other new economic activity. Lisa Houlihan answered that the previous night's Design Review Board meeting reviewed an application from Data Capture to expand and remodel their building. Lisa then shared the remodeling plan with the commission. Round table discussion ensued.

Lisa lastly noted the new restaurant, NoCoast Mexican Restaurant, will hopefully open soon. Round table discussion ensued.

#### **IV. ADMINISTRATIVE BUSINESS:**

1. Fiscal Year 2024-2025 Budget & Expenditures Update.

Chairman Kelly reported no new updates.

2. Approval of November 13, 2024, Regular Meeting Minutes.

**MOVED (HURLEY) SECONDED (SMITH) AND PASSED UNANIMOUSLY TO APPROVE THE NOVEMBER 13, 2024, REGULAR MEETING MINUTES AS WRITTEN.**

3. Correspondence/Discussion:

Chairman Kelly reported no new updates.

#### **V. ADJOURNMENT:**

**MOVED (RESUTEK) SECONDED (SMITH) AND PASSED UNANIMOUSLY TO ADJOURN THE ECONOMIC DEVELOPMENT COMMISSION MEETING AT 7:59 PM.**

Respectfully submitted,

---

Ashley Dubois, Recording Clerk

**From:** Natalie Rosenbaum <nrosenbaum@advanect.org>  
**Sent:** Tuesday, February 4, 2025 6:18 PM  
**Subject:** Town Profiles Data Request  
**Attachments:** 2025 Town Profiles Key Employer List--DRAFT.pdf

CAUTION: This email originated from outside of the organization. Do not click links or open attachments unless you recognize the sender and know the content is safe.

Dear Municipal Partners,

AdvanceCT, in partnership with the Connecticut Data Collaborative, is updating our Town Profiles and we need five minutes of your time!

The Town Profiles are designed to be a tool for business attraction and economic development, as well as a resource for government grant applications, annual reports, and other policy efforts. **With nearly 20,000 page views a year**, this is one of the most frequently visited pages of our website! The current Town Profiles can be viewed here: [Town Profiles \(advancedct.org\)](https://www.advancedct.org/town-profiles).

One of the most popular pieces of data in the Town Profiles is the list of five “key” employers or institutions. The Key Employers list gives towns the opportunity to shine the spotlight on high-profile companies that reflect their character and growth trajectory and highlight their most notable companies and institutions.

Attached is the most recent “key employers” list. **We ask you to review the key employers listed for your municipality, and email Natalie at the address below if you would like to make any updates for 2025.** As comprehensive business data is very difficult to track, we rely on your local insight to ensure our key employers list is current.

If there is another person to contact regarding this data for your municipality, please forward this request to the appropriate party, and let us know so we can keep our contact list updated.


**Please submit any changes by end of day on February 28, 2025.** If you have questions, please contact Natalie Rosenbaum at 860-571-7137 or [nrosenbaum@advanect.org](mailto:nrosenbaum@advanect.org).


On behalf of AdvanceCT and the Connecticut Data Collaborative, thank you for your assistance.

Sincerely,


Rachel Gretencord  
Vice President, Research


Natalie Rosenbaum  
Executive Administrative Assistant

 [860-571-7137](tel:860-571-7137)

 [nrosenbaum@advanect.org](mailto:nrosenbaum@advanect.org)

**ADVANCECT**  
CONNECTICUT

 [FOLLOW US ON LINKEDIN](#)

LEARN MORE ABOUT ADVANCECT 

Town Profiles  
Key Employer List

TOWN	KEY EMPLOYER 1	KEY EMPLOYER 2	KEY EMPLOYER 3	KEY EMPLOYER 4	KEY EMPLOYER 5
Andover	Network Inc.	Scott Electrocrafts	Andover Elementary School	Benjamin Franklin Plumbing, Inc.	MTM Corporation
Ansonia	Farel Corporation	Birmingham Group Health Services	HMP Industries Inc	NPI/Medical	American Precision
Ashford	Toolmax	Webster-Boy Scouts Reservation	Hole In The Wall Camp	Ptin Products	North Veterinary Clinic
Avon	Orion Americas	Rogers Corp	OFS Specialty Photonics	Legere Group Ltd	I Devices
Barkhamsted	Air Industries	Digitorgi Roofing & Siding	Lombard Ford Inc	Tru Hitch Inc	Old Riverton Inn
Beacon Falls	NEJ Inc	Comcast	Goldenrod	O&G Industries	Ansonia Steel
Berlin	Eversource	Mason Onofrio Public Relations	Assa Abloy	TOMZ Corporation	Keep Me Home
Bethany	Laticrete International	Duracell Inc	Albers Foundation	Woodhaven Country Club Inc	B & B Transportation
Bethel	Connecticut Light & Power Co	Woodhall School	Steiner & Associated Businesses	Cedar-Bethel LLC	Target Corporation
Bloomfield	Regional School District 14	Kaman	HomeGoods Distribution Center	Newport Academy	True Value
Bolton	Cigna	Munson's Candy Kitchen	Bolton Veterinary Hospital	WorldClass Distribution (Trader Joe's)	Seabury
Bolton	Simoniz Usa Inc	Hillandale Farms Conn Llc	Argus Merchant Gases LLC	Able Coil & Electronics	Country Carpenters
Bozrah	Blakeslee Prestress Inc	Allied Universal	John D Thompson Hospice Inst	United Parcel Services (UPS)	Service Station Equipment
Bridgeport	Tretz Corp	Bridgewater Village Store	Visiting Nurse Services of CT	Blakeslee Arpaia Chapman Inc.	Brantford Gun Club
Bridgeport	Sunny Meadow Farm	Bristol Health	TLG Service Inc	Prime Resources	MW Life Sciences
Bridgeport	ESPN Inc.	Greenfield Global	Amazon	Maywood Estates	Wainscot Solutions Inc
Bridgewater	Branson World Headquarters	Pierce Memorial Baptist Home	Phonotech	Arthur G. Russell Co.	Bauer Aerospace
Brookfield	Walmart	Resident Mfg Operating Co	Learning Clinic	ROMTECH	Eastern Account Systems, Inc.
Brooklyn	Supreme Forest Products Inc	Hamilton Book Sellers	Burlington Academy Of Learning	McDonald's	Dunkin' Donuts
Burlington	Sand Road Animal Hospital	Better Val U Supermarket	Housatonic Valley Regional High School	Dunkin' Donuts	Cadence Education Learning Center LLC
Canaan (Falls Village)	Canterbury Board of Education and the Town	Good Root	Hart's Greenhouse & Florist	Ed's Garage	Lee H. Kellogg Elementary School
Canterbury	FAVARH	H & S Vacuum & Janitorial Supply	Zionick's Garage LLC	Cherry Brook Health Center	Rawson Materials
Canton	Orlando Excavations Inc	Whole Foods North East	Macy's Logistics & Operations	Carelot Childrens Center Inc	Cas-Kel Manufacturing
Chaplin	Bozzuto's Inc	Roto-Frank of America, Inc	Masonicare at Chester Village	Collins Aerospace	Dunkin Donuts
Cheshire	Whelen Engineering	Clinton Crossing Premium Outlets	Bausch Advanced Technology Group	Chapco, Inc. LLC	Hanwha Aerospace USA
Chester	CT Water Company	Caring Community	Incor	Clinton Country Club	YMCA Camp Hazen
Clinton	S&S Arts And Crafts Factory	Northwestern CT Sportsman	YMCA Camp Jewell	Carefree Building Co	Stop and Shop Supermarket
Colechester	Nature's Classroom	Hawk Integrated Plastics	Columbia Ford	New Beginnings Farm	Alpha Q
Colebrook	Columbia Manufacturing	Metal Working Technology	Northeast Builders	Wile Motors	Colebrook Store
Columbia	Mohawk Mountain Ski Area	Teleflex Medical	Walgreens	National Iron Bank	Eastcom
Cornwall	Town of Coventry	Stefop & Shop Supermarket	Walmart	Sabrina Pools	Cornwall Electric
Coventry	Adelbrook Behavioral & Development Service	Boehringer-Ingelheim Pharmaceuticals	Danbury School System	IQVIA Holdings - Data Processing	Dunkin Donuts
Cromwell	Nuvance Health	Woodway Contry Club	GBR Systems Corp	Adam's Super Food Stores	Covenant Village
Danbury	Town of Darien	SWPC Plastics	Birmingham Health Center	Whalley Glass General	GKN Aerospace Services
Darien	Griffin Hospital	IDA International	Barnes Aerospace	Nuffren/Coherent	Western CT State University
Deep River	Torrison Lawn and Garden	Perma Treat Corp	Barnes Aerospace	Goodspeed Opera House Foundation	Zoto's International
Derby	RSCC Wire & Cable LLC	MB Aerospace	Goodspeed Opera House Foundation	Goodwin University	Camtech Inc
Durham	New England Propeller	Chestelm Health & Rehab Center	Eversource	Regalcare At New Haven	Lowes Home Improvement
East Granby	American Distilling/Dickinson Brands	Pratt & Whitney	Goodwin University	Mariner Health of Bridgebrook	Hobson Motzer Inc
East Haddam	East Haven Builders Supply	East Lyme Aquatic & Fitness Center	Regalcare At New Haven	Suominen	Joining Technologies, Inc.
East Lyme	Southern Auto Sales Inc	Paradigm Precision	Buell's Orchard	Easton Country Day School	Franklin Academy
East Windsor	Paradigm Precision	Oakridge Dairy	Dymotek	PTR - Precision Technologies	Cobalt Healthcare and Rehabilitation Center
Eastford	Oakridge Dairy	Eppendorf Inc.	Tower Laboratories	Sacred Heart University	Coca-Cola Beverages Northeast
Ellington	Lee Company	Bigelow Tea	Sacred Heart University	ConnectiCare	Town Fair Tire
Essex	Bigelow Tea	UConn Health Center	Norwich Orthopedic Partners	L & L Mechanical LLC	Birk Manufacturing
Fairfield	UConn Health Center	D W Transport & Leasing	Litchfield Equities	Arrow Concrete Products Inc	Hanwha Aerospace USA
Farmington	Healthtrax Inc	Torrington Country Club	Arrow Concrete Products Inc	AQR Capital Management	Aquarion
Franklin	Meadow Brook Nursing Home	Cecil Brothers Inc	American Industries	Pfizer Global R&D	Barn Yard/Great Country Garages
Glastonbury	United Children and Family Service Medical F	General Dynamics Electric Boat	Moroso Performance Products	The Riverhouse Banquet	Paramount Commons at Enfield LLC
Goshen	Yale-New Haven Shoreline Med	GCI Outdoors	Genesis Health Care & Rehabilitation Center	Rosst Sawmill	Essex Savings Bank
Granby	Arden House	EastCONN	The Hartford	Prudential Connecticut Realty	RBC-Heim Bearings
Greenwich	Hartford Hospital	Hartland School	Wilderess School	Topcoder Inc	The Jackson Laboratory for Genomic Medicine
Griswold	Hartford Hospital	Hartland School	Wilderess School	State Line	Salmon Brook Nursing & Rehab
Groton	Hartford Hospital	Hartland School	Wilderess School	Bimbo Bakeries USA	Fay & Wright Excavating Inc.
Guilford	Hartford Hospital	Hartland School	Wilderess School	East Coast Auto	Interactive Brokers
Haddam	Hartford Hospital	Hartland School	Wilderess School	Rea Magnet Wire Co	South East Agency
Hamden	Hartford Hospital	Hartland School	Wilderess School	Target Custom Mfg	Medtronic Inc
Hamden	Hartford Hospital	Hartland School	Wilderess School	Woodhill Farm	American Cruise Lines
Hartford	Hartford Hospital	Hartland School	Wilderess School	Woodhill Farm	Saybrook At Haddam
Hartford	Hartford Hospital	Hartland School	Wilderess School	Woodhill Farm	AAA Hamden
Hartford	Hartford Hospital	Hartland School	Wilderess School	Woodhill Farm	Donahue Construction
Hartford	Hartford Hospital	Hartland School	Wilderess School	Woodhill Farm	Travelers
Hartford	Hartford Hospital	Hartland School	Wilderess School	Woodhill Farm	Greenwoods Tree Farm LLC

TOWN	KEY EMPLOYER 1	KEY EMPLOYER 2	KEY EMPLOYER 3	KEY EMPLOYER 4	KEY EMPLOYER 5
Harwinton	O&G Industries	Region 10	Eastside Electric	Fairview Farm Golf Course	Terminix
Hebron	Colebrook Village at Hebron	Country Carpenters	Blackledge Country Club	Ted's IGA Supermarket	Savy & Sons
Kent	St Josephs Episcopal Chapel	Kent Greenhouse & Gardens	Marvelwood School	Hebron Lions Agricultural Society, Inc.	Crew Design Inc
Killingly	Frito Lay, Inc.	Staples Distribution	Punam Plastics	United Natural Foods, Inc.	Spirol International Corporation
Lebanon	Regional School District 17	Interstate Battery	True Value	The Kinningworth Kid's Center	LaForesta
Leydard	Prides Corner Farms	The Scotts Company	Town of Lebanon	Hanandale Farms	Graywall Farms
Lisbon	Foxwoods Resort Casino	Prides Corner Farms Inc.	Job Lot Plaza	Village Market	CVS
Litchfield	Home Depot	Walmart Supercenter	Target	Lowe'S Home Improvement	Wheelabrator Lisbon, Inc.
Lyme	Edavance	Reynolds Marine	Forman School	Cramer & Anderson LLP	United Construction & Engineering
Madison	VNA Community Healthcare	Clarity Software Solutions	Madison Beach Hotel	Headlyme Country Store	H P Broom Housewright
Manchester	Manchester Memorial Hospital/TECHN	ACMT Aerospace	Pursuit Aerospace	Camp Laurelwood	Grove School
Mansfield	University Of Connecticut	Natchaug Hospital	Mountain Dairy	FLEX Manufacturing	Allied Printing
Marlborough	Diversified Corp	Schneider Electric Motion Usa	Marlborough Plastic Inc	AVS Bio	Mansfield Center For Nursing & Rehab
Meriden	Midstate Medical Center	Carabetta Management	Hunters Ambulance	MPS Plastics Inc	Big Y
Middlebury	Chemtura Corp	Timex Group Usa Inc	Quassy Amusement Park	3M Purification Inc	Ris Cable
Middletown	Zygo Corp	Powder Ridge Ski Area	Lyman Orchards	Winchester Electronics Corp	Berlin Packaging
Milford	Pratt & Whitney	Fedex Ground	Middlesex Health	Emerson (Cooper-Alkins Corp.)	Rogers Manufacturing Company
Monroe	Victorinox Swiss Army	Milford Hospital	Schick-Wilkinson Sword	Connecticut Valley Hospital	Community Health Center
Montville	Mohegan Tribal Gaming Authority	Biometrics NLE, LLC	Sippin Energy Products	Subway World Headquarters	Doctors Associates Inc
Morris	I2 Systems Inc	Home Depot	Stop & Shop	Church Hill Classics LTD	Production Metals
Naugatuck	ION Bank	James Morris School	Camp Washington	Montville Board of Education	Rand-Whitney Container Board
New Britain	Hospital of Central Connecticut (HoCC)	Central Connecticut State University	Glendale Center	American Backplace	Bantam Sheet Metal
New Canaan	Wavely Lifecare Network	Central Connecticut State University (CCSU)	Stanley Black & Decker	Polamer Precision	Rich's Foods
New Fairfield	St Jacques Contracting	Laidlaw Transit Inc	Country Club of New Canaan	New Canaan Country School	Hobbs Inc
New Haven	Regal Rexnord (formerly Altra Motion)	Perry Technology	Ami Solutions	New Fairfield Press Inc	architectural Panel Sysys LLC
New London	Hospital of North Haven Health	Yale University	Home Depot	Knights of Columbus	Ski Sundown
New Milford	General Dynamics Electric Boat Corporation	Yale New Haven Health/L+M Hospital	U.S. Coast Guard Academy	Connecticut College	Sheffield Pharmaceuticals
Newington	Kimberly Clark	Candlewood Valley Health & Rehab	Neeltran Inc	New Milford Hospital - Wctn	Edelman Leather LLC
Newtown	Hanford Healthcare	Data Wall Inc	PCX Aerostructures	Beacon Hospitals	Raytheon Technologies
Newtown	Curtis Packaging	Sonics	Arch Medical Solutions	Newtown Savings Bank	Kimball Midwest
Norfolk	New England Miniature Ball Co	Botelle School	Infinity Hall	Norfolk Country Club	Consolini & Tonan Landscaping
North Branford	Honeywell	Town of North Branford	Shoreline Life Care LLC	Big Y	Tilton CT
North Canaan (Canaan)	Stop & Shop	Lindell & Son Inc.	Great Falls Brewery Company	United Ag & Turf	Huzler Manufacturing Co. Inc.
North Haven	Amazon	Meditronic	Connecticut Container Corp	Isopor Fluid Technologies Inc	O F Mossberg & Sons Inc.
North Stonington	AZ Corporation	A Thyme To Cook Inc.	American Kuhne	Xerox	EMCOR Group
Norwalk	Faciset Research Systemism Inc.	Datto	Booking Holdings	Bob's Discount Furniture	Dynamic Building-Energy Solutions
Norwich	William W. Backus Hospital	The American Group (American Ambulance)	Norwich Free Academy	Black Hall Outfitters	City of Norwich (including Norwich Public Utilities)
Old Saybrook	Kellogg Marine Supply	Sennheiser Electronics Corp	Florence Griswold Museum	Ilerrum Therapeutics	Old Lyme Country Club Inc.
Orange	Saybrook Point Inn	Sound Manufacturing Inc.	From You Flowers	Bigelow Tea	Telyon
Oxford	Pez Candy Inc	Yale University - West Campus	Avangrid Inc	BST Systems Inc	Aurora Food Products, LLC
Plainfield	RBC Bearings Inc	PTA, Plastics	Griswold LLC	Gem Sensors	Fermalor
Plainville	Brookwood Laminating Inc	Lowe's Distribution	Manafort Bros	Phoenix Products	New England Metal Building Pro LLC
Plymouth	Wheeler Clinic	Plainville Board of Education	Laurelano Sign Group	Pomifret School	Madelcraft Co.
Pomfret	The Nutmeg Spice Company	Richards Corporation	Hull Forest Products	Jarvis Airfoil	Rectory School
Portland	Loos & Co Inc	Fiberoptic Technology	Airex Rubber Products Corp	Piela Electric Inc	Standard Knapp
Preston	Birdon	Olivers Supermarket	Awnings of Eastern Connecticut	Holiday Hill	B & B Transportation
Prospect	Swift Innovations LLC	Sheldon Precision LLC	Slaples	ERW, Inc	Foam Plastics-New England Inc
Punnam	GIL Foundation Inc	Foster Corporation	Third Door Media	Nazzaro Inc	Impact Plastics
Redding	Day Kimball Healthcare	Gold Line Connector Inc	Genesis Technology Solutions	ARBURG Inc.	Georgetown Financial Group Inc
Ridgefield	Redding Country Club	West World Media	PDQ Aerospace	Riverbank Farm	Silver Spring Country Club
Rocky Hill	Boehringer-Ingelheim	MTU Aero Engines North America	Lord Tree Experts	Burnetts Country Gardens	CT Pharmaceutical Solutions
Roxbury	Henkel Corp	Johnsons Masonry & Landscaping	Sids Auto	ITW Deltar Seat Components	Maple Bank Farm
Salem	Roxbury Veterinary Clinic	Burnetts Landscaping	Mohagan State Forest	Raf Electronic Hardware	R&W Heating Energy Solutions LLC
Salisbury	Concrete Express Inc	Noble Horizons	Microboard Processing Inc	Salisbury Bank & Trust Co	Salisbury School
Scotland	Hotchkiss School	Scotland Hardwoods	Altrina Healthcare	Pitney Bowes Inc	Thule Group
Seymour	Savino Transportation Inc	Connecticut Basement Systems	Prudential Financial	River Oaks-Sherman Golf Club	Sharon Country Club
Sharon	Maron Utility LLC	Morgan Stanley Wealth Management	Mclean	Ensign-Bickford Industries Inc	Hubbell Inc
Shelton	Vassar Health Connecticut	BIC Corp	Grower Direct Farms	Geisslers Supermarket	Beatty Construction
Sherman	Nasdaq	Sherman Appliance Repair	New England Mechanical	Target Department Store	Chubb Insurance
Simsbury	Vanishing Point Education LLC	Hartford Investment Financial Services			Sony's Place
Somers	Hartford Life Insurance Co	New England Tractor Trailer			The May Company (Macy's)
South Windsor	Mt Ford Industries Inc	Broadridge (formerly DST Output)			

Town Profiles  
Key Employer List

TOWN	KEY EMPLOYER 1	KEY EMPLOYER 2	KEY EMPLOYER 3	KEY EMPLOYER 4	KEY EMPLOYER 5
Southbury	IBM	CL&P	Southbury Green	Southbury Plaza	FirstLight CT
Southington	Yards Metals Inc	Smiths Medical	MI Southington Ski Area	Connecticut On-Line Computer	Pepsi-Cola of Bristol
Sprague	Amagraph Packaging Inc	Sayles School	Jaypro	Mattern Construction, Inc.	Faile Precision Machining
Stafford	Johnson Memorial Hospital	TTM Technologies Inc	3M Co	Athens	American Sleeve Bearing LLC
Stamford	Stamford Health	NBC Sports Group	Gartner	Deloitte	Charter Communications
Sterling	Sterling Community School	Westmark Imprintables Inc	Sea Research Foundation (Mystic Aquarium)	Maxam Initiation Systems	Dubois Chemicals
Stonington	Davis Standard LLC	Mystic Seaport	Ascrock Industries	General Dynamics/Electric Boad - Eagle Park	Zachry Nuclear Engineering
Stratford	Sikorsky, A. Lockheed Martin Company	Two Roads Brewing Company	State of CT - Prison	Nuovo Pasia	Kubec
Suffield	HP Hood	The Suffield Academy	Unimetal	The Suffield House - Nursing Home	Kongsburg Automotive
Thomaston	Sigan	Stewart EF1	Numa Tool	Summit Corp	Whyco
Thompson	Ivanhoe Tool & Die Company	Nutmeg Container (a Unicorr company)	CNC Software Inc	Asplundh Construction Corp	First Student Inc
Tolland	Nerac Inc	Gerber Scientific	Vita Health Care Inc	Prudential Americana Group	Valerie Manor
Torrington	Charlote Hungerford Hospital	White Flower Farm Inc	Image First Healthcare Laundry	Unilever	Cooper Surgical
Trumbull	Lockheed Martin/Helicopter Company	Henkel Corporation	Traveler Restaurant	Campers Inn RV of Union	Chappel Tire Services
Union	N E Timberland Investments LLC	Joseph Gnazzo Co., Inc	Fox Hill Nursing & Rehab	Rein's Delicatessen	Swiss Cleaners
Vernon	ECHN Medical Group	Vernon Manor	Charles River Laboratories	Kieffer Kettle Korn	Pachaug Animal Hospital
Voluntown	Voluntown Board of Education	Bronson's Pool and Hardware	Gaylord Hospital	Ulbrich Stainless Steels & Specialty Metals, Inc.	BYK USA
Wallingford	Town of Wallingford (includes BOE)	Masonicare	Hopkins Vinyard	Siddal Heating & Cooling	Warren General Store
Warren	Abor Services of CT Inc.	Hopkins Inn	Mayflower Inn & Spa	Rumsey Hall School	Washington Supply Company
Washington	The Gurnery School	The Glenholme School	Waterbury Hospital	Webster Bank	Post University
Waterbury	St. Mary's Hospital	McDermid Inc.	Eugene O'Neill Theater	Seacom Fabrication LLC	Crystal Rock
Waterford	Dominion Energy	Sonalytis	Super Stop & Shop	Emerson Automated Solutions	University of Saint Joseph
Watertown	Siemon Company	Shelter Logic	Triumph Engine Control Systems	DORO Restaurant Group	Elm City Livery
West Hartford	Legrand, North America/Wiremold Company	CLA (Clifton/Larson/Allen)	University Of New Haven	IPC Systems	SHM Pilots Point LLC
West Haven	VA Medical Center-West Haven	Watson Inc	Lily's Weston Market	Ed Mitchell Inc.	Fairfield County Bank
Westbrook	The Lee Company	Water's Edge Resort & Spa	Connecticut Business Systems	National Health Care	Home Goods
Weston	Weston Board of Education	Aspetuck Valley Country Club	Travel Centers of America	Willington Pizza	Becker Construction
Westport	Bridgewater Associates	Town of Westport Public Schools/Governme	AIG	Belersdorf Inc	Muehlstein
Wethersfield	CT Department of Labor	Loves Travel Centers of Amercia	Electric Motion	Northwestern CT Community College	DRT Power Systems
Willington	Fedex	Howmet Corporation	SS&C Technologies	Dollar Tree	Eversource
Wilton	ASML US INC	Physician Group	Ahlstrom Nonwovens LLC	Bombardier Aerospace	NU Cap US
Windham	Arconic Power & Propulsion	Walgreens	Wolcott Municipal Employees	Devon Percision Industries	Bailey Moore Glazer Schaefer
Windsor	Eastern Connecticut State University	All American Heating and Plumbing	Jewish Community Center	Advantage Cleaning LLC	WOW! Chevrolet of Woodbury
Windsor Locks	Amazon	Good Hill Mechanical Services	New Morning Market	Labonnes Supermarket	Hyde School
Wolcott	UTC Aerospace Systems	Rogers Corp	Northeast Placement Svc	Linemaster Switch Corp	
Woodbridge	Wolcott Education System				
Woodbury	Plastic Forming Co Inc				
Woodstock	Scott Swimming Pools Inc				
	Linemaster Switch Corp				