

State of Kindergarten

March 2022



- ✓ Provide a history of Kindergarten in our district
- ✓ Discuss achievement data on students from half day and full day cohorts
- ✓ Share K readiness data and the impact it has on outcomes
- ✓ Review Kindergarten readiness efforts in the community
- ✓ Look at how we are getting our schools Kindergarten ready

Katie Cox, Director of Early Learner Initiatives

Kindergarten in U-46

PAL Project Accelerated Literacy 1993-2005

*Half Day intervention program, Kindergarten in the AM, Literacy Based Intervention in the PM targeting students with significant need on literacy assessments.

*Offered in all district Title One Schools

Full Day Kindergarten Intervention 2006-2016

*Title One students screened and selected based on low letter Identification and concepts of print scores

*18 students in a classroom, play based, literacy development focus

*Parents committed to attending 3 parent education evening sessions, fall home visits for each family and two parent conferences a year.

Universal Full Day, Play Based Kindergarten in all Elementary Schools 2016-2017

*U-46 Kindergarten Framework developed collaboratively and implemented

*All teachers and administrators attended summer institute

*KIDS assessment implemented

Kindergarten Cohort Achievement Data

Average Winter NWEA MAP Scores from the 2 last years of Half Day and first 2 years of Full Day				
	Half Day K Cohort 2013-2014	Full Day K Cohort 2015-2016	Half Day K Cohort 2014-2015	Full Day K Cohort 2016-2017
Reading - Grade 2	176	176	175	176
Grade 3	189	190	187	187
Math - Grade 2	180	181	179	180
Grade 3	194	195	192	191

Are we ready?



KIDS is an observational tool designed to help teachers, administrators, families, and policymakers better understand the developmental readiness of children entering kindergarten. KIDS is aligned to the Illinois Early Learning and Development Standards (IELDS) and Illinois Early Learning Standards–Kindergarten (IELS-K). IELDS are the state's expectations for children's learning and development at kindergarten entry. IELS-K are the state's expectations for children's learning and development at the end of kindergarten.

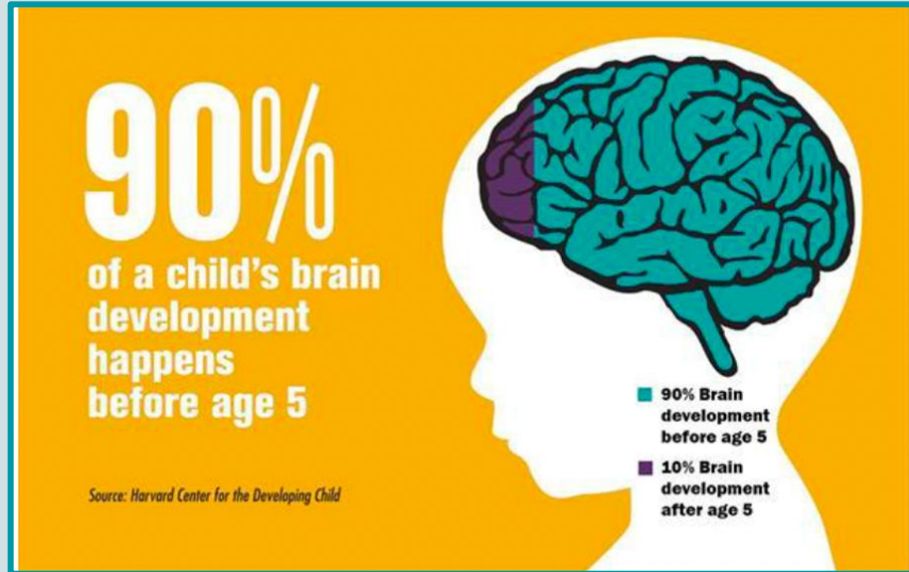
KIDS is not intended to be used for: school accountability, teacher evaluation or student placement decisions.

U-46 Kindergarten Readiness 2019 Data

	% of Kindergartners Demonstrating Readiness by Developmental Area						
Geography	In 0 Developmental Areas	In 1 Developmental Area	In 2 Developmental Areas	In All 3 Developmental Areas	Social and Emotional Development	Language and Literacy Development	Math
Statewide	37%	17%	18%	29%	56%	47%	35%
SD U-46	50%	18%	17%	15%	42%	31%	24%

	% of Kindergartners Demonstrating Readiness by Race in all 3 Developmental Areas						
Geography	% of Asian Kindergartners who were rated Ready in All 3 Developmental Areas	% of Black Kindergartners who were rated Ready in All 3 Developmental Areas	% of Hispanic Kindergartners who were rated Ready in All 3 Developmental Areas	% of Multiracial Kindergartners who were rated Ready in All 3 Developmental Areas	% of Native American Kindergartners who were rated Ready in All 3 Developmental Areas	% of Pacific Islander Kindergartners who were rated Ready in All 3 Developmental Areas	% of White Kindergartners who were rated Ready in All 3 Developmental Areas
Statewide	35%	23%	17%	31%	15%	37%	35%
SD U-46	28%	15%	7%	19%	9%	46%	26%

Importance of Early Learning Experiences



Early Learners in U-46

Children Birth to Five: **18,365** in 11 Communities

- White/Non-Hispanic 31%
- Hispanic 51%
- Black 5%
- Asian 6%
- American Indian .06%
- Multi-Racial 4%



Federal Poverty Level for a Family of Four in 2018:

	50%	100%	185%	200%	400%
Income for family of 4	\$23, 220	\$25,100	\$46, 435	\$50,200	92, 880
# Children, 0-5, in U-46	1,079	2,817	5,869	6,561	13,600

Publicly Funded Preschool Slots



Eligible Infants

& Toddlers:

2,637

With
Slots
290

Without
Slots 2,347

Slot Gap

**Eligible
Preschoolers:**

2,868

With Slots
1,451

Without
Slots 1,417

Slot Gap

Note: eligible children are children living under 185% of the Federal Poverty Level (\$48,470 for a family of four).

Child Care Options in U-46



2020: 5,756 Children in care settings, resulting in over 12,000 children at home with a family member or neighbor.

Full Pay & Child Care Assistance (CCAP)

- 49 Licensed Child Care Centers
 - 25% Gold, 10% Silver, 2% Bronze
- 52 Licensed Family Care Providers
 - 2% Gold, 0% Silver, 0% Bronze

*Child Care Assistance Funding serves working families earning up to 200% FPL

Strategies to Increase Readiness Across our Communities



- Planning to increase opportunities for preschool in the district across elementary schools

- Increase home visiting for our birth to three families

- Continued partnership with Elgin Partnership for Early Learning focused on increasing access to high quality early learning and increasing opportunities in non-traditional settings across the U-46 communities

 - *Learning on the Go Summer Programming

 - *Literacy in the Laundromats

 - *Getting Ready for Kindergarten Calendars

- Continued partnership with Alignment Collaborative for Education focused on supporting and developing our local early learning workforce to serve ALL of our kids

Getting our Schools Ready for our Early Learners



Early Learning Audit 2021-2022

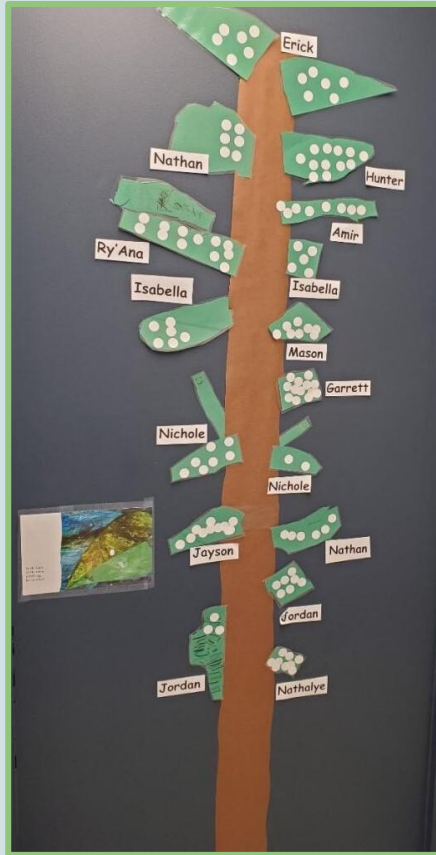
National P-3 Center, University of Colorado, Denver

- Examine how district is organized to support high-quality early learner efforts (P-3)
- Variability of implementation efforts across district

Revised Kindergarten transition process and plan for increased support for students transitioning to Kindergarten from the district preschool programs and newcomers to the district.

Rising Kindergarten Summer School Program to support student success in their transition to kindergarten.

Proposal for a social emotional framework to support all early learners, The Pyramid Model.



*Young children are
not a distraction
from more
important work.*

*They are the most
important work.*

-C.S. Lewis