

KANSAS CITY  
PUBLIC SCHOOLS



# District Advisory Committee (DAC) Meeting

January 22, 2025, 6:00pm



# **Brittany Foley**

## DAC Chair

Welcome and Introductions



# Agenda

## Welcome and Introductions

Brittany Foley, DAC Executive Board Chair

## DAC Delegate Testimonials (3 minutes each)

LMS, LCPA, FLA

## Presentations

Derald Davis – Reaffirming Our Commitment to Equity

Monica Curls, Joshua Jackaway – KCPS Board of Directors

Steve Gatland – Hazel Health

Amaia Cook – REACH

Chon Walters, Ashton Ibarra – Child Nutrition Services

Nicole Collier White – Update: GO Bond

## DAC Engagement

Building a Strong Parent-Led Organization

Calls to Action: Preparation for March Meeting

**Closing Remarks**

**Delegate Raffle**

**Adjourn Meeting**



# DAC Testimonials

Please keep to 3 minutes.

Lincoln Middle

LCPA

Foreign Language Academy





# **Dr. Derald Davis Victor Aguilar**



# Reaffirming Our Commitment to Our Students

**Dr. Derald Davis**  
**Deputy Superintendent**



# 0.0

*Policy Category: Overarching*

*Policy Name: KCPS Equity Policy*

**0.0** The Kansas City Public Schools Board of Education affirms in our actions that each student in our school system can, will and shall learn, and that it is the responsibility of the school district to provide each student the necessary supports to achieve his or her highest potential.

Educational equity is the intentional allocation of resources, instruction, and opportunities according to need. We recognize that based on factors including but not limited to race, ethnicity, disability, gender identity, national origin, language and socio-economic status, students may be deprived of equitable educational opportunities.

It is the commitment of the KCPS Board to foster a barrier-free environment where all students have equitable access to an excellent education within our schools. To achieve

**Policy JFGA: INTERVIEWS WITH OR REMOVAL OF STUDENTS**

**Status:** ADOPTED

**Original Adopted Date:** 06/06/2023 | **Last Reviewed Date:** 06/06/2023

## **Purpose**

The purpose of this policy is to set rules for entities other than district employees who request to interview students at school. This policy does not apply to the day-to-day conversations between students and district employees. Such conversations will be conducted in accordance with board policy governing communications between students and staff, board policy governing parent and family involvement, and state and federal law.

## **School Resource Officers (SROs)**

An SRO's role in interviewing students or taking students into custody will be addressed in the agreement between the district and the law enforcement agency commissioning the SRO.

## **Crimes Committed on District Property or at District Activities**

If a student is suspected of committing a crime on district property or at a district activity, school officials will contact law enforcement as required by law and board policy. School officials will also contact the student's parent/guardian. District staff will interview the student as part of the misconduct investigation and student discipline process, but law enforcement will not be allowed to interview the student except as described below.



# KNOW YOUR RIGHTS

---



Advocates for  
Immigrant  
Rights and  
Reconciliation

[www.airrkc.org](http://www.airrkc.org)



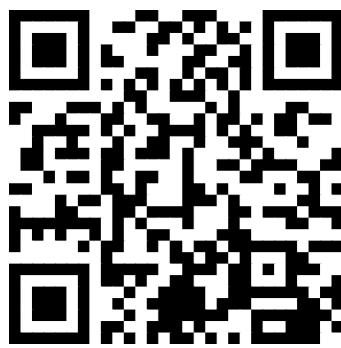


# **Monica Curls**

# **Joshua Jackaway**

## KCPS Board of Directors

# ADVOCACY DAY



Sign up by January 28

<https://tinyurl.com/kcpsadvocacy25>

Contact Keith Smith – [ksmith5@kcpublicschools.org](mailto:ksmith5@kcpublicschools.org)

## MAKE YOUR VOICE HEARD!

JOIN KANSAS CITY PUBLIC SCHOOLS AS WE TRAVEL TO THE MISSOURI STATE CAPITOL.

**FEBRUARY 4, 2025**  
**JEFFERSON CITY, MO**

During our visit, we will meet with state legislators to discuss issues important to public education.

KCPS will provide bus transportation to Jefferson City the morning of February 4, 2025. We will return back to Kansas City by late afternoon.





# Steve Gatland

Hazel Health



 Hazel Health



# All children deserve to be seen, heard, and cared for

An overview of the Hazel Health  
partnership with KCPS

January 2025



# Did you know ...

All KCPS students can have  
“telehealth” visits with doctors  
and therapists ... at no cost to  
families

# Why?

**When students feel better they  
do better**

# And ...

**When they don't feel well, it can be a real challenge getting them into a doctor or counselor**



**Hazel Health is a  
telehealth service just  
for students**

# Hazel Health ...



Accessible to  
all students

Regardless of insurance  
status, immigration  
status, or ability to pay

Hazel Health bills insurance for Hazel services. This ensures that the visit cost is covered by insurance, and there are no out-of-pocket costs for the family.

✓ HIPAA compliant

✓ FERPA compliant



Teletherapy



Telehealth



At Home



At School

# What can we help treat in partnership with school nurses?

Hazel Health supports school nurses – and help get students back in the classroom.

Minor Injuries

Rashes

Heartburn

Cold or Flu Symptoms

Menstrual Cramps

Cough

Allergies

Headaches

Stomach Aches

# What do we work on in therapy?

The goal of therapy is to help kids feel less alone in their emotions and feelings – and to equip them with skills and tools to solve problems on their own.

Build self-esteem

Develop coping skills

Build resilience

Regulate emotions

Manage time & attention

Increase social confidence

Improve academic performance

Cope with grief or trauma

Form healthy friendships

Communicate effectively

Increase self-awareness

Tools to manage stress

Build confidence

Enhance self-control

Build family connection

Boost problem-solving

Learn healthy self-talk

# Our care team

Our network of Missouri-licensed professionals who specialize in the unique needs of your students.

50%

of our providers identify as Black, Indigenous, Persons of Color (BIPOC)

40%

of our providers are bilingual, speaking 30+ languages in total



**Traci Muramoto**  
*Licensed Marriage and Family Therapist*



**Olivia Centuori**  
*Licensed Clinical Social Worker*



**Janethia Buckley**  
*Licensed Professional Counselor*



**Lizbeth Cortez Sosa**  
*Licensed Clinical Social Worker*



**Jean-Colt Belizaire**  
*PhD, Licensed Mental Health Counselor*



**Stephanie Gonzalez**  
*Licensed Mental Health Counselor*



**Ashley Usita**  
*Licensed Mental Health Counselor*



**Colin Pryor**  
*Licensed Clinical Social Worker*



**Analee Phang**  
*Licensed Marriage and Family Therapist*



**Greg Osberg**  
*Licensed Clinical Social Worker*



**Cindy Dorestant**  
*Licensed Marriage and Family Therapist*



**Norma Kawata**  
*Licensed Mental Health Counselor*

# Students that use this service ...

Miss less school

Get into less  
“trouble”

Don't have to leave  
school to see a  
doctor

Are better able to  
manage their  
emotions

Are less depressed,  
less anxious and  
feel better  
mentally

Are better able to  
be successful

**Parent consent is required. Learn more ...**

**<https://getstarted.hazel.co/district/kcpublicschools>**



**1-800-76-HAZEL**

# Q&A



KANSAS CITY  
PUBLIC SCHOOLS



# Amaia Cook

REACH



# **REACH Presentation**

---

**Responding with Empathetic Alternatives and  
Community Health**



---

# About Decarcerate KC

## Our Mission

Decarcerate KC aims to raise awareness, build power, and create change around issues of incarceration and policing in Kansas City. We are a multiracial, multigenerational organization that centers those impacted by incarceration and policing in order to end the reliance on incarceration and policing, and build a safer Kansas City for all.

# Reimagining Safety

What does safety look like to you?

Have you ever been in a crisis in which your needs were not met? What happened in that situation?

What are some instances where you had to call 911/gotten 911 called on you and there could have been alternatives?



# What is REACH?

REACH was created in response to community groups and council members who collaborated to secure funding and create an ordinance for a pre-arrest diversion program. It is modeled after the Law Enforcement Assisted Diversion (LEAD) initiative.

---

REACH, or Responding with Empathetic Alternatives & Community Health, is a compassionate public health initiative aimed at addressing non-violent crime.

---

REACH aims to offer assistance and support individuals in accessing necessary resources.

---

REACH is a city program housed in the Health Department.

---

The program aims to divert individuals with unmet behavioral health needs or those experiencing poverty away from the criminal legal system and into a system of care focused.

---

---

# Referral Pathways

Pre-arrest diversion: An alternative to arrest for non-violent crimes, connecting individuals to services instead of involving the justice system.

Social contact referral: Proactive referrals by police officers for individuals who haven't committed a crime but could benefit from REACH.

Community referral: Direct referrals from the community to REACH responders, bypassing police involvement by calling 311, 988, 211, or REACH directly.

---

# REACH Scope

The REACH program is designed to assist residents who are facing challenges with substance use, mental health issues, and extreme poverty without involving the criminal justice system.

Rather than addressing these hardships and issues as crime, REACH's goal is to offer individuals the support they need to improve their lives

REACH services will be available to individuals on Prospect Ave. from 27th to 45th Street and select KCATA areas.

# How to Use Reach

You see someone who needs support but don't want to call the police, you can call REACH at 816-513-6010 or call 311 to get connected.

A REACH staff will meet you where you are or at the CAN Center (3025 Prospect) between the hours of 10:00am - 6:00pm.

REACH will assist with connecting folks to agencies to meet immediate and long-term needs.



# How to Use Reach (cont.)

- REACH sends two people/REACH Responders to help you or the person in need of care.
- REACH staff will help connect you to local services that can assist with your immediate needs. If you need a ride, they can take you. If you need long-term help, they might refer you to long-term care navigation.
- If REACH is full and can't help with long-term care, they'll explain and ask if you would like a follow-up. If you say yes, they'll keep your contact info for follow-up when they have space. They will also write down everything about the encounter, like your needs and what services were offered.
- A REACH Community Navigator will tell other agencies about the needs you need and what services you've been referred to.

---

# Boundaries and Schedule

REACH referrals will be accepted  
Tuesday through Friday from 11  
a.m. to 8 p.m. and Saturday from  
2 p.m. to 12 a.m.

---

# How to Reach

## Out for Help

If you, or someone you encounter, is at risk of arrest, 18 or older, and is experiencing homelessness and has an unmet mental health or physical needs, please call REACH at 816-513- 6010 or call 311 and ask for REACH.

### Example for when to call REACH:

You are with your friend at the grocery store and they shoplift food. The store manager knows you and knows that you and your friend have unmet needs. Store manager can call REACH instead of involving KCPD.

You and your friend slept overnight in the back of the parking lot of a small business. The business owner arrives in the the morning and calls 911, but when KCPD arrives you request

---

**Thank You**

**Questions?**

---

KANSAS CITY  
PUBLIC SCHOOLS



# **Chon Walters Ashton Ibarra**

Child Nutrition Services





# Child Nutrition Services

---

Chon Walters, Director  
Ashton Ibarra, Assistant Director

**We get the  
privilege to  
nourish the heart  
of Kansas City's  
youth!**

---



# Child Nutrition Services



---

- Community Eligibility Program
- Service 34 schools within our Kansas City Public School District
- Serve approximately 11,000 of 14,000+ students daily
- Breakfast, Lunch, Supper, Pre-K Snack





# Our Focus

---

Nourishing our student population to  
enhance their academic experience at  
KCPS

# Child Nutrition Services

---

- Meal service includes wide range of entrée choices from classics like cereal, muffins, breakfast pizza, cheeseburgers, chicken sandwiches, pizza, spaghetti and meat sauce, and nachos to name a few as well as tangerine chicken, chicken egg rolls, tamales, chicken and waffles, Philly cheesesteaks, etc.
- Colorful selection of fresh fruits and vegetables for the students daily.
- Low fat non-flavored and flavored milk options and whole grain products.



# **Student Engagement**

---

Serving up a great day from the kitchen to  
the classroom!

# Field Day

---

Lunch was served to elementary students on a frisbee that they could utilize for field day activities, keep, and take home!



# Domino's Day

---

KCPS Child Nutrition Services partners with Domino's throughout the school year to offer their smart slice pizza as an entrée option.





# Sampling Days

---

KCPS Child Nutrition Services offers sampling to students to receive feedback on new menu items.

Our student feedback is valued and very important in designing our menu selections.

# Opening Day

---

On opening day of major league baseball this school year, we will be serving lunch in plastic KCPS baseball caps each student can keep!





KCPS Child Nutrition Services partners with outside public community figures to join our students for lunch on special occasions.

Kansas City Police Chief, Stacey Graves joined our Northeast Middle students for Holiday Lunch prior to fall break.

# Community Engagement

---



# Child Nutrition Services

---

Our goal is to not only nourish our KCPS students but empower them to build a healthy plate in order to make healthy choices and live a healthy lifestyle.



# Thank you

---

Chon Walters, Director

816-418-7011

[cwalters@kcpublicschools.org](mailto:cwalters@kcpublicschools.org)

<https://www.kcpublicschools.org/about/departments/child-nutrition>



# Nicole Collier-White

GO Bond



# Building the Blueprint: A Bond for Kansas City Public Schools

January 23, 2025



# Building the Blueprint

On April 8, 2025, the KCPS community will consider a **\$474 Million GO Bond** that would fund critical facility improvements for KCPS (\$424M) and 9 charter schools (\$50M).

- Academie Lafayette
- Citizens of the World
- Crossroads Academy
- DeLaSalle
- Gordan Parks
- Hogan Prep
- Kansas City Girls Prep Academy
- Kansas City International Academy (KCIA)
- Scuola Vita Nuova (SVN)

## Did you know?



# 1967

last time voters approved  
a KCPS bond issue



KCPS is the only Missouri  
school district in this region

*without  
voter-approved  
bond funding*

# April 2025 GO Bond Facts

Cost for the average District homeowner:

***Less than \$0.64/day*** to address  
***\$474 Million*** of critical school facility  
needs and improve learning environments.

64 cents/day for homes valued at \$200,000.  
Average home value in KCPS boundaries is \$180,000.



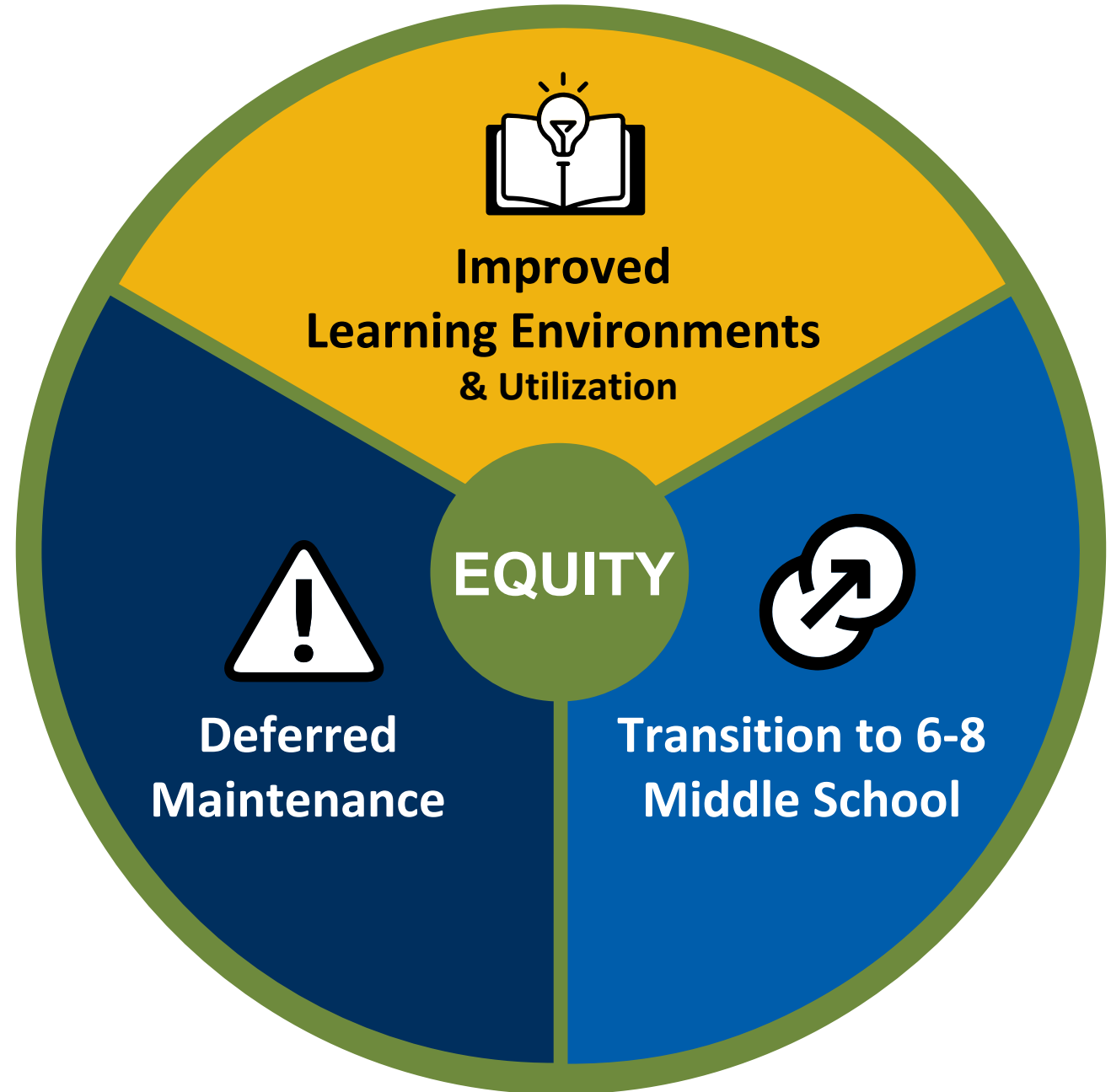
***Passage of an April GO Bond  
in Missouri requires support  
from **four** of every **seven**  
voters (57.14%).***

# What's in the Bond Plan?

# KCPS Project Priorities

The Bond Plan will address deferred maintenance, improves learning environments, and transitions to 6-8<sup>th</sup> grade middle schools through a strategic combination of:

- *renovations*
- *new construction*
- *relocations and co-locations*





# Without dedicated funding for facility improvements...

**\$1.25B**  
*in unfunded needs*

**\$650M +**  
*in unfunded building repairs*



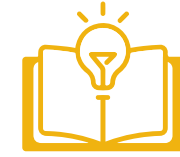
Deferred  
Maintenance

**\$600M +**  
needed to improve  
*teaching and learning*  
environments  
(Educational Suitability-ESA)



Improved Learning  
Environments

# Investment Strategies



Improved Learning  
Environments



Deferred  
Maintenance

## Districtwide Investment

Renovations to improve building condition and learning environments that have a marginal or lower condition score on facility assessments.

.....  
20 school sites ... \$109M

## Targeted Investment

Higher level of investment through new construction and major renovations, including co-locations and relocations.

.....  
12 school sites ... \$365M

**\$270M Savings**

**Eliminates the facility costs of 7 aging facilities that come off-line.**

# What's Next

# Engagement Timeline and Tasks

<b>January 2025: Engagement Launch</b>	<b>February 2025: Midpoint Engagement</b>	<b><i>March 2025: Final Push</i></b>
<ul style="list-style-type: none"><li>• Direct Mail Round 1</li><li>• Paid Digital Campaign</li><li>• Ambassador Trainings</li><li>• Public Endorsements</li><li>• School Saturday Information</li></ul>	<ul style="list-style-type: none"><li>• Direct Mail Round 2</li><li>• Paid Digital Campaign</li><li>• Social Media Push</li><li>• Voter Registration</li><li>• Parent Outreach</li><li>• Bus Tour</li></ul>	<ul style="list-style-type: none"><li>• Direct Mail Round 3</li><li>• Paid Digital Campaign</li><li>• Social Media Push</li><li>• Staff Push</li><li>• Bus Tour</li></ul>

# Help Spread the Word!

☑ **Training Sessions:** Organize comprehensive training sessions to ensure ambassadors are well-informed about the bond details and its benefits.

- January 29th @ noon (Virtual)
- February 6 @ 5pm (Manual Tech)

Sign up for  
training here!



☑ **Community Meetings and Bus Tours:** Attend community meetings and bus tours to educate residents about the bond.

☑ **Informational Materials:** Provide community stakeholders with brochures, flyers, and other materials to distribute during their outreach efforts.

☑ **Social Media Campaigns:** Use social media to share information about the bond, providing them with pre-made posts and graphics.

Learn more at  
[www.kcpublicschools.org/bond](http://www.kcpublicschools.org/bond)  
[bond@kcpublicschools.org](mailto:bond@kcpublicschools.org)

Sign-up to become a Community  
Ambassador for the GO Bond





# Thank You

Meeting recording and presentation slides will be available next week at:

[www.kcpublicschools.org/dac](http://www.kcpublicschools.org/dac)