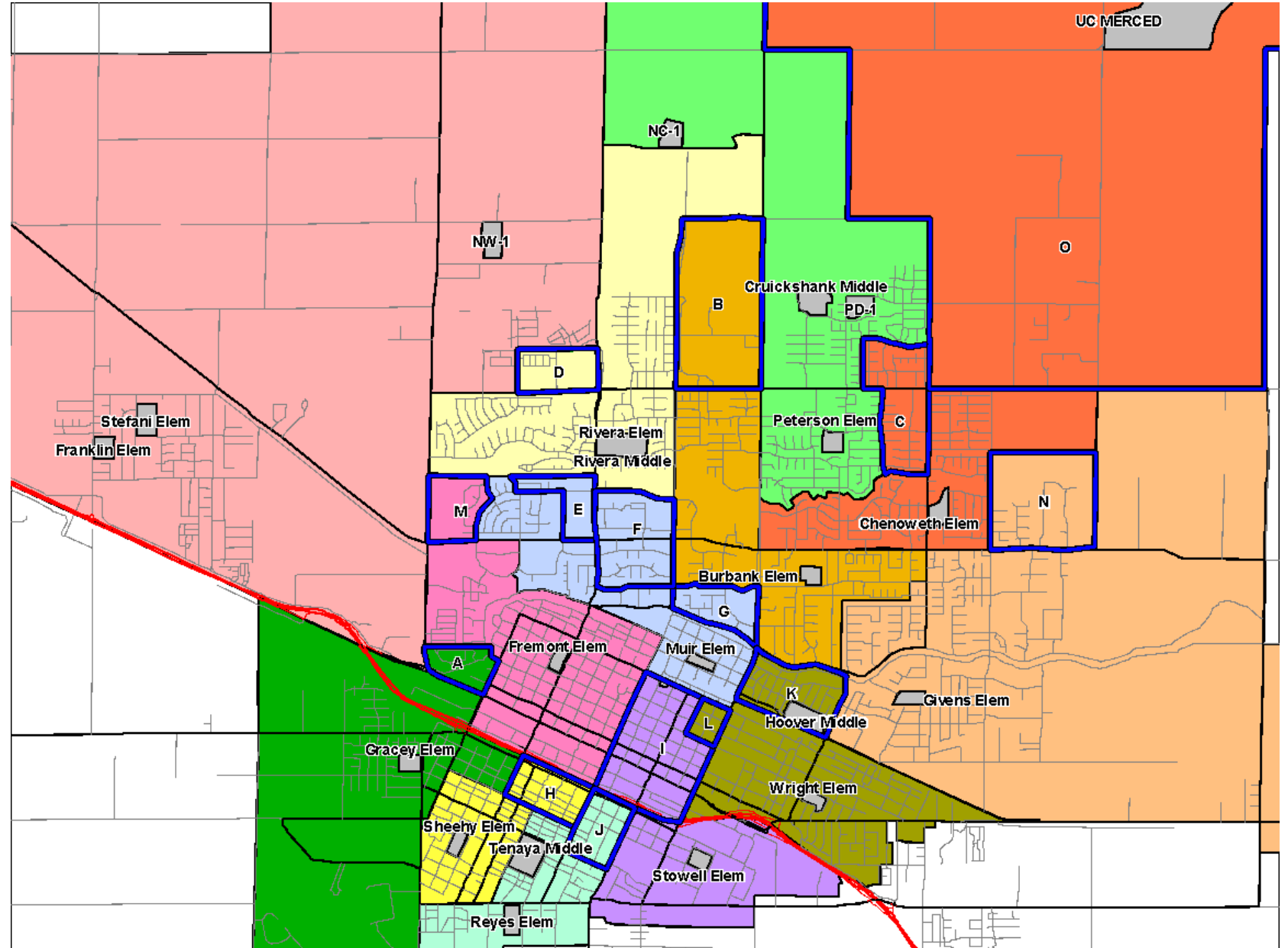




# BLUE MAP

## TK-6 Student Impacts

- Area A: 75 from Fremont to Gracey
- Area B: 66 from Rivera to Burbank
- Area C: 105 from Peterson to Chenoweth
- Area D: 41 from Franklin/Stefani to Rivera
- Area E: 75 from Rivera to Muir
- Area F: 56 from Burbank to Muir
- Area G: 52 from Burbank to Muir
- Area H: 85 from Gracey to Sheehy
- Area I: 126 from Muir to Stowell
- Area J: 117 from Stowell to Reyes
- Area K: 65 from Givens to Wright
- Area L: 29 from Muir to Wright
- Area M: 59 from Muir to Fremont
- Area N: 88 from Chenoweth to Givens
- Area O: 9 from Givens to Chenoweth





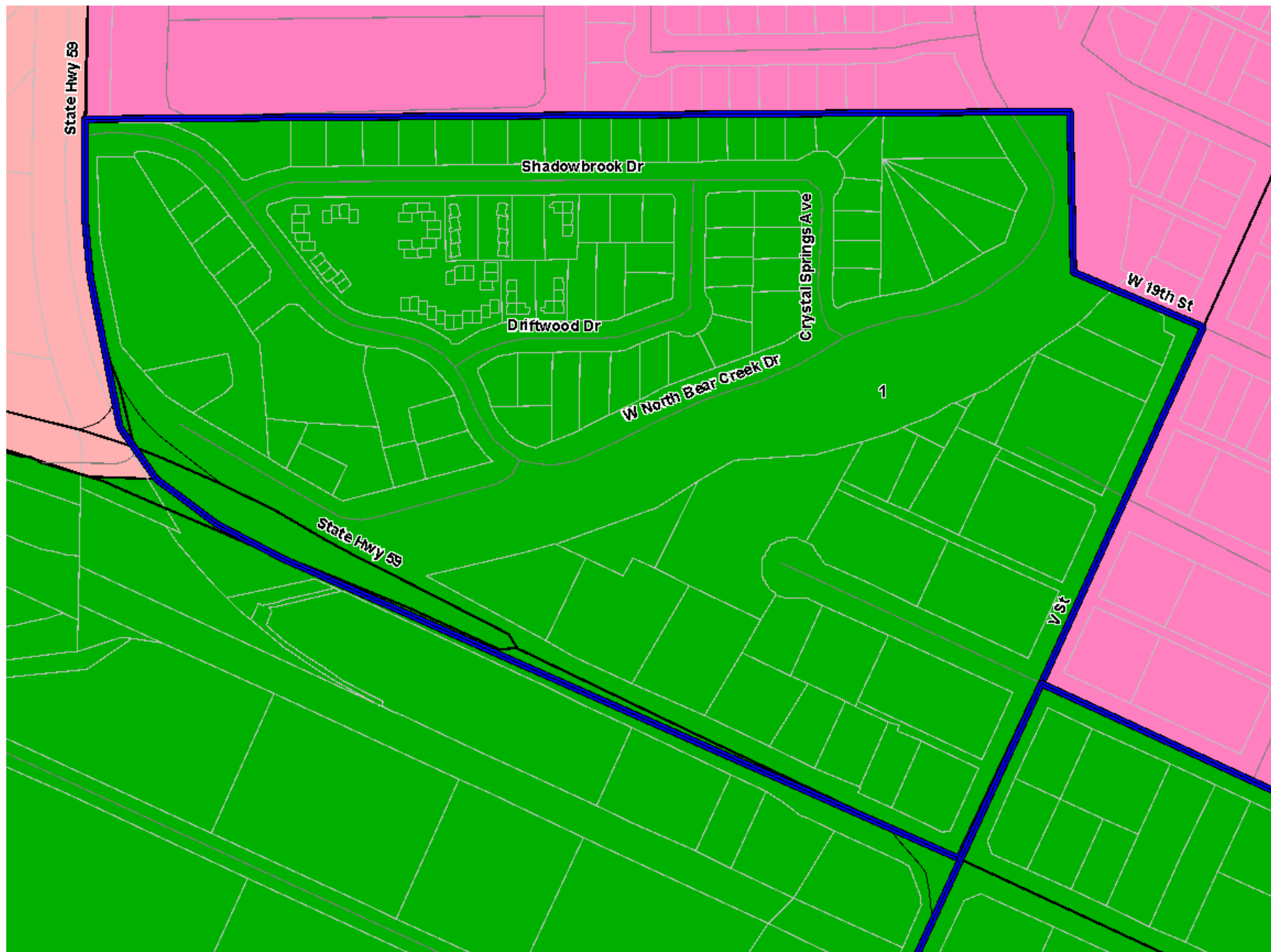
## BLUE MAP

### Elementary Area A

Current:  
Fremont

Proposed:  
Gracey

75 Students





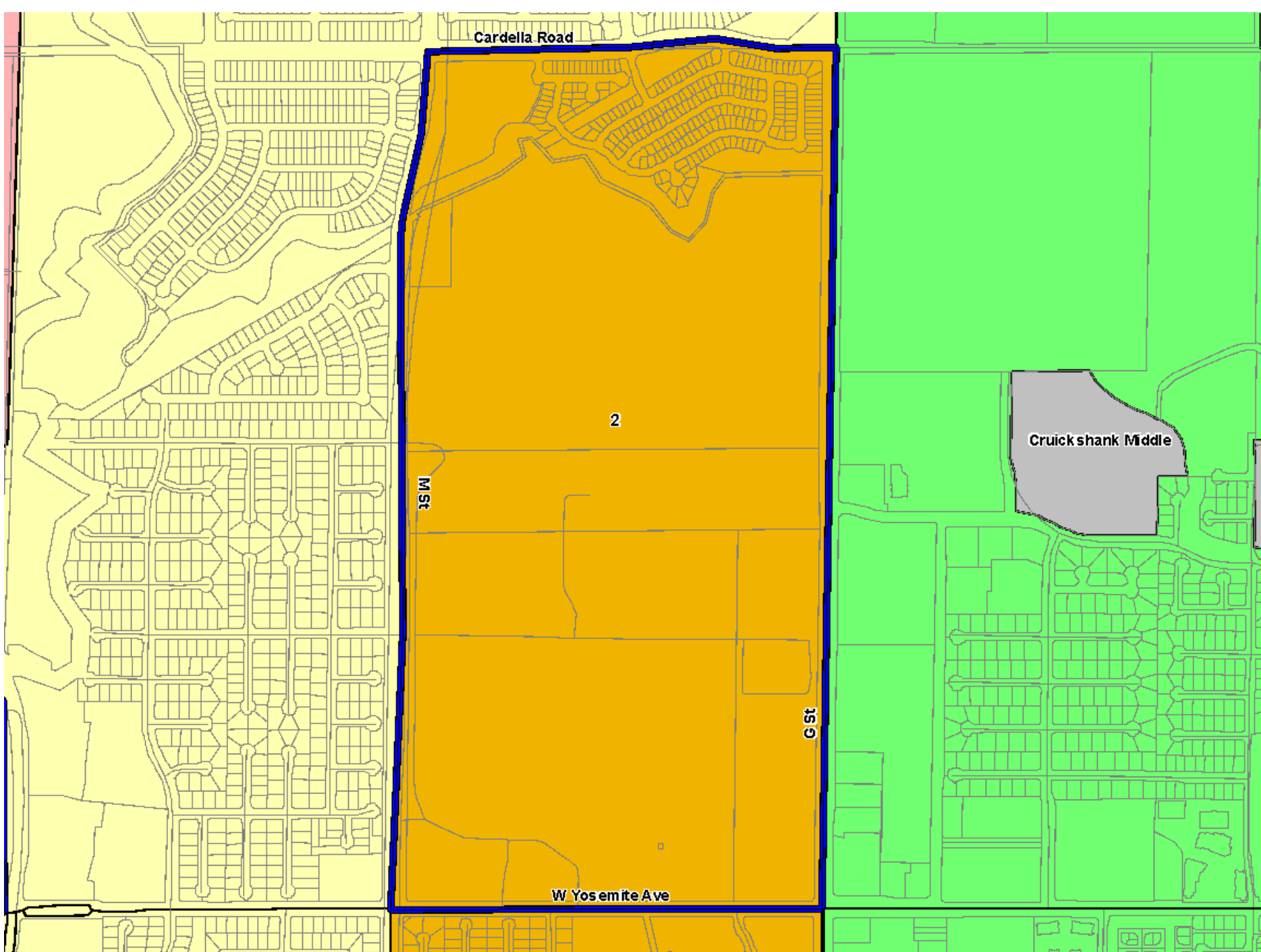
## BLUE MAP

Elementary Area B

Current:  
Rivera

Proposed:  
Burbank

66 Students





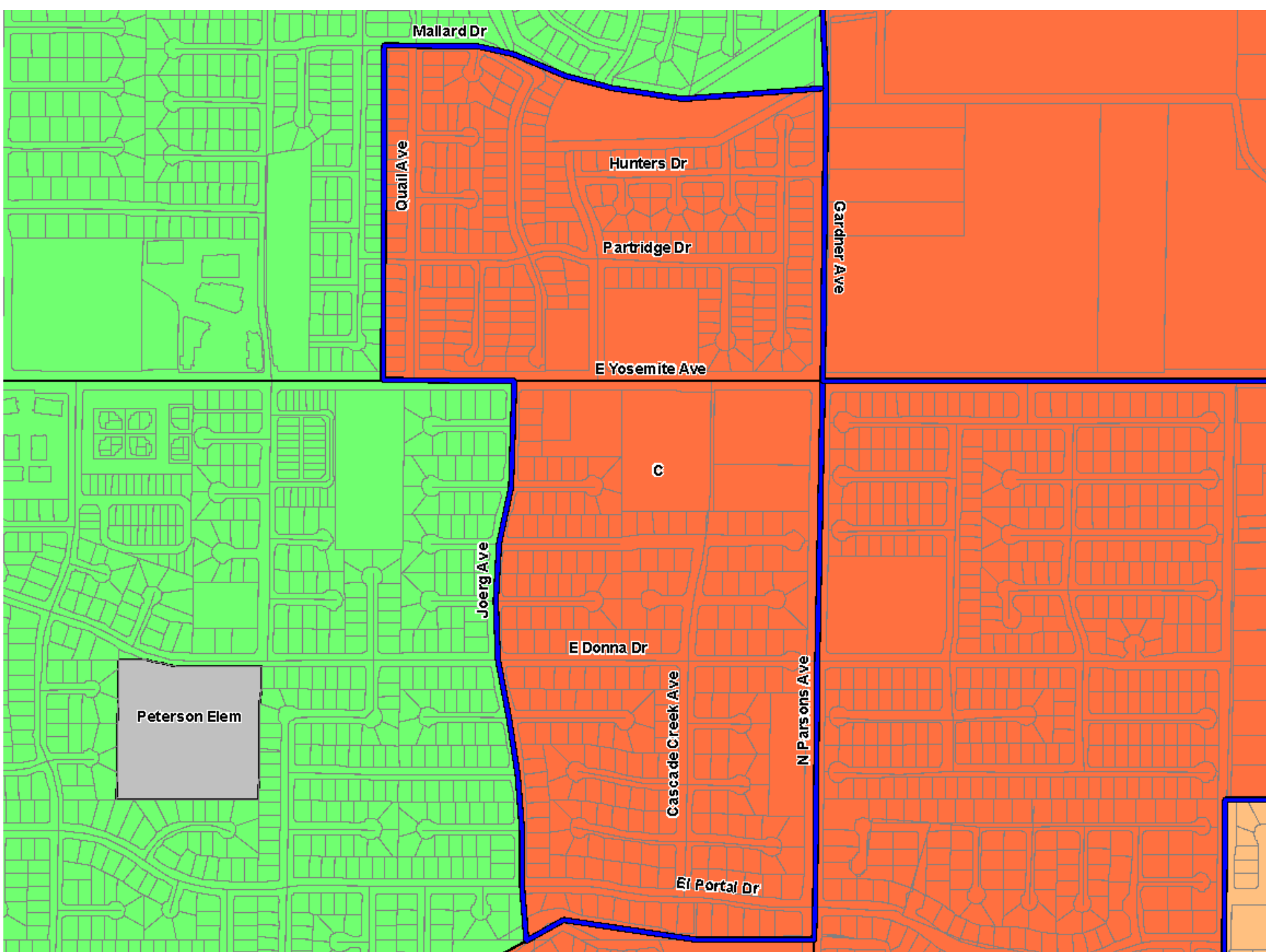
## BLUE MAP

Elementary Area C

Current:  
Peterson

Proposed:  
Chenoweth

105 Students





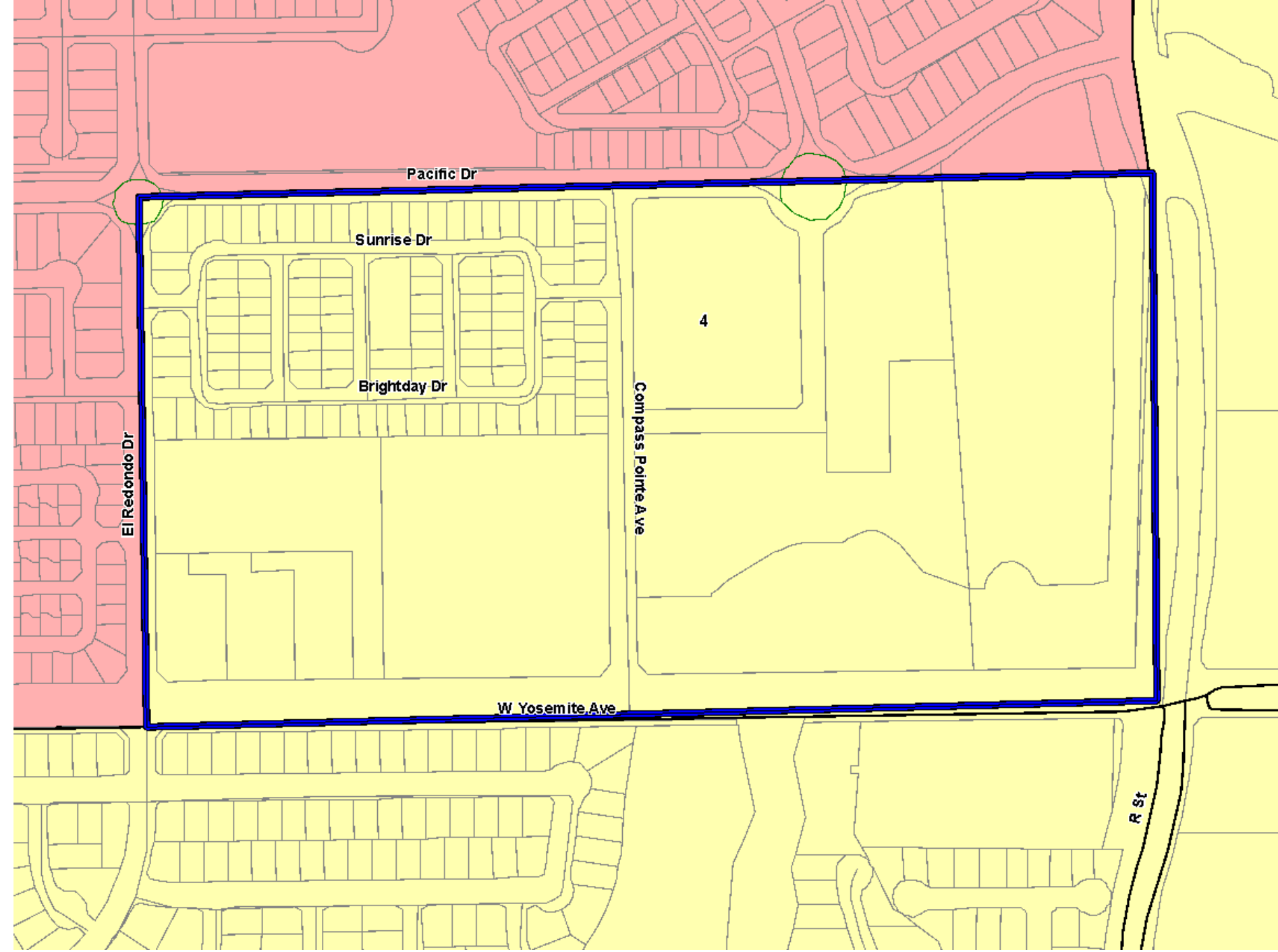
## BLUE MAP

Elementary Area D

Current:  
Franklin/Stefani

Proposed:  
Riviera Elementary

41 Students





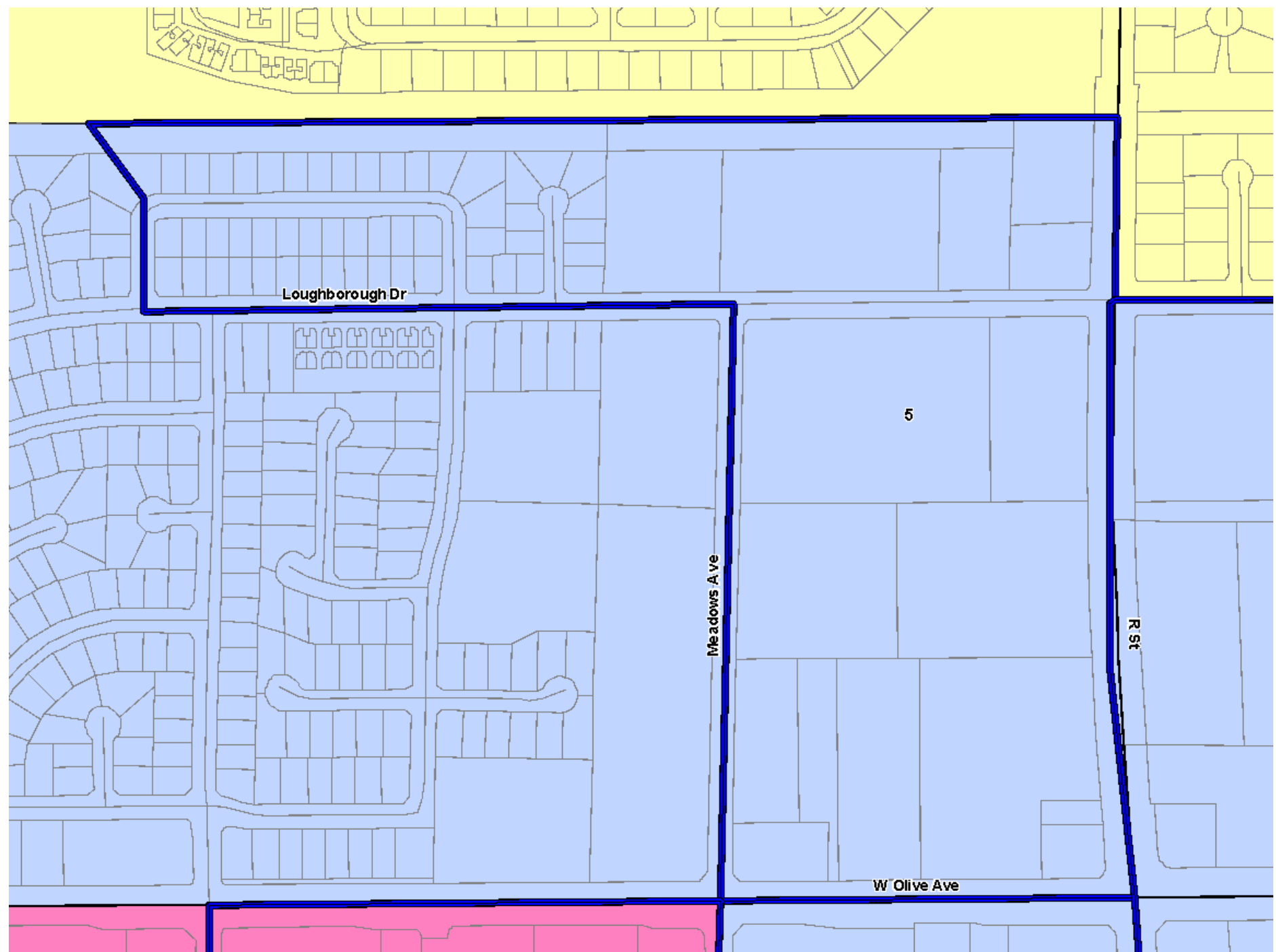
## BLUE MAP

Elementary Area E

Current:  
Rivera

Proposed:  
Muir

75 Students





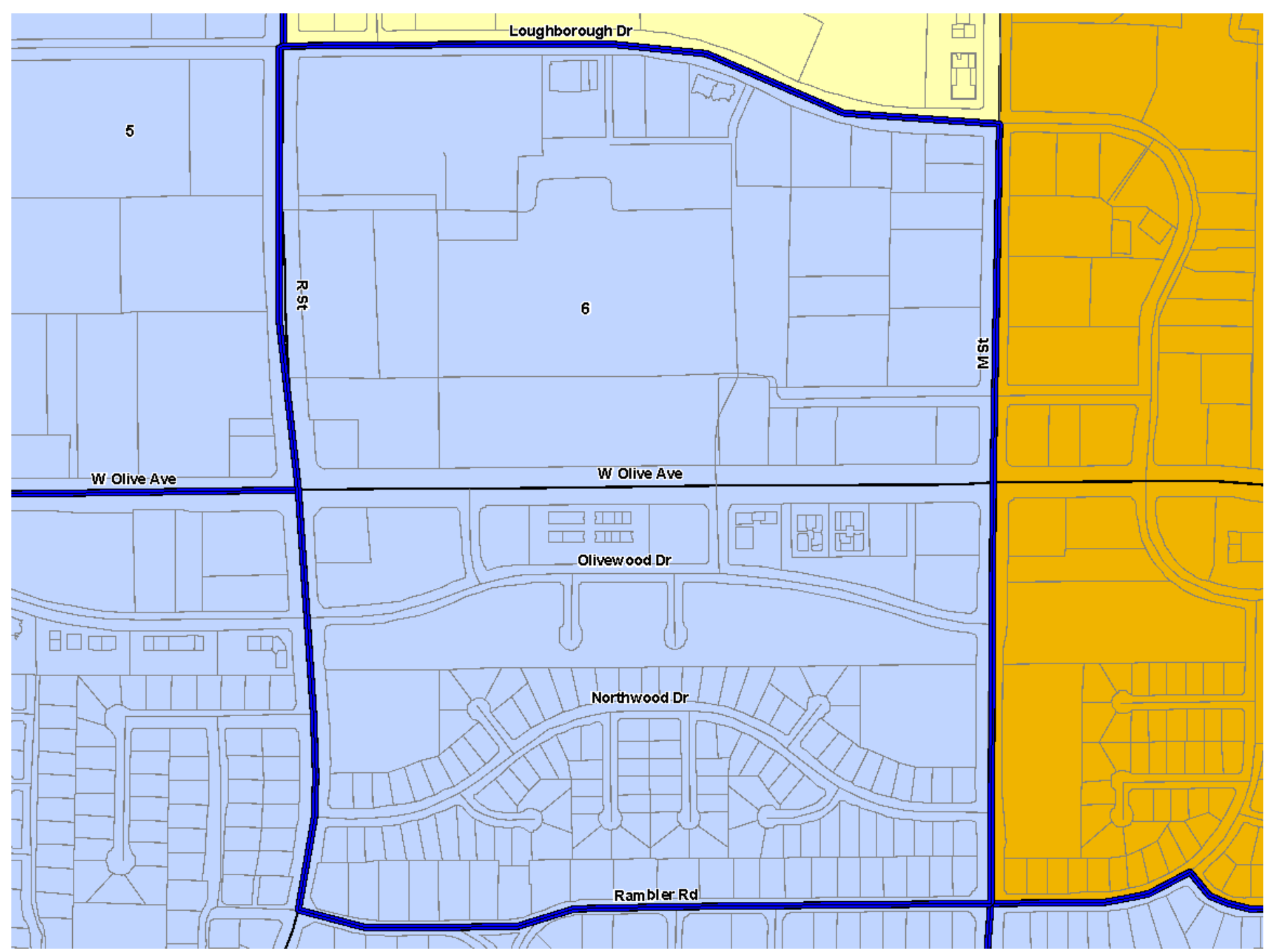
# BLUE MAP

Elementary Area F

Current:  
Burbank

Proposed:  
Muir

56 Students





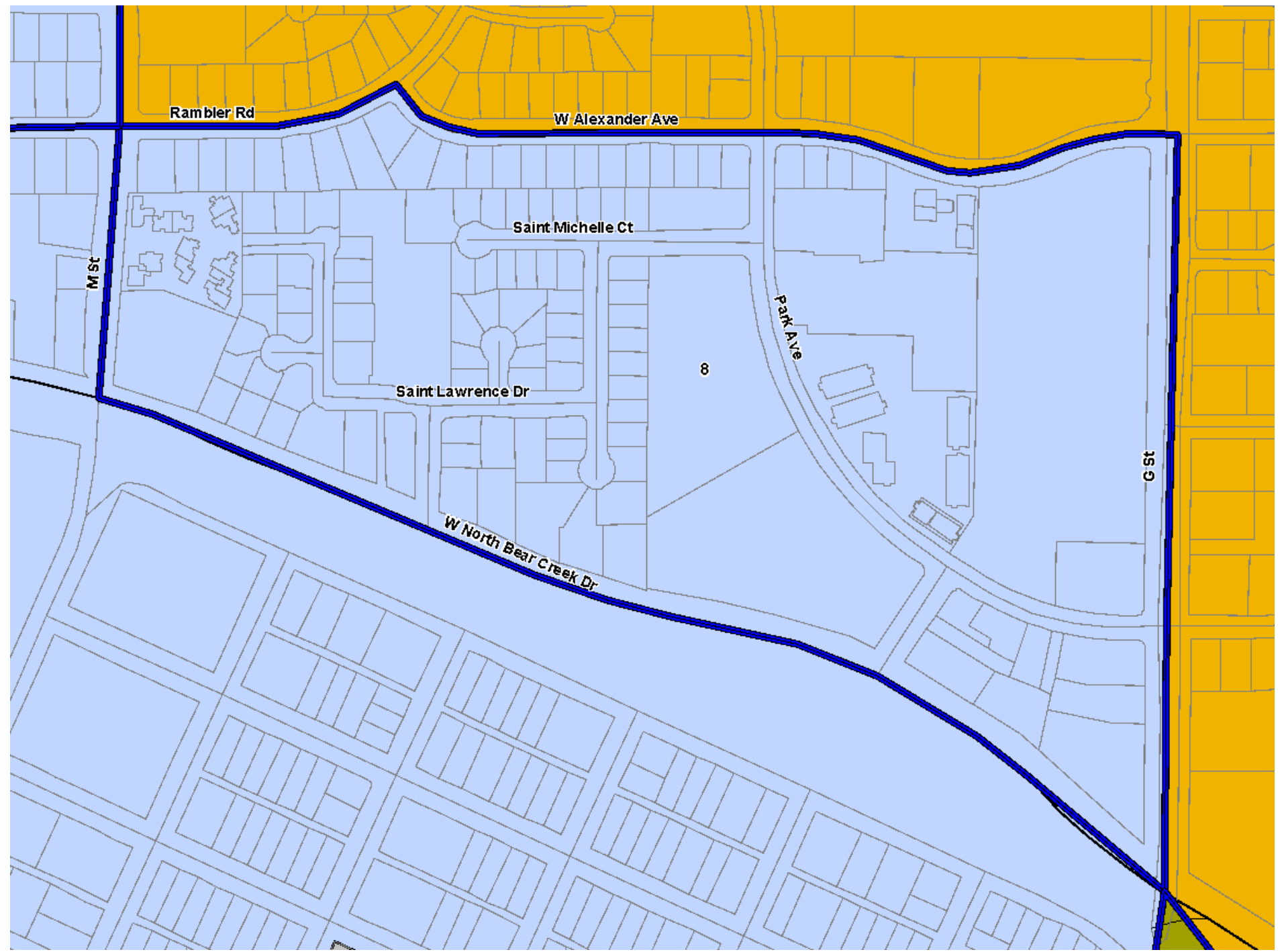
## BLUE MAP

Elementary Area G

Current:  
Burbank

Proposed:  
Muir

52 Students







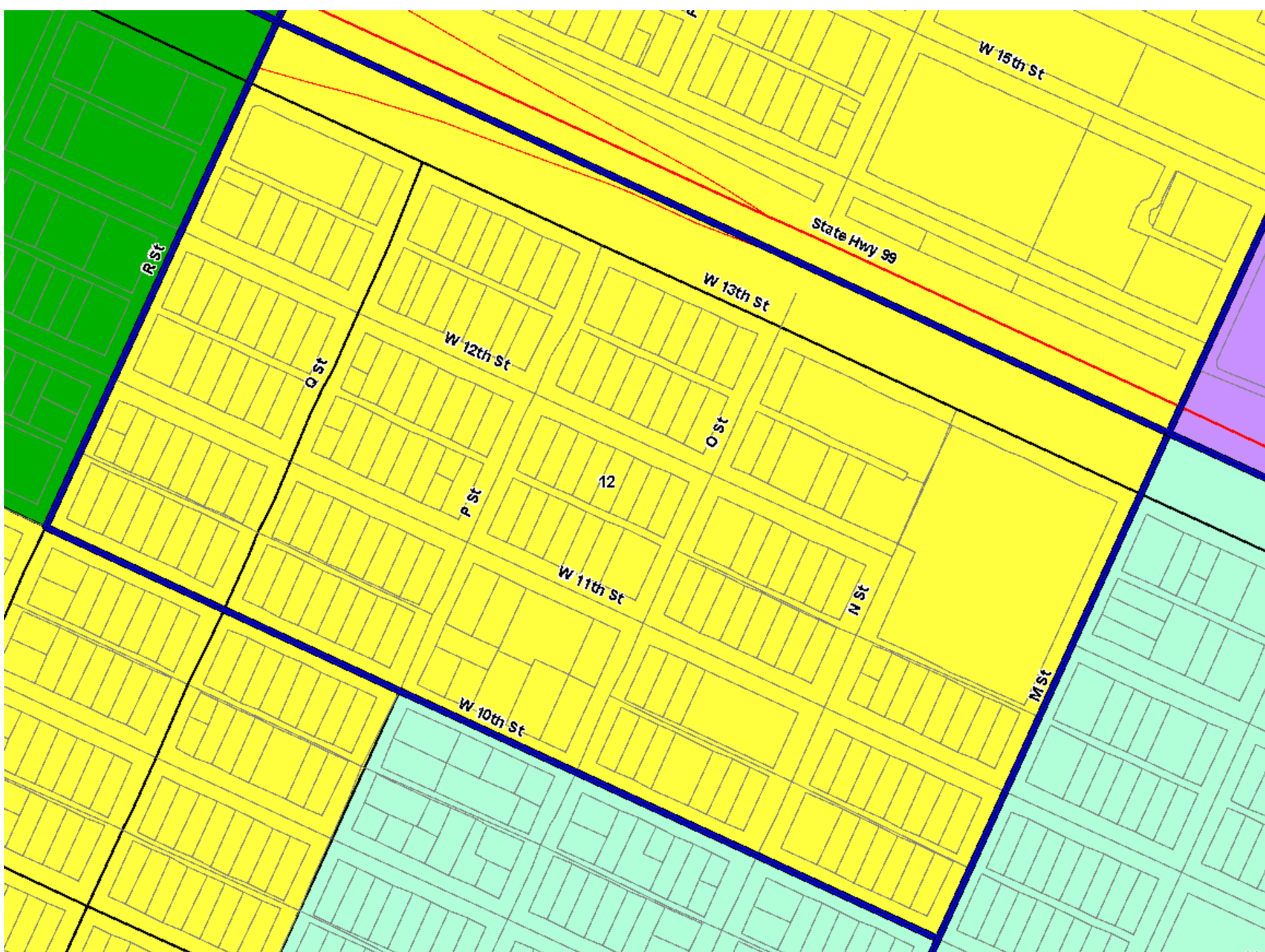
## BLUE MAP

Elementary Area H

Current:  
Gracey

Proposed:  
Sheehy

85 Students





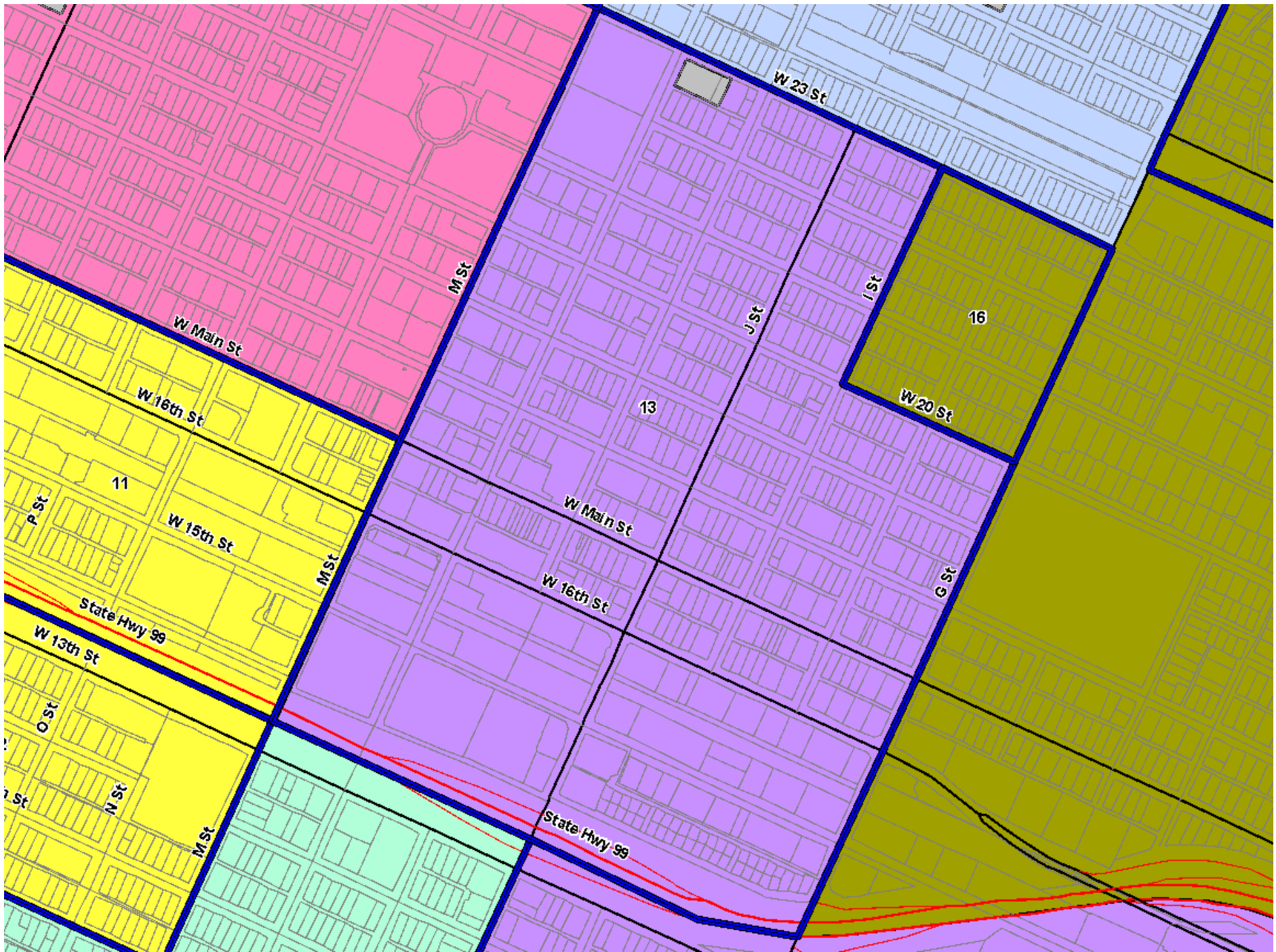
# BLUE MAP

Elementary Area I

Current:  
Muir

Proposed:  
Stowell

126 Students





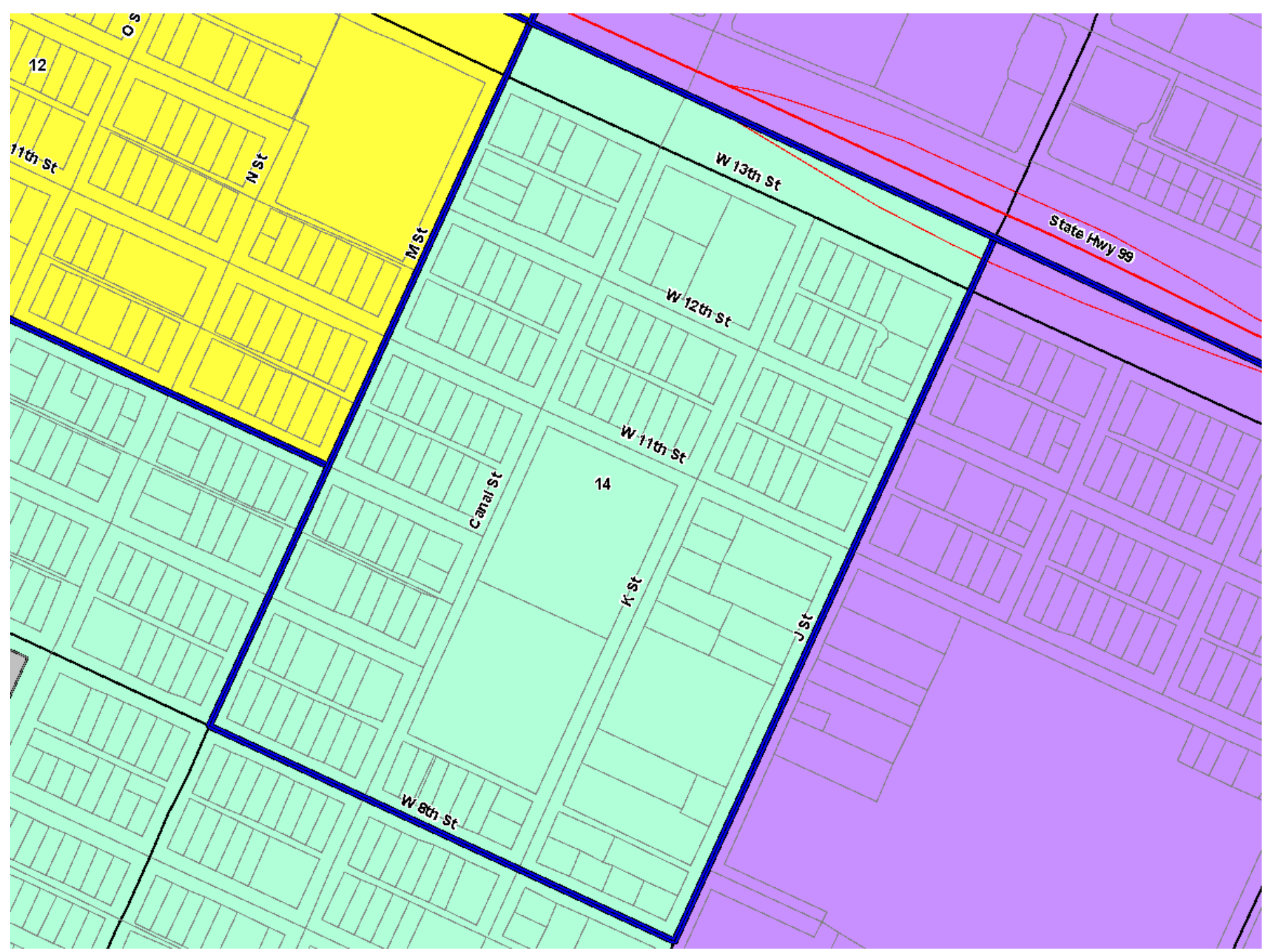
## BLUE MAP

Elementary Area J

Current:  
Stowell

Proposed:  
Reyes

117 Students



# Boundary Adjustment and 6<sup>th</sup> Grade Relocation Community Meeting #4



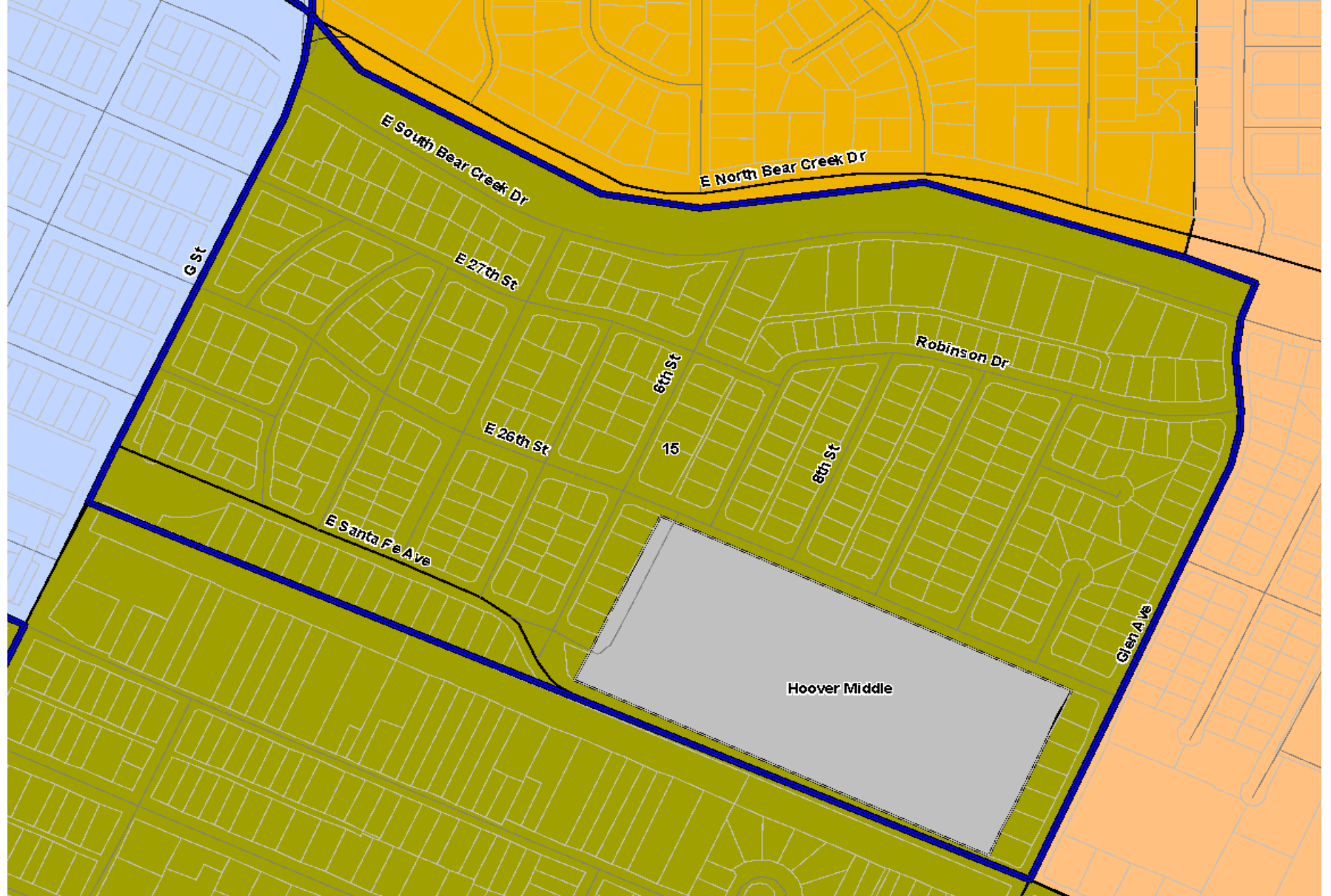
## BLUE MAP

Elementary Area K

Current:  
Givens

Proposed:  
Wright

65 Students





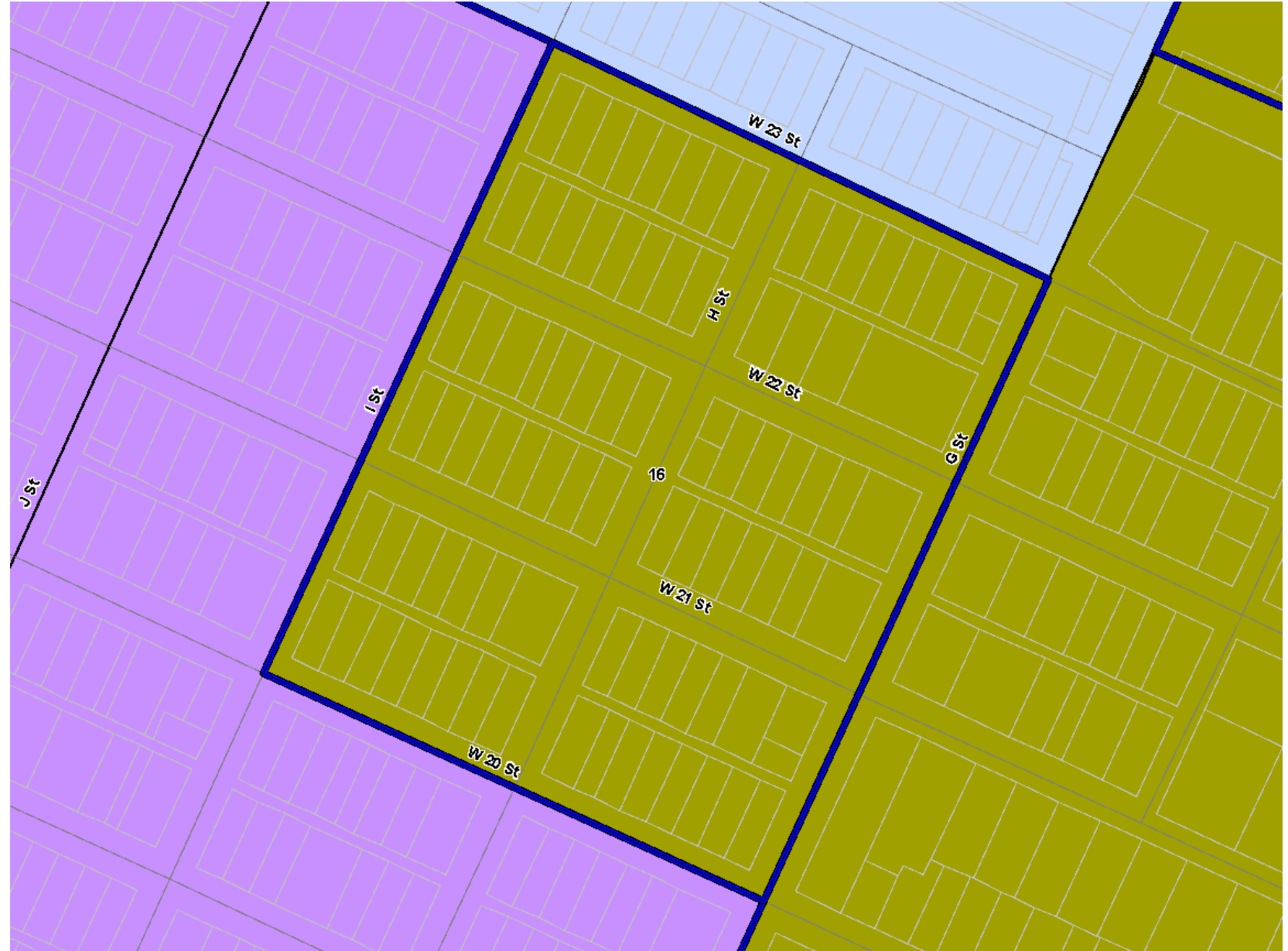
## Boundary Adjustment and 6<sup>th</sup> Grade Relocation Community Meeting #4

### BLUE MAP Elementary Area L

Current:  
Muir

Proposed:  
Wright

29 Students





# Boundary Adjustment and 6<sup>th</sup> Grade Relocation Community Meeting #1

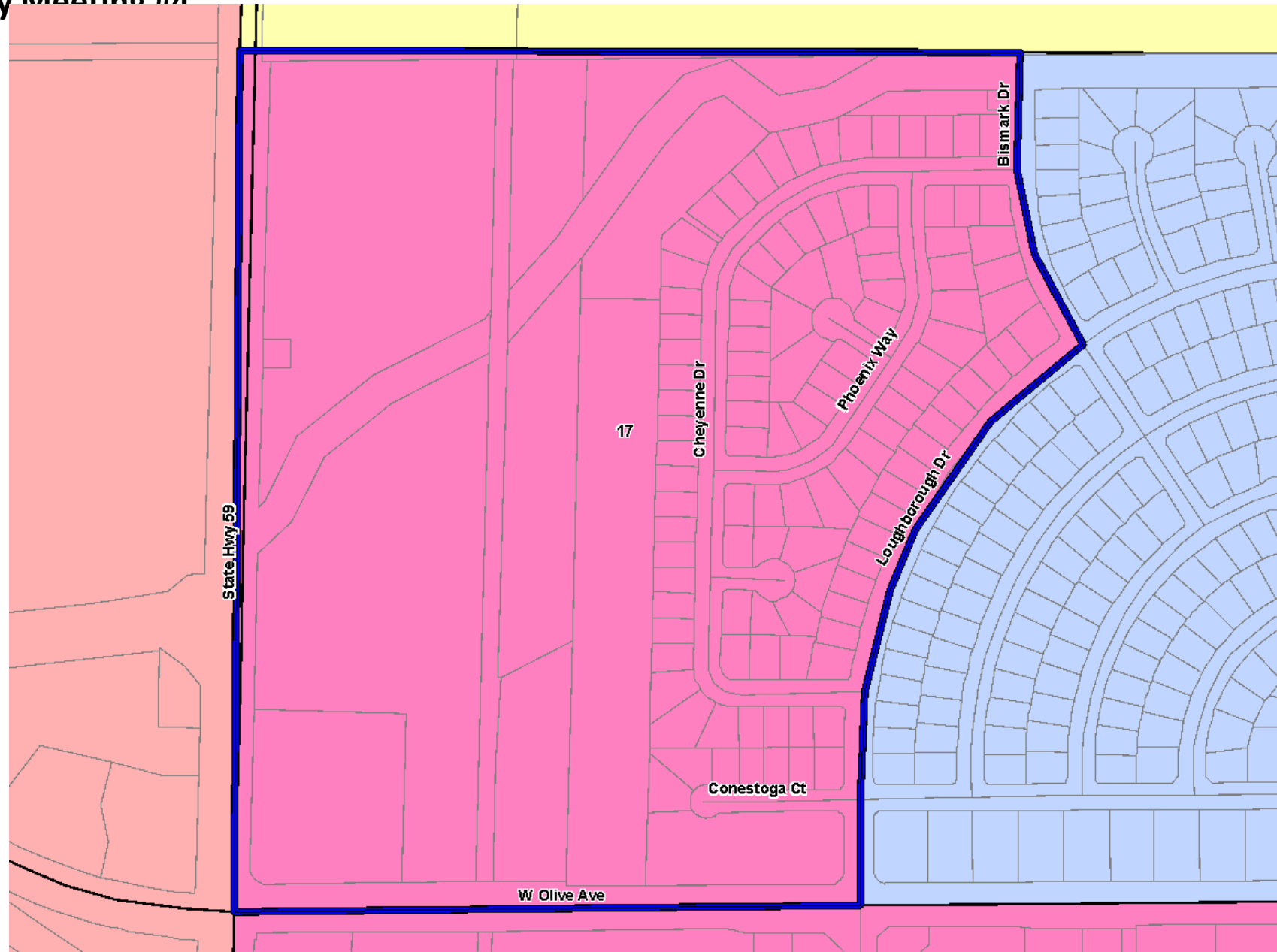
## BLUE MAP

Elementary Area M

Current:  
Muir

Proposed:  
Fremont

59 Students



# Boundary Adjustment and 6<sup>th</sup> Grade Relocation Community Meeting #4



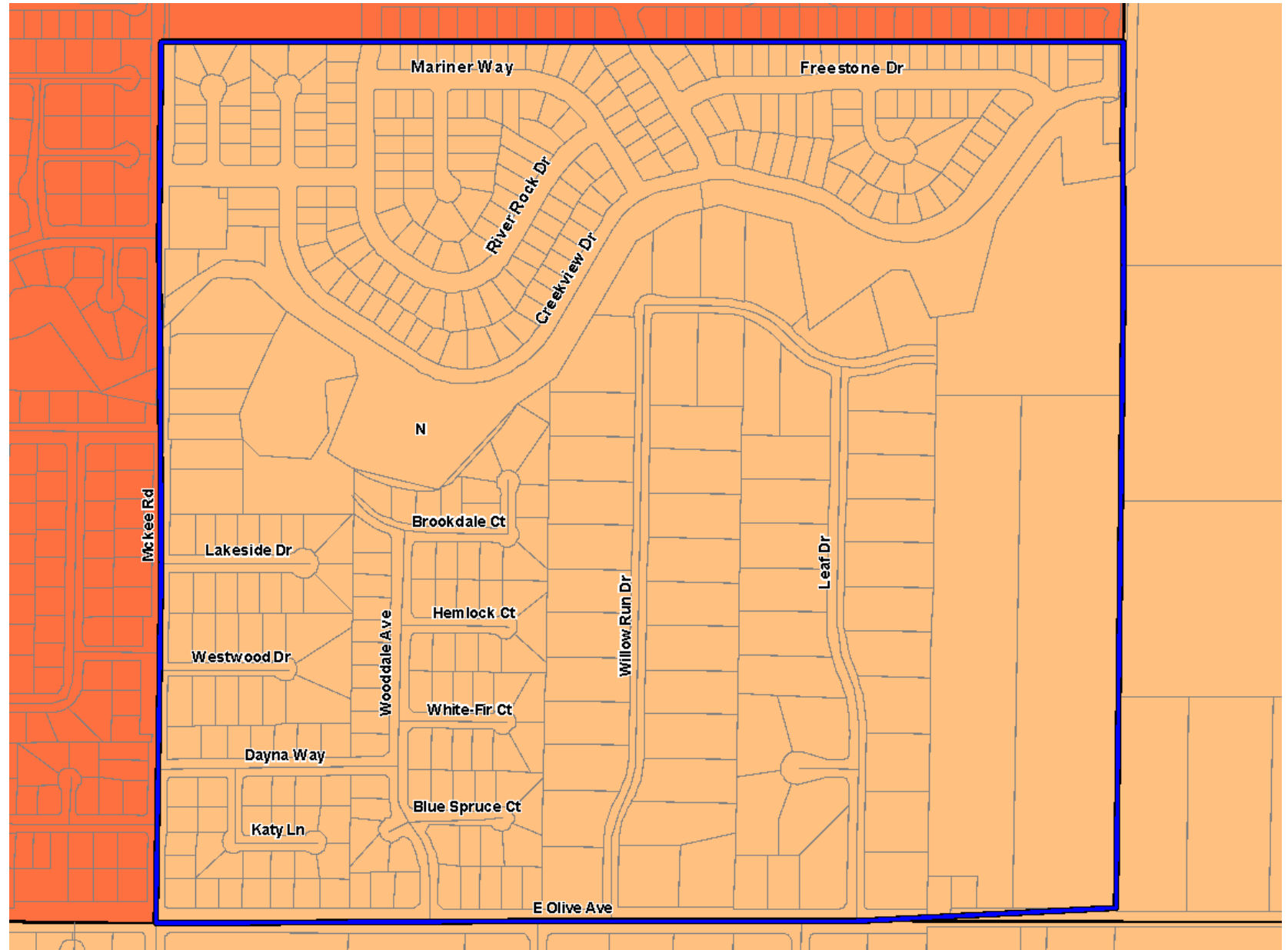
## BLUE MAP

Elementary Area N

Current:  
Chenoweth

Proposed:  
Givens

88 Students





# Boundary Adjustment and 6<sup>th</sup> Grade Relocation Community Meeting #4

**BLUE MAP**

**Elementary Area O**

**Current:  
Givens**

**Proposed:  
Chenoweth**

**9 Students**

