




ALMOND BLOSSOMS VINCENT VAN GOGH

Almond Blossom


Elementary School



Almond Blossom Elementary School is in the Construction Documents phase, which was preceded by Preliminary, Schematic Design, Design Development phases which have been completed. A “value-engineering” process has also been completed to assure conformance with the District’s budget.

Design options have been developed with input from district staff, including specific input regarding technology, security, and food service preferences.

Design documents for **off-site improvements** (driveways, bus-drop, etc.) have been submitted to the City of Patterson for review. Additionally, a **traffic study** has been performed and accepted.



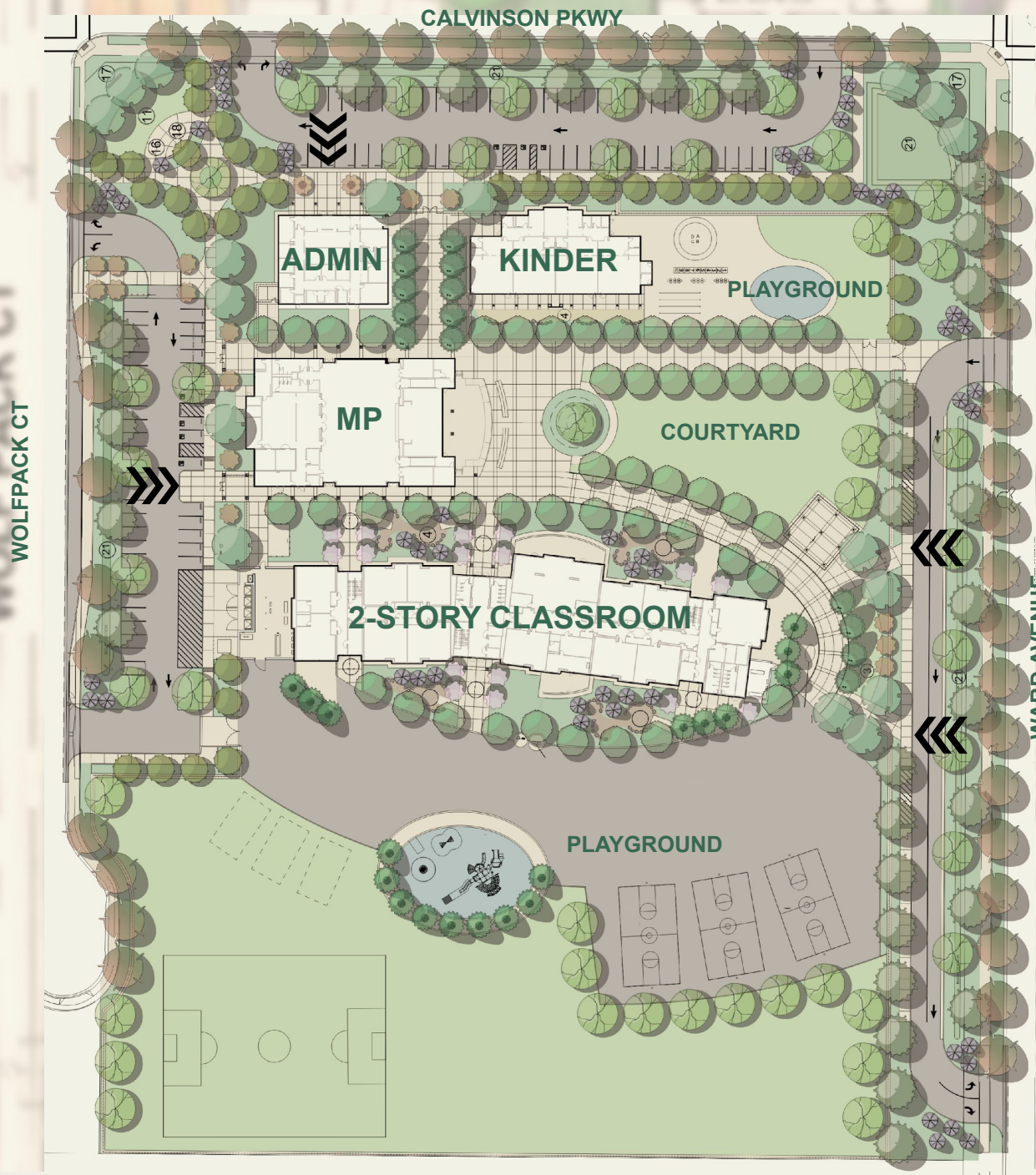
Plans continue to be refined to reflect the requirements of the draft Educational Specification, **subject to updates** if required based upon adoption of the Ed Spec **by the Board of Education.**

Roebbelen Construction has been selected by the District as their **Lease-Leaseback partner**, and is providing valuable constructability, scheduling, and budgeting input.



The campus is sited on **12-acres**, bounded by a residential community to the North and West of the site, an undeveloped area to the East, and a community park to the South.

The campus design will meet all current **Cal-Green Code water conservation** measures, storm water filtration, landscape / irrigation measures, **energy conservation**, photovoltaic (**solar**) collectors, and provisions of electric vehicle (**EV**) charging stations.

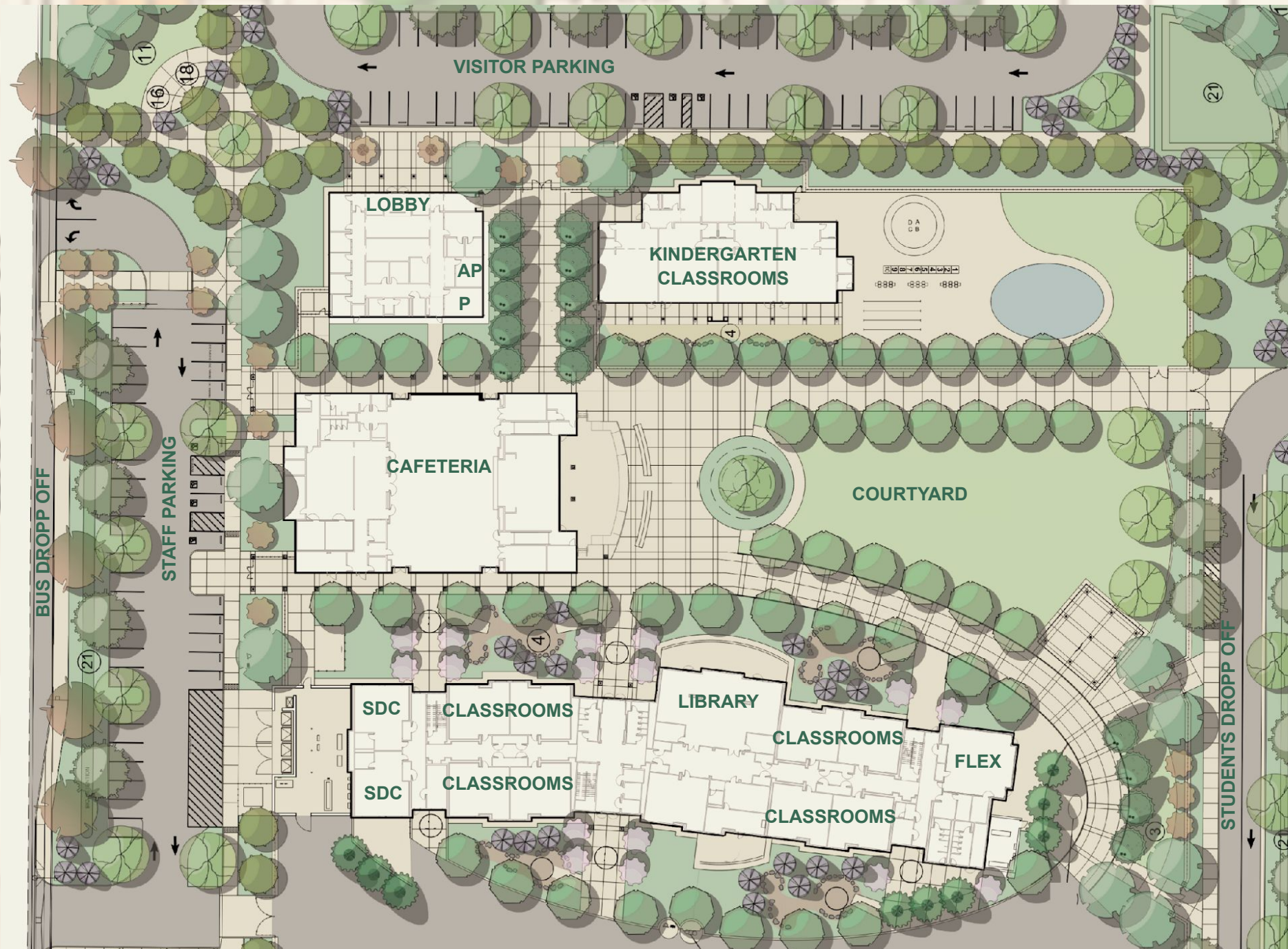


Almond Blossom Elementary School is designed to conform to the **functions, spatial relationships, area requirements,** and all other features outlined in the **District's 2025 Elementary Educational Specification.**

The school design consists of an **Administration Building, Kindergarten Classroom Building, Multipurpose Building,** and a **2-story Classroom Building,** totaling 71,011 square feet. **School access.**



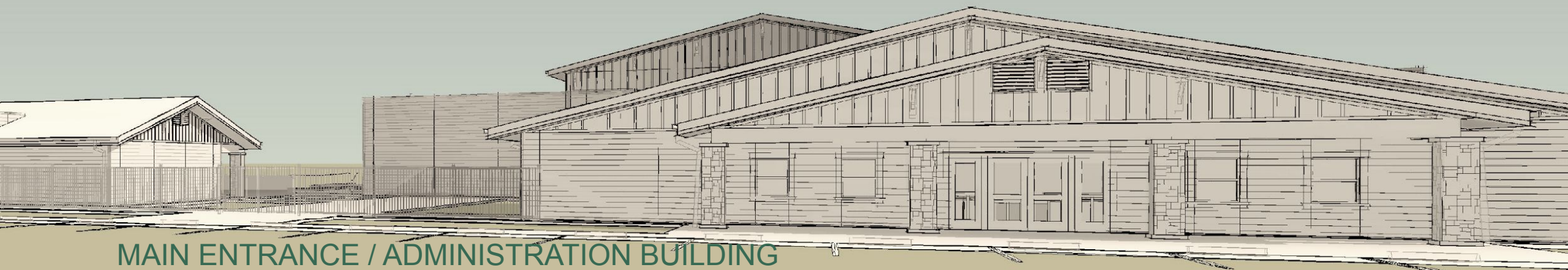
K-6 campus designed to house **680 students**. (4) Kindergarten classrooms, two (2) SDC classrooms, twelve (12) 1st thru 3rd grade classrooms, nine (9) 4th thru 6th grade classrooms, and supporting Library, Flex Room (Music, Maker Space and After-School program spaces).



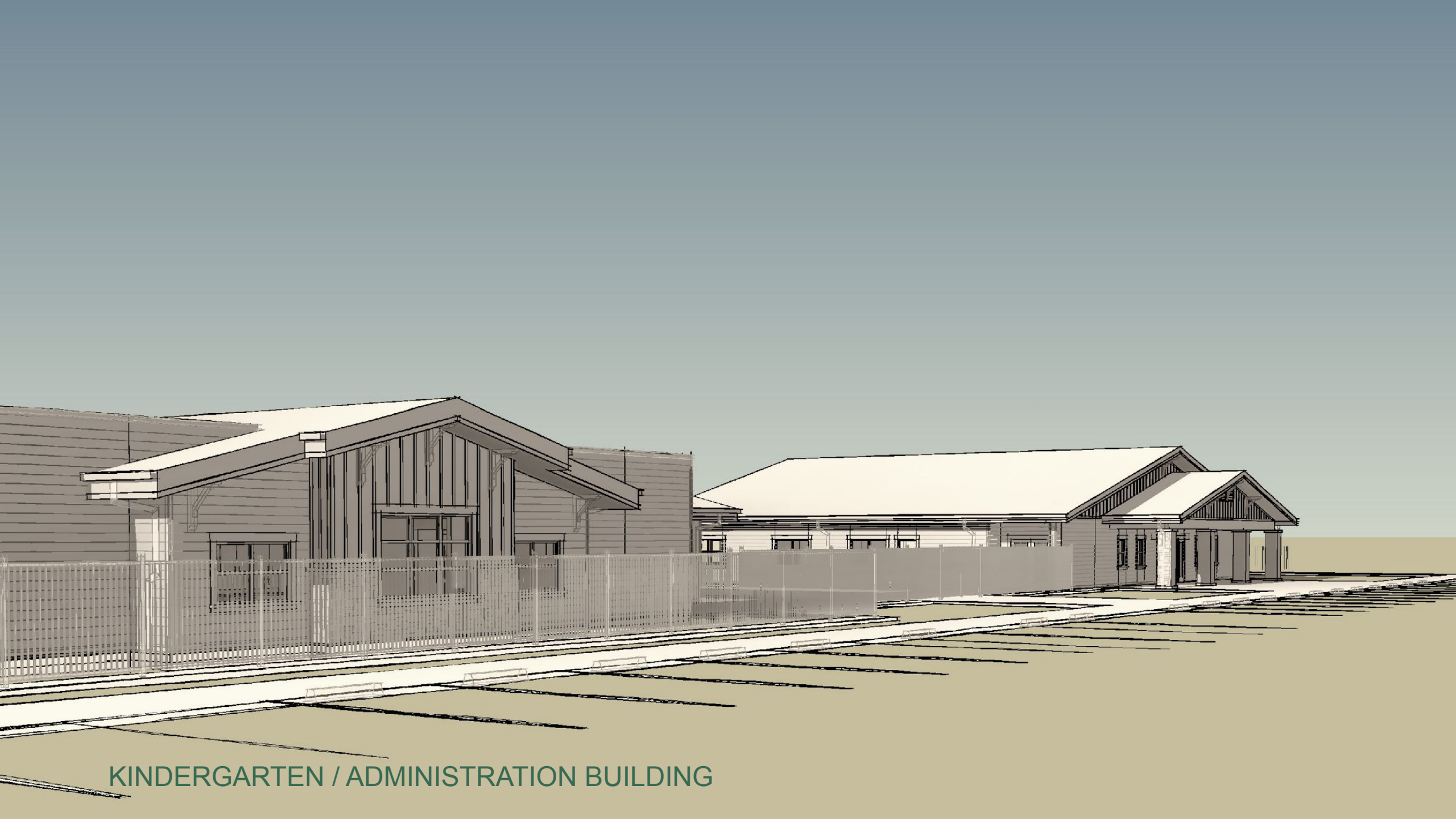
Pedestrian pathways are segregated from vehicular traffic. **Staff, visitor, bus, and drop-off areas** are separated for supervision and access, meeting the criteria of the Ed Spec and the design requirements of the California Department of Education.



The school has been designed with a modern **“Farmhouse”** motif consisting of finish materials, scale, and details resembling the surrounding homes. Organized around open green spaces, playgrounds, and outdoor learning areas.



MAIN ENTRANCE / ADMINISTRATION BUILDING



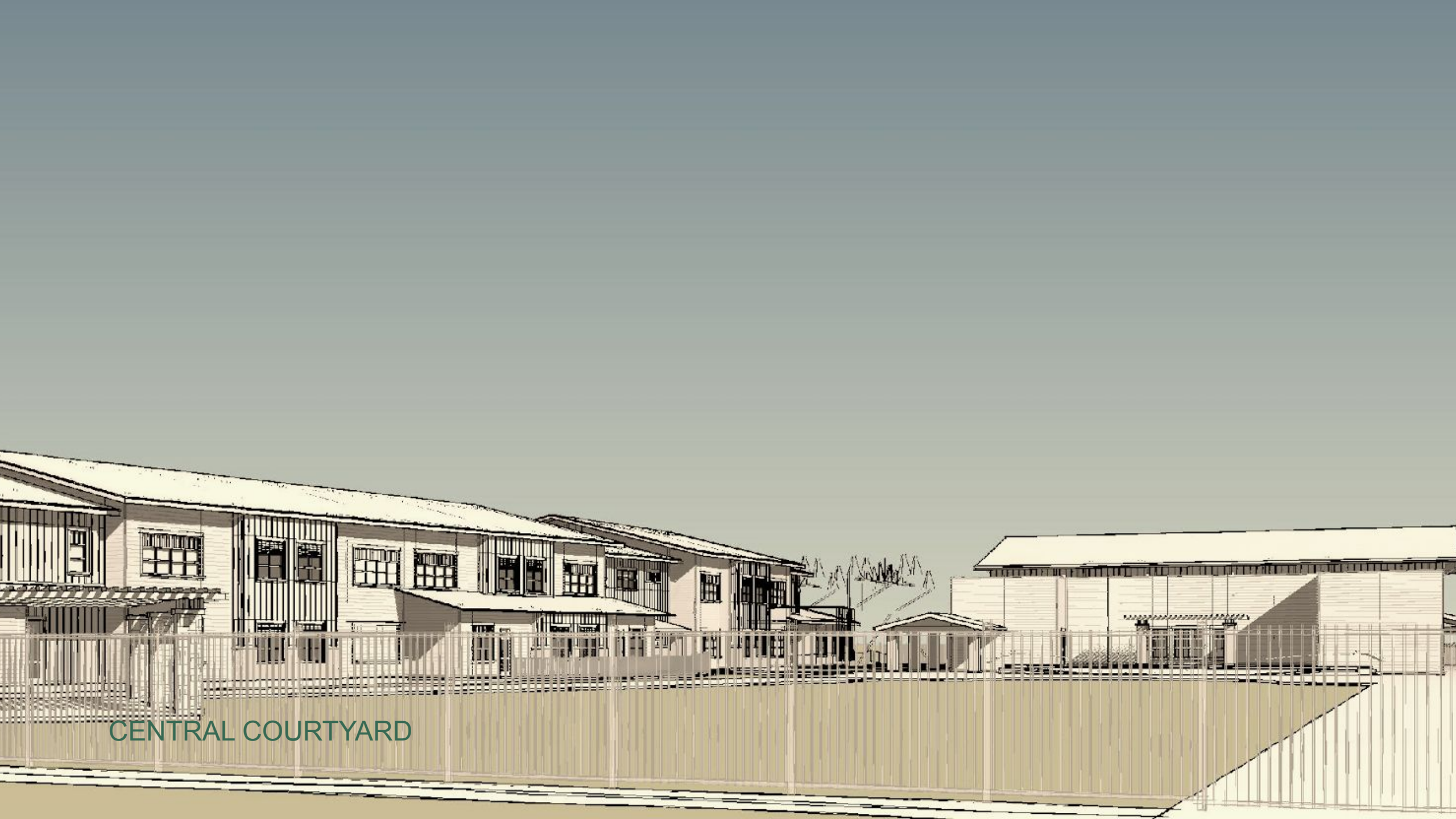
KINDERGARTEN / ADMINISTRATION BUILDING



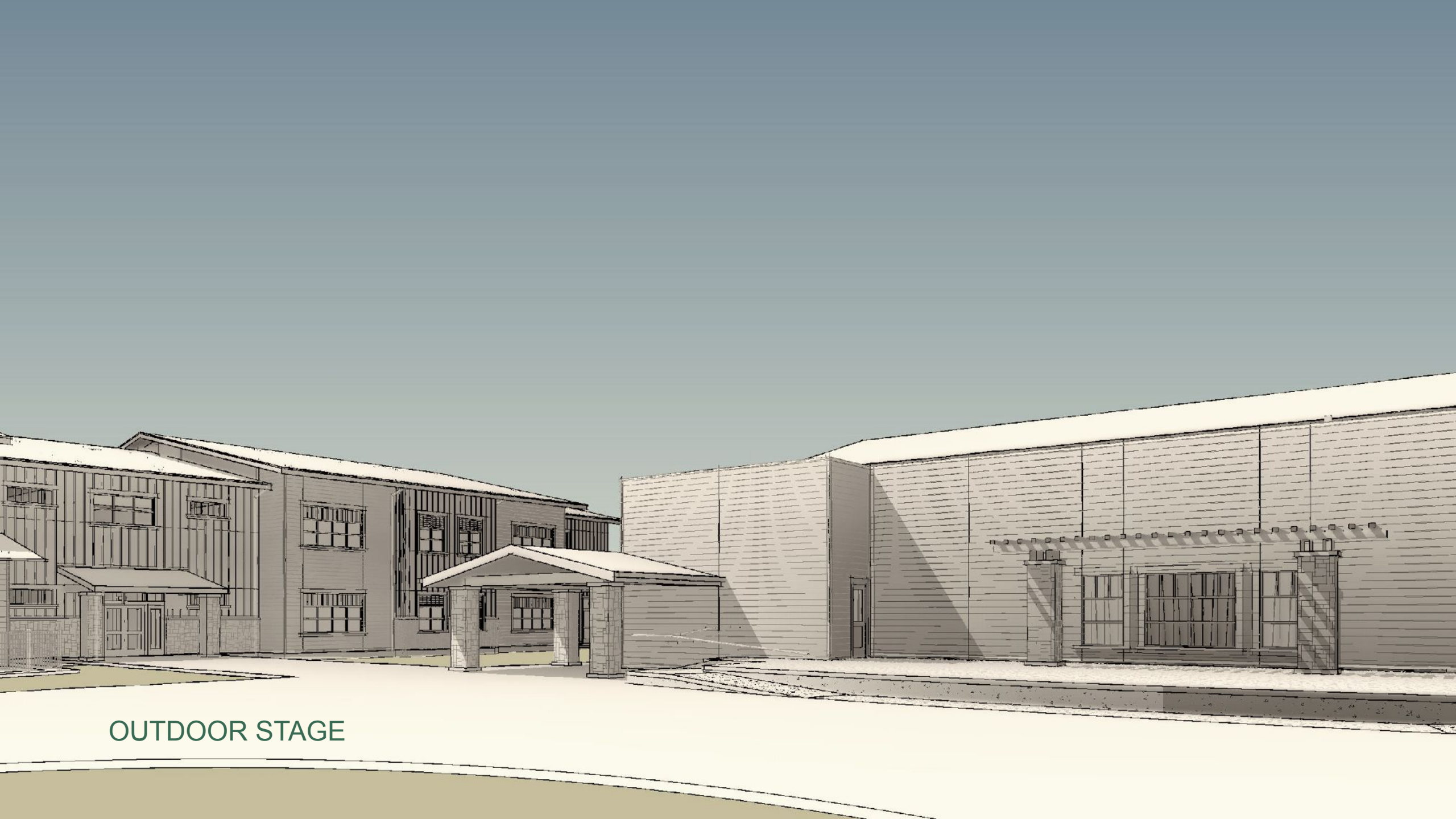
STAFF ENTRANCE / DELIVERY



STUDENTS ENTRANCE AT DROP-OFF



CENTRAL COURTYARD



OUTDOOR STAGE

The orientation of entrances are readily visible to parents and visitors and overall **site access and visibility**.



KINDERGARTEN / CENTRAL COURTYARD



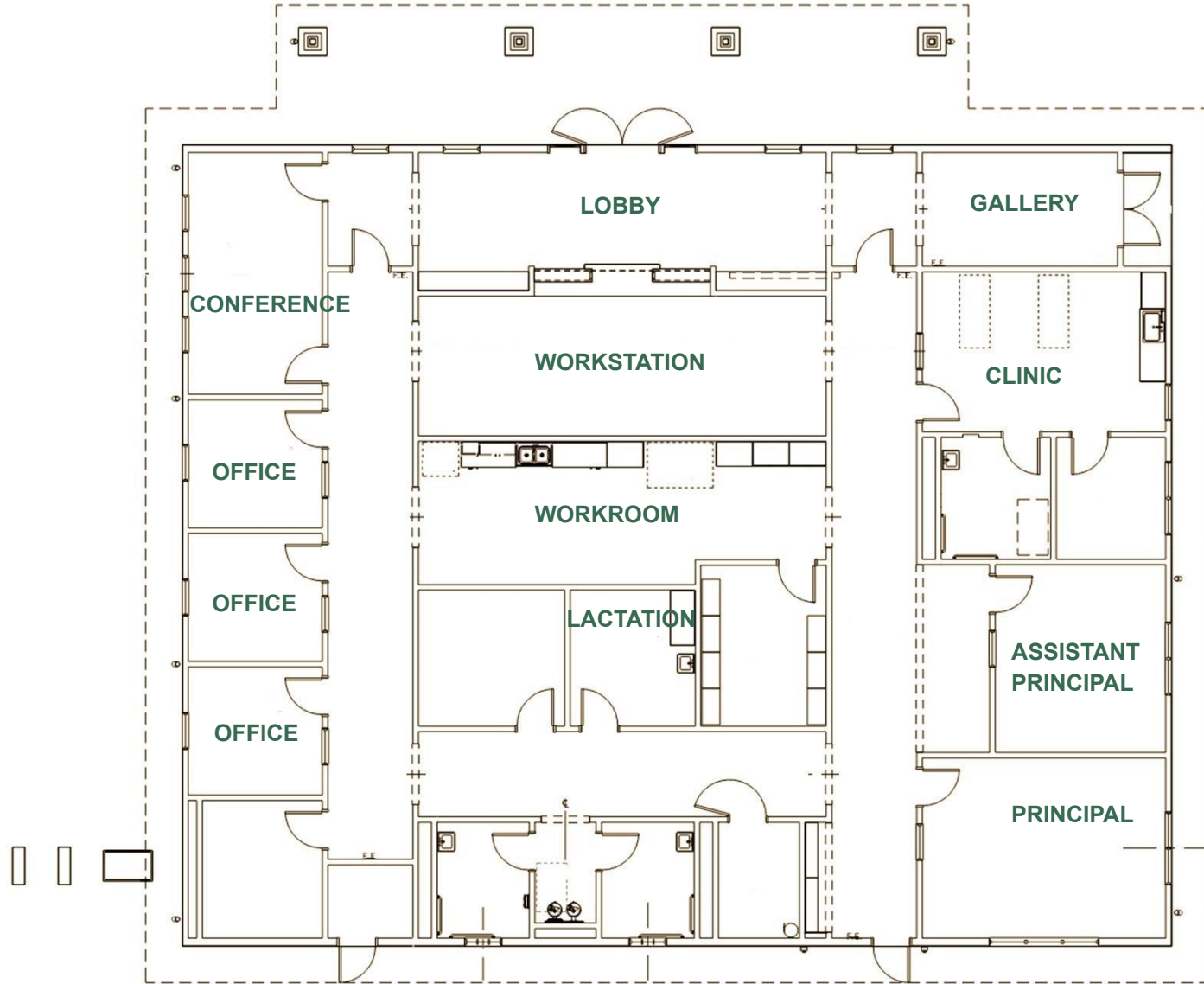
Finish materials have been selected for durability, ease of maintenance, repair, and affordable first-cost qualities.



Emergency and fire access are straight-forward and fully integrated into the campus design.

The buildings form a **secure perimeter** with controlled access points at strategic locations, with all day-time visitors accessing the campus via the Administration Building.

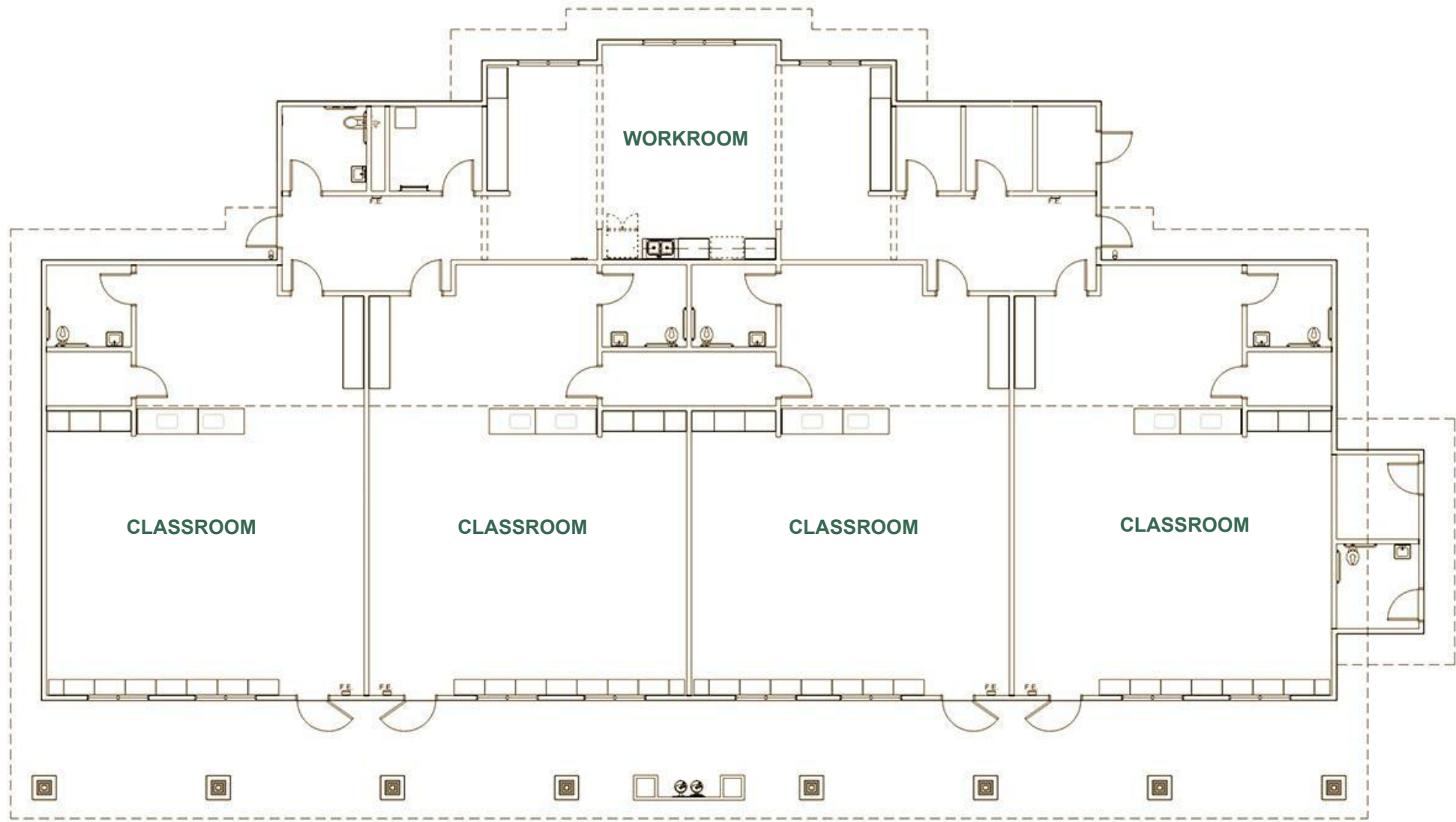
Areas between buildings are open and **easily supervised**.



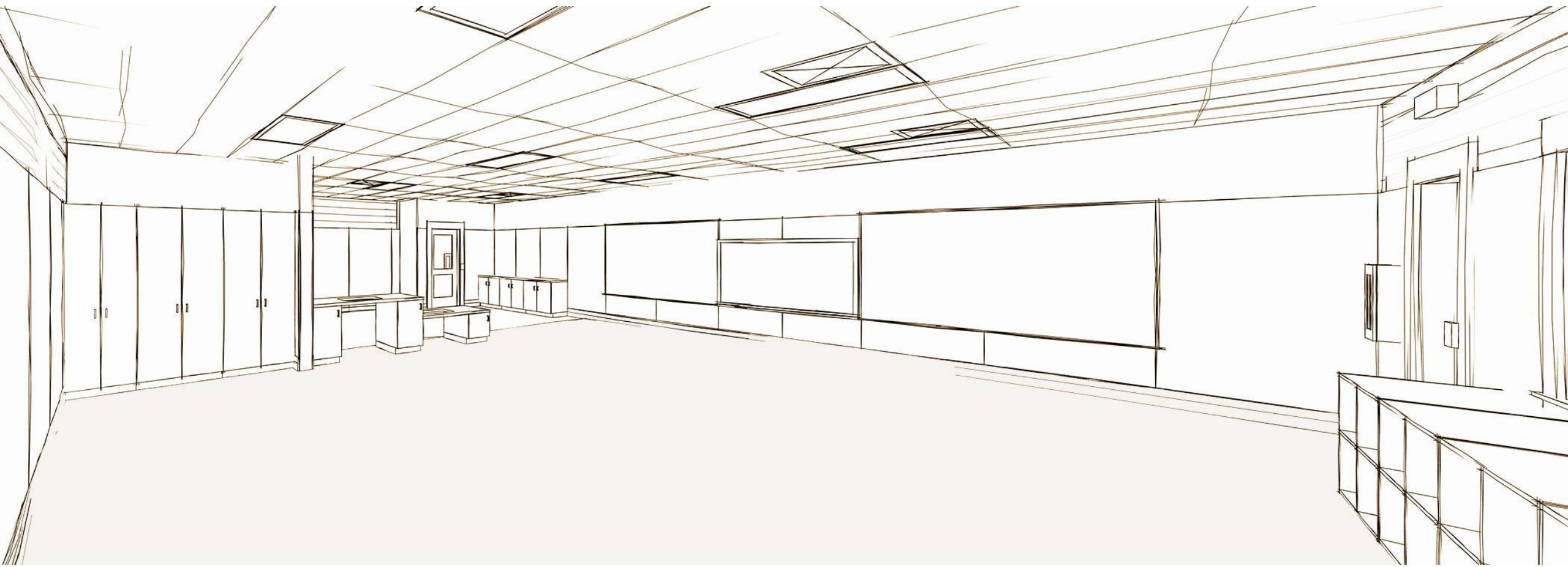
Administration Building



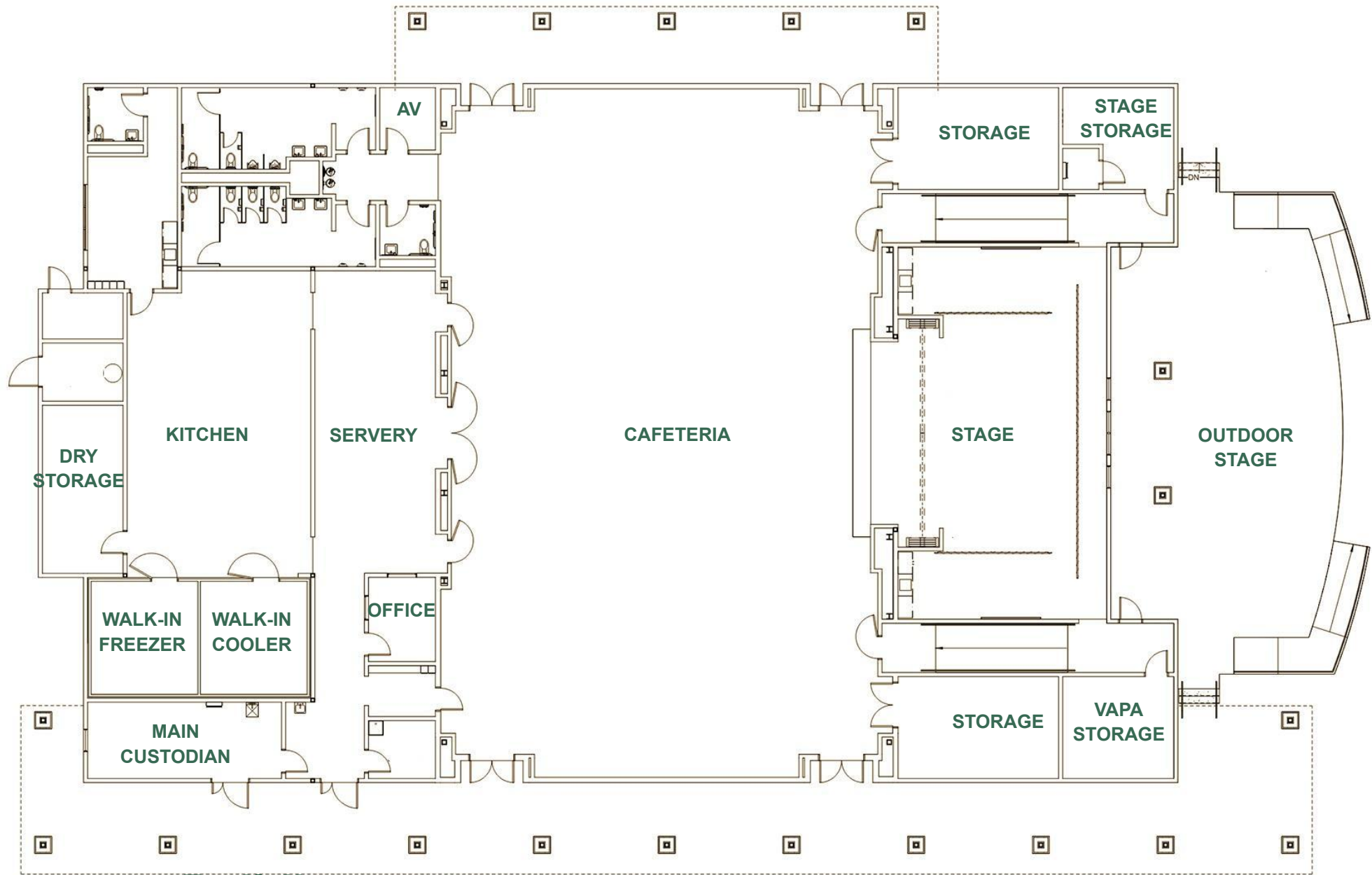
Administration Building - Lobby



Kindergarten Building



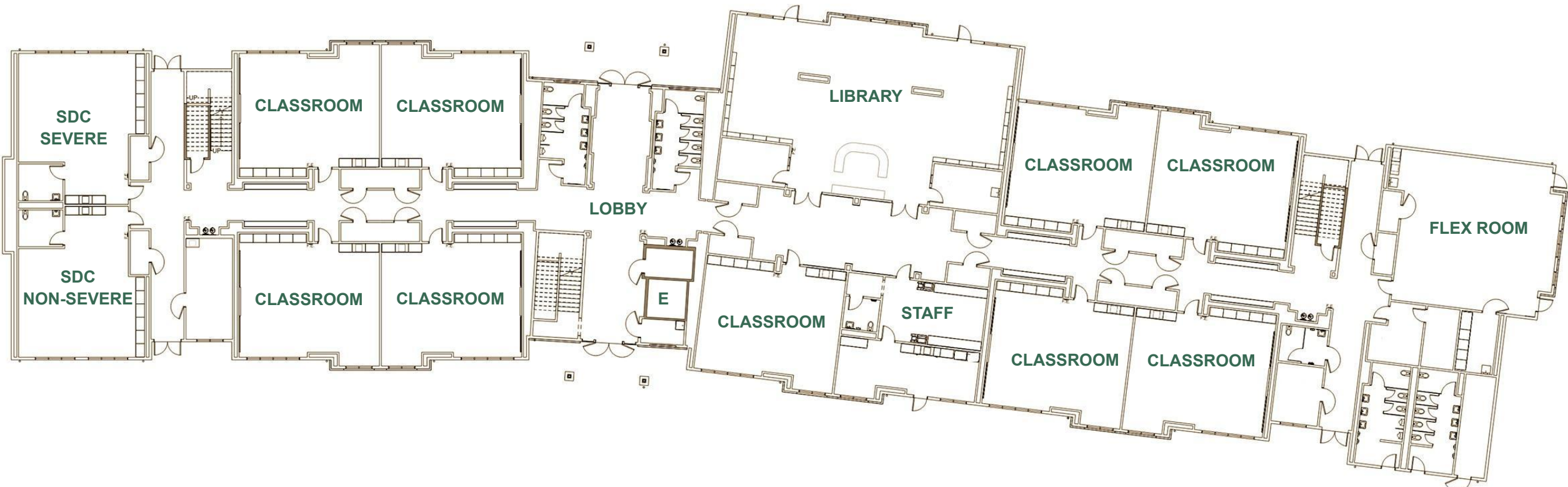
Kindergarten Classroom



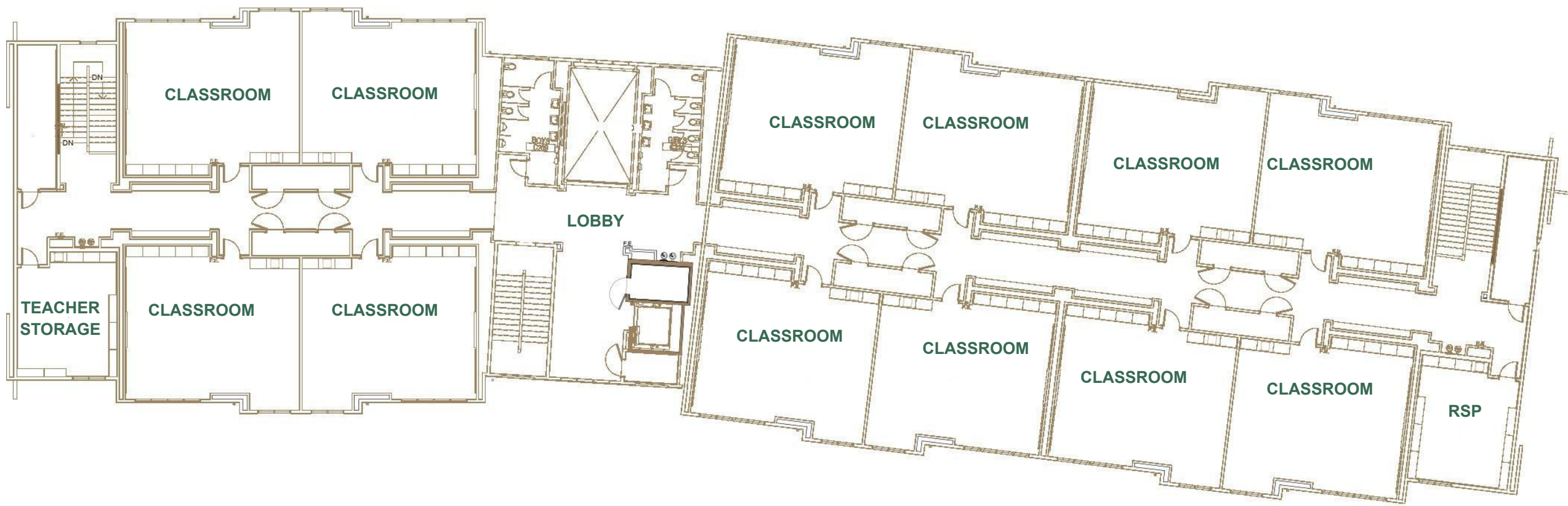
Multi-purpose Building



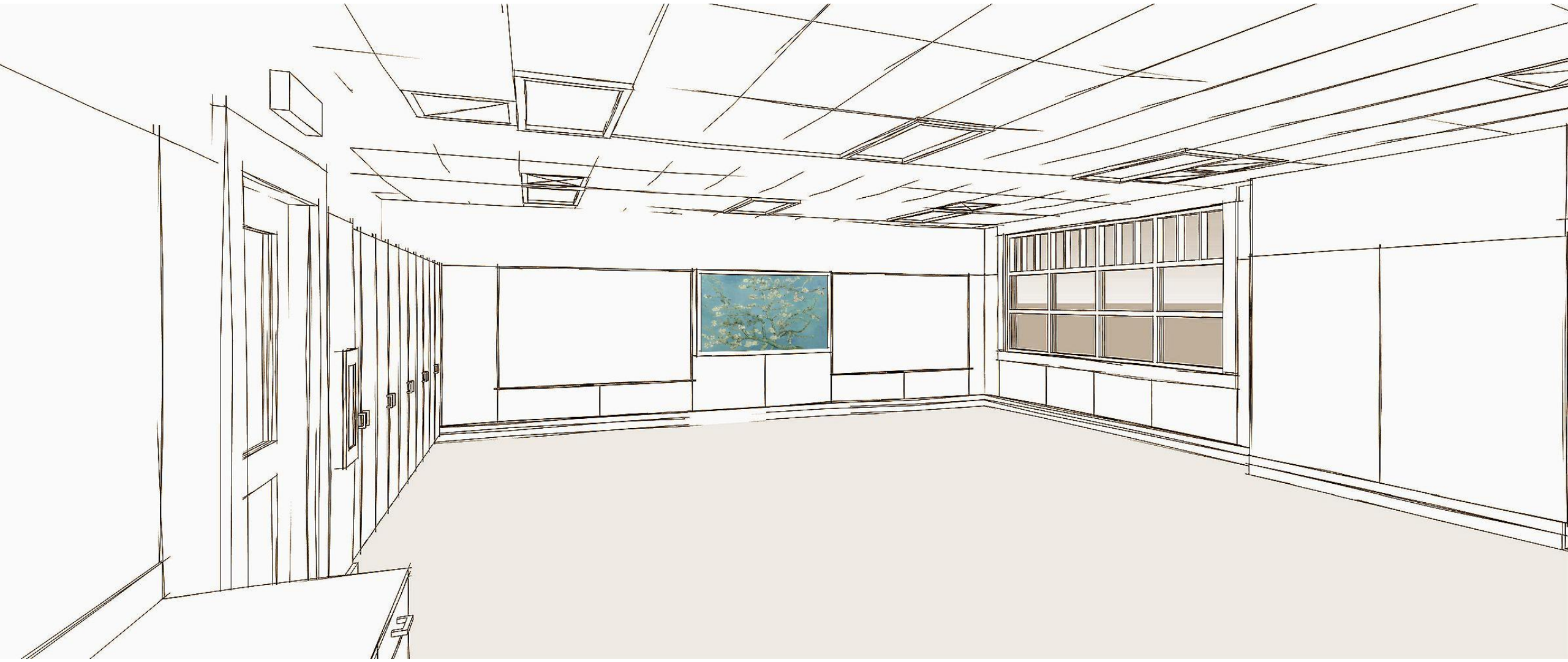
Multi-purpose Building



Classroom Building – First Floor



Classroom Building – Second Floor



Classroom



Awakening and Hope

VINCENT VAN GOGH

COMMUNITY ARCHITECTURE

Almond Blossom

Elementary School